

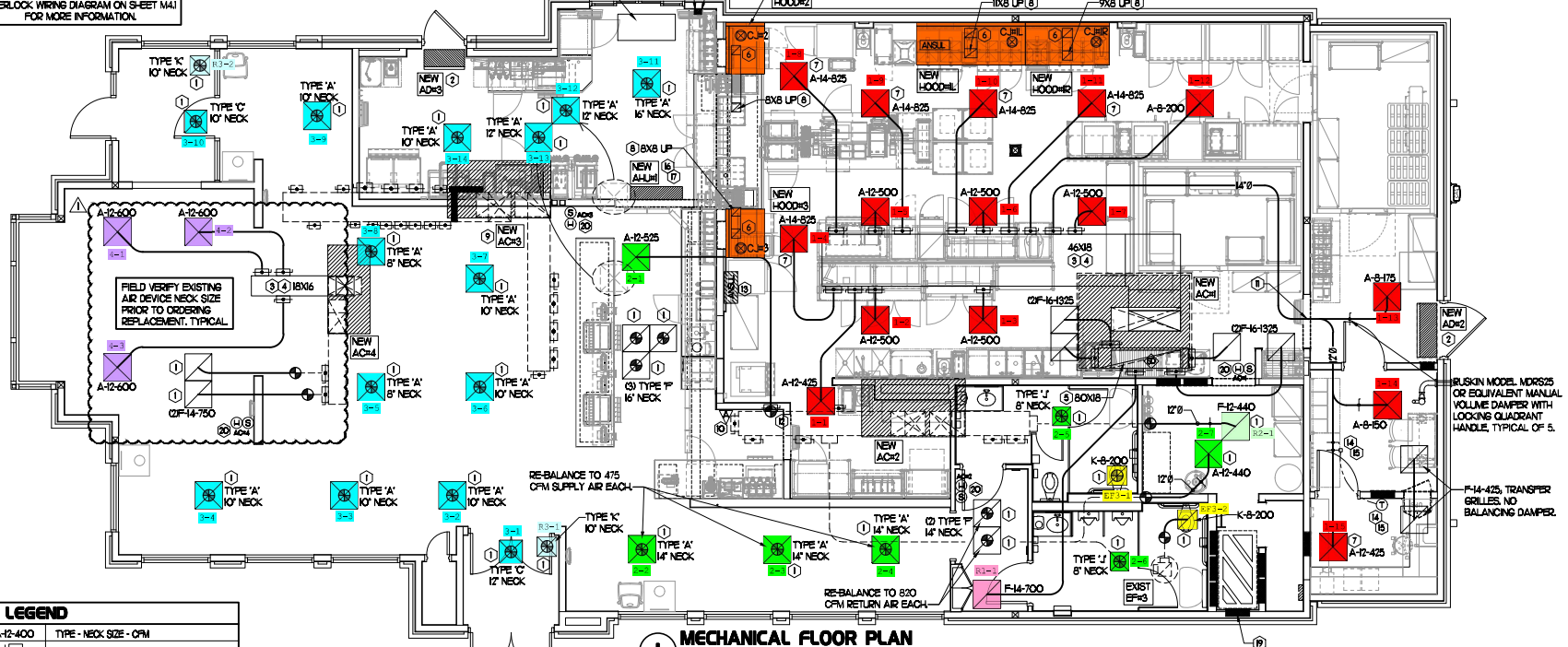
H.E.S. SYSTEM
MECHANICAL CONTRACTOR TO PROVIDE AND INSTALL SUNCOAST H.E.S. SYSTEM FOR ALL NEW HOODS. SEE HOOD FAN/EQUIPMENT INTERLOCK WIRING DIAGRAM ON SHEET M-1 FOR MORE INFORMATION.

NEW AIR CURTAIN, ADH1 MOUNTED IN CEILING GRID, CENTERED ON THE DOOR, AT 4" OFF THE EXTERIOR WALL. MECHANICAL CONTRACTOR SHALL ADJUST AIR DEFLECTORS TOWARD AIR DIVERTER BOX.

AIR CURTAIN REMOTE WALL SWITCHES BY MECHANICAL REFER TO AIR DOOR SCHEDULE AND AIR CURTAIN WIRING DIAGRAM FOR FURTHER INFORMATION. COORDINATE EXACT LOCATION FOR SWITCHES WITH KITCHEN EQUIPMENT AND PLANS.

HOLD DUCT AT ACH1 AS HIGH AS POSSIBLE DUE TO LIMITED CLEARANCE ABOVE CEILING.

EXISTING CONDITIONS SHOWN ARE FROM PREVIOUS DRAWINGS. MECHANICAL CONTRACTOR SHALL VERIFY EXACT LOCATIONS OF ALL DUCT AND DIFFUSERS. IF MAJOR DIFFERENCES OCCUR IN FIELD, CONTACT CHICK-FIL-A CONSTRUCTION MANAGER.



LEGEND

A-12-400	TYPE - NECK SIZE - CFM
+	SPIN-IN FITTING, M.I.D. NO SCOOP
⊕	REMOTE TEMPERATURE SENSOR
⊕	REMOTE HUMIDITY SENSOR
⊕	SMOKE DETECTOR
A	GREASE ACCESS DOOR TYPE
→	DIRECTION OF THROW
⊕	KEY NOTE REFERENCE
+	EXISTING START COLLAR
+	EXISTING RUNNOUT TO REMAIN
+	EXISTING RETURN/EXHAUST (TYP)
+	EXISTING SUPPLY DIFFUSER (TYP)
+	NEW RETURN/EXHAUST, UNO. (TYP)
+	NEW SUPPLY DIFFUSER, UNO. (TYP)
+	NEW DUCT (TYP)
+	SMOKE DETECTOR TEST/RESET STATION

- SHEET NOTES**
- DUCT SIZES SERVING DIFFUSERS AND GRILLES ARE SAME SIZE AS DIFFUSER OR GRILLE NECK UNLESS NOTED OTHERWISE.
 - REFER TO ELEVATIONS ON M-1 AND HOOD DETAILS ON M-11 FOR CAPTURE, LET FANS DUCTING REQUIREMENTS.
 - HARDPIPE SHALL BE USED FOR ALL TAKE-OFFS EXCEPT WHERE ALLOWED BY DETAIL. UNLESS USE OF FLEXIBLE DUCT SHALL BE LIMITED TO THOSE SITUATIONS WHERE NO OTHER MEANS TO ACCOMPLISH ROUTING IS POSSIBLE.
 - COORDINATE NEW WORK WITH EXISTING CONDUITS, STRUCTURE AND PIPING. FIELD VERIFY EXISTING CONDITIONS PRIOR TO COMMENCING WORK. CONTRACTOR TO NOTIFY DESIGN TEAM WITHOUT DELAY IF ACTUAL LOCATION OF EXISTING MECHANICAL EQUIPMENT DOES NOT MATCH FLOOR PLAN.
 - MECHANICAL CONTRACTOR SHALL BALANCE HVAC SYSTEM AS SHOWN ON THIS PLAN & IN SCHEDULES ON SHEET M-1. IF AIRFLOWS DIFFER BY MORE THAN 5%, CONTACT CFA CONSTRUCTION MANAGER. TEST AND BALANCE REPORT SHALL BE DONE PRIOR TO STORE TURNOVER AND SUBMITTED TO CFA'S CONSTRUCTION MANAGER.

- KEY NOTES (THIS SHEET ONLY)**
- CONNECT NEW AIR DEVICE TO EXISTING TAKE-OFF. IF NECESSARY, MECHANICAL CONTRACTOR SHALL PROVIDE AND INSTALL NEW DUCT IN ORDER TO MAKE CONNECTION TO AIR DEVICE IN NEW LOCATION. ANY FLEX DUCT USED SHALL NOT BE LONGER THAN 4'-0". SEE DETAIL M-11. COORDINATE AIR DEVICE LOCATIONS WITH ARCHITECTURAL REFLECTED CEILING PLAN.
 - AIR CURTAIN MOUNTED OVER DOOR HEADER AT 17" AFF TO BOTTOM OF UNIT. PROVIDE BLOCKING IN WALL BEHIND AIR CURTAIN. USE FACTORY PREPARED MOUNTING HOLES ON BACK SIDE OF AIR CURTAIN ONLY. ATTACH AIR CURTAIN TO WALL USING 3/8" LAG BOLTS, LENGTH AS REQUIRED TO FULLY PENETRATE BLOCKING. LOCATE MAGNETIC CONTACT TYPE MICROSWITCH IN DOOR FRAME ON STRIKE SIDE.
 - BRANCH TAKE-OFFS SHALL NOT BE LOCATED CLOSER THAN 3'-0" FROM ANY ELBOW INCLUDING THE SUPPLY AIR DROP FROM CURB.
 - TRANSITION IN VERTICAL DROP FROM FULL SIZE OF CLUB OPENING TO SIZE SHOWN. TRANSITION WITH-IN CLUB WHERE REQUIRED TO AVOID STRUCTURE. NO TURNING VANES IN ELBOW, INCLUDING THE SUPPLY AIR DROP FROM UNIT.
 - TRANSITION IN VERTICAL DROP FROM FULL SIZE OF CLUB OPENING TO SIZE SHOWN. TRANSITION WITH-IN CLUB WHERE REQUIRED TO AVOID STRUCTURE. NO TURNING VANES IN ELBOW.
 - HALTON MED DAMPER AT HOOD COLLAR BY MECHANICAL CONTRACTOR. REFER TO SHEET M-1 AND M-11 FOR FURTHER INFORMATION.
 - MECHANICAL CONTRACTOR TO ADJUST PATTERN DEFLECTORS TO THROW STRAIGHT DOWN.
 - GREASE DUCT UP THRU ROOF FROM FULL SIZE OF MED COLLAR. OFFSETS THRU ROOF NOT TO BE GREATER THAN 45 DEGREES. SEE SHEET M-12 FOR CONTINUATION.
 - GO TO CONFIRM EXACT LOCATION OF AC-3 MAIN DUCT RUNS RELATIVE TO PROPOSED NEW WALL PRIOR TO START OF CONSTRUCTION. CONTACT ALL PM OR ADR IF DETERMINED THERE IS A CONFLICT.
 - MOUNT NEW SMOKE DETECTOR TEST/RESET STATIONS FOR ALL A/C UNITS ON KITCHEN WALL. COORDINATE EXACT LOCATION WITH KITCHEN ELEVATIONS AND ELECTRICAL. CONTACT SUNCOAST ENVIRONMENTAL CONTROLS AT 1-877-544-6679 TO PURCHASE A NEW SMOKE DETECTOR TEST/RESET STATION FOR EACH RTU.
 - ROUTE DUCT BETWEEN WALL STUDS ABOVE CEILING. COORDINATE WITH ARCH AND STRUCTURAL FOR EXACT LOCATION. USE T-WRAP AT WALL PENETRATION.
 - PROVIDE & INSTALL NEW SPIN-IN COLLAR AND ROUTE NEW DUCT TO NEW GRILLE AS SHOWN.
 - ANSUL UTILITY CABINET. LOCATE TOP OF CABINET 0'-2" BELOW CEILING. COORDINATE FINAL MOUNTING LOCATION WITH KITCHEN EQUIPMENT.
 - YOUNG REGULATOR 12" MODEL 2010 ROUND ZONE DAMPER WITH MODEL T-3020 AUTOMATIC CHANGEOVER THERMOSTAT. MOUNT TSTAT AT 4'-0" AFF. POWER OPENING CLOSE ADJUST MECHANICAL LIMIT FOR 50 CFM MINIMUM AIRFLOW. CHICK-FIL-A HAS A NATIONAL ACCOUNT WITH TOM BARRON COMPANY FOR THE ZONE DAMPER. THE MECHANICAL CONTRACTOR SHALL PURCHASE THE ZONE DAMPER DIRECTLY FROM TOM BARRON COMPANY. CONTACT MR. SCOTT GEORGE AT 404-291-1010, FOR PRICING AND AVAILABILITY. ZONE DAMPERS NOT PURCHASED THRU TOM BARRON COMPANY WILL NOT BE ACCEPTED.
 - PROVIDE 120V/24V 50 VA TRANSFORMER TO SERVE YOUNG REGULATOR ZONE DAMPER ACTUATOR AND THERMOSTAT. POWER TRANSFORMER FROM 120V POWER CIRCUIT THAT REMAINS LIVE 24/7. PROVIDE ALL NECESSARY WIRING AND COMPONENTS TO MAKE CONTROL AND POWER CONNECTIONS TO TRANSFORMER, ZONE DAMPER, AND THERMOSTAT PER MANUFACTURER'S IOM. SEE DETAIL ON SHEET M-11 FOR MORE INFORMATION.
 - MOUNT AIR HANDLER ON OVERHEAD WALL ABOVE CASED OPENING. MOUNT UNIT AT 12" ABOVE CASED OPENING. ROUTE REFRIGERANT PIPING ABOVE CEILING AND UP THRU ROOF TO CONDENSING UNIT. CURB SEE SHEET M-12 FOR CONDENSING UNIT LOCATION. REFRIGERANT PIPING BELOW ROOF SHALL BE HIDDEN WITH WALLS AND CEILING.
 - ROUTE CONDENSATE ABOVE CEILING FROM 24" LIFT AND DOWN IN WALL. CAPACITY TO AN EXIT POINT 12" ABOVE FLOOR DRAIN TO TERMINATE INTO FLOOR DRAIN LOCATED BEHIND ICE MAKER IN DRIVE THRU WITH CODE APPROVED AIR GAP. COORDINATE EXACT LOCATION OF DRAIN WITH PLUMBING PLANS. CONDENSATE PIPING SHALL BE TYPE 'C' COPPER WITH 10% AMIARTEX INSULATION. CONDENSATE MUST SLOPE MIN 1/8" PER FOOT TO TERMINATION POINT. CONTRACTOR SHALL INSTALL A CONDENSATE LIFT PUMP IN ORDER TO ROUTE CONDENSATE ABOVE CEILING.
 - MOUNT ALH1 THERMOSTAT ON WALL NEXT TO ADH1 REMOTE WALL SWITCHES. SEE SCHEDULE ON SHEET M-1 FOR INTERLOCK WITH T500 PANEL.
 - CONTACT SUNCOAST ENVIRONMENTAL CONTROLS TO PURCHASE A NEW TSTAT FOR EACH NEW RTU. NEW TSTATS SHALL BE INSTALLED IN EXISTING CFA T500 PANEL. CONTROL WIRING TERMINATIONS BETWEEN NEW TSTATS, NEW SENSORS, AND NEW RTUS BY MECHANICAL CONTRACTOR. REFER TO WIRING DIAGRAM ON SHEET M-11.
 - MOUNT NEW REMOTE TEMP SENSOR AND NEW LENOX HUMIDITY SENSOR FOR ROOFTOP UNIT AS NOTED BELOW (OR ABOVE W/ANSOOTS IF APPLICABLE). ROUTE NEW WIRING FOR NEW REMOTE TEMP SENSOR TO NEW TSTAT IN CFA T500 PANEL. ROUTE NEW WIRING FOR NEW LENOX HUMIDITY SENSOR TO UNIT ON ROOF. REFER TO WIRING DIAGRAM ON SHEET M-11.
 - ACH1 MOUNT NEW REMOTE TEMP SENSOR ON WALL AT 5'-8" AFF. COORDINATE FINAL MOUNTING LOCATION IN FIELD WITH KITCHEN EQUIPMENT, SHELVING AND ELECTRICAL. MOUNT NEW LENOX HUMIDITY SENSOR DIRECTLY ABOVE REMOTE TEMP SENSOR.
 - ACH2 MOUNT NEW SENSORS IN THE SAME LOCATION AS DEMOLISHED SENSORS.
 - ACH3 & ACH4 MOUNT NEW REMOTE TEMP SENSOR ON WALL AT 5'-0" AFF. MOUNT NEW LENOX HUMIDITY SENSOR DIRECTLY ABOVE REMOTE TEMP SENSOR.

TOTAL AIR BALANCE SCHEDULE

EQUIPMENT MARK	ACH1 (NEW)	ACH2 (NEW)	ACH3 (NEW)	ACH4 (NEW)	EPH (NEW)	EP2 (NEW)	EP3 (EXIST)	TOTAL
SERVES	KITCHEN	DINING	MAIN DINING	PLAY AREA	HOODH1	HOODH2	REST ROOMS	
SUPPLY AIR CFM	8,000	2,830	5,000	1,800				17,630
RETURN AIR CFM	6,000	2,080	3,645	1,500				13,225
OUTSIDE AIR CFM	2,000	750	1,355	300				4,405
EXHAUST CFM					1,912	1,402	400	-3,714
PRESSURIZATION								+691

REMARKS: ADJUST AND VERIFY BALANCE OF ALL HVAC EQUIPMENT IS AS SHOWN IN ORDER TO MAINTAIN BUILDING AIR BALANCE.



Chick-fil-A
5200 Buffington Road
Atlanta, Georgia 30349

Kurzynski & Associates
CONSULTING ENGINEERS
2705 Labadie Place - Suite One
Nashville, Tennessee 37214
Telephone: (615) 255-5203



CHICK-FIL-A
Ridley
405 MacDade Blvd.
Folsom, PA 19033

FSR#01684
BUILDING TYPE / SITE: SODE
RELEASE: v11.2020

REVISION SCHEDULE

NO.	DATE	DESCRIPTION	BY	REASON
4	07/13/22	Prebid Notes		

CONSULTANT PROJECT # 20146.HF.R
PRINTED FOR: CONSTRUCTION
DATE: 02/26/2021
DRAWN BY: DSF

MECHANICAL
FLOOR PLAN
SHEET NUMBER

M1.1