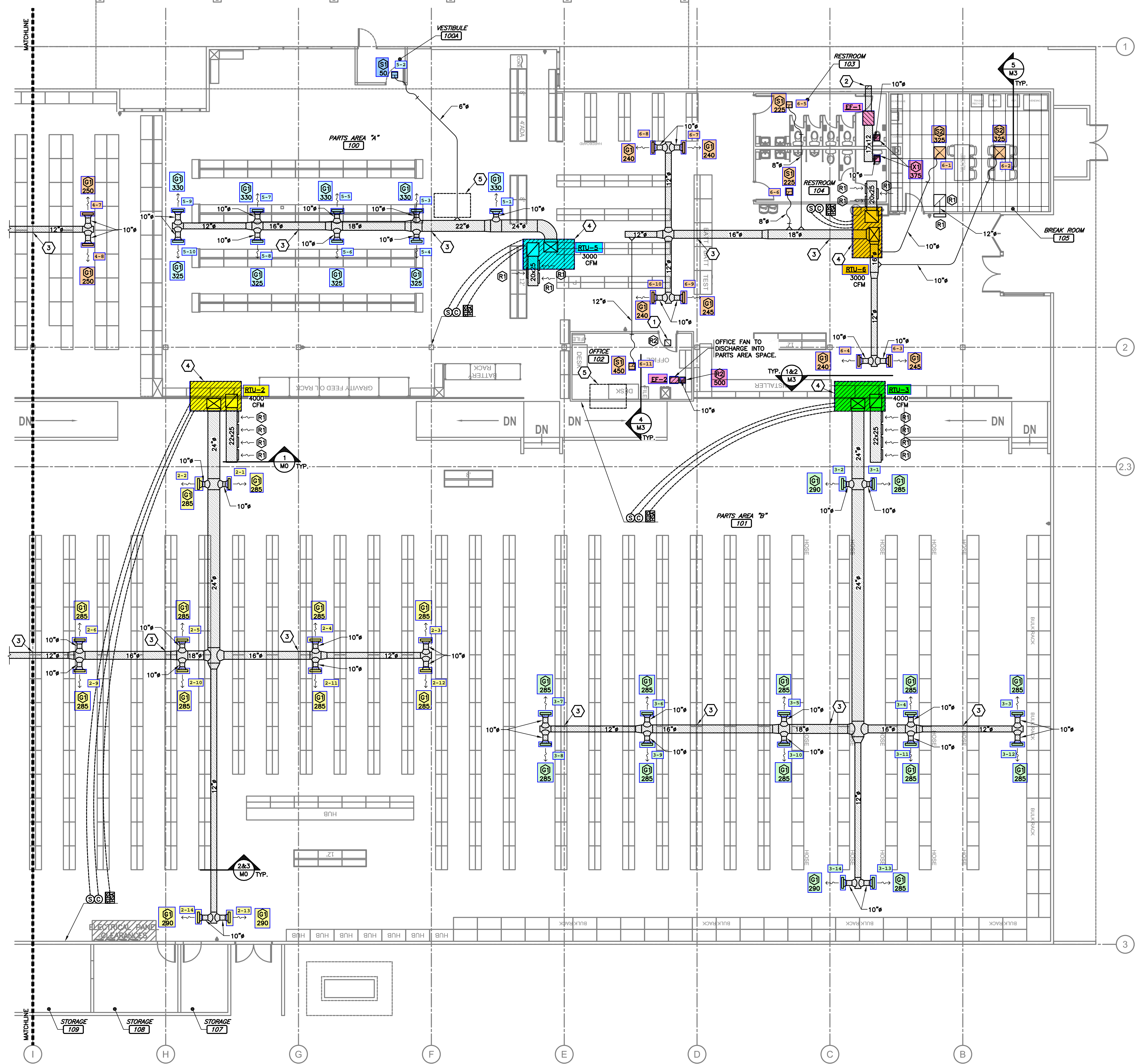


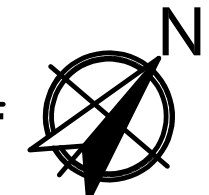
HVAC - KEYNOTES

- 1 12"x12" DUCT WITH ELBOW FROM "R2" TO JUST ABOVE THE CEILING PLATFORM.
- 2 WALL CAP 750 CFM EXHAUST. ARCHITECTURAL ELEVATIONS SHOW DIMENSIONED LOCATION.
- 3 KEEP MAIN DUCT TRUNK AS HIGH AS POSSIBLE. PROVIDE 45 DEGREE BENDS TO DIP DUCTWORK BELOW BEAMS AS REQUIRED TO KEEP DUCTWORK ABOVE LIGHTING.
- 4 NEW RTU AT EXISTING ROOF CURB. REMOVE EXISTING RTU AND PROVIDE NEW RTU WITH COMPATIBLE ROOF CURB ADAPTER.
- 5 RTU IS EXISTING AND SHALL BE ABANDONED IN PLACE. EXISTING DUCTWORK SHALL BE REMOVED AND CAPPED AT RTU OPENINGS.



HVAC PLAN A

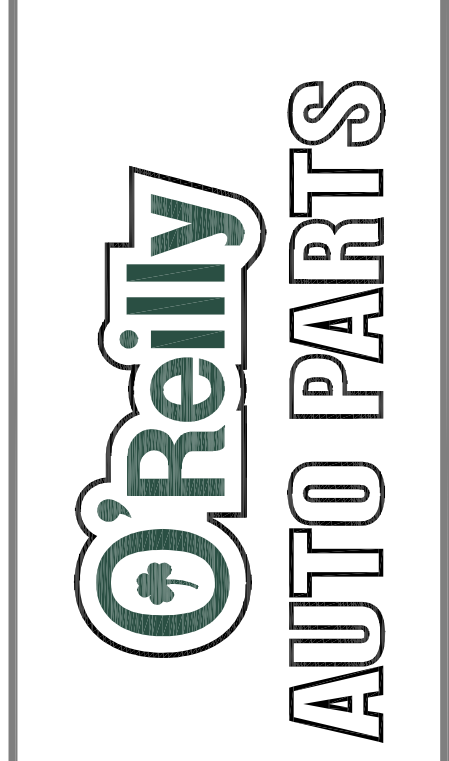
SCALE: 1/8" = 1'-0"



DATE SIGNED: 11.14.2023
 ENGINEER OF RECORD:
 RYAN S. JONES
 ENGINEER LICENSE NUMBER:
 E213311
 SHEETS BEARING THIS SEAL ARE AUTHENTICATED. RESPONSIBILITY FOR ALL OTHER PLANS, SPECIFICATIONS OR INSTRUMENTS ARE DISCLAIMED.

CJD
 Engineering | Energy | Innovation
 2225 West Cholesterol Boulevard, Suite 200, Springfield, MA 01107
 P: 417.877.1700
 www.cjd-eng.com

PROJECT:
O'REILLY AUTO PARTS STORE - CN3
 1500 MONUMENT RD
 CONCORD, CA 94526
HVAC PLAN A



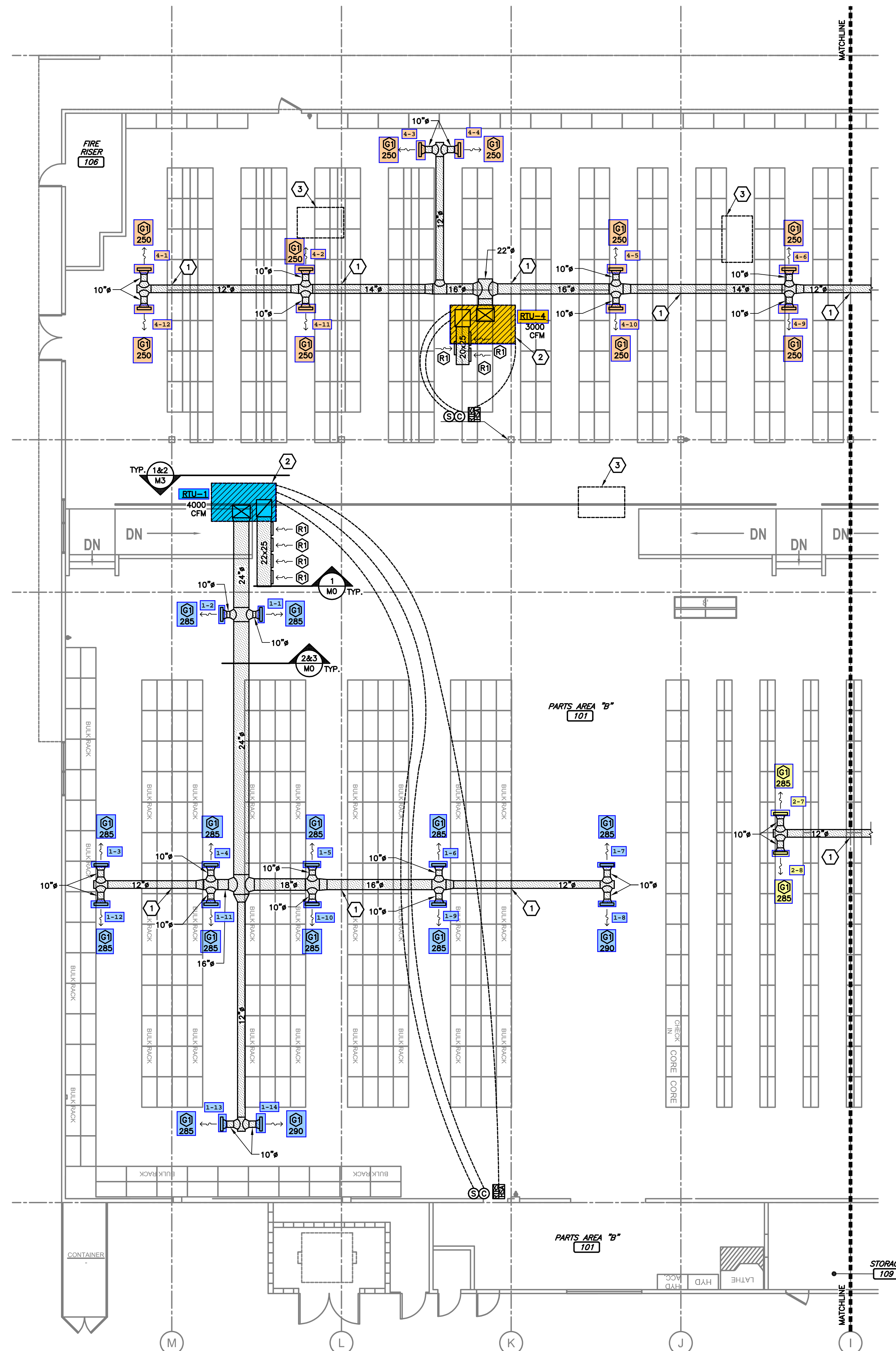
REV.	DESCRIPTION	DATE

DRAWN BY: JBR
 CHECKED BY: CRF
 DATE: 11/14/23
 PROJECT NUMBER: CN3
 SHEET NUMBER:

M1

HVAC - KEYNOTES

- 1 KEEP MAIN DUCT TRUNK AS HIGH AS POSSIBLE. PROVIDE 45 DEGREE BENDS TO DIP DUCTWORK BELOW BEAMS AS REQUIRED TO KEEP DUCTWORK ABOVE LIGHTING.
- 2 NEW RTU AT EXISTING ROOF CURB. REMOVE EXISTING RTU AND PROVIDE NEW RTU WITH COMPATIBLE ROOF CURB ADAPTER.
- 3 RTU IS EXISTING AND SHALL BE ABANDONED IN PLACE. EXISTING DUCTWORK SHALL BE REMOVED AND CAPPED AT RTU OPENINGS.



HVAC PLAN B

SCALE: 1/8" = 1'-0"



DATE SIGNED: 11.14.2023
 ENGINEER OF RECORD
RYAN S. JONES
 ENGINEER LICENSE NUMBER
 E213311
 SHEETS BEARING THIS SEAL ARE AUTHENTICATED. RESPONSIBILITY FOR ALL OTHER PLANS, SPECIFICATIONS OR INSTRUMENTS ARE DISCLAIMED.

CJD
 Engineering | Energy | Innovation
 2225 West Chestersfield Boulevard, Suite 200, Springfield, MA 01107
 P: 417.877.1700
 www.cjd-eng.com

PROJECT:
O'REILLY AUTO PARTS STORE - CN3
 1500 MONUMENT RD
 CONCORD, CA 94526
HVAC PLAN B



REV. DESCRIPTION DATE

DRAWN BY: JBR
 DATE: 11/14/23
 PROJECT NUMBER: CN3
 SHEET NUMBER:

CHECKED BY: CRF
M2