

Direct Drive Centrifugal Roof Exhaust Fan

MARK INFORMATION		FAN INFORMATION					MOTOR INFORMATION						
QTY	MARK	MODEL	VOLUME (CFM)	TOTAL EXTERNAL SP (IN WG)	FAN RPM	OPERATING POWER (HP)	WEIGHT (LB.)	SIZE (HP)	V/CP	ENCLOSURE	MOTOR RPM	WINDINGS	NEC FLA*
1	PRV-1 Restroom	XRED-090-VG	375	0.5	1,466	0.06	31	0.1	115/60/1	TN	1725	1	NA

*NEC FLA - Based on table 430.250 or 430.248 of National Electrical Code 2020. Actual motor FLA may vary for sizing thermal overload, consult factory"

PRV-1 Restroom : SELECTED OPTIONS AND ACCESSORIES

Standard Curt Cap Size - 17 Square
 UL/ULI 705 Listed - "Power Ventilators"
 Switch, NEMA-1, Toggle, Shipped with Unit
 Damper Shipped Loose, BD-100-PB-10X10, Gravity Operated, Not Coated, Nominal Size
 Birdscreen, Galvanized, nom. 84% Free Area
 Composite Wheel Material

Ceiling Exhaust Fan

MARK INFORMATION		FAN INFORMATION					MOTOR INFORMATION						
QTY	MARK	MODEL	VOLUME (CFM)	TOTAL EXTERNAL SP (IN WG)	FAN RPM	OPERATING POWER (HP)	WEIGHT (LB.)	SIZE (HP)	V/CP	ENCLOSURE	MOTOR RPM	WINDINGS	NEC FLA*
2	EF-1A	XCR-B80	75	0.125	881	0.01	10	0	115/60/1	OP	900	1	

EF-1A : SELECTED OPTIONS AND ACCESSORIES

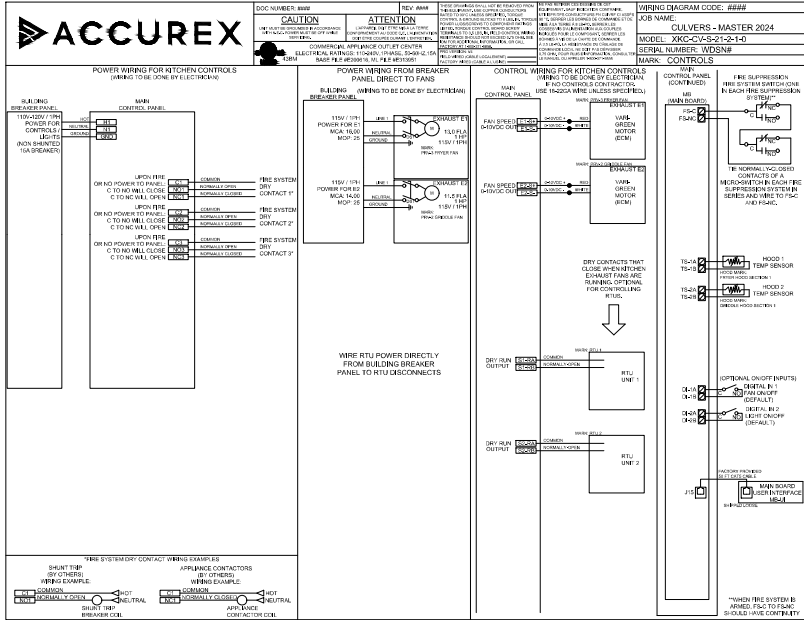
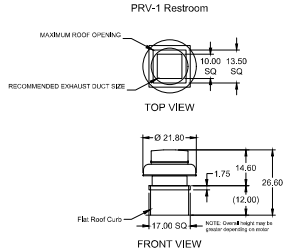
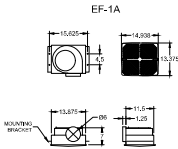
UL/ULI 507 Listed - Electric Fan
 Solid State Speed Control, 6 Amp, Mounted and Wired Internally
 Round Hooded Wall Cap, (PN: WC-6) Shipped Loose
 Round Duct Connection
 Adjustable easy installation mounting bracket
 Standard Grille
 Polypropylene Wheel Material
 Can Be Used to Comply with: ASHRAE 62.2 and Washington State Energy Code

CONTROL INFORMATION

MARK		ELECTRICAL CONTROL PACKAGE			USER INTERFACE	
MARK	MODEL	LOCATION	TYPE	LOCATION		
CONTROLS	XKC-CV-S-22-2-1-0	SHIP LOOSE ENCLOSURE	FULL COLOR TOUCHSCREEN	SHIP LOOSE		

FANS CONTROLLED											
FAN #	TYPE	FAN	ZONE	CFM	MOTOR HP	MOTOR VOLT	CYCLE	MOTOR PHASE	MOTOR STARTER IN PANEL	VFD IN PANEL	
1	SUPPLY	S1	RTU-1	1	1500	1	208	60	3	NO	NO
2	SUPPLY	S2	RTU-2	2	1500	1	208	60	3	NO	NO
3	EXHAUST	E1	PRV-2 GRIDDLE FAN	2	1500	1	115	60	1	NO	NO
4	EXHAUST	E2	PRV-3 FRYER FAN	1	1500	1	115	60	1	NO	NO

CONTROL FEATURES		SPECIAL DESIGN REQUESTS	
TEMP SENSORS (FACTORY INSTALLED) - QTY. 2		SDR #K2000462 - CULVERS CONTROL PANEL - EXTRA SET OF FIRE CONTACTS - REVISE WIRING DIAGRAMS	
DRY FIRE CONTACTS - QTY. 2			
EXHAUST MAX DURING FIRE			
SUPPLY OFF DURING FIRE			



PROJECT: 7/17/2024
 ACCUREX - WI, IA
 PHILLIP KRAFT
 PHILLIP.KRAFT@ACCUREX.COM
 262.221.7165

ACCUREX

DATE: 02-26-2025

© 2025
 WISCONSIN PROFESSIONAL ENGINEER
 LOWELL J. LARSON
 E-3108
 BYRON, WI
 2/20/2025

NEW CULVERS RESTAURANT
 6123 Truax Lane
 Eau Claire, WI 54703
 County of EAU CLAIRE

OWNER: ANIMON REAL ESTATE, LLC
 200 South Main Street
 Eau Claire, WI 54601
 Danna and Kristin Animon
 (715) 771-9272 or (715) 271-2325
 danna@animon.com

OWNER: CULMANN ASSOCIATES ARCHITECTS P.C.
 200 South Main Street
 Eau Claire, WI 54601
 815-544-7390 Phone
 © DAA - All rights reserved. Any copying, transmitting or distribution requires DAA written approval.

FAN SCHEDULE & DETAILS
 Date: 02-26-2025
 Revision: M204