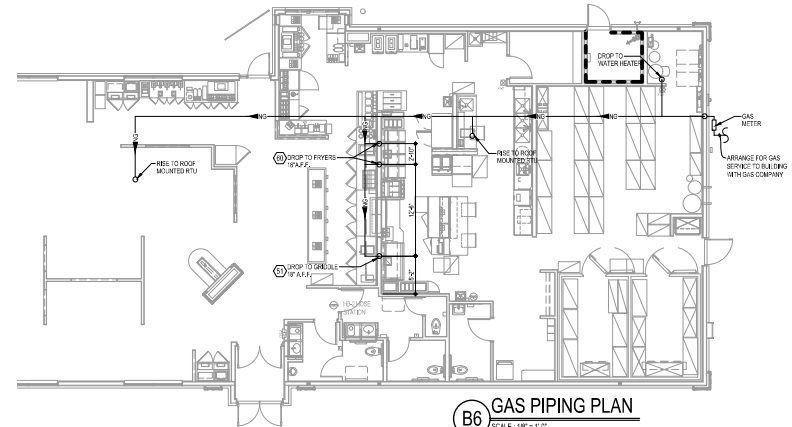
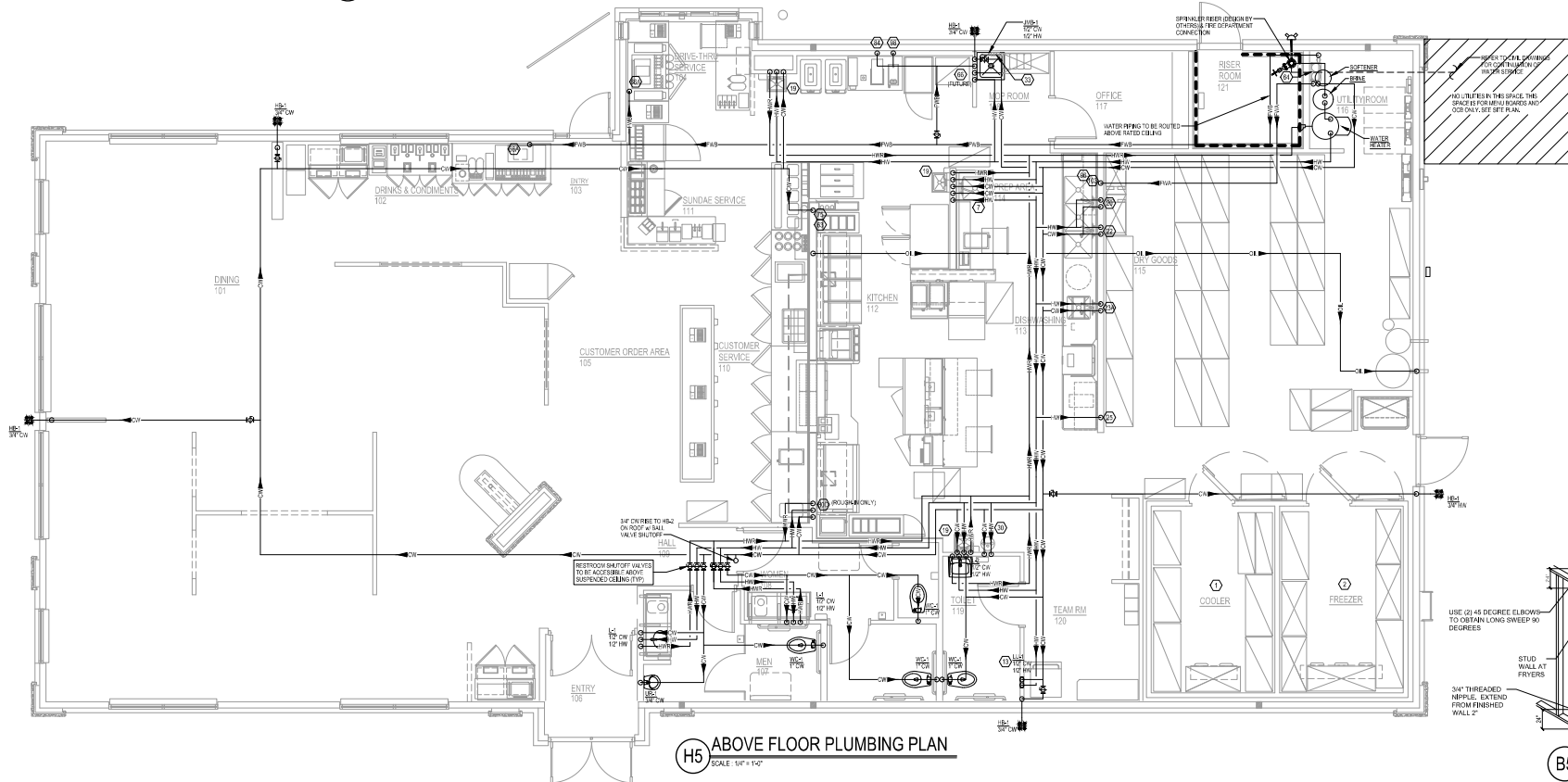


**B2 VENT THRU ROOF PLAN**  
SCALE: 1/8" = 1'-0"



**B6 GAS PIPING PLAN**  
SCALE: 1/8" = 1'-0"

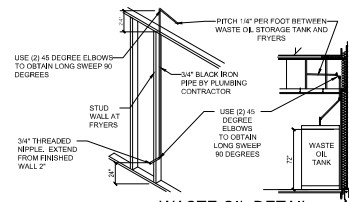


**H5 ABOVE FLOOR PLUMBING PLAN**  
SCALE: 1/8" = 1'-0"

LEGEND	
— HW —	HOT WATER SUPPLY
— CW —	COLD WATER SUPPLY
— HR —	HOT WATER RETURN
— CR —	COLD WATER RETURN
— W —	WASTE OIL
— F —	FRESH WATER
— G —	GAS PIPING
○	PRIOR TO RENEWABLE ENERGY CODES IN RESIDENTIAL FOOD SERVICE LOCATIONS SHOWN ON P102

EXHIBIT WATER SUPPLY	
WATER TEE SUPPLY BY FOOD SERVICE EQUIPMENT CONTRACTOR, SEEN REQUIREMENTS IN SUPPLY.	
(FMA)	• SODA SYSTEM CARBONATORS
	• CONDIMENT COOLER (HW)
(PWC)	• SINKS THROUGH-COUNTER (HW)
	• COFFEE MAKER (HW)
	• K232 TEA MAKER (HW)
	• 821 MACHO CUP (HW)
	• K21 MAKER-C-EST (HW)



**B5 WASTE OIL DETAIL**  
NO SCALE

**NEW CULVER'S RESTAURANT**  
6123 Truax Lane  
Eau Claire, WI 54703  
County ofEAU CLAIRE

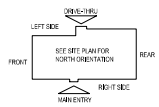
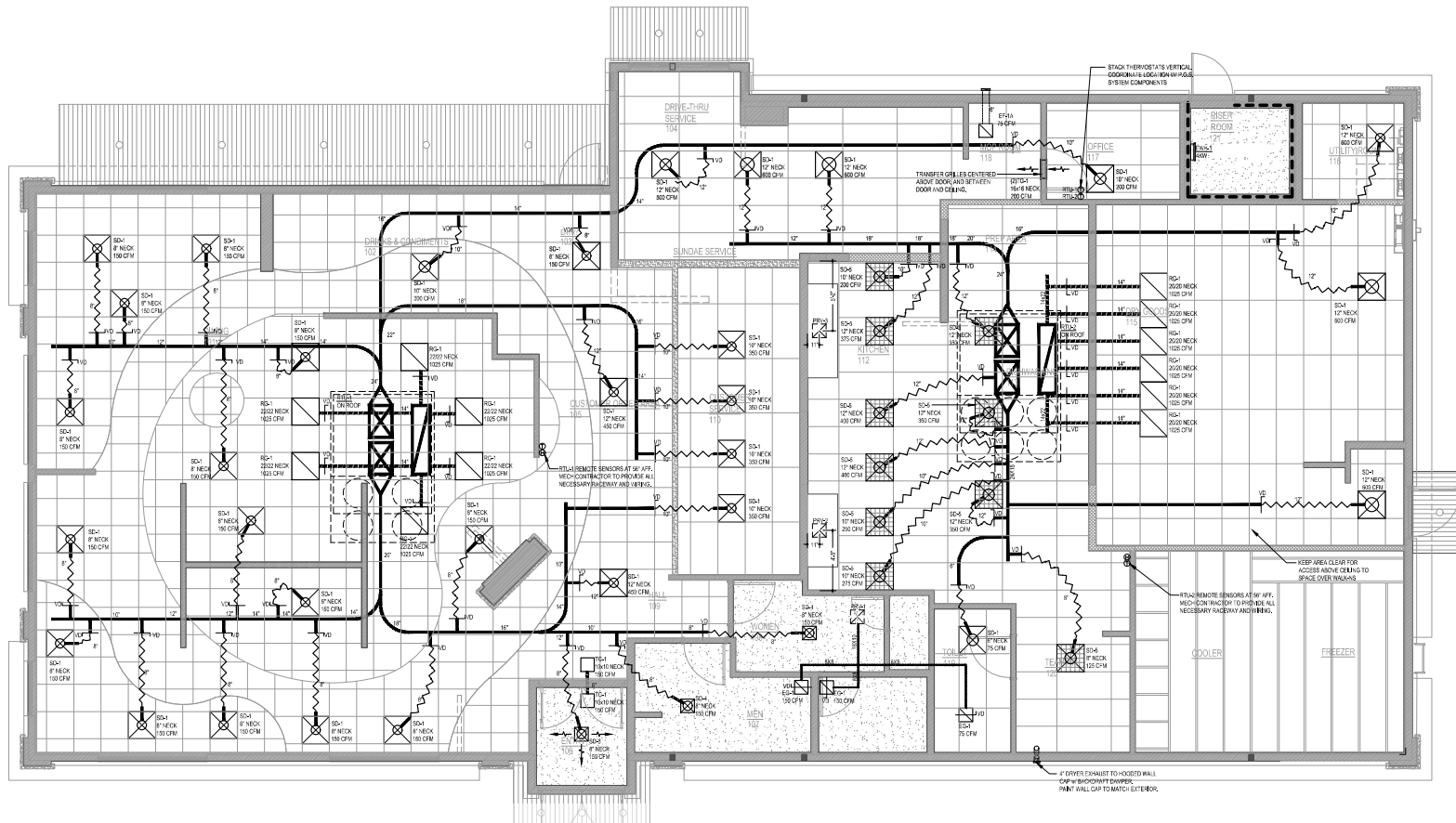
**OWNER:** ARNISON REAL ESTATE, LLC  
200 South Main Street, Suite 100  
Eau Claire, WI 54601  
815-544-7190 Phone  
© D.A. All rights reserved. Any copying, transmission or distribution requires the written consent of the architect.

**ARCHITECT:** CLIMAX ASSOCIATES ARCHITECTS P.C.  
100 South Main Street, Suite 100  
Eau Claire, WI 54601  
815-544-7190 Phone  
© D.A. All rights reserved. Any copying, transmission or distribution requires the written consent of the architect.

**DATE:** 02-25-2025  
**REVISION:**

**GAS PIPING, ABOVE FLOOR PLUMBING, VENT THRU ROOF**  
2024-119

**P102**



**E5 HVAC PLAN**  
SCALE: 1/4" = 1'-0"

**SUPPLY DUCTWORK SIZING TABLE\***

ROUND		RECTANGULAR	
SIZE	CFM RANGE	SIZE	CFM RANGE
8"	115 - 235	8"x8"	205 - 300
10"	240 - 435	10"x8"	305 - 400
12"	440 - 710	10"x10"	405 - 550
14"	715 - 1,070	12"x10"	555 - 700
16"	1,075 - 1,530	12"x12"	705 - 900
18"	1,535 - 2,090	14"x12"	905 - 1,305
20"	2,095 - 2,760	16"x12"	1,110 - 1,515
22"	2,765 - 3,550	18"x12"	1,300 - 1,830
24"	3,555 - 4,470	20"x12"	1,525 - 1,740
*CONTRACTOR MAY SUBSTITUTE RECTANGULAR FOR ROUND DUCTWORK ON MAIN RUNS AT THEIR DISCRETION. BRANCHES TO DIFFUSERS TO REMAIN ROUND.			
		24"x12"	1,745 - 1,950
		26"x12"	1,955 - 2,170
		28"x12"	2,175 - 2,400
		30"x12"	2,405 - 2,630
		32"x12"	2,635 - 2,840
		34"x12"	2,845 - 3,070
		36"x12"	3,075 - 3,290
		38"x12"	3,295 - 3,520
		36"x14"	3,525 - 4,420

NOTE: ALL DUCTWORK TO BE LOCATED IN TRUSS SPACE WHERE POSSIBLE. SEE TRUSS PLAN.  
 HVAC SETPOINTS RECOMMENDED BY CONCRETE OPERATIONAL GUIDELINES:  
 1. WINTER: HEATING TO 65 DEG. COOLING TO 75 DEG.  
 2. WINTER: HEATING 68 DEG. COOLING 64 DEG.  
 ALL MECHANICAL ROOF EQUIPMENT REQUIRES STRAPS TO RESIST THE WIND PRESSURES DETERMINED IN ACCORDANCE WITH THE INTERNATIONAL BUILDING CODE. SEE STRUCTURAL PLANS FOR SPECIFICATIONS.

**DIFFUSER, REGISTER, AND GRILLE SCHEDULE**

TAG	SERVICE	TYPE	MATERIAL	THROW	FACE	NECK	MOUNTING	MANUFACTURER/MODEL	Notes
SD4	SUPPLY	COVERED	STEEL	AWAY	24X24	SEE PLAN	LAYAN	RAYMON PRO/GRD	2.4
SD4 - NOT USED									
SD4	SUPPLY	COVERED	STEEL	AWAY	20X20	SEE PLAN	SURFACE	RAYMON PRO/GRD	2.4
SD4	SUPPLY	COVERED	STEEL	AWAY	20X20	SEE PLAN	SURFACE	RAYMON PRO/GRD	2.1
SD4	SUPPLY	EXPOSED/PAINTED	STEEL	EXPOSED/PAINTED	24X24	SEE PLAN	LAYAN	RAYMON PRO	2.4
RS4	RETURN	SQUARE ECCENTRIC	ALUMINUM	N/A	24X24	32x20	LAYAN	RAYMON PRO/RET	2.3.4
ES1	EXHAUST	COVERED GRILLE	ALUMINUM	N/A	20X20	SEE PLAN	SURFACE	RAYMON BRAND	1.2.4
TS1	TRANSFER	COVERED GRILLE	ALUMINUM	N/A	SEE PLAN	SEE PLAN	SURFACE	RAYMON BRAND	2.4

**DIFFUSER NOTES:**  
 1. PROVIDE W/ ADJUSTABLE OPPOSED BLADE DAMPER  
 2. VERIFY ALL DIFFUSERS AND RETURN GRILLE COLORS WITH OWNER AND ARCHITECT  
 3. PROVIDE W/ 22GZ FLENUM BOB.  
 4. ALL DIFFUSERS AND RETURNS LOCATED IN BLACK CEILING SHALL BE FLAT BLACK FINISH.

© 2025  
 WISCONSIN PROFESSIONAL ENGINEER  
 2/20/2025

**NEW CULVER'S RESTAURANT**  
**6123 Truax Lane**  
 Eau Claire, WI 54703  
 County ofEAU CLAIRE

**Culver's**  
 Culver's Franchising System, Inc.  
 1240 Water Street  
 Prairie du Sac, WI 53578  
 800-845-5780

**OWNER:**  
 JARINSON REAL ESTATE, LLC  
 800 S. Main Street  
 Eau Claire, WI 54601  
 Dennis and Kristin Jarinson  
 (715) 717-2575 or (715) 271-2325  
 djarinson@jarinson.com

**ARCHITECTS:**  
 CLIMAX ASSOCIATES ARCHITECTS P.C.  
 800 S. Main Street  
 Eau Claire, WI 54601  
 815-544-7190 Phone  
 (715) 717-2575 or (715) 271-2325  
 djarinson@jarinson.com

Revision: 02-20-2025

Date: 02-20-2025

HVAC PLAN, DIFFUSER SCHEDULE

2024-119

(M101)





HOOD INFORMATION																	
HOOD NO.	MARK	MODEL	HOOD DIMENSIONS (IN.)			HOOD CONSTR.	COOKING LOAD/DUTY RATING	TOTAL CFM	EXHAUST COLLAR(S)				SUPPLY		TOTAL WEIGHT LBS.	SECTION LOCATION	
			LENGTH	WIDTH	HEIGHT				WIDTH	LENGTH	DIA.	CFM	S.P.	MUA CFM			AC CFM
1	FRYER HOOD	XXEP-83-S	83	TOP 23 BOT 3	FRT 12 BACK 36	430 SS (WHERE EXPOSED)	MEDIUM	1500	T2	T2		1500	0.689			169	SINGLE

HOOD INFORMATION																	
HOOD NO.	MARK	LIGHTING DETAILS			GREASE FILTRATION DETAILS			UTILITY CABINET(S)									
		FIXTURE TYPE	BULB / LAMP INFO	QTY	FOOT CANDLES	TYPE / MODEL	MATERIAL	QTY	SIZE (IN.)	LOCATION	FIRE SYSTEM	CONTROLS					
1	FRYER HOOD					X-TRACTOR (SPARK ARRESTOR INCL.) STAINLESS STEEL	5	16									
							0	20									

**HOOD OPTIONS**

UL 710 LISTED W/ OUT EXHAUST FIRE DAMPER - UL #R25625  
 BACK NON-INTEGRAL AIR SPACE - 3 IN WIDE  
 26 IN HIGH CEILING ENCLOSURES - FRONT LEFT RIGHT - FIELD INSTALLED  
 FACTORY MOUNTED EXHAUST COLLAR(S)  
 PERFORMANCE ENHANCING LIP (PEL) TECHNOLOGY  
 STANDING SEAM CONSTRUCTION FOR SUPERIOR STRENGTH

**SPECIAL DESIGN REQUESTS**

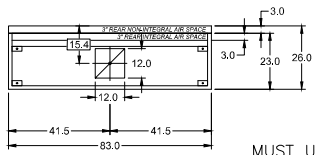
SDR #K1100559 - NEW PITCO 4L FRYER FLUE BYPASS SYSTEM  
 SDR #K1700574 - CULVERS 4VAT FRYER PROCESS - FRYER HOOD  
 SDR #K2000140 - IF FRYMASTER FRYER FLUE BYPASS

Direct Drive Upblast Centrifugal Roof Exhaust Fan				FAN INFORMATION				MOTOR INFORMATION						
MARK INFORMATION				VOLUME (CFM)	TOTAL EXTERNAL SP (IN WG)	FAN RPM	OPERATING POWER (HP)	WEIGHT (LB.)	SIZE (HP)	V/C/P	ENCLOSURE	MOTOR RPM	WINDINGS	NEC FLA*
QTY	MARK	MODEL		1.500	1	1,365	0.46	92	1	115/60/1	OP	1725	1	16
1	PRV-3 Fryer Fan	XCUE-140-VG												

\*NEC FLA - Based on table 430.250 or 430.248 of National Electrical Code 2020. Actual motor FLA may vary for sizing thermal overload, consult factory"

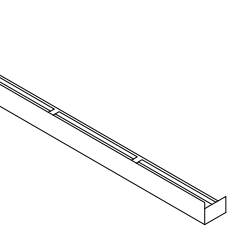
**PRV-3 Fryer Fan - SELECTED OPTIONS AND ACCESSORIES**

One piece fully welded windband  
 Tapered bushing wheel hub  
 Braze/air tube outlet area min. 4.4 sq. in. (sizes 98-420), 2.0 sq. in. (sizes 60-95)  
 Min. windband material thickness: 0.051" aluminum (060-240), 0.064" aluminum (240HP, 240XP), 0.080" aluminum (sizes 300-480)  
 Larger Curb Cap Size - 26 Square  
 UL/cUL 705 Listed - Supplement SC - "Power Ventilators for Restaurant Exh. Appliances" (Formerly UL 762)  
 Switch, NEMA-3R, Toggle.  
 Hinge, Factory Installed  
 High Temp Curb Seal Rated for Continuous Duty at 1500 F (Factory Attached)  
 Grease Trap (PN 475538)  
 Clean-out Port - Factory Installed  
 Conduit Chase Qty 1

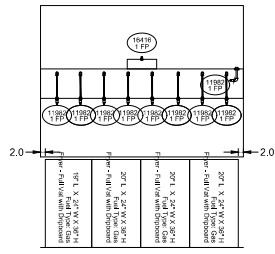


MARK: Fryer Hood PLAN VIEW

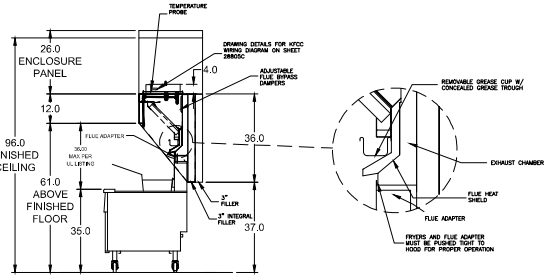
MUST USE WITH PITCO MODEL CU-SSH60W/WR 4VAT FRYER IF FRYMASTER MODEL 41814GF-CFS IS BEING USED, NOTIFY ACCUREX REP



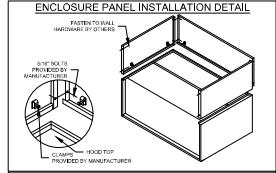
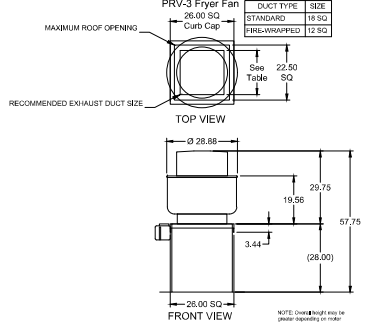
PITCO MODEL CU-SSH60W/WR 4-VAT FRYER FLUE ADAPTER OR FRYMASTER MODEL 41814GF-CFS



SECTION 1 ELEVATION VIEW



MARK: ITEM #59 SECTION VIEW

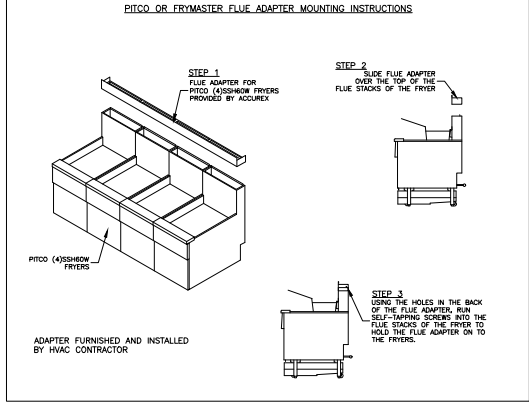
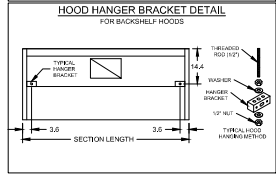


**HOOD HANGING HEIGHT FOR FIRE SYSTEMS**

VERIFICATION OF HOOD HANGING HEIGHT ABOVE FINISHED FLOOR (A.F.F.) IS REQUIRED FOR CORRECT PLACEMENT OF FIRE SYSTEM NOZZLES.

RECOMMENDED HANGING HEIGHT - 8" FROM FINISHED FLOOR TO LOWER FRONT EDGE OF HOOD.

OTHER HANGING HEIGHT - " FROM FINISHED FLOOR TO LOWER EDGE OF HOOD.



**ACCUREX**

PROJECT: 7/11/2024  
 ACCUREX - WI, IA  
 PHILIP KRAFT  
 PHILIP.KRAFT@ACCUREX.COM  
 262-227-7865

MARK: FRYER HOOD, PRV-3 FRYER FAN

CULVERS METRO L 2025 (S)

© 2025  
 WISCONSIN PROFESSIONAL ENGINEER  
 2/20/2025  
 LOWELL J. LARSON  
 8-2388  
 BYRON, WI  
 NEW CULVERS RESTAURANT  
 6123 Truax Lane  
 Eau Claire, WI 54703  
 County of EAU CLAIRE

OWNER:  
 ARNISON REAL ESTATE, LLC  
 200 Aurora Street, Suite 81008  
 Eau Claire, WI 54601  
 Ed. Mena and Kristin Arnison  
 1240 Water Street  
 Prairie du Sac, WI 53278  
 culvers.ca@gmail.com

DATE: 02-25-2025  
 REVISION: M203

**Direct Drive Centrifugal Roof Exhaust Fan**

MARK INFORMATION		FAN INFORMATION					MOTOR INFORMATION						
QTY	MARK	MODEL	VOLUME (CFM)	TOTAL EXTERNAL SP (IN WG)	FAN RPM	OPERATING POWER (HP)	WEIGHT (LB.)	SIZE (HP)	V/C/P	ENCLOSURE	MOTOR RPM	WINDINGS	NEC FLA*
1	PRV-1 Restroom	XRED-090-VG	375	0.5	1,466	0.06	31	0.1	115/60/1	TN	1725	1	NA

\*NEC FLA - Based on table 430.250 or 430.248 of National Electrical Code 2020. Actual motor FLA may vary for sizing thermal overload, consult factory"

**PRV-1 Restroom : SELECTED OPTIONS AND ACCESSORIES**

Standard Curt Cap Size - 17 Square  
 UL/ULI 705 Listed - "Power Ventilators"  
 Switch, NEMA-1, Toggle, Shipped with Unit  
 Damper Shipped Loose, BD-100-PB-10X10, Gravity Operated, Not Coated, Nominal Size  
 Birdscreen, Galvanized, nom. 84% Free Area  
 Composite Wheel Material

**Ceiling Exhaust Fan**

MARK INFORMATION		FAN INFORMATION					MOTOR INFORMATION						
QTY	MARK	MODEL	VOLUME (CFM)	TOTAL EXTERNAL SP (IN WG)	FAN RPM	OPERATING POWER (HP)	WEIGHT (LB.)	SIZE (HP)	V/C/P	ENCLOSURE	MOTOR RPM	WINDINGS	NEC FLA*
2	EF-1A	XCR-B80	75	0.125	881	0.01	10	0	115/60/1	OP	900	1	

**EF-1A : SELECTED OPTIONS AND ACCESSORIES**

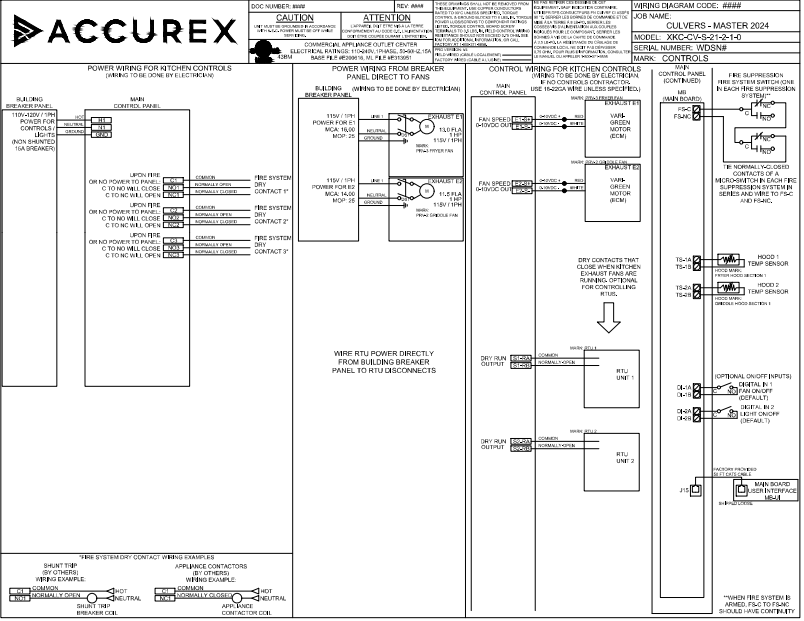
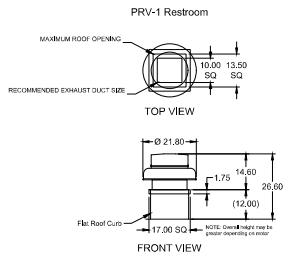
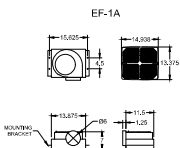
UL/ULI 507 Listed - Electric Fan  
 Solid State Speed Control, 6 Amp, Mounted and Wired Internally  
 Round Hooded Wall Cap, (PN: WC-6) Shipped Loose  
 Round Duct Connection  
 Adjustable easy installation mounting bracket  
 Standard Grille  
 Polypropylene Wheel Material  
 Can Be Used to Comply with: ASHRAE 62.2 and Washington State Energy Code

**CONTROL INFORMATION**

MARK		ELECTRICAL CONTROL PACKAGE			USER INTERFACE	
MARK	MODEL	LOCATION	TYPE	LOCATION		
CONTROLS	XKC-CV-S-22-2-1-0	SHIP LOOSE ENCLOSURE	FULL COLOR TOUCHSCREEN	SHIP LOOSE		

FANS CONTROLLED											
FAN #	TYPE	FAN	ZONE	CFM	MOTOR HP	MOTOR VOLT	CYCLE	MOTOR PHASE	MOTOR STARTER IN PANEL	VFD IN PANEL	
1	SUPPLY	S1	RTU-1	1	1500	1	208	60	3	NO	NO
2	SUPPLY	S2	RTU-2	2	1500	1	208	60	3	NO	NO
3	EXHAUST	E1	PRV-2 GRIDDLE FAN	2	1500	1	115	60	1	NO	NO
4	EXHAUST	E2	PRV-3 FRYER FAN	1	1500	1	115	60	1	NO	NO

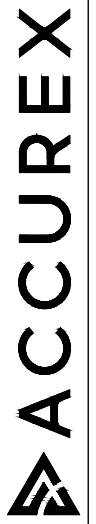
CONTROL FEATURES		SPECIAL DESIGN REQUESTS	
TEMP SENSORS (FACTORY INSTALLED) - QTY. 2		SDR #K2000462 - CULVERS CONTROL PANEL - EXTRA SET OF FIRE CONTACTS - REVISE WIRING DIAGRAMS	
DRY FIRE CONTACTS - QTY. 2			
EXHAUST MAX DURING FIRE			
SUPPLY OFF DURING FIRE			



PROJECT: 7/17/2024  
 ACCUREX - WI, IA  
 PHILLIP KRAFT  
 PHILLIP.KRAFT@ACCUREX.COM  
 262.221.7165

MARK: EF-1A  
 CONDENSATE HOOD  
 PRV-1 RESTROOM FAN  
 CONTROLS

CULVERS METRO L 2025 (S)



© 2025  
 WISCONSIN PROFESSIONAL ENGINEER  
 LOWELL J. LARSON  
 E-3108  
 BYRON, WI  
 2/20/2025

NEW CULVERS RESTAURANT  
 6123 Truax Lane  
 Eau Claire, WI 54703  
 County of EAU CLAIRE

OWNER: ANIMON REAL ESTATE, LLC  
 2000 South  
 Edinboro, WI 54629

OWNER: CULMANN ASSOCIATES ARCHITECTS P.C.  
 800 South  
 Edinboro, WI 54629  
 815-544-7390 Phone  
 (715) 271-9252 or (715) 271-2325  
 © DAA - All rights reserved. Any copying, transmitting or distribution requires the written approval of the author.

FAN SCHEDULE & DETAILS  
 Date: 02-26-2025  
 Revision:

M204