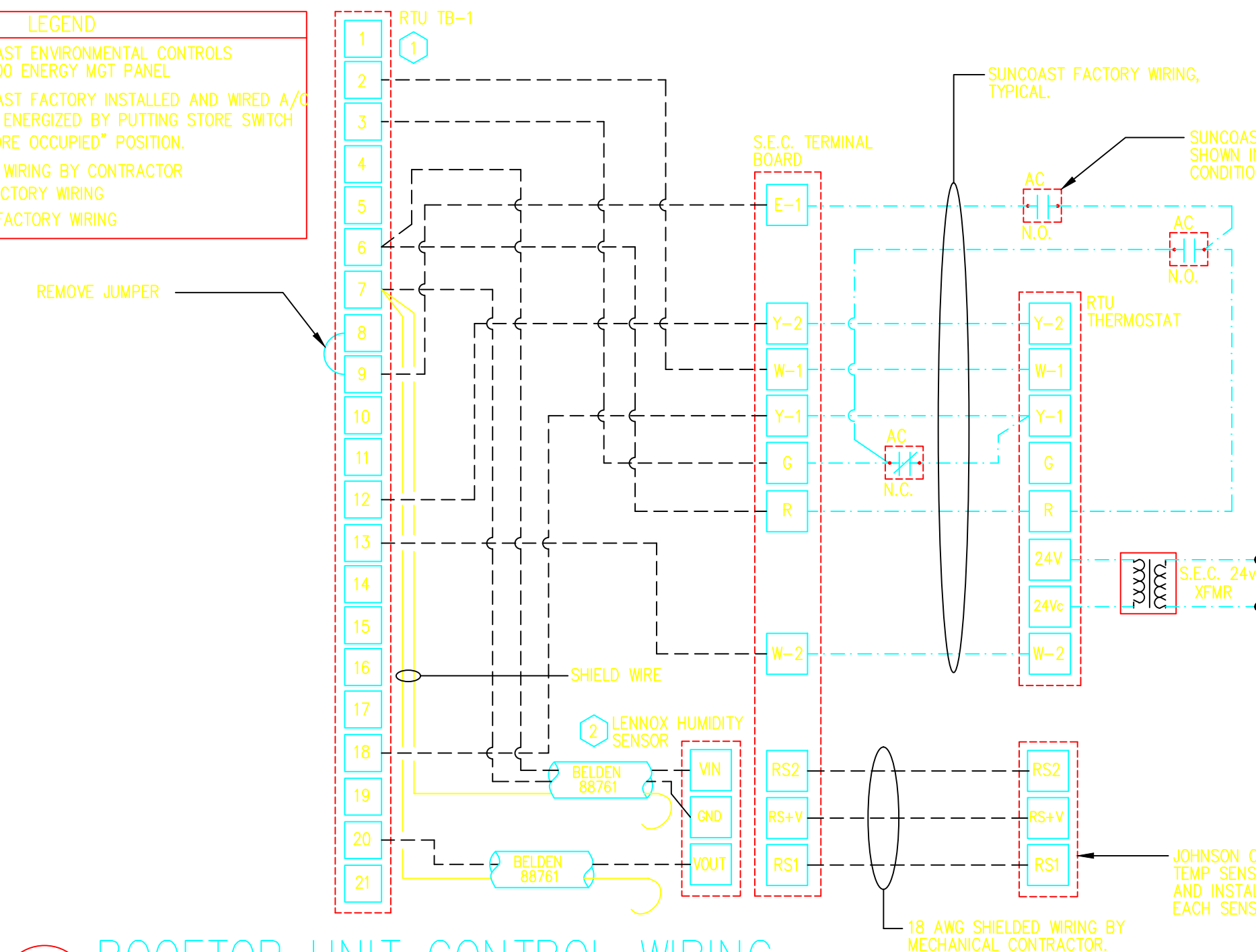


LEGEND			
A-12-400	TYPE - NECK SIZE - CFM	EF#1	EXHAUST FAN #1 (TYP.)
	SPIN-IN FITTING WITH MANUAL BALANCING DAMPER, WITHOUT SCOOP	AC#1	AIR CONDITIONING UNIT #1 (TYP.)
	SPIN-IN		RETURN/EXHAUST (TYP.)
	HARD		SUPPLY DIFFUSER, SQ FACE (TYP.)
	FLEXIBLE		PLAN NOTE REFERENCE
	DIFFUSER		MANUAL VOLUME DAMPER
	REMOTE TEMPERATURE SENSOR		
	HUMIDITY SENSOR		
	SMOKE DETECTOR		
12x18	DUCT SIZE 1ST NUMBER - HORIZONTAL DIMENSION 2ND NUMBER - VERTICAL DIMENSION		DIRECTION OF THROW ON DIFFUSER

KEY NOTES

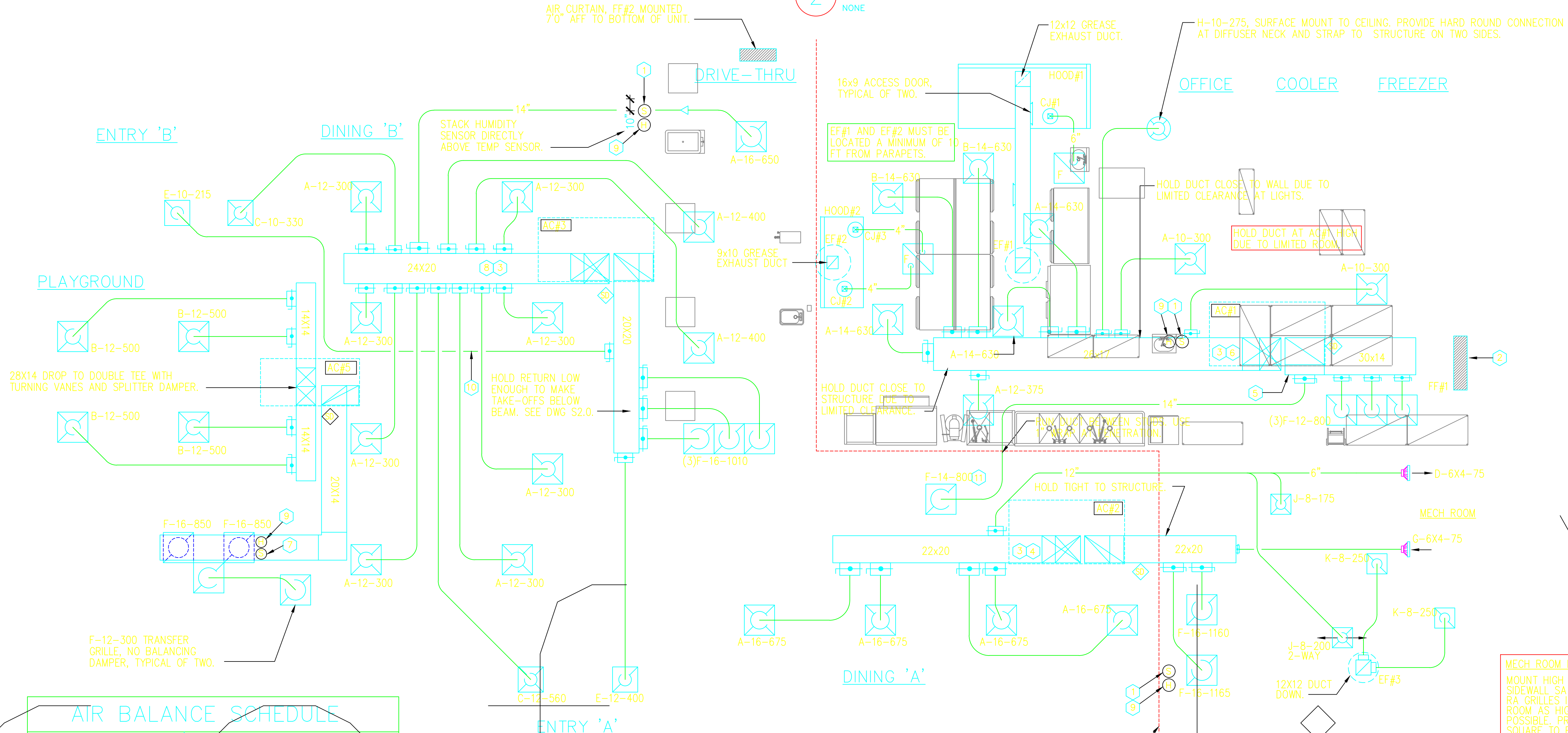
- MOUNT REMOTE SENSOR ON WALL AT 5'-0" AFF AND ROUTE WIRING BACK TO SUNCOAST TEMP CONTROL PANEL.
- AIR CURTAIN MOUNTED OVER DOOR HEADER AT 7'-5" AFF TO BOTTOM OF UNIT. LOCATE PLUNGER TYPE MICROSWITCH IN DOOR FRAME ON STRIKE SIDE.
- BRANCH TAKE-OFFS ARE NOT TO BE LOCATED CLOSER THAN 3'-0" FROM THE ELBOW AT THE SUPPLY AIR DROP FROM CURB.
- TRANSITION IN VERTICAL DROP FROM FULL SIZE OF CURB OPENING TO 22x20. PROVIDE TURNING VANES IN ELBOW.
- MAKE VERTICAL DROP FULL SIZE OF CURB OPENING INTO TOP OF RETURN PLENUM.
- HOLD DUCT CLOSE TO WALL AT HAND SINK TO PROVIDE MAXIMUM CLEARANCE DUE TO LIGHT FIXTURES. TRANSITION IN VERTICAL DROP FROM FULL SIZE OF CURB OPENING TO 26x17. PROVIDE TURNING VANES IN ELBOW.
- MOUNT REMOTE SENSOR FOR PLAYGROUND ABOVE DOOR FRAME NEAR THE RETURN AIR GRILLES. ROUTE WIRING BACK TO SUNCOAST TEMP CONTROL PANEL.
- TRANSITION IN VERTICAL DROP FROM FULL SIZE OF CURB OPENING TO 24x20. PROVIDE TURNING VANES IN ELBOW.
- MOUNT LENNOX HUMIDITY SENSOR ON WALL AT 5'-0" AFF AND ROUTE WIRING TO UNIT ON ROOF.
- ROUTE DUCT UP IN TRUSS JOIST SPACE.
- INSULATION ON DUCT DROP THROUGH UPPER CEILING TO STOP AT UPPER CEILING PENETRATION. SAND/DEGREASE GALVANIZED SHEET METAL AND PAINT FLAT WHITE. CEILING TILE AT UPPER CEILING TO BE CUT TO FIT AROUND DUCT DROP.

LEGEND	
S.E.C.	SUNCOAST ENVIRONMENTAL CONTROLS QFA-500 ENERGY MGT PANEL
AC	SUNCOAST FACTORY INSTALLED AND WIRED A/C RELAY, ENERGIZED BY PUTTING STORE SWITCH IN "STORE OCCUPIED" POSITION.
- - -	18 GA. WIRING BY CONTRACTOR
- - -	RTU FACTORY WIRING
- - -	S.E.C. FACTORY WIRING



- NOTES:**
- EXCEPT AT AC#1, CHANGE MC BOARD ECTO PARAMETER 3.01 (2.01 FOR LCA UNITS) FROM THE DEFAULT SETTING TO ZERO. THIS WILL CAUSE THE O.A. DAMPER TO OPEN ON "OCCUPIED" START. THE O.A. DAMPER AT AC#1 WILL REMAIN CLOSED FOR THE FIRST 60 MINUTES AFTER "OCCUPIED" START.
 - MECHANICAL CONTRACTOR SHALL MAKE PLASTIC LAMINATE OF THIS DETAIL AND INSTALL PERMANENTLY ON INSIDE DOOR OF ROOFTOP UNIT CONTROL COMPARTMENT.
 - SEE DETAIL 5/A3 FOR SMOKE DETECTOR AND ANNUNCIATOR WIRING.
 - HUMIDITROL ECTO PARAMETERS TO BE FIELD SET AS FOLLOWS:
ECTO 4.24 VALUE SET TO 7
ECTO 4.25 VALUE SET TO 55%
- KEYED NOTES:**
- 18 AWG WIRING TO RTU TO BE ROUTED TO UNIT THRU FACTORY WIREWAY.
 - WIRING TO HUMIDITY SENSOR TO BE MADE WITH TWO SEPARATE RUNS OF SHIELDED PAIR. TERMINATE SHIELD WIRES AT TB-7, LEAVE OPEN AT SENSOR.

2 ROOFTOP UNIT CONTROL WIRING



AIR BALANCE SCHEDULE	
AIR TYPE	TOTAL CFM
SUPPLY	14,550
RETURN	10,945
EXHAUST	2,950
OUTSIDE AIR	3,605
BUILDING POSITIVE PRESSURE	655

1 MECHANICAL FLOOR PLAN

1/4"=1'-0"

- SHEET NOTES**
- DUCT SIZES SERVING DIFFUSERS AND GRILLES ARE SAME SIZE AS DIFFUSER OR GRILLE NECK UNLESS NOTED OTHERWISE.

- MECH ROOM NOTES:**
- MOUNT HIGH SIDEWALL SA AND RA GRILLES IN MECH ROOM AS HIGH AS POSSIBLE. PROVIDE SQUARE TO ROUND BOOTS. COORDINATE DUCT WITH PLUMBING.