



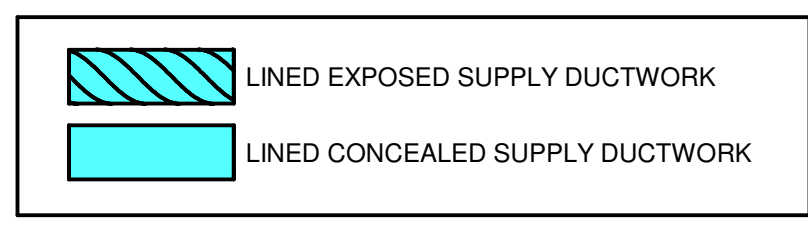




OWNERSHIP OF INSTRUMENTS OF SERVICE: MSA DESIGN, INC. and its consultants shall retain ownership of all reports, plans, specifications, computer files, and other documents and instruments prepared by the Consultant as instruments of service. All reports, plans, specifications, computer files, and other documents and instruments prepared by the Consultant as instruments of service shall remain the property of MSA DESIGN, INC. and shall not be used, reproduced, or copied in whole or in part, for any purpose without the written authorization of MSA DESIGN, INC. Copyright MSA DESIGN, INC. MSA DESIGN and MSA DESIGN are registered trademarks of MSA DESIGN, INC. MSA DESIGN is a division of MSA DESIGN, INC.

2/29/2024 11:07:55 AM 25019.01-22-MEP-Green Township - Police Station - detached.rvt

KEYED NOTES

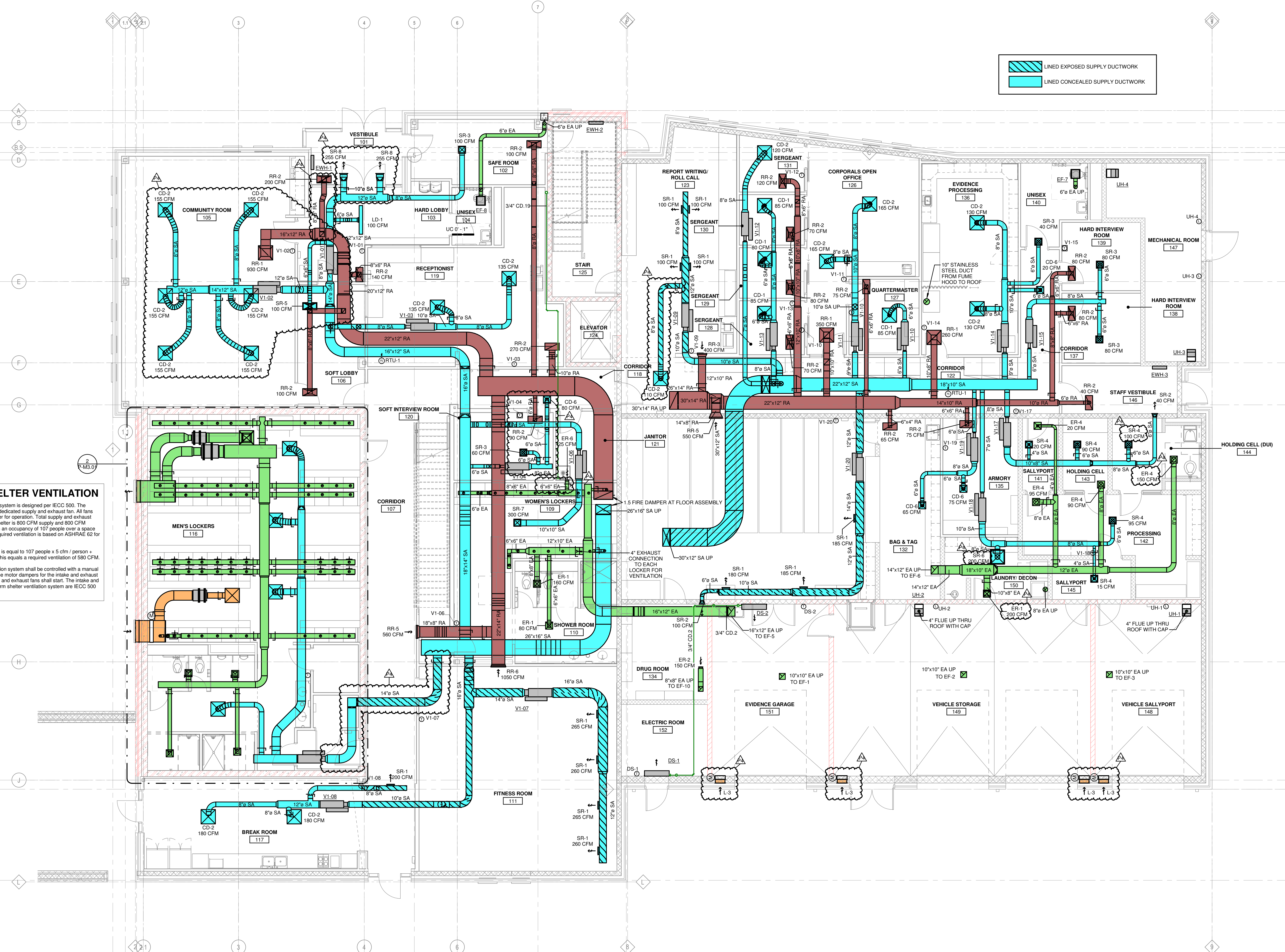


**STORM SHELTER VENTILATION**

The storm shelter HVAC system is designed per IECC 500. The means of ventilation is a dedicated supply and exhaust fan. All fans are powered by an inverter for operation. Total supply and exhaust ventilation to the storm shelter is 800 CFM supply and 800 CFM exhaust. This is based on an occupancy of 107 people over a space area of 742 sq.ft. The required ventilation is based on ASHRAE 62 for similar occupancy.

The calculated ventilation is equal to 107 people x 5 cfm / person + 742 sq.ft. x 0.06 cfm/sf. This equals a required ventilation of 590 CFM.

The storm shelter ventilation system shall be controlled with a manual switch. Upon activation the motor dampers for the intake and exhaust shall open and the supply and exhaust fans shall start. The intake and exhaust louvers for the storm shelter ventilation system are IECC 500 rated.



MECHANICAL PLAN - LEVEL 1

3/16" = 1'-0"

2" REFERENCE LINE  
KLH PROJECT #: 25019.01  
CES RAL

**MSA DESIGN**

CINCINNATI | COLUMBUS | ORLANDO

www.msa.com | 855.241.2666

---

**KLH ENGINEERS**

KOHR'S LONNEMANN HILL ENGINEERS, INC.  
MECHANICAL/ELECTRICAL ENGINEERS  
WWW.KLHENGINEERS.COM

1538 ALEXANDRIA PIKE, SUITE 111  
FT. THOMAS, KENTUCKY 41075  
800.364.0763  
859.442.8050  
859.442.8058 FAX

LEXINGTON, KENTUCKY  
LOUISVILLE, KENTUCKY  
COLUMBUS, OHIO

**POLICE DEPARTMENT**  
**GREEN TOWNSHIP**  
6200 Harrison Avenue  
Cincinnati, Ohio 45247

This drawing and the design concepts represented, as instruments of service, are the sole property of MSA DESIGN, INC. and may not be used, reproduced, or copied in whole or in part, for any purpose without the written authorization of MSA DESIGN, INC. Copyright MSA DESIGN, INC. MSA DESIGN and MSA DESIGN are registered trademarks of MSA DESIGN, INC. MSA DESIGN is a division of MSA DESIGN, INC.

| NO. | DATE       | ISSUED / REVISION |
|-----|------------|-------------------|
|     | 09/22/2023 | DO SET            |
|     | 12/13/2023 | 90% SET           |
| P1  | 01/04/2024 | ADDENDUM P1       |
| P2  | 01/09/2024 | ADDENDUM P2       |
| P3  | 02/28/2024 | PERMIT REV        |
| P4  | 02/29/2024 | BULLETIN P1       |

PROJECT NO. 23103.00  
DRAWING TITLE:  
MECHANICAL  
DUCTWORK PLAN -  
FIRST FLOOR

**P-M2.01**



OWNERSHIP OF INSTRUMENTS OF SERVICE  
 All reports, plans, specifications, computer files, and other documents and instruments prepared by the Consultant as instruments of service, shall remain the property of the Consultant. The Consultant shall retain the right to use, modify, reproduce, or otherwise use any or all of the information contained herein for any purpose without the written authorization of MSA DESIGN.

1/9/2024 11:10:11 AM Autodesk Docs/23103.00 - Green Twp - PD/2019.01-22-MEP-Green Township - Police Station.rvt

KEYED NOTES

**MSA DESIGN**  
 CINCINNATI | COLUMBUS | ORLANDO  
 msa.com | 855.241.2666

**PRELIMINARY**  
 NOT FOR CONSTRUCTION

**KLH ENGINEERS**  
 KOHRS LONNEMANN HELL ENGINEERS, INC.  
 MECHANICAL/ELECTRICAL ENGINEERS  
 WWW.KLHENGINEERS.COM  
 1538 ALEXANDRIA PIKE, SUITE 11  
 FT. THOMAS, KENTUCKY 41075  
 800.264.0763  
 859.442.8050  
 859.442.8058 FAX  
 LEXINGTON, KENTUCKY  
 LOUISVILLE, KENTUCKY  
 COLUMBUS, OHIO

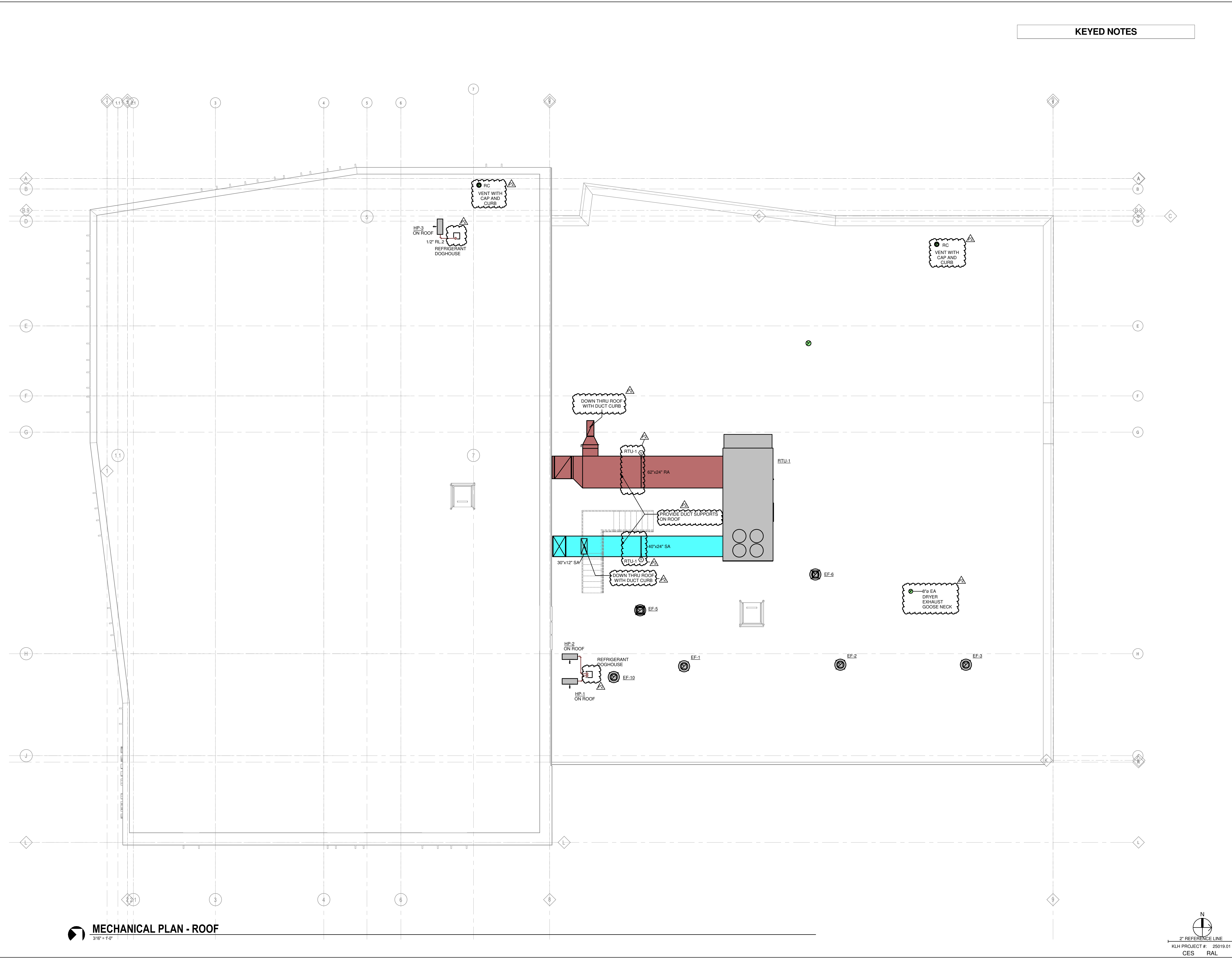
**POLICE DEPARTMENT**  
**GREEN TOWNSHIP**  
 Harrison Road  
 Cincinnati, Ohio 45247

This drawing and the design concepts represented, as instruments of service, are the sole property of MSA DESIGN, and may not be used, reproduced, or copied in whole or part, for any purpose without the written authorization of MSA DESIGN.  
 Copyright MSA DESIGN  
 MSA DESIGN All Rights Reserved  
 MSA SPORT is a division of MSA DESIGN

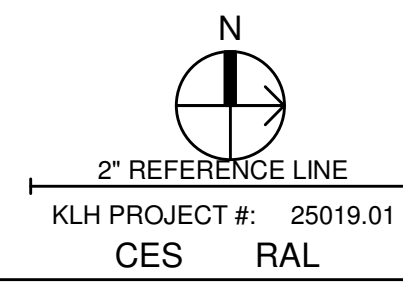
| NO. | DATE       | ISSUED / REVISION |
|-----|------------|-------------------|
|     | 09/22/2023 | DO SET            |
|     | 10/17/2023 | EQUIPMENT PKG     |
|     | 12/13/2023 | 90% SET           |
| P1  | 01/04/2024 | ADDENDUM P1       |
| P2  | 01/09/2024 | ADDENDUM P2       |

PROJECT NO. 23103.00  
 DRAWING TITLE:  
**MECHANICAL DUCTWORK PLAN - ROOF**

**P-M2.03**

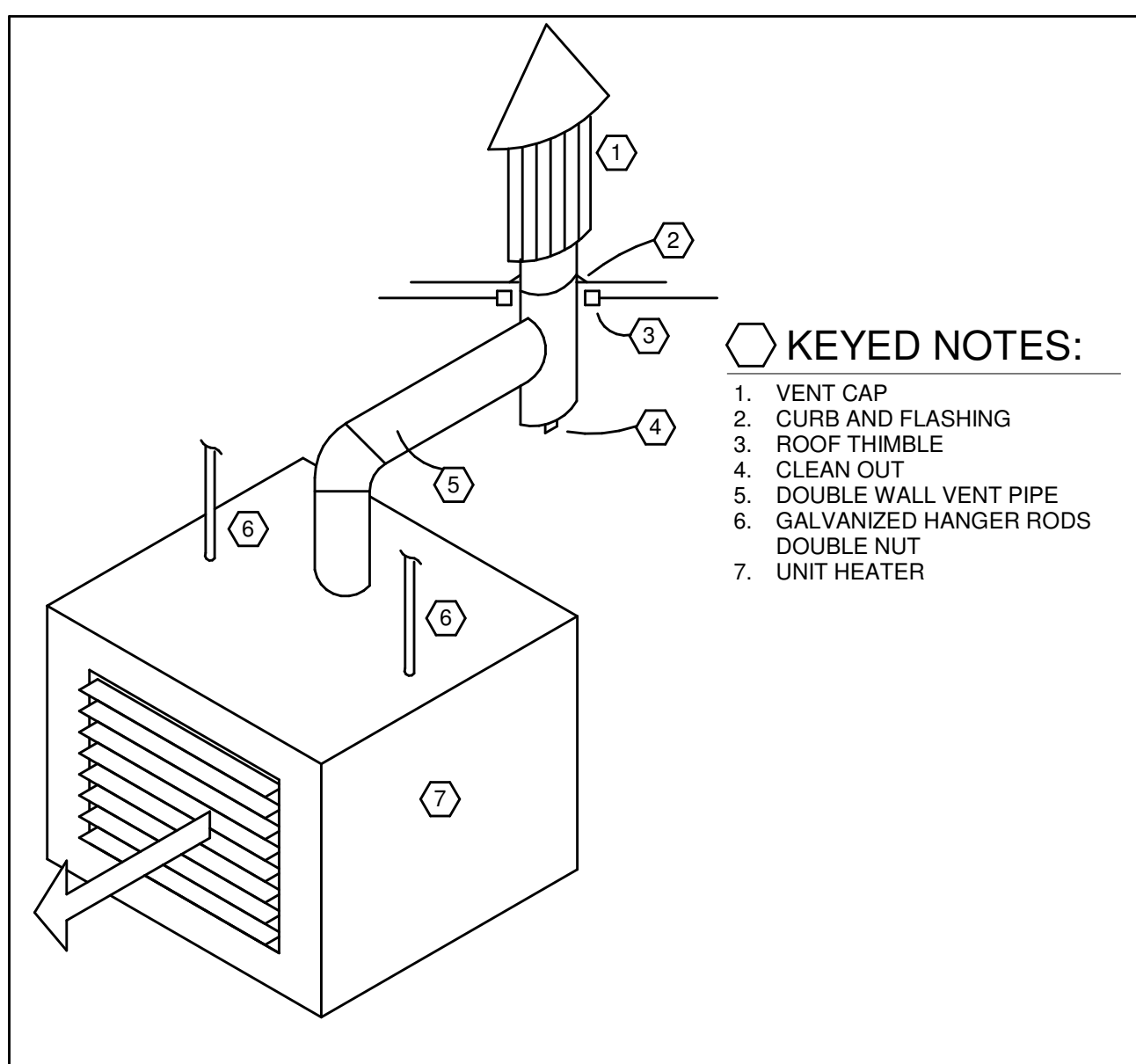


**MECHANICAL PLAN - ROOF**  
 3/16" = 1'-0"



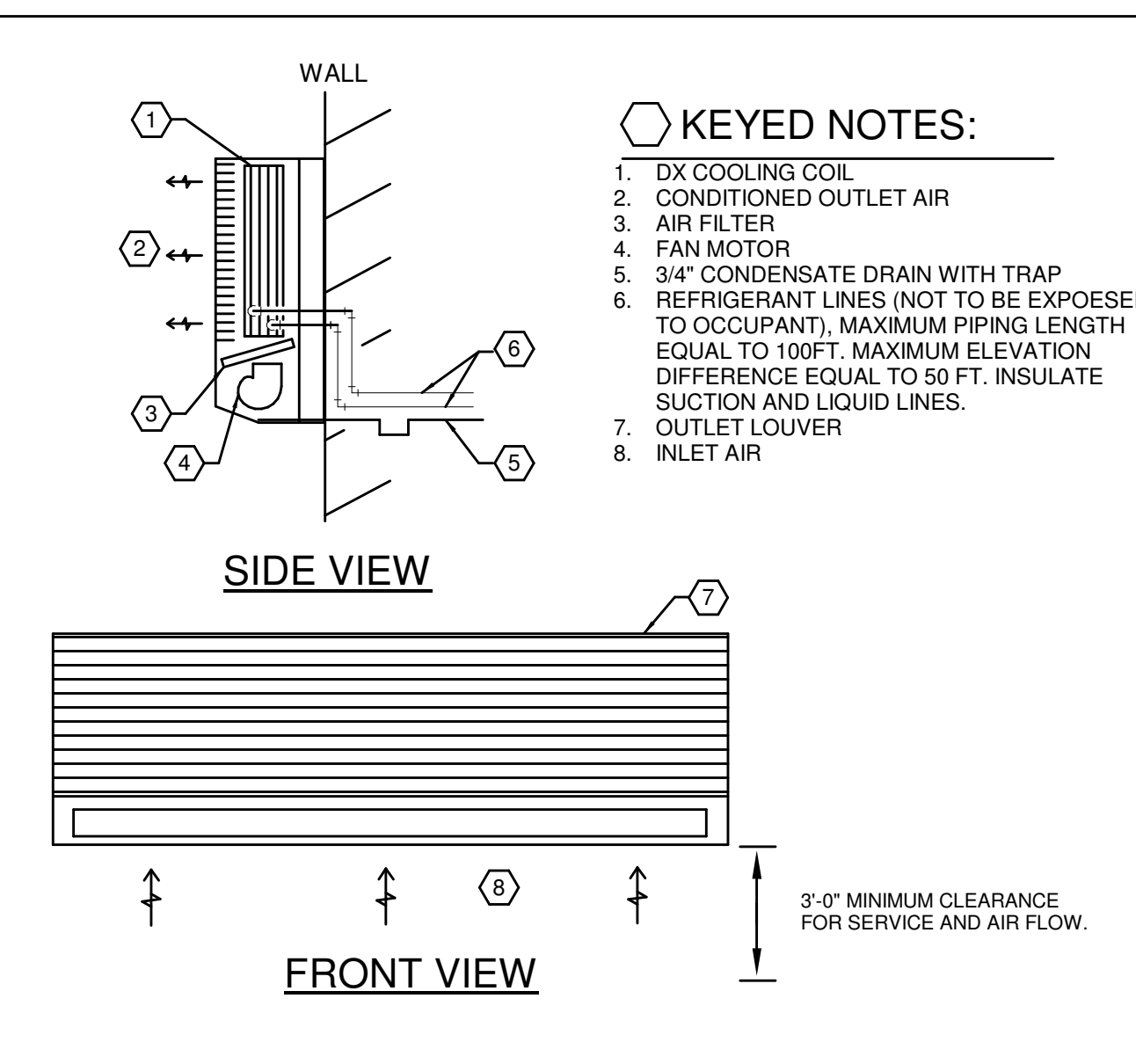


OWNERSHIP OF INSTRUMENTS OF SERVICE: MSA DESIGN, Inc. and its affiliates own and retain all rights in and to the design, drawings, specifications, computer files, and all other documents and instruments prepared by the Consultant as instruments of service, in whole or in part, for the Consultant and its affiliates, successors, assigns, and other persons or entities, including, without limitation, the copyright therein.



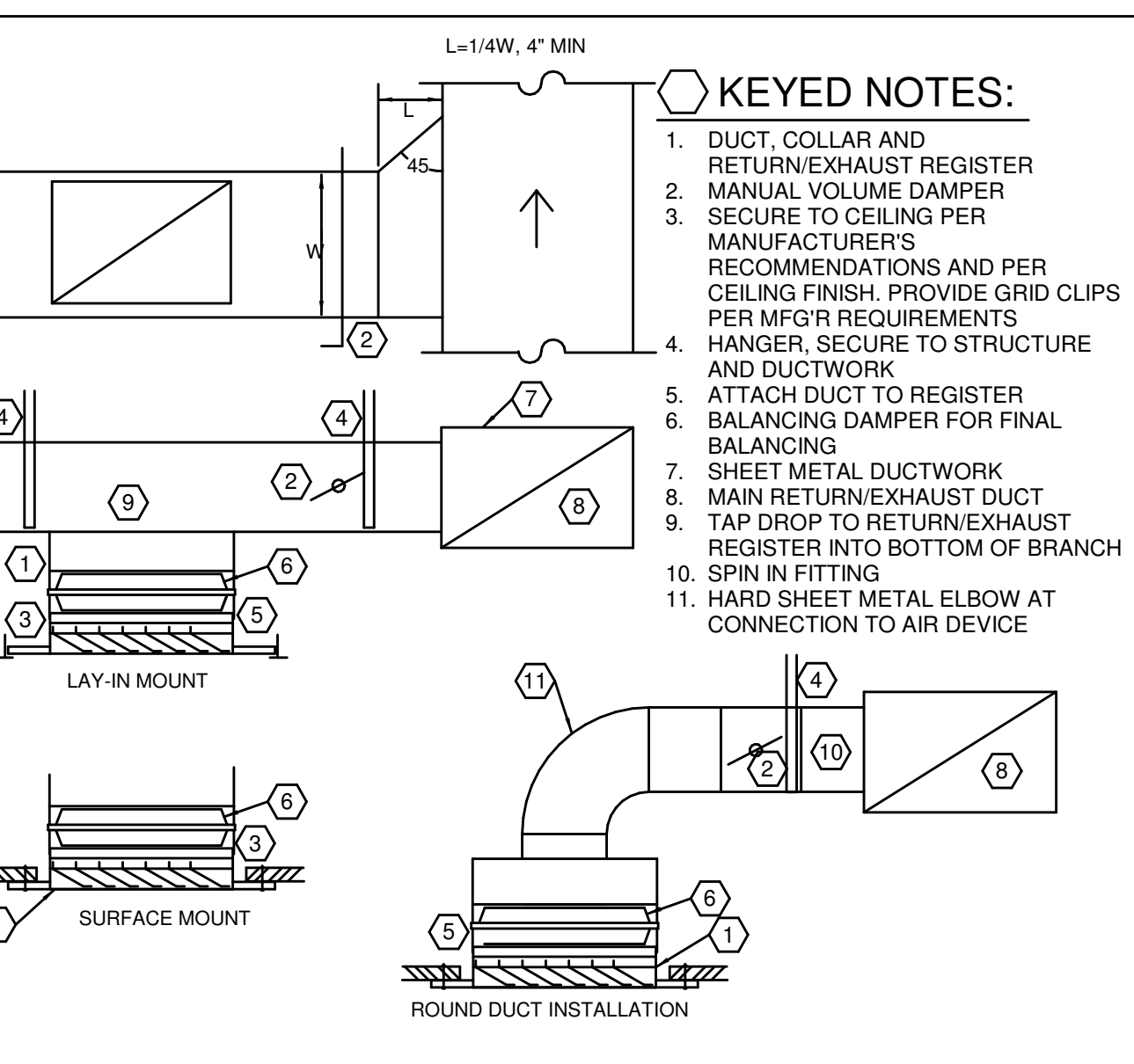
- KEYED NOTES:**
1. VENT CAP
  2. CURB AND FLASHING
  3. ROOF THIMBLE
  4. CLEAN OUT
  5. DOUBLE WALL VENT PIPE
  6. GALVANIZED HANGER RODS
  7. UNIT HEATER

235533.00-01 - GAS FIRED UNIT HEATER TO VENT CAP  
SCALE: NONE



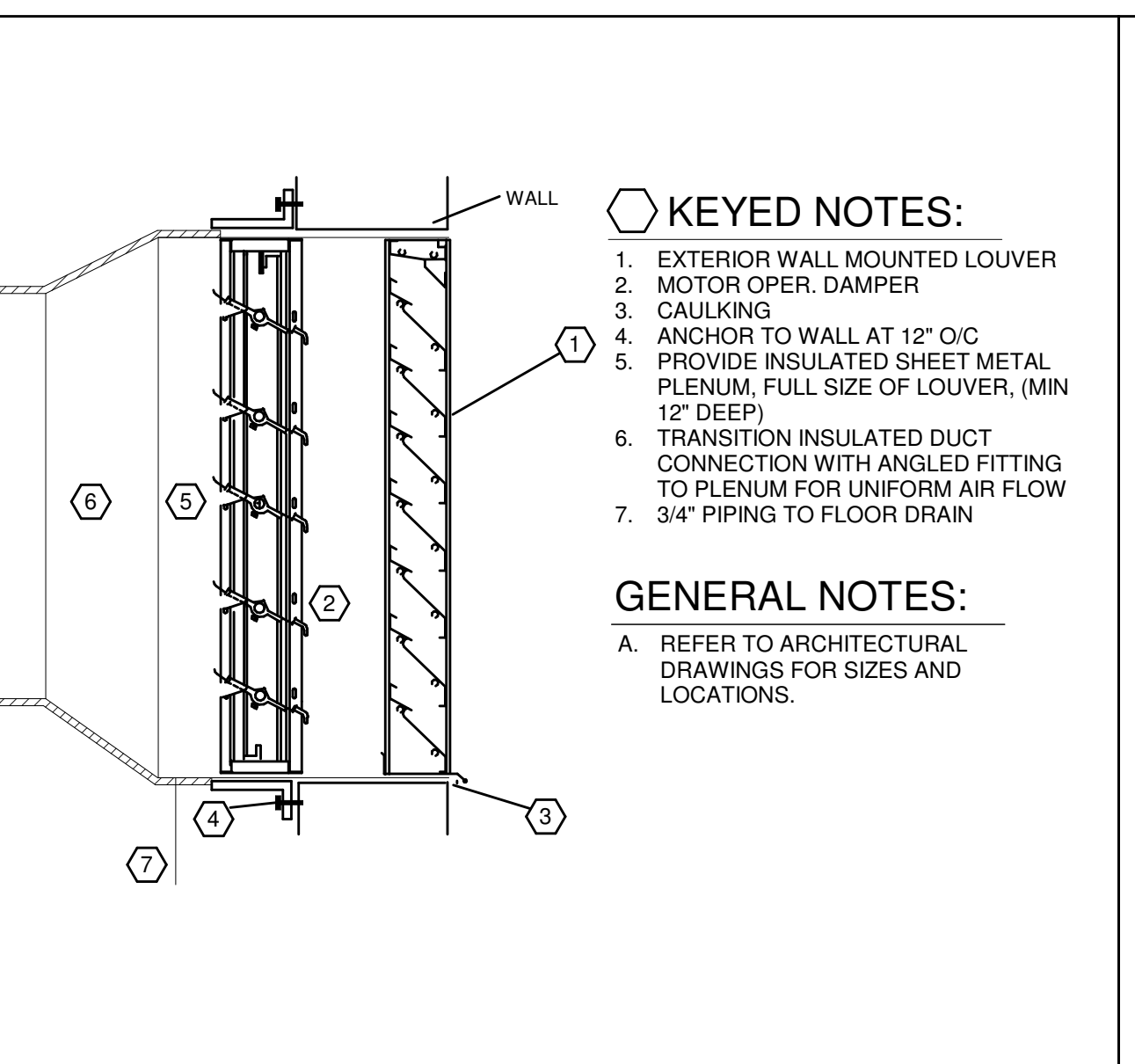
- KEYED NOTES:**
1. DIX COOLING COIL
  2. CONDITIONED OUTLET AIR
  3. AIR FILTER
  4. FAN MOTOR
  5. 3/4" CONDENSATE DRAIN WITH TRAP
  6. REFRIGERANT LINES (NOT TO BE EXPOSED TO OCCUPANT), MAXIMUM PIPING LENGTH EQUAL TO 100FT. MAXIMUM ELEVATION DIFFERENCE EQUAL TO 50 FT. INSULATE SUCTION AND LIQUID LINES.
  7. OUTLET LOUVER
  8. INLET AIR

238126.00-06 - DUCTLESS AIR CONDITION UNIT WALL  
SCALE: NONE



- KEYED NOTES:**
1. DUCT COLLAR AND RETURN/EXHAUST REGISTER
  2. MANUAL VOLUME DAMPER
  3. SECURE TO CEILING PER MANUFACTURER'S RECOMMENDATIONS AND PER CEILING FINISH
  4. PROVIDE GRID CLIPS PER MFG'S RECOMMENDATIONS AND PER CEILING FINISH
  5. ATTACH DUCT TO REGISTER AND DUCTWORK
  6. BALANCING DAMPER FOR FINAL BALANCING
  7. SHEET METAL DUCTWORK
  8. MAIN RETURN/EXHAUST DUCT
  9. TAP DROP TO RETURN/EXHAUST REGISTER INTO BOTTOM OF BRANCH
  10. SPIN IN FITTING
  11. HARD SHEET METAL ELBOW AT CONNECTION TO AIR DEVICE

233713.00-21 - RETURN/EXHAUST REGISTER INSTALLATION  
SCALE: NONE

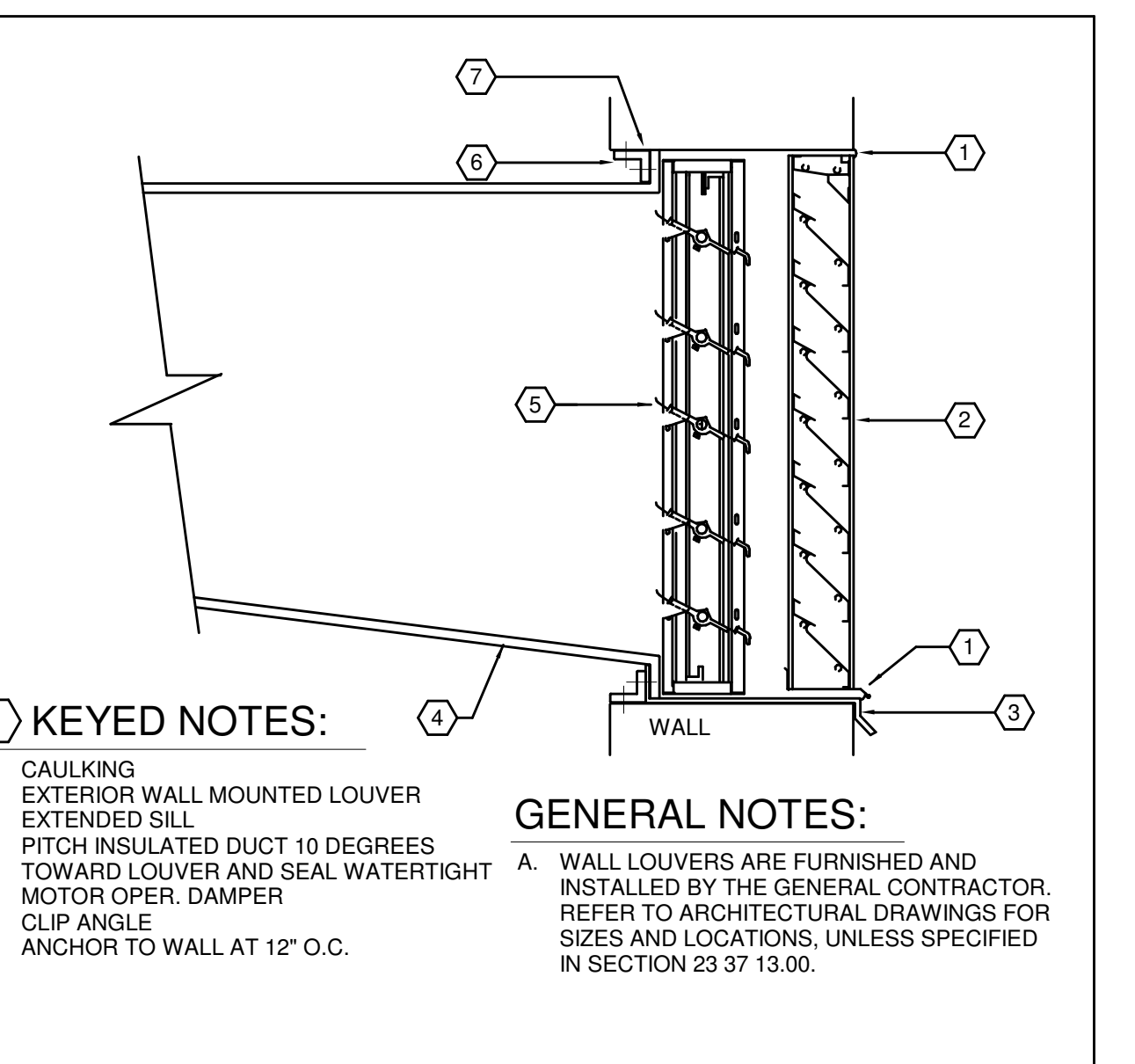


- KEYED NOTES:**
1. EXTERIOR WALL MOUNTED LOUVER
  2. MOTOR OPER. DAMPER
  3. CAULKING
  4. ANCHOR TO WALL AT 12" O.C
  5. PROVIDE INSULATED SHEET METAL PLENUM, FULL SIZE OF LOUVER, (MIN 12" DEEP)
  6. TRANSITION INSULATED DUCT CONNECTION WITH ANGLED FITTING TO PLENUM FOR UNIFORM AIR FLOW
  7. 3/4" PIPING TO FLOOR DRAIN

**GENERAL NOTES:**

A. REFER TO ARCHITECTURAL DRAWINGS FOR SIZES AND LOCATIONS.

233713.00-11 - INTAKE LOUVER  
SCALE: NONE

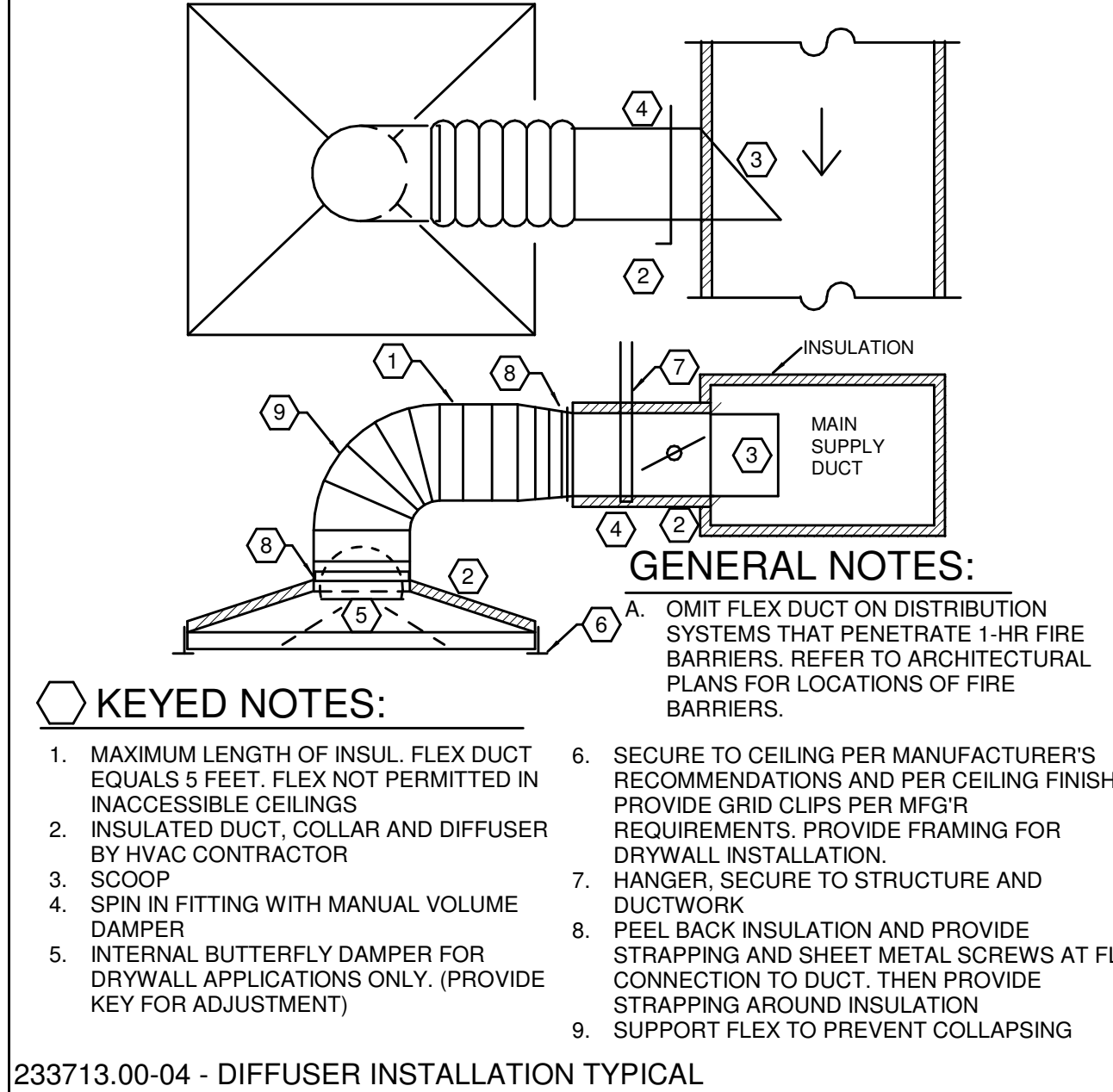


- KEYED NOTES:**
1. CAULKING
  2. EXTERIOR WALL MOUNTED LOUVER
  3. EXTENDED SILL
  4. PITCH INSULATED DUCT 10 DEGREES TOWARD LOUVER AND SEAL WATERTIGHT
  5. MOTOR OPER. DAMPER
  6. CLIP ANGLE
  7. ANCHOR TO WALL AT 12" O.C.

**GENERAL NOTES:**

A. WALL LOUVERS ARE FURNISHED AND INSTALLED BY THE GENERAL CONTRACTOR. REFER TO ARCHITECTURAL DRAWINGS FOR SIZES AND LOCATIONS, UNLESS SPECIFIED IN SECTION 23 37 13.00.

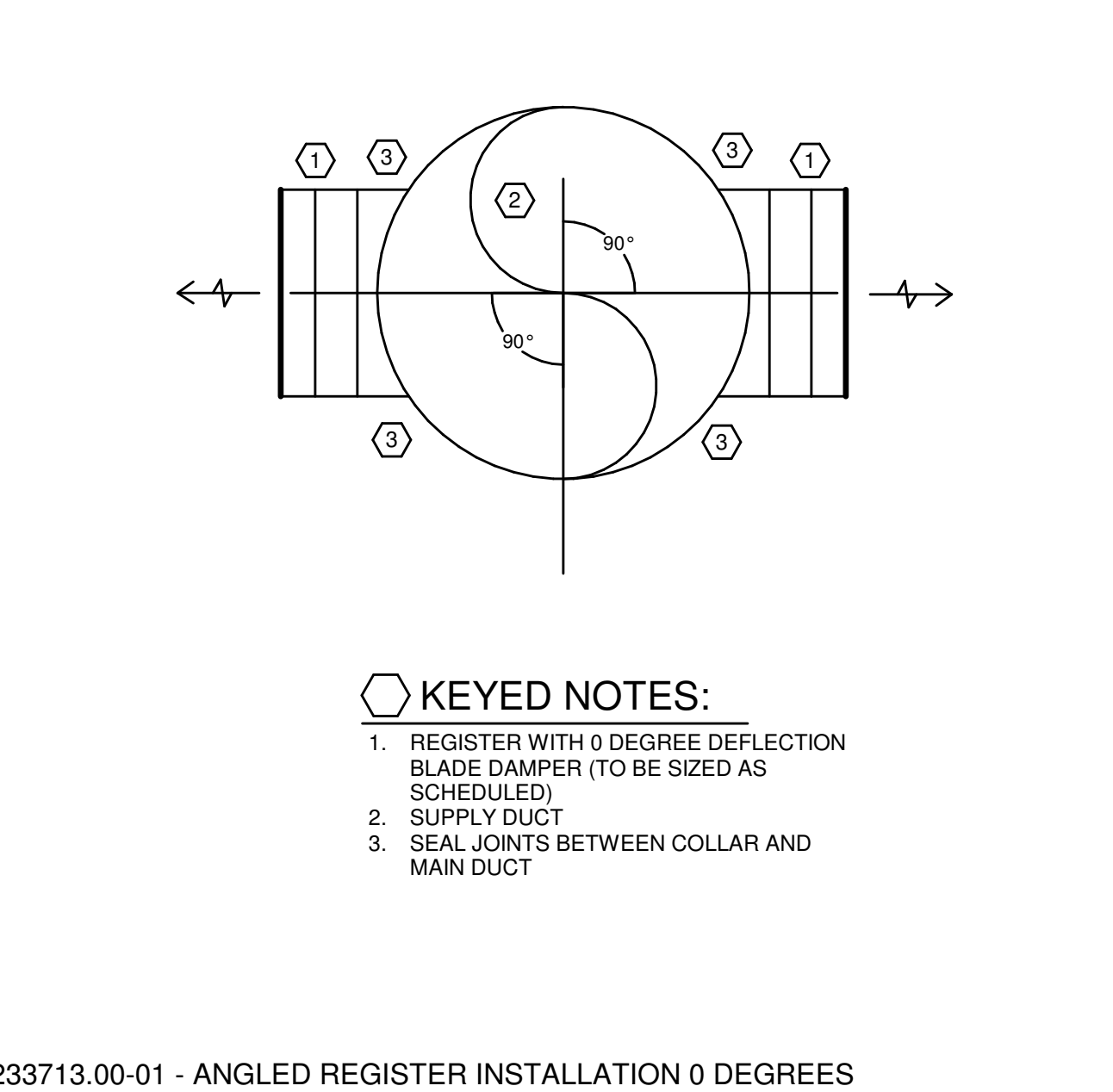
233713.00-07 - EXHAUST LOUVER DETAIL  
SCALE: NONE



- GENERAL NOTES:**
- A. OMIT FLEX DUCT ON DISTRIBUTION SYSTEMS THAT PENETRATE 1-HR FIRE BARRIERS. REFER TO ARCHITECTURAL PLANS FOR LOCATIONS OF FIRE BARRIERS.

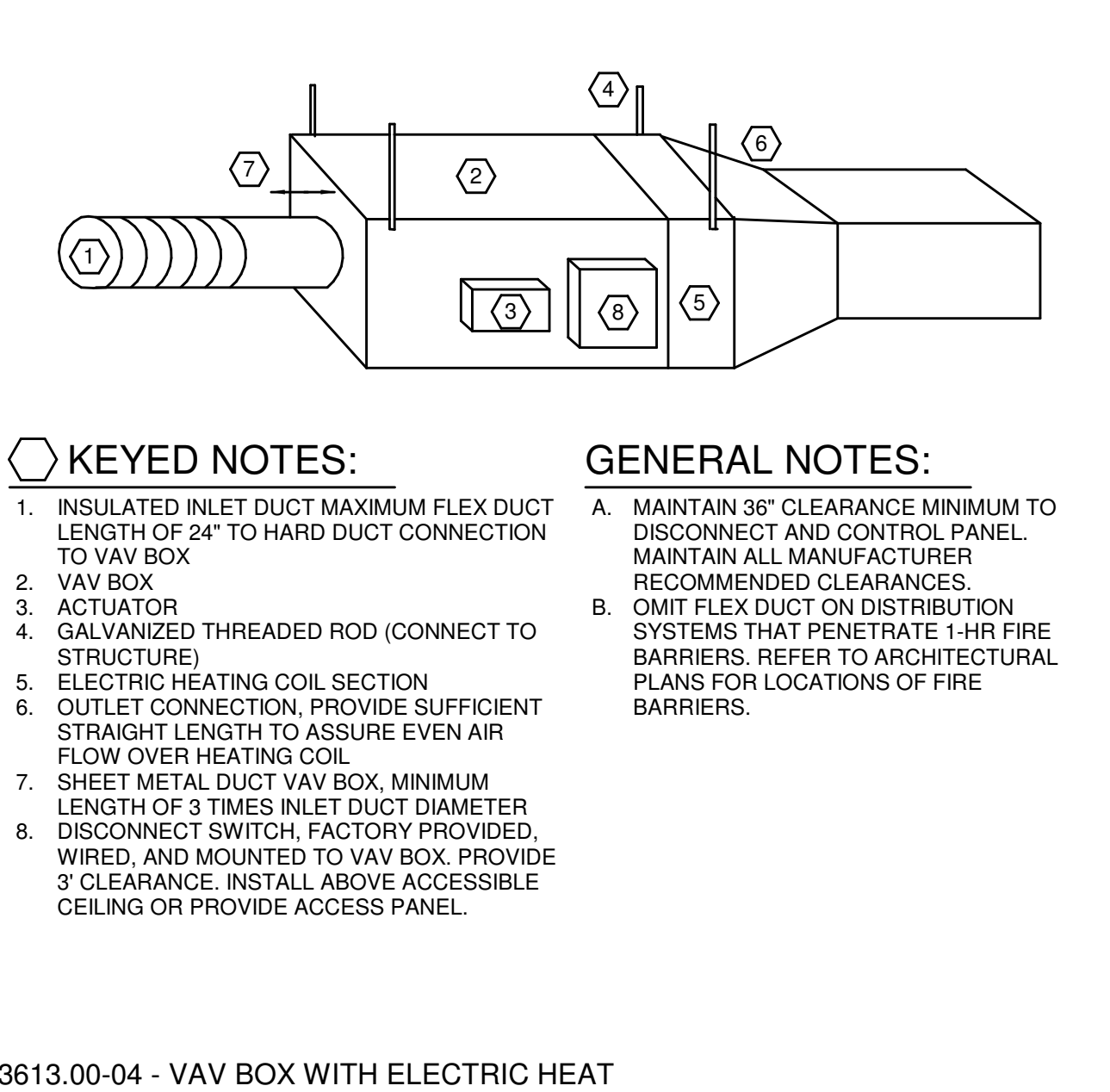
- KEYED NOTES:**
1. MAXIMUM LENGTH OF INSUL. FLEX DUCT EQUALS 5 FEET. FLEX NOT PERMITTED IN INACCESSIBLE CEILINGS
  2. INSULATED DUCT COLLAR AND DIFFUSER BY HVAC CONTRACTOR
  3. SCOOP
  4. SPIN IN FITTING WITH MANUAL VOLUME DAMPER
  5. INTERNAL BUTTERFLY DAMPER FOR DRYWALL APPLICATIONS ONLY. (PROVIDE KEY FOR ADJUSTMENT)
  6. SECURE TO CEILING PER MANUFACTURER'S RECOMMENDATIONS AND PER CEILING FINISH. PROVIDE GRID CLIPS PER MFG'S REQUIREMENTS. PROVIDE FRAMING FOR DRYWALL INSTALLATION.
  7. HANGER, SECURE TO STRUCTURE AND DUCTWORK
  8. PEEL BACK INSULATION AND PROVIDE STRAPPING AND SHEET METAL SCREWS AT FLEX CONNECTION TO DUCT. THEN PROVIDE STRAPPING AROUND INSULATION
  9. SUPPORT FLEX TO PREVENT COLLAPSING

233713.00-04 - DIFFUSER INSTALLATION TYPICAL  
SCALE: NONE



- KEYED NOTES:**
1. REGISTER WITH 0 DEGREE DEFLECTION BLADE DAMPER (TO BE SIZED AS SCHEDULED)
  2. SUPPLY DUCT
  3. SEAL JOINTS BETWEEN COLLAR AND MAIN DUCT

233713.00-01 - ANGLED REGISTER INSTALLATION 0 DEGREES  
SCALE: NONE



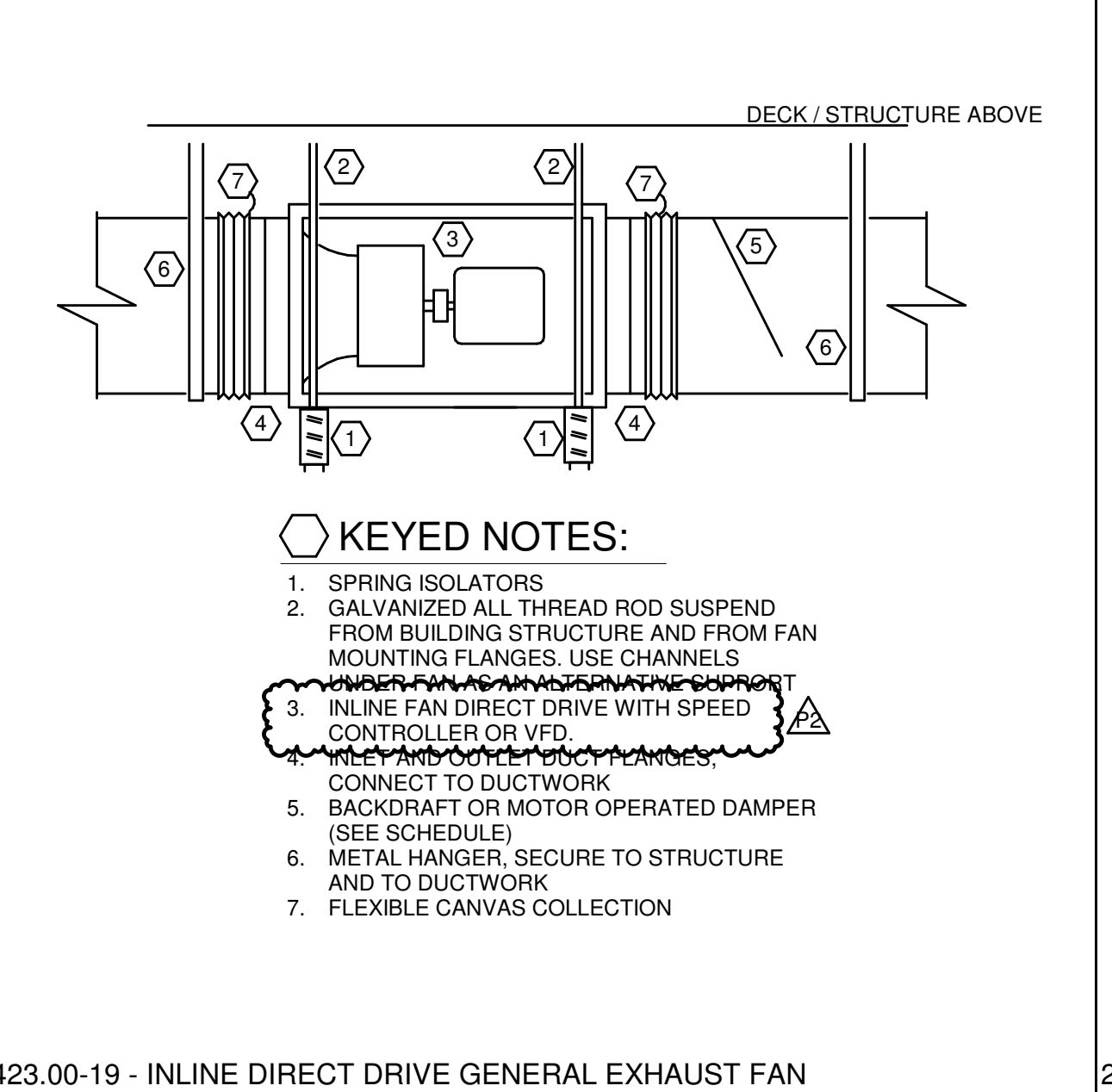
- KEYED NOTES:**
1. INSULATED INLET DUCT MAXIMUM FLEX DUCT LENGTH OF 24' TO HARD DUCT CONNECTION TO VAV BOX
  2. VAV BOX
  3. ACTUATOR
  4. GALVANIZED THREADED ROD (CONNECT TO STRUCTURE)
  5. ELECTRIC HEATING COIL SECTION
  6. OUTLET CONNECTION. PROVIDE SUFFICIENT STRAIGHT LENGTH TO ASSURE EVEN AIR FLOW OVER HEATING COIL
  7. SHEET METAL DUCT VAV BOX. MINIMUM LENGTH OF 3 TIMES INLET DUCT DIAMETER
  8. DISCONNECT SWITCH, FACTORY PROVIDED. WIRED, AND MOUNTED TO VAV BOX. PROVIDE 3" CLEARANCE. INSTALL ABOVE ACCESSIBLE CEILING OR PROVIDE ACCESS PANEL.

**GENERAL NOTES:**

A. MAINTAIN 36" CLEARANCE MINIMUM TO DISCONNECT AND CONTROL PANEL. MAINTAIN ALL MANUFACTURER'S RECOMMENDED CLEARANCES.

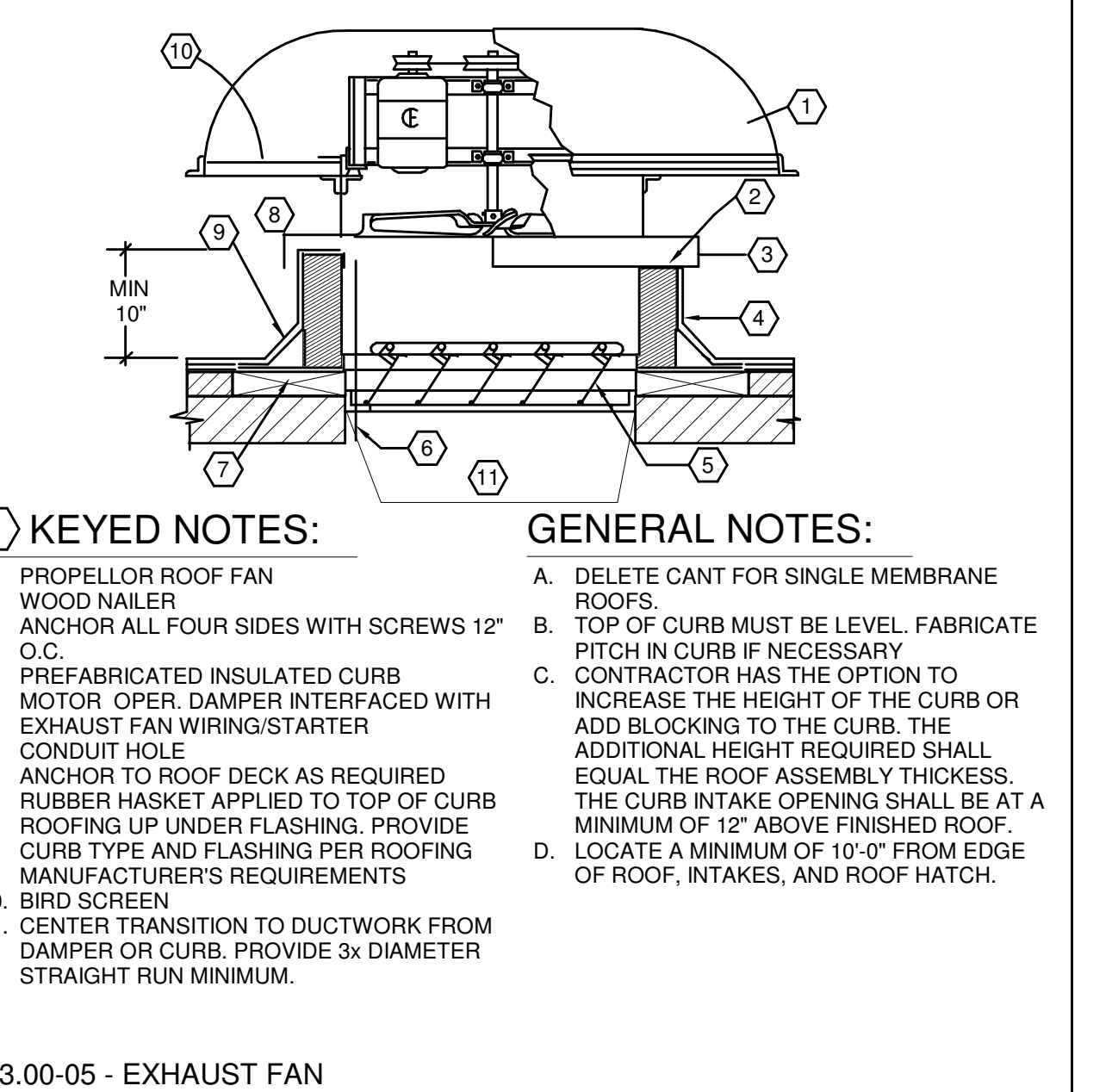
B. OMIT FLEX DUCT ON DISTRIBUTION SYSTEMS THAT PENETRATE 1-HR FIRE BARRIERS. REFER TO ARCHITECTURAL PLANS FOR LOCATIONS OF FIRE BARRIERS.

233613.00-04 - VAV BOX WITH ELECTRIC HEAT  
SCALE: NONE



- KEYED NOTES:**
1. SPRING ISOLATORS
  2. GALVANIZED ALL THREAD ROD SUSPEND FROM BUILDING STRUCTURE AND FROM FAN MOUNTING FLANGES. USE CHANNELS
  3. INLINE FAN DIRECT DRIVE WITH SPEED CONTROLLER OR VFD
  4. CONNECT TO DUCTWORK
  5. BACKDRAFT OR MOTOR OPERATED DAMPER (SEE SCHEDULE)
  6. METAL HANGER, SECURE TO STRUCTURE AND TO DUCTWORK
  7. FLEXIBLE CANVAS COLLECTION

233423.00-19 - IN-LINE DIRECT DRIVE GENERAL EXHAUST FAN  
SCALE: NONE



- KEYED NOTES:**
1. PROPELLOR ROOF FAN
  2. WOOD NAILED
  3. ANCHOR ALL FOUR SIDES WITH SCREWS 12" O.C.
  4. PREFABRICATED INSULATED CURB
  5. MOTOR OPER. DAMPER INTERFACED WITH EXHAUST FAN WIRING/STARTER
  6. CONDUIT HOLE
  7. ANCHOR TO ROOF OF DECK AS REQUIRED
  8. RUBBER HASKET APPLIED TO TOP OF CURB
  9. ROOFING UP UNDER FLASHING. PROVIDE CURB TYPE AND FLASHING PER ROOFING MANUFACTURER'S REQUIREMENTS
  10. BIRD SCREEN
  11. CENTER TRANSITION TO DUCTWORK FROM DAMPER OR CURB. PROVIDE 3x DIAMETER STRAIGHT RUN MINIMUM.

**GENERAL NOTES:**

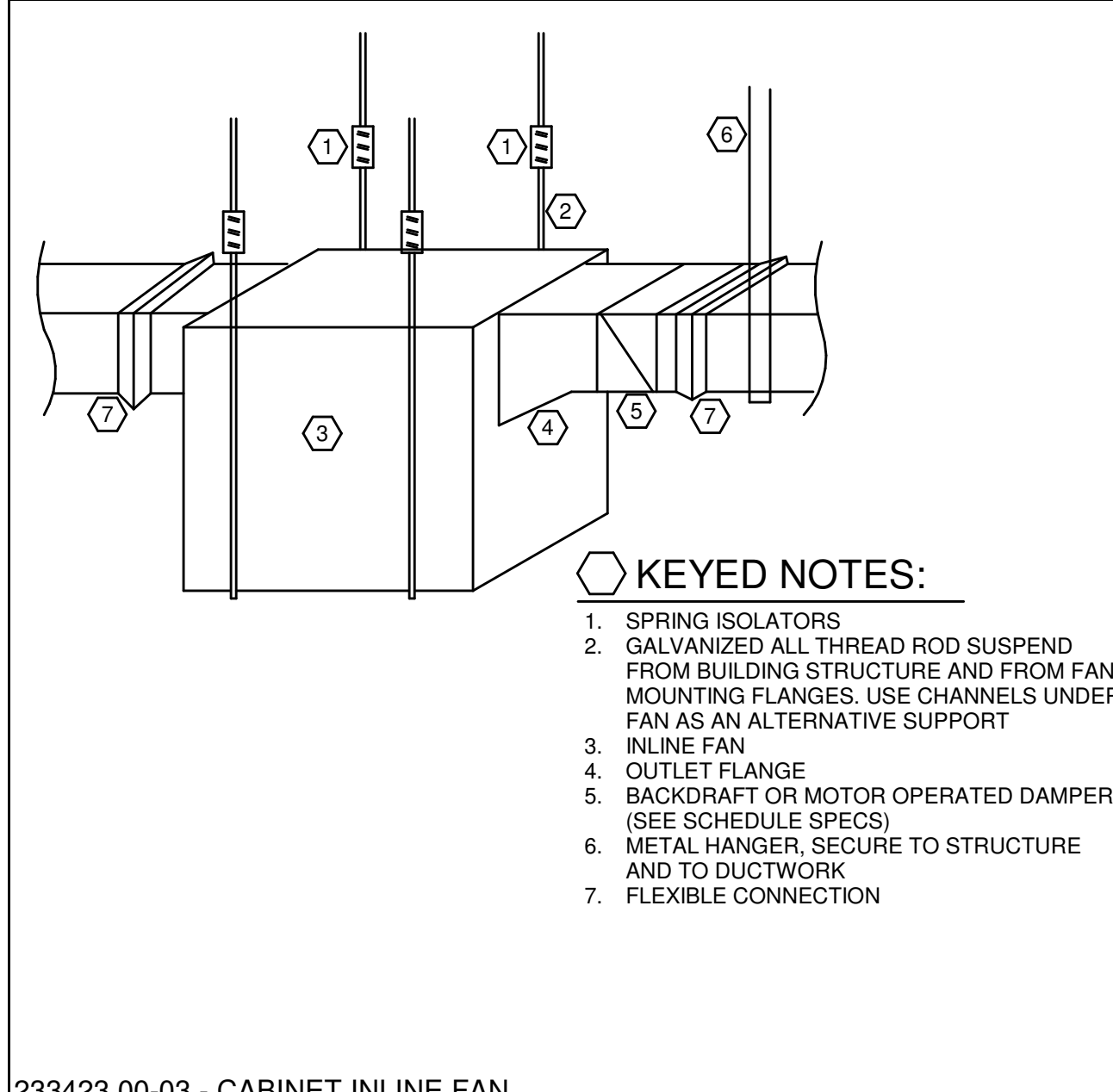
A. DELETE CANT FOR SINGLE MEMBRANE ROOFS

B. TOP OF CURB MUST BE LEVEL. FABRICATE PITCH IN CURB IF NECESSARY

C. CONTRACTOR HAS THE OPTION TO INCREASE THE HEIGHT OF THE CURB OR ADD BLOCKING TO THE CURB. THE ADDITIONAL HEIGHT REQUIRED SHALL EQUAL THE ROOF ASSEMBLY THICKNESS. THE CURB INTAKE OPENING SHALL BE AT A MINIMUM OF 12" ABOVE FINISHED ROOF.

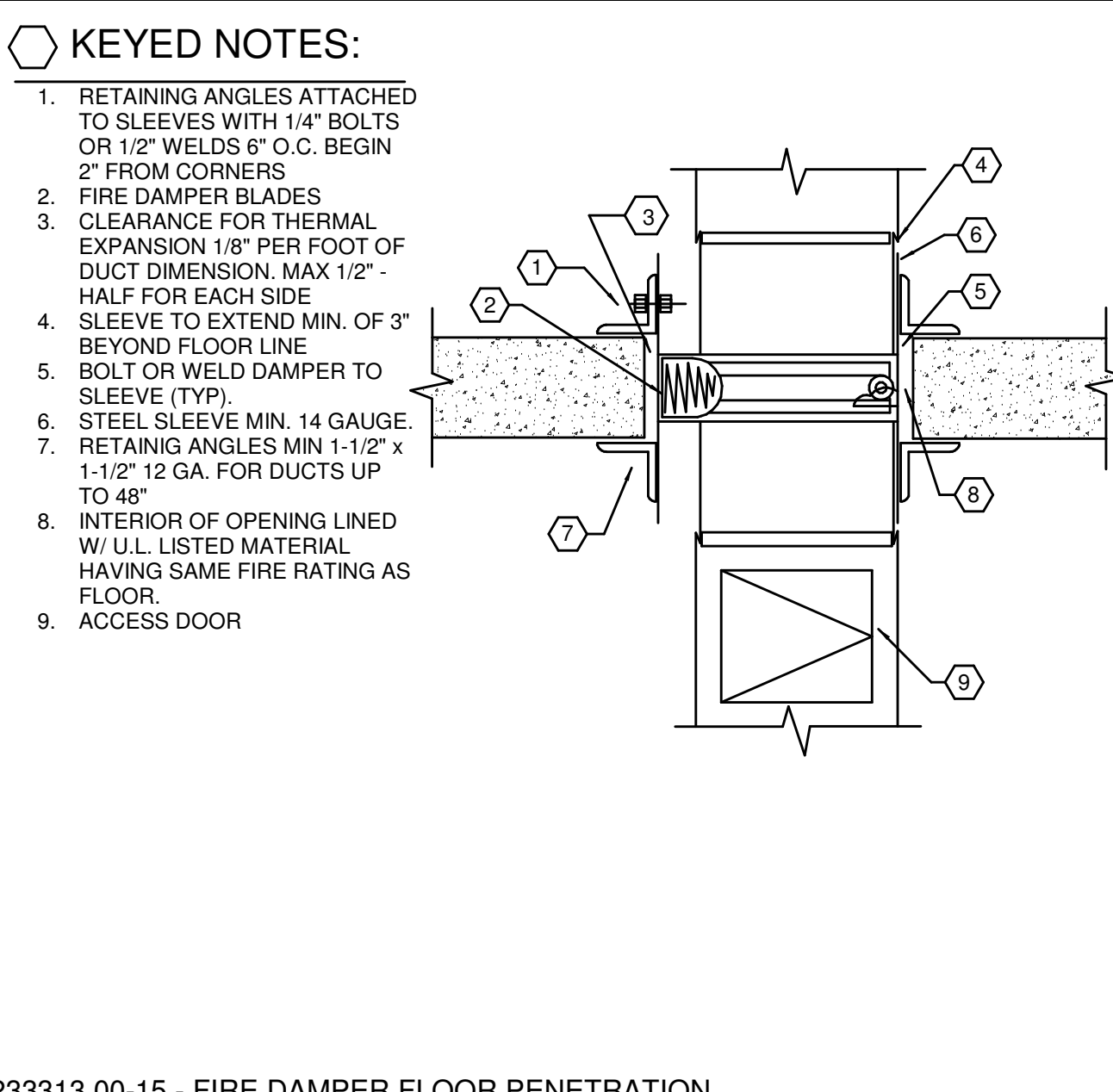
D. LOCATE A MINIMUM OF 6" FROM EDGE OF ROOF, INTAKES, AND ROOF HATCH.

233423.00-05 - EXHAUST FAN  
SCALE: NONE



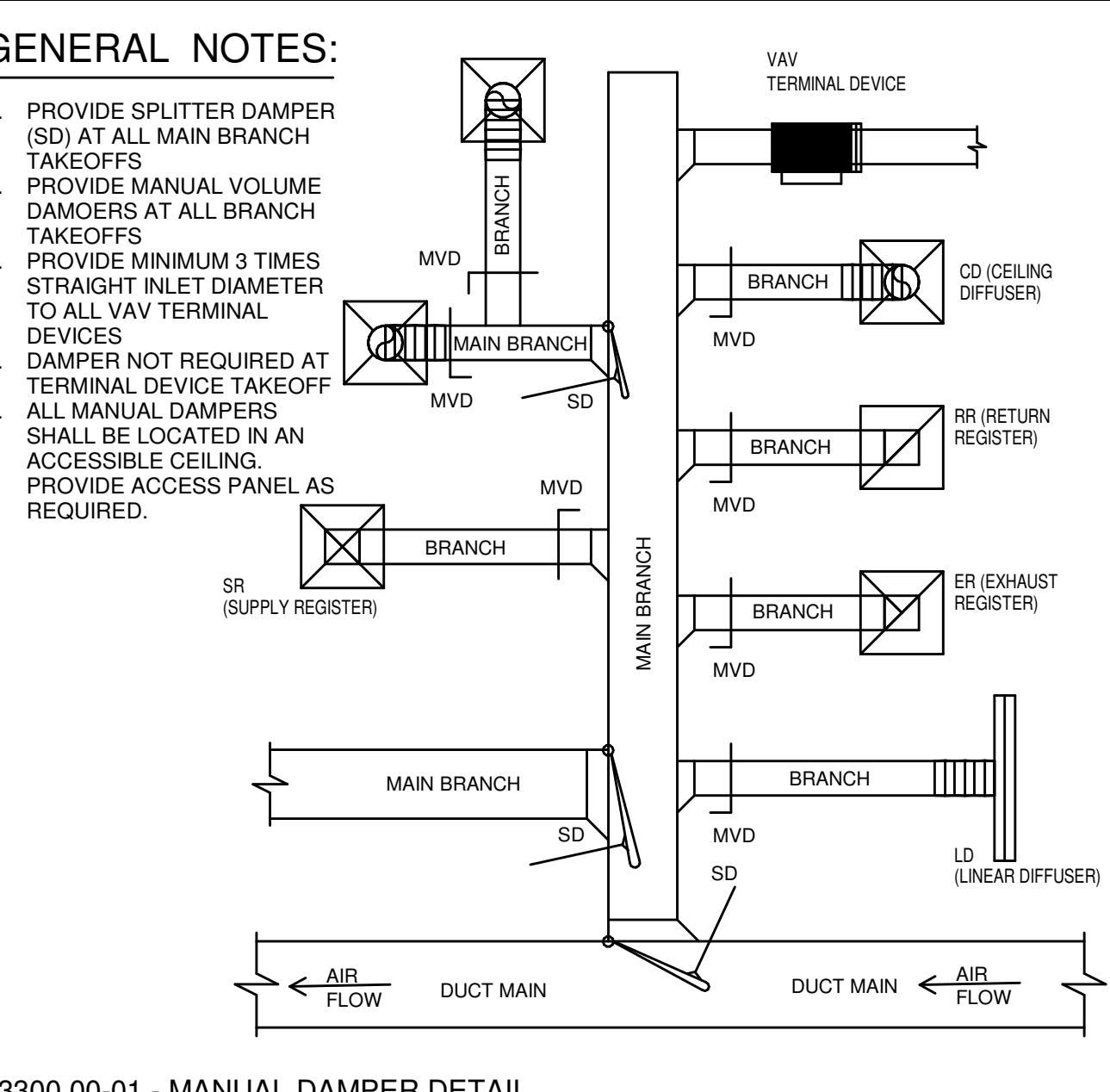
- KEYED NOTES:**
1. SPRING ISOLATORS
  2. GALVANIZED ALL THREAD ROD SUSPEND FROM BUILDING STRUCTURE AND FROM FAN MOUNTING FLANGES. USE CHANNELS UNDER FAN AS AN ALTERNATIVE SUPPORT
  3. IN-LINE FAN
  4. OUTLET FLANGE
  5. BACKDRAFT OR MOTOR OPERATED DAMPER (SEE SCHEDULE SPECS)
  6. METAL HANGER, SECURE TO STRUCTURE AND TO DUCTWORK
  7. FLEXIBLE CONNECTION

233423.00-03 - CABINET IN-LINE FAN  
SCALE: NONE



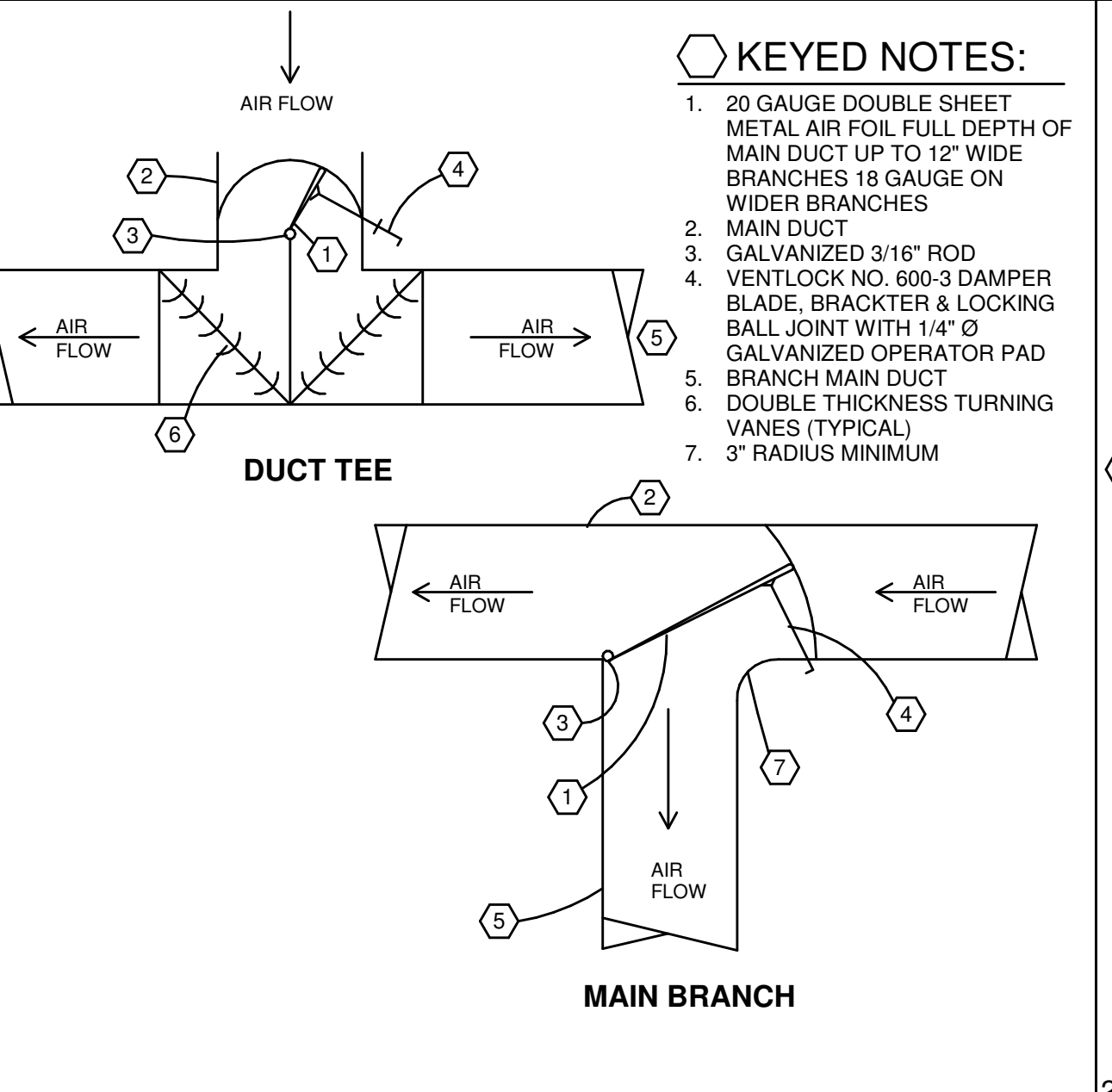
- KEYED NOTES:**
1. RETAINING ANGLES ATTACHED TO SLEEVES WITH 1/4" BOLTS OR 1/2" WELDS 6" O.C. BEGIN 2" FROM CORNERS
  2. FIRE DAMPER BLADES
  3. CLEARANCE FOR THERMAL EXPANSION 1/8" PER FOOT OF DUCT DIMENSION. MAX 1/2" - HALF FOR EACH SIDE
  4. SLEEVE TO EXTEND MIN. OF 3" BEYOND FLOOR LINE
  5. BOLT OR WELD DAMPER TO SLEEVE (TYP)
  6. STEEL SLEEVE MIN. 14 GAUGE
  7. RETAINING ANGLES MIN 1-1/2" x 1-1/2" 12 GA. FOR DUCTS UP TO 48"
  8. INTERIOR OF OPENING LINED W/ U.L. LISTED MATERIAL HAVING SAME FIRE RATING AS FLOOR.
  9. ACCESS DOOR

233313.00-15 - FIRE DAMPER FLOOR PENETRATION  
SCALE: NONE



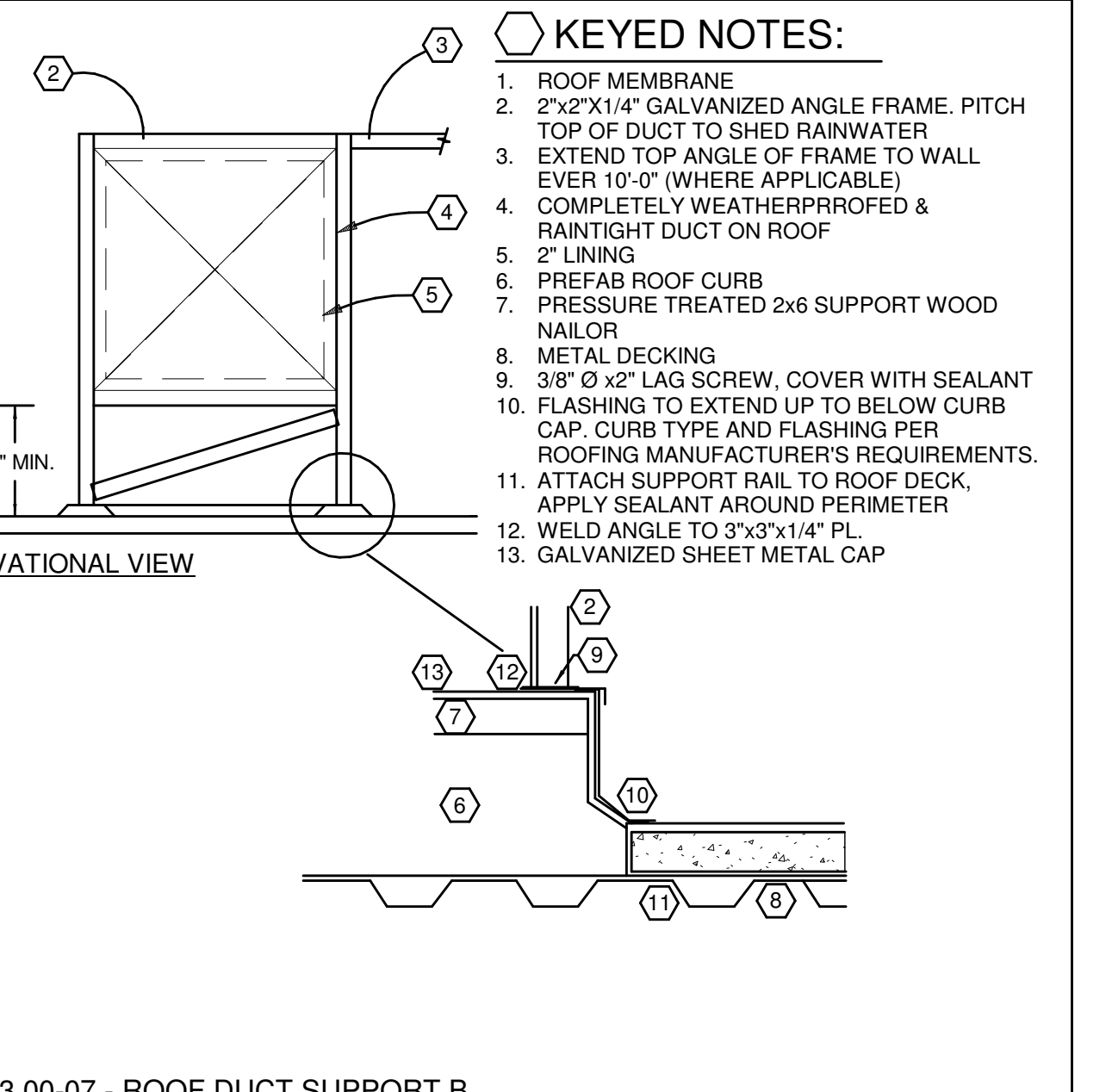
- GENERAL NOTES:**
1. PROVIDE SPLITTER DAMPER (SD) AT ALL MAIN BRANCH TAKEOFFS
  2. PROVIDE MANUAL VOLUME DAMPERS AT ALL BRANCH TAKEOFFS
  3. PROVIDE MINIMUM 3 TIMES STRAIGHT INLET DIAMETER TO ALL VAV TERMINAL DEVICES
  4. DAMPER NOT REQUIRED AT TERMINAL DEVICE TAKEOFF
  5. ALL MANUAL DAMPERS SHALL BE LOCATED IN AN ACCESSIBLE CEILING. PROVIDE ACCESS PANEL AS REQUIRED.

233300.00-01 - MANUAL DAMPER DETAIL  
SCALE: NONE



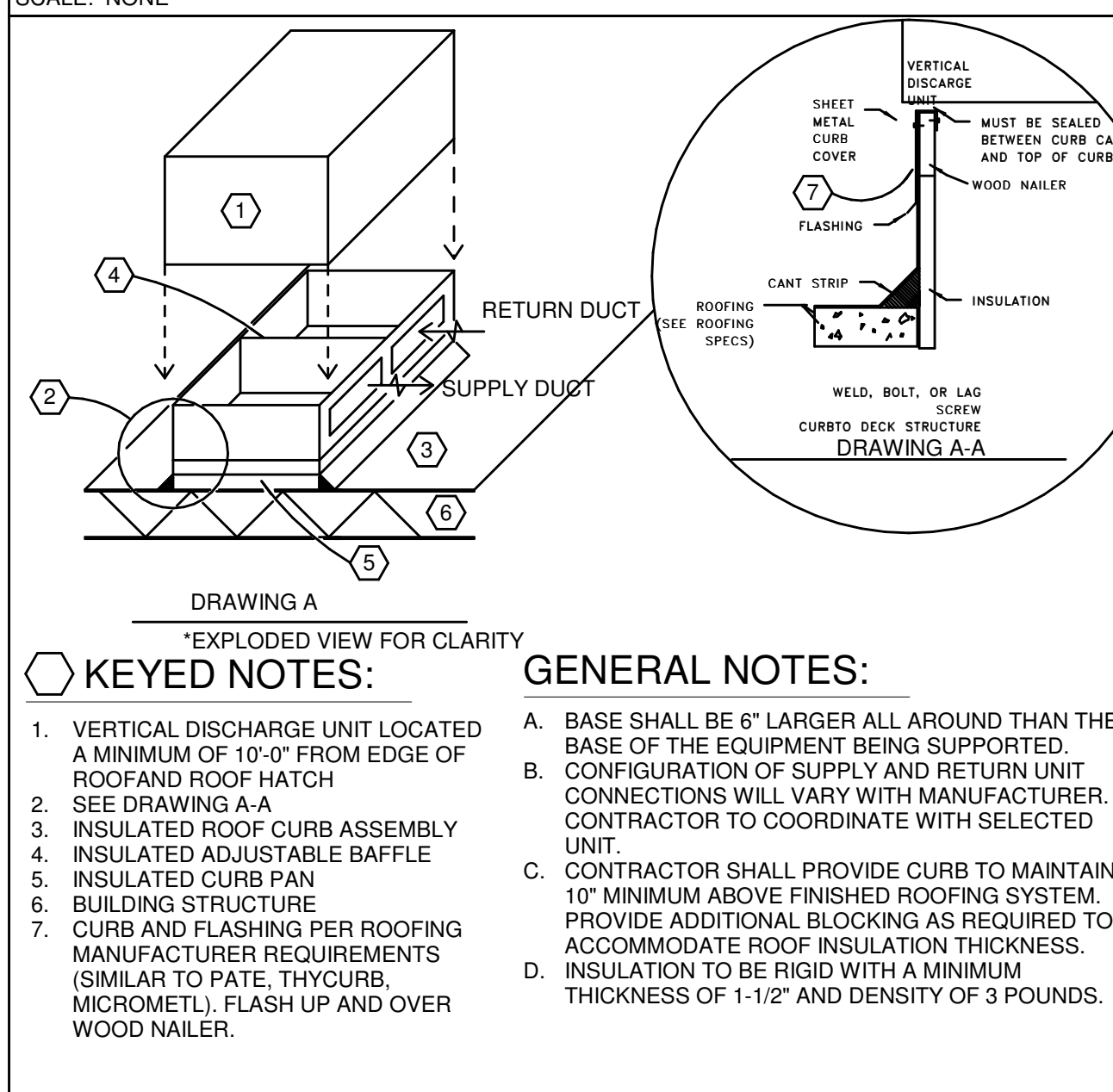
- KEYED NOTES:**
1. 20 GAUGE DOUBLE SHEET METAL AIR FUL FULL DEPTH OF MAIN DUCT UP TO 12" WIDE BRANCHES 18 GAUGE ON WIDER BRANCHES
  2. MAIN DUCT
  3. GALVANIZED 3/16" ROD
  4. VENTLOCK NO. 300-3 DAMPER BLADE, BRACKET & LOCKING BALL, JOINT WITH 1/4" Ø GALVANIZED OPERATOR PAD
  5. BRANCH MAIN DUCT
  6. DOUBLE THICKNESS TURNING VANES (TYPICAL)
  7. 3" RADIUS MINIMUM

233113.00-07 - ROOF DUCT SUPPORT B  
SCALE: NONE



- KEYED NOTES:**
1. ROOF MEMBRANE
  2. 2"x2"x1/4" GALVANIZED ANGLE FRAME. PITCH TOP OF DUCT TO SLED RAINWATER
  3. EXTEND TOP ANGLE OF FRAME TO WALL EVER 10'-0" (WHERE APPLICABLE)
  4. COMPLETELY WEATHERPROOFED & RAINTIGHT DUCT ON ROOF
  5. 2" LINING
  6. PREFAB CURB
  7. PRESSURE TREATED 2x6 SUPPORT WOOD NAILED
  8. METAL DECKING
  9. 3/8" Ø 2" LAG SCREW. COVER WITH SEALANT FLASHING TO EXTEND UP TO BELOW CURB CAP. CURB TYPE AND FLASHING PER ROOFING MANUFACTURER'S REQUIREMENTS.
  11. ATTACH SUPPORT RAIL TO ROOF DECK. APPLY SEALANT AROUND PERIMETER
  12. WELD ANGLE TO 3"x3"x1/4" PL.
  13. GALVANIZED SHEET METAL CAP

233113.00-07 - ROOF DUCT SUPPORT B  
SCALE: NONE



- KEYED NOTES:**
1. VERTICAL DISCHARGE UNIT LOCATED A MINIMUM OF 10'-0" FROM EDGE OF ROOF AND ROOF HATCH
  2. SEE DRAWING A-A
  3. INSULATED ROOF CURB ASSEMBLY
  4. INSULATED ADJUSTABLE BAFFLE
  5. INSULATED CURB PAN
  6. BUILDING STRUCTURE
  7. CURB AND FLASHING PER ROOFING MANUFACTURER REQUIREMENTS (SIMILAR TO PATE. THEY REQUIRE MICROMETAL). FLASH UP AND OVER WOOD NAILED.

**GENERAL NOTES:**

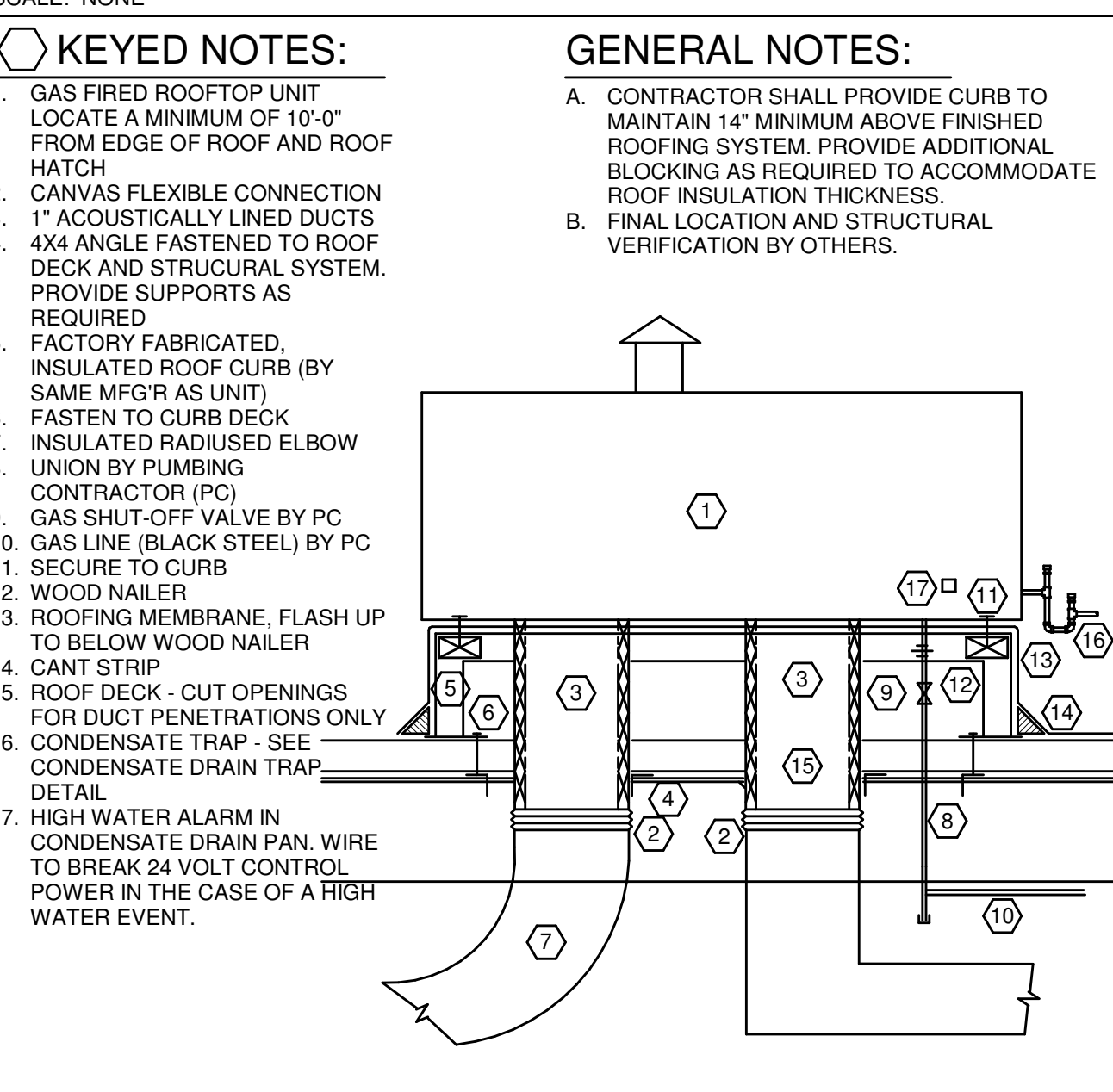
A. BASE SHALL BE 6" LARGER ALL AROUND THE BASE OF THE EQUIPMENT BEING SUPPORTED.

B. CONFIGURATION OF SUPPLY AND RETURN UNIT CONNECTIONS WILL VARY WITH MANUFACTURER. CONTRACTOR TO COORDINATE WITH SELECTED UNIT.

C. CONTRACTOR SHALL PROVIDE CURB TO MAINTAIN 10" MINIMUM ABOVE FINISHED ROOFING SYSTEM. PROVIDE ADDITIONAL BLOCKING AS REQUIRED TO ACCOMMODATE ROOF INSULATION THICKNESS.

D. INSULATION TO BE RIGID WITH A MINIMUM THICKNESS OF 1-1/2" AND DENSITY OF 3 POUNDS.

237433.00-10 - ROOF TOP EQUIPMENT HORZ DISCHARGE NON-TOP  
SCALE: NONE



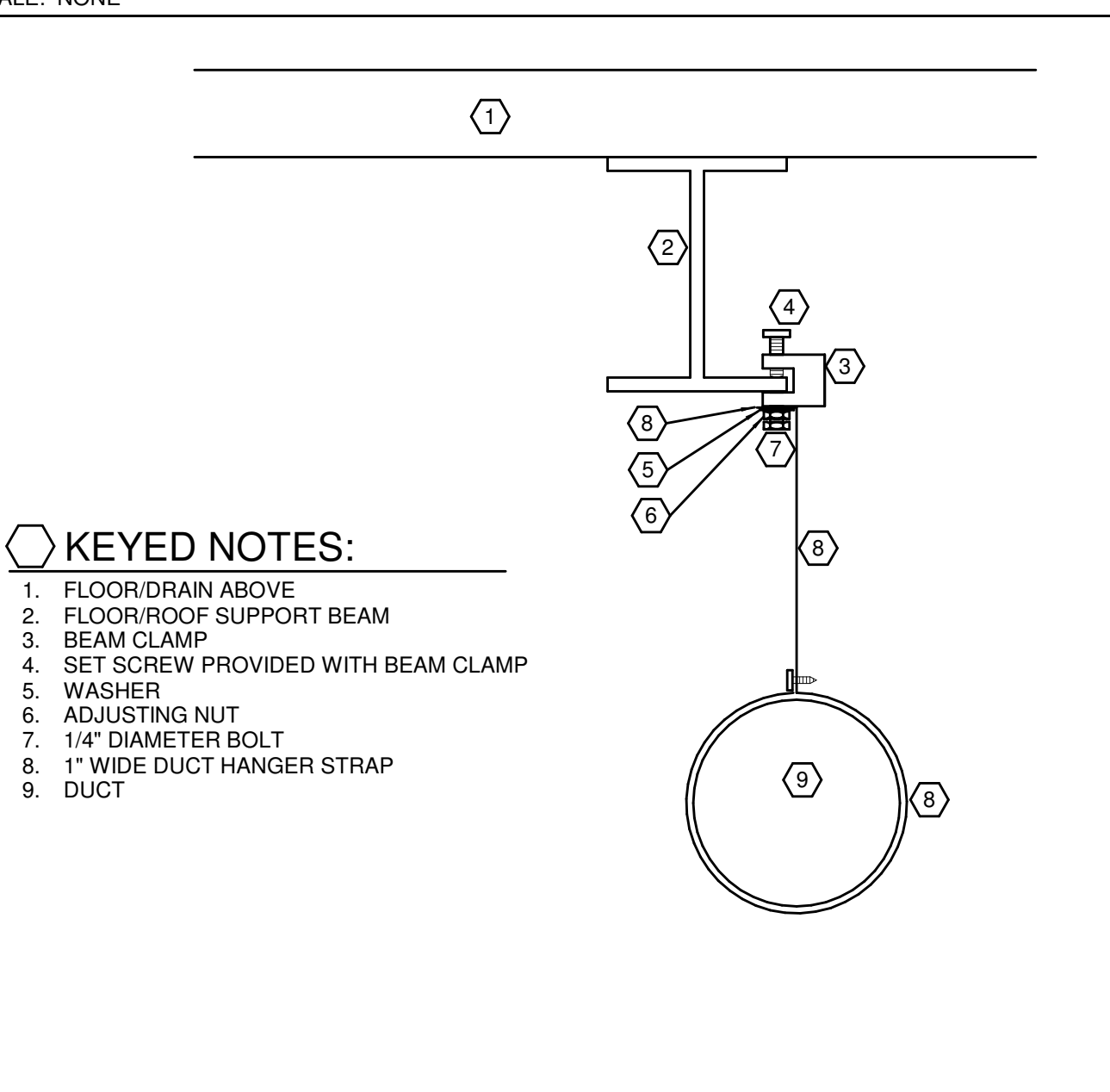
- KEYED NOTES:**
1. GAS FIRED ROOFTOP UNIT LOCATE A MINIMUM OF 10'-0" FROM EDGE OF ROOF AND ROOF HATCH
  2. CANVAS FLEXIBLE CONNECTION TO ACCOMMODATE ROOF INSULATION THICKNESS.
  3. 1" ACUSTICALLY LINED DUCTS
  4. 4X4 ANGLE FASTENED TO ROOF DECK AND STRUCTURAL SYSTEM. PROVIDE SUPPORTS AS REQUIRED
  5. FACTORY FABRICATED, INSULATED ROOF CURB (BY SAME MFG AS UNIT)
  6. FASTEN TO CURB DECK
  7. INSULATED RADIUS ELBOW
  8. UNION BY PLUMBING CONTRACTOR (PC)
  9. GAS SHUT-OFF VALVE BY PC
  10. GAS LINE (BLACK STEEL) BY PC
  11. SECURE TO CURB
  12. WOOD NAILED
  13. ROOFING MEMBRANE, FLASH UP TO BELOW WOOD NAILED
  14. CANT STRIP
  15. ROOF DECK - CUT OPENINGS FOR DUCT PENETRATIONS ONLY
  16. CONDENSATE TRAP - SEE CONDENSATE DRAIN TRAP
  17. HIGH WATER ALARM IN CONDENSATE DRAIN PAN. WIRE TO BREAK VOLT CONTROL POWER IN THE CASE OF A HIGH WATER EVENT.

**GENERAL NOTES:**

A. CONTRACTOR SHALL PROVIDE CURB TO MAINTAIN 14" MINIMUM ABOVE FINISHED ROOFING SYSTEM. PROVIDE ADDITIONAL BLOCKING AS REQUIRED TO ACCOMMODATE ROOF INSULATION THICKNESS.

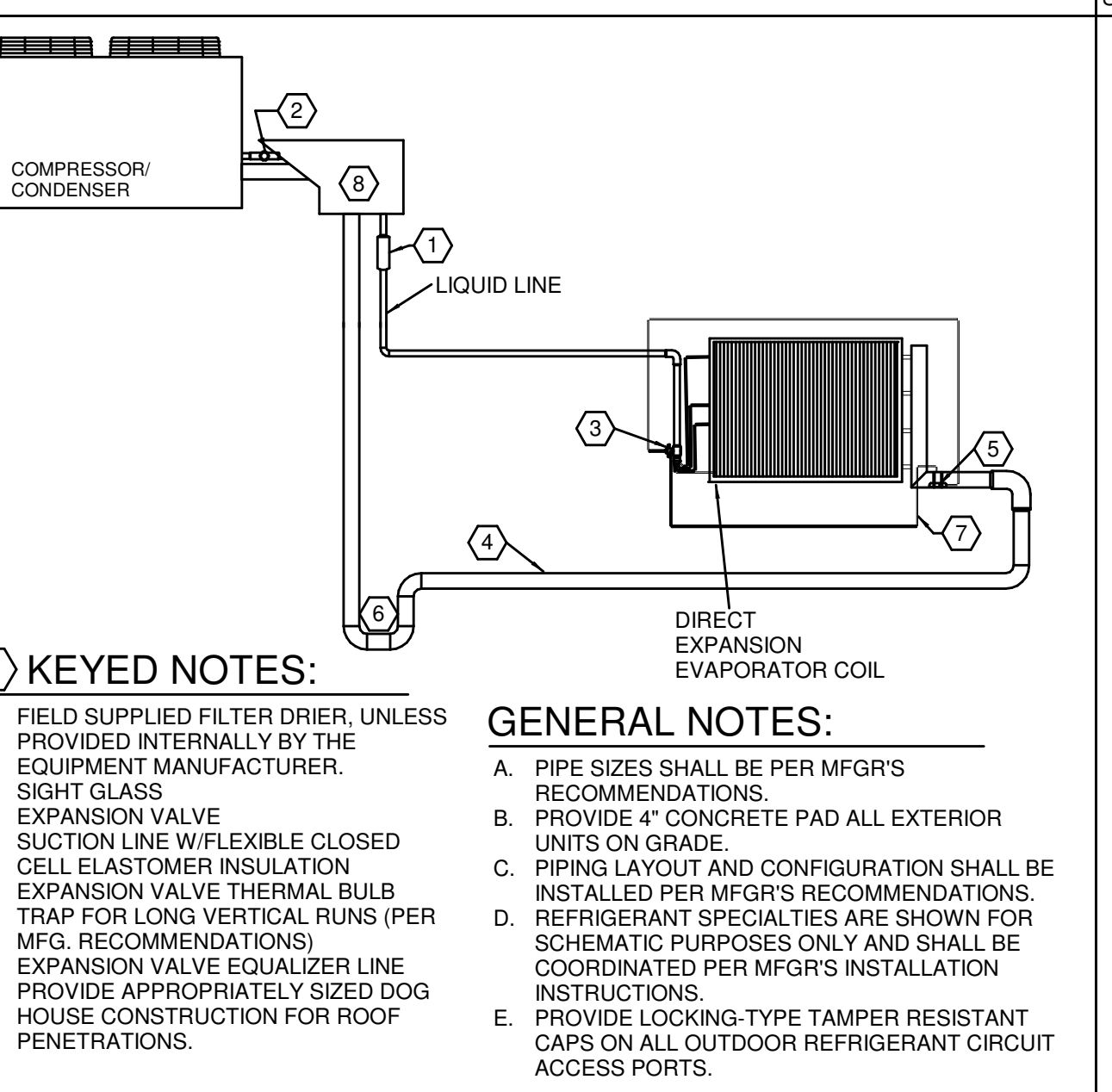
B. FINAL LOCATION AND STRUCTURAL VERIFICATION BY OTHERS.

237433.00-04 - ROOF CURB & MOUNTING C  
SCALE: NONE



- KEYED NOTES:**
1. FLOOR/DRAIN ABOVE
  2. FLOOR/ROOF SUPPORT BEAM
  3. BEAM CLAMP
  4. SET SCREW PROVIDED WITH BEAM CLAMP
  5. WASHER
  6. ADJUSTING NUT
  7. 1/4" DIAMETER BOLT
  8. 1" WIDE DUCT HANGER STRAP
  9. DUCT

233113.00-02 - DUCT SUPPORT DETAIL  
SCALE: NONE



- KEYED NOTES:**
1. FIELD SUPPLIED FILTER DRIER, UNLESS PROVIDED INTERNALLY BY THE EQUIPMENT MANUFACTURER.
  2. SIGHT GLASS
  3. EXPANSION VALVE
  4. SUCTION LINE W/FLEXIBLE CLOSED CELL ELASTOMER INSULATION
  5. EXPANSION VALVE THERMAL BULB
  6. TRAP FOR LONG VERTICAL RUNS (PER MFG. RECOMMENDATIONS)
  7. EXPANSION VALVE EQUALIZER LINE
  8. PROVIDE APPROPRIATELY SIZED DOG HOUSE CONSTRUCTION FOR ROOF PENETRATIONS.

**GENERAL NOTES:**

A. PIPE SIZES SHALL BE PER MFG'S RECOMMENDATIONS.

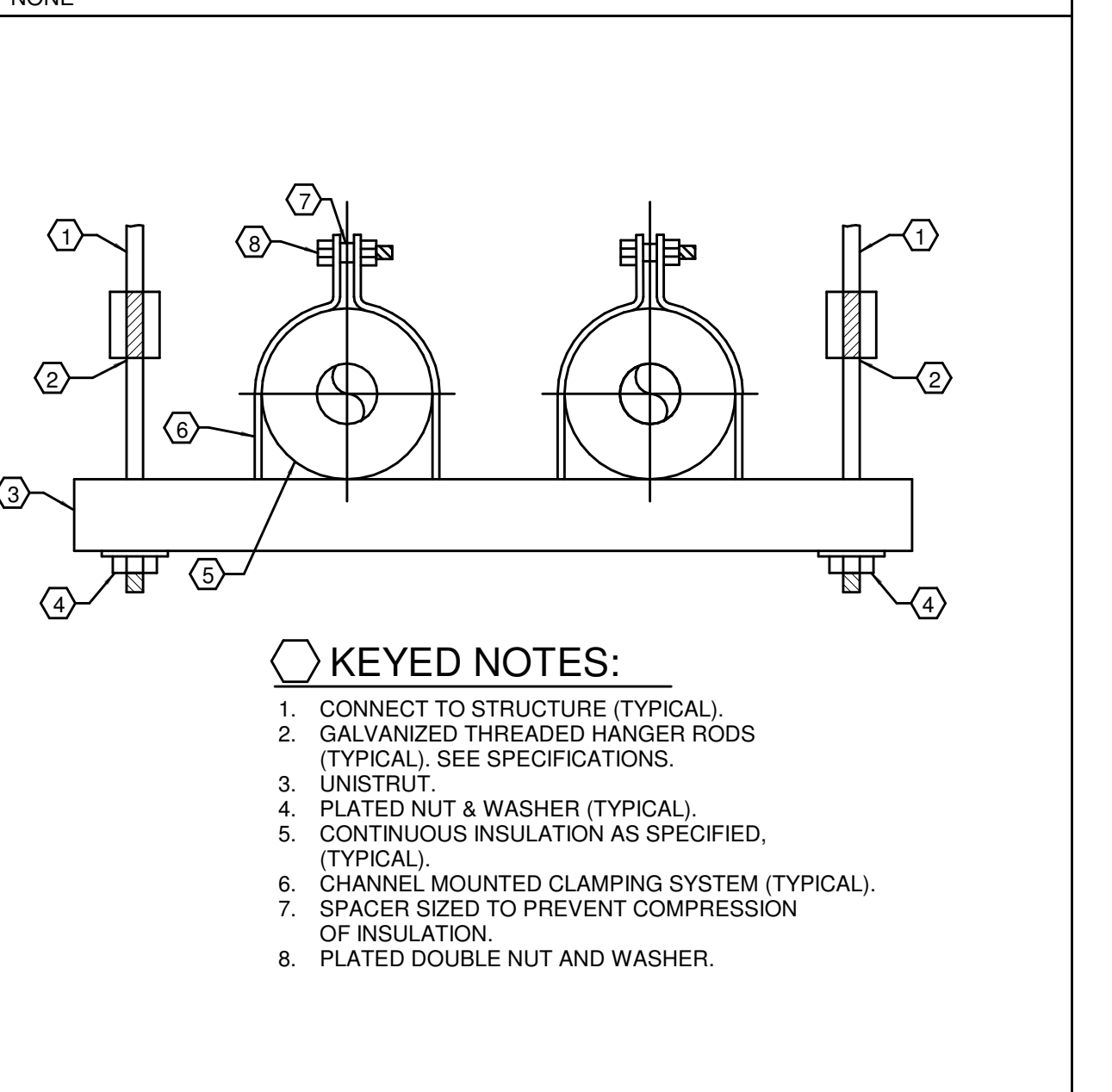
B. PROVIDE 4" CONCRETE PAD ALL EXTERIOR UNITS ON GRADE.

C. PIPING LAYOUT AND CONFIGURATION SHALL BE INSTALLED PER MFG'S RECOMMENDATIONS.

D. REFRIGERANT SPECIALTIES ARE SHOWN FOR SCHEMATIC PURPOSES ONLY AND SHALL BE COORDINATED PER MFG'S INSTALLATION INSTRUCTIONS.

E. PROVIDE LOCKING-TYPE TAMPER RESISTANT CAPS ON ALL OUTDOOR REFRIGERANT CIRCUIT ACCESS PORTS.

232313.00-03 - REFRIGERANT PIPING A  
SCALE: NONE



- KEYED NOTES:**
1. CONNECT TO STRUCTURE (TYPICAL)
  2. GALVANIZED THREADED HANGER RODS (TYPICAL). SEE SPECIFICATIONS.
  3. UNISTRUT
  4. PLATED NUT & WASHER (TYPICAL).
  5. CONTINUOUS INSULATION AS SPECIFIED.
  6. CHANNEL MOUNTED CLAMPING SYSTEM (TYPICAL).
  7. SPACER SIZED TO PREVENT COMPRESSION OF INSULATION.
  8. PLATED DOUBLE NUT AND WASHER.

230529.00-02 - REFRIGERANT PIPING SUPPORT  
SCALE: NONE

**MSA DESIGN**  
CINCINNATI | COLUMBUS | OLANDO  
msearch.com | 855.241.2666

**PRELIMINARY**  
NOT FOR CONSTRUCTION

**KLH ENGINEERS**  
KORHS LONGMAN HILL ENGINEERS, INC.  
MECHANICAL/ELECTRICAL ENGINEERS  
WWW.KLHENGINEERS.COM  
1538 ALEXANDRIA PIKE, SUITE 11  
FT. THOMAS, KENTUCKY 41075  
800.354.0763  
859.442.8050  
859.442.8058 FAX  
LEXINGTON, KENTUCKY  
LOUISVILLE, KENTUCKY  
COLUMBUS, OHIO

**POLICE DEPARTMENT**  
**GREEN TOWNSHIP**  
Harrison Road  
Cincinnati, Ohio 45247

This drawing and the design concepts represented, as instruments of service, are the sole property of MSA DESIGN, and may not be used, reproduced, or copied in whole or part, for any purpose without the written authorization of MSA DESIGN.  
Copyright MSA DESIGN  
MSA DESIGN All Rights Reserved  
MSA DESIGN is a Division of MSA DESIGN

| NO. | DATE       | ISSUED / REVISION |
|-----|------------|-------------------|
|     | 09/22/2023 | DO SET            |
|     | 12/13/2023 | 90% SET           |
| PZ  | 01/09/2024 | ADDENDUM P2       |

PROJECT NO. **23103.00**

DRAWING TITLE:  
**MECHANICAL - DETAILS**



HVAC ACCESSORIES

- ACCESSORIES: 1. MOTOR DAMPER 2. ECONOMIZER 3. ROOF CURB 4. HAIL GUARDS 5. INTAKE HOOD 6. VIBRATION ISOLATION 7. FLAT FILTER 8. FILTER/MIXING BOX 9. ACCESS DOOR 10. FLEX CONNECTIONS 11. MOUNTING COLLAR 12. HOT GAS BYPASS 13. FACE/BYPASS DAMPER 14. CONDENSATE PUMP 15. MOTOR GUARD 16. GREASE TRAP 17. DUCT FLANGES 18. BASE RAIL 19. HUMIDIFIER 20. CO2 SENSORS 21. ECONOM POWER EXHAUST 22. ECON BAROMETRIC RELIEF 23. HOT GAS REHEAT COIL 24. SHAFT GROUNDING BRUSHES

HVAC LOAD SCHEDULE

THE HEATING AND COOLING LOAD CALCULATIONS ARE BASED ON THE RTG (RADIANT TIME SERIES) METHOD. ASSUMPTIONS AND EXECUTION OF THESE METHODS ARE PER ASHRAE 183-2007 STANDARD FOR PEAK COOLING AND HEATING LOAD CALCULATIONS IN BUILDINGS EXCEPT LOW-RISE RESIDENTIAL BUILDINGS.

Table with columns for COOLING LOAD BREAKDOWN and HEATING LOAD BREAKDOWN, listing various heat gain and loss sources like roof, walls, windows, and equipment.

Table with columns for EQUIPMENT MARK, CROOF, CWALL, CPART, CGLASS, CCURTAINS, CEQUIP, CPSENS, CSSENS, CFAN, COAS, CTSENS, CPLAT, COAL, CTLAT, CTOT, HROOF, HWALL, HGLASS, HSPACE, HSLAB, HOA, HTOT, listing equipment and their respective load values.

HVAC VENTILATION SCHEDULE

Large table with columns for NUMBER, NAME, AREA, LEVEL, PEOPLE, OA PER PERSON, OA PER SQ FT, REQ SUP, ACT SUP, REQ OA, ACT OA, ACT RET, ACT EXH, CRIT OA, and PRESSURE, detailing ventilation requirements for various rooms.

HVAC DIFFUSERS AND REGISTERS SCHEDULE

Table with columns for TAG, KLIH Manufacturer, KLIH Model, FACE, Size, MOUNTING, MATERIAL, FINISH, DAMPER TYPE, BORDER STYLE, listing diffuser and register specifications.

HVAC LOUVER SCHEDULE

Table with columns for TAG, DESCRIPTION, MANUFACTURER, MODEL, FACE SIZE, FREE AREA, MATERIAL, FINISH, listing louver specifications.

HVAC WALL HEATERS SCHEDULE

Table with columns for EQUIPMENT MARK, DESCRIPTION, LOCATION, STATUS, MANUFACTURER, MODEL, HTG MBH, ELECTRIC CONNECTION SUMMARY, AVAILABLE FAULT CURRENT, listing wall heater specifications.

HVAC GAS-FIRED UNIT HEATERS SCHEDULE

Table with columns for EQUIPMENT MARK, DESCRIPTION, MANUFACTURER, MODEL, HTG MBH, MIN HTG, GAS HTG IN (mbh), GAS HTG OUT (mbh), MAX GAS PRESSURE (PSIG), ELECTRIC CONNECTION SUMMARY, AVAILABLE FAULT CURRENT, listing gas-fired heater specifications.

HVAC ROOFTOP UNITS SCHEDULE

Table with columns for EQUIPMENT MARK, DESCRIPTION, WEIGHT, MANUFACTURER, MODEL, MIN EER, CFM, ESP, BHP, OACFM, NOMINAL TONS, MAT CLG, MAT CLG DB, MAT CLG WB, CLG MBH, CLG SENS, LAT DB, LAT CLG, MAT HTG, HTG MBH, MIN HTG, GAS HTG, GAS HTG OUT, MIN GAS PRESSURE, MAX GAS PRESSURE, EMERGENCY, ELECTRIC CONNECTION SUMMARY, AVAILABLE FAULT CURRENT, ACCESSORIES.

HVAC ELECTRICAL COORDINATION SCHEDULE

Table with columns for CONNECTION MARK, DESCRIPTION, VOLTAGE, PHASE, EMERGENCY, HP, WATTS, HTG KW, FLA, MCA, OCP, FED FROM, DC TYPE, DC FURN, DC INST, DC WIRE, MC TYPE, MC FURN, MC INST, MC WIRE, CN TYPE, CN FURN, CN INST, CN WIRE, SHORT CIRCUIT RATING, AVAILABLE FAULT CURRENT, listing electrical coordination details for various units.

HVAC AIR TERMINAL UNIT SCHEDULE

Table with columns for EQUIPMENT MARK, DESCRIPTION, DUCT COIN (in), MANUFACTURER, MODEL, MAX CFM, MIN CFM, HMIN CFM, HTG MBH, EMERGENCY, ELECTRIC CONNECTION SUMMARY, listing air terminal unit specifications.

HVAC AIR SOURCE UNITARY HEAT PUMP SCHEDULE

Table with columns for EQUIPMENT MARK, DESCRIPTION, WEIGHT, MANUFACTURER, MODEL, MIN COP, SEER, EER, NOMINAL TONS, CLG MBH, CLG SENS, LAT CLG DB, LAT CLG WB, HTG MBH, LAT HTG DB, ELECTRIC CONNECTION SUMMARY, AVAILABLE FAULT CURRENT, listing air source unitary heat pump specifications.

HVAC DUCTLESS SPLIT SYSTEMS (INDOOR UNITS) SCHEDULE

Table with columns for EQUIPMENT MARK, DESCRIPTION, FED FROM, MANUFACTURER, MODEL, NOMINAL TONS, MAT CLG, MAT CLG DB, MAT CLG WB, CLG MBH, CLG SENS, LAT CLG DB, LAT CLG WB, HTG MBH, LAT HTG DB, ELECTRIC CONNECTION SUMMARY, listing ductless split system indoor unit specifications.

HVAC FANS SCHEDULE

Table with columns for EQUIPMENT MARK, DESCRIPTION, WEIGHT, MANUFACTURER, MODEL, ESP, EMERGENCY, ELECTRIC CONNECTION SUMMARY, listing fan specifications.

HVAC GAS-FIRED UNIT HEATERS SCHEDULE

Table with columns for EQUIPMENT MARK, DESCRIPTION, MANUFACTURER, MODEL, HTG MBH, MIN HTG, GAS HTG IN (mbh), GAS HTG OUT (mbh), MAX GAS PRESSURE (PSIG), ELECTRIC CONNECTION SUMMARY, AVAILABLE FAULT CURRENT, listing gas-fired heater specifications.



KOHR'S LONGMAN/HEAL ENGINEERS, INC. MECHANICAL/ELECTRICAL ENGINEERS WWW.KHENGINEERS.COM 1538 ALEXANDRIA PIKE, SUITE 111 FT. THOMAS, KENTUCKY 41075 859-442-8050 859-442-8058 FAX LEXINGTON, KENTUCKY LOUISVILLE, KENTUCKY COLUMBUS, OHIO

POLICE DEPARTMENT GREEN TOWNSHIP Harrison Road Cincinnati, Ohio 45247

This drawing and the design concepts represented, as instruments of service, are the sole property of MSA DESIGN, and are not to be used, reproduced, or copied in whole or in part, for any purpose without the written authorization of MSA DESIGN. Copyright MSA DESIGN. MSA DESIGN is a MSA (NYSE:MSA) brand.

Table with columns for NO, DATE, ISSUED/REVISION, listing revision history.

PROJECT NO. 23103.00

DRAWING TITLE: MECHANICAL - SCHEDULES

Autodesk Docs/23103.00 - Green Twp - PD/250109.01-22-MEP-Green Township - Police Station 01/20/2024 11:10:2 AM