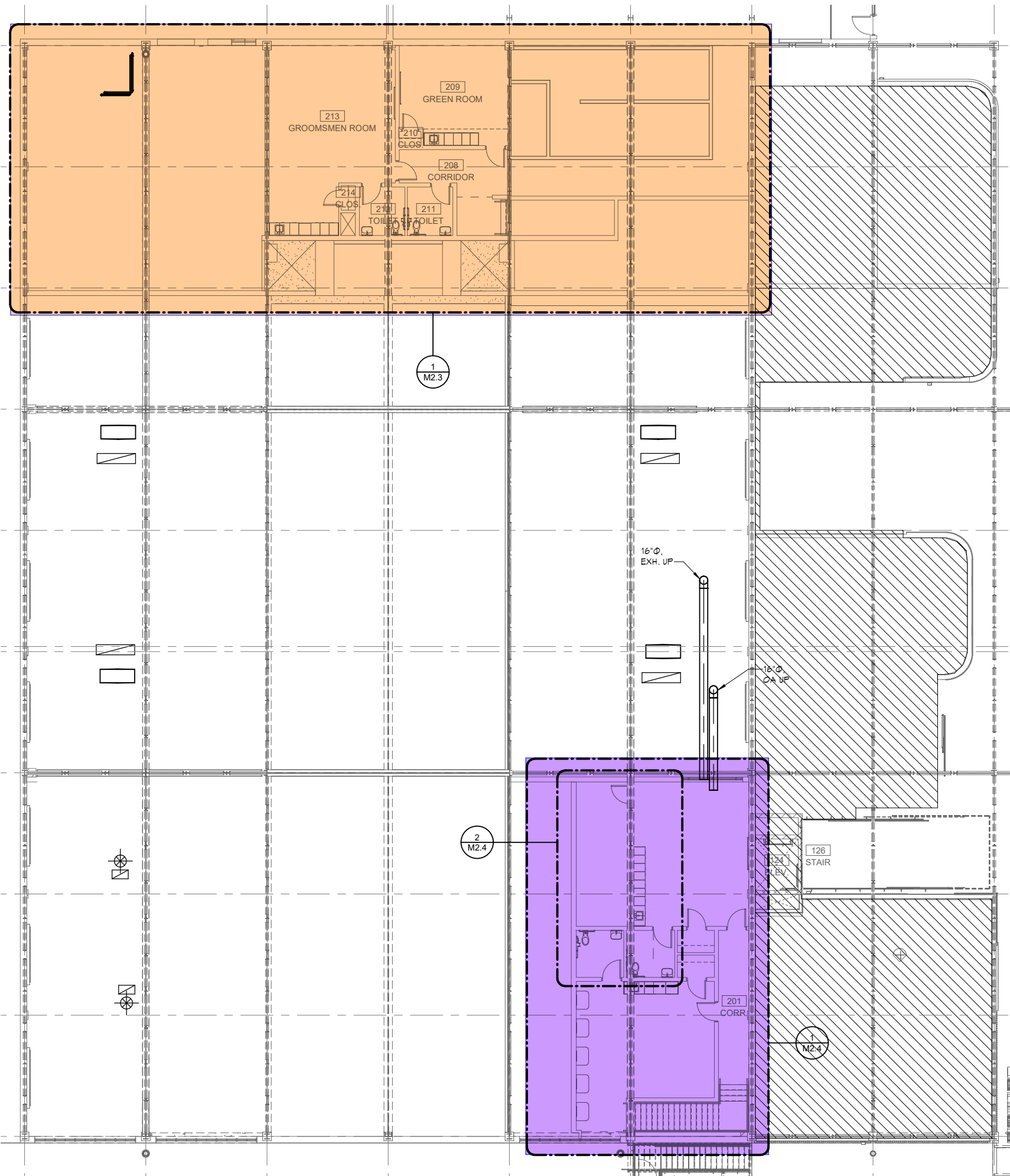


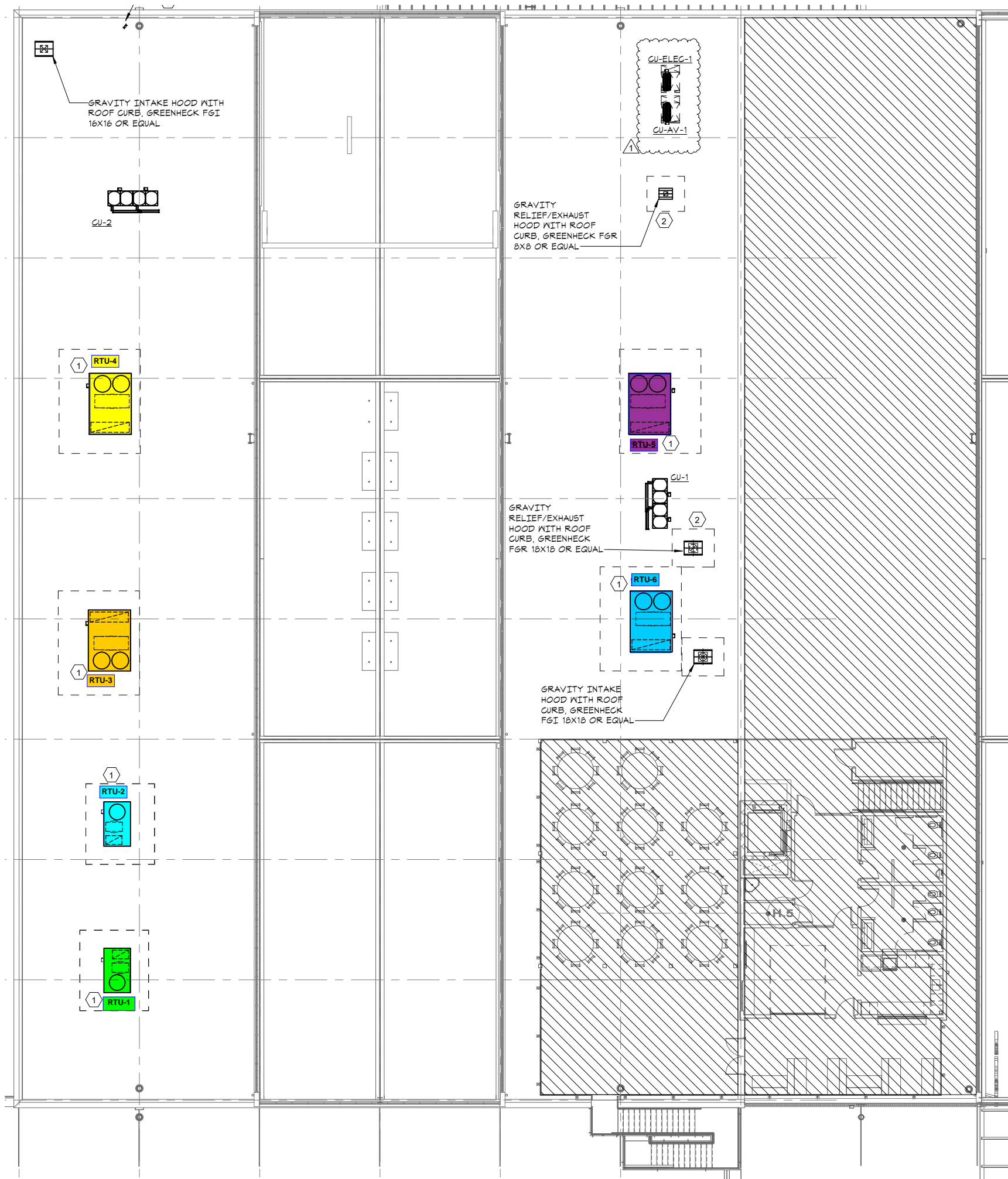
ALL EXPOSED DUCTWORK SHALL BE PAINT-GRIP SPIRAL ROUND DUCTWORK. SUPPLY AND OUTSIDE AIR DUCTWORK SHALL BE DOUBLE WALL, INTERNALLY INSULATED. ROUTE DUCT TIGHT TO UNDERSIDE OF STRUCTURE AND COORDINATE ROUTING WITH ARCHITECT AND ROOF PENETRATIONS PRIOR TO INSTALLATION.

REFER TO 1/M2.4 FOR DUCT SIZE AND AIR DISTRIBUTION

1 FIRST FLOOR - MECHANICAL PLAN  
 M1.1  
 Revelry Project (Charlotte, NC)



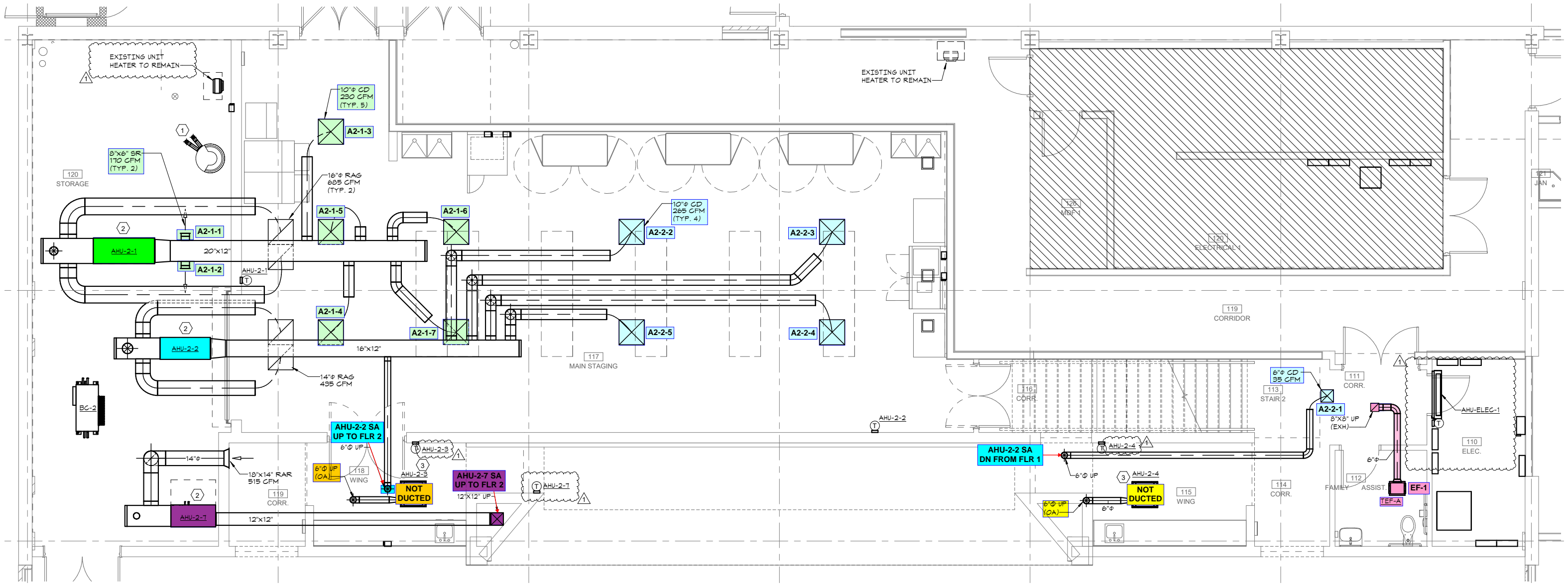
1 SECOND FLOOR - MECHANICAL PLAN  
 M1.2  
 Revelry Project (Charlotte, NC)



1  
M1.3

**ROOF - MECHANICAL PLAN**

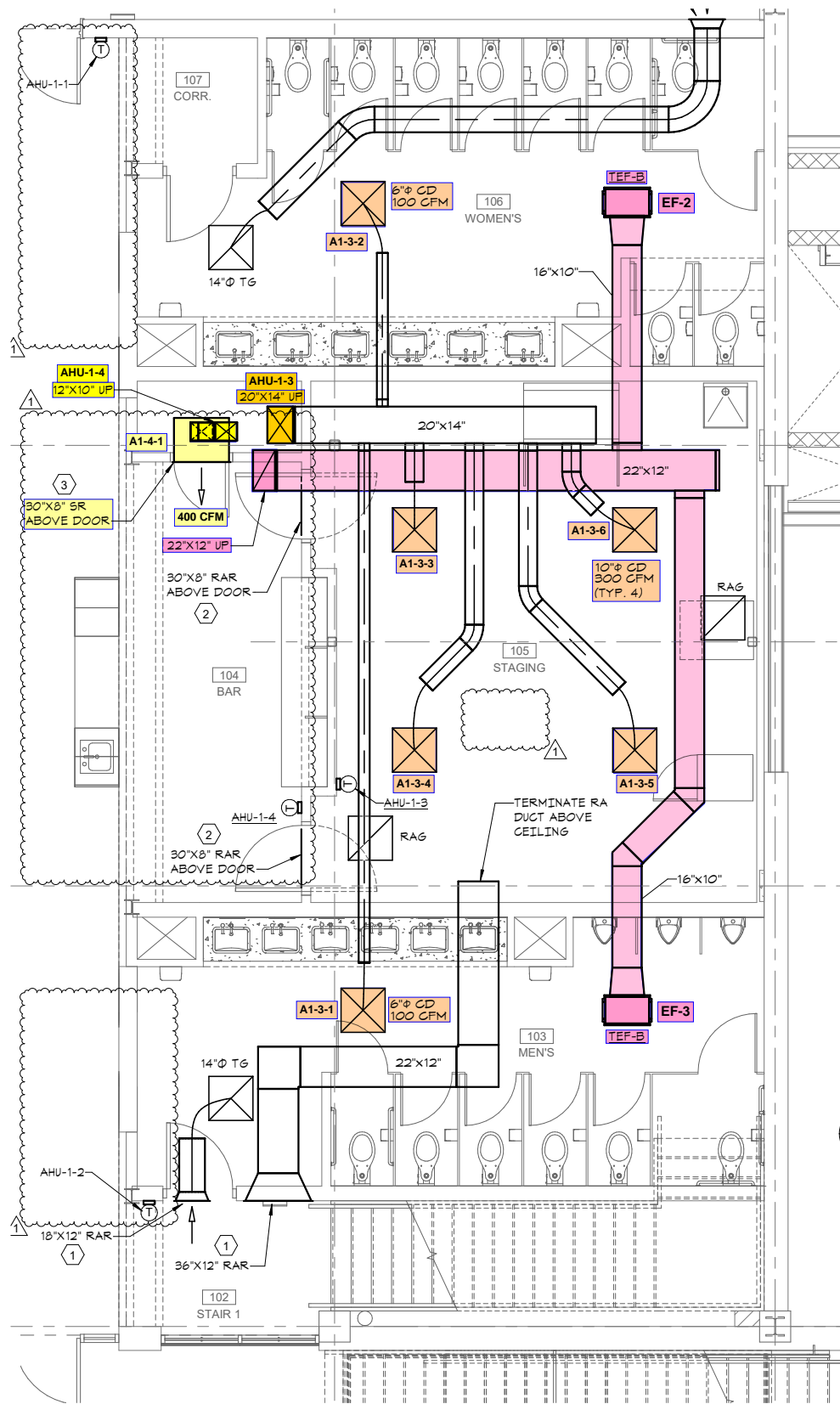
**Revelry Project (Charlotte, NC)**



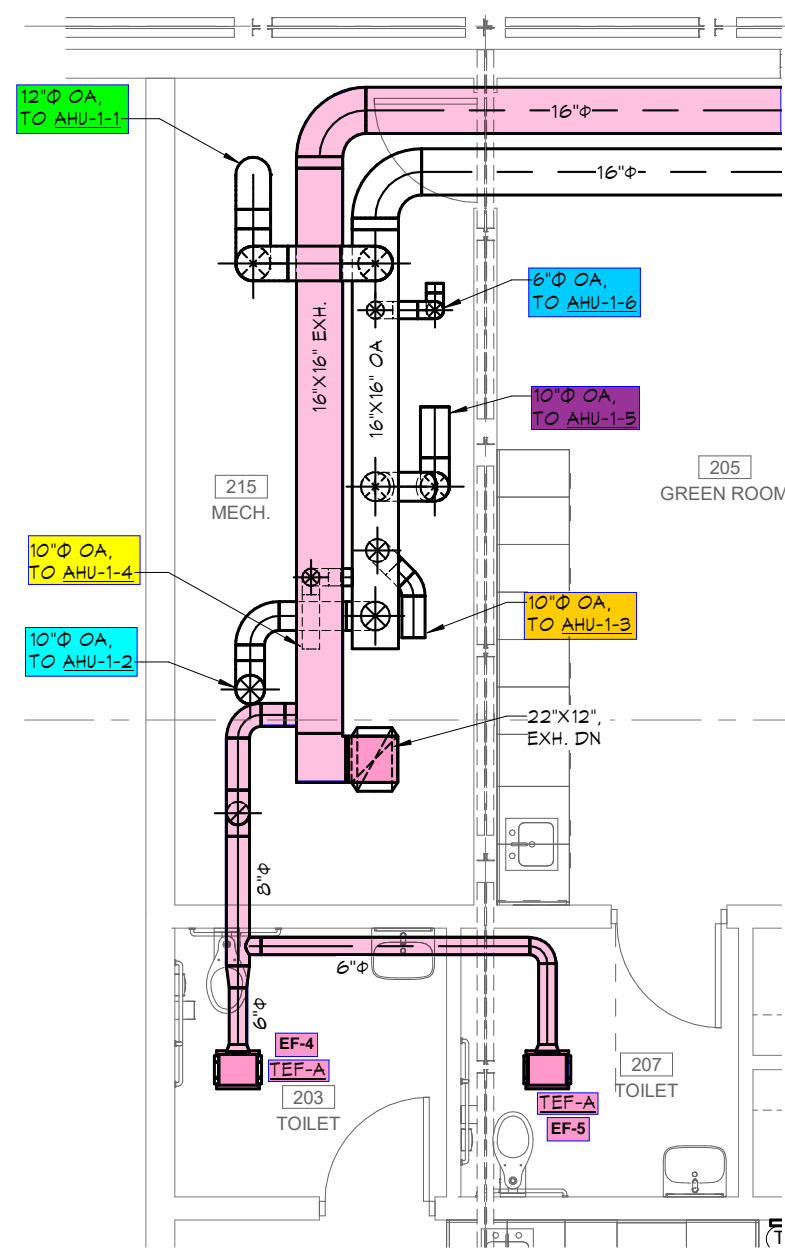
1 **FIRST FLOOR NORTH - ENLARGED MECHANICAL PLAN**  
M2.1

**Revelry Project (Charlotte, NC)**

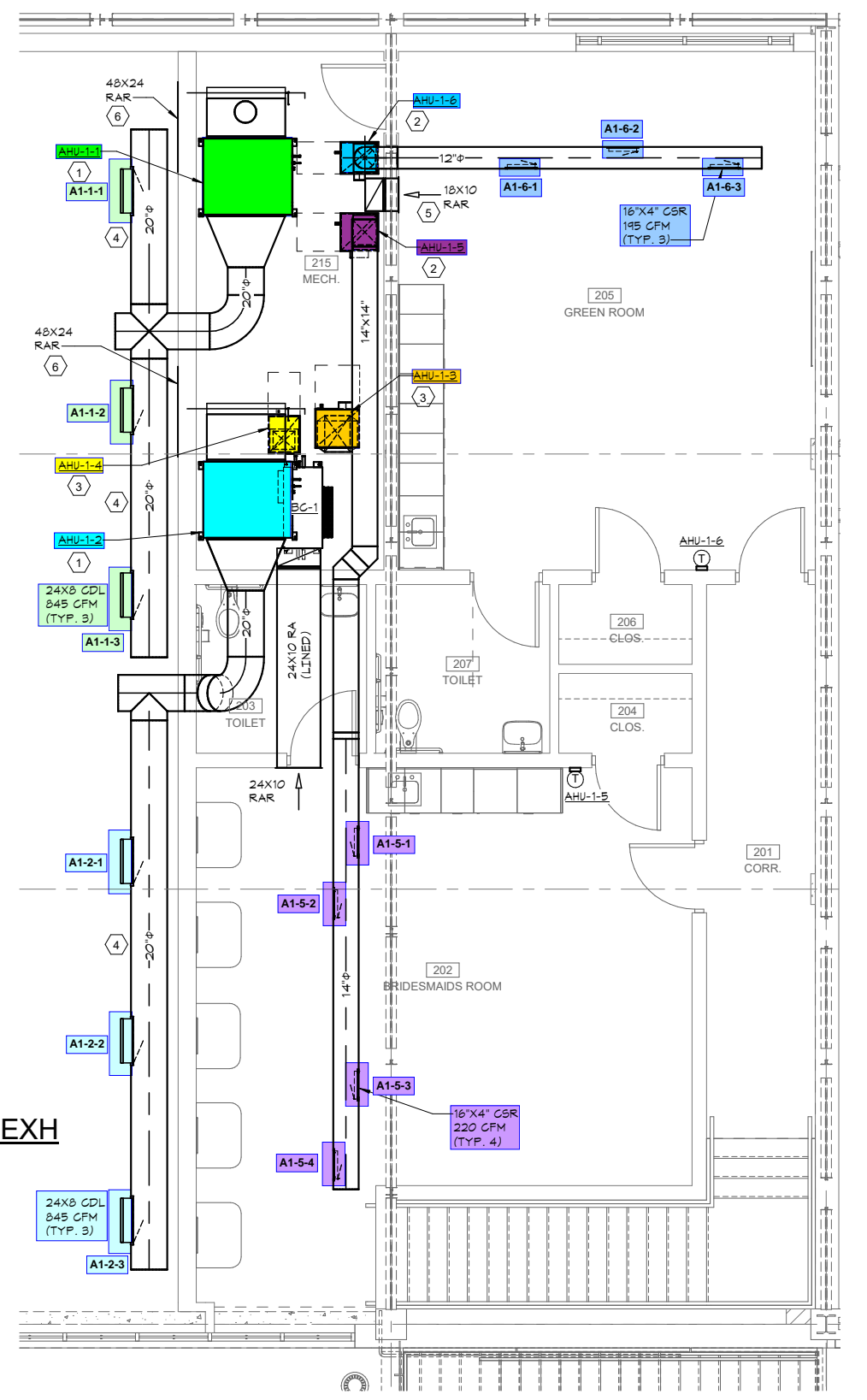




1 FIRST FLOOR SOUTH - ENLARGED MECHANICAL PLAN  
M2.2



2 SECOND FLOOR SOUTH - ENLARGED MECHANICAL PLAN - OA & EXH  
M2.4



1 SECOND FLOOR SOUTH - ENLARGED MECHANICAL PLAN  
M2.4