



## **SUBMITTAL**

**Project**

Blue Ash Rec Center

**Date**

July 26, 2023

Jeff Gries - Habegger Corporation

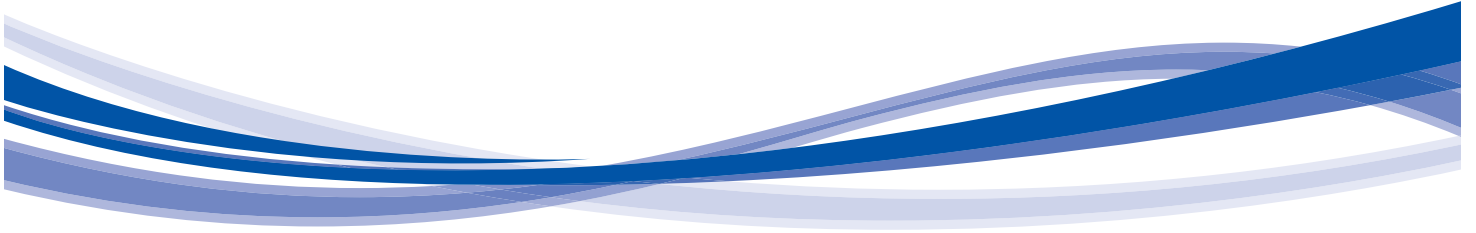


Turn to the experts

## Product Data

# Aero® Indoor and Weathertight Outdoor Air Handlers

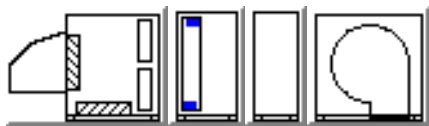
1,500 to 60,500 Nominal CFM



39MN, MW 03-110 Indoor and Weathertight Outdoor Air Handlers

Job Name Blue Ash Rec Center  
Mark for AHU

---



#### Unit Parameters

Aero Outdoor Air Handler  
39MW Size 40W  
Insulation: R-13 Double Wall Sealed Panel  
Exterior Finish: Painted Exterior Panels  
Interior Finish: Galvanized Interior Panels  
Level II Thermal Break  
6 inch tall Base Rail

#### Filter Mixing Box

Oversize Acceptable Selected  
Hood Rear  
Damper: Rear Premium Opposed  
Damper: Bottom Premium Parallel  
2In. Flat Filter  
2" Pleated MERV 13 Filter  
Construction Filters  
Qty (13) 20in. x 25in.  
Pre Filter : 2In. Flat Filter  
2" Pleated MERV 8 Filter  
Qty (13) 20in. x 25in.  
Door Left Side

#### Coil Connection Housing

Double Wall With Hinge(s)  
24in. deep

#### Chilled Water Coil and Plenum

304 Stainless Steel Drain Pan Left Side  
Chilled Water 40.0 sq.ft 8 Row 11 FPI Full Circuit  
Coil Connection Left Side  
1/2 in. Tube Diameter  
AL fins Galv. Casing  
Steel Header  
No Coating

#### VFD Plenum

Length 18 inches  
VFD Located in Plenum  
Door Left Side

Job Name Blue Ash Rec Center  
Mark for AHU

---

### **Draw-Thru Supply Fan**

Rear Inlet

Fan Sled

Forward Curve A FCLA01A25\_20H

840 fanRPM Class II

DownBlast Front Discharge

Left Side Fan Motor Location

Spring Fan Isolation

Motor Shaft Grounding

Motor

25 HP Premium Efficiency ODP 208-230/460 3Ph 60Hz 1800 RPM

Manufacturer - Generic

Frame Size - 284T

Motor Shaft Diameter (in.) - 1.875

Voltage Selected - 460/3/60

Full Load Amps - 31.0

Efficiency - 93.6%

Belt Drive

1.5 Service Factor

Fixed Pitch Drive

Extra Belts

2 or more belts

Variable Frequency Drive

460 Volts 3 Phase 60Hz

Factory Mounted No Bypass

Door Left Side

### **Coil Connection Curb**

14.0in Curb Height

### **Unit Curb**

14.0in Curb Height

### **Configuration Notes**

Overdimensional units require special shipping permits and have additional transportation restrictions which may result in transportation delays and increases to delivery estimates.

A piped connection is within 1.9 inches of coil connection housing inside wall. Verify that ample space is available for all components contained in the coil connection housing.

Drain is located inside Coil Connection Housing. Ensure this is correct.

Discharge duct(s) must be gasketed and screwed directly to the discharge panel of the unit.

Careful consideration must be made for mixing outside and return air streams in VAV applications due to reduced velocity in heating mode.

Consider the use of a blow-thru plenum fan as a mixing device.

### **Weights and Dimensions**

Job Name Blue Ash Rec Center  
Mark for AHU

---

(LxWxH in ft in) 15' 9" x 11' 3" x 7' 9" \*\*

Operating 7753 LB \*\*

Weights and Dimensions are approximate. Weights include base unit weight, coils (wet & dry), fans and fan motors, and other components, but does not include filters, drives and skids. Approximate dimensions are provided primarily for shipping purposes. Shipping skids are not included.

All filter media efficiency ratings are for the filter media only.

# Chilled Water Coil Performance Summary

Project: Blue Ash Rec Center  
 Tag: AHU

Cooling Application's Balance Criteria: Fluid Temp Diff.

Coil Model \_\_\_\_\_  
 Number of Coils \_\_\_\_\_  
 Row / FPI / Circ \_\_\_\_\_  
 Fin Thickness \_\_\_\_\_  
 Fin Type \_\_\_\_\_  
 Face Area Type \_\_\_\_\_  
 Coil Face Area \_\_\_\_\_  
 Face Velocity \_\_\_\_\_  
 Fin-Casing Material \_\_\_\_\_  
 Tube Diameter \_\_\_\_\_  
 Tube spacing: Stf x Str \_\_\_\_\_  
 Tube Wall Thickness \_\_\_\_\_  
 Actual Airflow \_\_\_\_\_  
 Site Altitude \_\_\_\_\_  
 Standard Airflow (adj. to std. dry atmosphere) \_\_\_\_\_  
 Total Cooling Capacity \_\_\_\_\_  
 Sensible Cooling Capacity \_\_\_\_\_  
 Fluid Flow Rate \_\_\_\_\_  
 Fluid Pressure Drop \_\_\_\_\_  
 Fluid Velocity \_\_\_\_\_  
 Entering Fluid Temperature \_\_\_\_\_  
 Leaving Fluid Temperature \_\_\_\_\_  
 Fluid Temperature Rise \_\_\_\_\_  
 Entering Air Dry Bulb \_\_\_\_\_  
 Entering Air Wet Bulb \_\_\_\_\_  
 Entering Air Enthalpy \_\_\_\_\_  
 Leaving Air Dry Bulb \_\_\_\_\_  
 Leaving Air Wet Bulb \_\_\_\_\_  
 Leaving Air Enthalpy \_\_\_\_\_  
 Air Friction \_\_\_\_\_  
 Brine \_\_\_\_\_  
 Brine Concentration \_\_\_\_\_  
 Fouling Factor \_\_\_\_\_

<b>Carrier 28MC</b>	
<b>2</b>	
<b>8 / 11 / FL</b>	
<b>.0042</b>	in
<b>Sine Wave</b>	
<b>Large</b>	
<b>40.00</b>	sqft
<b>525.0</b>	fpm
<b>Al-Galv.</b>	
<b>0.5</b>	in
<b>1.25 x 0.781</b>	in
<b>0.016</b>	in
<b>21000</b>	CFM
<b>0</b>	ft
<b>20249</b>	SCFM
<b>696.72</b>	MBH
<b>488.62</b>	MBH
<b>115.8</b>	gpm
<b>17.9</b>	ft wg
<b>4.1</b>	ft/s
<b>45.00</b>	F
<b>57.03</b>	F
<b>12.0</b>	F
<b>80.00</b>	F
<b>67.00</b>	F
<b>31.50</b>	BTU/lb
<b>57.66</b>	F
<b>56.15</b>	F
<b>23.9</b>	BTU/lb
<b>1.12</b>	in wg
<b>FW</b>	
<b>0</b>	%
<b>0.0</b>	(hr-sqft-F)/BTU



NOTE: Certified in accordance with the AHRI Forced-Circulation Air-Cooling and Air-Heating Coils Certification Program which is based on AHRI Standard 410 within the Range of Standard Rating Conditions listed in Table 1 of the Standard. Certified units may be found in the AHRI Directory ([www.ahrirectory.org](http://www.ahrirectory.org)).

**LEGEND:**

- Stf -- Tube spacing across coil face
- Str -- Tube spacing in direction of airflow

# Unit Acoustics Summary

Project: Blue Ash Rec Center  
Tag: AHU

## Unit Acoustics Sound Power Level:

	Discharge Inlet Casing		
	109	103	102
63 Hz _____	104	98	96
125 Hz _____	103	94	91
250 Hz _____	92	83	82
500 Hz _____	87	78	75
1000 Hz _____	86	78	75
2000 Hz _____	81	73	70
4000 Hz _____	75	67	65
8000 Hz _____			

Sound power levels for 39M units are rated in accordance with AHRI Standard 260.

## Unit Acoustics A-weighted Sound Power Level:

	Discharge Inlet Casing		
	83	77	76
63 Hz _____	88	82	80
125 Hz _____	94	85	82
250 Hz _____	89	80	79
500 Hz _____	87	78	75
1000 Hz _____	87	79	76
2000 Hz _____	82	74	71
4000 Hz _____	74	66	64
8000 Hz _____			

Sound power levels for 39M units are rated in accordance with AHRI Standard 260.

Sound contributed by Supply Fan

# Supply Fan Performance Summary

Project: Blue Ash Rec Center  
 Tag: AHU

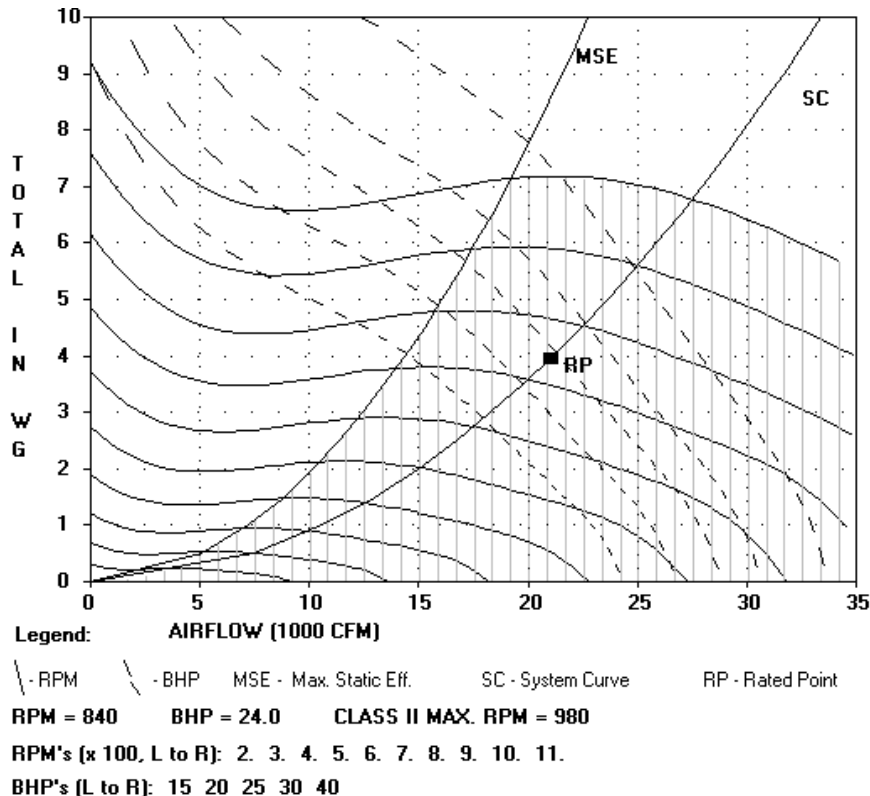
Fan Model	<b>39M4001HFCL-D</b>
Unit Size	<b>40W</b>
Fan Type	<b>FORWARD CURVED</b>
Fan Wheel Diameter	<b>25</b>
Fan Class	<b>II</b>
Fan Application	<b>Draw Thru</b>
Orientation	<b>Horizontal</b>
Actual Airflow, CFM	<b>21000</b>
Site Altitude, ft	<b>0</b>
Upstream Ext. Static, in wg	<b>0.00</b>
Downstream Ext. Static, in wg	<b>1.50</b>
Cooling Coil Static, in wg	<b>1.12</b>
Heating Coil Static, in wg	<b>0.00</b>
Total Accessory Static, in wg	<b>1.33</b>
Total Static Pressure, in wg	<b>3.95</b>
Calculated Fan RPM / Motor RPM	<b>840 / 1800</b>
Class II Max. RPM	<b>980</b>
Static Efficiency (%)	<b>54</b>
Fan BHP	<b>24.0</b>
VFD Setting, Hz	<b>28</b>
Fan Electrical Power, kW	<b>20.7</b>



**Accessories:**

- (1) Flat pleated (2") MERV 8 [0.17]
- (1) Flat Synthetic (2") MERV 13 [0.30]
- (1) Mixing or Exhaust Box [0.10]
- (1) Rear Inlet Hood [0.76]

Certified by the AHRI Central Station Air-Handling Unit (AHU) Certification Program, which is based on AHRI Standard 430/431. AHRI certified units are subject to rigorous and continuous testing, have performance ratings independently measured and are third-party verified. Certified units may be found in the AHRI Directory at [www.ahridirectory.org](http://www.ahridirectory.org)

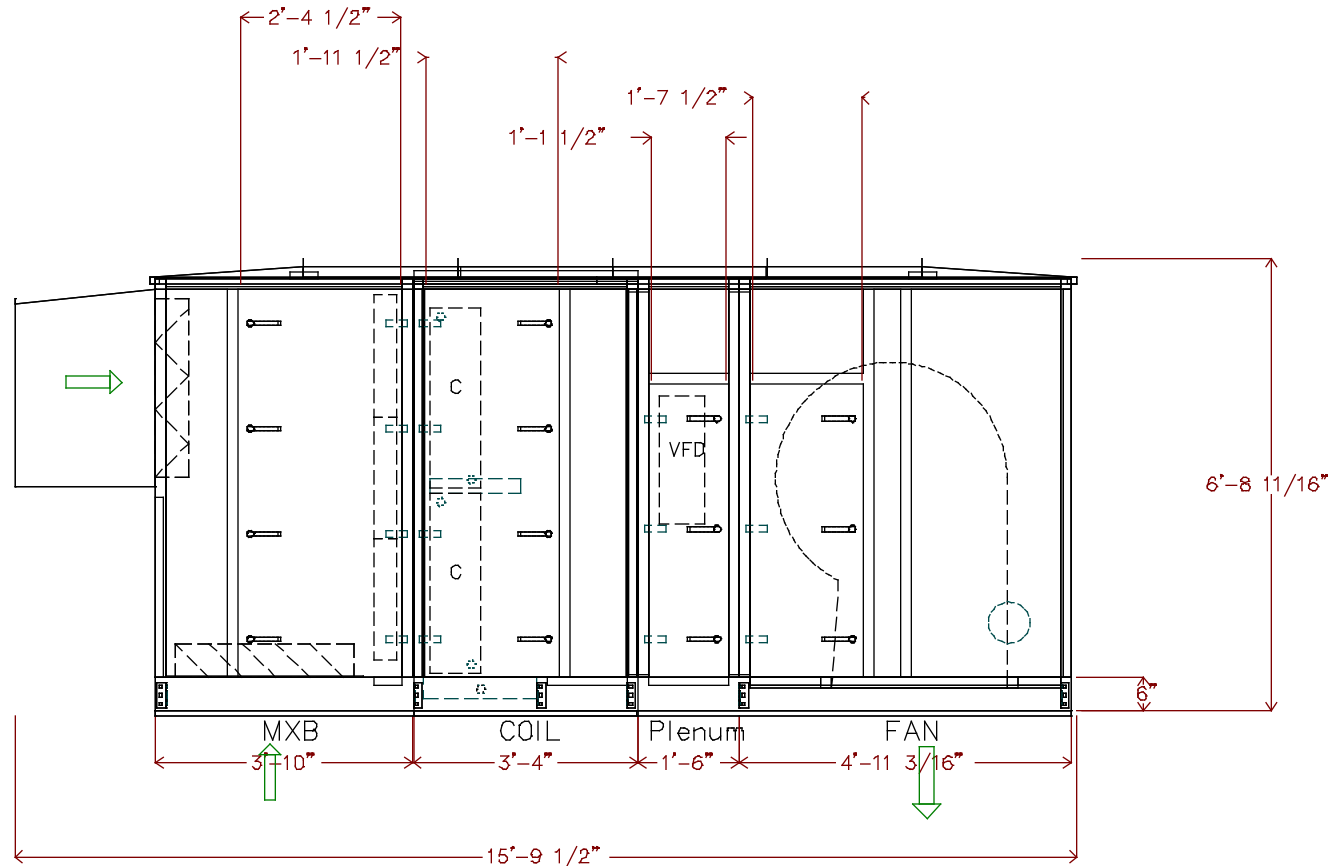


Unit width: 11'-3 5/8" (plus lifting lugs)  
 2In. Flat Filter  
 Qty (13) 20in. x 25in.  
 Pre Filter : 2In. Flat Filter  
 Qty (13) 20in. x 25in.  
 Chilled Water 8 Row 11 FPI Full Circuit (qty. 2)

Draw-Thru Supply Fan  
 25 HP Premium Efficiency ODP 208-230/460 3Ph 60Hz 1800 RPM  
 Operating weight: 7753.0 lbs.  
 Upstream Corner Weight (each): 2063.0 lbs.  
 Downstream Corner Weight (each): 1814.0 lbs.



Split	Airway Length	Weight (lbs.)
(Split 1)	13'-7 1/2"	7753
(Split 2)	Coil Connection Housing	670



THIS DOCUMENT IS THE PROPERTY OF CARRIER CORPORATION AND IS DELIVERED UPON THE EXPRESS CONDITION THAT THE CONTENTS WILL NOT BE DISCLOSED OR USED WITHOUT CARRIER CORPORATION'S WRITTEN CONSENT

SUBMISSION OF THESE DRAWINGS OR DOCUMENTS DOES NOT CONSTITUTE PART PERFORMANCE OR ACCEPTANCE OF CONTRACT

39M W

DATE 7/26/2023	AHUBuilder v6.69a	39M Central Station Air-Handler, Size 40W Blue Ash Rec Center: AHU Assembly Drawing	REVISION  Side View
-------------------	----------------------	---	---------------------------

Unit viewed from right side of side elevation view.  
 Unit length: 15'-9 1/2"  
 2ln. Flat Filter  
 Qty (13) 20in. x 25in.  
 Pre Filter : 2ln. Flat Filter  
 Qty (13) 20in. x 25in.  
 Chilled Water 8 Row 11 FPI Full Circuit (qty. 2)

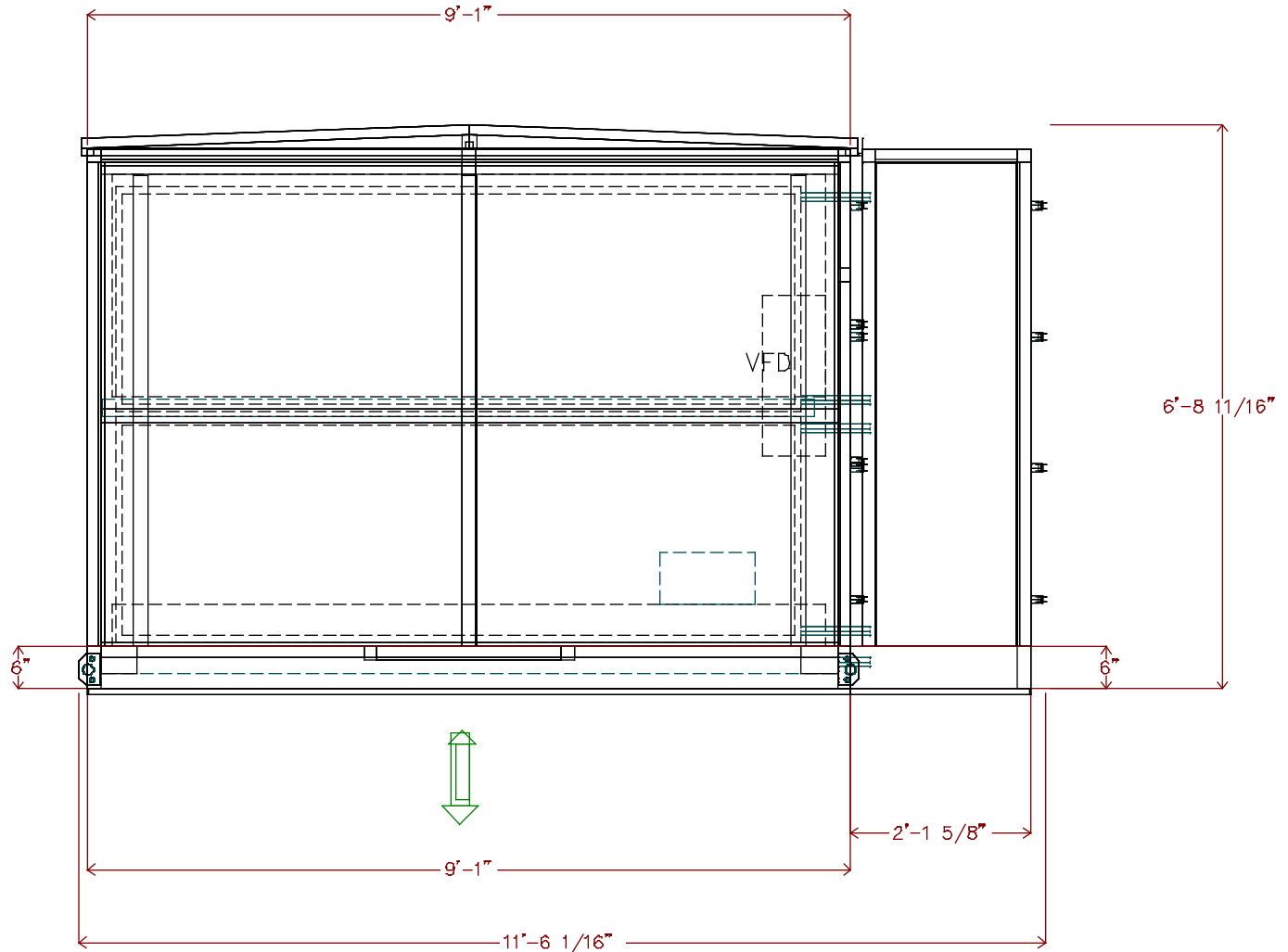
Draw-Thru Supply Fan  
 25 HP Premium Efficiency ODP 208-230/460 3Ph 60Hz 1800 RPM  
 Operating weight: 7753.0 lbs.  
 Upstream Corner Weight (each): 2063.0 lbs.  
 Downstream Corner Weight (each): 1814.0 lbs.



THIS DOCUMENT IS THE PROPERTY OF CARRIER CORPORATION AND IS DELIVERED UPON THE EXPRESS CONDITION THAT THE CONTENTS WILL NOT BE DISCLOSED OR USED WITHOUT CARRIER CORPORATION'S WRITTEN CONSENT

SUBMISSION OF THESE DRAWINGS OR DOCUMENTS DOES NOT CONSTITUTE PART PERFORMANCE OR ACCEPTANCE OF CONTRACT

39M W



DATE 7/26/2023	AHUBuilder v6.69a	39M Central Station Air-Handler, Size 40W Blue Ash Rec Center: AHU Assembly Drawing	REVISION  End View
-------------------	----------------------	---	--------------------------

Unit height: 7'-9 3/16"

2In. Flat Filter

Qty (13) 20in. x 25in.

Pre Filter : 2In. Flat Filter

Qty (13) 20in. x 25in.

Chilled Water 8 Row 11 FPI Full Circuit (qty. 2)

Draw-Thru Supply Fan

25 HP Premium Efficiency ODP 208-230/460 3Ph 60Hz 1800 RPM

Operating weight: 7753.0 lbs.

Upstream Corner Weight (each): 2063.0 lbs.

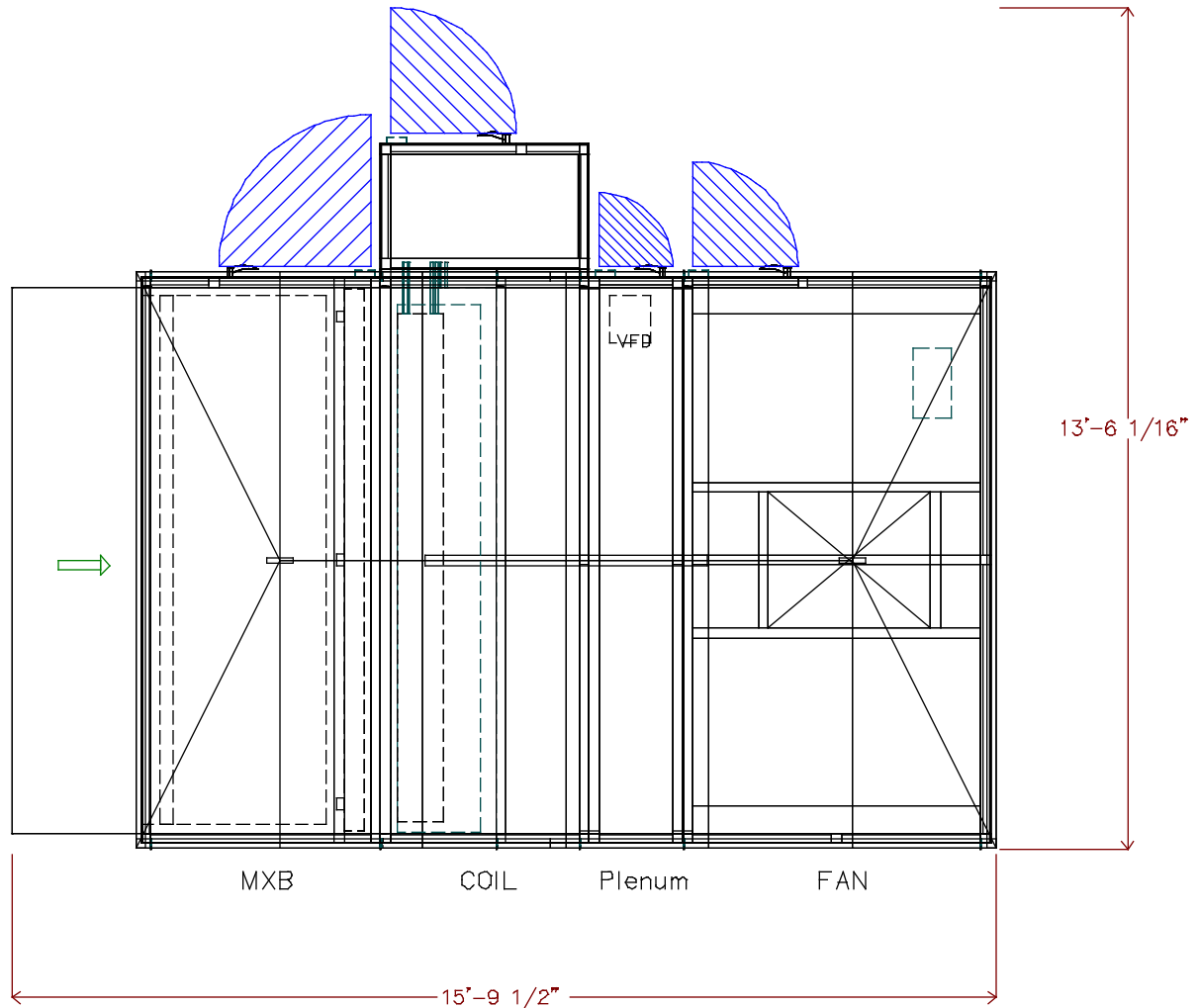
Downstream Corner Weight (each): 1814.0 lbs.



THIS DOCUMENT IS THE PROPERTY OF CARRIER CORPORATION AND IS DELIVERED UPON THE EXPRESS CONDITION THAT THE CONTENTS WILL NOT BE DISCLOSED OR USED WITHOUT CARRIER CORPORATION'S WRITTEN CONSENT

SUBMISSION OF THESE DRAWINGS OR DOCUMENTS DOES NOT CONSTITUTE PART PERFORMANCE OR ACCEPTANCE OF CONTRACT

39M W



DATE  
7/26/2023

AHUBuilder  
v6.69a

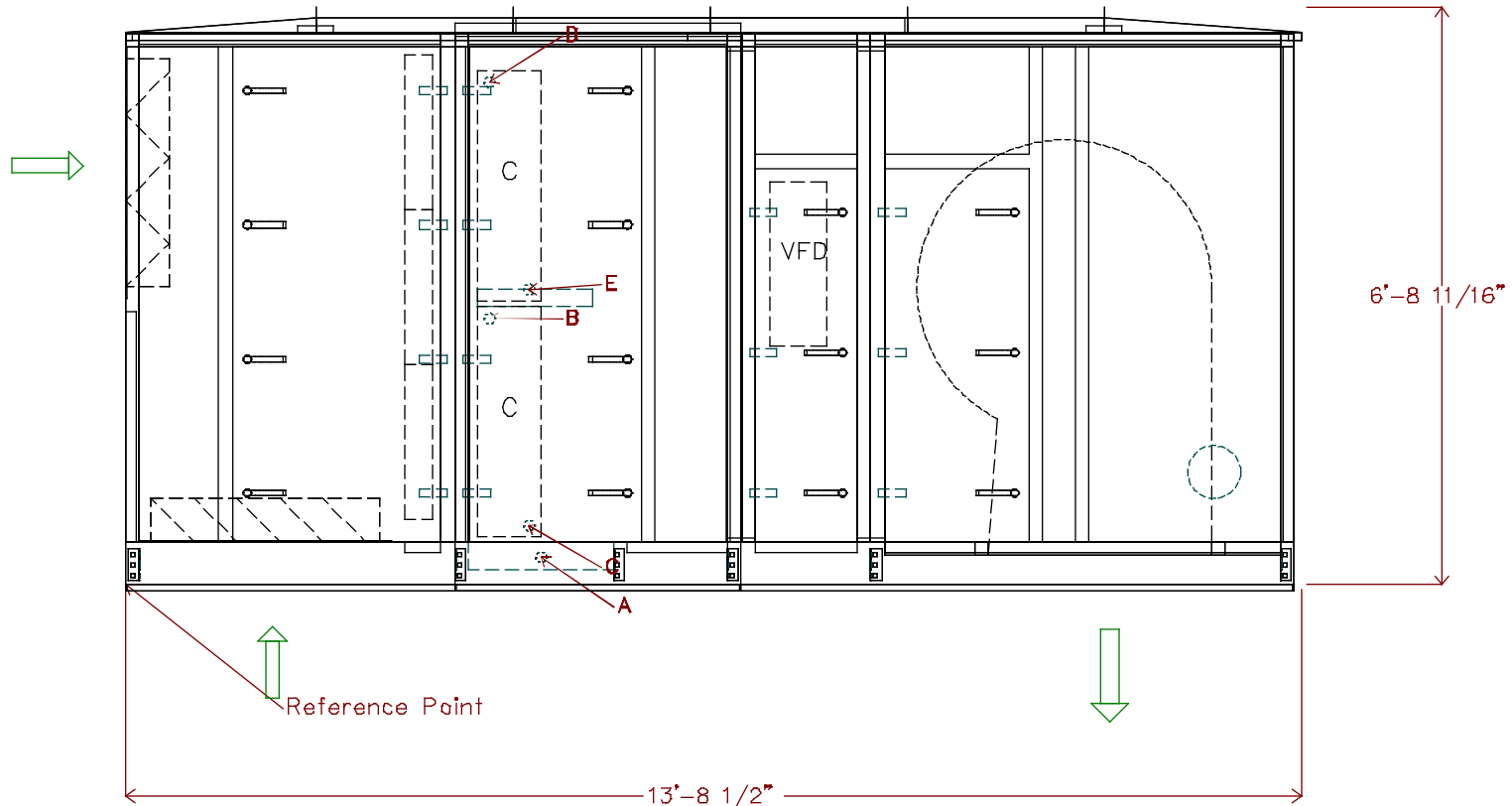
39M Central Station Air-Handler, Size 40W  
Blue Ash Rec Center: AHU  
Assembly Drawing

REVISION  
Top View

Chilled Water 8 Row 11 FPI Full Circuit (qty. 2)



Pipe	x	y	diameter	Usage
A	4'-10 1/16"	3 13/16"	1 1/2"	DrainPan
B	4'-2 7/8"	3'-1 3/16"	1 1/2"	CW Outlet
C	4'-8 3/8"	8 3/16"	1 1/2"	CW Inlet
D	4'-2 7/8"	5'-10 1/4"	1 1/2"	CW Outlet
E	4'-8 3/8"	3'-5 1/4"	1 1/2"	CW Inlet



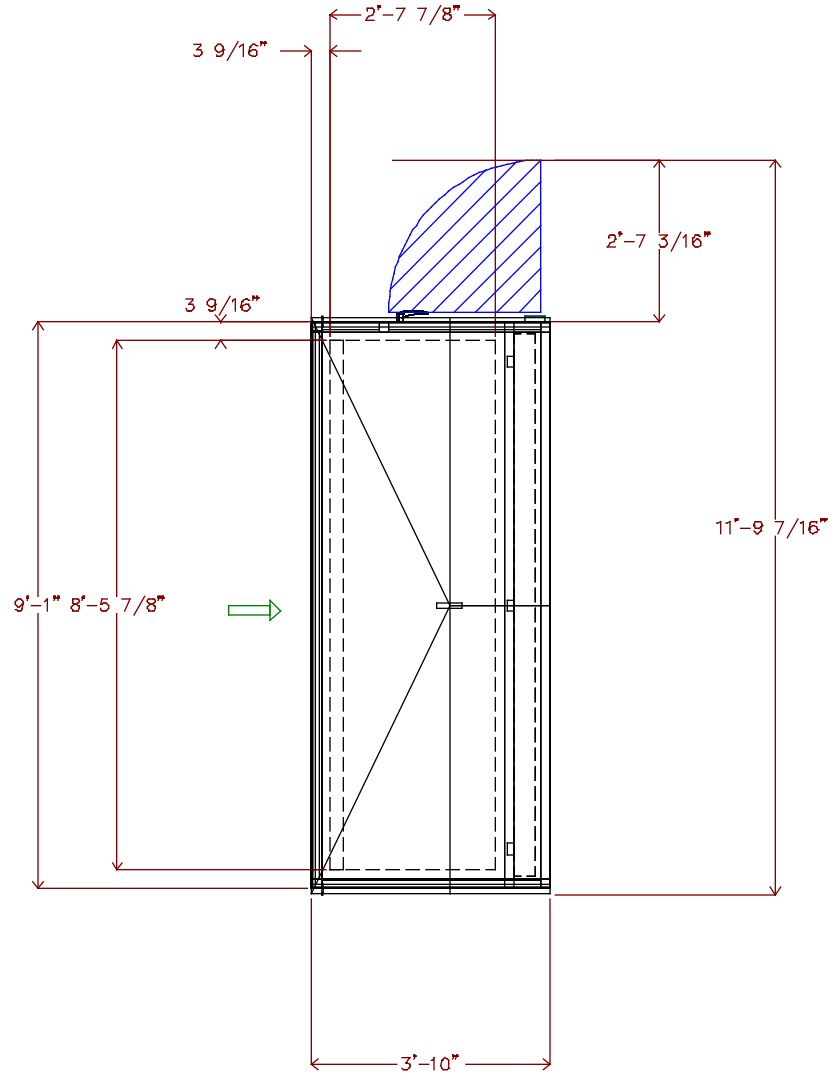
THIS DOCUMENT IS THE PROPERTY OF CARRIER CORPORATION AND IS DELIVERED UPON THE EXPRESS CONDITION THAT THE CONTENTS WILL NOT BE DISCLOSED OR USED WITHOUT CARRIER CORPORATION'S WRITTEN CONSENT

SUBMISSION OF THESE DRAWINGS OR DOCUMENTS DOES NOT CONSTITUTE PART PERFORMANCE OR ACCEPTANCE OF CONTRACT

39M W

DATE 7/26/2023	AHUBuilder v6.69a	39M Central Station Air-Handler, Size 40W Blue Ash Rec Center: AHU Assembly Drawing	REVISION  Side View
-------------------	----------------------	---	---------------------------

2In. Flat Filter  
 Qty (13) 20in. x 25in.  
 Pre Filter : 2In. Flat Filter  
 Qty (13) 20in. x 25in.



THIS DOCUMENT IS THE PROPERTY OF CARRIER CORPORATION AND IS DELIVERED UPON THE EXPRESS CONDITION THAT THE CONTENTS WILL NOT BE DISCLOSED OR USED WITHOUT CARRIER CORPORATION'S WRITTEN CONSENT

SUBMISSION OF THESE DRAWINGS OR DOCUMENTS DOES NOT CONSTITUTE PART PERFORMANCE OR ACCEPTANCE OF CONTRACT

39M W

DATE 7/26/2023	AHUBuilder v6.69a	39M Central Station Air-Handler, Size 40W Blue Ash Rec Center: AHU Filter Mixing Box	REVISION  Top View
-------------------	----------------------	--	--------------------------

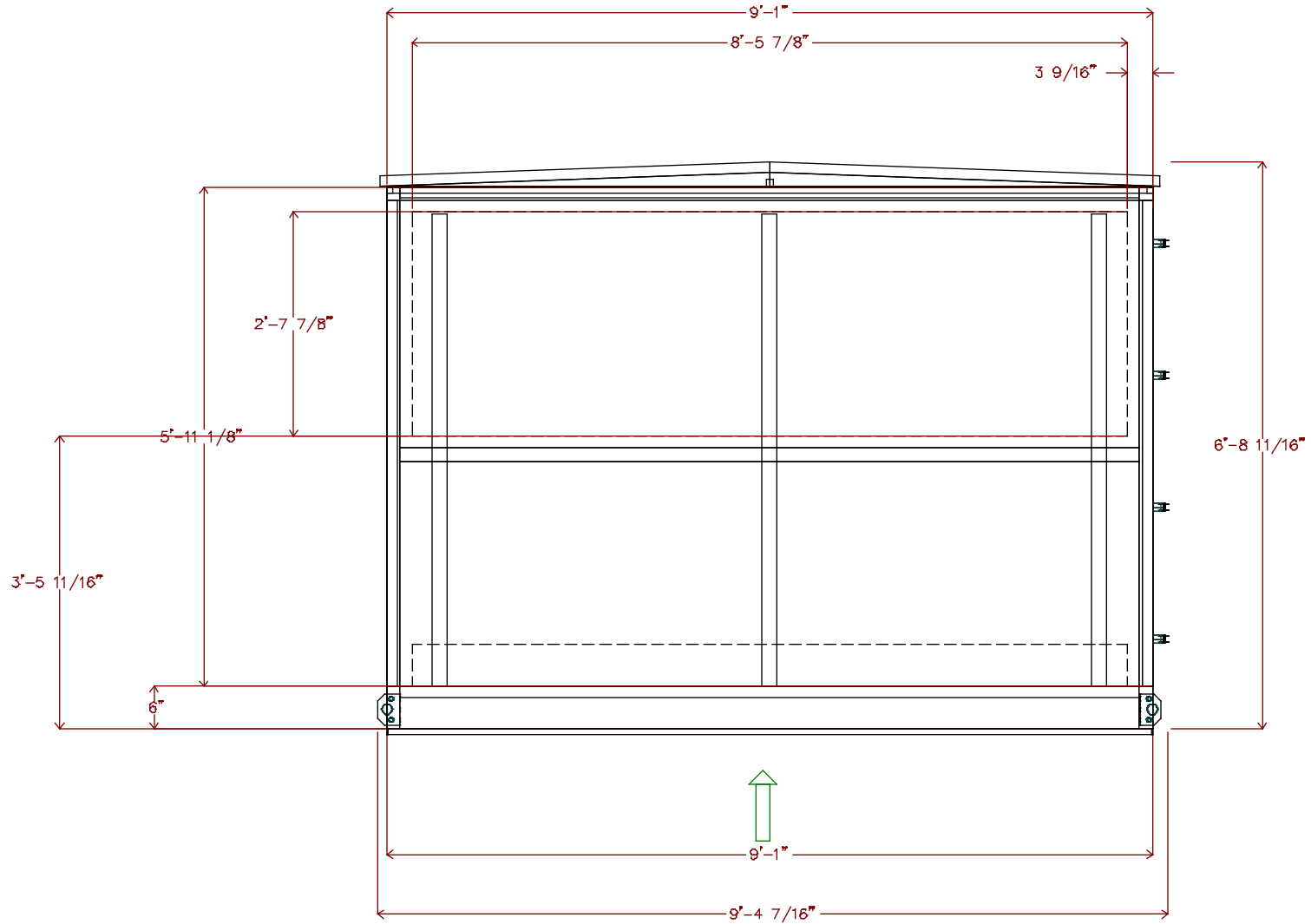
Unit viewed from right side of side elevation view.

2in. Flat Filter

Qty (13) 20in. x 25in.

Pre Filter : 2in. Flat Filter

Qty (13) 20in. x 25in.



THIS DOCUMENT IS THE PROPERTY OF CARRIER CORPORATION AND IS DELIVERED UPON THE EXPRESS CONDITION THAT THE CONTENTS WILL NOT BE DISCLOSED OR USED WITHOUT CARRIER CORPORATION'S WRITTEN CONSENT

SUBMISSION OF THESE DRAWINGS OR DOCUMENTS DOES NOT CONSTITUTE PART PERFORMANCE OR ACCEPTANCE OF CONTRACT

39M W

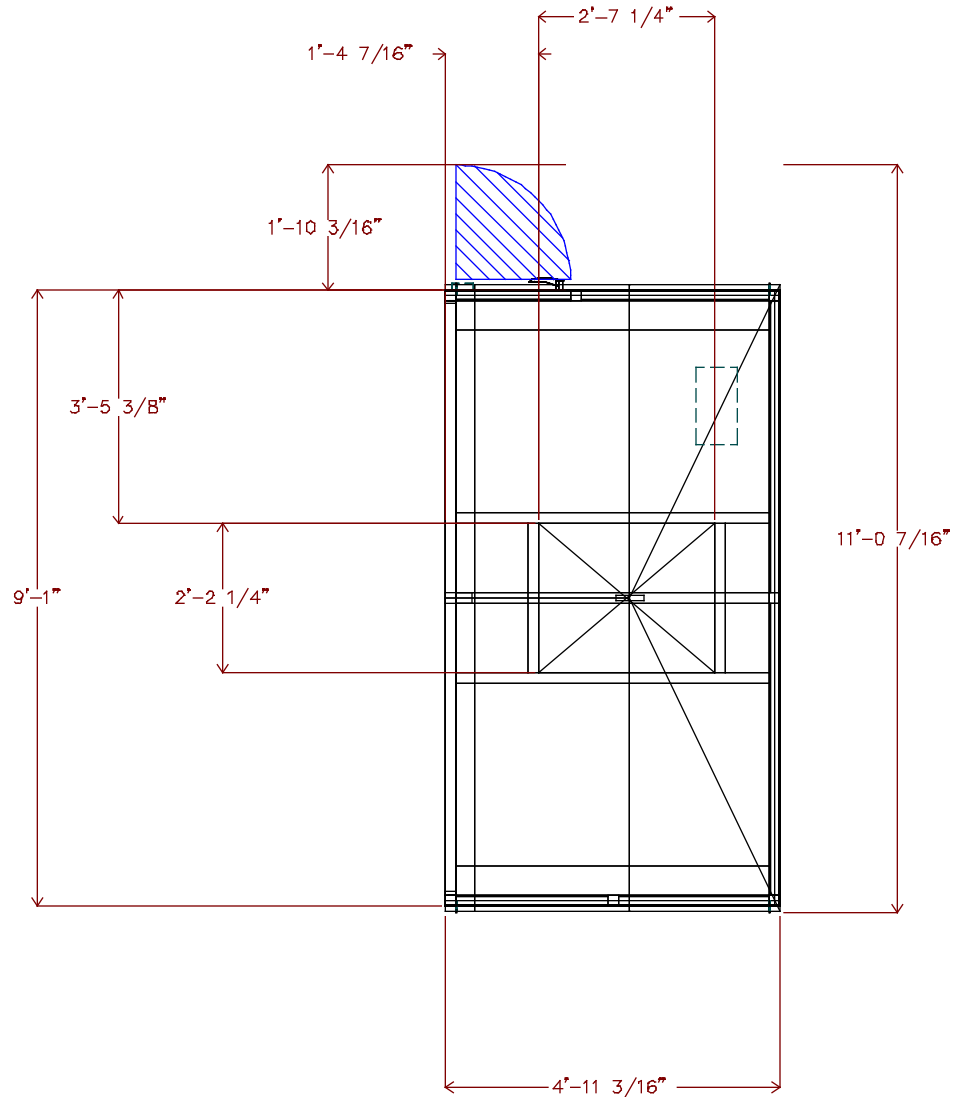
DATE  
7/26/2023

AHUBuilder  
v6.69a

39M Central Station Air-Handler, Size 40W  
Blue Ash Rec Center: AHU  
Filter Mixing Box

REVISION  
End View

Draw-Thru Supply Fan  
 25 HP Premium Efficiency ODP 208-230/460 3Ph 60Hz 1800 RPM



THIS DOCUMENT IS THE PROPERTY OF CARRIER CORPORATION AND IS DELIVERED UPON THE EXPRESS CONDITION THAT THE CONTENTS WILL NOT BE DISCLOSED OR USED WITHOUT CARRIER CORPORATION'S WRITTEN CONSENT

SUBMISSION OF THESE DRAWINGS OR DOCUMENTS DOES NOT CONSTITUTE PART PERFORMANCE OR ACCEPTANCE OF CONTRACT

39M W

DATE  
7/26/2023

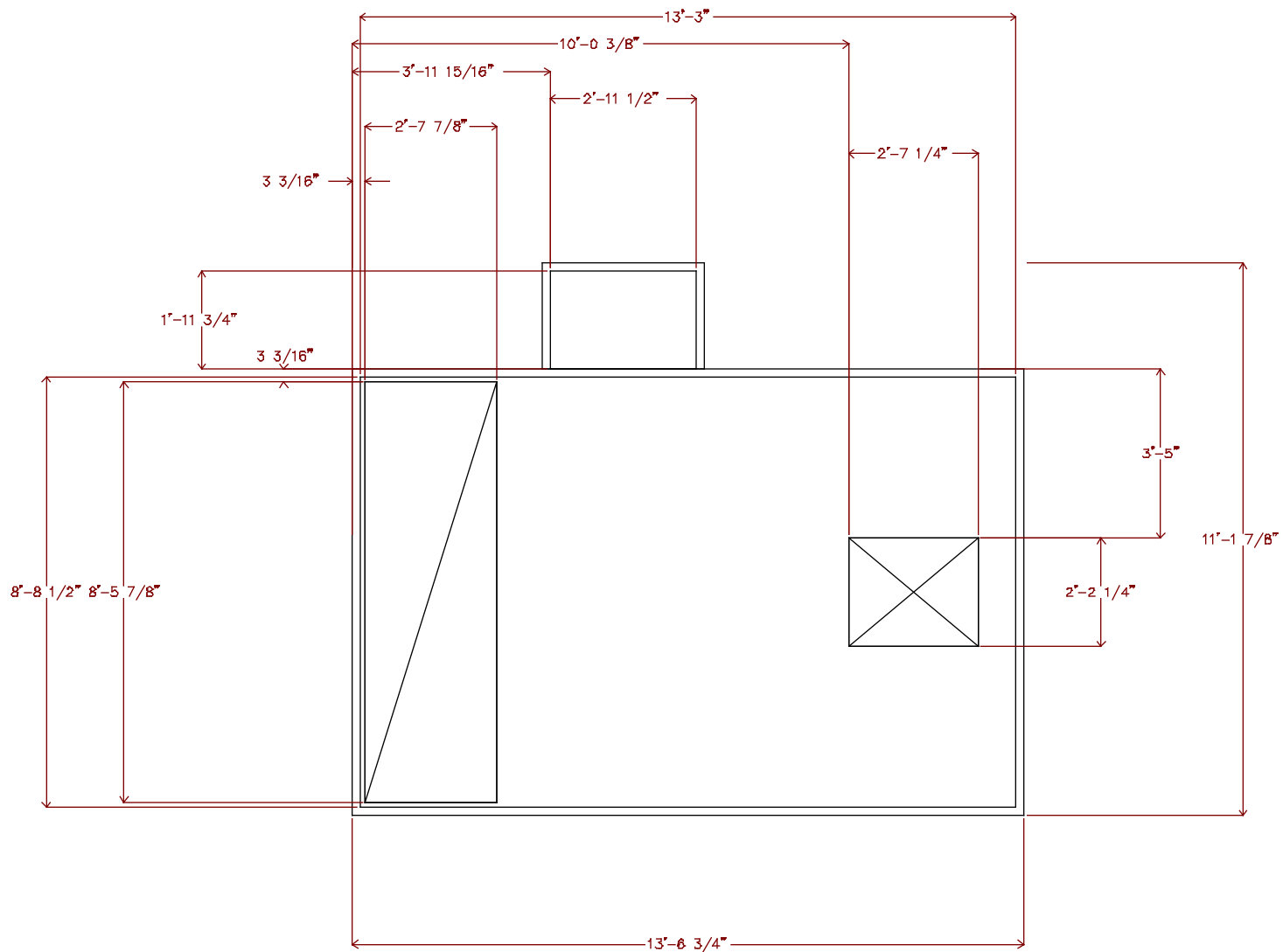
AHUBuilder  
v6.69a

39M Central Station Air-Handler, Size 40W  
 Blue Ash Rec Center: AHU  
 Draw-Thru Supply Fan

REVISION  
Top View

Operating weight: 372.0 lbs.  
 Upstream Corner Weight (each): 96.0 lbs.  
 Downstream Corner Weight (each): 90.0 lbs.

A curb adapter will be furnished. The curb adapter drawing will be provided when complete



THIS DOCUMENT IS THE PROPERTY OF CARRIER CORPORATION AND IS DELIVERED UPON THE EXPRESS CONDITION THAT THE CONTENTS WILL NOT BE DISCLOSED OR USED WITHOUT CARRIER CORPORATION'S WRITTEN CONSENT

SUBMISSION OF THESE DRAWINGS OR DOCUMENTS DOES NOT CONSTITUTE PART PERFORMANCE OR ACCEPTANCE OF CONTRACT

39M W

DATE  
7/26/2023

AHUBuilder  
v6.69a

39M Central Station Air-Handler, Size 40W  
 Blue Ash Rec Center: AHU  
 Ahu Curb

REVISION  
Top View

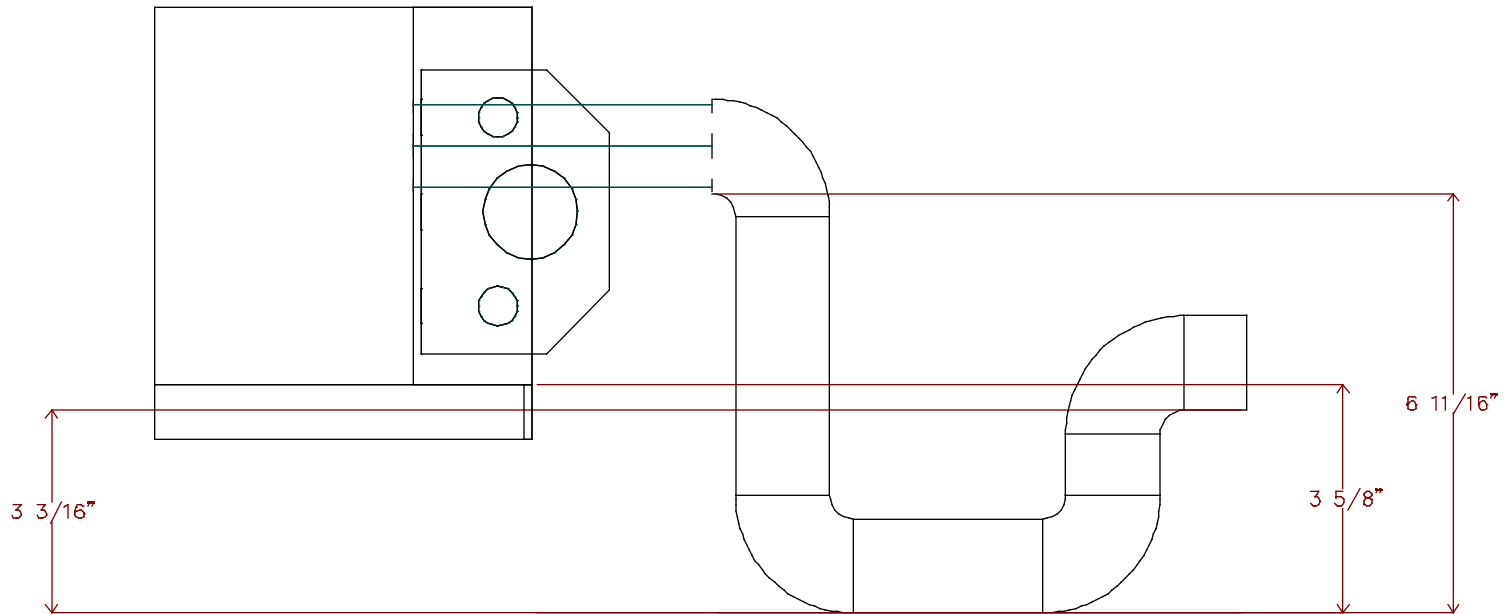


THIS DOCUMENT IS THE PROPERTY OF CARRIER CORPORATION AND IS DELIVERED UPON THE EXPRESS CONDITION THAT THE CONTENTS WILL NOT BE DISCLOSED OR USED WITHOUT CARRIER CORPORATION'S WRITTEN CONSENT

SUBMISSION OF THESE DRAWINGS OR DOCUMENTS DOES NOT CONSTITUTE PART PERFORMANCE OR ACCEPTANCE OF CONTRACT

39M W

# DRAW-THRU



DATE  
7/26/2023

AHUBuilder  
v6.69a

39M Central Station Air-Handler, Size 40W  
Blue Ash Rec Center: AHU  
Condensate Trap Dimensions

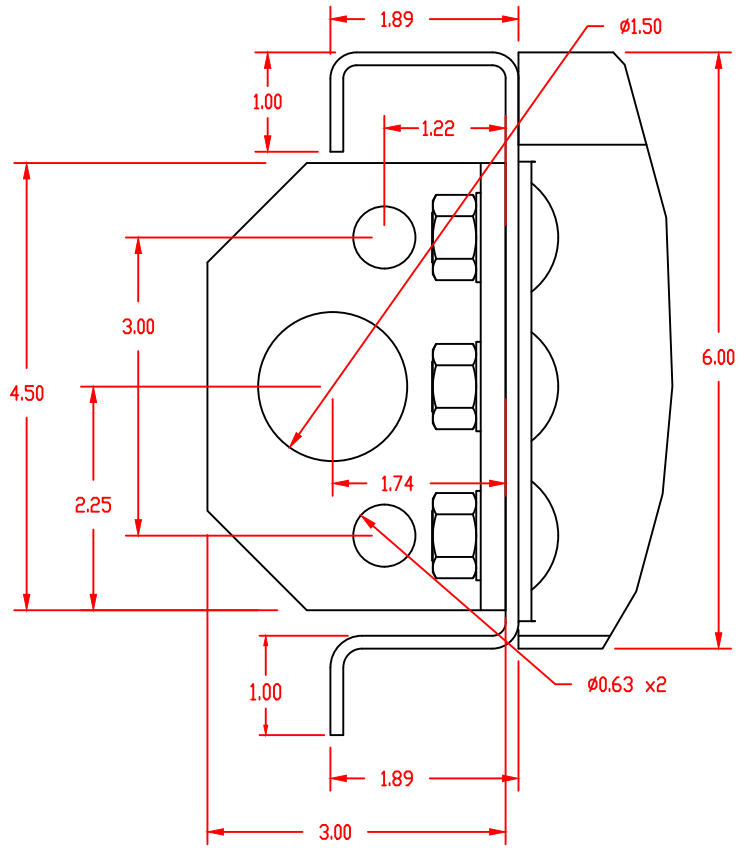
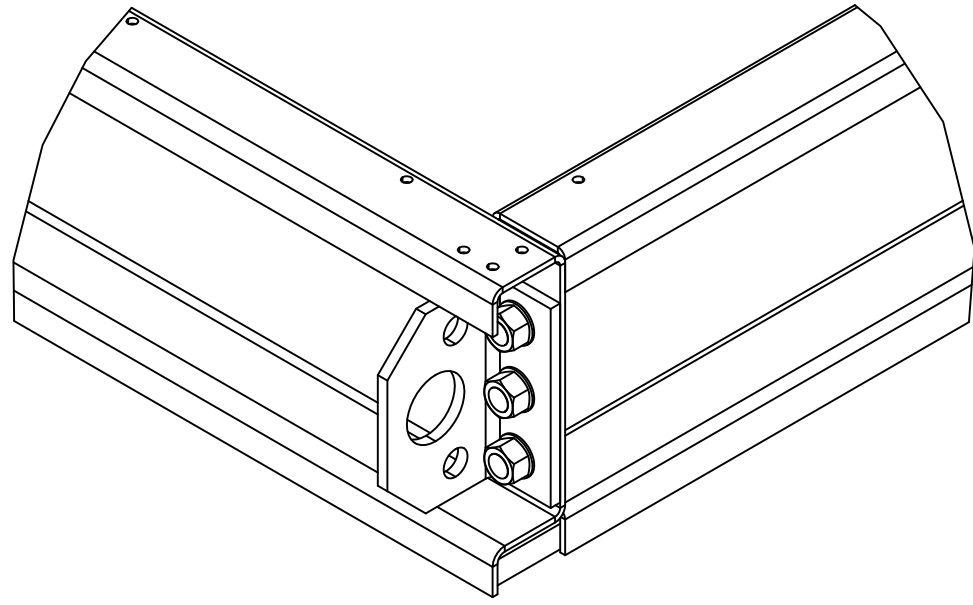
REVISION  
End View



THIS DOCUMENT IS THE PROPERTY OF CARRIER CORPORATION AND IS DELIVERED UPON THE EXPRESS CONDITION THAT THE CONTENTS WILL NOT BE DISCLOSED OR USED WITHOUT CARRIER CORPORATION'S WRITTEN CONSENT

SUBMISSION OF THESE DRAWINGS OR DOCUMENTS DOES NOT CONSTITUTE PART PERFORMANCE OR ACCEPTANCE OF CONTRACT

39M W



DATE  
7/26/2023

AHUBuilder  
v6.69o

39M Central Station Air-Handler, Size: 03 - 110  
6" Baserail and Lifting Lug Detail

REVISION

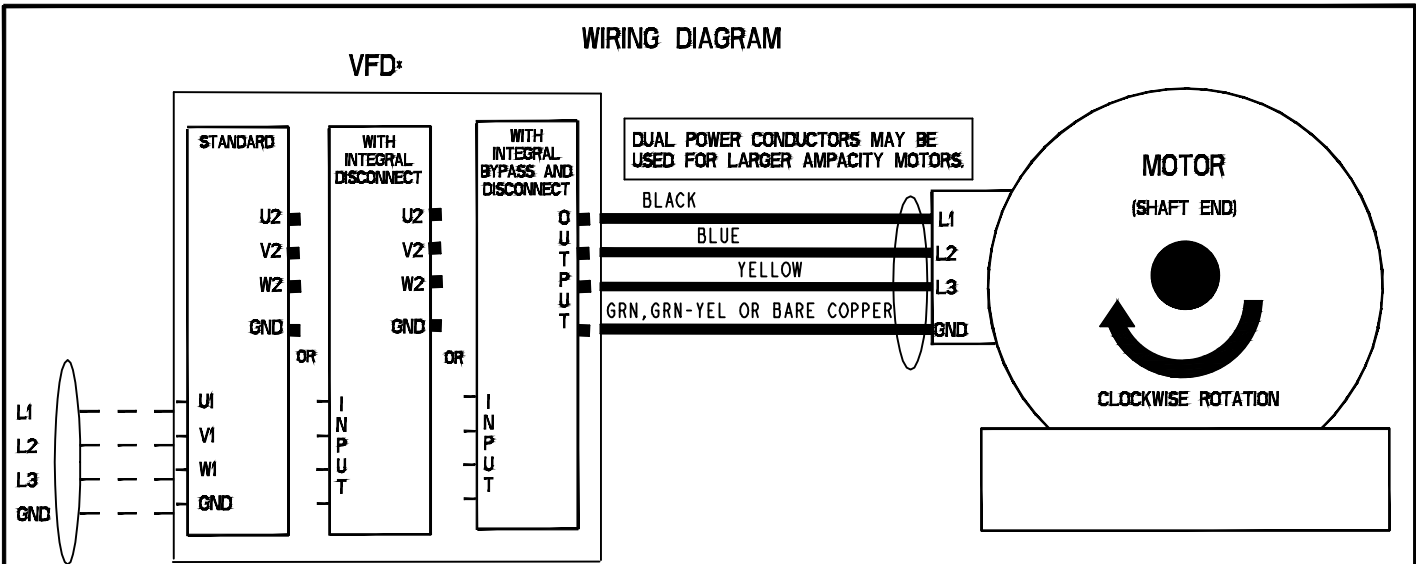


THIS DOCUMENT IS THE PROPERTY OF CARRIER CORPORATION AND IS DELIVERED UPON THE EXPRESS CONDITION THAT THE CONTENTS WILL NOT BE DISCLOSED OR USED WITHOUT CARRIER CORPORATION'S WRITTEN CONSENT

PERFORMANCE OR ACCEPTANCE OF CONTRACT DOCUMENTS DOES NOT CONSTITUTE PART OF THESE DRAWINGS OR

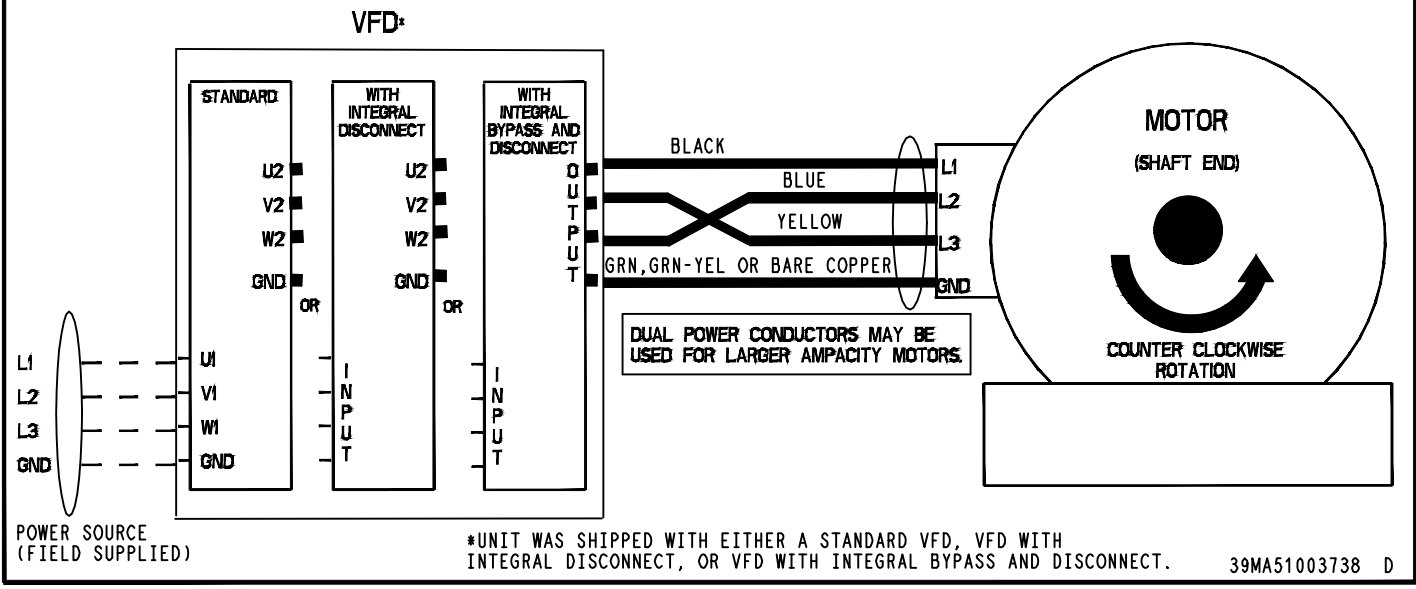
39M

WIRING DIAGRAM



POWER SOURCE (FIELD SUPPLIED)

- NOTES: 1) MOTOR CONNECTIONS L4 THRU L9 NOT SHOWN. CONNECT PER MOTOR MANUFACTURERS RECOMMENDATIONS AND SPECIFIED OPERATING VOLTAGE.  
 2) FIELD WIRING TO VFD MUST BE IN ACCORDANCE WITH "NEC" CODE AND "LOCAL" CODE REQUIREMENTS. REFER TO INSTALLATION INSTRUCTIONS FOR MINIMUM WIRE GAUGE REQUIREMENTS AND RECOMMENDED MAXIMUM CIRCUIT BREAKER (MCCB).  
 3) ALL FACTORY WIRING IS RATED FOR 90°C [194°F], TYPE THHN. REPLACE WITH SAME SIZE AND TYPE AS ORIGINALLY SUPPLIED



POWER SOURCE (FIELD SUPPLIED)

\*UNIT WAS SHIPPED WITH EITHER A STANDARD VFD, VFD WITH INTEGRAL DISCONNECT, OR VFD WITH INTEGRAL BYPASS AND DISCONNECT. 39MA51003738 D

Component wiring for reference only. When components are factory installed, wiring will be factory installed unless otherwise noted. When components are provided by the factory for field installation, wiring is not included or installed.

DATE  
7/26/2023

AHUBuilder  
v6.69o

39M Central Station Air-Handler  
Three Phase VFD Wiring Detail

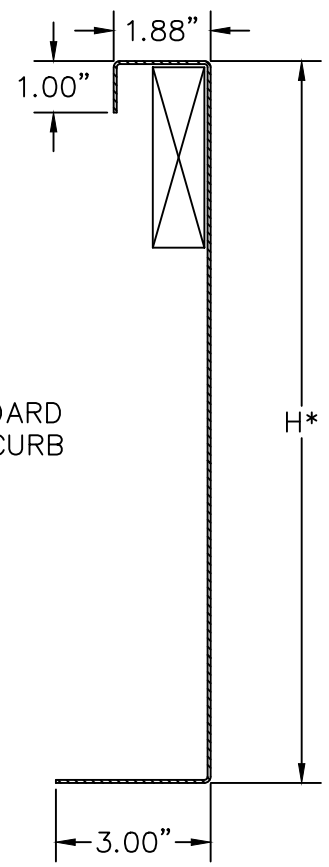
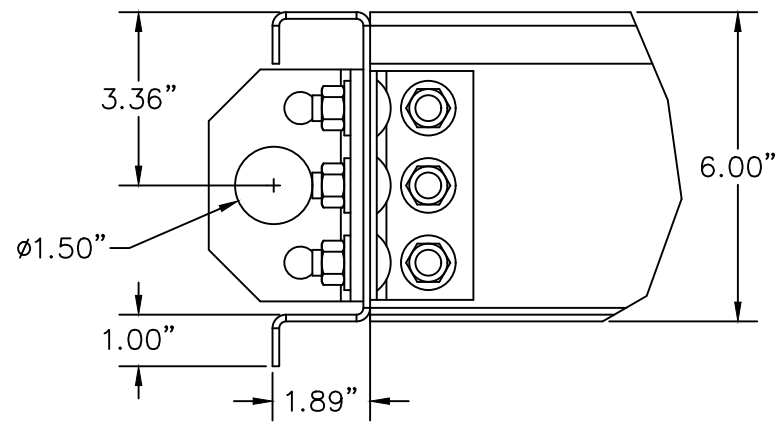
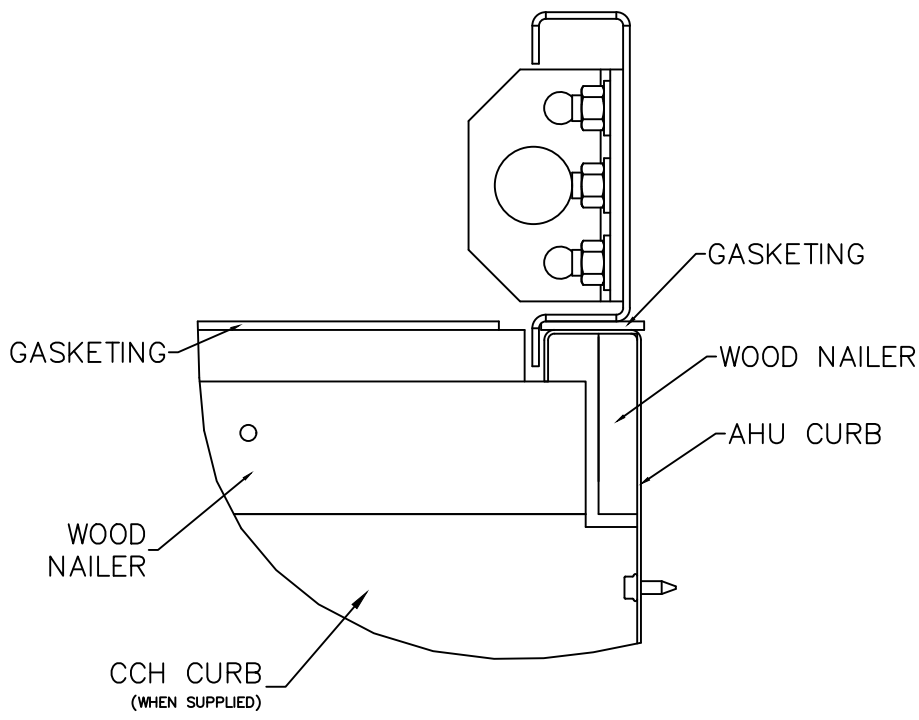
REVISION



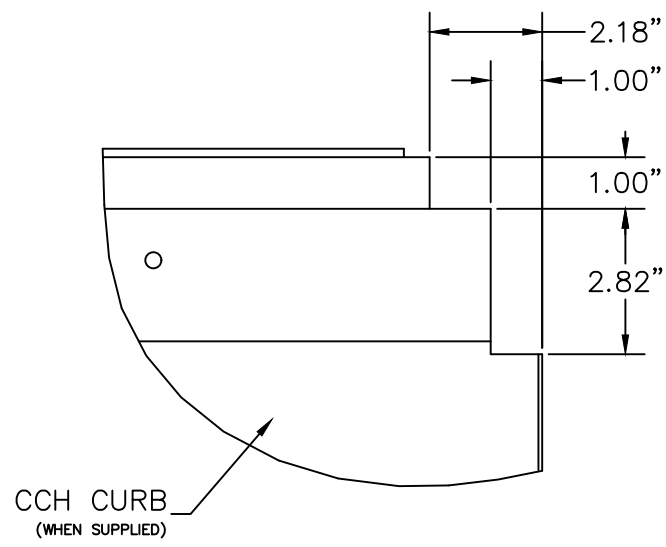
THIS DOCUMENT IS THE PROPERTY OF CARRIER CORPORATION AND IS DELIVERED UPON THE EXPRESS CONDITION THAT THE CONTENTS WILL NOT BE DISCLOSED OR USED WITHOUT CARRIER CORPORATION'S WRITTEN CONSENT

SUBMISSION OF THESE DRAWINGS OR DOCUMENTS DOES NOT CONSTITUTE PART PERFORMANCE OR ACCEPTANCE OF CONTRACT

39MW



\* 14" OR 24" STANDARD HEIGHT FLAT ROOF CURB



DATE  
7/26/2023

AHUBuilder  
v6.69o

39M Central Station Air-Handler, Size: 03 - 110  
Curb, Baserail and Lifting Lug Detail

REVISION

## VFD Submittal

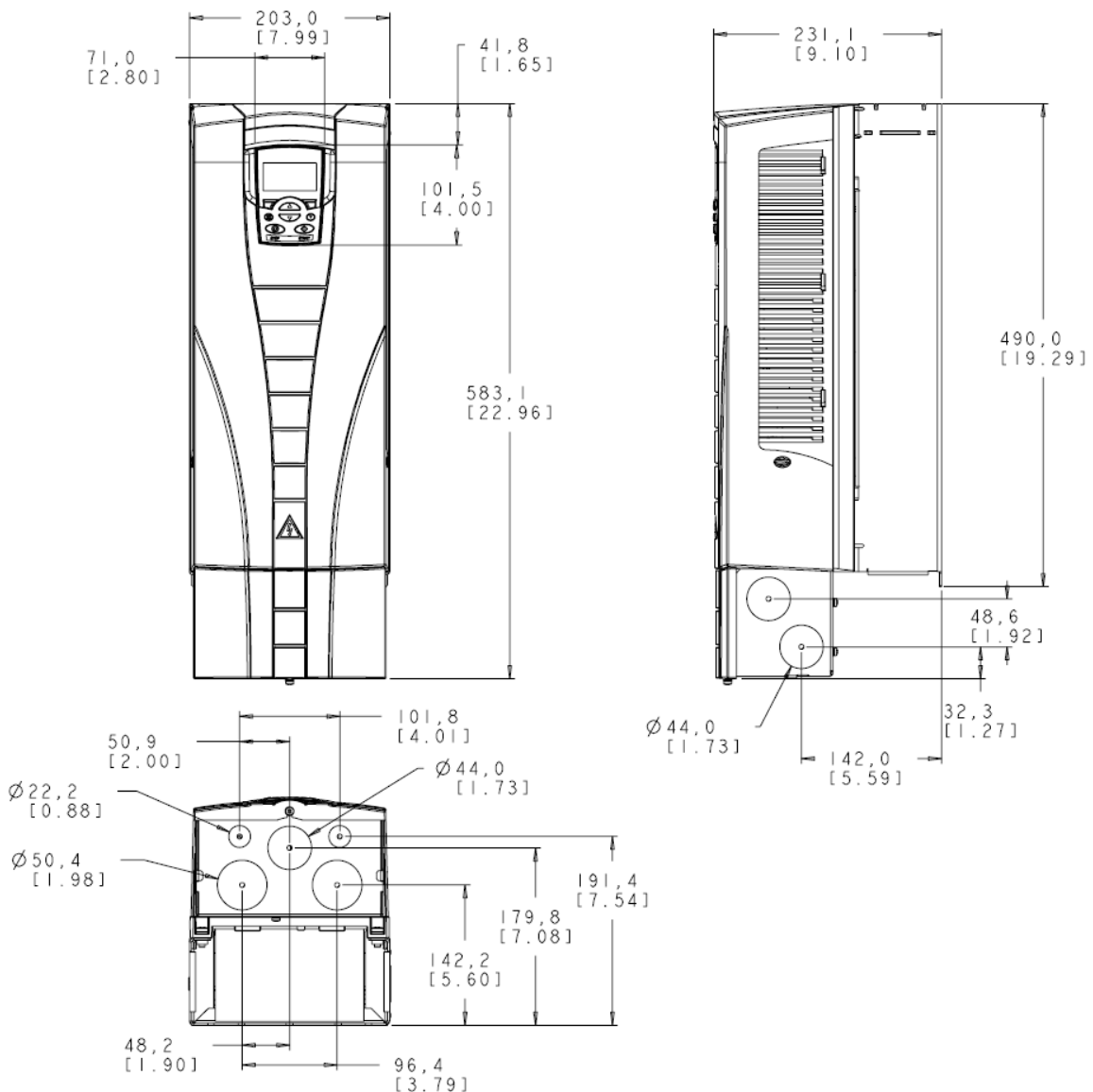
Project: Blue Ash Rec Center  
 Unit Tag: AHU

Manufacturer Part Number .....	ACH550-UH-031A-4
Voltage .....	460 Volts 3 Phase 60Hz
Frame Size .....	R3
Application Horsepower .....	25 HP
Maximum Continuous Output (A) .....	31
UL Class T Fuse Amps .....	40

R3

### General Dimensions

Height (in.) .....	23
Width (in.) .....	8
Depth (in.) .....	9.1
Shipping Weight (lbs.) .....	35



Note: Unbracketed dimensions listed in millimeters [Bracketed dimensions listed in inches]

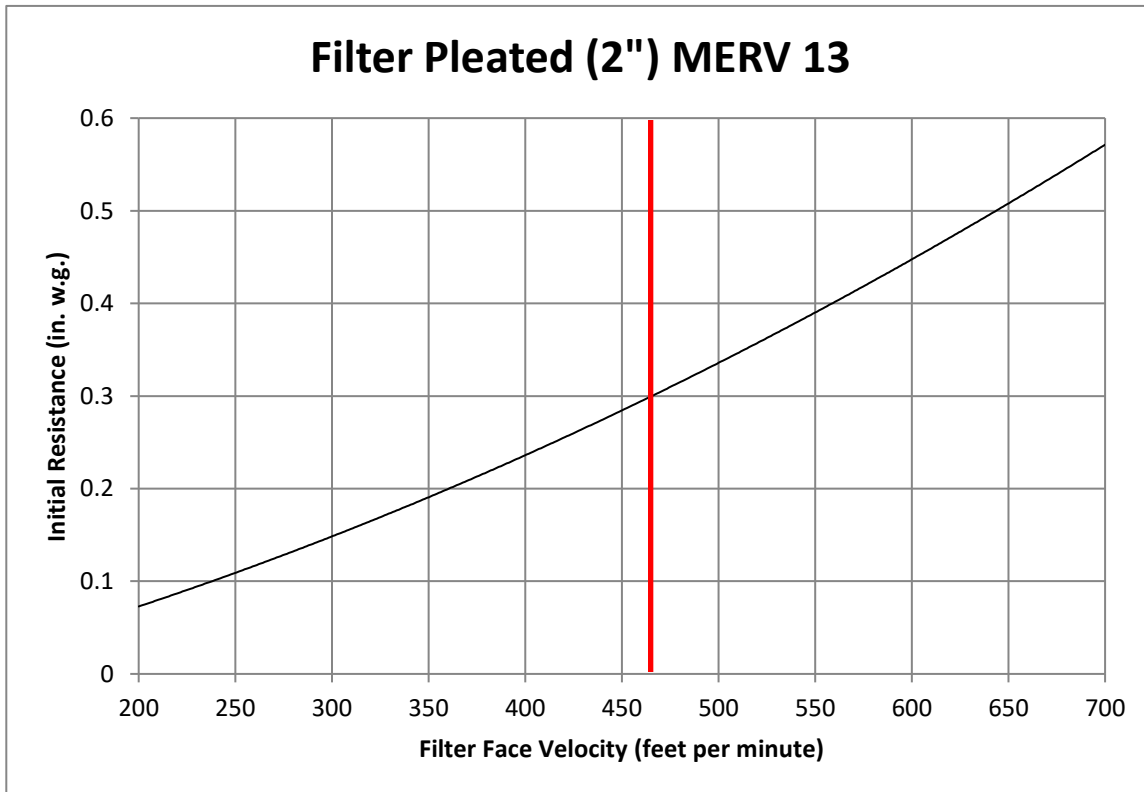
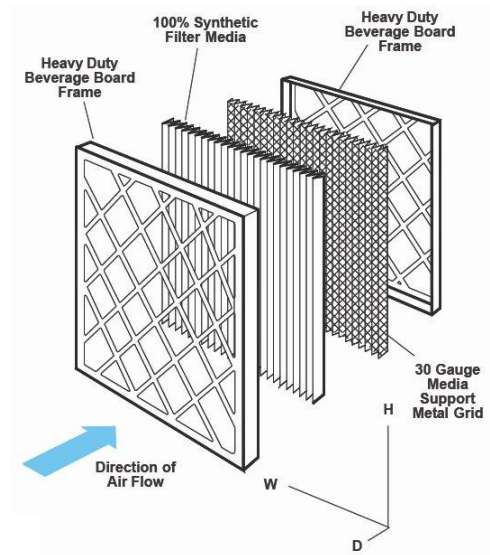
## Air Filter Submittal

Project: Blue Ash Rec Center  
 Unit Tag: AHU

Carrier Part Number .....	31K2C0000001320254
Kit Description .....	Filter Kit
Unit Airflow, CFM .....	21000
Filter Velocity, FPM .....	465
Filter Sizes and Quantities .....	Qty (13) 20in. x 25in.

### DFpro MERV 13 Pleated Filter

The 100% synthetic graduated density media is continuously bonded to a 30 gauge galvanized, corrosion resistant, expanded metal support grid with an effective open area of 96%. The media is resistant to a wide range of chemicals, does not absorb moisture and will not support microbial growth. The controlled pleat spacing maximizes surface area and dust holding capacity and is bonded to the enclosure frame to prevent dust bypass. The enclosure frame is constructed of high wet strength moisture resistant beverage board. The diagonal support members of the frame are bonded to the entering and exiting apexes of each pleat to prevent pleat collapse and filter bowing.



## Air Filter Submittal

Project: Blue Ash Rec Center  
 Unit Tag: AHU

Carrier Part Number .....	31K2B0000001320254
Kit Description .....	Filter Kit
Unit Airflow, CFM .....	21000
Filter Velocity, FPM .....	465
Filter Sizes and Quantities .....	Qty (13) 20in. x 25in.

### DFpro MERV 8 Pleated Filter

The 100% synthetic graduated density media is continuously bonded to a 30 gauge galvanized, corrosion resistant, expanded metal support grid with an effective open area of 96%. The media is resistant to a wide range of chemicals, does not absorb moisture and will not support microbial growth. The controlled pleat spacing maximizes surface area and dust holding capacity and is bonded to the enclosure frame to prevent dust bypass. The enclosure frame is constructed of high wet strength moisture resistant beverage board. The diagonal support members of the frame are bonded to the entering and exiting apexes of each pleat to prevent pleat collapse and filter bowing.

