

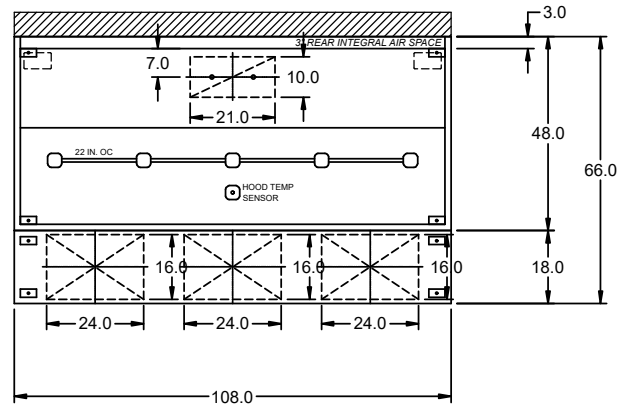
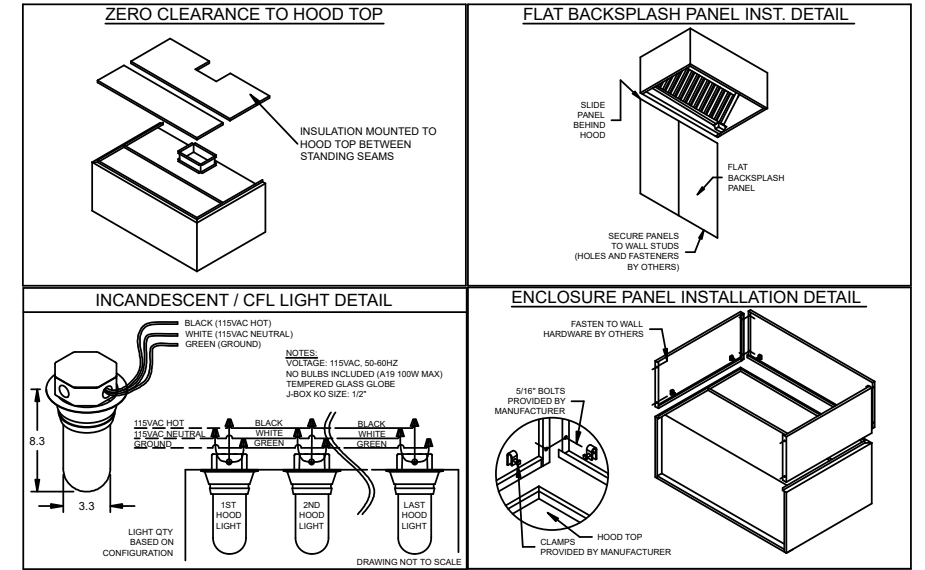
HOOD INFORMATION																	
HOOD NO.	MARK	MODEL	HOOD DIMENSIONS (IN.)			HOOD CONSTR.	COOKING LOAD / DUTY RATING	EXHAUST					SUPPLY		HANGING WEIGHT LBS.	SECTION LOCATION	
			LENGTH	WIDTH	HEIGHT			TOTAL CFM	COLLAR(S)			MUA CFM	AC CFM				
1	KH 1	XXEW-108-S	108	48	FRT 12 BACK 24	430 SS WHERE EXPOSED	HEAVY	2200	10	21		2200	0.575	1980		360	SINGLE

HOOD INFORMATION																	
HOOD NO.	MARK	LIGHTING DETAILS				GREASE FILTRATION DETAILS				UTILITY CABINET(S)							
		FIXTURE TYPE	BULB / LAMP INFO	QTY	FOOT CANDLES	TYPE / MODEL	MATERIAL	QTY	SIZE (IN.)	LOCATION	FIRE SYSTEM	SIZE	MODEL	CONTROLS			
1	KH 1	INCANDESCENT (GLOBE)	100W A19 (BULBS NOT INCL.)	5	54.19	X-TRACTOR (SPARK ARRESTOR INCL.)	STAINLESS STEEL	3	16	20							

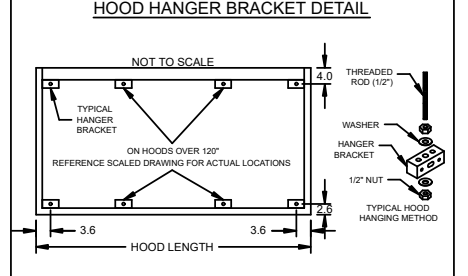
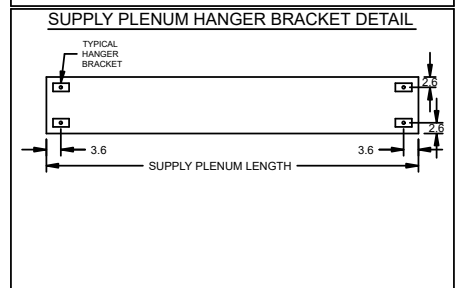
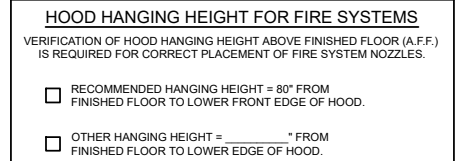
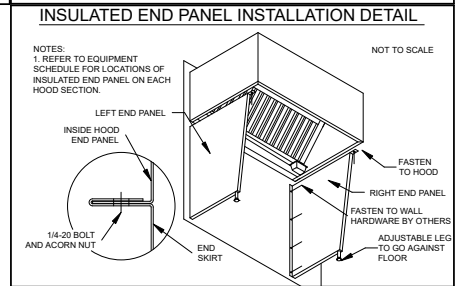
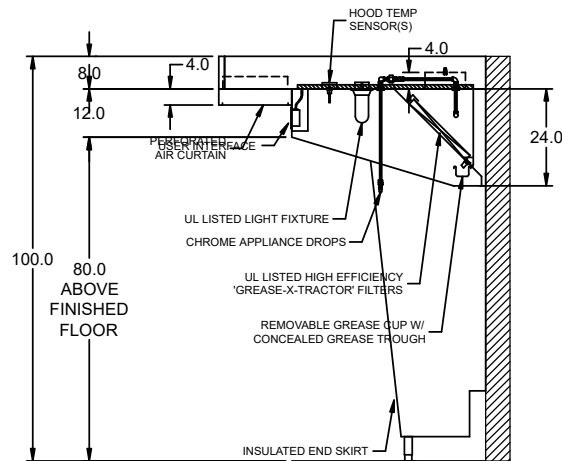
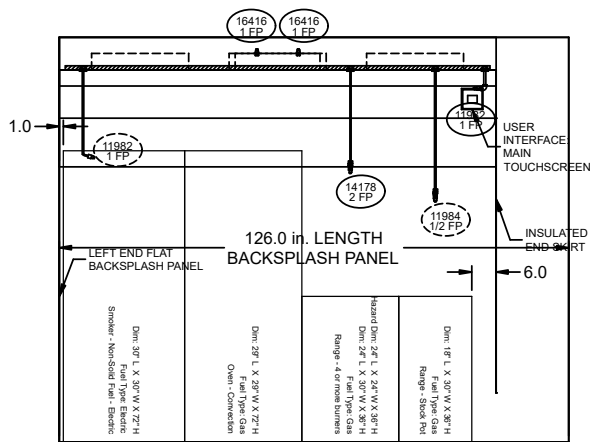
SUPPLY PLENUM INFORMATION																			
HOOD NO.	MARK	POS.	TYPE	SIZE (IN.)			INSULATED	DAMPER(S)	LED LIGHT(S)		TOTAL CFM	TOTAL S.P.	COLLARS						
				L	W	H			SUPPLIED	QTY			TYPE	MOUNTING	QTY	W	L	DIA.	CFM
1	KH 1	FRONT	ASP	108	18	4	NO	NO	NO		1980	0.01	MUA	LOOSE	3	16	24	660	248

HOOD OPTIONS

- UL 710 LISTED W/ OUT EXHAUST FIRE DAMPER - UL #R25625
- HOOD TOP INSULATED FOR ZERO CLEARANCE TO COMBUSTIBLES
- BACK INTEGRAL AIR SPACE - 3 IN WIDE
- 8 IN HIGH CEILING ENCLOSURES - FRONT RIGHT - FIELD INSTALLED
- SHIPPED LOOSE EXHAUST COLLAR(S)
- RIGHT INSULD END PNL W/ ADJ LEG 67.94 IN HIGH 27.00 IN TOP WIDTH 21.0 IN BOTTOM WIDTH
- HOOD FRONT IS TAPERED (FOR LOW CEILING APPLICATIONS)
- BACKSPLASH 100.00 IN HIGH 126.00 IN LONG
- LEFT SIDESPLASH 100.00 IN HIGH 66.00 IN LONG
- PERFORMANCE ENHANCING LIP (PEL) TECHNOLOGY
- STANDING SEAM CONSTRUCTION FOR SUPERIOR STRENGTH



FIRE (PIPING/DROPS/NOZZLES/ETC.) SUBJECT TO CHANGE. AS-BUILT DRAWINGS CAN BE PROVIDED AT TIME OF ORDER AND INCLUDED WITH PRODUCT SHIPMENT



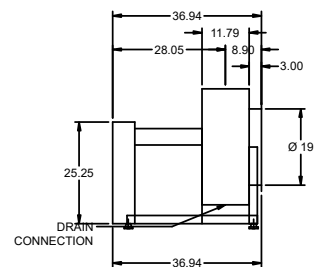
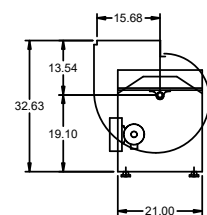
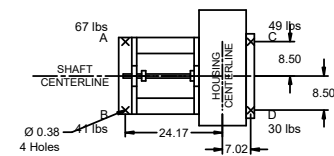
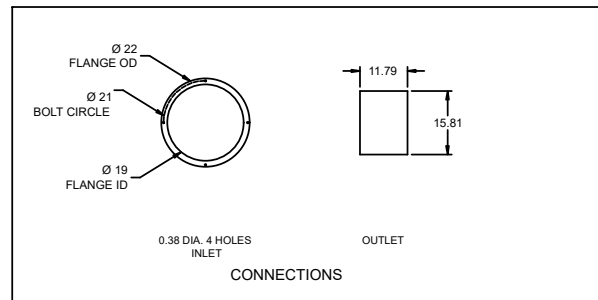
Universal Single Width Fan

MARK INFORMATION		FAN INFORMATION								SOUND INFORMATION				MOTOR INFORMATION										
MARK	QTY	MODEL	DRIVE TYPE	VOLUME (CFM)	EXTERNAL SP (IN. WG)	TOTAL EXTERNAL SP (IN. WG)	FAN SPEED (RPM)	OUTLET VELOCITY (FT/MIN)	FEI	TOTAL WEIGHT (LB)	INLET dBA	INLET SONES	INLET SONES (SPHERICAL)	OUTLET dBA	OUTLET SONES	OPERATING POWER (HP)	MOTOR SIZE (HP)	FEP INPUT POWER (KW)	ENCLOSURE	VOLTAGE	CYCLE	PHASE	EC MOTOR	NEC FLA*
EF 1	1	XUEF-15	Belt	2,200	1	1	1,409	1,699.57	1.03	189	65.39	14.07	0	66.81	16.61	0.63	1	0	OP	230	60	1	0	8

*NEC FLA - Based on table 430.250 or 430.248 of National Electrical Code 2020. Actual motor FLA may vary for sizing thermal overload, consult factory"

EF 1 : SELECTED OPTIONS AND ACCESSORIES

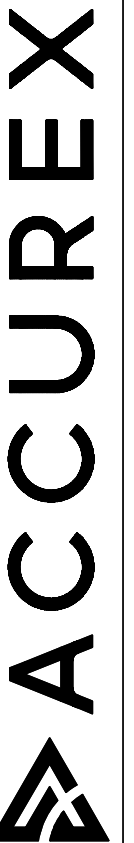
- Finish - Coated
- Coating - Permatorc, Concrete Gray-RAL 7023, Mill Finish on Aluminum Components
- Direct Mount Isolators, Isolator-Rubber Mount, 0.50 Inch, Base Coating - N/A
- Rotation - CW
- Bearings - L10 Standard Life, 1000k hours at OperatingPoint
- Discharge Position - UB
- UL/cUL-762 Outdoor - Power Vent. for Restaurant Exhaust Appliances
- Polished Steel Shaft
- Access Door - Bolted
- Drain Connection - 1 inch threaded male
- Extended Lube Lines - Nylon
- Inlet Flange, Punched
- Outlet Connection, Slip Fit
- Weatherhood - Steel Construction
- Shaft Seal - Standard
- Grease Trap, Shipped Loose
- Fasteners - Standard



PROJECT
4/28/2025
MARK
EF 1

PROJECT
4/28/2025
MARK
EF 1

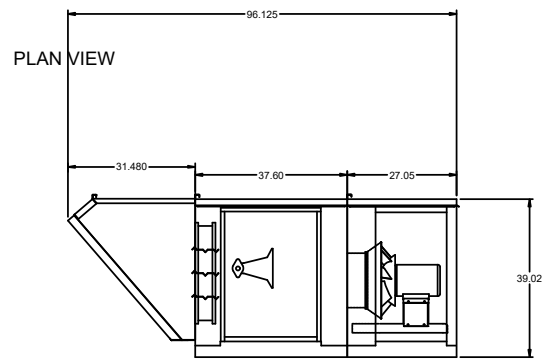
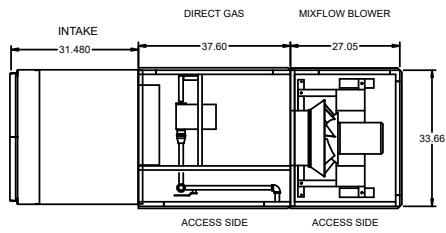
ACCUREX W/IA
PHILLIP KRAFT
PHILLIP.KRAFT@ACCUREX.COM
(262)227-7865



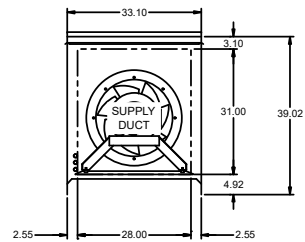
EQUIPMENT SCHEDULE										
Tempered Make-Up Air Unit										
Qty	Accurex Model	Volume	External SP	Total SP	MCA	MOP	Weight	SCCR	Mark: MAU 1	
1	XDGX-P109-H12-MF	1,980 CFM	0.5 in. wg	1,206 in. wg	10.6	15	618 lb	5kA		
Motor Information										
Size	VIC/P	Enclosure	Motor with Shaft Grounding	Motor RPM	Operating Power					
1 hp	230/0/1	ODP	No	3600	0.85 hp					
Heating										
Type	Gas Type	Temperature			Energy	Connection	Building	Control	Gas Pressure	
Direct Gas	Natural	Winter DB	Max Δ	Max LAT	Input	Gas (IN)	Access	Access	Min	Max
		-10.0 F	80.0 F	70.0 F	186.0 MSH	3/4"	1/2 PSI	Right Hand	7 in. wg	0.5 PSI
Outlet Sound Power By Octave Band										
Hz	LwA	dBA	Sones							
62.5	125	250	500	1000	2000	4000	8000			
82.4	71	71	74.6	77.9	80.3	79.8	73	85.5	74.5	22.7

OPTIONS AND ACCESSORIES

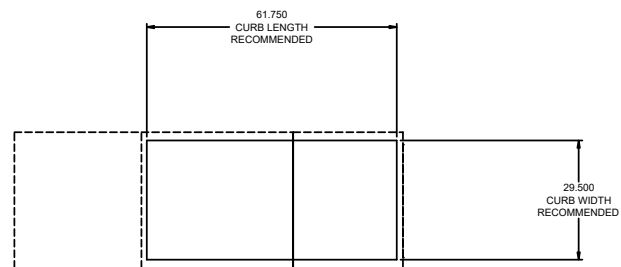
Make Up Air
 Air Flow Arrangement: Outdoor Air Only
 Weatherhood: Aluminum Mesh, 16x20x2 - (4)
 Damper: Inlet
 Outdoor Air Intake Position: End
 Discharge Position: End
 Coating: Galvanized
 Insulation: Double Wall - Tempering On
 Supply Fan Control: VFD
 VFD Control: Constant Volume
 Access Side: Right-Hand
 Unit Weight: 618 lb
 Control Center
 Heat Inlet Air Sensor
 Unit Controls: Terminal Strip
 Temperature Control: Discharge
 Direct Gas Options/Accessories
 Approvals: ETL
 FM Compliant
 Flame Sensing: Flame Rod
 Ignition Control: Pilot



ELEVATION VIEW



END VIEW



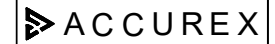
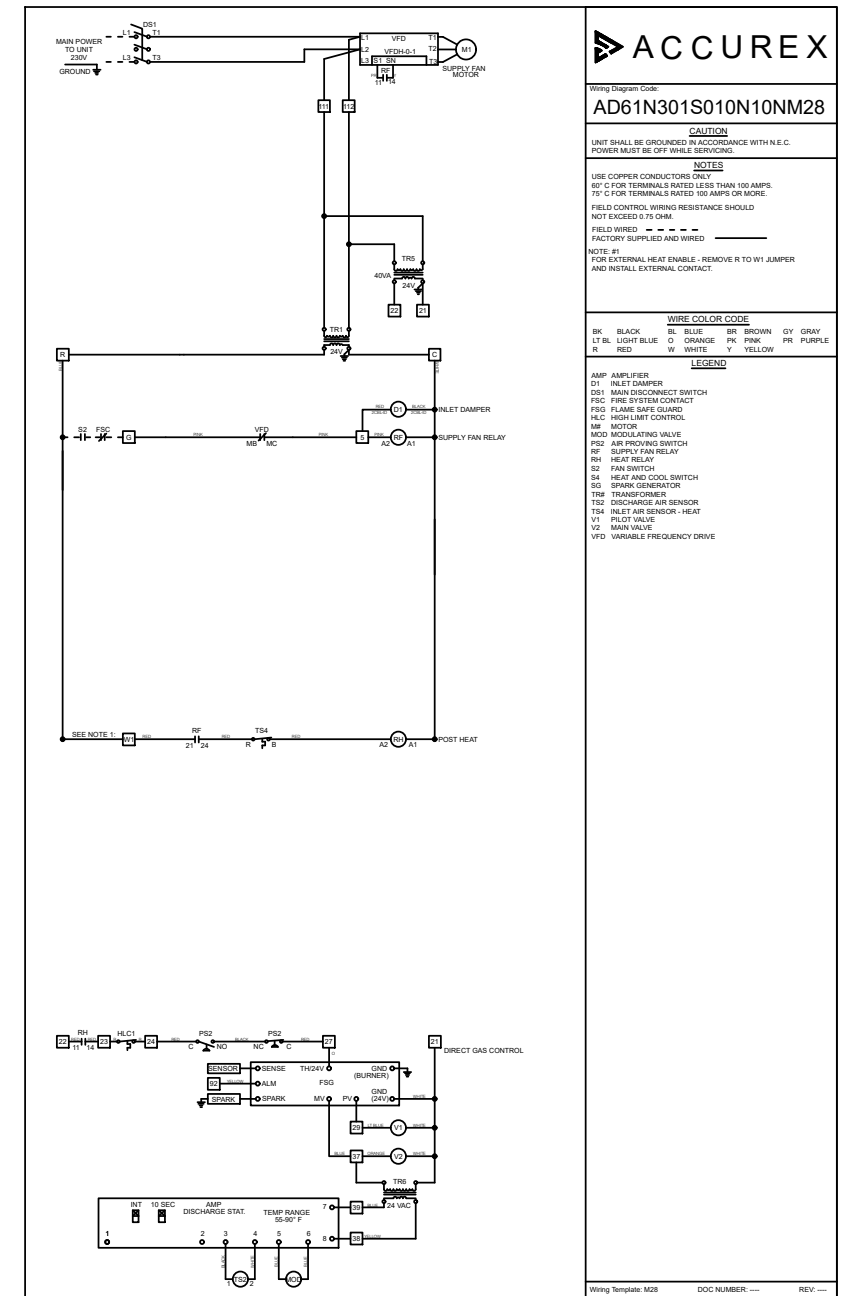
FOOTPRINT

NOTE: Roof Opening Requirements:

Minimum Roof Opening: The minimum roof opening size is the illustrated duct diameter plus 0.25 in. on all sides.
 For example: If the duct size is 14 x 14 in. square, the minimum roof opening size is 14.5 x 14.5 in. square.

Maximum Roof Opening: There must be a minimum perimeter of 1.75 in. between the roof opening and the roof curb.
 For example: If the roof curb is 75 x 30 in. square, the maximum roof opening is 71.5 x 26.5 in. inches square.

NOTE: The weatherhood and filter sections of the make-up air unit are not supported by the curb.
 This is by design, in order to help alleviate water infiltration issues.



Wiring Diagram Code:
AD61N301S010N10NM28

CAUTION
 UNIT SHALL BE GROUNDED IN ACCORDANCE WITH N.E.C. POWER MUST BE OFF WHILE SERVICING.

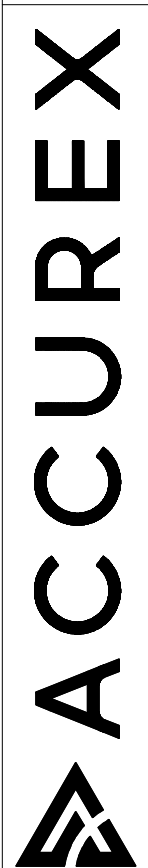
NOTES
 USE COPPER CONDUCTORS ONLY
 60° C FOR TERMINALS RATED LESS THAN 100 AMPS.
 75° C FOR TERMINALS RATED 100 AMPS OR MORE.
 FIELD CONTROL WIRING RESISTANCE SHOULD NOT EXCEED 0.75 OHM.
 NOTE #1
 FOR EXTERNAL HEAT ENABLE, REMOVE R TO W1 JUMPER AND INSTALL EXTERNAL CONTACT.

WIRE COLOR CODE
 BK BLACK BL BLUE BR BROWN GY GRAY
 LT LT LIGHT BLUE O ORANGE PK PINK PR PURPLE
 R RED W WHITE Y YELLOW

LEGEND
 AMP AMPLIFIER
 D1 INLET DAMPER
 DS1 MAIN DISCONNECT SWITCH
 FSC FUSE SYSTEM CONTACT
 FSG FLAME SAFE GUARD
 H-C HIGH LIMIT CONTROL
 M MOTOR
 MOD MODULATING VALVE
 PDS AIR PROVING SWITCH
 RF SUPPLY FAN RELAY
 RH HEAT RELAY
 S2 FAN SWITCH
 S4 HEAT AND COOL SWITCH
 SG SPARK GENERATOR
 TRF TRANSFORMER
 TSD DISCHARGE AIR SENSOR
 TIA INLET AIR SENSOR - HEAT
 V1 PILOT VALVE
 V2 MAIN VALVE
 VFD VARIABLE FREQUENCY DRIVE

PROJECT: 4/28/2025
 MARK: MAU 1

ACCUREX W/IA
 PHILLIP KRAFT
 PHILLIP.KRAFT@ACCUREX.COM
 (262)227-7865

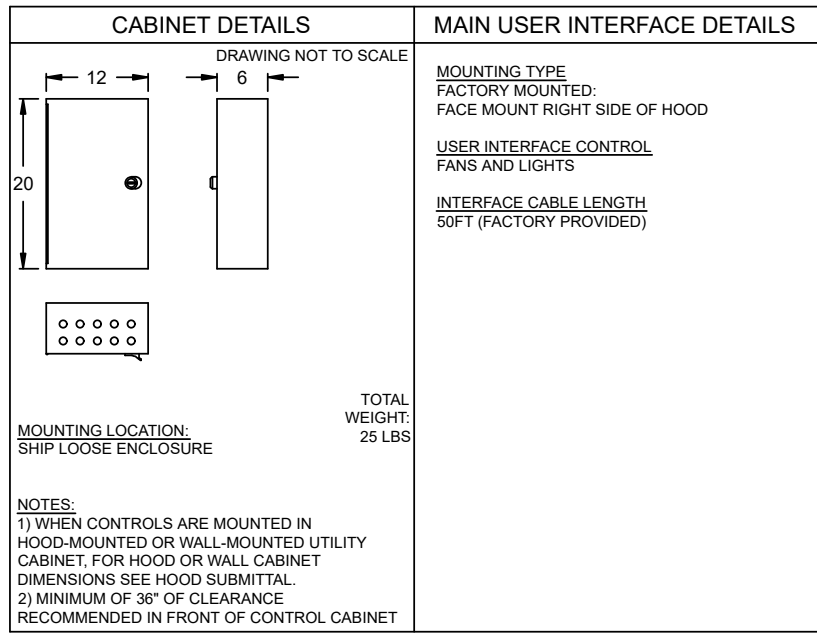
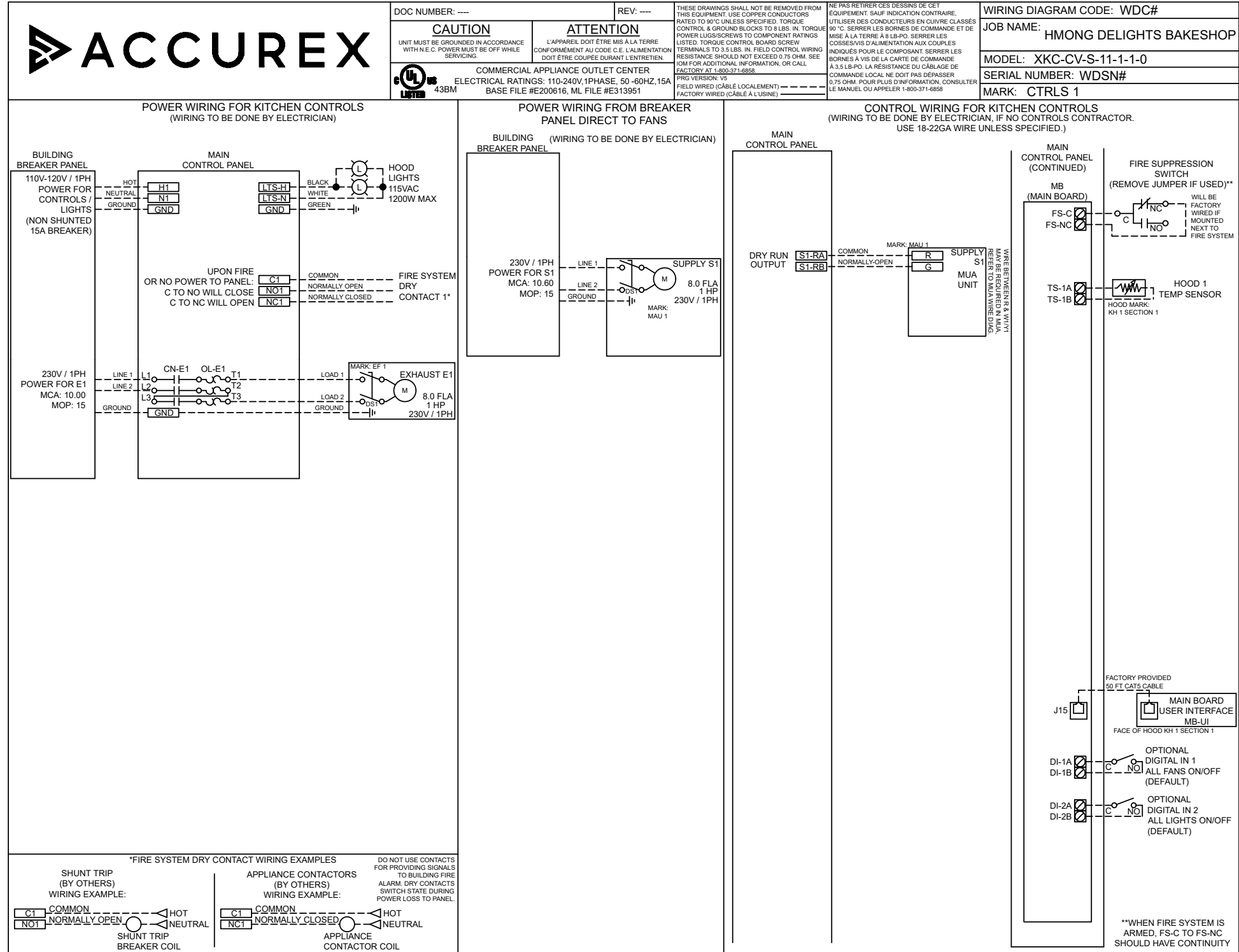


CONTROL INFORMATION

MARK	MAIN ELECTRICAL CONTROL PACKAGE		MAIN USER INTERFACE		FANS CONTROLLED											
	MODEL	LOCATION	TYPE	LOCATION	FAN #	TYPE	FAN	FAN MARK	ZONE	CFM	MOTOR HP	MOTOR VOLT	CYCLE	MOTOR PHASE	MOTOR STARTER IN PANEL	VFD IN PANEL
CTRLS 1	XKC-CV-S-11-1-1-0	SHIP LOOSE ENCLOSURE	FULL COLOR TOUCHSCREEN	HOOD - FACE MOUNT RIGHT END OF KH 1 SECTION 1	1	EXHAUST	E1	EF 1	1	2200	1	230	60	1	YES	NO
					2	SUPPLY	S1	MAU 1	1	1980	1	230	60	1	NO	NO

CONTROL FEATURES

- HOOD LIGHT CONTROL
- TEMP SENSORS (FACTORY INSTALLED) - QTY. 1
- DRY FIRE CONTACTS - QTY. 1
- LIGHTS OFF DURING FIRE
- EXHAUST MAX DURING FIRE
- SUPPLY OFF DURING FIRE



WIRING DIAGRAM CODE: WDC#
JOB NAME: HMONG DELIGHTS BAKESHOP
MODEL: XKC-CV-S-11-1-1-0
SERIAL NUMBER: WDSN#
MARK: CTRLS 1
DOC NUMBER: --- REV: --- PRG VERSION: V5

FACTORY SETTINGS
TYPE: CV
CONFIGURATION: STANDARD
ZONES: 1
HOODS: 1
EXHAUST FANS: 1
SUPPLY FANS: 1
MB ROOM SENSOR: NO
MB TEMP FAULT: NO
HIGH TEMP FAULT: NO
FREEZE PROTECTION: YES
MB GAS RESET: NO
FAN PROVING: NO
BMS: NONE

EXHAUST FAN SETTINGS
SEE FAN CONFIGURATION TABLE BELOW

SUPPLY FAN SETTINGS
SEE FAN CONFIGURATION TABLE BELOW

SENSOR SETTINGS
SEE HOOD CONFIGURATION TABLE BELOW

USER INTERFACE SETTINGS (MB)
FAN & LIGHT BUTTONS: SHOW BOTH (SEPERATE)

GENERAL SETTINGS
TIME ZONE: CENTRAL DAYLIGHT (DEFAULT)

MB FIRE/FAULT SETTINGS
EXHAUST DURING FIRE: MAX
SUPPLY DURING FIRE: OFF
LIGHTS DURING FIRE: OFF

ZONE SETTINGS
SEE ZONE CONFIGURATION TABLE BELOW

HOOD SETTINGS
SEE HOOD CONFIGURATION TABLE BELOW

ZONE CONFIGURATION

ZONE #	ZONE	ROOM TEMP
1	Z1	PRESET

HOOD CONFIGURATION

HOOD #	HOOD	HOOD MARK	ZONE	EXH A	EXH B	SUPPLY	MB TEMP SENSORS
1	H1	KH 1 SECTION 1	Z1	E1	-	S1	TS1

FAN CONFIGURATION

FAN #	TYPE	FAN	FAN MARK	ZONE	MIN CFM	MAX CFM	MODBUS VFD	VFD ADDRESS	MIN FREQ	MAX FREQ	MIN VDC	MAX VDC
1	EXHAUST	E1	EF 1	Z1	-	2200	NO	-	-	-	-	10.0
2	SUPPLY	S1	MAU 1	Z1	-	1980	NO	-	-	-	-	10.0

FIRE SYSTEM INFORMATION

MARK	MODEL	LOCATION	FLOW POINTS		SUPPLY LINE	DETECTION	MARK(S) PROTECTED BY FIRE SYSTEM
			HOODS	PCU			
FSS 1	AMEREX KP WET CHEMICAL	REMOTE MOUNTED	7 UTILIZED 7 AVAILABLE		CONTINUOUS	FUSIBLE LINK	KH 1 SECTION 1

FIRE SYSTEM OPTIONS AND ACCESSORIES

FULL INSTALLATION (INCLUDES PRE-PIPED HOOD(S) WITH DETECTION AND FACTORY COORDINATED INSTALL)
 CHROME SLEEVES FOR FACTORY PROVIDED APPLIANCES DROPS - INCLUDED
 METAL BLOW-OFF CAPS - INCLUDED
 GAS VALVE - INCLUDED - MECHANICAL SHUTOFF VALVE, .75" (AMEREX) - PART# 468826
 HOOD SUPPRESSION TANK - INCLUDED - 2.5 GAL. - ((1) 2.5 TANK(S))
 REMOTE PULL STATION - STANDARD - FIELD INSTALLATION AT SINGLE POINT OF EGRESS
 SINGLE ENCLOSURE FOR RELEASE & FIRST TANK FOR REMOTE MOUNTING - INCLUDED

AMEREX KP (WET CHEMICAL) FIRE PROTECTION SYSTEM - MODEL FSSK

CONTROL PANEL

1. MRM (MECHANICAL RELEASE MODULE)
 2. NITROGEN ACTUATION CYLINDER
 3. MICROSWITCH

NOT TO SCALE

WIRING DIAGRAM FOR MICRO SWITCHES

BLACK LEAD
YELLOW LEAD

TRIP POSITION
TRIP/RESET POSITION

SWITCH RATING:
 21A 120/250V75°C
 1HP 120/250V75°C
 2HP 250V75°C

BOTH UPPER AND LOWER SWITCHES

TRIP
TRIP/RESET
NO
NC
C

NOTES:
 1. --- DENOTES FIELD INSTALLATION.
 2. ——— DENOTES FACTORY INSTALLATION.

NOTES:

WET CHEMICAL FIRE PROTECTION SYSTEM TO BE AMEREX KP, DESIGNED IN COMPLIANCE WITH UL 300 REQUIREMENTS.
 -VERIFICATION OF ALL COOKING EQUIPMENT MAKE, MODEL AND LOCATION REQUIRED FOR ALL FIRE PROTECTION SYSTEMS.
 -ALL FIRE SYSTEM PIPING IS STANDARDLY TO THE RIGHT END OF THE HOOD UNLESS A WALL IS LOCATED ON THE RIGHT END.
 -AMEREX MRM/PRM TO BE LOCATED WITHIN 60" OF HOOD.

THE BASIC FIRE SYSTEM WILL INCLUDE THE FOLLOWING:
 -GAS SHUT-OFF VALVE, IF REQUIRED, TO BE SUPPLIED BY MANUFACTURER (UP TO 2" DIAMETER AS STANDARD), AND INSTALLED BY A LICENSED PLUMBER.
 -MICRO SWITCH TO BE SUPPLIED BY MANUFACTURER FOR CONNECTION TO, BUT NOT LIMITED TO, BUILDING ALARM SYSTEM(S), EXHAUST AND SUPPLY FANS AND ELECTRICAL POWER SHUT DOWN. FIELD WIRING AND CONNECTIONS TO BE PERFORMED BY A LICENSED ELECTRICIAN.
 -THREE TRIPS TO THE JOBSITE
 -ANY STATE OR LOCAL INSTALLATION PERMITS.

THE BASIC FIRE SYSTEM DOES NOT INCLUDE THE FOLLOWING:
 -FULL DUMP TEST OTHER THAN WHAT IS SPECIFIED PER THE INSTALLATION MANUAL OR TO SATISFY A STATE OR LOCAL CODE.
 -MORE THEN THREE TRIPS TO THE JOBSITE OR SPECIAL TRANSPORTATION, OR OVERNIGHT LODGING REQUIREMENTS IN REMOTE AREAS. NORMAL TRAVEL DISTANCE IS FIRST 50 MI. (80.5 KM) FROM OFFICE.
 -SPECIAL CLASSES OR ADDITIONAL LABOR FOR ACCESS TO SECURITY SENSITIVE AREAS.
 -INSTALLATION OF GAS SHUT-OFF VALVE.
 -SPECIAL DRAWINGS REQUIRED TO SATISFY STATE OR LOCAL CODE.
 -UNION LABOR, GOVERNMENT LABOR, OR PREVAILING WAGES REQUIRED FOR FINAL FIELD HOOK-UP.
 -ANY AND ALL ELECTRICAL COMPONENTS/CONNECTIONS REQUIRED TO SHUT DOWN FANS, SHUT OFF DEVICE FOR ELECTRIC COOKING EQUIPMENT (SHUNT TRIP BREAKER), OR ACTIVATE AN ALARM SYSTEM, ETC.
 -ANY DISMANTLING OR REASSEMBLY REQUIRED TO GAIN ACCESS TO THE FIRE SUPPRESSION PIPING LOCATED ON THE TOP OF THE HOOD.
 -PLAN EXAMINATION FEES, PE OR FPS APPROVAL STAMP.
 -ROUGH-IN CONDUIT FOR REMOTE PULL STATION OR GAS VALVE (FOR FLUSH MOUNTED PULL STATION).
 -INSTALLATION OF MORE THAN (1) REMOTE PULL STATIONS OR DISTANCES GREATER THAN 20 FT. (6.1M).
 -PARTS OR LABOR REQUIRED TO CORRECT PIPING DUE TO COOKING EQUIPMENT CHANGES OR DEVIATION FROM PLANS, OR ANY CHARGES FOR MISSING OR ADDITIONAL PARTS OTHER THEN THOSE INDICATED ON THE FIRE SUPPRESSION DETAIL.

CONNECTION TO BUILDINGS ALARM

NO NC C

VOLTAJE FREE CONTACTS FOR BUILDING ALARM

CONNECTION TO KC (PCB) CONTROL PANEL

NO NC C

KC (PCB) CONTROL PANEL

DO NOT WIRE ANY HOT WIRES INTO THE ELECTRICAL TERMINALS ON PCB BOARD. WIRE TO LIVE NORMAL VOLTAGE CONTACT ON FIRE SUPPRESSION MICRO SWITCH.