

FOR QUESTIONS, CALL THE
Highwoods Group
REGION 40
PHONE: (919) 875 - 0420
EMAIL: reg40@captiveaire.com

PATENT NUMBERS

AC-PSP (UNITED STATES) - US PATENT 7963830 B2.
AC-PSP WALL (CANADA) - CA PATENT 2820509.
AC-PSP ISLAND (CANADA) - CA PATENT 2520330.

SPECIFICATION: CAPTRATE® GREASE-STOP® SOLID FILTER

THE CAPTRATE GREASE-STOP SOLID FILTER IS A SINGLE-STAGE FILTER FEATURING A UNIQUE S-BAFFLE DESIGN IN CONJUNCTION WITH A SLOTTED REAR BAFFLE DESIGN, TO DELIVER EXCEPTIONAL FILTRATION EFFICIENCY.

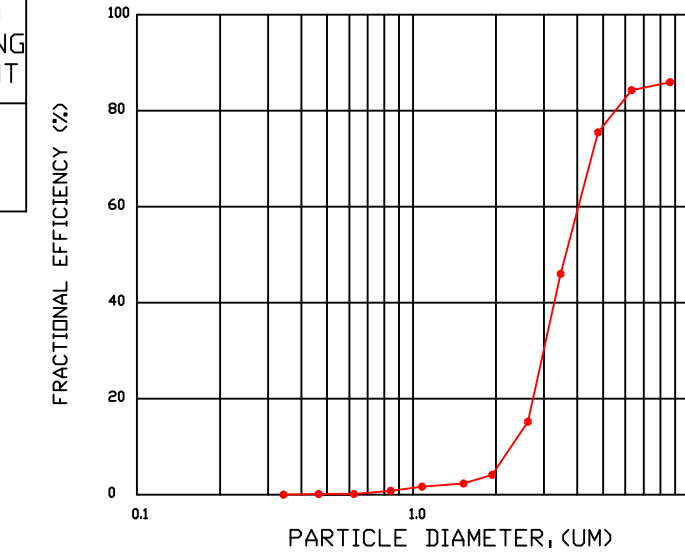
FILTER IS STAINLESS STEEL CONSTRUCTION, AND SIZED TO FIT INTO STANDARD 2-INCH DEEP HOOD CHANNEL(S).

UNITS SHALL INCLUDE STAINLESS STEEL HANDLES AND A FASTENING DEVICE TO SECURE THE TWO COMPONENTS WHEN ASSEMBLED.

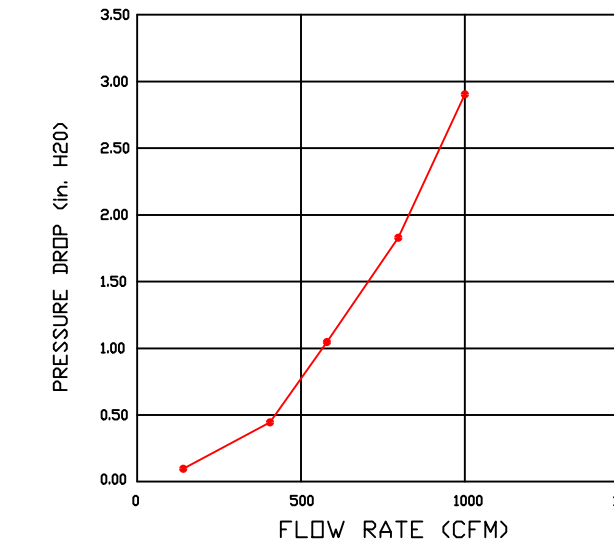
GREASE EXTRACTION EFFICIENCY PERFORMANCE SHALL REMOVE AT LEAST 75% OF GREASE PARTICLES FIVE MICRONS IN SIZE, AND 85% GREASE PARTICLES SEVEN MICRONS IN SIZE AND LARGER, WITH A CORRESPONDING PRESSURE DROP NOT TO EXCEED 1.0 INCHES OF WATER GAUGE.

THE CAPTRATE GREASE-STOP SOLID WAS TESTED TO ASTM STANDARD ASTM F2519-05. MANUFACTURER APPROVED FOR USE IN SOLID FUEL APPLICATIONS AS A SPARK ARRESTER.

EFFICIENCY VS. PARTICLE DIAMETER



PRESSURE DROP VS. FLOW RATE



CAPTRATE FILTERS ARE BUILT IN COMPLIANCE WITH:
NFPA #96.
NSF STANDARD #2.
UL STANDARD #1046.
INT. MECH. CODE (IMC).
ULC-S649.



HOOD INFORMATION - JOB#7466252

HOOD NO	TAG	MODEL	MANUFACTURER	LENGTH	MAX COOKING TEMP	TYPE	APPLIANCE DUTY	DESIGN CFM/FT	TOTAL EXH CFM	EXHAUST PLENUM RISER(S)				MUA CFM	AC CFM	HOOD CONSTRUCTION	HOOD CONFIG			
										WIDTH	LENG	HEIGHT	DIA				CFM	VEL	SP	END TO END
1		5424 ND-2-ACPSP-F	CAPTIVEAIRE	12' 9"	600 DEG	I	HEAVY	200	2550	10"	24"	4"	2550	1530	-0.966"	1300	696	430 SS WHERE EXPOSED	ALONE	ALONE

HOOD INFORMATION

HOOD NO	TAG	FILTER(S)					LIGHT(S)				UTILITY CABINET(S)				FIRE SYSTEM PIPING	HOOD HANGING WEIGHT	
		TYPE	QTY	HEIGHT	LENGTH	EFFICIENCY @ 7 MICRONS	QTY	TYPE	WIRE GUARD	LOCATION	SIZE	FIRE SYSTEM TYPE	SIZE	ELECTRICAL MODEL #			SWITCHES QUANTITY
1		CAPTRATE SOLID FILTER	9	16"	16"	85% SEE FILTER SPEC	8	L55 SERIES E26	NO	RIGHT	12"x54"x24"	TANK FS	4.0/4.0	SC-311110MA	1 LIGHT 1 FAN	YES	1214 LBS

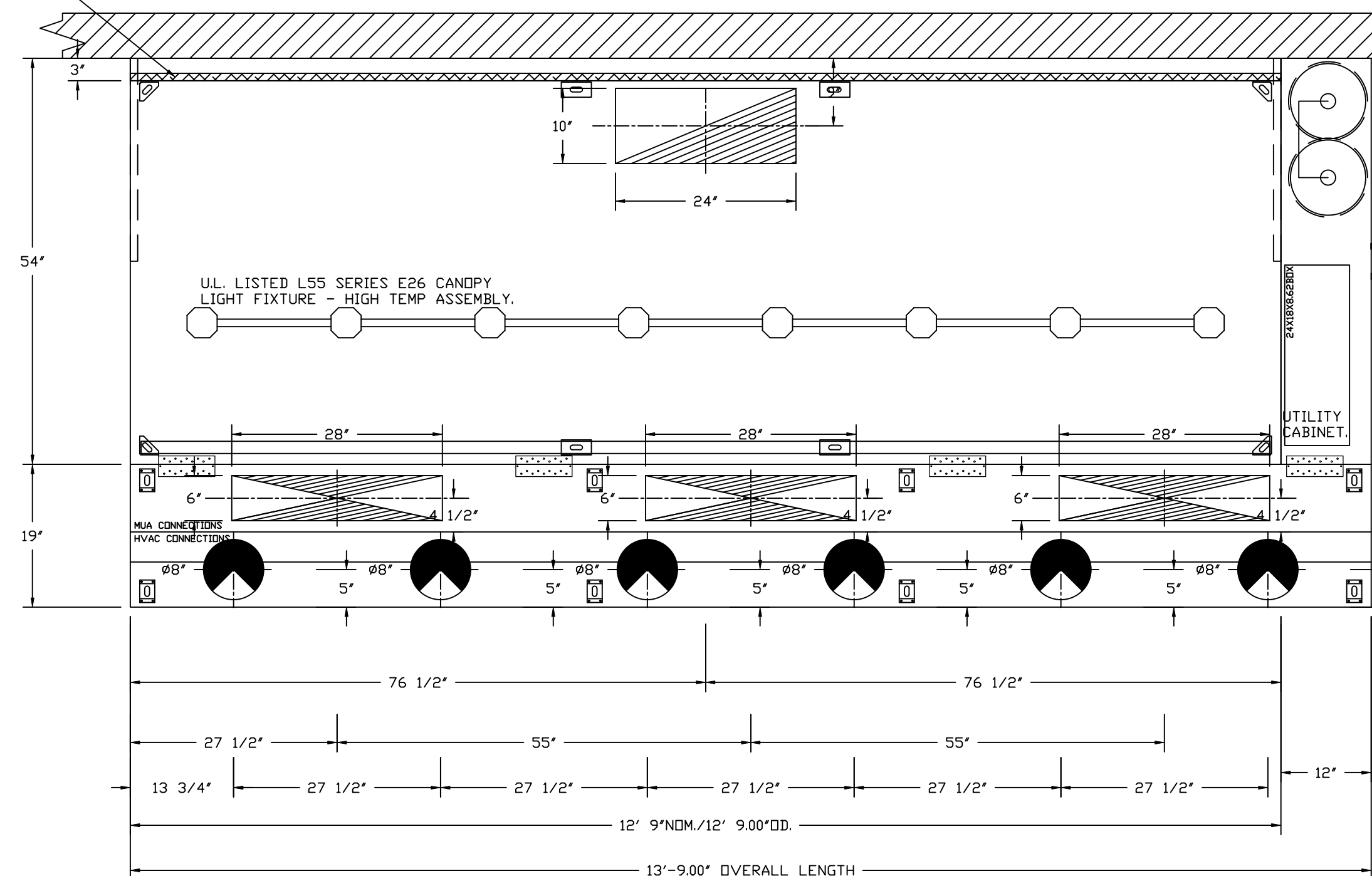
HOOD OPTIONS

HOOD NO	TAG	OPTION
1		FIELD WRAPPER 10.00" HIGH FRONT, LEFT, RIGHT. INSULATION FOR BACK OF HOOD. RISER SENSOR INSTALL 6IN PLEN. RIGHT VERTICAL END PANEL 27" TOP WIDTH, 21" BOTTOM WIDTH, 80" HIGH INSULATED 430 SS. LEFT VERTICAL END PANEL 27" TOP WIDTH, 21" BOTTOM WIDTH, 80" HIGH INSULATED 430 SS. FULL DIMENSION HANGING BRACKET - FRONT.

PERFORATED SUPPLY PLENUM(S)

HOOD NO	TAG	POS	LENGTH	WIDTH	HEIGHT	RISER(S)				
						TYPE	WIDTH	LENG	DIA	CFM
1		Front	165'	19'	6'	MUA	6"	28"	432	0.127"
						MUA	6"	28"	432	0.127"
						MUA	6"	28"	432	0.127"
						AC	8"	116	0.043"	
						AC	8"	116	0.043"	
						AC	8"	116	0.043"	
						AC	8"	116	0.043"	
						AC	8"	116	0.043"	

1" LAYER OF INSULATION FACTORY INSTALLED IN INTERNAL BACK STANDOFF. MEETS 0 INCH REQUIREMENTS FOR CLEARANCE TO COMBUSTIBLE SURFACES.



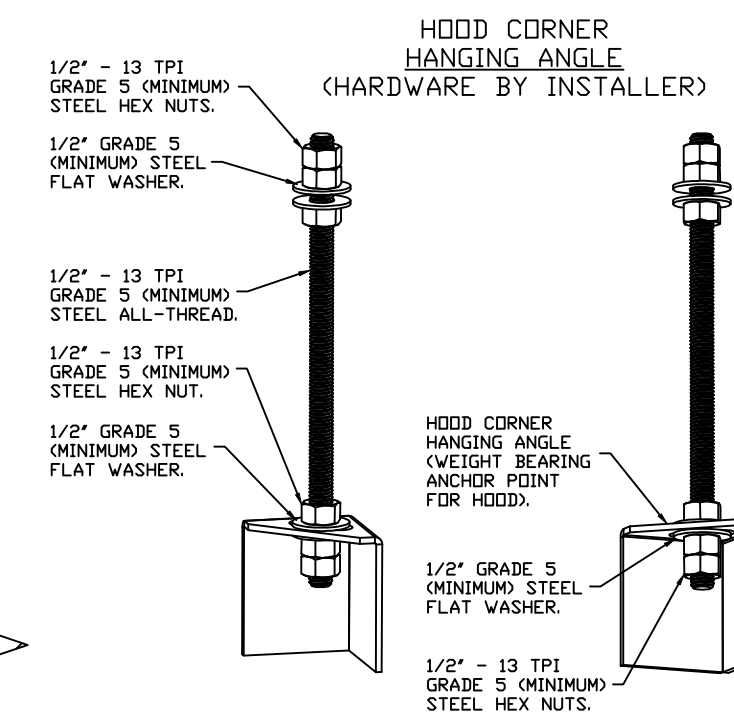
PLAN VIEW - HOOD #1
12' 9.00" LONG 5424ND-2-ACPSP-F
NOTE: ADDITIONAL HANGING ANGLES PROVIDED FOR HOODS 12' AND LONGER.

ACPSP SHIPS LOOSE FOR FIELD INSTALLATION

CLEARANCE TO COMBUSTIBLES

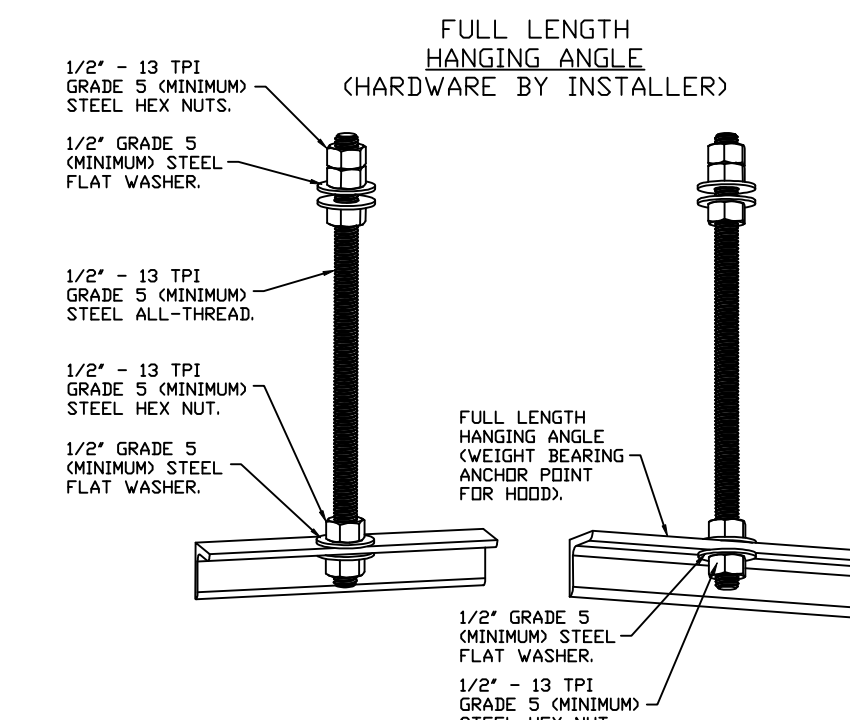
HOODS #	SURFACE	*CLEARANCE
1	TOP	18"
	FRONT	0"
	BACK	0"
	LEFT	18"
	RIGHT	0"

- *0" CLEARANCE TO COMBUSTIBLES CONFORMS TO UL710 STANDARD.
- HOOD MOUNTED UTILITY CABINETS REQUIRE 36" SERVICE CLEARANCE.



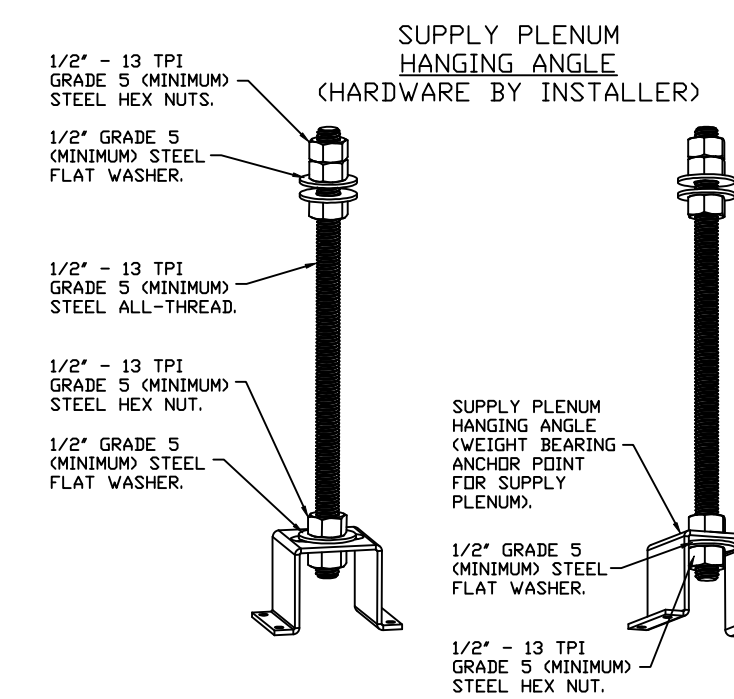
ASSEMBLY INSTRUCTIONS

HANGING ANGLE MUST BE SUPPORTED WITH 1/2" - 13 TPI GRADE 5 (MINIMUM) ALL-THREAD. SANDWICH HANGING ANGLES AND CEILING ANCHOR POINTS WITH 1/2" GRADE 5 (MINIMUM) STEEL FLAT WASHERS AND 1/2" - 13 TPI GRADE 5 (MINIMUM) HEX NUTS AS SHOWN. MUST USE DOUBLED HEX NUT CONFIGURATION BENEATH HOOD HANGING ANGLES AND ABOVE CEILING ANCHORS. MAINTAIN 1/4" OF EXPOSED THREADS BENEATH BOTTOM HEX NUT. TORQUE ALL HEX NUTS TO 57 FT-LBS.



ASSEMBLY INSTRUCTIONS

HANGING ANGLE MUST BE SUPPORTED WITH 1/2" - 13 TPI GRADE 5 (MINIMUM) ALL-THREAD. SANDWICH HANGING ANGLES AND CEILING ANCHOR POINTS WITH 1/2" GRADE 5 (MINIMUM) STEEL FLAT WASHERS AND 1/2" - 13 TPI GRADE 5 (MINIMUM) HEX NUTS AS SHOWN. MUST USE DOUBLED HEX NUT CONFIGURATION ABOVE CEILING ANCHORS. SINGLE HEX NUT BENEATH HANGING ANGLE IS ACCEPTABLE FOR FULL LENGTH HANGING ANGLES. MAINTAIN 1/4" OF EXPOSED THREADS BENEATH BOTTOM HEX NUT. TORQUE ALL HEX NUTS TO 57 FT-LBS.



ASSEMBLY INSTRUCTIONS

HANGING ANGLE MUST BE SUPPORTED WITH 1/2" - 13 TPI GRADE 5 (MINIMUM) ALL-THREAD. SANDWICH HANGING ANGLES AND CEILING ANCHOR POINTS WITH 1/2" GRADE 5 (MINIMUM) STEEL FLAT WASHERS AND 1/2" - 13 TPI GRADE 5 (MINIMUM) HEX NUTS AS SHOWN. MUST USE DOUBLED HEX NUT CONFIGURATION ABOVE CEILING ANCHORS. SINGLE HEX NUT BENEATH HANGING ANGLE IS ACCEPTABLE FOR PSP HANGING ANGLES. MAINTAIN 1/4" OF EXPOSED THREADS BENEATH BOTTOM HEX NUT. TORQUE ALL HEX NUTS TO 57 FT-LBS.

REVISIONS

DESCRIPTION	DATE

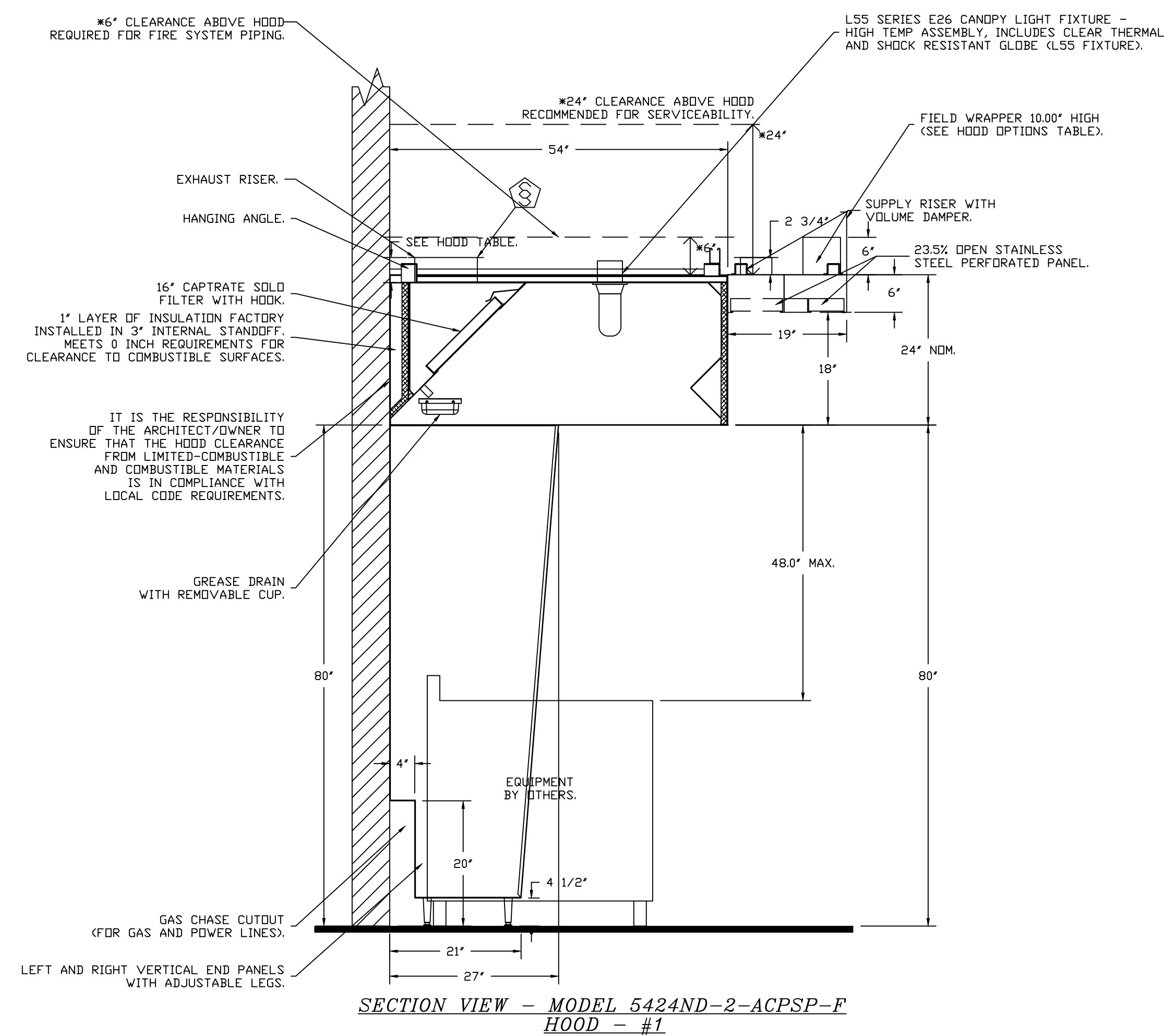
CAPTIVEAIRE

Highwoods Group
www.captiveaire.com
4641 Paragon Park Rd., Raleigh, NC, 27616 PHONE: (919) 875 - 0420 FAX: 9198750577 EMAIL: reg40@captiveaire.com

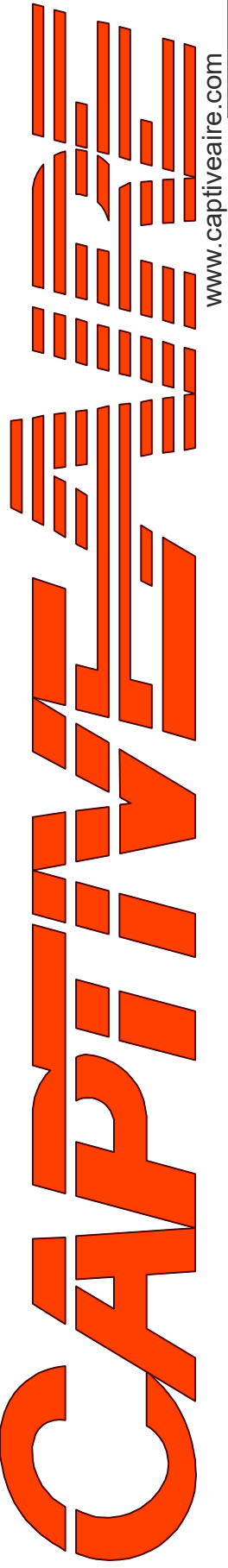
CHIPOTLE LAMB & AZURE #5044 R1
North Las Vegas, NV, 89115

DATE: 4/14/2025
DWG.#: 7466252
DRAWN BY: JMB-40
SCALE: 3/4" = 1'-0"
MASTER DRAWING

SHEET NO. 1



REVISIONS	
DESCRIPTION	DATE



Highwoods Group

4641 Paragon Park Rd., Raleigh, NC, 27616 PHONE: (919) 875 - 0420 FAX: 9198750577 EMAIL: reg40@captiveware.com

CHIPOTLE LAMB & AZURE #5044 R1
North Las Vegas, NV, 89115

DATE: 4/14/2025

DWG.#: 7466252

DRAWN BY: JMB-40

SCALE: 3/4" = 1'-0"

MASTER DRAWING

SHEET NO.
2

FIRE SYSTEM INFORMATION - JOB#7466252

FIRE SYSTEM NO	TAG	TYPE	SIZE	MAX FP	DESIGN FP	INSTALLATION	
						SYSTEM	LOCATION ON HOOD
1		TANK FS	4.0/4.0	40	32	FIRE CABINET RIGHT	RIGHT, HOOD 1

GAS VALVE(S)

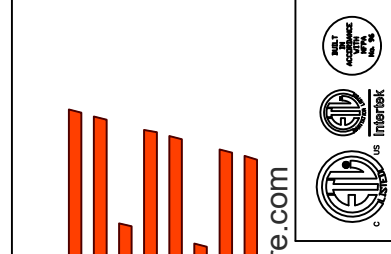
FIRE SYSTEM NO	TAG	TYPE	SIZE	SUPPLIED BY
1		SC ELECTRICAL	1.500	CAPTIVEAIR SYSTEMS

FIRE SYSTEM PARTS LIST KEY

FIRE SYSTEM NO	TAG	KEY NUMBER - PART DESCRIPTION	QTY BY FACTORY	QTY BY DIST
1		0 - 0 - TANK FIRE SUPPRESSION POST-DISCHARGE PROCEDURE UTILITY CABINET LABEL SHEET.	1	0
		0 - 0 - TANK FIRE SUPPRESSION MAINTENANCE GUIDE UTILITY CABINET LABEL SHEET.	1	0
		0 - 0 - 12-F28021-32144-DT-360 DUCT FIRE THERMOSTAT WITH 12 FOOT WIRE LEADS. ND, CLOSE ON TEMP RISE AT 360°F. (A0034310).	1	0
		0 - 0 - 32-00002 QUIK SEAL - 1/2" (UL).	1	0
		0 - 0 - 4429K153 1/2" MALE NPT TO 1/2" FEMALE NPT ELBOW, BRASS.	2	0
		0 - 0 - 4429K422 1/2" X 1/4" BRASS REDUCING BUSHING.	1	0
		0 - 0 - 79525 1/2" 90 PRO-PRESS ELBOW WITH 1/2" NPT FEMALE CONNECTION, VIEGA.	1	0
		0 - 0 - 79580 1/2" X 1/2" PRO-PRESS TEE X 1/2" NPT FEMALE CONNECTION, VIEGA.	2	0
		0 - 0 - 87-120042-001 SECONDARY ACTUATOR VALVE (SVA) - SINGLE ACTUATOR, REQUIRES PRIMARY RELEASE ACTUATOR, TANK FIRE SUPPRESSION.	1	0
		0 - 0 - 87-120045-001 HOSE, SECONDARY ACTUATOR HOSE, 7.5' BRAIDED STAINLESS STEEL, TANK FIRE SUPPRESSION.	1	0
		0 - 0 - 87-300001-001 TANK - PRESSURIZED TANK USED FOR TANK FIRE SUPPRESSION.	2	0
		0 - 0 - 87-300030-001 PRIMARY ACTUATOR KIT (PAK) - ACTUATOR AND RELEASE SOLENOID ASSEMBLY, ONE NEEDED PER FIRE SYSTEM, SUPERVISED, TANK FIRE SUPPRESSION.	1	0
		0 - 0 - 87-300033-001 DIN CONNECTOR, CANFIELD PART #5J560-201-EU0A, TANK FIRE SUPPRESSION, SUBMINATURE SOLENOID CONNECTION (CED VENDOR 30377).	1	0
		0 - 0 - 87-300152-001 HARDWARE, SVA BOLTS, TANK FIRE SUPPRESSION.	8	0
		0 - 0 - 9055455PC PRO PRESS 1/2 PRESS X PRESS 90 ELBOW LD.	7	0
		0 - 0 - 9097200PC PRO PRESS PC611 1/2 PRESS TEE LD.	7	0
		0 - 0 - 98694A115 HARDWARE, DATANKLOCK LOCKING BRACKET SQUARE NUTS 5/16" ZINC, TANK FIRE SUPPRESSION.	4	0
		0 - 0 - A0034332 JUNCTION BOX FOR MANUAL PULL STATION. 1.5' DEEP BACK BOX, RED COLOR.	1	0
		0 - 0 - A31484 1/4" NPT SCHRADER VALVE AND CAP, JB INDUSTRIES. 1/4" FLARE X 1/4" MPT HALF UNION. USED ON TANK SERVICE PORT.	1	0
		0 - 0 - B1145 3/8" BLACK IRON 90 ELL.	3	0
		0 - 0 - DATANKLOCK DISCHARGE ADAPTER TANK LOCKING PLATE FOR FIRE SYSTEM TANK INSTALLATION IN UTILITY CABINETS, TANK FIRE SUPPRESSION.	2	0
		0 - 0 - TANK STRAP TANK STRAP - USED FOR TANK FIRE SUPPRESSION.	6	0
		0 - 0 - TFS-UCTANKBRACKET TANK BRACKET FOR FIRE SYSTEM TANK INSTALLATION IN UTILITY CABINETS, TANK FIRE SUPPRESSION.	2	0
		0 - 0 - WK-283952-000 DISCHARGE ADAPTER, TANK FIRE SUPPRESSION.	2	0
		16 - 16 - 79210 1/2" X 3/8" NPT MALE ADAPTER, VIEGA.	8	0
		16 - 16 - DL-F NOZZLE - TANK PROTECTION APPLIANCE COVERAGE NOZZLE (INCLUDES METAL BLOW OFF CAP, LANYARD, USED WITH CHROME-PLATED PIPE).	8	0
		26 - 26 - QSA-3/8 QUIK SEAL - 3/8" (UL).	8	0
		34 - 34 - A0034331 24VDC SINGLE ACTION MANUAL ACTUATION DEVICE (PUSH/PULL STATION) WITH PROTECTIVE COVER, ONE (1) NORMALLY OPEN CONTACT. RED COLOR.	1	0

REVISIONS

DESCRIPTION	DATE:



CAPTIVE AIR
 Highwoods Group
 4641 Paragon Park Rd., Raleigh, NC 27616 PHONE: (919) 875 - 0420 FAX: 9198750577 EMAIL: reg40@captiveaire.com
 www.captiveaire.com

CHIPOTLE LAMB & AZURE #5044 R1
 North Las Vegas, NV, 89115

DATE: 4/14/2025

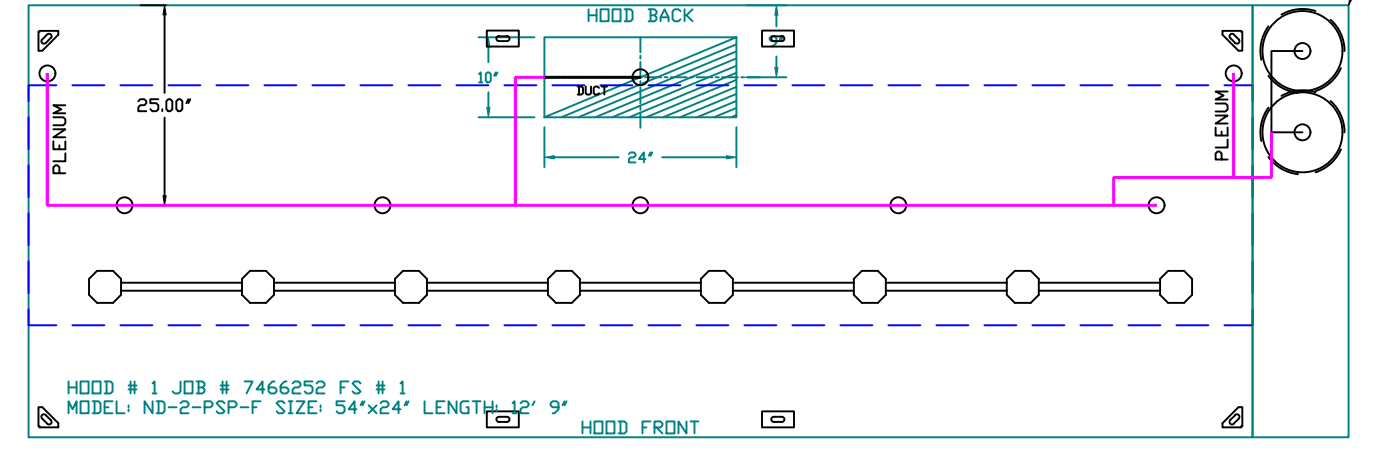
DWG.#:
7466252

DRAWN BY: JMB-40

SCALE:
3/4" = 1'-0"

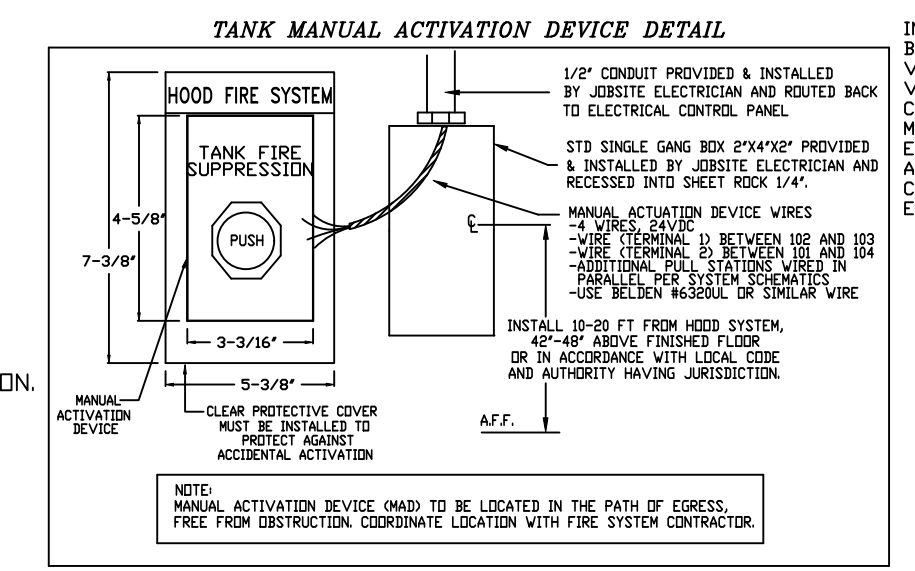
MASTER DRAWING

SHEET NO.
3

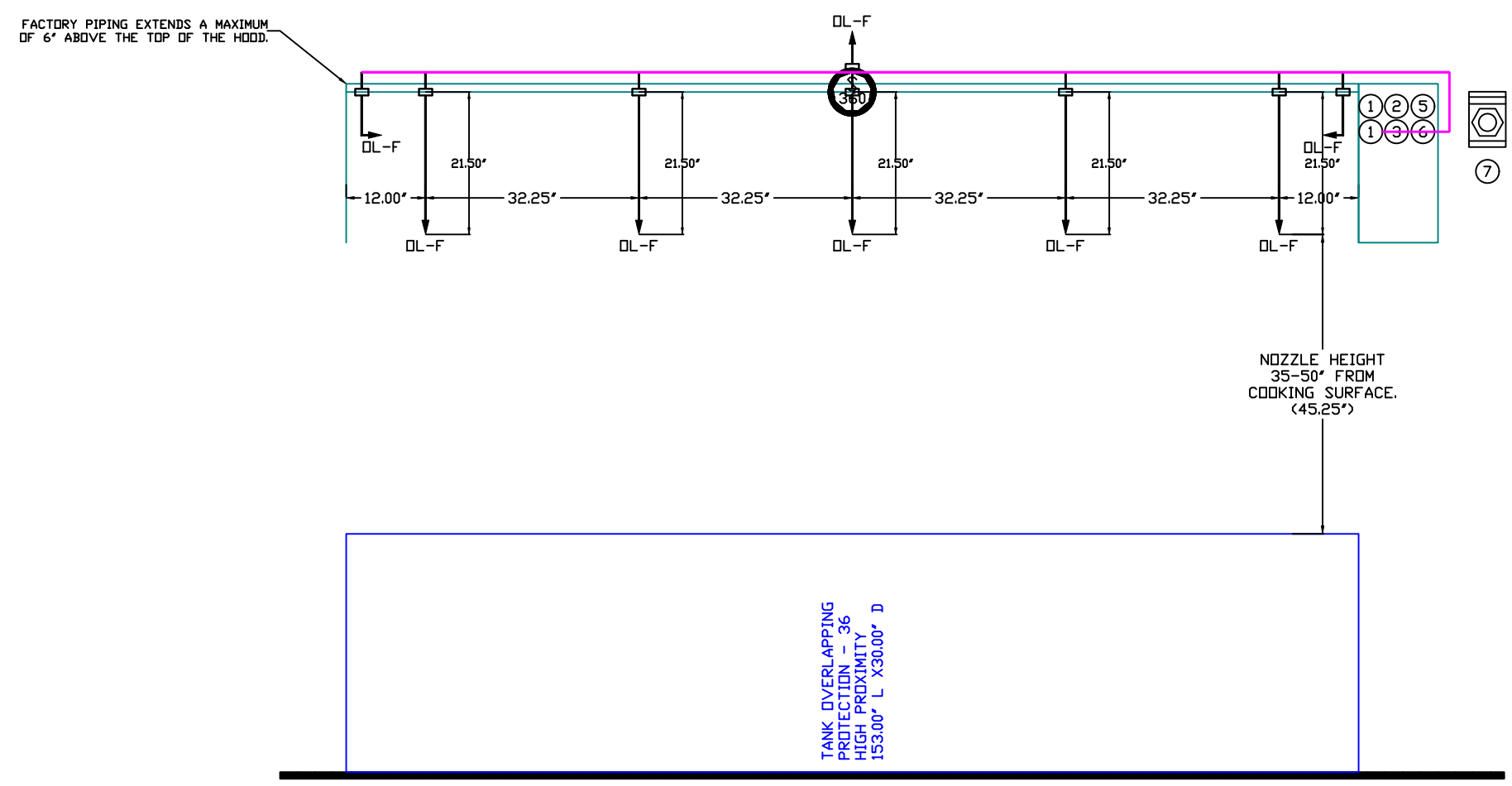


SYSTEM REQUIRES A MINIMUM OF 7 FT OF EQUIVALENT PIPE LENGTH BETWEEN TANK AND NEAREST APPLIANCE NOZZLE. FOR MOST APPLIANCES, EACH 90 DEGREE ELBOW ADDS 1.5 FT OF EQUIVALENT LENGTH. SEE MANUAL FOR DETAILS.

- NOTES
- FIELD PIPE DROPS AS SHOWN.
 - PIPING, ELBOWS, TEES, AND NOZZLES SUPPLIED BY GAS.
 - FIELD INSTALLED DROP: FACTORY WILL PROVIDE QTY 2 60IN LONG PIECES OF CHROME PLATED PIPING SHIPPED LOOSE TO BE FIELD-INSTALLED.
 - SHIP LOOSE DROP: FACTORY WILL PROVIDE THE EXACT CHROME PIPE LENGTH NEEDED SHIPPED LOOSE TO BE FIELD-INSTALLED.
 - RELOCATE NOZZLES IF FLOW PATTERN IS BLOCKED BY SHELVING, SALAMANDERS, ETC.
 - OVERLAPPING COVERAGE SHALL NOT BE USED ON ANY APPLIANCE WITH AN OBSTRUCTION.
 - IF APPLICABLE, EXTENDED PRE-PIPED DROPS ARE SHIPPED LOOSE.
 - FACTORY PIPING EXTENDS A MAXIMUM OF 6' ABOVE THE TOP OF THE HOOD.
 - APPLIANCE DIMENSIONS LISTED REPRESENT THE COOKING SURFACE SIZE, NOT THE OVERALL APPLIANCE SIZE.
 - THIS PRE-ENGINEERED FIRE SYSTEM COMPLIES WITH UL 300 REQUIREMENTS.



INCLUDES: FIELD INSTALLATION AND HOOKUP DURING NORMAL BUSINESS HOURS BY CERTIFIED INSTALLERS ONLY IN THE LOCATION NOTED ABOVE. TWO SITE VISITS ONLY (ONE VISIT TO SET PULL STATION & SYSTEM HOOKUP AND ONE VISIT FOR ONE TEST). ADDITIONAL VISITS WILL RESULT IN ADDITIONAL CHARGES. ONE MECHANICAL OR ELECTRICAL GAS VALVE PER SYSTEM AT A MAXIMUM SIZE OF 2". PERMIT, AND SYSTEM TEST. EXCLUDES: UNION LABOR & PREVAILING WAGE (LABOR & WAGES WILL BE ADDED IF APPLICABLE), GAS VALVE INSTALLATION, ELECTRICAL HOOKUP AND CONNECTIONS, HANGING OF FIRE CABINET, SHUNT TRIP, HANDHELD EXTINGUISHER(S), ON-SITE RE-PIPING DUE TO EQUIPMENT LAYOUT CHANGES.

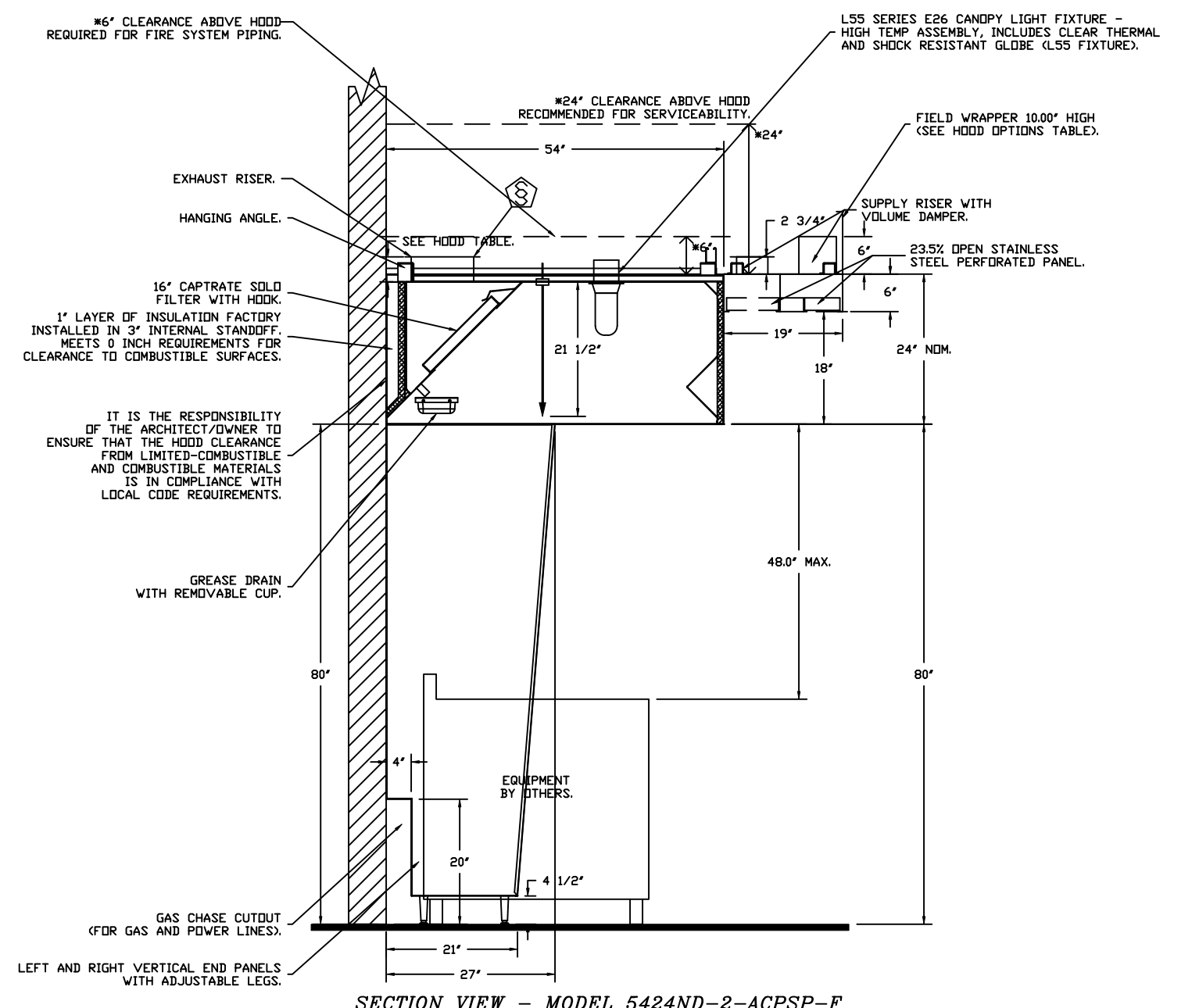


- QL-F NOZZLE PART NUMBER REPLACES 3070-3/8H-10-SS
- JOB #: 7466252
- JOB NAME: CHIPOTLE LAMB & AZURE #5044 R1.
- SYSTEM SIZE: TANK-SP-2 DESIGN FP: 32. MAXIMUM FP: 40.
- HOOD # 1 12' 9.00' LONG x 54' WIDE x 24' HIGH.
- RISER # 1 SIZE: 10" x 24".
- HOOD # 1 METAL BLOW-OFF CAPS INCLUDED.

- HEAVY-DUTY APPLIANCES (RATED 600°F) WILL REQUIRE AN ADDITIONAL DOWNSTREAM FIRESTAT IN THE EVENT THAT THE DUCTWORK CONTAINS ANY HORIZONTAL RUNS OVER 25 FT IN LENGTH.
- MEDIUM TO LIGHT-DUTY APPLIANCES (RATED 450°F) WILL NOT REQUIRE ANY ADDITIONAL DOWNSTREAM DETECTION.

AGENT DISTRIBUTION PIPING LIMITATIONS	
PIPE SECTION	MAX PIPE LENGTH (FT)
MAX SUPPLY LINE TO FIRST OVERLAPPING NOZZLE	42
OVERLAPPING NOZZLE APPLIANCE BRANCH	10
DEDICATED NOZZLE APPLIANCE BRANCH	10

- LEGEND - FIRE CABINET TANK SYSTEM
- 4 GALLON TANK.
 - PRIMARY ACTUATOR RELEASE.
 - SECONDARY ACTUATOR RELEASE.
 - PRESSURE SUPERVISION SWITCH.
 - PRIMARY HOSE ASSEMBLY.
 - SECONDARY HOSE ASSEMBLY.
 - REMOTE MANUAL ACTUATION DEVICE.



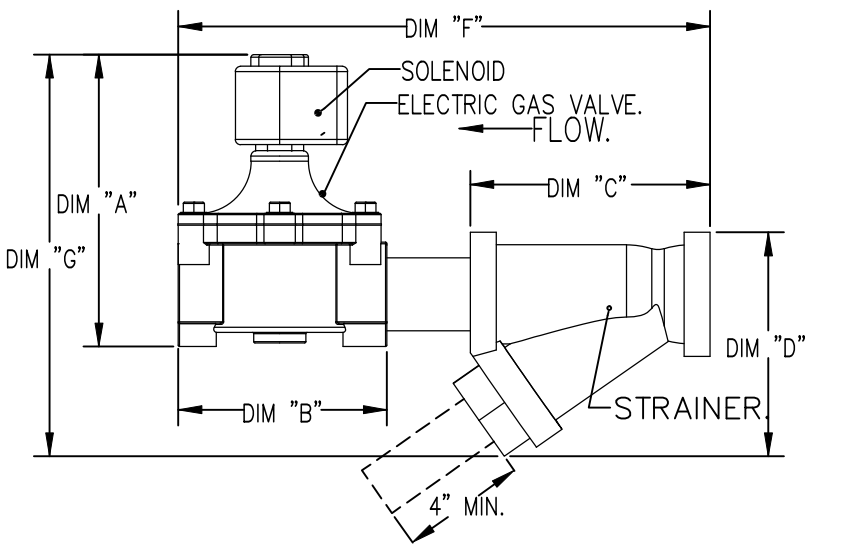
SECTION VIEW - MODEL 5424ND-2-ACSP-F HOOD - #1

GAS VALVES AND STRAINERS																	
TYPE	SIZE	VOLTAGE	GAS VALVE SIZING			GAS VALVE DIMENSIONS						INSTALLATION			PART NUMBERS		
			MIN. INLET PRESSURE	MAX. INLET PRESSURE	FLOW AT 1 IN.W.C. DROP NATURAL GAS	DIM "A"	DIM "B"	DIM "C"	DIM "D"	DIM "E"	DIM "F"	DIM "G"	PIPE ORIENTATION	GAS VALVE PART NUMBER	STRAINER PART NUMBER	GAS VALVE/STRAINER KIT NUMBER	
ELECTRICAL	1-1/2"	24 VDC	0 PSIG (0 IN.W.C.)	5 PSIG (138 IN.W.C.)	2,400,000 BTU/HR	7-5/8"	6-3/8"	5-3/4"	6-3/16"	14-1/8"	12-5/16"	HORIZONTAL	8214276-24VDC	4417967	(SEE SPEC)-1/2"-24		

ELECTRIC GAS VALVES ONLY SOLIDOD ORIENTATION
 3/4"-2" 120VAC GAS VALVES CAN BE MOUNTED WITH THE SOLIDOD IN ANY POSITION AT OR ABOVE HORIZONTAL. 2 1/2"-3" 120VAC GAS VALVES MUST BE MOUNTED WITH THE SOLIDOD VERTICAL AND UPRIGHT.
 240VAC GAS VALVES MUST BE MOUNTED WITH THE SOLIDOD VERTICAL AND UPRIGHT.

ALL GAS VALVES/STRAINERS
 PROPER CLEARANCE MUST BE PROVIDED IN ORDER TO SERVICE THE STRAINERS. A MINIMUM OF 4" CLEARANCE DISTANCE MUST BE PROVIDED AT THE BASE OF THE STRAINER. CUSTOMER MUST VERIFY BTU CONSUMPTION AS WELL AS PRESSURE RATING, SPECIFIC GRAVITY OF NATURAL GAS = 0.64, SPECIFIC GRAVITY OF LP = 1.52.

CALCULATIONS
 TO CALCULATE GAS FLOW FOR OTHER THAN 1 IN.W.C. PRESSURE DROP: NEW BTU/HR = (BTU/HR AT 1 IN.W.C. PRESSURE DROP) X NEW PRESSURE DROP^{0.85}
 TO CALCULATE GAS FLOW FOR OTHER THAN 0.64 SPECIFIC GRAVITY: NEW BTU/HR = (BTU/HR AT 0.64) X (0.64 / NEW SPECIFIC GRAVITY)^{0.85}



REVISIONS

DESCRIPTION	DATE:

CAPTIVE

Highwoods Group

4641 Paragon Park Rd., Raleigh, NC, 27616 PHONE: (919) 975 - 0420 FAX: 9198750577 EMAIL: reg40@captiveware.com

www.captiveware.com

CHIPOTLE LAMB & AZURE #5044 R1

North Las Vegas, NV, 89115

DATE: 4/14/2025

DWG.#: 7466252

DRAWN BY: JMB-40

SCALE: 1/2" = 1'-0"

MASTER DRAWING

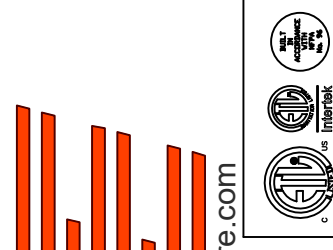
SHEET NO. 4

EXHAUST FAN INFORMATION – JOB#7466252

FAN UNIT NO	TAG	QTY	FAN UNIT MODEL #	MANUFACTURER	CFM	ESP	RPM	MOTOR ENCL	HP	BHP	PHASE	VOLT	FLA	DISCHARGE VELOCITY	WEIGHT (LBS)	SDNES
1	EF-1	1	DUI80HFA	CAPTIVEAIRE	2550	1.450	1249	TEFC,PREMIUM	2.000	1.2770	3	208	7.3	589 FPM	199	17.7
2	EF-2	1	DR12HFA	CAPTIVEAIRE	150	0.600	1327	TEAD-ECM	0.250	0.0970	1	115	2.9		50	6.6

REVISIONS

DESCRIPTION	DATE:



www.captiveaire.com
4641 Paragon Park Rd., Raleigh, NC, 27616 PHONE: (919) 875 - 0420 FAX: 9198750577 EMAIL: reg40@captiveaire.com

CHIPOTLE LAMB & AZURE #5044 R1
North Las Vegas, NV, 89115

DATE: 4/14/2025

DWG.#:
7466252

DRAWN BY: JMB-40

SCALE:
3/4" = 1'-0"

MASTER DRAWING

SHEET NO.
5

DOAS/RTU FAN SCHEDULE -- JOB#7466252

FAN INFORMATION				ELECTRICAL INFORMATION										COOLING INFORMATION						REHEAT INFORMATION				GAS HEAT INFORMATION				ABL MINIMUM ROOM VOLUME			NOTES									
FAN UNIT NO.	TAG	QTY	DOAS/RTU MODEL #	MANUFACTURER	BLOWER	RETURN AIR CFM	MAX OUTSIDE AIR CFM	TOTAL CFM	WEIGHT (LBS)	ESP	HP	PHASE	VOLTS	MCA	MDCP	OUTSIDE AIR DB	MIXED AIR WB	LEAVING AIR DB	WB	WB	WB	DP	TOTAL	SENS.	IEER	ISMRE	DISCHARGE DB	WB	CAPACITY DESIRED	MAX		MOISTURE REMOVAL RATE	GAS TYPE	INPUT BTU/H	OUTPUT BTU/H	TEMP RISE	REQUIRED INPUT GAS PRESSURE	ROOM AREA (FT ²)	AIRFLOW (CFM)	HEIGHT (FT)
3	MUA - 1	1	CAS-HVAC1-1150-18-5T-MPU	CAPTIVEAIRE	18P-1	0	1300	1300	1224	0.500	2.00	3	208	29A	35A	92.7°F	72.4°F	92.7°F	72.4°F	58.6°F	58.5°F	58.5°F	63.7 MBH	48.4 MBH	17.9	6.1	70.0°F	62.5°F	15.5 MBH	53 MBH	12.6 LBS/HR	NATURAL	90399	73283	52°F	7 IN. W.C. - 14 IN. W.C.	206.2	357	7.2	1,2,3,4,5,6,7,8,9,10,11,12,13,14,15,16,17

NOTES:
 1. INVERTER SCROLL COMPRESSOR WITH INTEGRATED OIL SENSOR. DIGITAL OR STAGED SCROLL NOT AN APPROVED EQUAL.
 2. DIRECT DRIVE PLENUM BLOWER. BELT DRIVEN BLOWERS ARE NOT ACCEPTABLE.
 3. INTEGRATED MONITORING VIA CELLULAR CONNECTION BY MANUFACTURER.
 4. REFRIGERATION PRESSURE MONITORING ON HIGH AND LOW PRESSURE SIDE OF SYSTEM INCLUDED THROUGH DIGITAL INTERFACE.
 5. EC MOTOR CONDENSING FANS.
 6. ELECTRONIC EXPANSION VALVE. TXV NOT ACCEPTABLE.
 7. SUCTION LINE ACCUMULATOR.
 8. FACTORY COMMISSIONING WITH 5 YEAR PARTS WARRANTY. 25 YEAR WARRANTY ON STAINLESS STEEL HEAT EXCHANGER.
 9. AVERAGING INTAKE, EVAP AND DISCHARGE TEMPERATURE SENSORS (DISCHARGE SENSOR TO BE FACTORY MOUNTED WITHIN UNIT).
 10. 81% EFFICIENT FURNACE. WITH MODULATING INDUCER TO MAINTAIN CONSTANT COMBUSTION EFFICIENCY ACROSS FIRING RANGE. 61 TURNDOWN WITH NG AND 51 TURNDOWN WITH LP.
 11. SUPPLY CFM MONITORING INTEGRAL TO UNIT WITH CFM MEASUREMENT INCLUDED THROUGH DIGITAL INTERFACE.
 12. FULLY MODULATING HOT GAS REHEAT.
 13. 15 DEGREE LOW AMBIENT OPERATION.
 14. HAIL GUARD FOR CONDENSING COIL.
 15. 1" EXTERIOR DUAL-WALL CONSTRUCTION W/ R-4.3 INSULATION-MINIMUM 24GA EXTERIOR W/ 18GA BASE.
 16. DOWN DISCHARGE/NO RETURN.
 17. MINIMUM ROOM AREA ASSUMED 7'2" SUPPLY DIFFUSER HEIGHT AND IS CALCULATED PER UL60395-2-40 4TH ED. VALUES BASED ON FACTORY CHARGE. ACTUAL SITE CHARGE MAY DIFFER.

FAN OPTIONS

FAN UNIT NO.	TAG	QTY	DESCRIPTION
1	EF-1	1	GREASE BOX
		1	REMOVE HINGE KIT LABEL FROM THE FAN BASE
2	EF-2	1	2 YEAR PARTS WARRANTY
		1	1 1/2" BDD DAMPER
3	MUA - 1	1	ECM WIRING PACKAGE - MANUAL DR 0-10VDC REFERENCE SPEED CONTROL -RTC- (TELCO MOTOR), CCV ROTATION
		1	2 YEAR PARTS WARRANTY
		1	INLET PRESSURE GAUGE, 0-35"
		1	MANIFOLD PRESSURE GAUGE, 0 TO 10" WC, 1 FURNACE
		1	COOLING OVERRIDE
		1	RTU BLOWER DOOR SWITCH
		1	2" MERV 13 FILTERS FOR RTU (QTY. 4)
		1	2" MERV 8 FILTERS FOR RTU (QTY. 4)
		1	TOTAL CFM MONITORING
		1	RTU DOWN DISCHARGE
		1	RTU FIXED 100% DA INTAKE CONTROL
		1	DISCHARGE FIRESTAT SET TO 240°F
		1	INTAKE FIRESTAT SET TO 135°F
		1	RTU NO RETURN - 100% DA - MPU
		1	2" METAL MESH FILTERS FOR RTU OUTDOOR INTAKE
		1	RTU CURB BUCH HANGER
		1	SHIP LOOSE GAS STRAINER 3/4"
		1	RTU HAIL GUARD
		1	FREEZE/STAT
		1	VAV PACKAGE W/ 0-10VDC INPUT CONTROL (S71 VFD INCLUDED)
1	VFD FACTORY MOUNTED AND WIRED IN RTU COMMERCIAL CONTROL VESTIBULE		
1	5 TON MODULATING COOLING OPTION, 208/230V, R454B REFRIGERANT, VARIABLE SPEED COMPRESSOR, ECM CONDENSING FAN		
1	LDW AMBIENT COOLING OPERATION - DOWN TO OF AMBIENT		
1	R454B LEAK DETECTOR OPTION FOR RTUS		
1	5 TON MODULATING REHEAT OPTION - DISCHARGE DEWPOINT CONTROL - R454B		
1	SINGLE POINT ELECTRICAL CONNECTION FOR RTU, 750VA TRANSFORMER USED. IF A NON-DCV PREWIRE CONTROL THIS UNIT, THE RES, HAZ, MA, OR EC PREWIRE OPTION MUST BE SELECTED. DOES NOT PROVIDE SUPPLY STARTER IN PREWIRE		
1	5 YEAR ENTIRE UNIT PARTS WARRANTY, 10 YEAR ENTIRE UNIT PARTS WARRANTY WITH REMOTE MONITORING AND CAPTIVEAIRE SERVICE CONTRACT, 25 YEAR STAINLESS STEEL FURNACE PARTS WARRANTY (SEE ADDITIONAL DETAILS)		
1	EXTERIOR GAS CONNECTION PROVIDED BY FACTORY WITH QUICK SEAL AND ANTI-ROTATION BRACKET		

FAN ACCESSORIES

FAN UNIT NO.	TAG	EXHAUST			SUPPLY			
		GREASE CUP	GRAVITY DAMPER	WALL MOUNT	SIDE DISCHARGE	GRAVITY DAMPER	MOTORIZED DAMPER	WALL MOUNT
1	EF-1	YES						
2	EF-2		YES					

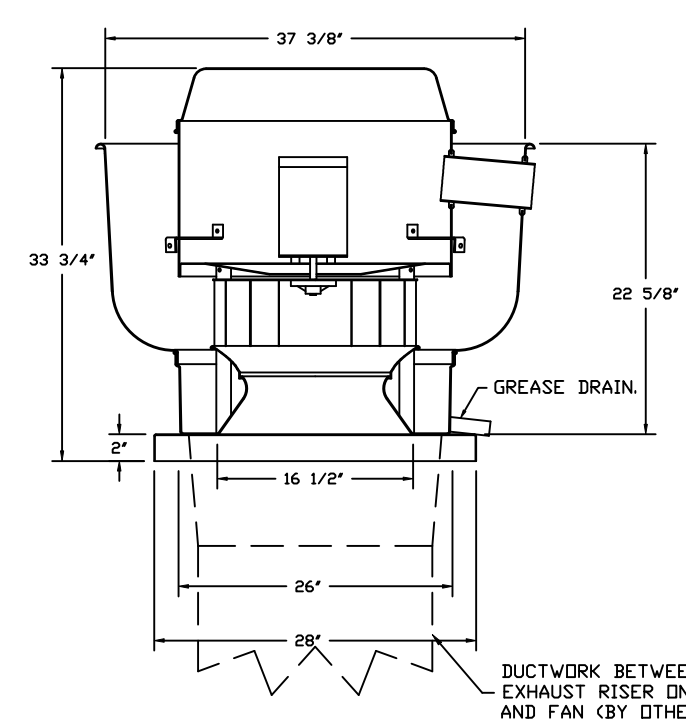
CURB ASSEMBLIES

NO.	IN FAN	TAG	WEIGHT	ITEM	SIZE
1	# 1	EF-1	39 LBS	CURB	26.500"W X 26.500"L X 20.000"H VENTED.
2	# 2	EF-2	31 LBS	CURB	17.500"W X 17.500"L X 26.000"H.
3	# 3	MUA - 1	103 LBS	CURB	41.000"W X 71.000"L X 20.000"H INSULATED.

HMI SCHEDULE

UNIT NUMBER	HMI #	HMI LOCATION	TEMP AVERAGING	MODBUS ADDRESS
FAN #3	HMI #1 - UNIT	IN UNIT	NOT AVERAGED	55

FAN #1 DUB80FA - EXHAUST FAN GF-12

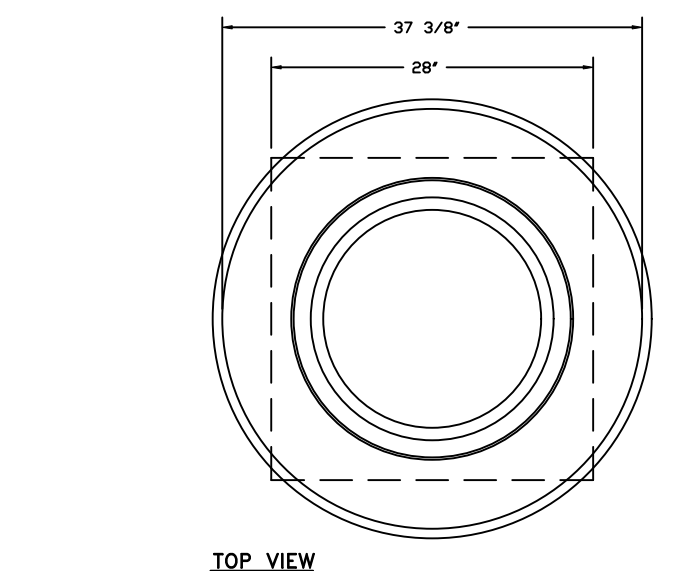
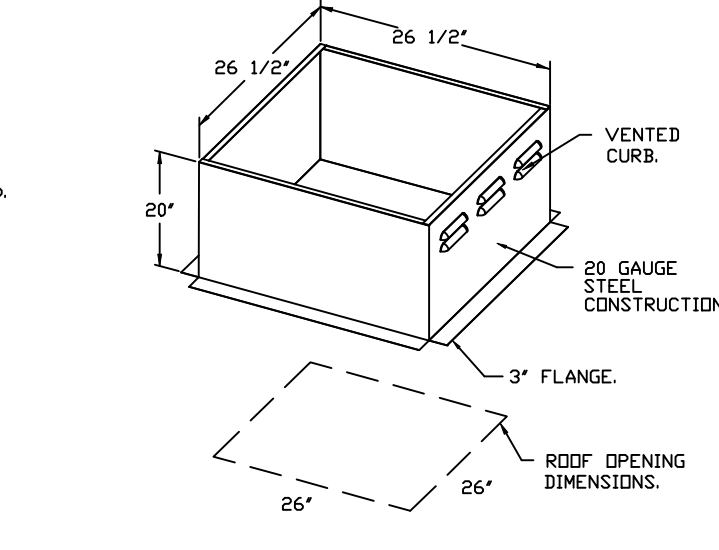


FEATURES:
 - DIRECT DRIVE CONSTRUCTION (NO BELTS/PULLEYS).
 - ROOF MOUNTED FANS.
 - RESTAURANT MODEL.
 - UL705 AND UL768 AND UL-C-5645
 - VARIABLE SPEED CONTROL.
 - INTERNAL WIRING.
 - THERMAL OVERLOAD PROTECTION (SINGLE PHASE).
 - HIGH HEAT OPERATION 300°F (149°C).
 - GREASE CLASSIFICATION TESTING.
 - NEMA 3R SAFETY DISCONNECT SWITCH.

NORMAL TEMPERATURE TEST
 EXHAUST FAN MUST OPERATE CONTINUOUSLY WHILE EXHAUSTING AIR AT 300°F (149°C) UNTIL ALL FAN PARTS HAVE REACHED THERMAL EQUILIBRIUM, AND WITHOUT ANY DEGRADING EFFECTS TO THE FAN WHICH WOULD CAUSE UNSAFE OPERATION.

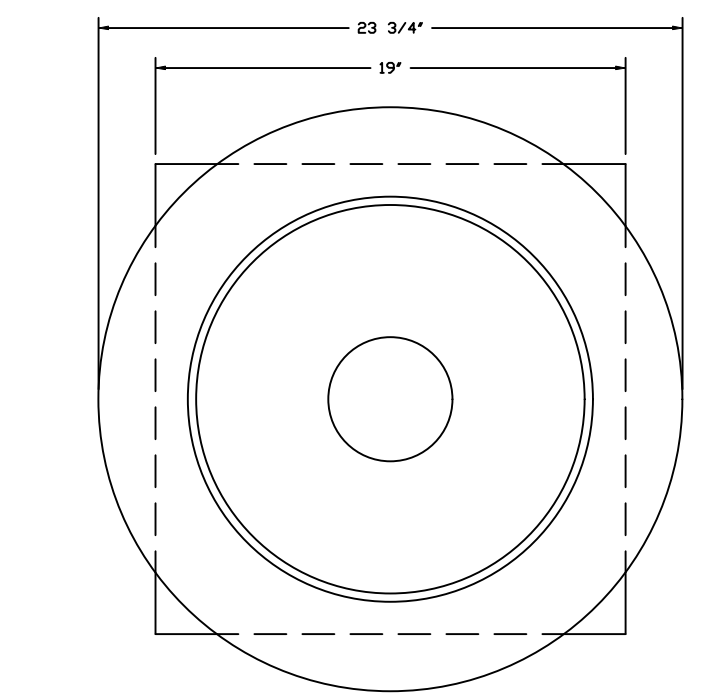
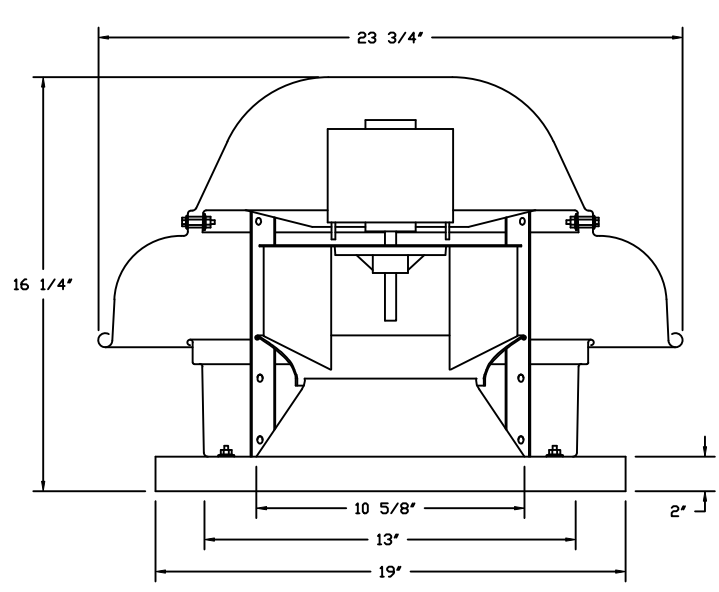
ABNORMAL FLARE-UP TEST
 EXHAUST FAN MUST OPERATE CONTINUOUSLY WHILE EXHAUSTING BURNING GREASE VAPORS AT 600°F (316°C) FOR A PERIOD OF 15 MINUTES WITHOUT THE FAN BECOMING DAMAGED TO ANY EXTENT THAT COULD CAUSE AN UNSAFE CONDITION.

OPTIONS
 - GREASE BOX.
 - REMOVE HINGE KIT LABEL FROM THE FAN BASE.
 - 2 YEAR PARTS WARRANTY.



TOP VIEW

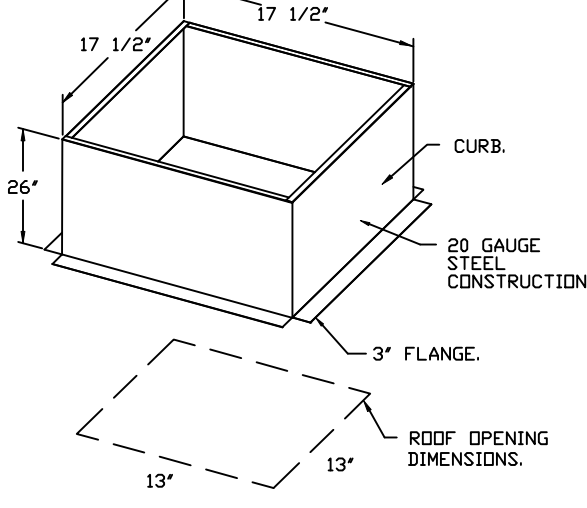
FAN #2 DR18FA - EXHAUST FAN GF-22



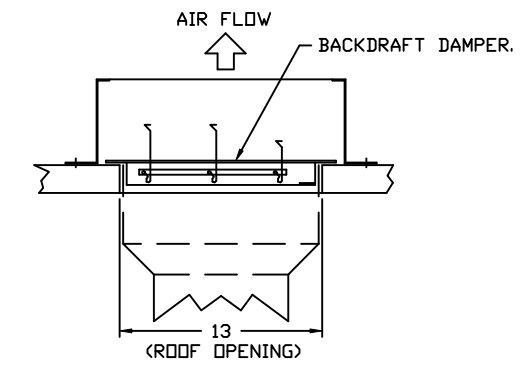
TOP VIEW

FEATURES:
 - DIRECT DRIVE CONSTRUCTION (NO BELTS/PULLEYS).
 - ROOF MOUNTED FANS.
 - UL705.
 - SAFETY DISCONNECT.
 - STANDARD BIRD SCREEN.
 - SPEED CONTROL.
 - THERMAL OVERLOAD PROTECTION (SINGLE PHASE).

OPTIONS
 - 1 1/2" BDD DAMPER.
 - ECM WIRING PACKAGE - MANUAL DR 0-10VDC REFERENCE SPEED CONTROL.
 - RTC- (TELCO MOTOR), CCV ROTATION.
 - 2 YEAR PARTS WARRANTY.



BACKDRAFT DAMPER INSTALLATION



REVISIONS

DESCRIPTION	DATE:

CAPTIVEAIRE

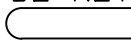
Highwoods Group
 4641 Paragon Park Rd., Raleigh, NC, 27616 PHONE: (919) 975 - 0420 FAX: 9198750577 EMAIL: reg40@captivaire.com

CHIPOTLE LAMB & AZURE #5044 R1
 North Las Vegas, NV, 89115

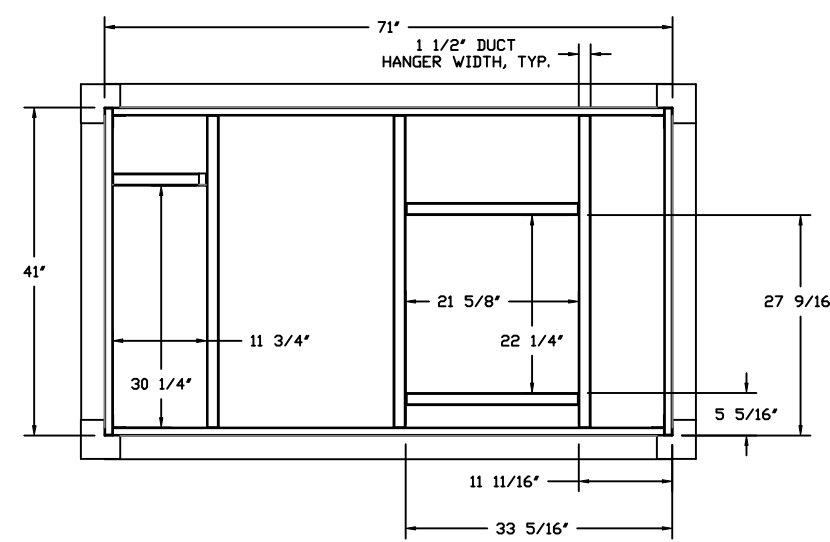
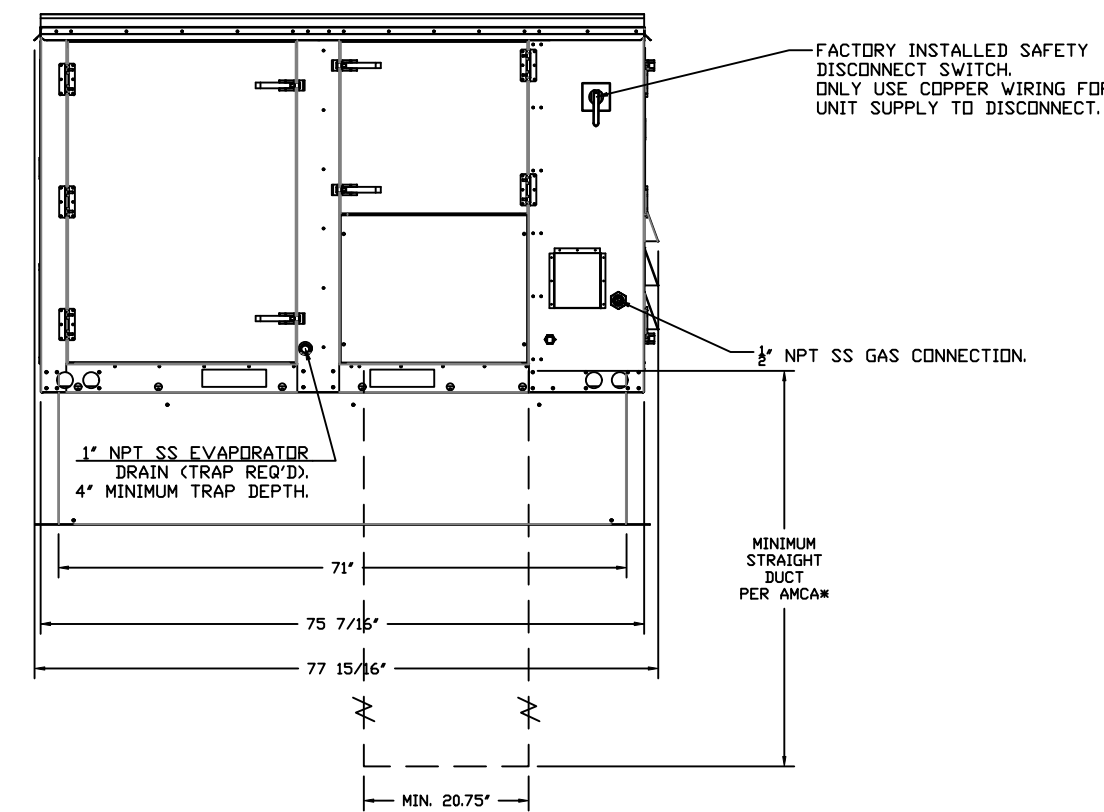
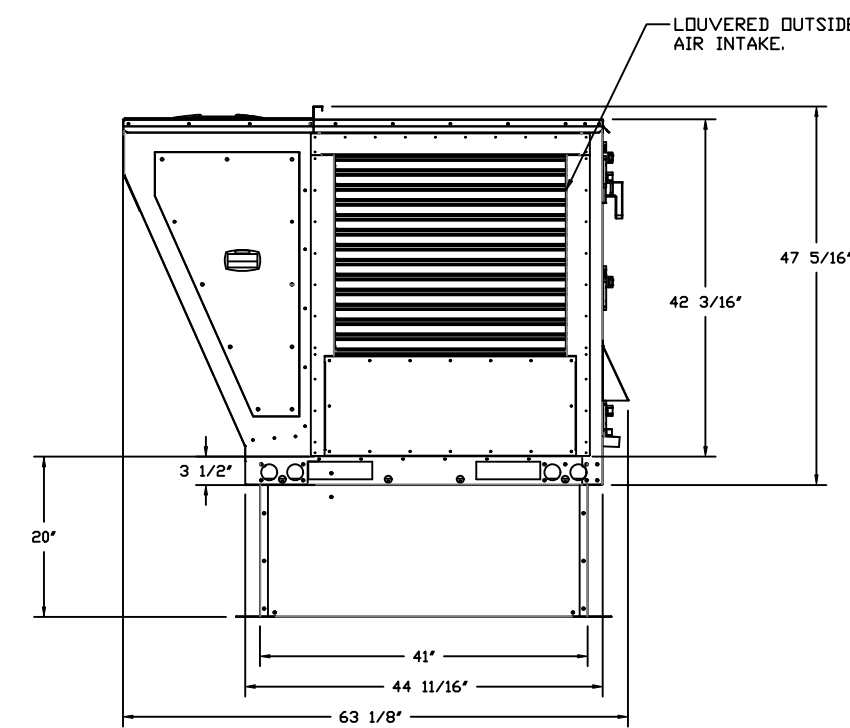
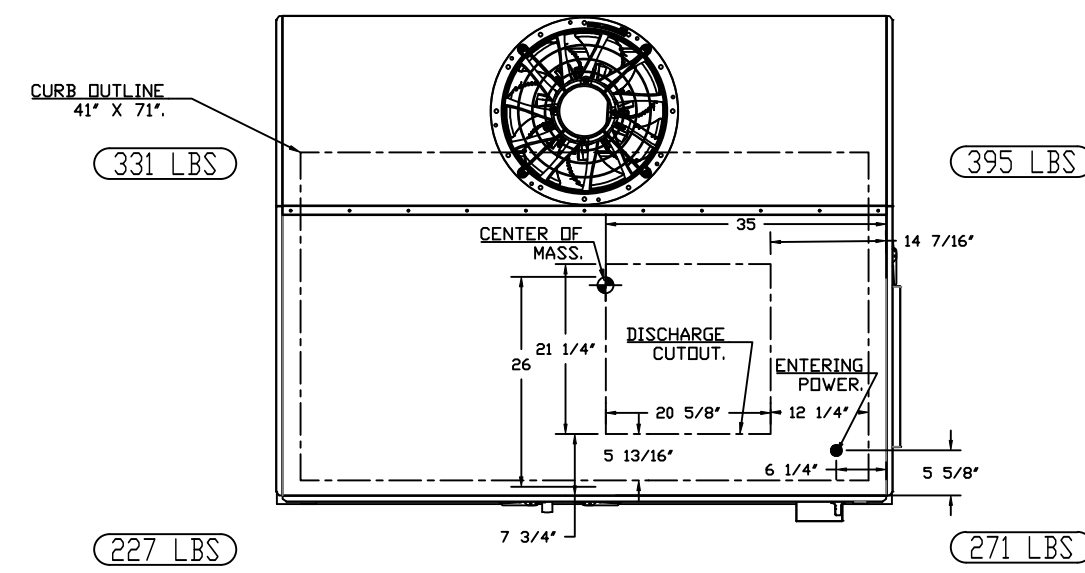
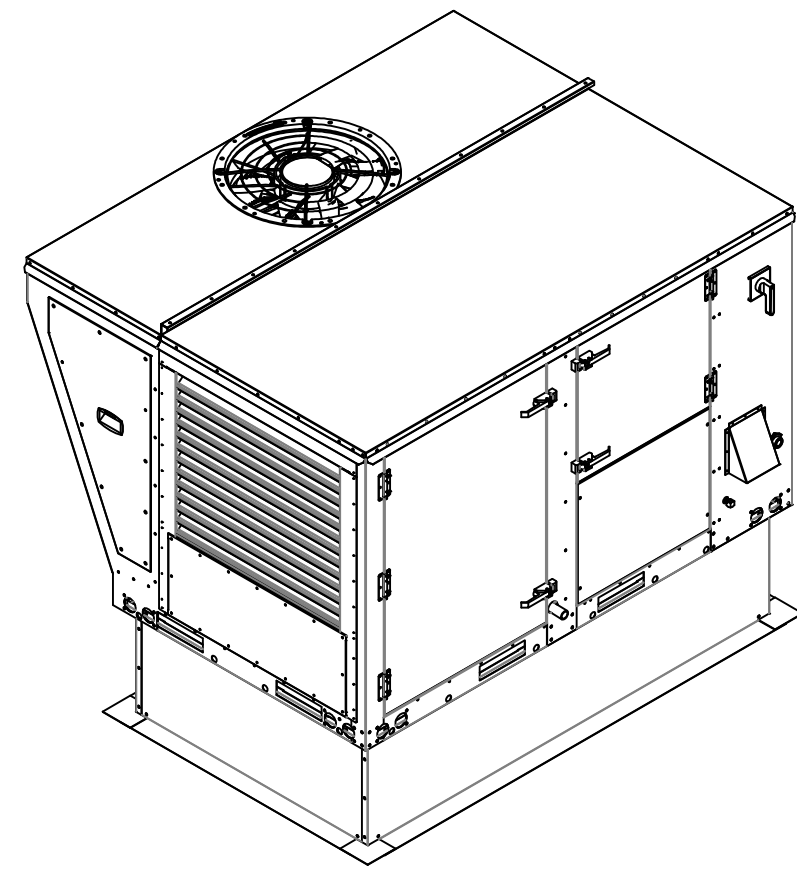
DATE: 4/14/2025
 DWG.#: 7466252
 DRAWN BY: JMB-40
 SCALE: 1/2" = 1'-0"
 MASTER DRAWING

SHEET NO. 6

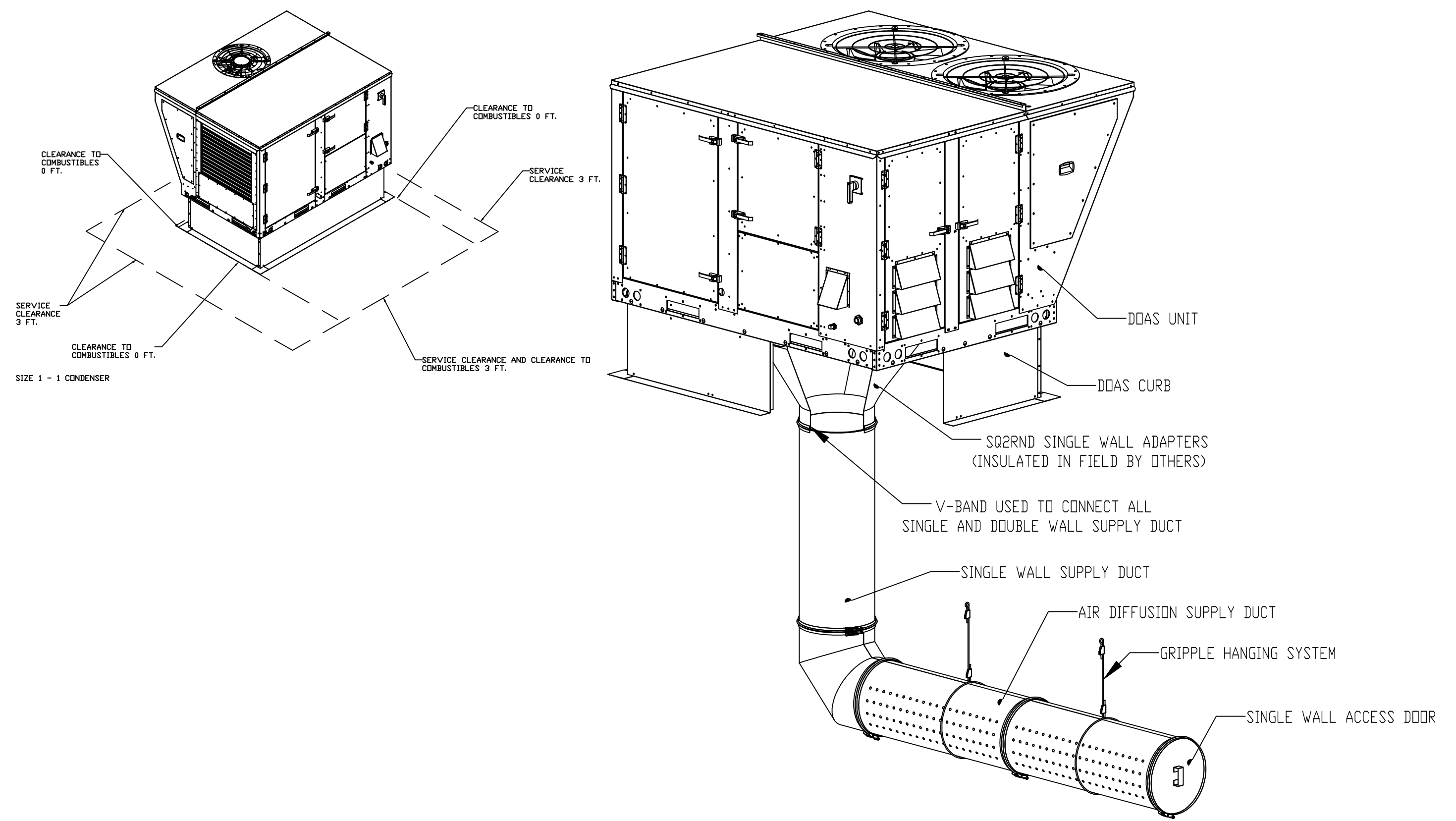
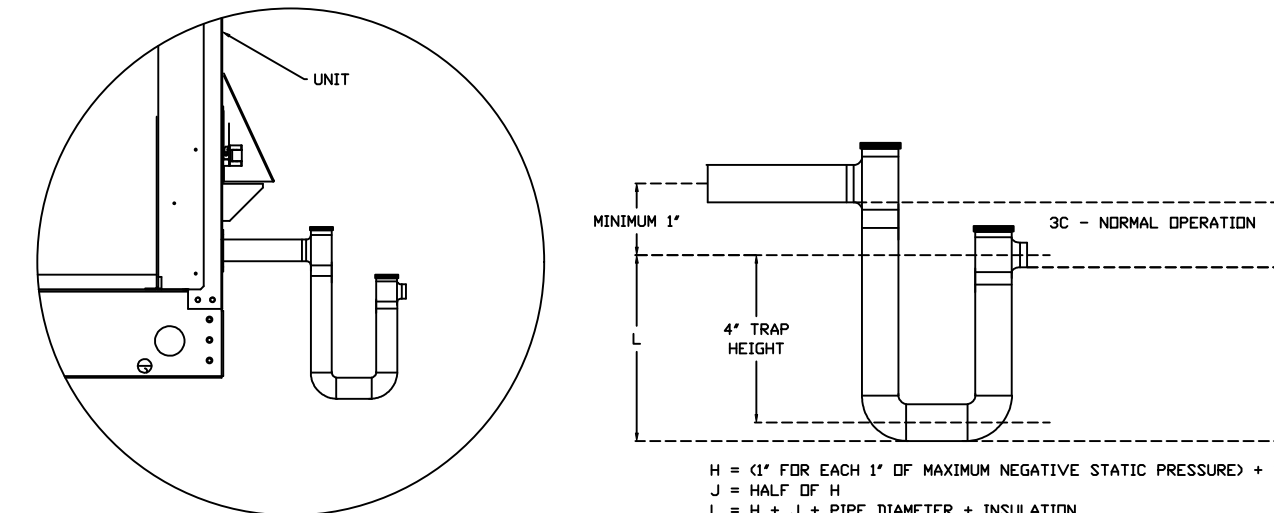
NOTES:

- DO NOT OBSTRUCT OUTSIDE AIR INLET, OUTSIDE AIR COIL OR OUTSIDE AIR FAN.
-  DENOTES CORNER WEIGHT.
- ROOF OPENING MUST BE 2" SMALLER THAN CURB DIMENSIONS IN BOTH DIRECTIONS.
- CONNECTION FROM BREAKER TO UNITS SAFETY DISCONNECT SWITCH TO BE COPPER WIRE ONLY.
- EXTERIOR GAS CONNECTION PROVIDED BY FACTORY WITH QUICK SEAL AND ANTI-ROTATION BRACKET.

*NOTE: SUPPLY DUCT MUST BE INSTALLED TO MEET SMACNA STANDARDS. A MINIMUM STRAIGHT DUCT LENGTH MUST BE MAINTAINED DOWNSTREAM OF UNIT DISCHARGE AS OUTLINED IN AMCA PUBLICATION 201. WHEN USING RECTANGULAR DUCTWORK, ELBOWS MUST BE RADIUS THROAT, RADIUS BACK WITH TURNING VANES. FLEXIBLE DUCTWORK AND SQUARE THROAT/SQUARE BACK ELBOWS SHOULD NOT BE USED. ANY TRANSITION AND/OR TURNS IN THE DUCTWORK WILL CAUSE SYSTEM EFFECT. SYSTEM EFFECT WILL DRASTICALLY INCREASE STATIC PRESSURE AND REDUCE AIRFLOW. DO NOT RELY ON UNIT TO SUPPORT DUCT IN ANY WAY. FAILURE TO PROPERLY SIZE DUCTWORK MAY CAUSE SYSTEM EFFECTS AND REDUCE PERFORMANCE OF THE EQUIPMENT. SUGGESTED STRAIGHT DUCT SIZE IS 20.75" x 21.5".



RTU CONDENSATE DRAIN TRAP DETAIL



AIR DIFFUSION SUPPLY DUCT SPECIFICATIONS:
 PROVIDE AIR DIFFUSION SUPPLY DUCT EQUAL TO CAPTIVEAIRE SYSTEMS MODEL DW-S0(K)C, DW-S90(K)C, & DW-S180(K)C. THREE DISTINCT HOLE PATTERN OPTIONS TO COVER A VARIETY OF CEILING HEIGHTS. NO ADDITIONAL DIFFUSERS REQUIRED, AS THE DUCT ITSELF PROVIDES AIR DIFFUSION. MADE OF HIGH QUALITY STAINLESS STEEL DESIGNED TO LAST 20+ YEARS. HIGH INDUCTION SUPPLY DUCT IS CONSTRUCTED USING 24 GAUGE, 430 SS - 5' THRU 24'. HIGH INDUCTION SUPPLY DUCT IS CONSTRUCTED USING 20 GAUGE, 430 SS - 26' THRU 36'. QUICK ONSITE ASSEMBLY USING EPDM GASKETS & UNIVERSAL V-BANDS. DOUBLE WALL SUPPLY DUCT AVAILABLE FOR INTERIOR AND EXTERIOR SPACES, EITHER CONDITIONED OR UNCONDITIONED. DOUBLE WALL SUPPLY DUCT AVAILABLE IN DW-1S, DW-2S, & DW-3S TO MEET SPECIFIC REGIONAL 'R' VALUE REQUIREMENTS.

Insulation R-Value Recommendations		
Supply Duct Type	Minimum R-value	Space Type
Single Wall - S & -HC	N/A	Conditioned Space Only
Double Wall - 1S	R-4	Unconditioned Interior Space Only
Double Wall - 2S	R-8	Unconditioned Space Climate Zones 1-4
Double Wall - 3S	R-12	Unconditioned Space Climate Zones 5-8

DOUBLE WALL SUPPLY DUCT IS INSULATED WITH A 24 GAUGE 430 STAINLESS OUTER SHELL. AIR DIFFUSION SUPPLY DUCT COMPLIES WITH SMACNA (SHEET METAL AND AIR CONDITIONING CONTRACTORS) BEST PRACTICES. POSITIONING OF SPRINKLERS TO AVOID OBSTRUCTION TO DISCHARGE, SEE NFPA 13, TABLE 8.12.5.1.1.

TYPICAL DDAS/RTU ROOF MOUNTING INSTALLATION INSTRUCTIONS

- SECURE THE CURB TO THE ROOF FRAMING MEMBERS BY DRILLING 1/4" PILOT HOLES IN THE CURB FLANGES AT LOCATIONS SHOWN IN THE DIAGRAM BELOW. USING 3/8" X 2" ZINC PLATED STEEL LAG BOLTS, AND ZINC PLATED WASHERS, SCREW THROUGH THE CURB FLANGES AND INTO THE ROOF FRAMING MEMBERS. A MINIMUM OF (5) LAG BOLTS ON EACH SHORT SIDE, AND (7) LAG BOLTS ON EACH LONG SIDE IS REQUIRED.
- SECURE THE UNIT BASE TO THE SIDE WALLS OF THE CURB USING (24) 1/4"-14 X 2" SELF-DRILLING, STEEL ZINC PLATED SCREWS. PRE-PUNCHED HOLES HAVE BEEN PROVIDED FOR EACH SCREW LOCATION.

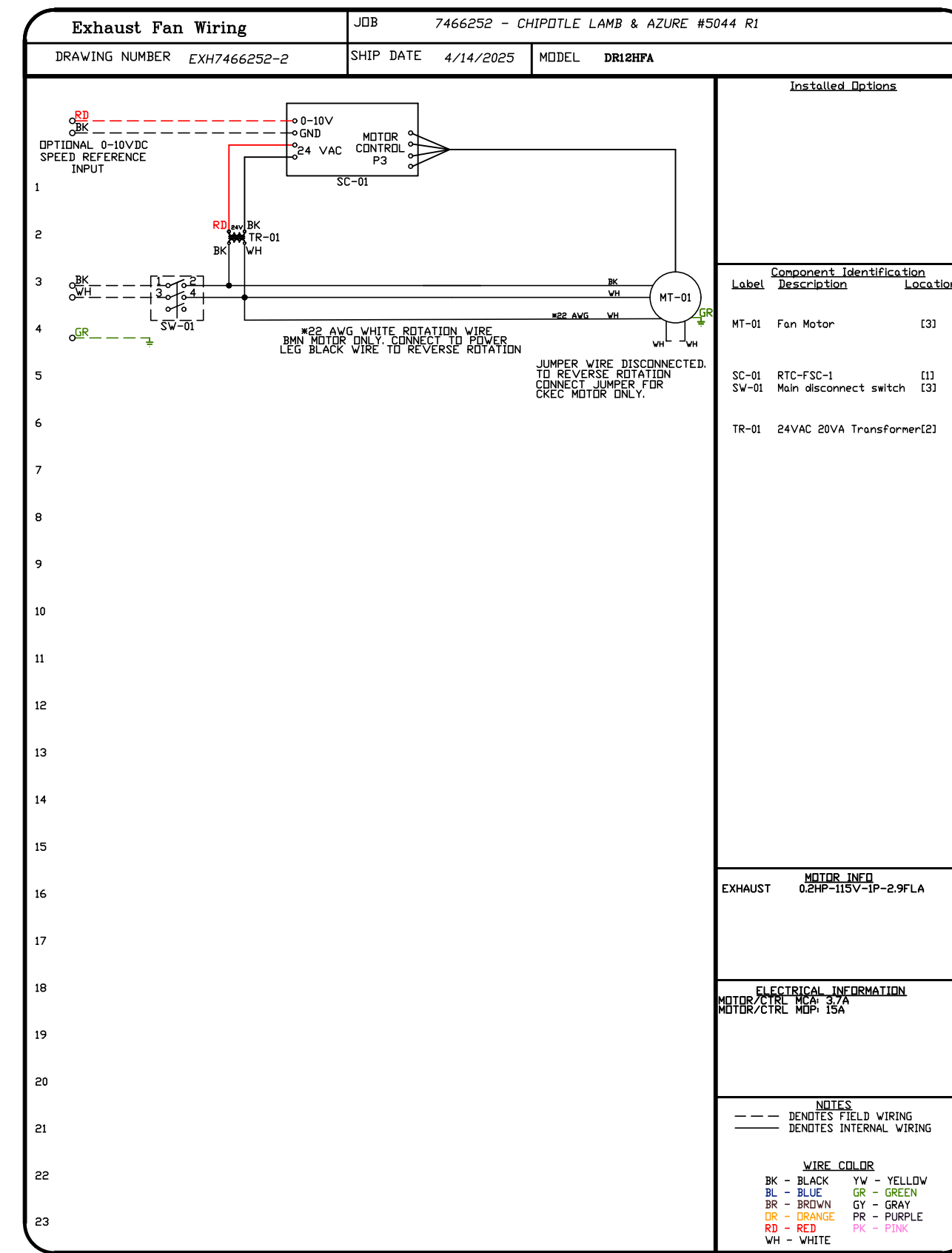
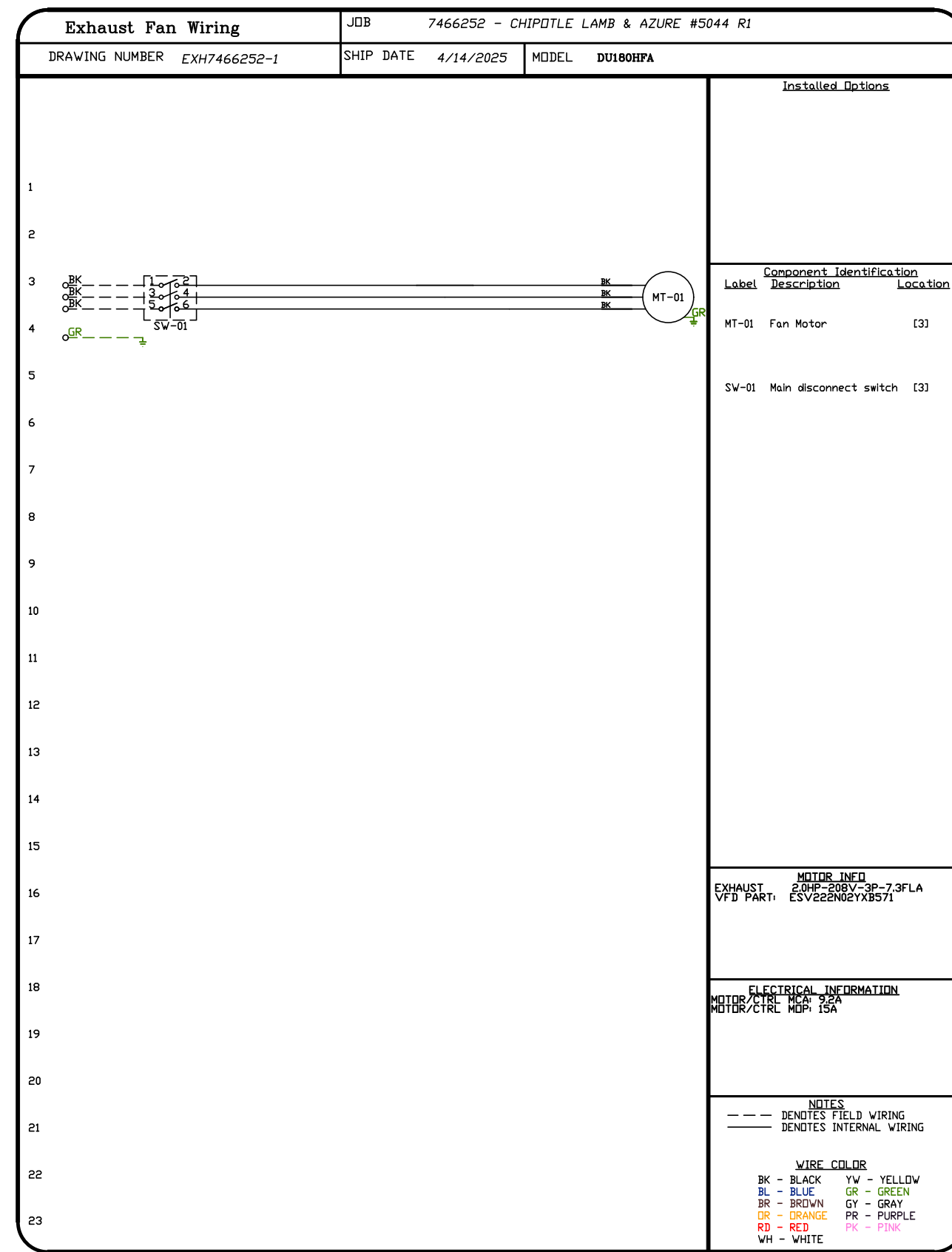
REVISIONS	
DESCRIPTION	DATE:

www.captiveaire.com
 Highwoods Group
 4641 Paragon Park Rd., Raleigh, NC 27616 PHONE: (919) 875 - 0420 FAX: 9198750577 EMAIL: reg40@captiveaire.com

CHIPOTLE LAMB & AZURE #5044 R1
 North Las Vegas, NV, 89115

DATE: 4/14/2025
 DWG.#: 7466252
 DRAWN BY: JMB-40
 SCALE: 1/2" = 1'-0"
 MASTER DRAWING

SHEET NO.
7



REVISIONS	
DESCRIPTION	DATE

Highwoods Group

www.captive.com

4641 Paragon Park Rd., Raleigh, NC, 27616 PHONE: (919) 875 - 0420 FAX: 9198750577 EMAIL: reg40@captive.com

CHIPOTLE LAMB & AZURE #5044 R1

North Las Vegas, NV, 89115

DATE: 4/14/2025

DWG.#: 7466252

DRAWN BY: JMB-40

SCALE: 3/4" = 1'-0"

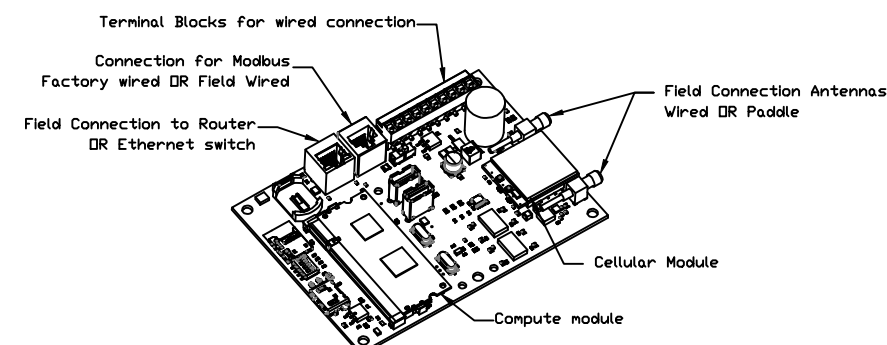
MASTER DRAWING

SHEET NO.

8

ELECTRICAL PACKAGE - JOB#7466252

NO	TAG	PACKAGE #	LOCATION	SWITCHES		OPTION	FANS CONTROLLED					
				LOCATION	QUANTITY		FAN TAG	TYPE	#	HP	VOLT	FLA
1		SC-311110MA	UTILITY CABINET RIGHT	UTILITY CABINET RIGHT	1 LIGHT 1 FAN	SMART CONTROLS THERMOSTATIC CONTROL W/ RELAY ON/OFF WITH SUPPLY	EF-1	EXHAUST	3	2,000	208	7.3
				HOOD # 1			MUA - 1	SUPPLY	3	2,000	208	6.1

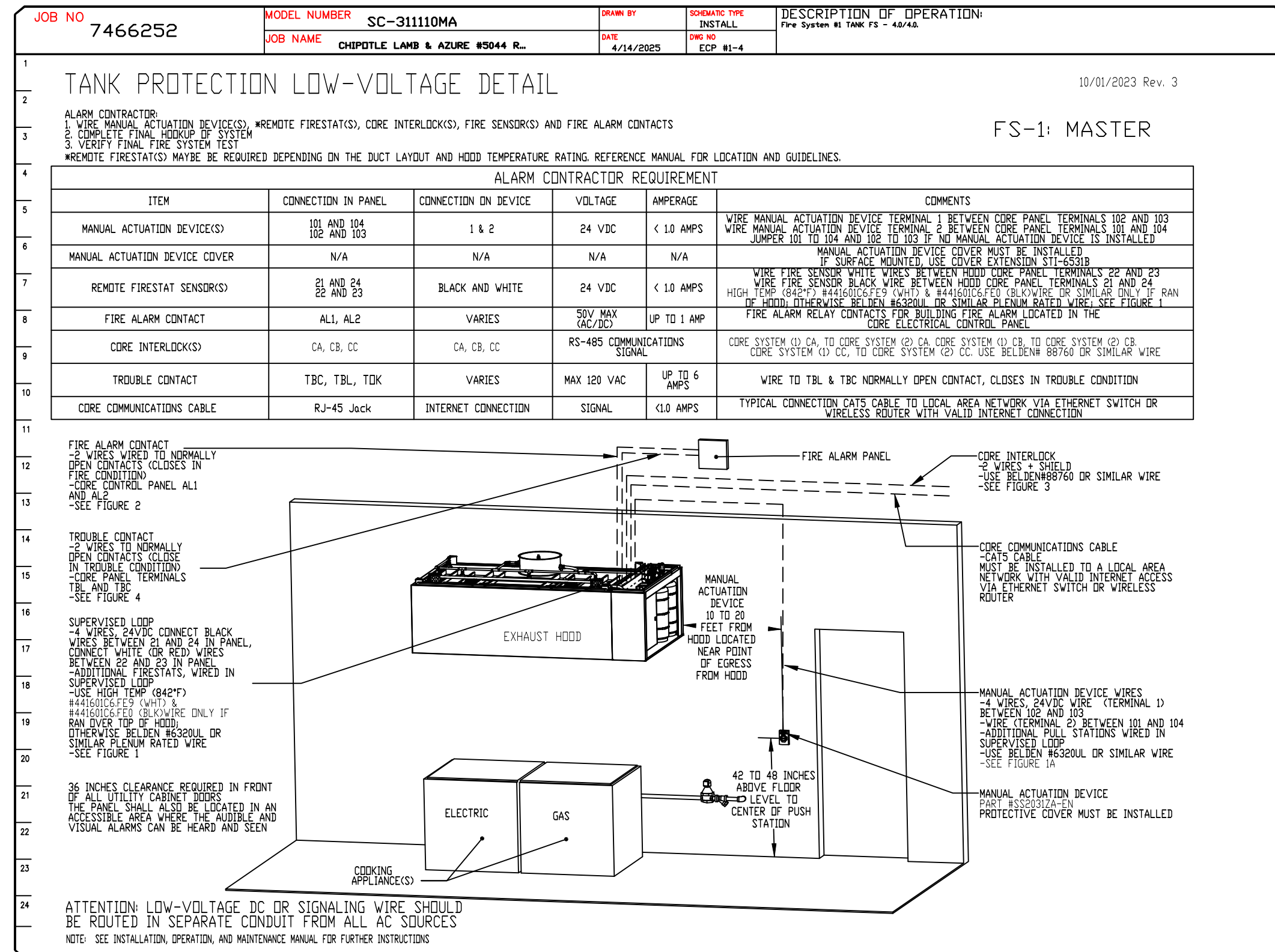
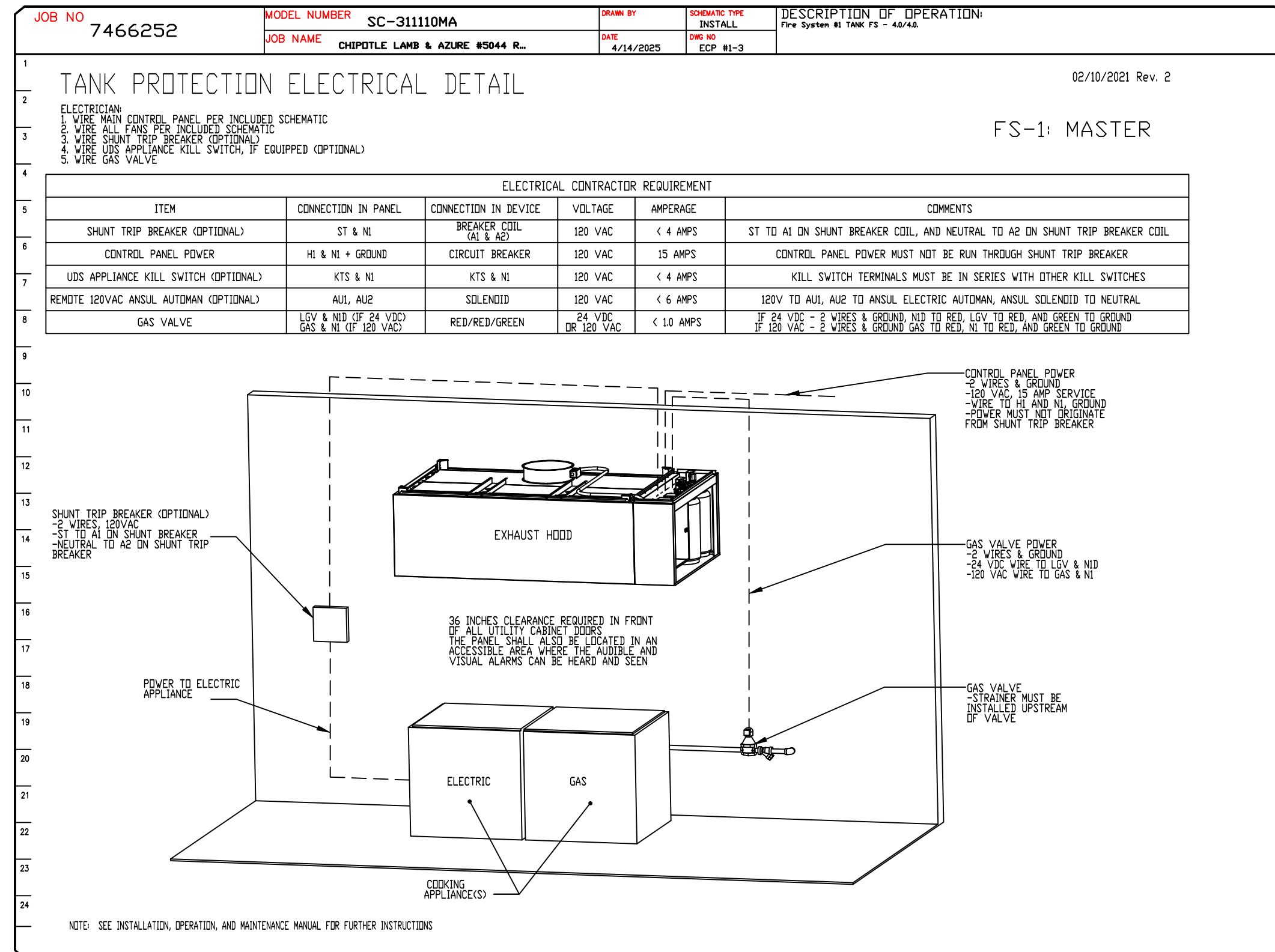
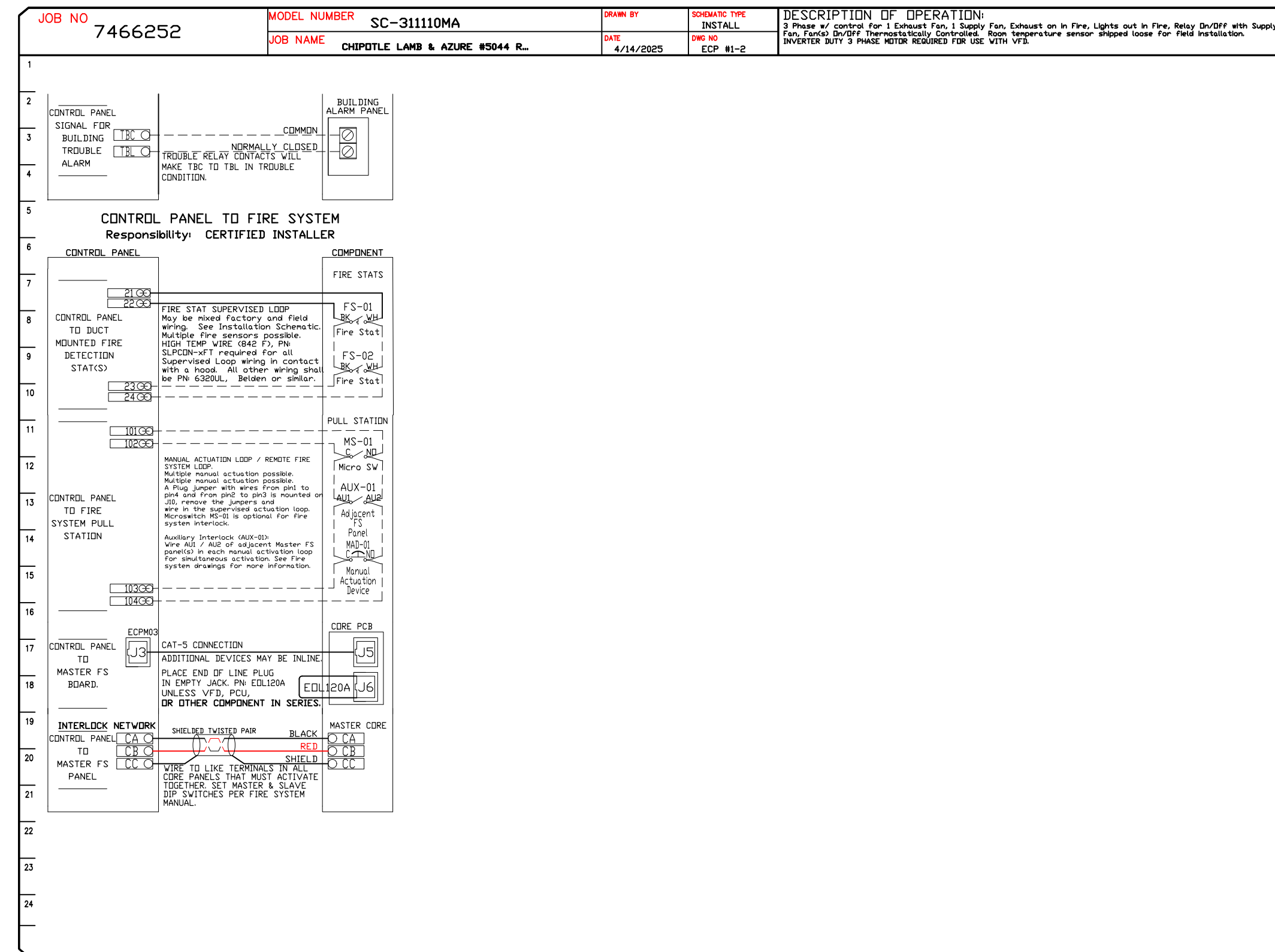
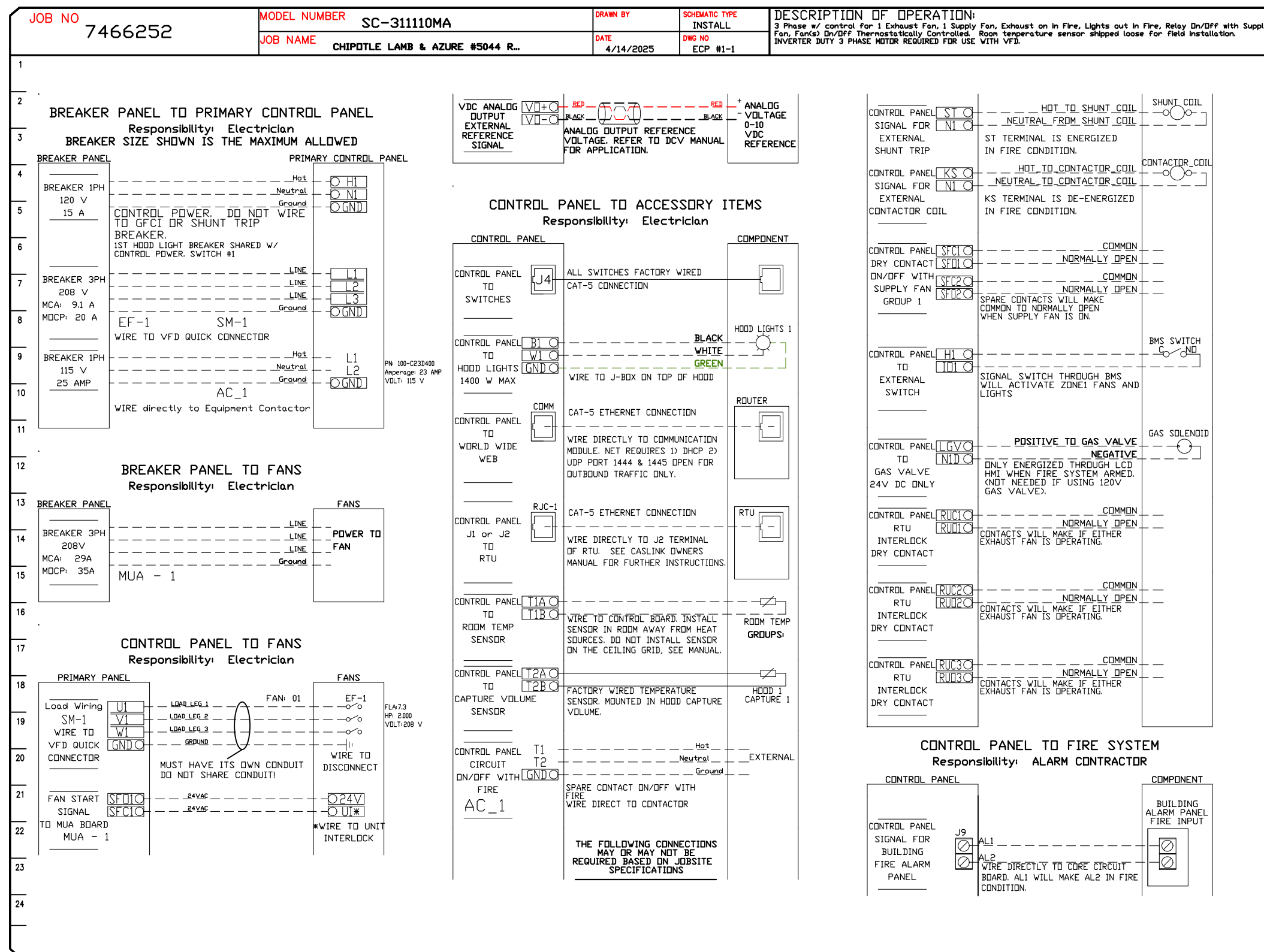


CASlink Monitor and Control

- Hood control panel to support communications to cloud-based Building Management System.
- Hood Control Panel to allow cloud-based Building Management System to monitor real time parameters outlined as **MONITOR** in the points list.
- Hood Control Panel to allow cloud-based Building Management System to control parameters outlined as **CONTROL** in the points list.
- Hood Control Panel to allow cloud-based Building Management System to implement **SYSTEM ECONOMIZER** control strategies for fully integrated Building Management.

MONITORING AND CONTROL POINTS LIST

DCV Packages	Function	SC Packages	Function
Room Temperature	MONITOR	Room Temperature(s)	MONITOR
Duct Temperature(s)	MONITOR	Duct Temperature(s)	MONITOR
MUA Discharge Temperature	MONITOR	MUA Discharge Temperature	MONITOR
Kitchen RTU Discharge Temperature	MONITOR	Kitchen RTU Discharge Temperature	MONITOR
Fan Speed	MONITOR	Controller Faults	MONITOR
Fan Amps	MONITOR	Fan Faults	MONITOR
Fan Power	MONITOR	Fan Status	MONITOR
VFD Faults	MONITOR	PCU Faults	MONITOR
Controller Faults	MONITOR	PCU Filter Clog Percentages	MONITOR
Fan Faults	MONITOR	Pipe Condition	MONITOR
Fan Status	MONITOR	COBE Fire System	MONITOR
PCU Faults	MONITOR	Building Pressures	MONITOR
PCU Filter Clog Percentages	MONITOR	Pans Status(s)	MONITOR & CONTROL
Pipe Condition	MONITOR	Lights Button(s)	MONITOR & CONTROL
COBE Fire System	MONITOR	Wash Button	MONITOR & CONTROL
Building Pressures	MONITOR		
Prep Time Button	MONITOR & CONTROL		
Pans Button	MONITOR & CONTROL		
Lights Button	MONITOR & CONTROL		
Wash Button	MONITOR & CONTROL		



REVISIONS

NO.	DESCRIPTION	DATE

CHIPOTLE LAMB & AZURE #5044 R1

Highwoods Group

4641 Paragon Park Rd., Raleigh, NC, 27616 | PHONE: (919) 975 - 0420 | FAX: 9198750577 | EMAIL: reg4@capitveaire.com

DATE: 4/14/2025

DWG.#: 7466252

DRAWN BY: JMB-40

SCALE: 3/4" = 1'-0"

MASTER DRAWING

SHEET NO. 10

