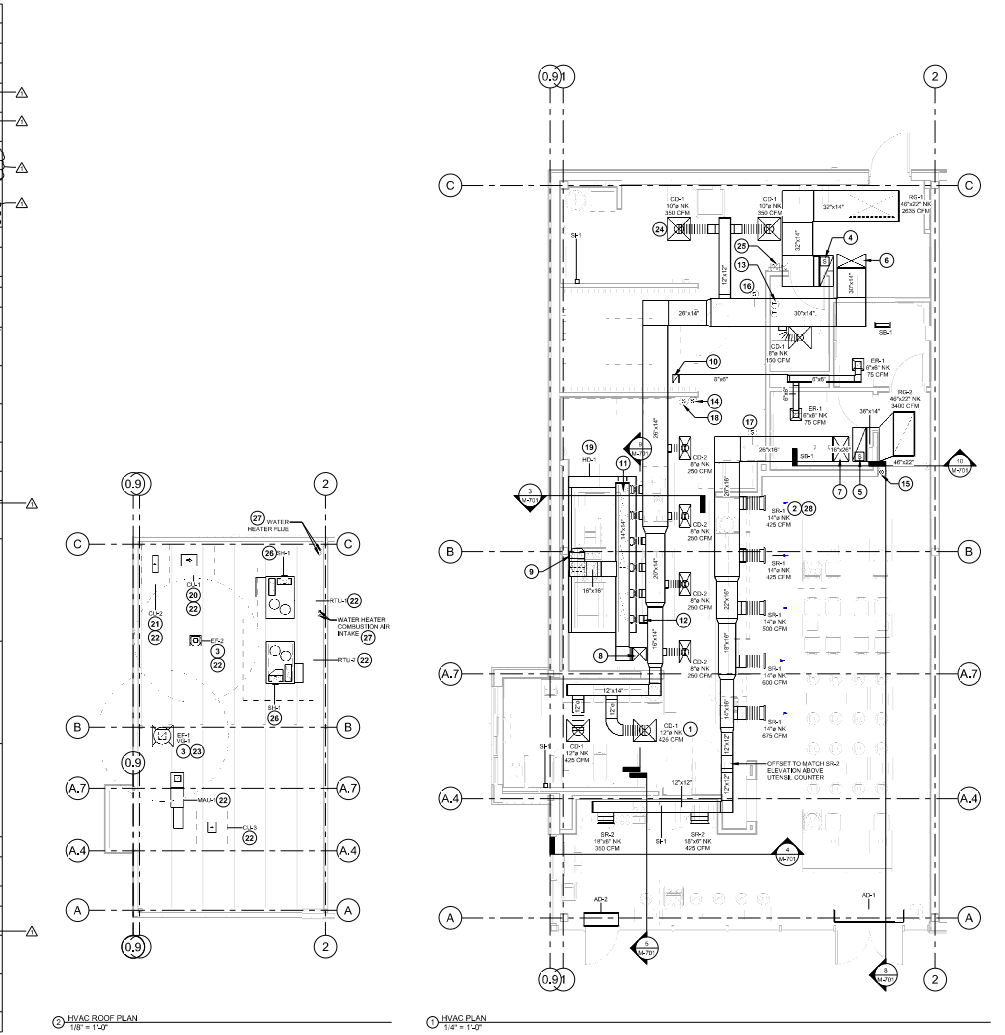


2024-DBF2/PH1-2

- KEYNOTES FOR THIS SHEET 1, 2 ETC.**
- SEE ARCHITECTURAL REFLECTED CEILING PLAN FOR CEILING MOUNTED EQUIPMENT LOCATION, TYPICAL.
 - PAINT DUCTWORK VISIBLE THROUGH DINING ROOM SUPPLY REGISTERS BLACK, TYPICAL.
 - 12" MIN. CLEARANCE FROM OUTER EDGE OF EXHAUST FAN TO FRESH AIR INTAKES, TYPICAL.
 - 4" DIA. FLEX DUCT TO EXHAUST THROUGH ROOF CURB. PROVIDE INTEGRAL SMOKE DETECTOR MOUNTED IN THE RETURN AIR STREAM. INTERLOCK SMOKE DETECTOR TO RTU-1 OPERATION.
 - 4" DIA. FLEX DUCT TO EXHAUST THROUGH ROOF CURB. PROVIDE INTEGRAL SMOKE DETECTOR MOUNTED IN THE RETURN AIR STREAM. INTERLOCK SMOKE DETECTOR TO RTU-2 OPERATION.
 - 30" H. DUCT UP FROM BUILDING SUPPLY THROUGH ROOF. TRANSITION TO 18" H. SUPPLY CONNECTION IN ROOF CURB. SEE DETAIL 816-70. LABEL SMOKE DETECTOR MOUNTED IN ROOF CURB. INTERLOCK SMOKE DETECTOR TO RTU-2 OPERATION.
 - 30" H. DUCT UP FROM BUILDING SUPPLY THROUGH ROOF. PROVIDE ECCENTRIC TRANSITION BEFORE TRAVELING ROOF TO 18" H. SUPPLY CONNECTION IN ROOF CURB. SEE DETAIL 816-70. LABEL SMOKE DETECTOR MOUNTED IN ROOF CURB. INTERLOCK SMOKE DETECTOR TO RTU-2 OPERATION.
 - 18" H. DUCT UP THROUGH ROOF. TRANSITION TO 18" H. SUPPLY CONNECTION IN ROOF CURB.
 - 18" H. DUCT UP FROM HOOD THROUGH ROOF TO EJECT COMPLIANT WITH NFPA 96. PROVIDE RADIUS ELBOWS WITH AN INSIDE RADIUS OF 0.5M AT ELBOWS IN GREASE DUCT.
 - 18" H. DUCT UP THROUGH ROOF TO EF-2. SEE DETAIL 816-70.
 - 18" H. DUCT DOWN TO MAKEUP AIR FOR DUCT CONNECTION. TRANSITION TO SUPPLY PLENUM OPENINGS SIZE, TYPICAL FOR S.
 - 18" H. DUCT DOWN TO AC RSP DUCT CONNECTION. TRANSITION TO SUPPLY PLENUM OPENINGS SIZE, TYPICAL. SEE DUCT CONNECTIONS.
 - INSTALL GRAIN PROBE FOR GRAIN PROBE THERMOSTATS FURNISHED BY TEMS FOR RTU-1 AT THIS LOCATION AT 4' AFF. COORDINATE WITH ELECTRICAL SWITCHING IN THIS AREA. PROVIDE WIRING AS SHOWN IN DETAIL 8E170. LABEL THERMISTAT WITH CORRESPONDING UNIT.
 - INSTALL GRAIN PROBE ZONE SENSOR MODULE FURNISHED BY TEMS FOR RTU-1 AT THIS LOCATION AT 7' AFF. DIRECTLY TO WALL (NO JUNCTION BOX). COORDINATE LOCATION WITH EQUIPMENT. PROVIDE WIRING AS SHOWN IN DETAIL 8E170. LABEL SENSOR WITH CORRESPONDING UNIT.
 - INSTALL GRAIN PROBE ZONE SENSOR MODULE FURNISHED BY TEMS FOR RTU-2 AT THIS LOCATION AT 8' AFF. DIRECTLY TO WALL (NO JUNCTION BOX). COORDINATE LOCATION WITH EQUIPMENT. PROVIDE WIRING AS SHOWN IN DETAIL 8E170. LABEL SENSOR WITH CORRESPONDING UNIT.
 - INSTALL GRAIN PROBE SUPPLY PROBE FURNISHED BY TEMS FOR RTU-1 IN THE SUPPLY DUCTWORK UPSTREAM FROM THE FIRST BRANCH CONNECTION. PROVIDE WIRING AS SHOWN IN DETAIL 8E170.
 - INSTALL GRAIN PROBE SUPPLY PROBE FURNISHED BY TEMS FOR RTU-2 IN THE SUPPLY DUCTWORK UPSTREAM FROM THE FIRST BRANCH CONNECTION. PROVIDE WIRING AS SHOWN IN DETAIL 8E170.
 - INSTALL REMOTE TEMPERATURE SENSOR FOR HOOD HD-1 AT THIS LOCATION AT 4' AFF. COORDINATE LOCATION WITH EQUIPMENT. PROVIDE 0.1875" THERMISTAT CABLE FROM TEMPERATURE SENSOR TO HOOD CONTROL PANEL. LABEL SENSOR HD-1.
 - INSTALL KITCHEN HOOD HD-1. SUPPORT HOOD PER MANUFACTURER'S INSTALLATION INSTRUCTIONS AND AS DETAILED IN THE ARCHITECTURAL AND STRUCTURAL DRAWINGS. INSTALL HOOD ACCORDING TO THE REQUIREMENTS OF ITS LISTING, IN COMPLIANCE WITH NFPA 96, THE BUILDING CODE, AND AUTHORITIES HAVING JURISDICTION. HOOD SHALL HAVE AN INTEGRAL DUCT COLLAR TEMPERATURE SENSOR TO AUTOMATICALLY ENERGIZE THE EXHAUST AND MAKEUP AIR FANS IF COOKING TEMPERATURES ARE DETECTED. PROVIDE DUCT SYSTEM TO BE VULNERED OR FACTORY-MANUFACTURED WATER AND AIR TIGHT. INSTALL CLEANOUTS PER CODE AND AS SHOWN. INSTALL HOOD PER DETAILS 816-70 AND 816-71. CHIPOTLE WILL PROVIDE AN INDEPENDENT TESTING AGENCY FOR TESTING THE INTEGRITY OF THE GREASE DUCT SYSTEM.
 - INSTALL REMOTE CONDENSING UNIT FOR WALK-IN COOLER ON ROOF AS DETAILED IN THE ARCHITECTURAL AND STRUCTURAL DRAWINGS. INSTALL REFRIGERANT LINE SET, THERMOSTATIC EXPANSION VALVE, SOLENOID VALVE, TEMPERATURE CONTROL, SIGHT GLASS, FILTER DRIER, PRESSURE CONTROL, LOW AMBIENT CONTROLS, AND WEATHERPROOF HOUSING, TRAP AND SLOPE REFRIGERANT LINES PER MANUFACTURER'S RECOMMENDATIONS. SEAL PIPING PENETRATIONS THROUGH ROOF. INSTALLATION SHALL COMPLY WITH ASHRAE ANSI STANDARD 15. INSTALL THE REFRIGERANT LINE SET UNDER THE ROOF DECK TO WITHIN 2" OF THE CONDENSING UNIT. CUT 2-1/2" HOLE IN WALK-IN COOLER ROOF FOR REFRIGERANT LINE SET AND SEAL PER THE COOLER MANUFACTURER'S INSTALLATION INSTRUCTIONS AFTER LINE SET IS INSTALLED.
 - INSTALL REMOTE CONDENSER FOR ICE MACHINE ON ROOF. INSTALL REFRIGERANT LINE SET, THERMOSTATIC EXPANSION VALVE, SOLENOID VALVE, TEMPERATURE CONTROL, SIGHT GLASS, FILTER DRIER, PRESSURE CONTROL, LOW AMBIENT CONTROLS, AND WEATHERPROOF HOUSING, TRAP AND SLOPE REFRIGERANT LINES PER MANUFACTURER'S RECOMMENDATIONS. SEAL PIPING PENETRATIONS THROUGH ROOF. INSTALLATION SHALL COMPLY WITH ASHRAE ANSI STANDARD 15. INSTALL THE REFRIGERANT LINE SET UNDER THE ROOF DECK TO WITHIN 2" OF THE REMOTE CONDENSER. IF REFRIGERANT PIPING TO ICE MACHINE IS EXPOSED TO PUBLIC VIEW, CONCEAL WITH A STAINLESS STEEL SINGLED AS SHOWN IN THE ARCHITECTURAL DRAWINGS.
 - INSTALL ROOFTOP EQUIPMENT PER MANUFACTURER'S INSTALLATION INSTRUCTIONS AND AS DETAILED IN THE ARCHITECTURAL AND STRUCTURAL DRAWINGS.
 - INSTALL EXHAUST FAN EF-1 PER DETAIL 816-70 AND AS DETAILED IN THE ARCHITECTURAL AND STRUCTURAL DRAWINGS. INSTALL GREASE PROGUARD SYSTEM FURNISHED BY CHIPOTLE ON EXHAUST FAN EF-1.
 - PROVIDE SUPPLY DIFFUSER CONNECTION TO SUPPLY SYSTEM PER DETAIL 816-700. TYPICAL.
 - PROVIDE AUDIBLE REMOTE SMOKE DETECTOR ANNUNCIATOR WITH REMOTE KEY OPERATED RESET. WIRE A UNIT BACK TO EACH SMOKE DETECTOR UNIT MOUNT UNIT 60" AFF. LABEL ANNUNCIATOR WITH CORRESPONDING UNIT. TYPICAL.
 - INSTALL REME HALO AIR PURIFIER FURNISHED BY TUV IN RTU PER DETAIL 816-700. SEE ELECTRICAL DRAWINGS FOR POWER CONNECTION INFORMATION. INSTALL UV WARNING STICKERS ON FACE OF ENCLOSURE PER DETAIL AND ON ANY RTU ACCESS DOORS THROUGH WHICH THE REME HALO BE VISIBLE IF OPENED.
 - MAINTAIN 10" CLEARANCE BETWEEN WATER HEATER FLUE TERMINATION AND OUTSIDE AIR INTAKES. MAINTAIN 10" CLEARANCE BETWEEN WATER HEATER COMBUSTION AIR INTAKE AND EXHAUST FAN EX-1 DISCHARGE. SEE PLUMBING DRAWINGS FOR MORE INFORMATION ON WATER HEATER FLUE AND COMBUSTION AIR TERMINATIONS.
 - ADJUST SUPPLY REGISTERS SO THAT SUPPLY AIR HITS WALL ON OPPOSITE SIDE OF ROOM AT APPROXIMATELY 7'-0" AFF WITH NO DIRECTS FELL IN THE DINING ROOM.



Chipotle Mexican Grill

214 W. Main Street, Suite 208
Moorestown, NJ 08057
(856) 778-5400

STORE NO.: 4715
ITC CROSSINGS NJ
INTERNATIONAL DRIVE SOUTH
FLANDERS, NJ 07836

REV. DATE DESCRIPTION
09/29/2023 I.L.S.T.
09/20/2024 PH001 SBT
1 09/20/2024 800 SET

HVAC PLAN

M-100
2 OF 15

HOOD SHOP DRAWING PRODUCED BY
MANUFACTURER - FOR REFERENCE ONLY

FOR QUESTIONS, CALL ITC
HARRISBURG OFFICE
800-445-7600
RENTON OFFICE
509-875-9400
E-MAIL: SALES@ITC-CROSSINGS.COM

PATENT NUMBERS
AC-FSP (ON LINE) 5,141,510 - US PATENT 5,141,510
AC-FSP (ON LINE) 5,141,511 - US PATENT 5,141,511
AC-FSP (ON LINE) 5,141,512 - US PATENT 5,141,512

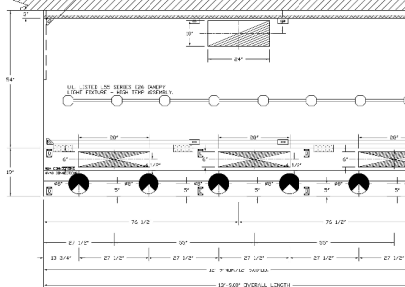
| HOOD INFORMATION | | JOB NO. 12338 | |
|------------------|----------|---------------|--------|
| TAG | MODEL | MANUFACTURER | LENGTH |
| 1 | SH44 | CAPTIVE | 10' 0" |
| 2 | 2-4200-7 | | |

| HOOD INFORMATION | | SPECIFICATIONS | |
|------------------|---------|----------------|--------|
| TAG | MODEL | MANUFACTURER | LENGTH |
| 1 | CAPTIVE | SH44 | 10' 0" |

| HOOD OPTIONS | |
|--------------|---|
| TAG | DESCRIPTION |
| 1 | FIELD VERTICAL END PANEL 21" TOP WIDTH, 21" BOTTOM WIDTH, 60" HEIGHT, INSULATED 438 |
| 2 | LEFT VERTICAL END PANEL 21" TOP WIDTH, 21" BOTTOM WIDTH, 60" HEIGHT, INSULATED 432 |
| 3 | RIGHT VERTICAL END PANEL 21" TOP WIDTH, 21" BOTTOM WIDTH, 60" HEIGHT, INSULATED 432 |

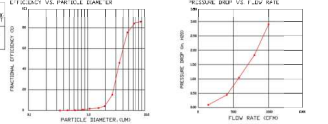
| PREPARED SUPPLY PLENUMS | | | | | |
|-------------------------|-------|--------------|--------|-------|--------|
| TAG | MODEL | MANUFACTURER | LENGTH | WIDTH | HEIGHT |
| 1 | FRONT | 60" | 19" | 6" | |

IF THERE IS A VERTICAL END PANEL, IT MUST BE INSTALLED IN THE CENTER OF THE HOOD. ALL HOODS MUST BE INSTALLED ON A LEVEL SURFACE.

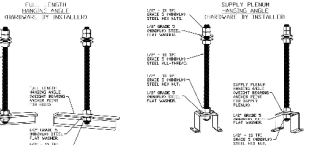


PLAN VIEW - HOOD 6
10' 0" LONG 60" WIDE
ALL HOODS MUST BE INSTALLED ON A LEVEL SURFACE.
AC-FSP SIPS LOOSE FOR FIELD INSTALLATION

SPECIFICATION CAPTIVE GREASE STOP SOLID FILTER
THE CAPTIVE GREASE STOP SOLID FILTER IS A SINGLE-STAGE FILTER FEATURING A 100% SOLID FILTER MEDIA TO PREVENT OIL FROM PASSING THROUGH THE FILTER. THE FILTER IS MADE OF STAINLESS STEEL AND IS DESIGNED TO FIT INTO STANDARD 2-1/2" DUCT HOOD CHANNELS.
EXHAUST EXHAUST EFFICIENCY PERFORMANCE SHALL BE AT LEAST 95% AT 100 CFM. EXHAUST EXHAUST EFFICIENCY PERFORMANCE SHALL NOT EXCEED 1% ABOVE 100 CFM.
ALL CAPTIVE GREASE STOP SOLID FILTERS SHALL BE TESTED TO ALL APPLICABLE ASTM TESTS. CAPTIVE GREASE STOP SOLID FILTERS SHALL BE TESTED TO ALL APPLICABLE ASTM TESTS. CAPTIVE GREASE STOP SOLID FILTERS SHALL BE TESTED TO ALL APPLICABLE ASTM TESTS.



CAPTIVE FILTERS ARE BUILT IN COMPLIANCE WITH:
NSF
UL
ULC-1000



ASSEMBLY INSTRUCTIONS
HANGING ANGLE MUST BE MAINTAINED WITH 1/2" - 1/2" IN THE CENTER OF THE HOOD. ALL HOODS MUST BE INSTALLED ON A LEVEL SURFACE. ALL HOODS MUST BE INSTALLED ON A LEVEL SURFACE. ALL HOODS MUST BE INSTALLED ON A LEVEL SURFACE.

| REV. | DESCRIPTION | DATE |
|------|--------------------------|------------|
| 1 | ISSUED FOR BIDDING | 09/29/2023 |
| 2 | REVISED PER ITC COMMENTS | 10/20/2023 |
| 3 | REVISED PER ITC COMMENTS | 11/02/2023 |

CAPTIVE
High Quality Grease Stop
800-445-7600
www.itc-crossings.com

CHIPOTLE ITC CROSSINGS NJ
INTERNATIONAL DRIVE SOUTH,
FLANDERS, N.J., 07836

DATE: 1/5/2024
DWG.#: 6218938
DRAWN BY: JTB/46
SCALE: 3/4" = 1'-0"
MASTER DRAWING

SHEET NO. 1

Polaris
214 W. Main Street, Suite 208
Moorestown, NJ 08057
(856) 778-5400



STORE NO.: 4715
ITC CROSSINGS NJ
INTERNATIONAL DRIVE SOUTH
FLANDERS, NJ 07836

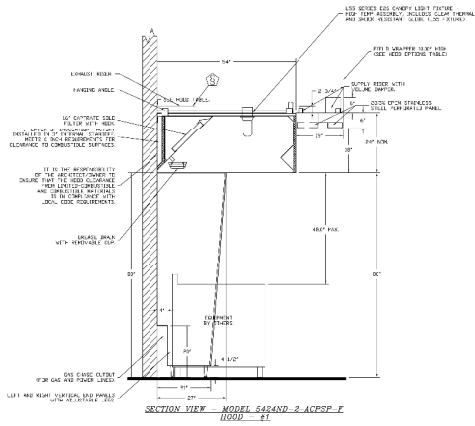
REV. DATE DESCRIPTION
09/29/2023 I.T. SET
10/20/2023 PERMIT SET
11/02/2023 RFD SET

ITC CROSSINGS, INC.
INTERNATIONAL DRIVE SOUTH,
FLANDERS, NJ, 07836

CAPTIVE
DRAWINGS

M-401
3 OF 15

HOOD SHOP DRAWING PRODUCED BY
MANUFACTURER - FOR REFERENCE ONLY



| REVISIONS | |
|-----------|-------------|
| NO. | DESCRIPTION |
| | |
| | |
| | |

CAPTIVEAIRE
High Performance Exhaust
4801 Piquette Drive, Raleigh, NC 27616 (919) 876-3300
www.captiveaire.com

CHIPOTLE MEXICAN GRILL
8475 ITC CROSSINGS NJ 07836
INTERNATIONAL DRIVE SOUTH
FLANDERS, NJ, 07836

DATE: 7/5/2024
DWG. NO.: 6218838
DRAWN BY: JMS 40
SCALE: 3/4" = 1'-0"
MASTER DRAWING
SHEET NO. 2

Polaris
214 W. Main Street, Suite 208
Moorestown, NJ 08057
(856) 778-5400

CHIPOTLE MEXICAN GRILL
THIS DRAWING IS AN INSTRUMENT OF SERVICE AND IS
THE PROPERTY OF POLARIS. IT IS TO BE USED ONLY FOR THE
PROJECT AND SITE SPECIFICALLY IDENTIFIED IN THE
DRAWING. IT IS NOT TO BE REPRODUCED OR TRANSMITTED
IN ANY FORM OR BY ANY MEANS, ELECTRONIC OR MECHANICAL,
INCLUDING PHOTOCOPYING, RECORDING, OR BY ANY INFORMATION
SYSTEM.



STORE NO.: 4715
ITC CROSSINGS NJ
INTERNATIONAL DRIVE SOUTH
FLANDERS, NJ 07836

| REV. | DATE | DESCRIPTION |
|------|------------|-------------|
| 1 | 09/29/2023 | 11 SET |
| 2 | 02/02/2024 | PERMIT SET |
| 3 | 03/25/2024 | REV SET |

PROJECT NO.: 2415

ARCHITECT: Siskin Architects, P.C.
10000 RIVERVIEW
FLANDERS, NJ 07836
(908) 851-1111

PROJECT NO.: 2415

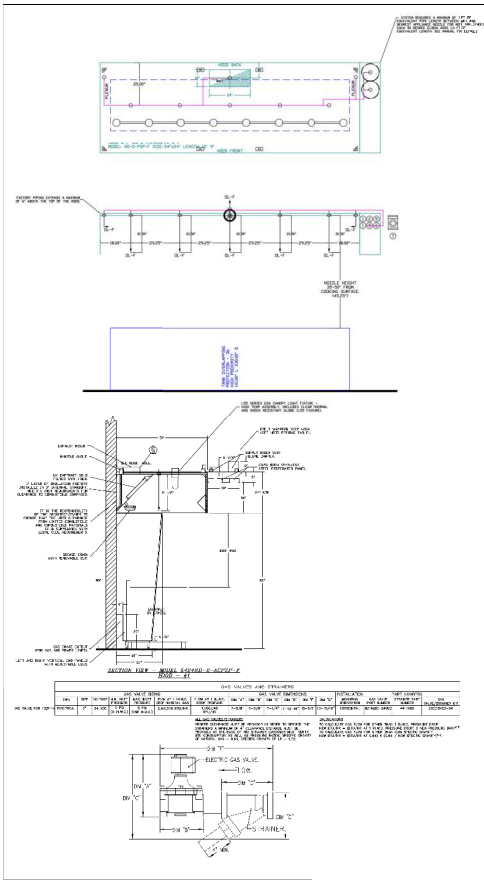
PROJECT: CAPTIVEAIRE DRAWINGS

SHEET NO. 2

M-402
4 OF 15

2024-DBR2/PW1-2

HOOD SHOP DRAWING PRODUCED BY
MANUFACTURER - FOR REFERENCE ONLY



- NOTES:**
- 1. THIS SYSTEM SHALL BE INSTALLED IN ACCORDANCE WITH THE FOLLOWING:
 - 2. THE HOOD SHALL BE INSTALLED IN ACCORDANCE WITH THE FOLLOWING:
 - 3. THE HOOD SHALL BE INSTALLED IN ACCORDANCE WITH THE FOLLOWING:
 - 4. THE HOOD SHALL BE INSTALLED IN ACCORDANCE WITH THE FOLLOWING:
 - 5. THE HOOD SHALL BE INSTALLED IN ACCORDANCE WITH THE FOLLOWING:
 - 6. THE HOOD SHALL BE INSTALLED IN ACCORDANCE WITH THE FOLLOWING:
 - 7. THE HOOD SHALL BE INSTALLED IN ACCORDANCE WITH THE FOLLOWING:
- REVISIONS:**
- | NO. | DATE | DESCRIPTION |
|-----|------------|-------------|
| 1 | 09/29/2023 | ISSUED |
| 2 | 09/29/2023 | REVISION 1 |

REVISIONS

CAPTIVE WIRE
High Voltage Cable
4601 Ferguson Park Rd., Raleigh, NC 27618 PHONE: 919.875.1425 FAX: 919.875.0222 EMAIL: info@captivewire.com

CHIPPOTLE ITC CROSSINGS NJ #4715
INTERNATIONAL DRIVE SOUTH,
FLANDERS, NJ, 07836

DATE: 1/5/2024
DWG. #: 6212838
DRAWN BY: JHS-43
SCALE: 1/2" = 1' 0"
MASTER DRAWING

SHEET NO. 4



STORE NO.: 4715
ITC CROSSINGS NJ
INTERNATIONAL DRIVE SOUTH
FLANDERS, NJ 07836

REV. DATE DESCRIPTION
09/29/2023 I1 SET
09/29/2023 REVISION 1
1 09/29/2024 R10 SET

Author: Submittals, P.E.
Reviewer: JHS

CAPTIVE WIRE
DRAWINGS

M-404
6 OF 15

2024 DBF2/P#1-2

HOOD SHOP DRAWING PRODUCED BY
MANUFACTURER - FOR REFERENCE ONLY

EXHAUST FAN INFORMATION - JOB#R212038

| UNIT | TAG | QTY | FAN UNIT # | MANUFACT.# | CFM | ESP | HP | PHASE | VEL. F.L.A. | DISCHARGE VELOCITY | WEIGHT | CONET. |
|------|------|-----|------------|------------|------|------|------|-------|-------------|--------------------|--------|--------|
| 1 | LT-1 | 1 | EXHAUST | EXHAUST | 2500 | 1.50 | 1.50 | 3 | 200 | 8.0 | 100 | 3.0 |
| 2 | LT-2 | 1 | EXHAUST | EXHAUST | 2500 | 1.50 | 1.50 | 3 | 200 | 8.0 | 100 | 3.0 |

MVA FAN INFORMATION - JOB#R212038

| UNIT | TAG | QTY | FAN UNIT # | BLOWER | Y-DWG | HP | CFM | ESP | HP | PHASE | VEL. F.L.A. | DISCHARGE VELOCITY | WEIGHT | CONET. |
|------|-------|-----|------------|---------|-------|------|------|------|------|-------|-------------|--------------------|--------|--------|
| 3 | MAN-1 | 1 | MVA | EXHAUST | 1.50 | 1.50 | 2500 | 1.50 | 1.50 | 3 | 200 | 8.0 | 100 | 3.0 |

GAS FLOW MAKE-UP AIR UNITS

| UNIT | TAG | QTY | TEMP | RESURCE INPUT GAS PRESSURE | GAS TYPE | EFFICIENCY |
|------|-------|-----|------|----------------------------|----------|------------|
| 4 | MAN-1 | 1 | 70°F | 7 IN. W.C. - 14 IN. W.C. | NATURAL | 90% |

FAN OPTIONS

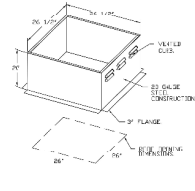
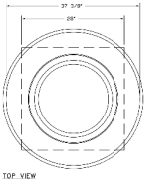
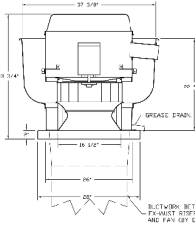
| UNIT | TAG | QTY | DESCRIPTION |
|------|-------|-----|--|
| 1 | LT-1 | 1 | 1. GREASE TRAP 2. 5 YEAR PARTS WARRANTY |
| 2 | LT-2 | 1 | 1. GREASE TRAP 2. 5 YEAR PARTS WARRANTY |
| 3 | MAN-1 | 1 | 1. 1/2" W.C. MOTOR 2. 1/2" W.C. MOTOR 3. 1/2" W.C. MOTOR 4. 1/2" W.C. MOTOR 5. 1/2" W.C. MOTOR 6. 1/2" W.C. MOTOR 7. 1/2" W.C. MOTOR 8. 1/2" W.C. MOTOR 9. 1/2" W.C. MOTOR 10. 1/2" W.C. MOTOR 11. 1/2" W.C. MOTOR 12. 1/2" W.C. MOTOR 13. 1/2" W.C. MOTOR 14. 1/2" W.C. MOTOR 15. 1/2" W.C. MOTOR 16. 1/2" W.C. MOTOR 17. 1/2" W.C. MOTOR 18. 1/2" W.C. MOTOR 19. 1/2" W.C. MOTOR 20. 1/2" W.C. MOTOR 21. 1/2" W.C. MOTOR 22. 1/2" W.C. MOTOR 23. 1/2" W.C. MOTOR 24. 1/2" W.C. MOTOR 25. 1/2" W.C. MOTOR 26. 1/2" W.C. MOTOR 27. 1/2" W.C. MOTOR 28. 1/2" W.C. MOTOR 29. 1/2" W.C. MOTOR 30. 1/2" W.C. MOTOR 31. 1/2" W.C. MOTOR 32. 1/2" W.C. MOTOR 33. 1/2" W.C. MOTOR 34. 1/2" W.C. MOTOR 35. 1/2" W.C. MOTOR 36. 1/2" W.C. MOTOR 37. 1/2" W.C. MOTOR 38. 1/2" W.C. MOTOR 39. 1/2" W.C. MOTOR 40. 1/2" W.C. MOTOR 41. 1/2" W.C. MOTOR 42. 1/2" W.C. MOTOR 43. 1/2" W.C. MOTOR 44. 1/2" W.C. MOTOR 45. 1/2" W.C. MOTOR 46. 1/2" W.C. MOTOR 47. 1/2" W.C. MOTOR 48. 1/2" W.C. MOTOR 49. 1/2" W.C. MOTOR 50. 1/2" W.C. MOTOR 51. 1/2" W.C. MOTOR 52. 1/2" W.C. MOTOR 53. 1/2" W.C. MOTOR 54. 1/2" W.C. MOTOR 55. 1/2" W.C. MOTOR 56. 1/2" W.C. MOTOR 57. 1/2" W.C. MOTOR 58. 1/2" W.C. MOTOR 59. 1/2" W.C. MOTOR 60. 1/2" W.C. MOTOR 61. 1/2" W.C. MOTOR 62. 1/2" W.C. MOTOR 63. 1/2" W.C. MOTOR 64. 1/2" W.C. MOTOR 65. 1/2" W.C. MOTOR 66. 1/2" W.C. MOTOR 67. 1/2" W.C. MOTOR 68. 1/2" W.C. MOTOR 69. 1/2" W.C. MOTOR 70. 1/2" W.C. MOTOR 71. 1/2" W.C. MOTOR 72. 1/2" W.C. MOTOR 73. 1/2" W.C. MOTOR 74. 1/2" W.C. MOTOR 75. 1/2" W.C. MOTOR 76. 1/2" W.C. MOTOR 77. 1/2" W.C. MOTOR 78. 1/2" W.C. MOTOR 79. 1/2" W.C. MOTOR 80. 1/2" W.C. MOTOR 81. 1/2" W.C. MOTOR 82. 1/2" W.C. MOTOR 83. 1/2" W.C. MOTOR 84. 1/2" W.C. MOTOR 85. 1/2" W.C. MOTOR 86. 1/2" W.C. MOTOR 87. 1/2" W.C. MOTOR 88. 1/2" W.C. MOTOR 89. 1/2" W.C. MOTOR 90. 1/2" W.C. MOTOR 91. 1/2" W.C. MOTOR 92. 1/2" W.C. MOTOR 93. 1/2" W.C. MOTOR 94. 1/2" W.C. MOTOR 95. 1/2" W.C. MOTOR 96. 1/2" W.C. MOTOR 97. 1/2" W.C. MOTOR 98. 1/2" W.C. MOTOR 99. 1/2" W.C. MOTOR 100. 1/2" W.C. MOTOR |

FAN ACCESSORIES

| UNIT | TAG | QTY | DESCRIPTION |
|------|------|-----|--|
| 1 | LT-1 | 1 | 1. GREASE TRAP 2. 5 YEAR PARTS WARRANTY |
| 2 | LT-2 | 1 | 1. GREASE TRAP 2. 5 YEAR PARTS WARRANTY |

CURB ASSEMBLIES

| UNIT | TAG | QTY | DESCRIPTION |
|------|------|-----|--|
| 1 | LT-1 | 1 | 1. 1/2" W.C. MOTOR 2. 1/2" W.C. MOTOR 3. 1/2" W.C. MOTOR 4. 1/2" W.C. MOTOR 5. 1/2" W.C. MOTOR 6. 1/2" W.C. MOTOR 7. 1/2" W.C. MOTOR 8. 1/2" W.C. MOTOR 9. 1/2" W.C. MOTOR 10. 1/2" W.C. MOTOR 11. 1/2" W.C. MOTOR 12. 1/2" W.C. MOTOR 13. 1/2" W.C. MOTOR 14. 1/2" W.C. MOTOR 15. 1/2" W.C. MOTOR 16. 1/2" W.C. MOTOR 17. 1/2" W.C. MOTOR 18. 1/2" W.C. MOTOR 19. 1/2" W.C. MOTOR 20. 1/2" W.C. MOTOR 21. 1/2" W.C. MOTOR 22. 1/2" W.C. MOTOR 23. 1/2" W.C. MOTOR 24. 1/2" W.C. MOTOR 25. 1/2" W.C. MOTOR 26. 1/2" W.C. MOTOR 27. 1/2" W.C. MOTOR 28. 1/2" W.C. MOTOR 29. 1/2" W.C. MOTOR 30. 1/2" W.C. MOTOR 31. 1/2" W.C. MOTOR 32. 1/2" W.C. MOTOR 33. 1/2" W.C. MOTOR 34. 1/2" W.C. MOTOR 35. 1/2" W.C. MOTOR 36. 1/2" W.C. MOTOR 37. 1/2" W.C. MOTOR 38. 1/2" W.C. MOTOR 39. 1/2" W.C. MOTOR 40. 1/2" W.C. MOTOR 41. 1/2" W.C. MOTOR 42. 1/2" W.C. MOTOR 43. 1/2" W.C. MOTOR 44. 1/2" W.C. MOTOR 45. 1/2" W.C. MOTOR 46. 1/2" W.C. MOTOR 47. 1/2" W.C. MOTOR 48. 1/2" W.C. MOTOR 49. 1/2" W.C. MOTOR 50. 1/2" W.C. MOTOR 51. 1/2" W.C. MOTOR 52. 1/2" W.C. MOTOR 53. 1/2" W.C. MOTOR 54. 1/2" W.C. MOTOR 55. 1/2" W.C. MOTOR 56. 1/2" W.C. MOTOR 57. 1/2" W.C. MOTOR 58. 1/2" W.C. MOTOR 59. 1/2" W.C. MOTOR 60. 1/2" W.C. MOTOR 61. 1/2" W.C. MOTOR 62. 1/2" W.C. MOTOR 63. 1/2" W.C. MOTOR 64. 1/2" W.C. MOTOR 65. 1/2" W.C. MOTOR 66. 1/2" W.C. MOTOR 67. 1/2" W.C. MOTOR 68. 1/2" W.C. MOTOR 69. 1/2" W.C. MOTOR 70. 1/2" W.C. MOTOR 71. 1/2" W.C. MOTOR 72. 1/2" W.C. MOTOR 73. 1/2" W.C. MOTOR 74. 1/2" W.C. MOTOR 75. 1/2" W.C. MOTOR 76. 1/2" W.C. MOTOR 77. 1/2" W.C. MOTOR 78. 1/2" W.C. MOTOR 79. 1/2" W.C. MOTOR 80. 1/2" W.C. MOTOR 81. 1/2" W.C. MOTOR 82. 1/2" W.C. MOTOR 83. 1/2" W.C. MOTOR 84. 1/2" W.C. MOTOR 85. 1/2" W.C. MOTOR 86. 1/2" W.C. MOTOR 87. 1/2" W.C. MOTOR 88. 1/2" W.C. MOTOR 89. 1/2" W.C. MOTOR 90. 1/2" W.C. MOTOR 91. 1/2" W.C. MOTOR 92. 1/2" W.C. MOTOR 93. 1/2" W.C. MOTOR 94. 1/2" W.C. MOTOR 95. 1/2" W.C. MOTOR 96. 1/2" W.C. MOTOR 97. 1/2" W.C. MOTOR 98. 1/2" W.C. MOTOR 99. 1/2" W.C. MOTOR 100. 1/2" W.C. MOTOR |



- FEATURES:**
- 1. 1/2" W.C. MOTOR
 - 2. 1/2" W.C. MOTOR
 - 3. 1/2" W.C. MOTOR
 - 4. 1/2" W.C. MOTOR
 - 5. 1/2" W.C. MOTOR
 - 6. 1/2" W.C. MOTOR
 - 7. 1/2" W.C. MOTOR
 - 8. 1/2" W.C. MOTOR
 - 9. 1/2" W.C. MOTOR
 - 10. 1/2" W.C. MOTOR
 - 11. 1/2" W.C. MOTOR
 - 12. 1/2" W.C. MOTOR
 - 13. 1/2" W.C. MOTOR
 - 14. 1/2" W.C. MOTOR
 - 15. 1/2" W.C. MOTOR
 - 16. 1/2" W.C. MOTOR
 - 17. 1/2" W.C. MOTOR
 - 18. 1/2" W.C. MOTOR
 - 19. 1/2" W.C. MOTOR
 - 20. 1/2" W.C. MOTOR
 - 21. 1/2" W.C. MOTOR
 - 22. 1/2" W.C. MOTOR
 - 23. 1/2" W.C. MOTOR
 - 24. 1/2" W.C. MOTOR
 - 25. 1/2" W.C. MOTOR
 - 26. 1/2" W.C. MOTOR
 - 27. 1/2" W.C. MOTOR
 - 28. 1/2" W.C. MOTOR
 - 29. 1/2" W.C. MOTOR
 - 30. 1/2" W.C. MOTOR
 - 31. 1/2" W.C. MOTOR
 - 32. 1/2" W.C. MOTOR
 - 33. 1/2" W.C. MOTOR
 - 34. 1/2" W.C. MOTOR
 - 35. 1/2" W.C. MOTOR
 - 36. 1/2" W.C. MOTOR
 - 37. 1/2" W.C. MOTOR
 - 38. 1/2" W.C. MOTOR
 - 39. 1/2" W.C. MOTOR
 - 40. 1/2" W.C. MOTOR
 - 41. 1/2" W.C. MOTOR
 - 42. 1/2" W.C. MOTOR
 - 43. 1/2" W.C. MOTOR
 - 44. 1/2" W.C. MOTOR
 - 45. 1/2" W.C. MOTOR
 - 46. 1/2" W.C. MOTOR
 - 47. 1/2" W.C. MOTOR
 - 48. 1/2" W.C. MOTOR
 - 49. 1/2" W.C. MOTOR
 - 50. 1/2" W.C. MOTOR
 - 51. 1/2" W.C. MOTOR
 - 52. 1/2" W.C. MOTOR
 - 53. 1/2" W.C. MOTOR
 - 54. 1/2" W.C. MOTOR
 - 55. 1/2" W.C. MOTOR
 - 56. 1/2" W.C. MOTOR
 - 57. 1/2" W.C. MOTOR
 - 58. 1/2" W.C. MOTOR
 - 59. 1/2" W.C. MOTOR
 - 60. 1/2" W.C. MOTOR
 - 61. 1/2" W.C. MOTOR
 - 62. 1/2" W.C. MOTOR
 - 63. 1/2" W.C. MOTOR
 - 64. 1/2" W.C. MOTOR
 - 65. 1/2" W.C. MOTOR
 - 66. 1/2" W.C. MOTOR
 - 67. 1/2" W.C. MOTOR
 - 68. 1/2" W.C. MOTOR
 - 69. 1/2" W.C. MOTOR
 - 70. 1/2" W.C. MOTOR
 - 71. 1/2" W.C. MOTOR
 - 72. 1/2" W.C. MOTOR
 - 73. 1/2" W.C. MOTOR
 - 74. 1/2" W.C. MOTOR
 - 75. 1/2" W.C. MOTOR
 - 76. 1/2" W.C. MOTOR
 - 77. 1/2" W.C. MOTOR
 - 78. 1/2" W.C. MOTOR
 - 79. 1/2" W.C. MOTOR
 - 80. 1/2" W.C. MOTOR
 - 81. 1/2" W.C. MOTOR
 - 82. 1/2" W.C. MOTOR
 - 83. 1/2" W.C. MOTOR
 - 84. 1/2" W.C. MOTOR
 - 85. 1/2" W.C. MOTOR
 - 86. 1/2" W.C. MOTOR
 - 87. 1/2" W.C. MOTOR
 - 88. 1/2" W.C. MOTOR
 - 89. 1/2" W.C. MOTOR
 - 90. 1/2" W.C. MOTOR
 - 91. 1/2" W.C. MOTOR
 - 92. 1/2" W.C. MOTOR
 - 93. 1/2" W.C. MOTOR
 - 94. 1/2" W.C. MOTOR
 - 95. 1/2" W.C. MOTOR
 - 96. 1/2" W.C. MOTOR
 - 97. 1/2" W.C. MOTOR
 - 98. 1/2" W.C. MOTOR
 - 99. 1/2" W.C. MOTOR
 - 100. 1/2" W.C. MOTOR

REVISIONS

| NO. | DESCRIPTION | DATE |
|-----|--------------------|------------|
| 1 | ISSUED FOR PERMIT | 09/25/2024 |
| 2 | REVISED PER PERMIT | 10/15/2024 |

CAPTIVE WIRE

Chipotle Mexican Grill
International Drive South
Flanders, NJ 07836

DATE: 10/25/2024
DWG#: 6212938
DRAWN BY: JHB-40
SCALE: 3/4" = 1'-0"
MASTER DRAWING

SHEET NO. 5



STORE NO.: 4715
ITC CROSSINGS NJ
INTERNATIONAL DRIVE SOUTH
FLANDERS, NJ 07836

REV. DATE DESCRIPTION

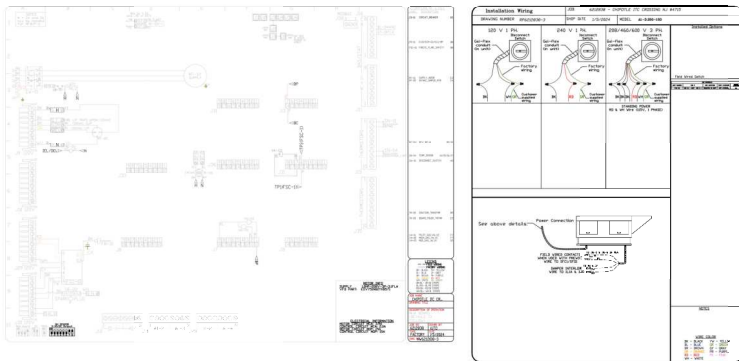
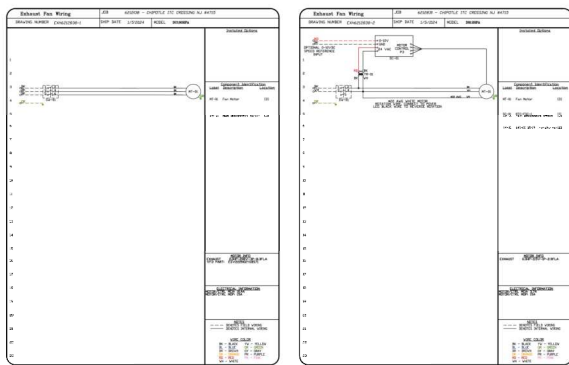
| | |
|------------|--------------------|
| 09/25/2024 | ISSUED FOR PERMIT |
| 10/15/2024 | REVISED PER PERMIT |

Chipotle Mexican Grill, Inc.
1755 W. Main Street
Moorestown, NJ 08057
www.chipotle.com

DATE: 10/25/2024
DWG#: 6212938
DRAWN BY: JHB-40
SCALE: 3/4" = 1'-0"
MASTER DRAWING

SHEET NO. 5
7 OF 15

HOOD SHOP DRAWING PRODUCED BY
MANUFACTURER - FOR REFERENCE ONLY



| REV. | DATE | DESCRIPTION |
|------|------|-------------|
| | | |
| | | |

CAPTIVEAIRE
HighCapacity Group
4841 Pennington Pike, Suite 100, Raleigh, NC 27616 PHONE: (919) 875-3200 FAX: (919) 875-3201 EMAIL: capt@captivaire.com

CHIPOTLE, ITC CROSSINGS NJ #4715
INTERNATIONAL DRIVE SOUTH,
FLANDERS, N.J. 07836

DATE: 1/3/2024
DWG.#: 671R238
DRAWN BY: JMS-40
SCALE: 3/4" = 1'-0"
MASTER DRAWING

SHEET NO. 6

Polaris
214 W. Main Street, Suite 208
Moorestown, NJ 08057
(856) 778-5400

DISCLAIMER:
THIS DRAWING IS AN INSTRUMENT OF SERVICE AND IS
THE PROPERTY OF CAPTIVEAIRE. IT IS TO BE USED ONLY FOR THE PROJECT AND SITE SPECIFICALLY IDENTIFIED HEREIN. NO PART OF THIS DRAWING IS TO BE REPRODUCED OR TRANSMITTED IN ANY FORM OR BY ANY MEANS, ELECTRONIC OR MECHANICAL, WITHOUT THE WRITTEN PERMISSION OF CAPTIVEAIRE.



STORE NO.: 4715
ITC CROSSINGS NJ
INTERNATIONAL DRIVE SOUTH
FLANDERS, NJ 07836

| REV. DATE | DESCRIPTION |
|------------|-------------|
| 09/29/2023 | 11 SET |
| 02/02/2024 | PERMIT SET |
| 03/25/2024 | REV SET |

PROJECT NO. 2311

DATE: 1/3/2024
DWG.#: 671R238
DRAWN BY: JMS-40
SCALE: 3/4" = 1'-0"
MASTER DRAWING

SHEET NO. 6

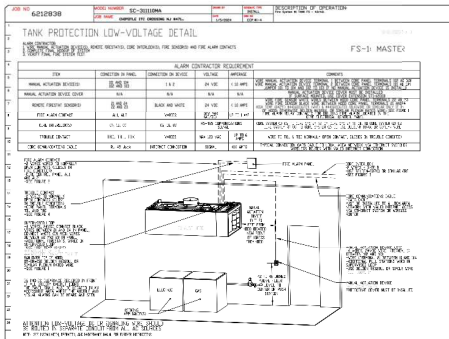
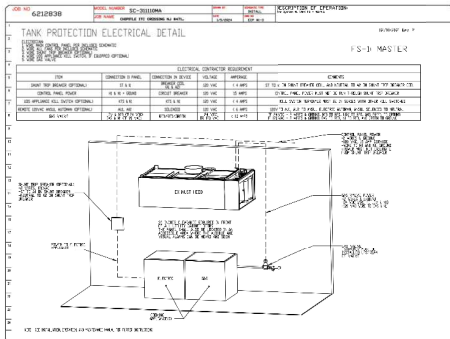
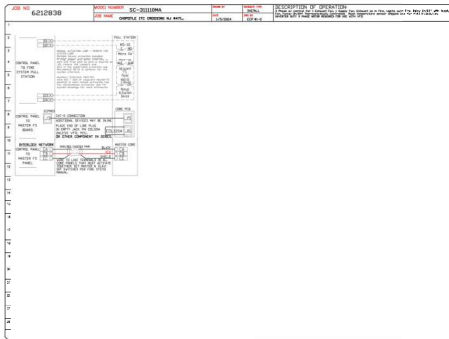
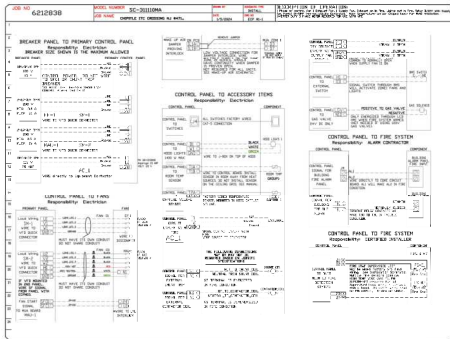
M-408
10 OF 15

2024-DBF2/PW1-2

HOOD SHOP DRAWING PRODUCED BY
MANUFACTURER - FOR REFERENCE ONLY

ELECTRICAL PACKAGE - 0084621288

| NO | TAG | PACKAGE # | LOCATION | QUANTITY | OPTION | UNIT | PRICE | AMOUNT | DATE |
|----|-----------|-----------------------|-----------------|----------|---|-------|-------|--------|-------|
| 1 | SC-30000A | UTILITY CABINET MOUNT | UTILITY CABINET | 1 LIGHT | SWAP - 2024-2, MOUNTED TO THE CONTROL PANEL | CP-1 | 2000 | 2000 | 08/13 |
| | | | | 1 FAN | SWAP - 2024-2, MOUNTED TO THE CONTROL PANEL | FAN-2 | 1000 | 1000 | 08/13 |



REVISIONS

| NO. | DATE | DESCRIPTION |
|-----|----------|-------------------|
| 1 | 08/13/24 | ISSUE FOR BIDDING |

CAPTIVE WIRE
Highwood Group

4851 Ferguson Parkway, Raleigh, NC 27617-1700 | PHONE: (919) 487-1000 | FAX: (919) 487-1001 | WWW.CAPTIVEWIRE.COM

DATE: 1/25/2024
DWG NO: 021288
DRAWN BY: MS-40
SCALE: 3/4" = 1'-0"
MASTER DRAWING

SHEET NO. 9



STORE NO.: 4715
ITC CROSSINGS NJ
INTERNATIONAL DRIVE SOUTH
FLANDERS, NJ 07836

| REV. DATE | DESCRIPTION |
|------------|-------------|
| 09/29/2023 | 11 SET |
| 09/20/2024 | PERMIT SET |
| 03/25/2024 | 80 SET |

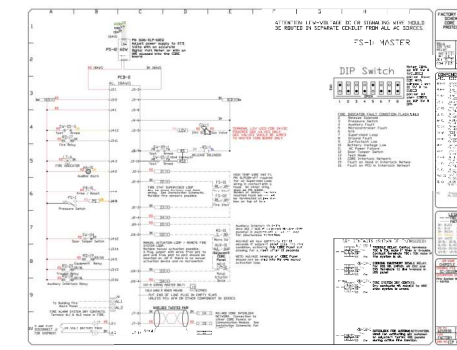
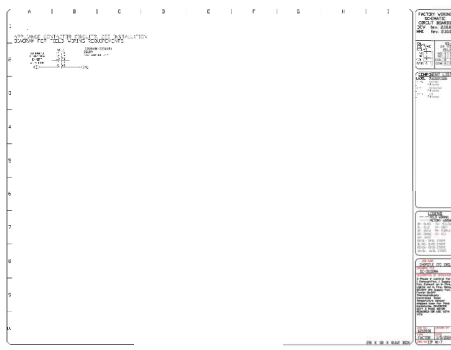
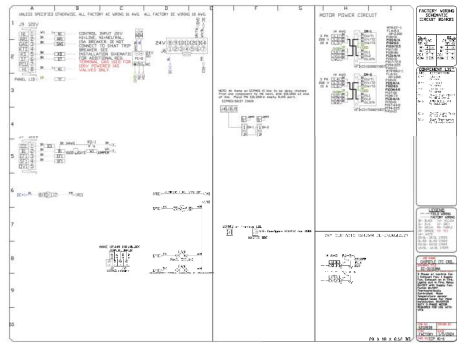
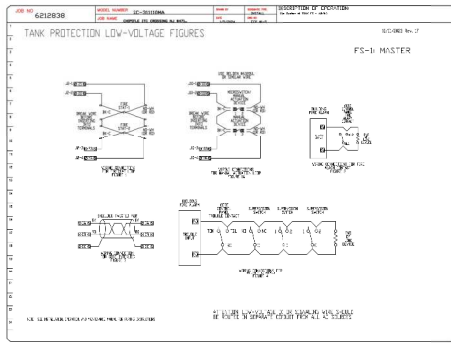
PROFESSIONAL SEAL

Anthony J. Subramanian, P.E.
Professional Engineer, Electrical
License No. 1212

CAPTIVE WIRE
DRAWINGS

M-409
11 OF 15

HOOD SHOP DRAWING PRODUCED BY
MANUFACTURER - FOR REFERENCE ONLY



REVISIONS

| NO. | DATE | DESCRIPTION |
|-----|------------|-------------|
| 1 | 03/25/2024 | REV SET |

CAPTIVE WIRE
Manufacturing Group

4401 Flanders Pkwy., Flemington, NJ 07832
TEL: 908.786.4000 FAX: 908.786.4001 EMAIL: captivewire@captivewire.com

CHIPPETLE ITC CROSSING NJ #4715
INTERNATIONAL DRIVE SOUTH,
FLANDERS, NJ, 07836

DATE: 1/5/2024

DWG. #: 6218838

DRAWN BY: JHD-40

SCALE: 3/4" = 1"

MASTER DRAWING

SHEET NO. 10

Polaris
214 W. Main Street, Suite 208
Moorestown, NJ 08057
(856) 778-5400



STORE NO.: 4715
ITC CROSSINGS NJ
INTERNATIONAL DRIVE SOUTH
FLANDERS, NJ 07836

REV. DATE DESCRIPTION
09/29/2023 IJ SET
03/25/2024 JHD SET

APPROVED BY: [Signature]
PROJECT MANAGER: [Signature]

2025
CAPTIVE WIRE
DRAWINGS

M-410
12 OF 15

NEW SHEET

2024-DBF2/P#1-2

EXHAUST FAN SCHEDULE table with columns: Tag, Manufacturer, Model, Type, Drive, CFM, EER, etc.

OUTDOOR AIR COOLED CONDENSING UNIT SCHEDULE table with columns: Unit, Manufacturer, Model, Capacity, etc.

AIR DOOR SCHEDULE table with columns: ID, Manufacturer, Model, Airflow, etc.

MAKEUP AIR UNIT SCHEDULE table with columns: Unit, Manufacturer, Model, Capacity, etc.

VENTILATION SCHEDULE table with columns: Space, Name, Area, etc.

Notes for ventilation schedule including load calculations and code references.

ROOFTOP UNIT SCHEDULE table with columns: Unit, Name, Area, etc.

- Notes for rooftop units including installation requirements and manufacturer specifications.

GRILLES, REGISTERS AND DIFFUSERS SCHEDULE table with columns: Tag, Description, etc.

MARSHALL SCHEDULE table with columns: TAG, QUANTITY, DESCRIPTION, etc.

SANITIZING EQUIPMENT SCHEDULE table with columns: TAG, COUNT, DESCRIPTION, etc.

Table with columns: Unit, Manufacturer, Model, Capacity, etc.

Table with columns: Unit, Manufacturer, Model, Capacity, etc.

Notes for equipment including installation and performance details.

Table with columns: Unit, Manufacturer, Model, Capacity, etc.

- Notes for equipment including installation and performance details.

Table with columns: Unit, Manufacturer, Model, Capacity, etc.

Table with columns: Unit, Manufacturer, Model, Capacity, etc.

Table with columns: Unit, Manufacturer, Model, Capacity, etc.

Table with columns: Unit, Manufacturer, Model, Capacity, etc.

Table with columns: Unit, Manufacturer, Model, Capacity, etc.

Table with columns: Unit, Manufacturer, Model, Capacity, etc.

Table with columns: Unit, Manufacturer, Model, Capacity, etc.



STORE NO.: 4715, ITC CROSSINGS NJ, INTERNATIONAL DRIVE SOUTH, FLANDERS, NJ 07836

REV. DATE DESCRIPTION: 09/29/2023 1.0 SET, 09/20/2024 PRINNT 1.0, 10/20/2024 800 SET

Notes for schedule including revision history and project details.

Notes for schedule including revision history and project details.

Notes for schedule including revision history and project details.

Notes for schedule including revision history and project details.

Notes for schedule including revision history and project details.

Notes for schedule including revision history and project details.

Notes for schedule including revision history and project details.

Notes for schedule including revision history and project details.

Notes for schedule including revision history and project details.

Notes for schedule including revision history and project details.

Notes for schedule including revision history and project details.

Notes for schedule including revision history and project details.

Notes for schedule including revision history and project details.

Notes for schedule including revision history and project details.

Notes for schedule including revision history and project details.

Notes for schedule including revision history and project details.

Notes for schedule including revision history and project details.

Notes for schedule including revision history and project details.

Notes for schedule including revision history and project details.

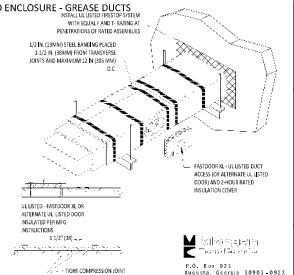
Notes for schedule including revision history and project details.

Notes for schedule including revision history and project details.

Notes for schedule including revision history and project details.

FIRE RATED ENCLOSURE - GREASE DUCTS

1. TYPICAL GREASE TRAP WRAP KIT TO BE INSTALLED TO ALL 12" DIA. AND 18" DIA. VERTICAL GREASE TRAP ENCLOSURES TO COMPLY WITH AND TO PROVIDE A 2-HOUR FIRE RATED ENCLOSURE THROUGH PENETRATIONS THROUGH EXISTING ROOF STRUCTURE ACCORDANCE WITH SECTION 0410.10, L.P.C. CODE EVALUATION REPORT #18-102741.
2. COMPART TO THE FOLLOWING CODES:
 - NFPA
 - INTERNATIONAL MECHANICAL CODES
 - LIVESIDE MECHANICAL CODES
 - CALIFORNIA MECHANICAL CODES
3. INSTALL GREASE TRAP WRAP WITH TIGHT COMPRESSION GASKET ON BOTH INSIDE AND OUTSIDE.
4. VERIFY GASKET GROUNDING (OR IS GASKET STAINLESS STEEL) RECTANGULAR OR ROUND GREASE TRAP DUCT.
5. INSTALL ALL LISTS AND LOCKS THAT FORM SEALERS (HORIZONTAL OR ACCESS DOORS) ON ALL PENETRATIONS TO LIST PER LISTING. ALL GASKETS IN DIRECT CONTACT WITH GREASE TRAP SHALL BE STAINLESS STEEL SUPPORT SYSTEM.
6. SUPPORT HORIZONTAL LISTING DOORS NOT TO BE INVERTED PROVIDED THE HORIZONTAL LISTING IS STAINLESS STEEL AND SUPPORT SYSTEM IS STAINLESS STEEL. LISTING DOORS SHALL BE STAINLESS STEEL SUPPORT SYSTEM.
7. TYPICAL GREASE TRAP WRAP SHALL BE INSTALLED SUBJECT TO THE DUCT AND WRAP FROM THE HOOD CONNECTION TO THE CONNECTION TO THE FINAL PENETRATION.
8. TYPICAL GREASE TRAP ENCLOSURE LISTING SHALL BE INSTALLED SUBJECT TO THE HOOD CONNECTION TO THE CONNECTION TO THE FINAL PENETRATION.

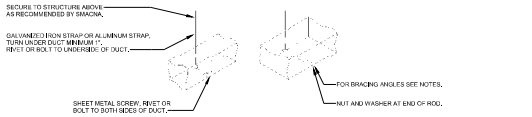


U.S. Patent # 8,923,812
 Patent # 8,923,812
 Patent # 8,923,812
 Patent # 8,923,812

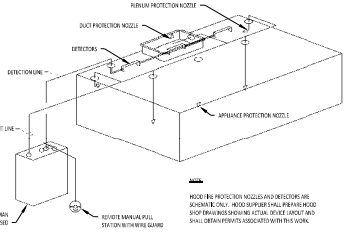
① FIREMASTER DUCT WRAP - UL-HNKT-S16
 NOT TO SCALE

RECTANGULAR DUCT HANGERS SCHEDULE (MINIMUM SPACING)

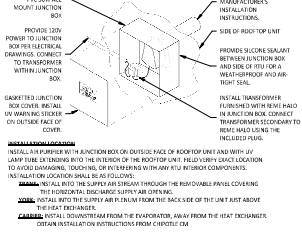
| HANG DUCT POSITION RANGE | PANEL AT 10' SPACING | | PANEL AT 8' SPACING | | PANEL AT 6' SPACING | | PANEL AT 4' SPACING | |
|--------------------------------|----------------------|-----------------|---------------------|-----------------|---------------------|-----------------|---------------------|-----------------|
| | STRAP | WIRE ROD | STRAP | WIRE ROD | STRAP | WIRE ROD | STRAP | WIRE ROD |
| Pd=30" | 1"X22 GA. | 10 GA. (B.1397) | 1"X22 GA. | 10 GA. (B.1397) | 1"X22 GA. | 12 GA. (B.1397) | 1"X22 GA. | 12 GA. (B.1397) |
| Pd=36" | 1"X18 GA. | 3/8" | 1"X22 GA. | 3/4" | 1"X22 GA. | 1/4" | 1"X22 GA. | 1/4" |
| Pd=42" | 1"X18 GA. | 3/8" | 1"X18 GA. | 3/8" | 1"X20 GA. | 3/8" | 1"X22 GA. | 1/4" |
| Pd=48" | 1"X18 GA. | 1/2" | 1"X18 GA. | 1/2" | 1"X18 GA. | 3/8" | 1"X18 GA. | 3/8" |
| Pd=54" | 1"X18 GA. | 1/2" | 1"X18 GA. | 1/2" | 1"X18 GA. | 3/8" | 1"X18 GA. | 3/8" |



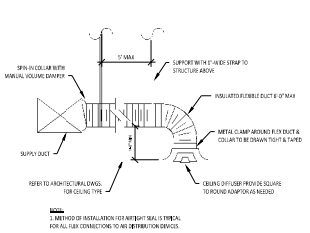
② HVAC - DUCT HANGER DETAILS
 NOT TO SCALE



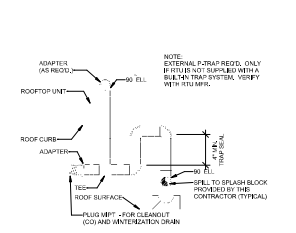
③ HVAC - FIRE SUPPRESSION SYSTEM SCHEMATIC
 NOT TO SCALE



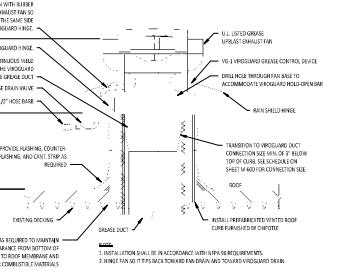
④ LIVE AIR PURIFIER INSTALLATION
 NOT TO SCALE



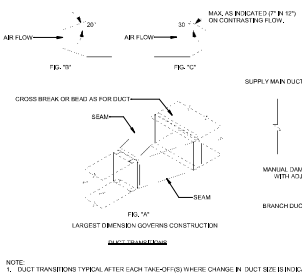
⑤ HVAC - DIFFUSER CONNECTION
 NOT TO SCALE



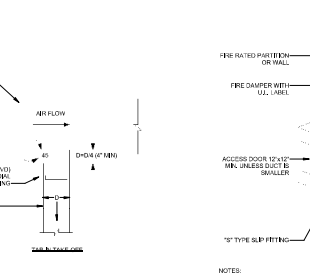
⑥ HVAC - CONDENSATE PIPING FROM RTU
 NOT TO SCALE



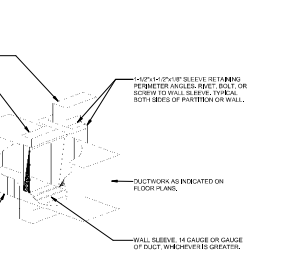
⑦ GREASE EXHAUST FAN
 NOT TO SCALE



⑧ HVAC - DUCT TRANSITION DETAILS
 NOT TO SCALE



⑨ HVAC - FIRE DAMPER DETAIL
 NOT TO SCALE



⑩ HVAC - FIRE DAMPER DETAIL
 NOT TO SCALE

Polaris
 214 W. Main Street, Suite 208
 Moorestown, NJ 08057
 (856) 778-9400

CHIPOTLE MEXICAN BELL

STORE NO.: 4715
 ITC CROSSINGS NJ
 INTERNATIONAL DRIVE SOUTH
 FLANDERS, NJ 07836

| REV. DATE | DESCRIPTION |
|------------|-------------|
| 09/29/2023 | U.S. SET |
| 02/20/2024 | PERMIT SET |
| 1 | 03/25/2024 |

PROFESSIONAL SEAL

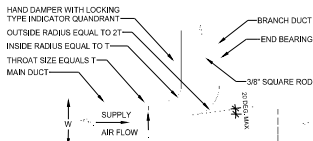
Anthony S. Subramanian, P.E.
 Mechanical Engineer
 International Drive South
 Flanders, NJ 07836
 2023

HVAC DETAILS

DATE: 03/25/2024

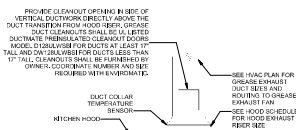
PROJECT: M-700

14 OF 15

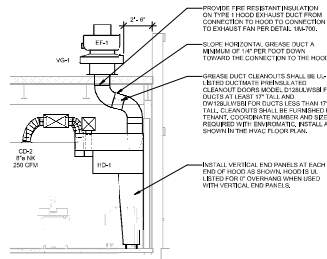


- NOTES:
- FURNISH THIS TYPE CONNECTION FOR BRANCHES WITH MORE THAN 200 CFM.
 - MUST BE USED WHEN W IS GREATER THAN, OR EQUAL TO 36\".
 - MINIMUM T = 4\".

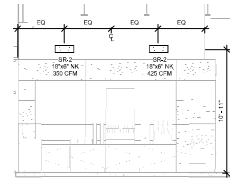
① HVAC - RECTANGULAR DUCT BRANCH
NOT TO SCALE



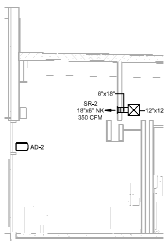
② HVAC - GREASE EXHAUST DUCT AT HOOD
NOT TO SCALE



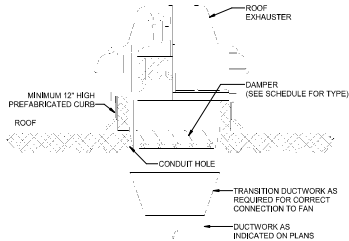
③ HVAC - HOOD DUCTWORK SECTION 'A'
1/4\"/>



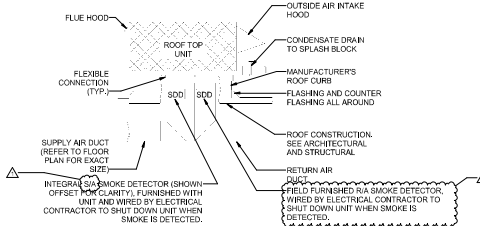
④ HVAC - UTENSIL COUNTER DUCTWORK SECTION 'A'
1/4\"/>



⑤ HVAC - UTENSIL COUNTER DUCTWORK SECTION 'B'
1/4\"/>

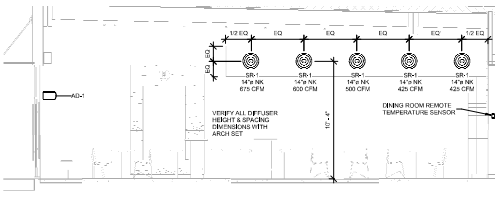


⑥ HVAC - ROOF MOUNTED EXHAUST FAN
NOT TO SCALE

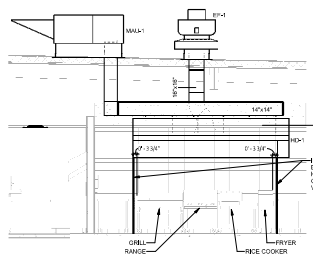


- NOTES:
- THIS DETAIL SHALL SERVE AS A STANDARD FOR INSTALLATION FOR ALL ROOFTOP UNITS. REFER TO FLOOR PLANS FOR EXACT REQUIREMENTS FOR EACH UNIT.
 - ALL ROOF PENETRATIONS ARE BASED ON MANUFACTURER'S EQUIPMENT SIA TO RIA OPENING SIZE UNLESS NOTED OTHERWISE. EXTEND FULL SIZE DUCT DOWN TO ABOVE CEILING AND TRANSITION AS SHOWN ON PLANS.

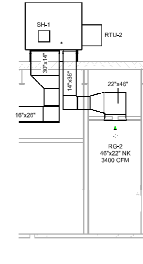
⑦ HVAC - ROOFTOP UNIT MOUNTING DETAIL
NOT TO SCALE



⑧ HVAC - DINING ROOM DUCTWORK SECTION
1/4\"/>



⑨ HOOD ELEVATION
1/4\"/>



⑩ HVAC DINING ROOM RETURN SECTION
1/4\"/>

2024-DBF2/P#1-2

Polaris
214 W. Main Street, Suite 208
Moorestown, NJ 08057
(856) 778-5400



STORE NO.: 4715
ITC CROSSINGS NJ
INTERNATIONAL DRIVE SOUTH
FLANDERS, NJ 07836

| REV. DATE | DESCRIPTION |
|------------|-------------|
| 09/29/2023 | 1.1 SET |
| 02/02/2024 | PERMIT SET |
| 03/25/2024 | REV SET |

Architect: **Suberwitz, P.C.**
1000 W. Main Street
Moorestown, NJ 08057
Phone: 856-778-5400
2024

HVAC DETAILS

M-701
15 OF 15