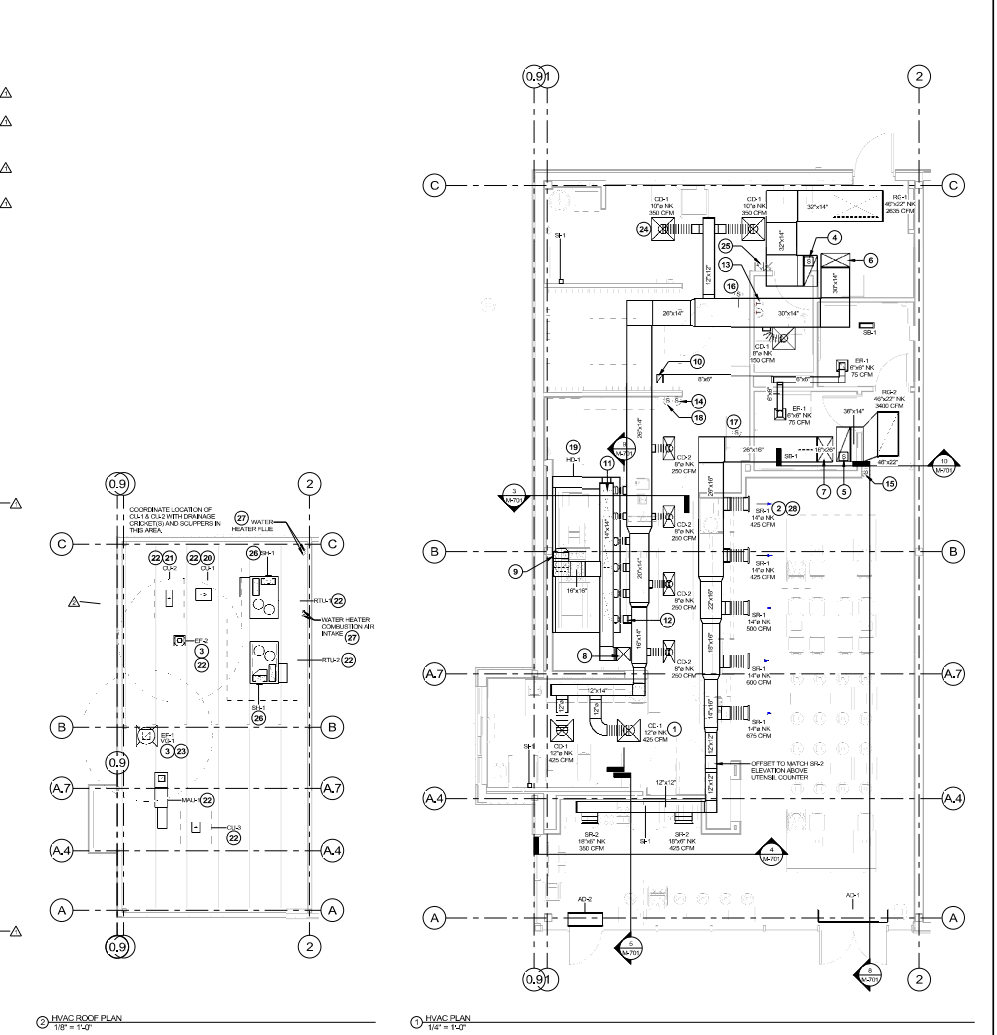


2024-DBR2/PH1.2

- KEYNOTES FOR THIS SHEET 1, 2 ETC.**
- 1 SEE ARCHITECTURAL REFLECTED CEILING PLAN FOR CEILING MOUNTED EQUIPMENT LOCATION, TYPICAL.
 - 2 PAINT DUCTWORK VISIBLE THROUGH DINING ROOM SUPPLY REGISTERS BLACK, TYPICAL.
 - 3 12" MIN. CLEARANCE FROM OUTER EDGE OF EXHAUST FAN TO FRESH AIR INTAKES, TYPICAL.
 - 4 20" R/DUCT UP FROM TRANSITION TO EJECT RELIEF CONNECTION IN ROOF CURB, FURNISH AND INSTALL SMOKE DETECTOR MOUNTED IN THE RETURN AIR STREAM, INTERLOCK SMOKE DETECTOR TO RTU-1 OPERATION.
 - 5 20" R/DUCT UP FROM TRANSITION TO EJECT RELIEF CONNECTION IN ROOF CURB, FURNISH AND INSTALL SMOKE DETECTOR MOUNTED IN THE RETURN AIR STREAM, INTERLOCK SMOKE DETECTOR TO RTU-2 OPERATION.
 - 6 20" R/DUCT UP FROM BUILDING SUPPLY THROUGH ROOF, TRANSITION TO RTU-1 SUPPLY CONNECTION IN ROOF CURB, RTU-2 SHALL HAVE AN INTEGRAL SMOKE DETECTOR MOUNTED IN THE SUPPLY AIR STREAM, INTERLOCK SMOKE DETECTOR TO RTU-2 OPERATION.
 - 7 20" R/DUCT UP FROM BUILDING SUPPLY THROUGH ROOF, PROVIDE ECCENTRIC TRANSITION BEFORE TRADING ROOF, TO TRANSITION TO RTU-2 SUPPLY CONNECTION IN ROOF CURB, SEE 10/04/20. RTU-2 SHALL HAVE AN INTEGRAL SMOKE DETECTOR MOUNTED IN THE SUPPLY AIR STREAM, INTERLOCK SMOKE DETECTOR TO RTU-2 OPERATION.
 - 8 16" R/DUCT UP THROUGH ROOF, TRANSITION TO MALL-1 SUPPLY CONNECTION IN ROOF CURB.
 - 9 16" R/DUCT UP FROM HOOD THROUGH ROOF TO EJECT COMPLIANT WITH NFPA 96, PROVIDE RADIUS ELBOWS WITH AN INSIDE RADIUS OF 0.5M AT ELBOWS IN GREASE DUCT.
 - 10 8" R/DUCT UP THROUGH ROOF TO EF-2, SEE DETAIL 6/04/20.
 - 11 20" R/DUCT DOWN TO MAKEUP AIR FOR DUCT CONNECTION, TRANSITION TO SUPPLY PLENUM OPENINGS SIZE, TYPICAL FOR 3.
 - 12 16" R/DUCT DOWN TO AC FOR DUCT CONNECTION, TRANSITION TO SUPPLY PLENUM OPENING SIZE, TYPICAL, CAP INSULATED DUCT CONNECTIONS.
 - 13 INSTALL SINGLE-GANG VERTICAL J-BOX FOR GROUNDPOINT THERMOSTATS FURNISHED BY TENS FOR RTU-1 AND RTU-2 AT THIS LOCATION AT 42" AFF, COORDINATE WITH ELECTRICAL SWITCHING IN THIS AREA, PROVIDE WIRING AS SHOWN IN DETAIL 6/17/10, LABEL THERMOSTAT WITH CORRESPONDING UNIT.
 - 14 INSTALL GROUNDPOINT ZONE SENSOR MODULE FURNISHED BY TENS FOR RTU-1 AT THIS LOCATION AT 72" AFF DIRECTLY TO WALL (NO JUNCTION BOX), COORDINATE LOCATION WITH EQUIPMENT, PROVIDE WIRING AS SHOWN IN DETAIL 6/17/10, LABEL SENSOR WITH CORRESPONDING UNIT.
 - 15 INSTALL GROUNDPOINT ZONE SENSOR MODULE FURNISHED BY TENS FOR RTU-2 AT THIS LOCATION AT 60" AFF DIRECTLY TO WALL (NO JUNCTION BOX), COORDINATE LOCATION WITH EQUIPMENT, PROVIDE WIRING AS SHOWN IN DETAIL 6/17/10, LABEL SENSOR WITH CORRESPONDING UNIT.
 - 16 INSTALL GROUNDPOINT SUPPLY PROBE FURNISHED BY TENS FOR RTU-1 IN THE SUPPLY DUCTWORK UPSTREAM FROM THE FIRST BRANCH CONNECTION, PROVIDE WIRING AS SHOWN IN DETAIL 6/17/10.
 - 17 INSTALL GROUNDPOINT SUPPLY PROBE FURNISHED BY TENS FOR RTU-2 IN THE SUPPLY DUCTWORK UPSTREAM FROM THE FIRST BRANCH CONNECTION, PROVIDE WIRING AS SHOWN IN DETAIL 6/17/10.
 - 18 INSTALL REMOTE TEMPERATURE SENSOR FOR HOOD HD-1 AT THIS LOCATION AT 72" AFF, COORDINATE LOCATION WITH EQUIPMENT, PROVIDE 0.1875" THERMISTOR CABLE FROM TEMPERATURE SENSOR TO HOOD CONTROL PANEL, LABEL SENSOR "HD-1".
 - 19 INSTALL KITCHEN HOOD, HD-1, SUPPORT HOOD PER MANUFACTURER'S INSTALLATION INSTRUCTIONS AND AS DETAILED IN THE ARCHITECTURAL AND STRUCTURAL DRAWINGS, INSTALL HOOD ACCORDING TO THE REQUIREMENTS OF ITS LISTING, IN COMPLIANCE WITH NFPA 96, THE BUILDING CODE, AND AUTHORITIES HAVING JURISDICTION, HOODS SHALL HAVE AN INTEGRAL DUCT COLLAR TEMPERATURE SENSOR TO AUTOMATICALLY ENERGIZE THE EXHAUST AND MAKEUP AIR FANS IF COOKING TEMPERATURES ARE DETECTED, INSULATED DUCT SYSTEM TO BE VIELDED OR FACTORY-MANUFACTURED WATER AND AIR TIGHT, INSTALL CLEANOUTS PER CODE AND AS SHOWN, INSTALL HOOD PER DETAILS 4/8/20 AND 3/8/20/10, CHIPOTLE WILL PROVIDE AN INDEPENDENT TESTING AGENCY FOR TESTING THE INTEGRITY OF THE GREASE DUCT SYSTEM.
 - 20 INSTALL REMOTE CONDENSING UNIT FOR WALK-IN COOLER ON ROOF AS DETAILED IN THE ARCHITECTURAL AND STRUCTURAL DRAWINGS, INSTALL REFRIGERANT LINE SET, THERMOSTATIC EXPANSION VALVE, SOLENOID VALVE, TEMPERATURE CONTROL, SIGHT GLASS, FILTER DRIER, PRESSURE CONTROL, LOW AMBIENT CONTROLS, AND WEATHERPROOF HOUSING, TRAP AND SLOPE REFRIGERANT LINES PER MANUFACTURER'S RECOMMENDATIONS, SEAL PIPING PENETRATIONS THROUGH ROOF, INSTALLATION SHALL COMPLY WITH ASHRAE ANSI STANDARD 15, INSTALL THE REFRIGERANT LINE SET UNDER THE ROOF DECK TO WITHIN 2" OF THE CONDENSING UNIT, CUT 2-1/2" HOLE IN WALK-IN COOLER ROOF FOR REFRIGERANT LINE SET AND SEAL PER THE COOLER MANUFACTURER'S INSTALLATION INSTRUCTIONS AFTER LINE SET IS INSTALLED.
 - 21 INSTALL REMOTE CONDENSER FOR ICE MACHINE ON ROOF, INSTALL REFRIGERANT LINE SET, THERMOSTATIC EXPANSION VALVE, SOLENOID VALVE, TEMPERATURE CONTROL, SIGHT GLASS, FILTER DRIER, PRESSURE CONTROL, LOW AMBIENT CONTROLS, AND WEATHERPROOF HOUSING, TRAP AND SLOPE REFRIGERANT LINES PER MANUFACTURER'S RECOMMENDATIONS, SEAL PIPING PENETRATIONS THROUGH ROOF, INSTALLATION SHALL COMPLY WITH ASHRAE ANSI STANDARD 15, INSTALL THE REFRIGERANT LINE SET UNDER THE ROOF DECK TO WITHIN 2" OF THE REMOTE CONDENSER, IF REFRIGERANT PIPING TO ICE MACHINE IS EXPOSED TO PUBLIC VIEW, CONCEAL WITH A STAINLESS STEEL SHROUD AS SHOWN IN THE ARCHITECTURAL DRAWINGS.
 - 22 INSTALL ROOFTOP EQUIPMENT PER MANUFACTURER'S INSTALLATION INSTRUCTIONS AND AS DETAILED IN THE ARCHITECTURAL AND STRUCTURAL DRAWINGS.
 - 23 INSTALL EXHAUST FAN EF-1 PER DETAIL 6/04/20 AND AS DETAILED IN THE ARCHITECTURAL AND STRUCTURAL DRAWINGS, INSTALL GREASE WINGGUARD SYSTEM FURNISHED BY CHIPOTLE ON EXHAUST FAN EF-1.
 - 24 PROVIDE SUPPLY DIFFUSER CONNECTION TO SUPPLY SYSTEM PER DETAIL 6/04/20, TYPICAL.
 - 25 PROVIDE AUDIBLE REMOTE SMOKE DETECTOR ANNUNCIATOR WITH REMOTE KEY OPERATED RESET, WIRE A UNIT BACK TO EACH SMOKE DETECTOR PER UNIT, MOUNT UNIT 60" AFF, LABEL ANNUNCIATOR WITH CORRESPONDING UNIT, TYPICAL.
 - 26 INSTALL REME HALO AIR PURIFIER FURNISHED BY TUV IN RTU PER DETAIL 6/04/20, SEE ELECTRICAL DRAWINGS FOR POWER CONNECTION INFORMATION, INSTALL UV WARNING STICKERS ON FACE OF ENCLOSURE PER DETAIL AND ON ANY RTU ACCESS DOORS THROUGH WHICH THE REME HALO BE VISIBLE IF OPENED.
 - 27 MAINTAIN 10" CLEARANCE BETWEEN WATER HEATER FLUE TERMINATION AND OUTSIDE AIR INTAKES, MAINTAIN 10" CLEARANCE BETWEEN WATER HEATER COMBUSTION AIR INTAKE AND EXHAUST FAN EF-1 DISCHARGE, SEE PLUMBING DRAWINGS FOR MORE INFORMATION ON WATER HEATER FLUE AND COMBUSTION AIR TERMINATIONS.
 - 28 ADJUST SUPPLY REGISTERS SO THAT SUPPLY AIR HITS WALL ON OPPOSITE SIDE OF ROOM AT APPROXIMATELY 7'-0" AFF WITH NO DIRECTS FEEL IN THE DINING ROOM.



② HVAC ROOF PLAN
1/8" = 1'-0"

① HVAC PLAN
1/4" = 1'-0"



214 W. Main Street, Suite 208
Moorestown, NJ 08057
(856) 778-5400



STORE NO.: 4715
ITC CROSSINGS NJ
INTERNATIONAL DRIVE SOUTH
FLANDERS, NJ 07836

REV. DATE	DESCRIPTION
09/29/2023	1. SET
02/20/2024	2. PERMITS
03/20/2024	3. RFI SET
06/03/2024	4. CONSTRUCTION
07/05/2024	5. CONSTRUCTION SET

HWAC PLAN

M-100

2 OF 15

HOOD SHOP DRAWING PRODUCED BY
MANUFACTURER - FOR REFERENCE ONLY

FOR QUESTIONS, CALL ITC
HARRISBURG, PA
800-441-1111
WWW.ITC-CROSSINGS.COM

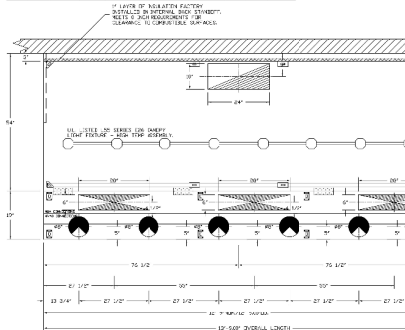
PATENT NUMBERS
AC-FSP (ON LINE) 6,814,811 - US PATENT 6,814,811
AC-FSP (ON LINE) 6,814,812 - US PATENT 6,814,812
AC-FSP (ON LINE) 6,814,813 - US PATENT 6,814,813

HOOD INFORMATION		JOB NO. 12338	
TAG	MODEL	MANUFACTURER	DATE
1	SH44	CAPTIVEAIR	10/15/11

HOOD INFORMATION		SPECIFICATIONS	
TAG	MODEL	MANUFACTURER	DATE
1	CAPTIVEAIR	ITC	10/15/11

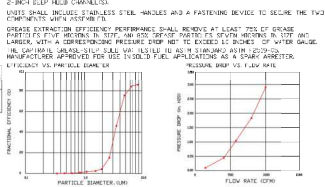
HOOD OPTIONS		SPECIFICATIONS	
TAG	MODEL	MANUFACTURER	DATE
1	CAPTIVEAIR	ITC	10/15/11

PREPARED SUPPLY PLENUMS		SPECIFICATIONS	
TAG	MODEL	MANUFACTURER	DATE
1	FRONT	ITC	10/15/11

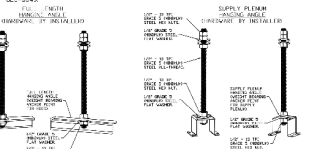


HOOD SHOP DRAWING PRODUCED BY
MANUFACTURER - FOR REFERENCE ONLY

SPECIFICATION CAPTIVEAIR GREASE TRAP SOLID FILTER
THE CAPTIVEAIR GREASE TRAP SOLID FILTER IS A SINGLE-STAGE FILTER FEATURING
A SOLID STATE FILTER MEDIA WITH A 10 MICRON FILTER MEDIA TO
DELIVER EXCEPTIONAL PERFORMANCE.
FILTER IS STAINLESS STEEL CONSTRUCTION, AND SIZES TO FIT INTO STANDARD
2-PIECE SLOTTED HOOD CHANNELS.
SIZES SHALL INCLUDE STAINLESS STEEL HOLES AND A FASTENING DEVICE TO SECURE THE TWO
COMPONENTS WITH NUTS/BOLTS.
GREASE EXTRACTION EFFICIENCY PERFORMANCE SHALL EXCEED 95% AT 100 CFM OF GREASE
PARTICLES 100 MICRONS IN SIZE AND 100% OF GREASE PARTICLES 100 MICRONS IN SIZE AND
LARGER WITH A CONCENTRATION PRESSURE DROP NOT TO EXCEED 1.0 INCHES OF WATER GAUGE.
ALL CAPTIVEAIR GREASE TRAP SOLID FILTERS SHALL BE LISTED TO ALL APPLICABLE LISTING
AGENCIES APPROVED FOR USE IN ALL APPLICABLE LISTING AGENCIES AS A GREASE ARRESTER
AT A MINIMUM OF 100 CFM OF AIR FLOW.
A 1/2" HOLES SHALL BE PROVIDED FOR THE HOOD CHANNELS.



GREASE FILTERS ARE BUILT IN COMPLIANCE WITH
NSF INTERNATIONAL'S
TYPE 1 STANDARD AS
PER THE TEST PROCEDURE
UL-1-99



ASSEMBLY INSTRUCTIONS
HANGING ANGLE MUST BE MAINTAINED WITH 1/2" - 1.0" IN THE
DIRECTION OF FLOW THROUGH HOODING
ANGLES ARE SET TO ANCHOR POINTS WITH 1/2" GRADE 5
CORROSION RESISTANT BOLTS AND 1/2" - 1.0" DIA
GRADE 5 WASHERS. HOODING SHALL BE SECURED WITH ONE
GRADE 5 WASHER PER HOODING ANGLE. HOODING
ANGLES ARE ADJUSTED TO BE HORIZONTAL WITHIN 1/4" OF
HORIZONTAL. ALL HOODING ANGLE BOLTS MUST BE TORQUE
ALL HOODING ANGLE BOLTS TO 50 FT-LBS.

ASSEMBLY INSTRUCTIONS
HANGING ANGLE MUST BE MAINTAINED WITH 1/2" - 1.0" IN THE
DIRECTION OF FLOW THROUGH HOODING
ANGLES ARE SET TO ANCHOR POINTS WITH 1/2" GRADE 5
CORROSION RESISTANT BOLTS AND 1/2" - 1.0" DIA
GRADE 5 WASHERS. HOODING SHALL BE SECURED WITH ONE
GRADE 5 WASHER PER HOODING ANGLE. HOODING
ANGLES ARE ADJUSTED TO BE HORIZONTAL WITHIN 1/4" OF
HORIZONTAL. ALL HOODING ANGLE BOLTS MUST BE TORQUE
ALL HOODING ANGLE BOLTS TO 50 FT-LBS.

ASSEMBLY INSTRUCTIONS
HANGING ANGLE MUST BE MAINTAINED WITH 1/2" - 1.0" IN THE
DIRECTION OF FLOW THROUGH HOODING
ANGLES ARE SET TO ANCHOR POINTS WITH 1/2" GRADE 5
CORROSION RESISTANT BOLTS AND 1/2" - 1.0" DIA
GRADE 5 WASHERS. HOODING SHALL BE SECURED WITH ONE
GRADE 5 WASHER PER HOODING ANGLE. HOODING
ANGLES ARE ADJUSTED TO BE HORIZONTAL WITHIN 1/4" OF
HORIZONTAL. ALL HOODING ANGLE BOLTS MUST BE TORQUE
ALL HOODING ANGLE BOLTS TO 50 FT-LBS.

214 W. Main Street, Suite 208
Moorestown, NJ 08057
(856) 718-5400



STORE NO.: 4715
ITC CROSSINGS NJ
INTERNATIONAL DRIVE SOUTH
FLANDERS, NJ 07836

REV. DATE DESCRIPTION
09/29/2023 I.T. SET
09/29/2023 PERMIT SET
1 09/29/2024 HD SET
09/29/2024 CONSTRUCTION SET

REVISIONS

DATE: 1/5/2024
DWG.#: 6218938
DRAWN BY: JTB/46
SCALE: 3/4" = 1'-0"
MASTER DRAWING

SHEET NO. 1

CHIPPOTLE ITC CROSSINGS NJ
INTERNATIONAL DRIVE SOUTH,
FLANDERS, N.J., 07836

Where ITC Crossings, LLC
has its principal office
10000 ITC CROSSINGS AVENUE, SUITE 100
FLANDERS, NJ
07836-4600

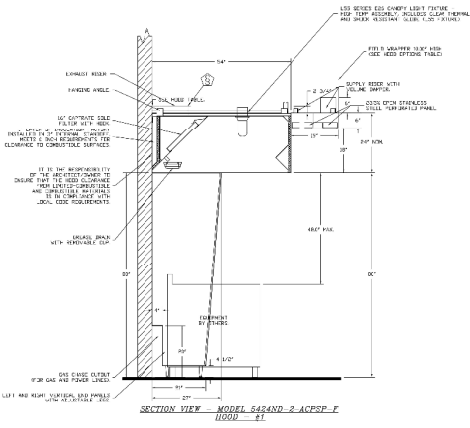
2024

ITC CROSSINGS
CAPTIVEAIR
DRAWINGS

M-401
3 OF 15

2024-DBF2/PW1.2

HOOD SHOP DRAWING PRODUCED BY
MANUFACTURER - FOR REFERENCE ONLY



REV.	DATE	DESCRIPTION
1		
2		
3		
4		

CAPTIVEAIRE
High-Performance
Commercial Kitchen Exhaust Fans

4801 Piquette Ave. Raleigh, NC 27605 (919) 875-2200
www.captiveaire.com

CHIPOTLE ITC CROSSINGS NJ #4715
INTERNATIONAL DRIVE SOUTH,
FLANDERS, NJ, 07836

DATE: 7/5/2024
DWG. NO.: 6218838

DRAWN BY: JMS 40
SCALE: 3/4" = 1'-0"
MASTER DRAWING

SHEET NO. 2

Polaris
214 W. Main Street, Suite 208
Moorestown, NJ 08057
(856) 718-5400

THIS DRAWING IS AN INSTRUMENT OF SERVICE AND IS THE PROPERTY OF POLARIS INDUSTRIES, INC. IT IS TO BE USED ONLY FOR THE PROJECT AND SITE SPECIFICALLY IDENTIFIED ON THE DRAWING. IT IS NOT TO BE REPRODUCED, COPIED, OR TRANSMITTED IN ANY FORM OR BY ANY MEANS, WITHOUT THE WRITTEN PERMISSION OF POLARIS INDUSTRIES, INC.



STORE NO.: 4715
ITC CROSSINGS NJ
INTERNATIONAL DRIVE SOUTH
FLANDERS, NJ 07836

REV. DATE	DESCRIPTION
09/29/2023	11 SET
02/02/2024	PERMIT SET
03/25/2024	REV SET
03/26/2024	CONSTRUCTION SET

PROFESSIONAL SEAL

Where I am employed, I am
a duly licensed
Professional Engineer, State of NJ,
No. 000000000

PROJECT:
CAPTIVEAIRE
DRAWINGS

SHEET NUMBER
M-402
4 OF 15

2024-DBR2/PW1.2

HOOD SHOP DRAWING PRODUCED BY
MANUFACTURER - FOR REFERENCE ONLY



FIRE SYSTEM INFORMATION JOB#6218838				INSTALLATION	
FIRE SYSTEM NO.	TYPE	SIZE	MAX I.P.	SYSTEM	LOCATION CH-N-208
1	DC ELECTRICAL	62/30	40	FIRE CABINET RIGHT	86'11" (HD)

GAS (BALANCE)			
FIRE SYSTEM TAG	TYPE	SIZE	SUPPLIED BY
1	DC ELECTRICAL	62/30	CAPTIVEAIRE SYSTEMS

FIRE SYSTEM PARTS LIST KEY				
SYSTEM TAG	KEY NUMBER	PART DESCRIPTION	QTY BY FACTORY	QTY BY LIST
1	1	1" - 1/2" FIRE SUPPRESSION HOSE (100' LENGTH) (100' LENGTH) (100' LENGTH) (100' LENGTH)	1	0
1	2	1" - 1/2" FIRE SUPPRESSION HOSE (100' LENGTH) (100' LENGTH) (100' LENGTH) (100' LENGTH)	1	0
1	3	1" - 1/2" FIRE SUPPRESSION HOSE (100' LENGTH) (100' LENGTH) (100' LENGTH) (100' LENGTH)	1	0
1	4	1" - 1/2" FIRE SUPPRESSION HOSE (100' LENGTH) (100' LENGTH) (100' LENGTH) (100' LENGTH)	1	0
1	5	1" - 1/2" FIRE SUPPRESSION HOSE (100' LENGTH) (100' LENGTH) (100' LENGTH) (100' LENGTH)	1	0
1	6	1" - 1/2" FIRE SUPPRESSION HOSE (100' LENGTH) (100' LENGTH) (100' LENGTH) (100' LENGTH)	1	0
1	7	1" - 1/2" FIRE SUPPRESSION HOSE (100' LENGTH) (100' LENGTH) (100' LENGTH) (100' LENGTH)	1	0
1	8	1" - 1/2" FIRE SUPPRESSION HOSE (100' LENGTH) (100' LENGTH) (100' LENGTH) (100' LENGTH)	1	0
1	9	1" - 1/2" FIRE SUPPRESSION HOSE (100' LENGTH) (100' LENGTH) (100' LENGTH) (100' LENGTH)	1	0
1	10	1" - 1/2" FIRE SUPPRESSION HOSE (100' LENGTH) (100' LENGTH) (100' LENGTH) (100' LENGTH)	1	0
1	11	1" - 1/2" FIRE SUPPRESSION HOSE (100' LENGTH) (100' LENGTH) (100' LENGTH) (100' LENGTH)	1	0
1	12	1" - 1/2" FIRE SUPPRESSION HOSE (100' LENGTH) (100' LENGTH) (100' LENGTH) (100' LENGTH)	1	0
1	13	1" - 1/2" FIRE SUPPRESSION HOSE (100' LENGTH) (100' LENGTH) (100' LENGTH) (100' LENGTH)	1	0
1	14	1" - 1/2" FIRE SUPPRESSION HOSE (100' LENGTH) (100' LENGTH) (100' LENGTH) (100' LENGTH)	1	0
1	15	1" - 1/2" FIRE SUPPRESSION HOSE (100' LENGTH) (100' LENGTH) (100' LENGTH) (100' LENGTH)	1	0
1	16	1" - 1/2" FIRE SUPPRESSION HOSE (100' LENGTH) (100' LENGTH) (100' LENGTH) (100' LENGTH)	1	0
1	17	1" - 1/2" FIRE SUPPRESSION HOSE (100' LENGTH) (100' LENGTH) (100' LENGTH) (100' LENGTH)	1	0
1	18	1" - 1/2" FIRE SUPPRESSION HOSE (100' LENGTH) (100' LENGTH) (100' LENGTH) (100' LENGTH)	1	0
1	19	1" - 1/2" FIRE SUPPRESSION HOSE (100' LENGTH) (100' LENGTH) (100' LENGTH) (100' LENGTH)	1	0
1	20	1" - 1/2" FIRE SUPPRESSION HOSE (100' LENGTH) (100' LENGTH) (100' LENGTH) (100' LENGTH)	1	0
1	21	1" - 1/2" FIRE SUPPRESSION HOSE (100' LENGTH) (100' LENGTH) (100' LENGTH) (100' LENGTH)	1	0
1	22	1" - 1/2" FIRE SUPPRESSION HOSE (100' LENGTH) (100' LENGTH) (100' LENGTH) (100' LENGTH)	1	0
1	23	1" - 1/2" FIRE SUPPRESSION HOSE (100' LENGTH) (100' LENGTH) (100' LENGTH) (100' LENGTH)	1	0
1	24	1" - 1/2" FIRE SUPPRESSION HOSE (100' LENGTH) (100' LENGTH) (100' LENGTH) (100' LENGTH)	1	0
1	25	1" - 1/2" FIRE SUPPRESSION HOSE (100' LENGTH) (100' LENGTH) (100' LENGTH) (100' LENGTH)	1	0
1	26	1" - 1/2" FIRE SUPPRESSION HOSE (100' LENGTH) (100' LENGTH) (100' LENGTH) (100' LENGTH)	1	0
1	27	1" - 1/2" FIRE SUPPRESSION HOSE (100' LENGTH) (100' LENGTH) (100' LENGTH) (100' LENGTH)	1	0
1	28	1" - 1/2" FIRE SUPPRESSION HOSE (100' LENGTH) (100' LENGTH) (100' LENGTH) (100' LENGTH)	1	0
1	29	1" - 1/2" FIRE SUPPRESSION HOSE (100' LENGTH) (100' LENGTH) (100' LENGTH) (100' LENGTH)	1	0
1	30	1" - 1/2" FIRE SUPPRESSION HOSE (100' LENGTH) (100' LENGTH) (100' LENGTH) (100' LENGTH)	1	0
1	31	1" - 1/2" FIRE SUPPRESSION HOSE (100' LENGTH) (100' LENGTH) (100' LENGTH) (100' LENGTH)	1	0
1	32	1" - 1/2" FIRE SUPPRESSION HOSE (100' LENGTH) (100' LENGTH) (100' LENGTH) (100' LENGTH)	1	0
1	33	1" - 1/2" FIRE SUPPRESSION HOSE (100' LENGTH) (100' LENGTH) (100' LENGTH) (100' LENGTH)	1	0
1	34	1" - 1/2" FIRE SUPPRESSION HOSE (100' LENGTH) (100' LENGTH) (100' LENGTH) (100' LENGTH)	1	0
1	35	1" - 1/2" FIRE SUPPRESSION HOSE (100' LENGTH) (100' LENGTH) (100' LENGTH) (100' LENGTH)	1	0
1	36	1" - 1/2" FIRE SUPPRESSION HOSE (100' LENGTH) (100' LENGTH) (100' LENGTH) (100' LENGTH)	1	0
1	37	1" - 1/2" FIRE SUPPRESSION HOSE (100' LENGTH) (100' LENGTH) (100' LENGTH) (100' LENGTH)	1	0
1	38	1" - 1/2" FIRE SUPPRESSION HOSE (100' LENGTH) (100' LENGTH) (100' LENGTH) (100' LENGTH)	1	0
1	39	1" - 1/2" FIRE SUPPRESSION HOSE (100' LENGTH) (100' LENGTH) (100' LENGTH) (100' LENGTH)	1	0
1	40	1" - 1/2" FIRE SUPPRESSION HOSE (100' LENGTH) (100' LENGTH) (100' LENGTH) (100' LENGTH)	1	0
1	41	1" - 1/2" FIRE SUPPRESSION HOSE (100' LENGTH) (100' LENGTH) (100' LENGTH) (100' LENGTH)	1	0
1	42	1" - 1/2" FIRE SUPPRESSION HOSE (100' LENGTH) (100' LENGTH) (100' LENGTH) (100' LENGTH)	1	0
1	43	1" - 1/2" FIRE SUPPRESSION HOSE (100' LENGTH) (100' LENGTH) (100' LENGTH) (100' LENGTH)	1	0
1	44	1" - 1/2" FIRE SUPPRESSION HOSE (100' LENGTH) (100' LENGTH) (100' LENGTH) (100' LENGTH)	1	0
1	45	1" - 1/2" FIRE SUPPRESSION HOSE (100' LENGTH) (100' LENGTH) (100' LENGTH) (100' LENGTH)	1	0
1	46	1" - 1/2" FIRE SUPPRESSION HOSE (100' LENGTH) (100' LENGTH) (100' LENGTH) (100' LENGTH)	1	0
1	47	1" - 1/2" FIRE SUPPRESSION HOSE (100' LENGTH) (100' LENGTH) (100' LENGTH) (100' LENGTH)	1	0
1	48	1" - 1/2" FIRE SUPPRESSION HOSE (100' LENGTH) (100' LENGTH) (100' LENGTH) (100' LENGTH)	1	0
1	49	1" - 1/2" FIRE SUPPRESSION HOSE (100' LENGTH) (100' LENGTH) (100' LENGTH) (100' LENGTH)	1	0
1	50	1" - 1/2" FIRE SUPPRESSION HOSE (100' LENGTH) (100' LENGTH) (100' LENGTH) (100' LENGTH)	1	0

REVISIONS

NO.	DESCRIPTION	DATE
1		
2		
3		
4		
5		
6		
7		
8		
9		
10		

CAPTIVEAIRE
Highmare Group
4477 Prosper Park N., Raleigh, NC 27617-1000 (919) 875-7000 FAX: (919) 875-7001

CHIPOTLE ITC CROSSING NJ #4715
INTERNATIONAL DRIVE SOUTH,
FLANDERS, NJ 07836

DATE: 1/2/2024
DWG #: 6218838
DRAWN BY: JMB-FC
SCALE: 3/4" = 1'-0"
MASTER DRAWING

SHEET NO. 3

Polaris
214 W. Main Street, Suite 208
Moorestown, NJ 08057
(856) 718-5400

THIS DRAWING IS AN INSTRUMENT OF SERVICE AND IS THE PROPERTY OF POLARIS. IT IS TO BE USED ONLY FOR THE PROJECT AND SITE SPECIFICALLY IDENTIFIED HEREON. IT IS NOT TO BE REPRODUCED, COPIED, OR TRANSMITTED IN ANY FORM OR BY ANY MEANS, WITHOUT THE WRITTEN PERMISSION OF POLARIS.



CHIPOTLE MEXICAN GRILL, INC.
10000 W. CENTURY BLVD., SUITE 2000
DENVER, CO 80201-2000
TEL: (303) 752-1000
WWW.CHIPOTLE.COM

STORE NO.: 4715
ITC CROSSINGS NJ
INTERNATIONAL DRIVE SOUTH
FLANDERS, NJ 07836

REV. DATE	DESCRIPTION
09/29/2023	1.1 SET
02/02/2024	PERMIT SET
03/20/2024	REV SET
03/20/2024	CONSTRUCTION SET

PROFESSIONAL SEAL

APPROVE & SEAL DRAWING
REGISTERED PROFESSIONAL ENGINEER, LICENSE NO. 12
EXPIRES 01/31/2025
000000000000

DATE: 1/2/2024
DWG #: 6218838
DRAWN BY: JMB-FC
SCALE: 3/4" = 1'-0"
MASTER DRAWING

SHEET NO. 3

M-403
5 OF 15

HOOD SHOP DRAWING PRODUCED BY
MANUFACTURER - FOR REFERENCE ONLY



Polaris
214 W. Main Street, Suite 208
Moorestown, NJ 08057
(856) 718-5400

THIS DRAWING IS AN INSTRUMENT OF SERVICE AND IS
THE PROPERTY OF POLARIS INC. IT IS TO BE USED ONLY FOR THE PROJECT
AND SITE SPECIFICALLY IDENTIFIED HEREON. IT IS NOT TO BE REPRODUCED,
COPIED, OR TRANSMITTED IN ANY FORM OR BY ANY MEANS, ELECTRONIC OR
MECHANICAL, INCLUDING PHOTOCOPYING, RECORDING, OR BY ANY INFORMATION
SYSTEMS WITHOUT THE WRITTEN PERMISSION OF POLARIS INC.



STORE NO.: 4715
ITC CROSSINGS NJ
INTERNATIONAL DRIVE SOUTH
FLANDERS, NJ 07836

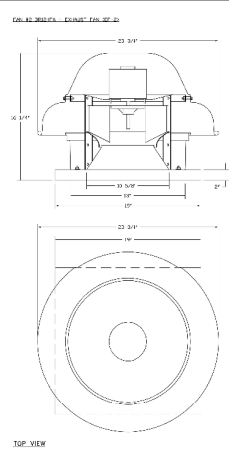
REV. DATE	DESCRIPTION
09/29/2023	1.0 SET
02/02/2024	PERMIT SET
03/25/2024	REV SET
03/26/2024	CONSTRUCTION SET

PROFESSIONAL SEAL

APPROVED BY: J. G. ...
REGISTERED PROFESSIONAL ENGINEER, CIVIL ENGINEER, N.J.
LICENSE NO. ...
20133

PROJECT TITLE:
CAPTIVEAIRE
DRAWINGS

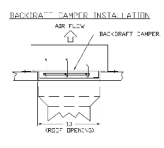
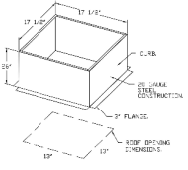
SHEET NUMBER:
M-406
8 OF 15



FEATURES:
- BUILT UP CONSTRUCTION
- NO BELLS/ROLLERS
- NO WELD SEAMS
- 1/4\"/>

DETAILS:
- 1/4\"/>

NOTES:
- SEE OTHER DRAWINGS FOR HOOD AND
- ALL DIMENSIONS ARE IN INCHES UNLESS
- OTHERWISE SPECIFIED



REVISIONS

NO.	DATE	DESCRIPTION

CAPTIVEAIRE
Engineering Group
4801 Ferguson Blvd., Suite 100, Flemington, NJ 08822
www.captiveaire.com

CHIPOTLE ITC CROSSINGS NJ #4715
INTERNATIONAL DRIVE SOUTH,
FLANDERS, NJ, 07836

DATE: 7/9/2024
DWG. NO.: 62152-02
BY: ...
DRAWN: HS-4C
SCALE: 3/4" = 1'-0"
MASTER DRAWING

SHEET NO.: 8

2024-DBR2/PW1.2

HOOD SHOP DRAWING PRODUCED BY
MANUFACTURER - FOR REFERENCE ONLY



Polaris
214 W. Main Street, Suite 208
Moorestown, NJ 08057
(856) 718-5400

THIS DRAWING IS AN INSTRUMENT OF SERVICE AND IS THE PROPERTY OF CAPTIVEAIRE. IT IS TO BE USED ONLY FOR THE PROJECT AND SITE SPECIFICALLY IDENTIFIED ON THE DRAWING. IT IS NOT TO BE REPRODUCED, COPIED, OR TRANSMITTED IN ANY FORM OR BY ANY MEANS, ELECTRONIC OR MECHANICAL, INCLUDING PHOTOCOPYING, RECORDING, OR BY ANY INFORMATION STORAGE AND RETRIEVAL SYSTEM.



CHIPOTLE MEXICAN GRILL, INC.
10000 W. CENTURY BLVD.
GRAND CENTRAL STATION
DENVER, CO 80202
TEL: 303.733.9000
WWW.CHIPOTLE.COM

STORE NO.: 4715
ITC CROSSINGS NJ
INTERNATIONAL DRIVE SOUTH
FLANDERS, NJ 07836

REV. DATE	DESCRIPTION
09/29/2023	1. SET
02/07/2024	REVISION 1
03/25/2024	REV SET
03/26/2024	CONSTRUCTION SET

PROFESSIONAL SEAL

Where: I. G. G. ARCHITECTS, P.C.
10000 W. CENTURY BLVD., SUITE 200
DENVER, CO 80202
TEL: 303.733.9000

DATE: 1/5/2024
DWG NO: 6218038
DRAWN BY: JHB-43

SCALE: 3/4" = 1'-0"
MASTER DRAWING

SHEET NO. 7

M-407
9 OF 15

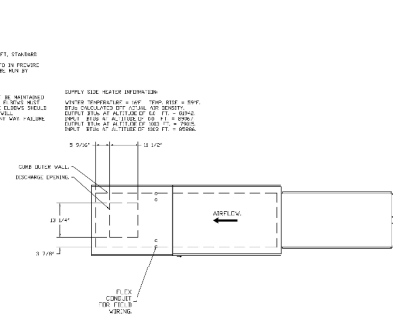
NO.	DESCRIPTION	DATE
1	ISSUED FOR PERMIT	09/29/2023
2	REVISED PER PERMIT	02/07/2024
3	REVISED PER PERMIT	03/25/2024
4	REVISED PER PERMIT	03/26/2024

CAPTIVEAIRE
HighStrength Steel
4847 Piquette Ave. N. Raleigh, NC 27604
www.captiveaire.com

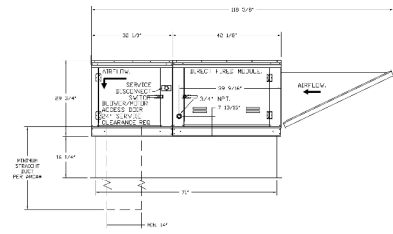
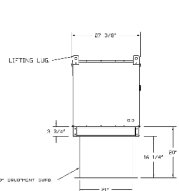
CAPTIVEAIRE ITC CROSSINGS NJ #4715
INTERNATIONAL DRIVE SOUTH,
FLANDERS, NJ 07836

SHEET NO. 7

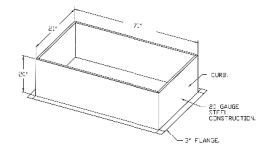
FIG. #3 HODS - WEATHER SHIELD
1. BRACKETS SHALL BE INSTALLED TO THE INSIDE OF HOODS TO SUPPORT HOOD FROM
2. BRACKETS SHALL BE 1/2" THICK
3. BRACKETS SHALL BE 1/2" WIDE
4. BRACKETS SHALL BE 1/2" HIGH
5. BRACKETS SHALL BE 1/2" LONG
6. BRACKETS SHALL BE 1/2" SPACED
7. BRACKETS SHALL BE 1/2" FROM THE HOOD
8. BRACKETS SHALL BE 1/2" FROM THE WALL
9. BRACKETS SHALL BE 1/2" FROM THE CEILING
10. BRACKETS SHALL BE 1/2" FROM THE FLOOR
11. BRACKETS SHALL BE 1/2" FROM THE CURB
12. BRACKETS SHALL BE 1/2" FROM THE FLANGE



DIRECT FINED (DF) PROFILE PLATE ASSEMBLY
THIS DRAWING IS AN INSTRUMENT OF SERVICE AND IS THE PROPERTY OF CAPTIVEAIRE. IT IS TO BE USED ONLY FOR THE PROJECT AND SITE SPECIFICALLY IDENTIFIED ON THE DRAWING. IT IS NOT TO BE REPRODUCED, COPIED, OR TRANSMITTED IN ANY FORM OR BY ANY MEANS, ELECTRONIC OR MECHANICAL, INCLUDING PHOTOCOPYING, RECORDING, OR BY ANY INFORMATION STORAGE AND RETRIEVAL SYSTEM.



OPTIONAL FULL SECTION CORNERS



2024-DBF2/PW1.2

FIRE RATED ENCLOSURE - GREASE DUCTS

1. DUCTAL ENCLAVES FROM ASTM A 663 TYPE 304/316 SS AND U-LEAKS IN ALL DIRECTIONS. ENCLOSURES TO COMPLY WITH LISTED PRODUCT A - 90 - HOUR ENCLOSURE TEST. ALL ENCLOSURES MUST BE TESTED IN ACCORDANCE WITH ASTM E 119, UL 10C, ETC. EVALUATION REPORT IS TO BE PROVIDED.

2. COMPLY TO THE FOLLOWING CODES:
 - NFPA 96
 - INTERNATIONAL MECHANICAL CODES
 - INTERNATIONAL FIRE CODES
 - LOCAL AMENDMENTS

3. INSTALLATION SHALL BE IN ACCORDANCE WITH THE FOLLOWING:
 - INSTALLATION SHALL BE IN ACCORDANCE WITH THE FOLLOWING:
 - 1.5 IN. (38.1 MM) GALV. STEEL BRASS PLATE 1/2 IN. (12.7 MM) FROM TRANSVERSE JOINTS AND MINIMUM 1/4 IN. (6.35 MM) FROM EDGES.

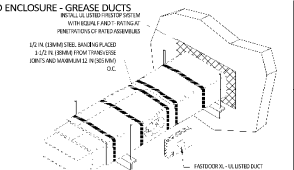
4. MINIMUM 1/4 IN. (6.35 MM) GALV. STEEL BRASS PLATE 1/2 IN. (12.7 MM) FROM TRANSVERSE JOINTS AND MINIMUM 1/4 IN. (6.35 MM) FROM EDGES.

5. INSTALL U-LEAKS AND U-LEAKS THAT MEET THE LISTED PRODUCT ACCESS DOORS. DOORS SHALL BE KEPT CLOSED AT ALL TIMES. ALL DOORS SHALL BE KEPT CLOSED AT ALL TIMES. ALL DOORS SHALL BE KEPT CLOSED AT ALL TIMES.

6. SHORT HANGER STRIPS DO NOT NEED TO BE INSTALLED PROVIDED THE HANGER STRIP IS MINIMUM 3/8 IN. (9.5 MM) BY 1/2 IN. (12.7 MM) MINIMUM 2 1/2 IN. (63.5 MM) CLEARANCE FROM SUPPORT SURFACE.

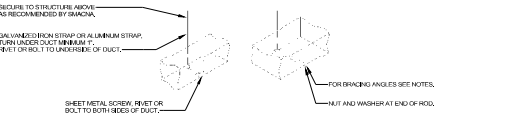
7. DUCTAL ENCLAVES DUCT WRAP SHALL BE INSTALLED DIRECTLY OVER THE DUCT AND APPLIED FROM THE HOOD CONNECTION TO THE CONNECTION TO THE MAIN SUPPLY DUCT.

8. DUCTAL ENCLAVES DUCT WRAP SHALL BE INSTALLED IN STRICT ACCORDANCE WITH MANUFACTURER'S INSTRUCTIONS AND LISTINGS.



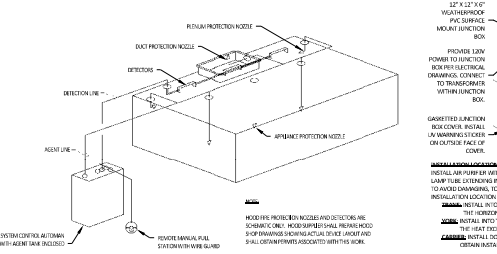
INDUSTRIAL AIR SYSTEMS, INC.
 P.O. Box 925
 441 Jct. 67th St. #1000
 Parma, OH 44129
 Phone: (440) 548-4818

HANG DUCT PROFILES (HANGERS)	HANGERS AT 10' SPACING		HANGERS AT 12' SPACING		HANGERS AT 14' SPACING		HANGERS AT 16' SPACING	
	STRAP	HANGERS	STRAP	HANGERS	STRAP	HANGERS	STRAP	HANGERS
FDH-30	1702 GA.	10 GA. (R197)	1702 GA.	10 GA. (R197)	1702 GA.	12 GA. (R197)	1702 GA.	12 GA. (R197)
FDH-32	1708 GA.	3/8"	1702 GA.	3/8"	1702 GA.	3/8"	1702 GA.	3/8"
FDH-36	1708 GA.	3/8"	1708 GA.	3/8"	1708 GA.	3/8"	1702 GA.	3/8"
FDH-37	1708 GA.	3/8"	1708 GA.	3/8"	1708 GA.	3/8"	1702 GA.	3/8"
FDH-38	1708 GA.	3/8"	1708 GA.	3/8"	1708 GA.	3/8"	1702 GA.	3/8"
FDH-40	1708 GA.	3/8"	1708 GA.	3/8"	1708 GA.	3/8"	1702 GA.	3/8"
FDH-42	1708 GA.	3/8"	1708 GA.	3/8"	1708 GA.	3/8"	1702 GA.	3/8"
FDH-44	1708 GA.	3/8"	1708 GA.	3/8"	1708 GA.	3/8"	1702 GA.	3/8"
FDH-46	1708 GA.	3/8"	1708 GA.	3/8"	1708 GA.	3/8"	1702 GA.	3/8"
FDH-48	1708 GA.	3/8"	1708 GA.	3/8"	1708 GA.	3/8"	1702 GA.	3/8"

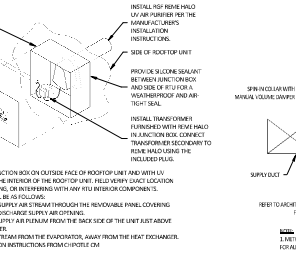


5. HVAC - DUCT HANGER DETAILS
NOT TO SCALE

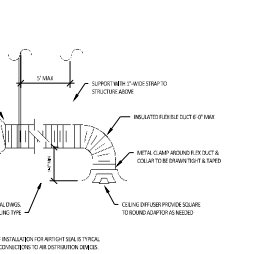
6. FIREMASTER DUCT WRAP - UL-119K-1-G18
NOT TO SCALE



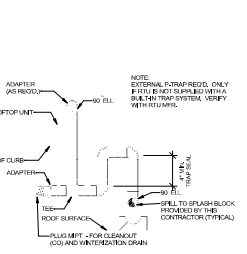
6. HVAC - FIRE SUPPRESSION SYSTEM SCHEMATIC
NOT TO SCALE



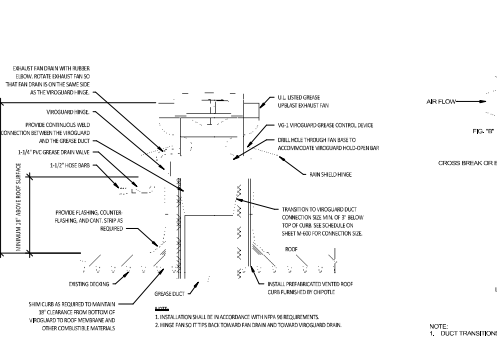
6. HVAC - AIR PURIFIER INSTALLATION
NOT TO SCALE



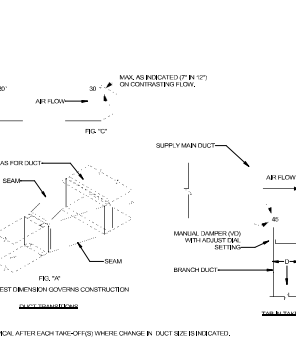
6. HVAC - DIFFUSER CONNECTION
NOT TO SCALE



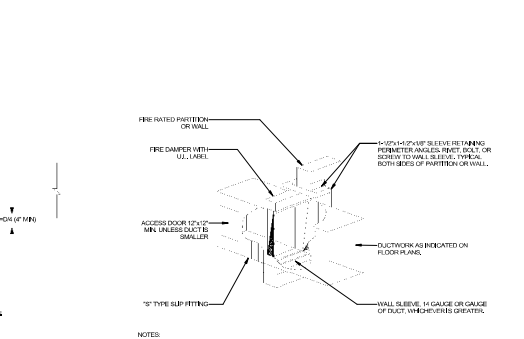
6. HVAC - CONDENSATE PIPING FROM RTU
NOT TO SCALE



6. GREASE EXHAUST FAN
NOT TO SCALE



6. HVAC - DUCT TRANSITION DETAILS
NOT TO SCALE



6. HVAC - FIRE DAMPER DETAIL
NOT TO SCALE

Polaris
 214 W. Main Street, Suite 208
 Moorestown, NJ 08055
 (856) 718-5400



STORE NO.: 4715
 ITC CROSSINGS NJ
 INTERNATIONAL DRIVE SOUTH
 FLANDERS, NJ 07836

REV. DATE	DESCRIPTION
09/29/2023	1. SET
10/20/2024	1. PERMIT SET
03/25/2024	800 SET
03/26/2024	CONSTRUCTION SET

PROFESSIONAL SEAL
 Andrew J. Gullone, P.E.
 10000 1st Avenue, Suite 100
 Moorestown, NJ
 08055-1405
 20133
 2013701
HWAC DETAILS