

HOOD NUMBER	HOOD MODEL	EXHAUST AIR FLOW REQUIREMENTS						GREASE EXTRACTOR			HOOD CONSTRUCTION	HOOD WEIGHT (LBS)	SUPPLY AIR REQUIREMENTS					
		EXHAUST CFM	T.A.B. PORT STATIC PRESSURE	TOTAL HOOD STATIC PRESSURE	EXHAUST COLLAR			QTY.	SIZE				TYPE	SUPPLY CFM	SUPPLY STATIC PRESSURE	SUPPLY COLLAR		
					QTY.	LENGTH	WIDTH		L	H						QTY.	LENGTH	WIDTH
1-1	KVC	1657	.18"	.28"	1	12"	12"	5	20"	13"	KSA	ALL 18 GA. 304 S.S.	854	.1125	.16"	1	25"	6"
1-2	KVC	1772	.21"	.32"	1	12"	12"	5	20"	13"	KSA	ALL 18 GA. 304 S.S.	846	.1125	.17"	1	25"	6"

TOTAL EXH. CFM = 3429

TOTAL SUPPLY CFM = 2250

CONNECTION #	CONNECTION DESCRIPTION	FROM	TO
E1-H	120V, 15AMP - HOOD LIGHT POWER - 3 WIRES	BUILDING SOURCE	HOOD 1-1
E2-H	FIELD CONNECTION FOR HOOD LIGHTS	HOOD 1-1	HOOD 1-2
E3-H	FIELD CONNECTION FOR TEMP SENSORS	HOOD 1-1	HOOD 1-2
E4-H	120V/1PH - MOTOR STARTER POWER	BUILDING SOURCE	HOOD 1-1
E5-H	120V/1PH - MOTOR STARTER POWER	BUILDING SOURCE	HOOD 1-1

GENERAL SPECIFICATIONS

- HOOD CONSTRUCTION AND DESIGN MEETS NFPA 96 AND UL 710 STANDARD.
- HOOD IS NSF AND ETL LISTED UNDER THE FOLLOWING FILE NUMBER: ETL #103143204PRT-001
- ALL INSTALLATION WORK IS TO BE PERFORMED BY QUALIFIED PERSONS AND IN ACCORDANCE WITH STATE AND LOCAL BUILDING CODE REQUIREMENTS.
- THE INSTALLATION SHALL BE IN ACCORDANCE WITH NFPA 96 REMOVAL OF SMOKE AND GREASE LADEN VAPORS FROM COMMERCIAL COOKING EQUIPMENT.
- ALL EXHAUST DUCTWORK AND TRANSITIONS ARE TO BE PROVIDED BY THE HVAC CONTRACTOR.
- CLEARANCE FROM HOOD AND DUCTS TO COMBUSTIBLE MATERIAL SHALL BE PER APPLICABLE BUILDING CODES.
- FOR PROPER OPERATION OF THE HOOD SYSTEM, IT IS THE RESPONSIBILITY OF THE GENERAL CONTRACTOR TO HAVE THE HOOD BALANCED AND TESTED TO ENSURE THAT THE EXHAUST AND SUPPLY REQUIREMENTS OF THE HOOD ARE MET.

INSTALLATION REQUIREMENTS

- KITCHEN EQUIPMENT CONTRACTOR'S REQUIREMENTS
- PROVIDE DRAWINGS TO APPROPRIATE TRADES REFERENCING UTILITY SERVICE AND COORDINATE FINAL CONNECTION.
 - DELIVER, ASSEMBLE AND INSTALL HALTON SYSTEM PER DRAWING.
 - FURNISH WIRING AND PLUMBING DIAGRAMS TO END USER.
 - THE K.E.C. MUST INFORM HALTON OF ANY CHANGES IN EQUIPMENT OR BUILDING STRUCTURE. FIELD MODIFICATIONS ARE THE RESPONSIBILITY OF THE K.E.C.
 - IF HALTON MANUAL EXHAUST VOLUME DAMPERS ARE PROVIDED, THE K.E.C. IS RESPONSIBLE FOR THEIR INSTALLATION OR TO MAKE ARRANGEMENTS WITH OTHER TRADES FOR THEIR INSTALLATION.
 - IF HALTON MODEL KVL BACKSHELF STYLE HOODS ARE PROVIDED, THE K.E.C. IS RESPONSIBLE FOR THE INSTALLATION OF THE CAPTURE-JET FAN.
- ELECTRICAL CONTRACTOR'S REQUIREMENTS
- PROVIDE AND CONNECT ALL REQUIRED VOLTAGES, CONNECTORS, WIRING, CONDUIT, ETC., PER NEC AND ALL APPLICABLE LOCAL CODES.

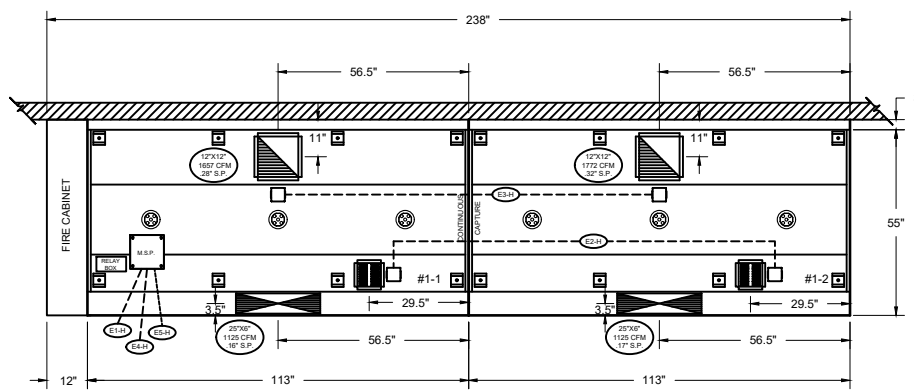
ELECTRICAL EQUIPMENT REQUIREMENTS

- FLUORESCENT LIGHT FIXTURE: 40 WATT MAX BULB= 67 AMP EA.
- RECESSED INCANDESCENT LIGHT FIXTURE: 150 WATT MAX BULB= 1.25 AMP EA.
- GLOBE INCANDESCENT LIGHT FIXTURE: 100 WATT MAX BULB= .83 AMP EA.
- LED LIGHT FIXTURES= .30 AMP EA.
- CAPTURE JET FAN= .72 AMP EA.
- **ALL HOOD CIRCUITS ARE NOT TO EXCEED 15 AMP**
- **LIGHT BULBS, IF REQUIRED, ARE TO BE PROVIDED BY OTHERS**

CEILING HEIGHT NOTE

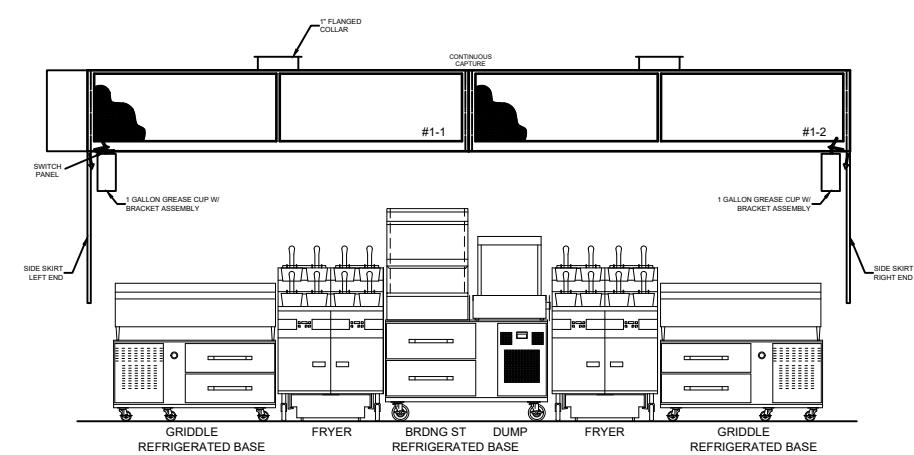
IF HALTON COMPANY IS TO PROVIDE CEILING CLOSURE PANELS, THE EXACT DIMENSION OF THE FINISHED CEILING HEIGHT MUST BE PROVIDED PRIOR TO RELEASE.

FINISHED CEILING HEIGHT A.F.F.:

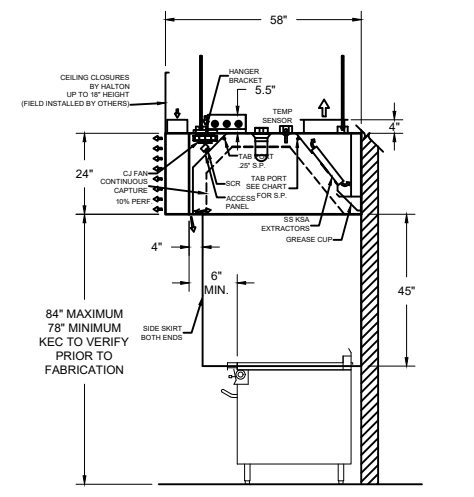


ITEM # 1-1, 1-2
PLAN VIEW

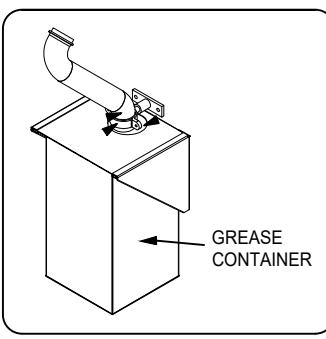
NOTE
T-STAT IS FACTORY PRE-SET FOR 95 DEGREES. IF SPACE CONDITIONS EXCEED 95 DEGREES WITHOUT COOKING TAKING PLACE, THEN A FIELD ADJUSTMENT OF THE T-STAT WILL BE REQUIRED BY PERSONNEL OTHER THAN HALTON. T-STAT IS A SAFETY INTERLOCK ONLY. IT IS NOT INTENDED AS A PRIMARY MEANS OF ENGAGING THE EXHAUST FAN.



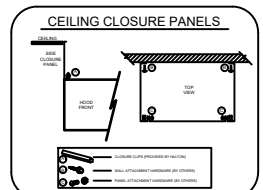
ITEM # 1-1, 1-2
ELEVATION VIEW



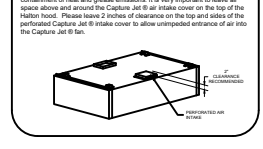
ITEM # 1-1, 1-2
SECTION VIEW



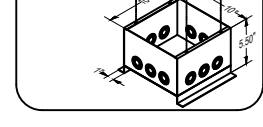
GREASE CONTAINER



CEILING CLOSURE PANELS



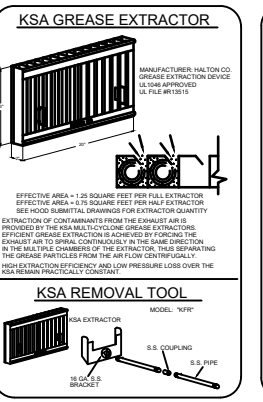
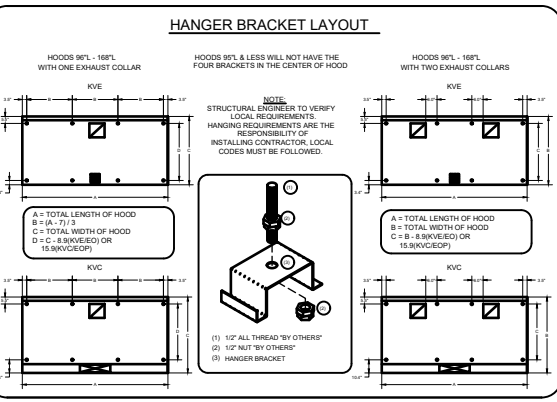
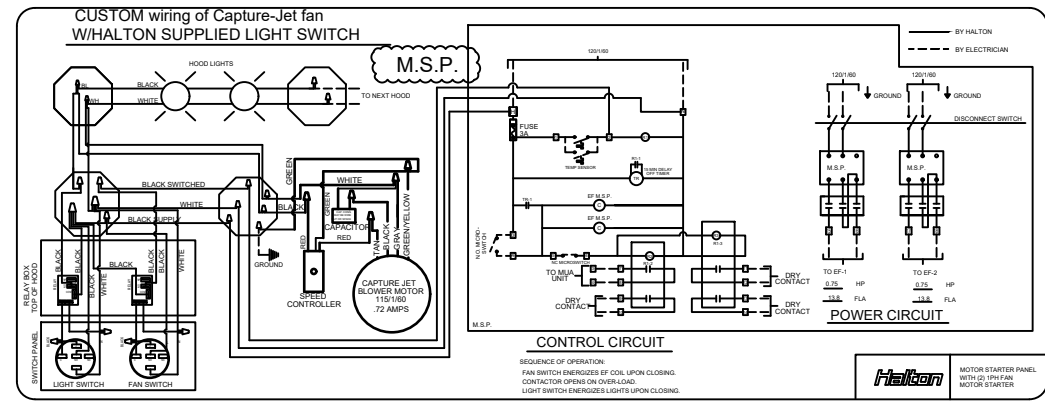
CAPTURE JET CLEARANCE DETAIL



M.S.P.

****NOTE****

THE HOODS SHOWN ON THIS DRAWING IS DESIGNED AS THOUGH A SINGLE EXHAUST FAN WILL BE USED FOR HOOD 1-1 & HOOD 1-2. ONE TIMER PANEL IS REQUIRED PER EXHAUST FAN. IT IS THE RESPONSIBILITY OF THE F.S.E.C. TO INFORM HALTON OF THE NUMBER OF EXHAUST FANS BEING UTILIZED ON THIS PROJECT.



PERFORMANCE CRITERIA

OTHER MANUFACTURERS WISHING TO OFFER AN ALTERNATE TO THE SPECIFIED MANUFACTURER MUST APPLY FOR PERMISSION TO DO SO IN WRITING FROM THE OFFICE OF THE SPECIFYING CONSULTANT. APPLICATION MUST BE RECEIVED BY THE CONSULTANT AT LEAST TEN WORKING DAYS PRIOR TO THE BID DATE. ANY ALTERNATE SYSTEM MUST MEET CONSTRUCTION AND PERFORMANCE REQUIREMENTS AND EFFICIENCIES AS OUTLINED IN THIS SPECIFICATION.

REQUESTS FOR APPROVAL MUST INCLUDE GREASE FILTRATION PERFORMANCE DATA (MICRON SIZE), EXTRACTION EFFICIENCY AND MANUFACTURER'S OWN EXHAUST AIR FLOW CALCULATIONS BASED ON THE CONNECTIVE HEAT LOAD OF COOKING EQUIPMENT BENEATH THE HOOD.

EFFICIENCY COMPARISON DATA TO BE PERFORMED IN ACCORDANCE WITH THE MOST CURRENT ASTM STANDARD F1704 AND INCLUDE RESULTS FOR THE REQUIRED CAPTURE AND CONTAINMENT PERFORMANCE TO ASTM F1704 AND SUPPLY AIR TEMPERATURE REQUIREMENT OF 74°F.

MAKE UP AIR WILL BE CALCULATED SO THAT THE SAME AMOUNT OF AIR WILL BE TAKEN FROM THE ZONE AS IS REQUIRED BY THE SPECIFIED SYSTEM. AN ADDITIONAL LOAD CANNOT BE PLACED ON THE KITCHEN HVAC SYSTEM.

MANUFACTURER MUST PROVIDE A WRITTEN GUARANTEE OF PERFORMANCE, ENSURING THE SPECIFYING ENGINEER THAT THE SYSTEM WILL PERFORM TO THE ENGINEER'S SATISFACTION WHEN INSTALLED AND BALANCED ACCORDING TO DESIGN AIR FLOWS AND RESULTS OF ASTM STANDARD F1704 TEST. (AS DETERMINED BY TAB PORTS AND PRESSURE VS. AIR FLOW CURVES). CONSULTANT RESERVES THE RIGHT TO REJECT ANY SYSTEM WHICH, WHEN INSTALLED, DOES NOT PROVIDE CAPTURE AND CONTAINMENT AT THE THRESHOLD FLOW RATE DETERMINED IN ASTM F1704. REJECTED SYSTEM MUST BE REPLACED WITH SPECIFIED SYSTEM, WITH ALL REPLACEMENT COSTS PAID BY MANUFACTURER OF REJECTED SYSTEM.

ANY CHANGES IN THE SPECIFIED SIZING OF POWER WIRING, FAN SIZE, HORSEPOWER REQUIREMENTS, OR GAS LINES DUE TO THE USE OF ANY SYSTEM OTHER THAN THAT WHICH IS SPECIFIED IS THE RESPONSIBILITY OF THE ALTERNATE HOOD MANUFACTURER, AND MUST BE COORDINATED BY THE HOOD MANUFACTURER AND CONTRACTORS INVOLVED.

THIS DRAWING MUST BE CHECKED, SIGNED AND RETURNED TO THE APPROPRIATE FACTORY. PLEASE VERIFY THE FOLLOWING:

- ALL DIMENSIONAL INFORMATION, MOUNTING POSITIONS, LOCATION AND TYPE OF COOKING EQUIPMENT.
- THE LOCATION AND TYPE OF COOKING EQUIPMENT.

NOTE TO CHANGES IN COOKING EQUIPMENT SUCH AS INCREASED ENERGY INPUTS OR EQUIPMENT POSITION MAY AFFECT EXHAUST AIR FLOW. HALTON MUST BE NOTIFIED IF ANY OF THESE CHANGES OCCUR. A RECALCULATION EXHAUST AIR FLOW MAY BE REQUIRED.

REVISION AND RESUBMIT WITH NO CHANGES WITH CHANGES AS NOTED

APPROVED FOR FABRICATION WITH NO CHANGES

DATE

MAIL APPROVED DRAWINGS TO APPROPRIATE FACTORY BELOW:

WEBSITE: www.halton.com

HALTON CO. (USA)
101 INDUSTRIAL DRIVE
SCOTTSVILLE, KY 42164

HALTON CO. (CANADA)
1021 BREVIK PLACE
MISSISSAUGA, ON L4W 3R7
1-905-624-0301

PROJECT: SHAKE SHACK OAK LAWN, IL

LOCATION: OAK LAWN, IL

DRAWN BY: NC DATE: 10.21.20

SCALE: NTS

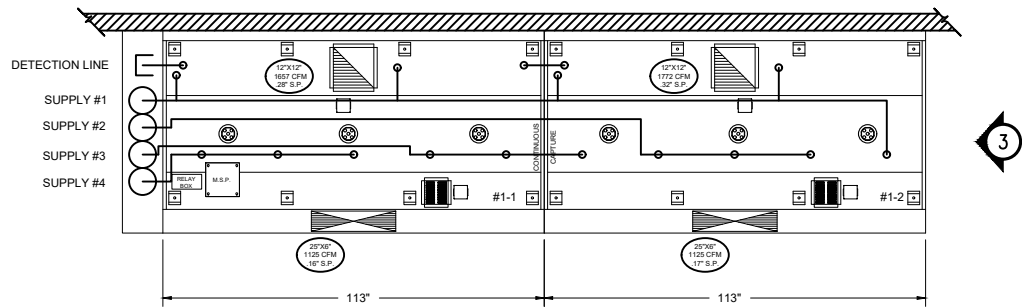
CONSULTANT: Halton

DRAWING TITLE: HOOD DETAILS

DRAWING No.: U20-808

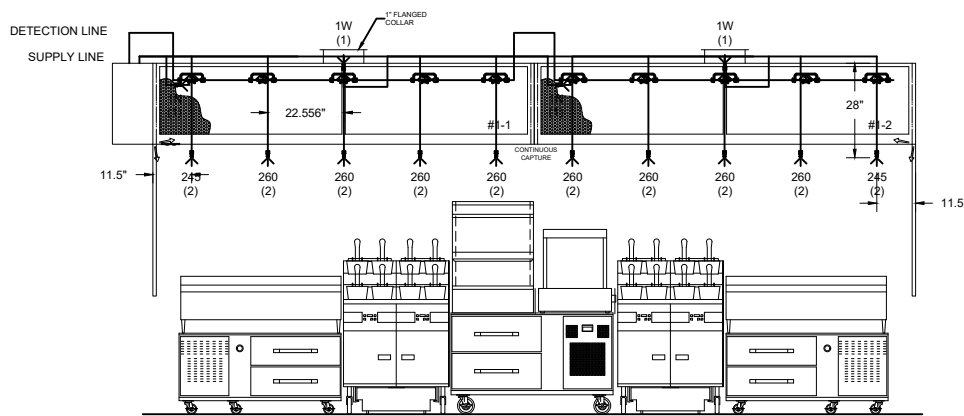
REV. NO.: 3 SHEET NO.: 1 of 4

ANSUL R-102 SYSTEM
 MOUNTED IN FIRE CABINET:
 (1) OEM REGULATED RELEASE
 (1) REGULATED ACTUATOR
 (4) 3 GALLON TANKS



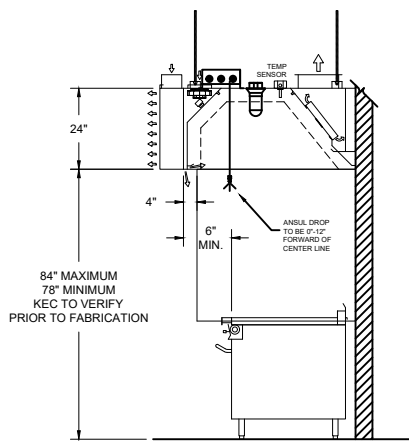
1 ITEM # 1-1, 1-2
 PLAN VIEW

ALL APPLIANCE DROPS TO HAVE SWIVELS

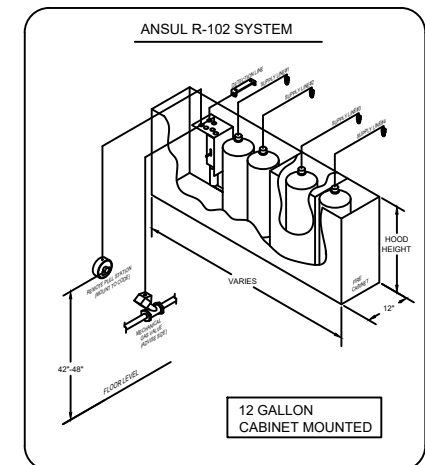


2 ITEM # 1-1, 1-2
 ELEVATION VIEW

- 1) ANSUL R-102 FIRE SYSTEM
- 2) FOUR TANK SYSTEM (12 GALLON)
- 3) 3/8\"/>
- 4) MECHANICAL GAS VALVE = (ADVISE SIZE)



3 ITEM # 1-1, 1-2
 SECTION VIEW



FLOW POINT CHART

NOZZLE TYPE	NOZZLE FLOW PT.	NOZZLE QUANTITY	TOTAL FLOW PT.
3N	3	0	0
290	2	0	0
260	2	8	16
245	2	2	4
230	2	0	0
2W	2	0	0
2120	2	0	0
1W	1	2	2
1N	1	2	2
1F	1	0	0
1/2N	1/2	0	0
TOTAL FLOW POINTS USED		24	
MAX. SYSTEM FLOW POINTS:		24(12GALLON)	

****NOTE****
 ANSUL R-102
 OVERLAPPING SYSTEM

ANSUL NOTES

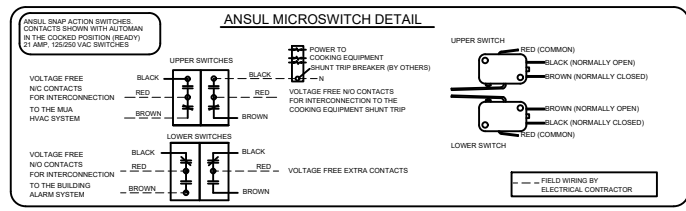
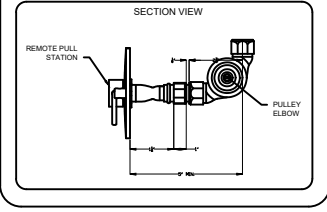
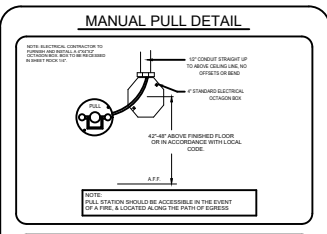
GENERAL NOTES:
 1. THIS INSTALLATION IS TO BE MADE IN ACCORDANCE WITH THE ANSUL R-102 OVERLAPPING SYSTEM MANUAL AND IN ACCORDANCE WITH ALL STATE AND LOCAL CODES.
 2. THE STAINLESS STEEL CABLE FOR THE DETECTOR AND REMOTE PULL STATION IS TO BE INSTALLED BY AN AUTHORIZED AND FACTORY TRAINED DISTRIBUTOR OR SERVICE REPRESENTATIVE.
 3. FIRE SUPPRESSION CONTRACTOR SHALL HAVE AN ADDITIONAL TRIP FOR AN ONSITE PRE-TEST WITH GENERAL CONTRACTOR, MECHANICAL, PLUMBING, BUILDING ALARM AND ELECTRICAL CONTRACTORS PRIOR TO FINAL SUPPRESSION WITH LOCAL A.H. DEFICIENCIES SHALL BE RESOLVED BY RESPONSIBLE TRADE BEFORE THE FINAL CAN BE SCHEDULED. TEST SHOULD BE CONDUCTED AT 3 DAYS (MINIMUM) PRIOR TO SCHEDULED FINAL.
 4. THIS INSTALLATION IS TO BE INSPECTED, PUT INTO OPERATION AND CERTIFIED BY AN AUTHORIZED AND FACTORY TRAINED DISTRIBUTOR OR SERVICE REPRESENTATIVE.
 5. ELECTRICAL CONTACTS AND WIRING FOR APPLIANCE SHUT OFF TO BE PROVIDED BY THE ELECTRICAL CONTRACTOR.
 6. ANSUL R-102 RESTAURANT FIRE SUPPRESSION SYSTEMS HAVE BEEN TESTED AND ARE LISTED BY UNDERWRITERS LABORATORIES INC. AS FIRE-ENGINEERED SYSTEMS. AND WHEN INSTALLED AS SHOWN ON THIS DRAWING SHALL COMPLY WITH ALL RELEVANT ANSUL INSTALLATION RECHARGE INSPECTION AND MAINTENANCE MANUALS AND SHALL COMPLY WITH NFPA 96 WHEN INSTALLED AND CERTIFIED BY AUTHORIZED TRAINED ANSUL DISTRIBUTORS IN ACCORDANCE WITH THE MANUAL.
 7. ALL AGENT DISTRIBUTION PIPING AND DETECTION CONDUIT HOOD PENETRATIONS MUST BE PROPERLY SEALED IN ACCORDANCE WITH NFPA 96.
 8. ALL CONNECTIONS TO THE FIRE SUPPRESSION LOW VOLTAGE AND HIGH VOLTAGE ANSUL MICRO-SWITCHES MUST BE MADE IN A U.L. RATED JUNCTION BOX OUTSIDE OF THE ANSUL AUTOMAN COMPARTMENT TO KEEP FORM VOIDING THE LISTING OF THE ANSUL SYSTEM.

DISTRIBUTION PIPING REQUIREMENT NOTES:
 1. PIPE SHALL BE 3/8\"/>

NOTE:
 HALTON COMPANY WILL SUPPLY ANSUL COMPONENTS AND PRE-PIPED HOODS PER PUBLISHED ANSUL GUIDELINES AND RECOMMENDATIONS. IT IS THE RESPONSIBILITY OF THE F.S.E.C. TO INFORM HALTON OF ANY SPECIAL REQUIREMENTS OF THE LOCAL JURISDICTION PRIOR TO RELEASE OF EQUIPMENT.

NOTE:
 ALL PIPING FOR LOW PROXIMITY APPLIANCE PROTECTION SHALL BE PROVIDED & INSTALLED BY THE INSTALLING ANSUL DISTRIBUTOR & NOT BY HALTON.

NOTE:
 HAND HELD EXTINGUISHERS, IF REQUIRED, ARE TO BE PROVIDED BY OTHERS.



THIS DRAWING MUST BE CHECKED, SIGNED AND RETURNED TO THE APPROPRIATE FACTORY. PLEASE VERIFY THE FOLLOWING:
 1. ALL DIMENSIONAL INFORMATION, MOUNTING POSITIONS AND TOLERANCES.
 2. THE LOCATION AND TYPE OF COOKING EQUIPMENT.
 NOTE TO APPLICATOR: COOKING EQUIPMENT SUCH AS INCREASED ENERGY INPUTS OR EQUIPMENT POSITION MAY AFFECT EXHAUST AIR FLOW. HALTON MUST BE NOTIFIED IF ANY OF THESE CHANGES OCCUR. A RECALCULATION EXHAUST AIR FLOW MAY BE REQUIRED.

APPROVED FOR FABRICATION: REVISE AND RESUBMIT WITH NO CHANGES WITH CHANGES AS NOTED

DATE: _____

MAIL APPROVED DRAWINGS TO APPROPRIATE FACTORY BELOW:

WEBSITE: www.halton.com	DATE: 11.09.20
HALTON CO. (USA)	BY: NC
101 INDUSTRIAL DRIVE	NC 11.24.20
SCOTTSDALE, KY 42164	SKM 02.26.21
1-270-237-5600	

PROJECT: SHAKESHACK OAK LAWN, IL

DATE: 10.21.20

SCALE: NTS

DRAWING TITLE: FIRE SYSTEM DETAILS

DRAWING No.: U20-808

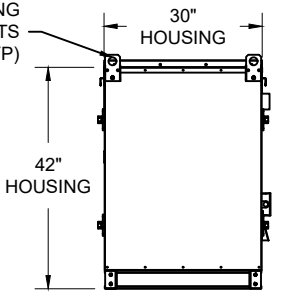
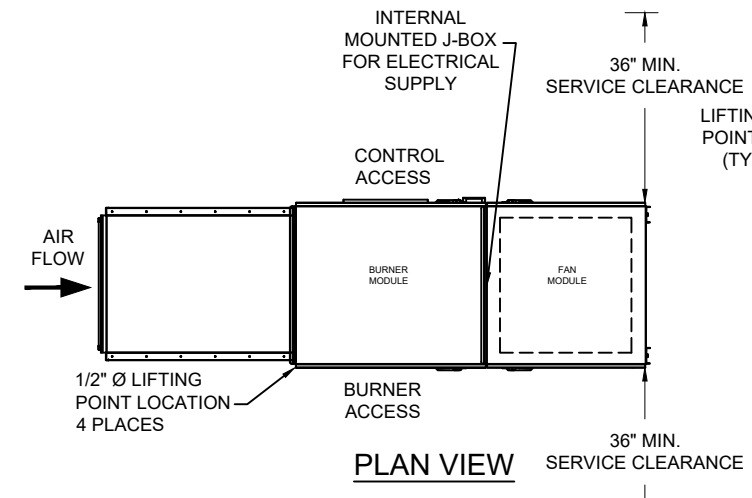
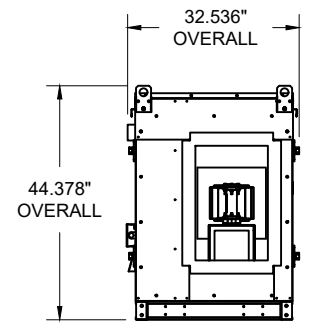
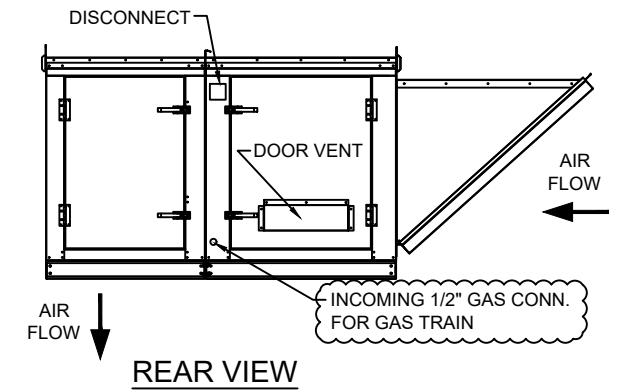
REV. NO.: 3 SHEET NO.: 2 of 4

Halton

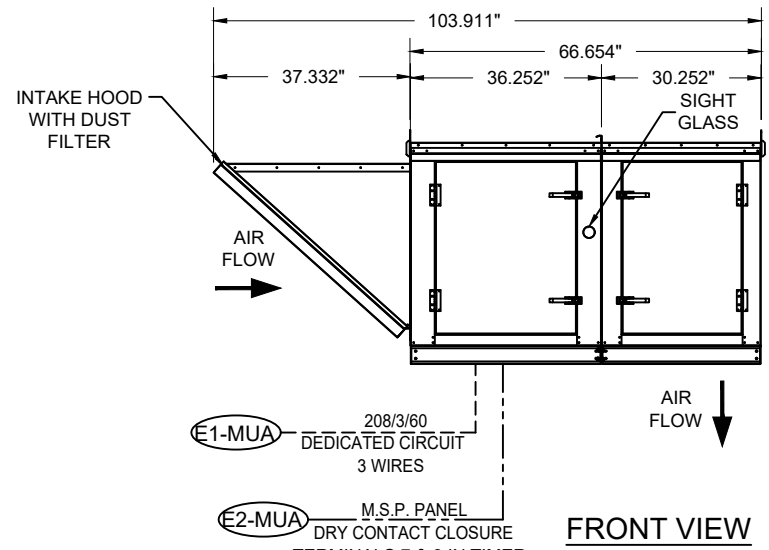
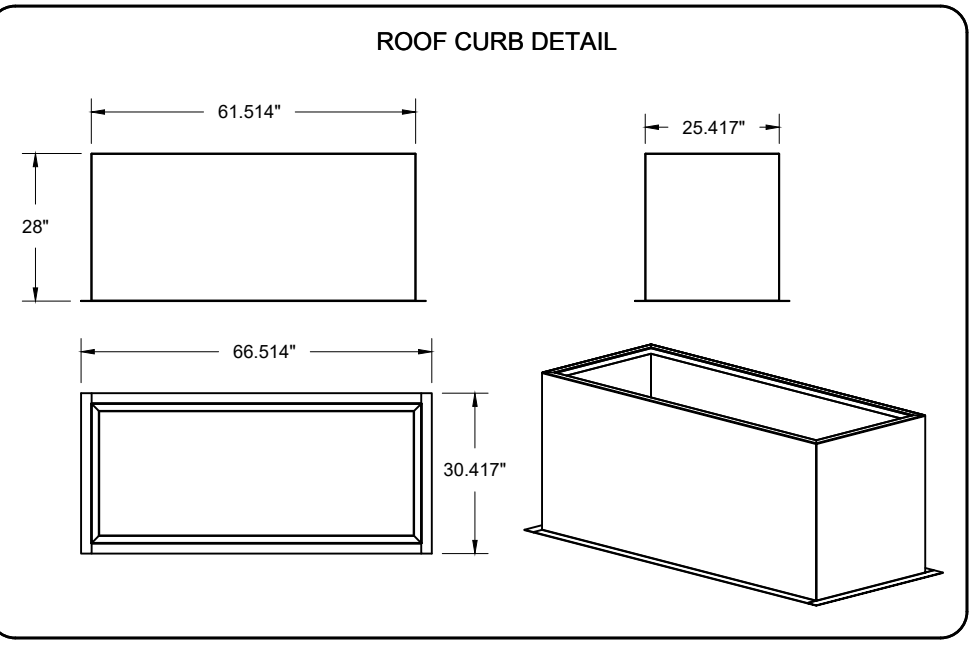
MUA CHART		
DATA	IMPERIAL	METRIC
Model	MUA-DG-2800	
Max. Supply Air	2800 CFM	- l/s
Design Supply Air	2250 CFM	- l/s
Internal S.P.	1.37" W.G.	- PA
External S.P.	0.5" W.G.	- PA
Total S.P.	1.87" W.G.	
Motor	1.5 hp	
Power	0.94 bhp	
Full Load AMPS	6.6	
Motor RPM	1800	
Voltage/Phase/HZ	208/3/60	
Fan RPM	1505	
Mounting	Exterior/Floor	
Blower Model	ANPA 16	
Gas Type	Natural	
Min. Gas Pressure	8" W.C.	
Max. Gas Pressure	14" W.C.	
Gas Line Size	1/2"	
Discharge Temperature	70°	
Temperature Rise	75.1°	
Input MBH	198	
Output MBH	182	
Material Type	G90 Galv. 20GA.	
Paint Color	Unpainted	
Weight	1035 lbs	- kg

STANDARD FEATURES	
<input type="checkbox"/>	Belt Drive Fan (Comefri ATLI)
<input type="checkbox"/>	1" Duct Board Insulation Double Wall
<input type="checkbox"/>	Constant Volume
<input type="checkbox"/>	Unit Mounted Controls
<input type="checkbox"/>	Neoprene Fan Isolators
<input type="checkbox"/>	End Discharge
<input type="checkbox"/>	Gravity Intake Damper
<input type="checkbox"/>	Direct Spark Gas Train
OPTIONS	
<input type="checkbox"/>	Direct Drive Plenum Fan (Comefri ANPA)
<input type="checkbox"/>	No Insulation
<input type="checkbox"/>	Variable Speed (Powerflex 523 VFD)
<input type="checkbox"/>	Motorized Intake Damper
<input type="checkbox"/>	Intake Hood w/ 2" Alum. Mesh Filters & Birdscreen
<input type="checkbox"/>	MERV 8 Filtered Intake (Dust Filter)
<input type="checkbox"/>	Remote DAT (Discharge Air Temperature) Controls
<input type="checkbox"/>	Space Temp Control
<input type="checkbox"/>	Non Insulated Roof Curb
<input type="checkbox"/>	Insulated Roof Curb
<input type="checkbox"/>	Non Insulated Roof Curb w/ Wood Nailer
<input type="checkbox"/>	Insulated Roof Curb w/ Wood Nailer
<input type="checkbox"/>	Seismic Fan Isolators
<input type="checkbox"/>	Gas Train Pressure Gauges
<input type="checkbox"/>	High & Low Gas Pressure Switches
<input type="checkbox"/>	Freeze Stat
<input type="checkbox"/>	Remote Start/Stop Contact
<input type="checkbox"/>	Remote Call for Heat Contact
<input type="checkbox"/>	Down Discharge

ITEM #MUA-01



ELECTRICAL SCHEDULE			
CONNECTION #	CONNECTION DESCRIPTION	FROM	TO
E1-MUA	208/3/60 - FAN MOTOR POWER - 3 WIRES	BUILDING SOURCE	J-BOX
E2-MUA	DRY CONTACT CLOSURE FROM M.S.P. PANEL	M.S.P. PANEL	MUA UNIT



- (E1-MUA) 208/3/60 DEDICATED CIRCUIT 3 WIRES
- (E2-MUA) M.S.P. PANEL DRY CONTACT CLOSURE TERMINALS 7 & 8 IN TIMER PANEL CONNECTING TO TERMINALS 3 & 4 IN MUA

ELECTRICAL CONNECTION WILL COME UP THROUGH CURB INTO BOTTOM OF UNIT

SPECIFICATIONS	
GAS INFORMATION	MIDCO 6" SS BURNER PRESSURE REGULATOR SUPPLIED RTC GAS CONTROLS DISCHARGE TEMPERATURE DIAL MOUNTED IN UNIT HIGH TEMP LIMIT SWITCH SET TO 140°F
ELECTRICAL INFORMATION	208V / 3PH / 60HZ SUPPLY INTEGRAL NON-FUSED DISCONNECT SWITCH PREMIUM EFFICIENCY MOTOR INTEGRAL MOTOR STARTER WITH THERMAL OVERLOADS FIRE PROTECTING INTERLOCK REMOTE START/STOP 50% MUA TURN DOWN
EQUIPMENT SPECIFICATIONS	ENTERING AIR THERMOSTAT/LOW TEMPERATURE CUTOUT EXTERNAL PROFILE ADJUSTMENT WITH PRESSURE GAUGE GALVANIZED FINISH 0" CLEARANCE ON TOP & BOTTOM OF UNIT UNIT SHIPS ASSEMBLED IN ONE PIECE 1" CLEARANCE TO COMBUSTIBLE ON ENDS LISTED 18" FROM COMBUSTIBLE ON SIDES

THIS DRAWING MUST BE CHECKED, SIGNED AND RETURNED TO THE APPROPRIATE FACTORY. PLEASE VERIFY THE FOLLOWING:

- ALL DIMENSIONAL INFORMATION, MOUNTING POSITIONS AND WEIGHTS.
- THE LOCATION AND TYPE OF COOKING EQUIPMENT.

NOTE TO APPROVER: ANY CHANGES IN COOKING EQUIPMENT SUCH AS INCREASED ENERGY INPUTS OR EQUIPMENT POSITION MAY AFFECT EXHAUST AIR FLOW. HALTON MUST BE NOTIFIED IF ANY OF THESE CHANGES OCCUR. A RE-CALCULATION EXHAUST AIR FLOW MAY BE REQUIRED.

APPROVED FOR FABRICATION: REVISED AND RESUBMIT WITH NO CHANGES WITH CHANGES AS NOTED

APPROVED BY: _____ DATE: _____

WEBSITE: www.halton.com

MAIL APPROVED DRAWINGS TO APPROPRIATE FACTORY BELOW:

HALTON CO. (USA)	DATE: 11.09.20
101 INDUSTRIAL DRIVE	BY: NC
SCOTTSVILLE, KY 42164	NC
1-270-237-8800	SKM
	DATE: 02.26.21

REVISION DESCRIPTION

NO CHANGE	REMOVED ROOF CURB
REVISED ROOF CURB	
REMOVED DUST FILTER AND GRAVITY DAMPER SECTIONS	

PROJECT: SHAKE SHACK OAK LAWN, IL

LOCATION: OAK LAWN, IL

DRAWN BY: NC DATE: 10.21.20

SCALE: NTS

CONSULTANT:

DRAWING TITLE: MUA-DG 2800

DRAWING No.: U20-808

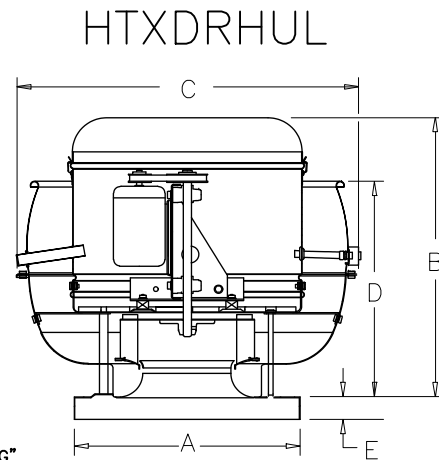
REV. NO.: 3 SHEET NO.: 3 of 4

Halton

FAN INFORMATION TABLE

FAN NO	MODEL	QTY	CFM	S.P.	H.P.	VOLTAGE	AMPS	ACCESSORIES
EF-1	HSTXDRHUL1575SC HOOD #1-1	1	1657	0.8"	3/4	115/1/60	13.8	MOUNT & WIRE DISCONNECT, SPD CNTRL, SQ GALV SF CURB, LABEL UL/CUL 762, GREASE CONTAINER, HINGE KIT
EF-2	HSTXDRHUL1575SC HOOD #1-2	1	1772	0.85"	3/4	115/1/60	13.8	MOUNT & WIRE DISCONNECT, SPD CNTRL, SQ GALV SF CURB, LABEL UL/CUL 762, GREASE CONTAINER, HINGE KIT

NOTE:
ELECTRICAL CONNECTIONS
TO BE MADE ON HINGE
SIDE OF FAN.



DAMPER OD = "F"
ROOF OPENING = "G"
CURB OD = "H"

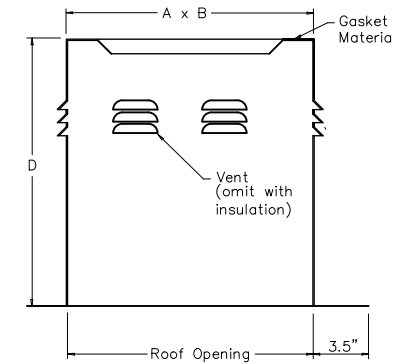
TAG	SIZE	A	B	C	D	E	F	G	H	J	SHIP'G WT.-LESS MOTOR
EF-1	15	24"	27.63"	36.5"	22.63"	2"	18"	19.5"	22.5"	19.5"	140
EF-2	15	24"	27.63"	36.5"	22.63"	2"	18"	19.5"	22.5"	19.5"	140

NOTE:
ON ROOF UNITS, ANCHOR
THE FAN SECURELY TO
THE CURB. ANCHORING
THROUGH THE VERTICAL
PORTION OF THE CURB
CAP FLANGE IS
RECOMMENDED. USE A
MINIMUM OF FOUR LAG
BOLTS OR OTHER
SUITABLE FASTENERS.

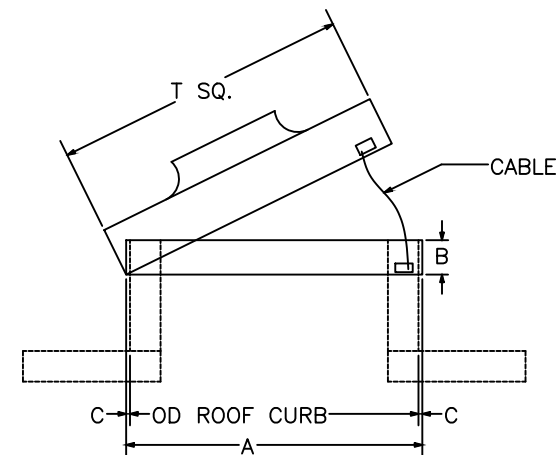
CURB CURB TYPE: GSFRC

OPTIONS: (as noted below)

- 1) 4 VENTS
- 2) NO DAMPER SHELF



TAG	QTY	DESCRIPTION	MATERIAL GAUGE	A	B	C	D	ROOF OPENING	OPTIONS
EF-1	1	GSFRC 22.5	18	22.5"	22.5"	1.5"	30"	19.5" x 19.5"	1,2
EF-2	1	GSFRC 22.5	18	22.5"	22.5"	1.5"	30"	19.5" x 19.5"	1,2



THIS DRAWING MUST BE CHECKED, SIGNED AND RETURNED TO THE APPROPRIATE FACTORY.
PLEASE VERIFY THE FOLLOWING:
1. ALL DIMENSIONAL INFORMATION, MOUNTING POSITIONS
2. THE LOCATION AND TYPE OF COOKING EQUIPMENT.
NOTE TO APPROVER
ANY CHANGES IN COOKING EQUIPMENT SUCH AS INCREASED ENERGY INPUTS OR EQUIPMENT
POSITION MAY AFFECT EXHAUST AIRFLOW. HALTON MUST BE NOTIFIED IF ANY OF THESE
CHANGES OCCUR. A RECALCULATION EXHAUST AIRFLOW MAY BE REQUIRED.
 REVISE AND RESUBMIT
 APPROVED FOR FABRICATION
 WITH NO CHANGES
 WITH CHANGES AS NOTED
APPROVED BY _____ DATE _____

MAIL APPROVED DRAWINGS TO APPROPRIATE FACTORY BELOW: WEBSITE: WWW.HALTONCOMPANY.COM

REV.	NO CHANGE	DESCRIPTION	BY	DATE
1	NO CHANGE	REVISION DESCRIPTION	NC	11.09.20
2	UPDATED FAN INFO AND DETAILS		NC	11.24.20
3	CORRECTED AMPS		SKM	02.26.21
4				
5				
6				
7				

PROJECT: SHAKE SHACK OAK LAWN, IL
DRAWING TITLE: FAN DETAILS
DRAWING No.: U20-808
REV. NO.: 3 SHEET NO.: 4 of 4

HALTON CO. (CANADA)
1021 BREVK PLACE
MISSISSAUGA, ON L4W 3R7
1-905-624-0301

HALTON CO. (USA)
101 INDUSTRIAL DRIVE
SCOTTSDALE, KY 42164
1-270-237-5600

Halton