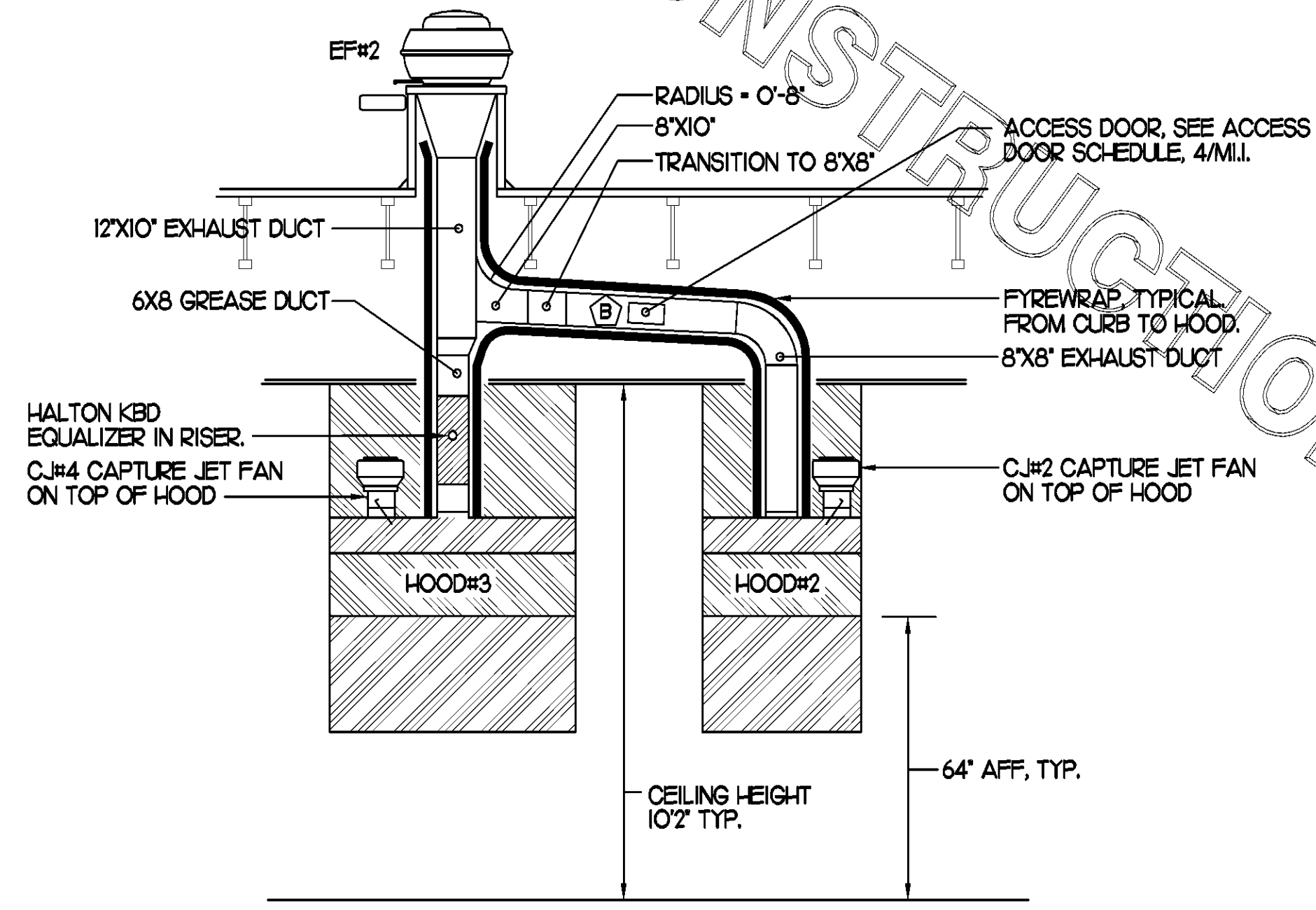


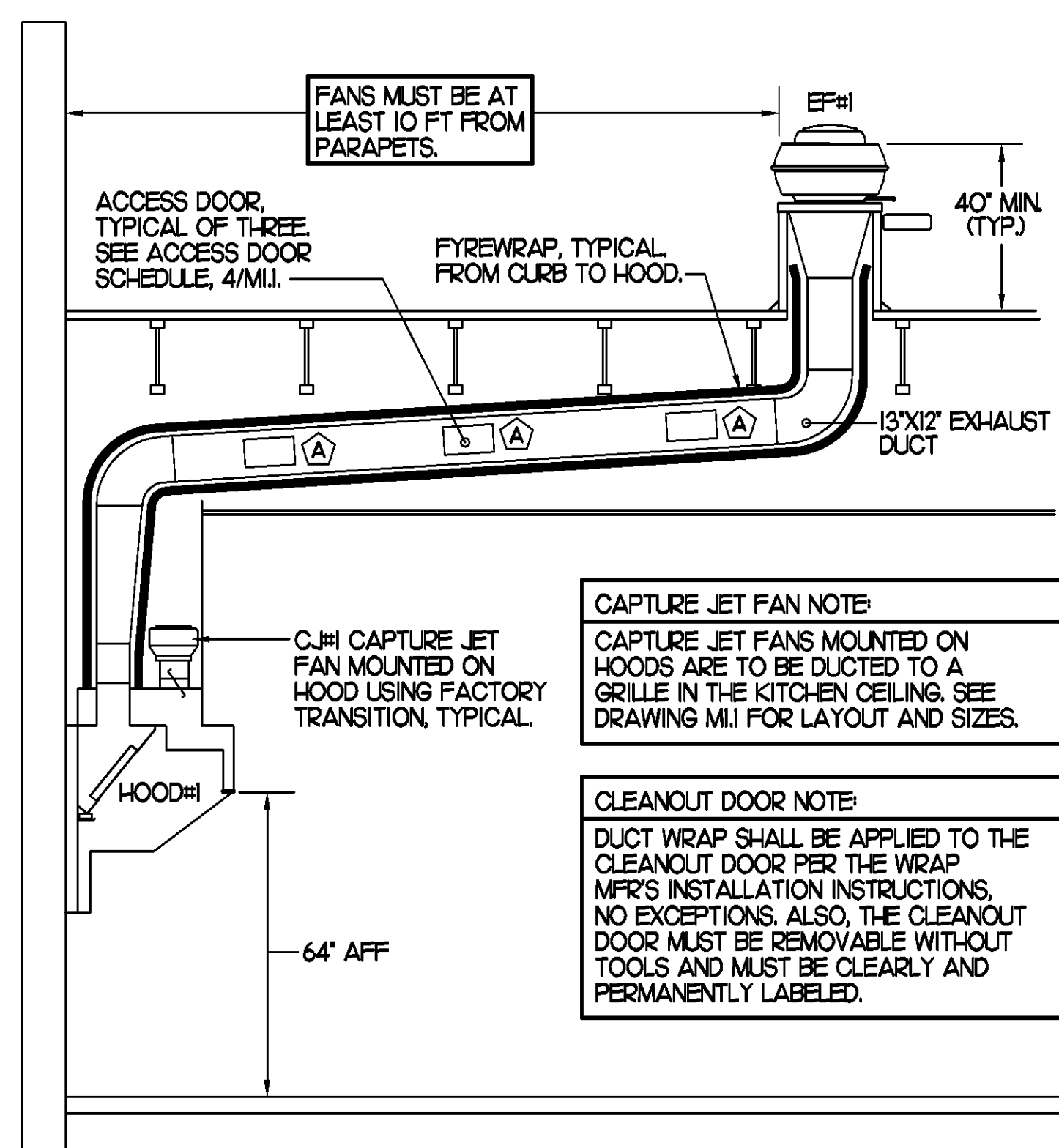
6 KITCHEN HOOD SYSTEMS NOTES

- CHICK-FIL-A MAINTAINS A NATIONAL ACCOUNT WITH HALTON CO. FOR THE HOODS. CHICK-FIL-A WILL PURCHASE AND PROVIDE THE HOODS FOR INSTALLATION BY THE MECHANICAL CONTRACTOR. THE MECHANICAL CONTRACTOR SHALL BE RESPONSIBLE FOR RECEIVING THE HOODS. CONTACT HALTON CO. AT 270-237-5600 FOR MORE INFO.
- THE FIRE SUPPRESSION SYSTEM SHALL CONSIST OF A COMPLETE WET ANSUL SYSTEM FURNISHED BY HALTON. THE HOOD SHALL BE FURNISHED PRE-PIPED BY HALTON.
- THE R-102 ANSUL FIRE SUPPRESSION SYSTEM EXTERNAL TO THE HOODS SHALL BE INSTALLED IN ACCORDANCE WITH HOOD MANUFACTURER'S SHOP DRAWINGS BY AN AUTHORIZED ANSUL SYSTEM INSTALLER HIRED BY HALTON.
- HOOD EXHAUST DUCTWORK SHALL BE 16 GA. BLACK STEEL WITH CONTINUOUS LIQUID TIGHT WELD OF JOINTS & SEAMS.
- TURNS IN GREASE EXHAUST DUCTWORK SHALL BE LONG RADIUS TYPE, WITH A CENTERLINE RADIUS R-3W/2, NO EXCEPTIONS ALLOWED. NO MITERED FITTINGS ALLOWED.
- ALL STAINLESS STEEL CLOSURE PANELS SHALL BE SUPPLIED BY HOOD MANUFACTURER AND INSTALLED BY THE MECHANICAL CONTRACTOR ACCORDING TO MANUFACTURER'S RECOMMENDATIONS.
- SLOPE ALL GREASE EXHAUST DUCT BACK TO HOOD AT 1/4" PER FOOT OF RUN.
- WRAP NEW GREASE DUCT WITH UNIFRAX FYREWAP. ACCESS DOORS SHALL BE INSTALLED ACCORDING TO MANUFACTURER'S INSTALLATION RECOMMENDATIONS. FYREWAP PRODUCT USED SHALL MEET LOCAL CODE REQUIREMENTS.
- SUPPORT HOODS WITH THREADED ROD AT EACH FACTORY SUPPORT POINT. EACH SUPPORT POINT MUST SUPPORT THE HOOD WEIGHT EQUALLY. ATTACH TO STRUCTURE AS DETAILED ON STRUCTURAL DRAWING 55-1.

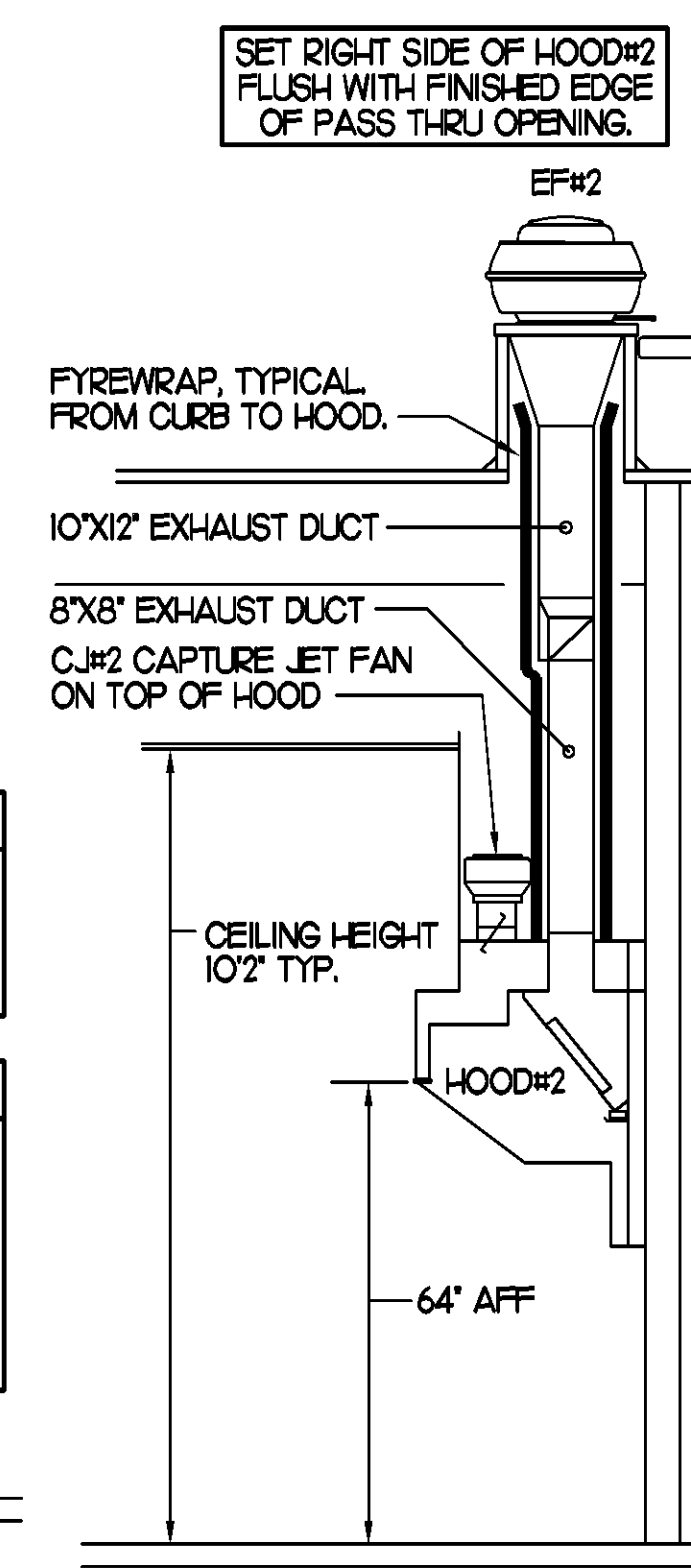


4 HOOD ELEVATION SECTION "D-D"

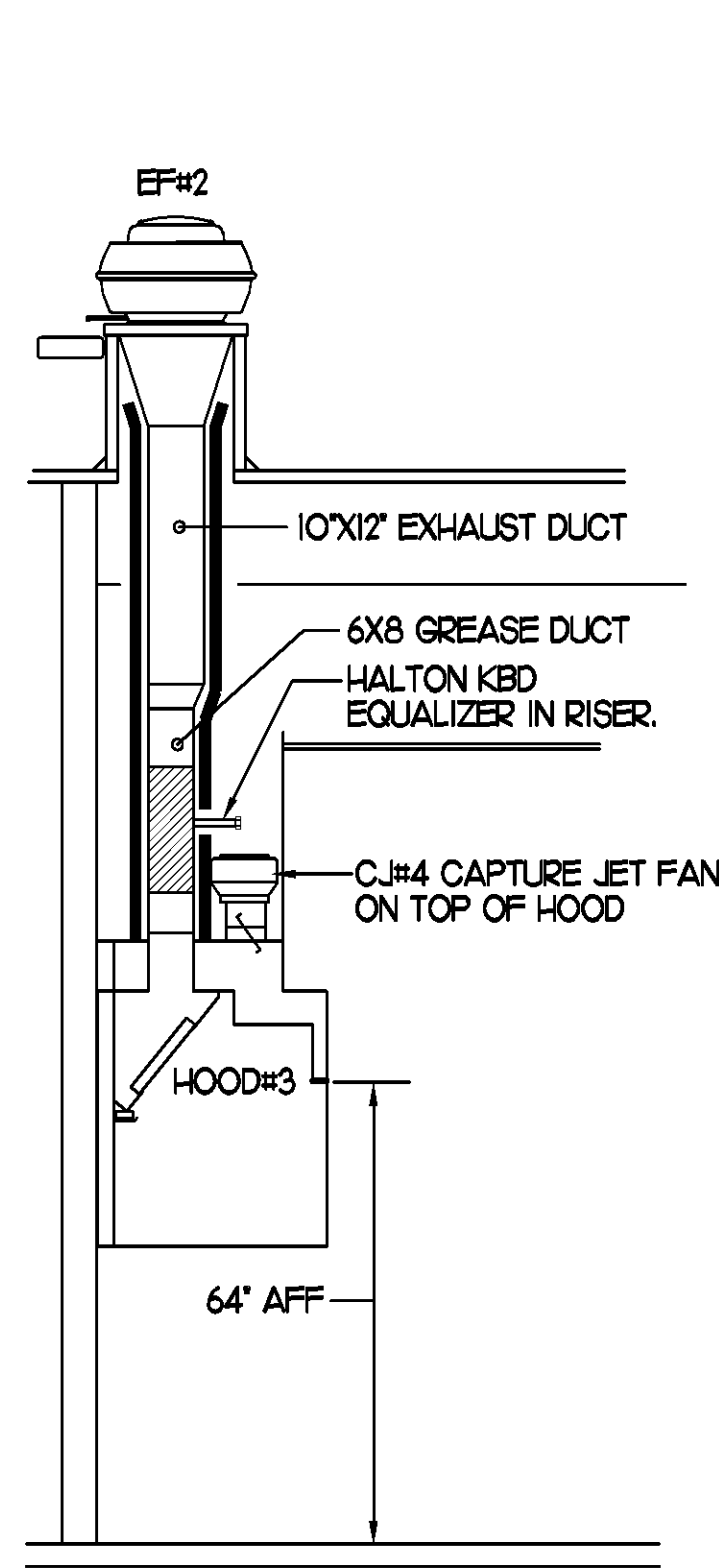
NONE



SECTION "A-A"



SECTION "B-B"



SECTION "C-C"

3 HOOD ELEVATIONS

NONE

5 HOOD SCHEDULE

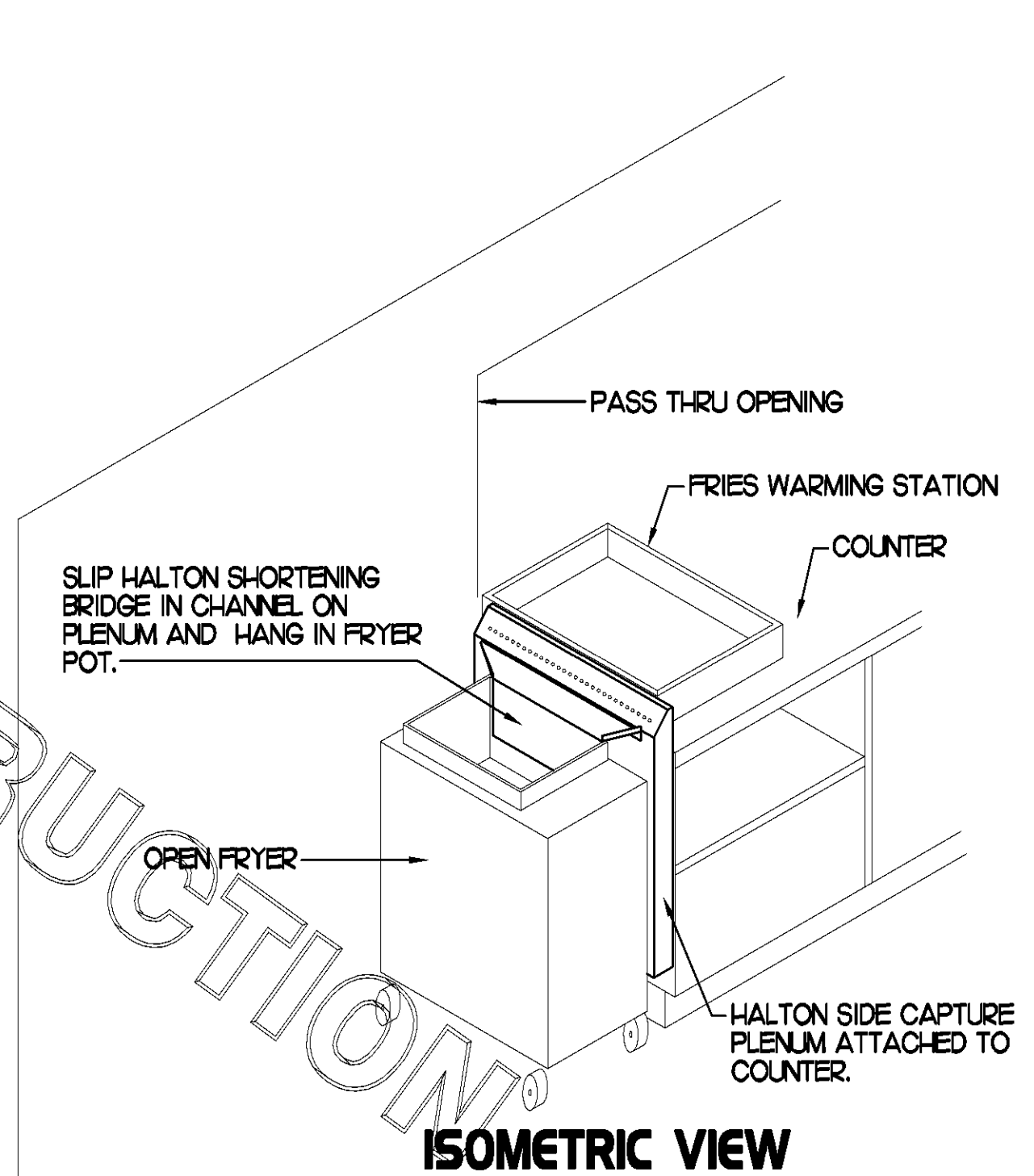
MARK	EXHAUST CFM	SP * TAB PORT	CAPTURE JET CFM & SP.	TYPE	COLLAR SIZE	WIDTH	DEPTH	HEIGHT	MANUFACTURER	MODEL	REMARKS
HOOD#1	1,700	0.20"	100 * 0.30"	BACK SHELF	9X17	136.5"	34"	48"	HALTON	KVL	1,2,3,4,5,6,7,9,10,15
HOOD#2	700	0.27"	30 * 0.30"	BACK SHELF	8X8"	40"	34"	48"	HALTON	KVL	1,2,4,5,8,10,11,14
HOOD#3	520	0.07"	30 * 0.30"	BACK SHELF	8X8"	62"	34"	48"	HALTON	KVL	1,2,4,5,10,12,13,14,15

NOTES: DIMENSIONS OF HOODS INCLUDE BACK AND SIDE SPACERS (HEIGHT DOES NOT INCLUDE CLOSURE PANELS).

REMARKS:

- 1) STAINLESS STEEL CONSTRUCTION.
- 2) PROVIDE FULL HEIGHT SS CLOSURE PANEL WITH ACCESS PANEL IN FRONT LARGE ENOUGH TO REMOVE CAPTURE JET FAN.
- 3) PROVIDE FULL HEIGHT SS CLOSURE PANEL WITH ACCESS PANEL IN FRONT LARGE ENOUGH TO SERVICE ANSUL COMPONENTS.
- 4) PROVIDE PRE-PIPED ANSUL R-102 WET FIRE EXTINGUISHING SYSTEM.
- 5) PROVIDE 3" BACK SPACER.
- 6) PROVIDE 3" RIGHT SIDE SPACER.
- 7) PROVIDE NOTCHED LEFT END SIDE PANEL.
- 8) PROVIDE NOTCHED RIGHT END SIDE PANEL.
- 9) ANSUL CABINET AND COMPONENTS ON LEFT SIDE ABOVE HOOD.
- 10) PROVIDE TOP PLENUM CAPTURE JET FAN, SPEED CONTROLLER AND COLLAR.
- 11) PROVIDE COUNTER MOUNTED SIDE CAPTURE JET PLENUM ASSEMBLY AND FAN ON RIGHT SIDE OF HOOD.
- 12) PROVIDE HALTON KBD EQUALIZER WITH FACTORY INSTALLED 8X6 TRANSITIONS ON LEAVING CONNECTION FLANGE.
- 13) PROVIDE ACCESS PANEL IN FRONT LARGE ENOUGH TO ACCESS KBD EQUALIZER JACK SCREW.
- 14) PROVIDE FULL LEFT END PANEL EXTENDING BELOW TOP OF COOKING SURFACE.
- 15) PROVIDE FULL RIGHT END PANEL EXTENDING BELOW TOP OF COOKING SURFACE.

ANSUL REMOTE PULL STATION, J-BOX AND CONDUIT ARE BY ELECTRICAL. PROVIDE RED BAKELITE LABEL WITH 1/2" HIGH LETTERS INDICATING THE HOODS SERVED.



ISOMETRIC VIEW

SEE HALTON SHOP DRAWINGS FOR DETAILED INSTALLATION INSTRUCTIONS.

SLIP HALTON SHORTENING BRIDGE IN CHANNEL ON PLENUM AND HANG IN FRYER POT.

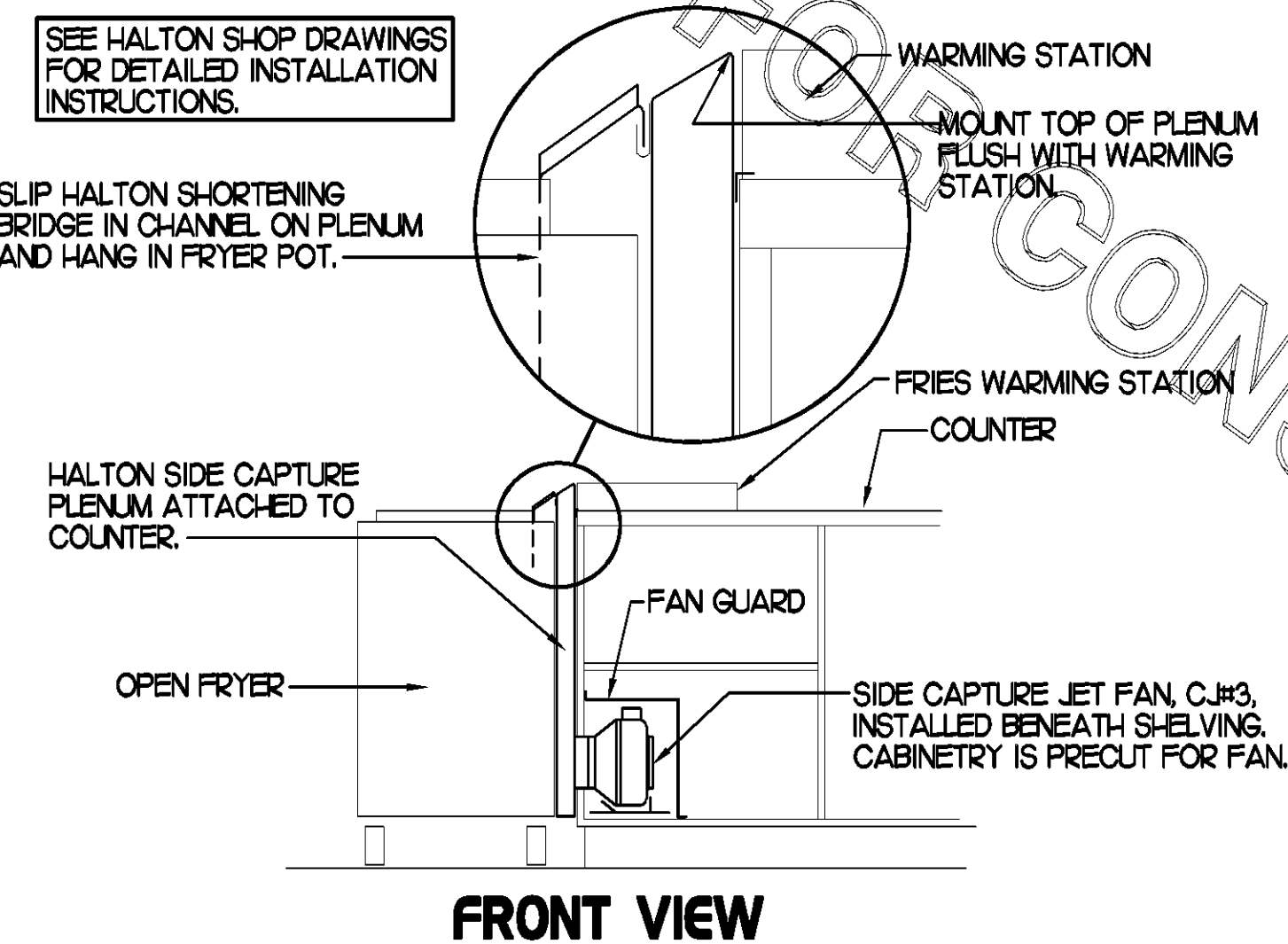
HALTON SIDE CAPTURE PLENUM ATTACHED TO COUNTER.

OPEN FRYER

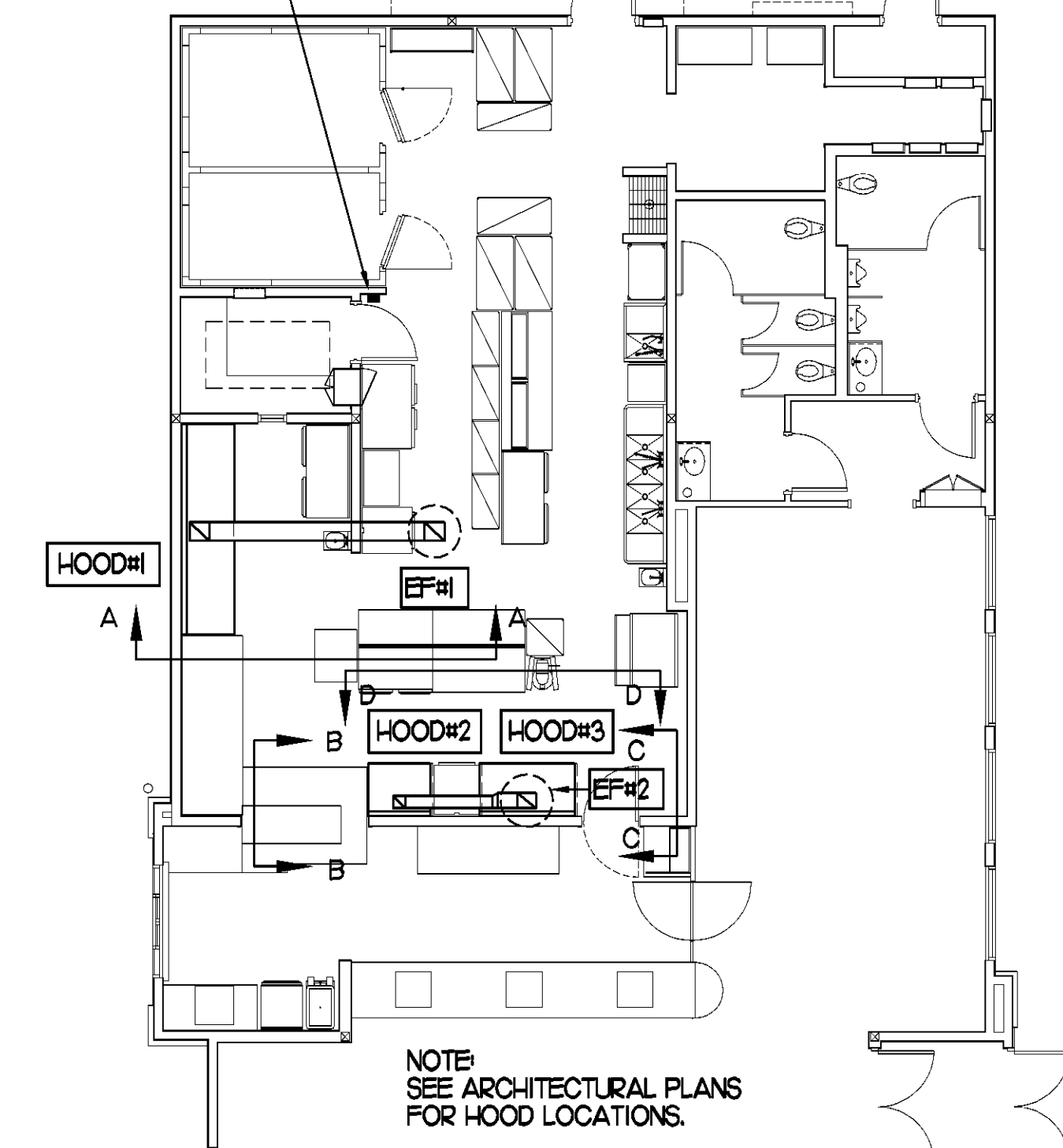
HALTON SIDE CAPTURE PLENUM ATTACHED TO COUNTER.

2 HALTON SIDE CAPTURE JET PLENUM

NOT TO SCALE

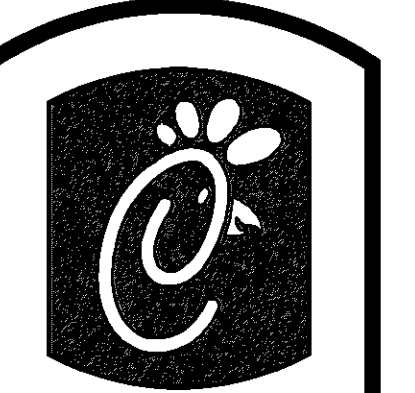


FRONT VIEW



1 HOOD LAYOUT

1/8"=1'-0"



Chick-fil-A

5200 Buffington Rd.
Atlanta Georgia,
30349-2998

Revisions:

Mark Date By

△

Mark Date By

△

Mark Date By

△

Seal

4021
933 LEE ROAD, FIRST FLOOR
ORLANDO, FLORIDA 32810
PH 407.645.5008
FX 407.629.9124

DAVID BOYCE
ARCHITECTURE
ENGINEERING
INTERIOR DESIGN
PROJECT MANAGEMENT

STORE
McCALLA FSU
FSU S06-C

1-459 @ EASTERN
VALLEY ROAD
BESSEMER,
ALABAMA 35022

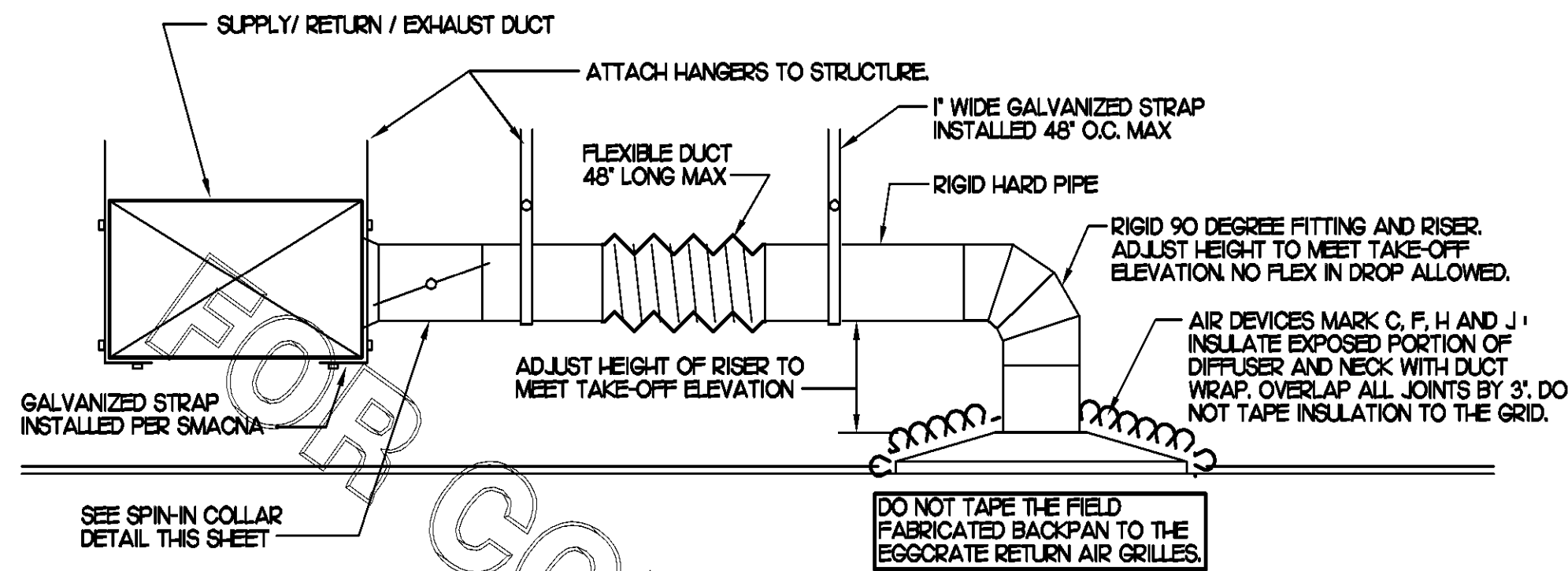
SHEET TITLE
HOOD DETAILS
& SCHEDULES

DWG EDITION 07.1
REVISION

Job No. : 2008.0153
Store : 2228
Date : 05/07/08
Drawn By :
Checked By:

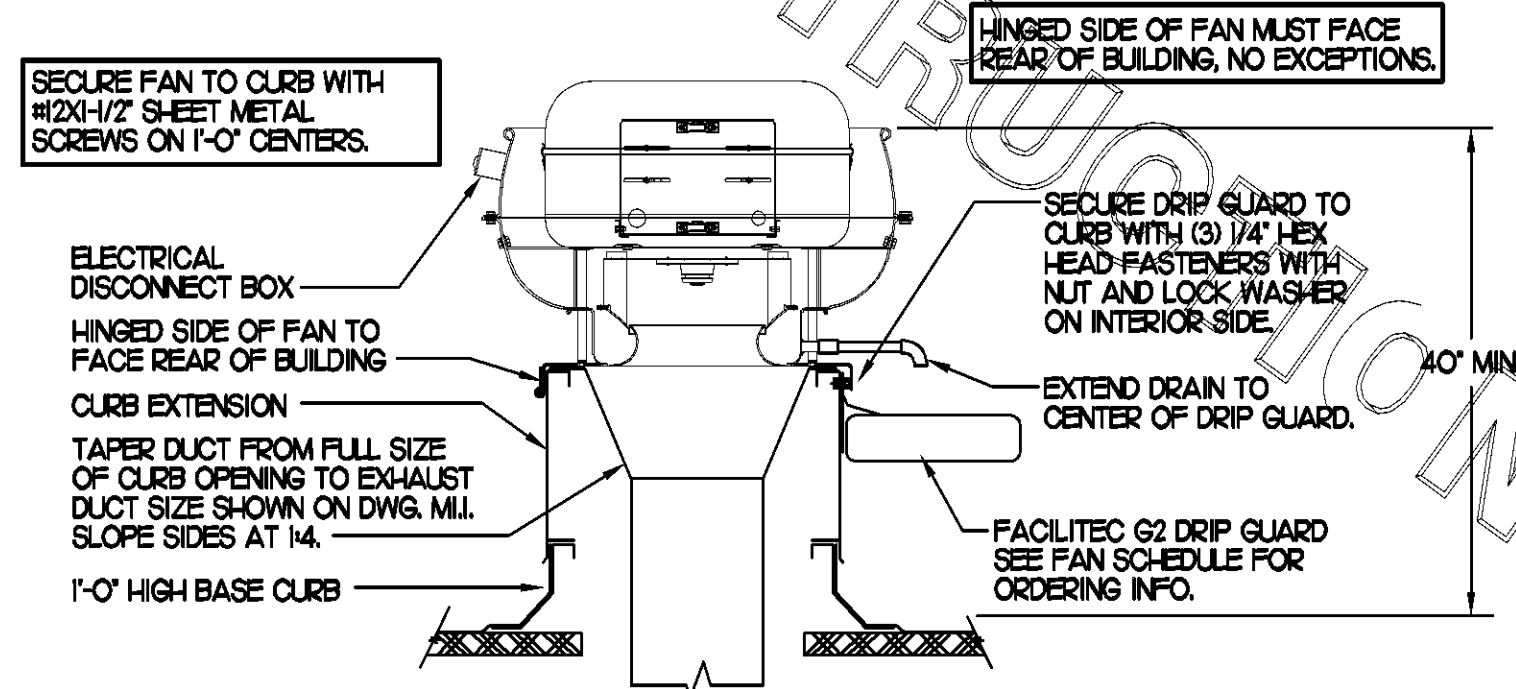
Sheet

M-2.I



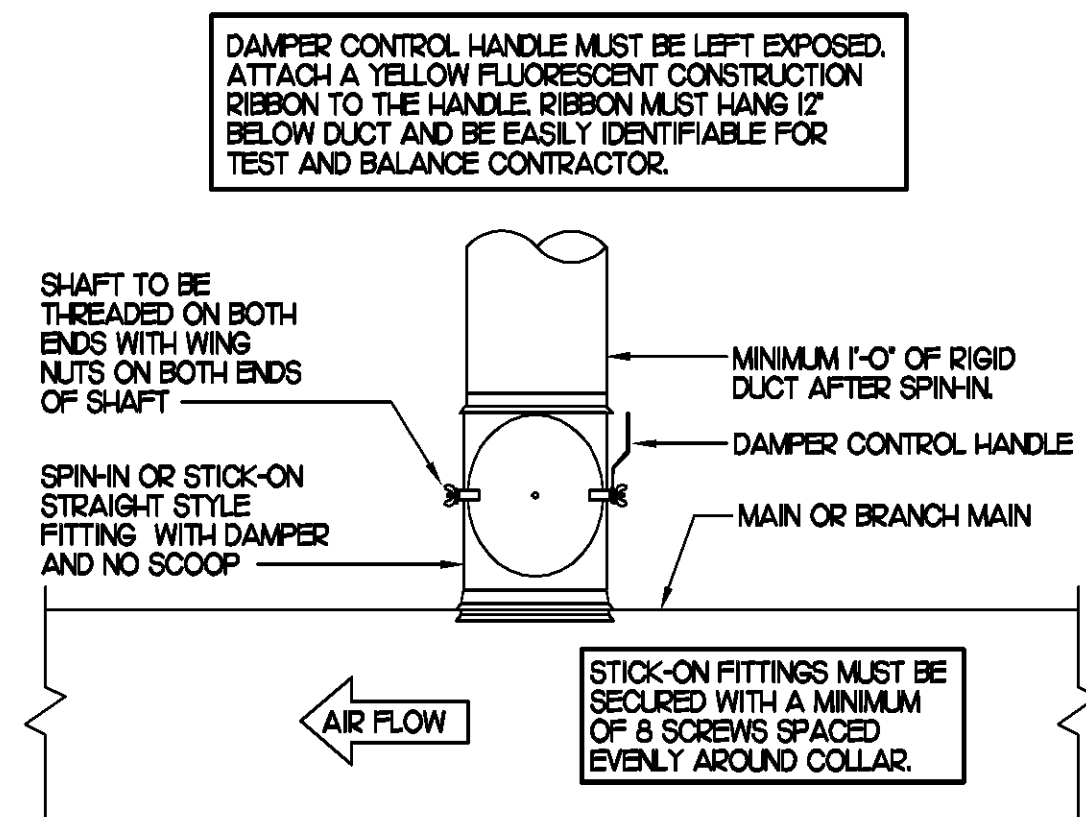
1 SAG/RAG/GRILLE TAKE-OFF

NO SCALE



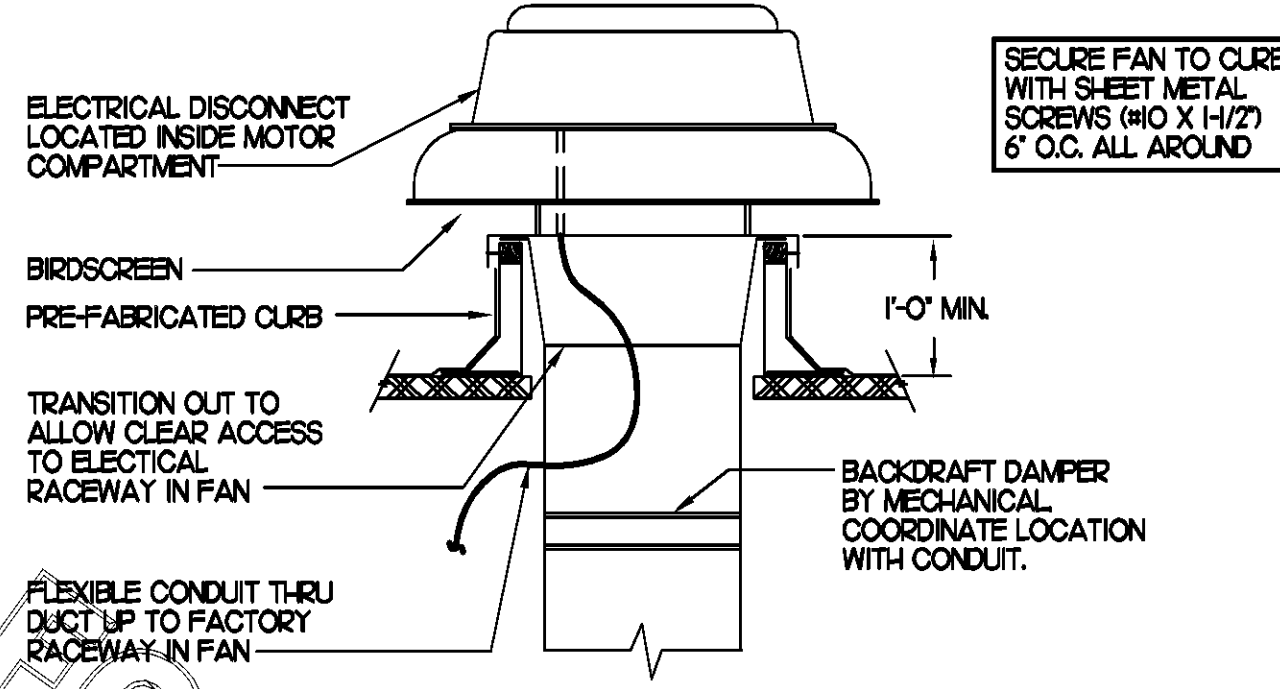
3 KITCHEN HOOD EXHAUST FAN

NO SCALE



2 SPIN-IN COLLAR

NO SCALE



4 RESTROOM EXHAUST FAN

NO SCALE

MARK	GAS FIRED ROOFTOP UNIT SCHEDULE										REMARKS
	COOLING CAPACITY (MEH)		HEATING CAPACITY (MEH)		FAN SECTION (CFM)			MODEL	MANUFACTURER		
	TOTAL	SENS	INPUT	OUTPUT	SUPPLY	O.A.	HP	ESP			
ACH	1881	1364	4800	3840	5150	1650	5	.70	LG6BCH2	LENNOX	1,3,5,6,8,9,10,11,2,3
ACH2	1059	762	2400	1920	2830	750	2	.65	LG6A2H2	LENNOX	2,3,5,6,8,9,10,11,2,4
ACH3	1280	909	2400	1920	4000	1000	3	.65	LG6A2H2	LENNOX	1,3,5,7,8,9,10,11,2,4
ACH4	938	675	2400	1920	2765	600	2	.65	LG6A2H2	LENNOX	2,3,5,6,8,9,10,11,2,4
ACH5	639	473	1250	1000	1800	300	1.5	.65	LG6A6GH2	LENNOX	3,4,5,7,8,9,10,11,2,4

NOTES:
 * COOLING CAPACITIES ARE GROSS, BASED ON INDOOR 80°FDB/57°FWB, OUTDOOR 95°FDB, AND 400 CFM PER TON.
 * CHICK-FIL-A MAINTAINS A NATIONAL ACCOUNT FOR EQUIPMENT WITH LENNOX CORPORATION. CONTACT LENNOX NATIONAL ACCOUNTS AT 972-497-6260 (OR BY FAX AT 972-497-5112) FOR PRICING, ORDERING AND AVAILABILITY.

REMARKS:
 1) PROVIDE DIFFERENTIAL ENTHALPY ECONOMIZER WITH POWER EXHAUST.
 2) PROVIDE DIFFERENTIAL ENTHALPY ECONOMIZER WITH BAROMETRIC EXHAUST.
 3) PROVIDE 14" HIGH ROOF CURB.
 4) PROVIDE O-HOOK MOTORIZED OUTSIDE AIR DAMPER ASSEMBLY.
 5) SEE DETAIL 21M1 FOR SETTING OF EXTO PARAMETERS BY IMC.
 6) PROVIDE FACTORY INSTALLED AND UNIT POWERED 115V GFI SERVICE OUTLET.
 7) PROVIDE FACTORY INSTALLED 115V GFI SERVICE OUTLET.
 8) PROVIDE FACTORY INSTALLED RETURN SIDE SMOKE DETECTOR.
 9) PROVIDE FACTORY INSTALLED NON-FUSED DISCONNECT.
 10) PROVIDE MERV 7 THROW AWAY FILTERS.
 11) PROVIDE HINGED PANELS FOR FILTER ACCESS, FAN MOTOR ACCESS, COMPRESSOR ACCESS AND CONTROL COMPARTMENT ACCESS.
 12) ADJUST GAS MANIFOLD PRESSURE AT LOCATIONS WHERE ELEVATION EXCEEDS 2000' ABOVE SEA LEVEL, AS RECOMMENDED BY MANUFACTURER.
 13) PROVIDE HUMIDITY CONTROL OPTION WITH FACTORY WALL MOUNTED HUMIDITY SENSOR (STATES OF CA AND AZ EXCLUDED).
 14) NOT USED.

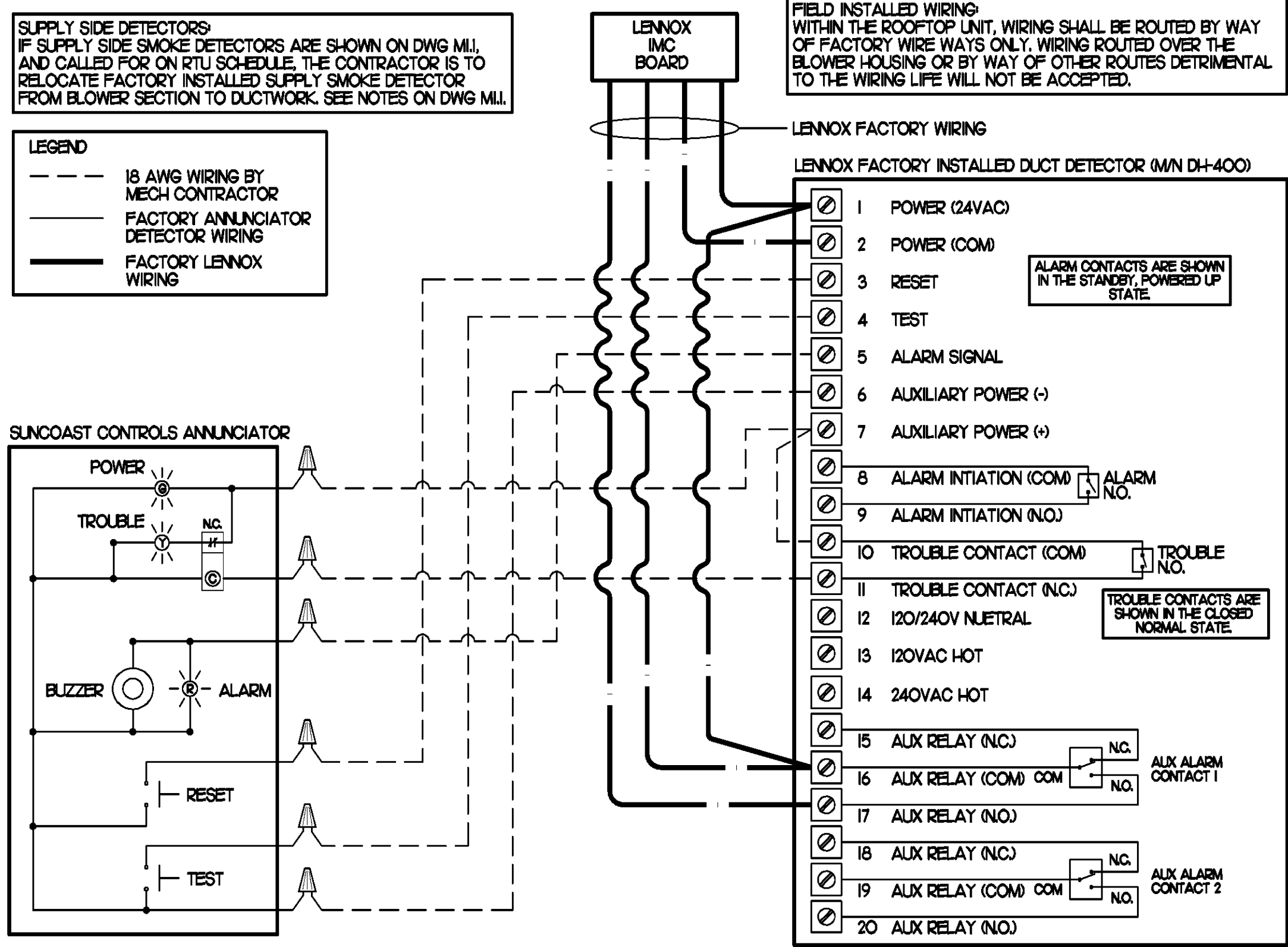
MARK	EXHAUST FAN SCHEDULE										REMARKS
	CFM	ESP	RPM	TIP SPEED (PPM)	HP	AREA SERVED	MODEL	MANUFACTURER			
EF#1	1700	3/4	1633	4641	1/2	HOOB#	IS0V5B	LOREN COOK			1,2,3,4,5,6,12
EF#2	1220	3/4	1586	6228	1/2	HOOB#2 & HOOB#3	IS0V5B	LOREN COOK			1,2,3,4,5,6,12
EF#3	400	3/8	1429	3443	1/8	RESTROOMS	ACED-90C15D#	LOREN COOK			2,7,8,9,10,11,2

NOTES:
 GREASE EXHAUST FAN RPM BASED ON 80 DEGREE F AIR AT 1000 FEET ABOVE SEA LEVEL.

REMARKS:
 1) PROVIDE FACTORY 1'-0" BASE CURB AND EXTENSION.
 2) PROVIDE FACTORY INSTALLED, PRE-WIRED, NEMA 3 NON-FUSED DISCONNECT.
 3) PROVIDE FACTORY INSTALLED HINGED BASE KIT.
 4) PROVIDE FACTORY INSTALLED WIND BAND CLEAN OUT PORT.
 5) PROVIDE FACTORY INSTALLED HELICAL SPRING AUTOMATIC BELT TENSIONER.
 6) PROVIDE AND INSTALL FACILITEC G2 DRIP GUARD. THE MECHANICAL CONTRACTOR IS TO CONTACT FACILITEC AT 800-284-8273 FOR PURCHASING AND SHIPPING ARRANGEMENTS.
 7) PROVIDE BIRDSCREEN.
 8) BACKDRAFT DAMPER IN DUCT BY MECHANICAL CONTRACTOR AS SHOWN ON 4M-31.
 9) STARTER BY ELECTRICAL CONTRACTOR. INTERLOCK WITH LIGHTS BY ELECTRICAL CONTRACTOR.
 10) PROVIDE 1/2" HIGH CURB.
 11) PROVIDE FACTORY INSTALLED AND WIRED SPEED CONTROLLER.
 12) CHICK-FIL-A HAS A NATIONAL ACCOUNT WITH TOM BARRROW COMPANY FOR THE FAN/CURB PACKAGE. THE MECHANICAL CONTRACTOR IS REQUIRED TO PURCHASE THE FAN/CURB PACKAGE DIRECTLY FROM TOM BARRROW COMPANY. CONTACT MR. SCOTT GEORGE AT 404-351-HO10 FOR PRICING AND AVAILABILITY. FANS AND CURBS NOT PURCHASED THRU TOM BARRROW COMPANY WILL NOT BE ACCEPTED.

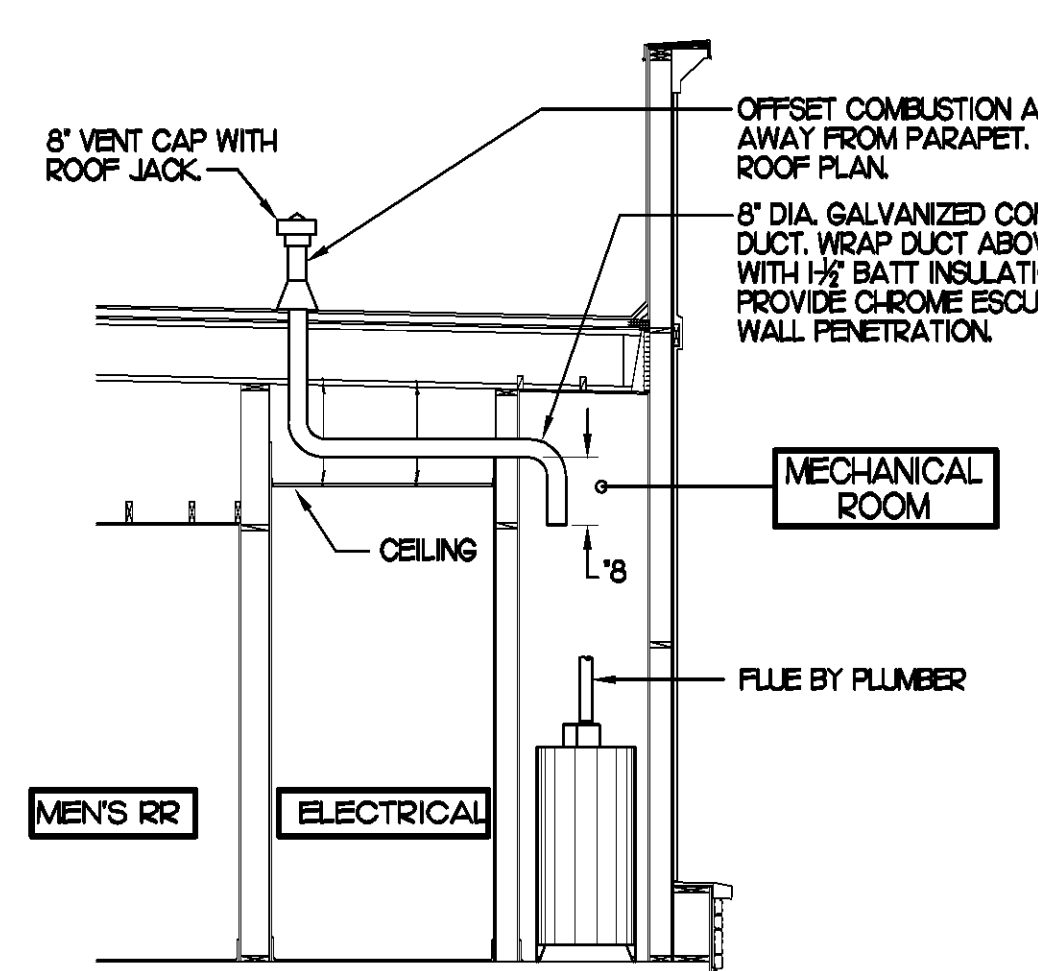
MARK	AIR DEVICE SCHEDULE							REMARKS
	DESCRIPTION	LOCATION	NECK SIZE	FACE SIZE	FRAME TYPE			
A	TITUS MODEL PSS-AA ALUMINUM SUPPLY AIR DIFFUSER WITH AIR PATTERN CONTROLLER.	DINING AREA KITCHEN	SEE PLAN	24X24	LAY-IN	18,9		
B	TITUS MODEL PAR-AA ALUMINUM RETURN AIR GRILLE USED AS A SUPPLY DIFFUSER.	KITCHEN	SEE PLAN	24X24	LAY-IN	18,9		
C	TITUS MODEL MCD STEEL SUPPLY AIR DIFFUSER FIELD ADJUSTABLE AIR PATTERN CONTROLLERS.	ENTRY 'A' ENTRY 'B'	14X14	19X19	SURFACE	15,7,9		
D	TITUS MODEL 272FS DOUBLE DEFLECTION ALUMINUM SIDEWALL SUPPLY GRILLE FRONT BLADE PARALLEL TO SHORT SIDE.	MECHANICAL ROOM MEZZANINE	8X6	10X8	SURFACE	1,9		
E	TITUS MODEL 272FL DOUBLE DEFLECTION ALUMINUM SIDEWALL SUPPLY GRILLE FRONT BLADE PARALLEL TO LONG SIDE.	PLAYGROUND	18X12	20X14	SURFACE	1,9		
F	DONCO MODEL OPDF EGGRATE RETURN AIR GRILLE WITH REMOVABLE WHITE CORE, FACTORY FLAT BACKPAN AND ROUND NECK.	DINING/OFFICE KITCHEN	SEE PLAN	24X24	LAY-IN	1,7,9		
G	TITUS MODEL 56FL ALUMINUM SIDEWALL RETURN GRILLE, FRONT BLADE PARALLEL TO LONG SIDE.	MECHANICAL ROOM	8X6	10X8	SURFACE	1,9		
H	TITUS MODEL TMR-AA ALUMINUM CONCENTRIC ROUND CONE SUPPLY DIFFUSER.	OFFICE	10	18	LAY-IN	1,6,7,9		
J	TITUS MODEL MCD STEEL SUPPLY AIR DIFFUSER FIELD ADJUSTABLE AIR PATTERN CONTROLLERS.	RESTROOMS	10X10	15X15	SURFACE	1,2,3,5,7,9		
K	TITUS MODEL PAR STEEL PERFORATED FACE RETURN AIR GRILLE WITH OBD.	RESTROOMS ENTRY 'A' & 'B'	14X14	15X16	SURFACE	1,4,9		
L	TITUS MODEL 56FL ZERO DEGREE DEFLECTION ALUMINUM SIDEWALL RETURN GRILLE, FRONT BLADE PARALLEL TO LONG SIDE.	PLAYGROUND	16X16	18X18	SURFACE	1,9		
M	TITUS MODEL PAR-AA ALUMINUM RETURN AIR GRILLE.	KITCHEN	6	24X24	LAY-IN	1,9		

REMARKS:
 1) STANDARD OFF WHITE FINISH.
 2) PROVIDE MODEL AG-88 NECK DAMPER.
 3) SEE DRAWINGS IM1 FOR THROW.
 4) PROVIDE MODEL AG-75 NECK DAMPER ON GRILLES IN RESTROOMS.
 5) FIELD FABRICATE 8" DEEP BACKPAN, SEAL JOINTS WITH MASTIC AND INSULATE EXTERNALLY.
 6) PROVIDE AG-75 NECK DAMPER, ADJUSTABLE THRU DIFFUSER FACE.
 7) FIELD INSULATE BACKPAN AS SHOWN ON DETAIL IM-31.
 8) FACTORY INSULATED R-6 BACKPAN.
 9) CHICK-FIL-A HAS A NATIONAL ACCOUNT WITH TOM BARRROW COMPANY FOR THE AIR DEVICES. THE MECHANICAL CONTRACTOR SHALL PURCHASE THE AIR DEVICES DIRECTLY FROM TOM BARRROW COMPANY. CONTACT MR. SCOTT GEORGE AT 404-351-HO10, FOR PRICING AND AVAILABILITY. AIR DEVICES NOT PURCHASED THRU TOM BARRROW COMPANY WILL NOT BE ACCEPTED.



5 SMOKE DETECTOR AND ANNUNCIATOR WIRING DIAGRAM

NO SCALE



6 WATER HEATER VENT/C.A. ROUTING

NO SCALE

MARK	AIR DOOR SCHEDULE										REMARKS
	CFM	VELOCITY	HEATING CAP	HP	AREA SERVED	MODEL	MANUFACTURER				
AD#1	750	3050	72 KW	1/5	DRIVE THRU	MF-30E	POWERED-AIR				1,2,3
AD#2	3384	4000	NA	3/4	REAR DOOR	BCT-1-42	POWERED-AIR				3,4

REMARKS:
 1) FACTORY PROVIDED REMOTE MOUNTED HEAT/ON/AUTO CONTROLS.
 2) FACTORY PROVIDED, UNIT MOUNTED SPEED CONTROLLER.
 3) CHICK-FIL-A HAS A NATIONAL ACCOUNT WITH TOM BARRROW COMPANY FOR THE AIR DOOR. THE MECHANICAL CONTRACTOR SHALL PURCHASE THE AIR DOOR DIRECTLY FROM TOM BARRROW COMPANY. CONTACT MR. SCOTT GEORGE AT 404-351-HO10, FOR PRICING AND AVAILABILITY. AN AIR DOOR NOT PURCHASED THRU TOM BARRROW COMPANY WILL NOT BE ACCEPTED.

5200 Buffington Rd.
 Atlanta Georgia,
 30349-2998

Revisions:
 Mark Date By
 07-15-08
 HEALTH DEPT. COMMENTS

Mark Date By
 Mark Date By
 Seal

4021
 933 LEE ROAD, FIRST FLOOR
 GRANDDOD FLOOR, 2ND FLOOR
 PH 407.645.5008
 FX 407.629.9124

DAVID BOYCE
 ARCHITECTURE
 ENGINEERING
 INTERIOR DESIGN
 PROJECT MANAGEMENT

STORE
 McCALLA FSU
 FSU S06-C

1-459 @ EASTERN
 VALLEY ROAD
 BESSEMER,
 ALABAMA 35022

SHEET TITLE
 HVAC DETAILS
 & SCHEDULES

DWG EDITION 07.1
 REVISION

Job No. : 2008.0153
 Store : 2228
 Date : 05/07/08
 Drawn By :
 Checked By :
 Sheet

M-31

