

NO.	REVISIONS	DATE
1	REVISIONS 1	09-15-25

CLIENT/LANDLORD ISSUE DATE: 07/08/2025  
 PERMIT ISSUE DATE: 07/11/2025

**NOTES BY SYMBOL**

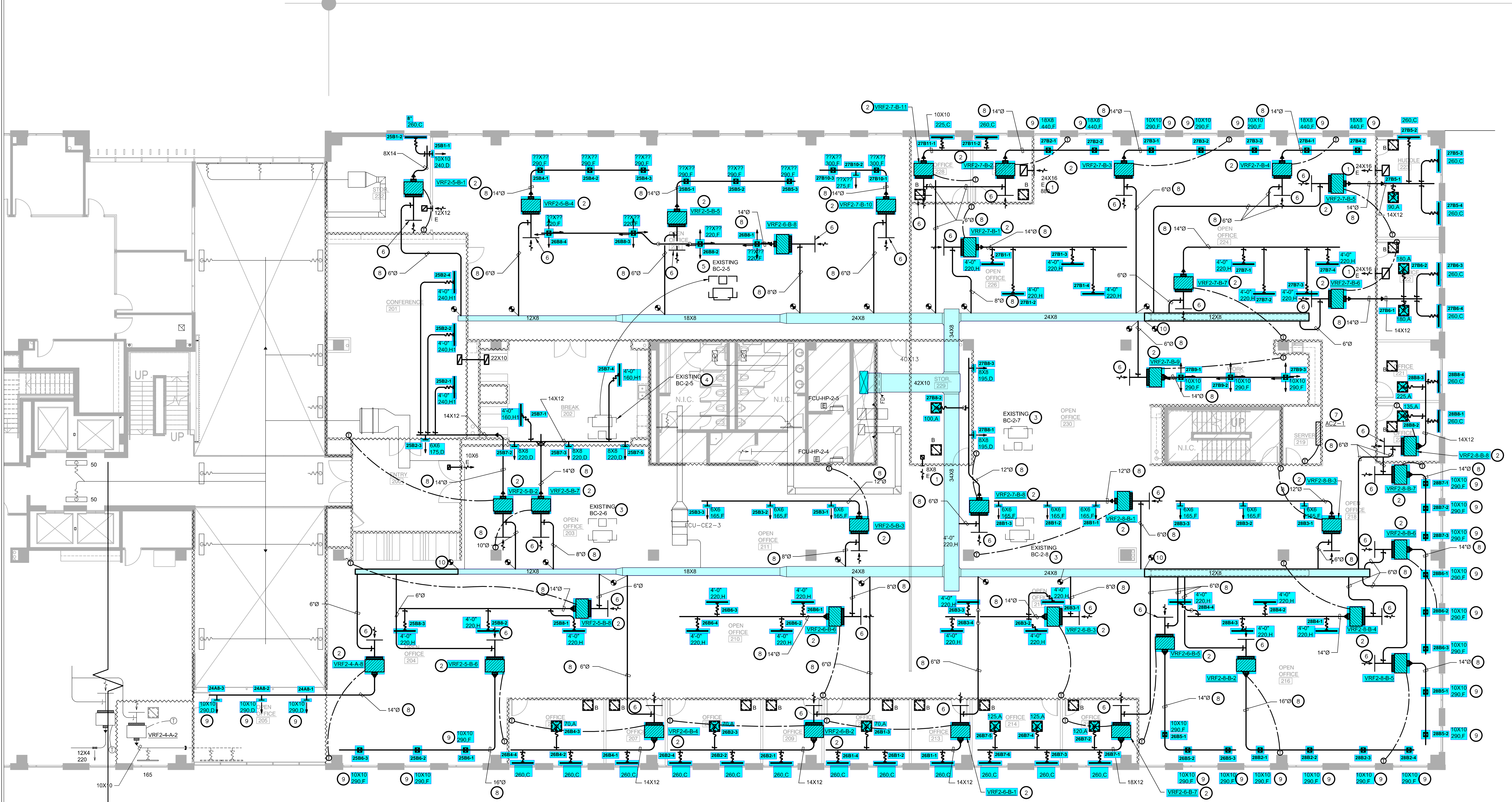
- TRANSFER GRILLE IN WALL TO DECK TO BE MOUNTED HIGH AS POSSIBLE WITH FULL SIZED RETURN AIR BOOT WITH 90 DEGREE ELBOW FACING UPWARD. REFER TO DETAIL SHEET, M2.01 FOR ADDITIONAL INFORMATION.
- VRF TO BE SUSPENDED FROM STRUCTURE. EXTEND FULL SIZED RETURN AIR PLENUM AS INDICATED ON DRAWINGS. PROVIDE MANUAL DAMPER AT OUTSIDE AIR DUCT CONNECTION TO RETURN AIR PLENUM.
- EXISTING BRANCH CONTROLLER SUSPENDED FROM STRUCTURE WITH ISOLATION SPRINGS.
- EXISTING BRANCH CONTROLLER TO BE RELOCATED. SEE SHEET M2.21 FOR ADDITIONAL INFORMATION.
- NEW LOCATION OF EXISTING BRANCH CONTROLLER. SEE SHEET M2.21 FOR ADDITIONAL INFORMATION.
- EXTEND FULL SIZED RETURN PLENUM A MINIMUM OF 5'-0" OR AS FAR AS POSSIBLE FROM FAN COIL UNIT AS SHOWN. PROVIDE WIRE MESH WITH A MINIMUM OF 50% FREE AREA AT RETURN AIR OPENING. CONNECT OUTSIDE AIR DUCT WITH BALANCING DAMPER AS SHOWN ON DETAIL LOCATED ON SHEET M2.01. SIZE SHOWN ON FLOOR PLAN THIS SHEET. REFER TO OUTSIDE AIR TAPS SCHEDULE THIS SHEET FOR CONNECTIONS LARGER THAN 8" AT OUTSIDE AIR SUPPLY DUCT.
- MOUNT AC UNIT ON WALL IN ACCORDANCE WITH MANUFACTURERS RECOMMENDATIONS. COORDINATE EXACT LOCATION AND TEMPERATURE SETPOINT WITH TENANT REPRESENTATIVE AT JOB SITE.
- ALL EXPOSED ROUND DUCTWORK SHALL BE INTERNALLY LINED SPIRAL DUCT WITH MICROBIOLOGICAL TREATMENT AND MOUNTED AT HEIGHT REQUIRED TO MAINTAIN GRILLES AT SAME HEIGHT AS ADJACENT LIGHTING FIXTURES. COORDINATE FINAL HEIGHT WITH ARCHITECTURAL REPRESENTATIVE PRIOR TO ROUGH-IN.
- GRILLE IS INTENDED TO WASH THE PERIMETER GLASS. ADJUST ANGLE OF GRILLES AND LOUVERS ACCORDINGLY.
- REPLACE EXISTING DUCT AND RELATED TRANSITION WITH NEW DUCT SAME SIZE AND MATERIALS TO MATCH REMAINING EXISTING DUCT.

**RETURN AIR NOTES:**

- WALLS TO DECK INDICATED ON THESE DRAWINGS ARE BASED ON OUR UNDERSTANDING OF ARCHITECTURAL PLANS. COORDINATE ALL WALLS TO DECK WITH ARCHITECT AND INFORM THE ARCHITECT OF ANY DIFFERENCES WITH THIS PLAN PRIOR TO BIDDING. ANY ADDITIONAL BOOTS REQUIRED SHALL BE SIZED AT 500 FPM.
- ALL CUTTING AND CHANNELING OF EXISTING BUILDING SHALL BE ACCOMPLISHED IN A NEAT AND WORKMANLIKE MANNER WITHOUT REMOVAL OF EXCESS MATERIALS. THIS CONTRACTOR SHALL PATCH AND REPLACE WITH MATERIAL SIMILAR TO ADJACENT CONSTRUCTION. ALL BOOTS SHALL BE SEALED AT THE WALL PENETRATION.
- ALL WORK MUST BE COORDINATED AND SCHEDULED WITH THE OWNER AND OCCUPANTS OF THIS BUILDING SO AS TO PROVIDE THE LEAST AMOUNT OF DISRUPTION OF THE NORMAL BUILDING ACTIVITIES AS POSSIBLE. MAINTAIN CONDITIONED SPACE FOR ALL OWNER OCCUPIED AREAS DURING CONSTRUCTION.
- RETURN AIR BOOTS SHOWN ON DRAWINGS SHALL BE 1" INSULATED SHEET METAL BOOTS. CONTRACTOR SHALL PROVIDE PRICING FOR DUCT BOARD IN LIEU OF SHEET METAL BOOTS.

OUTSIDE AIR TAPS:  
 PROVIDE SQUARE TO ROUND TRANSITIONS AT EXISTING OUTSIDE AIR SUPPLY DUCT AS FOLLOWS:  
 6"X4" SQUARE TO 12".  
 8"X6" SQUARE TO 10".  
 6"X12" SQUARE TO 6".

REFER TO SHEET M2.01 FOR GENERAL NOTES, SCHEDULES AND SYMBOLS.



**1 LEVEL 2 MECHANICAL PLAN**  
 SCALE: 1/8"=1'-0"

SUITE 200  
 VUSIONGROUP

