

SECTION 15732 - PACKAGED ROOFTOP AIR-CONDITIONING UNITS  
PART 1 - GENERAL  
1.1 SECTION REQUIREMENTS  
A. Submittals: Product Data and Shop Drawings.  
B. Comply with ASHRAE 15.  
C. EER: Equal to or greater than prescribed by ASHRAE 90.1, "Energy Efficient Design of New Building, except Low Rise Residential Buildings."  
D. Warranties: Submit a written warranty, signed by the manufacturer, agreeing to the repair or replacement of components that fail within 5 years of Substantial Completion.

PART 2 - PRODUCTS  
2.1 PACKAGED UNITS, 5 TO 20 TONS  
A. Factory assembled and tested, consisting of compressors, condensers, evaporator coils, condenser and evaporator fans, refrigeration and temperature controls, filters, and dampers.  
1. Refer to Rooftop Heating/Cooling Unit Schedule on drawing M200 for capacities, and manufacturers.  
2. Evaporator Fans: Belt driven, forward curved centrifugal.  
3. Exhaust/Relief Fans: Direct drive, forward curved centrifugal or propeller.  
4. Condenser Fans: Direct drive propeller.  
5. Refrigerant Coils: Aluminum fins and copper coil.  
6. Compressors: Serviceable hermetic or fully hermetic, with safety controls, hot gas bypass, and timed off controls.  
7. Heat Exchangers: Gas fired, with gas controls, electronic ignition, high limit cutout, and forced draft proving switch.  
8. Economizer controls (Low-Leak Comparative Enthalpy, 100% capacity).  
9. Low ambient controls.  
10. Smoke Detectors: Photoelectric.  
11. Operating Controls: Two stage heating and two stage cooling on units 8-1/2 tons and over.  
12. Roof curb.  
13. Control Wiring from T-stat to rooftop unit: Shall be 18ga / 7 conductor, rated for plenum applications.  
14. Control Wiring from T-stat to remote sensor: Shall be a separate 18ga / 2 conductor shielded, rated for plenum applications.

PART 3 - EXECUTION  
3.1 INSTALLATION  
A. Install units level and plumb and firmly anchored.  
B. Connect gas piping to burner with pipe same size as gas train inlet, and provide union with sufficient clearance for burner removal and service.  
C. Connect to supply and return hydronic piping with shutoff valve and union or flange at each connection.  
D. Install ducts to termination in roof mounting frames. Terminate return air duct through roof structure.  
E. Connect units to wiring systems and to ground.

END OF SECTION 15732

SECTION 15810 - DUCTS AND ACCESSORIES  
PART 1 - GENERAL  
1.1 SECTION REQUIREMENTS  
A. Submittals: Product Data for fire and smoke dampers.  
B. Comply with NFPA 90A for systems serving spaces more than 25,000 cu. ft. in volume or building Types II, IV, and V construction more than 3 stories in height.  
C. Comply with NFPA 90B for systems serving spaces in 1 or 2 family dwellings or serving spaces less than 25,000 cu. ft..  
D. Comply with NFPA 96, "Ventilation Control and Fire Protection of Commercial Cooking Operations," for kitchen hood ducts.  
E. Comply with UL 181 and UL 181A for ducts and closures.  
F. Testing, Adjusting, and Balancing Agency Qualifications: AABC certified (to be furnished by Tenant).

PART 2 - PRODUCTS  
2.1 DUCTS  
A. Spiral Duct: Spiral Lock Seam, without insulation, G90 galvanized finish, ASTM A-653/924  
1. Basis of Design Manufacturers: Lindab SPIROsafe, alternates to the basis of design must be submitted for review.  
2. Fittings: Factory produced standing seam construction with internal sealing. Fittings with a major axis of 36" or smaller shall be 20 gauge. Fittings with a major axis of 37"-48" shall be 18 gauge.  
B. Galvanized Steel Sheet: Forming steel, ASTM A 653/653M, G90 coating designation.  
C. Duct Liner: ASTM C 1071, Type II, with an airstream surface coated with a temperature resistant coating. Thickness: 1-1/2 inch. R-value : 8.  
1. Adhesive: ASTM C 916, Type I.  
2. Mechanical Fasteners: Galvanized steel pin, length as required to penetrate liner plus a 1/8 inch projection maximum into the airstream.  
D. Joint and Seam Tape: Comply with UL 181A.  
E. Joint and Seam Sealant: Comply with UL 181A.  
F. Rectangular Metal Duct Fabrication: Comply with SMACNA's "HVAC Duct Construction Standard" for metal thickness, reinforcing types and intervals, tie rod applications, and joint types and intervals.

2.2 ACCESSORIES  
A. Volume-Control Dampers: Factory fabricated volume control dampers, complete with required hardware and accessories. Single blade and multiple opposed blade, standard leakage rating, and suitable for horizontal or vertical applications.  
B. Fire Dampers: Factory-fabricated fire dampers, complete with required hardware and accessories. UL labeled according to UL 555, "Fire Dampers".  
C. Flexible Connectors: Flame retardant or noncombustible fabrics, coatings, and adhesives complying with UL 181, Class 1.  
D. Flexible Ducts: Factory fabricated, insulated, round duct, with an outer jacket enclosing 2 inch thick, glass fiber insulation, R-value: 6.0, around a continuous inner liner.

3.1 INSTALLATION  
A. Duct System Pressure Class: Construct and install each duct system with 2 inch positive and negative duct pressure classifications.  
B. Conceal ducts from view in finished and occupied spaces. Except where noted as exposed.  
C. Avoid passing through electrical equipment spaces and enclosures.  
D. Support and connect metal ducts according to SMACNA's "HVAC Duct Construction Standard".  
E. Install duct accessories according to applicable portions of details of construction as shown in SMACNA standards.  
F. Install liner and/or insulation on ductwork per the material schedule on sheet M010.  
G. Install volume control dampers in lined duct with methods to avoid damage to liner and to avoid erosion of duct liner.  
H. Install fire and smoke dampers according to manufacturer's UL approved written instructions.  
I. Install fusible links in fire dampers.  
J. Provide saddle taps at tees for exposed ductwork.

3.2 TESTING, ADJUSTING, AND BALANCING  
A. The Tenant will supply an independent balance agent to to balance and adjust the HVAC installation. The balance agent will be responsible for any pulley or belt changes required.  
B. The GC is to have trained staffed available during the balancing to correct issues noted by the balance agent.  
C. The balance agent is to balance airflow within distribution systems, including submains, branches, and terminals to indicated quantities +/- 10%. The hood exhaust system shall be balanced to a tolerance of -0+10% and the make-up air system to a tolerance of -10+0%.  
D. The balance agent is to supply a copy of the balance report to the Tenant, engineer and general contractor for review.

END OF SECTION 15810

SECTION 15855 - DIFFUSERS, REGISTERS, AND GRILLES  
PART 1 - GENERAL  
1.1 SECTION REQUIREMENTS  
A. Submittals: None.

PART 2 - PRODUCTS  
2.1 OUTLETS AND INLETS  
A. All air terminal devices:  
1. Refer to Grills, Registers, and Diffusers Schedule for equipment schedule  
2. Manufacturer: As scheduled (NO SUBSTITUTIONS)  
3. Material: As scheduled.  
4. Finish: As scheduled.  
5. Mounting: As scheduled.

PART 3 - EXECUTION  
3.1 INSTALLATION  
A. Coordinate location and installation with duct installation and installation of other ceiling and wall mounted items.  
B. Locate ceiling diffusers, registers, and grilles, as indicated on the architectural "reflected ceiling plans." Unless otherwise indicated, locate units in center of acoustical ceiling panels.

END OF SECTION 15855

CALIFORNIA GREEN BUILDING STANDARDS CODE  
5.410 BUILDING MAINTENANCE AND OPERATION  
5.410.4 TESTING AND ADJUSTING:  
Testing and adjusting of systems installed shall be required for buildings less than 10,000 square feet or new systems to swerve an addition or alteration subject to Section 303.1.

5.410.4.2 SYSTEMS:  
Develop a written plan of procedures for testing and adjusting systems. Systems to be included for testing and adjusting shall include at a minimum, as applicable to the project:  
1. HVAC systems and controls  
2. Indoor and outdoor lighting and controls  
3. Water heating systems  
4. Renewable energy systems  
5. Landscape irrigation systems  
6. Water reuse systems

5.410.4.3 PROCEDURES:  
Perform testing and adjusting procedures in accordance with manufacturer's specifications and applicable standards on each system.  
5.410.4.3.1 HVAC BALANCING:  
In addition to testing and adjusting, before a new space-conditioning system serving a building or space is operated for normal use, the system shall be balanced in accordance with the procedures defined by the Testing Adjusting and Balancing Bureau National Standards; the National Environmental Balancing Bureau Procedural Standards; Associated Air Balance Council National Standards or as approved by the enforcing agency.  
5.410.4.4 REPORTING:  
After completion of testing, adjusting and balancing, provide a final report of testing signed by the individual responsible for performing these services.  
5.410.4.5 OPERATION AND MAINTENANCE MANUAL:  
Provide the building owner or representative with detailed operating and maintenance instructions and copies of guarantees/warranties for each system. O&M instructions shall be consistent with OSHA requirements in CCR, Title 8, Section 5142, and other related regulations.

5.410.4.5.1 INSPECTIONS AND REPORTS:  
Include a copy of all inspection verifications and reports required by the enforcing agency.

5.504 POLLUTANT CONTROL  
5.504.1 TEMPORARY VENTILATION:  
The permanent HVAC system shall only be used during construction if necessary to condition the building or areas of addition or alteration within the required temperature range for material and equipment installation. If the HVAC system is used during construction, use return air filters with a Minimum Efficiency Reporting Value (MERV) of 8, based on ASHRAE 52.2-1999, or an average efficiency of 30% based on ASHRAE 52.1-1992. Replace air filters immediately prior to occupancy, or, if the building is occupied alteration, at the conclusion of construction.  
5.504.3 COVERING OF DUCT OPENINGS OF MECHANICAL EQUIPMENT DURING CONSTRUCTION:  
At the time of rough installation and during storage on the construction site until final startup of the heating, cooling and ventilating equipment, all duct and other related air distribution component openings shall be covered with tape, plastic, sheet metal, or other methods acceptable to the enforcing agency to reduce the amount of dust, water and debris which may collect in the system.

5.508 OUTDOOR AIR QUALITY  
5.508.1 OZONE DEPLETION AND GREENHOUSE GAS REDUCTIONS:  
Installations of HVAC, refrigeration, and fire suppression equipment shall comply with Section 5.508.1.1 and 5.508.1.2.  
5.508.1.1 CHOLOROFLUOROCARBONS (CFCS):  
Install HVAC, refrigeration and fire suppression equipment that do not contain CFCs.  
5.508.1.2 HALONS:  
Install HVAC, refrigeration and fire suppression equipment that do not contain Halons.

## HVAC GENERAL NOTES

- A GENERAL NOTES APPLY TO HVAC SHEETS.  
B WORK SHALL COMPLY WITH STATE AND LOCAL CODE REQUIREMENTS AS APPROVED AND AMENDED BY THE AUTHORITY HAVING JURISDICTION, INCLUDING APPLICABLE SECTIONS OF NFPA, THE MECHANICAL CODE, AND ANY INTERIM AMENDMENTS AT THE TIME OF THE PROPOSAL. PURCHASE PERMITS ASSOCIATED WITH THE WORK. OBTAIN INSPECTIONS REQUIRED BY CODE. SEE ARCHITECTURAL SHEETS FOR THE PREVAILING CODES.  
C CONTRACTOR AND SUBCONTRACTORS SHALL REVIEW A COMPLETE SET OF THE CONSTRUCTION DOCUMENTS.  
D COORDINATE WORK WITH THE WORK OF OTHER TRADES, EQUIPMENT FURNISHED BY OTHERS, REQUIREMENTS OF THE OWNER, AND OF THE EXISTING CONDITIONS AT THE PROJECT SITE.  
E DRAWINGS FOR THE MECHANICAL WORK ARE DIAGMMATIC, SHOWING THE GENERAL LOCATION, TYPE, LAYOUT, AND EQUIPMENT REQUIRED. THE DRAWING SHALL NOT BE SCALED FOR EXACT MEASUREMENTS, REFER TO ARCHITECTURAL DRAWINGS FOR DIMENSIONS. REFER TO MANUFACTURER'S STANDARD INSTALLATION DRAWINGS FOR EQUIPMENT CONNECTIONS AND INSTALLATION REQUIREMENTS. PROVIDE DUCTWORK, CONNECTIONS, OFFSETS, ACCESSORIES, AND MATERIALS NECESSARY FOR A COMPLETE SYSTEM.  
F DUCT DIMENSIONS ON PLANS INDICATE DIMENSIONS OF INTERNAL FREE AREA.  
G PERFORATED CEILING DIFFUSERS SHALL BE 4-WAY UNLESS NOTED OTHERWISE.  
H COORDINATE ROOF WORK WITH THE OWNER'S CONSTRUCTION MANAGER PRIOR TO CONSTRUCTION.  
I UNLESS NOTED OTHERWISE RECTANGULAR DUCT ELBOWS GREATER THAN 45° SHALL BE MITERED ELBOWS WITH DOUBLE-THICKNESS TURNING VANES AND RECTANGULAR DUCT ELBOWS 45° OR LESS SHALL BE RADIUSSED ELBOWS WITH AN INSIDE RADIUS OF AT LEAST 1/2 THE WIDTH OF THE DUCT.  
J REPLACE AIR FILTERS WITH NEW, CLEAN MERV 13 AIR FILTERS AT TURNOVER.  
K THE TERM "FURNISH" MEANS SUPPLY AND DELIVER TO THE PROJECT SITE, READY FOR UNLOADING, UNPACKING, ASSEMBLY, INSTALLATION, AND SIMILAR OPERATIONS. THE TERM "INSTALL" DESCRIBES THE OPERATIONS AT THE PROJECT SITE INCLUDING THE ACTUAL UNLOADING, UNPACKING, ASSEMBLY, ERECTING, PLACING, ANCHORING, APPLYING, WORKING TO DIMENSION, FINISHING, CURING, PROTECTING, CLEANING, AND SIMILAR OPERATIONS. THE TERM "PROVIDE" MEANS TO FURNISH AND INSTALL, COMPLETE AND READY FOR THE INTENDED USE.  
L PROVIDE LABELING CALLED FOR IN THE HVAC DRAWINGS USING ENGRAVED PHENOLIC PLATES.  
M PROVIDE P3000 12 GA. UNISTRUT WITH PG FINISH FOR DUCT SUPPORTS AND OTHER UNISTRUT IN AREAS EXPOSED TO VIEW. SLOTTED UNISTRUT AND OTHER UNISTRUT WITH HOLES IS NOT ACCEPTABLE.

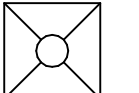
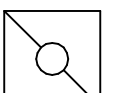
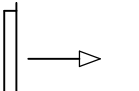
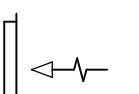

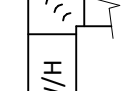
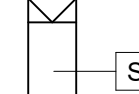
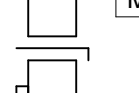
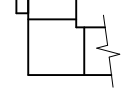

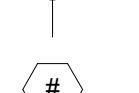
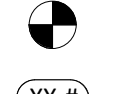
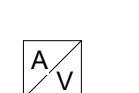
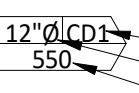

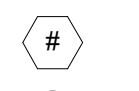
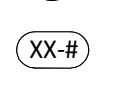

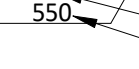

## HVAC MATERIAL SCHEDULE

CATEGORY	APPLICATION	ALLOWABLE MATERIAL
DUCT	EXPOSED SUPPLY	RECT. LINED OR ROUND AS SHOWN, NO EXPOSED DUCT-SEALING MASTIC
	EXPOSED RETURN	RECTANGULAR, NO EXPOSED DUCT-SEALING MASTIC
	EXPOSED GEN. EXHAUST	RECTANGULAR OR ROUND AS SHOWN, NO EXPOSED DUCT-SEALING MASTIC
	CONCEALED, SUPPLY	RECT. OR ROUND AS SHOWN, LINED OR INSULATED
	CONCEALED, RETURN	RECT. OR ROUND AS SHOWN, LINED OR INSULATED
CONCEALED, GEN. EXHAUST	RECT. OR ROUND AS SHOWN	
CONCEALED, TYPE I HOOD EXHAUST	RECTANGULAR 16 GA. BLACK IRON W/ WRAP OR UL 1978 FACTORY-MANUFACTURED DUCT W/ WRAP (SUBMIT SHOP DRAWINGS FOR FACTORY-MANUFACTURED DUCT PRIOR TO ORDERING FOR APPROVAL)	

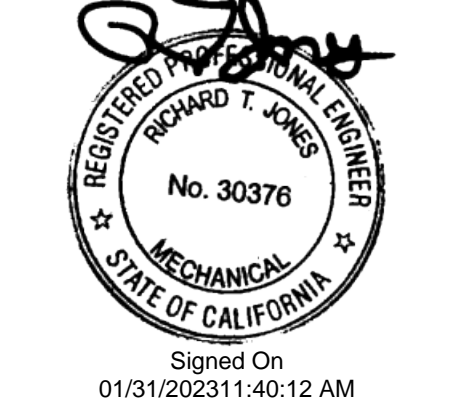
## HVAC ABBREVIATIONS

- AFF ABOVE FINISHED FLOOR  
AFG ABOVE FINISHED GRADE  
CD CEILING DIFFUSER  
CU CONDENSING UNIT  
(E) EXISTING  
EF EXHAUST FAN  
ER EXHAUST REGISTER  
EXT'G EXISTING  
HD HOOD  
MUA MAKEUP AIR UNIT  
OBD BLADE DAMPER  
RG RETURN GRILLE  
RTU ROOFTOP UNIT  
SR SUPPLY REGISTER  
VSC VARIABLE SPEED CONTROL  
  
COZAS TENANT'S CO2 ALARM SUPPLIER  
GC GENERAL CONTRACTOR  
HES TENANT'S HVAC EQUIPMENT SUPPLIER  
HS TENANT'S HOOD SUPPLIER  
KES TENANT'S KITCHEN EQUIPMENT SUPPLIER  
TAB TENANT'S TEST AND BALANCE VENDOR  
TCC TENANT'S CABLING CONTRACTOR  
TDC TENANT'S DUCT CLEANER  
TEMS TENANT'S ENERGY MANAGEMENT SYSTEM SUPPLIER  
TMS TENANT'S MENU BOARD SUPPLIER  
TMS TENANT'S MILLWORK SUPPLIER  
TP TENANT'S PHONE SUPPLIER  
TRS TENANT'S RAILING SUPPLIER  
TSV TENANT'S SIGN VENDOR  
TUV TENANT'S UV SANITIZER SUPPLIER  
WCS TENANT'S WALK-IN COOLER SUPPLIER  
WHS TENANT'S WATER HEATER SUPPLIER

## HVAC SYMBOLS

-  CEILING DIFFUSER  
 CEILING-MOUNTED RETURN OR EXHAUST REGISTER  
 SUPPLY REGISTER  
 RETURN GRILLE  
 FLEXIBLE DUCT  
 MITERED CORNER WITH TURNING VANES  
 DUCTWORK INTERNAL FREE DIMENSIONS (WIDTH/HEIGHT) RECTANGULAR TO ROUND DUCT TRANSITION  
 DUCT-MOUNTED SMOKE DETECTOR  
 MOTOR-OPERATED DAMPER  
 MANUAL VOLUME DAMPER  
 GREASE DUCT CLEANOUT  
 MITERED CORNER WITHOUT TURNING VANES  
 GRIDPOINT THERMOSTAT  
 GRIDPOINT ZONE SENSOR MODULE  
 GRIDPOINT SUPPLY PROBE  
 PLAN NOTE: SEE PLAN NOTES LISTED ON THE SAME SHEET FOR NOTE MEANING  
 CONNECT TO EXISTING  
 EQUIPMENT TAG: SEE EQUIPMENT SCHEDULE ON SHEET M600 FOR EQUIPMENT INFORMATION  
 AUDIO/VISUAL REMOTE SMOKE DETECTOR ANNUNCIATOR WITH REMOTE KEY OPERATED RESET  
 GRILL, REGISTER, OR DIFFUSER TAG: TAG NECK SIZE AIRFLOW [CFM]

Consultant:  
  
4635 Trueman Blvd. Suite 250  
Hilliard, Ohio 43026  
Phone: (614) 751-9610  
Fax: (614) 552-5240  
Contact: Edgar Palma  
(720) 629-5752  
epalma@nationalengineering.com



COPYRIGHT 2023  
THIS DRAWING IS AN INSTRUMENT OF SERVICE AND AS SUCH REMAINS THE PROPERTY OF CHIPOTLE MEXICAN GRILL, INC.. PERMISSION FOR USE OF THIS DOCUMENT IS LIMITED AND CAN BE EXTENDED ONLY BY WRITTEN AGREEMENT WITH CHIPOTLE MEXICAN GRILL, INC..



CHIPOTLE MEXICAN GRILL, INC.  
PO BOX 182566  
COLUMBUS, OH 43218-2566  
TELEPHONE: (614) 318-2400  
INTERNET: WWW.CHIPOTLE.COM

STORE NO.: 04-4679  
REDWOOD SHORES  
224 REDWOOD SHORES PKWAY  
REDWOOD CITY, CA 94065

Issue Record:

DATE	DESCRIPTION
01/30/2023	PERMIT SUBMITTAL

Revisions:

NO.	DESCRIPTION

Drawn: \_\_\_\_\_ Checked: \_\_\_\_\_  
EEP MPC

Project No.  
2101218

Contents:

## HVAC SPECIFICATIONS

# M010



CERTIFICATE OF COMPLIANCE		NRCC-MCH-E	
Project Name: Chipotle Mexican Grill - Redwood Shores	Report Page: Page 7 of 12		
Project Address: 224 Redwood Shores Parkway, Redwood City, CA 94065	Date Prepared: 01/26/2023		

**L. DISTRIBUTION (DUCTWORK AND PIPING)**

Table Instructions: Complete the following tables to show compliance with mandatory pipe insulation requirements found in §120.3 and prescriptive requirements found in §140.4(i) for duct leakage testing.

Duct Leakage Sealing		RTU supply and return ductwork		Duct leakage testing triggered for these systems?		No	
The answers to the questions below apply to the following duct system(s):							
11	No	The scope of the project includes only duct systems serving healthcare facilities.					
12	Yes	Duct system provides conditioned air to an occupiable space for a constant volume, single zone, space-conditioning system.					
13	Yes	The space conditioning system serves less than 5,000 ft <sup>2</sup> of conditioned floor area.					
14 No The combined surface area of the ducts in the following locations is more than 25% of the total surface area of the entire duct system:							
		<input type="checkbox"/>	Outdoors				
		<input type="checkbox"/>	In a space directly under a roof that has a U-factor greater than the U-factor of the ceiling, or if the roof does not meet the requirements of §140.3(a)(1)(B) or if the roof has fixed vents or openings to the outside/unconditioned spaces				
		<input type="checkbox"/>	In an unconditioned crawlspace				
		<input type="checkbox"/>	In other unconditioned spaces				
15	No	The scope of the project includes extending an existing duct system, which is constructed, insulated or sealed with asbestos.					
16	No	The scope of the project includes an existing duct system that is documented to have been previously sealed as confirmed through field verification and diagnostic testing in accordance with procedures in the Reference Nonresidential Appendix NA2.					
17		Duct system shall be sealed in accordance with the California Mechanical Code.					

**M. COOLING TOWERS**

This Section Does Not Apply

**N. DECLARATION OF REQUIRED CERTIFICATES OF INSTALLATION**

Table Instructions: Selections have been made based on information provided in previous tables of this document. If any selection needs to be changed, please explain why in Table E. Additional Remarks: These documents must be provided to the building inspector during construction and can be found online at [https://www.energy.ca.gov/title24/2019standards/2019\\_compliance\\_documents/Nonresidential\\_Documents/NRCV/](https://www.energy.ca.gov/title24/2019standards/2019_compliance_documents/Nonresidential_Documents/NRCV/).

YES	NO	Form/Title	Systems To Be Field Verified	Field Inspector	
				Pass	Fail
<input checked="" type="checkbox"/>	<input type="checkbox"/>	NRCC-MCH-01-E - Must be submitted for all buildings.		<input type="checkbox"/>	<input type="checkbox"/>

CERTIFICATE OF COMPLIANCE		NRCC-MCH-E	
Project Name: Chipotle Mexican Grill - Redwood Shores	Report Page: Page 8 of 12		
Project Address: 224 Redwood Shores Parkway, Redwood City, CA 94065	Date Prepared: 01/26/2023		

**O. DECLARATION OF REQUIRED CERTIFICATES OF ACCEPTANCE**

Table Instructions: Selections have been made based on information provided in previous tables of this document. If any selection needs to be changed, please explain why in Table E. Additional Remarks: These documents must be provided to the building inspector during construction and can be found online at [https://www.energy.ca.gov/title24/2019standards/2019\\_compliance\\_documents/Nonresidential\\_Documents/NRCA/](https://www.energy.ca.gov/title24/2019standards/2019_compliance_documents/Nonresidential_Documents/NRCA/).

YES	NO	Form/Title	Systems To Be Field Verified	Field Inspector	
				Pass	Fail
<input checked="" type="checkbox"/>	<input type="checkbox"/>	NRCA-MCH-02-A Outdoor Air must be submitted for all newly installed HVAC units. Note: MCH02-A can be performed in conjunction with MCH-07-A Supply Fan VFD Acceptance (if applicable) since testing activities overlap.		<input type="checkbox"/>	<input type="checkbox"/>
<input checked="" type="checkbox"/>	<input type="checkbox"/>	NRCA-MCH-03-A Constant Volume Single Zone HVAC NOTE: This form does not automatically move to "Yes". If Constant Volume Single Zone HVAC Systems are included in the scope, permit applicant should move this form to "Yes".		<input type="checkbox"/>	<input type="checkbox"/>
<input type="checkbox"/>	<input checked="" type="checkbox"/>	NRCA-MCH-04-A Air Distribution Duct Leakage		<input type="checkbox"/>	<input type="checkbox"/>
<input checked="" type="checkbox"/>	<input type="checkbox"/>	NRCA-MCH-05-A Air Economizer Controls		<input type="checkbox"/>	<input type="checkbox"/>
<input type="checkbox"/>	<input checked="" type="checkbox"/>	NRCA-MCH-06-A Demand Control Ventilation Systems Acceptance must be submitted for all systems required to employ demand controlled ventilation (refer to §120.1(c)(3) can vary outside ventilation flow rates based on maintaining interior carbon dioxide (CO2) concentration setpoints.		<input type="checkbox"/>	<input type="checkbox"/>
<input type="checkbox"/>	<input checked="" type="checkbox"/>	NRCA-MCH-07-A Supply Fan Variable Flow Controls		<input type="checkbox"/>	<input type="checkbox"/>
<input type="checkbox"/>	<input checked="" type="checkbox"/>	NRCA-MCH-08-A Valve Leakage Test		<input type="checkbox"/>	<input type="checkbox"/>
<input type="checkbox"/>	<input checked="" type="checkbox"/>	NRCA-MCH-09-A Supply Water Temperature Reset Controls		<input type="checkbox"/>	<input type="checkbox"/>
<input type="checkbox"/>	<input checked="" type="checkbox"/>	NRCA-MCH-10-A Hydronic System Variable Flow Controls		<input type="checkbox"/>	<input type="checkbox"/>
<input type="checkbox"/>	<input checked="" type="checkbox"/>	NRCA-MCH-11-A Automatic Demand Shed Controls		<input type="checkbox"/>	<input type="checkbox"/>

CERTIFICATE OF COMPLIANCE		NRCC-MCH-E	
Project Name: Chipotle Mexican Grill - Redwood Shores	Report Page: Page 9 of 12		
Project Address: 224 Redwood Shores Parkway, Redwood City, CA 94065	Date Prepared: 01/26/2023		

<input type="checkbox"/>	<input checked="" type="checkbox"/>	NRCA-MCH-12-A FDD for Packaged Direct Expansion Units		<input type="checkbox"/>	<input type="checkbox"/>
<input type="checkbox"/>	<input checked="" type="checkbox"/>	NRCA-MCH-13-A Automatic FDD for Air Handling Units and Zone Terminal Units Acceptance		<input type="checkbox"/>	<input type="checkbox"/>
<input type="checkbox"/>	<input checked="" type="checkbox"/>	NRCA-MCH-14-A Distributed Energy Storage DX AC Systems Acceptance NOTE: This form does not automatically move to "Yes". If Distributed Energy Storage DX AC Systems are included in the scope, permit applicant should move this form to "Yes".		<input type="checkbox"/>	<input type="checkbox"/>
<input type="checkbox"/>	<input checked="" type="checkbox"/>	NRCA-MCH-15-A Thermal Energy Storage (TES) System Acceptance NOTE: This form does not automatically move to "Yes". If Chilled Water Storage, Ice-on-Coil Internal Melt, Ice-on-Coil External Melt, Ice Harvester, Brine, Ice-Slurry, Eutectic Salt, Clathrate Hydrate Slurry (CHS), Cryogenic or Encapsulated (Ice Ball) Systems are included in the scope, permit applicant should move this form to "Yes".		<input type="checkbox"/>	<input type="checkbox"/>
<input type="checkbox"/>	<input checked="" type="checkbox"/>	NRCA-MCH-16-A Supply Air Temperature Reset Controls		<input type="checkbox"/>	<input type="checkbox"/>
<input type="checkbox"/>	<input checked="" type="checkbox"/>	NRCA-MCH-17-A Condenser Water Temperature Reset Controls		<input type="checkbox"/>	<input type="checkbox"/>
<input checked="" type="checkbox"/>	<input type="checkbox"/>	NRCA-MCH-18 Energy Management Control Systems		<input type="checkbox"/>	<input type="checkbox"/>
<input type="checkbox"/>	<input checked="" type="checkbox"/>	NRCA-MCH-19 Occupancy Sensor Controls		<input type="checkbox"/>	<input type="checkbox"/>
<input type="checkbox"/>	<input checked="" type="checkbox"/>	NRCA-MCH-20 Multi-Family Ventilation		<input type="checkbox"/>	<input type="checkbox"/>
<input type="checkbox"/>	<input checked="" type="checkbox"/>	NRCA-MCH-21 Multi-Family Envelope Leakage		<input type="checkbox"/>	<input type="checkbox"/>

CERTIFICATE OF COMPLIANCE		NRCC-MCH-E	
Project Name: Chipotle Mexican Grill - Redwood Shores	Report Page: Page 10 of 12		
Project Address: 224 Redwood Shores Parkway, Redwood City, CA 94065	Date Prepared: 01/26/2023		

**P. DECLARATION OF REQUIRED CERTIFICATES OF VERIFICATION**

Table Instructions: Selections have been made based on information provided in previous tables of this document. If any selection needs to be changed, please explain why in Table E. Additional Remarks: These documents must be completed by a HERS Rater and provided to the building inspector during construction. The final documents must be created by a HERS Providers registry, but drafts can be found online at [https://www.energy.ca.gov/title24/2019standards/2019\\_compliance\\_documents/Nonresidential\\_Documents/NRCV/](https://www.energy.ca.gov/title24/2019standards/2019_compliance_documents/Nonresidential_Documents/NRCV/).

YES	NO	Form/Title	Field Inspector	
			Pass	Fail
<input type="checkbox"/>	<input checked="" type="checkbox"/>	NRCV-MCH-04-H Duct Leakage Test NOTE: Must be completed by a HERS Rater	<input type="checkbox"/>	<input type="checkbox"/>
<input type="checkbox"/>	<input checked="" type="checkbox"/>	NRCV-MCH-24 Enclosure Air Leakage Worksheet NOTE: Must be completed by a HERS Rater	<input type="checkbox"/>	<input type="checkbox"/>
<input type="checkbox"/>	<input checked="" type="checkbox"/>	NRCV-MCH-27 High-rise Residential NOTE: Must be completed by a HERS Rater	<input type="checkbox"/>	<input type="checkbox"/>
<input type="checkbox"/>	<input checked="" type="checkbox"/>	NRCV-MCH-32 Local Mechanical Exhaust NOTE: Must be completed by a HERS Rater	<input type="checkbox"/>	<input type="checkbox"/>

CERTIFICATE OF COMPLIANCE		NRCC-MCH-E	
Project Name: Chipotle Mexican Grill - Redwood Shores	Report Page: Page 11 of 12		
Project Address: 224 Redwood Shores Parkway, Redwood City, CA 94065	Date Prepared: 01/26/2023		

**Q. MANDATORY MEASURES DOCUMENTATION LOCATION**

Table Instructions: Indicate where mandatory measures are documented in the plan set or construction documentation. For any mandatory measures that do not apply, mark the plan sheet or construction document location as "N/A", any active cells that are left blank will result in non-compliance in Table C.

Compliance with Mandatory Measures documented through MCH Mandatory Measures Note Block:	01	02	
		Plan sheet or construction document location	
Yes		M010	

CERTIFICATE OF COMPLIANCE		NRCC-MCH-E	
Project Name: Chipotle Mexican Grill - Redwood Shores	Report Page: Page 12 of 12		
Project Address: 224 Redwood Shores Parkway, Redwood City, CA 94065	Date Prepared: 01/26/2023		

**DOCUMENTATION AUTHOR'S DECLARATION STATEMENT**

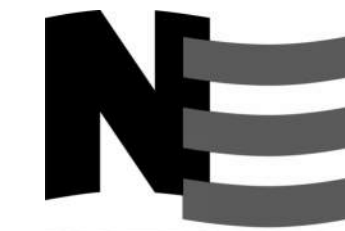
I, certify that this Certificate of Compliance documentation is accurate and complete.

Documentation Author Name: Edgar Palma	Documentation Author Signature: [Signature]
Company: National Engineering	Signature Date: 01/26/2023
Address: 4635 Trueman Blvd, Suite 250	CEA/HERS Certification Identification (if applicable):
City/State/Zip: Hilliard, OH 43026	Phone: (720) 629-5752

**RESPONSIBLE PERSON'S DECLARATION STATEMENT**

I certify the following under penalty of perjury, under the laws of the State of California:  
 1. The information provided on this Certificate of Compliance is true and correct.  
 2. I am eligible under Division 3 of the Business and Professions Code to accept responsibility for the building design or system design identified on this Certificate of Compliance (responsible designer)  
 3. The energy features and performance specifications, materials, components, and manufactured devices for the building design or system design identified on this Certificate of Compliance conform to the requirements of Title 24, Part 1 and Part 6 of the California Code of Regulations.  
 4. The building design features or system design features identified on this Certificate of Compliance are consistent with the information provided on other applicable compliance documents, worksheets, calculations, plans and specifications submitted to the enforcement agency for approval with this building permit application.  
 5. I will ensure that a completed signed copy of this Certificate of Compliance shall be made available with the building permit(s) issued for the building, and made available to the enforcement agency for all applicable inspections. I understand that a completed signed copy of this Certificate of Compliance is required to be included with the documentation the builder provides to the building owner at occupancy.

Responsible Designer Name: Richard T. Jones, PE	Responsible Designer Signature: [Signature]
Company: National Engineering	Date Signed: 01/26/2023
Address: 4635 Trueman Blvd, Suite 250	License: 30376
City/State/Zip: Hilliard, OH 43026	Phone: (614) 328-2022

Consultant:  
  
**NATIONAL ENGINEERING**  
 4635 Trueman Blvd, Suite 250  
 Hilliard, Ohio 43026  
 Phone: (614) 751-9610  
 Fax: (614) 552-5240  
 Contact: Edgar Palma  
 (720) 629-5752  
 epalma@nationalengineering.com



Signed On 01/31/2023 11:40:15 AM  
 COPYRIGHT 2023 THIS DRAWING IS AN INSTRUMENT OF SERVICE AND AS SUCH REMAINS THE PROPERTY OF CHIPOTLE MEXICAN GRILL, INC. PERMISSION FOR USE OF THIS DOCUMENT IS LIMITED AND CAN BE EXTENDED ONLY BY WRITTEN AGREEMENT WITH CHIPOTLE MEXICAN GRILL, INC.



CHIPOTLE MEXICAN GRILL, INC.  
 PO BOX 182566  
 COLUMBUS, OH 43218-2566  
 TELEPHONE: (614) 318-2400  
 INTERNET: WWW.CHIPOTLE.COM

STORE NO.: 04-4679  
 REDWOOD SHORES  
 224 REDWOOD SHORES PKWAY  
 REDWOOD CITY, CA 94065

Issue Record:

01/30/2023	PERMIT SUBMITTAL

Revisions:


Drawn: \_\_\_\_\_ Checked: \_\_\_\_\_  
 MEP MPC

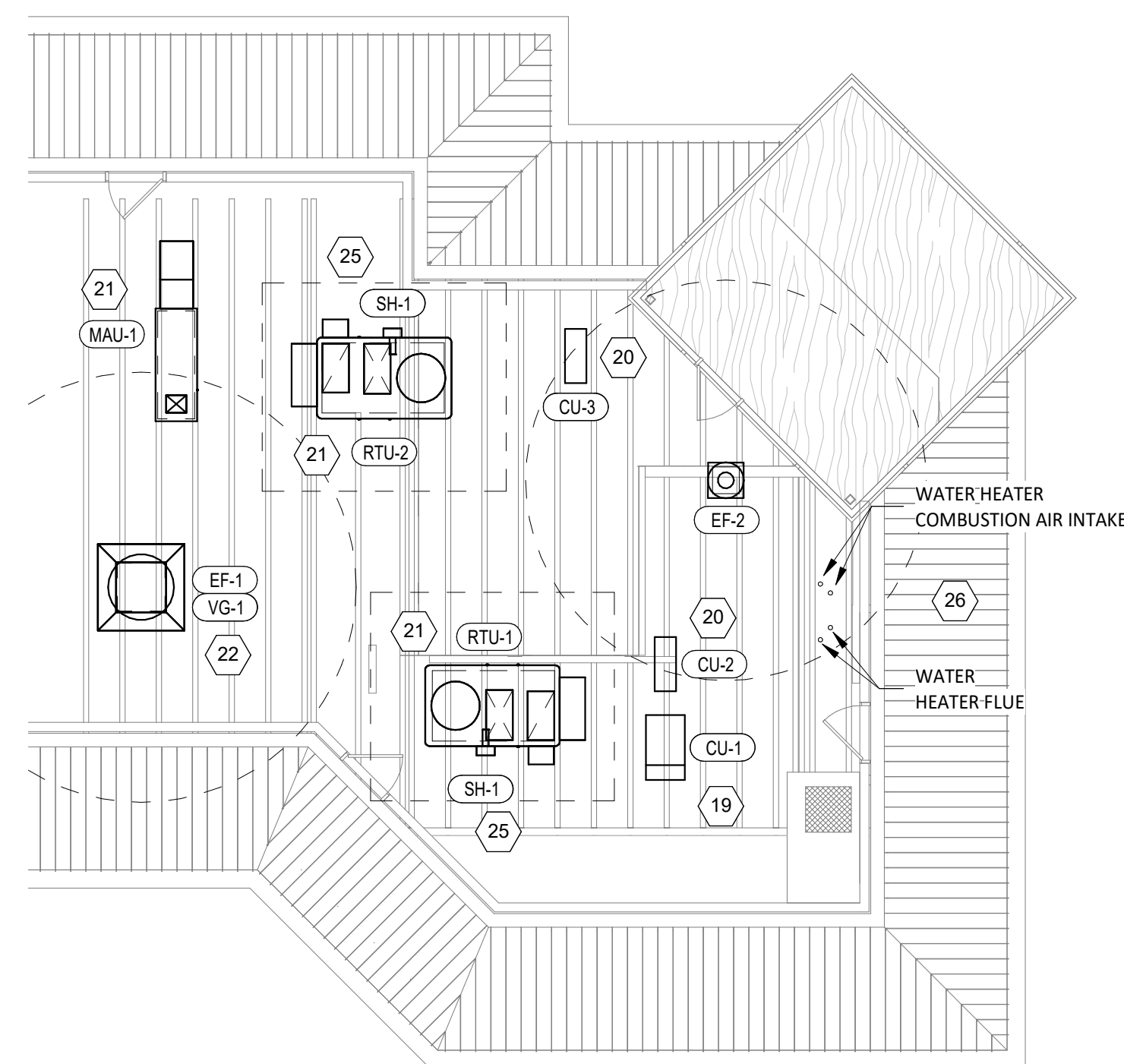
Project No:  
 2101218

Contents:  
 HVAC TITLE 24

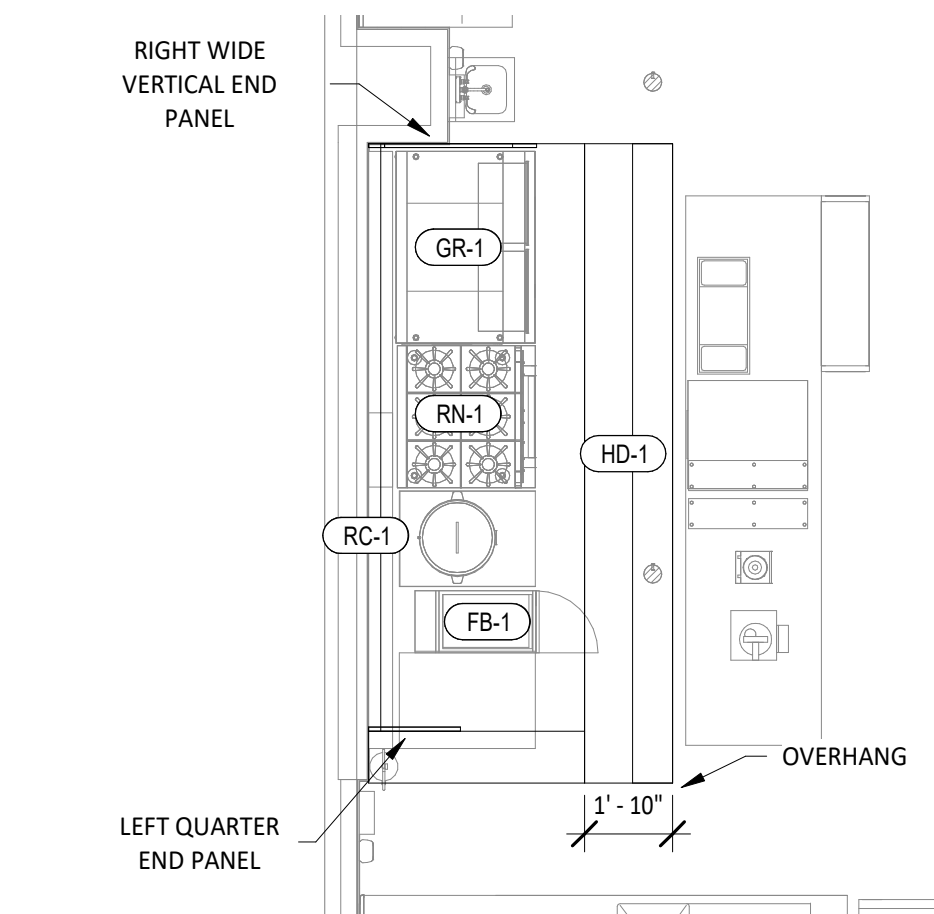
M021

### HVAC PLAN NOTES

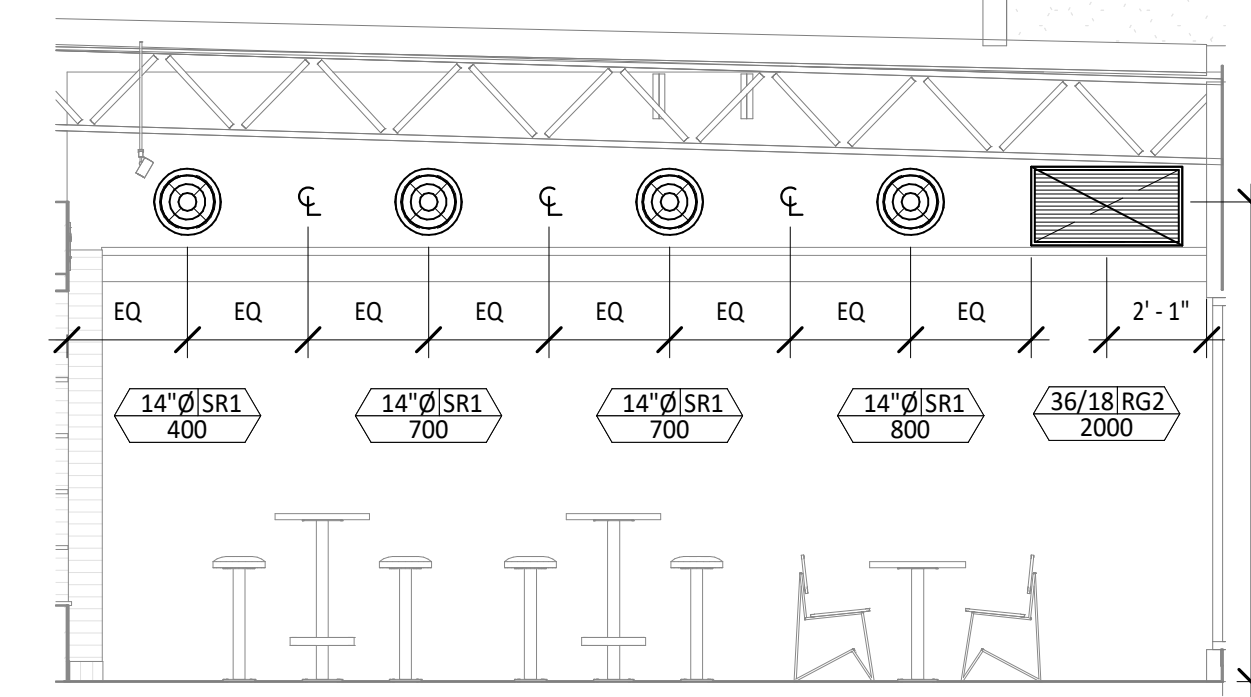
- SEE ARCHITECTURAL REFLECTED CEILING PLAN FOR CEILING MOUNTED EQUIPMENT LOCATION. TYPICAL.
- PAINT DUCTWORK VISIBLE THROUGH DINING ROOM SUPPLY REGISTERS AND RETURN GRILL BLACK. TYPICAL.
- 26/16 DUCT UP FOR TRANSITION TO RTU-1 RETURN CONNECTION IN ROOF CURB.
- 20/18 DUCT UP FOR TRANSITION TO RTU-2 RETURN CONNECTION IN ROOF CURB.
- 26/16 DUCT UP FROM BUILDING SUPPLY THROUGH ROOF. TRANSITION TO RTU-1 SUPPLY CONNECTION IN ROOF CURB. RTU-1 SHALL HAVE AN INTEGRAL SMOKE DETECTOR MOUNTED IN THE SUPPLY AIR STREAM. INTERLOCK SMOKE DETECTOR TO RTU-1 OPERATION.
- 20/22 DUCT UP FROM BUILDING SUPPLY TO RTU-2 SUPPLY CONNECTION. TRANSITION IN ROOF CURB. RTU-2 SHALL HAVE AN INTEGRAL SMOKE DETECTOR MOUNTED IN THE SUPPLY AIR STREAM. INTERLOCK SMOKE DETECTOR TO RTU-2 OPERATION.
- 16/16 DUCT UP THROUGH ROOF. TRANSITION TO MAU-1 SUPPLY CONNECTION IN ROOF CURB.
- 26/10 DUCT UP FROM HOOD THROUGH ROOF. TRANSITION TO EF-1 SUPPLY CONNECTION IN ROOF CURB.
- 6/6 DUCT UP THROUGH ROOF TO EF-2.
- 28/10 DUCT DOWN TO MAKEUP AIR PSP DUCT CONNECTION. TRANSITION TO SUPPLY PLENUM OPENING SIZE. TYPICAL FOR 3.
- 8" DIA. DUCT DOWN TO AC PSP DUCT CONNECTION. TRANSITION TO SUPPLY PLENUM OPENING SIZE. TYPICAL. CAP UNUSED DUCT CONNECTIONS.
- INSTALL GRIDPOINT THERMOSTATS FURNISHED BY TEMS FOR RTU-1 AND RTU-2 AT THIS LOCATION AT 48" AFF. COORDINATE WITH ELECTRICAL SWITCHING IN THIS AREA. PROVIDE WIRING AS SHOWN IN DETAIL 8/E710.
- INSTALL GRIDPOINT ZONE SENSOR MODULE FURNISHED BY TEMS FOR RTU-1 AT THIS LOCATION 60" AFF DIRECTLY TO WALL (NO JUNCTION BOX). COORDINATE LOCATION WITH EQUIPMENT. PROVIDE WIRING AS SHOWN IN DETAIL 8/E710.
- INSTALL GRIDPOINT ZONE SENSOR MODULE FURNISHED BY TEMS FOR RTU-2 AT THIS LOCATION 66" AFF DIRECTLY TO WALL (NO JUNCTION BOX). COORDINATE LOCATION WITH EQUIPMENT. PROVIDE WIRING AS SHOWN IN DETAIL 8/E710.
- INSTALL GRIDPOINT SUPPLY PROBE FURNISHED BY TEMS FOR RTU-1 IN THE SUPPLY DUCTWORK UPSTREAM FROM THE FIRST BRANCH CONNECTION. PROVIDE WIRING AS SHOWN IN DETAIL 8/E710.
- INSTALL GRIDPOINT SUPPLY PROBE FURNISHED BY TEMS FOR RTU-2 IN THE SUPPLY DUCTWORK UPSTREAM FROM THE FIRST BRANCH CONNECTION. PROVIDE WIRING AS SHOWN IN DETAIL 8/E710.
- INSTALL REMOTE TEMPERATURE SENSOR FOR HOOD HD-1 AT THIS LOCATION 60" AFF. COORDINATE LOCATION WITH EQUIPMENT. PROVIDE (2) #18 G. THERMISTOR CABLE FROM TEMPERATURE SENSOR TO HOOD CONTROL PANEL.
- INSTALL KITCHEN HOOD, HD-1, SUPPORT HOOD PER MANUFACTURER'S INSTALLATION INSTRUCTIONS AND AS DETAILED IN THE ARCHITECTURAL AND STRUCTURAL DRAWINGS. INSTALL REFRIGERANT LINE SET, THERMOSTATIC EXPANSION VALVE, SOLENOID VALVE, TEMPERATURE CONTROL, SIGHT GLASS, FILTER DRIER, PRESSURE CONTROL, LOW AMBIENT CONTROLS, AND WEATHERPROOF HOUSING. TRAP AND SLOPE REFRIGERANT LINES PER MANUFACTURER'S RECOMMENDATIONS. INSTALLATION SHALL COMPLY WITH ASHRAE/ANSI STANDARD 15. INSTALL THE REFRIGERANT LINE SET UNDER THE ROOF DECK TO WITHIN 3' OF THE CONDENSING UNIT. CUT 2-1/2" HOLE IN WALK-IN COOLER ROOF FOR REFRIGERANT LINE SET AND SEAL PER THE COOLER MANUFACTURER'S INSTALLATION INSTRUCTIONS AFTER LINE SET IS INSTALLED.
- INSTALL REMOTE CONDENSER FOR ICE MACHINE ON ROOF AS DETAILED IN THE ARCHITECTURAL AND STRUCTURAL DRAWINGS. INSTALL REFRIGERANT LINE SET, THERMOSTATIC EXPANSION VALVE, SOLENOID VALVE, TEMPERATURE CONTROL, SIGHT GLASS, FILTER DRIER, PRESSURE CONTROL, LOW AMBIENT CONTROLS, AND WEATHERPROOF HOUSING. TRAP AND SLOPE REFRIGERANT LINES PER MANUFACTURER'S RECOMMENDATIONS. SEAL PIPING PENETRATIONS THROUGH ROOF. INSTALLATION SHALL COMPLY WITH ASHRAE/ANSI STANDARD 15. INSTALL THE REFRIGERANT LINE SET UNDER THE ROOF DECK TO WITHIN 3' OF THE REMOTE CONDENSER. IF REFRIGERANT PIPING TO ICE MAKER IS EXPOSED TO PUBLIC VIEW CONCEAL WITHIN A STAINLESS STEEL SHROUD AS SHOWN IN THE ARCHITECTURAL DRAWINGS.
- INSTALL ROOFTOP EQUIPMENT PER MANUFACTURER'S INSTALLATION INSTRUCTIONS AND AS DETAILED IN THE ARCHITECTURAL AND STRUCTURAL DRAWINGS.
- INSTALL EXHAUST FAN EF-1 PER DETAIL 5/M700 AND AS DETAILED IN THE ARCHITECTURAL AND STRUCTURAL DRAWINGS. INSTALL GREASE VIROGUARD SYSTEM FURNISHED BY CHIPOTLE ON EXHAUST FAN, EF-1.
- PROVIDE SUPPLY DIFFUSER CONNECTION TO SUPPLY SYSTEM PER DETAIL 1/M700. TYPICAL.
- PROVIDE AUDIO/VISUAL REMOTE SMOKE DETECTOR ANNUNCIATOR WITH REMOTE KEY OPERATED RESET. WIRE A UNIT BACK TO EACH SMOKE DETECTOR. MOUNT UNIT 60" AFF. TYPICAL.
- INSTALL REME HALO AIR PURIFIER FURNISHED BY TUV IN RTU PER DETAIL 6/M700. SEE ELECTRICAL DRAWINGS FOR POWER CONNECTION INFORMATION. INSTALL UV WARNING STICKERS ON FACE OF ENCLOSURE PER DETAIL AND ON ANY RTU ACCESS DOOR(S) THROUGH WHICH THE REME HALO WOULD BE VISIBLE IF OPENED.
- MAINTAIN 10' CLEARANCE BETWEEN WATER HEATER FLUE TERMINATION AND OUTSIDE AIR INTAKES. MAINTAIN 10' CLEARANCE BETWEEN WATER HEATER COMBUSTION AIR INTAKE AND EXHAUST FAN EF-1 DISCHARGE. SEE PLUMBING DRAWINGS FOR MORE INFORMATION ON WATER HEATER FLUE AND COMBUSTION AIR TERMINATIONS.
- ADJUST SUPPLY REGISTERS SO THAT SUPPLY AIR HITS WALL ON OPPOSITE SIDE OF ROOM AT APPROXIMATELY 7' AFF WITH NO DRAFTS FELT IN THE DINING ROOM.



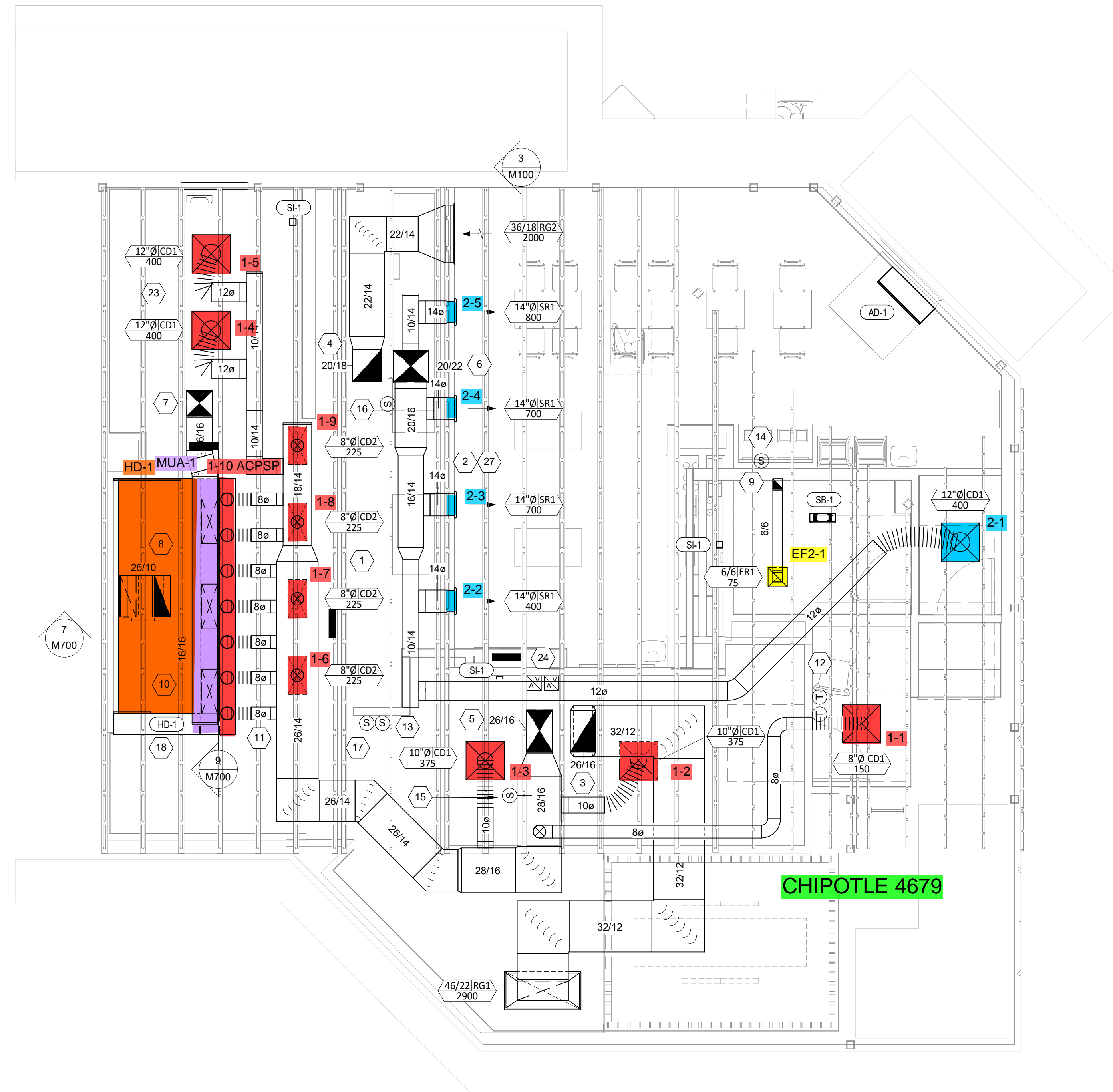
2  
M100  
1/8" = 1'-0"



4  
M100  
1/4" = 1'-0"



3  
M100  
1/4" = 1'-0"



1  
M100  
1/4" = 1'-0"

Consultant:



4635 Trueman Blvd, Suite 250  
Hilliard, Ohio 43026  
Phone: (614) 751-9610  
Fax: (614) 552-5240  
Contact: Edgar Palma  
(720) 629-5752  
epalma@nationalengineering.com



Signed On  
01/31/2023 11:40:16 AM

COPYRIGHT 2023  
THIS DRAWING IS AN INSTRUMENT OF SERVICE  
AND AS SUCH REMAINS THE PROPERTY OF  
CHIPOTLE MEXICAN GRILL, INC. PERMISSION FOR  
USE OF THIS DOCUMENT IS LIMITED AND CAN BE  
EXTENDED ONLY BY WRITTEN AGREEMENT WITH  
CHIPOTLE MEXICAN GRILL, INC.



CHIPOTLE MEXICAN GRILL, INC.  
PO BOX 182566  
COLUMBUS, OH 43218-2566  
TELEPHONE: (614) 318-2400  
INTERNET: WWW.CHIPOTLE.COM

STORE NO.: 04-4679  
REDWOOD SHORES  
224 REDWOOD SHORES PKWAY  
REDWOOD CITY, CA 94065

Issue Record:  
01/30/2023 PERMIT SUBMITTAL

Revisions:

Drawn: EEP  
Checked: MPC

Project No:  
2101218

Contents:

HVAC PLAN

M100

VIROGUARD SCHEDULE							
TAG	QUANTITY	DESCRIPTION	DUCT CONNECTION SIZE	FAN	FURNISHED BY	INSTALLED BY	BASIS FOR DESIGN MANUFACTURER
VG-1	1	VIROGUARD HOOD EXHAUST FAN ROOFTOP CONTAINMENT SYSTEM	16" X 16"	CAPTIVE-AIRE DU180HFA	TDC	GC	ENVIROMATIC

AIR DOOR SCHEDULE												
TAG	OPENING WIDTH	AIRFLOW			ELECTRICAL			FURNISHED BY	INSTALLED BY	BASIS FOR DESIGN		REMARKS
		MAX FPM	AVG FPM	CFM	MOC P	FLA	V/P/H			MANUFACTURER	MODEL	
AD-1	36"	3600	2116	1036	20 A	3.4 A	120/1/60	GC	GC	BERNER	ALC08-1036A	

GRILLS, REGISTERS, AND DIFFUSERS SCHEDULE										
TAG	DESCRIPTION	FACE SIZE	MATERIAL	FINISH	MOUNTING	FURNISHED BY	INSTALLED BY	BASIS FOR DESIGN		NOTES
								MANUFACTURER	MODEL	
CD1	PERFORATED CEILING DIFFUSER	24" X 24"	ALUMINUM	WHITE	LAY-IN CEILING	GC	GC	NAILOR	4320A TYPE L	PROVIDE INTEGRAL OBD
CD2	PERFORATED CEILING DIFFUSER	24" X 12"	ALUMINUM	WHITE	LAY-IN CEILING	GC	GC	NAILOR	4320A TYPE L	PROVIDE INTEGRAL OBD, REMOVE 4-WAY DEFLECTOR
ER1	PERFORATED CEILING EXHAUST	12" X 12"	ALUMINUM	WHITE	GYP CEILING	GC	GC	NAILOR	4330R TYPE S	PROVIDE INTEGRAL OBD
RG1	PERFORATED CEILING RETURN	46" X 22"	ALUMINUM	WHITE	LAY-IN CEILING	GC	GC	NAILOR	4330R TYPE L	
RG2	0" FIXED BLADE RETURN GRILLE	36" X 18"	ALUMINUM	WHITE	SURFACE MOUNT	GC	GC	NAILOR	51FH	
SR1	ADJUSTABLE TURBO NOZZLE	SEE NECK SIZE	ALUMINUM	WHITE	WALL	GC	GC	AIR CONCEPTS	ANR-14	PROVIDE FACE-ACCESSIBLE OBD

FAN SCHEDULE											
TAG	DRIVE TYPE	EXHAUST FLOW [CFM]	E.S.P. [in W.C.]	WEIGHT [lbs]	ELECTRICAL		FURNISHED BY	INSTALLED BY	BASIS FOR DESIGN		REMARKS
					MOTOR POWER	V/P/H			MANUFACTURER	MODEL	
EF-1	DIRECT	2800 CFM	1.50 in-wg	183	2 HP	208/3/60	HS	GC	CAPTIVE-AIRE	DU180HFA	FURNISHED WITH DISCONNECT AND VENTED ROOF CURB
EF-2	DIRECT	75 CFM	0.60 in-wg	50	0.25 HP	120/1/60	HS	GC	CAPTIVE-AIRE	DR12HFA	FURNISHED WITH DISCONNECT, VARIABLE SPEED CONTROLLER, BACKDRAFT DAMPER AND ROOF CURB

MAKEUP AIR UNIT SCHEDULE															
TAG	DESCRIPTION	AIRFLOW		HEATING CAPACITY				APPROXIMATE WEIGHT [lbs]	ELECTRICAL		FURNISHED BY	INSTALLED BY	BASIS FOR DESIGN		REMARKS
		SUPPLY FLOW [CFM]	E.S.P. [in W.C.]	INPUT [MBH]	OUTPUT [MBH]	MAXIMUM TURNDOWN	EAT		MOTOR POWER	V/P/H			MANUFACTURER	MODEL	
MAU-1	MAKEUP AIR UNIT	1650	0.80	65.3	60.1	12.5:1	34 °F	497	1.5 HP	208/3/60	HS	GC	CAPTIVE-AIRE	A1-D.500-15D	FURNISHED WITH DISCONNECT, ROOF CURB, SCREEN INTAKE, AND WASHABLE ALUMINUM FILTERS

CONDENSING UNIT SCHEDULE															
TAG	DESCRIPTION	NOMINAL CAPACITY [TONS]	NUMBER OF COMPRESSORS	NUMBER OF CIRCUITS	REFRIGERANT TYPE	REFRIGERANT CHARGE	WEIGHT (lb)	ELECTRICAL			FURNISHED BY	INSTALLED BY	BASIS FOR DESIGN		REMARKS
								MOC P	FLA	V/P/H			MANUFACTURER	MODEL	
CU-1	WALK-IN COOLER REMOTE CONDENSING UNIT		1	1	R-404A	10.4 lb	200	15 A	9.0 A	208/3/60	WCS	GC	EVERIDGE	RF0130E4SEAALNT	FURNISHED WITH WALK-IN COOLER
CU-2	ICE MAKER - REMOTE CONDENSER		0	1	R-404A	11.46 lb	100			120/1/60	KES	GC	HOSHIZAKI	URC-9F	FURNISHED WITH ICE MAKER
CU-3	ICE MAKER - REMOTE CONDENSER		0	1	R-404A	3.86 lb	100			120/1/60	KES	GC	HOSHIZAKI	URC-9F	FURNISHED WITH ICE MAKER

KITCHEN HOOD SCHEDULE																										
TAG	DESCRIPTION	MAX COOKING TEMP.	EXHAUST PLENUM							PERFORATED SUPPLY PLENUMS							NUMBER OF LIGHT FIXTURES	APPROXIMATE WEIGHT [lbs]	FURNISHED BY	INSTALLED BY	BASIS FOR DESIGN		REMARKS			
			AIRFLOW [CFM]	SP [in. W.C.]	DUCT COLLARS			SP [in. W.C.]	SUPPLY PLENUM LENGTH	SUPPLY PLENUM WIDTH	MAU PLENUM			AC PLENUM		MANUFACTURER					MODEL					
					NO.	WIDTH	LENGTH				NO.	WIDTH	LENGTH	AIRFLOW [CFM]	DUCT COLLARS							NO.		DIAMETER		
HD-1	TYPE I CANOPY HOOD WITH QUARTER END PANEL ON HCP END, WIDE VERTICAL END PANEL ON END WITHOUT HCP, PERFORATED MAU AND AC SUPPLY PLENUMS	600°F	2800	1.05	1	10"	26"	12'-3"	4'-3"	0.2	13'-4"	22"	1650	3	10"	28"	800	7	8"	8	1200	HS	GC	CAPTIVE-AIRE	5424 ND-2-ACPSP-F	MAT'L: 18 GA. TYPE 430 SS. PROVIDE WITH 16" TALL HE SS FILTERS, INTEGRAL UTILITY CABINET, ANSUL SYSTEM, DUCT COLLAR TEMPERATURE SENSOR, PREWIRE PACKAGE, SPARE FIRE SYSTEM DRY CONTACT, AND 4-POLE 20A CONTACTOR, RIGHT WIDE VERTICAL END PANEL, AND LEFT QUARTER END PANEL.

ROOFTOP UNIT SCHEDULE																											
TAG	DESCRIPTION	NOMINAL CAPACITY [TONS]	EER	AIRFLOW			NET COOLING CAPACITY				HEATING CAPACITY			# OF COMPRESSORS	# OF CIRCUITS	REFRIG. TYPE	REFRIG. CHARGE	APPROX. WEIGHT [lbs]	ELECTRICAL			FURNISHED BY	INSTALLED BY	BASIS FOR DESIGN		REMARKS	
				TOTAL [CFM]	OA [CFM]	ESP [IN. W.C.]	TOTAL [MBH]	SENSIBLE [MBH]	EAT [DEG. F]	COND. EAT [DEG. F]	INPUT [MBH]	OUTPUT [MBH]	EAT [DEG. F]						MOC P	FLA	V/P/H			MANUFACTURER	MODEL		
RTU-1	KITCHEN ROOFTOP UNIT	8.5	11	3400	500	0.8	73	58	75	64	92	121.5	97.2	62	2	2	R-410A	6.3/4.9	1400	60 A	48.0 A	208/3/60	HES	GC	TRANE	YSJ102	FURNISHED WITH COATED COILS, LOW LEAK COMP. ENTHALPY ECON., BAROMETRIC RELIEF, SUP. SMOKE DETECTOR W/ REMOTE KEYED ANNUNCIATOR/RESET, M.O.D., MERV-13 FILTERS, CURB, HAIL GUARD, TOOLLESS HINGED ACCESS PANELS, DISCONNECT, & UNIT-MOUNTED CONVENIENCE RECEPTACLE
RTU-2	DINING ROOM ROOFTOP UNIT	7.5	11	3000	1000	0.8	72	65	78	64	92	150	120	56	2	2	R-410A	5.5/4.2	1400	50 A	42.0 A	208/3/60	HES	GC	TRANE	YSJ090	FURNISHED WITH COATED COILS, LOW LEAK COMP. ENTHALPY ECON., BAROMETRIC RELIEF, SUP. SMOKE DETECTOR W/ REMOTE KEYED ANNUNCIATOR/RESET, M.O.D., MERV-13 FILTERS, CURB, HAIL GUARD, TOOLLESS HINGED ACCESS PANELS, DISCONNECT, & UNIT-MOUNTED CONVENIENCE RECEPTACLE

AIR BALANCE SCHEDULE				
Tag	Supply Flow [CFM]	Return Flow [CFM]	Exhaust Flow [CFM]	Subtotal [CFM]
EF-1	0	0	2800	-2800
EF-2	0	0	75	-75
MAU-1	1650	0	0	1650
RTU-1	3400	2900	0	500
RTU-2	3000	2000	0	1000
Net Pressurization [CFM]				275

SANITIZING EQUIPMENT SCHEDULE									
TAG	COUNT	DESCRIPTION	FURNISH ED BY	INSTALLE D BY	BASIS FOR DESIGN		REMARKS		
					MANUFACTURER	MODEL			
SB-1	1	BATHROOM AIR PURIFICATION UNIT	TUV	GC	RGF ENVIRONMENTAL GROUP	BRU ASSEMBLY	SEE ELECTRICAL SHEETS FOR CONNECTION INFORMATION		
SH-1	2	HVAC AIR PURIFICATION UNIT	TUV	GC	RGF ENVIRONMENTAL GROUP	REME-HALO	SEE DETAIL 6/M700 FOR INSTALLATION INFORMATION.		
SI-1	3	ICE MACHINE TREATMENT SYSTEM	TUV	GC	RGF ENVIRONMENTAL GROUP	IMS-B-GA	SEE PLUMBING DRAWINGS FOR INSTALLATION INFORMATION.		

CONTROL FUNCTIONS
A. THE MAIN COOKING EXHAUST FAN AND MAKE-UP AIR UNIT SHALL BE INTERLOCKED TO OPERATE TOGETHER. THIS CONTROL CIRCUIT IS ACTIVATED BY A SWITCH AND INCLUDES A FIRE PROTECTION OVERRIDE.
B. THE TEMPERATURE IN EACH ZONE IS CONTROLLED BY SPACE TEMPERATURE SENSORS CONNECTED TO THE THERMOSTATS LOCATED IN THE OFFICE. ALL ZONES SHALL OPERATE WITH CONTINUOUS FAN OPERATION DURING OCCUPIED TIMES AND INTERMITTENTLY AS NEEDED TO MAINTAIN SET POINTS DURING UNOCCUPIED TIMES. OUTSIDE AIR DAMPERS SHALL BE OPEN CONTINUOUSLY WHEN EITHER IN OCCUPIED MODE OR WHEN THE HOOD SYSTEM IS ON AND SHALL BE CLOSED DURING UNOCCUPIED PERIODS.
C. THE THERMOSTATS SHALL DETERMINE OCCUPIED/UNOCCUPIED STATUS BASED ON THE SCHEDULE IN THE ENERGY MANAGEMENT SYSTEM.

Consultant:  
  
**NATIONAL**  
 ENGINEERING  
 4635 Trueman Blvd, Suite 250  
 Hilliard, Ohio 43026  
 Phone: (614) 751-9610  
 Fax: (614) 552-5240  
 Contact: Edgar Palma  
 (720) 629-5752  
 epalma@nationalengineering.com



COPYRIGHT 2023  
 THIS DRAWING IS AN INSTRUMENT OF SERVICE AND AS SUCH REMAINS THE PROPERTY OF CHIPOTLE MEXICAN GRILL, INC. PERMISSION FOR USE OF THIS DOCUMENT IS LIMITED AND CAN BE EXTENDED ONLY BY WRITTEN AGREEMENT WITH CHIPOTLE MEXICAN GRILL, INC.



CHIPOTLE MEXICAN GRILL, INC.  
 PO BOX 182566  
 COLUMBUS, OH 43218-2566  
 TELEPHONE: (614) 318-2400  
 INTERNET: WWW.CHIPOTLE.COM

STORE NO.: 04-4679  
 REDWOOD SHORES  
 224 REDWOOD SHORES PKWAY  
 REDWOOD CITY, CA 94065

Issue Record:  
 01/30/2023 PERMIT SUBMITTAL

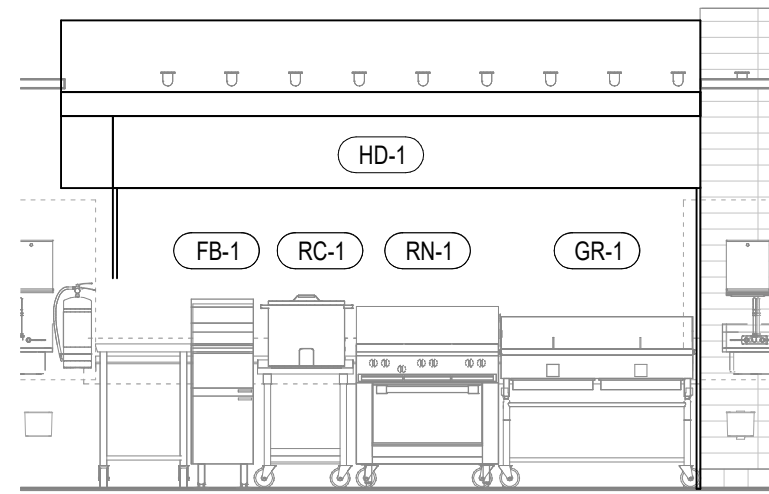
Revisions:

Drawn: EEP  
 Checked: MPC

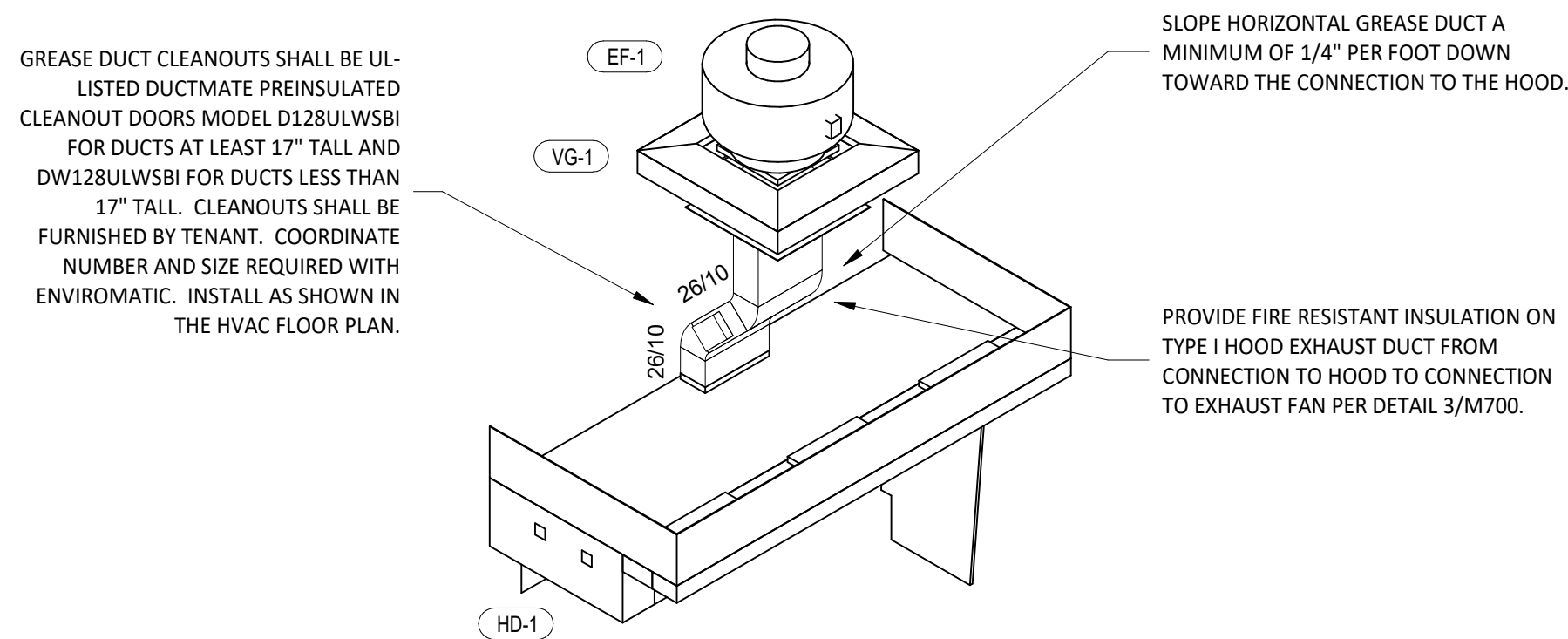
Project No:  
 2101218

Contents:  
 HVAC SCHEDULES

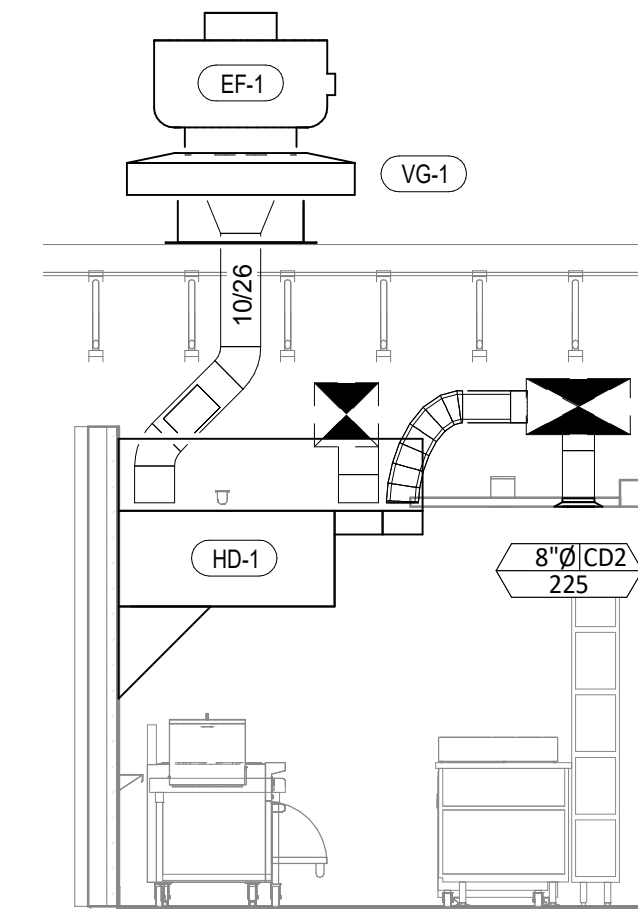
M600



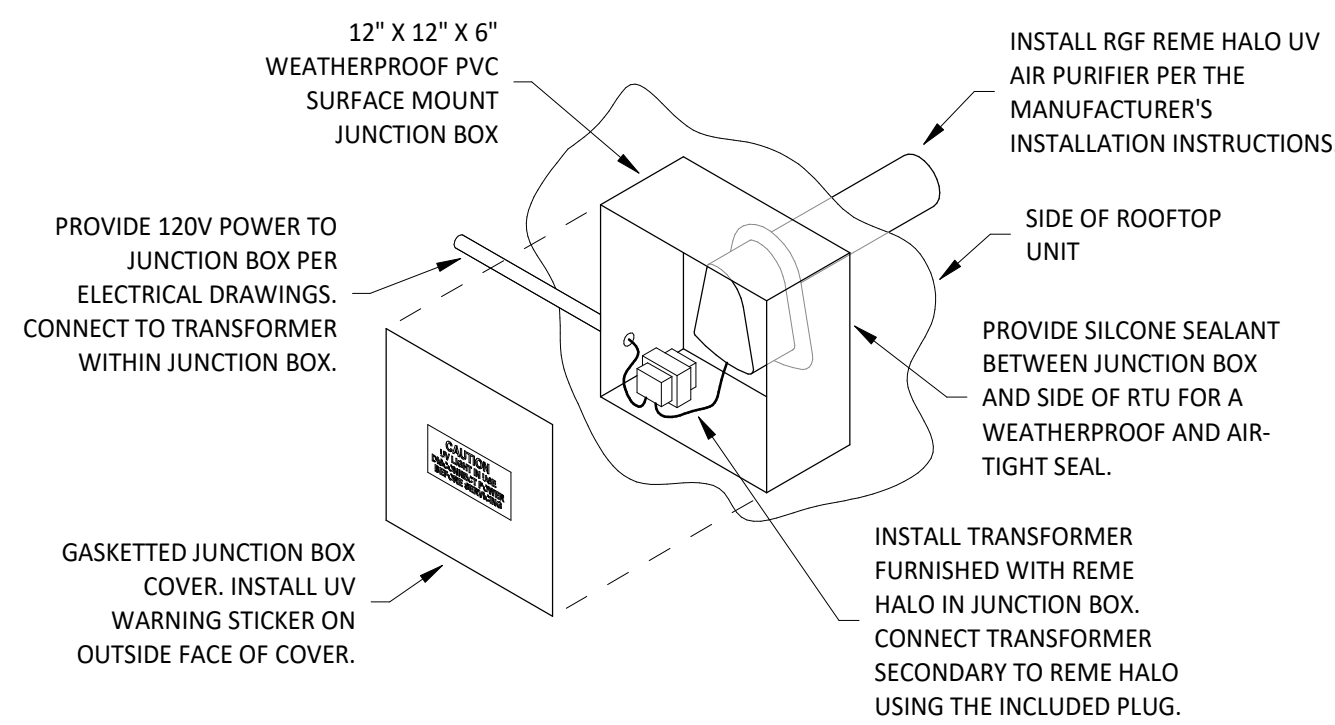
**9 HOOD ELEVATION**  
1/4" = 1'-0"



**8 HOOD EXHAUST ISOMETRIC**  
N.T.S.

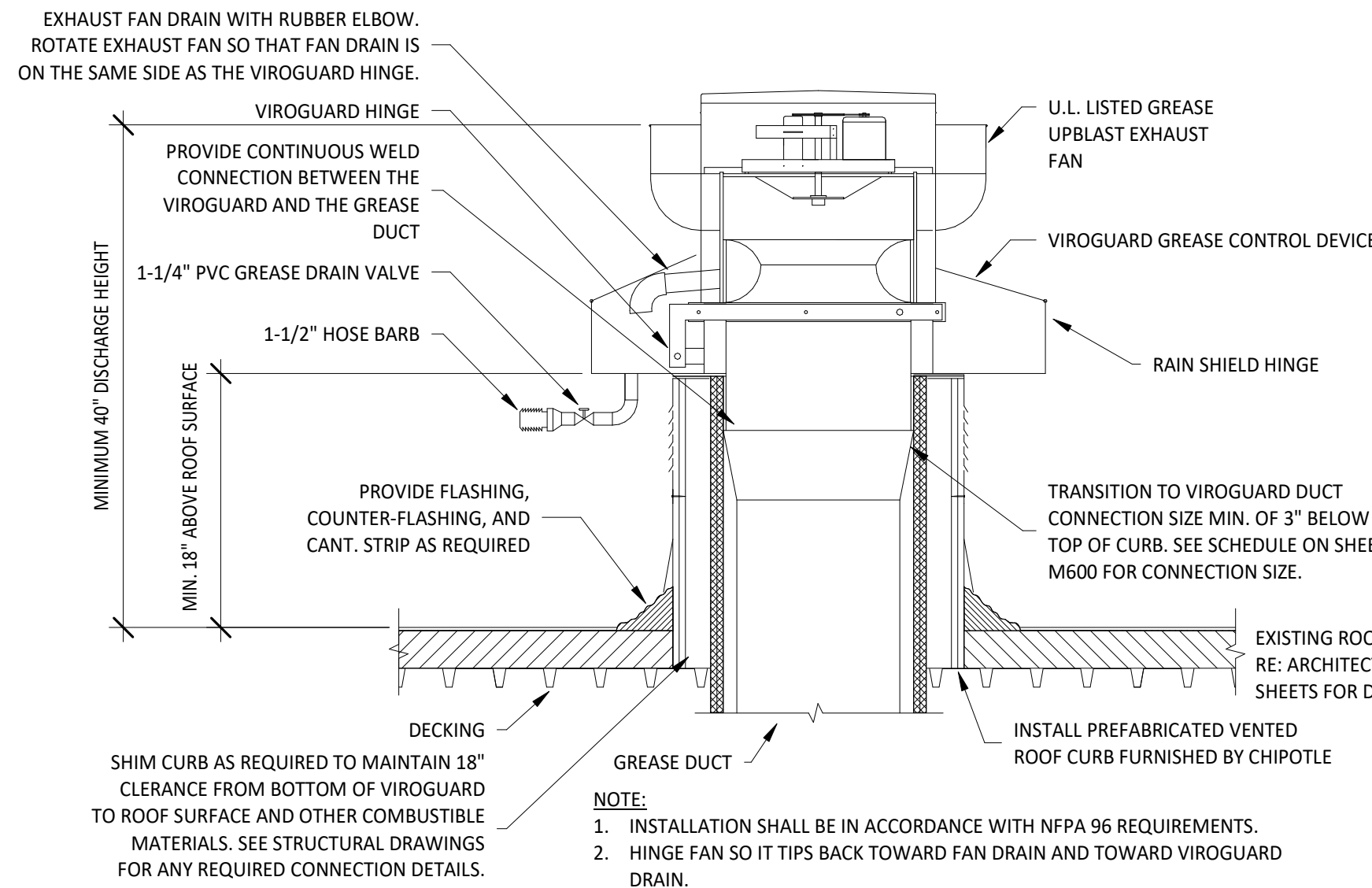


**7 DUCT SECTION AT HOOD**  
1/4" = 1'-0"

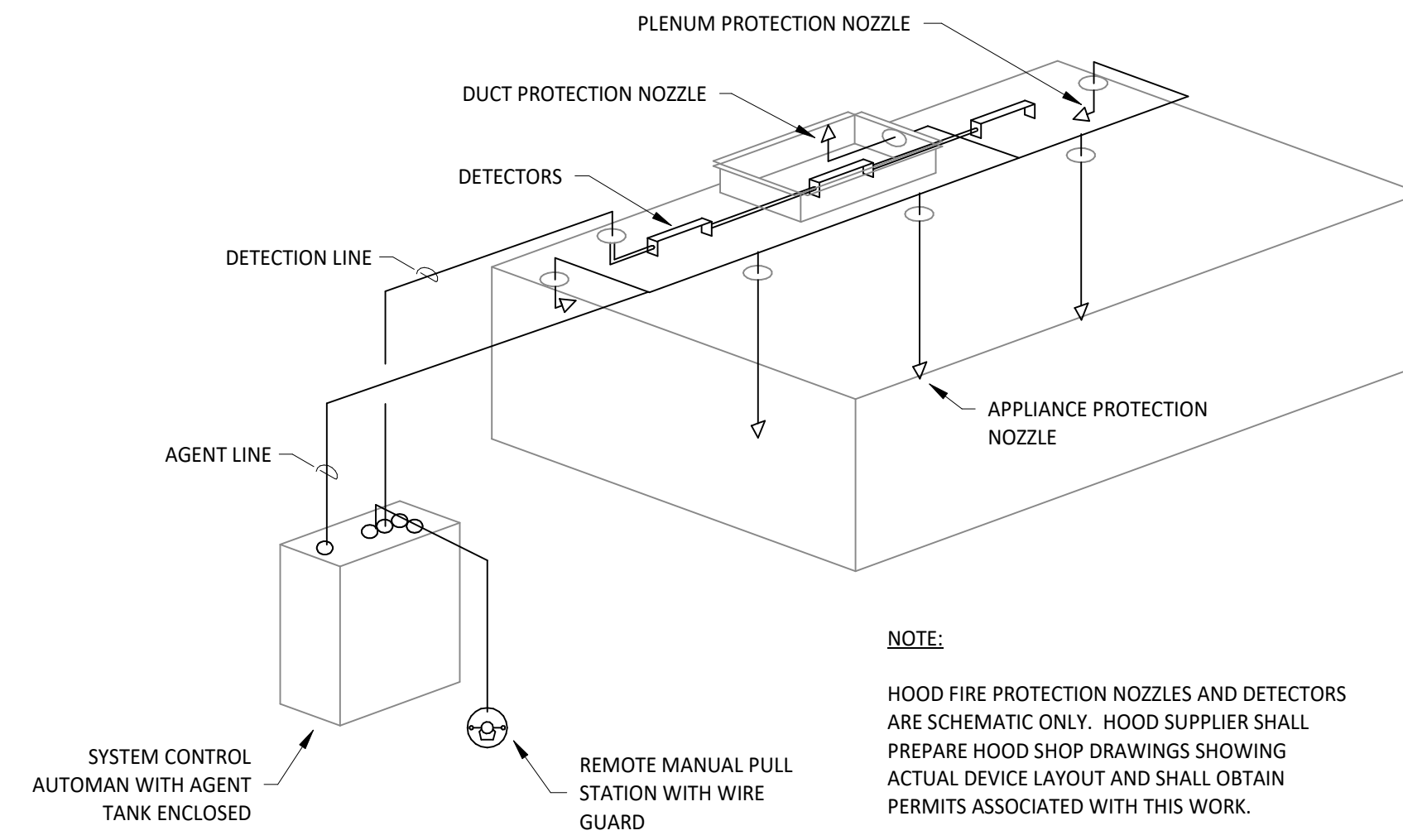


**INSTALLATION LOCATION**  
INSTALL AIR PURIFIER WITH JUNCTION BOX ON OUTSIDE FACE OF ROOFTOP UNIT AND WITH UV LAMP TUBE EXTENDING INTO THE INTERIOR OF THE ROOFTOP UNIT. FIELD VERIFY EXACT LOCATION TO AVOID DAMAGING, TOUCHING, OR INTERFERING WITH ANY RTU INTERIOR COMPONENTS. INSTALLATION LOCATION SHALL BE AS FOLLOWS:  
**FRAME:** INSTALL INTO THE SUPPLY AIR STREAM THROUGH THE REMOVABLE PANEL COVERING THE HORIZONTAL DISCHARGE SUPPLY AIR OPENING.  
**WORK:** INSTALL INTO THE SUPPLY AIR PLENUM FROM THE BACK SIDE OF THE UNIT JUST ABOVE THE HEAT EXCHANGER.

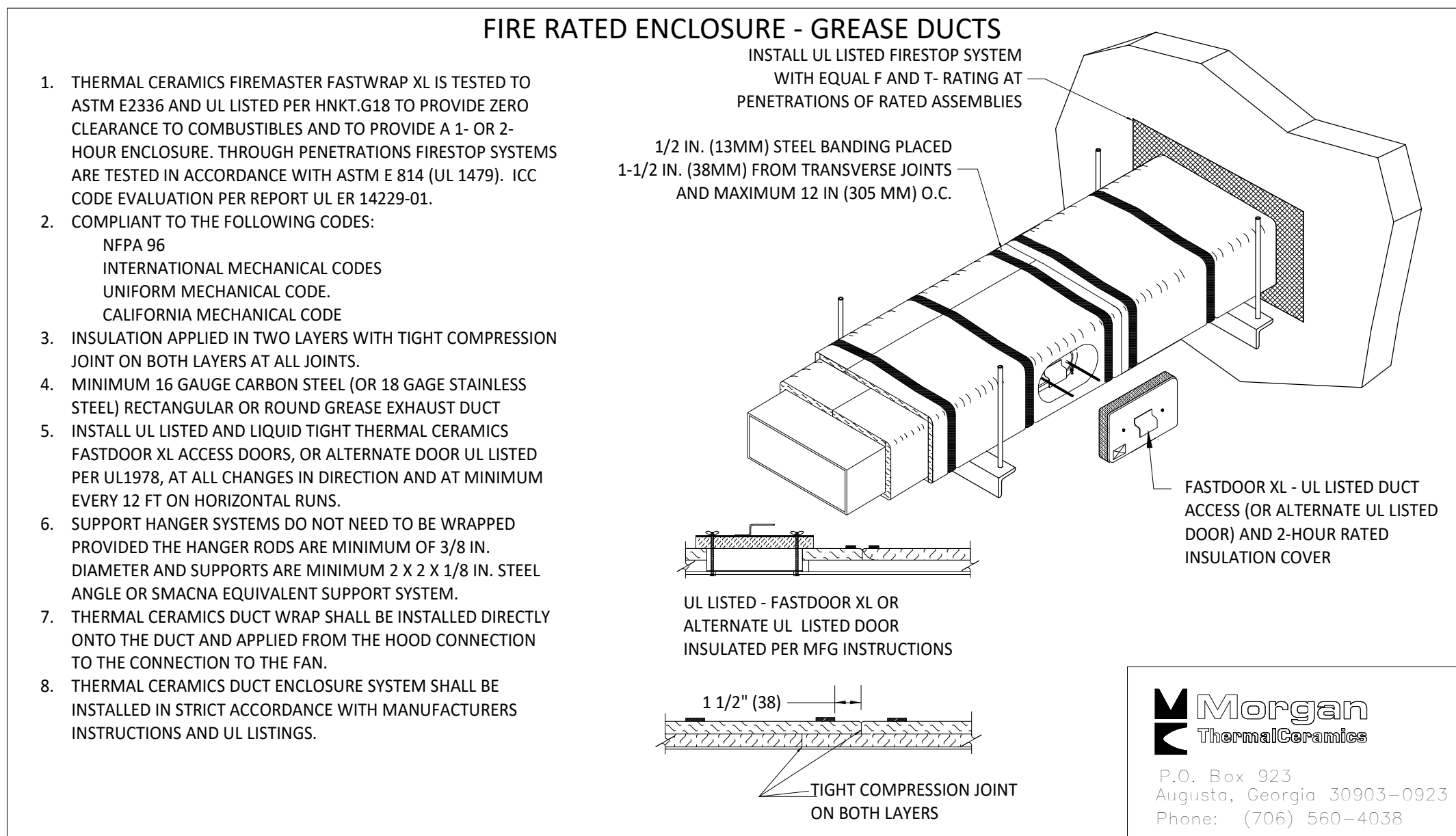
**6 UV AIR PURIFIER INSTALLATION**  
N.T.S.



**5 GREASE EXHAUST FAN**  
N.T.S.



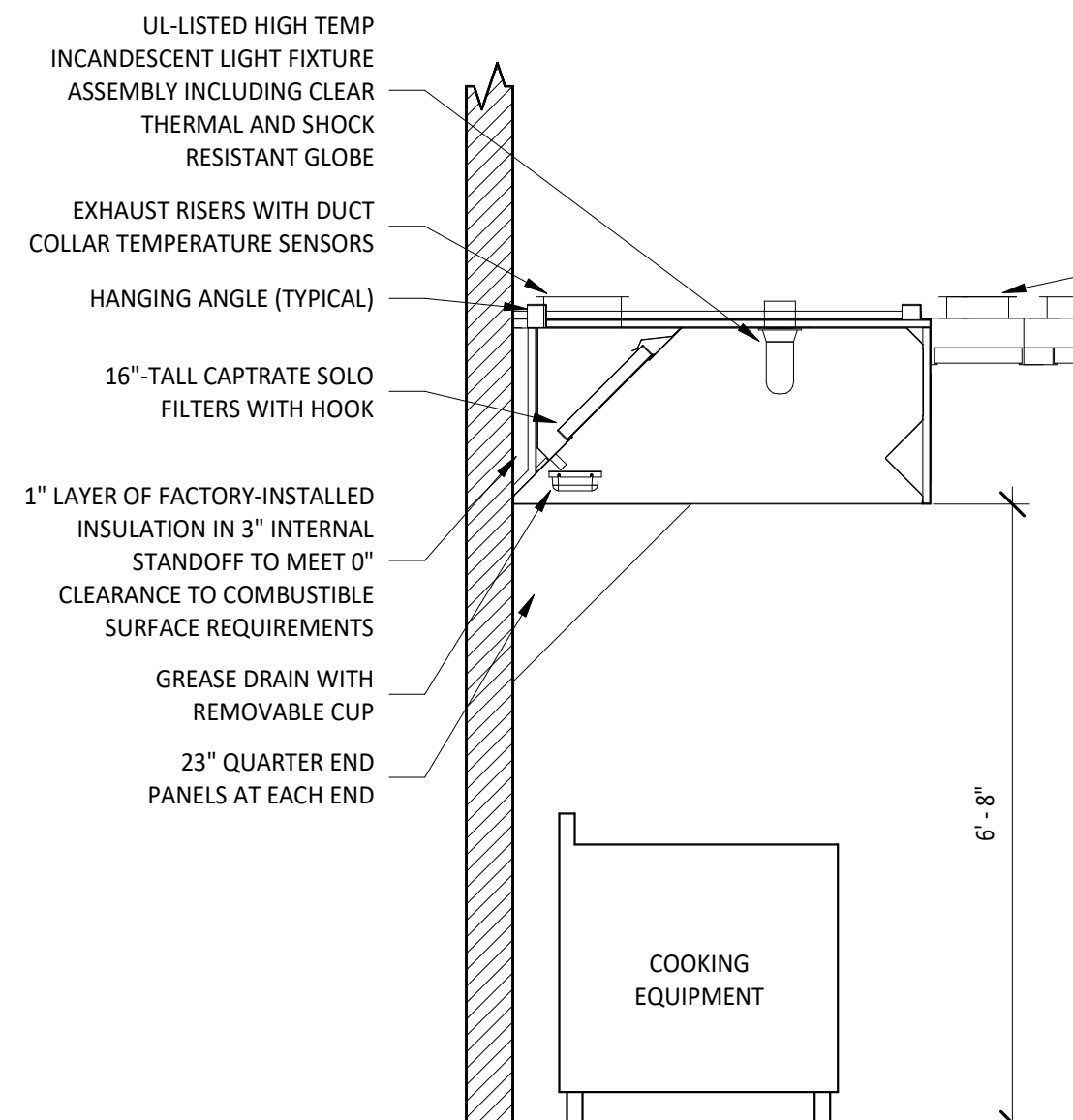
**4 FIRE SUPPRESSION SYSTEM SCHEMATIC**  
N.T.S.



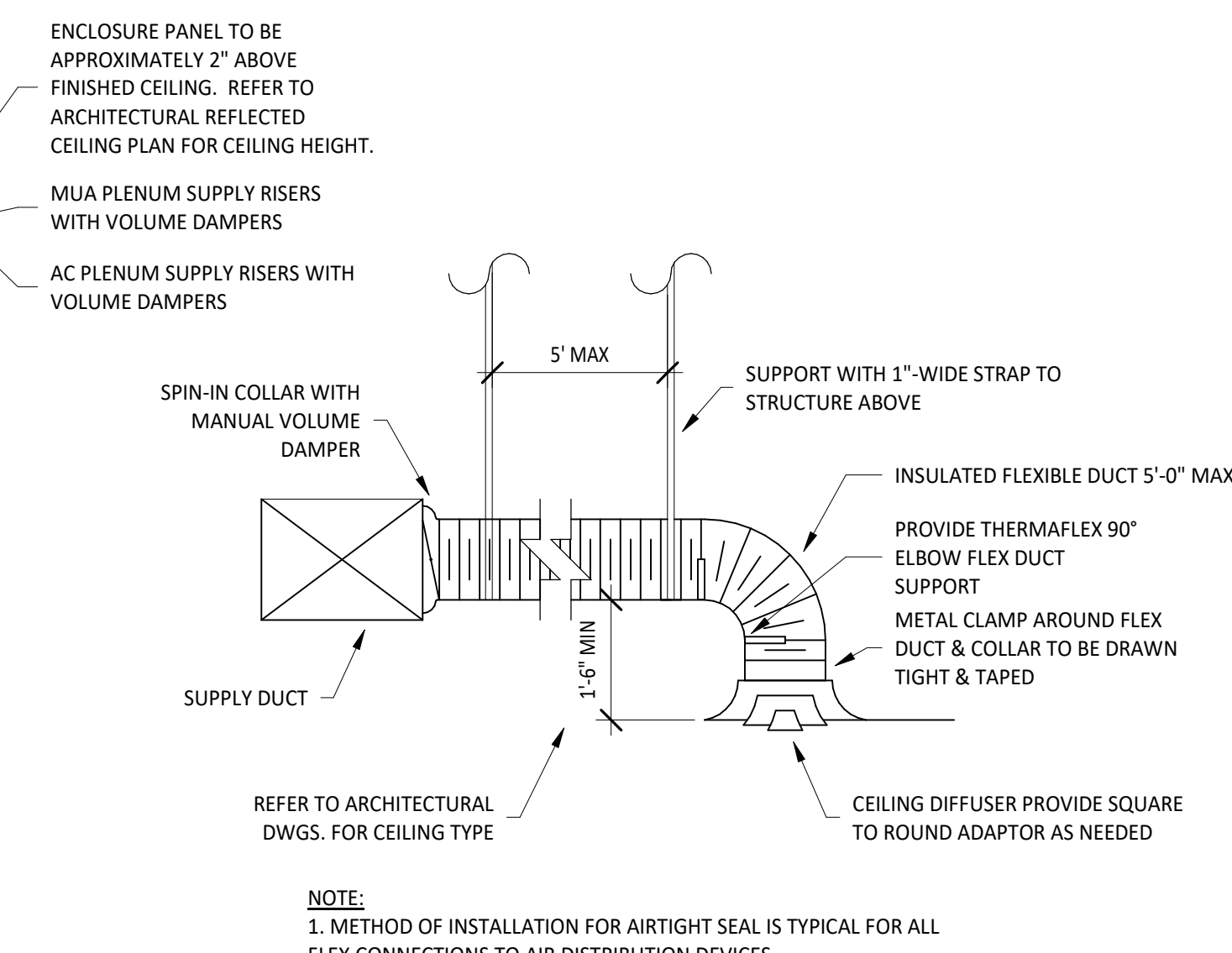
- THERMAL CERAMICS FIREMASTER FASTWRAP XL IS TESTED TO ASTM E2336 AND UL LISTED PER HNKT-G18 TO PROVIDE ZERO CLEARANCE TO COMBUSTIBLES AND TO PROVIDE A 1- OR 2-HOUR ENCLOSURE. THROUGH PENETRATIONS FIRESTOP SYSTEMS ARE TESTED IN ACCORDANCE WITH ASTM E 814 (UL 1479). ICC CODE EVALUATION PER REPORT UL ER 14229-01.
- COMPLIANT TO THE FOLLOWING CODES:  
NFPA 96  
INTERNATIONAL MECHANICAL CODES  
UNIFORM MECHANICAL CODE  
CALIFORNIA MECHANICAL CODE
- INSULATION APPLIED IN TWO LAYERS WITH TIGHT COMPRESSION JOINT ON BOTH LAYERS AT ALL JOINTS.
- MINIMUM 16 GAUGE CARBON STEEL (OR 18 GAGE STAINLESS STEEL) RECTANGULAR OR ROUND GREASE EXHAUST DUCT
- INSTALL UL LISTED AND LIQUID TIGHT THERMAL CERAMICS FASTDOOR XL ACCESS DOORS, OR ALTERNATE DOOR UL LISTED PER UL1978, AT ALL CHANGES IN DIRECTION AND AT MINIMUM EVERY 12 FT ON HORIZONTAL RUNS.
- SUPPORT HANGER SYSTEMS DO NOT NEED TO BE WRAPPED PROVIDED THE HANGER RODS ARE MINIMUM OF 3/8 IN. DIAMETER AND SUPPORTS ARE MINIMUM 2 X 2 X 1/8 IN. STEEL ANGLE OR SMACNA EQUIVALENT SUPPORT SYSTEM.
- THERMAL CERAMICS DUCT WRAP SHALL BE INSTALLED DIRECTLY ONTO THE DUCT AND APPLIED FROM THE HOOD CONNECTION TO THE CONNECTION TO THE FAN.
- THERMAL CERAMICS DUCT ENCLOSURE SYSTEM SHALL BE INSTALLED IN STRICT ACCORDANCE WITH MANUFACTURERS INSTRUCTIONS AND UL LISTINGS.

**Morgan Thermal Ceramics**  
P.O. Box 923  
Augusta, Georgia 30903-0923  
Phone: (706) 560-4038

**3 FIREMASTER DUCT WRAP - UL HNKT-G18**  
N.T.S.



**2 HOOD SECTION VIEW**  
N.T.S.



**NOTE:**  
1. METHOD OF INSTALLATION FOR AIRTIGHT SEAL IS TYPICAL FOR ALL FLEX CONNECTIONS TO AIR DISTRIBUTION DEVICES.

**1 DIFFUSER CONNECTION**  
N.T.S.

Consultant:  
**NE NATIONAL ENGINEERING**  
4635 Trueman Blvd, Suite 250  
Hilliard, Ohio 43026  
Phone: (614) 751-9610  
Fax: (614) 552-5240  
Contact: Edgar Palma  
(720) 629-5752  
epalma@nationalengineering.com



Signed On 01/31/2023 11:40:18 AM  
COPYRIGHT 2023  
THIS DRAWING IS AN INSTRUMENT OF SERVICE AND AS SUCH REMAINS THE PROPERTY OF CHIPOTLE MEXICAN GRILL, INC. PERMISSION FOR USE OF THIS DOCUMENT IS LIMITED AND CAN BE EXTENDED ONLY BY WRITTEN AGREEMENT WITH CHIPOTLE MEXICAN GRILL, INC.



CHIPOTLE MEXICAN GRILL, INC.  
PO BOX 182566  
COLUMBUS, OH 43218-2566  
TELEPHONE: (614) 318-2400  
INTERNET: WWW.CHIPOTLE.COM

STORE NO.: 04-4679  
REDWOOD SHORES  
224 REDWOOD SHORES PKWAY  
REDWOOD CITY, CA 94065

Issue Record:  
01/30/2023 PERMIT SUBMITTAL

Revisions:

Drawn: Checked:

EEP MPC

Project No:

2101218

Contents:

HVAC DETAILS

M700