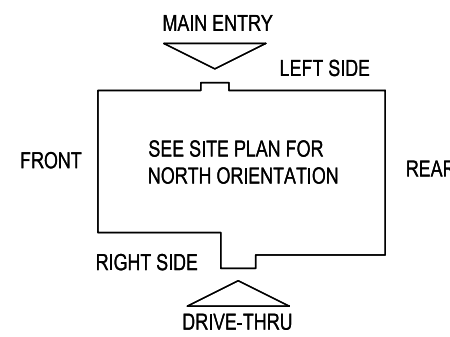


**E5 HVAC PLAN**  
SCALE: 1/4" = 1'-0"



SUPPLY DUCTWORK SIZING TABLE*			
ROUND		RECTANGULAR	
SIZE	CFM RANGE	SIZE	CFM RANGE
8"	115 - 235	8"x8"	205 - 300
10"	240 - 435	10"x8"	305 - 400
12"	440 - 710	10"x10"	405 - 550
14"	715 - 1,070	12"x10"	555 - 700
16"	1,075 - 1,530	12"x12"	705 - 900
18"	1,535 - 2,090	14"x12"	905 - 1,105
20"	2,095 - 2,760	16"x12"	1,110 - 1,315
22"	2,765 - 3,550	18"x12"	1,320 - 1,520
24"	3,555 - 4,470	20"x12"	1,525 - 1,740
*CONTRACTOR MAY SUBSTITUTE RECTANGULAR FOR ROUND DUCTWORK ON MAIN RUNS AT THEIR DISCRETION. BRANCHES TO DIFFUSERS TO REMAIN ROUND.		22"x12"	1,745 - 1,950
		24"x12"	1,955 - 2,170
		26"x12"	2,175 - 2,400
		28"x12"	2,405 - 2,610
		30"x12"	2,615 - 2,840
		32"x12"	2,845 - 3,070
		34"x12"	3,075 - 3,290
		36"x12"	3,295 - 3,520
		36"x14"	3,525 - 4,420

DIFFUSER, REGISTER, AND GRILLE SCHEDULE									
TAG	SERVICE	TYPE	MATERIAL	THROW	FACE	NECK	MOUNTING	MANUFACTURER/MODEL	Notes
SD-1	SUPPLY	LOUVERED	STEEL	4-WAY	24X24	SEE PLAN	LAY-IN	RAYMON PRO2	2, 4
SD-2 - NOT USED									
SD-3	SUPPLY	LOUVERED	STEEL	3-WAY	12X12	SEE PLAN	SURFACE	RAYMON PRO2/QMF/DAG	2, 4
SD-4	SUPPLY	LOUVERED	STEEL	4-WAY	12X12	SEE PLAN	SURFACE	RAYMON PRO2/QMF	2, 4
SD-5	SUPPLY	PERFORATED	STEEL	PERFORATED	24X24	SEE PLAN	LAY-IN	RAYMON RPR	2, 4
RG-1	RETURN	SQUARE EGGRATE	ALUMINUM	N/A	24X24	22X22	LAY-IN	RAYMON FGEC-TB1	2, 3, 4
EG-1	EXHAUST	LOUVERED GRILLE	ALUMINUM	N/A	12X12	SEE PLAN	SURFACE	RAYMON RA-HVD	1, 2, 4
TG-1	TRANSFER	LOUVERED GRILLE	ALUMINUM	N/A	SEE PLAN	SEE PLAN	SURFACE	RAYMON RA-RH	2, 4

**DIFFUSER NOTES:**

- PROVIDE w/ ADJUSTABLE OPPOSED BLADE DAMPER
- VERIFY ALL DIFFUSERS AND RETURN GRILLE COLORS WITH OWNER AND ARCHITECT
- PROVIDE w/ 22X22 PLENUM BOX.
- ALL DIFFUSERS AND RETURNS LOCATED IN BLACK CEILING SHALL BE FLAT BLACK FINISH.

© 2024

**NEW CULVER'S RESTAURANT**  
2061 N IL Route 50  
Bourbonnais, IL 60914  
County of KANKAKEE

OWNER:  
OWNER: RAR OF ROMEVILLE, LLC  
400 E Summit Avenue  
Wales, WI 53183  
Tony Milazzo  
262-751-5381

OWNER: OLLMANN ERNEST MARTIN ARCHITECTS  
200 South State Street  
Belvidere Illinois 61008  
815-544-7190 Phone  
© OEMA. All rights reserved. Any copying, transmission or disclosure subject to OEMA written approval.

DATE: 8-29-2024  
Revision: 12-5-2024

**HVAC PLAN, DIFFUSER SCHEDULE**

2024-082  
M101

CONSTRUCTION SET 12-5-2024

## GENERAL NOTES

- DEVIATIONS FROM THE HVAC PLANS ARE THE RESPONSIBILITY OF THE HVAC CONTRACTOR & WILL NOT RESULT IN ADDITIONAL COSTS TO THE OWNER UNLESS WRITTEN CHANGE ORDERS ARE APPROVED BY THE OWNER.
- ALL WORK TO BE PERFORMED TO STATE CODE & SMACNA GUIDELINES.
- INSTALL UNITS ACCORDING TO MANUFACTURERS GUIDELINES.
- PROVIDE OWNER W/ OPERATION & MAINTENANCE MANUALS & SYSTEM SCHEMATICS.
- CONTRACTOR TO CONFIRM VOLTAGES & PHASES OF EQUIPMENT PRIOR TO INSTALLATION.
- VERIFY ALL EXISTING CONDITIONS PRIOR TO INSTALLATION (DRAWINGS ARE DIAGRAMMATIC IN NATURE & DO NOT REFLECT EXACT LOCATIONS OF EQUIPMENT OR OTHER APPARATUS.)
- PROVIDE SHOP DRAWINGS TO THE ARCHITECT/DESIGNER FOR EQUIPMENT, FANS, REGISTERS, ETC. PRIOR TO PROCUREMENT.
- PROVIDE OWNER W/ COLOR CHOICES FOR SWITCHES & OTHER APPARATUS WHERE APPLICABLE.
- VENT OWNER WATER HEATER AS REQUIRED.
- VENT DRYER THRU SIDEWALL TO EXTERIOR AS REQUIRED. MAINTAIN CLEARANCE FROM INTAKES AS NOTED.
- HANG & SUPPORT MATERIALS SHALL BE INSTALLED THE LATEST EDITION OF THE ASHRAE HANDBOOK OF FUNDAMENTALS.
- MAINTAIN AT LEAST 10 FEET CLEARANCE FROM INTAKES OR WINDOWS ON ALL EXHAUST VENTS.
- TEST, ADJUST, & CALIBRATE CONTROL SYSTEMS AS REQUIRED. PROVIDE SCHEMATICS / DESCRIPTION TO THE OWNER PRIOR TO INSTALLATION.
- INSTALLER RESPONSIBLE FOR FINAL TEST & BALANCING DURING TRAINING WEEK. PROVIDE WRITTEN REPORT BY THIRD PARTY INDEPENDENT TAB CONTRACTOR.
- VERIFY W/ OWNER EXACT HEATER LOCATION TO AVOID BUILDING FUNCTION INTERFERENCE.
- REPLACE ALL AIR FILTERS PRIOR TO TURNING SYSTEM OPERATIONS OVER TO OWNER.
- HVAC CONTRACTOR IS RESPONSIBLE FOR A COMPLETE & FULLY WORKING SYSTEM.
- DUCT DIMENSIONS LISTED ARE NET FREE - CLEAR INSIDE DIMENSIONS.
- VERIFY DUCT LOCATIONS PRIOR TO FABRICATION. (VERIFY LIMITED AREA FOR DUCTWORK & OTHER APPARATUS.)
- INSULATE DUCT WORK TO SMACNA GUIDELINES & STATE CODES.
- INSTALL VOLUME CONTROL DAMPERS AS INDICATED ON PLANS.
- FLEXIBLE ROUND DUCT WORK NOT TO EXCEED 5 FEET IN LENGTH, AVOID UNNECESSARY TURNS & SLACK.
- RETURN AIR DUCT WORK TO BE LINED FOR SOUND ATTENUATION.
- DUCT WORK TO BE STANDARD GAUGE SHEET METAL (FIBROUS DUCT NOT ALLOWED.)
- INSULATE EXHAUST DUCT FOR EXHAUST FAN TO EXTERIOR TERMINATION.
- COORDINATE WORK W/ GENERAL CONTRACTOR & OWNER TO MAXIMIZE CEILING HEIGHT & AVOID CONFLICTS.
- S/S WALL PANELS FOR THE KITCHEN AREA ARE TO BE FURNISHED AND INSTALLED BY THE HVAC CONTRACTOR. PANELS ARE TO BE 18 GA. TYPE 304 S/S. SEE DETAILS AND LOCATIONS ON THE A103 DRAWING.
- EXHAUST FANS AND FURNACE FANS TO RUN CONTINUOUSLY DURING OCCUPIED MODE.
- NIGHT SET BACK THERMOSTATS TO BE INSTALLED ON ALL HVAC EQUIPMENT.

## NATIONAL ACCOUNT PROGRAM

- LENNOX INDUSTRIES, INC.** - ROOFTOP HVAC EQUIPMENT  
NATIONAL ACCOUNTS SALES: [LennoxNationalAccounts@lennoxind.com](mailto:LennoxNationalAccounts@lennoxind.com);  
copy to: [dave.ebner@lennoxind.com](mailto:dave.ebner@lennoxind.com)  
NATIONAL ACCOUNT TECHNICAL SUPPORT: (800) 367-6285 Option #2 [lennoxind.com](mailto:lennoxind.com)
- ACCUREX/ GREENHECK FAN CORPORATION** - KITCHEN HOODS, EXHAUST FANS, ROOF CURBS, ANSUL SYSTEMS, ACCESSORIES AND TEST AND BALANCE  
CONTACT PHILIP KRAFT: 1-262-227-7865 [philip.kraft@accurex.com](mailto:philip.kraft@accurex.com)  
SECONDARY CONTACT BRAD BORCHARDT: 1-715-551-6809 [brad.borchardt@accurex.com](mailto:brad.borchardt@accurex.com)  
SECONDARY CONTACT ANDY JACOBS: [andy.jacobs@accurex.com](mailto:andy.jacobs@accurex.com)  
ACCUREX WILL PROVIDE BALANCED AIRFLOW AND FUNCTIONAL CHARACTERISTICS OF THE HVAC AS THEY RELATE TO AIRFLOW AND RESISTANCE ONLY. SERVICES TO BE PERFORMED BY A CERTIFIED NEBB FIRM AND ITS MANAGING GROUP - NATIONAL TAB
- RAYMON AIR DISTRIBUTION** - DIFFUSERS AND GRILLES  
NATIONAL ACCOUNTS SALES [HUNZICKER LLC](mailto:hunzickerllc)  
[MARIE WILSON - \(608\) 845-9551](mailto:marie.wilson-(608)845-9551) [marie@hunzickerllc.com](mailto:marie@hunzickerllc.com)

## 2024-082 CULVER'S OF BRADLEY, IL BOURBONNAIS, IL

### RTU SCHEDULES

UNIT No	AREA SERVED	SUPPLY FAN					COOLING						HEATING				ELECTRICAL (1)		MANUFACTURER, MODEL		
		SUPLY FAN TYPE	SA FAN VFD	SUPPLY CFM	MIN OA CFM	ESP	OA TEMP		MIXED AIR TEMP		SUPPLY TEMP		COIL CAPACITY		GAS OR ELEC	OUTPUT MBH	OAT °FDB	HEATING STAGES		VOLTAGE	PHASE
							°FDB	°FWB	°FDB	°FWB	COIL LAT °FDB	COIL LAT °FWB	SENSIBLE MBH	LATENT MBH							
RTU-1	DINING ROOM	MSAV	YES	6,150	1,750	0.75"	90	77	79.55	67.64	55.00	54.89	160	80	GAS	234	-20	2	208	3	LENNOX ENLIGHT LGT
RTU-2	KITCHEN	MSAV	YES	6,150	1,700	0.75"	90	77	79.37	67.29	55.00	54.77	162	77	GAS	182	-20	2	208	3	LENNOX ENLIGHT LGT

### ADDITIONAL FACTORY INSTALLED OPTIONS FOR BOTH UNITS:

- WEATHERPROOF DISCONNECT
- FACTORY INSTALLED/FIELD POWERED GFCI
- RETURN SMOKE DETECTOR
- DRAIN PAN OVERFLOW SWITCH
- SINGLE ENTHALPY ECONOMIZER W/ FAULT DETECTION DIAGNOSTICS
- BAROMETRIC RELIEF
- HAIL GUARDS
- 2" MERV 13 FILTERS
- SS HEAT EXCHANGER
- HOT GAS REHEAT

### ADDITIONAL FIELD INSTALLED OPTIONS FOR BOTH UNITS:

- 14" DOWNFLOW HYBRID CURB
- PVC DRAIN TRAP KIT
- REMOTE TEMPERATURE AND HUMIDITY SENSORS
- LENNOX MODEL CS7500 PROGRAMMABLE THERMOSTAT
- OUTDOOR AIR CFM CONTROL

### NOTES:

- NOTIFY ELECTRICAL CONTRACTOR OF BREAKER REQUIREMENTS AFTER SELECTION

PRV-1 RESTROOM EXHAUST FAN - REFER TO SHEET M204

PRV-2 GRIDDLE EXHAUST FAN - REFER TO SHEET M202

PRV-3 FRYER EXHAUST FAN - REFER TO SHEET M203

EF-1A MOP ROOM EXHAUST FAN - REFER TO SHEET M204

ITEM #49A GRIDDLE HOOD - REFER TO SHEET M202

ITEM #59A FRYER HOOD - REFER TO SHEET M203

ECH-1 ELECTRIC CEILING HEATER Q-MARK OR EQUAL CDF-548 ELECTRIC CEILING HEATER & CDF RECESSED MOUNTING FRAME, CDF-TRA TRANSFORMER & WALL MOUNTED THERMOSTAT, 208/240 VOLT SINGLE PHASE = 19.2 AMPS (SUPPLIED AND INSTALLED BY ELECTRICAL CONTRACTOR.)

## CONTROL NOTES

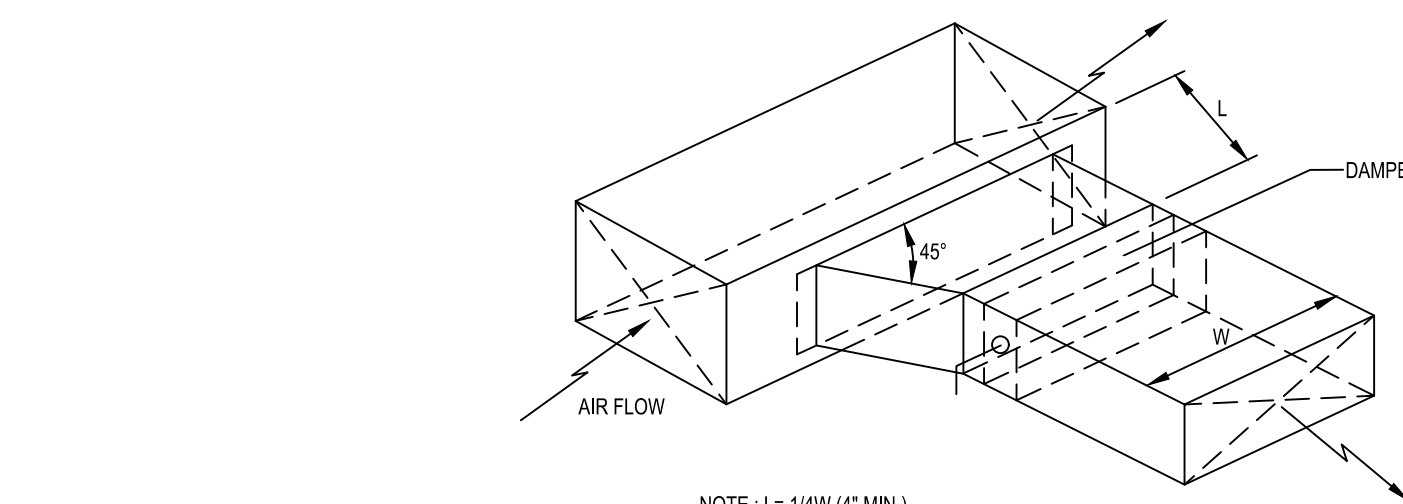
[NOTE: KITCHEN HOODS SUPPLIED AND INSTALLED BY HVAC CONTRACTOR]

- WIRE RTU-1, RTU-2 TO SHUT-DOWN & EXHAUST HOOD FANS TO CONTINUE TO RUN UPON ACTIVATION OF THE ANSUL SYSTEM.
- WIRE RTU-1 & RTU-2 TO SHUT-DOWN UPON ACTIVATION OF ANY IN-DUCT SMOKE DETECTOR.
- OCCUPIED MODE: FANS IN RTU-1 & RTU-2, EXHAUST FANS PRV-1, PRV-2, PRV-3 AND EF-1 TO RUN CONTINUOUSLY.
- UNOCCUPIED MODE: FANS IN RTU-1 & RTU-2 TO RUN ONLY WHEN COOLING OR HEATING IS CALLED FOR.

## TEST & BALANCE NOTES

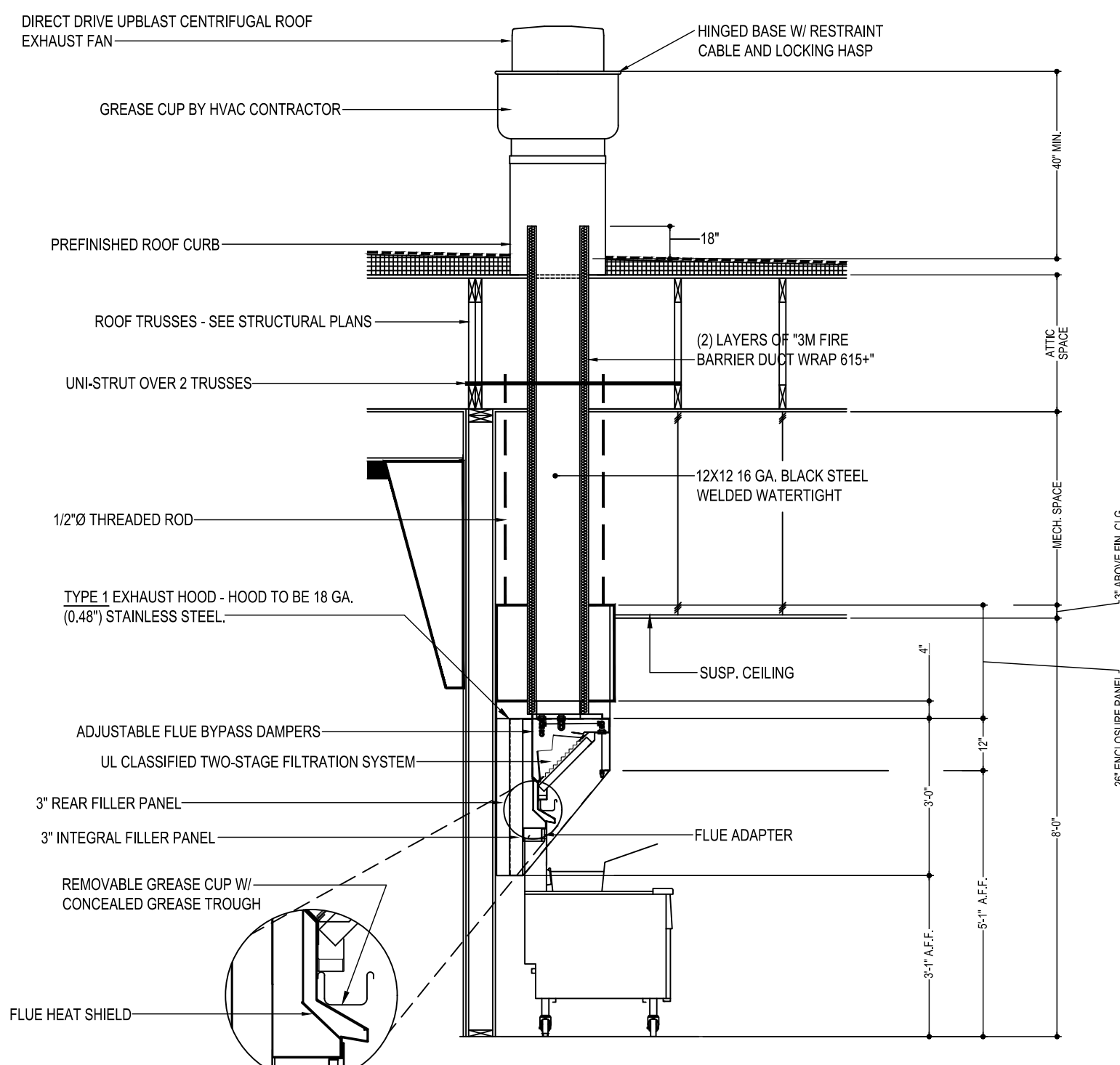
- ACCUREX WILL PROVIDE BALANCED AIRFLOW & FUNCTIONAL CHARACTERISTICS OF THE HVAC SYSTEM AS THEY RELATE TO AIRFLOW & AIR PRESSURE ONLY. SERVICES TO BE PERFORMED BY A CERTIFIED NEBB FIRM & ITS MANAGING GROUP NATIONAL TAB.
- SERVICES NOT INCLUDED: PULLEY / SHEAVE CHANGES, MOTOR CHANGE OUTS, OR RETURN TRIPS DUE TO DELAYS CAUSED BY JOB INCOMPLETENESS.
- ESTABLISH MINIMUM OUTSIDE AIR FLOW INDICATED ON SCHEDULES AT ALL SUPPLY FAN SPEEDS.

AIR BALANCE TABLE				
EXHAUST AIR FLOW				
EQUIPMENT TAG	SERVICE	CFM		
PRV-1	RESTROOMS	300		
PRV-2	ITEM #49	1,500		
PRV-3	ITEM #59	1,500		
EF-1A (x2)	MOP ROOM	150		
TOTAL =		3,450		
VENTILATION REQUIRED PER 2021 INTERNATIONAL MECHANICAL CODE				
EQUIPMENT TAG	SERVICE	CFM		
RTU-1	DINING ROOM	1,775		
RTU-2	KITCHEN	210		
TOTAL =		1,985		
3,450 > 1,985 -> USE 3,450 CFM FOR OUTSIDE AIR CFM				
OVERALL AIRFLOW SUMMARY				
EQUIPMENT TAG	SERVICE	SUPPLY CFM	RETURN CFM	OUTSIDE AIR CFM
RTU-1	DINING ROOM	6,150	4,400	1,750
RTU-2	KITCHEN	6,225	4,525	1,700
TOTAL OUTSIDE AIR CFM =		3,450		



## C6 BRANCH DUCT TAKEOFF DETAILS

SCALE: N.T.S.



## C3 KITCHEN HOOD EXHAUST DETAIL

SCALE: N.T.S.  
VERIFY MOUNTING HEIGHTS W/ OWNER AND GENERAL CONTRACTOR

## LENNOX SETTINGS FOR CULVERS

IN ORDER TO SET UP THE RTUS YOU WILL NEED TO DOWNLOAD LENNOX CORE SERVICE APP, AND PAIR YOUR DEVICE WITH THE CORE CONTROLLER. ONCE PAIRED YOU WILL SEE THE OPERATION OVERVIEW SCREEN. SEE INSTALLATION MANUAL FOR INSTRUCTIONS ON DOWNLOADING THE APP, OR SCAN THE QR CODE ON THE FRONT COVER OF THE CONTROLLER.

### HEAT DELAY ADJUSTMENT

- HEAT DELAY WILL BE PR68 IN THE CORE CONTROLLER AND CHANGED IN THE APP AS SHOWN IN THE MENU PATH BELOW. DEFAULT IS SET AT 3600 SECONDS.
- TAP THE MENU BUTTON, (THREE LINES IN THE UPPER LEFT OF THE SCREEN) TO OPEN THE MENU.
  - TAP SETUP
  - TAP TEST AND BALANCE
  - TAP DAMPER

### GLOBAL ECONOMIZER MODE (KITCHEN UNIT ONLY)

- THIS IS SET BY CHANGING CONFIGURATION ID#1 CHARACTER 2 TO G.
- FROM THE MAIN SCREEN (OPERATION OVERVIEW) TAP THE MENU BUTTON (THREE LINES IN THE UPPER LEFT OF THE SCREEN) TO OPEN THE MENU
  - TAP INSTALL
  - TAP NEXT ON DATE AND TIME
  - TAP NEXT ON RTU NAME, MODEL NUMBER, SERIAL NUMBER AND CATEGORY IF ALREADY ENTERED, IF NOT PLEASE ENTER
  - TAP CONFIGURATION ID 1 AND CHANGE 2ND CHARACTER TO G

### ECONOMIZER MINIMUM POSITION SET-UP

- THIS IS ADJUSTED THROUGH THE MENU FROM THE MAIN SCREEN
- TAP THE MENU BUTTON (THREE LINES IN THE UPPER LEFT OF THE SCREEN)
  - SCROLL DOWN AND TAP RTU OPTIONS
  - TAP EDIT PARAMETERS
  - CHOOSE FROM THE CATEGORY OF PARAMETERS LISTED (AIRFLOW)
  - CHOOSE THE PARAMETER TO ADJUST (132) MINIMUM FRESH AIR DAMPER POSITION DURING OCCUPIED OPERATION

### OCCUPIED AND UNOCCUPIED

- USING 24V THERMOSTAT CONTROL, OCCUPIED/ UNOCCUPIED WILL BE DETERMINED BY INPUT ON P297-8 ON THE IM BOARD
- FOR (KITCHEN UNIT ONLY) BOTH THE THERMOSTAT AND HOOD FANS MUST BE TIED INTO P297-8 ON THE IM CONTROL BOARD

### FRESH AIR TEMPERING (HEATING)

- THIS IS ADJUSTED THROUGH THE MENU FROM THE MAIN SCREEN
- TAP THE MENU BUTTON (THREE LINES IN THE UPPER LEFT OF THE SCREEN) TO OPEN THE MENU
  - TAP SETUP
  - TAP TEST AND BALANCE
  - TAP DAMPER
- THERE ARE SEVERAL SETTINGS TO SELECT IN THIS MENU PATH BEFORE REACHING THE DESIRED SETTING. FRESH AIR HEATING ENABLED -YES OR NO. AFTER ENABLING FAH THE NEXT SCREEN WILL ALLOW THE FAH SET POINT TO BE CONFIGURED. SUGGESTED FAH TEMPERATURE RANGES 65-67 DEGREES F. VERIFY WITH ENGINEER

### FRESH AIR TEMPERING (COOLING)

- THIS IS ADJUSTED THROUGH THE MENU FROM THE MAIN SCREEN
- TAP THE MENU BUTTON (THREE LINES IN THE UPPER LEFT OF THE SCREEN) TO OPEN THE MENU
  - TAP SETUP
  - TAP TEST AND BALANCE
  - TAP DAMPER
- THERE ARE SEVERAL SETTINGS TO SELECT IN THIS MENU PATH BEFORE REACHING THE DESIRED SETTING. FRESH AIR HEATING ENABLED -YES OR NO. AFTER ENABLING FAH THE NEXT SCREEN WILL ALLOW THE FAH SET POINT TO BE CONFIGURED. SUGGESTED FAH TEMPERATURE RANGES 73-75 DEGREES F. VERIFY WITH ENGINEER

ENSURE THAT THE PROBE STYLE SENSOR GETS INSTALLED IN THE SUPPLY DUCTWORK FOR FAHFAC TO OPERATE PROPERLY.

FOR HELP PLEASE CALL LENNOX NATIONAL ACCOUNT TECH SUPPORT AT 1-800-367-6285

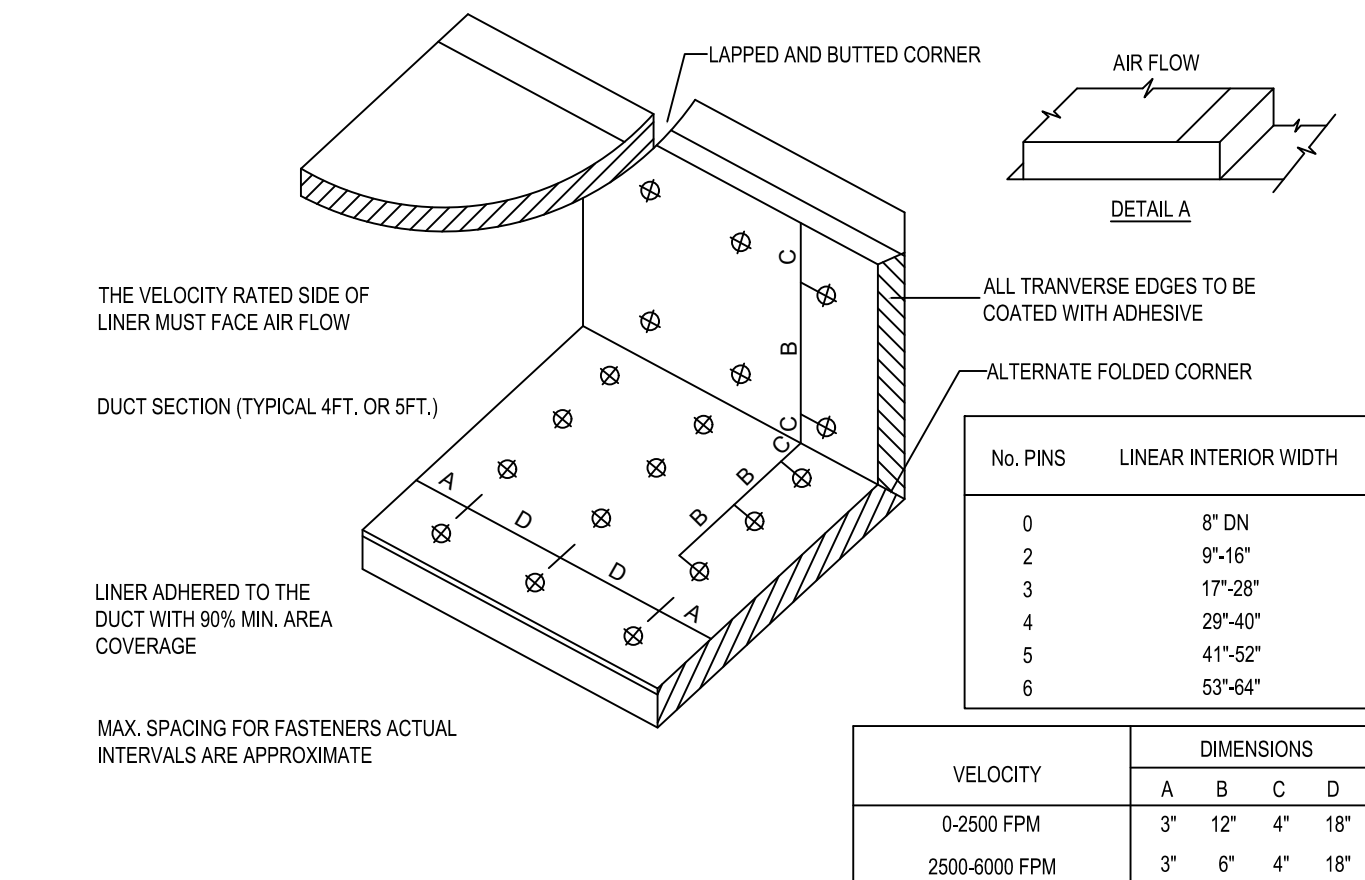
CHECK FOR CORRECT OPERATION AND WIRING OF ALL SENSORS

## COOKING APPLIANCE / TYPE 1 HOOD INTERLOCK

- REMOTE SWITCH ON - POWER TO KITCHEN FAN CONTROL CENTER (KFCC)
- KFCC CONTROLS:
  - EXHAUST FANS PRV-2 (GRILLE) & PRV-3 (FRYERS) ARE STARTED.
  - OPENS OUTSIDE AIR INTAKE ON RTU-1 & RTU-2 TO MINIMUM FRESH AIR OPENING.
  - POWER TO OUTLETS #51 (GRILLE) & #60 (FRYERS).
- GRILLE & FRYER CAN BE STARTED.
- IN CASE OF FIRE:
  - SHUNT TRIP BREAK FOR GRILLE & FRYERS OUTLET TRIPS.
  - ANSUL SYSTEM IS ACTIVATED.
  - THE MECHANICAL GAS VALVES CLOSES.
  - SHUT DOWN RTU-1 & RTU-2 & CLOSE OUTSIDE AIR.
  - EXHAUST FANS PRV-2 & PRV-3 CONTINUE TO RUN.

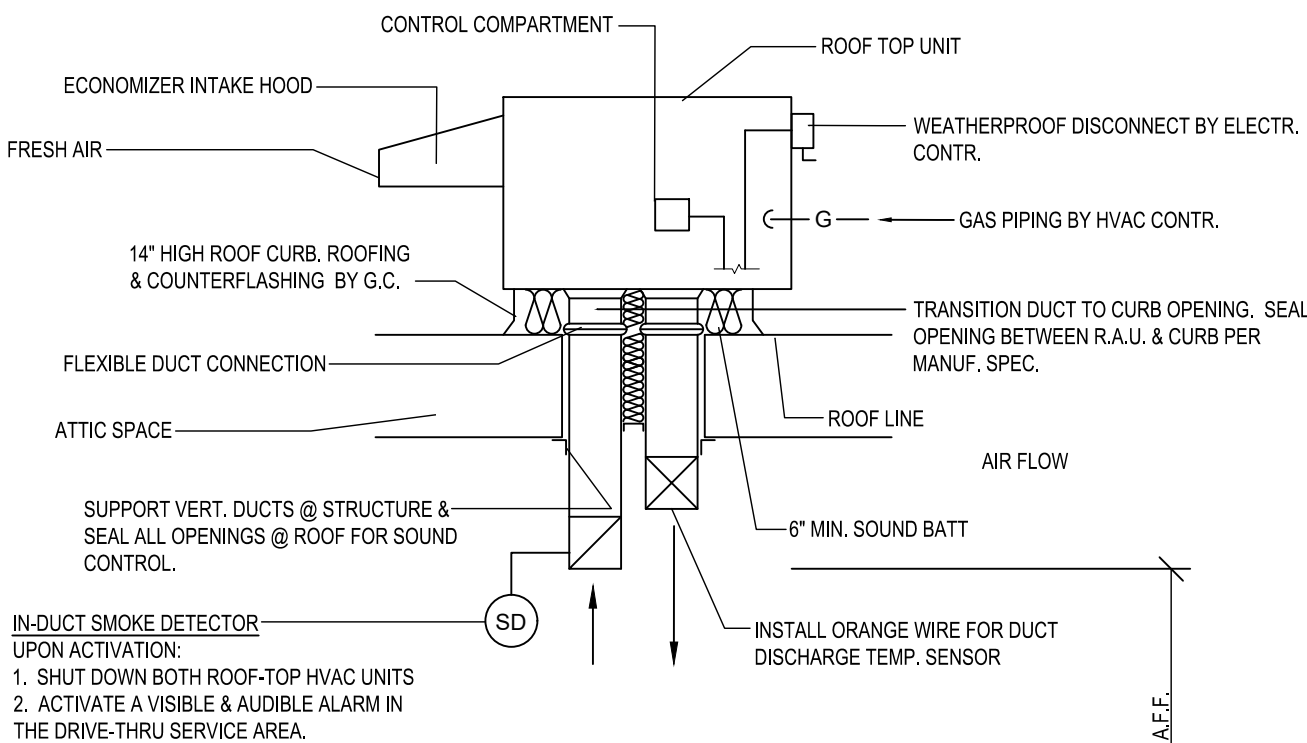
## GREASE HOOD FIRE SUPPRESSION SYSTEM

WET-CHEMICAL EXTINGUISHING SYSTEMS SHALL BE INSTALLED, MAINTAINED, PERIODICALLY INSPECTED AND TESTED IN ACCORDANCE WITH NFPA 17A AND THEIR LISTING.



## E5 DUCT LINER INSTALLATION DETAIL

SCALE: N.T.S.  
NOTE: USE ONLY ON VERTICAL DROP FROM RTU TO WITHIN 9'-10" A.F.F.  
DUCT LINER WILL NOT BE PERMITTED ON ANY HORIZ. RUNS.



## A6 ROOFTOP HVAC UNIT

SCALE: N.T.S.

NEW CULVER'S RESTAURANT  
2061 N IL Route 50  
Bourbonnais, IL 60914  
County of KANKAKEE

OWNER:  
RAR OF ROMEVILLE, LLC  
400 E Summit Avenue  
Wales, WI 53183  
Tony Milazzo  
262-751-5381

OLLMANN ERNEST MARTIN ARCHITECTS  
200 South State Street  
Belvidere Illinois 61008  
815-544-7790 Phone  
© OEMA. All rights reserved. Any copying, transmission or disclosure subject to OEMA written approval.

HVAC SCHEDULE & DETAILS

2024-082

M201

Date: 8-29-2024

Revision:

CONSTRUCTION SET 12-5-2024

**HOOD INFORMATION**

HOOD NO.	MARK	MODEL	HOOD DIMENSIONS (IN.)			HOOD CONSTR.	COOKING LOAD / DUTY RATING	TOTAL CFM	EXHAUST COLLAR(S)					MUA CFM	AC CFM	TOTAL WEIGHT LBS.	SECTION LOCATION
			LENGTH	WIDTH	HEIGHT				WIDTH	LENGTH	DIA.	CFM	S.P.				
1	GRIDDLE HOOD	XGEP-64-S	64	TOP 23 BOT 8	FRT 12 BACK 36	430 SS WHERE EXPOSED	MEDIUM	1500	12	12		1500	1.918			137	SINGLE

**HOOD INFORMATION**

HOOD NO.	MARK	LIGHTING DETAILS			GREASE FILTRATION DETAILS			UTILITY CABINET(S)						
		FIXTURE TYPE	BULB / LAMP INFO	QTY	FOOT CANDLES	TYPE / MODEL	MATERIAL	QTY	SIZE (IN.)	LOCATION	FIRE SYSTEM TYPE	SIZE	MODEL	CONTROLS INTERFACE
1	GRIDDLE HOOD					GREASE GRABBER	STAINLESS STEEL	4	16	16				

**HOOD OPTIONS**

UL 710 LISTED W/ OUT EXHAUST FIRE DAMPER - UL #R25625  
 BACK NON-INTEGRAL AIR SPACE - 3 IN WIDE  
 26 IN HIGH CEILING ENCLOSURES - FRONT LEFT RIGHT - FIELD INSTALLED  
 FACTORY MOUNTED EXHAUST COLLAR(S)  
 PERFORMANCE ENHANCING LIP (PEL) TECHNOLOGY  
 STANDING SEAM CONSTRUCTION FOR SUPERIOR STRENGTH

**SPECIAL DESIGN REQUESTS**

SDR #K1100145 - FLUE BYPASS HOOD  
 SDR #K1800144 - CULVERS 4VAT 2FIRE PROCESS - GRIDDLE HOOD

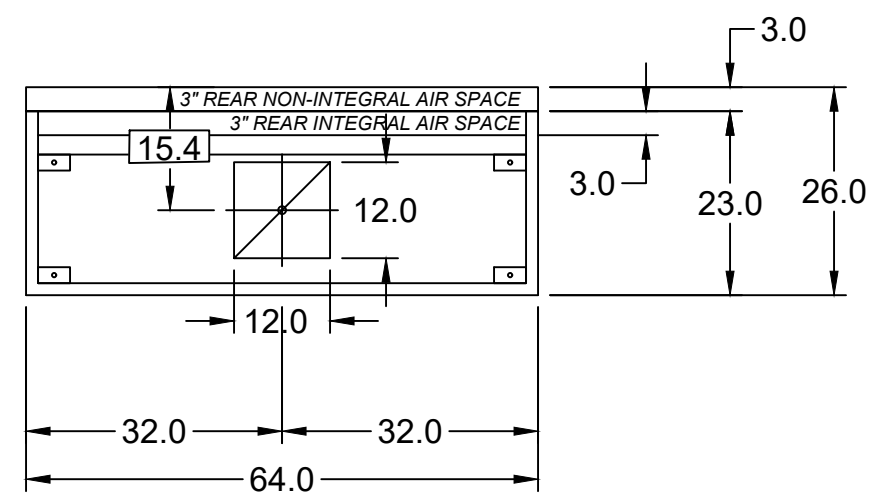
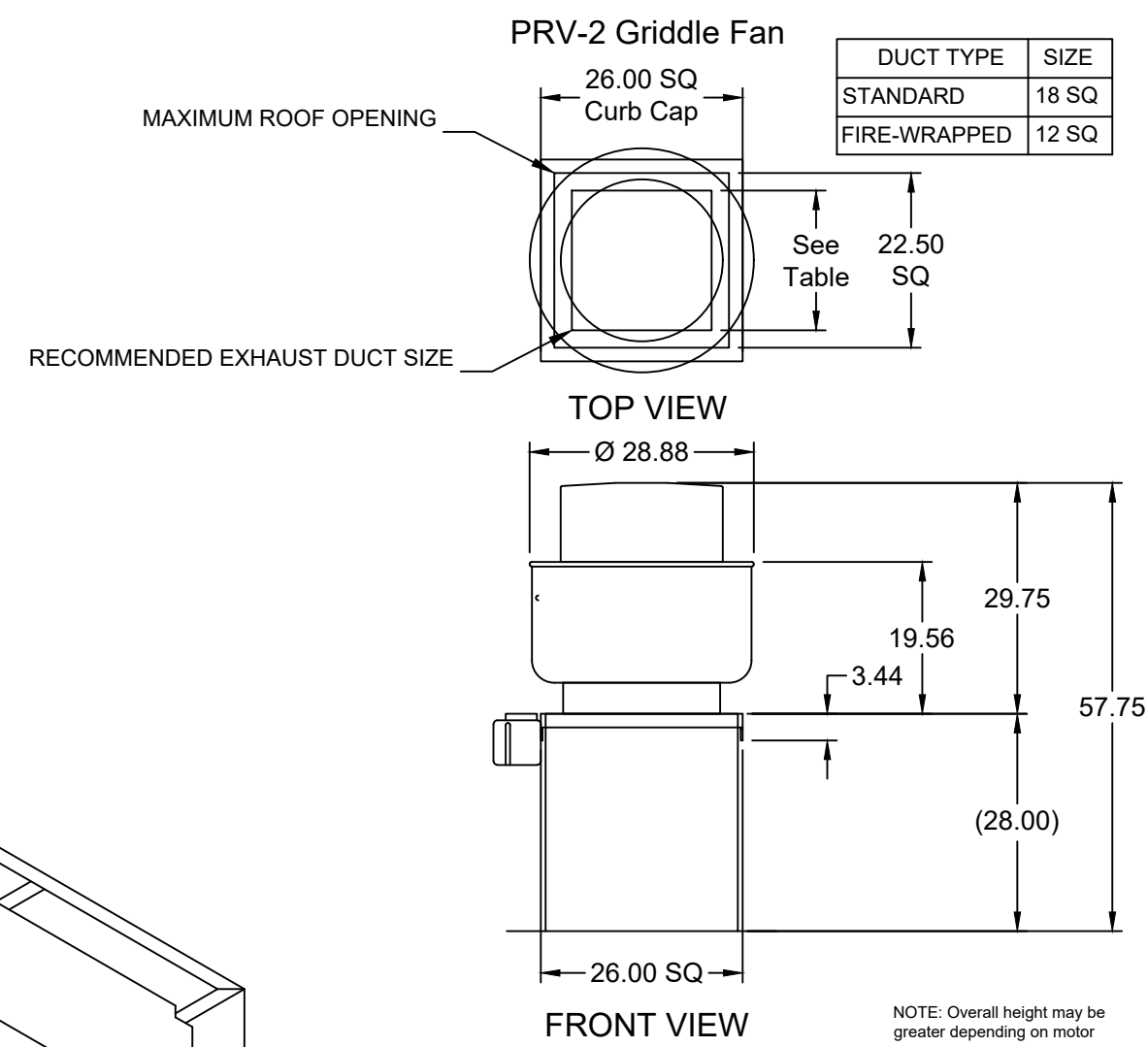
**Direct Drive Upblast Centrifugal Roof Exhaust Fan**

MARK INFORMATION		FAN INFORMATION					MOTOR INFORMATION						
QTY	MARK	MODEL	VOLUME (CFM)	TOTAL EXTERNAL SP (IN WG)	FAN RPM	OPERATING POWER (HP)	WEIGHT (LB.)	SIZE (HP)	V/C/P	ENCLOSURE	MOTOR RPM	WINDINGS	NEC FLA*
1	PRV-2 Griddle Fan	XCUE-140-VG	1,500	1.801	1,725	0.83	92	1	115/60/1	OP	1725	1	16

\*NEC FLA - Based on table 430.250 or 430.248 of National Electrical Code 2020. Actual motor FLA may vary for sizing thermal overload, consult factory"

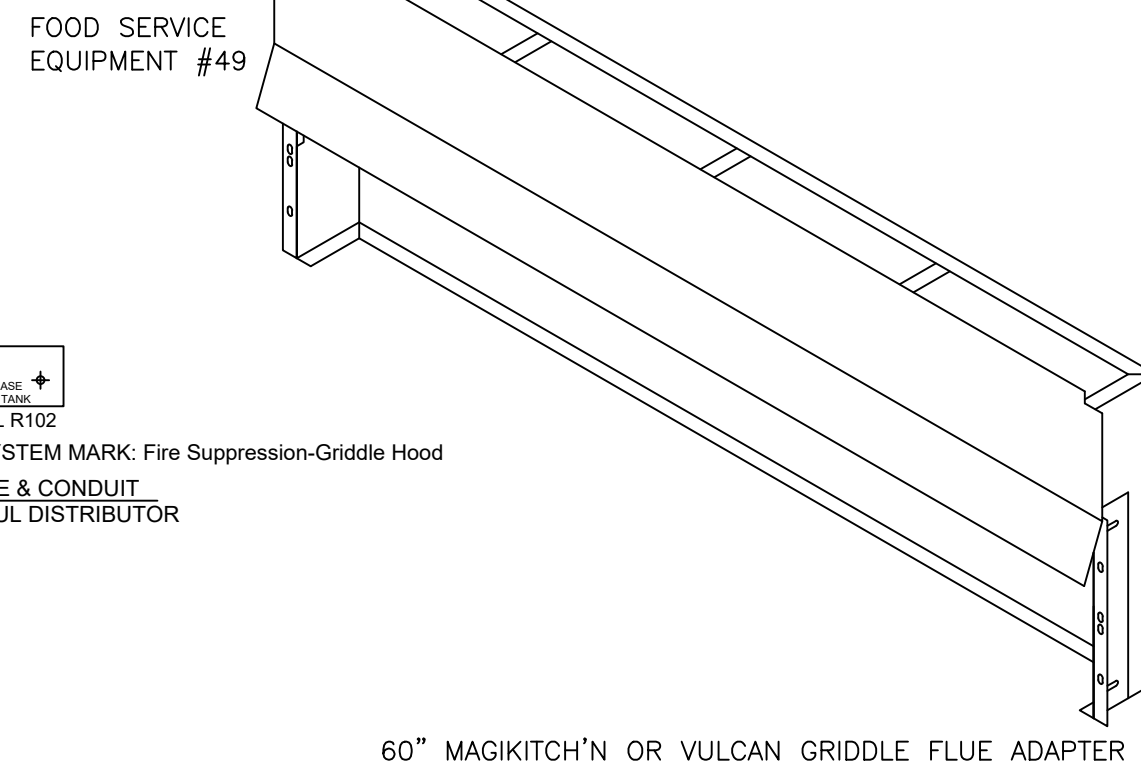
**PRV-2 Griddle Fan : SELECTED OPTIONS AND ACCESSORIES**

One piece fully welded windband  
 Tapered bushing wheel hub  
 Breather tube outlet area min. 4.4 sq. in. (sizes 99-480), 2.0 sq. in. (sizes 60-95)  
 Min. windband material thickness: 0.051" aluminum (060-240), 0.064" aluminum (240HP, 240XP), 0.080" aluminum (sizes 300-480)  
 Larger Curb Cap Size - 26 Square  
 UL/cUL 705 Listed - Supplement SC - "Power Ventilators for Restaurant Exh. Appliances" (Formerly UL 762)  
 Switch, NEMA-3R, Toggle,  
 Hinge, Factory Installed  
 High Temp Curb Seal Rated for Continuous Duty at 1500 F (Factory Attached)  
 Grease Trap (PN 475538)  
 Clean-out Port - Factory Installed  
 Conduit Chase Qty 1

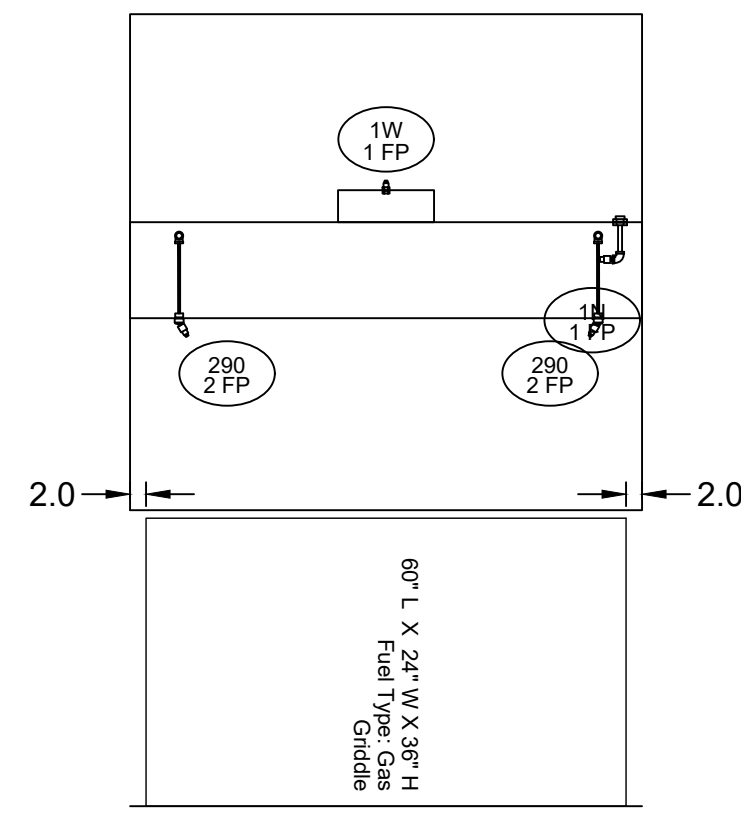


MARK: Griddle Hood - SECTION 1 PLAN VIEW

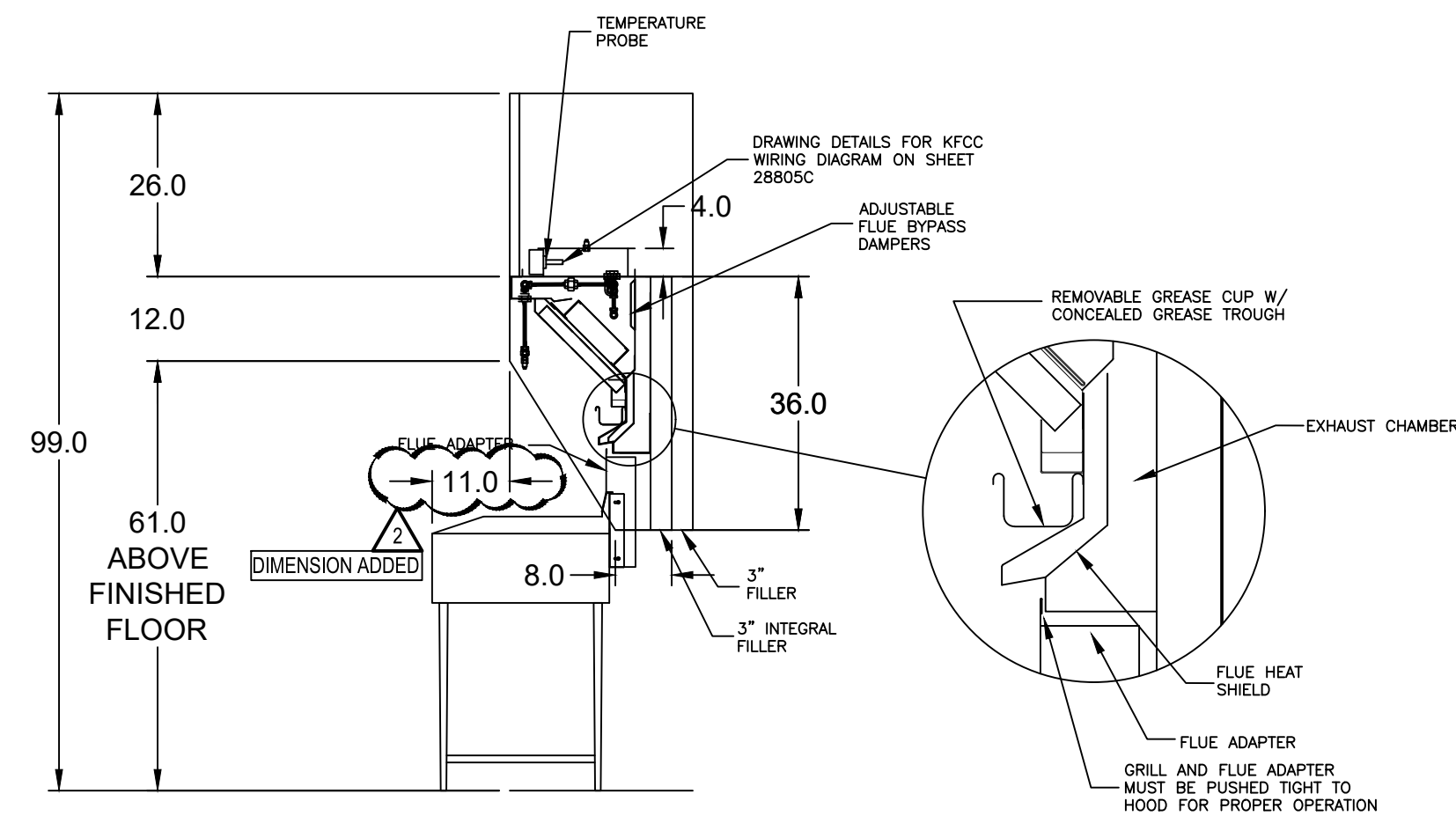
MUST USE WITH MAGIKITCH'N MODEL MKG-C-60 OR VULCAN MODEL VIG60-R3



60" MAGIKITCH'N OR VULCAN GRIDDLE FLUE ADAPTER



SECTION 1 ELEVATION VIEW



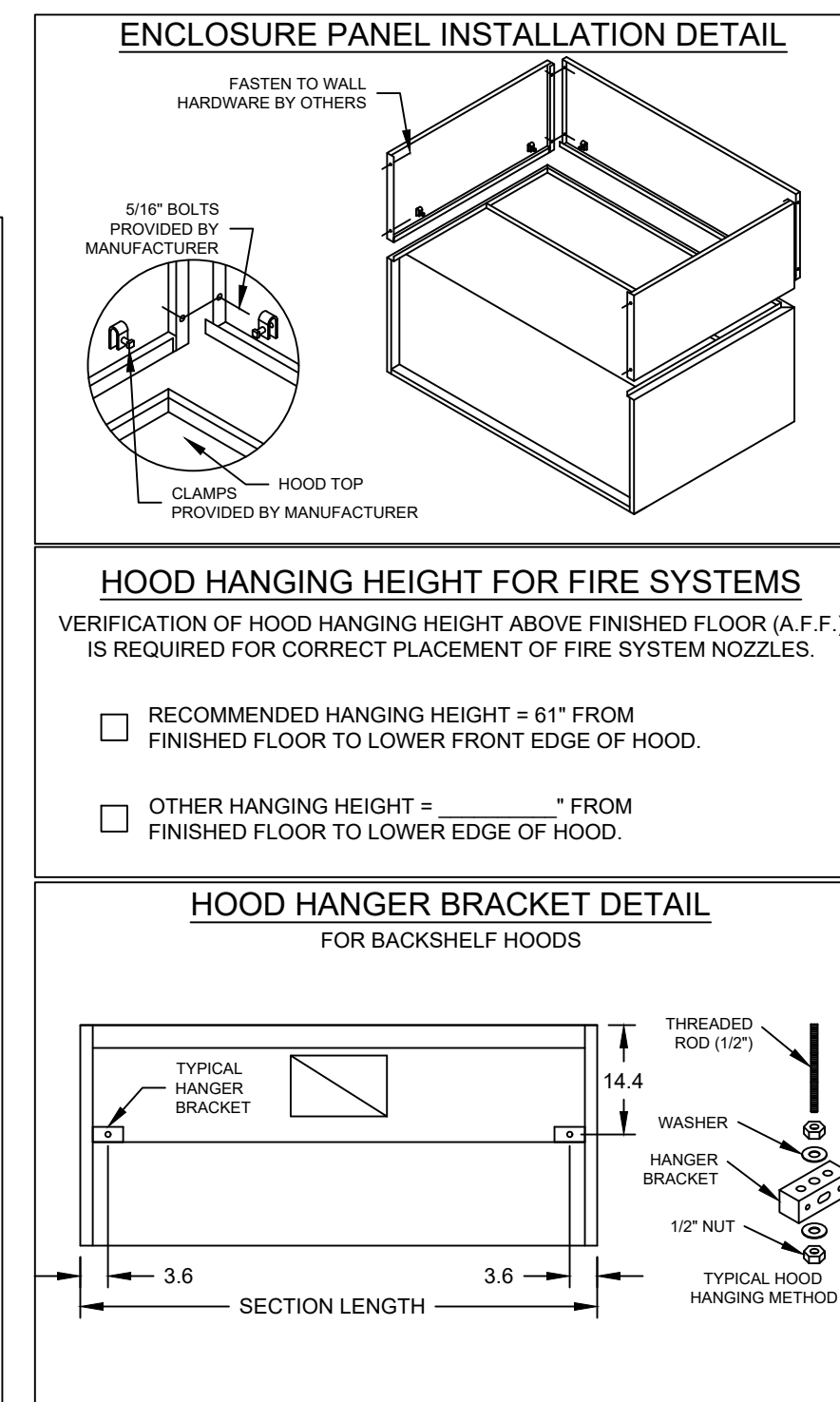
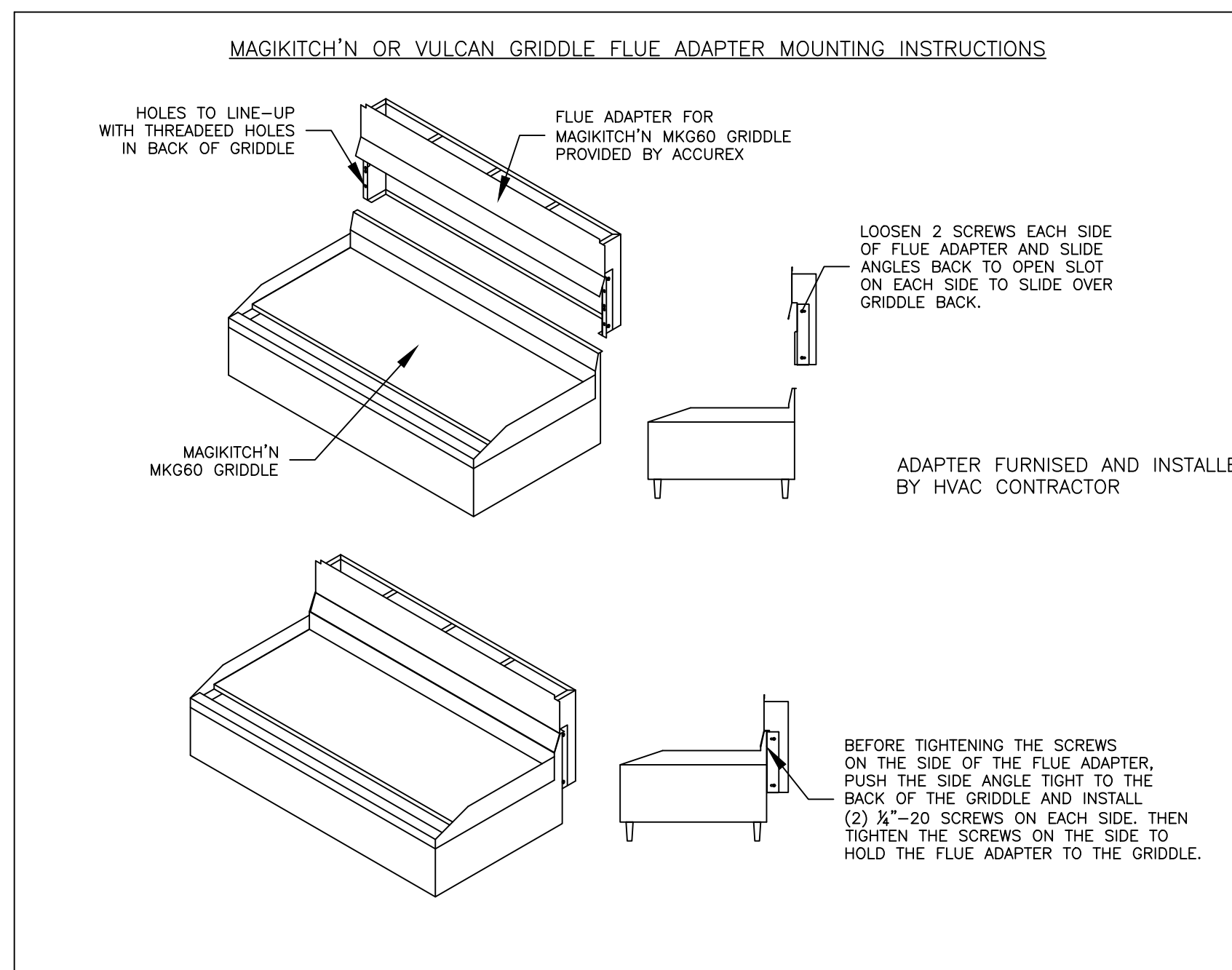
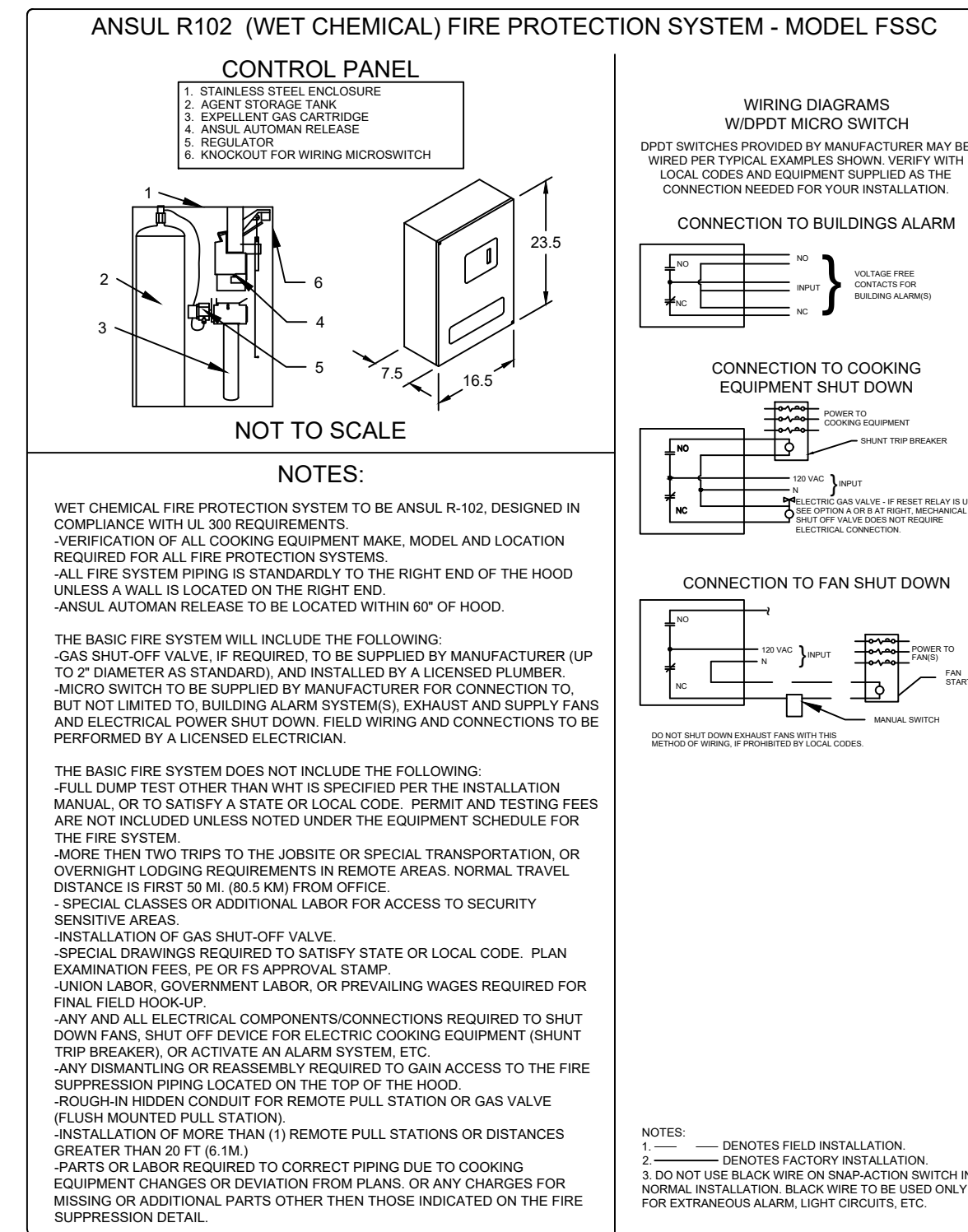
MARK: Griddle Hood SECTION VIEW

**FIRE SYSTEM INFORMATION**

MARK	MODEL	LOCATION	FLOW POINTS		SUPPLY LINE	DETECTION	MARK(S) PROTECTED BY FIRE SYSTEM
			HOODS	PCU			
FIRE SUPPRESSION-GRIDDLE HOOD	ANSUL R-102 WET CHEMICAL	REMOTE MOUNTED	6 UTILIZED	11 AVAILABLE	CONTINUOUS	FUSIBLE LINK	GRIDDLE HOOD SECTION 1

**FIRE SYSTEM OPTIONS AND ACCESSORIES**

FULL INSTALLATION (INCLUDES PRE-PIPED HOOD(S) WITH DETECTION AND FACTORY COORDINATED INSTALL)  
 CHROME SLEEVES FOR FACTORY PROVIDED APPLIANCES DROPS - INCLUDED  
 METAL BLOW-OFF CAPS - INCLUDED  
 HOOD SUPPRESSION AGENT - INCLUDED - 3 GAL. - ((1) 3.0 TANK(S))  
 REMOTE PULL STATION - STANDARD - INSTALLATION AT SINGLE POINT OF EGRESS

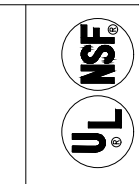


**ACCUREX**

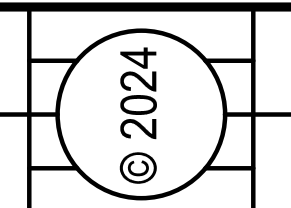
CULVERS - METRO L 2021 (S)

PROJECT 8/28/2024

ACCUREX - WI, IA  
 PHILLIP KRAFT  
 PHILLIP.KRAFT@ACCUREX.COM  
 262-227-7865



GRIDDLE HOOD  
 PRV-2 GRIDDLE FAN  
 FIRE SUPPRESSION-GRIDDLE HOOD

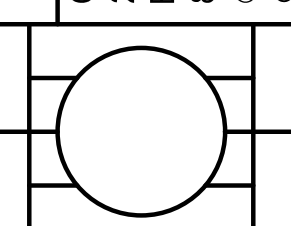


NEW CULVER'S RESTAURANT  
 2061 N IL Route 50  
 Bourbonnais, IL 60914  
 County of KANKAKEE



OWNER:  
 RAR OF ROMEVILLE, LLC  
 400 E Summit Avenue  
 Wales, WI 53183  
 Tony Milazzo  
 262-751-5381

OWNER:  
 OLLMANN ERNEST MARTIN ARCHITECTS  
 200 South State Street  
 Belvidere Illinois 61008  
 815-544-7190 Phone  
 © OEMA. All rights reserved. Any copying, transmission or disclosure subject to OEMA written approval.



GRIDDLE HOOD/EXHAUST  
 SCHEDULE & DETAILS  
 Date: 8-29-2024  
 Revision: 10-10-2024  
 2024-082  
 M202

CONSTRUCTION SET 12-5-2024

HOOD INFORMATION

HOOD NO.	MARK	MODEL	HOOD DIMENSIONS (IN.)			HOOD CONSTR.	COOKING LOAD / DUTY RATING	EXHAUST					SUPPLY		TOTAL WEIGHT LBS.	SECTION LOCATION	
			LENGTH	WIDTH	HEIGHT			TOTAL CFM	COLLAR(S) WIDTH	COLLAR(S) LENGTH	COLLAR(S) DIA.	CFM	S.P.	MUA CFM			AC CFM
1	FRYER HOOD	XXEP-83-S	83	TOP 23 BOT 3	FRT 12 BACK 36	430 SS W/HERE EXPOSED	MEDIUM	1500	12	12		1500	0.518			169	SINGLE

HOOD INFORMATION

HOOD NO.	MARK	LIGHTING DETAILS			GREASE FILTRATION DETAILS			UTILITY CABINET(S)				
		FIXTURE TYPE	QTY	FOOT CANDLES	TYPE / MODEL	QTY	SIZE (IN.)	LOCATION	FIRE SYSTEM TYPE	SIZE	MODEL	CONTROLS INTERFACE
1	FRYER HOOD				X-TRACTOR (SPARK ARRESTOR INCL.)	5	16					
					STAINLESS STEEL	0	20					

HOOD OPTIONS

UL 710 LISTED W/ OUT EXHAUST FIRE DAMPER - UL #R25625  
 BACK NON-INTEGRAL AIR SPACE - 3 IN WIDE  
 26 IN HIGH CEILING ENCLOSURES - FRONT LEFT RIGHT - FIELD INSTALLED  
 FACTORY MOUNTED EXHAUST COLLAR(S)  
 PERFORMANCE ENHANCING LIP (PEL) TECHNOLOGY  
 STANDING SEAM CONSTRUCTION FOR SUPERIOR STRENGTH

SPECIAL DESIGN REQUESTS

SDR #K1100559 - NEW PITCO 4L FRYER FLUE BYPASS SYSTEM  
 SDR #K1700974 - CULVERS 4VAT 2FIRE PROCESS - FRYER HOOD  
 SDR #K2000140 - IF FRYMASTER FRYER FLUE BYPASS

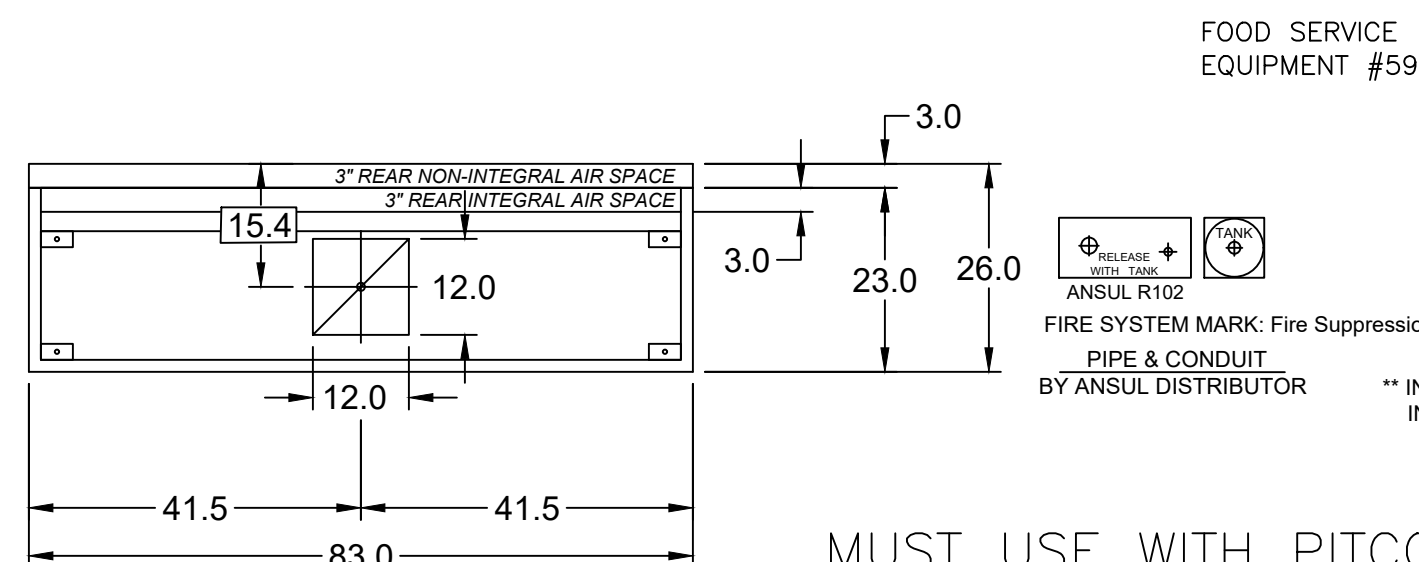
Direct Drive Upblast Centrifugal Roof Exhaust Fan

MARK INFORMATION		FAN INFORMATION				MOTOR INFORMATION							
QTY	MARK	MODEL	VOLUME (CFM)	TOTAL EXTERNAL SP (IN WG)	FAN RPM	OPERATING POWER (HP)	WEIGHT (LB.)	SIZE (HP)	V/C/P	ENCLOSURE	MOTOR RPM	WINDINGS	NEC FLA*
1	PRV-3 Fryer Fan	XCUE-140-VG	1,500	1	1,365	0.46	92	1	115/60/1	OP	1725	1	16

\*NEC FLA - Based on table 430.250 or 430.248 of National Electrical Code 2020. Actual motor FLA may vary for sizing thermal overload, consult factory"

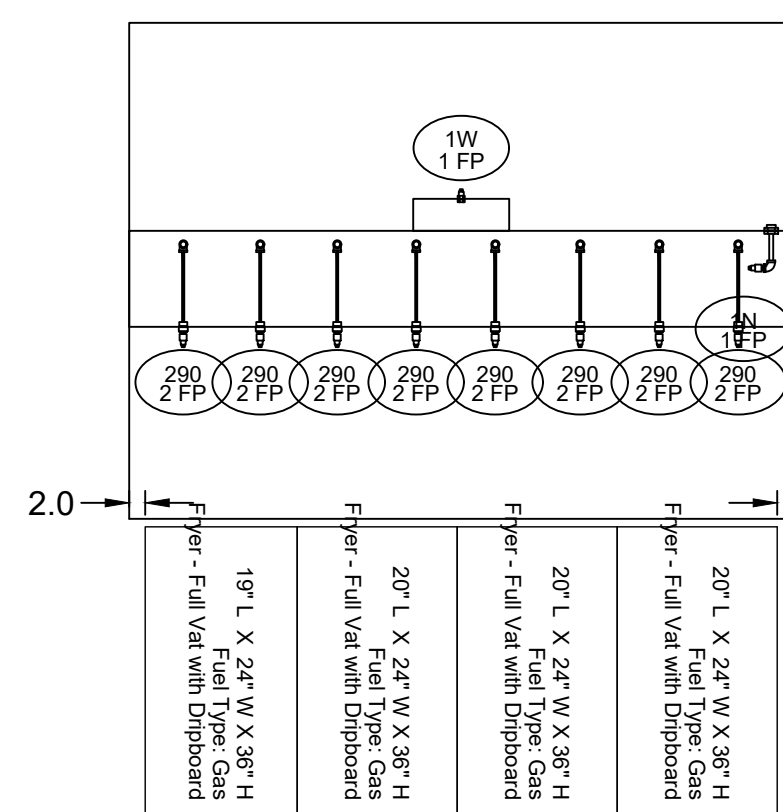
PRV-3 Fryer Fan : SELECTED OPTIONS AND ACCESSORIES

One piece fully welded windband  
 Tapered bushing wheel hub  
 Breather tube outlet area min. 4.4 sq. in. (sizes 99-480), 2.0 sq. in. (sizes 60-95)  
 Min. windband material thickness: 0.051" aluminum (060-240), 0.064" aluminum (240HP, 240XP), 0.080" aluminum (sizes 300-480)  
 Larger Curb Cap Size - 26 Square  
 UL/cUL 705 Listed - Supplement SC - "Power Ventilators for Restaurant Exh. Appliances" (Formerly UL 762)  
 Switch, NEMA-3R, Toggle,  
 Hinge, Factory Installed  
 High Temp Curb Seal Rated for Continuous Duty at 1500 F (Factory Attached)  
 Grease Trap (PN 475538)  
 Clean-out Port - Factory Installed  
 Conduit Chase Qty 1

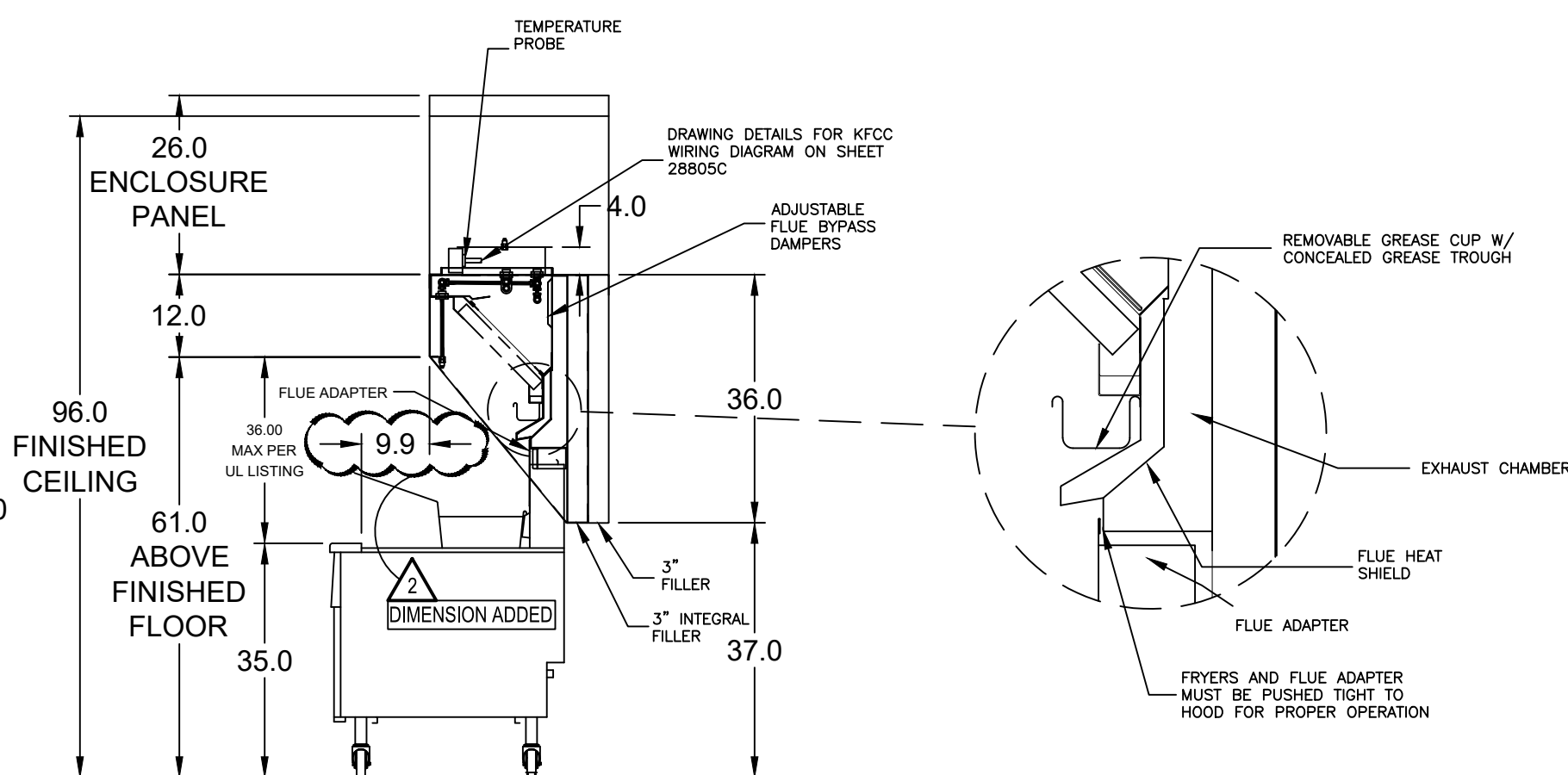


MARK: Fryer Hood  
PLAN VIEW

MUST USE WITH PITCO  
 MODEL CU-SSH60W/WR 4VAT FRYER  
 IF FRYMASTER MODEL 41814GF-CFS  
 IS BEING USED, NOTIFY ACCUREX REP



SECTION 1  
ELEVATION VIEW



MARK: ITEM #59  
SECTION VIEW

FIRE SYSTEM INFORMATION

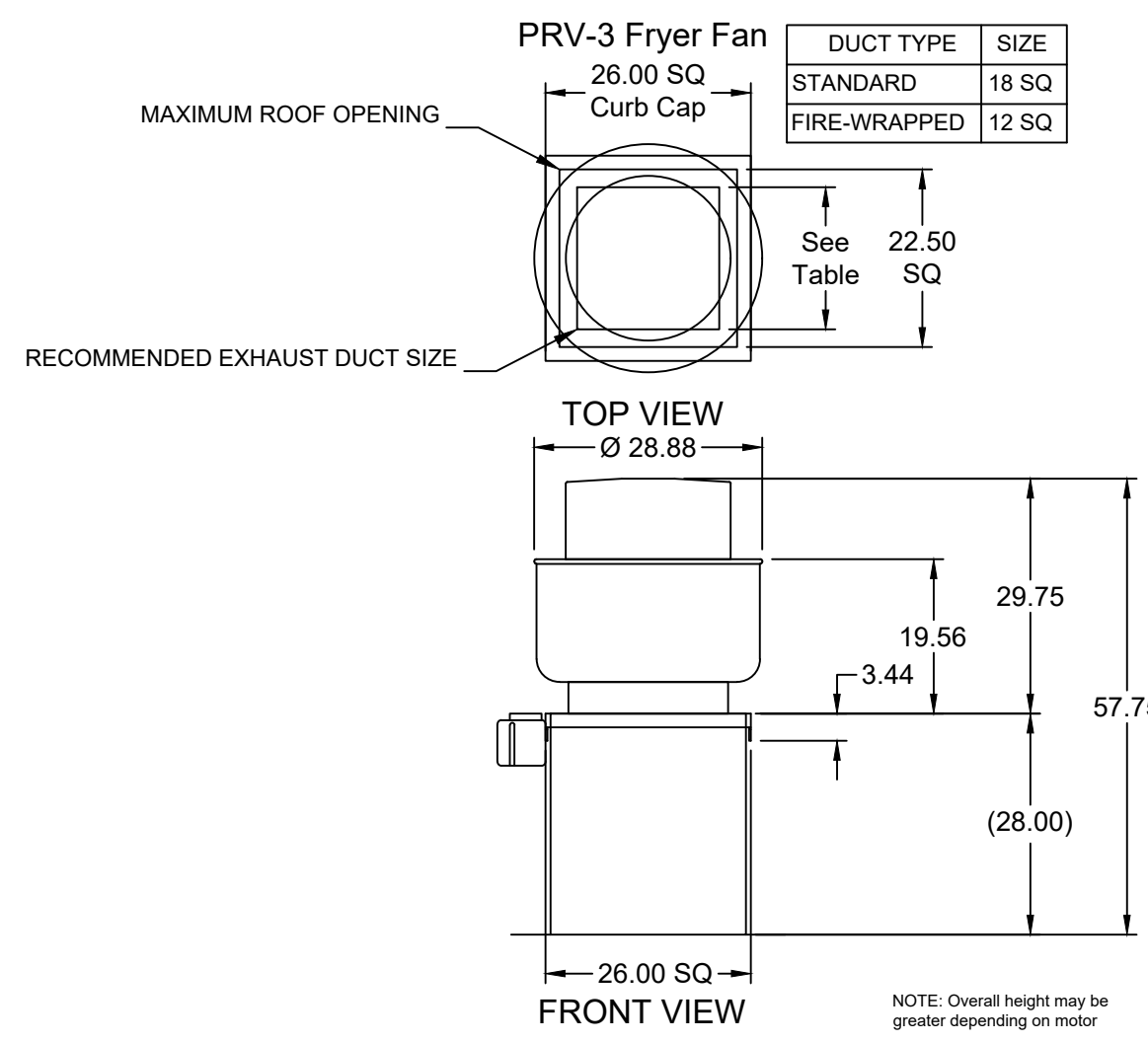
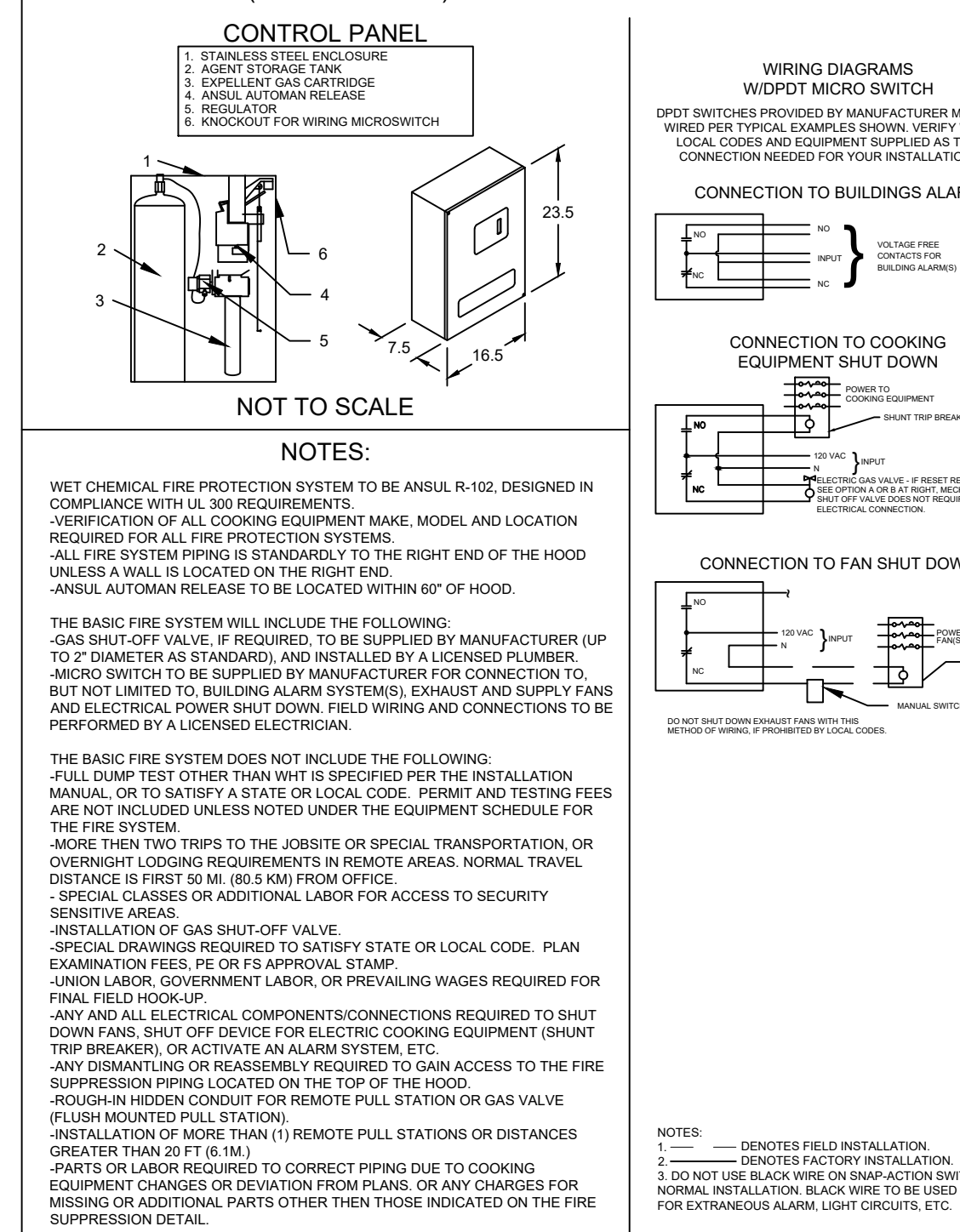
MARK	MODEL	LOCATION	FLOW POINTS		SUPPLY LINE	DETECTION	MARK(S) PROTECTED BY FIRE SYSTEM
			HOODS	PCU			
FIRE SUPPRESSION-FRYER HOOD	ANSUL R-102 WET CHEMICAL	REMOTE MOUNTED	18 UTILIZED	22 AVAILABLE	CONTINUOUS	FUSIBLE LINK	FRYER HOOD SECTION 1

FIRE SYSTEM OPTIONS AND ACCESSORIES

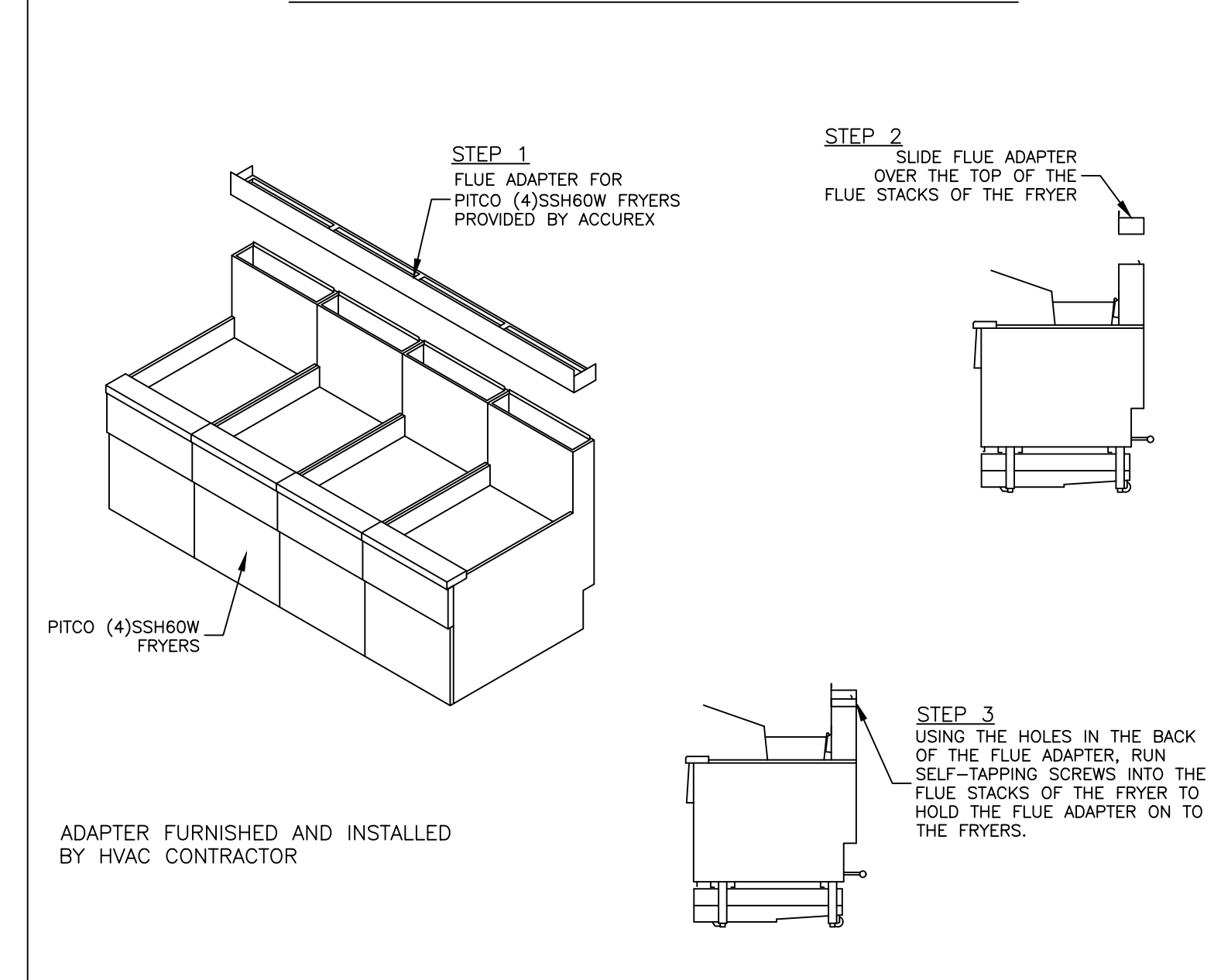
FULL INSTALLATION (INCLUDES PRE-PIPED HOOD(S) WITH DETECTION AND FACTORY COORDINATED INSTALL)  
 CHROME SLEEVES FOR FACTORY PROVIDED APPLIANCES DROPS - INCLUDED  
 METAL BLOW-OFF CAPS - INCLUDED  
 PRE-TEST - INCLUDED

HOOD SUPPRESSION AGENT - INCLUDED - 6 GAL. - [(2) 3.0 TANK(S)]  
 REMOTE PULL STATION - STANDARD - INSTALLATION AT SINGLE POINT OF EGRESS

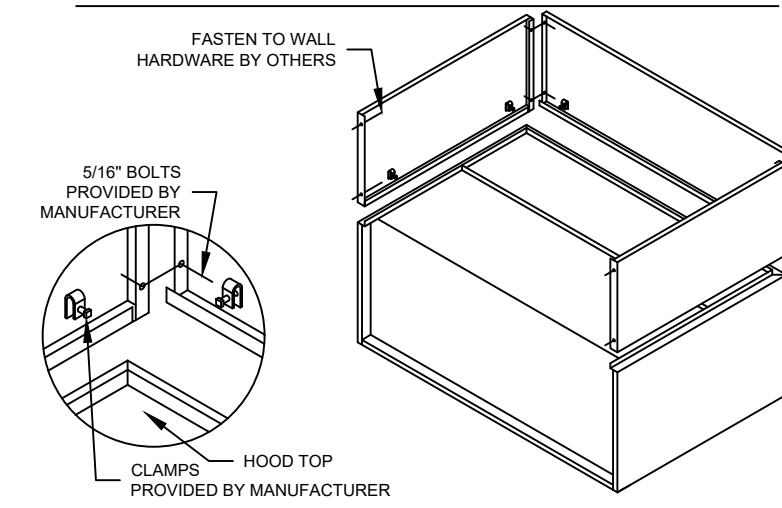
ANSUL R102 (WET CHEMICAL) FIRE PROTECTION SYSTEM - MODEL FSSC



PITCO OR FRYMASTER FLUE ADAPTER MOUNTING INSTRUCTIONS



ENCLOSURE PANEL INSTALLATION DETAIL

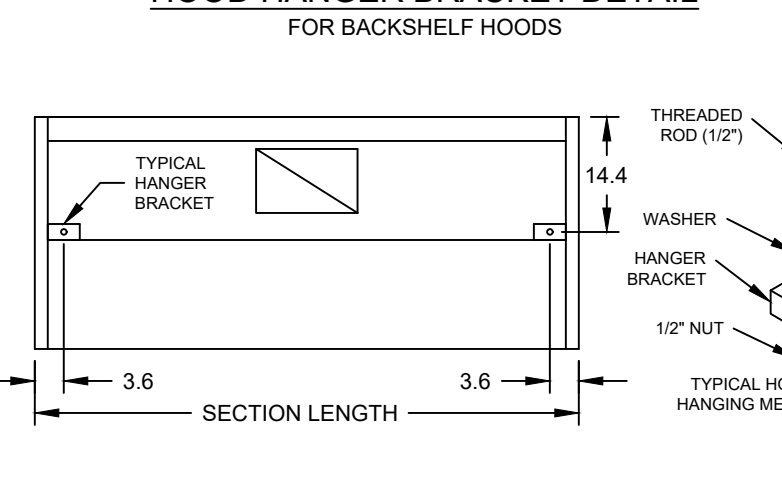


HOOD HANGING HEIGHT FOR FIRE SYSTEMS

VERIFICATION OF HOOD HANGING HEIGHT ABOVE FINISHED FLOOR (A.F.F.) IS REQUIRED FOR CORRECT PLACEMENT OF FIRE SYSTEM NOZZLES.

- RECOMMENDED HANGING HEIGHT = 61" FROM FINISHED FLOOR TO LOWER FRONT EDGE OF HOOD.
- OTHER HANGING HEIGHT = \* FROM FINISHED FLOOR TO LOWER EDGE OF HOOD.

HOOD HANGER BRACKET DETAIL FOR BACKSHELF HOODS



ACCUREX

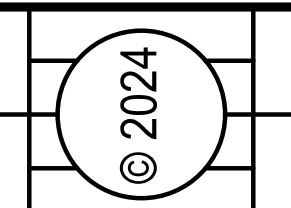
CULVERS - METRO L 2021 (S)

PROJECT/ 8/28/2024

ACCUREX - WI, IA  
 PHILLIP KRAFT  
 PHILLIP.KRAFT@ACCUREX.COM  
 262-227-7865

FRYER HOOD  
 PRV-3 FRYER FAN  
 FIRE SUPPRESSION-FRYER HOOD

MARK

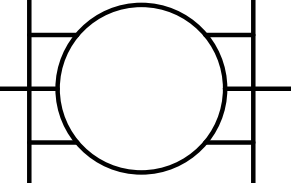


NEW CULVER'S RESTAURANT  
 2061 N IL Route 50  
 Bourbonnais, IL 60914  
 County of KANKAKEE



Culver Franchising System, Inc.  
 1240 Water Street  
 Prairie du Sac, WI 53578  
 608-843-7880

OWNER:  
 RAR OF ROMEVILLE, LLC  
 400 E Summit Avenue  
 Wales, WI 53183  
 Tony Milazzo  
 262-751-5381



OLLMANN ERNEST MARTIN ARCHITECTS  
 200 South State Street  
 Belvidere Illinois 61008  
 815-544-7190 Phone  
 © OEMA. All rights reserved. Any copying, transmission or disclosure subject to OEMA written approval.

FRYER HOOD/EXHAUST  
 SCHEDULE & DETAILS

2024-082

M203

CONSTRUCTION SET 12-5-2024

Date: 8-29-2024  
 Revision: 10-10-2024

**Ceiling Exhaust Fan**

MARK INFORMATION		FAN INFORMATION						MOTOR INFORMATION				
QTY	MARK	MODEL	VOLUME (CFM)	TOTAL EXTERNAL SP (IN WG)	FAN RPM	OPERATING POWER (HP)	WEIGHT (LB.)	SIZE (HP)	V/C/P	ENCLOSURE	MOTOR RPM	WINDINGS
2	EF-1A	XCR-B80	75	0.125	881	0.01	10	0	115/60/1	OP	900	1

**EF-1A : SELECTED OPTIONS AND ACCESSORIES**

UL/cUL 507 Listed - Electric Fan  
 Solid State Speed Control, 6 Amp, Mounted and Wired Internally  
 Round Hooded Wall Cap, (PN: WC-6) Shipped Loose  
 Round Duct Connection  
 Adjustable easy installation mounting bracket  
 Standard Grille  
 Polypropylene Wheel Material  
 Can Be Used to Comply with: ASHRAE 62.2 and Washington State Energy Code

**SPECIAL DESIGN REQUESTS**  
 (1)-WC-4 Wall Cap (F1600858)

**CONTROL INFORMATION**

MARK	ELECTRICAL CONTROL PACKAGE		USER INTERFACE	
	MODEL	LOCATION	TYPE	LOCATION
CONTROLS	XKC-CV-S-22-2-1-0	SHIP LOOSE ENCLOSURE	FULL COLOR TOUCHSCREEN	SHIP LOOSE

FANS CONTROLLED											
FAN #	TYPE	FAN	FAN MARK	ZONE	CFM	MOTOR HP	MOTOR VOLT	CYCLE	MOTOR PHASE	MOTOR STARTER IN PANEL	VFD IN PANEL
1	SUPPLY	S1	RTU-1	1	1500	1	208	60	3	NO	NO
2	SUPPLY	S2	RTU-2	2	1500	1	208	60	3	NO	NO
3	EXHAUST	E1	PRV-2 GRIDDLE FAN	2	1497	1	115	60	1	NO	NO
4	EXHAUST	E2	PRV-3 FRYER FAN	1	1500	1	115	60	1	NO	NO

**CONTROL FEATURES**  
 TEMP SENSORS (FACTORY INSTALLED) - QTY. 2  
 DRY FIRE CONTACTS - QTY. 2  
 EXHAUST MAX DURING FIRE  
 SUPPLY OFF DURING FIRE

**SPECIAL DESIGN REQUESTS**  
 SDR #K2000462 - CULVERS CONTROL PANEL - EXTRA SET OF FIRE CONTACTS - REVISE WIRING DIAGRAMS

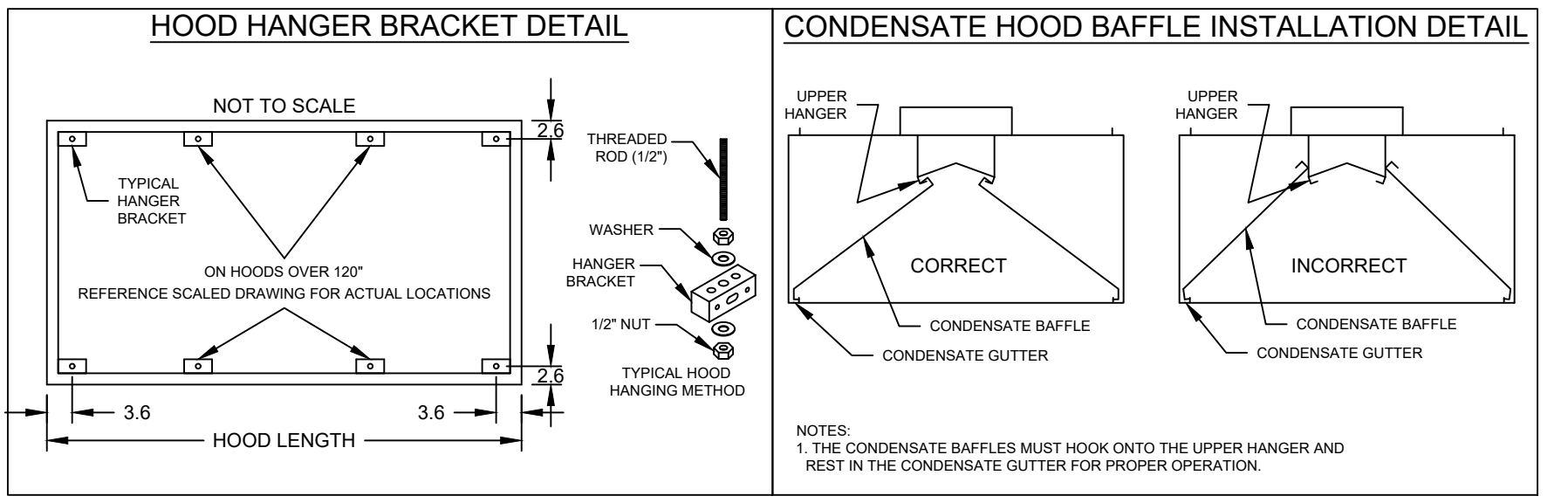
**Direct Drive Centrifugal Roof Exhaust Fan**

MARK INFORMATION		FAN INFORMATION						MOTOR INFORMATION					
QTY	MARK	MODEL	VOLUME (CFM)	TOTAL EXTERNAL SP (IN WG)	FAN RPM	OPERATING POWER (HP)	WEIGHT (LB.)	SIZE (HP)	V/C/P	ENCLOSURE	MOTOR RPM	WINDINGS	NEC FLA*
1	PRV-1 Restroom	XRED-090-VG	250	0.5	1,466	0.06	40	0.1	115/60/1	TN	1725	1	NA

\*NEC FLA - Based on table 430.250 or 430.248 of National Electrical Code 2020. Actual motor FLA may vary for sizing thermal overload, consult factory

**PRV-1 Restroom : SELECTED OPTIONS AND ACCESSORIES**

Standard Curb Cap Size - 17 Square  
 UL/cUL 705 Listed - "Power Ventilators"  
 Switch, NEMA-1, Toggle, Shipped with Unit  
 Hinge, Factory Installed  
 Damper Shipped Loose, BD-100-PB-10X10, Gravity Operated, Not Coated  
 Birdscreen: Galvanized, nom. 84% Free Area  
 Composite Wheel Material



PROJECT: 8/28/2024  
 MARK: ITEM 25 CONDENSATE HOOD PRV-1 RESTROOM CONTROLS

ACCUREX - W/LA  
 PHILLIP KRAFT  
 PHILLIP.KRAFT@ACCUREX.COM  
 262-227-7865

**ACCUREX**

NEW CULVER'S RESTAURANT  
 2061 N IL Route 50  
 Bourbonnais, IL 60914  
 County of KANKAKEE

**Culver's**  
 Culver Franchising System, Inc.  
 1240 Water Street  
 Prairie du Sac, WI 53578  
 608-843-7880

OWNER:  
 FAR OF ROMEVILLE, LLC  
 400 E Summit Avenue  
 Wales, WI 53183  
 Tony Milazzo  
 262-751-5381

OLLMANN ERNEST MARTIN ARCHITECTS  
 200 South State Street  
 Belvidere Illinois 61008  
 815-544-7790 Phone  
 © OEMA. All rights reserved. any copying, transmission or disclosure subject to OEMA written approval.

FAN SCHEDULE & DETAILS  
 Date: 8-29-2024  
 Revision:  
 2024-082  
 M204

CONSTRUCTION SET 12-5-2024

