

SECTION 15732 - PACKAGED BOOFTOP AIR-CONDITIONING UNITS

PART 1 - GENERAL

1.1 SECTION REQUIREMENTS

- A. SUBMITTALS: PRODUCT DATA AND SHOP DRAWINGS.
- B. COMPLY WITH ASHRAE 15.
- C. EER: EQUAL TO OR GREATER THAN PRESCRIBED BY THE ENERGY CODE ADOPTED BY THE AUTHORITY HAVING JURISDICTION.
- D. WARRANTIES: SUBMIT A WRITTEN WARRANTY, SIGNED BY THE MANUFACTURER, AGREEING TO THE REPAIR OR REPLACEMENT OF COMPONENTS THAT FAIL WITHIN 5 YEARS OF SUBSTANTIAL COMPLETION.

PART 2 - PRODUCTS

- 2.1 PACKAGE UNITS, 3 TO 20 TONS
 - A. FACTORY ASSEMBLED AND TESTED, CONSISTING OF COMPRESSORS, CONDENSERS, EVAPORATOR COILS, CONDENSER AND EVAPORATOR FANS, REFRIGERATION AND TEMPERATURE CONTROLS, FILTERS, AND DAMPERS.
 - 1. REFER TO ROOFTOP HEATING/COOLING UNIT SCHEDULE ON DRAWING M600 FOR CAPACITIES, AND MANUFACTURERS.
 - 2. EVAPORATOR FANS: BELT OR DIRECT DRIVEN, FORWARD CURVED CENTRIFUGAL.
 - 3. EXHAUST/RELIEF FANS: DIRECT DRIVE, FORWARD CURVED CENTRIFUGAL OR PROPELLER.
 - 4. CONDENSER FANS: DIRECT DRIVE PROPELLER.
 - 5. REFRIGERANT COILS: ALUMINUM FINES AND COPPER COIL.
 - 6. COMPRESSORS: SERVICEABLE; HERMETIC OR FULLY HERMETIC, WITH SAFETY CONTROLS, HOT GAS BYPASS, AND THERM OFF CONTROLS.
 - 7. HEAT EXCHANGERS: GAS-FIRED, WITH GAS CONTROLS, ELECTRONIC IGNITION, HIGH LIMIT CUTOUT, AND FORCED DRAFT PULLING SWITCH.
 - 8. ECONOMIZER CONTROLS (COMPARATIVE ENTHALPY, 100% CAPACITY).
 - 9. SMOKE DETECTORS: PHOTOELECTRIC IN SUPPLY AND/OR RETURN AS CALLED FOR IN SCHEDULE ON SHEET M600.
 - 10. OPERATING CONTROLS: TWO STAGE HEATING AND TWO STAGE COOLING ON UNITS 7-1/2 TONS AND OVER.
 - 11. FURN. CURB.
 - 12. CONTROL WIRING FROM T-STAT TO ROOFTOP UNIT: SHALL BE 18GA / 7 CONDUCTOR, RATED FOR PLENUM APPLICATIONS.
 - 13. CONTROL WIRING FROM T-STAT TO REMOTE T-SENSOR SHALL BE A SEPARATE 18GA / 2 CONDUCTOR SHIELDED, RATED FOR PLENUM APPLICATIONS.

PART 3 - EXECUTION

3.1 INSTALLATION

- A. INSTALL UNITS LEVEL AND PLUMB AND FIRMLY ANCHORED.
- B. CONNECT GAS PIPING TO BURNER WITH PIPE SAME SIZE AS GAS TRAIN INLET, AND PROVIDE UNION WITH SUFFICIENT CLEARANCE FOR BURNER REMOVAL AND SERVICE.
- C. INSTALL DUCTS TO TERMINATION IN ROOF MOUNTING FRAMES. TERMINATE DUCTS THROUGH ROOF STRUCTURE.
- D. CONNECT UNITS TO WIRING SYSTEMS AND TO GROUND.

END OF SECTION 15732

SECTION 15910 - DUCTS AND ACCESSORIES

PART 1 - GENERAL

1.1 SECTION REQUIREMENTS

- A. SUBMITTALS: PRODUCT DATA FOR FIRE AND SMOKE DAMPERS.
- B. COMPLY WITH NFPA 90A FOR SYSTEMS SERVING SPACES MORE THAN 25,000 CU. FT. IN VOLUME OR BUILDING TYPES II, IV, AND V CONSTRUCTION MORE THAN 3 STORIES IN HEIGHT.
- C. COMPLY WITH NFPA 90B FOR SYSTEMS SERVING SPACES IN 1 OR 2 FAMILY DWELLINGS OR SERVING SPACES LESS THAN 25,000 CU. FT.
- D. COMPLY WITH NFPA 96, "VENTILATION CONTROL AND FIRE PROTECTION OF COMMERCIAL COOKING OPERATIONS," FOR KITCHEN HOOD DUCTS.
- E. COMPLY WITH UL 181 AND UL 181A FOR DUCTS AND CLOSURES.
- F. TESTING, ADJUSTING, AND BALANCING AGENCY QUALIFICATIONS: AAAC CERTIFIED (TO BE FURNISHED BY OWNER).

PART 2 - PRODUCTS

2.1 DUCTS

- A. SPIRAL DUCT: SPIRAL LOCK SEAM, WITHOUT INSULATION, 600 GALVANIZED FINISH, ASTM A-663/924
 - 1. BASES OF DESIGN MANUFACTURERS: KNOWN SPROCKET, ALTERNATES TO THE BASES OF DESIGN MUST BE SUBMITTED FOR REVIEW.
 - 2. FITTINGS: FACTORY PRODUCED STANDING SEAM CONSTRUCTION WITH INTERNAL SEALING, FITTINGS WITH A MAJOR AXIS OF 30" OR SMALLER SHALL BE 20 GAUGE, FITTINGS WITH A MAJOR AXIS OF 31" - 48" SHALL BE 18 GAUGE.
- B. GALVANIZED STEEL SHEET: FORMING STEEL, ASTM A 653/633, G90 COATING DESIGNATION.
- C. DUCT LINER: ASTM C 2071, TYPE II, WITH AN AIRSTREAM SURFACE COATED WITH A TEMPERATURE RESISTANT COATING. THICKNESS: 3-1/2 INCH, R-VALUE: 8
 - 1. ADHESIVE: ASTM C 916, TYPE I.
 - 2. MECHANICAL FASTENERS: GALVANIZED STEEL PIN, LENGTH AS REQUIRED TO PENETRATE LINER PLUS A 1/8 INCH PROJECTION MAXIMUM INTO THE AIRSTREAM.
- D. JOINT AND SEAM TAPS: COMPLY WITH UL 181A.
- E. JOINT AND SEAM SEALANT: COMPLY WITH UL 181A.
- F. RECTANGULAR METAL DUCT FABRICATION: COMPLY WITH SMACNA'S "HVAC DUCT CONSTRUCTION STANDARD" FOR METAL THICKNESS, REINFORCING TYPES AND INTERVALS, TIE ROD APPLICATIONS, AND JOINT TYPES AND INTERVALS.

2.2 ACCESSORIES

- A. VOLUME CONTROL DAMPERS: FACTORY FABRICATED VOLUME CONTROL DAMPERS, COMPLETE WITH REQUIRED HARDWARE AND ACCESSORIES. SINGLE BLADE AND MULTIPLE OPPOSED BLADE, STANDARD LEAKAGE RATING, AND SUITABLE FOR HORIZONTAL OR VERTICAL APPLICATIONS.
- B. FIRE DAMPERS: FACTORY-FABRICATED FIRE DAMPERS, COMPLETE WITH REQUIRED HARDWARE AND ACCESSORIES. UL LABELED ACCORDING TO UL 555, "FIRE DAMPERS".
- C. FLEXIBLE CONNECTORS: FLAME RETARDANT OR NONCOMBUSTIBLE FABRICS, COATINGS, AND ADHESIVES COMPLYING WITH UL 181, CLASS I.
- D. FLEXIBLE DUCTS: FACTORY FABRICATED, INSULATED, ROUND DUCT, WITH AN OUTER JACKET ENCLOSED 2 INCH THICK, GLASS FIBER INSULATION, R-VALUE: 6.0, AROUND A CONTINUOUS INNER LINER.

PART 3 - EXECUTION

3.1 INSTALLATION

- A. DUCT SYSTEM PRESSURE CLASS: CONSTRUCT AND INSTALL EACH DUCT SYSTEM WITH 2 INCH POSITIVE AND NEGATIVE DUCT PRESSURE CLASSIFICATIONS.
- B. CONCEALED DUCTS FROM VIEW IN FINISHED AND OCCUPIED SPACES, EXCEPT WHERE NOTED AS EXPOSED.
- C. AVOID PASSING THROUGH ELECTRICAL EQUIPMENT SPACES AND ENCLOSURES.
- D. SUPPORT AND CONNECT METAL DUCTS ACCORDING TO SMACNA'S "HVAC DUCT CONSTRUCTION STANDARD".
- E. INSTALL DUCT ACCESSORIES ACCORDING TO APPLICABLE PORTIONS OF DETAILS OF CONSTRUCTION AS SHOWN IN SMACNA STANDARDS.
- F. INSTALL LINER AND/OR INSULATION ON DUCTWORK PER THE MATERIAL SCHEDULE ON SHEET M600.
- G. INSTALL VOLUME CONTROL DAMPERS IN LINED DUCT WITH METHODS TO AVOID DAMAGE TO LINER AND TO AVOID FROSION OF DUCT LINER.
- H. INSTALL FIRE AND SMOKE DAMPERS ACCORDING TO MANUFACTURERS UL APPROVED WRITTEN INSTRUCTIONS.
- I. INSTALL FLEXIBLE UNITS IN THE DAMPERS.
- J. PROVIDE SADDLE TAPS AT TEES FOR EXPOSED DUCTWORK.

3.2 TESTING, ADJUSTING, AND BALANCING

- A. THE OWNER WILL SUPPLY AN INDEPENDENT BALANCE AGENT TO TO BALANCE AND ADJUST THE HVAC INSTALLATION. THE BALANCE AGENT IS RESPONSIBLE FOR ANY PENALTIES OR BEET CHARGES REQUIRED.
- B. THE GC IS TO HAVE TRAINED STAFFED AVAILABLE DURING THE BALANCING TO CORRECT ISSUES NOTED BY THE BALANCE AGENT.
- C. THE BALANCE AGENT IS TO BALANCE AIRFLOW WITHIN DISTRIBUTION SYSTEMS, INCLUDING SUBMANS, BRANCHES, AND TERMINALS TO INDICATED QUANTITIES +/- 10%. THE HOOD EXHAUST SYSTEM SHALL BE BALANCED TO A TOLERANCE OF +/- 10-15% AND THE MAKE-UP AIR SYSTEM TO A TOLERANCE OF -10-0%.
- D. THE BALANCE AGENT IS TO SUPPLY A COPY OF THE BALANCE REPORT TO THE OWNER, ENGINEER AND GENERAL CONTRACTOR FOR REVIEW.

END OF SECTION 15910

SECTION 15855 - DIFFUSERS, REGISTERS, AND GRILLES

PART 1 - GENERAL

1.1 SECTION REQUIREMENTS

- A. SUBMITTALS: NONE.

PART 2 - PRODUCTS

2.1 OUTLETS AND INLETS

- A. DIFFUSERS:
 - 1. REFER TO GRILLS, REGISTERS, AND DIFFUSERS SCHEDULE FOR EQUIPMENT SCHEDULE
 - 2. MANUFACTURER: AS SCHEDULED (NO SUBSTITUTIONS)
 - 3. MATERIAL: AS SCHEDULED.
 - 4. FINISH: AS SCHEDULED.
 - 5. MOUNTING: AS SCHEDULED.
- B. WALL AND CEILING REGISTERS:
 - 1. REFER TO GRILLS, REGISTERS, AND DIFFUSERS SCHEDULE FOR EQUIPMENT SCHEDULE
 - 2. MANUFACTURER: AS SCHEDULED (NO SUBSTITUTIONS)
 - 3. MATERIAL: AS SCHEDULED.
 - 4. FINISH: AS SCHEDULED.
 - 5. MOUNTING: COUNTERSUNK SCREW.
- C. WALL AND CEILING GRILLES:
 - 1. REFER TO GRILLS, REGISTERS, AND DIFFUSERS SCHEDULE FOR EQUIPMENT SCHEDULE
 - 2. MANUFACTURER: AS SCHEDULED (NO SUBSTITUTIONS)
 - 3. MATERIAL: AS SCHEDULED.
 - 4. FINISH: AS SCHEDULED.
 - 5. MOUNTING: COUNTERSUNK SCREW OR LAY IN, DEPENDING LOCATION.

PART 3 - EXECUTION

3.1 INSTALLATION

- A. COORDINATE LOCATION AND INSTALLATION WITH DUCT INSTALLATION AND INSTALLATION OF OTHER CEILING AND WALL MOUNTED ITEMS.
- B. LOCATE CEILING DIFFUSERS, REGISTERS, AND GRILLES, AS INDICATED ON THE ARCHITECTURAL "REFLECTED CEILING PLANS." UNLESS OTHERWISE INDICATED, LOCATE UNITS IN CENTER OF ACOUSTICAL CEILING PANELS.

END OF SECTION 15855

HVAC GENERAL NOTES

- A. GENERAL NOTES APPLY TO HVAC SHEETS.
- B. WORK SHALL COMPLY WITH STATE AND LOCAL CODE REQUIREMENTS AS APPROVED AND AMENDED BY THE AUTHORITY HAVING JURISDICTION, INCLUDING APPLICABLE SECTIONS OF NFPA, THE MECHANICAL CODE, AND ANY INTERIM AMENDMENTS AT THE TIME OF THE PROPOSAL. PURCHASE PERMITS ASSOCIATED WITH THE WORK. OBTAIN INSPECTIONS REQUIRED BY CODE. SEE SHEET GOOD FOR THE PREVAILING CODES.
- C. CONTRACTOR AND SUBCONTRACTORS SHALL REVIEW A COMPLETE SET OF THE CONSTRUCTION DOCUMENTS.
- D. COORDINATE WORK WITH THE WORK OF OTHER TRADES, EQUIPMENT FURNISHED BY OTHERS, REQUIREMENTS OF THE OWNER, AND OF THE EXISTING CONDITIONS AT THE PROJECT SITE.
- E. DRAWINGS FOR THE MECHANICAL WORK ARE DIAGRAMMATIC, SHOWING THE GENERAL LOCATION, TYPE, LAYOUT, AND EQUIPMENT REQUIRED. THE DRAWING SHALL NOT BE SCALED FOR EXACT MEASUREMENTS. REFER TO ARCHITECTURAL DRAWINGS FOR DIMENSIONS. REFER TO MANUFACTURERS STANDARD INSTALLATION DRAWINGS FOR EQUIPMENT CONNECTIONS AND INSTALLATION REQUIREMENTS. PROVIDE DUCTWORK, CONNECTIONS, OFFSETS, ACCESSORIES, AND MATERIALS NECESSARY FOR A COMPLETE SYSTEM.
- F. DUCT DIMENSIONS ON PLANS INDICATE DIMENSIONS OF INTERNAL FREE AREA.
- G. PERFORATED CEILING DIFFUSERS SHALL BE 4-WAY UNLESS NOTED OTHERWISE.
- H. COORDINATE ROOF WORK WITH THE OWNER'S CONSTRUCTION MANAGER PRIOR TO CONSTRUCTION.
- I. UNLESS NOTED OTHERWISE, RECTANGULAR DUCT ELBOWS GREATER THAN 45° SHALL BE WITH 90° ELBOWS WITH DOUBLE-THICKNESS TURNING VANES AND RECTANGULAR DUCT ELBOWS 45° OR LESS SHALL BE RADIUS ELBOWS WITH AN INSIDE RADIUS OF AT LEAST 1/2 THE WIDTH OF THE DUCT.
- J. REPLACE AIR FILTERS WITH NEW, CLEAN MERV 8 AIR FILTERS AT TURNOVER.
- K. THE TERM "FURNISH" MEANS SUPPLY AND DELIVER TO THE PROJECT SITE, READY FOR UNLOADING, UNPACKING, ASSEMBLY, INSTALLATION, AND SIMILAR OPERATIONS. THE TERM "INSTALL" DESCRIBES THE OPERATIONS AT THE PROJECT SITE INCLUDING THE ACTUAL UNLOADING, UNPACKING, ASSEMBLY, ERECTING, PLACING, ANCHORING, APPLYING, WORKING TO DIMENSION, FINISHING, CURING, PROTECTING, CLEANING, AND SIMILAR OPERATIONS. THE TERM "PROVIDE" MEANS TO FURNISH AND INSTALL, COMPLETE AND READY FOR THE INTENDED USE.
- L. PROVIDE LABELING CALLED FOR IN THE HVAC DRAWINGS USING ENGRAVED PHENOLIC PLATES.
- M. PROVIDE P3000 12 GA. UNISTRUT WITH PG-H FINISH FOR DUCT SUPPORTS AND OTHER UNISTRUT IN AREAS EXPOSED TO VIEW. SLOTTED UNISTRUT AND OTHER UNISTRUT WITH HOLES IS NOT ACCEPTABLE.

MECHANICAL WORK NOTES

1. ALL MECHANICAL WORKED LIST BE PERFORMED ACCORDING TO CMV 2022 AND ENERGY CODE 2022.
2. PRIOR TO THE USE OF OR CONCEALMENT OF A GREASE DUCT SYSTEM, A LEAKAGE TEST SHALL BE PERFORMED TO DETERMINE THAT WELDED JOINTS AND SEAMS ARE LEAK TIGHT. THE LEAKAGE TEST SHALL CONSIST OF A LIGHT TEST, WATER PRESSURE TEST, OR AN APPROVED EQUIVALENT TEST.
3. PROVIDE DUCT LEAKAGE TEST THAT COMPLIES WITH CMV 609.3.2.

HVAC MATERIAL SCHEDULE

CATEGORY	APPLICATION	ALLOWABLE MATERIAL	
DUCT	EXPOSED SUPPLY	RECT. LINED OR ROUND AS SHOWN, NO EXPOSED DUCT-SEALING MASTIC	
	EXPOSED RETURN	RECTANGULAR, NO EXPOSED DUCT SEALING MASTIC	
	EXPOSED GENERAL EXHAUST	RECTANGULAR, NO EXPOSED DUCT-SEALING MASTIC	
	CONCEALED, SUPPLY	RECT. OR ROUND AS SHOWN, LINED OR INSULATED	
	CONCEALED RETURN	RECT. OR ROUND AS SHOWN, LINED OR INSULATED	
	CONCEALED GENERAL EXHAUST	RECT. OR ROUND AS SHOWN, LINED OR INSULATED	
	CONCEALED, TYPE I HOOD EXHAUST.	RECT. 16 GA. BLACK IRON W/WRAP OR UL 1978 FACTORY-MANUFACTURED DUCT W/ WRAP. (SUBMIT SHOP DRAWINGS FOR FACTORY-MANUFACTURED DUCT PRIOR TO ORDERING FOR APPROVAL.)	

HVAC ABBREVIATIONS

- AFI ABOVE FINISHED FLOOR
- CD CONDENSATE
- CU CONDENSING UNIT
- EF EXHAUST FAN
- EF'S EXISTING
- HD HOOD
- MJA MAKEUP AIR UNIT
- OPD OPPOSED BLADE DAMPER
- RG RETURN GRILLE
- RTU ROOFTOP UNIT
- SR SUPPLY REGISTER
- VSC VARIABLE SPEED CONTROL
- CCDAS TENANT'S CCD ALARM SUPPLIER
- CC GENERAL CONTRACTOR
- NES TENANT'S HVAC EQUIPMENT SUPPLIER
- TMB TENANT'S TEST AND BALANCE VENDOR
- TCC TENANT'S CABLING CONTRACTOR
- NES TENANT'S KITCHEN EQUIPMENT SUPPLIER
- HS TENANT'S HOOD SUPPLIER
- TDC TENANT DUCT CLEANER
- TEMS TENANT'S ENERGY MANAGEMENT SYSTEM SUPPLIER
- TMS TENANT'S MENU BOARD SUPPLIER
- TMS TENANT'S MILLWORK SUPPLIER
- TP TENANT'S PHONE SUPPLIER
- TRIS TENANT'S REFRIG. SUPPLIER
- TSV TENANT'S SIGN VENDOR
- TUV TENANT'S UV SANITIZER SUPPLIER
- WCS TENANT'S WALK-IN COOLER SUPPLIER
- WHS TENANT'S WATER HEATER SUPPLIER

HVAC SYMBOLS

- CEILING SUPPLY DIFFUSER
- CEILING RETURN DIFFUSER
- SUPPLY REGISTER
- RETURN REGISTER
- FLEXIBLE DUCT
- MITERED CORNER WITH TURNING VANES
- DUCTWORK INTERNAL FREE DIMENSIONS
- RECTANGULAR TO ROUND TRANSITION
- GREASE DUCT CLEANOUT
- MITERED CORNER WITHOUT TURNING VANES
- GRIDPOINT THERMOSTAT
- GRIDPOINT ZONE SENSOR MODULE
- PLAN NOTE: SEE PLAN NOTES LISTED ON THE SAME SHEET FOR NOTE MEANING
- EQUIPMENT TAG: SEE EQUIPMENT SCHEDULE ON SHEET M600 FOR EQUIPMENT INFORMATION
- GRILL, REGISTER, OR DIFFUSER TAG: TAG SIZE: 1/2" X 1/2" AIRFLOW (CFM)



LINDLE DESIGN GROUP
1125 W. MAIN ST.
LETTA, IL 61148
TEL: 815-426-9150
303.9741.9873
WWW.LINDLEDESIGN.COM



1/17/24

COPYRIGHT 2024
THIS DRAWING IS AN INSTRUMENT OF SERVICE
AND AS SUCH REMAINS THE PROPERTY OF
CHIPOTLE MEXICAN GRILL, INC. PERMISSION FOR
USE OF THE DOCUMENT IS LIMITED AND CAN BE
EXTENDED ONLY BY WRITTEN AGREEMENT WITH
CHIPOTLE MEXICAN GRILL, INC.



CHIPOTLE MEXICAN GRILL, INC.
PO BOX 183566
COLUMBIA, MO 65218-2566
TELEPHONE: 616.382.2000
INTERNET: WWW.CHIPOTLE.COM

STORE NO.: 5401
CHIPOTLE LAUREL & O'HARA
990 LAUREL ROAD
OAKLEY, CA 94561

Issue/Revised: 11/25/24 PERMIT SET

Revisions: 2 03/11/2025 BUILDING COMMENTS

Drawn: JW Checked: JW

Project No: CMXXXX

Contract: HVAC SPECIFICATIONS

M010



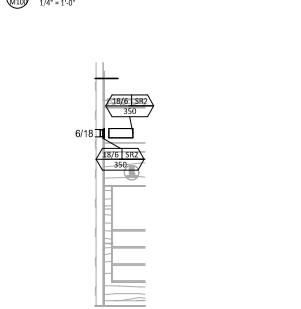
HVAC PLAN NOTES

- SEE ARCHITECTURAL REFLECTED CEILING PLAN FOR CEILING MOUNTED EQUIPMENT LOCATION. TYPICAL.
- PAINT DUCTWORK VISIBLE THROUGH DINING ROOM SUPPLY REGISTERS BLACK. TYPICAL.
- PENETRATIONS THROUGH SHEAR WALL SHALL BE LIMITED TO 10" DIAMETER (OR A GROUP OF PENETRATIONS ALL CONTAINED WITHIN 10" DIAMETER). IF LARGER PENETRATIONS OR GROUPS OF PENETRATIONS ARE REQUIRED COORDINATE WITH STRUCTURAL ENGINEER FOR APPROPRIATE BRACING. SEE STRUCTURAL DRAWINGS FOR SHEAR WALL LOCATION.
- 18/76 DUCT UP FOR TRANSITION TO RTU-1 RETURN CONNECTION IN ROOF CURB. RTU-1 SHALL HAVE AN INTEGRAL SMOKE DETECTOR MOUNTED IN THE RETURN AIR STREAM. INTERLOCK SMOKE DETECTOR TO RTU-1 OPERATION.
- 26/18 DUCT UP FOR TRANSITION TO RTU-2 RETURN CONNECTION IN ROOF CURB. RTU-2 SHALL HAVE AN INTEGRAL SMOKE DETECTOR MOUNTED IN THE RETURN AIR STREAM. INTERLOCK SMOKE DETECTOR TO RTU-2 OPERATION.
- 26/18 DUCT UP FROM BUILDING SUPPLY THROUGH ROOF. TRANSITION TO RTU-1 SUPPLY CONNECTION IN ROOF CURB.
- 26/18 DUCT UP FROM BUILDING SUPPLY TO RTU-2 SUPPLY CONNECTION. TRANSITION IN ROOF CURB.
- 16/16 DUCT UP THROUGH ROOF. TRANSITION TO MAU-1 SUPPLY CONNECTION IN ROOF CURB.
- 24/10 DUCT UP FROM HOOD THROUGH ROOF TO CF-1 COMPLIANT WITH NFPA 96. PROVIDE RADIUSED ELBOWS WITH AN INSIDE RADIUS OF 0.5W AT ELBOWS IN GREASE DUCT.
- 8/6 DUCT UP THROUGH ROOF TO EF-2.
- 24/10 DUCT DOWN TO MAKEUP AIR PSP DUCT CONNECTION. TRANSITION TO SUPPLY PLENUM OPENING SIZE. TYPICAL FOR 3.
- 22" DIA. DUCT DOWN TO AC PSP DUCT CONNECTION. TRANSITION TO SUPPLY PLENUM OPENING SIZE. TYPICAL. CAP UNUSED DUCT CONNECTIONS.
- INSTALL GRIDPOINT THERMOSTATS FURNISHED BY TEMS FOR RTU-1 (15200) AND RTU-2 (15200) AT THIS LOCATION AT 48" AFF. COORDINATE WITH ELECTRICAL SWITCHING IN THIS AREA. PROVIDE THERMOSTAT WIRING FROM EACH THERMOSTAT TO THE CORRESPONDING ROOFTOP UNIT. PROVIDE CAT5 CABLE FROM RTU-1 15200 TO 4804 82 ABOVE ELECTRICAL PANELS LEAVE 10" OF CABLE COILED UP INSIDE OF 4804 82. NO 30" BEHIND WALL OF THERMOSTAT FOR FINAL CONNECTION TO THE EMS SYSTEM BY THE TEMS) AND LABEL BOTH ENDS OF CABLE "TSTATS". SEE GRIDPOINT INSTALLATION INSTRUCTIONS FOR TERMINATION INSTRUCTIONS.
- INSTALL GRIDPOINT ZONE SENSOR MODULES FURNISHED BY TEMS FOR RTU-2 AT THIS LOCATION 84" AFF DIRECTLY TO WALL (NO JUNCTION BOX). COORDINATE LOCATION WITH EQUIPMENT. PROVIDE 18G-24G SHIELDED TWISTED PAIR FROM ZSM TO RTU-2 THERMOSTAT T1 TERMINALS. SEE GRIDPOINT INSTALLATION INSTRUCTIONS FOR TERMINATION INSTRUCTIONS.
- INSTALL GRIDPOINT ZONE SENSOR MODULES FURNISHED BY TEMS FOR RTU-1 AT THIS LOCATION 60" AFF DIRECTLY TO WALL (NO JUNCTION BOX). COORDINATE LOCATION WITH EQUIPMENT. PROVIDE 18G-24G SHIELDED TWISTED PAIR FROM ZSM TO RTU-1 THERMOSTAT T1 TERMINALS. SEE GRIDPOINT INSTALLATION INSTRUCTIONS FOR TERMINATION INSTRUCTIONS.
- INSTALL GRIDPOINT SUPPLY PROBE FURNISHED BY TEMS FOR RTU-1 IN THE SUPPLY DUCTWORK UPSTREAM FROM THE FIRST BRANCH CONNECTION. PROVIDE 18G-24G SHIELDED TWISTED PAIR FROM SUPPLY PROBE TO RTU-1 THERMOSTAT T2 TERMINALS. SEE GRIDPOINT INSTALLATION INSTRUCTIONS FOR TERMINATION INSTRUCTIONS.
- INSTALL GRIDPOINT SUPPLY PROBE FURNISHED BY TEMS FOR RTU-2 IN THE SUPPLY DUCTWORK UPSTREAM FROM THE FIRST BRANCH CONNECTION. PROVIDE 18G-24G SHIELDED TWISTED PAIR FROM SUPPLY PROBE TO RTU-2 THERMOSTAT T2 TERMINALS. SEE GRIDPOINT INSTALLATION INSTRUCTIONS FOR TERMINATION INSTRUCTIONS.
- INSTALL REMOTE TEMPERATURE SENSOR FOR HOOD HD-1 AT THIS LOCATION 84" AFF. COORDINATE LOCATION WITH EQUIPMENT. PROVIDE (2) 48" G. THERMISTOR CABLE FROM TEMPERATURE SENSOR TO HOOD CONTROL PANEL.

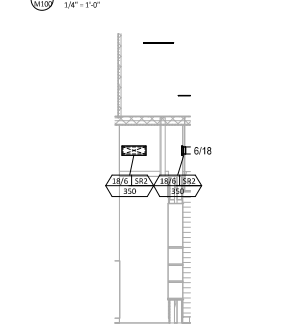
HVAC PLAN NOTES

- INSTALL KITCHEN HOOD, HD-1. SUPPORT HOOD PER MANUFACTURER'S INSTALLATION INSTRUCTIONS AND AS DETAILED IN THE ARCHITECTURAL AND STRUCTURAL DRAWINGS. INSTALL HOOD ACCORDING TO THE REQUIREMENTS OF ITS LISTING, IN COMPLIANCE WITH NFPA 96. THE BUILDING CODE AND AUTHORITIES HAVING JURISDICTION. HOOD SHALL HAVE AN INTEGRAL DUCT COLLAR TEMPERATURE SENSOR TO AUTOMATICALLY ENERGIZE THE EXHAUST AND MAKEUP AIR FANS IF COOKING TEMPERATURES ARE DETECTED. EXHAUST DUCT SYSTEM TO BE WELDED OR FACTORY MANUFACTURED WATER AND AIR TIGHT. INSTALL CLEANOUTS PER CODE AND AS SHOWN. INSTALL HOOD PER DETAILS 2 AND 3/M700. CHIPOTLE WILL PROVIDE AN INDEPENDENT TESTING AGENCY FOR TESTING THE INTEGRITY OF THE GREASE DUCT SYSTEM.
- INSTALL REMOTE CONDENSING UNIT FOR WALK-IN COOLER ON ROOF AS DETAILED IN THE ARCHITECTURAL AND STRUCTURAL DRAWINGS. INSTALL REFRIGERANT LINE SET, THERMOSTATIC EXPANSION VALVE, SOLENOID VALVE, TEMPERATURE CONTROL, SIGHT GLASS, FILTER DRIER, PRESSURE CONTROL, LOW AMBIENT CONTROL, AND WEATHERPROOF HOUSING. TRAP AND SLOPE REFRIGERANT LINES PER MANUFACTURER'S RECOMMENDATIONS. INSTALLATION SHALL COMPLY WITH ASHRAE/ANSI STANDARD 15. INSTALL THE REFRIGERANT LINE SET UNDER THE ROOF DECK TO WITHIN 3" OF THE CONDENSING UNIT. CUT 2-1/2" HOLE IN WALK-IN COOLER ROOF FOR REFRIGERANT LINE SET AND SEAL PER THE COOLER MANUFACTURER'S INSTALLATION INSTRUCTIONS AFTER LINE SET IS INSTALLED.
- INSTALL REMOTE CONDENSER FOR ICE MACHINE ON ROOF AS DETAILED IN THE ARCHITECTURAL AND STRUCTURAL DRAWINGS. INSTALL REFRIGERANT LINE SET, THERMOSTATIC EXPANSION VALVE, SOLENOID VALVE, TEMPERATURE CONTROL, SIGHT GLASS, FILTER DRIER, PRESSURE CONTROL, LOW AMBIENT CONTROL, AND WEATHERPROOF HOUSING. TRAP AND SLOPE REFRIGERANT LINES PER MANUFACTURER'S RECOMMENDATIONS. SEAL PIPING PENETRATIONS THROUGH ROOF. INSTALLATION SHALL COMPLY WITH ASHRAE/ANSI STANDARD 15. INSTALL THE REFRIGERANT LINE SET UNDER THE ROOF DECK TO WITHIN 3" OF THE REMOTE CONDENSER. IF REFRIGERANT PIPING TO ICE MAKER IS EXPOSED TO PUBLIC VIEW CONCEAL WITHIN A STAINLESS STEEL SHROUD AS SHOWN IN THE ARCHITECTURAL DRAWINGS.
- INSTALL ROOFTOP EQUIPMENT PER MANUFACTURER'S INSTALLATION INSTRUCTIONS AND AS DETAILED IN THE ARCHITECTURAL AND STRUCTURAL DRAWINGS.
- INSTALL EXHAUST FAN EF-1 PER DETAIL 5/M700 AND AS DETAILED IN THE ARCHITECTURAL AND STRUCTURAL DRAWINGS. INSTALL GIBBS VIRROGARD SYSTEM FURNISHED BY CHIPOTLE ON EXHAUST FAN, E.F.1.
- PROVIDE SUPPLY DIFFUSER CONNECTION TO SUPPLY SYSTEM PER DETAIL 1/M700. TYPICAL.
- PROVIDE AUDIO/VISUAL REMOTE SMOKE DETECTOR ANNUNCIATOR WITH REMOTE KEY OPERATED RESET. WIRE A UNIT BACK TO EACH SMOKE DETECTOR. MOUNT UNIT 60" AFF. TYPICAL.
- INSTALL REME HALO AIR PURIFIER FURNISHED BY TUV IN RTU PER DETAIL 6/M700. SEE ELECTRICAL DRAWINGS FOR POWER CONNECTION INFORMATION. INSTALL LUV WARNING STRIPES ON FACE OF ENCLOSURE PER DETAIL AND ON ANY RTU ACCESS DOORS) THROUGH WHICH THE REME HALO WOULD BE VISIBLE IF OPENED.
- MAINTAIN 30" CLEARANCE BETWEEN WATER HEATER FLUE TERMINATION AND OUTSIDE AIR INTAKES. MAINTAIN 10" CLEARANCE BETWEEN WATER HEATER COMBUSTION AIR INTAKE AND EXHAUST FAN EF-1 DISCHARGE. SEE PLUMBING DRAWINGS FOR MORE INFORMATION ON WATER HEATER FLUE AND COMBUSTION AIR TERMINATIONS.
- ADJUST SUPPLY REGISTERS SO THAT SUPPLY AIR FITS WALL ON OPPOSITE SIDE OF ROOM AS APPROPRIATE. 7-1/2" WITH 1/4" GASKET SET IN THE DINING ROOM.
- PROVIDE 1" DIAMETER CONDENSATE DRAINAGE LINE FROM RTU TO EXISTING ROOF DRAIN. VERIFY EXACT ROUTING IN FIELD.
- PROVIDE COMBUSTION AIR AND FLUE FOR WATER HEATERS. ROUTE THROUGH ROOF AND PROVIDE WITH CONCERNING VENT KIT. REFERENCE WATER HEATER MANUFACTURER'S SPEC. MAINTAIN MINIMUM 30" OF CLEARANCE FROM ALL FRESH AIR INTAKES.

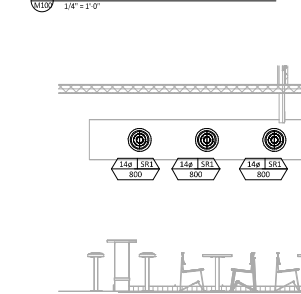
1 HVAC DINING ROOM RETURN SECTION
1/4" = 1'-0"



1 HVAC DINING ROOM SECTION
1/4" = 1'-0"



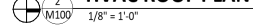
4 HVAC DINING ROOM SECTION
1/4" = 1'-0"



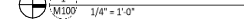
1 HVAC DINING ROOM SECTION
1/4" = 1'-0"



2 HVAC ROOF PLAN
1/8" = 1'-0"



1 HVAC FLOOR PLAN
1/4" = 1'-0"



COPYRIGHT 2024
THIS DOCUMENT IS AN INSTRUMENT OF SERVICE
AND AS SUCH REMAINS THE PROPERTY OF
CHIPOTLE MEXICAN GRILL, INC. PERMISSION FOR
USE OF THIS DOCUMENT IS LIMITED AND CAN BE
EXTENDED ONLY BY WRIT TO THE ARCHITECT WITH
CHIPOTLE MEXICAN GRILL, INC.

CHIPOTLE MEXICAN GRILL, INC.
1990 LAUREL ROAD
OAKLEY, CA 94561

STORE NO.: 5401
CHIPOTLE LAUREL & O'HARA
990 LAUREL ROAD
OAKLEY, CA 94561

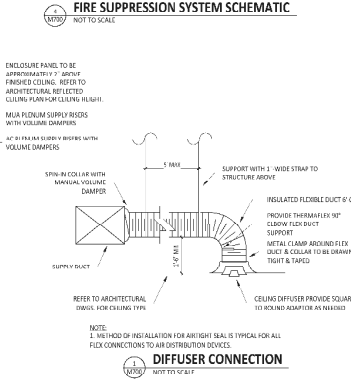
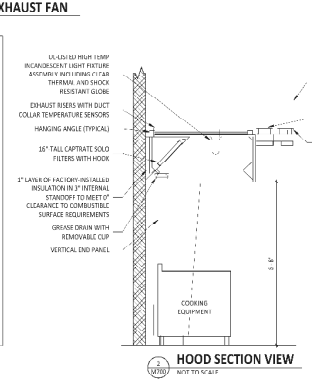
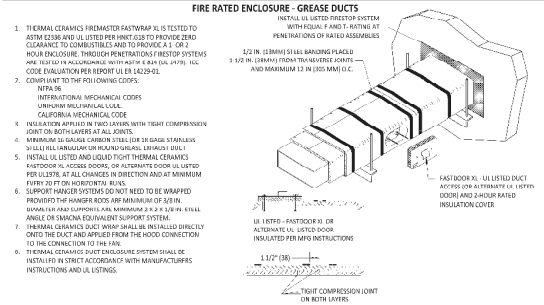
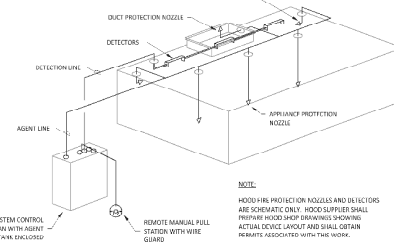
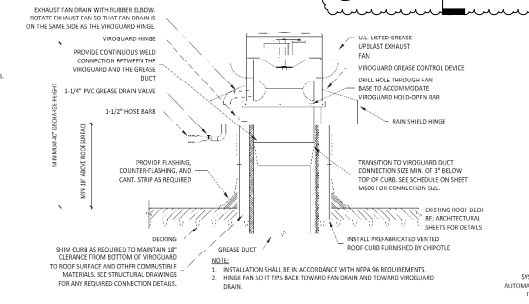
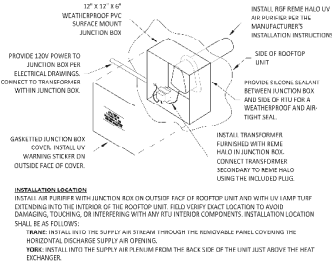
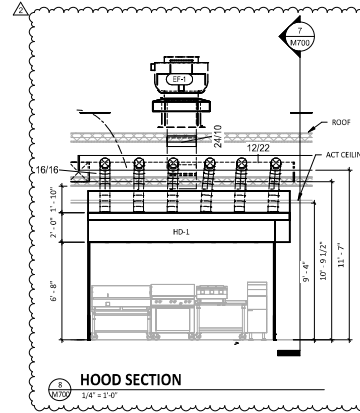
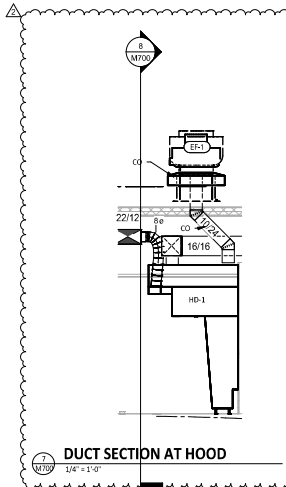
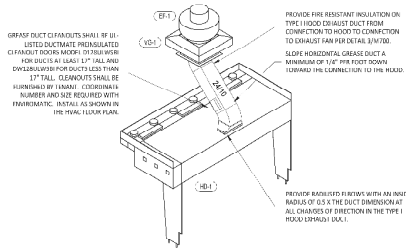
Issue Reason:
13/15/24 PERMIT SET

Revisions:
2 03/11/2025 BUILDING COMMENTS

Drawn: _____
Checked: _____
JW
Project No.:
CM0000

Contract:
HVAC PLAN

M100



LINDLE DESIGN GROUP
1125 W. MAIN ST.
LETTA, IL 61248
TEL: 815.309.9125
1764 BLAKE ST.
SHELVILLE, IL 62450
TEL: 618.957.9573
WWW.LINDLEDESIGN.COM



1/17/2018

COPYRIGHT 2014
THIS DOCUMENT IS AN INSTRUMENT OF SERVICE
AND AS SUCH REMAINS THE PROPERTY OF
CHIPOTLE MEXICAN GRILL, INC. PERMISSION FOR
USE OF THIS DOCUMENT IS LIMITED AND CAN BE
EXTENDED ONLY BY WRITTEN AGREEMENT WITH
CHIPOTLE MEXICAN GRILL, INC.

CHIPOTLE
MEXICAN GRILL

CHIPOTLE MEXICAN GRILL, INC.
PO BOX 183566
COLUMBIANA, OH 43018-2566
TELEPHONE: 614.392.2400
INTERNET: WWW.CHIPOTLE.COM

STORE NO.: 5401
CHIPOTLE LAUREL & O'HARA
990 LAUREL ROAD
OAKLEY, CA 94561

Issue/Revised	DATE	PERMIT SET
1	11/25/24	
2	03/11/2025	

Revisions	BUILDING COMMENTS
1	
2	

Drawn: JLV
Checked: JLV

Project No: CM2000
Contract: MECHANICAL DETAILS

CASE
Engineering Inc.
100 W. MAIN ST.
LETTA, IL 61248
TEL: 815.309.9125

M700

STATE OF CALIFORNIA
Mechanical Systems CALIFORNIA ENERGY COMMISSION
CERTIFICATE OF COMPLIANCE **NRCC-MCH-4-E**
 Project Name: Chipotle - Oakley, CA Report Phase: Phase 2 of 8
 Date Prepared: 2024-10-23 10:58:26-01:00

L. DISTRIBUTION (DUCTWORK AND PIPING)
(This table is used to show compliance with mandatory pipe insulation requirements found in L.1.1.1.1 and mandatory requirements found in L.1.1.1.1.1 for duct sealing.)

01	<input type="checkbox"/>	Insulation shall be protected from damage, including that due to sunlight, moisture, equipment maintenance, and wind. Insulation exposed to weather shall be installed with a cover suitable for outdoor service. Insulation covering chilled water piping and refrigerant suction piping located outside the conditioned space shall have a Class I or Class II vapor retarder. All penetrations and joints of which shall be sealed.	
Duct Leakage Testing			
The answers to the questions below apply to the following duct systems:	M100	NR/ Common User: Duct leakage testing shall not exceed 6% per M2.53 required for these systems? Dwelling Units: Total duct leakage of duct system shall not exceed 12% or duct system to outside shall not exceed 6% per RA3.1.4 required for systems? Duct leakage testing per UIC Section 603.2.2 required for these systems?	No --- Yes
11	No	The scope of the project includes only duct systems serving healthcare facilities.	
12	Yes	Duct system provides conditioned air to an occupiable space for a constant volume, single zone, space-conditioning system.	
13	Yes	The space conditioning system serves less than 5,000 ft ² of conditioned floor area.	
14	No	The combined surface area of the ducts is more than 25% of the total surface area of the entire duct system.	
15	No	The scope of the project includes extending an existing duct system, which is connected, insulated or sealed with asbestos.	
16	No	The scope of the project includes an existing duct system that is documented to have been previously sealed as confirmed through field verification and diagnostic testing in accordance with procedures in the Reference Nonresidential Appendix NA2.	
17	Yes	All ductwork and airflows with pressure class ratings shall be constructed to Seal Class A.	
18	No	All ductwork is an extension of an existing duct system.	
19	No	Ductwork serving individual dwelling unit.	
20		< 25 ft of new or replacement space conditioning ducts installed.	
21	R-10	Duct Insulation R-value.	
22	No	Ductwork existing to minimum.	
23	No	Duct System Connected To Altered Space Conditioning System.	

Generated Data/Time: Documentation Software: Energy Code Ace
 Report Version: 2022.0.000 Compliance ID: 235317-1024-0002
 Schema Version: rev 20220101 Report Generated: 2024-10-23 06:58:33

STATE OF CALIFORNIA
Mechanical Systems CALIFORNIA ENERGY COMMISSION
CERTIFICATE OF COMPLIANCE **NRCC-MCH-4-E**
 Project Name: Chipotle - Oakley, CA Report Phase: Phase 7 of 8
 Date Prepared: 2024-10-23 10:58:26-01:00

Q. MANDATORY MEASURES DOCUMENTATION LOCATION
(This table is used to indicate where mandatory measures are documented in the plan set or construction documentation.)

01		02
Compliance with Mandatory Measures documented through MCH	No	Plan sheet or construction document location
Mandatory Measures Note Block		
03		04
Mandatory Measure		Plan sheet or construction document location
Heating Equipment Efficiency per 110.1		M500
Cooling Equipment Efficiency per 110.1		N/A
Furnace Standby Loss Control per 110.2(d)		M1500
Duct Insulation per 120.4		N/A
Direct Pump with Supplemental electric Resistance Heater Controls per 110.2(b)		N/A
The air duct and plenum system is designed per 120.4(c)(1)		M1100
Kitchen range hoods shall be rated for sound in accordance with Section 7.2 of ASHRAE 62.2		M500

Generated Data/Time: Documentation Software: Energy Code Ace
 Report Version: 2022.0.000 Compliance ID: 235317-1024-0002
 Schema Version: rev 20220101 Report Generated: 2024-10-23 06:58:33

STATE OF CALIFORNIA
Mechanical Systems CALIFORNIA ENERGY COMMISSION
CERTIFICATE OF COMPLIANCE **NRCC-MCH-4-E**
 Project Name: Chipotle - Oakley, CA Report Phase: Phase 2 of 8
 Date Prepared: 2024-10-23 10:58:26-01:00

M. COOLING TOWERS
 This section does not apply to this project.

N. DECLARATION OF REQUIRED CERTIFICATES OF INSTALLATION
 Contractors shall have access to the information provided in previous tables of this document. If any correction needs to be changed, please explain why in Table P. Additional Remarks: These documents must be provided to the building inspector during construction and can be found online at <https://www.energy.ca.gov/programs-and-topics/programs/building-energy-efficiency-standards/2022-building-energy-efficiency-4>

Form/Title
 NRCC-MCH-01-E - Must be submitted for all buildings.

O. DECLARATION OF REQUIRED CERTIFICATES OF ACCEPTANCE
 Contractors have been made based on information provided in previous tables of this document. If any correction needs to be changed, please explain why in Table P. Additional Remarks: These documents must be provided to the building inspector during construction and can be found online at <https://www.energy.ca.gov/programs-and-topics/programs/building-energy-efficiency-standards/2022-building-energy-efficiency-4>

Form/Title
 NRCA-MCH-02-A - Outdoor air must be submitted for all newly installed HVAC units. Note: MCH-02-A can be performed in conjunction with MCH-07-A Supply Fan VFD Acceptance (if applicable) since testing activities overlap.
 NRCA-MCH-04-A - Constant volume single zone HVAC. This form does not automatically move to "Yes" if Constant Volume single zone HVAC. R10-1.2

P. DECLARATION OF REQUIRED CERTIFICATES OF VERIFICATION
 There are no NRCC forms required for this project.

Generated Data/Time: Documentation Software: Energy Code Ace
 Report Version: 2022.0.000 Compliance ID: 235317-1024-0002
 Schema Version: rev 20220101 Report Generated: 2024-10-23 06:58:33

STATE OF CALIFORNIA
Mechanical Systems CALIFORNIA ENERGY COMMISSION
CERTIFICATE OF COMPLIANCE **NRCC-MCH-4-E**
 Project Name: Chipotle - Oakley, CA Report Phase: Phase 8 of 8
 Date Prepared: 2024-10-23 10:58:26-01:00

DOCUMENTATION AUTHOR'S DECLARATION STATEMENT
 I certify that this Certificate of Compliance documentation is accurate and complete.

Documentation Author Name: Jack Willberg Documented on Author Signature:

Company: Case Engineering, Inc. Signature Date: 10/23/2024
 Address: 796 Meruga Ct. (FPA) AFIR Certification Identification (if applicable):
 City/State: Folsom/CA 95630 Phone: 926-3492-1600

RESPONSIBLE PERSON'S DECLARATION STATEMENT
 (Verify the following under penalty of perjury, under the laws of the State of California.)

- The information entered on this Certificate of Compliance is true and correct.
- I am duly licensed under Division 9 of the Business and Professions Code to accept responsibility for the building design or system design described on this Certificate of Compliance (responsible design).
- The energy efficiency and performance goals, features, capabilities, components, and materials listed herein for the building or system design described on this Certificate of Compliance conform to the requirements set forth in the applicable California Building Code or other applicable regulatory code.
- The building design features or system design features described on this Certificate of Compliance are consistent with the information provided on other applicable compliance documents, worksheets, calculations, plans and specifications submitted to the authority having jurisdiction for approval with this building permit application.
- I declare that a true and correct copy of this Certificate of Compliance shall be made available to the building inspector and made available to the enforcement agency for all applicable inspections. I understand that a corrected paper copy of this Certificate of Compliance is required to be submitted to the building inspector to the building owner or occupant.

Responsible Design Name: Matthew R. Case Responsible Designer Signature:

Company: Case Engineering, Inc. (Date Signed: 10/23/2024)
 Address: 796 Meruga Ct. (Phone: 926-3492-1600)
 City/State: Folsom/CA 95630



Generated Data/Time: Documentation Software: Energy Code Ace
 Report Version: 2022.0.000 Compliance ID: 235317-1024-0002
 Schema Version: rev 20220101 Report Generated: 2024-10-23 06:58:33



LINGLE DESIGN GROUP
 1764 BLAKE ST
 SUITE 100
 OAKLEY, CA 94621
 WWW.LINGLEDESIGN.COM



STORE NO.: 5401
 CHIPOTLE LAUREL & O'HARA
 990 LAUREL ROAD
 OAKLEY, CA 94621

Issue Record:
 11/25/24 PERMIT SET

Drawn: JW
 Checked: JW

Project No: CMGXXX
 Content:

MECHANICAL T-24



M801

EXHAUST FAN INFORMATION - JOB#6820706

FAN UNIT NO.	TAG	QTY	FAN UNIT MODEL #	MANUFACTURER	CFM	ESP	RPM	MOTOR ENC.	HP	BHP	PHASE	VOLTS	FLA	DISCHARGE VELOCITY	WEIGHT (LBS)	SCORE
1	EF-1	1	BB0801A	CAPTIVE	2050	1.450	1700	TEFC PREMIUM	0.800	12.700	3	200	7.0	387 FPM	179	15.0
2	EF-2	1	BB0801A	CAPTIVE	150	0.680	1290	TEFC-NEMA	0.250	0.250	1	115	3.0		50	4.2

MHA FAN INFORMATION - JOB#6820706

FAN UNIT NO.	TAG	QTY	FAN UNIT MODEL #	BLOWER	HOUSING	MIN CFM	DESIGN CFM	ESP	RPM	MOTOR ENCL.	HP	BHP	PHASE	VOLTS	FLA	NCA	KOP	EVA ¹ FLOW RATE (GAL/MIN)	EVAP COOLER ENTERING WB TEMP	EVAP COOLER LEAVING WB TEMP	EVAP COOLER ENTERING WB TEMP	EVAP COOLER LEAVING WB TEMP	WEIGHT (LBS)	SCORE
3	MAL-1	1	AI-D250-150	150H-1-MOD	AI-D250	1000	1300	0.500	1597	100% NEMA	1.000	0.680	3	208	3.1	35A	15A	2.5	92.0F	76.0F	-10F	-12F	714	12.8

GAS FIRED MAKE-UP AIR UNITS

FAN UNIT NO.	FAN	INPUT BTUK	OUTPUT BTUK	TEMP. INLET	TEMP. OUTLET	MAXIMUM INPUT GAS PRESSURE	MAXIMUM INPUT GAS FLOW	BURNER EFFICIENCY	
3	MAL-1	70000	71500	50°F		2 IN. W.C.	14 IN. W.C.	NATURAL	90%

FAN OPTIONS

FAN UNIT NO.	TAG	QTY	DESCRIPTION
1	EF-1	1	GREASE BOX
		1	REMOVE HOSE KIT LABEL FROM THE FAN BASE
		1	2 YEAR PARTS WARRANTY
2	EF-2	1	1 1/2" JEE DAMPER
		1	LOW VIBRATION PACKAGE - MANUAL OR 0-10VDC REFERENCE SPEED CONTROL - RVC - VEECO MOTOR, DCV ROTATION
		1	2 YEAR PARTS WARRANTY
3	MAL-1	1	INLET PRESSURE GAUGE, 0-25"
		1	HONEYWELL PRESSURE GAUGE, 0 TO 15" VC
		1	SNP LOSS GAS STRAINER 3/4"
		1	HONEYWELL BACKDRAFT DAMPER FOR AI-D HOUSING - MEETS AMCA CLASS 1A RATING
		1	1 PRELUBRICATED
		1	SIZE 1 TEMPERATURE PORTAL FROM 1000-14000 FPM TOGETHER WITH
		1	1 1/2" JEE DAMPER
		1	SEPARATE WIRING PACKAGE (REQUIRED AND USED ONLY FOR DCV OR PREWIRE WITH VFD) - THREE PHASE ONLY
		1	2 YEAR PARTS WARRANTY
		1	EXTERIOR GAS CONNECTION PROVIDED BY FACTORY WITH QUICK SEAL AND ANTI-ROTATION BRACKET

FAN ACCESSORIES

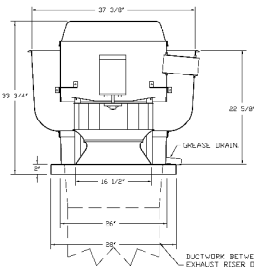
FAN UNIT NO.	TAG	EXHAUST	SUPPLY
		GRAVITY DAMPER	GRAVITY DAMPER
1	EF-1	YES	NO
2	EF-2	YES	NO
3	MAL-1	NO	YES

CURB ASSEMBLIES

NO.	ON FAN	TAG	WEIGHT	ITEM	SIZE
1	# 1	EF-1	39 LBS	CURB	26.500"W X 26.500"D X 25.000"H VENTED
2	# 2	EF-2	29 LBS	CURB	17.500"W X 17.500"D X 26.000"H
3	# 3		75 LBS	CURB	26.000"W X 26.000"D X 26.000"H INSULATED
4	# 4			RAIL	4.000"W X 4.000"D X 36.000"H

UNIT NUMBER	HQ #	HQ LOCATION	TEMP AVERAGING	MODBUS ADDRESS
FAN #3	1M	R1	INT	INT
			NET AVERAGE	NO

FAN #1 BB0801A - EXHAUST FAN (EF-1)



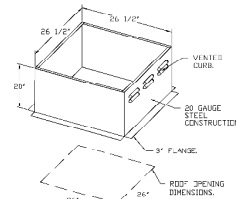
FEATURES

- DIRECT DRIVE CONSTRUCTION AND BELT/FLYWHEELS
- ROOF MOUNTED FANS
- RECTANGULAR HOODS
- W/TAKE THE W/TAKE AND W/TAKE
- VARIABLE SPEED CONTROL
- INTERNAL WIRING
- THERMAL OVERLOAD PROTECTION (GENIE PHASE)
- HIGH HEAT EXHAUSTION (GENIE PHASE)
- W/TAKE (1) ANTI-ROTATION BRACKET
- MEETS ALL SAFETY REQUIREMENTS

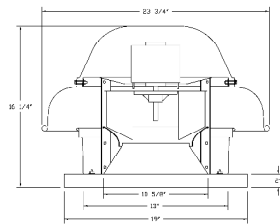
GENERAL INFORMATION:
 EXHAUST FAN MUST OPERATE CONTINUOUSLY WHILE EXHAUSTING AIR AT 200° (250°) UNTIL ALL FAN PARTS HAVE COOLED DOWN. FAILURE TO FOLLOW ANY OF THESE INSTRUCTIONS WILL VOID THE WARRANTY.
 EXHAUST FAN MUST OPERATE CONTINUOUSLY WHILE EXHAUSTING HURRICANE FORCE WINDS AT 200° (250°) UNTIL ALL FAN PARTS HAVE COOLED DOWN. FAILURE TO FOLLOW ANY OF THESE INSTRUCTIONS WILL VOID THE WARRANTY.

OPTIONS

- GREASE BOX
- REMOVE HOSE KIT LABEL FROM THE FAN BASE
- 2 YEAR PARTS WARRANTY



FAN #2 BB0801A - EXHAUST FAN (EF-2)

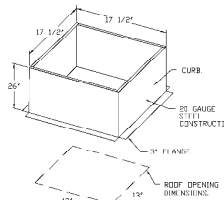


FEATURES

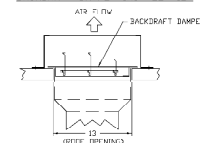
- DIRECT DRIVE CONSTRUCTION AND BELT/FLYWHEELS
- ROOF MOUNTED FANS
- RECTANGULAR HOODS
- SAFETY DISCONNECT
- STAINLESS STEEL SCREEN
- SPEED CONTROL
- THERMAL OVERLOAD PROTECTION (GENIE PHASE)

OPTIONS

- 1 1/2" JEE DAMPER
- LOW VIBRATION PACKAGE - MANUAL OR 0-10VDC REFERENCE SPEED CONTROL - RVC - VEECO MOTOR, DCV ROTATION
- 2 YEAR PARTS WARRANTY



BACKDRAFT DAMPER INSTALLATION



REVISIONS

NO.	DATE	DESCRIPTION
1		

DATE: 7/16/2024
 DWG.#: 0020706
 DRAWN BY: [Signature]
 SCALE: 3/4" = 1'-0"
 MASTER DRAWING

SHEET NO. 2

CHIPOTLE STOCK UNITS - EVAP
 RALPH, NC, 27704

DATE: 7/16/2024
 DWG.#: 0020706
 DRAWN BY: [Signature]
 SCALE: 3/4" = 1'-0"
 MASTER DRAWING

SHEET NO. 2

CHIPOTLE STOCK UNITS - EVAP
 RALPH, NC, 27704

DATE: 7/16/2024
 DWG.#: 0020706
 DRAWN BY: [Signature]
 SCALE: 3/4" = 1'-0"
 MASTER DRAWING

SHEET NO. 2

CHIPOTLE STOCK UNITS - EVAP
 RALPH, NC, 27704

DATE: 7/16/2024
 DWG.#: 0020706
 DRAWN BY: [Signature]
 SCALE: 3/4" = 1'-0"
 MASTER DRAWING

SHEET NO. 2

CHIPOTLE STOCK UNITS - EVAP
 RALPH, NC, 27704

DATE: 7/16/2024
 DWG.#: 0020706
 DRAWN BY: [Signature]
 SCALE: 3/4" = 1'-0"
 MASTER DRAWING

SHEET NO. 2



STORE NO.: 5401
 CHIPOTLE LAUREL & O'HARA
 990 LAUREL ROAD
 OAKLEY, CA 94561

DATE: 7/16/2024
 DWG.#: 0020706
 DRAWN BY: [Signature]
 SCALE: 3/4" = 1'-0"
 MASTER DRAWING

SHEET NO. 2

CHIPOTLE STOCK UNITS - EVAP
 RALPH, NC, 27704

DATE: 7/16/2024
 DWG.#: 0020706
 DRAWN BY: [Signature]
 SCALE: 3/4" = 1'-0"
 MASTER DRAWING

SHEET NO. 2

CHIPOTLE STOCK UNITS - EVAP
 RALPH, NC, 27704

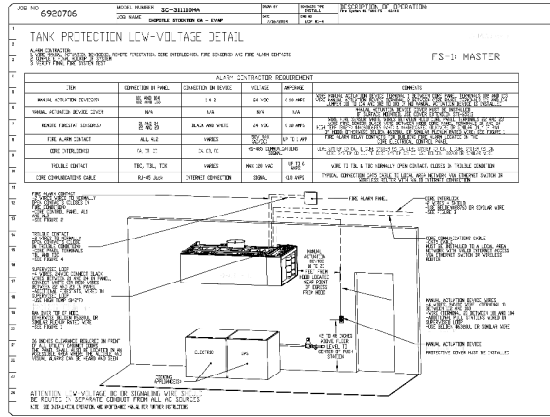
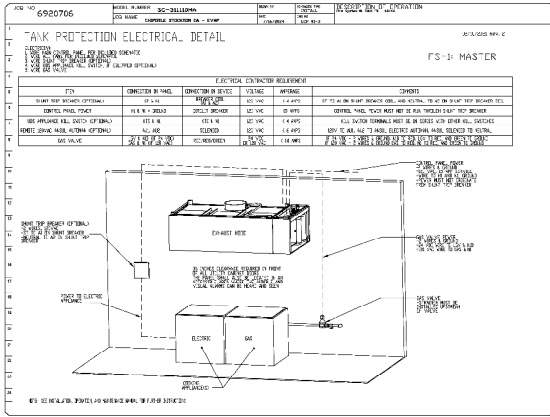
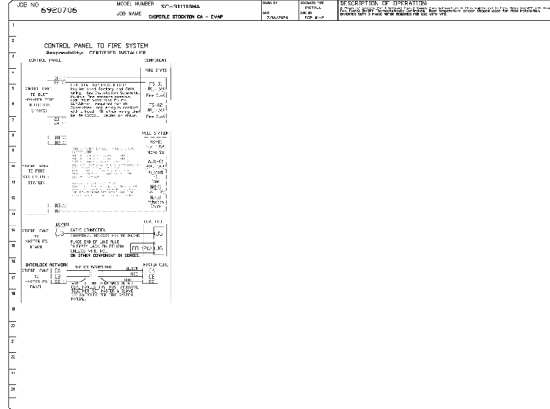
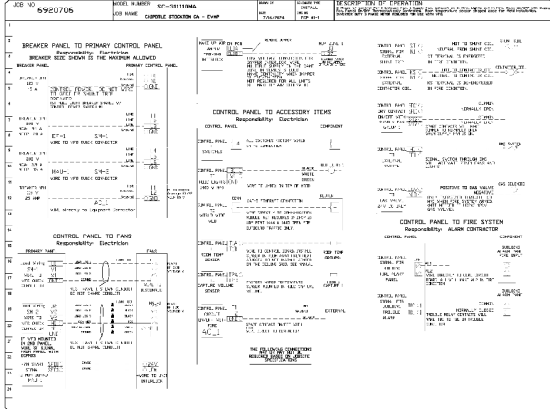
DATE: 7/16/2024
 DWG.#: 0020706
 DRAWN BY: [Signature]
 SCALE: 3/4" = 1'-0"
 MASTER DRAWING

SHEET NO. 2



ELECTRICAL PACKAGE - 7006920706

NO	TRG	PROFILING #	LOCATION	QUANTITY	UPFITTER	3 AND 4 AND 5 AND 6 AND 7 AND 8
1	SC-BL/BLK	1	1 UNIT	1 UNIT	1 UNIT	1 UNIT



REVISIONS

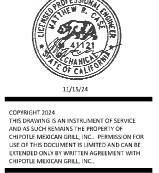
NO.	DATE	DESCRIPTION
1		

CAPTIVE
 Highwoods Group
 16411 Parkwood Blvd., Raleigh, NC 27618
 PHONE: (919) 973-1000 FAX: (919) 973-1001 EMAIL: csp@highwoods.com

CHIPOTLE SIOCKTUN CA - EWP
 RALCIGU, NC, 27604

DATE: 7/16/2024
DWG.#: 6920706
SCALE: 3/4" = 1'-0"
MASTER DRAWING

SHEET NO.
 5



STORE NO.: 5401
 CHIPOTLE LAUREL & O'HARA
 990 LAUREL ROAD
 OAKLEY, CA 94561

Issue Record:

DATE	PERMIT SET
11/25/24	

Revisions:

NO.	DATE	DESCRIPTION
2	03/11/2025	BUILDING COMMENTS

Drawn: _____
 JW

Checked: _____
 JW

Project No:
 CMG00X

Contract:
 HOOD SHEETS



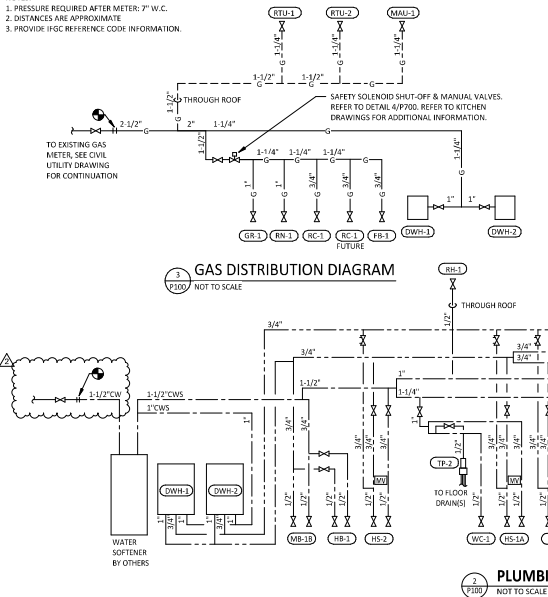
TABLE TO CALCULATE SUPPLY FIXTURE UNITS			
PLUMBING FIXTURE	SUPPLY FIXTURE UNITS	NUMBER OF FIXTURES	TOTAL SUPPLY FIXTURE UNITS
WATER CLOSET	2.5	2	5.0
LAVATORY	1.0	2	2.0
HAND SINK	1.5	4	6.0
PREP SINK	4.0	1	4.0
MOP SINK	3.0	1	3.0
HOSE BIBB	2.5	1	2.5
3 COMPARTMENT SINK	5.0	1	5.0
DISHWASHER	2.5	1	2.5
	TOTAL SUPPLY FIXTURE UNITS		27.50

WATER FIVE SIZE = ***

TABLE TO CALCULATE HOT WATER GPM (TANKLESS)							
INCOMING WATER TEMPERATURE (AVERAGE GROUND WATER TEMP) = 62°							
HOT WATER TEMPERATURE = 140°							
TEMPERATURE RISE = 78°							
PLUMBING FIXTURE	TOTAL FIXTURE OR FAUCET GPM	MIXED TEMPERATURE	AVERAGE WATER GPM PER FIXTURE OR FAUCET	NO. OF FIXTURES OR FAUCETS	FULL HOT WATER FLOW (GPM)	DESIGNED HOT WATER FLOW (GPM)	
SINK/MOP SINK	2.0	140°	2.00	1	2.00	2.00	
DISHWASHER	3.0	140°	3.00	1	3.00	1.50	
MOP SINK	3.0	140°	3.00	1	3.00	0.00	
LAVATORY	1.2	110°	0.74	2	1.48	0.64	
PREP SINK	1.4	140°	1.35	1	1.35	1.35	
HAND SINK	2.0	110°	1.29769	4	4.82	4.92377	
	FULL HOT WATER FLOW FOR ALL FIXTURES RUNNING =					16.83 GPM	
	DESIGNED HOT WATER GALLONS PER MINUTE =					5.3 GPM	

CONNECTED GAS LOAD			
FIXTURE	TAG	MBH	EQUIVALENT LENGTH FROM METER [FT]
WATER HEATER	DWH-1	199	95
WATER HEATER	DWH-2	199	95
FRYER	FB-1	90	85
GRIDDLE	GR-1	120	95
MAKEUP AIR UNIT	MAU-1	225	70
RICE COOKER	RC-1	52	90
RICE COOKER (FUTURE)	RC-1	33	90
RANGE	RN-1	192	85
KITCHEN ROOFTOP UNIT	RTU-1	180	50
DINING ROOM ROOFTOP UNIT	RTU-2	240	65
GRAND TOTAL	1511	MAX: 95	

- NOTES:
 1. PRESSURE REQUIRED AFTER METER: 7" W.C.
 2. DISTANCES ARE APPROXIMATE
 3. PROVIDE HGC REFERENCE CODE INFORMATION.



PLUMBING SUPPLY PLAN NOTES

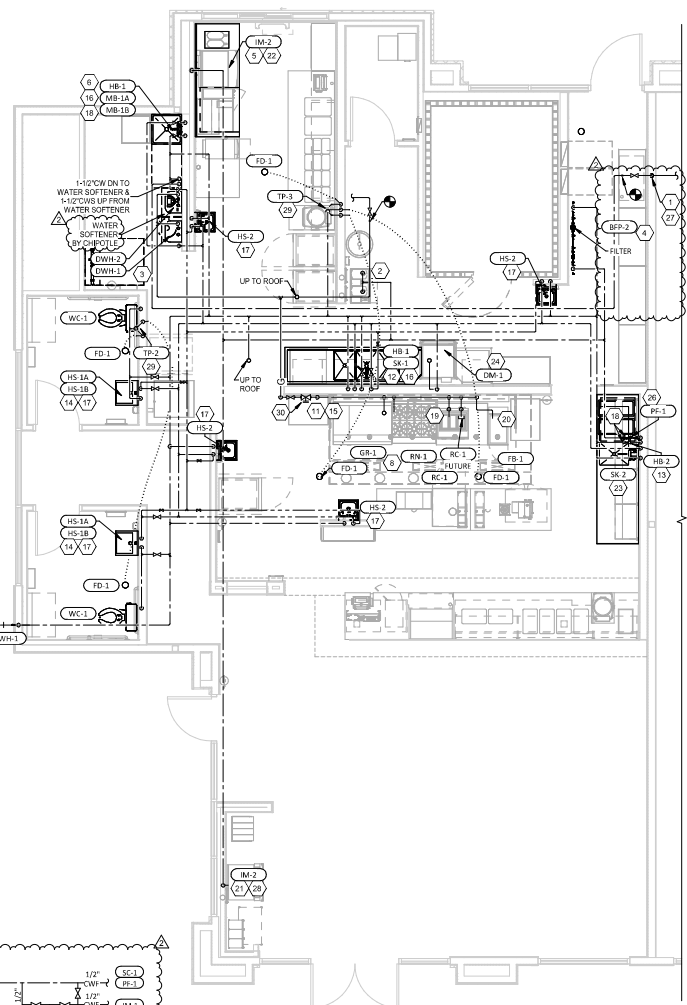
- SEE CIVIL UTILITY PLAN FOR CONTINUATION OF EXISTING 1.1/2" LANDLORD PROVIDED DOMESTIC WATER SERVICE.
- PROVIDE 1/2" FILTERED WATER TO THE BAG IN BOX SODA CARBONATOR AT 120" AFF. SODA CARBONATOR SHALL HAVE AN INTEGRAL ASSE 1002-RATED CARBONATED BEVERAGE BACKFLOW PREVENTION DEVICE.
- PROVIDE WATER HEATERS DWH-1 AND DWH-2 PER DETAIL 1/7/200.
- PROVIDE WATER FILTERS MOUNTED TO WALL PER DETAIL 1/19/200. PROVIDE 1/2" SUPPLY PIPES FROM FILTERS TO ICE MAKER AND SODA CARBONATOR AS SHOWN.
- PROVIDE 1/2" FILTERED WATER ROUGH-IN TO THE ICE MAKER AT 50" AFF. PROVIDE 6' LONG STAINLESS STEEL FLEXIBLE BRAIDED WASHING MACHINE WATER CONNECTOR WITH MINIMUM 0.43" ID (BRASCRAFT S112-72WA F OR EQUAL) FOR FINAL CONNECTION TO ICE MAKER.
- PROVIDE DOMESTIC WATER ROUGH-INS FOR THE MOP BASIN FAUCET AT 36" AFF. PROVIDE DOMESTIC WATER ROUGH-INS FOR THE CHEMICAL DISPENSER FAUCET (HB-1) AT 64" AFF. DIRECTLY ABOVE THE MOP BASIN FAUCET. SEE ARCHITECTURAL ELEVATION FOR ADDITIONAL INFORMATION.
- PROVIDE NEW GAS METER. SEE CIVIL UTILITY PLAN FOR ON-SITE GAS ROUTING.
- PROVIDE GAS CONNECTIONS TO THE COOKING EQUIPMENT PER DETAIL 7/9/200.
- NOT USED.
- NOT USED.
- REFER TO ARCHITECTURAL DRAWINGS FOR PAINTING OF INTERIOR AND EXTERIOR EXPOSED GAS PIPE.
- PROVIDE DOMESTIC WATER ROUGH-INS FOR THE CHEMICAL DISPENSER FAUCET (HB-1) AT 52" AFF. SEE ARCHITECTURAL ELEVATION FOR ADDITIONAL INFORMATION.
- PROVIDE DOMESTIC WATER ROUGH-INS FOR THE VICTORY WASH DISPENSER FAUCET (HB-2) AT 52" AFF. SEE ARCHITECTURAL ELEVATION FOR ADDITIONAL INFORMATION.
- PROVIDE RESTROOM HAND SINK WALL CARRIER IN WALL PER PLUMBING SCHEDULE. INSTALL THERMOSTATIC MIXING VALVE FURNISHED WITH HAND FAUCET SECURED TO WALL BELOW HAND SINK. SET TEMPERATURE TO 110°. ALL HAND SINK PIPING AND ACCESSORIES SHALL BE FULLY CONTAINED DIRECTLY BELOW HAND SINK.
- PROVIDE MANUAL SHUT OFF VALVE FOR GAS LINE ABOVE AUTOMATIC EMERGENCY FUEL SHUT OFF VALVE IN RISER. SEE GAS RISER DIAGRAM ON THIS SHEET AND DETAIL 4/7/200.
- CONNECT CHEMICAL DISPENSER TO HB-1. CHEMICAL DISPENSER HAS AN INTEGRAL AIR GAP AS SHOWN IN DETAIL 10/7/200.
- PROVIDE ASSE 10161010 POINT-OF-USE THERMOSTATIC MIXING VALVE, WATTS LHS-8, ON WATER SUPPLY TO KITCHEN HAND SINKS / LAVATORIES. PROVIDE ANGLE STOP BELOW SINK. PASTER MARKING VALVE TO WALL, AND MAKE FINAL CONNECTION FROM ANGLE STOPS TO MIXING VALVE AND FROM MIXING VALVE TO FAUCET USING BRAIDED STAINLESS STEEL HOSE. ADJUST MIXING VALVE FOR A DISCHARGE TEMPERATURES OF APPROXIMATELY 110°.
- PROVIDE ACCESSIBLE VALVE IN WATER SUPPLY TO FIXTURE AS SHOWN.
- PROVIDE GAS CONNECTION TO THE RICE COOKER PER DETAIL 6/7/200. ADD EXTRA GAS STUB FOR FUTURE RICE COOKER CONNECTION.
- PROVIDE GAS ROUGH-IN TO FRYER BEHIND RICE COOKER TABLE SO THAT VALVES AND DIRT LEG ARE ACCESSIBLE ONCE FRYER IS SECURED INTO PLACE. REFER TO DETAILS 6/7/200 AND 7/7/200.
- PROVIDE 1/2" FILTERED WATER ROUGH-IN TO THE ICE MAKER AT 24" AFF. PROVIDE 6' LONG STAINLESS STEEL FLEXIBLE BRAIDED WASHING MACHINE WATER CONNECTOR WITH MINIMUM 0.43" ID (BRASCRAFT S112-72WA F OR EQUAL) FOR FINAL CONNECTION TO ICE MAKER.
- INSTALL RFI MSD ICE MAKER SANITIZER FURNISHED BY TUV PER CHIPOTLE'S INSTALLATION INSTRUCTIONS.
- PROVIDE 3/4" DOMESTIC HOT AND COLD WATER ROUGH-INS FOR THE PREP SINK (SK-2) FAUCET AT 24" AFF TO ALLOW FOR THE VICTORY WAS CHEMICAL COCK TO BE INSTALLED DIRECTLY BELOW THE PREP SINK BASIN.
- PROVIDE 3/4" HOT WATER TO THE DISH MACHINE, MAKING FINAL CONNECTION USING 3/4" COPPER PIPE ONCE DISH MACHINE IS IN ITS FINAL LOCATION (FEASIBLE CONNECTION IS NOT ACCEPTABLE). PROVIDE WATER HAMMER ARRESTOR ON HOT WATER LINE. PROVIDE AN ACCESSIBLE SHUT-OFF VALVE AND UNION BELOW THE DISH MACHINE AND INSTALL THE STRAINER AND PRESSURE REDUCING VALVE FURNISHED WITH THE DISH MACHINE IN AN ACCESSIBLE LOCATION AT THE CONNECTION TO THE UNIT.
- NOT USED.
- PROVIDE FILTERED DOMESTIC WATER ROUGH-IN FOR THE SPEED FILL POT FILLER FAUCET (FP-1) AT 40" AFF. SEE ARCHITECTURAL ELEVATION FOR DETAIL.
- ROUTE TO CONNECT TO IL PROVIDED 1.1/2" WATER SERVICE AND EXISTING MAIN BACKFLOW PREVENTER SERVING OVERALL BUILDING. SEE SITE UTILITY PLANS AND ARCHITECTURAL PLANS FOR EXACT LOCATION. VERIFY EXACT SIZE, ROUTING, DELIVERY PRESSURE, AND WATER METER INSTALLATION REQUIREMENTS WITH LANDLORD AND LOCAL WATER UTILITY COMPANY PRIOR TO ANY WORK. PROVIDE AND INSTALL A BOOSTER PUMP AT LANDLORD'S EXPENSE IF WATER PRESSURE IS UNABLE TO BE PROVIDED AT MINIMUM OF 45 GPM AT 60 PSI. BOOSTER PUMP SHALL BE LOCATED IN A MUTUALLY AGREED UPON LOCATION WHERE THE UNIT CAN BE PROPERLY MAINTAINED AND SERVICED BY LANDLORD. IF EXISTING MAIN BACKFLOW PREVENTER SERVING OVERALL SUPPLY PIPING SYSTEM TO BUILDING IS NOT FOUND, PROVIDE NEW MAIN BACKFLOW PREVENTER WITHIN TENANT SPACE, SOLELY FOR TENANT USE. COORDINATE INSTALLATION LOCATION WITH LANDLORD AND ENGINEER.
- INSTALL RFI MSD ICE MAKER SANITIZER FURNISHED BY TUV PER CHIPOTLE'S INSTALLATION INSTRUCTIONS. LOCATE MSD BELOW UTILITY COUNTERTOPS IN A LOCATION THAT DOES NOT INTERFERE WITH THE ROLLING BACK BELOW THE UTILITY COUNTER.
- PROVIDE ACCESSIBLE TRAP PRIMER ABOVE LAY-IN CEILING AS SHOWN. INSTALL PER MANUFACTURER'S INSTALLATION INSTRUCTIONS WITH A SERVICE VALVE AT THE TRAP PRIMER INLET. PROVIDE 1/2" DISTRIBUTION PIPES TO FLOOR DRAIN TRAP PRIMER CONNECTIONS AS SHOWN. HORIZONTAL DISTRIBUTION PIPING SHALL HAVE CONTINUOUS SLOPE TO THE FLOOR DRAINS.
- GAS DOWN TO KITCHEN EQUIPMENT HEADER. PROVIDE AUTOMATIC EMERGENCY FUEL SHUT-OFF VALVE IN RISER. EMERGENCY SHUT OFF INTERLOCKED TO HOOD FIRE SUPPRESSION SYSTEM. COORDINATE EXACT LOCATION WITH THE KITCHEN HOOD VENDOR AND LOCAL AHJ REQUIREMENTS.

NOTE:
 COORDINATE ALL PLUMBING LOCATIONS WITH ELECTRICAL LOCATIONS. WATER LINES NOT TO BE INSTALLED ABOVE RECEPTACLES.

NOTE:
 WATER SUPPLY SYSTEMS THAT HAVE QUICK CLOSING VALVES INSTALLED THEREIN AS FUSION VALVE WATER CLOSERS AND SENSOR FAUCETS, SHALL HAVE DEVICES INSTALLED AS CLOSE TO THE FIXTURES AS POSSIBLE TO CONTROL THE EFFECTS OF WATER HAMMER.

NOTE:
 ENSURE ALL TRAP PRIMERS ARE ACCESSIBLE. DO NOT LOCATE ABOVE ANY LARGE PIECES OF EQUIPMENT.

HOT WATER BALANCING NOTE:
 PLUMBING CONTRACTOR SHALL PROVIDE ZONING VALVE RECONFIGURED BY AUTOMATIC VARIABLE SET POINT BALANCING VALVE OR EQUIVALENT AT EACH HOT WATER CIRCULATION CONNECTION TO THE HOT WATER SYSTEM. ENSURE VALVES ARE INSTALLED IN AN ACCESSIBLE LOCATION FOR ADJUSTMENT AND SERVICE. SYSTEM SHALL BE SET FOR A 5 DEGREE TEMPERATURE DIFFERENCE FROM WATER HEATER SET POINT. CONSULT WITH THE CIRCULATING PUMP MANUFACTURER FOR ADDITIONAL CONTROLS AND BALANCING INSTRUCTION.



COPYRIGHT 2014
 THE INFORMATION IS AN INSTRUMENT OF SERVICE AND AS SUCH REMAINS THE PROPERTY OF CHIPOTLE MEXICAN GRILL, INC. PERMISSION FOR USE OF THIS DOCUMENT IS LIMITED AND CAN BE EXTENDED ONLY BY WRITTEN AGREEMENT WITH CHIPOTLE MEXICAN GRILL, INC.

CHIPOTLE MEXICAN GRILL, INC.
 CHIPOTLE MEXICAN GRILL, INC.
 990 LAUREL ROAD
 OAKLEY, CA 94561
 TELEPHONE: 925.332.2500
 INTERNET: WWW.CHIPOTLE.COM

STORE NO.: 5401
 CHIPOTLE LAUREL & O'HARA
 990 LAUREL ROAD
 OAKLEY, CA 94561

Issue/Revision	DATE	PERMIT SET
1	03/17/2015	BUILDING COMMENTS
2	08/04/2015	BUILDING COMMENTS #2

Drawn: []
 Checkd: []
 TA: NH

Project No:
 CM600X

Contract:
 PLUMBING PLAN
 WATER & GAS



P100