

### KEY NOTES

- MOUNT REMOTE SENSOR ON WALL AT 5'-0" AFF AND ROUTE WIRING BACK TO SUNCOAST TEMP CONTROL PANEL. SENSOR IN KITCHEN TO BE MOUNTED AT 6'-7" AFF TO TOP OF SENSOR.
- C-14 MOUNTED INSIDE CABINETS SERVING SCJ PLENUM. SEE DETAIL 2/M2-1.
- BRANCH TAKE-OFFS ARE NOT TO BE LOCATED CLOSER THAN 3'-0" FROM ANY ELBOW INCLUDING THE SUPPLY AIR DROP FROM CLRB.
- TRANSITION IN VERTICAL DROP FROM FULL SIZE OF CLRB OPENING TO SIZE SHOWN. PROVIDE TURNING VANES IN ELBOW.
- TRANSITION IN VERTICAL DROP FROM FULL SIZE OF CLRB OPENING TO SIZE SHOWN WITH CLRB. TERMINATE DROP 0'-6" ABOVE CEILING.
- R/A DUCT DROP TO BE FULL SIZE OF CLRB CONNECTION. TERMINATE DROP 0'-6" ABOVE CEILING.
- MOUNT LENNOX HUMIDITY SENSOR ON WALL ABOVE SPACE TEMP SENSOR AND ROUTE WIRING TO UNIT ON ROOF. LOCATE LENNOX HUMIDITY SENSOR SERVING ACM BESIDE TEMP SENSOR.
- LOCATE A MINIMUM OF 10 FT FROM PARAPETS. SEE DETAIL 3/M3-1 FOR ORIENTATION OF HINGE SIDE OF FAN ON CLRB.
- EXTEND 60X18 RETURN DUCT BELOW STRUCTURE TO ACCOMMODATE 14" START COLLARS.
- MOUNT REMOTE SENSOR FOR PLAYGROUND 10'-4" AFF. ROUTE WIRING BACK TO SUNCOAST TEMP CONTROL PANEL.
- SUPPLY AND RETURN DUCTWORK TO BE LOCATED IN THE UPPER HALF OF THE AVAILABLE SPACE ABOVE THE CEILING ON THE STICHER SIDE OF THE WALL. CONDUIT AND PIPING TO BE LOCATED IN THE LOWER HALF OF THE AVAILABLE SPACE ABOVE THE CEILING.
- MECHANICAL CONTRACTOR TO ADJUST PATTERN DEFLECTORS TO THROW STRAIGHT DOWN.
- AIR CURTAIN MOUNTED OVER DOOR HEADER AT 7'-5" AFF TO BOTTOM OF UNIT. LOCATE MAGNETIC CONTACT TYPE MICROSWITCH IN DOOR FRAME ON STRIKE SIDE.
- SEE ELEVATIONS ON M-21 FOR CJ FAN DUCTING REQUIREMENTS.
- 36X20" SUPPLY CLRB OPENING LOCATED AND CUT BY MECHANICAL CONTRACTOR IN SOLID BOTTOM CLRB. PROVIDE TURNING VANES IN ELBOW.
- 18X18" CLRB OPENING LOCATED AND CUT BY MECHANICAL CONTRACTOR IN SOLID BOTTOM CLRB. PROVIDE TURNING VANES IN ELBOW.
- 60X18" RETURN OPENING LOCATED AND CUT BY MECHANICAL CONTRACTOR IN SOLID BOTTOM CLRB. NO TURNING VANES IN ELBOW.
- PROVIDE 8" GALVANIZED COMBUSTION AIR DUCT WITH VENT CAP AND ROOF JACK. OFFSET COMBUSTION AIR DUCT MIN 18" AWAY FROM PARAPET. SEE ARCH ROOF PLAN FOR PARAPET LOCATIONS. WRAP DUCT ABOVE CEILING WITH 1/2" BATT INSULATION AND PROVIDE CHROME ESCUTCHEON AT WALL PENETRATION. TERMINATE COMBUSTION AIR DUCT AT SIDEWALL WITHIN 12" OF CEILING.
- COMBUSTION AIR DUCT TO BE LOCATED IN THE UPPER HALF OF THE AVAILABLE SPACE ABOVE THE CEILING ON THE MULTIPURPOSE ROOM SIDE OF THE WALL. COORDINATE WITH PLUMBING PIPING IN THE LOWER HALF OF THE AVAILABLE SPACE.

### GREASE ACCESS DOOR SCHEDULE

MARK	OPENING SIZE	DOOR SIZE	REMARKS
A	1024 X 16W	1254 X 16W	1
B	524 X 16W	724 X 16W	1

D ACCESS DOORS SHALL BE UL LISTED OR FIELD FABRICATED. REQUIRE NO TOOLS FOR REMOVAL AND MEET THE REQUIREMENTS OF THE CURRENT EDITION OF THE I.M.C. ACCESS DOOR ASSEMBLY SHALL BE WELDED IN PLACE TO THE GREASE EXHAUST DUCT. ACCESS DOORS SHALL BE SECURED WITH THE GREASE ACCESS DOOR LOCKING QUADRANT EQUIVALENT TO THAT MANUFACTURED BY BEYON INDUSTRIES, INC. (800) 382-2491.

### AIR BALANCE SCHEDULE

AIR TYPE	TOTAL CFM
SUPPLY	16140
RETURN	14485
EXHAUST	3975
OUTSIDE AIR	4665
BUILDING POSITIVE PRESSURE	4660

### LEGEND

A-12-400	TYPE - NECK SIZE - CFM	EXHAUST FAN #1 (TTP)
SPIN-IN FITTING WITH MANUAL BALANCING DAMPER, WITHOUT SCOOP	ACH	AIR CONDITIONING UNIT #1 (TTP)
SPIN-IN HARD Ø FLEXIBLE Ø DIFFUSER	RETURNEXHAUST (TTP)	
REMOTE TEMPERATURE SENSOR	SUPPLY DIFFUSER, SO FACE (TTP)	
HUMIDITY SENSOR	PLAN NOTE REFERENCE	
SMOKE DETECTOR	MANUAL VOLUME DAMPER	
DUCT SIZE (REVERSE FOR ELEVATION VIEWS)	DIRECTION OF THROW ON DIFFUSER	
1ST NUMBER - HORIZONTAL DIMENSION 2ND NUMBER - VERTICAL DIMENSION		

### VAPOR MITIGATION COORDINATION

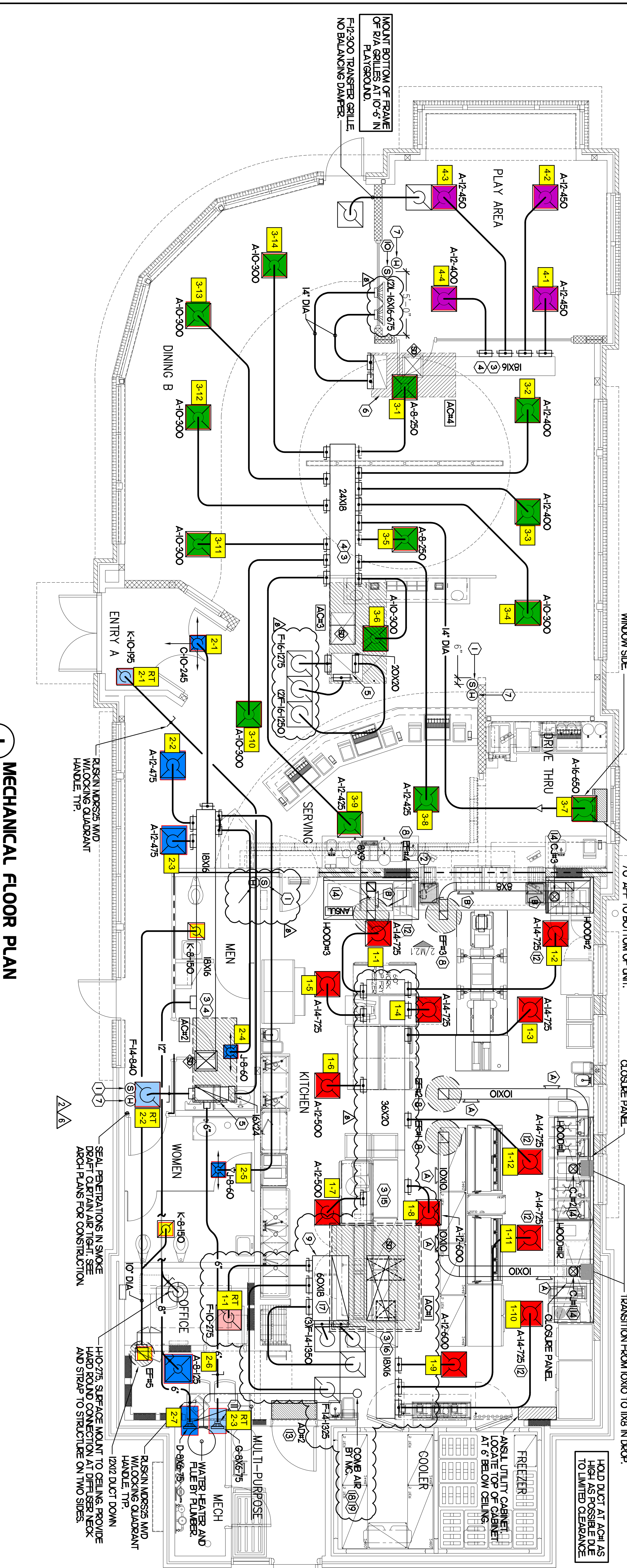
- MECHANICAL CONTRACTOR SHALL COORDINATE HVAC SYSTEM INSTALLATION WITH VAPOR CONTROL SYSTEM INSTALLATION. SEE VAPOR CONTROL, (VOI) DRAWINGS, INCLUDED IN THE FULL DRAWING SET FOR MORE INFORMATION.
- MECHANICAL CONTRACTOR TO VERIFY THAT VAPOR CONTROL SYSTEM TERMINATIONS SHALL NOT BE WITHIN 10'-0" OF ANY OUTSIDE AIR INTAKES. NOTIFY GC IF THIS IS NOT THE CASE.

### LENNOX FRESH AIR TEMPERING SETUP

- INSTALL FRESH AIR TEMPERING KIT WIRING HARNESS AS RECOMMENDED BY LENNOX.
- LOCATE SUPPLY AIR TEMPERATURE SENSOR IN SUPPLY DUCT DOWNSTREAM OF FIRST ELBOW. SECURE WIRING TO DUCT OR STRUCTURE WITH RUBBER COATED CLAMPS. DO NOT RUN WIRING INSIDE DUCT WORK. PROTECT ALL WIRING PENETRATIONS WITH RUBBER GROMMETS.
- CHANGE ROOFTOP UNIT ECO PARAMETER 620 TO A VALUE OF 145. THIS WILL PERMIT THE SUPPLY AIR TEMPERATURE FROM DROPPING BELOW 64F DUE DURING HEATING MODE WHEN THERMOSTAT IS NOT ACTIVE. CALLING FOR HEAT ECO PARAMETER 620 MUST BE CHANGED TO ACTIVATE THE FRESH AIR TEMPERING FEATURE.
- CHANGE ROOFTOP UNIT ECO PARAMETER 621 TO A VALUE OF 21 WHICH WILL MAKE THE DEADBAND VALVE EQUAL 14F.
- CHANGE ROOFTOP UNIT ECO PARAMETER 622 TO A VALUE OF 37 WHICH WILL MAKE THE CYCLE TIME VALVE EQUAL 5 MINUTES.

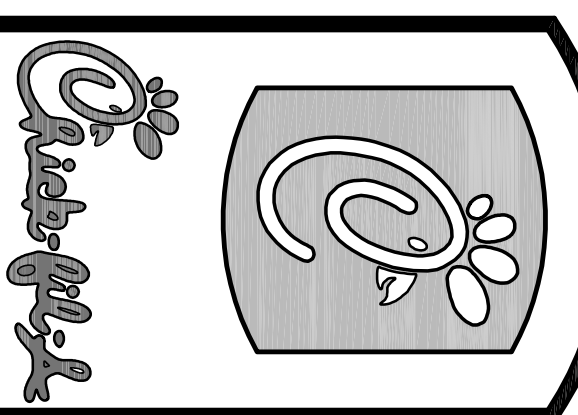
### SHEET NOTES

- DUCT SIZES SERVING DIFFUSERS AND GRILLES ARE SAME SIZE AS DIFFUSER OR GRILLE NECK UNLESS NOTED OTHERWISE.



### MECHANICAL FLOOR PLAN

1/4"=1'-0"



5200 Buffington Rd.  
Atlanta Georgia,  
30349-2998

Revisions:  
Work Date By  
04-07-11 TV  
SIS OWNER  
REVISIONS  
07-01-11  
SIS OWNER  
REVISIONS  
07-11-11  
OWNER REVISION  
HVAC

FRANK TRAHAN, P.E.  
FLORIDA LIC. #FE-19197

AA 003420  
CA 8660  
604 COURTLAND STREET SUITE 100  
ORLANDO, FLORIDA 32810  
ORLANDO, FL 407.645.5008  
FX 407.629.9124

**INTERPLAN** 3711  
ARCHITECTURE  
ENGINEERING  
INTERIOR DESIGN  
PROJECT MANAGEMENT

STORE  
OCALA, FL  
FSU S08

3445 SW COLLEGE RD  
OCALA, FL 34474

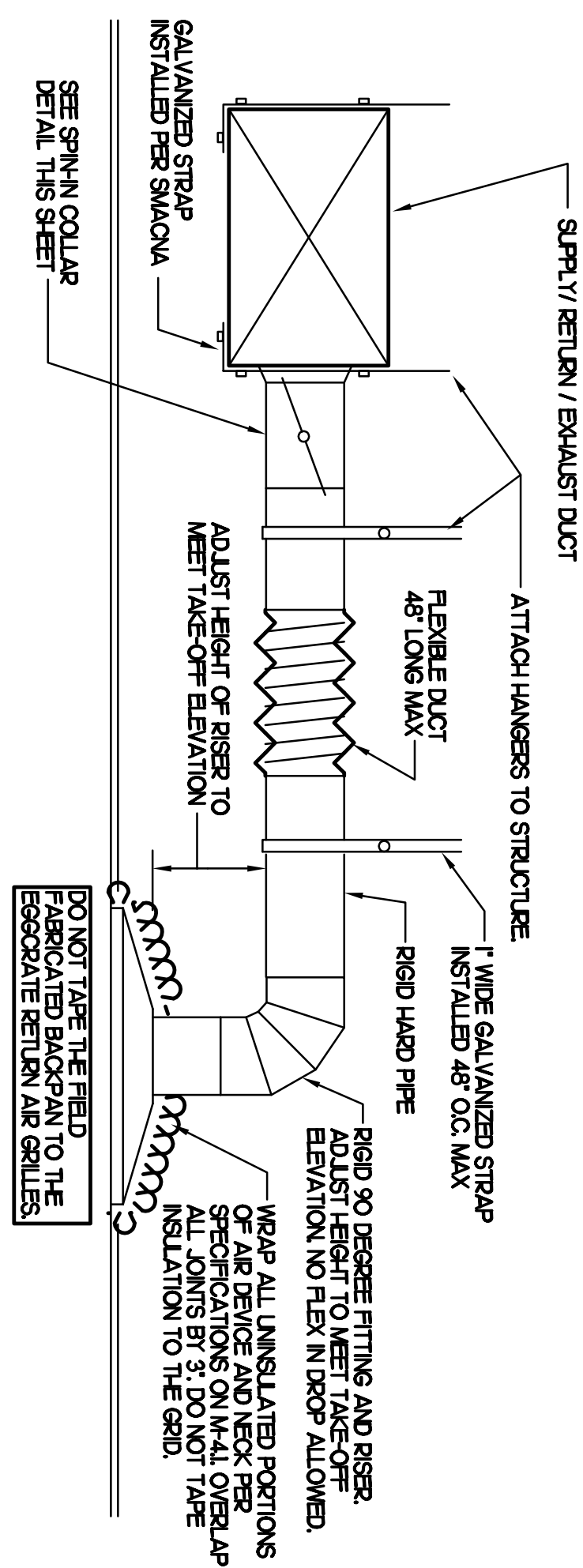
SHEET TITLE  
MECHANICAL  
FLOOR PLAN

VERSIONS: S08N-104  
V5-01  
ISSUE DATE: 10-2010

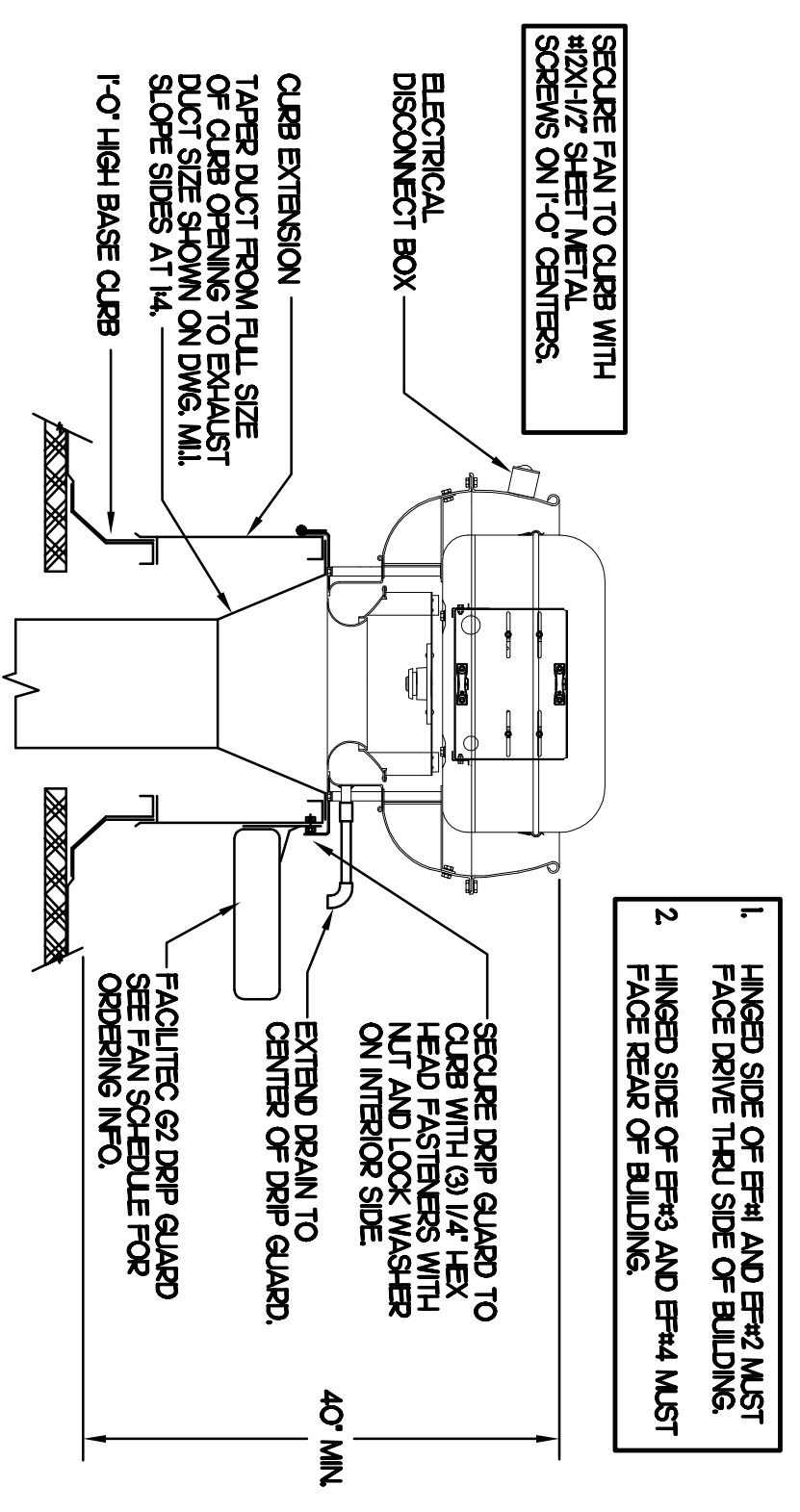
Job No. : 10.0421  
Store : 2367  
Date : 12/2010  
Drawn By :  
Checked By :  
Sheet

**M-11**

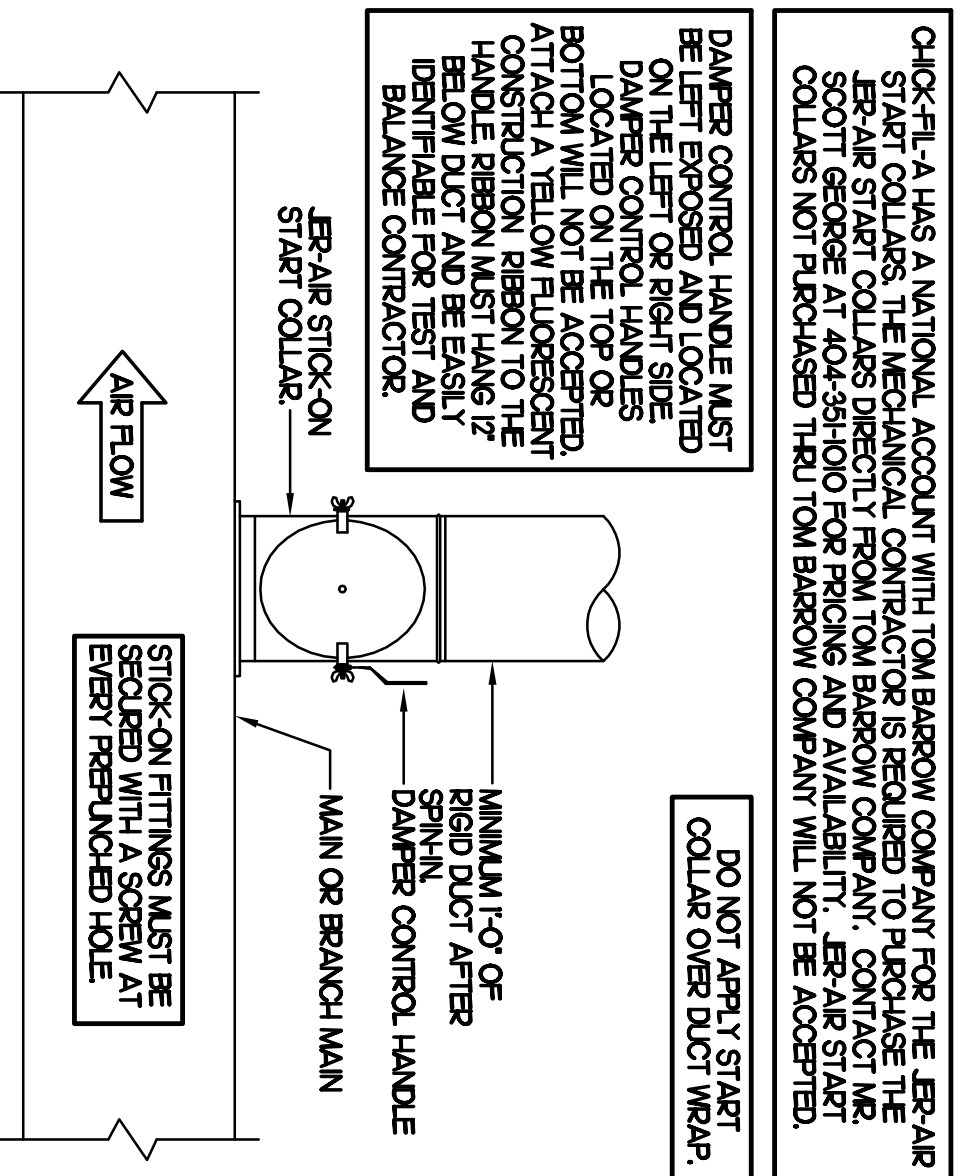




**1 SAG/RAG/GRILLE TAKE-OFF**  
NO SCALE



**3 KITCHEN HOOD EXHAUST FAN**  
NO SCALE



**4 RESTROOM EXHAUST FAN**  
NO SCALE

**2 START COLLAR**  
NO SCALE

MARK	QTY	VELOCITY	HEATING CAP	HP	AREA SERVED	MODEL	MANUFACTURER	REMARKS
AD1	3984	4000	NA	3/4	REAR DOOR	BOC-H-42	POWERED-AIR	124

REMARKS:  
 1) FACTORY PROVIDED WIRING AND LIMIT SWITCH OPERATOR LOCATED ON RIGHT SIDE OF DOOR.  
 2) FACTORY PROVIDED SECONDARY SH-2225 MAGNETIC CONTACT WITH FACTORY INSTALLED LOW VOLTAGE CONTROL IS LOCATED IN AIR DOOR CABINET.  
 3) CHECK-FIT-A HAS A NATIONAL ACCOUNT WITH TOM BARROW COMPANY FOR THE AIR DOORS. THE MECHANICAL CONTRACTOR SHALL PURCHASE THE AIR DOORS DIRECTLY FROM TOM BARROW COMPANY. CONTACT MR. SCOTT GEORGE AT 404-384-0100 FOR PRICING AND AVAILABILITY. AIR DOORS NOT PURCHASED THRU TOM BARROW COMPANY WILL NOT BE ACCEPTED.

MARK	QTY	ESP	IPM	HP	AREA SERVED	MODEL	MANUFACTURER	REMARKS
EP1	1035	.75	1071	1/2	HOOD	18H48	LOREN COOK	12345
EP2	1035	.75	1071	1/2	HOOD	18H48	LOREN COOK	12345
EP3	701	.75	1235	1/4	HOOD	18H48	LOREN COOK	12345
EP4	904	.75	1235	1/4	HOOD	18H48	LOREN COOK	12345
EP5	300	.75	1234	1/8	RESTROOMS	AC20-900384	LOREN COOK	2478930

NOTES:  
 \* GREASE EXHAUST FAN RPM BASED ON 90 DEGREE F AIR AT 1000 FEET ABOVE SEA LEVEL.  
 \* CHECK-FIT-A HAS A NATIONAL ACCOUNT WITH TOM BARROW COMPANY FOR THE FAN/CAB PACKAGE. THE MECHANICAL CONTRACTOR IS REQUIRED TO PURCHASE THE FAN/CAB PACKAGE DIRECTLY FROM TOM BARROW COMPANY. CONTACT MR. SCOTT GEORGE AT 404-384-0100 FOR PRICING AND AVAILABILITY. FANS AND CABS NOT PURCHASED THRU TOM BARROW COMPANY WILL NOT BE ACCEPTED.

REMARKS:  
 1. PROVIDE FACTORY T-O BASE CAB AND EXTENSION.  
 2. PROVIDE FACTORY INSTALLED, PRE-WIRED, NEMA 3 NON-FUSED DISCONNECT.  
 3. PROVIDE AND INSTALL FACILITIES 67 DRIP GUARD.  
 4. PROVIDE FACTORY INSTALLED HELICAL SPRING AUTOMATIC BELT TENSIONER.  
 5. PROVIDE BIRDSCREEN.  
 6. BACKDRAFT DAMPER IN DUCT BY MECHANICAL CONTRACTOR AS SHOWN ON 4M-31.  
 7. STARTER BY ELECTRICAL CONTRACTOR. INTERLOCK WITH LIGHTS BY ELECTRICAL CONTRACTOR.  
 8. PROVIDE 17 HIGH CAB.  
 9. PROVIDE FACTORY INSTALLED AND WIRED SPEED CONTROLLER.

MARK	COOLING CAPACITY (MBH)	HEATING CAPACITY (MBH)	FAN SECTION (CFM)	MODEL	MANUFACTURER	ELECTRICAL DATA	REMARKS						
TOTAL	5835	4920	104	1P	ESP								
AC1	2945	2460	3940	8000	250	1/5	10	18480054	LENKX	2039/60	660	50	13545791012345
AC2	633	475	800	1700	120	1/10	70	18480044	LENKX	2039/60	660	50	13545791012345
AC3	1480	1118	1920	4900	125	5	70	18480034	LENKX	2039/60	660	80	13545791012345
AC4	633	475	800	1700	120	1/10	70	18480044	LENKX	2039/60	660	50	13545791012345

NOTES:  
 \* COOLING CAPACITIES ARE GROSS BASED ON INDOOR ROOM/ROOMING Q-TIP/ROOM SPRTS AND 400 CFM PER TON.  
 \* CHECK-FIT-A MAINTAINS A NATIONAL ACCOUNT WITH LENKX CORPORATION. CONTACT LENKX NATIONAL MECHANICAL CONTRACTOR TO VERIFY LENKX SELECTION WITH CONSTRUCTION DOCUMENTS.

REMARKS:  
 1. PROVIDE DIFFERENTIAL ENTHALPY ECONOMIZER WITH BAROMETRIC EXHAUST.  
 2. PROVIDE 14 HIGH ROOF CAB.  
 3. PROVIDE 0-100% MOTORIZED OUTSIDE AIR DAMPER ASSEMBLY.  
 4. SEE DETAIL 21M1 FOR SETTINGS OF ECO DAMPERS BY T.M.  
 5. PROVIDE FACTORY INSTALLED SUPPLY AIR SERVICE OUTLET.  
 6. PROVIDE FACTORY INSTALLED SUPPLY SIDE SMOKE DETECTOR.  
 7. PROVIDE FACTORY INSTALLED NON-FUSED DISCONNECT.  
 8. PROVIDE 2 VERY THIN AWAY FILTERS.  
 9. PROVIDE HANGING PAGES FOR FILTER ACCESS. FAN MOTOR ACCESS COMPRESSOR ACCESS AND CONTROL.  
 10. ADJUST GAS MANIFOLD PRESSURE AT LOCATIONS WHERE ELEVATION EXCEEDS 2000' ABOVE SEA LEVEL. AS RECOMMENDED BY MANUFACTURER.  
 11. PROVIDE FACTORY COIL LAL GUARD. FIELD INSTALLED.  
 12. PROVIDE FRESH AIR TEMPERING KIT.  
 13. PROVIDE HUMIDITY OPTION WITH FACTORY WALL MOUNTED HUMIDITY SENSOR (STATES OF CA AND AZ EXCLUDED).  
 14. PROVIDE HUMIDITY OPTION WITH FACTORY WALL MOUNTED HUMIDITY SENSOR (STATES OF CA AND AZ EXCLUDED).

MARK	DESCRIPTION	LOCATION	NECK SIZE	FACE SIZE	FRAME TYPE	REMARKS
A	TITUS MODEL RSS-3A ALUMINUM SUPPLY AIR DIFFUSER WITH AIR PATTERN CONTROLLER.	DINING AREA KITCHEN	SEE PLAN	24X24	LAY-N	18
C	TITUS MODEL MOD STEEL SUPPLY AIR DIFFUSER FIELD ADJUSTABLE AIR PATTERN CONTROLLERS.	ENTRY 'A'	14X4	19X9	SUP-FACE	1357
D	TITUS MODEL 2725S DOUBLE DEFLECTION ALUMINUM SIDEWALL SUPPLY GRILLE FRONT BLADE PARALLEL TO SHORT SIDE.	MESH ROOM ELEC ROOM	8X6	10X8	SUP-FACE	1
F	DOWNY MODEL CORP BORGWART RETUR AIR GRILLE WITH REMOVABLE WHITE COKE FACTORY FLAT BACKPAN AND ROUND NECK.	DINING/OFFICE KITCHEN ENTRY 'A'	SEE PLAN	24X24	LAY-N	17
G	TITUS MODEL 56R ALUMINUM SIDEWALL RETURN GRILLE FRONT BLADE PARALLEL TO LONG SIDE.	MESH ROOM ELEC ROOM	8X6	10X8	SUP-FACE	1
H	TITUS MODEL 318-4A ALUMINUM CONCENTRIC ROUND COKE SUPPLY DIFFUSER.	OFFICE	10	18	LAY-N	167
J	TITUS MODEL MOD STEEL SUPPLY AIR DIFFUSER FIELD ADJUSTABLE AIR PATTERN CONTROLLERS.	RESTROOMS	10X0	15X5	SUP-FACE	12357
K	TITUS MODEL P4R STEEL PERFORATED FACE RETURN AIR GRILLE.	RESTROOMS ENTRY 'A'	14X4	16X6	SUP-FACE	147
L	TITUS MODEL 56FL ZERO DEGREE DEFLECTION ALUMINUM SIDEWALL RETURN GRILLE FRONT BLADE PARALLEL TO LONG SIDE.	PLAYGROUND	16X6	18X8	SUP-FACE	1

NOTES:  
 \* MECHANICAL CONTRACTOR SHALL PURCHASE THE AIR DEVICES DIRECTLY FROM TOM BARROW COMPANY. CONTACT MR. SCOTT GEORGE AT 404-384-0100 FOR PRICING AND AVAILABILITY. AIR DEVICES NOT PURCHASED THRU TOM BARROW COMPANY WILL NOT BE ACCEPTED.

REMARKS:  
 1. STANDARD OFF WHITE FINISH.  
 2. PROVIDE MODEL AS-65 NECK DAMPER.  
 3. SEE DRAWING 1M1 FOR THROU.  
 4. PROVIDE MODEL AS-75 NECK DAMPER ON GRILLES IN RESTROOMS.  
 5. FIELD FABRICATE 8\"/>

3445 SW COLLEGE RD  
OCALA, FL 34474

SHEET TITLE  
HVAC DETAILS  
& SCHEDULES

VERSION: S08N-104  
V5-01  
ISSUE DATE: 10-2010

Job No. : 10.0421  
Store : 2367  
Date : 12/2010  
Drawn By :  
Checked By :  
Sheet

**INTERPLAN** 311

ARCHITECTURE  
ENGINEERING  
INTERIOR DESIGN  
PROJECT MANAGEMENT

AA 003240  
CA 8660  
604 COURTLAND STREET SUITE 100  
ORLANDO, FLORIDA 32812  
PH 407.645.5008  
FX 407.629.9124

FRANK TRAHAN, P.E.  
FLORIDA LIC. #FE-19197

5200 Buffington Rd.  
Atlanta Georgia,  
30349-2998

Revisions:  
Work Date By  
OWNER REVISION  
HM/C

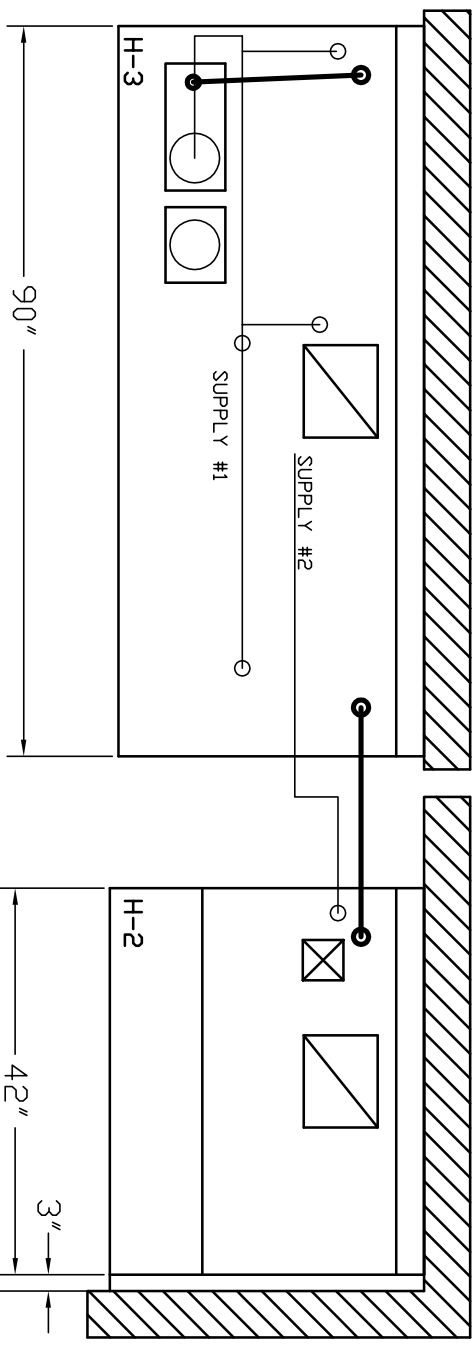
**M-31**



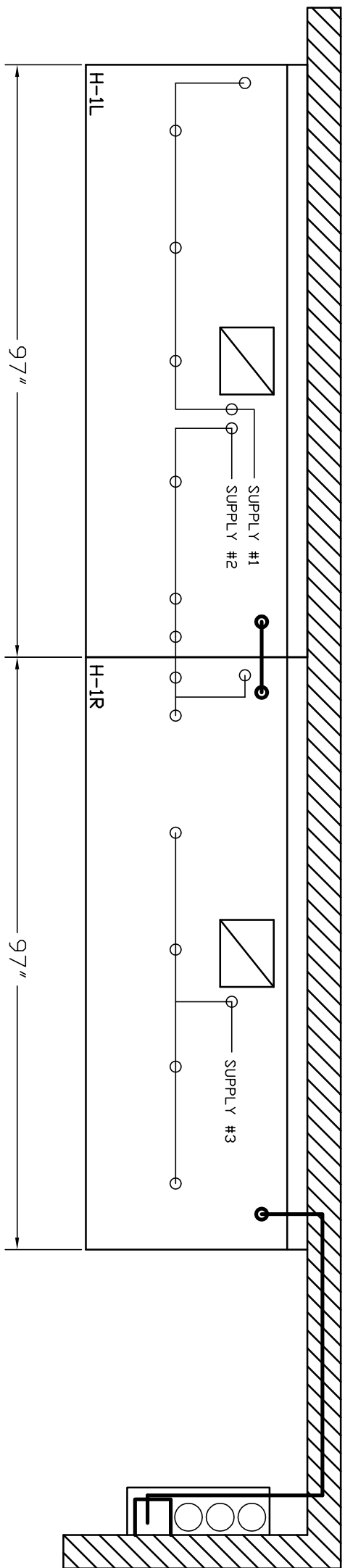




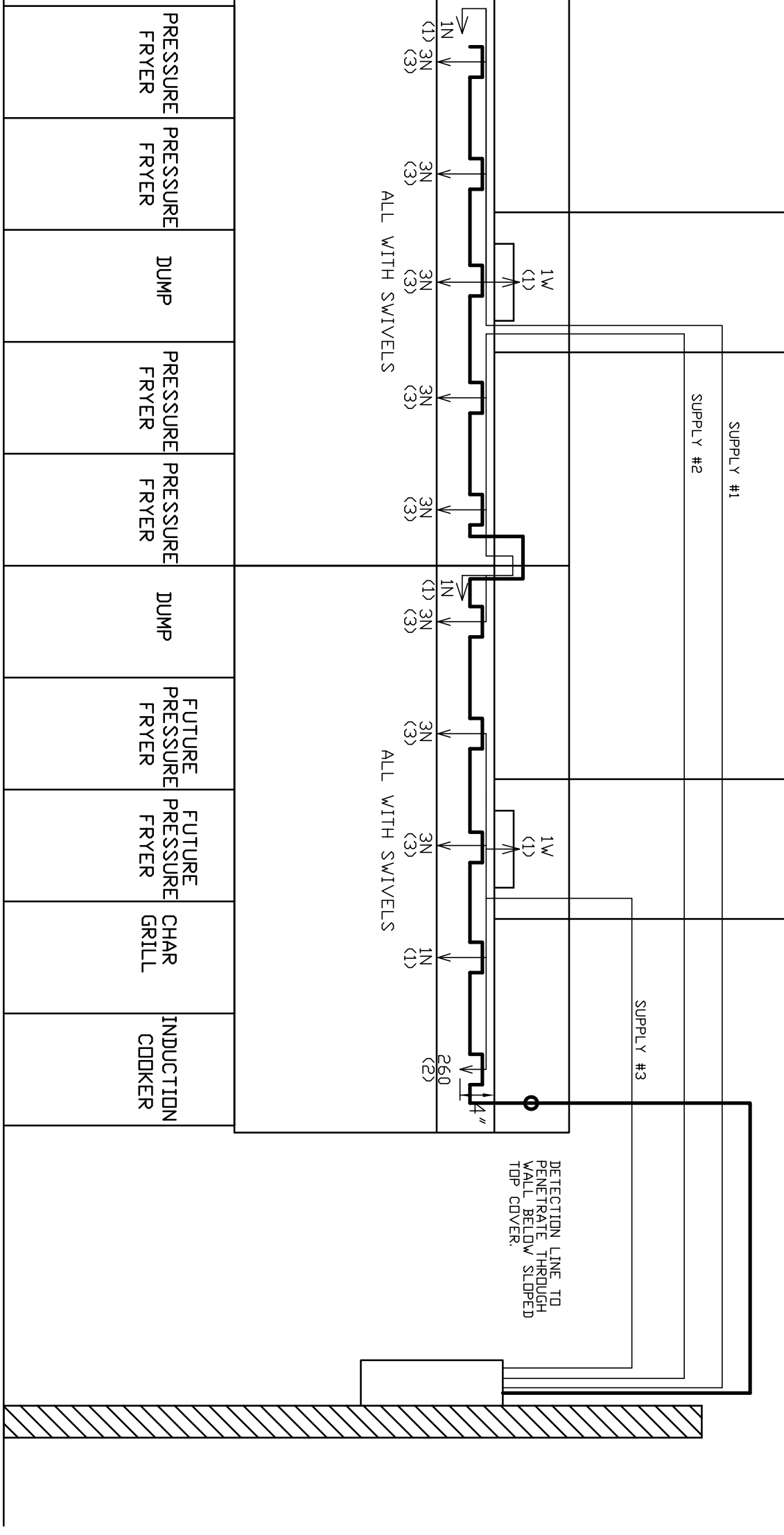
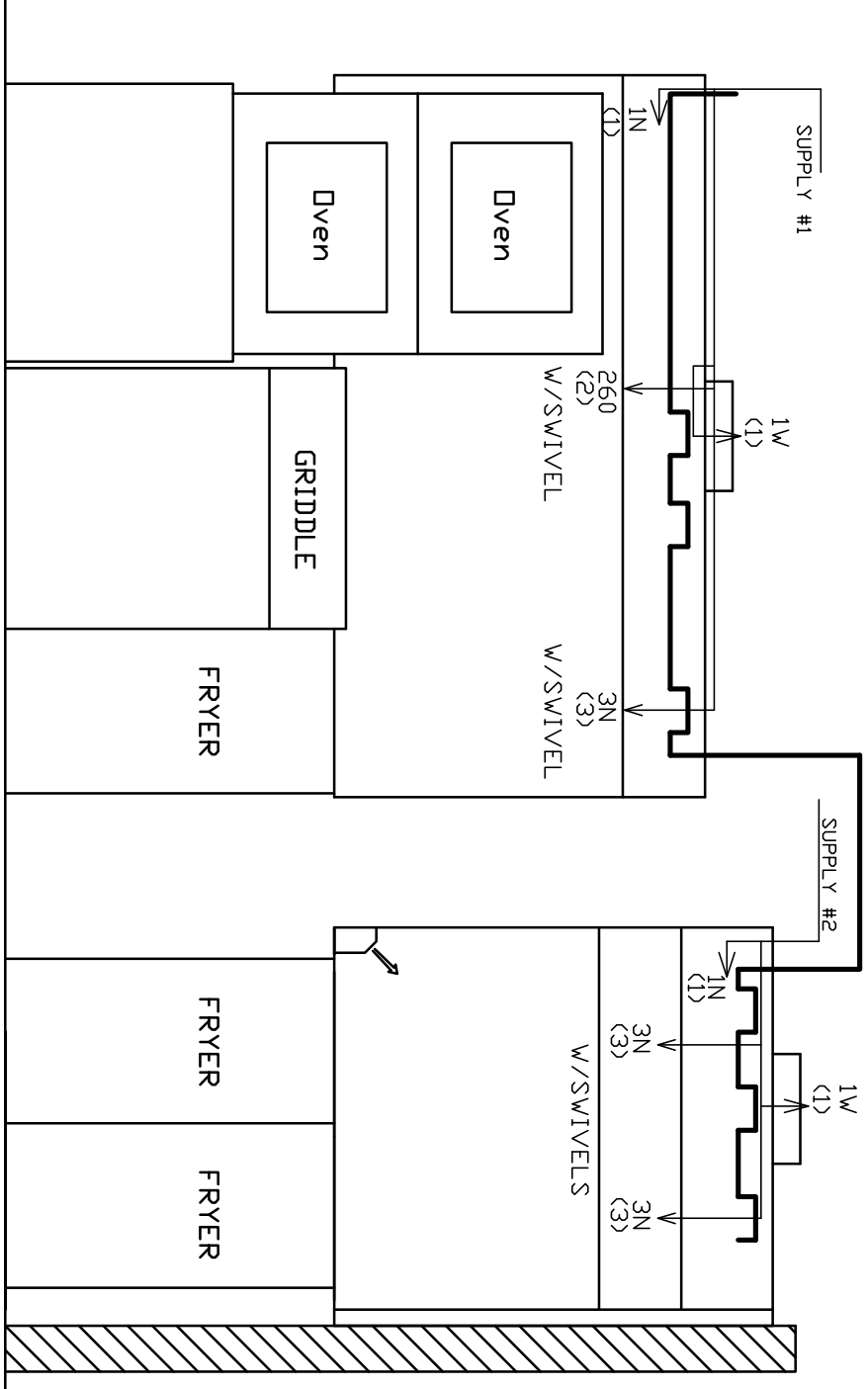




- ANSUL R-102 FIRE SYSTEM**  
 A) 6 GALLON SYSTEM 2 TANKS  
 (MOUNTED ON HOOD #H-3)  
 B) 3/8" BLACK IRON PIPING  
 W/ 3/8" S.S. APPLIANCE DROPS
- (1) REGULATED RELEASE WITH (SINGLE TANK)  
 (2) EXTRA MICRO SWITCH ASSEMBLIES (MOUNTED IN REG. REL.)  
 (3) 3 GALLON TANKS



- ANSUL R-102 FIRE SYSTEM**  
 A) 9 GALLON SYSTEM (3 TANKS)  
 (REMOTE MOUNTED ON WALL IN F.C.)  
 (FOR HOODS H-1L & H-1R)  
 B) 3/8" BLACK IRON PIPING  
 W/ 3/8" S.S. APPLIANCE DROPS
- (1) DEM REGULATED RELEASE  
 (2) EXTRA MICRO SWITCH ASSEMBLIES (MOUNTED IN REG. REL.)  
 (3) 3 GALLON TANKS



ANSUL R-102 FIRE SYSTEM LAYOUT

**FUSIBLE LINK RATINGS**

ITEM	TEMP
OPEN FRYERS	450°
2 BURNER / FLAT TOP	450°
PRESSURE FRYERS	450°
GRILL	450°
EXHAUST COLLARS	450°

ANSUL R-102 FIRE SYSTEM NOTES  
 THREE TANK SYSTEM REMOTE MOUNTED FOR (H-1)  
 MAXIMUM FLOW POINTS = 33

ANSUL R-102 FIRE SYSTEM NOTES  
 TWO TANK SYSTEM MOUNTED ON TOP OF (H-3)  
 MAXIMUM FLOW POINTS = 22

ITEM #	QTY	DESCRIPTION	FLOW PTS (TOTAL)
1W	4	DUCT NOZZLES	4
IN	4	PLENUM NOZZLES	4
IN	1	APPLIANCE NOZZLES	1
3N	11	APPLIANCE NOZZLES	33
260	2	APPLIANCE NOZZLES	4
<b>TOTAL FLOW POINTS =</b>			<b>46</b>

ITEM #	QTY	DESCRIPTION
#200	14	SERIES DETECTORS W/ FUSIBLE LINKS
#201	2	TERMINAL DETECTOR W/ FUSIBLE LINKS
#202	1	3 GALLON REGULATED RELEASE W/ DOUBLE POLE MICRO SWITCH
#203	1	DEM REGULATED RELEASE W/ DBL POLE MICRO SWITCH
#204	3	EXTRA 3 GALLON TANKS
#205	1	SINGLE TANK ENCLOSURE W/ TANK
#206	2	REMOTE PULL STATION

- ANSUL R-102 FIRE SYSTEM**  
 UL LISTED PER STD LATEST STD 300
- FINAL INSTALLATION IS TO BE MADE IN ACCORDANCE WITH ALL APPLICABLE CODES
  - ALL ELECTRICAL COMPONENTS FOR EQUIPMENT SHUT DOWN TO BE PROVIDED BY THE ELECTRICIAN. MICRO-SWITCH INSTALLED IN REGULATED RELEASE BY ANSUL INSTALLER
  - REMOTE PULL STATION LOCATED PER MECHANICAL DRAWINGS

PROJECT: CFA S08 CENTERLINE  
 LOCATION: SLIDELL, LA (SN#2787)  
 DRAWN BY: DATE: 10/7/10  
 SCALE: NTS  
 Halton Dwg: U10-391-2 (PROTOTYPICAL)

MAIL APPROVED DRAWINGS TO APPROPRIATE FACTORY BELOW: WEBSITE: WWW.HALTONCOMPANY.COM

REV.	DESCRIPTION	BY	DATE
1			
2			
3			
4			
5			
6			
7			

THIS DRAWING MUST BE CHECKED, SIGNED AND RETURNED TO THE APPROPRIATE FACTORY. PLEASE VERIFYING THE FOLLOWING:

- ALL DIMENSIONAL INFORMATION, MOUNTING POSITIONS AND CLEARANCES.
- THE LOCATION AND TYPE OF COOKING EQUIPMENT.

**NOTE TO APPROVER**  
 ANY CHANGES IN COOKING EQUIPMENT SUCH AS INCREASED ENERGY INPUTS OR EQUIPMENT POSITION MAY AFFECT EXHAUST AIRFLOW. HALTON MUST BE NOTIFIED IF ANY OF THESE CHANGES OCCUR, A RECALCULATION EXHAUST AIRFLOW MAY BE REQUIRED.

REVISE AND RESUBMIT  
 APPROVED FOR FABRICATION  
 WITH NO CHANGES  WITH CHANGES AS NOTED

APPROVED BY: \_\_\_\_\_ DATE: \_\_\_\_\_