

Report By:

National TAB
1329 E. KEMPER ROAD
SUITE 4210
CINCINNATI, OH 45246

NATIONAL

TAB

Comfort. Under control.

Report: TAB REPORT
Function: Test, Adjust, & Balance
Date: 05/03/2023

PROJECT

04-10-23 FREDDY'S - BARDSTOWN, K

1125 Morton Ave

BARDSTOWN, KY 40004

Client

X PROPERTIES, LLC

National TAB

Project: 04-10-23 FREDDY'S - BARDSTOWN, K

Table Of Contents

Section	Page #
Summary	3
Remarks	4
Balance Schedule	9
Site Pictures	10
Checklist Data	15
AHU/RTU	17
FAN - Exhaust	21
Kitchen Hood Type I	26
Kitchen Hood Type II	29
GRD Layout	30

Project Summary

The summary below provides a quick understanding of our scope of work and general testing procedures. Enclosed in the report is further detail about your building performance including recommendations, asset data, and pictures. Our focus is to work with the trades to remedy any issues or deficiencies during the actual field balancing and not after the balancing has occurred to achieve a positive environment and outcome. The level of success is determined by the availability of the trades, possible parts needed, or time constraints.

DOAS w/ Diffusers

Each of the DOAS were measured at their terminal devices or via traverse to establish a total flow for that unit. Each DOAS was adjusted to within tolerance of the engineer's design flow. Each outlet was then adjusted to within tolerance of the design flow. Outside air was measured by reading the intake air opening with a velocity grid and multiplying by the free area. The outside air damper was adjusted until the airflow was within the design requirements. Any equipment that fell outside of that tolerance is noted throughout the report.

Kitchen Exhaust Hood & Associated Fans

Each kitchen exhaust fan was measured at the hood filter bay utilizing a velocity matrix and a manufacturer's correction factor. Each filter velocity is multiplied by the manufacturer's corrected area. The sum of these readings equals the total flow of the exhaust fans. The total flow of the exhaust was then adjusted to within tolerance of the design flow. . Any EF's that fell outside of this tolerance is noted throughout the report.

General Exhaust Fans w/ Grilles

The general exhaust fans were measured by reading each air device with a flow hood. The total airflow for each fan is equivalent to the sum of these readings. Fan speed was then adjusted so that the airflow was within tolerance of design. Each terminal device was balanced to within tolerance of the design volume using the installed volume dampers. Any equipment that fell outside of this tolerance is noted throughout the report.

Final Building Tests

After completing the test and balance the final building pressure was measured. It was confirmed that the building pressure fell within acceptable tolerances of $-0.02''$ wc to $+0.02''$ wc and that the pressure measurement coincides with the actual and design net airflow. Any deviations from these standards are noted throughout the report.

The hood capture was tested at the perimeter of the hood and the cook top level with the equipment heat on to ensure satisfactory hood capture and containment.



Comfort. Under control.

04-10-23 FREDDY'S - BARDSTOWN, K

Project Issue Information

Issue Name : DIFFUSER - DOAS-1

Description : Diffuser number 1 served by the Doas has the flex duct routed through a truss where it is pinched. Max flow is 266 cfm with doas maximized and all other diffusers balanced

Created By : National TAB

Assigned To : National TAB - Tyler Youells

Status : Open

Originated Date : 04/14/2023 - Tyler Youells - National TAB

Project Issue File Details



Diffuseronepinched.jp...



Comfort. Under control.

04-10-23 FREDDY'S - BARDSTOWN, K

Project Issue Information

Issue Name : EF-1 OVERSIZED

Description : EF-1 women's restroom is oversized, installed was a 150cfm fan but is spec'd to be a 75Cfm fan. Recommend reviewing and rectifying. Fans do not run constantly only when restroom is occupied and lights on. So it won't effect building pressure 100% of the time.

Created By : National TAB

Assigned To : National TAB - Tyler Youells

Status : Open

Originated Date : 04/14/2023 - Tyler Youells - National TAB

Project Issue File Details





Comfort. Under control.

04-10-23 FREDDY'S - BARDSTOWN, K

Project Issue Information

Issue Name : KEF-3 no power

Description : Unable to perform TAB on KEF-3. There is no power. Electrician not on-site to diagnose, panel electric plans differ than actual install so breaker location is unknown.

Created By : National TAB

Assigned To : National TAB - Tyler Youells

Status : Open

Originated Date : 04/14/2023 - Tyler Youells - National TAB

Project Issue File Details



Kef3.jpeg



Comfort. Under control.

04-10-23 FREDDY'S - BARDSTOWN, K

Project Issue Information

Issue Name : RTU-1 FINAL FILTERS

Description : RTU-1 has construction filters installed, recommend changing to Final MERV filters prior to store turnover.

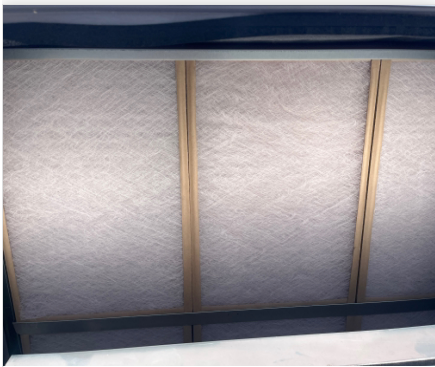
Created By : National TAB

Assigned To : National TAB - Tyler Youells

Status : Open

Originated Date : 04/13/2023 - Tyler Youells - National TAB

Project Issue File Details



Rtu1filters.jpeg



Comfort. Under control.

04-10-23 FREDDY'S - BARDSTOWN, K

Project Issue Information

Issue Name : UNABLE TO PERFORM ACCURATE SMOKE TEST

Description : Unable to perform accurate smoke test due to following items. 1. Back door is open continuously due to it being painted. 2. Ceiling tiles are not all in around the hood area. 3. Cooking equipment is scattered and unable to turn on. Recommend returning to balance KEF-3 which could not get power. And will evaluate hoods then.

Created By : National TAB

Assigned To : National TAB - Tyler Youells

Status : Open

Originated Date : 04/14/2023 - Tyler Youells - National TAB

AIR BALANCE SCHEDULE

UNIT	AREA SERVED	HVAC SUPPLY		HVAC RETURN		HVAC OUTDOOR		OA %		HOOD MAKE-UP		HOOD EXHAUST		GENERAL EXH.	
		DESIGN	ACTUAL	DESIGN	ACTUAL	DESIGN	ACTUAL	DESIGN	ACTUAL	DESIGN	ACTUAL	DESIGN	ACTUAL	DESIGN	ACTUAL
RTU-1	DINING	5000	4625	4100	3676	900	949	18.0%	20.5%						
DOAS-1	KITCHEN	3300	3242	0	0	3300	3242	100.0%	100.0%						
KEF-1	HOOD 1											2584	2680		
KEF-2	HOOD 2											775	807		
KEF-3	HOOD 3											525	0		
EF-1	WOMENS RR													150	161
EF-2	MENS RR													75	176
TOTALS		8300	7867	4100	3676	4200	4191			0	0	3884	3487	225	337

NET BUILDING AIRFLOW CALCULATION

TOTALS	DESIGN	ACTUAL
TOTAL OA	4200	4191
TOTAL EXHAUST	4109	3824
NET AIRFLOW	91	367

FINAL CHECKS

- ACTUAL NET AIRFLOW COINCIDES WITH DESIGN: ✔

- MEASURED PRESSURES COINCIDES WITH ACTUAL NET AIRFLOW: ✔

- PRESSURE FALLS WITHIN IMC TOLERANCE OF +/-0.02" W.C.: ✔

NOTES:



Comfort. Under control.

04-10-23 FREDDY'S - BARDSTOWN, K

CheckList Information

Name :	TECH - SITE PICTURES	Status :	NotSubmitted
Assigned Organization :	National TAB	Asset :	
Requesting Organization :	National TAB		

CheckList Item Details

STORE FRONT

YES



Storefront.jpeg

RTU-1

YES



RTU1.jpeg

DOAS-1

YES



Doas1.jpeg

KEF-1

YES



Kef1.jpeg

KEF-2

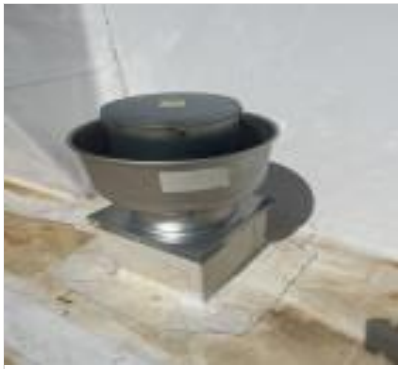
YES



KEF2.jpeg

KEF-3

YES



KEF3.jpeg

EF-1

YES



Ef1.jpeg

EF-2

Ef2



Ef2.jpeg

HOOD-1A

YES



Hd1A.jpeg

HOOD-1B

Yes



Hd1B.jpeg

HOOD-2

YES



Hood2.jpeg

HOOD-3

YES



Hood3.jpeg

Notes/Comments :



Comfort. Under control.

04-10-23 FREDDY'S - BARDSTOWN, K

CheckList Information

Name : TECH - STEP 1: INITIAL WALKTHROUGH **Status :** NotSubmitted
Assigned Organization : National TAB **Asset :**
Requesting Organization : National TAB

CheckList Item Details

INITIAL SITE WALKTHROUGH

All diffusers and grilles are installed and match design?	YES
All hood filters installed and accounted for?	YES
Hoods are wired and have power?	YES
Hood is free of alarms?	YES
Thermostats have power?	YES
Have trades/general contractor been notified about any issues and are they created on FaciliBuild?	YES

Notes/Comments :



Comfort. Under control.

04-10-23 FREDDY'S - BARDSTOWN, K

CheckList Information

Name : TECH - STEP 2: UNIT DATA AND EVAL **Status :** NotSubmitted
Assigned Organization : National TAB **Asset :**
Requesting Organization : National TAB

CheckList Item Details

UNIT DATA AND EVALUATION WHILE GATHERING UNIT DATA CHECK THE FOLLOWING:

RTU's/AHU's

Economizers are assembled and functional?	YES
DCV Max damper opening position is set to minimum?	YES
Free cooling enthalpy set point set for lowest setting (Typically "D")	SET TO 50DEG DB
Motors are all operating below the FLA rating?	YES
Are belts tight?	YES
If direct drive unit is the speed controller working.	YES
Is gas piping installed and valves turned on?	YES
Unit free of noticeable noise and vibration	YES

EF's

Rotation is correct?	KEF-1 ROTATION INCORRECT, NTAB FIXED
Belts are tight?	NA
Grease cup installed on hood fan?	YES
Hinge kit installed installed on hood fan?	YES
Lean fan back. Is grease duct installation adequate and is duct ran all the way to the base of the fan?	YES

Flex conduit is long enough so that fan can be completely tilted back?	YES
There is no major leakage around base of fan?	NO MAJOR LEAKAGE TO NOTE
Is the motor operating below the motor FLA rating?	YES
For restroom fan(s) is the back draft damper installed and can it fully open?	N/A
Unit free of noticeable noise and vibration?	YES

MUA

Rotation is correct?	YES
Gas piping is installed and valves are in on position?	N/A
Heater tested and is functional?	N/A
Internal motorized damper is fully opening?	YES
Motor is operating below the FLA rating?	YES
Unit free of noticeable noise and vibration?	YES

HOODS

Kitchen equipment installed in proper places?	NO, KITCHEN EQUIPMENT SCATTERED AROUND
Can kitchen equipment be turned on for final smoke test?	NO, STARTUPS NOT YET COMPLETED
Griddle is completely centered underneath hood?	NO

DOCUMENTATION

Have trades/general contractor been notified about any issues and are they created on FaciliBuild?	YES
--	-----

PICTURES TAKEN OF:

All Issues	YES
Each Piece of equipment	YES
Each Hood	YES
Front of Store	YES

<p>Notes/Comments :</p> <hr/> <hr/> <hr/>
--



Comfort. Under control.

04-10-23 FREDDY'S - BARDSTOWN, K

CheckList Information

Name : TECH - STEP 3: TEST, ADJUST AND BALANCE **Status :** NotSubmitted

Assigned Organization : National TAB **Asset :**

Requesting Organization : National TAB

CheckList Item Details

TEST, ADJUST, AND BALANCE ALL EQUIPMENT:

DURING TESTING MAKE NOTE OF THE FOLLOWING:

Is space free of drafting?	YES
Is space comfortable in all areas?	YES
Is the space free of ventilation noise?	YES
If deviations from design were necessary to resolve 1-3 what were they? Otherwise put "NA".	NA

Notes/Comments :



Comfort. Under control.

04-10-23 FREDDY'S - BARDSTOWN, K

CheckList Information

Name : TECH - STEP 4: FINAL TESTS **Status :** NotSubmitted
Assigned Organization : National TAB **Asset :**
Requesting Organization : National TAB

CheckList Item Details

FINAL TESTS

HOOD CAPTURE TEST

List equipment turned on for testing	NONE
List smoke candle type used	45 SEC SMOKE
Smoke test capture - Perimeter of hood	UNABLE TO PERFORM SMOKE TEST DUE TO NUMBER OF CONCERNS. 1, BACK DOOR CANNOT BE SHUT DUE TO PAINTERS, 2 NOT ALL CEILING TILES INSTALLED, 3 COOKING EQUIPMENT CANNOT BE STARTED UP AND IS NOT PROPERLY LOCATED. RECOMMEND CHECKING SMOKE CAPTURE ON RETURN TO BALANCE KEF-3 THAT DID NOT HAVE POWER.
Smoke test capture - Top of cooking surface	NA

WITNESS

Date test was completed	04/14/2023
TAB tech name / Firm	NA
Site super name / Firm	NA
Owner representative name / Firm (if Applicable)	NA
Building pressure at front & back doors (All Systems On)	NO

ADDITIONAL

Do actual net building airflow, design net building airflow, and pressure coincide? If not why? (All three should either be positive or negative)	UNABLE TO SHUT BACK DOOR DUE TO PAINTERS
---	--

Thermostats are programmed? YES

Thermostats Schedules: Program all thermostats to following settings:

All three thermostats have correct time/date? (if not set correctly) YES

Occupied Time: 8am-11:55pm YES

Occupied Fan ON YES

Occupied cooling 74 YES

Occupied heating 68 YES

Unoccupied Time 11:55pm-8am YES

Unoccupied Fan Auto YES

Unoccupied cooling 79 YES

Unoccupied heating 63 YES

Set a Partial Screen Lock for Thermostats (i.e., make sure temperature is adjustable but not schedule) YES

Password is set to 999 for Partial Screen Lock? UNABLE TO CHANGE PASSWORD THATS AUTOMATICALLY GENERATED. PASSWORD IS: 3469

RTU Economizers

Note: These instructions are for Lennox units. There are similar settings for other OEMs. Call office for assistance if needed.

Enthalpy is set to "D" for all three units SET TO 50DEG DB

"DCV Set" dials turned all the way to the left (counter clockwise) NA

"DCV Max" dials turned all the way to the left (counter clockwise) NA

Notes/Comments :

National TAB

Project: 04-10-23 FREDDY'S - BARDSTOWN, K

System/Unit: AHU/RTU



Comfort. Under control.

Asset: DOAS1

AREA:KITCHEN

Unit Data		
	Design	Actual
MFG	CAPTIVEAIRE	CAPTIVEAIRE
Serial Num	-	5249391
Model Num	CASRTU-E.902-18-20T-DOAS	CASRTU-E.902-18-20T-DOAS
Type	DOAS	DOAS
Configuration	VERTICAL	ERTICAL
Num OA Filters 1	-	4
OA Filter Size 1	-	25X16
Num Final Filter 1	-	8
Final Filter Size 1	-	20X25X2

Motor Data		
	Design	Actual
Motor MFG	-	TECO
Frame	-	182T
Horsepower	3	3
Motor Rpm	-	1755
Phase	3	3
Rated Voltage	208	208
Rated Amperage	-	9.5

Drive Data		
	Design	Actual

Test Data		
	Design	Actual
SF CFM	3300	3242
SF RPM	-	1603
RA CFM	0	0
OA CFM	3300	3242
RL Voltage	-	212V
RL Amperage	-	9.3A
SF Rotation	-	CCW
RA Damper Position	-	0%
Min OA Damper Position	-	100%
Min OA Damper Type	-	DOAS
OA Enthalpy Setpt	-	NA

Performance Data		
	Design	Actual
Total ESP	0.5"	NA

General		
	Design	Actual
Fan Rotation Correct	-	YES
Unit Filters Clean	-	YES
Condensate Drain Installed	-	YES

Completed By: Tyler Youells

Notes:

National TAB

Project:04-10-23 FREDDY'S - BARDSTOWN, K

AHU/RTU



Comfort. Under control.

Diffuser Supply (GRD)

DOAS1/KITCHEN

Asset									
Asset Name	Location	Type	Size	DESIGN CFM	AK	CFM(1)	CFM(2)	FINAL CFM	% to design
SGRD1	KITCHEN	SD3	10"	350	1	222	258	266	76.0
SGRD2	KITCHEN	SD3	10"	350	1	326	367	351	100.3
SGRD3	KITCHEN	SD3	10"	350	1	293	326	345	98.6
SGRD4	KITCHEN	SD2	10"	345	1	372	380	332	96.2
SGRD5	KITCHEN	SD2	10"	350	1	332	385	331	94.6
SGRD6	KITCHEN	SD2	10"	350	1	367	409	355	101.4
SGRD7	KITCHEN	SD3	10"	350	1	316	358	371	106.0
SGRD8	KITCHEN	SD3	10"	350	1	307	345	370	105.7
SGRD9	KITCHEN	SD3	10"	350	1	322	379	362	103.4
SGRD10	OFFICE	SD4	8"	154	1	117	140	159	103.2

Completed By: Brianna Biggs on

National TAB

Project: 04-10-23 FREDDY'S - BARDSTOWN, K

System/Unit: AHU/RTU



Comfort. Under control.

Asset: RTU1

AREA:DINING

Unit Data		
	Design	Actual
MFG	CARRIER	CARRIER
Serial Num	-	3422P09883
Model Num	48HCFD14K2	48HCFD14K2M5A6U3J0
Type	RTU	RTU
Configuration	VERTICAL	VERTICAL
Num OA Filters 1	-	2
OA Filter Size 1	-	24X26
Num Final Filter 1	-	6
Final Filter Size 1	-	24X18X2

Motor Data		
	Design	Actual
Motor MFG	-	MARATHON
Frame	-	56HZ
Horsepower	3	3.7
Motor Rpm	-	1750
Phase	3	3
Rated Voltage	208	208
Rated Amperage	-	10.5

Drive Data		
	Design	Actual
Motor Sheave Size	-	1VP50
Motor Bore Size	-	0.825"
Motor Sheave SetPt	-	1 TURN OUT
Fan Sheave Size	-	AK104
Fan Sheave Bore	-	1.1875"
Belt CL Distance	-	20.5"
Num of Belts	-	1
Belt Size	-	A61
Belt Alignment	-	GOOD

Test Data		
	Design	Actual
SF CFM	5000	4625
SF RPM	-	743
RA CFM	4100	3676
OA CFM	900	949
RL Voltage	-	211.5/213.1/213.2
RL Amperage	-	9.34/9.56/8.01
SF Rotation	-	CCW
RA Damper Position	-	MECHANICAL LINKAGE
Min OA Damper Position	-	4.25V
Min OA Damper Type	-	ECONOMIZER
OA Enthalpy Setpt	-	50 DEG DB

Performance Data		
	Design	Actual
MA Plenum SP	-	-0.76"
Fan Suction SP	-	-0.95"
Fan Discharge SP	-	0.59"
Total ESP	1.0"	1.35"
Fan Total SP	-	1.54"

General		
	Design	Actual
Fan Rotation Correct	-	YES
Unit Filters Clean	-	YES/CONSTRUCTION FILTERS
Condensate Drain Installed	-	YES

Completed By: Tyler Youells

Notes:

National TAB

Project:04-10-23 FREDDY'S - BARDSTOWN, K

AHU/RTU



Comfort. Under control.

Diffuser Supply (GRD)

RTU1/DINING

Asset									
Asset Name	Location	Type	Size	DESIGN CFM	AK	CFM(1)	CFM(2)	FINAL CFM	% to design
SGRD1	VESTIBUL E	SD6	8"	175	1	91	124	167	95.4
SGRD2	DINING	SD1	12"	450	1	293	351	405	90.0
SGRD3	DINING	SD1	12"	450	1	391	491	416	92.4
SGRD4	DINING	SD1	12"	450	1	442	589	425	94.4
SGRD5	ORDERIN G	SD1	12"	450	1	375	501	409	90.9
SGRD6	ORDERIN G	SD1	12"	450	1	410	482	410	91.1
SGRD7	DINING	SD1	12"	450	1	322	400	408	90.7
SGRD8	DINING	SD1	12"	450	1	290	346	426	94.7
SGRD9	DINING	SD1	12"	450	1	316	390	410	91.1
SGRD10	DINING	SD1	12"	450	1	323	450	430	95.6
SGRD11	DINING	SD1	12"	450	1	355	449	409	90.9
SGRD12	RR VEST	SD5	6"	175	1	39	55	165	94.3
SGRD13	WOMENS RESTROO M	SD5	6"	100	1	51	55	94	94.0
SGRD14	MENS RESTROO M	SD5	6"	50	1	45	54	51	102.0

Completed By: Brianna Biggs on

National TAB

Project: 04-10-23 FREDDY'S - BARDSTOWN, K

System/Unit: FAN - Exhaust



Comfort. Under control.

Asset: EF1

AREA:WOMENS RESTROOM

Unit Data		
	Design	Actual
MFG	COOK	GREENHECK
Model Num	GC168	SP-B150-QD
Serial Num	-	150378386-0050
Type	CEILING	CEILING
Configuration	VERTICAL	HORIZONTAL

Motor Data		
	Design	Actual
Motor MFG	-	GREENHECK
Frame	-	NL
Horsepower	50.4W	NL
Motor Rpm	1	1050
Phase	1	115
Voltage (rated)	120	120
Amperage (rated)	-	1.6
Service Factor	-	1

Test Data		
	Design	Actual
CFM	75	176
Fan RPM	1099	1050
Fan Rotation	-	CCW
Motor RPM	-	1050
System SetPt	-	NA FULL SPEED
RL Voltage	-	121.1
RL Amperage	-	1.54
Total ESP	0.25"	NA

Completed By: Tyler Youells

Notes:

National TAB

Project: 04-10-23 FREDDY'S - BARDSTOWN, K

System/Unit: FAN - Exhaust



Comfort. Under control.

Asset: EF2

AREA:MENS RESTROOM

Unit Data		
	Design	Actual
MFG	COOK	GREENHECK
Model Num	GC-146	SP-150-QD
Serial Num	-	135195927-0057
Type	CEILING	CEILING
Configuration	VERTICAL	HORIZONTAL

Motor Data		
	Design	Actual
Motor MFG	-	GREENHECK
Frame	-	NL
Horsepower	30.3W	NL
Motor Rpm	-	1050
Phase	1	1
Voltage (rated)	120	120
Amperage (rated)	-	1.6
Service Factor	-	1

Test Data		
	Design	Actual
CFM	150	161
Fan RPM	900	1050
Fan Rotation	-	CCW
Motor RPM	-	1050
System SetPt	-	NA FULL SPEED
RL Voltage	-	120.4
RL Amperage	-	1.51
Total ESP	0.25"	NA

Completed By: Tyler Youells

Notes:

National TAB

Project: 04-10-23 FREDDY'S - BARDSTOWN, K

System/Unit: FAN - Exhaust



Comfort. Under control.

Asset: KEF1

AREA:HOOD 1

Unit Data		
	Design	Actual
MFG	CAPTIVEAIRE	CAPTIVEAIRE
Model Num	CASRE18DD	CASRE18DD
Serial Num	-	5249391
Type	UTILITY	UTILITY
Configuration	VERTICAL	VERTICAL

Motor Data		
	Design	Actual
Motor MFG	-	WEG
Frame	-	56HZ
Horsepower	2	2
Motor Rpm	-	1740
Phase	3	3
Voltage (rated)	208	230
Amperage (rated)	-	5.38
Service Factor	-	1.15

Test Data		
	Design	Actual
CFM	2584	2680
Fan RPM	1287	1317
Fan Rotation	-	CCW
Motor RPM	-	1317
System SetPt	-	45.4HZ
RL Voltage	-	212.2/211.9/211.7
RL Amperage	-	5.3
Total ESP	1.4"	NA
Fan Inlet SP	-	NA
Fan Discharge SP	-	ATM

Completed By: Tyler Youells

Notes:

National TAB

Project: 04-10-23 FREDDY'S - BARDSTOWN, K

System/Unit: FAN - Exhaust



Comfort. Under control.

Asset: KEF2

AREA:HOOD 2

Unit Data		
	Design	Actual
MFG	CAPTIVEAIRE	CAPTIVEAIRE
Model Num	DU50HFA	DU50HFA
Serial Num	-	5249391
Type	UPBLAST	UPBLAST
Configuration	VERTICAL	VERTICAL

Motor Data		
	Design	Actual
Motor MFG	-	TELCO GREEN
Frame	-	NL
Horsepower	0.5	0.5
Motor Rpm	-	1800
Phase	1	1
Voltage (rated)	-	208
Amperage (rated)	-	3.8
Service Factor	-	1

Test Data		
	Design	Actual
CFM	775	807
Fan RPM	1493	1026
Fan Rotation	-	CCW
Motor RPM	-	1026
System SetPt	-	57%
RL Voltage	-	213.9
RL Amperage	-	1.51
Total ESP	1.2"	0.81"
Fan Inlet SP	-	-0.81"
Fan Discharge SP	-	ATM

Completed By: Tyler Youells

Notes:

National TAB

Project: 04-10-23 FREDDY'S - BARDSTOWN, K

System/Unit: FAN - Exhaust



Comfort. Under control.

Asset: KEF3

AREA:HOOD 3

Unit Data		
	Design	Actual
MFG	CAPTIVEAIRE	CAPTIVEAIRE
Model Num	DU33HFA	DU33HFA
Serial Num	-	5249391
Type	UPBLAST	UPBLAST
Configuration	VERTICAL	VERTICAL

Test Data		
	Design	Actual
CFM	525	0
Fan RPM	1475	0
Fan Rotation	-	CCW
Total ESP	0.8"	0

Motor Data		
	Design	Actual
Motor MFG	-	TELCO GREEN
Frame	-	NL
Horsepower	0.333	0.33
Motor Rpm	-	1800
Phase	1	1
Voltage (rated)	115	115
Amperage (rated)	-	4.3
Service Factor	-	1

Completed By: Tyler Youells

Notes:

National TAB

Project: 04-10-23 FREDDY'S - BARDSTOWN, K

System/Unit: Kitchen Hood Type I



Comfort. Under control.

Asset: HD2

AREA:

Unit Data		
	Design	Actual
MFG	CAPTIVEAIRE	CAPTIVEAIRE
Model Num	5424 ND-2	5424 ND-2
Job / Serial Num	-	5249391
Type	TYPE I CANOPY	TYPE I CANOPY
Hood length	60	60
Hood Width	54	54

Test Data Exhaust		
	Design	Actual
Filter Type	CAPTRATE	CAPTRATE SOLO
Filter Size 1	16X16	16X16
Filter Qty 1	3	3
Filter AK factor size 1	1.62	1.62
Filter Total AK Area	4.86	4.86
Filter1 FPM	-	168
Filter2 FPM	-	167
Filter3 FPM	-	164
Filter Ave FPM(corr)	-	166
CFM	775	807

Cooking Equipment		
	Design	Actual
Item 1	-	DOUBLE BANK FRYER

Completed By: Tyler Youells

Notes:

National TAB

Project: 04-10-23 FREDDY'S - BARDSTOWN, K

System/Unit: Kitchen Hood Type I



Comfort. Under control.

Asset: HD-A1

AREA:

Unit Data		
	Design	Actual
MFG	CAPTIVEAIRE	CAPTIVEAIRE
Model Num	5424 ND-2	5424 ND-2
Job / Serial Num	-	5249391
Type	TYPE I CANOPY	TYPE I ISLAND
Hood length	70	70
Hood Width	54	54

Test Data Exhaust		
	Design	Actual
Filter Type	CAPTRATE	CAPTRATE SOLO
Filter Size 1	16X16	16X16
Filter Qty 1	5	5
Filter AK factor size 1	1.62	1.62
Filter Total AK Area	8.1	8.1
Filter1 FPM	-	171
Filter2 FPM	-	155
Filter3 FPM	-	157
Filter4 FPM	-	163
Filter5 FPM	-	169
Filter Ave FPM(corr)	-	163
CFM	1292	1368

Cooking Equipment		
	Design	Actual
Item 1	-	HEAT TRAY
Item 2	-	BUN TOASTER

Completed By: Tyler Youells

Notes:

National TAB

Project: 04-10-23 FREDDY'S - BARDSTOWN, K

System/Unit: Kitchen Hood Type I



Comfort. Under control.

Asset: HD-B1

AREA:

Unit Data		
	Design	Actual
MFG	CAPTIVEAIRE	CAPTIVEAIRE
Model Num	5424 ND-2	5424 ND-2
Job / Serial Num	-	5249391
Type	TYPE I CANOPY	TYPE I ISLAND
Hood length	70	70
Hood Width	54	54

Test Data Exhaust		
	Design	Actual
Filter Type	CAPTRATE	CAPTRATE
Filter Size 1	16X16	16X16
Filter Qty 1	5	5
Filter AK factor size 1	1.62	1.62
Filter Total AK Area	8.1	8.1
Filter1 FPM	-	158
Filter2 FPM	-	160
Filter3 FPM	-	168
Filter4 FPM	-	171
Filter5 FPM	-	154
Filter Ave FPM(corr)	-	162
CFM	1292	1312

Cooking Equipment		
	Design	Actual
Item 1	-	GRIDDLE

Completed By: Tyler Youells

Notes:

National TAB

Project: 04-10-23 FREDDY'S - BARDSTOWN, K

System/Unit: Kitchen Hood Type II



Comfort. Under control.

Asset: HD3

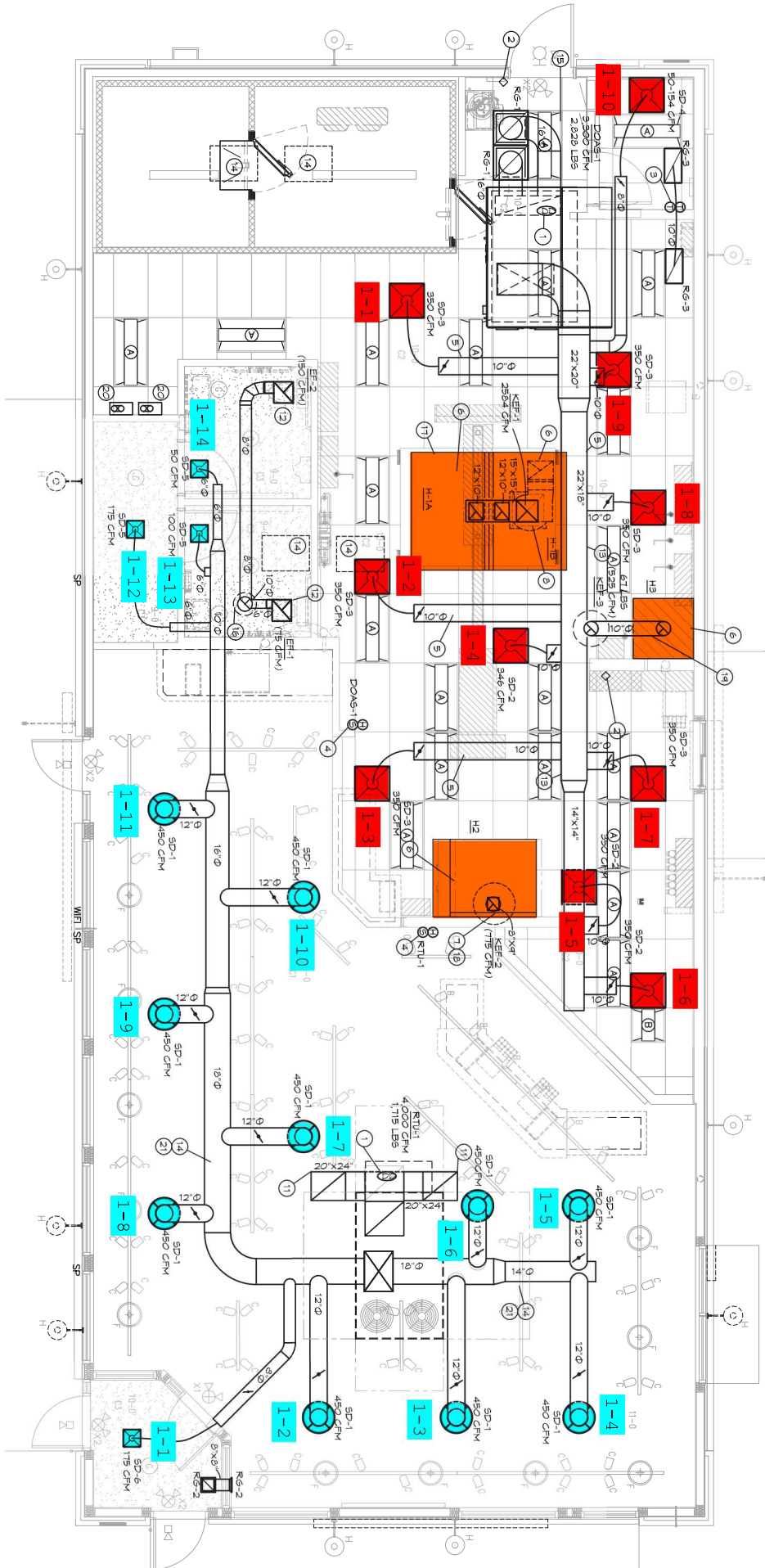
AREA:

Unit Data		
	Design	Actual
MFG	CAPTIVEAIRE	CAPTIVEAIRE
Model Num	4224 VHB-G	4224 VHB-G
Serial Num	-	5249391
Type	TYPE I CANOPY	TYPE II CANOPY
Hood length	42	42
Hood Width	42	42

Test Data		
	Design	Actual
Exhaust CFM	525	0

Completed By: Tyler Youells

Notes:



MECHANICAL FLOOR PLAN
SCALE: 1/4" = 1'-0"