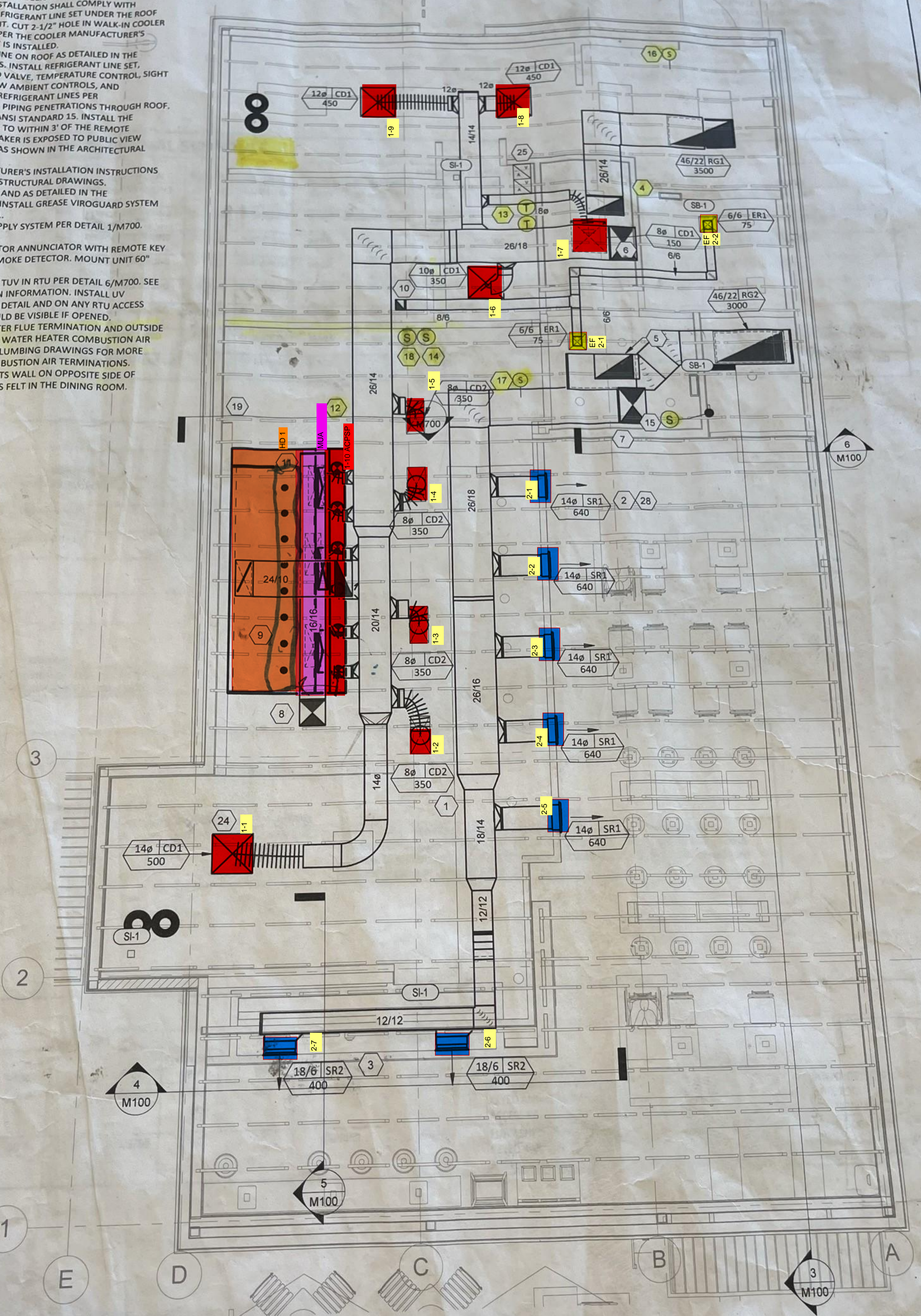
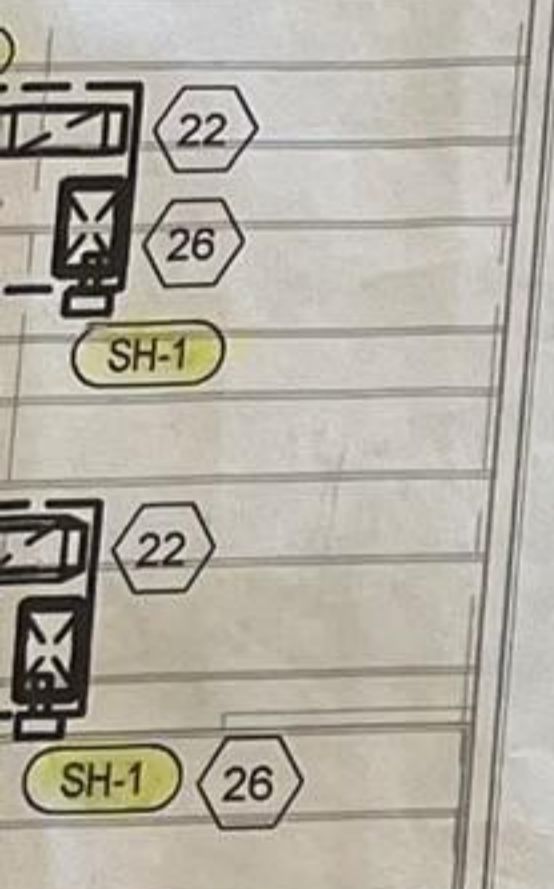


HVAC PLAN NOTES

19. INSTALL KITCHEN HOOD, HD-1. SUPPORT HOOD PER MANUFACTURER'S INSTALLATION INSTRUCTIONS AND AS DETAILED IN THE ARCHITECTURAL AND STRUCTURAL DRAWINGS. INSTALL HOOD ACCORDING TO THE REQUIREMENTS OF ITS LISTING. IN COMPLIANCE WITH NFPA 96, THE BUILDING CODE, AND AUTHORITIES HAVING JURISDICTION, HOOD SHALL HAVE AN INTEGRAL DUCT COLLAR TEMPERATURE SENSOR TO AUTOMATICALLY ENERGIZE THE EXHAUST AND MAKEUP AIR FANS IF COOKING TEMPERATURES ARE DETECTED. EXHAUST DUCT SYSTEM TO BE WELDED OR FACTORY-MANUFACTURED WATER AND AIR-TIGHT. INSTALL CLEANOUTS PER CODE AND AS SHOWN. INSTALL HOOD PER DETAILS 2 AND 4/M700. CHIPOTLE WILL PROVIDE AN INDEPENDENT TESTING AGENCY FOR TESTING THE INTEGRITY OF THE GREASE DUCT SYSTEM.
20. INSTALL REMOTE CONDENSING UNIT FOR WALK-IN COOLER ON ROOF AS DETAILED IN THE ARCHITECTURAL AND STRUCTURAL DRAWINGS. INSTALL REFRIGERANT LINE SET, THERMOSTATIC EXPANSION VALVE, SOLENOID VALVE, TEMPERATURE CONTROL, SIGHT GLASS, FILTER DRIER, PRESSURE CONTROL, LOW AMBIENT CONTROLS, AND WEATHERPROOF HOUSING. TRAP AND SLOPE REFRIGERANT LINES PER MANUFACTURER'S RECOMMENDATIONS. INSTALLATION SHALL COMPLY WITH ASHRAE/ANSI STANDARD 15. INSTALL THE REFRIGERANT LINE SET UNDER THE ROOF DECK TO WITHIN 3' OF THE CONDENSING UNIT. CUT 2-1/2" HOLE IN WALK-IN COOLER ROOF FOR REFRIGERANT LINE SET AND SEAL PER THE COOLER MANUFACTURER'S INSTALLATION INSTRUCTIONS AFTER LINE SET IS INSTALLED.
21. INSTALL REMOTE CONDENSER FOR ICE MACHINE ON ROOF AS DETAILED IN THE ARCHITECTURAL AND STRUCTURAL DRAWINGS. INSTALL REFRIGERANT LINE SET, THERMOSTATIC EXPANSION VALVE, SOLENOID VALVE, TEMPERATURE CONTROL, SIGHT GLASS, FILTER DRIER, PRESSURE CONTROL, LOW AMBIENT CONTROLS, AND WEATHERPROOF HOUSING. TRAP AND SLOPE REFRIGERANT LINES PER MANUFACTURER'S RECOMMENDATIONS. SEAL PIPING PENETRATIONS THROUGH ROOF. INSTALLATION SHALL COMPLY WITH ASHRAE/ANSI STANDARD 15. INSTALL THE REFRIGERANT LINE SET UNDER THE ROOF DECK TO WITHIN 3' OF THE REMOTE CONDENSER. IF REFRIGERANT PIPING TO ICE MAKER IS EXPOSED TO PUBLIC VIEW CONCEAL WITHIN A STAINLESS STEEL SHROUD AS SHOWN IN THE ARCHITECTURAL DRAWINGS.
22. INSTALL ROOFTOP EQUIPMENT PER MANUFACTURER'S INSTALLATION INSTRUCTIONS AND AS DETAILED IN THE ARCHITECTURAL AND STRUCTURAL DRAWINGS.
23. INSTALL EXHAUST FAN EF-1 PER DETAIL 5/M700 AND AS DETAILED IN THE ARCHITECTURAL AND STRUCTURAL DRAWINGS. INSTALL GREASE VIROGUARD SYSTEM FURNISHED BY CHIPOTLE ON EXHAUST FAN, EF-1.
24. PROVIDE SUPPLY DIFFUSER CONNECTION TO SUPPLY SYSTEM PER DETAIL 1/M700.
25. PROVIDE AUDIO/VISUAL REMOTE SMOKE DETECTOR ANNUNCIATOR WITH REMOTE KEY RATED RESET. WIRE A UNIT BACK TO EACH SMOKE DETECTOR. MOUNT UNIT 60" TYPICAL.
26. INSTALL REME HALO AIR PURIFIER FURNISHED BY TUV IN RTU PER DETAIL 6/M700. SEE ELECTRICAL DRAWINGS FOR POWER CONNECTION INFORMATION. INSTALL UV LIGHT STICKERS ON FACE OF ENCLOSURE PER DETAIL AND ON ANY RTU ACCESS DOOR(S) THROUGH WHICH THE REME HALO WOULD BE VISIBLE IF OPENED.
27. MAINTAIN 10' CLEARANCE BETWEEN WATER HEATER FLUE TERMINATION AND OUTSIDE AIR INTAKE. MAINTAIN 10' CLEARANCE BETWEEN WATER HEATER COMBUSTION AIR INTAKE AND EXHAUST FAN EF-1 DISCHARGE. SEE PLUMBING DRAWINGS FOR MORE INFORMATION ON WATER HEATER FLUE AND COMBUSTION AIR TERMINATIONS.
28. INSTALL SUPPLY REGISTERS SO THAT SUPPLY AIR HITS WALL ON OPPOSITE SIDE OF WALL AT APPROXIMATELY 7' AFF WITH NO DRAFTS FELT IN THE DINING ROOM.

cool line set



HVAC FLOOR PLAN
1/4" = 1'-0"

ARCHITECT OF RECORD



513 MAIN STREET, SUITE 300
FORT WORTH, TEXAS 76102
(817) 820-0433



PERMIT SET 03/27/24

COPYRIGHT 2019
THIS DRAWING IS AN INSTRUMENT OF SERVICE AND AS SUCH REMAINS THE PROPERTY OF CHIPOTLE MEXICAN GRILL, INC. PERMISSION FOR USE OF THIS DOCUMENT IS LIMITED AND CAN BE EXTENDED ONLY BY WRITTEN AGREEMENT WITH CHIPOTLE MEXICAN GRILL, INC.



CHIPOTLE MEXICAN GRILL, INC.
PO BOX 182566
COLUMBUS, OH 43218-2566
TELEPHONE: 614.318.2400
INTERNET: WWW.CHIPOTLE.COM

STORE NO.: 4899
SOUTH SHERMAN
2514 S. HIGHWAY 75.

Issue Record:
03/27/24 PERM

Revisions:

Drawn:
JW

Project N

CMG4

Conte

HY

CASE
Engineering Inc.

796 Meritt Court
St. Louis, MO 63026
T 636.349.1600
F 636.349.1730
CERTIFICATE OF AUTHORITY NO. F-20080



PERMIT SET 09/21/24

CONTRACT NO. 2024
 THIS DRAWING IS AN INSTRUMENT OF SERVICE AND IS NOT TO BE REPRODUCED OR TRANSMITTED IN ANY FORM OR BY ANY MEANS, ELECTRONIC OR MECHANICAL, WITHOUT THE WRITTEN PERMISSION OF THE ARCHITECT OF RECORD. THE ARCHITECT OF RECORD SHALL BE RESPONSIBLE FOR THE ACCURACY OF THE INFORMATION PROVIDED HEREON.



CHIPOTLE MEXICAN GRILL
 1000 N. GARDNER ST.
 FORT WORTH, TX 76102
 (817) 339-9999

STORE NO.: 4899
 SHERMAN

AIR BALANCE SCHEDULE

TAG	SUPPLY FLOW	RETURN FLOW	EXHAUST FLOW	SUBTOTAL
EF-1	0 CFM	0 CFM	2,550 CFM	2,550 CFM
EF-2	0 CFM	0 CFM	150 CFM	150 CFM
MAU-1	1,300 CFM	0 CFM	1,300 CFM	1,300 CFM
EFU-2	4,000 CFM	3,500 CFM	0 CFM	500 CFM
NET PRESSURIZATION	4,000 CFM	3,000 CFM	0 CFM	1,000 CFM

CONTROL FUNCTIONS

A. THE MAIN COOLING EXHAUST FAN AND MAKE-UP AIR UNIT SHALL BE INTERLOCKED TO OPERATE TOGETHER. THE CONTROL CIRCUIT IS ACTIVATED BY THE THERMOSTAT IN EACH ZONE. THE PROTECTION OVERRIDE SENSORS CONNECTED TO THE THERMOSTATS SHALL BE ACTIVATED BY OCCUPIED TIMES AND INTERMITTENTLY AS NEEDED TO MAINTAIN SET POINTS DURING UNOCCUPIED TIMES. OUTSIDE AIR DAMPERS SHALL BE OPEN CONTINUOUSLY DURING UNOCCUPIED TIMES. THE MAKE-UP AIR UNIT SHALL BE ON AND SHALL BE CONTROLLED BY OCCUPIED TIMES AND UNOCCUPIED STATUS BASED ON THE SCHEDULE IN THE ENERGY MANAGEMENT SYSTEM.

SANITIZING EQUIPMENT SCHEDULE

TAG	COUNT	DESCRIPTION	FURNISHED BY	INSTALLED BY	MANUFACTURER	MODEL	REMARKS
SB-1	2	LABORATORY UNIT	TUV	GC	RGF ENVIRONMENTAL GROUP	BRU ASSEMBLY	SEE ELECTRICAL SHEETS FOR CONNECTION INFORMATION
SH-1	2	HYGIC AIR PURIFICATION UNIT	TUV	GC	RGF ENVIRONMENTAL GROUP	REME-HALO	SEE DETAIL 6/MV20 FOR INSTALLATION INFORMATION
SI-1	3	ICE MACHINE TREATMENT SYSTEM	TUV	GC	RGF ENVIRONMENTAL GROUP	IMS-B-GA	SEE PLUMBING DRAWINGS FOR INSTALLATION INFORMATION

FAN SCHEDULE

TAG	DESCRIPTION	AIRFLOW	E.S.P.	WEIGHT	MOTOR POWER	FURNISHED BY	INSTALLED BY	MANUFACTURER	MODEL	REMARKS
EF-1	UPBLAST DUCT/EXHAUST FAN	2,550 CFM	1.45 in-wg	183 lb	2hp	HS	GC	CAPTIVE-AIRE	DUI289HFA	DIRECT DRIVE DUCT/EXHAUST FAN FURNISHED WITH WEAIR/PERFORM DISCONNECT AND VENTED ROOF CURB
EF-2	DOWNBLAST RESTROOM EXHAUST FAN	150 CFM	0.60 in-wg	100 lb	0.18 hp	HS	GC	CAPTIVE-AIRE	DR12HA	DIRECT DRIVE DOWNBLAST RESTROOM EXHAUST FAN FURNISHED WITH INTEGRAL DISCONNECT, SPEED CONTROL, BACKDRIFT DAMPER, AND CURB

AIR TERMINAL SCHEDULE

TAG	DESCRIPTION	FACE SIZE	MATERIAL	FINISH	MOUNTING	FURNISHED BY	INSTALLED BY	MANUFACTURER	MODEL	NOTES
CD1	PERFORATED CEILING DIFFUSER	24" X 24"	ALUMINUM	WHITE	UN-IN CEILING	GC	GC	NAI09	4320A TYPE L	PROVIDE WITH INTEGRAL ORB
CD2	PERFORATED CEILING DIFFUSER	24" X 12"	ALUMINUM	WHITE	UN-IN CEILING	GC	GC	NAI09	4320A TYPE L	PROVIDE WITH INTEGRAL ORB, REMOVE 4-WAY
CD3	PERFORATED CEILING DIFFUSER	12" X 12"	ALUMINUM	WHITE	SURFACE MOUNT	GC	GC	NAI09	4320A TYPE S	PROVIDE WITH INTEGRAL ORB
EF1	PERFORATED CEILING EXHAUST	12" X 12"	ALUMINUM	WHITE	SURFACE MOUNT	GC	GC	NAI09	4320A TYPE S	PROVIDE WITH INTEGRAL ORB
RF1	PERFORATED CEILING RETURN	48" X 24"	ALUMINUM	WHITE	UN-IN CEILING	GC	GC	NAI09	4320A TYPE L	
RF2	PERFORATED CEILING RETURN	48" X 24"	ALUMINUM	WHITE	SURFACE MOUNT	GC	GC	NAI09	4320A TYPE S	
SR1	ADJUSTABLE TURBO NOZZLE	SEE NECK	ALUMINUM	BLACK	WALL	GC	GC	AIR CONCEPTS	M-AD-SR1	PROVIDE WITH CONCEALED MOUNTING AND FACE ACCESSIBLE ORB
SR2	ARCHITECTURAL GRILLE	18" X 66"	ALUMINUM	BLACK	WALL	GC	GC	AIR CONCEPTS	RGDD-F	PROVIDE WITH CONCEALED MOUNTING AND FACE ACCESSIBLE ORB

CONDENSING UNIT SCHEDULE

TAG	DESCRIPTION	NOMINAL CAPACITY	NUMBER OF COMPRESSORS	CIRCUITS	TYPE	CHARGE	WEIGHT	MOCF	FLA	V/P/H	FURNISHED BY	INSTALLED BY	MANUFACTURER	MODEL	REMARKS
CU-1	CONDENSING UNIT - WALK-IN COOLER	1	1	1	R-404A	10.4 lb	250 lb	15 A	9 A	208/1/60	HS	GC	RUSSELL	PROGOMASDUALNT	FURNISHED WITH WALK-IN COOLER
CU-2	REMOTE CONDENSER - LOW CAPACITY ICE MAKER	0	1	1	R-404A	11.46 lb	100 lb			120/1/60	HS	GC	HOSHIZAKI	UNC-9F	FURNISHED WITH ICE MAKER
CU-3	REMOTE CONDENSER - SODA MACHINE ICE MAKER	0	1	1	R-404A	3.86 lb	100 lb			120/1/60	HS	GC	HOSHIZAKI	UNC-5F	FURNISHED WITH ICE MAKER

MAKEUP AIR UNIT SCHEDULE

TAG	DESCRIPTION	AIRFLOW	E.S.P.	INPUT	OUTPUT	EAT	WEIGHT	MOTOR POWER	FURNISHED BY	INSTALLED BY	MANUFACTURER	MODEL	REMARKS
MAU-1	DIRECT-FIRED MAKEUP AIR UNIT	1,300 CFM	0.50 in-wg	70,942 Btu/h	65,267 Btu/h	21 °F	495 lb	2 hp	208/3/60	HS	GC	A1-D-250-15D	12.5:1 MAX TURNDOWN, FURNISHED WITH DISCONNECT, ROOF CURB, SCREEN INTAKE, AND WASHABLE ALUMINUM FILTERS

KITCHEN HOOD SCHEDULE

TAG	DESCRIPTION	MAX COOKING TEMP	AIRFLOW	E.S.P.	EXHAUST PLENUM				PERFORATED SUPPLY PLENUMS				NO. OF LIGHT FIXTURES	WEIGHT	FURNISHED BY	INSTALLED BY	MANUFACTURER	MODEL	REMARKS					
					DUCT COLLARS	NO.	WIDTH	LENGTH	DUCT COLLARS	NO.	WIDTH	LENGTH												
HD-1	TYPE I CANOPY HOOD WITH PERFORATED MAU AND AC SUPPLY PLENUMS	600 °F	2,550 CFM	0.96 in-wg	1	10"	24"	13'-9"	4'-3"	54"	19"	1,300 CFM	3	6"	2'-4"	696 CFM	8	8"	8	1,029 lb	HS	GC	5424 ND-2-ACRSP-F	MAT'L: 18 GA. TYPE 430 SS. FURNISHED WITH QUARTER END PANELS, VAPORPROOF INCANDESCENT LIGHT FIXTURES, 16" TALL HE SS FILTERS, INTEGRAL UTILITY CABINET, ANSUL SYSTEM, DUCT COLLAR TEMPERATURE SENSOR, PREWIRE PACKAGE, SPARE FIRE SYSTEM DRY CONTACT, AND 4-POLE 20A CONTACTOR

ROOFTOP UNIT SCHEDULE

TAG	DESCRIPTION	NOMINAL CAPACITY	EER	TOTAL AIRFLOW	OA	E.S.P.	NET COOLING CAPACITY				NUMBER OF COMPRESSORS	CIRCUITS	REFRIGERANT	WEIGHT	MOCF	FLA	V/P/H	FURNISHED BY	INSTALLED BY	MANUFACTURER	MODEL	REMARKS			
							EAT	WB	EAT	INPUT													OUTPUT	EAT	
RTU-1	KITCHEN ROOFTOP UNIT	10 ton	12	4,000 CFM	500 CFM	1.0 in-wg	91,000 Btu/h	80 °F	67 °F	80 °F	250,000 Btu/h	205,000 Btu/h	65 °F	2	2	R-410A	1,445 lb	60 A	58 A	208/3/60	CMG	GC	CARRIER	48RCFN12	FURNISHED WITH COMP. ENTHALPY ECON., BAROMETRIC RELIEF, RET. SMOKE DETECTOR W/ REMOTE KEYPAD ANNUNCIATOR/RESET, M.O.D., MERV-8 FILTERS, HAL GUARD, TOOLLESS HINGED ACCESS PANELS, DISCONNECT, HOT GAS REHEAT & UNIT-MOUNTED CONVENIENCE RECEPTACLE
RTU-2	DINING ROOM ROOFTOP UNIT	10 ton	12	4,000 CFM	1,000 CFM	1.0 in-wg	118,000 Btu/h	80 °F	67 °F	80 °F	250,000 Btu/h	205,000 Btu/h	65 °F	2	2	R-410A	1,445 lb	60 A	58 A	208/3/60	CMG	GC	CARRIER	48RCFN12	FURNISHED WITH COMP. ENTHALPY ECON., BAROMETRIC RELIEF, RET. SMOKE DETECTOR W/ REMOTE KEYPAD ANNUNCIATOR/RESET, M.O.D., MERV-8 FILTERS, HAL GUARD, TOOLLESS HINGED ACCESS PANELS, DISCONNECT, HOT GAS REHEAT & UNIT-MOUNTED CONVENIENCE RECEPTACLE