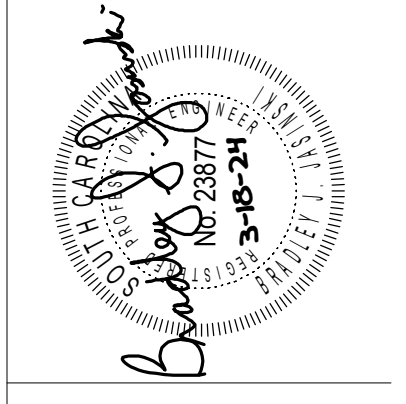


**1 FLOOR PLAN - HVAC**  
 M101 1/8" = 1'-0"

**Jumper  
 Carter  
 Sease**  
 ARCHITECTS

412 Meeting Street  
 West Columbia  
 South Carolina



These drawings are the property of Jumper Carter Sease Architects/PA, and may not be reproduced, copied or used in whole or in part without written consent of the architect. Any infringement will be subject to legal action.

**CLOVER HIGH SCHOOL  
 9TH GRADE FINE ARTS ADDITION  
 CLOVER SCHOOL DISTRICT  
 1625 STATE HWY 55 E, CLOVER, SC 29710**

BID DOCUMENTS

No	Description	Date

DRAWN BY: **BJJ**  
 CHECKED BY: **BJJ**  
 COMM NO: **21024**  
 DATE: **MARCH 18, 2024**  
 SHEET TITLE: **FLOOR PLAN - HVAC**

SHEET NO: **M101**

**Swygert & Associates**  
 CONSULTING ENGINEERS  
 DBA Swygert & Assoc., Ltd. Telephone: (803) 791-9300  
 Post Office Box 11666 Facsimile: (803) 791-6830  
 Columbia, S.C. 29211 mail@swygert-associates.com

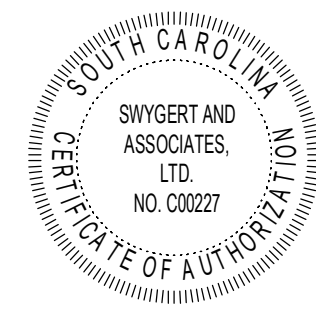
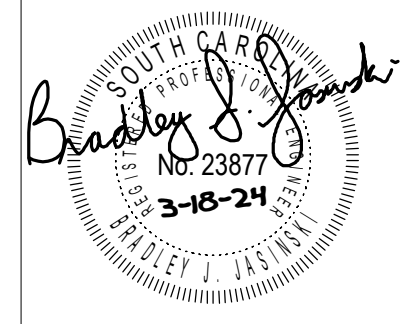
**Jumper**

**Carter**

**Sease**

**ARCHITECTS**

412 Meeting Street  
West Columbia  
South Carolina



**CLOVER HIGH SCHOOL  
9TH GRADE FINE ARTS ADDITION  
CLOVER SCHOOL DISTRICT  
1625 STATE HWY 55 E, CLOVER, SC 29710**

BID DOCUMENTS

No	Description	Date

DRAWN BY: **BJJ**  
 CHECKED BY: **BJJ**  
 COMM NO: **21024**  
 DATE: **MARCH 18, 2024**  
 SHEET TITLE: **SECOND FLOOR PLAN - HVAC**

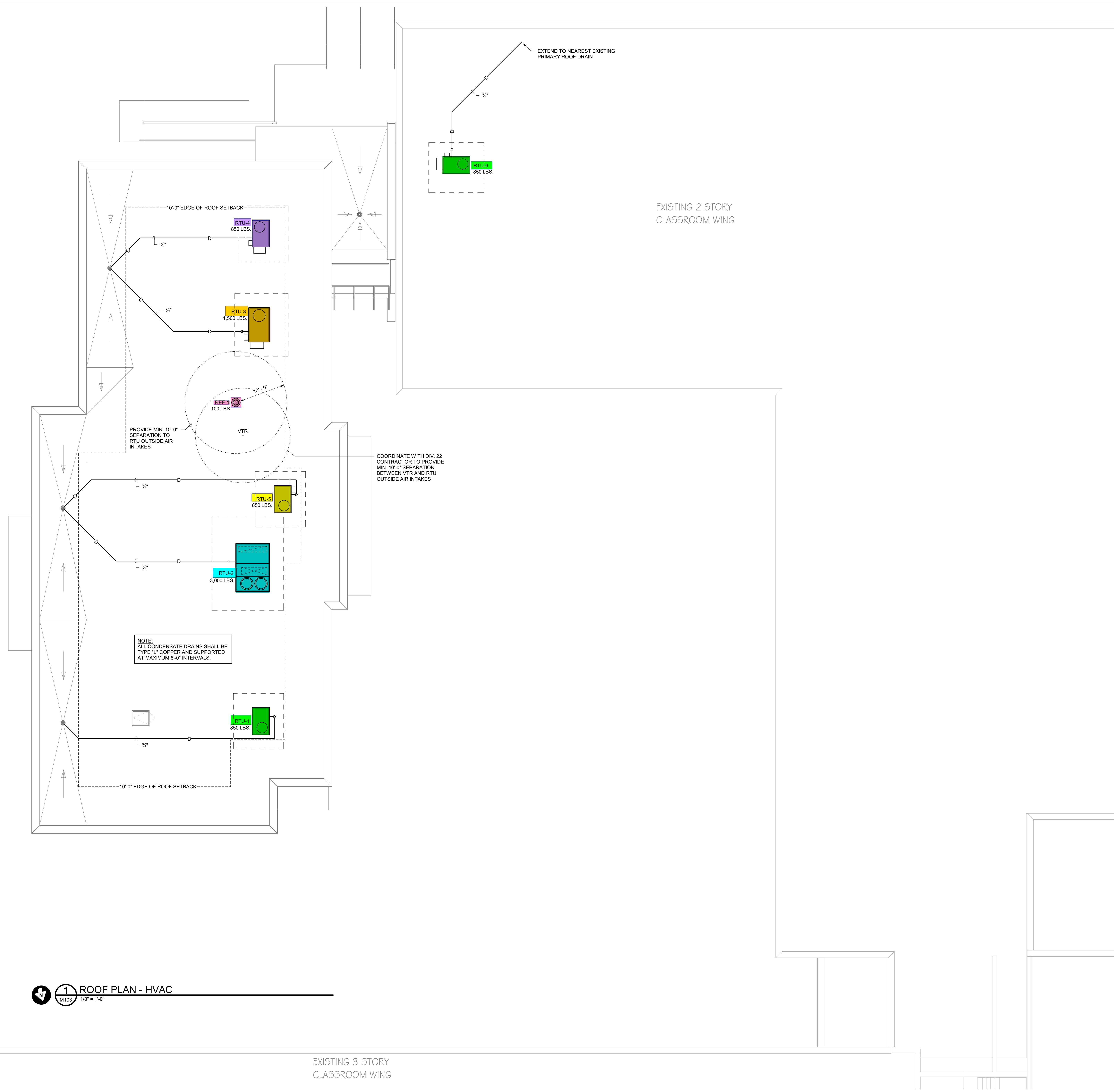
SHEET NO:  
**M102**



**1 SECOND FLOOR PLAN - HVAC**  
1/8" = 1'-0"

**Swygert & Associates**  
 CONSULTING ENGINEERS  
 1016 Sargent Assoc. - Ltd. Telephone: (803) 794-4300  
 Columbia, SC 29211 mail@swygertandassociates.com

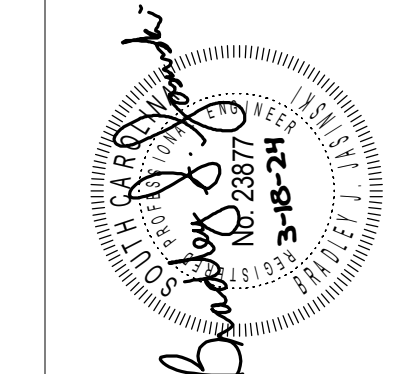
these drawings are the property of jumper carter sease architects/pa, and may not be reproduced, copied or used in whole or in part without written consent of the architect, any infringement will be subject to legal action



**1** ROOF PLAN - HVAC  
M103 1/8" = 1'-0"

**Jumper  
Carter  
Sease**  
ARCHITECTS

412 Meeting Street  
West Columbia  
South Carolina



These drawings are the property of Jumper Carter Sease Architects/PA, and may not be reproduced, copied or used in whole or in part without written consent of the architect. Any infringement will be subject to legal action.

**CLOVER HIGH SCHOOL  
9TH GRADE FINE ARTS ADDITION  
CLOVER SCHOOL DISTRICT  
1625 STATE HWY 55 E, CLOVER, SC 29710**

BID DOCUMENTS

No	Description	Date

DRAWN BY: **BJJ**  
 CHECKED BY: **BJJ**  
 COMM NO: **21024**  
 DATE: **MARCH 18, 2024**  
 SHEET TITLE: **ROOF PLAN - HVAC**

SHEET NO:

**Swygert & Associates**  
CONSULTING ENGINEERS  
DBA Swygert & Assoc., Ltd. Telephone: (803) 791-9300  
 Post Office Box 11666 Fax: (803) 791-6830  
 Columbia, S.C. 29211 mail@swygert-associates.com

**M103**