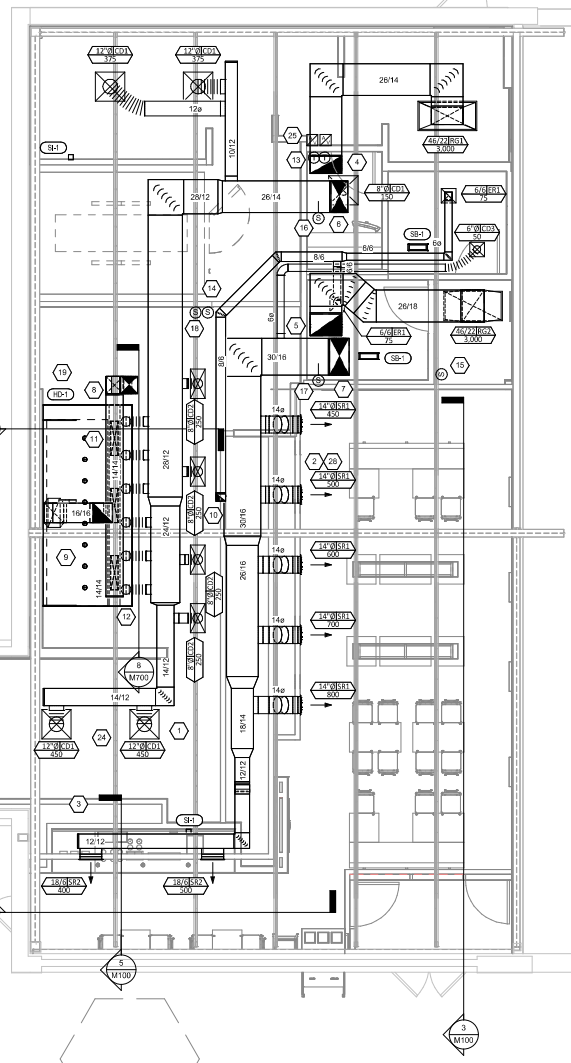
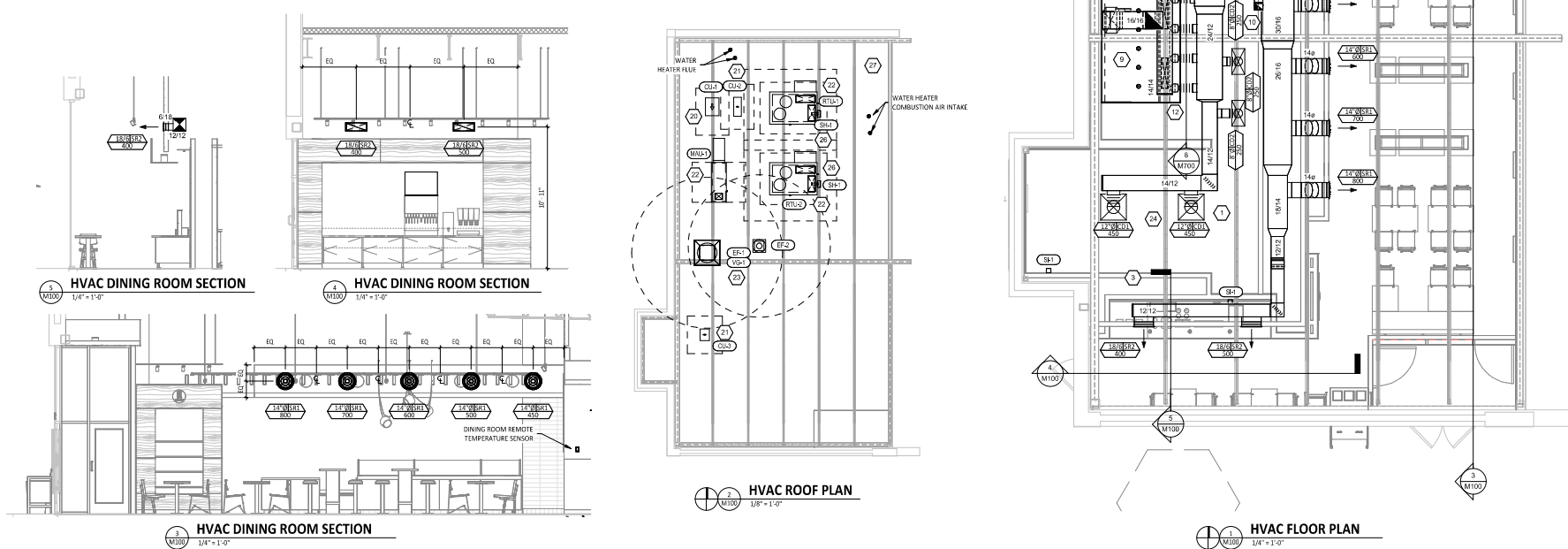


HVAC PLAN NOTES

- SEE ARCHITECTURAL REFLECTED CEILING PLAN FOR CEILING MOUNTED EQUIPMENT LOCATION. TYPICAL.
- PANTRY DUCTWORK VISIBLE THROUGH DINING ROOM SUPPLY REGISTERS BLACK. TYPICAL.
- PENETRATIONS THROUGH SHEAR WALL SHALL BE LIMITED TO 10" DIAMETER (OR A GROUP OF PENETRATIONS ALL CONTAINED WITHIN 10" DIAMETER). IF LARGER PENETRATIONS OR GROUPS OF PENETRATIONS ARE REQUIRED, COORDINATE WITH STRUCTURAL ENGINEER FOR APPROPRIATE BRACING. SEE STRUCTURAL DRAWINGS FOR SHEAR WALL LOCATION.
- 26/14 DUCT UP FOR TRANSITION TO RTU-1 RETURN CONNECTION IN ROOF CURB. RTU-1 SHALL HAVE AN INTEGRAL SMOKE DETECTOR MOUNTED IN THE RETURN AIR STREAM. INTERLOCK SMOKE DETECTOR TO RTU-1 OPERATION.
- 26/18 DUCT UP FOR TRANSITION TO RTU-2 RETURN CONNECTION IN ROOF CURB. RTU-2 SHALL HAVE AN INTEGRAL SMOKE DETECTOR MOUNTED IN THE RETURN AIR STREAM. INTERLOCK SMOKE DETECTOR TO RTU-2 OPERATION.
- 26/14 DUCT UP FROM BUILDING SUPPLY THROUGH ROOF. TRANSITION TO RTU-1 SUPPLY CONNECTION IN ROOF CURB.
- 30/16 DUCT UP FROM BUILDING SUPPLY TO RTU-2 SUPPLY CONNECTION. TRANSITION IN ROOF CURB.
- 14/14 DUCT UP THROUGH ROOF. TRANSITION TO MAU-1 SUPPLY CONNECTION IN ROOF CURB.
- 15/16 DUCT UP FROM HOOD THROUGH ROOF TO EF-1 COMPLIANT WITH NFPA 96. PROVIDE RADIUS ELBOWS WITH AN INSIDE RADIUS OF 0.5W AT ELBOWS IN GREASE DUCT.
- 8/6 DUCT UP THROUGH ROOF TO EF-2.
- 28/6 DUCT DOWN TO MAKEUP AIR PSP DUCT CONNECTION. TRANSITION TO SUPPLY PLENUM OPENING SIZE. TYPICAL FOR 3.
- 8" DIA. DUCT DOWN TO AG PSP DUCT CONNECTION. TRANSITION TO SUPPLY PLENUM OPENING SIZE. TYPICAL. CAP UNUSED DUCT CONNECTIONS.
- INSTALL SINGLE-GANG VERTICAL J-BOX FOR GRIDPOINT THERMOSTATS FURNISHED BY TEMS FOR RTU-1 AND RTU-2 AT THIS LOCATION AT 48" AFF. COORDINATE WITH ELECTRICAL SWITCHING IN THIS AREA. PROVIDE WIRING AS SHOWN IN DETAILS 8/E7/20.
- INSTALL GRIDPOINT ZONE SENSOR MODULE FURNISHED BY TEMS FOR RTU-1 AT THIS LOCATION 72" AFF DIRECTLY TO WALL (NO JUNCTION BOX). COORDINATE LOCATION WITH EQUIPMENT. PROVIDE WIRING AS SHOWN IN DETAIL 8/E7/10.
- INSTALL GRIDPOINT ZONE SENSOR MODULE FURNISHED BY TEMS FOR RTU-2 AT THIS LOCATION 66" AFF DIRECTLY TO WALL (NO JUNCTION BOX). COORDINATE LOCATION WITH EQUIPMENT. PROVIDE WIRING AS SHOWN IN DETAIL 8/E7/10.
- INSTALL GRIDPOINT SUPPLY PROBE FURNISHED BY TEMS FOR RTU-1 IN THE SUPPLY DUCTWORK UPSTREAM FROM THE FIRST BRANCH CONNECTION. PROVIDE WIRING AS SHOWN IN DETAIL 8/E7/10.
- INSTALL GRIDPOINT SUPPLY PROBE FURNISHED BY TEMS FOR RTU-2 IN THE SUPPLY DUCTWORK UPSTREAM FROM THE FIRST BRANCH CONNECTION. PROVIDE WIRING AS SHOWN IN DETAIL 8/E7/10.
- INSTALL REMOTE TEMPERATURE SENSOR FOR HOOD HD-1 AT THIS LOCATION 72" AFF. COORDINATE LOCATION WITH EQUIPMENT. PROVIDE (2) #18 G. THERMISTOR CABLE FROM TEMPERATURE SENSOR TO HOOD CONTROL PANEL.
- INSTALL KITCHEN HOOD, HD-1. SUPPORT HOOD PER MANUFACTURER'S INSTALLATION INSTRUCTIONS AND AS DETAILED IN THE ARCHITECTURAL AND STRUCTURAL DRAWINGS. INSTALL HOOD ACCORDING TO THE REQUIREMENTS OF THE LISTING, IN COMPLIANCE WITH NFPA-96, THE BUILDING CODE, AND AUTHORITIES HAVING JURISDICTION. HOOD SHALL HAVE AN INTEGRAL DUCT COLLAR TEMPERATURE SENSOR TO AUTOMATICALLY ENERGIZE THE EXHAUST AND MAKEUP AIR FANS IF COOKING TEMPERATURES ARE DETECTED. EXHAUST DUCT SYSTEM TO BE WELDED OR FACTORY-MANUFACTURED WATER AND AIR TIGHT. INSTALL CLEANOUTS PER CODE AND AS SHOWN. INSTALL HOOD PER DETAILS 2, 4, AND 9/M700. CHIPOTLE WILL PROVIDE AN INDEPENDENT TESTING AGENCY FOR TESTING THE INTEGRITY OF THE GREASE DUCT SYSTEM.

HVAC PLAN NOTES

- INSTALL REMOTE CONDENSING UNIT FOR WALK-IN COOLER ON ROOF AS DETAILED IN THE ARCHITECTURAL AND STRUCTURAL DRAWINGS. INSTALL REFRIGERANT LINE SET, THERMOSTATIC EXPANSION VALVE, SOLENOID VALVE, TEMPERATURE CONTROL, SIGHT GLASS, FILTER DRIER, PRESSURE CONTROL, LOW AMBIENT CONTROLS, AND WEATHERPROOF HOUSING. TRAP AND SLOPE REFRIGERANT LINES PER MANUFACTURER'S RECOMMENDATIONS. INSTALLATION SHALL COMPLY WITH ASHRAE/ANSI STANDARD 15. INSTALL THE REFRIGERANT LINE SET UNDER THE ROOF DECK TO WITHIN 3' OF THE CONDENSING UNIT. CUT 2-1/2" HOLE IN WALK-IN COOLER ROOF FOR REFRIGERANT LINE SET AND SEAL PER THE COOLER MANUFACTURER'S INSTALLATION INSTRUCTIONS AFTER LINE SET IS INSTALLED.
- INSTALL REMOTE CONDENSER FOR ICE MACHINE ON ROOF AS DETAILED IN THE ARCHITECTURAL AND STRUCTURAL DRAWINGS. INSTALL REFRIGERANT LINE SET, THERMOSTATIC EXPANSION VALVE, SOLENOID VALVE, TEMPERATURE CONTROL, SIGHT GLASS, FILTER DRIER, PRESSURE CONTROL, LOW AMBIENT CONTROLS, AND WEATHERPROOF HOUSING. TRAP AND SLOPE REFRIGERANT LINES PER MANUFACTURER'S RECOMMENDATIONS. SEAL PIPING PENETRATIONS THROUGH ROOF. INSTALLATION SHALL COMPLY WITH ASHRAE/ANSI STANDARD 15. INSTALL THE REFRIGERANT LINE SET UNDER THE ROOF DECK TO WITHIN 3' OF THE REMOTE CONDENSER. IF REFRIGERANT PIPING TO ICE MAKER IS EXPOSED TO PUBLIC VIEW CONCEAL WITHIN A STAINLESS STEEL SHROUD AS SHOWN IN THE ARCHITECTURAL DRAWINGS.
- INSTALL ROOFTOP EQUIPMENT PER MANUFACTURER'S INSTALLATION INSTRUCTIONS AND AS DETAILED IN THE ARCHITECTURAL AND STRUCTURAL DRAWINGS.
- INSTALL EXHAUST FAN EF-1 PER DETAIL 5/M700 AND AS DETAILED IN THE ARCHITECTURAL AND STRUCTURAL DRAWINGS. INSTALL GREASE WREGGARD SYSTEM FURNISHED BY CHIPOTLE ON EXHAUST FAN, EF-1.
- PROVIDE SUPPLY DIFFUSER CONNECTION TO SUPPLY SYSTEM PER DETAIL 1/M700. TYPICAL.
- PROVIDE AUDIO VISUAL REMOTE SMOKE DETECTOR ANNUNCIATOR WITH REMOTE KEY OPERATED RESET. WIRE A UNIT BACK TO EACH SMOKE DETECTOR. MOUNT UNIT 60" AFF. TYPICAL.
- INSTALL REME HALO AIR PURIFIER FURNISHED BY TUV IN RTU PER DETAIL 6/M700. SEE ELECTRICAL DRAWINGS FOR POWER CONNECTION INFORMATION. INSTALL LVW WIRING STICKERS ON FACE OF ENCLOSURE PER DETAIL AND ON ANY RTU ACCESS DOORS THROUGH WHICH THE REME HALO WOULD BE VISIBLE IF OPENED.
- MAINTAIN 10' CLEARANCE BETWEEN WATER HEATER FLEU TERMINATION AND OUTSIDE AIR INTAKES. MAINTAIN 6" CLEARANCE BETWEEN WATER HEATER COMBUSTION AIR INTAKE AND EXHAUST FAN EF-1 DISCHARGE. SEE PLUMBING DRAWINGS FOR MORE INFORMATION ON WATER HEATER FLEU AND COMBUSTION AIR TERMINATIONS.
- ADJUST SUPPLY REGISTERS SO THAT SUPPLY AIR FELS WALL ON OPPOSITE SIDE OF ROOM AT APPROXIMATELY 7' AFF WITH NO DRAFTS FELT IN THE DINING ROOM.



NATIONAL
 4635 Trueman Blvd, Suite 250
 Hilliard, Ohio 43026
 Phone: (614) 751-9610
 Fax: (614) 552-5240
 Contact: Cliff Kagar
 (614) 378-2024
 ckagar@nationalengineering.com

FOR CONSTRUCTION

CHIPOTLE MEXICAN GRILL, INC.
 1107/2025 PERMIT SET
 01/29/2025 BID SET
 03/24/2025 CONSTRUCTION SET



STORE NO.: 5517
 TERRE HAUTE EAST
 2499 SOUTH STATE ROAD 46
 SUITE#112, TERRE HAUTE, IN 47803

Drawn:	Checked:
CKR	JEI

Project No:
 2401136

Contract:
 HVAC PLAN

M100

PLUMBING SUPPLY PLAN NOTES

- CONNECT TO THE EXISTING 1-1/2" WATER SERVICE IN LOCATION SHOWN.
- PROVIDE 1/2" FILTERED WATER TO THE BAG-IN-BOX SODA CARBONATOR AT 102" AFF. SODA CARBONATOR SHALL HAVE AN INTEGRAL ASSE 1002-BAATED CARBONATOR BEVERAGE BACKFLOW PREVENTION DEVICE.
- PROVIDE WATER HEATERS DWH-1 AND DWH-2 PER DETAIL 1/9700.
- PROVIDE WATER HEATERS ADJUSTED TO WALL PER DETAIL 1/9700. PROVIDE 1/2" SUPPLY PIPES FROM FILTERS TO ICE MAKER AND SODA CARBONATOR AS SHOWN.
- PROVIDE 1/2" FILTERED WATER ROUGH-IN TO THE ICE MAKER AT 56" AFF. PROVIDE 6' LONG STAINLESS STEEL FLEXIBLE BRAIDED WASHING MACHINE WATER CONNECTION WITH MINIMUM 0.43" ID (BRASS CRAFT 1/2" 229A F OR EQUAL) FOR FINAL CONNECTION TO ICE MAKER.
- PROVIDE DOMESTIC WATER ROUGH-INS FOR THE MOP BASIN FAUCET AT 36" AFF. PROVIDE DOMESTIC WATER ROUGH-INS FOR THE CHEMICAL DISPENSER FAUCET (HB-1) AT 64" AFF DIRECTLY ABOVE THE MOP BASIN FAUCET. SEE ARCHITECTURAL ELEVATION FOR ADDITIONAL INFORMATION.
- CONNECT TO THE EXISTING 3" GAS LINE ON ROOF.
- PROVIDE GAS CONNECTIONS TO THE COOKING EQUIPMENT PER DETAIL 3/9700.
- SUPPORT THE GAS PIPE ON THE ROOF PER DETAIL 5/9700. WOOD BLOCKING IS NOT AN ACCEPTABLE METHOD OF SUPPORTING THE GAS PIPE.
- PROVIDE ACCESSIBLE LINE-SIZED GAS VALVE, DIRT LEG, AND UNION AT GAS CONNECTION TO THE EQUIPMENT.
- REFER TO ARCHITECTURAL DRAWINGS FOR PAINTING OF INTERIOR AND EXTERIOR EXPOSED GAS PIPE.
- PROVIDE DOMESTIC WATER ROUGH-INS FOR THE CHEMICAL DISPENSER FAUCET (HB-2) AT 52" AFF. SEE ARCHITECTURAL ELEVATION FOR ADDITIONAL INFORMATION.
- PROVIDE DOMESTIC WATER ROUGH-INS FOR THE VICTORY WASH DISPENSER FAUCET (HB-2) AT 52" AFF. SEE ARCHITECTURAL ELEVATION FOR ADDITIONAL INFORMATION.
- PROVIDE RESTROOM HAND SINK WALL CARRIAGE IN WALL PER PLUMBING SCHEDULE. INSTALL THERMOSTATIC MIXING VALVE FURNISHED WITH HAND SINK FAUCET SECURED TO WALL BELOW HAND SINK. ALL HAND SINK PIPING AND ACCESSORIES SHALL BE FULLY CONTAINED DIRECTLY BELOW HAND SINK.
- PROVIDE KITCHEN EQUIPMENT GAS SHUTOFF "B" BELOW THE CEILING PER DETAIL 4/9700.
- CONNECT CHEMICAL DISPENSER TO HB-1. CHEMICAL DISPENSER HAS AN INTEGRAL AIR GAP AS IS SHOWN IN DETAIL 10/9700.
- PROVIDE ASSE 10356 DOTO POINT-OF-USE THERMOSTATIC MIXING VALVE, WATTS LFUSG-B, ON WATER SUPPLY TO KITCHEN HAND SINKS. PROVIDE ANGLE STOP BELOW SINK, FASTEN MIXING VALVE TO WALL, AND MAKE FINAL CONNECTION FROM ANGLE STOPS TO MIXING VALVE AND FROM MIXING VALVE TO FAUCET USING BRAIDED STAINLESS STEEL HOSE. ADJUST MIXING VALVE FOR A DISCHARGE TEMPERATURE OF APPROXIMATELY 110°F.
- PROVIDE ACCESSIBLE VALVE IN WATER SUPPLY TO FIXTURE AS SHOWN.

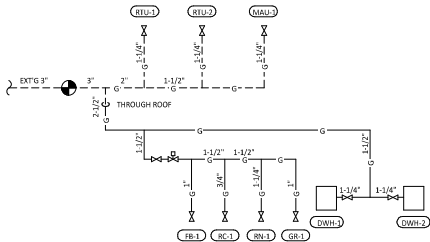
PLUMBING SUPPLY PLAN NOTES

- PROVIDE GAS CONNECTION TO THE RICE COOKER PER DETAIL 6/9700.
- PROVIDE GAS ROUGH-IN TO FRYER BEHIND RICE COOKER TABLE SO THAT VALVES AND DIRT LEG ARE ACCESSIBLE ONCE FRYER IS SECURED INTO PLACE.
- PROVIDE 1/2" FILTERED WATER ROUGH-IN TO THE ICE MAKER AT 24" AFF. PROVIDE 6' LONG STAINLESS STEEL FLEXIBLE BRAIDED WASHING MACHINE WATER CONNECTION WITH MINIMUM 0.43" ID (BRASS CRAFT 1/2" 229A F OR EQUAL) FOR FINAL CONNECTION TO ICE MAKER.
- INSTALL RGF IM5B ICE MAKER SANITIZER FURNISHED BY TUV PER CHIPOTLE'S INSTALLATION INSTRUCTIONS.
- PROVIDE 3/4" DOMESTIC HOT AND COLD WATER ROUGH-INS FOR THE PREP SINK (SK-2) FAUCET AT 24" AFF TO ALLOW FOR THE VICTORY WASH CHEMICAL DOCK TO BE INSTALLED DIRECTLY BELOW THE PREP SINK BASIN. MAKE FINAL CONNECTION TO PREP SINK FAUCET USING 3/4" BRAIDED STAINLESS STEEL WATER HEATER CONNECTOR HOSE.
- PROVIDE 1/2" HOT WATER TO THE DISH MACHINE AT 60" AFF ABOVE LEFT SIDE OF DISH MACHINE, MAKING FINAL CONNECTION USING HOSE FURNISHED WITH DISH MACHINE. PROVIDE WATER HAMMER ARRESTOR ON HOT WATER LINE.
- PROVIDE ROOF HYDRANT RH-1 WITH BOTTOM OF NOZZLE INSTALLED 24" ABOVE THE BOTTOM OF ROOF DECK. PROVIDE ACCESSIBLE ISOLATION VALVE IN WATER SUPPLY TO ROOF HYDRANT. SUPPORT ROOF HYDRANT PER THE MANUFACTURER'S INSTALLATION INSTRUCTIONS.
- PROVIDE FILTERED DOMESTIC WATER ROUGH-IN FOR THE SPEED ROLL POT FILLER FAUCET (PF-1) AT 42" AFF. SEE ARCHITECTURAL ELEVATION FOR DETAIL.
- PROVIDE AN ACCESSIBLE MAIN DOMESTIC WATER SHUTOFF VALVE ABOVE LAY-IN CEILING AS SHOWN. VALVE SHALL BE 12" ABOVE THE TOP OF THE LAY-IN CEILING. PERMANENTLY INSTALL THE "WATER SHUTOFF" SIGN TO THE CEILING GRID BELOW THE VALVE.
- INSTALL RGF IM5B ICE MAKER SANITIZER FURNISHED BY TUV PER CHIPOTLE'S INSTALLATION INSTRUCTIONS. LOCATE IM5B BELOW UTENSIL COUNTER IN A LOCATION THAT DOES NOT INTERFERE WITH THE ROLLING BACK BELOW THE UTENSIL COUNTER.
- PENETRATIONS THROUGH SHEAR WALL SHALL BE LIMITED TO 10" DIAMETER (OR A GROUP OF PENETRATIONS ALL CONTAINED WITHIN 30" DIAMETER). IF LARGER PENETRATIONS OR GROUPS OF PENETRATIONS ARE REQUIRED COORDINATE WITH STRUCTURAL ENGINEER FOR APPROPRIATE BRACING. SEE STRUCTURAL DRAWINGS FOR SHEAR WALL LOCATION.
- PROVIDE TRAP PRIMER ABOVE LAY-IN CEILING AS SHOWN. INSTALL PER MANUFACTURER'S INSTALLATION INSTRUCTIONS WITH A SERVICE VALVE AT THE TRAP PRIMER INLET. PROVIDE 1/2" DISTRIBUTION PIPES TO FLOOR DRAIN TRAP PRIMER CONNECTIONS) AS SHOWN. HORIZONTAL DISTRIBUTION PIPING SHALL HAVE CONTINUOUS SLOPE TO THE FLOOR DRAIN(S).
- REPLACE STOCK WATER CLOSET HANDLE WITH UNIVERSAL CABLE OPERATED HANDLE (FLUSHMATE AP300503 OR AP300504 - FIELD VERIFY COMPATIBILITY WITH FLUSHMATE SYSTEM IN WATER CLOSET).
- PROVIDE WATER SOFTENER PER DETAIL 16/9700.

PLUMBING GAS CONNECTIONS

TAG	DESCRIPTION	CONNECTION SIZE	EQUIVALENT LENGTH	INPUT
DWH-1	WATER HEATER (GAS TANKLESS)	3/4"	160'	159,000 Btu/h
DWH-2	WATER HEATER (GAS TANKLESS)	3/4"	160'	159,000 Btu/h
FB-1	GAS FRYER	3/4"	190'	90,000 Btu/h
GR-1	GAS GRIDDLE	1"	200'	310,000 Btu/h
MAU-1	DIRECT-FIRED MAKEUP AIR UNIT	1 1/2"	170'	225,000 Btu/h
RC-1	RICE COOKER	3/4"	190'	33,000 Btu/h
RN-1	6 BURNER RANGE	3/4"	200'	192,000 Btu/h
RTU-1	KITCHEN ROOFTOP UNIT	3/4"	170'	180,000 Btu/h
RTU-2	DINING ROOM ROOFTOP UNIT	3/4"	160'	150,000 Btu/h
GRAND TOTAL			MAX-200	1,438,000 Btu/h

- NOTES:
 1. PRESSURE REQUIRED AFTER METER: 7" W.C.
 2. DISTANCES ARE APPROXIMATE



GAS DISTRIBUTION DIAGRAM
NOT TO SCALE

PLUMBING FIXTURE SUPPLY CONNECTIONS

TAG	DESCRIPTION	CONNECTION SIZE	ROUGH-IN TYPE	CW	HW	WSU	TOTAL	COUNT	TOTAL WSU
BFP-1	RPE BACKFLOW PREVENTER	1/2"	DIRECT	0	0	0	0	1	0
DM-1	DISH SANITIZING MACHINE (PUMPED OUTLET)	0"	HOSE 1/2"	0	3	3	3	1	3
ET-1	EXPANSION TANK	3/4"	DIRECT	0	0	0	0	1	0
HB-1	CHEMICAL DISPENSER HOSE BIB	1/2"	MIP	2.25	2.25	3	2	6	0
HB-2	VEGETABLE WASH HOSE BIB	1/2"	MIP	1.5	1.5	1.5	1	1.5	0
HS-1B	RESTROOM HAND SINK FAUCET	1/2"	ANGLE 3/8"	1.5	1.5	2	2	4	0
HS-2	KITCHEN HAND SINK	1/2"	ANGLE 3/8"	1.5	1.5	2	4	8	0
IM-1	ICE MAKER - SODA	1/2"	HOSE 1/2"	1	1	1	1	1	0
IM-2	ICE MAKER - SODA	1/2"	HOSE 1/2"	1	1	1	1	1	0
IM-3	ICE MAKER - SODA	1/2"	HOSE 1/2"	1	1	1	1	1	0
MB-1B	MOP SINK FAUCET	1/2"	MIP	2.25	2.25	3	1	3	0
PF-1	SPEED ROLL FAUCET	3/4"	MIP	1.5	1.5	1	1.5	1.5	0
RH-1	FREEZE PROOF ROOF HYDRANT	3/4"	DIRECT	1	1	1	1	1	0
SC-1	BAG-IN-BOX SODA RACK WITH CARBONATORS	1/2"	ANGLE 3/8"	1	1	1	1	1	0
SK-1	THREE COMPARTMENT SINK	1/2"	ANGLE 1/2"	3	3	4	1	4	0
SK-2	PREP SINK	3/4"	ANGLE 3/4"	3	3	4	1	4	0
TP-3	TRAP PRIMER (THREE-FOUR FLOOR DRAINS)	1/2"	DIRECT	0	0	0	2	0	2
WC-1	WATER CLOSET	1/2"	ANGLE 3/8"	2	2	2	2	4	0
WH-1	FREEZE PROOF WALL HYDRANT	3/4"	DIRECT	1	1	1	2	2	0
WS-1	WATER SOFTENER	1"	DIRECT	0	0	0	1	0	0
GRAND TOTAL				46	46	46	46	46	0

ROUGH-IN TYPE KEY

ANGLE 3/8" BRASS CRAFT KTR19 OR EQUAL (BRASS/CHROME 1/4 TURN ANGLED BALL STOP WITH 3/8" COMPRESSION CONNECTION)

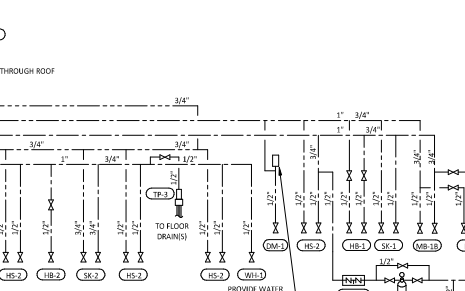
ANGLE 1/2" BRASS CRAFT R39X OR EQUAL (BRASS/CHROME MULTI-TURN ANGLED STOP WITH 1/2" COMPRESSION CONNECTION)

ANGLE 3/4" EVERFLOW 74342-NL W/ 3/4" SWEAT X MIP ADAPTER OR EQUAL (BRASS ANGLE STOP W/ 3/4" FIP INLET AND OUTLET)

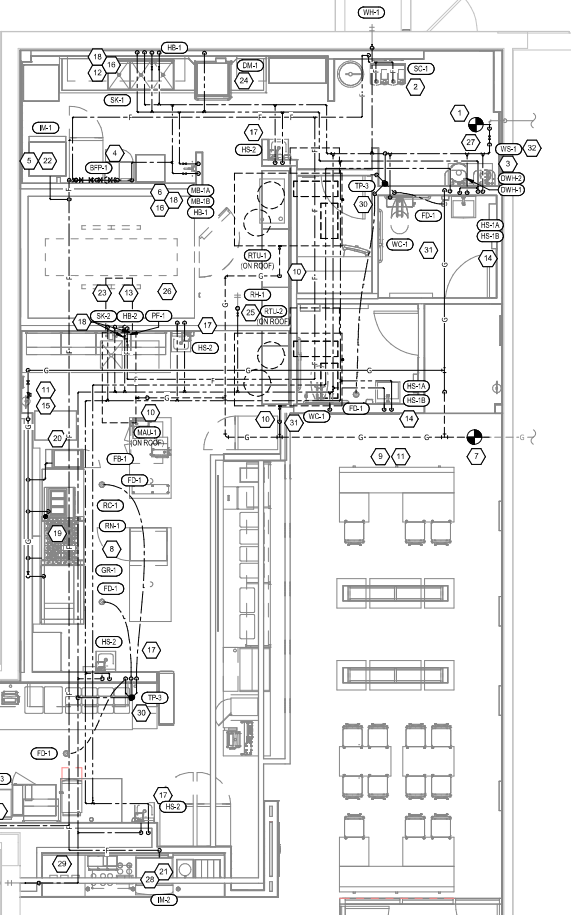
DIRECT PROVIDE COPPER PIPE IN CONNECTION SIZE SHOWN TO FIXTURE

HOSE 1/2" ARROWHEAD BRASS WMSDF OR EQUAL (BRASS/CHROME WASHING MACHINE VALVE W/ 3/4" MHT OUTLET)

PROVIDE PIPE WITH MIP THREAD STUBBED OUT OF WALL IN CONNECTION SIZE SHOWN AND LENGTH COMPATIBLE WITH FIXTURE AND WALL MATERIALS/FINISHES.



PLUMBING SUPPLY DIAGRAM
NOT TO SCALE



PLUMBING SUPPLY PLAN
1/4" = 1'-0"

NATIONAL
 4635 Trueman Blvd., Suite 250
 Hilliard, Ohio 43026
 Phone: (614) 751-9610
 Fax: (614) 552-5240
 Contact: Cliff Kigar
 (614) 328-2024
 ckigar@nationalengineering.com

FOR CONSTRUCTION

COPYRIGHT 2025
 THIS DRAWING IS AN INSTRUMENT OF SERVICE AND AS SUCH REMAINS THE PROPERTY OF CHIPOTLE MEXICAN GRILL, INC. PERMISSION FOR USE OF THE DOCUMENT IS LIMITED AND CAN BE REVOKED AT ANY TIME WITHOUT AGREEMENT WITH CHIPOTLE MEXICAN GRILL, INC.



CHIPOTLE MEXICAN GRILL, INC.
 PO BOX 161566
 COLUMBUS, OH 43216-1566
 TELEPHONE: 614.392.2400
 INTERNET: WWW.CHIPOTLE.COM

STORE NO.: 5517
 TERRE HAUTE EAST
 2499 SOUTH STATE ROAD 46
 SUITE#112, TERRE HAUTE, IN 47803

Issue Record:

Date	Description
01/07/2025	PERMIT SET
01/29/2025	30D SET
02/24/2025	CONSTRUCTION SET
01/28/2025	0801 2025

Drawn: []
 Checkd: []
 CRK: []

Project No.: 2401136

PLUMBING PLAN
WATER & GAS

P100

PLUMBING FIXTURE SCHEDULE

TAG	DESCRIPTION	FURNISHED BY	INSTALLED BY	BASIS FOR DESIGN		REMARKS	COUNT	CONNECTION SIZE			WATER SUPPLY FIXTURE UNITS			DRAINAGE FIXTURE UNITS
				MANUFACTURER	MODEL			CW	HW	WASTE	CW	HW	TOTAL	
BP-1	RPT BACKFLOW PREVENTER	GC	GC	CONBRACO	4ALF-203-1ZF	LEAD FREE REDUCED PRESSURE PRINCIPLE BACKFLOW PREVENTER WITH AUTOMATIC DIFFERENTIAL RELIEF VALVE	1	1/2"			0	0	0	
DM-1	DISH SANITIZING MACHINE (PUMPED OUTLET)	KES	GC	SEE ARCH	--	CHEMICAL SANITIZING DISH MACHINE WITH INTEGRAL ELECTRIC BOOSTER HEATER AND PUMPED OUTLET	1	0"	1/2"	5/8"	0	3	3	7
ET-1	EXPANSION TANK	GC	GC	AMTROL	ST-5	2 GALLON CAPACITY	1	3/4"			0		0	
FB-1	GAS FRYER	KES	GC	SEE ARCH	--		1							
FCO-2	FLOOR CLEANOUT (4")	GC	GC	SIOUX CHIEF	852 4PWR	ON GRADE ADJUSTABLE CLEANOUT WITH INTERNAL THREADED CLEANOUT PLUG AND ROUND NICKEL BRONZE RING AND COVER	6			4"				0
FD-1	FLOOR DRAIN	GC	GC	SIOUX CHIEF	842-2-PWR	ADJUSTABLE FLOOR DRAIN WITH PVC BODY, ROUND POLISHED METAL RING AND STRAINER, AND TRAP PRIMER PORT	5	1 1/2"		2"				2
FNL-1	FUNNEL DRAIN	GC	GC	JAY R. SMITH	3823T	FUNNEL DRAIN WITH CAST BRONZE BODY AND THREADED OUTLET	1			2"				2
FS-1	FLOOR SINK	GC	GC	SIOUX CHIEF	861-3PU2	HEAVY DUTY PVC FLOOR SINK WITH ALUMINUM DOME BOTTOM STRAINER AND OPEN HALF PVC GRATE	7			3"				5
GI-1	GREASE INTERCEPTOR	GC	GC	CUSTOM	--	1,500 GALLON PRECAST GREASE INTERCEPTOR	1			4"				0
GR-1	GAS GRIDDLE	KES	GC	SEE ARCH	--		1							
HR-1	CHEMICAL DISPENSER HOSE BIB	KES	GC	SEE ARCH	--	COMMERCIAL QUALITY HOT & COLD MIXING WALL HYDRANT. SUPPLY ARMS SHALL HAVE INTERNAL SHUT OFF STOP AND CHECK VALVE. FAUCET HAS FEMALE NPT INLETS.	2	1/2"	1/2"		2.25	2.25	3	
HB-2	VEGETABLE WASH HOSE BIB	KES	GC	SEE ARCH	--	SILL FAUCET WITH NPT FEMALE INLET	1	1/2"			1.5		1.5	
HS 1A	RESTROOM HAND SINK	GC	GC	AMERICAN STANDARD	9024.001EC	ADA ACCESSIBLE, WALL MOUNTED, PORCELAIN LAVATORY. PROVIDE ZURN Z1231-D FOR BACK TO BACK APPLICATIONS) CONCEALED ARM CARRIER IN WALL.	2			2"				1
HS-1B	RESTROOM HAND SINK FAUCET	KES	GC	SEE ARCH	--	METURD FAUCET WITH 0.5 GPM AIRATOR AND FURNISHED WITH THERMOSTATIC MIXING VALVE. ADJUST FAUCET FOR 30 SECOND RUN TIME.	2	1/2"	1/2"		1.5	1.5	2	
HS-2	KITCHEN HAND SINK	KES	GC	SEE ARCH	--	STAINLESS STEEL SINK WITH WALL MOUNTING BRACKET AND BACKSPASH MOUNTED FAUCET WITH SWIVEL GOOSENECK	4	12"	1/2"	2"	1.5	1.5	2	1
IM-1	ICE MAKER - BDR	KES	KES	SEE ARCH	--	BACK OF HOUSE ICE MAKER WITH BIN (STANDARD CAPACITY REMOTE AIR COOLED)	1	1/2"			1		1	
IM-2	ICE MAKER - SODA	KES	KES	SEE ARCH	--	SODA MACHINE MOUNTED ICE MACHINE (INTERNAL AIR COOLED)	1	1/2"			1		1	
IM-3	ICE MAKER - SODA	KES	KES	SEE ARCH	--	SODA MACHINE MOUNTED ICE MACHINE (REMOTE AIR COOLED)	1	1/2"			1		1	
MB-1A	MOP BASIN	GC	GC	FIAT	MSB2424	PROVIDE 24"x24"x10" MOLDED-STONE MOP BASIN. INSTALL MOP BASIN IN A BED OF GROUT SO THERE ARE NO VOIDES BETWEEN THE MOP BASIN AND THE SLAB.	1			3"				2
MB-1B	MOP SINK FAUCET	KES	GC	SEE ARCH	--	SERVICE SINK FAUCET WITH BUILT IN STOPS, LEVER HANDLES, WALL BRACE, AND NPT FEMALE INLETS	1	1/2"	1/2"		2.25	2.25	3	
PF-1	SPEED FILL FAUCET	KES	GC	SEE ARCH	--	WALL-MOUNTED POT FILLER W/ SELF-CLOSING FILLER VALVE AND NPT FEMALE INLET	1	3/8"			1.5	1.5	1.5	
RC-1	RICE COOKER	KES	GC	SEE ARCH	--		1							
RH-1	FREEZE PROOF ROOF HYDRANT	GC	GC	HOEFTNER	2131R	AUTOMATIC DRAINING, FREEZELESS ROOF HYDRANT WITH ANTI-SIPHON VACUUM BREAKER HOEFTNER PRODUCTS (408) 847-7913	1	3/4"			1		1	
RN-1	6 BURNER RANGE	KES	GC	SEE ARCH	--		1							
SC-1	BAG-IN BOX SODA RACK WITH CARBONATORS	SPS	SPS	SEE ARCH	--	SODA CARBONATOR(S) SHALL HAVE AN INTEGRAL ASSE 1002-RATED CARBONATED BEVERAGE BACKFLOW PREVENTION DEVICE.	1	1/2"			1		1	
SK-1	THREE COMPARTMENT SINK	KES	GC	SEE ARCH	--	THREE-COMPARTMENT WARE-WASHING SINK FURNISHED WITH (1) PRE-RINSE UNIT WITH ADD-ON FAUCET	1	1/2"	1/2"	2"	3	3	4	0
SK-2	PREP SINK	KES	GC	SEE ARCH	--	STAINLESS STEEL PREP TUB WITH INTEGRAL PREP SINK - FURNISHED WITH "BIG FLO" FAUCET	1	3/4"	3/4"	2"	3	3	4	0
TD-1	TRENCH DRAIN	GC	GC	ZURN	2886 8601 8602	6" X 160" HOPE TRENCH DRAIN (SLOPED FROM 3.50" TO 4.70") WITH (2) CLOSED END CAPS, (1) 4" NO HUB BOTTOM OUTLET, AND CLASS A HEEL-PROOF POLYETHYLENE GRATES. SEE DETAIL ON SHEET P700 FOR REDUCTION TO 2" DRAIN CONNECTION.	1	3/4"	3/4"	2"				2
TP-3	TRAP PRIMER (THREE-HOUR FLOOR DRAINS)	GC	GC	PRECISION PLUMBING PRODUCTS	PJ-500 W/ DU-U	TRAP PRIMER WITH INTEGRAL VACUUM BREAKER AND DISTRIBUTION UNIT. CAP UNUSED DISTRIBUTION UNIT OUTLETS.	2	1/2"			0		0	
WC-1	WATER CLOSET	GC	GC	KOHLER	K-3519 W/ SEAT K-4666-C	WHITE ENIGLINE 1.0 GPF, 17" 1/8" HIGH, ADA ACCESSIBLE, PRESSURE ASSIST WATER CLOSET WITH OPEN-FRONT SEAT. INSTALL TOP LEVER ON THE TANK TO THE OPEN SIDE OF THE STALL (ADD 9A TO THE MODEL FOR RIGHT HAND TRIP LEVER).	2	1/2"		3"	2	2	4	
WH-1	FREEZE PROOF WALL HYDRANT	GC	GC	WOODFORD	MODEL 65	AUTOMATIC DRAINING, FREEZELESS WALL HYDRANT WITH ANTI-SIPHON VACUUM BREAKER. PROVIDE WITH STEM LONG ENOUGH TO REACH INSIDE THE THERMAL ENVELOPE OF THE BUILDING.	2	3/4"			1		1	
WS-1	WATER SOFTNER	KES	GC	CUNO	CFSM1754F	POINT OF ENTRY HIGH CAPACITY WATER TREATMENT SYSTEM. PROVIDE STARTUP PER MANUFACTURER'S INSTALLATION INSTRUCTIONS.	1	1"			0		0	

WATER HEATER SCHEDULE

TAG	DESCRIPTION	NATURAL GAS		ELECTRICAL		FURNISHED BY	INSTALLED BY	BASIS FOR DESIGN		REMARKS
		INPUT	CONNECTION SIZE	FLA	V/P/H			MANUFACTURER	MODEL	
DWH-1	WATER HEATER (GAS TANKLESS)	199,000 Btu/h	3/4"		120/1/60	GC	GC	NAVEN	NPE-240A2	RATED FLOW RATE: 5.6 GPM @ 67°F RISE THERMAL EFFICIENCY: 90% PROVIDE WITH LEAD FREE "PLUMB EASY VALVE SET". GC SHALL PURCHASE WATER HEATER DIRECTLY THROUGH A NAVEN AUTHORIZED DISTRIBUTOR (1-800-519-8794 OR WWW.NAVEN.COM TO LOCATE AUTHORIZED DISTRIBUTOR).
DWH-2	WATER HEATER (GAS TANKLESS)	199,000 Btu/h	3/4"		120/1/60	GC	GC	NAVEN	NPE-240A2	RATED FLOW RATE: 5.6 GPM @ 67°F RISE THERMAL EFFICIENCY: 90% PROVIDE WITH LEAD FREE "PLUMB EASY VALVE SET". GC SHALL PURCHASE WATER HEATER DIRECTLY THROUGH A NAVEN AUTHORIZED DISTRIBUTOR (1-800-519-8794 OR WWW.NAVEN.COM TO LOCATE AUTHORIZED DISTRIBUTOR).

NATIONAL
 4635 Trueman Blvd, Suite 250
 Hilliard, Ohio 43026
 Phone: (614) 751-9610
 Fax: (614) 552-5240
 Contact: Cliff Kigar
 (614) 328-2024
 ckigar@nationaleengineering.com

FOR
 CONSTRUCTION

CHIPOTLE MEXICAN GRILL, INC.
 11000 W. ALAMO AVENUE, SUITE 100
 DENVER, CO 80234
 TEL: (303) 733-9300
 WWW.CHIPOTLE.COM



STORE NO.: 5517
 TERRE HAUTE EAST
 2499 SOUTH STATE ROAD 46
 SUITE#112, TERRE HAUTE, IN 47803

Issue/Revised:
 01/07/2025 PERMIT SET
 01/29/2025 BID SET
 03/24/2025 CONSTRUCTION SET
 Drawn: _____
 Checked: _____
 Date: _____
 Project No.: _____
 2401130
 Contain: _____

PLUMBING
 SCHEDULES

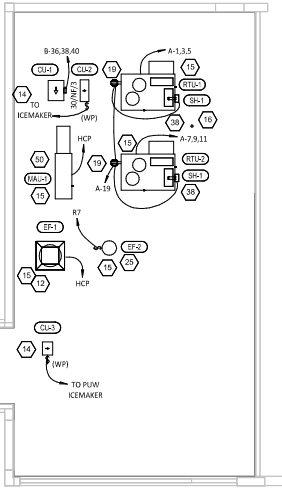
P600

ELECTRICAL POWER PLAN NOTES

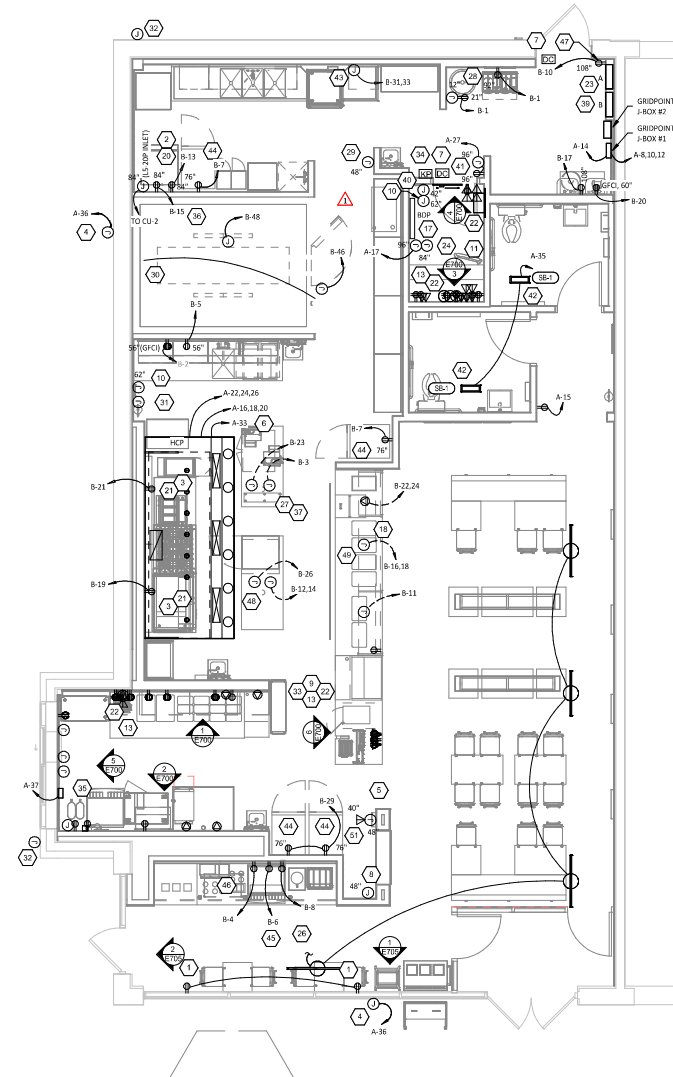
- 1 SHOW ROOM WINDOW RECEPTACLE. COORDINATE EXACT RECEPTACLE MOUNTING HEIGHT IN THE FIELD. LOCATION SHALL BE IN THE DRYWALL IMMEDIATELY ABOVE THE MAIN STORE FRONT WINDOW AND AS SHOWN IN THE DINING ROOM ELECTRICAL ELEVATIONS ON SHEET E700.
- 2 ICE MACHINE ELECTRICAL TIEN. COORDINATE EXACT LOCATION WITH EQUIPMENT INSTALLER PRIOR TO ROUGH-IN. PROVIDE 15-20P FLANGED/NET WIRES TO THE REMOTE CONDENSER. PROVIDE 48" COIDS, ONE WITH 5-20P END AND ONE WITH 15-20P END. FROM ICE MAKER TO RECEPTACLE AND FLANGED INLET.
- 3 CONNECT RECEPTABLES SERVING EQUIPMENT BELOW THE KITCHEN HOOD TO THE CIRCUITS SHOW THROUGH THE CONTACTOR INTEGRAL TO THE HOOD CONTROL PANEL. INTEGRAL CONTACTOR SHALL BE INTERLOCKED TO HOOD FIRE PROTECTION SYSTEM SO THAT RECEPTABLES ARE DE-ENERGIZED UPON ACTIVATION OF HOOD FIRE PROTECTION SYSTEM.
- 4 JUNCTION BOX FOR EXTERIOR SIGN LIGHTING. COORDINATE EXACT LOCATION WITH CHIPOTLE'S CONSTRUCTION MANAGER AND THE SIGN INSTALLER PRIOR TO ROUGH-IN. CONNECT TO CIRCUIT SHOWN THROUGH THE EXTERIOR LIGHTING CONTACTOR PANEL AS SHOWN IN DETAIL E710.
- 5 PROVIDE A SINGLE GANG VERTICAL JUNCTION BOX FOR THE KITCHEN EXHAUST SUPPRESSION SYSTEM PULL STATION. PROVIDE A 1/2" CONDUIT FROM THE J-BOX TO 6" ABOVE THE CEILING AND TERMINATE WITH A CONDUIT BUSHING. COORDINATE EXACT LOCATION WITH THE KITCHEN EXHAUST SUPPRESSION SYSTEM INSTALLER AND THE FIRE MARSHAL PRIOR TO ROUGH-IN.
- 6 HOOD CONTROL PANEL AND KITCHEN EXHAUST SUPPRESSION SYSTEM CABINET SHALL BE LOCATED WITHIN THE INTEGRAL HOOD UTILITY CABINET. PROVIDE FINAL ELECTRICAL CONNECTIONS PER THE MANUFACTURER'S INSTALLATION INSTRUCTIONS NECESSARY FOR A COMPLETE AND OPERATIONAL SYSTEM.
- 7 PROVIDE A RECESSED SINGLE-GANG J-BOX ABOVE DOOR AND 3" IN FROM LATCH SIDE OF DOOR FOR THE INSTALLATION OF THE SECURITY SYSTEM DOOR CONTACT WITH A 1/2" CONDUIT TO ABOVE THE LAY-IN CEILING. TERMINATE CONDUIT WITH A CONDUIT BUSHING.
- 8 PROVIDE AN EMPTY SINGLE GANG J-BOX FOR VOLUME CONTROLS. INSTALL 16/2 SPEAKER WIRE FURNISHED BY MSS FROM THE J-BOX TO THE AMPLIFIER IN THE OFFICE WITH 3 FEET OF SLACK AT EACH END.
- 9 COORDINATE DATA/POWER RECEPTACLE MOUNTING REQUIREMENTS WITH THE CASE WORK INSTALLER PRIOR TO ROUGH-IN. PROVIDE ROUGH-IN FOR LAUNCHPOINT AS NOTED. LAUNCHPOINT WILL BE FURNISHED AND INSTALLED BY CHIPOTLE WITH THE WALLSATION AT 62" AFF. PROVIDE A 4" X 2-1/2" DEEP OCTAGON J-BOX WITH 1-1/2" EXTENSION RING AT 62" AFF FOR THE WALLSATION INSTALLATION WITH A 1" CONDUIT WITH PULL STRING FROM THE J-BOX TO ABOVE THE OFFICE CEILING.
- 11 PROVIDE (2) EMPTY 2" CONDUITS WITH PULL STRINGS FROM THE BASE BUILDING'S TELEPHONE AND DATA SERVICE ENTRANCE LOCATIONS TO THE SPACE ABOVE THE OFFICE CEILING. TERMINATE WITH CONDUIT BUSHING.
- 12 PROVIDE A SUITABLE LENGTH OF LIQUID-TIGHT CONDUIT TO THE EXHAUST FAN EF-1 TO ALLOW THE EXHAUST FAN TO HINGE COMPLETELY OPEN WHEN THE VIBROGLAD SYSTEM IS INSTALLED.
- 13 PROVIDE (2) 1/2" CONDUITS TO THE SPACE ABOVE THE OFFICE CEILING. TERMINATE WITH CONDUIT BUSHING.
- 14 PROVIDE ONE PHASE, ONE NEUTRAL, AND ONE GROUND CONDUCTOR FROM THE ICE MAKER TO THE REMOTE CONDENSING UNIT.
- 15 UNIT SHALL HAVE AN INTEGRAL, NON-FUSED DISCONNECT SWITCH.
- 16 PROVIDE 3" CONDUIT (EMT, IMC, OR RMC) THROUGH ROOF. TERMINATE WITH WEATHERHEAD EVEN WITH TOP OF PARAPET FOR FUTURE CELL BOOSTER. SECURE CONDUIT TO STRUCTURE TO SUPPORT FUTURE ANTENNA INSTALLATION. PROVIDE 1/4" X 2" X 10" 16-HOLE GROUNDING BUSBAR (BUNNY BRN3120A OR EQUIVA) MOUNTED TO CONDUIT ABOVE ROOF FOR FUTURE CONNECTION OF LIGHTNING ARRESTORS. PROVIDE #2 CU GROUND FROM BUSBAR TO MAIN ELECTROD GROUNDING CONDUCTOR.
- 17 INSTALL THE BYPASS DISTRIBUTION PANEL (BDP) CONSISTING OF THE NIT POWER-HUB AND UPS FURNISHED BY THE TENANT ON WALL 12" BELOW CEILING. INSTALL POWER-HUB AND UPS AND CONNECT POWER-HUB TO INPUT AND OUTPUT J-BOXES PER THE MANUFACTURER'S INSTALLATION INSTRUCTIONS.
- 18 ROUGH-INS TO SERVE LINE AND POS EQUIPMENT ARE UNDERGROUND. COORDINATE ROUGH-IN REQUIREMENTS AND LOCATIONS WITH EQUIPMENT MANUFACTURER PRIOR TO ROUGH-IN.
- 19 ROOFTOP UNIT SHALL HAVE AN INTEGRAL UNIT-MOUNTED GFCI RECEPTACLE. PROVIDE CONNECTION TO CIRCUIT SHOWN.
- 20 ICE MAKER RECEPTABLES SHALL BE CONCEALED UNDER THE ICE MAKER. COORDINATE LOCATION WITH ACTUAL WIDTH OF ICE MAKER.
- 21 PROVIDE VERTICAL METAL DIE CAST WEATHERPROOF WHILE IN USE OUTLET COVER ON RECEPTABLES AT COOK LINE. COVER SHALL BE INTERMATIC WP1010MXD FOR SINGLE GANG BOXES AND WP1030MXD FOR DOUBLE GANG BOXES. NO SUBSTITUTIONS SHALL BE ACCEPTED.
- 22 LABEL BATTERY-PROTECTED RECEPTABLES "BATTERY-PROTECTED- DISCONNECT AT PANEL BDP".
- 23 LABEL MAIN DISCONNECT SWITCH AND PANEL A "WARNING: BATTERY PROTECTED RECEPTABLES IN USE. DISCONNECT AT PANEL BDP."
- 24 PROVIDE TWO J-BOXES ALIGNED VERTICALLY ON WALL AS SHOWN FOR CONNECTION TO NIT POWER-HUB. CONNECT UPPER J-BOX TO CIRCUIT SHOWN FOR CONNECTION TO POWER-HUB. TERMINATE WIRING FOR DEVICES SHOWN TO BE CIRCUITED TO "BDP-1" WITHIN LOWER J-BOX FOR CONNECTION TO POWER-HUB.
- 25 CONNECT RESTROOM EXHAUST FAN TO CIRCUIT SHOWN THROUGH THE LIGHTING CONTROL PANEL (LCP).
- 26 INSTALL 16/2 SPEAKER WIRE FURNISHED BY MSS. INSTALL SPEAKER WIRE BETWEEN SPEAKERS IN THE DINING ROOM AS SHOWN TO THE VOLUME CONTROL IN THE KITCHEN WITH 3 FEET OF SLACK AT EACH END. SEE ARCHITECTURAL PLANS FOR SPEAKER LOCATIONS. ADJUST EACH SPEAKER 70V TAP SETTING TO BE 15 WATTS.

ELECTRICAL POWER PLAN NOTES

- 27 PROVIDE POWER CONNECTIONS TO ISLAND PREP TABLE PER DETAIL E7E10. PROVIDE GFCI DUPLEX RECEPTABLES IN TWO J-BOXES INTEGRAL TO PREP TABLE FOR HOT HOLDING CABINET AND GENERAL RECEPTACLE.
- 28 PROVIDE GFCI RECEPTACLE AND J-BOX AND INSTALL CO2 ALARM REMOTE DISPLAY UNIT FURNISHED BY COZAS AS SHOWN IN DETAIL 4/E710.
- 29 PROVIDE J-BOX AND INSTALL CO2 ALARM REMOTE DISPLAY UNIT FURNISHED BY COZAS AS SHOWN IN DETAIL 4/E710.
- 30 INSTALL WALK-IN-COOLER EXTERNAL READOUT THERMOMETER REMOTE PROBE ON WALL OPPOSITE FROM DOOR AS SHOWN. REMOVE TEMP/RATURI PROBE WIRE ABOVE WALK-IN COOLER CEILING PANELS. SEAL PENETRATIONS THROUGH THE CEILING PANELS, AND SECURE VERTICAL PROBE WIRE TIGHT TO WALLS. NO EXCESS PROBE WIRE SHALL BE WITHIN THE WALK-IN COOLER.
- 31 PROVIDE A J-BOX 6" BELOW THE LAY-IN CEILING WITH A 1/2" CONDUIT ROUTED TO THE HCP. PROVIDE 16 GA 3 CONDUCTOR LOW VOLTAGE WIRE FROM THE HOOD SUPPRESSION SYSTEM GAS VALVE BACK TO THE HCP WITH FINAL CONNECTION IN THE HCP BY THE INSTALLER. LOW VOLTAGE WIRING FROM THE J-BOX TO THE GAS VALVE SHALL BE CONCEALED WITH FLEXIBLE METAL CONDUIT OR LIQUIDTIGHT FLEXIBLE METAL CONDUIT. COORDINATE J-BOX LOCATION WITH GAS VALVE SO THAT CONDUIT IS 12" OR LESS.
- 32 PROVIDE 4" SQUARE J-BOX ON EXTERIOR WALL FOR MOUNTING OF EXTERIOR CAMERA. SEE ARCHITECTURAL ELEVATION FOR EXACT HEIGHT AND LOCATION. PROVIDE 3/4" CONDUIT WITH PULLSTRING FROM J-BOX TO ABOVE LAY-IN CEILING AREA IN KITCHEN. J-BOX SHALL NOT BE SURFACE MOUNTED. BASE OF CAMERA SHALL BE MOUNTED FLUSH TO EXTERIOR WALL FINISH.
- 33 PROVIDE 1" CONDUITS FROM LOW-VOLTAGE J-BOXES AT POS COUNTER CONCEALED WITHIN THE SERVE LINE WIRING CHASE TO THE WALL, THEN CONCEALED WITHIN THE WALL AND ABOVE THE CEILING TO ABOVE THE OFFICE CEILING.
- 34 PROVIDE A RECESSED J-BOX AT 56" AFF FOR THE INSTALLATION OF THE SECURITY SYSTEM KEYPAD WITH A 1/2" CONDUIT TO ABOVE THE LAY-IN CEILING. TERMINATE CONDUIT WITH A CONDUIT BUSHING.
- 35 INSTALL VEHICLE DETECTOR SYSTEM FURNISHED BY IES SURFACE-MOUNTED ON WALL IN ACCESSIBLE LOCATION ABOVE CEILING AND CONNECT TO STROBE/CHIME AND DETECTOR LOOP PER THE MANUFACTURER'S INSTALLATION INSTRUCTIONS. MAKE FINAL ADJUSTMENTS TO LOOP SENSITIVITY PER THE MANUFACTURER'S INSTRUCTIONS. ONCE ALL COMPONENTS ARE INSTALLED AND OPERATIONAL THE CHIME/STROBE LIGHT SHOULD STAY ILLUMINATED AND THERE SHOULD BE A SINGLE CHIME WHEN A VEHICLE DRIVES OVER OR STOPS ON LOOP.
- 36 SEAL INTERIOR AND EXTERIOR OF CONDUITS THAT PASS THROUGH THE WALK-IN COOLER FAN/FLAP PER THE NEC.
- 37 PROVIDE ISLAND PREP TABLE FOOD WARMER RECEPTACLE WITH GROUND PIN TOWARDS THE BOTTOM OF THE RECEPTACLE.
- 38 INSTALL TRANSFORMER FURNISHED BY EJV WITH THE REME HALO AIR PURIFIER IN THE JUNCTION BOX ON THE EXTERIOR OF THE RTU PER DETAIL G/M200. CONNECT LINE SIDE OF THE TRANSFORMER TO THE RTU SERVICE RECEPTACLE CIRCUIT SO THAT REME HALO RUNS CONTINUOUSLY. CONNECT THE LOW VOLTAGE SIDE OF THE TRANSFORMER TO THE REME HALO USING THE INCLUDED BARREL PLUG.
- 39 PROVIDE (2) 10"x10"x4" JUNCTION BOXES (1-BOX #1-J-BOX #2) ON THE WALL ABOVE PANELBOARDS 6" BELOW THE LAY-IN CEILING AND MOUNTED ADJACENT TO EACH. PROVIDE CONDUITS AND WIRING SHOWN IN DETAIL B/E710. ITEMS SHALL PROVIDE GROUNDING 3 PHASE, METER AND TRANSFORMER WITHIN J-BOX #1 AND GROUNDPOINT COMMON WITHIN J-BOX #2. SEE GROUNDPOINT INSTALLATION SHEET FOR DETAILS.
- 40 PROVIDE HORIZONTAL SINGLE-GANG J-BOX BELOW FUTURE GROUNDPOINT CONTROLLER LOCATION. PROVIDE CONDUITS AND WIRING AS SHOWN IN DETAIL E7E10.
- 41 INSTALL WIRED DOOR BUZZER AT 96" AFF. SEE ARCHITECTURAL DOOR EQUIPMENT FOR EQUIPMENT INFORMATION. CONNECT TO CIRCUIT SHOWN THROUGH THE TRANSFORMER FURNISHED WITH THE DOOR BUZZER. PROVIDE WIRING TO A BUTTON ADJACENT TO THE SERVICE DOOR AND CONNECT PER THE MANUFACTURER'S INSTALLATION INSTRUCTIONS.
- 42 CONNECT BATHROOM SANITIZER TO CIRCUIT SHOWN SO THAT IT IS ENERGIZED AT ALL TIMES.
- 43 PROVIDE POWER AND LOW VOLTAGE CONNECTIONS TO DISH SANITIZING MACHINE PER DETAIL 7/E710. CONNECT THE DETERGENT DISPENSER TO THE DISH MACHINE USING THE INCLUDED WIRING HARNESS PER THE MANUFACTURER'S INSTALLATION INSTRUCTIONS.
- 44 PROVIDE RECEPTACLE FOR 2-DOOR AND 1-DOOR REFRIGERATORS WITH GROUND PINS TOWARDS THE BOTTOM OF THE RECEPTACLE.
- 45 PROVIDE COPD AND NEMA 5-20P PULL FROM UTENSIL COUNTER ICE MAKER, THROUGH UTENSIL COUNTER, TO ICE MAKER RECEPTACLE.
- 46 LABEL UTENSIL COUNTER RECEPTABLES "TRACTOR REFRIG/MR", "ICE MAKER/JMSB", AND "SOIDA FOUNTAIN".
- 47 LABEL RECEPTACLE "UV INSECT TRAP".
- 48 PROVIDE POWER CONNECTIONS TO ISLAND PREP TABLE PER DETAIL E7E10. PROVIDE GFCI DUPLEX RECEPTABLE IN THE J-BOX INTEGRAL TO PREP TABLE FOR UNDERCOUNTER REFRIGERATOR. PROVIDE FINAL CONNECTION TO CARVING STATION HEATER. IF NEUTRAL CONDUCTOR IS NOT NEEDED FOR SERVE LINE HOT FOOD SERVER TERMINATE NEUTRAL IN JUNCTION BOX.
- 50 PROVIDE A TWO-CONDUCTOR LOW VOLTAGE WIRE IN 3/4" C. AND 14/1 #12, #12 IN #12 G. IN 1" C. FROM MAU-1 TO THE HOOD CONTROL PANEL PER THE MANUFACTURER'S INSTALLATION INSTRUCTIONS.
- 51 PROVIDE A HORIZONTAL SINGLE-GANG J-BOX FOR DATA JACK AS SHOWN FOR KRONOS TIME CLOCK.



POWER ROOF PLAN
1/8" = 1'-0"



POWER FLOOR PLAN
1/4" = 1'-0"

NATIONAL
4635 Trieman Blvd, Suite 250
Hilliard, Ohio 43026
Phone: (614) 751-9610
Fax: (614) 552-5240
Contact: Cliff Kagar
(614) 328-2024
ckgar@nationalengineering.com

FOR CONSTRUCTION

CHIPOTLE MEXICAN GRILL, INC.
2499 SOUTH STATE ROAD 46
SUITE#112, TERRE HAUTE, IN 47803

STORE NO.: 5517
TERRE HAUTE EAST
2499 SOUTH STATE ROAD 46
SUITE#112, TERRE HAUTE, IN 47803

Issue/Revision	Date	Description
01/07/2025	PERMIT SET	
01/29/2025	BD SET	
03/24/2025	CONSTRUCTION SET	

Revision	Date	Description
1	01/24/2025	0801 2025

Drawn: []
Checked: []
CRK []

Project No.: 2401136

ELECTRICAL POWER PLAN

E110

FOR CONSTRUCTION



STORE NO.: 5517
 TERRE HAUTE EAST
 2499 SOUTH STATE ROAD 46
 SUITE#112, TERRE HAUTE, IN 47803

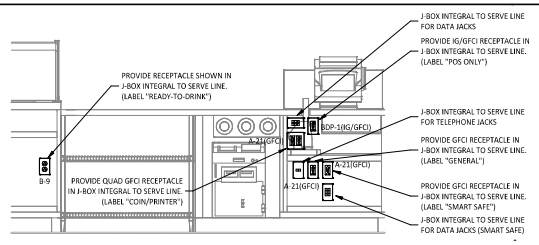
Issue/Revision	Date	Description
1	01/07/2025	PERMIT SET
2	01/22/2025	300 SET
3	03/24/2025	CONSTRUCTION SET
4	01/24/2025	0801 2025

Drawn: []
 Checkd: []
 CLK: []
 JEL: []

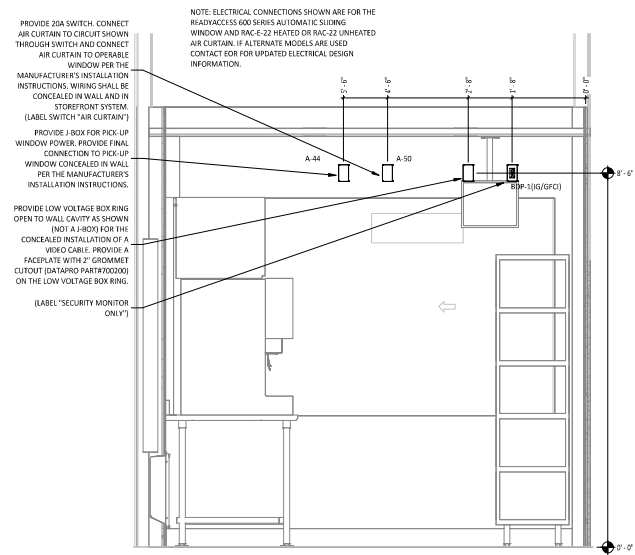
Project No.:
 2401130

ELECTRICAL INTERIOR ELEVATIONS

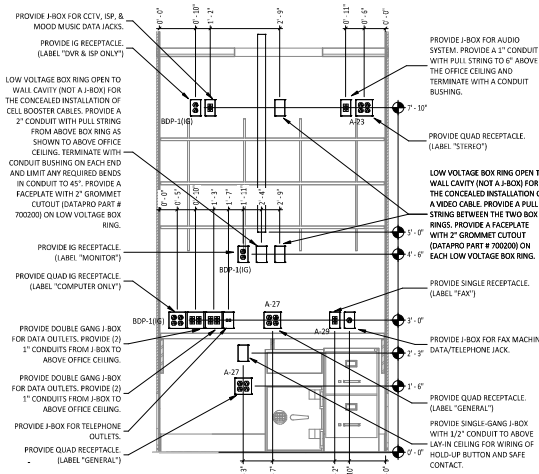
E700



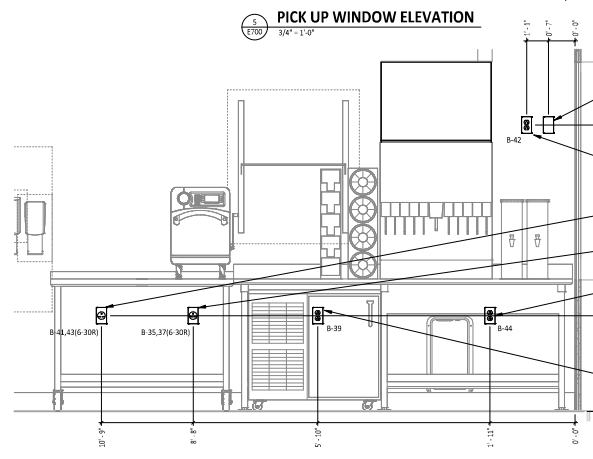
POS COUNTER ELECTRICAL ELEVATION
 3/4" = 1'-0"



OFFICE DOOR ELECTRICAL ELEVATION
 3/4" = 1'-0"

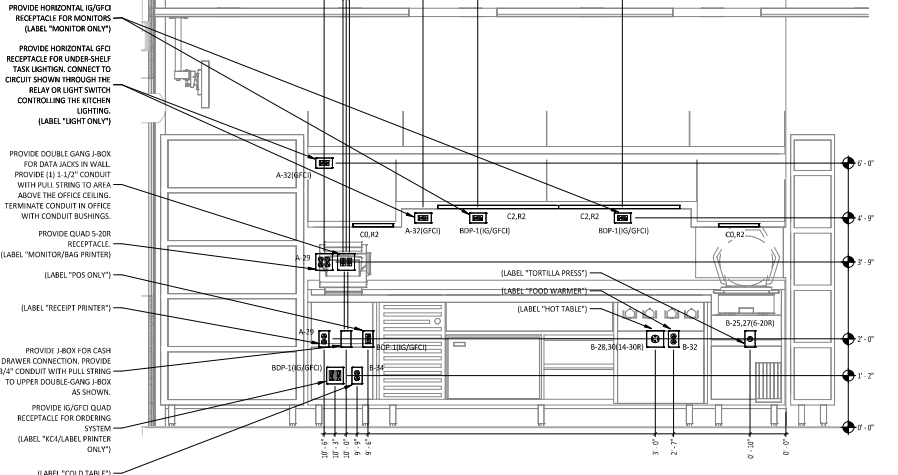


OFFICE DESK ELECTRICAL ELEVATION
 3/4" = 1'-0"



PICK UP WINDOW ELECTRICAL ELEVATION
 3/4" = 1'-0"

- PROVIDE NEMA 5-20P FLANGED INLET. WIRE TO REMOTE CONDENSER PER MANUFACTURER'S INSTALLATION INSTRUCTIONS. (LABEL "ICE MACHINE CONDENSER")
- FOR ICE MACHINE (LABEL "ICE MACHINE")
- FOR QUESADILLA MAKER. PROVIDE WITH GROUND PLUG AT TOP OF RECEPTACLE.
- FOR QUESADILLA MAKER. PROVIDE WITH GROUND PLUG AT TOP OF RECEPTACLE.
- FOR PICK-UP WINDOW SODA MACHINE (LABEL "SODA MACHINE")
- FOR UNDER-COUNTER COOLER (LABEL "UNDER-COUNTER COOLER")



PUW COLD SIDE ELECTRICAL ELEVATION
 3/4" = 1'-0"

DML ELECTRICAL ELEVATION
 3/4" = 1'-0"

- PROVIDE HORIZONTAL (G/GFC) RECEPTACLE FOR MONITORS (LABEL "MONITOR ONLY")
- PROVIDE HORIZONTAL GFCI RECEPTACLE FOR UNDER-SHELF TASK LIGHTING. CONNECT TO CIRCUIT SHOWN THROUGH THE RELAY OR LIGHT SWITCH CONTROLLING THE KITCHEN LIGHTING. (LABEL "LIGHT ONLY")
- PROVIDE DOUBLE GANG J-BOX FOR DATA JACKS IN WALL. PROVIDE (1) 1/2" CONDUIT WITH PULL STRING TO AREA ABOVE THE OFFICE CEILING. TERMINATE CONDUIT IN OFFICE WITH CONDUIT BUSHINGS.
- PROVIDE QUAD 5-20R RECEPTACLE (LABEL "MONITOR/BAG PRINTER") (LABEL "POS ONLY")
- (LABEL "RECEIPT PRINTER")
- PROVIDE J-BOX FOR CASH DRAWER CONNECTION. PROVIDE 1/2" CONDUIT WITH PULL STRING TO UPPER DOUBLE-GANG J-BOX AS SHOWN.
- PROVIDE (G/GFC) QUAD RECEPTACLE FOR ORDERING SYSTEM (LABEL "C/A LABEL PRINTER ONLY") (LABEL "COLD TABLE")

- NOTE: ELECTRICAL CONNECTIONS SHOWN ARE FOR THE READYACCESS 600 SERIES AUTOMATIC SLIDING WINDOW AND RAC-22 HEATED OR RAC-22 UNHEATED AIR CURTAIN. IF ALTERNATE MODELS ARE USED CONTACT FOR UPDATED ELECTRICAL DESIGN INFORMATION.
- PROVIDE 20A SWITCH, CONNECT AIR CURTAIN TO CIRCUIT SHOWN THROUGH SWITCH AND CONNECT AIR CURTAIN TO OPERABLE WINDOW PER THE MANUFACTURER'S INSTALLATION INSTRUCTIONS. WIRING SHALL BE CONCEALED IN WALL AND IN STOREFRONT SYSTEM. (LABEL SWITCH "AIR CURTAIN")
- PROVIDE J-BOX FOR PICK-UP WINDOW POWER. PROVIDE FINAL CONNECTION TO PICK-UP WINDOW CONCEALED IN WALL FOR THE MANUFACTURER'S INSTALLATION INSTRUCTIONS.
- PROVIDE LOW VOLTAGE BOX RING OPEN TO WALL CAVITY AS SHOWN (NOT A J-BOX FOR THE CONCEALED INSTALLATION OF A VIDEO CABLE. PROVIDE A FACPLATE WITH 2" GROMMET CUTOUT (DATAPRO PART #700200) ON THE LOW VOLTAGE BOX RING. (LABEL "SECURITY MONITOR ONLY")

- J-BOX INTEGRAL TO SERVE LINE FOR DATA JACKS
- PROVIDE (G/GFC) RECEPTACLE IN J-BOX INTEGRAL TO SERVE LINE. (LABEL "POS ONLY")
- J-BOX INTEGRAL TO SERVE LINE FOR TELEPHONE JACKS
- PROVIDE GFCI RECEPTACLE IN J-BOX INTEGRAL TO SERVE LINE. (LABEL "GENERAL")
- PROVIDE GFCI RECEPTACLE IN J-BOX INTEGRAL TO SERVE LINE FOR DATA JACKS (SMART SAFE)
- PROVIDE 24" X 18" PLYWOOD BACKBOARD ABOVE OFFICE CEILING FOR TELEPHONE 66 BLOCK
- PROVIDE DOUBLE GANG J-BOX WITH 1" CONDUIT IN WALL TO ABOVE OFFICE CEILING.
- PROVIDE DOUBLE GANG J-BOX WITH 1" CONDUIT IN WALL TO ABOVE OFFICE CEILING FOR T1 AND SECURITY JACKS.
- PROVIDE 24" X 18" PLYWOOD BACKBOARD ON SIDE WALL ON TOP OF FRP PAINT BACKBOARD WHITE. COORDINATE WITH PHONE COMPANY FOR T1 ROUTER TO BE INSTALLED ON BACKBOARD.
- PROVIDE (G) RECEPTACLE (LABEL "SECURITY SYSTEM ONLY")
- PROVIDE 24" X 18" PLYWOOD BACKBOARD ON WALL ABOVE DOOR ON TOP OF FRP PAINT BACKBOARD WHITE. COORDINATE WITH ALARM SYSTEM INSTALLER FOR SECURITY SYSTEM CONTROL PANEL. TO BE INSTALLED ON BACKBOARD.
- DEEP OCTAGON J-BOX FOR LAUNCHPORT. SEE E110 FOR MORE INFORMATION.
- VERTICAL J-BOX FOR THERMOSTATS. SEE W100 FOR MORE INFORMATION.
- HORIZONTAL J-BOX FOR GRIDPOINT. SEE E110 FOR MORE INFORMATION.

- PROVIDE J-BOX FOR CCTV, ISP, & MOOD MUSIC DATA JACKS.
- PROVIDE (G) RECEPTACLE (LABEL "DVR & ISP ONLY")
- LOW VOLTAGE BOX RING OPEN TO WALL CAVITY (NOT A J-BOX FOR THE CONCEALED INSTALLATION OF CELL BOOSTER CABLES. PROVIDE A 2" CONDUIT WITH PULL STRING FROM ABOVE BOX RING AS SHOWN TO ABOVE OFFICE CEILING. TERMINATE WITH CONDUIT BUSHING ON EACH END AND LIMIT ANY REQUIRED BENDS IN CONDUIT TO 45°. PROVIDE A FACPLATE WITH 2" GROMMET CUTOUT (DATAPRO PART # 700200) ON LOW VOLTAGE BOX RING.
- PROVIDE (G) RECEPTACLE (LABEL "MONITOR")
- PROVIDE QUAD (G) RECEPTACLE (LABEL "COMPUTER ONLY")
- PROVIDE DOUBLE GANG J-BOX FOR DATA OUTLETS. PROVIDE (2) 1" CONDUITS FROM J-BOX TO ABOVE OFFICE CEILING.
- PROVIDE DOUBLE GANG J-BOX FOR DATA OUTLETS. PROVIDE (2) 1" CONDUITS FROM J-BOX TO ABOVE OFFICE CEILING.
- PROVIDE J-BOX FOR FAX MACHINE DATA/TELEPHONE JACK.
- PROVIDE QUAD RECEPTACLE (LABEL "GENERAL")
- PROVIDE SINGLE GANG J-BOX WITH 1/2" CONDUIT TO ABOVE LAY-IN CEILING FOR WIRING OF HOLD-UP BUTTON AND SAFE CONTACT.
- PROVIDE J-BOX FOR AUDIO SYSTEM. PROVIDE 1/2" CONDUIT WITH PULL STRING TO 6" ABOVE THE OFFICE CEILING AND TERMINATE WITH A CONDUIT BUSHING.
- PROVIDE QUAD RECEPTACLE (LABEL "STUDIO")
- LOW VOLTAGE BOX RING OPEN TO WALL CAVITY (NOT A J-BOX FOR THE CONCEALED INSTALLATION OF A VIDEO CABLE. PROVIDE A PULL STRING BETWEEN THE TWO BOX RINGS. PROVIDE A FACPLATE WITH 2" GROMMET CUTOUT (DATAPRO PART # 700200) ON EACH LOW VOLTAGE BOX RING.
- PROVIDE SINGLE RECEPTACLE (LABEL "FAX")