

**EXISTING COMPRESSOR MECHANICAL PLAN**  
1/8" = 1'-0"

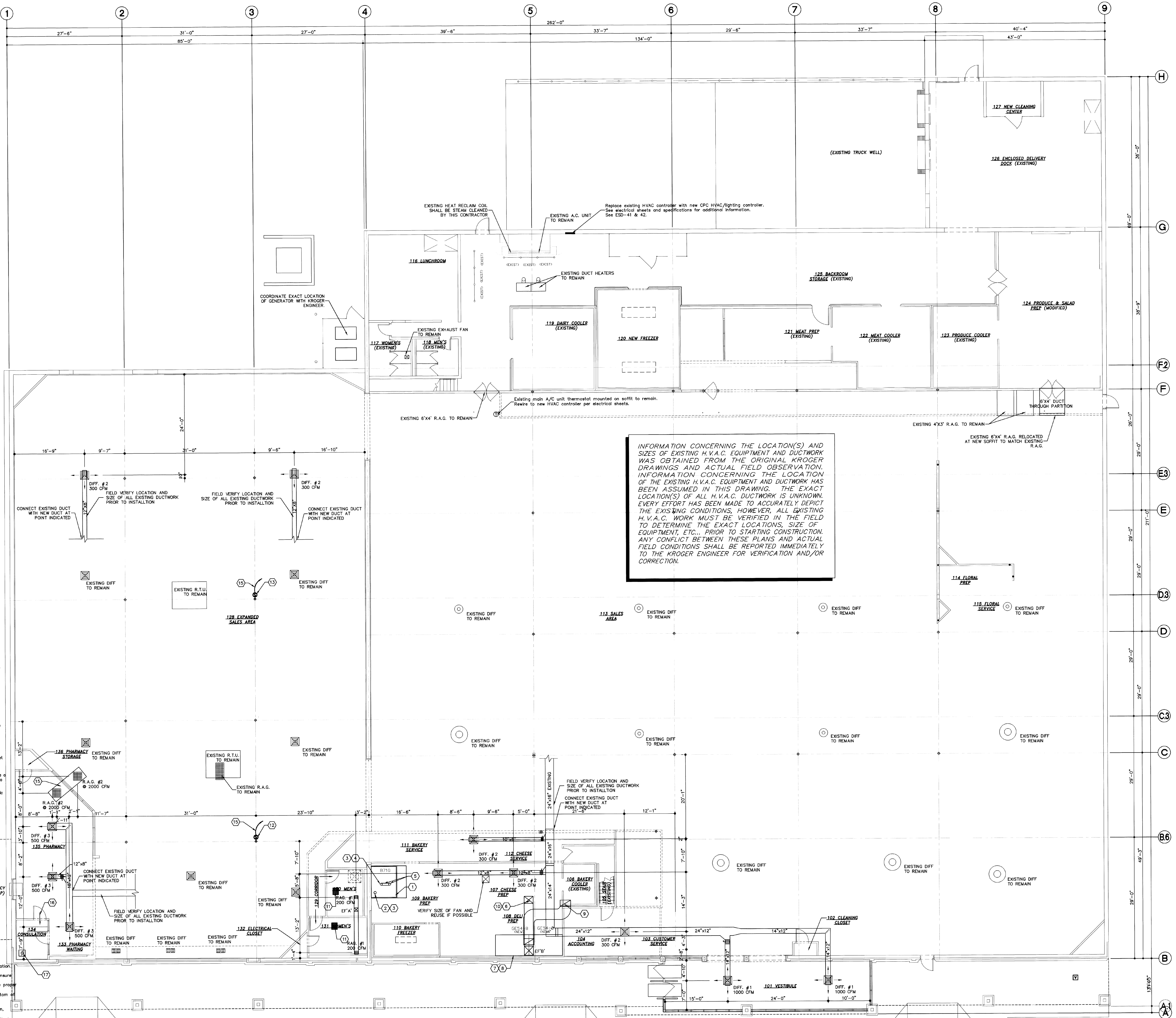
**EXISTING ELEVATED OFFICES MECHANICAL PLAN**  
1/8" = 1'-0"

**HEX KEY NOTES**

- 1) Provide a valved gas line for rock oven (300,000 BTU input). Coordinate location of valve, in field with Kroger. (3-8 oz./sq.in.)
- 2) Contractor shall furnish and install a 7" x 8" galvanized outer casing with aluminum inner pipe such as "Metal Brest" and capped with type "L" Braclert Air-X-Hausers at rock oven. Coordinate exact location with oven supplier.
- 3) Contractor to make final connection to bakery oven's exhaust and vent. Provide and install pipe through the roof to cap.
- 4) Contractor shall furnish and install a 5" x 6" galvanized outer casing with aluminum inner pipe such as "Metal Brest" and capped with type "L" Braclert Air-X-Hausers at rock oven. Coordinate exact location with oven supplier.
- 5) Duct Inducer (Coordinate with oven supplier for exact location)
- 6) Install 28"x28" duct up to opening thru roof capped with 18"x5" Dell Hood Exhaust Fan "E". See fan schedule on sheet M102 for additional information.
- 7) Stainless steel walkway from hood to floor.
- 8) HVAC Contractor to provide a ported stainless steel skirt to match exhaust hood.
- 9) 30"x18" Duct up to opening thru roof capped with make-up air fan. See Fan Schedule on sheet M102 for additional information.
- 10) The exhaust fan above should be aligned horizontally as close as possible with the hood to eliminate any unnecessary bends or corners in the duct. If an offset is required, it shall not be a 90 degree angle but a gradual transition from top of hood to the roof curb. This is required to facilitate cleaning of the duct.
- 11) Ceiling mounted electric heater furnished and installed by Electrical Contractor. See Floor Electric plan and Specifications for additional information.
- 12) Mount temperature and humidity sensors on column as indicated on electrical sheets. See ESD-41.
- 13) Mount temperature sensor on column as indicated on electrical sheets. See ESD-41.
- 14) See electrical drawings and ESD-441 for low voltage control wiring from existing rooftop unit to new CPC HVAC controller.
- 15) 24"x24" return air grille for pharmacy relief. See Specifications.
- 16) Arrow indicates air flow thru louvered door.
- 17) Ceiling Ventilator to attic space capped with exhaust Fan "C". See fan schedule on sheet M102 for additional information.

**GENERAL NOTES**

- 1 See Section 15A-HVAC and General Conditions in Specifications for additional information. See Sheet M102 for schedules and additional information.
- 2 Coordinate electrical requirements of HVAC Equipment with Electrical Contractor to insure proper installation of equipment.
- 3 HVAC Contractor, Roofing Contractor and Steel Contractor shall coordinate to insure proper size, location and placement of openings thru roof for HVAC equipment.
- 4 HVAC Contractor shall verify clearances between top of cooler/freezer, etc. and bottom nearest obstruction prior to fabrication of duct.
- 5 All exhaust fans shall be installed level, weather resistant and all gas fired equipment (i.e. oven, generator, water heater, etc.), including equipment furnished by others.
- 6 Supply prefabricated curbs on all openings larger than 12" square (see ASD-78). Steel fabricator to supply burglar bars.
- 7 All duct dimensions shown on plan are for interior clear opening sizes.
- 8 All dimensions shown on plan for diffusers located in suspended ceiling are approximate and may be adjusted in field as required to match actual placement of suspended ceiling.
- 9 HVAC Contractor shall verify clearances with Steel Contractor prior to fabrication of ductwork.
- 10 No mechanical piping or ductwork shall be installed prior to coordination with Kroger Engineer and Refrigeration Contractor. Some adjustments to duct height may be necessary to avoid conflict with refrigeration lines.
- 11 Use flex duct to make the final connection from the rectangular rigid duct to the diffuser. Limit length of flex duct to 8'.
- 12 Contractors shall schedule and perform all work so as to minimize disturbances to continued store operation.
- 13 General Contractor shall be responsible for patching areas of floors, walls ceilings, roof, etc. after removal of existing mechanical equipment.
- 14 All existing HVAC equipment (A/C units, duct work, diffusers, exhaust fans, etc.) are to remain "as-is" unless specifically noted otherwise.
- 15 Clean all existing registers, diffusers and return air grilles to remain.
- 16 Individual Subcontractors are responsible for removing and re-installing fixtures, equipment, etc. that normally fall within their trades, as required to install new room finishes (floors, walls, etc.) in areas where fixtures, equipment, etc. are shown to remain.
- 17 See Phasing Plans and Phasing Schedule, Sheet PH10 for exact phasing of demolition and new construction. Coordinate phasing with Kroger Engineer.



INFORMATION CONCERNING THE LOCATION(S) AND SIZES OF EXISTING H.V.A.C. EQUIPMENT AND DUCTWORK WAS OBTAINED FROM THE ORIGINAL KROGER DRAWINGS AND ACTUAL FIELD OBSERVATION. INFORMATION CONCERNING THE LOCATION OF THE EXISTING H.V.A.C. EQUIPMENT AND DUCTWORK HAS BEEN ASSUMED IN THIS DRAWING. THE EXACT LOCATION(S) OF ALL H.V.A.C. DUCTWORK IS UNKNOWN. EVERY EFFORT HAS BEEN MADE TO ACCURATELY DEPICT THE EXISTING CONDITIONS, HOWEVER, ALL EXISTING H.V.A.C. WORK MUST BE VERIFIED IN THE FIELD TO DETERMINE THE EXACT LOCATIONS, SIZE OF EQUIPMENT, ETC., PRIOR TO STARTING CONSTRUCTION. ANY CONFLICT BETWEEN THESE PLANS AND ACTUAL FIELD CONDITIONS SHALL BE REPORTED IMMEDIATELY TO THE KROGER ENGINEER FOR VERIFICATION AND/OR CORRECTION.

**MECHANICAL PLAN**  
1/8" = 1'-0"

GENERAL CONTRACTOR IS RESPONSIBLE FOR VERIFYING SITE AND LOCATION OF EXISTING DUCT AND EQUIPMENT BEFORE CONSTRUCTION

**H.V.A.C. SYMBOL LEGEND**


Remodel / Expansion  
**Kroger Store L-292**  
Terry Lane and Greenwood Road  
Louisville, Kentucky

PROJECT NUMBER: 97028  
SCALE: 1/8" = 1'-0"  
MECHANICAL PLAN

DATE: 10/22/97  
11/3/97

Revisions/Submittals:  
Permit Issue set  
Bid Issue set

DPH DRAWN BY:  
RJS CHECKED BY:

SCHULTZ DESIGN  
MISSOURI, INC.  
1038 SOUTH DUCHESNE  
ST. CHARLES, MO 63301-4636  
(314) 949-2900

M101