



BID DOCUMENTS ONLY NOT FOR CONSTRUCTION

CONTROL FUNCTIONS

- THE MAIN CONTROL POINT FOR THE ENTIRE AIR UNIT SHALL BE PROVIDED TO OPERATE USING THE CONTROL PANEL AS SHOWN BY A W/OF AND INCLUDES A BIP PROTECTION OVERRIDE.
- THE TEMPERATURE CONTROL IS CONTROLLED BY THE THERMOSTAT SENSORS CONTROLLED TO THE THERMOSTAT LOCATED IN THE OFFICE. ALL ZONES SHALL OPERATE IN THE CONTROLLED MODE UNLESS OTHERWISE INDICATED AND NOT TO EXCEED THE THERMOSTAT SETPOINT.
- THE THERMOSTAT SHALL DETERMINE OCCUPIED/UNOCCUPIED STATUS BASED ON THE SCHEDULE IN THE ENERGY MANAGEMENT SYSTEM.

TAG	SUPPLY FLOW	RETURN FLOW	EXHAUST FLOW	SUBTOTAL
E-1	0.0 CFM	0.0 CFM	2,550 CFM	2,550 CFM
F1-1	0.0 CFM	0.0 CFM	150 CFM	150 CFM
F1-2	0.0 CFM	0.0 CFM	0.0 CFM	0.0 CFM
F1-3	1,500 CFM	1,000 CFM	0.0 CFM	2,500 CFM
F1-4	0.0 CFM	0.0 CFM	0.0 CFM	0.0 CFM
F1-5	0.0 CFM	0.0 CFM	0.0 CFM	0.0 CFM

TAG	COUNT	DESCRIPTION	FURNISHED BY	INSTALLED BY	MANUFACTURER	MODEL	REMARKS
SP-1	2	BATHROOM AIR PURIFICATION UNIT	TRV	GC	TRT ENVIRONMENTAL GROUP	SPU-ASSEMBLY	SEE ELECTRICAL SHEETS FOR CONNECTION INFORMATION
SP-2	2	MECH AIR PURIFICATION UNIT	TRV	GC	TRT ENVIRONMENTAL GROUP	SPU-MECH	SEE DETAIL ON/AS FOR INSTALLATION INFORMATION
SP-3	3	ICE MACHINE TREATMENT SYSTEM	TRV	GC	TRT ENVIRONMENTAL GROUP	SPU-ICE-M	SEE PLUMBING DRAWINGS FOR INSTALLATION INFORMATION

TAG	DESCRIPTION	AIRFLOW	E.S.P.	WEIGHT	MOTOR POWER	V/77M	FURNISHED BY	INSTALLED BY	MANUFACTURER	MODEL	REMARKS
F1-1	UPRAISE MECH ROOM FAN	2,500 CFM	1.0 IN WG	400 LB	7.0 HP	290/3/50	HS	GC	CAPTIVE AIRE	DR200A	DIRECT DRIVE VFD SPEED CONTROL FAN BLUNDS W/ED WITH WEATHERPROOF DISCONNECT AND W/RETRIEVABLE COIL
F1-2	DOWNRAISE RESTROOM EXHAUST FAN	250 CFM	0.60 IN WG	100 LB	0.18 HP	100/1/50	HS	GC	CAPTIVE AIRE	DR200A	DIRECT DRIVE DOWNRAISE RESTROOM EXHAUST FAN BLUNDS W/ED WITH WEATHERPROOF DISCONNECT SPEED CONTROL, BACKSWITCH DAMPER, AND COILS

TAG	DESCRIPTION	FACE SIZE	MATERIAL	FINISH	AMOUNTING	FURNISHED BY	INSTALLED BY	MANUFACTURER	MODEL	NOTES
T01	PERFORATED CEILING DIFFUSER	12' X 12'	ALUMINUM	WHITE	SAF-FEELING	GC	GC	INBORN	4330A TYPE1	PROVIDE W/1" PERFORATION
C01	PERFORATED CEILING DIFFUSER	12' X 12'	ALUMINUM	WHITE	SURFACE MOUNT	GC	GC	INBORN	4330A TYPE1	PROVIDE W/1" PERFORATION
F01	PERFORATED CEILING DIFFUSER	12' X 12'	ALUMINUM	WHITE	SURFACE MOUNT	GC	GC	INBORN	4330A TYPE1	PROVIDE W/1" PERFORATION
R01	PERFORATED CEILING DIFFUSER	12' X 12'	ALUMINUM	WHITE	SAF-FEELING	GC	GC	INBORN	4330A TYPE1	PROVIDE W/1" PERFORATION
R02	PERFORATED CEILING DIFFUSER	12' X 12'	ALUMINUM	WHITE	SURFACE MOUNT	GC	GC	INBORN	4330A TYPE1	PROVIDE W/1" PERFORATION
S01	ADJUSTABLE TURBO RETURN	12" DIA	ALUMINUM	WHITE	WALL	GC	GC	ART CONCEPTS	AMA-18	PROVIDE W/1" CONCRETE MOUNTING AND AIR FILTERING
S02	ADJUSTABLE TURBO RETURN	12" DIA	ALUMINUM	WHITE	WALL	GC	GC	INBORN	S02H	PROVIDE W/1" PERFORATION

TAG	COUNT	DESCRIPTION	DUCT CONNECTION SIZE	FAN	FURNISHED BY	INSTALLED BY	MANUFACTURER	MODEL	REMARKS
V0-1	1	VIROGUARD CONDENSATE FAN	12" X 12"	CAPTIVE AIRE DR200A	HS	GC	DOWNSTATE		

TAG	DESCRIPTION	NOMINAL CAPACITY	NUMBER OF COMPRESSORS	REFRIGERANT	WEIGHT	MDP	E.L.A.	V/77M	FURNISHED BY	INSTALLED BY	MANUFACTURER	MODEL	REMARKS
C0-1	CONDENSING UNIT - WALL IN CEILING	10	2	R-404A	104 LB	100	15A	200/3/50	HS	GC	HOISHIMA	UIC-9000-35	FURNISHED WITH WALL IN CEILING
C0-2	CONDENSING UNIT - LOW CAPACITY ICE MAKER	0	1	R-404A	11.8 LB	100	15A	100/2/50	HS	GC	HOISHIMA	UIC-912	FURNISHED WITH ICE MAKER
C0-3	CONDENSING UNIT - MEDIUM CAPACITY ICE MAKER	0	1	R-404A	5.8 LB	100	15A	100/2/50	HS	GC	HOISHIMA	UIC-912	FURNISHED WITH ICE MAKER

TAG	DESCRIPTION	AIRFLOW	E.S.P.	INPUT	OUTPUT	WEIGHT	MOTOR POWER	V/77M	FURNISHED BY	INSTALLED BY	MANUFACTURER	MODEL	REMARKS	
MAU-1	DIRECT FIRE MAKEUP AIR UNIT	1,300 CFM	0.50 IN WG	253,000 BTU/H	220,000 BTU/H	21.7	630 LB	1.7 HP	290/3/50	HS	GC	CAPTIVE AIRE	AL-D-250-150	12.5.1 MAKEUP AIR UNIT - FURNISHED WITH DISCONNECT, ROOF CURB, SOOT FILTER, W/ED, AND ACCESS DOOR ON UNIT

TAG	DESCRIPTION	MAX COOKING DEMAND	AIRFLOW	E.S.P.	NO.	WIDTH	LENGTH	DEPTH	HEIGHT	WEIGHT	FURNISHED BY	INSTALLED BY	MANUFACTURER	MODEL	REMARKS										
H-1	TYPICAL HOOD WITH PERFORATED MAKEUP AIR SUPPLY PLenums	600 F	2,500 CFM	0.97 IN WG	1	30"	2'-0"	12'-9"	4'-3"	13'-9"	1'-7"	1,300 CFM	3	8"	2'-4"	700 CFM	6	8"	8	1,550 LB	HS	GC	CAPTIVE AIRE	S24-N02-40DPR	W/12" IS GLASS TYPE 433 SS. FURNISHED WITH VERTICAL END PANEL VAPORPROOF PACKAGING. SMOKE FILTERS, W/ED, AND AIR FILTERS. CEILING, WALL, ISOLATED, TOOL LESS HINGED ACCESS PANELS, DISCONNECT, & UNIT MOUNTED COMPANIES ACCESSIBLE. FURNISHED WITH COMP. EXHAUST FAN, BACKFLOW PREVENTER, ROOF SMOKE DETECTOR W/ REMOTE BIPOLAR W/STOP, M.O.D., AIR FILTER, CURT, WALL ISOLATED, TOOL LESS HINGED ACCESS PANELS, DISCONNECT, & UNIT MOUNTED COMPANIES ACCESSIBLE. FURNISHED WITH COMP. EXHAUST FAN, BACKFLOW PREVENTER, ROOF SMOKE DETECTOR W/ REMOTE BIPOLAR W/STOP, M.O.D., AIR FILTER, CURT, WALL ISOLATED, TOOL LESS HINGED ACCESS PANELS, DISCONNECT, & UNIT MOUNTED COMPANIES ACCESSIBLE.

TAG	DESCRIPTION	NOMINAL CAPACITY	AIRFLOW	E.S.P.	TOTAL SENSIBLE	CONDENSATE	CONDENSATE	HEATING CAPACITY	NUMBER OF COMPRESSORS	REFRIGERANT	WEIGHT	MDP	E.L.A.	V/77M	FURNISHED BY	INSTALLED BY	MANUFACTURER	MODEL	REMARKS								
RU-1	KITCHEN ROOFTOP UNIT	120 TON	11	3,600 CFM	100,000 BTU/H	600 IN WG	150 GAL/H	77 Btu/h	76.1	89.7	95.1	100,000 BTU/H	184,000 BTU/H	50.7	2	2	R-410A	35.8 LB	1,510 LB	30A	445A	200,100	965	GC	TRV	2020	FURNISHED WITH COMP. EXHAUST FAN, BACKFLOW PREVENTER, ROOF SMOKE DETECTOR W/ REMOTE BIPOLAR W/STOP, M.O.D., AIR FILTER, CURT, WALL ISOLATED, TOOL LESS HINGED ACCESS PANELS, DISCONNECT, & UNIT MOUNTED COMPANIES ACCESSIBLE.
RU-2	MECH ROOM ROOFTOP UNIT	120 TON	11	4,000 CFM	1,000,000 BTU/H	600 IN WG	150 GAL/H	77 Btu/h	77.9	89.7	95.1	100,000 BTU/H	184,000 BTU/H	50.7	2	2	R-410A	35.8 LB	1,510 LB	30A	445A	200,100	965	GC	TRV	2020	FURNISHED WITH COMP. EXHAUST FAN, BACKFLOW PREVENTER, ROOF SMOKE DETECTOR W/ REMOTE BIPOLAR W/STOP, M.O.D., AIR FILTER, CURT, WALL ISOLATED, TOOL LESS HINGED ACCESS PANELS, DISCONNECT, & UNIT MOUNTED COMPANIES ACCESSIBLE.



CHIPOTLE MEXICAN GRILL, INC.
 5044 E DUPONT ROAD
 FORT WAYNE, IN 46825

STORE NO.: 5158
 DUPONT & TONKEL
 5044 E DUPONT ROAD
 FORT WAYNE, IN 46825

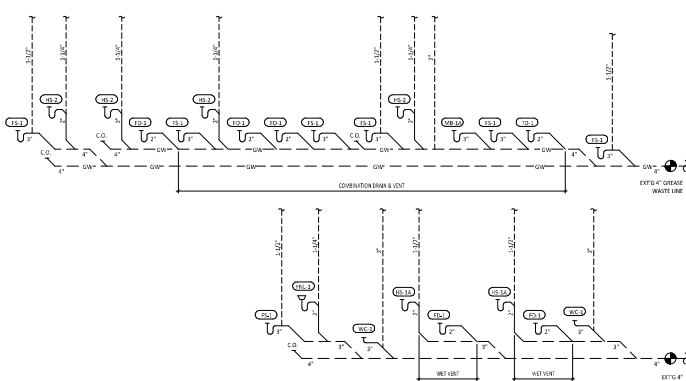
HVAC SCHEDULES
M600

PLUMBING WASTE AND VENT PLAN NOTES

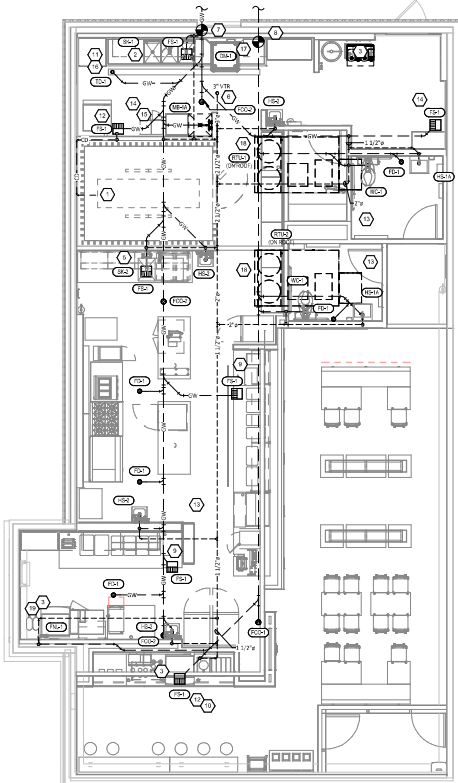
1. PROVIDE 1/2" CONDENSATE DRAIN FROM THE WALK-IN COOLER EVAPORATOR TO THE FLOOR SINK BELOW AS SHOWN. SLOPE CONDENSATE DRAIN A MINIMUM OF 1/8" PER FOOT. HOLD EXPOSED CONDENSATE DRAIN IN WALL IN COOLERS AS HIGH AS POSSIBLE. CONDENSATE DRAIN TYPING WITHIN FRAMED WALLS AS SHOWN. DISCHARGE THROUGH AN AIR GAP. MAKE FINAL CONNECTION TO WASTEWATER VENTILATION WALK-IN COOLER. PROVIDE A UNION. CONDENSATE DRAIN SHOULD PREVENTS WALL AT POINT OF BRIDGING AT 2" AFF.
2. PROVIDE DRAIN CONNECTION TO THE THREE COMPARTMENT SINK PER DETAIL 3.0700.
3. COORDINATE ROUTING OF SODA BUNDLES WITH COCA-COLA TECHNICIAN FROM BAG IN-BODY AREA TO EACH SODA DISPENSER. CREEPER THAN WITHIN THE WALL DOWN TO THE DRAIN. THE SODA BUNDLES SHALL BE ROUTED OVERHEAD WITHOUT CONDUIT. COORDINATE SUPPORT AND ROUTING OF THE SODA BUNDLES WITH COCA-COLA TECHNICIAN. VERIFY ROUTING IS AS NECESSARY. SUPPORTS. SEE ARCHITECTURAL DIMENSIONS FOR SODA BUNDLE TERMINATION LOCATION AND PROVIDE TERMINATION PER DETAIL 3.23700.
4. NOT USED.
5. PROVIDE DRAIN LINES FROM THE FOOD PREP SINK TO THE FLOOR SINK. PROVIDE AN AIR GAP AT THE DISCHARGE TO THE FLOOR SINK.
6. PROVIDE A 2" VENT THROUGH THE ROOF PER DETAIL 3.0700.
7. CONNECT TO EXISTING 4" GREASE TRAP LINE LEADING TO EXISTING DEDICATED 1200 GALLON GREASE INTERCEPTOR. SEE CIVIL FOR LOCATION.
8. CONNECT TO EXISTING 4" GREASE TRAP LINE IN LOCATION SHOWN.
9. PROVIDE 3/4" VALVED DRAIN FROM HOT FOOD TABLE TO THE FLOOR SINK. DRAIN THROUGH AN AIR GAP.
10. PROVIDE REGULATED COPPER DRAIN LINES FROM THE TEA TRAY DRAIN AND THE SODA MASHING MACHINE TO THE FLOOR SINK. DRAIN THROUGH AN AIR GAP. HOLD TEA TRAY DRAIN AS HIGH AS POSSIBLE AND SECURE TO STRUCTURE BELOW THE EXISTING COUNTER.
11. FROM TRENCH DRAIN LEAD PER THE MANUFACTURER'S INSTALLATION INSTRUCTIONS AND TO ROTATION FOR THIS DRAIN TO BE WITHIN 180 DEGREES. REVERSE TRENCH DRAIN WITH SLOPE FROM THE SLOPE TOWARD THE DRAIN CONNECTION TO AVOID STANDING WATER IN TRENCH DRAIN.
12. PROVIDE PVC CLEANOUT FROM THE ICE MACHINE TO THE FLOOR SINK PER THE MANUFACTURER'S INSTALLATION INSTRUCTIONS. PROVIDE A CODE-APPROVED AIR GAP AT THE DISCHARGE TO THE FLOOR SINK. SECURE ICE MAKER DRAIN PIPES TO THE BOTTOM OF THE ICE MAKER.
13. DO NOT PROVIDE WALL CLEANOUTS ON TILE OR PUBLICLY VISIBLE WALLS. IF A WALL CLEANOUT IS REQUIRED ON THESE SURFACES LOCATIONS TO BE IDENTIFIED WITH CHIPLETS CONSTRUCTION MANAGER.
14. PROVIDE SURFACE WASTE AND CONDENSATE DRAINS FROM FIXTURES OTHER THAN KITCHEN SINKS CONCEALED IN THE WALL AS SHOWN IN DETAIL 3.0700.
15. PROVIDE DRAIN FROM WATER FILTER TRAY TO FLOOR SINK CONCEALED IN THE WALL AS SHOWN IN DETAIL 3.0700.
16. PROVIDE TRENCH DRAIN AS SHOWN IN DETAIL 3.0700.
17. PROVIDE TRENCH DRAIN (FURNISHED WITH SINK MACHINE FROM DRAIN MACHINE) DRAIN TO FLOOR SINK. HOLD DRAIN HOSE TIGHT TO WALL AND SECURE TO A COMP SINK DRAIN TO MAINTAIN AN AIR GAP AT THE FLOOR SINK.
18. PROVIDE CONDENSATE TRAP ON FLOOR PER DETAIL 3.0700.
19. SEE DETAIL 3.0700 FOR DRAINS FROM TEA TRAY, ICE MAKER, AND SODA MACHINE TO TRENCH DRAIN.

PLUMBING FIXTURE WASTE CONNECTIONS

TAG	DESCRIPTION	CONNECTOR SIZE	WASTE	DRN	COUNT	TOTAL DRN
DM-5	REFrigerator Machine Drainage to SINK	3/4"	W	1	1	1
FD-3	FLOOR CLEANOUT (F)	2"	0	1	0	0
FD-2	FLOOR CLEANOUT (F)	2"	0	1	0	0
FD-1	FLOOR DRAIN	2"	2	5	10	10
FD-0	FLOOR DRAIN	2"	2	1	2	2
FD-1	FLOOR SINK	2"	1	7	16	16
SI-1	ICE MASHING INTERCEPTOR	2"	0	1	0	0
SI-2	ICE MASHING DRAIN	2"	1	2	2	2
SI-2	KITCHEN HAND SINK	2"	1	4	4	4
SI-1	ICE COMPARTMENT SINK	2"	0	1	0	0
SI-2	PREP SINK	2"	0	1	0	0
SI-1	TRENCH DRAIN	2"	2	1	2	2
WC-1	TOILET CLOSET	3"	4	2	8	8
GRAND TOTAL:						73



SANITARY WASTE & VENT DIAGRAM



SANITARY WASTE & VENT PLAN

NATIONAL
 4035 Trumbull Blvd. Suite 250
 Hilliard, Ohio 43026
 Phone: (614) 751-6810
 Fax: (614) 582-5240
 Contact: Cliff Kiger
 (614) 538-0233
 ckiger@nationalengineering.com

BID DOCUMENTS ONLY NOT FOR CONSTRUCTION

CHIPOTLE MEXICAN GRILL

CHIPLETS CONSTRUCTION CO., INC.
 PROJECT MANAGER
 5044 E DUPONT ROAD
 FORT WAYNE, IN 46825

STORE NO.: 5158
 DUPONT & TONKEL
 5044 E DUPONT ROAD
 FORT WAYNE, IN 46825

DATE: 08/20/2013
 DRAWN BY: JMM
 CHECKED BY: JMM
 PROJECT: 2301225
 SHEET: PLUMBING WASTE & VENT
 P110

SECTION 16010 - TELEVISION & PERMANENT ELECTRICAL SERVICE

- 1.1 GENERAL
1.2 SECTION REQUIREMENTS
1.3 MATERIALS
1.4 EXECUTION
1.5 MAINTENANCE

SECTION 16010 - PERMANENT ELECTRICAL SERVICE

- 1.1 GENERAL
1.2 SECTION REQUIREMENTS
1.3 MATERIALS
1.4 EXECUTION
1.5 MAINTENANCE

SECTION 16010 - PERMANENT ELECTRICAL SERVICE

- 1.1 GENERAL
1.2 SECTION REQUIREMENTS
1.3 MATERIALS
1.4 EXECUTION
1.5 MAINTENANCE

ELECTRICAL MATERIAL SCHEDULE

Table with columns: CONDUCTORS, APPLICATION, ALLOWABLE MATERIAL, STANDARD CODE, TYPE, THREAT, WIRE OR CABLE, MANUFACTURER, COMMENTS.

ELECTRICAL ABBREVIATIONS

Table with columns: SYMBOL, DESCRIPTION, SYMBOL, DESCRIPTION.

ELECTRICAL GENERAL NOTES

- A. GENERAL NOTES APPLY TO ALL ELECTRICAL SHEETS.
B. ELECTRICAL WORK SHALL BE DONE IN ACCORDANCE WITH THE ELECTRICAL CODE AND IN ACCORDANCE WITH THE APPROVED REVISED EDITION.
C. ALL ELECTRICAL WORK SHALL BE DONE IN ACCORDANCE WITH THE APPROVED REVISED EDITION.
D. ALL ELECTRICAL WORK SHALL BE DONE IN ACCORDANCE WITH THE APPROVED REVISED EDITION.

ELECTRICAL SYMBOLS

- CONDUCTOR CONTAINED ABOVE THE CEILING IN A WALL OR IN A PANELED AREA.
CONDUCTOR CONTAINED BELOW THE SUB-FLOOR.
DOWN-SHAFT TO PANELED CLOSET AND CLOSET NUMBER SHOWN.
PLANE NOTE: SET IN PLAN NOTES LISTED ON THE SAME SHEET FOR NOTE REVISIONS.

SECTION 16010 - TELEVISION & PERMANENT ELECTRICAL SERVICE

- 1.1 GENERAL
1.2 SECTION REQUIREMENTS
1.3 MATERIALS
1.4 EXECUTION
1.5 MAINTENANCE

SECTION 16010 - PERMANENT ELECTRICAL SERVICE

- 1.1 GENERAL
1.2 SECTION REQUIREMENTS
1.3 MATERIALS
1.4 EXECUTION
1.5 MAINTENANCE

SECTION 16010 - PERMANENT ELECTRICAL SERVICE

- 1.1 GENERAL
1.2 SECTION REQUIREMENTS
1.3 MATERIALS
1.4 EXECUTION
1.5 MAINTENANCE



ONLY NOT FOR CONSTRUCTION



STORE NO.: 5158
DUPONT & TONKEL
5044 E DUPONT ROAD
FORT WATNE, IN 46825

Table with columns: SYMBOL, DESCRIPTION, SYMBOL, DESCRIPTION.

Electrical Specifications

E010

