

Report By:

National TAB
1329 E. KEMPER ROAD
SUITE 4210
CINCINNATI, OH 45246



Report: TAB Report
Function: Test, Adjust, & Balance
Date: 09/03/2025
Completed By: National TAB

PROJECT
09-01-25 WAWA #7401 PLAINFIELD, IN

8487 CMBY ROAD

PLAINFIELD, IN 46168

Client

Wawa
260 West Baltimore Pike

Wawa, PA 19063

National TAB

Project: 09-01-25 WAWA #7401 PLAINFIELD, IN

Table Of Contents

Section	Page #
SUMMARY	3
REMARKS	4
BALANCE SCHEDULE	12
CHECKLIST	13
AHU/RTU	24
FAN - Exhaust	30
GRD LAYOUT	35

Project Summary

The summary below provides a quick understanding of our scope of work and general testing procedures. Enclosed in the report is further detail about your building performance including recommendations, asset data, and pictures. Our focus is to work with the trades to remedy any issues or deficiencies during the actual field balancing and not after the balancing has occurred to achieve a positive environment and outcome. The level of success is determined by the availability of the trades, possible parts needed, or time constraints.

RTU's (Roof Top Units) w/ Diffusers

Each of the RTU's were measured at their terminal devices or via traverse to establish a total flow for that unit. Each RTU was adjusted to within tolerance of the engineer's design flow. Each outlet was then adjusted to within tolerance of the design flow. Outside air was measured by reading the intake air opening with a velocity grid and multiplying by the free area. The outside air damper was adjusted until the airflow was within the design requirements. Any equipment that fell outside of that tolerance is noted throughout the report.

General Exhaust Fans w/ Grilles

The general exhaust fans were measured by reading each air device with a flow hood. The total airflow for each fan is equivalent to the sum of these readings. Fan speed was then adjusted so that the airflow was within tolerance of design. Each terminal device was balanced to within tolerance of the design volume using the installed volume dampers. Any equipment that fell outside of this tolerance is noted throughout the report.

Ceiling Exhaust Fans

The ceiling exhaust fans were measured using a flow hood. If speed adjustment was provided, the fan speed was adjusted to within design tolerance. Any equipment that fell outside of this tolerance is noted throughout the report.

Final Building Tests

After completing the test and balance the final building pressure was measured. It was confirmed that the building pressure fell within acceptable tolerances and that the pressure measurement coincides with the actual and design net airflow. Any deviations from these standards are noted throughout the report.

Issue List

- EF-1/EF-2/EF-3 missing speed controllers
- EF-1/EF-2/EF-3 wrong fans installed
- RTU-1/RTU-2/RTU-3 missing space sensors
- RTU-2 diffuser 2-5 Deleted
- RTU-2 Spiral duct Diffusers
- RTU-2/RTU-3 incorrect labeling
- RTU-3 return grilles

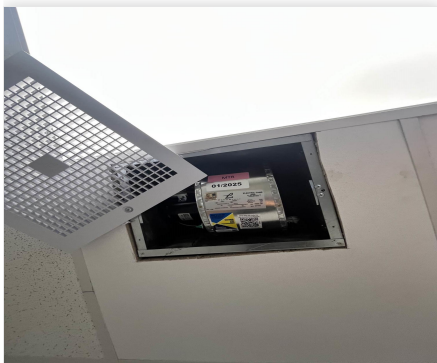


09-01-25 WAWA #7401 PLAINFIELD, IN

Project Issue Information

Issue Name : EF-1/EF-2/EF-3 missing speed controllers
Description : EF-1/EF-2/EF-3 missing speed controllers. EF-1/EF-2 are low on flow at EF-1: 312/375CFM EF-2: 226/400CFM Unable to increase due to direct wiring. EF-3 is high on flow at 329/200CFM. Unable to decrease due to direct wiring. Recommend installing speed controllers to properly balance to design airflow.
Created By : National TAB **Assigned To :** National TAB - Dylan Crisman
Status : Open
Priority : Urgent **Asset Tag :**
Originated Date : 09/03/2025 - Dylan Crisman - National TAB

Project Issue File Details



09/03/2025



09/03/2025



09/03/2025

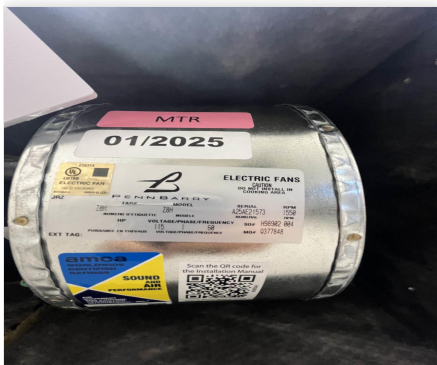


09-01-25 WAWA #7401 PLAINFIELD, IN

Project Issue Information

Issue Name : EF-1/EF-2/EF-3 wrong fans installed
Description : Fans per plans show Greenheck fans to be installed. Fans installed on site are PennBarry exhaust fans. Could not confirm with GC/Construction group on if this was an approved change.
Created By : National TAB **Assigned To :** National TAB - Brianna Biggs
Status : Open
Priority : InfoOnly **Asset Tag :**
Originated Date : 09/03/2025 - Dylan Crisman - National TAB

Project Issue File Details



09/03/2025



09/03/2025



09/03/2025

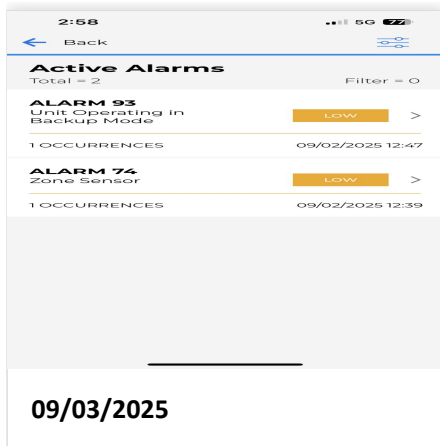


09-01-25 WAWA #7401 PLAINFIELD, IN

Project Issue Information

Issue Name : RTU-1/RTU-2/RTU-3 missing space sensors
Description : Missing space sensors and wiring for sensors to RTUs. Wires will need to be ran and sensors installed in proper places per plans on MSET. Units are operating on return air back up currently due to this and shows an alarm for space sensors.
Created By : National TAB **Assigned To :** National TAB - Dylan Crisman
Status : Open
Priority : Urgent **Asset Tag :**
Originated Date : 09/03/2025 - Dylan Crisman - National TAB

Project Issue File Details



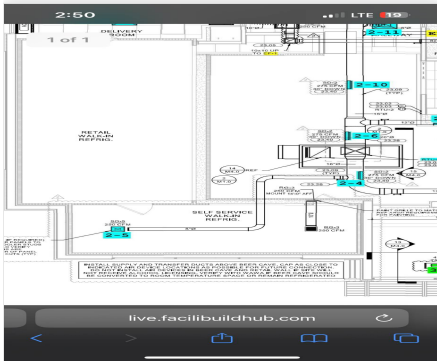


09-01-25 WAWA #7401 PLAINFIELD, IN

Project Issue Information

Issue Name : RTU-2 diffuser 2-5 Deleted
Description : RTU-2 diffuser 2-5 to walk in cooler has been deleted per GC/Construction group, Duct has been added for future considerations but confirmed that the diffuser has been deleted and damper for duct has been fully closed. Balanced rest of units diffusers to design.
Created By : National TAB **Assigned To :** National TAB - Dylan Crisman
Status : Open
Priority : InfoOnly **Asset Tag :**
Originated Date : 09/03/2025 - Dylan Crisman - National TAB

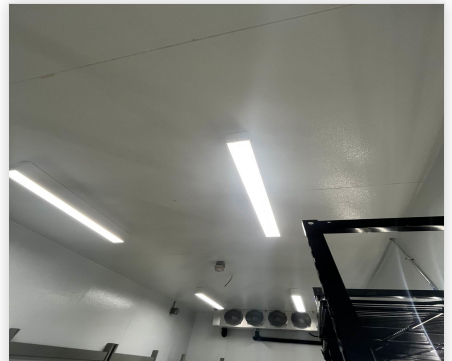
Project Issue File Details



09/03/2025



09/03/2025



09/03/2025



09-01-25 WAWA #7401 PLAINFIELD, IN

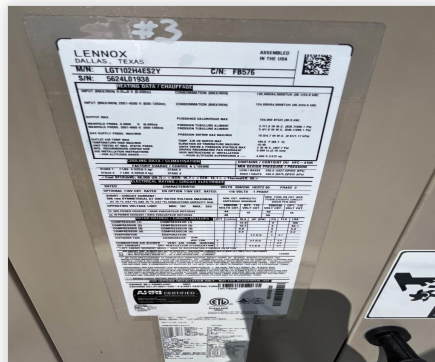
Project Issue Information

Issue Name : RTU-2 Spiral duct Diffusers
Description : Spiral duct diffusers in open sales floor are unable to be balanced due to having the incorrect damper type installed. They have a deflector plate that only covers half of the free area of the diffuser grille. When fully closed it doesn't lower CFM value, rather pushes all air to one side of the register. OBD dampers are to be installed per spec.
Created By : National TAB **Assigned To :** National TAB - Dylan Crisman
Status : Open
Priority : Urgent **Asset Tag :**
Originated Date : 09/04/2025 - Dylan Crisman - National TAB

Project Issue File Details



09/04/2025



09/04/2025



09-01-25 WAWA #7401 PLAINFIELD, IN

Project Issue Information

Issue Name : RTU-2/RTU-3 incorrect labeling
Description : RTU-2 and RTU-3 are labeled incorrectly. 3 is labeled as #2 2 is labeled as #3 on rooftop and within the core app for the units controller. This could cause some confusion for anyone performing maintenance on the units.
Created By : National TAB **Assigned To :** National TAB - Dylan Crisman
Status : Open
Priority : InfoOnly **Asset Tag :**
Originated Date : 09/04/2025 - Dylan Crisman - National TAB

Project Issue File Details



09/04/2025



09/04/2025



09-01-25 WAWA #7401 PLAINFIELD, IN

Project Issue Information

Issue Name : RTU-3 return grilles
Description : Return grilles/ducts are tucked up above ceiling in office spaces. These need to be properly dropped into drop ceiling per plans above soda machines.
Created By : National TAB **Assigned To :** National TAB - Dylan Crisman
Status : Open
Priority : High **Asset Tag :**
Originated Date : 09/03/2025 - Dylan Crisman - National TAB

Project Issue File Details



09/03/2025



09/03/2025

AIR BALANCE SCHEDULE

UNIT	AREA SERVED	HVAC SUPPLY		HVAC RETURN		HVAC OUTDOOR		OA %		HOOD MAKE-UP		HOOD EXHAUST		GENERAL EXH.	
		DESIGN	ACTUAL	DESIGN	ACTUAL	DESIGN	ACTUAL	DESIGN	ACTUAL	DESIGN	ACTUAL	DESIGN	ACTUAL	DESIGN	ACTUAL
RTU-1	FOOD SERVICE	4500	4557	3800	3837	700	720	15.6%	15.8%						
RTU-2	RETAIL	3400	3772	3020	3379	380	393	11.2%	10.4%						
RTU-3	FOH	2400	2497	2200	2299	200	198	8.3%	7.9%						
EF-1	RESTROOMS													375	312
EF-2	BOH													400	226
EF-3	TRASH													200	329
TOTALS		10300	10826	9020	9515	1280	1311			0	0	0	0	975	867

NET BUILDING AIRFLOW CALCULATION

TOTALS	DESIGN	ACTUAL
TOTAL OA	1280	1311
TOTAL EXHAUST	975	867
NET AIRFLOW	305	444

DOOR TESTED	BUILDING PRESSURE MEASUREMENTS (IN. H2O)
FRONT	0.0108
SIDE	
REAR	0.0079
AVERAGE	0.0094

FINAL CHECKS

ACTUAL NET AIRFLOW COINCIDES WITH DESIGN: ✓

MEASURED PRESSURES COINCIDES WITH ACTUAL NET AIRFLOW: ✓

PRESSURE FALLS WITHIN IMC TOLERANCE OF +/-0.02" W.C. ✓

NOTES:

CheckList List

- 01: RTU's/AHU's
- 02: LENNOX SETUP PARAMETERS
- 03: SENSOR WIRING (LENNOX)
- 04: EF'S
- 05: CLOSEOUT CHECKS



09-01-25 WAWA #7401 PLAINFIELD, IN

CheckList Information

Name : 01: RTU's/AHU's **Status :** Completed

Assigned Organization : National TAB **Asset :**

Requesting Organization : National TAB

Created Date : 08/20/2025 - Natasha Louw - National TAB

Completed Date : 09/04/2025 - Dylan Crisman - National TAB

CheckList Item Details

RTU's/AHU's

All diffusers and grilles are installed and match design? Pass

Comment:

Clean filters installed? Pass

Comment:

Economizers are assembled and functional? Pass

Comment:

Motors are all operating below the FLA rating? Pass

Comment:

Are belts tight? N/A

Comment:

If direct drive unit is the speed controller working? Pass

Comment:

Is gas piping installed and valves turned on? Pass

Comment:

Condensate drains are installed?

Pass

Comment:

Unit free of noticeable noise and vibration

Pass

Comment:

Final outside air damper position is marked with permanent marker?

Pass

Comment:

No alarms present?

Fail

Comment:

Issue Created.

Any noticeable duct leakage?

Pass

Comment:

Total supply and OA flows are balanced within +/-5% and supply & return diffusers within +/-10%?

Fail

Comment:

RTU-2 Spiral duct on sales floor could not be balanced due to wrong damper type.

IN TEST MODE, TEST THE FOLLOWING:

Cooling mode is operational? Record EAT/LAT for each unit:

Pass

Comment:

RTU-1: 71.3F / DAT:57.7F RTU-2: 72.9F / DAT: 56.9F RTU-3: 73.2F / DAT: 58.0F

Heating mode is operational? Record EAT/LAT for each unit:

Pass

Comment:

RTU-1: 73.4F / DAT: 98.6F RTU-2: 74.0F / DAT: 94.4F RTU-3: 74.9F / DAT: 92.3F

Dehumidification mode is operational? (Feel dehumidification coil with your hand. Is it hot?) Record EAT/LAT for each unit:

Pass

Comment:

RTU-1: 70.8F / DAT: 66.3F RTU-2: 73.1F / DAT: 68.2F RTU-3: 72.7F / DAT: 66.5F



09-01-25 WAWA #7401 PLAINFIELD, IN

CheckList Information

Name : 02: LENNOX SETUP PARAMETERS **Status :** Completed

Assigned Organization : National TAB **Asset :**

Requesting Organization : National TAB

Created Date : 08/20/2025 - Natasha Louw - National TAB

Completed Date : 09/04/2025 - Dylan Crisman - National TAB

CheckList Item Details

UNIT ID CONFIGURATIONS

BACNET CONFIGURATION: GO TO SETTINGS>GENERAL>CONFIGURATION ID1 POSITION 5 SET TO "N". Pass

Comment:

NETWORK CONFIGURATION: GO TO SETUP>NETWORK INTEGRATION, SET TO BACNET IP Pass

Comment:

CONTROL MODE: SET CONTROL MODE TO ROOM SENSOR: CO2, TEMP & HUMIDITY (PER UNIT, AS NEEDED). Pass

Comment:

INDIVIDUAL PARAMETER CONFIGURATIONS (MECHANICAL CONTRACTOR TO DEFINE / AS APPLICABLE):

PARAMETER 105 DEHUMID MODE: 7 NO CONDITIONS Pass

Comment:

PARAMETER 106 DEHUMID SETPOINT: 50, THIS IS A CENTERED SET POINT (+/-) Yes

Comment:

PARAMETER 107 DEHUMID DEADBAND: 3 (DEFAULT) THIS IS THE ACTUAL +/- VALUE Pass

Comment:

PARAMETER 117 CO2 DAMPER MAX OPEN: 50%

Pass

Comment:

PARAMETER 118 CO2 START OPEN PPM: 1500

Pass

Comment:

PARAMETER 119 CO2 MAX OPEN PPM: 1500

Pass

Comment:

PARAMETER 137 OCCHET SET POINT: 68 (BACK UP)

Pass

Comment:

PARAMETER 131 SET TO THE SAME % AS THE MINMIUM OA DAMPER SETPOINT

Pass

Comment:

PARAMETER 139 OCC COOLING SET POINT: 72 (BACK UP)

Pass

Comment:

PARAMETER 154 OCC BLOWER MODE: ON-CONTINUOUS 1

Pass

Comment:

CFM VALUES / MSAV FAN SPEEDS (AIR BALANCER TO DEFINE / IF APPLICABLE):

OA DAMPER SET TO SAME POSITION IN ALL FAN SPEEDS?

Pass

Comment:

ALL FAN SPEEDS SET TO THE SAME CFM VALUE (ENTER SETPOINTS BELOW)

Pass

Comment:

HEAT CFM VALUE: PER THE HVAC SCHEDULE

Pass

Comment:

HIGH COOL CFM VALUE: THE HIGH COOL CFM VALUE

Pass

Comment:

LOW COOL CFM VALUE: MATCH THE HIGH COOL CFM VALUE

Pass

Comment:

VENTILATION CFM VALUE: MATCH THE HIGH COOL CFM VALUE

Pass

Comment:



09-01-25 WAWA #7401 PLAINFIELD, IN

CheckList Information

Name : 03: SENSOR WIRING (LENNOX) **Status :** Completed
Assigned Organization : National TAB **Asset :**
Requesting Organization : National TAB
Created Date : 08/20/2025 - Natasha Louw - National TAB
Completed Date : 09/04/2025 - Dylan Crisman - National TAB

CheckList Item Details

COMBINATION TEMPERATURE/HUMIDITY SENSOR

Sensors are installed where shown on the drawing? Fail

Comment:

Zone Sensors not installed or wired to units. Issue Created.

2 conductor shielded cable has one wire landed to Vin, one to GND, and the shield wire is not connected. Fail

Comment:

Zone Sensors not installed or wired to units. Issue Created.

For second shielded cable, one wire is landed to Vout and the shield wire is not connected. Fail

Comment:

Zone Sensors not installed or wired to units. Issue Created.

Verify that the CORE or Prodigy controller is sensing a relative humidity (record the reading) Fail

Comment:

Zone Sensors not installed or wired to units. Issue Created.



09-01-25 WAWA #7401 PLAINFIELD, IN

CheckList Information

Name : 04: EF'S **Status :** Completed

Assigned Organization : National TAB **Asset :**

Requesting Organization : National TAB

Created Date : 08/20/2025 - Natasha Louw - National TAB

Completed Date : 09/04/2025 - Dylan Crisman - National TAB

CheckList Item Details

EF's

Rotation is correct?	Pass
-----------------------------	------

Comment:

Belts are tight (if applicable)?	N/A
---	-----

Comment:

Speed controller installed and functional (if applicable)?	Fail
---	------

Comment:

Speed controller is not installed, fans are direct wired

There is no major leakage around base of fan?	Pass
--	------

Comment:

Is the motor operating below the motor FLA rating?	Pass
---	------

Comment:

Back draft damper installed and can it fully open?	Pass
---	------

Comment:

Unit free of noticeable noise and vibration?

Pass

Comment:

Total exhaust flow balanced within +/-5% and grilles are within +/-10%?

Fail

Comment:

Speed Controllers not installed, Airflow is initially low, unable to adjust airflow to design.



09-01-25 WAWA #7401 PLAINFIELD, IN

CheckList Information

Name : 05: CLOSEOUT CHECKS **Status :** Completed

Assigned Organization : National TAB **Asset :**

Requesting Organization : National TAB

Created Date : 08/20/2025 - Natasha Louw - National TAB

Completed Date : 09/04/2025 - Dylan Crisman - National TAB

CheckList Item Details

SPACE COMFORT

Is space free of drafting? Pass

Comment:

Is space comfortable in all areas? Pass

Comment:

Is the space free of ventilation noise? Pass

Comment:

BUILDING PRESSURE

Do actual net building airflow, design net building airflow, and pressure coincide? If not why? (All three should either be positive or negative) Pass

Comment:

National TAB

Project: 09-01-25 WAWA #7401 PLAINFIELD, IN

System/Unit: AHU/RTU



Asset: RTU1

AREA:FOOD SERVICE

Unit Data		
	Design	Actual
MFG	LENNOX	LENNOX
Serial Num	-	5624J00866
Model Num	LCT150H4E	LCT150H4EN1Y
Type	RTU	RTU
Configuration	VERTICAL	VERTICAL
Num OA Filters 1	-	2
OA Filter Size 1	-	23X14
Num Final Filter 1	-	4
Final Filter Size 1	-	20X25X2

Motor Data		
	Design	Actual
Motor MFG	-	EBMPAPST
Frame	-	IP20
Horsepower	3.75	3.8
Motor Rpm	-	2200
Phase	3	3
Rated Voltage	208	208
Rated Amperage	-	8.7

Test Data		
	Design	Actual
SF CFM	4500	4557
SF RPM	-	1628
MOTOR RPM	-	1628
RA CFM	3800	3831
OA CFM	700	720
RL Voltage	-	210/210/211
RL Amperage	-	3.9/3.8/3.8
SF System SetPt	-	74%
RA Damper Position	-	MECHANICAL LINKAGE
RA Damper Type	-	ECONOMIZER
OA Damper Position	-	29%
OA Damper Type	-	ECONOMIZER

Performance Data		
	Design	Actual
MA Plenum SP	-	-0.52"
Fan Suction SP	-	-0.72"
Fan Discharge SP	-	0.30"
Total ESP	0.70"	0.82"
Fan Total SP	-	1.02"

Completed By: Dylan Crisman on 09/03/2025

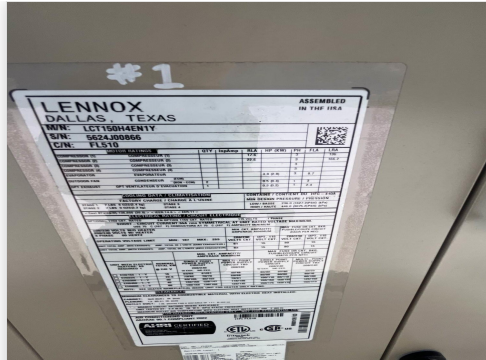
Notes:
Unable to balance spiral duct diffusers due to deflector plates being installed instead of OBD integral dampers. Issue Created.

Written By: Dylan Crisman on 09/03/2025

Unit Data - PHOTO LOG



09/02/2025



09/02/2025



09/02/2025

National TAB

Project:09-01-25 WAWA #7401 PLAINFIELD, IN

AHU/RTU



Diffuser Supply (GRD)

RTU1/FOOD SERVICE

Asset									
Asset Name	Location	Type	Size	DESIGN CFM	AK	CFM(1)	CFM(2)	FINAL CFM	% to design
SGRD1	COFFEE	SD-6	12"	500	1.0	785	534	534	106.8
SGRD2	FOOD SERVICE	SD-6	10"	425	1.0	457	436	436	102.6
SGRD3	FOOD SERVICE	SD-6	10"	425	1.0	421	441	441	103.8
SGRD4	FOOD SERVICE	SD-6	10"	425	1.0	388	436	436	102.6
SGRD5	FOOD SERVICE	SD-6	10"	425	1.0	281	404	404	95.1
SGRD6	FOOD SERVICE	SD-6	10"	425	1.0	268	399	399	93.9
SGRD7	FOOD SERVICE	SD-6	10"	400	1.0	440	384	384	96.0
SGRD8	FOOD SERVICE	SD-6	10"	400	1.0	451	398	398	99.5
SGRD9	FOOD SERVICE	SD-6	10"	400	1.0	427	421	421	105.3
SGRD10	FOOD SERVICE	SD-1	10"	300	1.0	407	300	300	100.0
SGRD11	FOOD SERVICE	SD-1	10"	375	1.0	334	404	404	107.7
Total				4500		4659	4557	4557	101.27%

Diffuser Ret/Exh (GRD)

RTU1/FOOD SERVICE

Asset									
Asset Name	Location	Type	Size	DESIGN CFM	AK	CFM(1)	CFM(2)	FINAL CFM	% to design
EGRD1	FOOD SERVICE	RG-1	14"	860	1.0	624	791	791	92.0
EGRD2	FOOD SERVICE	RG-1	14"	870	1.0	766	818	818	94.0
EGRD3	FOOD SERVICE	RG-1	14"	870	1.0	716	805	805	92.5
EGRD4	WASHROOM	RG-1	16X14	1200	1.0	1086	1120	1120	93.3
Total				3800		3192	3534	3534	93%

Completed By: Dylan Crisman on 09/03/2025

National TAB

Project: 09-01-25 WAWA #7401 PLAINFIELD, IN

System/Unit: AHU/RTU



Asset: RTU2

AREA:RETAIL

Unit Data		
	Design	Actual
MFG	LENNOX	LENNOX
Serial Num	-	5624L01938
Model Num	LGT102H4E	LGT102H4ES2Y
Type	RTU	RTU
Configuration	VRTICAL	VERTICAL
Num OA Filters 1	-	2
OA Filter Size 1	-	23X14
Num Final Filter 1	-	4
Final Filter Size 1	-	20X25X2

Motor Data		
	Design	Actual
Motor MFG	-	EBMPAPST
Frame	-	IP55
Horsepower	3.75	3.8
Motor Rpm	-	1780
Phase	3	3
Rated Voltage	208	208
Rated Amperage	-	8.0
Service Factor	-	

Test Data		
	Design	Actual
SF CFM	3650	3772
SF RPM	-	997
MOTOR RPM	-	997
RA CFM	3270	3379
OA CFM	380	393
RL Voltage	-	211/210/211
RL Amperage	-	1.9/1.9/2.0
SF System SetPt	-	56%
RA Damper Position	-	MECHANICAL LINKAGE
RA Damper Type	-	ECONOMIZER
OA Damper Position	-	25%
OA Damper Type	-	ECONOMIZER

Performance Data		
	Design	Actual
MA Plenum SP	-	-0.32"
Fan Suction SP	-	-0.48"
Fan Discharge SP	-	0.29"
Total ESP	1.00"	0.61"
Fan Total SP	-	0.77"

Completed By: Dylan Crisman on 09/03/2025

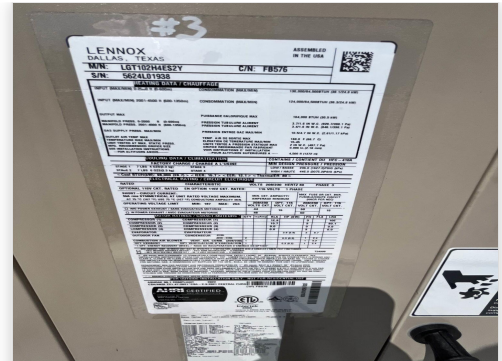
Unit Data - PHOTO LOG



09/02/2025



09/02/2025



09/02/2025

National TAB

Project:09-01-25 WAWA #7401 PLAINFIELD, IN

AHU/RTU



Diffuser Supply (GRD)

RTU2/RETAIL

Asset									
Asset Name	Location	Type	Size	DESIGN CFM	AK	CFM(1)	CFM(2)	FINAL CFM	% to design
SGRD1	RETAIL	SD-2	12"	275	0.54	415	313	313	113.8
SGRD2	RETAIL	SD-2	12"	275	0.54	492	372	372	135.3
SGRD3	RETAIL	SD-2	12"	300	0.54	408	308	308	102.7
SGRD4	RETAIL	SD-2	12"	275	0.54	543	410	410	149.1
SGRD5	WALK-IN FRIDGE	SD-5	8"	250	1.0	0	0	0	0.0
SGRD6	RETAIL	SD-2	16"	275	0.54	508	384	384	139.6
SGRD7	RETAIL	SD-2	12"	275	0.54	287	217	217	78.9
SGRD8	RETAIL	SD-2	12"	275	0.54	341	258	258	93.8
SGRD9	RETAIL	SD-2	12"	275	0.54	340	200	200	72.7
SGRD10	RETAIL	SD-2	16"	275	0.54	578	437	437	158.9
SGRD11	HALLWAY	SD-1	8"	200	1.0	210	193	193	96.5
SGRD12	WOMENS RR	SD-5	8"	100	1.0	209	103	103	103.0
SGRD13	REAR VESTIBULE	SD-5	8"	200	1.0	17	188	188	94.0
SGRD14	MENS RR	SD-5	8"	150	1.0	212	160	160	106.7
SGRD15	DELIVERY ROOM	SD-1	8"	250	1.0	271	229	229	91.6
Total				3650		4831	3772	3772	103.34%

Completed By: Dylan Crisman on 09/03/2025

Asset	Notes	Date	Written By
SGRD5	Diffuser has been deleted per GC.	09/03/2025	Dylan Crisman

National TAB

Project: 09-01-25 WAWA #7401 PLAINFIELD, IN

System/Unit: AHU/RTU



Asset: RTU3

AREA:FOH

Unit Data		
	Design	Actual
MFG	LENNOX	LENNOX
Serial Num	-	5624K03441
Model Num	LGT072H4E	LGT072H4E
Type	RTU	RTU
Configuration	VERTICAL	VERTICAL
Num OA Filters 1	-	1
OA Filter Size 1	-	29x14.5
Num Final Filter 1	-	4
Final Filter Size 1	-	20x20x2

Motor Data		
	Design	Actual
Motor MFG	-	EBMPAPST
Frame	-	
Horsepower	1.5	1.5
Motor Rpm	-	3300
Phase	3	3
Rated Voltage	208	208
Rated Amperage	-	4.4
Service Factor	-	

Test Data		
	Design	Actual
SF CFM	2400	2497
SF RPM	-	2442
MOTOR RPM	-	2442
RA CFM	2200	2299
OA CFM	200	198
RL Voltage	-	209/210/210
RL Amperage	-	2.4/2.3/2.4
SF System SetPt	-	74%
RA Damper Position	-	MECHANICAL LINKAGE
RA Damper Type	-	ECONOMIZER
OA Damper Position	-	14%
OA Damper Type	-	ECONOMIZER

Performance Data		
	Design	Actual
MA Plenum SP	-	-0.31"
Fan Suction SP	-	-0.47"
Fan Discharge SP	-	0.30"
Total ESP	0.50"	0.61"
Fan Total SP	-	0.77"

Completed By: Dylan Crisman on 09/03/2025

Unit Data - PHOTO LOG



09/02/2025



09/02/2025



09/02/2025

National TAB
 Project:09-01-25 WAWA #7401 PLAINFIELD, IN
AHU/RTU



Diffuser Supply (GRD)

RTU3/FOH

Asset									
Asset Name	Location	Type	Size	DESIGN CFM	AK	CFM(1)	CFM(2)	FINAL CFM	% to design
SGRD1	ENTRY	SD-5	18"	250	1.0	220	264	264	105.6
SGRD2	FOH	SD-2	18"	450	1.0	484	469	469	104.2
SGRD3	FOH	SD-2	18"	450	1.0	470	473	473	105.1
SGRD4	FOH	SD-2	14"	450	1.0	466	460	460	102.2
SGRD5	FOH	SD-2	14"	450	1.0	457	473	473	105.1
SGRD6	ASSOCIATES AREA	SD-1	8"	200	1.0	215	212	212	106.0
SGRD7	OFFICE	SD-1	8"	150	1.0	269	146	146	97.3
Total				2400		2581	2497	2497	104.04%

Completed By: Dylan Crisman on 09/03/2025

National TAB

Project: 09-01-25 WAWA #7401 PLAINFIELD, IN

System/Unit: FAN - Exhaust



Asset: EF1

AREA:RESTROOMS

Unit Data		
	Design	Actual
MFG	GREENHECK	PENNBARRY
Model Num	GB-098-6	DX11R
Serial Num	-	L24YZ28510
Type	DOWNBLAST	DOWNBLAST
Configuration	VERTICAL	VERTICAL

Test Data		
	Design	Actual
CFM	375	312
Fan Rotation	-	CCW
System SetPt	-	DIRECT WIRED
Total ESP	0.38"	0.16"
Fan Inlet SP	-	-0.16"
Fan Discharge SP	-	ATM

Motor Data		
	Design	Actual
Motor MFG	-	FASCO
Frame	-	
Horsepower	0.167	0.167
Motor Rpm	-	1550
Phase	1	1
Voltage (rated)	120	115
Amperage (rated)	-	1.5
Service Factor	-	

Completed By: Dylan Crisman on 09/03/2025

Notes:
 Unit is low on flow, at 312/375.
 Direct wired and missing speed controller.
 Unable to increase airflow to design.

Written By: Dylan Crisman on 09/03/2025

Unit Data - PHOTO LOG



09/02/2025



09/02/2025

National TAB

Project:09-01-25 WAWA #7401 PLAINFIELD, IN

FAN - Exhaust



Diffuser Ret/Exh (GRD)

EF1/RESTROOMS

Asset									
Asset Name	Location	Type	Size	DESIGN CFM	AK	CFM(1)	CFM(2)	FINAL CFM	% to design
EGRD1	WOMENS RR	EG-1	8X8	150	1.0	148		148	98.7
EGRD2	MENS RR	EG-1	8X8	225	1.0	164		164	72.9
Total				375		312	0	312	83.2%

National TAB

Project: 09-01-25 WAWA #7401 PLAINFIELD, IN

System/Unit: FAN - Exhaust



Asset: EF2

AREA:BOH

Unit Data		
	Design	Actual
MFG	GREENHECK	PENNBERRY
Model Num	GB-098-6	DX11R
Serial Num	-	L24YZ28513
Type	DOWNBLAST	DOWNBLAST
Configuration	VERTICAL	VERTICAL

Test Data		
	Design	Actual
CFM	400	226
Fan Rotation	-	CCW
System SetPt	-	DIRECT WIRED
Total ESP	0.38"	-0.10"
Fan Inlet SP	-	-0.10"
Fan Discharge SP	-	ATM

Motor Data		
	Design	Actual
Motor MFG	-	FASCO
Frame	-	
Horsepower	0.167	0.167
Motor Rpm	-	1550
Phase	1	1
Voltage (rated)	120	115
Amperage (rated)	-	1.5
Service Factor	-	

Completed By: Dylan Crisman on 09/03/2025

Notes:

Fan is low on flow at 226/400.
Direct wired and missing speed controller.
Unable to increase airflow to design.

Written By: Dylan Crisman on 09/03/2025

Unit Data - PHOTO LOG



09/02/2025



09/02/2025

National TAB

Project:09-01-25 WAWA #7401 PLAINFIELD, IN

FAN - Exhaust



Diffuser Ret/Exh (GRD)

EF2/BOH

Asset									
Asset Name	Location	Type	Size	DESIGN CFM	AK	CFM(1)	CFM(2)	FINAL CFM	% to design
EGRD1	BOH	RG-2	8X8	200	1.0	146		146	73.0
EGRD2	BOH	RG-2	8X8	200	1.0	80		80	40.0
Total				400		226	0	226	56.5%

National TAB

Project: 09-01-25 WAWA #7401 PLAINFIELD, IN

System/Unit: FAN - Exhaust



Asset: EF3

AREA:TRASH

Unit Data		
	Design	Actual
MFG	GREENHECK	PENNBARRY
Model Num	SP-B200	Z8H
Serial Num	-	A25E21573
Type	CEILING	CEILING
Configuration	VERTICAL	VERTICAL

Motor Data		
	Design	Actual
Motor MFG	-	FASCO
Motor Rpm	-	1550
Phase	1	1
Voltage (rated)	120	115
Amperage (rated)	-	1.6

Test Data		
	Design	Actual
CFM	200	329
Fan RPM	-	1550
Fan Rotation	-	CCW
Motor RPM	-	1550
System SetPt	-	WIRED FOR HIGH SPEED
Fan Discharge SP	-	ATM

Completed By: Dylan Crisman on 09/03/2025

Notes:

Unit is high on flow at 329/200 CFM. Unable to decrease due to missing speed controller and direct wiring setup. Issue created.

Written By: Dylan Crisman on 09/03/2025

