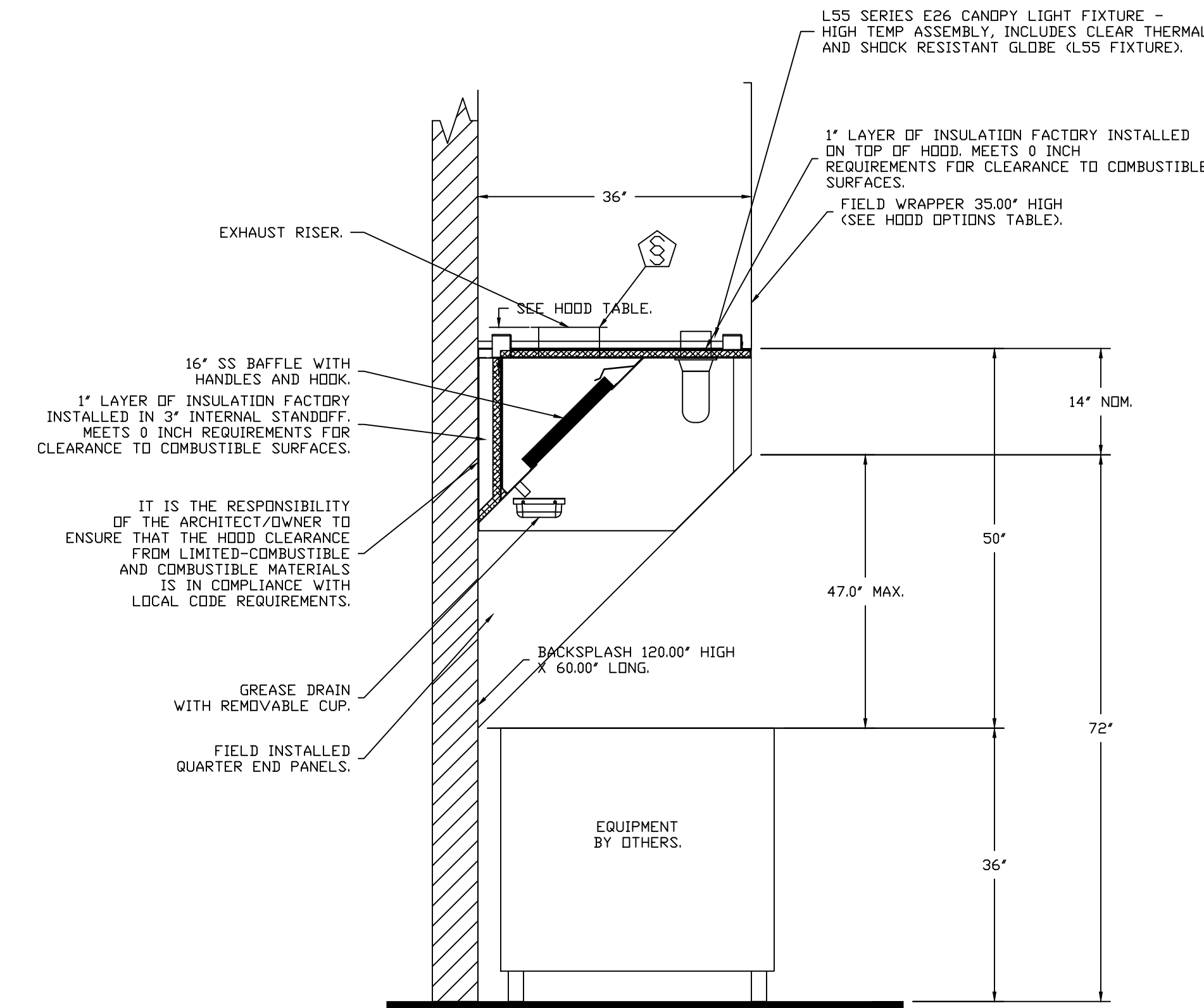


HOOD INFORMATION – JOB#4959677

HOOD NO	TAG	MODEL	MANUFACTURER	LENGTH	MAX COOKING TEMP	TYPE	APPLIANCE DUTY	DESIGN CFM/FT	TOTAL EXH CFM	EXHAUST PLENUM RISER(S)						HOOD CONSTRUCTION	HOOD CONFIG		
										WIDTH	LENG	HEIGHT	DIA	CFM	VEL		SP	END TO END	ROW
1	KHD1	3650 BD-2	CAPTIVEAIRE	4' 8"	450 DEG	I	MEDIUM	120	560			4'	8'	560	1604	-0.247"	430 SS WHERE EXPOSED	ALONE	ALONE

HOOD INFORMATION

HOOD NO	TAG	FILTER(S)				LIGHT(S)				UTILITY CABINET(S)				FIRE SYSTEM	HOOD HANGING WEIGHT	
		TYPE	QTY	HEIGHT	LENGTH	EFFICIENCY @ 7 MICRONS	QTY	TYPE	WIRE GUARD	LOCATION	SIZE	TYPE	SIZE			MODEL #
1	KHD1	SS BAFFLE WITH HANDLES	3	16"	16"	30%	2	L55 SERIES E26	NO						NO	261 LBS

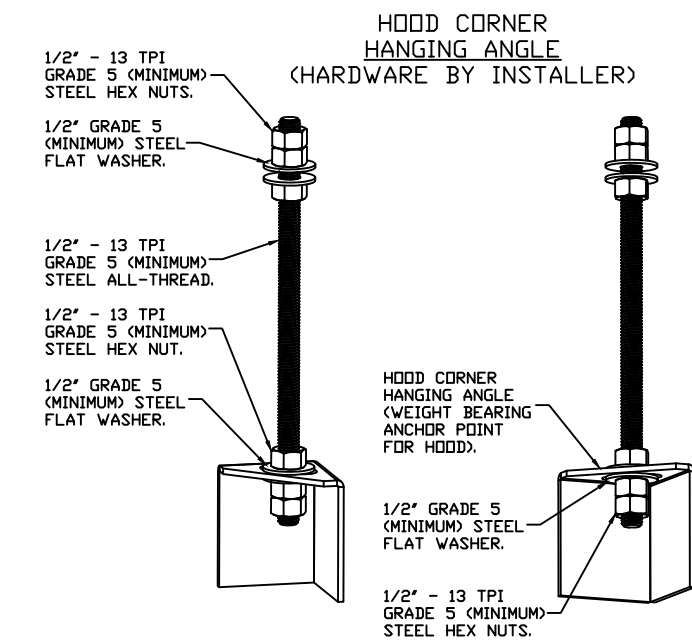


SECTION VIEW – MODEL 3650BD-2 HOOD – #1 (KHD1)

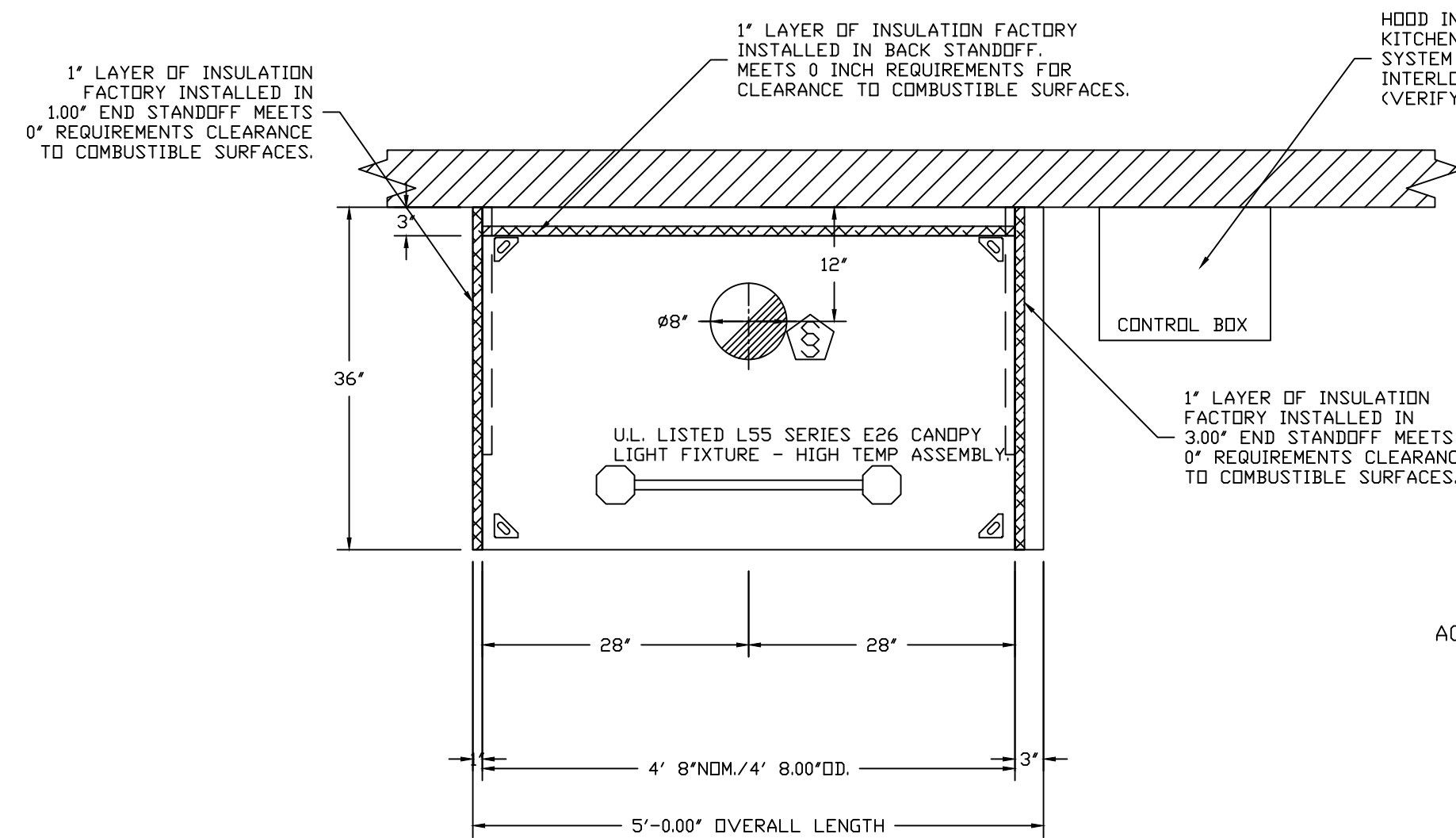
CAPTIVE-AIRE HOODS ARE BUILT IN COMPLIANCE WITH UL 710 AND NFPA 96 AND ARE RECOGNIZED BY ONE OR MORE OF THE FOLLOWING:

ETL SANITATION LISTED
ETL LISTED FILE# 3054804-001

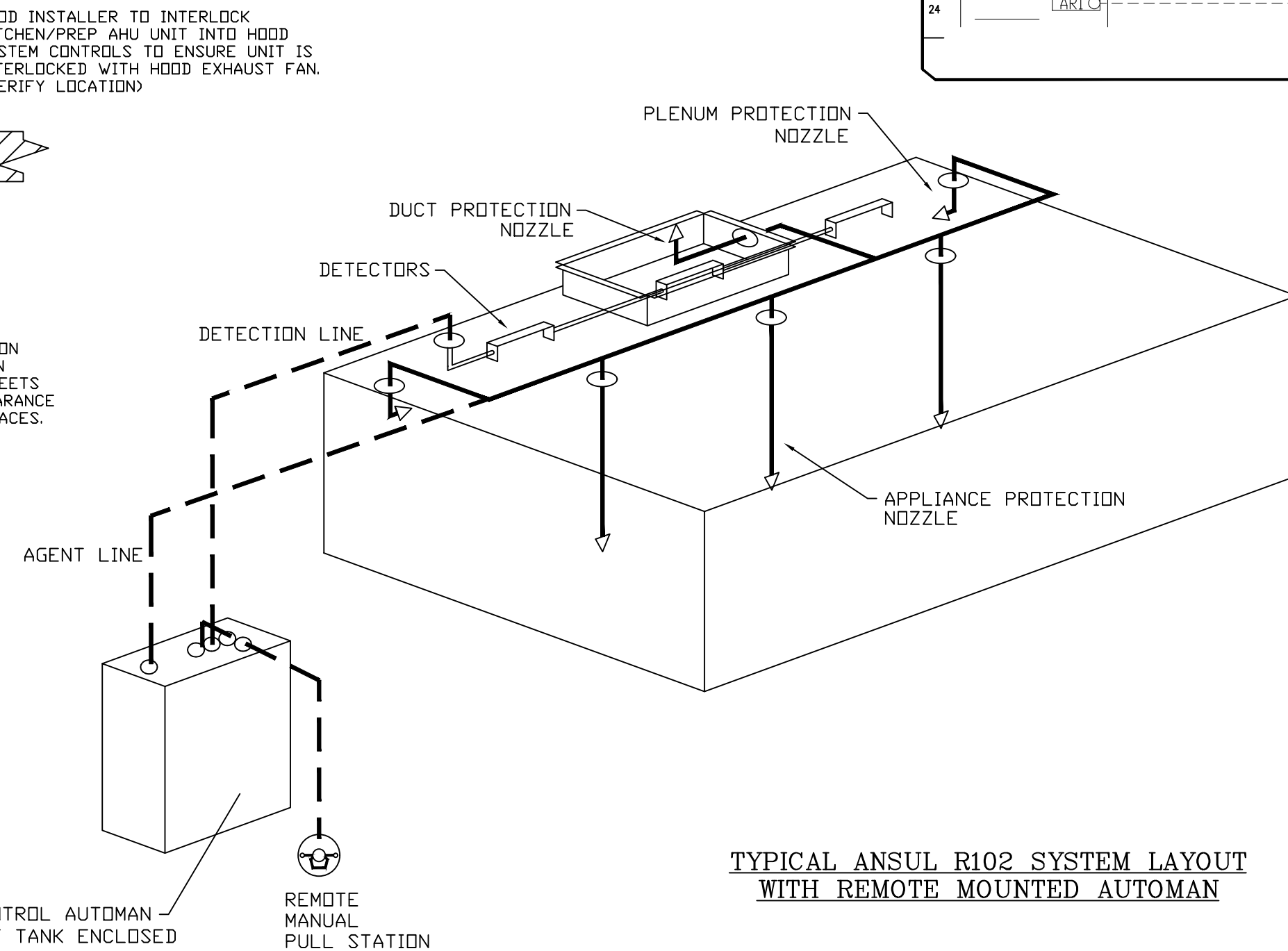
HOOD SYSTEM IS FABRICATED & DESIGNED PER UL-710 STANDARDS



HANGING ANGLE MUST BE SUPPORTED WITH 1/2" - 13 TPI GRADE 5 (MINIMUM) ALL-THREAD, SANDWICH HANGING ANGLES AND CEILING ANCHOR POINTS WITH 1/2" GRADE 5 (MINIMUM) STEEL FLAT WASHERS AND 1/2" - 13 TPI GRADE 5 (MINIMUM) HEX NUTS AS SHOWN. MUST USE DOUBLED HEX NUT CONFIGURATION BENEATH HOOD HANGING ANGLES AND ABOVE CEILING ANCHORS. MAINTAIN 1/4" OF EXPOSED THREADS BENEATH BOTTOM HEX NUT. TORQUE ALL HEX NUTS TO 57 FT-LBS.



PLAN VIEW – HOOD #1 (KHD1) 4' 8.00" LONG 3650BD-2



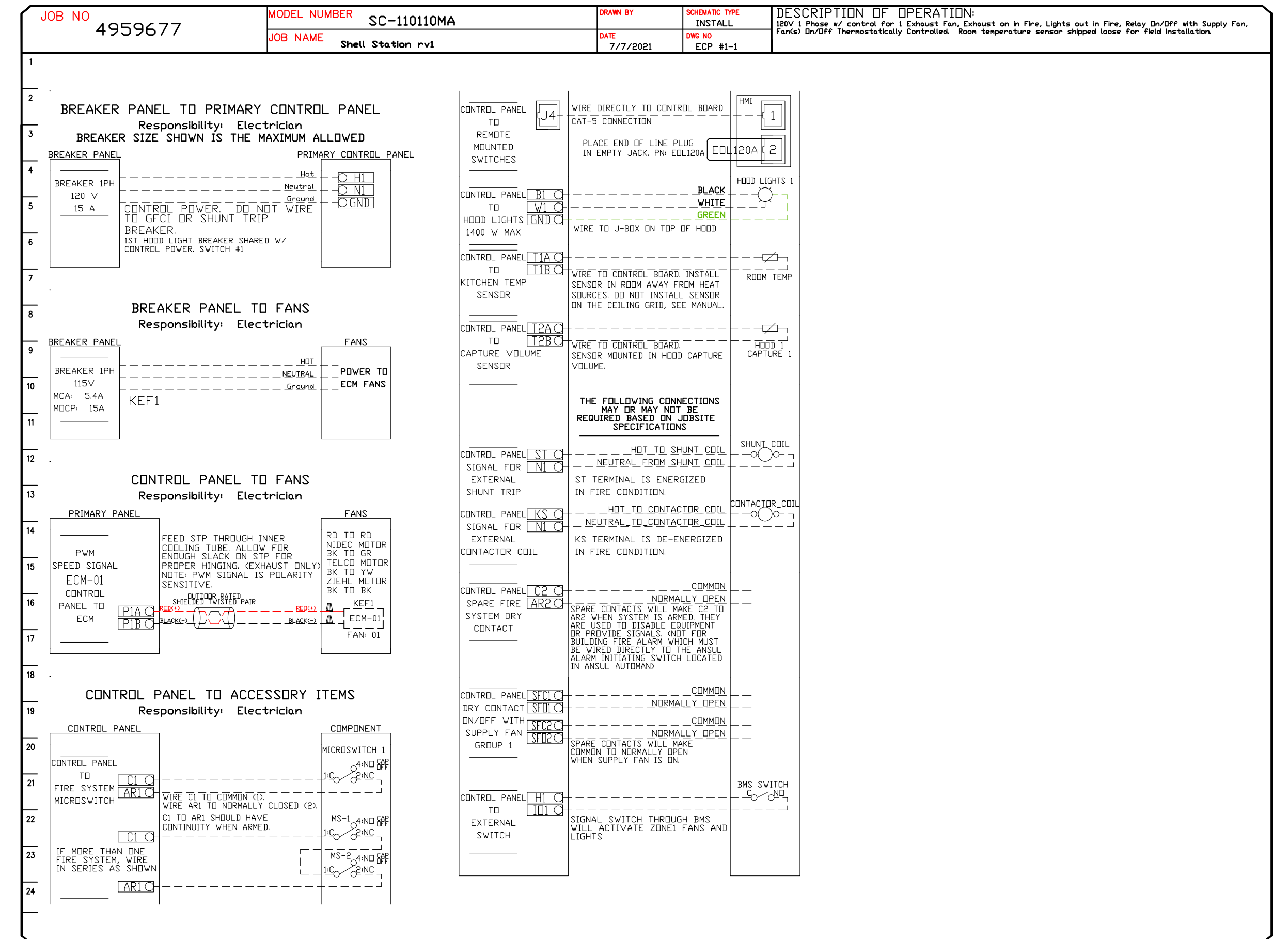
TYPICAL ANSUL R102 SYSTEM LAYOUT WITH REMOTE MOUNTED AUTOMAN

HOOD OPTIONS

HOOD NO	TAG	OPTION
1	KHD1	FIELD WRAPPER 35.00" HIGH FRONT, LEFT, RIGHT. BACKSPLASH 120.00" HIGH X 18.00" LONG 430 SS VERTICAL. BACKSPLASH 120.00" HIGH X 48.00" LONG 430 SS VERTICAL. BACKSPLASH 120.00" HIGH X 60.00" LONG 430 SS VERTICAL. BACKSPLASH - INSIDE CORNER 62.00" HIGH X 2.00" LEG LENGTH 430 SS VERTICAL. RIGHT END STANDOFF(FIN/SLP) 3' WIDE 36" LONG INSULATED. LEFT END STANDOFF(FIN/SLP) 1' WIDE 36" LONG INSULATED. RIGHT QUARTER END PANEL 26" TOP WIDTH, 0" BOTTOM WIDTH, 26" HIGH 430 SS. LEFT QUARTER END PANEL 26" TOP WIDTH, 0" BOTTOM WIDTH, 26" HIGH 430 SS. INSULATION FOR TOP OF HOOD. INSULATION FOR BACK OF HOOD. SENSOR-CV.

ELECTRICAL PACKAGE – JOB#4959677

NO	TAG	PACKAGE #	LOCATION	SWITCHES		OPTION	FANS CONTROLLED					
				LOCATION	QUANTITY		FAN TAG	TYPE	Φ	HP	VOLTS	FLA
1	EP1	SC-110110MA	WALL MOUNT IN SS BOX	01 - FACE MOUNT LEFT SIDE OF HOOD HOOD # 1	1 LIGHT 1 FAN	SMART CONTROLS THERMOSTATIC CONTROL W/ RELAY ON/OFF WITH SUPPLY	KEF1	EXHAUST	1	0.333	115	4.3



AIR BALANCE SCHEDULE			
TAG	ROOMS SERVED	O.A. CFM	EXHAUST CFM
RTU-1	KITCHEN	+ 300	-
RTU-2	KITCHEN	+ 400	-
EF-1 (Toilet)	KITCHEN	-	- 140
EF-2 (Hood)	KITCHEN	-	- 560
NET		0 CFM	

KITCHEN TO MAINTAIN A SLIGHTLY NEGATIVE PRESSURE. OVERALL BUILDING PRESSURE TO BE BETWEEN -0.02" TO +0.02" WC PER IMC COMMENTARY RECOMMENDATIONS

REVISIONS

DESCRIPTION	DATE

CAPTIVEAIRE

Air Solutions

1329 East Kemper Rd., Ste. 4210, Cincinnati, OH, 45216 PHONE: (513) 860-5555 EMAIL: reg12@captivaire.com

Shell Station rv1
CINCINNATI, OH, 45202

DATE: 7/7/2021
DWG.#: 4959677
DRAWN BY: jcirilli
SCALE: 3/4" = 1'-0"
MASTER DRAWING

SHEET NO.
1

EXHAUST FAN INFORMATION – JOB#4959677

FAN UNIT NO	TAG	QTY	FAN UNIT MODEL #	MANUFACTURER	CFM	ESP	RPM	MOTOR ENCL	HP	BHP	PHASE	VOLT	FLA	DISCHARGE VELOCITY	WEIGHT (LBS)	SONES
1	KEF1	1	DU33HFA	CAPTIVEAIRE	560	1.000	1573	TEAD-ECM	0.333	0.2370	1	115	4.3	277 FPM	74	16.1

FAN OPTIONS

FAN UNIT NO	TAG	QTY	DESCRIPTION
1	KEF1	1	GREASE BOX.
		1	ECM WIRING PACKAGE – PWM SIGNAL FROM ECPM03 PREWIRE (TELCO MOTOR), CCW ROTATION.
		1	FAN BASE CERAMIC SEAL – INSTALLED AT PLANT – FOR GREASE DUCTS.
		1	2 YEAR PARTS WARRANTY.

FAN ACCESSORIES

FAN UNIT NO	TAG	EXHAUST				SUPPLY		
		GREASE CUP	GRAVITY DAMPER	WALL MOUNT	SIDE DISCHARGE	GRAVITY DAMPER	MOTORIZED DAMPER	WALL MOUNT
1	KEF1	YES						

FAN #1 DU33HFA – EXHAUST FAN (KEF1)

FEATURES:

- DIRECT DRIVE CONSTRUCTION (NO BELTS/PULLEYS).
- ROOF MOUNTED FANS.
- RESTAURANT MODEL.
- UL705 AND UL762 AND ULC-S645
- VARIABLE SPEED CONTROL.
- INTERNAL WIRING.
- THERMAL OVERLOAD PROTECTION (SINGLE PHASE).
- HIGH HEAT OPERATION 300°F (149°C).
- GREASE CLASSIFICATION TESTING.
- NEMA 3R SAFETY DISCONNECT SWITCH.

NORMAL TEMPERATURE TEST

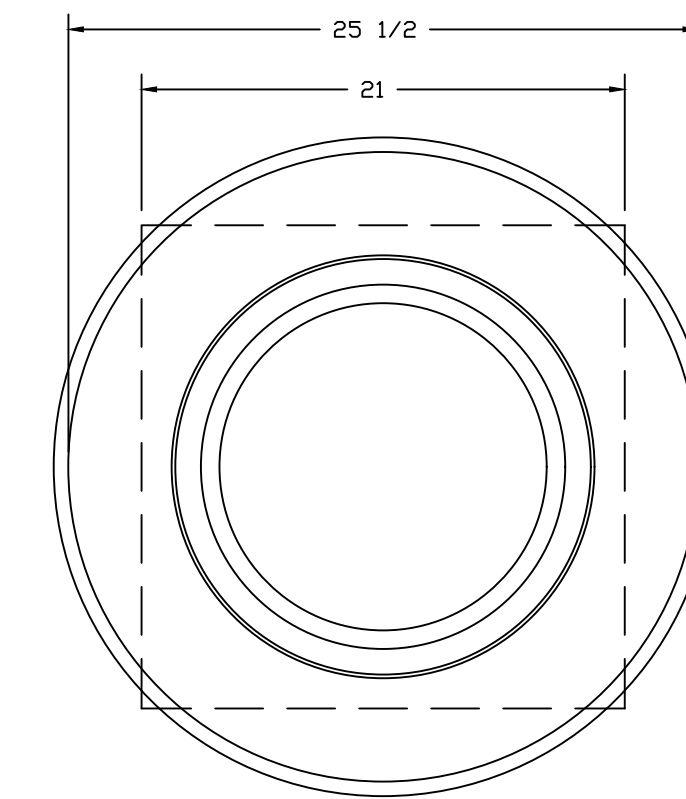
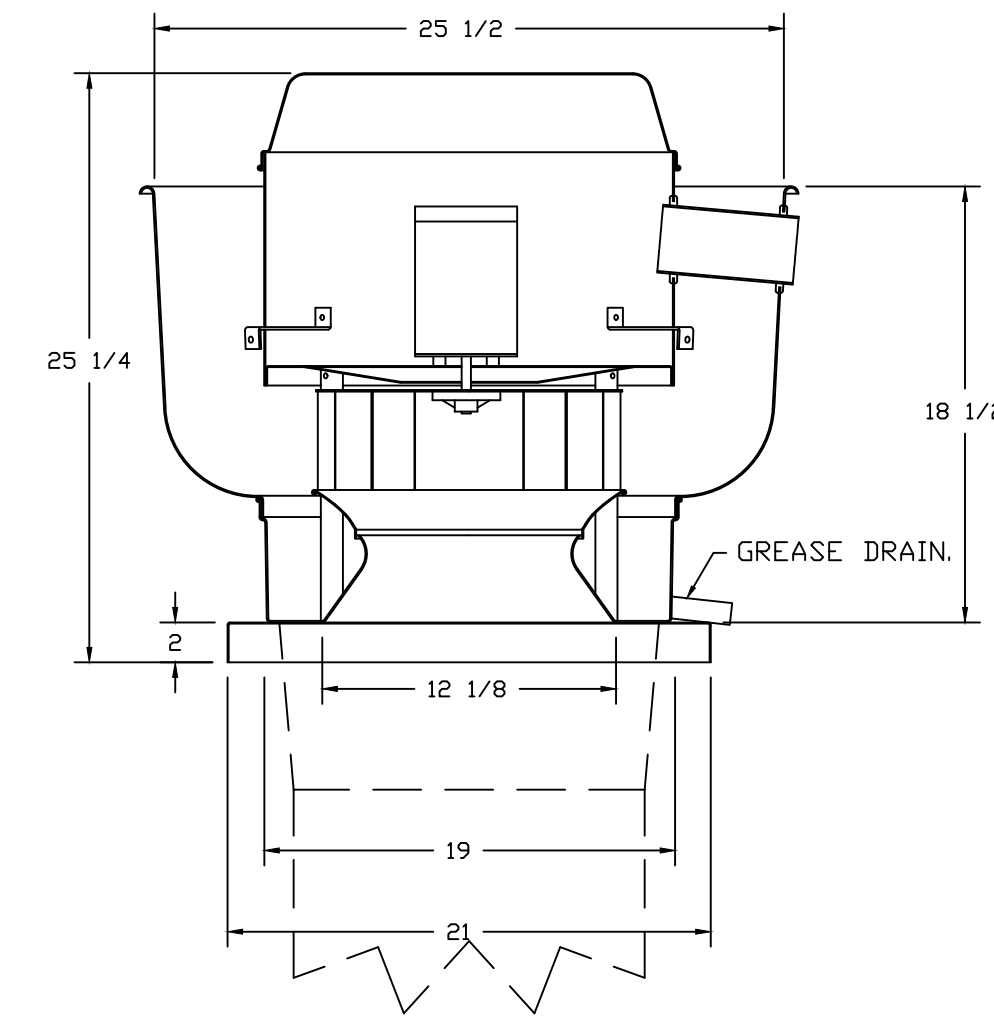
EXHAUST FAN MUST OPERATE CONTINUOUSLY WHILE EXHAUSTING AIR AT 300°F (149°C) UNTIL ALL FAN PARTS HAVE REACHED THERMAL EQUILIBRIUM, AND WITHOUT ANY DETERIORATING EFFECTS TO THE FAN WHICH WOULD CAUSE UNSAFE OPERATION.

ABNORMAL FLARE-UP TEST

EXHAUST FAN MUST OPERATE CONTINUOUSLY WHILE EXHAUSTING BURNING GREASE VAPORS AT 600°F (316°C) FOR A PERIOD OF 15 MINUTES WITHOUT THE FAN BECOMING DAMAGED TO ANY EXTENT THAT COULD CAUSE AN UNSAFE CONDITION.

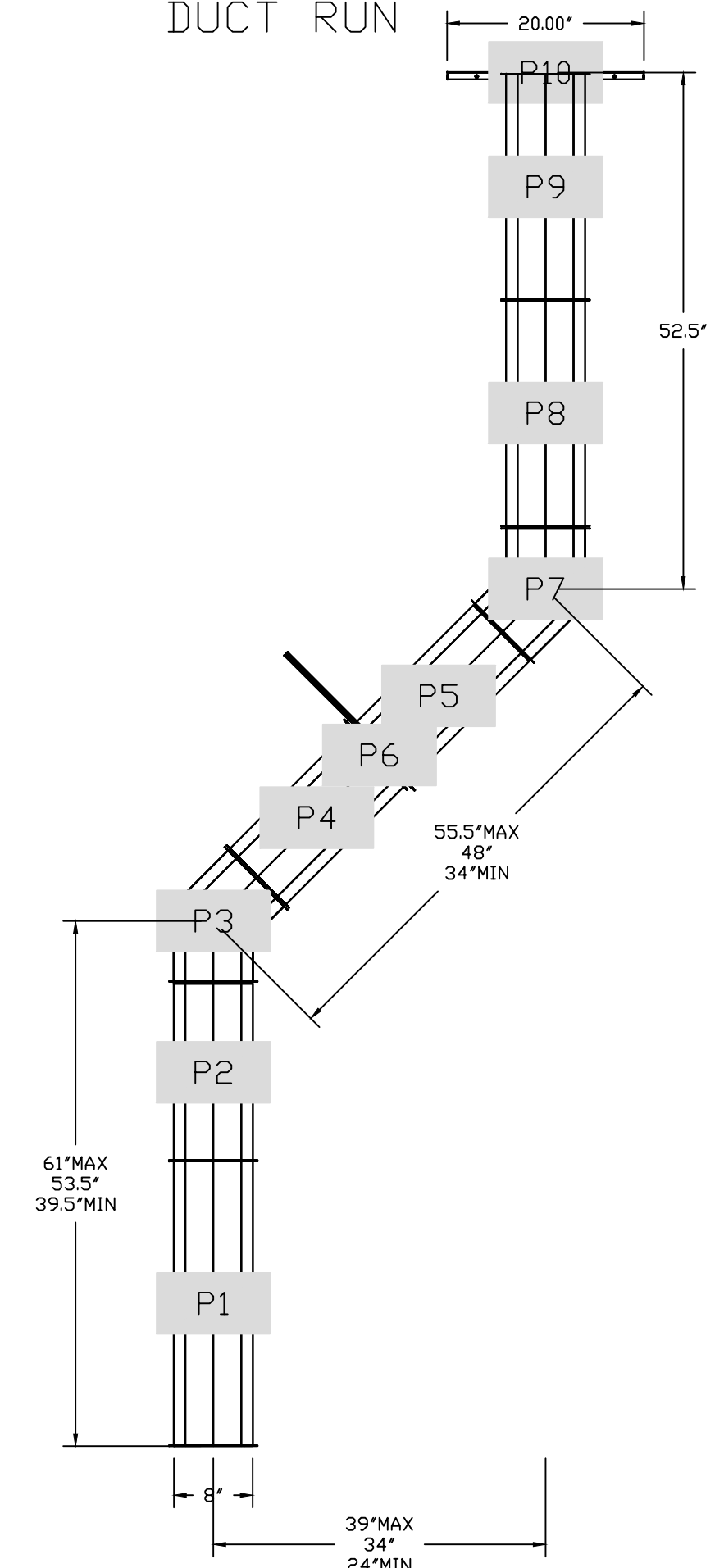
OPTIONS

GREASE BOX.
ECM WIRING PACKAGE – PWM SIGNAL FROM ECPM03 PREWIRE (TELCO MOTOR), CCW ROTATION.
FAN BASE CERAMIC SEAL – INSTALLED AT PLANT – FOR GREASE DUCTS.
2 YEAR PARTS WARRANTY.

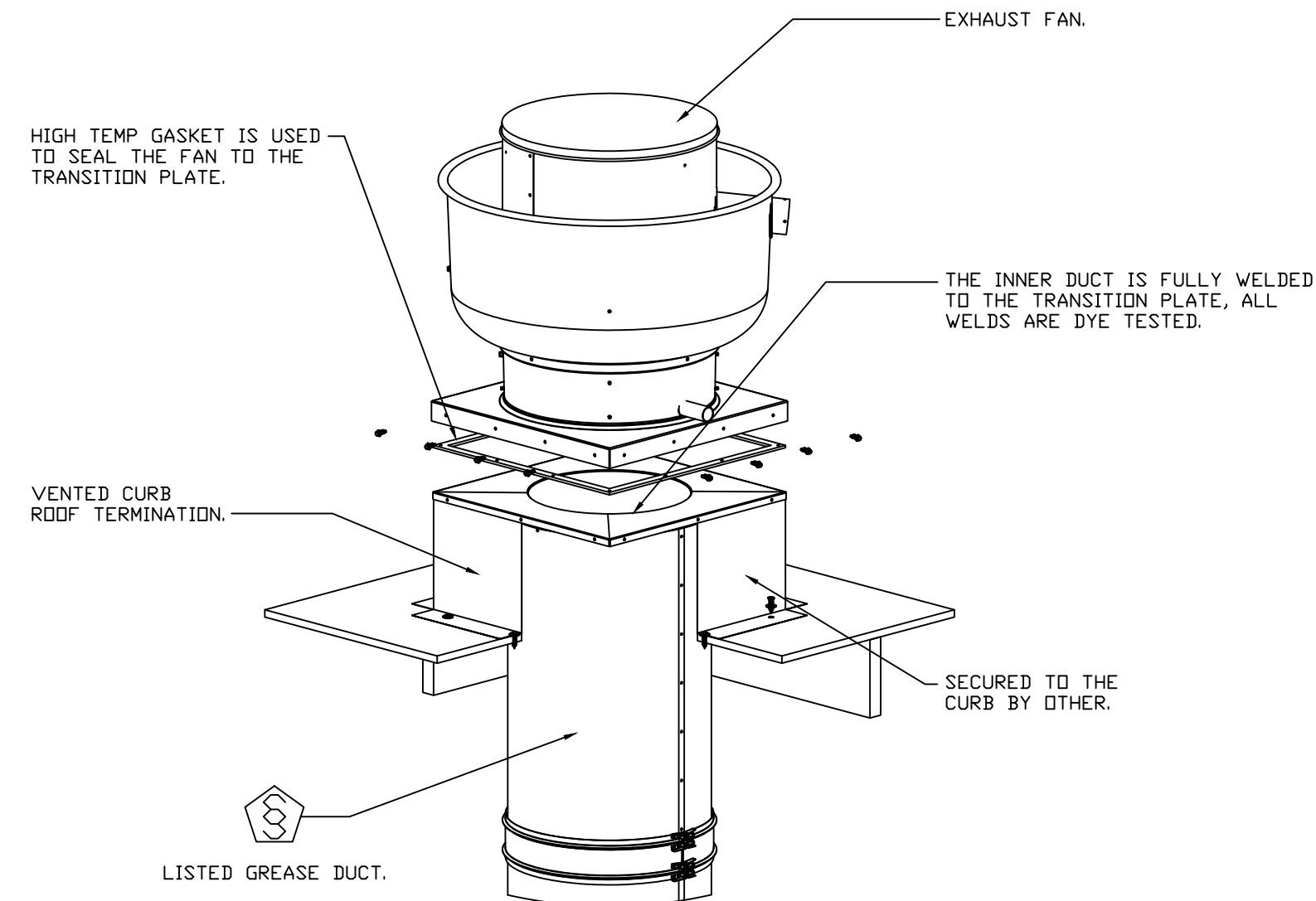
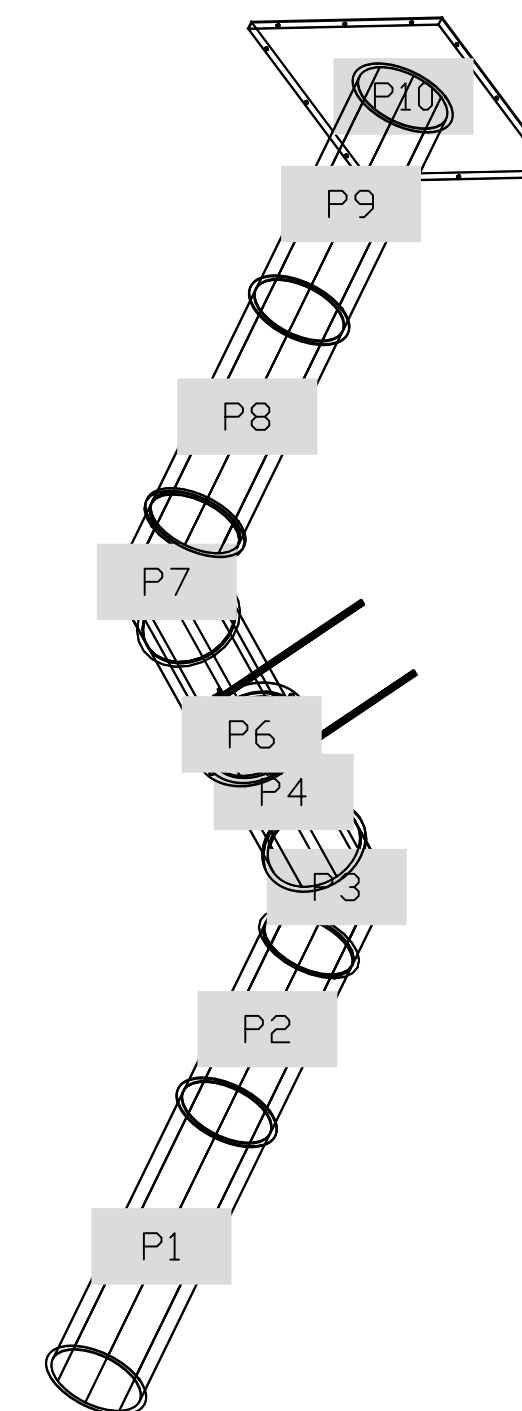


TOP VIEW

DUCTWORK #1 SIDE VIEW
DUCT RUN



DUCTWORK #1 SE VIEW
DUCT RUN



DUCTWORK #1 PARTS – JOB#4959677 DUCT RUN

TAG	PART #	CFM	GPM	ZONE	COVERED BY	SP	WEIGHT	VELOCITY	QTY	DESCRIPTION
P1	DW0829LT	560				-0.0191	7.82	1604.28	1	SINGLE WALL DUCT 8" DIAMETER, 29" LONG, FLANGE AT BOTH ENDS. STAINLESS STEEL.
P2	DW0830AJDKIT	560				-0.0119	10.21	1604.28	1	SINGLE WALL DUCT ADJUSTABLE, 8" DIAMETER, 29.5" LONG, FLANGE AT ONE END WITH A 8" ADJUSTABLE COLLAR – STAINLESS STEEL.
P3	DW0845ASY	560				-0.0288	3.48	1604.28	1	SINGLE WALL DUCT 45 DEGREE ELBOW, 8" DUCT, ASSEMBLY.
P4	DW0817LT	560				-0.0112	4.68	1604.28	1	SINGLE WALL DUCT 8" DIAMETER, 17" LONG, FLANGE AT BOTH ENDS. STAINLESS STEEL.
P5	DW0830AJDKIT	560				-0.0118	10.21	1604.28	1	SINGLE WALL DUCT ADJUSTABLE, 8" DIAMETER, 29.5" LONG, FLANGE AT ONE END WITH A 8" ADJUSTABLE COLLAR – STAINLESS STEEL.
P6	DW08SUBRASY						2.34		1	DUCT SUPPORT BRACKET KIT, 8" DUCT, USED FOR HANGING DUCT. 12 GA STEEL, CLEAR ZINC COATING. – 2 RINGS, 4 BRACKETS, & HARDWARE BAG 2.
P7	DW0845ASY	560				-0.0336	3.48	1604.28	1	SINGLE WALL DUCT 45 DEGREE ELBOW, 8" DUCT, ASSEMBLY.
P8	DW0823LT	560				-0.015	6.24	1604.28	1	SINGLE WALL DUCT 8" DIAMETER, 23" LONG, FLANGE AT BOTH ENDS. STAINLESS STEEL.
P9	DW0823LT	560				-0.015	6.24	1604.28	1	SINGLE WALL DUCT 8" DIAMETER, 23" LONG, FLANGE AT BOTH ENDS. STAINLESS STEEL.
P10	DW1908TPDBEX	560					7.50	1604.28	1	DUCT TO CURB TRANSITION 3/4" DOWN TURN, 19-1/2" CURB TO 8" DUCT, 16 GA ALUMINIZED STEEL. NON-STANDARD PART. FOR USE WITH EXHAUST FANS.
	3M-2000PLUS						0.80		2	DUCT – 3M FIRE BARRIER 2000 PLUS SILICONE – USED AS SEALANT TO SEAL DUCT JOINTS.
	DW08CLASY						0.70		8	DUCT "V" CLAMP, 8" DUCT WITH NEW DESIGN 14 GA BRACKETS, ASSEMBLY.
TOTAL WEIGHT							69.40			

REVISIONS

DESCRIPTION	DATE

CAPTIVE
Air Solutions
www.captiveaire.com

1329 East Kemper Rd., Ste. 4210, Cincinnati, OH, 45246 PHONE: (513) 860-5555 EMAIL: reg12@captivair.com

Shell Station r.v1
CINCINNATI, OH, 45202

DATE: 7/7/2021
DWG.#: 4959677
DRAWN BY: jcirilli
SCALE: 3/4" = 1'-0"
MASTER DRAWING

SHEET NO.
2