

SUBMITTAL REVIEW COMMENTS

PROJECT Shake Shack #1352
PROJECT NO 2050003215
DATE 07/13/2021
SUBMITTAL Carrier
SUBMITTAL NO
REVIEWER AJP
HENDERSON NO M001

<input checked="" type="checkbox"/> Approved	Fabrication and/or installation may be undertaken. Approval does not authorize changes to the contract sum or contract time.
<input type="checkbox"/> Approved as Corrected	
<input type="checkbox"/> Revise and Resubmit	Fabrication and/or installation may not be undertaken. In resubmitting, limit corrections to items marked.
<input type="checkbox"/> Rejected	
<input type="checkbox"/> No Action Taken	Submittal either not required for this item or provided for information only. Contract requirements should be followed in all cases.

Review/approval neither extends nor alters any contractual obligations of the Engineer or Contractor. Checking of submittals is only for general conformance with the design concept of the project and general compliance with the information given in the contract documents. Any action shown is subject to the general requirements of the plans and specifications. Contractor is responsible for dimensions, quantities, and coordination between trades and for coordinating approved items and accepted alternates.

HENDERSON ENGINEERS, INC.

ACTION CODES

1	2	3	4	5	6
Approved	Approved as Corrected	Revise & Resubmit Items Noted	Rejected	Not Reviewed	For Information Only

(Action Item Codes 1, 2, 5 or 6 are not to be resubmitted.)

COMMENT #	ACTION CODE	DESCRIPTION	COMMENTS
1	1	RTU-1	-Carrier 48HCDE17 approved with accessories. -Electrical contractor to verify electrical MCA and MOCP.
2	1	Office Split System	-Carrier 38MARBQ and 40MBCQ approved

Note: Henderson's processing of these submittals does not relieve other members of the design and construction team from reviewing submittals for coordination, compliance and performance or reviewing submittals as outlined in the contract documents or both.



SUBMITTAL

Project

Shake Shack - 1352 - Chesterfield, MO

Date

Monday, July 12, 2021

EXCLUSIONS and/or CLARIFICATIONS:

- Quoted RTU is out of stock and lead time is 11 weeks. Lead time is subject to change prior to sale.
- Ductless units are out of stock and lead time is 130 days. Lead time is subject to change prior to sale.
- No MERV filters provided, to be provided by contractor
- Thermostats, humidistats and temp sensors not included, to be provided by contractor
- Non-fused disconnects provided for RTUs
- Liquid line filter and sight glass not provided for ductless unit
- Spring vibration isolation and all-thread hanging rods not provided for ductless unit.
- Airborne disinfection system not provided.
- Roof curbs provided.
- Please verify submittal for all units meets required staging and circuiting among other necessary design attributes

INSTALLING CONTRACTOR IS RESPONSIBLE FOR VERIFYING EQUIPMENT BEING SUPPLIED MATCHES FINAL BID DOCUMENTS and/or REPLACEMENT EQUIPMENT NEEDED FOR STORE (i.e. voltage, size, etc). Carrier will not be responsible for installation and/or removal of any incorrect units. Please report any discrepancies immediately.

Table Of Contents

Project: Shake Shack - 1352 - Chesterfield, MO
Prepared By:

07/12/2021
08:36AM

RTU-1	3
Unit Report	4
Certified Drawing.....	5
Performance Summary.....	10

RTU-1

**Tag Cover Sheet
Unit Report
Certified Drawing
Performance Report**

Unit Report For RTU-1

Project: Shake Shack - 1352 - Chesterfield, MO
 Prepared By:

07/12/2021
 08:36AM

Unit Parameters

Unit Model:..... **48HCDE17A2M5-6W2J0**
 Unit Size:.....**17 (15 Tons)**
 Volts-Phase-Hertz:..... **208-3-60**
 Heating Type:.....**Gas**
 Duct Cfg:..... **Vertical Supply / Vertical Return**
 Low Heat
 Two stage Cooling with Humidi-MiZer

Dimensions (ft. in.) & Weight (lb.) ***

Unit Length:..... **10' 7.875"**
 Unit Width:..... **7' 2.375"**
 Unit Height: **4' 1.375"**
 *** Total Operating Weight: **2723** lb

*** Weights and Dimensions are approximate. Weight does not include unit packaging. Approximate dimensions are provided primarily for shipping purposes. For exact dimensions and weights, refer to appropriate product data catalog.

Lines and Filters

Gas Line Size:..... **3/4**
 Condensate Drain Line Size: **3/4**
 Return Air Filter Type:..... **Throwaway**
 Return Air Filter Quantity:..... **6**
 Return Air Filter Size:.....**20 x 25 x 2**

Unit Configuration

Medium Static Option - Vertical Models
 Al/Cu - Al/Cu - Louvered Hail Guard
 Electromechanical Controls w/W7220 Econo Controller
 Enthalpy Ultra Low Leak Econo w/Baro Relief
 Powered Convenience Outlet
 Non-Fused Disconnect
 Standard Packaging
 2-Speed indoor fan motor controlled by VFD
 Humidi-MiZer™ Adaptive Dehumidification System

Warranty Information

1-Year parts(std.)
 5-Year compressor parts(std.)
 10-Year heat exchanger - Aluminized(std.)

No optional warranties were selected.

NOTE: Please see Warranty Catalog 500-089 for explanation of policies and ordering methods.

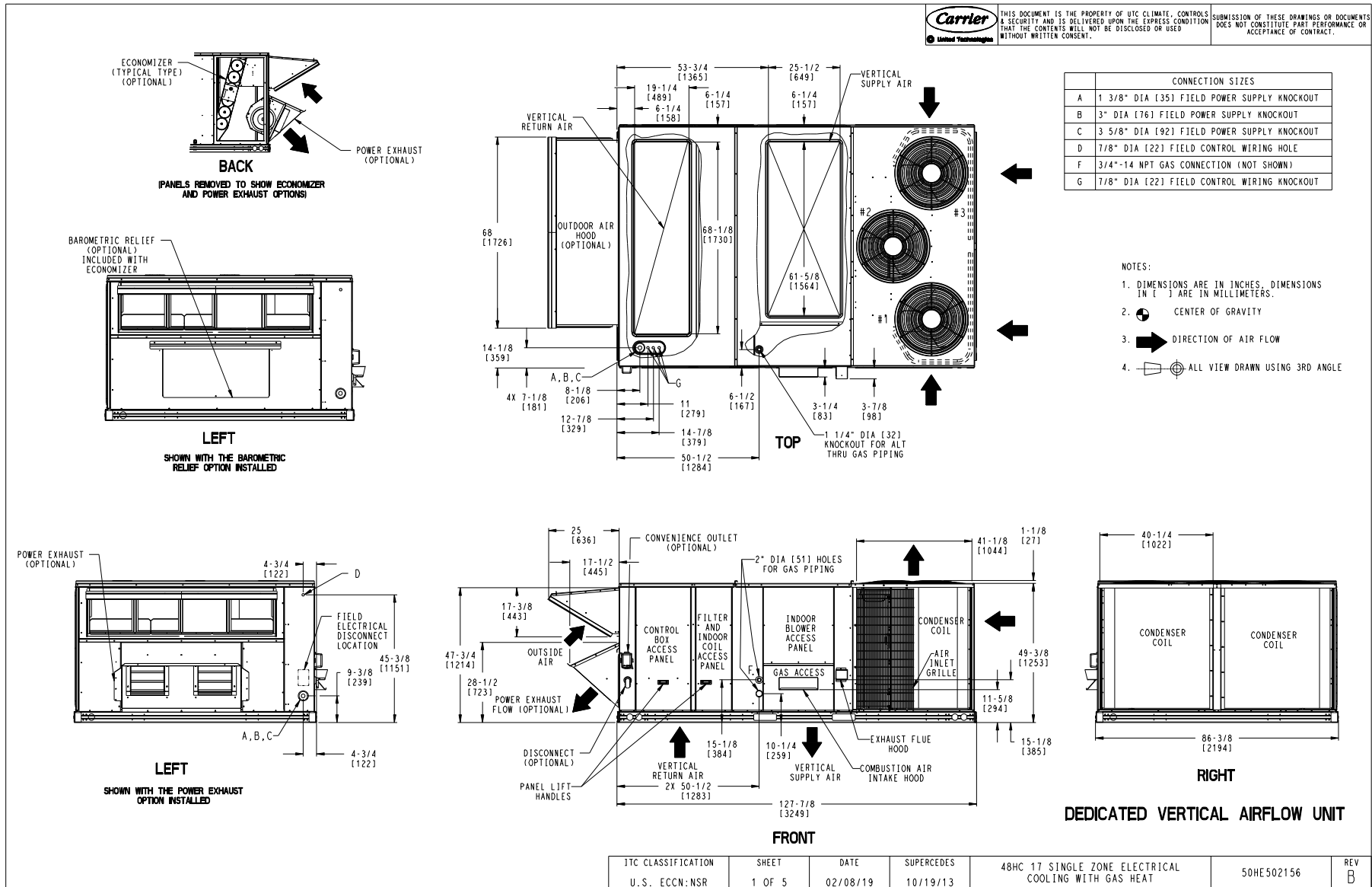
Ordering Information

Part Number	Description	Quantity
48HCDE17A2M5-6W2J0	Rooftop Unit	1
	Base Unit	
	Medium Static Option - Vertical Models	
	Al/Cu - Al/Cu - Louvered Hail Guard	
	Powered Convenience Outlet	
	Humidi-MiZer™ Adaptive Dehumidification System	
	Ultra Low leak Enty Econo X with baro relief, W7220 control. Meets Calif. Title 24 FDD & Leak Rates	
	2 Speed Fan Controller (VFD) and Non-Fused Disconnect	
	Accessories	
CRRFCURB046A00	24-inch Roof Curb	1
--HH--57AC-081	Enthalpy Control for W7220 Controller	1

Certified Drawing for RTU-1

Project: Shake Shack - 1352 - Chesterfield, MO
 Prepared By:

07/12/2021
 08:36AM



Certified Drawing for RTU-1

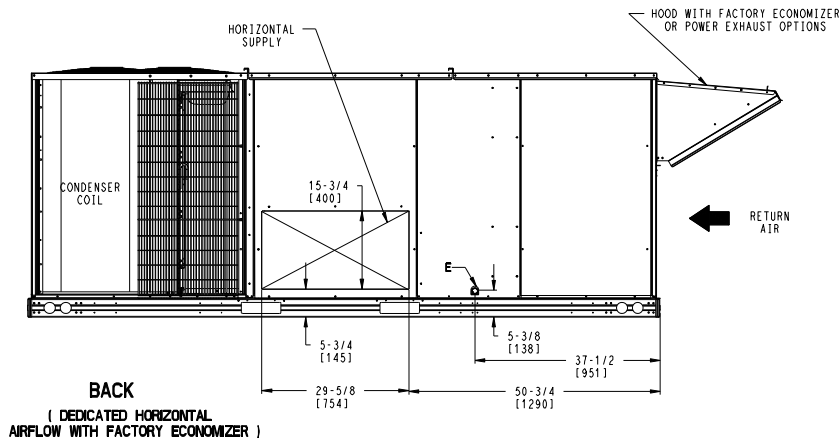
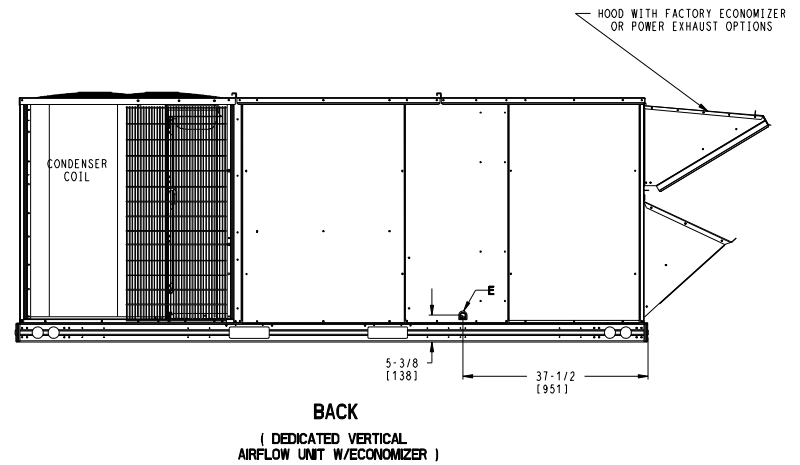
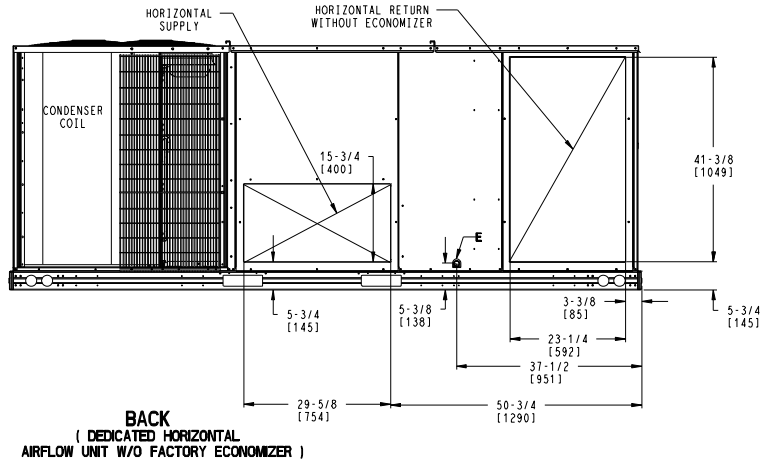
Project: Shake Shack - 1352 - Chesterfield, MO
 Prepared By:

07/12/2021
 08:36AM

CONNECTION SIZES	
E	3/4"-14 NPT CONDENSATE DRAIN

THIS DOCUMENT IS THE PROPERTY OF UTC CLIMATE CONTROLS & SECURITY AND IS DELIVERED UPON THE EXPRESS CONDITION THAT THE CONTENTS WILL NOT BE DISCLOSED OR USED WITHOUT WRITTEN CONSENT.

 SUBMISSION OF THESE DRAWINGS OR DOCUMENTS DOES NOT CONSTITUTE PART PERFORMANCE OR ACCEPTANCE OF CONTRACT.



ITC CLASSIFICATION	SHEET	DATE	SUPERCEDES	48HC 17 SINGLE ZONE ELECTRICAL COOLING WITH GAS HEAT	50HE502156	REV
U.S. ECCN: NSR	3 OF 5	02/08/19	10/19/13			B

Certified Drawing for RTU-1

Project: Shake Shack - 1352 - Chesterfield, MO
 Prepared By:

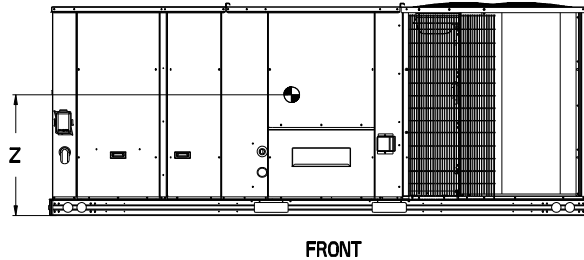
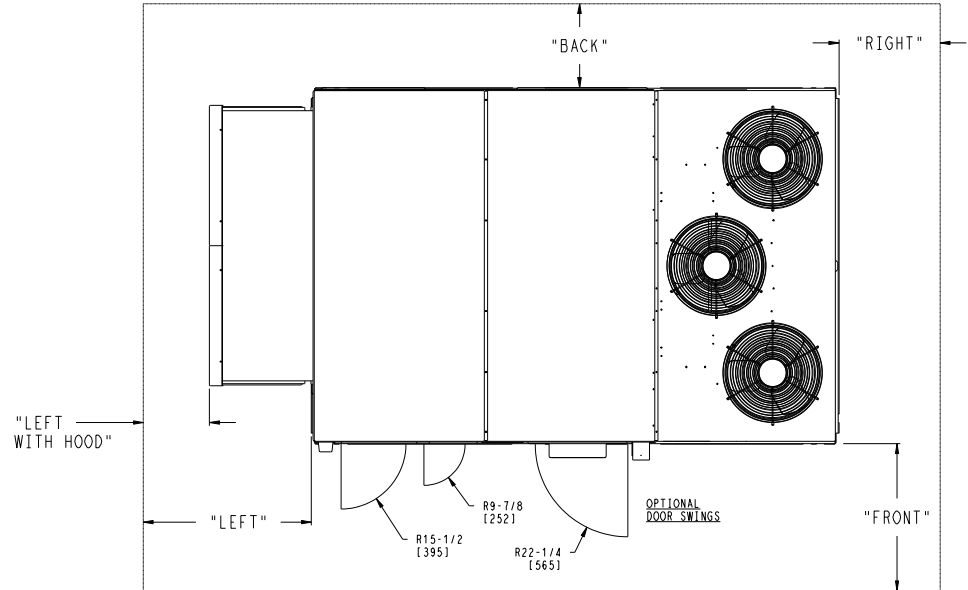
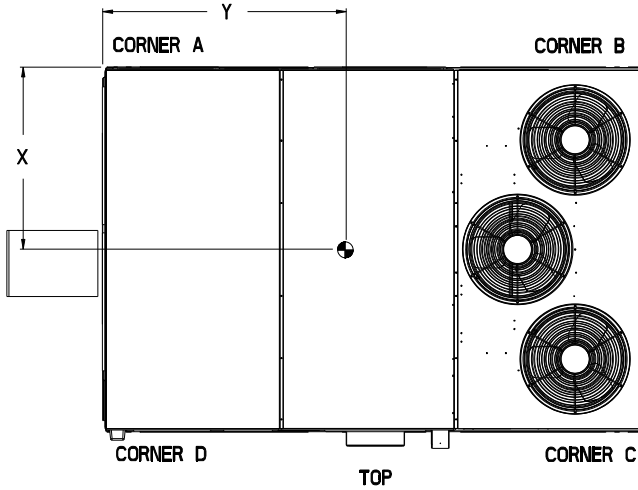
07/12/2021
 08:36AM

UNIT	STD UNIT WEIGHT *		CORNER WEIGHT (A)		CORNER WEIGHT (B)		CORNER WEIGHT (C)		CORNER WEIGHT (D)		C.G.		
	LBS.	KG.	LBS.	KG.	LBS.	KG.	LBS.	KG.	LBS.	KG.	X	Y	Z
48HC17	1892	860	401	182	449	204	565	257	505	230	48 [1219]	67 3/8 [1711]	16 1/2 [419]

THIS DOCUMENT IS THE PROPERTY OF UTC CLIMATE CONTROLS A SECURITY AND IS DELIVERED UPON THE EXPRESS CONDITION THAT THE CONTENTS WILL NOT BE DISCLOSED OR USED WITHOUT WRITTEN CONSENT.

 SUBMISSION OF THESE DRAWINGS OR DOCUMENTS DOES NOT CONSTITUTE PART PERFORMANCE OR ACCEPTANCE OF CONTRACT.

* STANDARD UNIT WEIGHT IS WITH LOW GAS HEAT AND WITHOUT PACKAGING. FOR OTHER OPTIONS AND ACCESSORIES, REFER TO THE PRODUCT DATA CATALOG.



NOTES:

1. CLEARANCE ABOVE THE UNIT TO BE 72"
2. FOR ALL MINIMUM CLEARANCES LOCAL CODES OR JURISDICTIONS MAY PREVAIL.


SURFACE	CLEARANCE		OPERATING CLEARANCE
	SERVICE WITH CONDUCTIVE BARRIER	SERVICE WITH NONCONDUCTIVE BARRIER	
FRONT	48 [1219mm]	36 [914mm]	18 [457mm]
LEFT	48 [1219mm]	42 [1067mm]	18 [457mm]
BACK	42 [1067mm]	36 [914mm]	18 [457mm]
LEFT WITH HOOD	36 [914mm]	36 [914mm]	18 [457mm]
RIGHT	36 [914mm]	36 [914mm]	18 [457mm]
TOP	72 [1829mm]	72 [1829mm]	72 [1829mm]

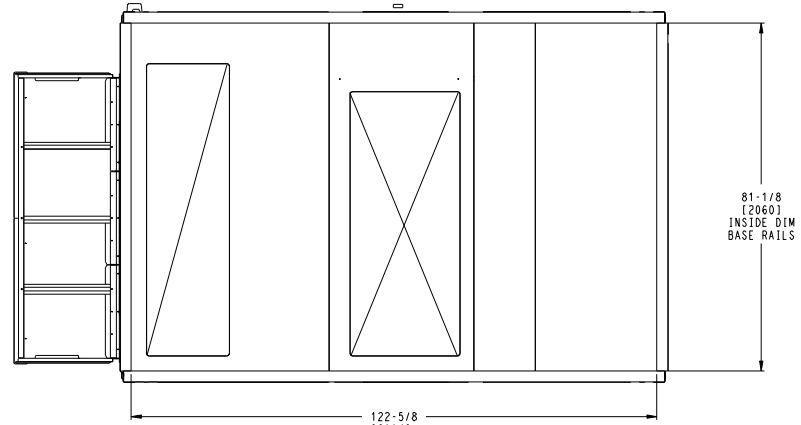
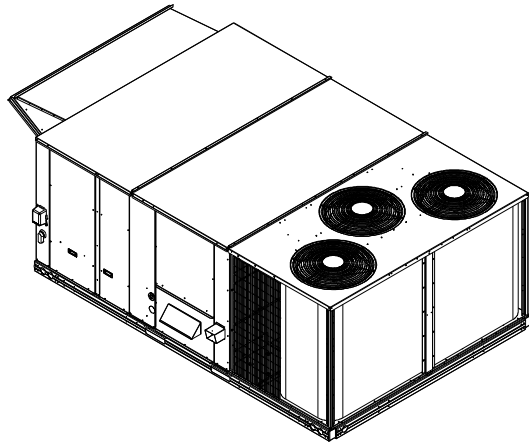
ITC CLASSIFICATION	SHEET	DATE	SUPERCEDES	48HC 17 SINGLE ZONE ELECTRICAL COOLING WITH GAS HEAT	50HE502156	REV
U.S. ECCN:NSR	4 OF 5	02/08/19	10/19/13			B

Certified Drawing for RTU-1

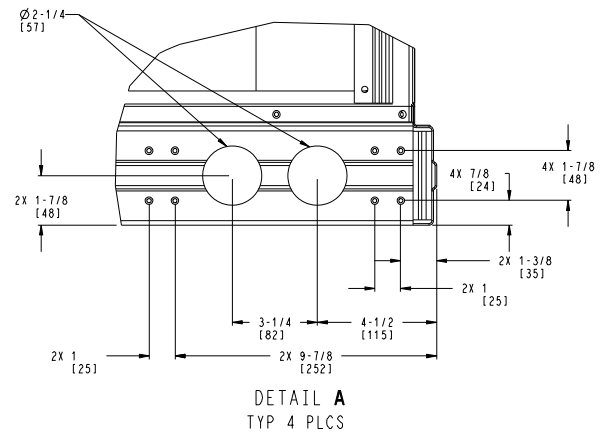
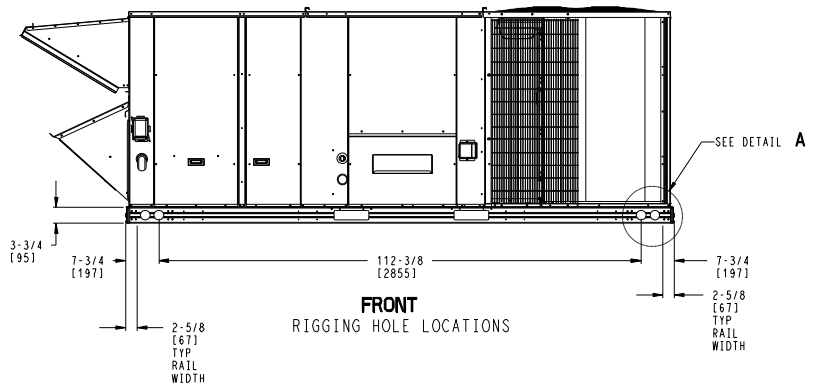
Project: Shake Shack - 1352 - Chesterfield, MO
 Prepared By:

07/12/2021
 08:36AM

 United Technologies	THIS DOCUMENT IS THE PROPERTY OF UTC CLIMATE CONTROLS & SECURITY AND IS DELIVERED UPON THE EXPRESS CONDITION THAT THE CONTENTS WILL NOT BE DISCLOSED OR USED WITHOUT WRITTEN CONSENT.	SUBMISSION OF THESE DRAWINGS OR DOCUMENTS DOES NOT CONSTITUTE PART PERFORMANCE OR ACCEPTANCE OF CONTRACT.
--	---	---



BOTTOM
INSIDE BASERAIL DIMENSIONS

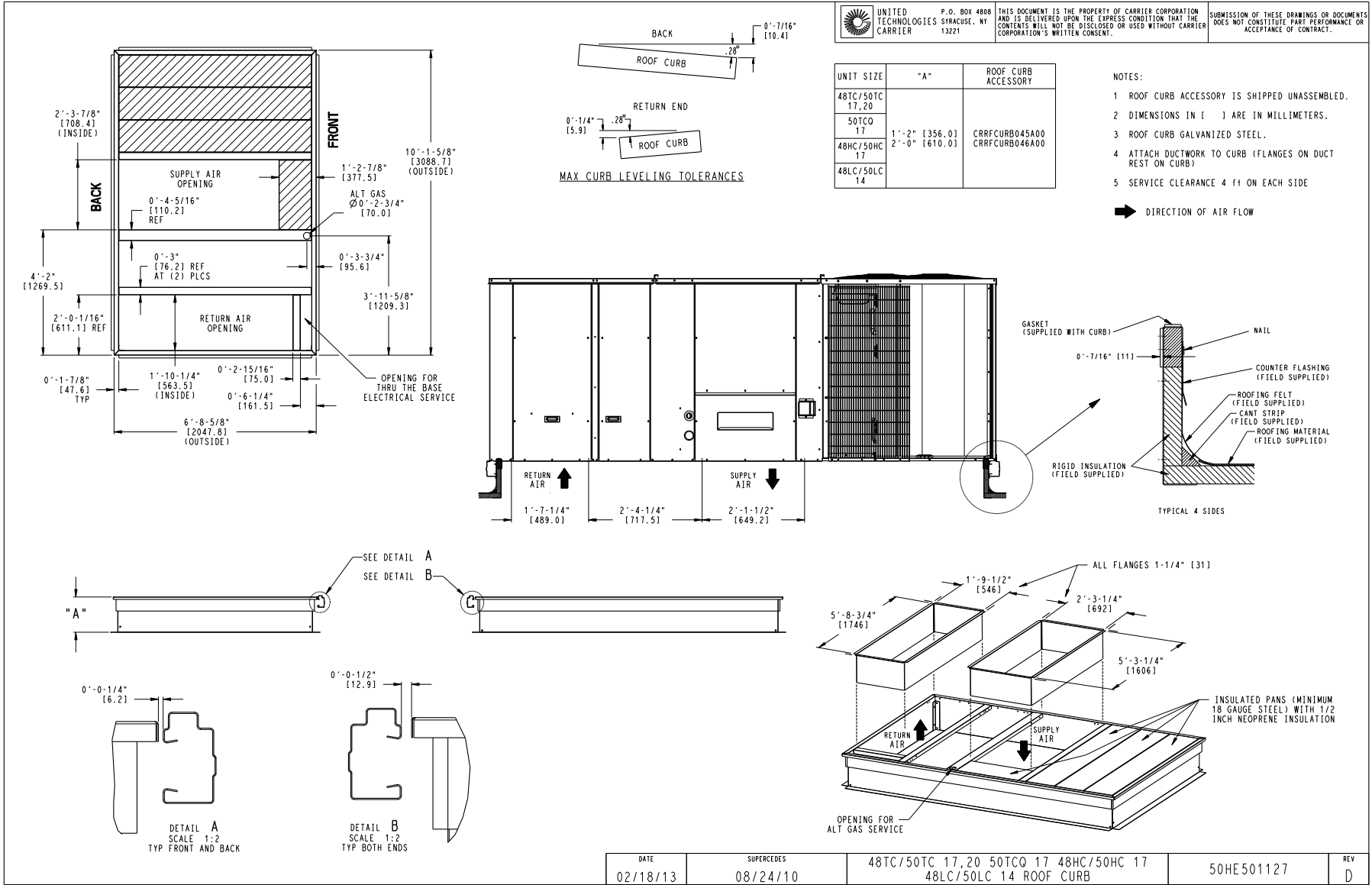


ITC CLASSIFICATION	SHEET	DATE	SUPERCEDES	48HC 17 SINGLE ZONE ELECTRICAL COOLING WITH GAS HEAT	50HE502156	REV
U.S. ECCN: NSR	5 OF 5	02/08/19	10/19/13			B

Certified Drawing for RTU-1

Project: Shake Shack - 1352 - Chesterfield, MO
 Prepared By:

07/12/2011
 08:36AM



Performance Summary For RTU-1

Project: Shake Shack - 1352 - Chesterfield, MO
Prepared By:

07/12/2021
08:36AM

Part Number:48HCDE17A2M5-6W2J0

ARI EER: 12.00
IEER (Max Cooling at Normal Cooling Design Mode): 13.5

Base Unit Dimensions

Unit Length: 127.9 in
Unit Width: 86.4 in
Unit Height: 49.4 in

Operating Weight

Base Unit Weight: 1892 lb
Two stage Cooling with Humidi-MiZer: 110 lb
Medium Static Option - Vertical Models: 5 lb
Al/Cu - Al/Cu - Louvered Hail Guard: 60 lb
Enthalpy Ultra Low Leak Econo w/Baro Relief: 246 lb
Powered Convenience Outlet: 35 lb
2 Speed Fan Controller (VFD) and Non-Fused Disconnect: 35 lb

Accessories

24-inch Roof Curb: 340 lb

Total Operating Weight: 2723 lb

Unit

Unit Voltage-Phase-Hertz: 208-3-60
Air Discharge: Vertical
Fan Drive Type: Belt
Actual Airflow: 4500 CFM
Site Altitude: 0 ft

Cooling Performance

Condenser Entering Air DB: 100.0 F
Evaporator Entering Air DB: 80.3 F
Evaporator Entering Air WB: 68.2 F
Entering Air Enthalpy: 32.41 BTU/lb
Evaporator Leaving Air DB: 56.9 F
Evaporator Leaving Air WB: 56.0 F
Evaporator Leaving Air Enthalpy: 23.79 BTU/lb
Gross Cooling Capacity: 174.51 MBH
Gross Sensible Capacity: 113.76 MBH
Compressor Power Input: 13.07 kW
Coil Bypass Factor: 0.066

Heating Performance

Heating Airflow: 4500 CFM
Entering Air Temp: 52.9 F
Leaving Air Temp: 89.5 F
Gas Heating Input Capacity: 176.0 / 220.0 MBH
Gas Heating Output Capacity: 142.0 / 178.0 MBH
Temperature Rise: 36.6 F
Thermal Efficiency (%): 81.0

Supply Fan

External Static Pressure: 0.60 in wg
Options / Accessories Static Pressure
Humidi-MiZer Dehumidification System: 0.05 in wg
Economizer: 0.05 in wg
Total Application Static (ESP + Unit Opts/Acc.): 0.69 in wg
Fan RPM: 686
Fan Power: 1.59 BHP
NOTE: Selected IFM RPM Range: 679 - 863

Performance Summary For RTU-1

Project: Shake Shack - 1352 - Chesterfield, MO
 Prepared By:

07/12/2021
 08:36AM

NOTE: At the selected supply CFM value, a saturated suction temperature of less than 32 F (0 C) is possible if running less than 62 F (16.7 C) ambient. This implies a slight risk of freezing the evaporator coil during operation. To avoid this slight risk, it is suggested to re-program the VFD 'low fan speed' to at least 3380 cfm using the accessory VFD display kit.

Electrical Data

Voltage Range:	187 - 253
Compressor #1 RLA:	25
Compressor #1 LRA:	164
Compressor #2 RLA:	25
Compressor #2 LRA:	164
Indoor Fan Motor Type:	MED
Indoor Fan Motor FLA:	10.8
Combustion Fan Motor FLA (ea):	0.52
Power Supply MCA:	76.4
Power Supply MOCP (Fuse or HACR):	100
Disconnect Size FLA:	81
Disconnect Size LRA:	419
Electrical Convenience Outlet FLA (based on unit line voltage):	4.8
Outdoor Fan [Qty / FLA (ea)]:	3 / 1.5

NOTE: Convenience outlet must be field connected to the line/load side of the unit disconnect per local code.

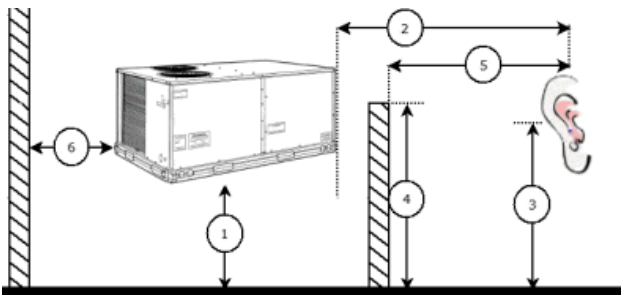
Control Panel SCCR: 5kA RMS at Rated Symmetrical Voltage

Acoustics

Sound Rating:	84.0 db
Sound Power Levels, db re 10E-12 Watts	

	Discharge	Inlet	Outdoor
63 Hz	85.8	85.4	92.2
125 Hz	78.8	72.6	83.9
250 Hz	71.1	66.7	80.4
500 Hz	70.0	59.4	81.8
1000 Hz	63.6	53.1	78.7
2000 Hz	62.6	47.8	76.5
4000 Hz	63.7	44.4	72.2
8000 Hz	52.5	34.6	65.4
A-Weighted	72.4	64.3	84.1

Advanced Acoustics



Advanced Acoustics Parameters

1. Unit height above ground:	30.0 ft
2. Horizontal distance from unit to receiver:	50.0 ft
3. Receiver height above ground:	5.7 ft
4. Height of obstruction:	0.0 ft

Performance Summary For RTU-1

Project: Shake Shack - 1352 - Chesterfield, MO

07/12/2021

Prepared By:

08:36AM

5. Horizontal distance from obstruction to receiver: **.0.0** ft
6. Horizontal distance from unit to obstruction:**0.0** ft

Detailed Acoustics Information

Octave Band Center Freq. Hz	63	125	250	500	1k	2k	4k	8k	Overall
A	92.2	83.9	80.4	81.8	78.7	76.5	72.2	65.4	93.6 Lw
B	66.0	67.8	71.8	78.6	78.7	77.7	73.2	64.3	84.1 LwA
C	59.8	51.5	48.0	49.4	46.3	44.1	39.8	33.0	61.2 Lp
D	33.6	35.4	39.4	46.2	46.3	45.3	40.8	31.9	51.7 LpA

Legend

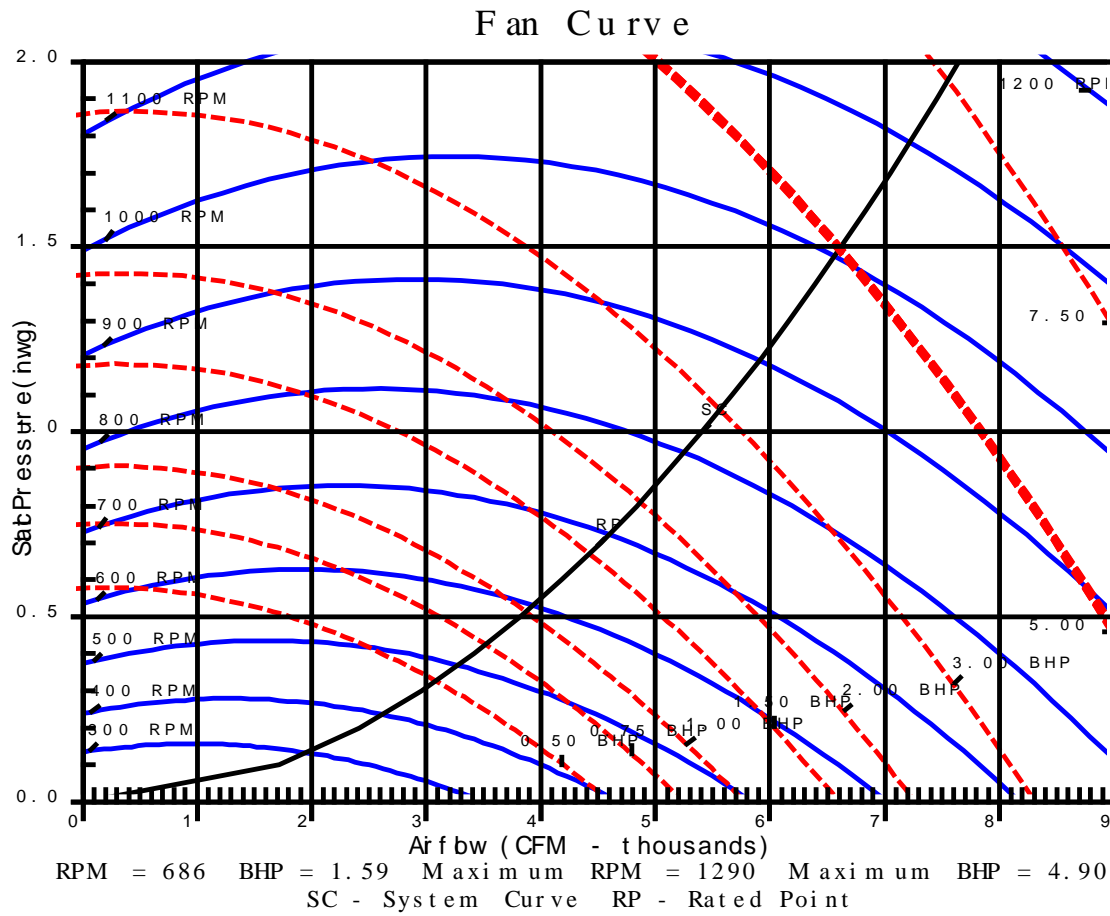
- A Sound Power Levels at Unit's Acoustic Center, Lw
- B A-Weighted Sound Power Levels at Unit's Acoustic Center, LwA
- C Sound Pressure Levels at Specific Distance from Unit, Lp
- D A-Weighted Sound Pressure Levels at Specific Distance from Unit, LpA

Calculation methods used in this program are patterned after the ASHRAE Guide; other ASHRAE Publications and the AHRI Acoustical Standards. While a very significant effort has been made to insure the technical accuracy of this program, it is assumed that the user is knowledgeable in the art of system sound estimation and is aware of the tolerances involved in real world acoustical estimation. This program makes certain assumptions as to the dominant sound sources and sound paths which may not always be appropriate to the real system being estimated. Because of this, no assurances can be offered that this software will always generate an accurate sound prediction from user supplied input data. If in doubt about the estimation of expected sound levels in a space, an Acoustical Engineer or a person with sound prediction expertise should be consulted.

Performance Summary For RTU-1

Project: Shake Shack - 1352 - Chesterfield, MO
 Prepared By:

07/12/2021
 08:36AM



Outdoor Unit Single Zone Heat Pump Ductless System



Outdoor Model: 38MARBQ18AA3

Submittal Data

Turn to the experts

Job Data:

Location:

Buyer: Buyer P.O. #:

Carrier #:

Unit Number:

Model Number:

Performance Data Certified By:

Date:



STANDARD FEATURES

- Variable Speed (Inverter)
- Factory installed Base Pan Heater
- Factory installed Crankcase Heater
- Low Voltage Controls
- Auto-Restart function
- Condenser High Temp Protection
- Modes: Cool, Heat, Dry, Fan, Auto
- Quiet operation
- Anti-corrosive fin coating

LIMITED WARRANTY*

- 10 year limited to original purchaser on compressor and parts upon timely registration, otherwise 5 years
 - *For residential applications.
- See warranty for full details.



NOTE: Images for illustration purposes only. Actual models may be slightly different.

System	Size	18	
	Outdoor Model	38MARBQ18AA3	
Electrical	Voltage, Phase, Cycle	V/Ph/Hz	208/230-1-60
	MCA	A.	16
	MOCP - Fuse Rating	A.	25
Operating Range	Cooling Outdoor DB Min - Max	°F(°C)	-22~122 (-30~50)
	Heating Outdoor DB Min - Max	°F(°C)	-22~86 (-30~30)
Piping	Total Piping Length	ft (m)	98 (30)
	Piping Lift ¹	ft (m)	65 (20)
	Pipe Connection Size - Liquid	in (mm)	1/4 (6.35)
	Pipe Connection Size - Suction	in (mm)	1/2 (12.7)
Refrigerant	Refrigerant Type	R410A	
	Metering Device	EEV	
	Charge	lbs (kg)	4.08 (1.85)

* Condensing unit above or below indoor unit
For Compatibility See Product Data

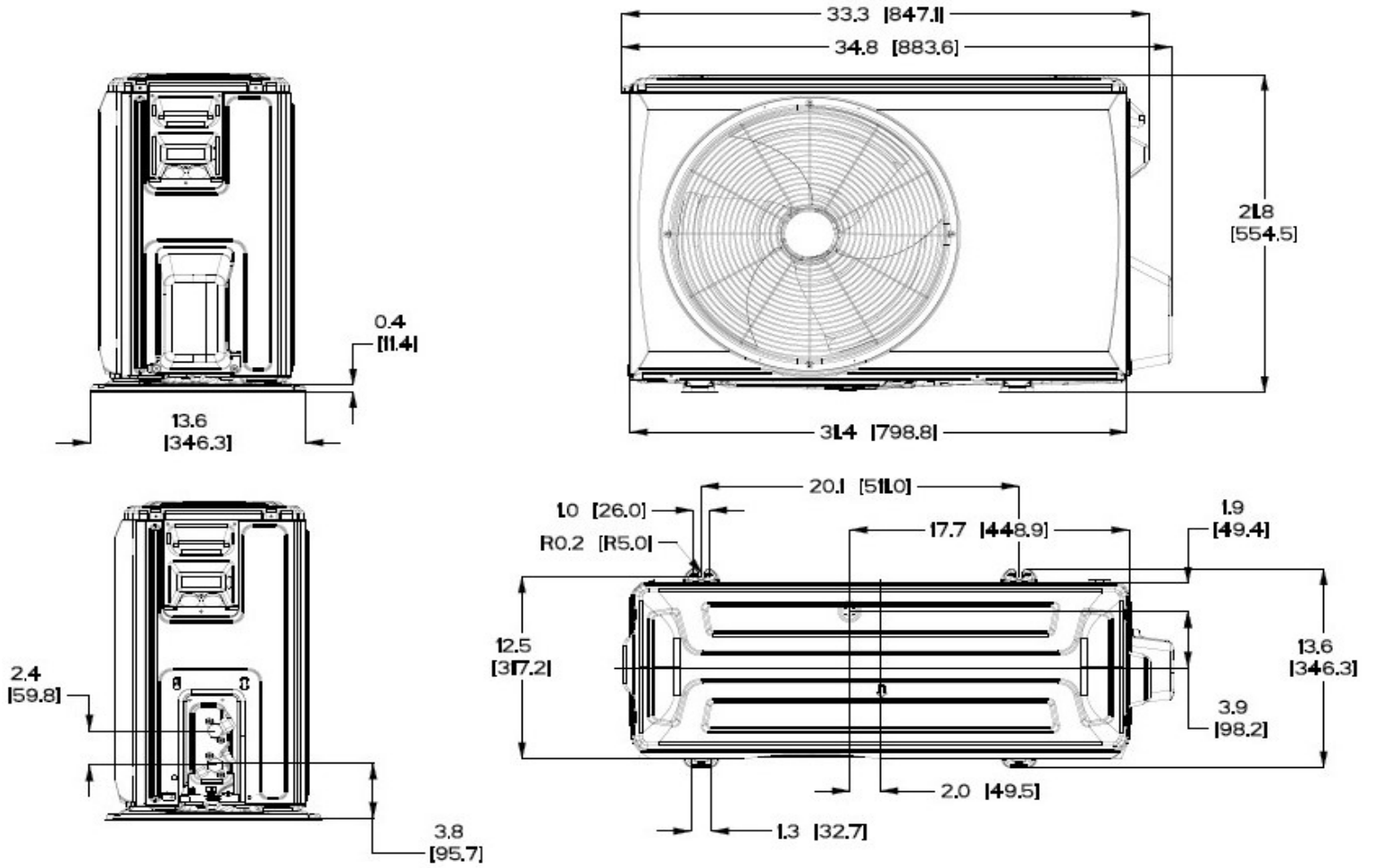
Outdoor Coil	Face Area	Sq. Ft.	5.9
	No. Rows	2	
	Fins per inch	20	
	Circuits	6	
Compressor	Type	Rotary Inverter	
	Model	KTM240D43UKT	
	Oil Type	VG74	
	Oil Charge	Fl. Oz.	21.0
	Rated Current	RLA	14.3
	Outdoor	Unit Width	in (mm)
Unit Height		in (mm)	26.50 (673)
Unit Depth		in (mm)	13.46 (342)
Net Weight		lbs (kg)	100.97 (45.8)
Airflow		CFM	1,765
	Sound Pressure	dB(A)	59.0

Performance

High Wall	Indoor Model		40MAHBQ18XA3
	Energy Star		YES
	Cooling Rated Capacity	Btu/h	18,000
	Cooling Cap. Range Min - Max	Btu/h	8,870~19,400
	SEER		21.5
	EER		12.5
	Heating Rated Capacity (47°F)	Btu/h	18,000
	Heating Rated Capacity (17°F)	Btu/h	10,800
	Heating Maximum Capacity (17°F)	Btu/h	14,000
	Heating Maximum Capacity (5°F)	Btu/h	18,000
	Heating Cap. Range Min - Max	Btu/h	8,400~19,500
	HSPF		13.0
	COP (47°F)	W/W	3.10
	COP (17°F)	W/W	2.80
COP (5°F)	W/W	1.78	
Cassette	Indoor Model		40MBCQ18---3
	Energy Star		YES
	Cooling Rated Capacity	Btu/h	16,000
	Cooling Cap. Range Min - Max	Btu/h	5,600~17,000
	SEER		20.0
	EER		12.5
	Heating Rated Capacity (47°F)	Btu/h	18,000
	Heating Rated Capacity (17°F)	Btu/h	11,200
	Heating Maximum Capacity (17°F)	Btu/h	21,000
	Heating Maximum Capacity (5°F)	Btu/h	17,000
	Heating Cap. Range Min - Max	Btu/h	8,700~21,000
	HSPF		10.3
	COP (47°F)	W/W	2.88
	COP (17°F)	W/W	1.80
COP (5°F)	W/W	1.68	
Ducted	Indoor Model		40MBDQ18---3
	Energy Star		YES
	Cooling Rated Capacity	Btu/h	16,500
	Cooling Cap. Range Min - Max	Btu/h	6,500~18,800
	SEER		19.6
	EER		12.5
	Heating Rated Capacity (47°F)	Btu/h	19,000
	Heating Rated Capacity (17°F)	Btu/h	12,700
	Heating Maximum Capacity (17°F)	Btu/h	21,500
	Heating Maximum Capacity (5°F)	Btu/h	17,800
	Heating Cap. Range Min - Max	Btu/h	8,900~22,000
	HSPF		11.0
	COP (47°F)	W/W	2.93
	COP (17°F)	W/W	1.90
COP (5°F)	W/W	1.75	
Console	Indoor Model		40MBFQ18---3
	Energy Star		YES
	Cooling Rated Capacity	Btu/h	17,000
	Cooling Cap. Range Min - Max	Btu/h	7,800~19,900
	SEER		20.2
	EER		12.5
	Heating Rated Capacity (47°F)	Btu/h	18,000
	Heating Rated Capacity (17°F)	Btu/h	12,000
	Heating Maximum Capacity (17°F)	Btu/h	20,700
	Heating Maximum Capacity (5°F)	Btu/h	16,900
	Heating Cap. Range Min - Max	Btu/h	8,600~21,500
	HSPF		10.6
	COP (47°F)	W/W	3.19
	COP (17°F)	W/W	1.80
COP (5°F)	W/W	1.75	

Construction View

Outdoor Model: 38MARBQ18AA3



Cassette Heat Pump Ductless System

Indoor Model: **40MBCQ18---3**

Submittal Data

Job Data: Location:

Buyer: Buyer P.O. #: Carrier #:

Unit Number: Model Number:

Performance Data Certified By: Date:



STANDARD FEATURES

Modes: Cool, Heat, Dry, Fan, Auto
 Louver Control (Fixed or Swing)
 Outside Air Intake
 Built-in condensate Lift pump
 Follow Me (senses temperature at handheld remote)
 Heating Setback (46° F Heating Mode)
 Quiet indoor operation
 Anti-corrosive fin coating

Controls:

Wireless Remote Controller included with indoor unit
 Optional Wired Remote Controller (Timer Function)
 Optional Wired Remote Controller KSACN0501AAA (7 Day programmable)

LIMITED WARRANTY*

• 10 year limited to original purchaser on compressor and parts upon timely registration, otherwise 5 years

*For residential applications. See warranty for full details.

System	Size	18	
	Indoor Model	40MBCQ18---3	
Electrical	Voltage, Phase, Cycle	V/Ph/Hz	208/230-1-60
	Power Supply	Indoor unit powered by outdoor unit	
	MCA	A.	0.2
Controls	Wireless Remote Controller (°F/°C Convertible)	Standard	
	Wired Remote Controller (°F/°C Convertible)	Optional	
Operating Range	Cooling Indoor DB Min -Max	°F(°C)	63~90 (17~32)
	Heating Indoor DB Min -Max	°F(°C)	32~86 (0~30)
Piping	Pipe Connection Size - Liquid	in (mm)	1/4 (6.35)
	Pipe Connection Size - Suction	in (mm)	1/2 (12.7)

Indoor Coil	Face Area	Sq. Ft.	3.10
	No. Rows	2	
	Fins per inch	19	
	Circuits	4	
Indoor	Body Unit Width	in (mm)	22.44 (570)
	Body Unit Height	in (mm)	10.24 (260)
	Body Unit Depth	in (mm)	22.44 (570)
	Body Net Weight	lbs (kg)	39.68 (18)
	Panel Unit Width	in (mm)	25.47 (647)
	Panel Unit Height	in (mm)	1.97 (50)
	Panel Unit Depth	in (mm)	25.47 (647)
	Panel Net Weight	lbs (kg)	5.51 (2.5)
	Number of Fan Speeds	3	
	Airflow (low to high)	CFM	290/350/420
	Sound Pressure (lowest to highest)	dB(A)	46/48/50
	Air throw Data	ft (m)	30 (9)
Moisture removal	Pint/h (L/h)	4.26 (2.02)	
Field Drain Pipe Size O.D.	in (mm)	1 (25.4)	

For Compatibility See Product Data

Performance may vary based on the outdoor unit matched to. See compatible outdoor units pages for Performance Data.

Accessories

KSACN0101AAA	Wired Remote Control with Timer Function
KSACN0501AAA	Wired Remote Control 7 day Programmable
KSAIF0401AAA	Wi-Fi™ Kit
KSAIC0101230	24V Interface Kit 208/230V
40MBCQ01XXX3	Grille/Ceiling panel
53DS-900---008	Insulated 25' Line Set - 1/4" x 1/2"

Construction View

