



Comfort. Under control.

### Shake Shack (Chesterfield) - Commissioning

#### CheckList Information

**Name :** (FIV) MECHANICAL RR Exhaust - Above Ceiling **Status :** NotSubmitted  
**Assigned Organization :** MULTIPLE **Asset :**  
**Requesting Organization :** National TAB

#### CheckList Item Details

##### RESTROOM FAN ROOF TOP INSTALLATION DETAIL

Fan make and model matches submittals	Yes
Fans are installed in the correct location and orientation	Yes
There is no noticeable physical damage to the fan	Fan is installed with no physical damage
Fan is located at least 10ft from fresh outdoor intakes	Yes
Gravity Back Draft Damper is properly installed and opens fully by hand	Yes
Gravity Back Draft damper is fully sealed to prevent any air leakage between it and the curb	Yes
Fan is secured to the curb base	Yes
Curb extends a minimum 12" above the finished roof	Yes

##### RESTROOM FAN ABOVE CEILING DETAIL

Duct is routed and sized per plan	Yes dampers will be above hard ceiling. Recommend securing and having face damper installed near the inlet of the grille in case damper is not accessible due to bathroom hard ceiling
-----------------------------------	--



**Takeoffabovehardlid.jpg**  
**g**

Gravity damper properly installed, sealed to curb and able to operate by hand

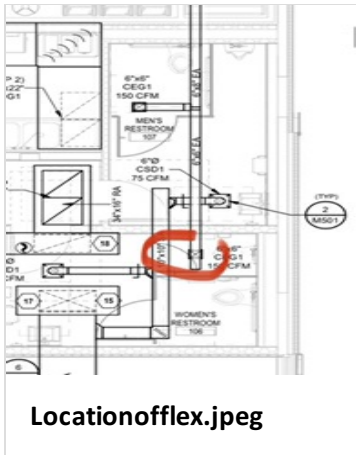
Yes



**Gravitydamper.jpeg**

Branch lines flexible duct less than 5 ft and one 90 degree bend

No, takeoff is located above ductwork. Runs 180deg flex (exceeds 90 degrees) and is greater than 5ft in length. This needs to be rerouted to ensure it meets the specification of less than 5ft of flexible duct with a limit of 1-90 degree bend.



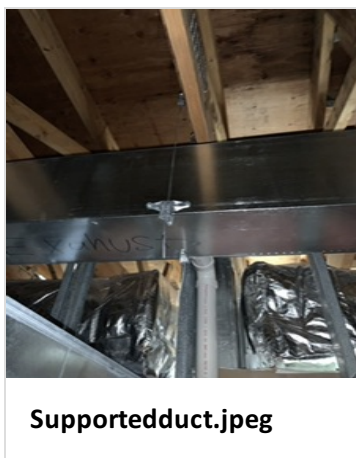
Locationofflex.jpeg



Slacking180degflex.jpeg

Main duct properly supported

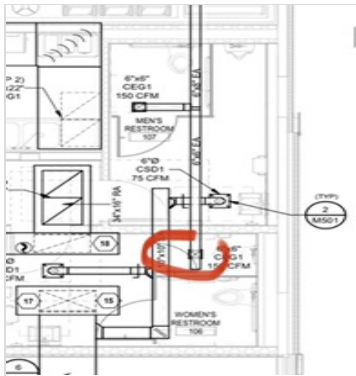
Yes



Supportedduct.jpeg

Flexible duct is supported and routed to prevent kinks

No



Locationofnote.jpeg



Flexkink.jpeg