

FOODSERVICE SHEET LIST	
NO.	SHEET NAME
GENERAL	
K001	KITCHEN EQUIPMENT GENERAL NOTES, LEGENDS, SHEET INDEX
EQUIPMENT PLANS	
K101	KITCHEN EQUIPMENT PLAN
SPECIAL CONDITIONS	
K102	KITCHEN EQUIPMENT SPECIAL CONDITIONS PLAN
KITCHEN EQUIPMENT ELEVATIONS	
K201	KITCHEN EQUIPMENT ELEVATIONS
EQUIPMENT SCHEDULES	
K601	KITCHEN EQUIPMENT SCHEDULES
K602	KITCHEN EQUIPMENT SCHEDULES
K603	KITCHEN EQUIPMENT ROUGH IN SCHEDULES
ELECTRICAL ROUGH-INS	
KE101	KITCHEN EQUIPMENT ELECTRICAL ROUGH-IN PLAN
PLUMBING ROUGH-INS	
KP101	KITCHEN EQUIPMENT PLUMBING ROUGH-IN PLAN

### DEFINITION OF TERMS

FURNISH: SUPPLY AND DELIVER TO APPROPRIATE CONTRACTOR FOR INSTALLATION.

INSTALL: FURNISH TO PROJECT SITE INCLUDING UNLOADING, UNPACKING, ASSEMBLY, ERECTING, PLACING, ANCHORING, PROTECTING, CLEANING AND SIMILAR OPERATIONS; READY FOR FINAL UTILITY CONNECTIONS BY APPROPRIATE CONTRACTOR.

PROVIDE: FURNISH AND INSTALL COMPLETE, READY FOR INTENDED USE.

### FOODSERVICE ABBREVIATIONS - SECTION 114000

ADJ	ADJUSTABLE	KTN	KITCHEN
AFF	ABOVE FINISHED FLOOR	KW	KILOWATT HOUR
ALT	ALTERNATE	LAM	LAMINATE
ALUM	ALUMINUM	LBS	POUNDS
AMP	AMPERE	LKR	LOCKER
ANSI	AMERICAN NATIONAL STANDARDS INSTITUTE	LT	LIGHT
		LVR	LOUVER
BLDG	BUILDING	MAX	MAXIMUM
BTU	BRITISH THERMAL UNIT	MBTUH	1000 BTU/HOUR
C&P	CORD AND PLUG	MECH	MECHANICAL
CBT	CABINET	MIN	MINIMUM
CFM	CUBIC FEET PER MINUTE	MISC	MISCELLANEOUS
CL	CENTER LINE	MTD	MOUNTED
CLG	CEILING	MTL	METAL
CMU	CONCRETE MASONRY UNIT	MUL	MULLION
COL	COLUMN	NA	NOT APPLICABLE
CONN	CONNECTION	NIC	NOT IN CONTRACT
CU FT	CUBIC FEET	NO.	NUMBER
CW	COLD WATER	NS	NO SCALE
DC	DROP CORD	OC	ON CENTER
DFA	DOWN FROM ABOVE	OD	OUTSIDE DIAMETER
DIAM	DIAMETER	OFC	OFFICE
DIM.	DIMENSION	OH.	OVERHEAD
DISP	DISPENSER	OPNG	OPENING
DIV	DIVISION	OPP	OPPOSITE
DN	DOWN	OPPH	OPPOSITE HAND
DR	DUPLEX RECEPTACLE	PC	PLUMBING CONTRACTOR
DTL	DETAIL	PERF	PERFORATE(D)
DWG	DRAWING	PH	PHASE
DWR	DRAWER	PLAM	PLASTIC LAMINATE
EA	EACH	PLUMB	PLUMBING
EC	ELECTRICAL CONTRACTOR	PLYWD	PLYWOOD
EL	ELEVATION	PNL	PANEL
ELEC	ELECTRICAL	PREP	PREPARATION
EQ	EQUAL	PSI	POUNDS PER SQUARE INCH
EQPM	EQUIPMENT	QT	QUARRY TILE
ETR	EXISTING TO REMAIN	QTY	QUANTITY
EX	EXISTING	QUAD	QUAD RECEPTACLE
EXH	EXHAUST	RAD	RADIUS
EXT	EXTERIOR	RCP	REFLECTED CEILING PLAN
FD	FLOOR DRAIN	RECP	RECEPTACLE
FEC	FIRE EXTINGUISHER CABINET	REFG	REFRIGERATOR
FF	FINISHED FLOOR	REQD	REQUIRED
FIN.	FINISH(ED)	RET	RETURN
FLR	FLOOR	RI	ROUGH-IN
FLSHG	FLASHING	RM	ROOM
FLUR	FLUORESCENT	RO	ROUGH OPENING
FRZ	FREEZER	SAN	SANITARY
FT	FOOT	SCH	SCHEDULE
FURN	FURNITURE	SHLVG	SHELVING
G	GAS	SHT	SHEET
GA	GAUGE	SP	SPECIAL RECEPTACLE
GAL	GALLON	SPEC	SPECIFICATION
GALV	GALVANIZED	SQ	SQUARE
GC	GENERAL CONTRACTOR	SR	SINGLE RECEPTACLE
GFCI	GROUND FAULT CIRCUIT INTERRUPTER	SS	STAINLESS STEEL
		STD	STANDARD
GPM	GALLONS PER MINUTE	STL	STEEL
HGT	HEIGHT	STOR	STORAGE
HP	HORSEPOWER	STP	STATIC PRESSURE
HVAC	HEATING, VENTILATING, AIR CONDITIONING	SUP	SUPPLY
		TEL	TELEPHONE
HW	HOT WATER	TV	TELEVISION
ID	INSIDE DIAMETER	TYP	TYPICAL
IN.	INCH	UDS	UTILITY DISTRIBUTION SYSTEM
INCL	INCLUDE	UNFIN	UNFINISHED
INST	INSTALL(ATION)	UNK	UNKNOWN
INSUL	INSULATE(ION)	VAC	VACUUM
INT	INTERIOR	VERT	VERTICAL
IW	INDIRECT WASTE	W/	WITH
JAN	JANITOR	W/O	WITHOUT
JB	JUNCTION BOX	WH	WATER HEATER
JBH	JUNCTION BOX - CEILING/HORIZONTAL MOUNTED	WL	WALL
		WP	WEATHER PROOF
JBW	JUNCTION BOX - WALL MOUNTED	WT	WEIGHT
JC	JANITOR'S CLOSET		
KEC	KITCHEN EQUIPMENT CONTRACTOR		

**NOTE:** FOODSERVICE DRAWINGS INDICATE PLUMBING ROUGH-IN/CONNECTION POINTS ONLY FOR EQUIPMENT SPECIFIED UNDER THE KITCHEN EQUIPMENT (SECTION 114000) CONTRACT. ANY ADDITIONAL PLUMBING REQUIREMENTS ARE NOT INDICATED ON FOODSERVICE DRAWINGS. THE PLUMBING CONTRACTOR (DIVISION 22) SHALL FURNISH AND INSTALL PRESSURE REDUCING VALVES, FLOW CONTROLS, BACK FLOW PREVENTION, RPZ (REDUCED PRESSURE ZONE) VALVES, WATER HAMMER ARRESTOR, GATE VALVES, FOR WATER CONNECTIONS AS REQUIRED PER LOCAL CODES.

### PLUMBING NOTES (DIVISION 22)

- INSTALL KEC (SECTION 114000) FURNISHED FAUCET(S).
- INSTALL KEC (SECTION 114000) FURNISHED TWIST WASTE/LEVER(S).
- INSTALL KEC (SECTION 114000) FURNISHED HAND SINKS (WALL MOUNT STYLE) IN LOCATION SHOWN WITH THE MOUNTING HEIGHT TO BE A.D.A. COMPLIANT. PROVIDE AND INSTALL ALL NECESSARY HARDWARE FOR FINAL CONNECTION.
- INSTALL KEC (SECTION 114000) FURNISHED QUICK DISCONNECT(S) & RESTRAINING DEVICE(S) PER MANUFACTURER'S RECOMMENDATIONS. INSTALL KEC (SECTION 114000) FURNISHED FLOOR TROUGH(S).
- EXTEND AND/OR CONNECT DRAIN(S).
- MANIFOLD DRAINS TO SINGLE CONNECTION.
- FURNISH AND INSTALL BALL VALVE IN DRAIN LINE. VALVE TO BE IN EASILY ACCESSIBLE LOCATION.
- INSTALL KEC (SECTION 114000) FURNISHED WATER FILTER. PIPING FROM FILTER OUTLET TO POINTS OF USE SHALL BE CONCEALED WITHIN WALLS AND CEILINGS. EXTEND DRAIN(S) TO FLOOR SINK/FLOOR DRAIN.
- INSTALL KEC (SECTION 114000) FURNISHED SOLENOID VALVE(S), VACUUM BREAKER(S), FLOW CONTROL(S), PRESSURE REGULATOR(S), AND WATER INLET(S).
- CONNECT MIN. 110°F HOT WATER SUPPLY (70° RISE) BOOSTER HEATER, THEN INTERPIPE TO DISHWASHER INLET. INSTALL TEMPERATURE/PRESSURE GAUGE(S) AND PRESSURE REGULATOR. CONNECT BOOSTER HEATER DRAIN(S) IN HARD COPPER TO FLOOR SINK/FLOOR DRAIN.
- INSTALL KEC (SECTION 114000) FURNISHED DRAIN LINE TEMPERING KIT PER MANUFACTURER'S RECOMMENDATIONS.
- CONNECT DRAIN(S) WITH REFRIGERATION GRADE HARD COPPER USING 1" STANDOFFS. "P" TRAP DRAIN OUTSIDE WALK-IN COMPARTMENT(S). PROVIDE AND INSTALL SLEEVES THRU WALK-IN AND BUILDING WALLS FOR DRAIN LINE(S). FOAM & CAULK AROUND SLEEVES AND DRAIN LINES. WRAP WITH DRAIN LINE HEATER AND INSULATION WHERE SUBJECT TO FREEZING TEMPERATURES.
- INSTALL KEC (SECTION 114000) FURNISHED HOSE REEL, MIXING VALVE, CHROME FITTINGS, VACUUM BREAKER, AND CONTROL VALVE.
- INSTALL KEC (SECTION 114000) FURNISHED FIRE SUPPRESSION SYSTEM GAS SHUT OFF VALVE. MUST BE ACCESSIBLE AND NOT CONCEALED IN WALL OR CEILING.
- PROVIDE GRAY WATER AND SLURRY PIPING TO AND FROM (SECTION 114000) FURNISHED PULPER, TROUGH, AND WATER EXTRACTOR. INSTALL KEC (SECTION 114000) FURNISHED TROUGH INLET NOZZLES AND PROVIDE SHUT OFF VALVE AT EACH NOZZLE.
- VERIFY UTILITIES FOR EXISTING & NIC EQUIPMENT.

**NOTE:** FOODSERVICE DRAWINGS INDICATE ELECTRICAL ROUGH-IN/CONNECTION POINTS ONLY FOR EQUIPMENT SPECIFIED UNDER THE KITCHEN EQUIPMENT (SECTION 114000) CONTRACT. ANY ADDITIONAL ELECTRICAL REQUIREMENTS ARE NOT INDICATED ON FOODSERVICE DRAWINGS.

### ELECTRICAL NOTES (DIVISION 26)

- FURNISH AND INSTALL CORD AND PLUG SET(S).
- INSTALL KEC (SECTION 114000) FURNISHED CORD AND PLUG SET(S).
- FURNISH AND INSTALL DEVICE & COVER IN KEC (SECTION 114000) FURNISHED JUNCTION BOX.
- CONNECT TO JUNCTION BOX, DEVICE, & COVER FURNISHED BY KEC (SECTION 114000).
- CONNECT WITH LIQUID TIGHT CONDUIT FROM JUNCTION BOX TO EQUIPMENT/DEVICE(S) FOR A DIRECT CONNECTION.
- CONNECT WITH LIQUID TIGHT CONDUIT FROM JUNCTION BOX THROUGH THE CONTROL THEN TO EQUIPMENT/DEVICE(S) FOR A DIRECT CONNECTION.
- CONNECT THRU DISPOSER CONTROL TO SOLENOID VALVE AND MOTOR.
- FURNISH AND INSTALL WIRING TO KEC (SECTION 114000) FURNISHED REMOTE CONTROL SWITCHES.
- FURNISH AND INSTALL SWITCH. CONNECT TO LIGHTS FURNISHED AND INSTALLED BY KEC (SECTION 114000).
- CONNECT POWER SUPPLY TO KEC (SECTION 114000) FURNISHED LOAD CENTER. COUNTER SHALL BE PREWIRED AND SHIPPED IN SECTIONS. CONNECT BETWEEN SECTIONS.
- CONNECT TO KEC (SECTION 114000) FURNISHED JUNCTION BOX ABOVE WALK-IN DOOR. LIGHT FIXTURE LOCATED ADJACENT/ABOVE DOOR IS PREWIRED TO FACTORY MOUNTED LIGHT SWITCH. MOUNT ADDITIONAL SECTION 114000 FURNISHED LIGHTS WHERE INDICATED AND CONNECT TO SWITCH. ALL CONDUIT SHALL BE EXPOSED ON TOP OF THE WALK-IN. NO EXPOSED CONDUIT WILL BE ALLOWED INSIDE THE WALK-IN.
- FOAM & SEAL INSIDE AND OUTSIDE OF CONDUIT PENETRATIONS THRU WALK-IN.
- CONNECT KEC (SECTION 114000) FURNISHED TEMPERATURE ALARM SYSTEM. COORDINATE WITH BUILDING SYSTEMS.
- CONNECT TO ELECTRICAL CONTRACTOR (DIVISION 26) FURNISHED FUSED DISCONNECT AT CONDENSING UNIT.
- INSTALL KEC (SECTION 114000) FURNISHED DEFROST TIMER. CONNECT THRU TIMER TO EVAPORATOR COIL.
- CONNECT FROM KEC (SECTION 114000) FURNISHED CONDENSING UNIT, THRU DEFROST TIMER, TO EVAPORATOR COIL.
- PROVIDE NEMA RECEPTACLE WITH WEATHER COVER BEHIND FREEZER EVAPORATOR COIL FOR DRAIN LINE HEATER.
- CONNECT EXHAUST FAN THRU FAN CONTROL CONTACTS IN DISHWASHER.
- CONNECT TABLE LIMIT SWITCH TO DRY CONTACT ON KEC (SECTION 11400) FURNISHED DISH MACHINE.
- CONNECT DRAIN WATER TEMPERING DEVICE PER MANUFACTURER'S RECOMMENDATIONS.
- CONNECT THRU KEC (SECTION 114000) FURNISHED LIGHT SWITCH MOUNTED IN FACE OF HOOD OR HOOD CONTROL CABINET TO LIGHT FIXTURES IN HOOD(S). INTERWIRE LIGHT FIXTURES BETWEEN HOOD SECTIONS AS REQUIRED.
- CONNECT THRU KEC (SECTION 114000) FURNISHED FAN CONTROL SWITCH MOUNTED IN FACE OF HOOD OR HOOD CONTROL CABINET TO EXHAUST FAN(S)/MAKE-UP AIR UNIT(S). INTERWIRE THRU MOTOR STARTER(S)/VARIABLE FREQUENCY DRIVE(S) AND OVERLOAD PROTECTION DEVICE(S) AS REQUIRED. INSTALL AND/OR INTERWIRE THE KEC (SECTION 114000) FURNISHED HOOD HEAT SENSOR(S) AND SMOKE SENSORS AS REQUIRED.
- CONNECT 120 VOLT FROM KEC (SECTION 114000) FURNISHED MICRO SWITCH IN FIRE SUPPRESSION SYSTEM CONTROL PANEL TO SHUNT TRIP BREAKER(S) FOR SHUT DOWN OF POWER TO ALL ELECTRICAL DEVICES UNDER HOOD(S) AND 18" OUTSIDE PERIMETER OF HOOD(S). CONNECT FROM MICRO SWITCH TO DIVISION 26 FURNISHED RELAY(S) OR SWITCHES FOR SHUT DOWN/CONTROL OF HOOD LIGHTS, MAKE-UP AIR FAN, AND FIRE ALARM SYSTEM.
- CONNECT 120 VOLT FROM KEC (SECTION 114000) FURNISHED MICRO SWITCH IN FIRE SUPPRESSION SYSTEM CONTROL PANEL THRU MANUAL RESET RELAY TO ELECTRIC GAS VALVE. EC IS RESPONSIBLE FOR ANY REQUIRED INTERWIRING/CONTROL WIRES FOR THE FIRE SUPPRESSION SYSTEM AND ASSOCIATED ELECTRICAL GAS SOLENOID VALVES.
- PROVIDE CONCEALED CONDUIT AND RECESSED OCTAGONAL JUNCTION BOX IN WALL AT 42"-48" AFF FOR REMOTE MANUAL PULL STATION(S). COORDINATE LOCATION(S) WITH FIRE SUPPRESSION SYSTEM CONTRACTOR AND AUTHORITIES HAVING JURISDICTION PRIOR TO ROUGH-IN. EC IS RESPONSIBLE FOR ANY REQUIRED INTERWIRING/CONTROL WIRES FOR THE FIRE SUPPRESSION SYSTEM AND ASSOCIATED ELECTRICAL GAS SOLENOID VALVES. VERIFY AND PROVIDE UTILITIES FOR EXISTING/NIC EQUIPMENT PRIOR TO ROUGH-IN.
- INSTALL 3/4" EMPTY CONDUIT AND JUNCTION BOX FOR DATA CONNECTION. VERIFY EXACT REQUIREMENTS AND TERMINATION POINTS PRIOR TO ROUGH-IN.
- EC TO PROVIDE AND INSTALL AN APPROVED GFCI RECEPTACLE WHEN THE EQUIPMENT IS PROVIDED WITH A CORD AND PLUG.

### PLUMBING LEGEND

	COLD WATER
	HOT WATER
	CHILLED WATER
	CHILLED WATER RETURN
	DIRECT WASTE
	FLOOR DRAIN
	FLOOR SINK - FULL GRATE
	FLOOR SINK - PARTIAL GRATE
	FLOOR SINK - NO GRATE
	FUNNEL FLOOR DRAIN
	HUB FLOOR DRAIN
	GAS DROP FROM MANIFOLD
	STEAM SUPPLY
	CONDENSATE RETURN
	PIPING STUB UP
	FILTERED WATER
	BEVERAGE CONDUIT STUB UP

### ELECTRICAL LEGEND

	DUPLEX RECEPTACLE
	GFCI RECEPTACLE
	WEATHERPROOF RECEPTACLE
	SINGLE RECEPTACLE
	SPECIAL PURPOSE RECEPTACLE
	DOUBLE DUPLEX RECEPTACLE
	FLUSH FLOOR MOUNT RECEPTACLE
	JUNCTION BOX - CEILING MOUNTED
	JUNCTION BOX - WALL MOUNTED
	SWITCH
	DATA CONNECTION
	MANUAL PULL STATION
	DROP CORD MOUNTED FROM CEILING
	CONDUIT STUB LOCATION
	DEFROST TIME CLOCK
	DISCONNECT
	LIGHT - RECTANGULAR
	LIGHT - ROUND
	MOTOR



505 Collins Street  
P.O. Box 3505  
South Attleboro, MA 02703  
F 508-399-6000  
F 508-761-3620  
trimarkusa.com

UNITED EAST

aria  
GROUP

830 North Blvd.  
Oak Park, Illinois  
60301

708-445-8400  
ariainc.com

ARIA GROUP ARCHITECTS, INC.

SHAKE SHACK  
585 N BARKER ROAD, BROOKFIELD, WI 53005

SHACK #1387

**FIELD VERIFICATION**  
Contractor shall verify all figured dimensions and conditions at the job site and notify Aria Group Architects, Inc. of any dimensional errors, omissions or discrepancies before beginning or fabricating any work. Do not scale these drawings.

**COPYRIGHT**  
Aria Group Architects, Inc. shall retain all common law, statutory and other reserved rights. These drawings and related documents shall not be duplicated, disclosed or otherwise without written consent of Aria Group Architects, Inc.

NO.	DATE	REMARKS
1	04/29/2022	ISSUE FOR CONSTRUCTION
	12/16/2021	ISSUE FOR PERMIT / BID
	08/02/2021	ISSUE FOR LL REVIEW
REVISIONS		

Drawing Title  
KITCHEN EQUIPMENT  
GENERAL NOTES,  
LEGENDS, SHEET INDEX

Job No.  
214586

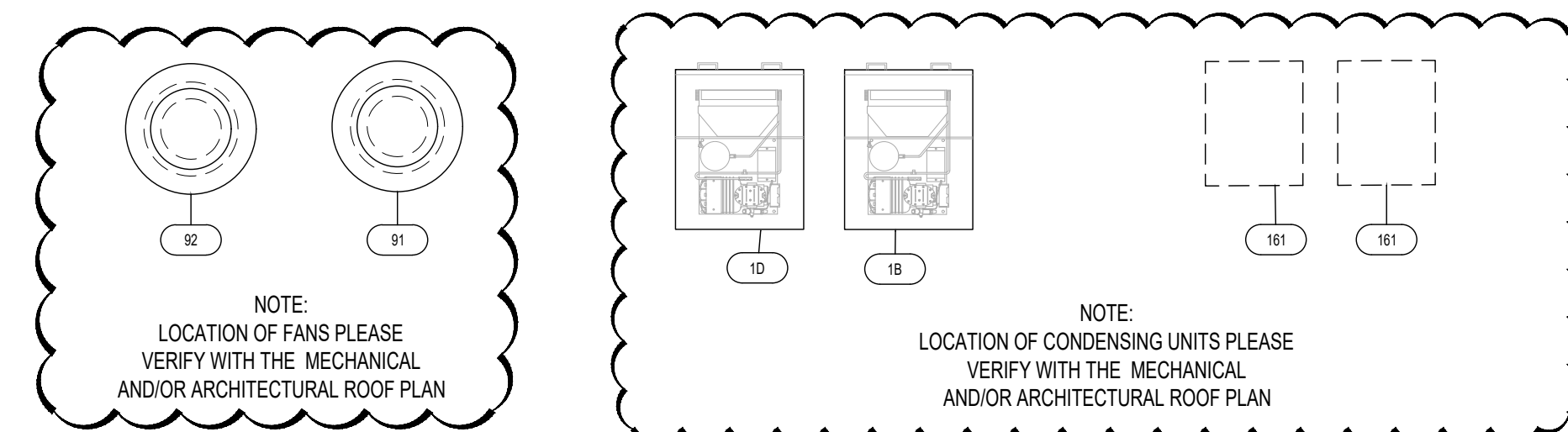
Drawn  
MSH

Scale  
As indicated

Date  
06/14/2021

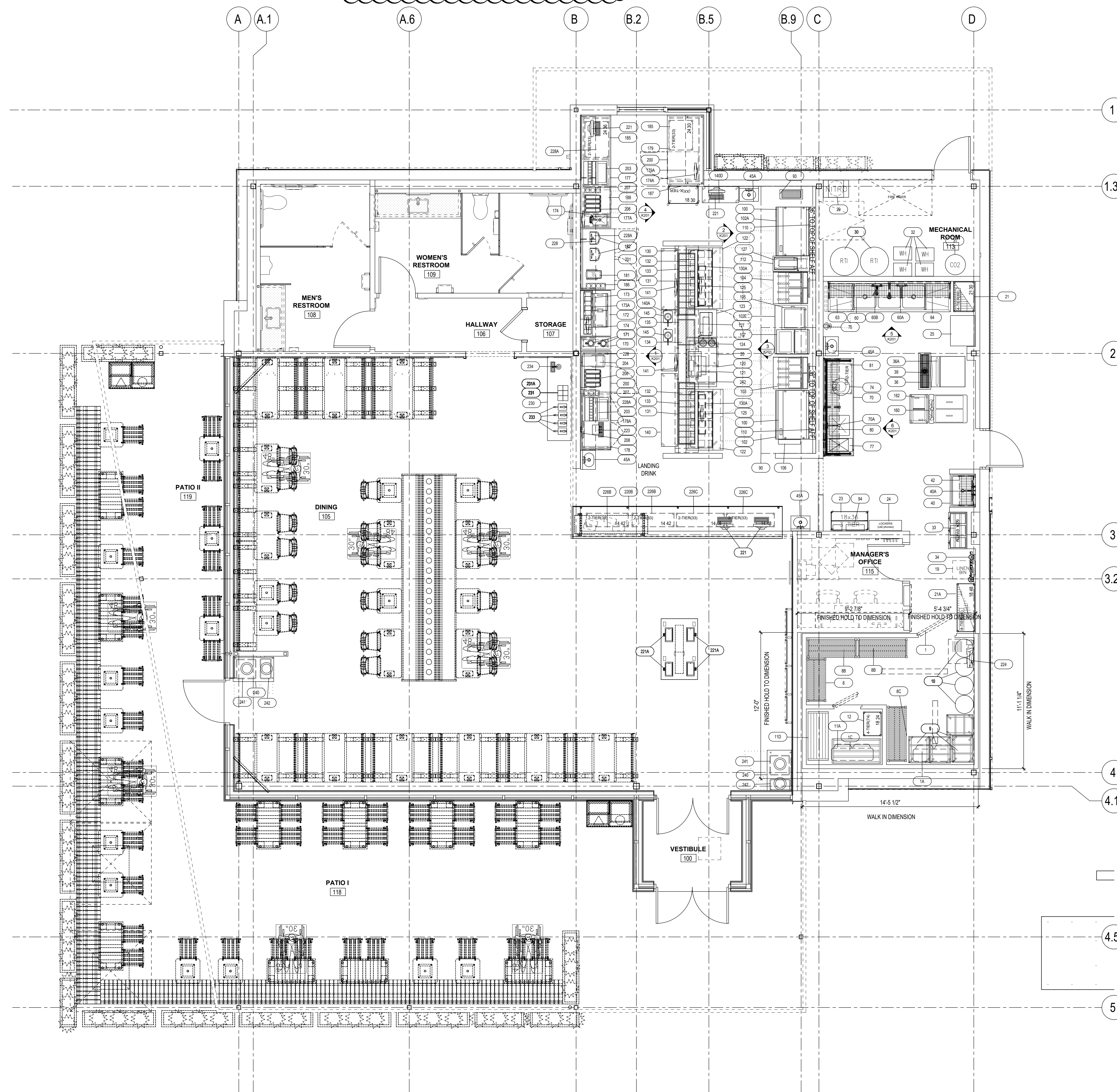
Sheet No.

K001



NOTE:  
LOCATION OF FANS PLEASE  
VERIFY WITH THE MECHANICAL  
AND/OR ARCHITECTURAL ROOF PLAN

NOTE:  
LOCATION OF CONDENSING UNITS PLEASE  
VERIFY WITH THE MECHANICAL  
AND/OR ARCHITECTURAL ROOF PLAN



**FOODSERVICE EQUIPMENT LAYOUT**  
SCALE: 1/2" = 1' - 0"

SHAKE SHACK  
585 N BARKER ROAD, BROOKFIELD, WI 53005

SHACK #1387

**FIELD VERIFICATION**  
Contractor shall verify all figured dimensions and conditions at the job site and notify Aria Group Architects, Inc. of any dimensional errors, omissions or discrepancies before beginning or fabricating any work. Do not scale these drawings.

**COPYRIGHT**  
Aria Group Architects, Inc. shall retain all common law, statutory and other reserved rights. These drawings and related documents shall not be duplicated, disclosed or otherwise without written consent of Aria Group Architects, Inc.

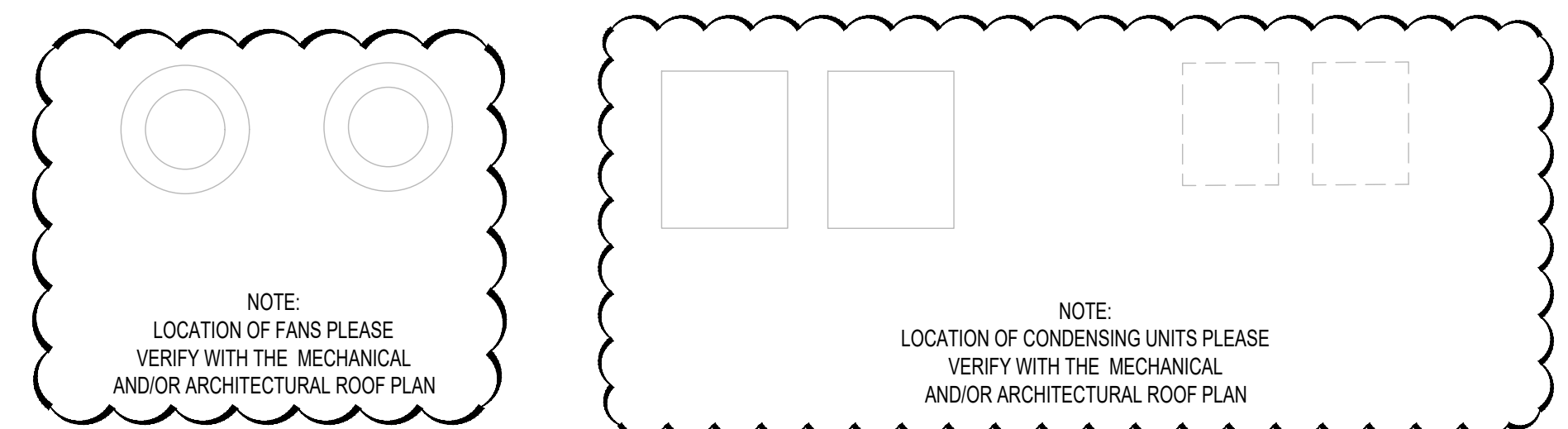
NO.	DATE	REMARKS
1	04/29/2022	ISSUE FOR CONSTRUCTION
	12/16/2021	ISSUE FOR PERMIT / BID
	08/02/2021	ISSUE FOR LL REVIEW
		REVISIONS

Drawing Title  
**KITCHEN EQUIPMENT PLAN**

Job No. 214686  
Drawn MSH

Scale As Indicated  
Date 06/14/2021

Sheet No.  
**K101**



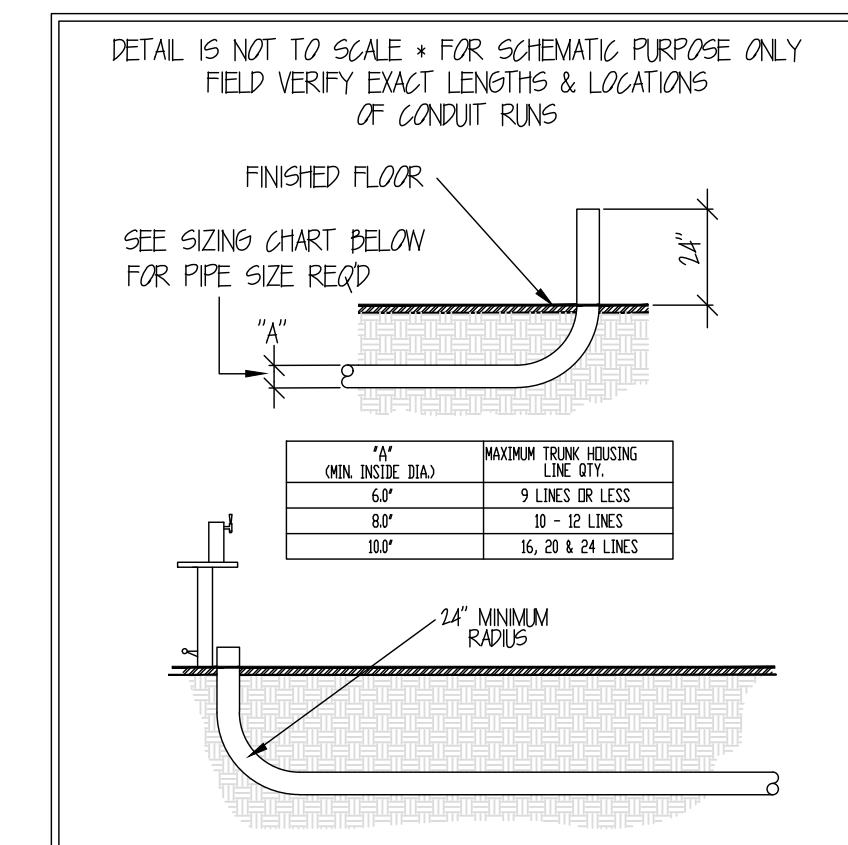
**SPECIAL CONDITIONS SCHEDULE**

- WB-1 3/4" WALL BLOCKING FROM 24" TO 72" AFF. G.C. TO PROVIDE WALL BLOCKING.
- WB-2 3/4" WALL BLOCKING FROM 30" TO 96" AFF. G.C. TO PROVIDE WALL BLOCKING.
- WB-3 3/4" WALL BLOCKING FROM 24" TO 96" AFF. G.C. TO PROVIDE WALL BLOCKING.
- WB-4 3/4" WALL BLOCKING FROM 48" TO FINISHED CEILING AFF. G.C. TO PROVIDE WALL BLOCKING.
- WB-5 3/4" WALL BLOCKING FROM FINISHED FLOOR TO TOP OF WALL. G.C. TO PROVIDE WALL BLOCKING.
- WB-6 3/4" WALL BLOCKING FROM TOP OF WINDOW TO FINISHED CEILING. G.C. TO PROVIDE WALL BLOCKING.  
3/4" WALL BLOCKING FROM BOTTOM OF SOFFIT TO FINISHED CEILING. G.C. TO PROVIDE WALL BLOCKING.
- SP-1 4" DEEP DEPRESSION BY G.C. TO BE SMOOTH LEVEL. ALL WATERPROOFING, GROUTING AND FINISHED FLOOR TO BE PROVIDED BY G.C..

**MECHANICAL CONNECTION SCHEDULE**

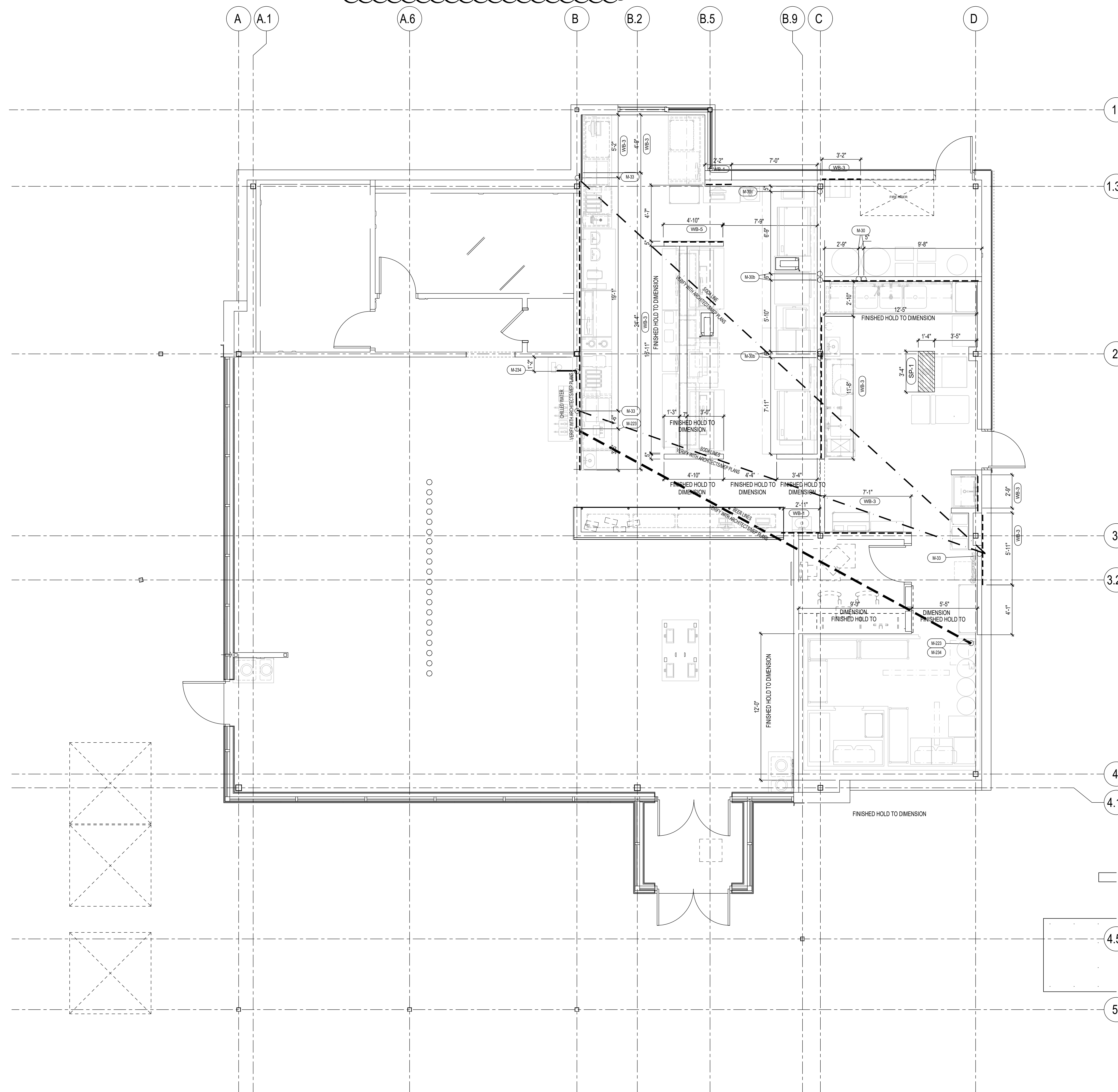
- M-30 RTI OIL FILL BOX AT 36" ABOVE SIDE WALL. G.C. TO PIPE FROM BOX TO TANKS LOCATED IN KITCHEN. VERIFY WITH THE ARCHITECT/MEP ENGINEER FOR ANY IN WALL CONDUIT.
- M-30b RTI OIL FILL AND RETURN PIPING STUB OUT WALL AT 24" AFF AND CONNECT TO FRYERS. G.C. TO PIPE TO TANKS. VERIFY WITH THE ARCHITECT/MEP ENGINEER FOR ANY IN WALL CONDUIT.
- M-30c RTI OIL RETURN PIPING STUB OUT WALL AT 24" AFF AND CONNECT TO GREASE COLLECTOR. G.C. TO PIPE TO TANKS. VERIFY WITH THE ARCHITECT/MEP ENGINEER FOR ANY IN WALL CONDUIT.
- M-31 CO2 FILL BOX AT 36" ABOVE SIDE WALL. G.C. TO PIPE TO TANK LOCATED IN KITCHEN.
- M-33 SODA TRUNK LINE FROM BAG IN BOX. STUB UP LOCATION ( TWO LOCATIONS ). VERIFY WITH THE ARCHITECT/MEP ENGINEER FOR ANY IN WALL OR UNDERGROUND CONDUIT.
- M-223 BEER TRUNK LINE FROM WALK IN. STUB UP LOCATION ( TWO LOCATIONS ). VERIFY WITH THE ARCHITECT/MEP ENGINEER FOR ANY IN WALL OR UNDERGROUND CONDUIT.
- M-234 CHILLED WATER FROM BEER TRUNK LINE STUB UP LOCATION ( ONE LOCATION ). VERIFY WITH THE ARCHITECT/MEP ENGINEER FOR ANY IN WALL OR UNDERGROUND CONDUIT.

**CONDUIT SCHEMATIC - UNDER FLOOR**



**CONDUIT NOTES:**

- 1 CONDUIT TO BE PROVIDED BY GENERAL CONTRACTOR
- 2 CONDUIT TYPE SHALL BE GREY ELECTRICAL PVC
- 3 CONDUIT RUNS UNDER GROUND MUST HAVE A SMOOTH INTERIOR WITH MINIMUM INSIDE DIMENSION OF SIX INCHES, AND HAVE ONLY ONE (1) 24" OR 30" RADIUS SWEEP BEND (45 OR 90 DEGREES) AT EACH END
- 4 DURING CONSTRUCTION, CONDUIT TO BE FINISHED AT 24" AFF TO BE CONSTRUCTED WITH INTERNALLY SMOOTH LEAK TIGHT JOINTS
- 5 CONDUIT TO BE CAPPED AND SEALED AT BOTH ENDS DURING CONSTRUCTION. INSTALLER TO TRIM EXPOSED ENDS
- 6 AFTER PRODUCT LINES ARE INSTALLED, THE OPEN ENDS OF THE CONDUIT ARE TO BE FILLED AND SEALED (WATERTIGHT) APPROXIMATELY 2" TO 4" @ EACH END



**FOODSERVICE SPECIAL CONDITIONS PLAN**  
SCALE: 1/4" = 1' - 0"

SHAKE SHACK  
585 N BARKER ROAD, BROOKFIELD, WI 53005

SHACK #1387

**FIELD VERIFICATION**  
Contractor shall verify all figured dimensions and conditions at the job site and notify Aria Group Architects, Inc. of any dimensional errors, omissions or discrepancies before beginning or fabricating any work. Do not scale these drawings.

**COPYRIGHT**  
Aria Group Architects, Inc. shall retain all common law, statutory and other reserved rights. These drawings and related documents shall not be duplicated, disclosed or otherwise without written consent of Aria Group Architects, Inc.

NO.	DATE	REMARKS
1	04/29/2022	ISSUE FOR CONSTRUCTION
	12/16/2021	ISSUE FOR PERMIT / BID
	08/02/2021	ISSUE FOR LL REVIEW
REVISIONS		

Drawing Title  
**KITCHEN EQUIPMENT SPECIAL CONDITIONS PLAN**

Job No. 214686 Drawn MSH

Scale As indicated Date 06/14/2021

Sheet No.  
**K102**



EQUIPMENT UTILITY SCHEDULE

REV	ITEM NO.	QTY	ITEM DESCRIPTION	MFR	MODEL	ELECTRICAL					PLUMBING					REMARKS	ITEM NO.		
						VOLTS	PH	AMPS	KW	HP	CONN.	NEMA	CW (IN)	HW (IN)	IW			DW	GAS SIZE
	1	1	WALKIN COOLER/FREEZER COMBO	BALLY FOR SHAKE SHACK	CUSTOM C/F	(2)120	1	(2) 15.0									REFER TO MANUFACTURER'S SHOP DRAWINGS FOR DETAILS	1	
	1A	1	COOLER EVAPORATOR	BALLY FOR SHAKE SHACK	COOLER EVAPORATOR	115	1	15.0									REFER TO MANUFACTURER'S SHOP DRAWINGS FOR DETAILS	1A	
	1B	1	AIR-COOLED COOLER CONDENSING UNIT	BALLY FOR SHAKE SHACK	COOLER CONDENSING UNIT	208	3	20.0									AIR - COOLED. REFER TO MANUFACTURER'S SHOP DRAWINGS FOR DETAILS	1B	
	1C	1	FREEZER EVAPORATOR	BALLY FOR SHAKE SHACK	FREEZER EVAPORATOR	208	1	15.0									REFER TO MANUFACTURER'S SHOP DRAWINGS FOR DETAILS	1C	
	1D	1	AIR-COOLED FREEZER CONDENSING UNIT	BALLY FOR SHAKE SHACK	FREEZER CONDENSING UNIT	208	1	20.0									AIR - COOLED. REFER TO MANUFACTURER'S SHOP DRAWINGS FOR DETAILS	1D	
	2-7	1	SPARE NUMBER	CUSTOM														2-7	
	8	1	SHELVING UNIT, PLASTIC WITH POLY EXTERIOR STEEL POSTS	CAMBRO	CPU184272V4480												4-TIER SHELVING UNITS, WITH 7'-1/2" H DUNNAGE SUPPORT	8	
	8B	2	SHELVING UNIT, PLASTIC WITH POLY EXTERIOR STEEL POSTS	CAMBRO	CPU184872V4480												4-TIER SHELVING UNITS, WITH 7'-1/2" H DUNNAGE SUPPORT	8B	
	8C	1	SHELVING UNIT, PLASTIC WITH POLY EXTERIOR STEEL POSTS	CAMBRO	CPU185472V4480												4-TIER SHELVING UNITS, WITH 7'-1/2" H DUNNAGE SUPPORT	8C	
	9	4	UNIVERSAL PAN RACK	EAGLE GROUP	Z6690													9	
	10	4	KEG DOLLIES	NIC	BY OTHERS													10	
	11A	1	DUNNAGE RACK	CHANNEL	ADE2448													11A	
	11D	1	DUNNAGE RACK	CHANNEL	ADE2048													11D	
	12	1	WIRE SHELVES EPOXY	EAGLE FOR SHAKE SHACK	SHELVING UNIT												4-TIER UNIT WITH 74" POST, SIZES PER PLAN	12	
	4	1	WIRE SHELVING	EAGLE GROUP	1836VG														
	13-18	1	SPARE NUMBER	CUSTOM														13-18	
	19	1	LINEN BIN	NIC	BY OTHERS												NOT IN CONTRACT - BY OTHERS	19	
	20	1	BREAD RACK DOLLY	NIC	BY OTHERS												NOT IN CONTRACT - BY OTHERS	20	
	21	1	WIRE SHELVES EPOXY	EAGLE FOR SHAKE SHACK	SHELVING UNIT												4-TIER UNITS WITH 86" POST, SIZES PER PLAN	21	
	21A	1	WIRE SHELVES EPOXY	EAGLE FOR SHAKE SHACK	SHELVING UNIT												4-TIER UNITS WITH 86" POST, SIZES PER PLAN	21A	
	23	1	MOBIL GARMENT RACK	EAGLE FOR SHAKE SHACK	MOBIL GARMENT RACK												CONSISTS OF (3) 1836VG-X WIRE SHELVES, (4) P86-VG-CO POSTS, (1) CH36 HANGER RAIL, (4) CASTERS	23	
	24	1	LOCKERS	GLOBAL IND EQUIP	WB493332BK												G.C. TO PROVIDE WALL BLOCKING.	24	
	25	1	WORK TABLE, STAINLESS STEEL TOP	EAGLE GROUP	T2436STB-BS													25	
	26-28	1	SPARE NUMBER	CUSTOM														26-28	
	29	1	NITROGEN TANK	NIC	BY OTHERS	115	1	20.0									ALL TRADES TO VERIFY UTILITY REQUIREMENTS.	29	
	30	2	RTI OIL TANK	NIC	BY OTHERS	110	1	20.0									ALL TRADES TO VERIFY UTILITY REQUIREMENTS.	30	
	31	1	CO2 TANK	NIC	BY OTHERS												ALL TRADES TO VERIFY UTILITY REQUIREMENTS.	31	
	32	3	WATER HEATER	NIC	BY OTHERS												ALL TRADES TO VERIFY UTILITY REQUIREMENTS.	32	
	33	1	BAG N BOX	NIC	BY OTHERS	120	1	20.0									ALL TRADES TO VERIFY UTILITY REQUIREMENTS.	33	
	34	1	WATER FILTRATION SYSTEM	EVERPURE	EV932806												G.C. TO PROVIDE WALL BLOCKING. P.C. TO INTERPIPE TO ICE MAKER/COFFEE MAKER; GC TO PROVIDE WALL BLOCKING.	34	
	35	1	SPARE NUMBER	CUSTOM														35	
	36	1	ICE CUBER	MANITOWOC	IYT1200A	208-230	1	14.2										36	
	36A	1	ICE BIN FOR ICE MACHINES	MANITOWOC	D570													36A	
	37-38	1	SPARE NUMBER	CUSTOM														37-38	
	39	1	FLOOR TROUGH	NIC	BY OTHERS													39	
	40	1	MOP SINK	NIC	EAGLE F2820-12												TO BE PROVIDED BY THE PLUMBER.	40	
	40A	1	SERVICE FAUCET	T&S BRASS	B-0658												G.C. TO PROVIDE WALL BLOCKING.	40A	
	41	1	SPARE NUMBER	CUSTOM														41	
	42	1	WIRE SHELVES EPOXY	EAGLE FOR SHAKE SHACK	WALL SHELVING UNIT 30_14												2-TIER UNIT 30"x14" WITH 33" POST AND WALL BRACKETS; SIZES PER PLAN. G.C. TO PROVIDE WALL BLOCKING.	42	
	43-45	1	SPARE NUMBER	CUSTOM														43-45	
	45	2	HAND SINK	EAGLE GROUP	HSA-10-F												G.C. TO PROVIDE WALL BLOCKING.	45	
	45A	4	HAND SINK	EAGLE GROUP	HSA-10-F-LRS												G.C. TO PROVIDE WALL BLOCKING.	45A	
	46	1	SPARE NUMBER	CUSTOM														46	
	47-59	1	SPARE NUMBER	CUSTOM														47-59	
	60	1	THREE (3) COMPARTMENT SINK	EAGLE GROUP	314-22-3-24													60	
	60A	1	WALL / SPLASH MOUNT FAUCET	T&S BRASS	B-0231-CC													60A	
	60B	1	MINI PRE-RINSE FAUCET ASSEMBLY	T&S BRASS	MPZ-8WLN-08												WITH ADD ON FAUCET AND WALL BRACKET, G.C. TO PROVIDE WALL BLOCKING.	60B	
	60C	3	DRAIN, LEVER / TWIST WASTE	FISHER	22209												NOT SHOWN ON PLAN.	60C	
	60D	1	FAUCET, PARTS	T&S BRASS	B-TEE-EZK												NOT SHOWN ON PLAN.	60D	
	60-62	1	SPARE NUMBER	CUSTOM														60-62	
	63	1	DISHWASHER, UNDERCOUNTER	ECOLAB	E-UHT	208	3	21.3	9.0	1	JBW						WITH BUILT IN HOT WATER BOOSTER.	63	
	64	1	WALL GRID SYSTEM	EAGLE FOR SHAKE SHACK	YSHAKE-GRID-0002-00												(1) 2-TIER UNIT, (1) 1-TIER UNIT WITH WALL MAT, 33" POST AND WALL BRACKETS, SIZES PER PLAN. G.C. TO PROVIDE WALL BLOCKING.	64	
	65-69	1	SPARE NUMBER	CUSTOM														65-69	
	70	1	PREP TABLE	EAGLE GROUP	T3096STEM-BS													70	
	70A	1	DECK MOUNT FAUCET	T&S BRASS	B-0227												WITH (1) E24 18" X 20" SINK BOWL, (1) FISHER 22209 LEVER WASTE, FAUCET AND SINK COVER.	70A	
	70B	1	FAUCET, PARTS	T&S BRASS	B-TEE-EZK												NOT SHOWN ON THE PLAN.	70B	
	70C	1	DRAIN, LEVER / TWIST WASTE	FISHER	22209												NOT SHOWN ON PLAN.	70C	
	71-73	1	SPARE NUMBER	CUSTOM														71-73	
	74	1	VEGETABLE DRYER	DYNAMIC USA	SD925C												WITH SSB-1 STABILIZING BASE.	74	
	75	1	MIXER, HAND	ROBOT COUPE	MP 350TURBOCOMBI	120	1	5.5	0.66	1	DR						WITH STORAGE BRACKET, G.C. TO PROVIDE WALL BLOCKING.	75	
	76	1	SPARE NUMBER	CUSTOM														76	
	77	1	RETHERMALIZER, WATER TANK, ELECTRIC	PITCO FOR SHAKE SHACK	TH-CRTE	208	1	29.8	6.0		SP							77	
	78-79	1	SPARE NUMBER	CUSTOM														78-79	
	80	1	WALL GRID SYSTEM	EAGLE FOR SHAKE SHACK	YSHAKE-GRID-0001-00												(1) 2-TIER UNIT, (1) 1-TIER UNIT WITH WALL MAT, 33" POST AND WALL BRACKETS, SIZES PER PLAN. G.C. TO PROVIDE WALL BLOCKING.	80	
	81	1	WIRE SHELVES EPOXY	EAGLE FOR SHAKE SHACK	SHELVING UNIT												2-TIER UNIT WITH 33" POST, SIZES PER PLAN.	81	
	82-89	1	SPARE NUMBER	CUSTOM														82-89	
	90	1	EXHAUST HOOD	NIC	BY OTHERS	X	X	X									* ALL TRADES MUST VERIFY UTILITY REQUIREMENTS WITH THE OWNER. REFER TO MANUFACTURER'S SHOP DRAWINGS FOR DETAILS.	90	
	91	1	EXHAUST FAN	NIC	BY OTHERS	X	X	X									* ALL TRADES MUST VERIFY UTILITY REQUIREMENTS WITH THE OWNER. REFER TO MANUFACTURER'S SHOP DRAWINGS FOR DETAILS.	91	
	92	1	SUPPLY FAN	NIC	BY OTHERS	X	X	X									* ALL TRADES MUST VERIFY UTILITY REQUIREMENTS WITH THE OWNER. REFER TO MANUFACTURER'S SHOP DRAWINGS FOR DETAILS.	92	
	93	1	SPARE NUMBER	CUSTOM														93	
	93	1	GREASE COLLECTOR	NIC	BY OTHERS	120	1	20.0									* ALL TRADES MUST VERIFY UTILITY REQUIREMENTS WITH THE OWNER. E.C. TO INTERWIRE TO BUILDING ALARM SYSTEM AND FOR EQUIPMENT SHUT-DOWN. ALL TRADES MUST VERIFY UTILITY REQUIREMENTS WITH THE OWNER.	93	
	94	1	ANSUL	NIC	BY OTHERS	120	1	15.0										94	
	95-99	1	SPARE NUMBER	CUSTOM														95-99	
1	100	2	GAS COUNTERTOP GRIDDLE	LANG	9K-248SC-NATSH	120	1	2.0										100	
	100A	1	SAFETY SYSTEM MOVEABLE GAS CONNECTOR	DORMONT	1675KIT2S48													NOT SHOWN ON PLAN.	100A
	101A	1	SAFETY SYSTEM MOVEABLE GAS CONNECTOR	DORMONT	1675KIT2S48													NOT SHOWN ON PLAN.	101A
1	102	1	EQUIPMENT STAND, REFRIGERATED BASE	RANDELL FOR SHAKE SHACK	20048-513-SS-R	115	1	8.7									ON CASTERS, RIGHT SIDE COMPRESSOR.	102	
1	102A	1	EQUIPMENT STAND, REFRIGERATED BASE	RANDELL FOR SHAKE SHACK	20048-513-SS-L	115	1	8.7									ON CASTERS, LEFT SIDE COMPRESSOR.	102A	
	102E	1	EQUIPMENT STAND, REFRIGERATED BASE	RANDELL FOR SHAKE SHACK	20048-513-30HSS-L	115	1	8.7									ON CASTERS, LEFT SIDE COMPRESSOR.	102E	
	103	1	FRYER BATTERY, GAS	PITCO	SSH55-2FD	115	1	1.7									WITH FILTER DRAWER, DIGITAL CONTROLS, CASTERS, DOUBLE BASKET HANGERS.	103	
	103A	1	SAFETY SYSTEM MOVEABLE GAS CONNECTOR	DORMONT	16100KIT2S48	115	1	7.0									NOT SHOWN ON PLAN.	103A	
	104	1	FRYER BATTERY, GAS	PITCO	SSH55-2FD	115	1	1.7											





UNITED EAST

505 Collins Street  
P.O. Box 3506  
South Attleboro, MA 02703  
P 508-399-6000  
F 508-761-3620

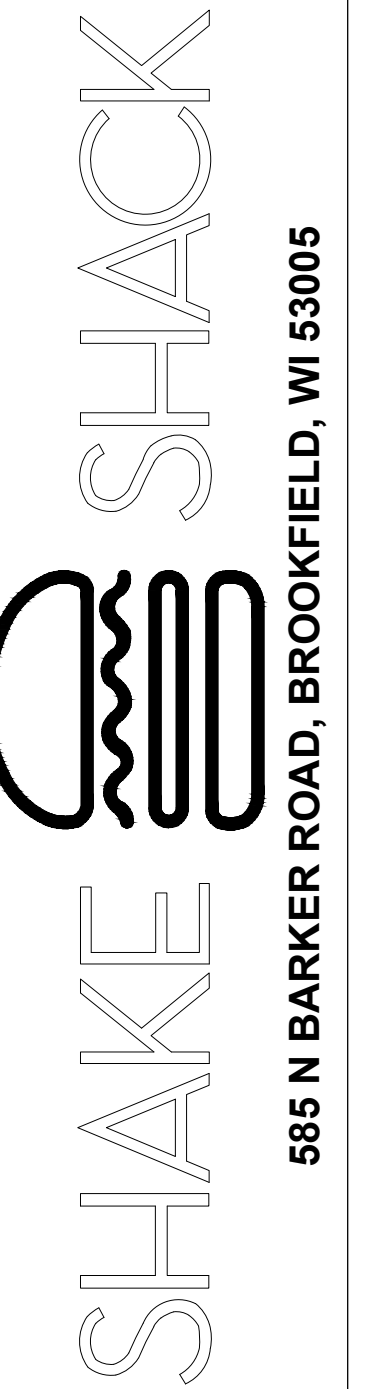
trimarkusa.com



830 North Blvd.  
Oak Park, Illinois  
60301

708-445-8400  
arialnc.com

ARIA GROUP ARCHITECTS, INC.



585 N BARKER ROAD, BROOKFIELD, WI 53005

SHACK #1387

FIELD VERIFICATION  
Contractor shall verify all figured dimensions and conditions at the job site and notify Aria Group Architects, Inc. of any dimensional errors, omissions or discrepancies before beginning or fabricating any work. Do not scale these drawings.

COPYRIGHT  
Aria Group Architects, Inc. shall retain all common law, statutory and other reserved rights. These drawings and related documents shall not be duplicated, disclosed or otherwise without written consent of Aria Group Architects, Inc.

NO.	DATE	REMARKS
1	04/29/2022	ISSUE FOR CONSTRUCTION
	12/16/2021	ISSUE FOR PERMIT / BID
	08/02/2021	ISSUE FOR LL REVIEW
REVISIONS		

NO.	DATE	REMARKS
REVISIONS		

Drawing Title  
KITCHEN EQUIPMENT  
UTILITY SCHEDULES

Job No.  
214686

Scale  
As indicated

Sheet No.

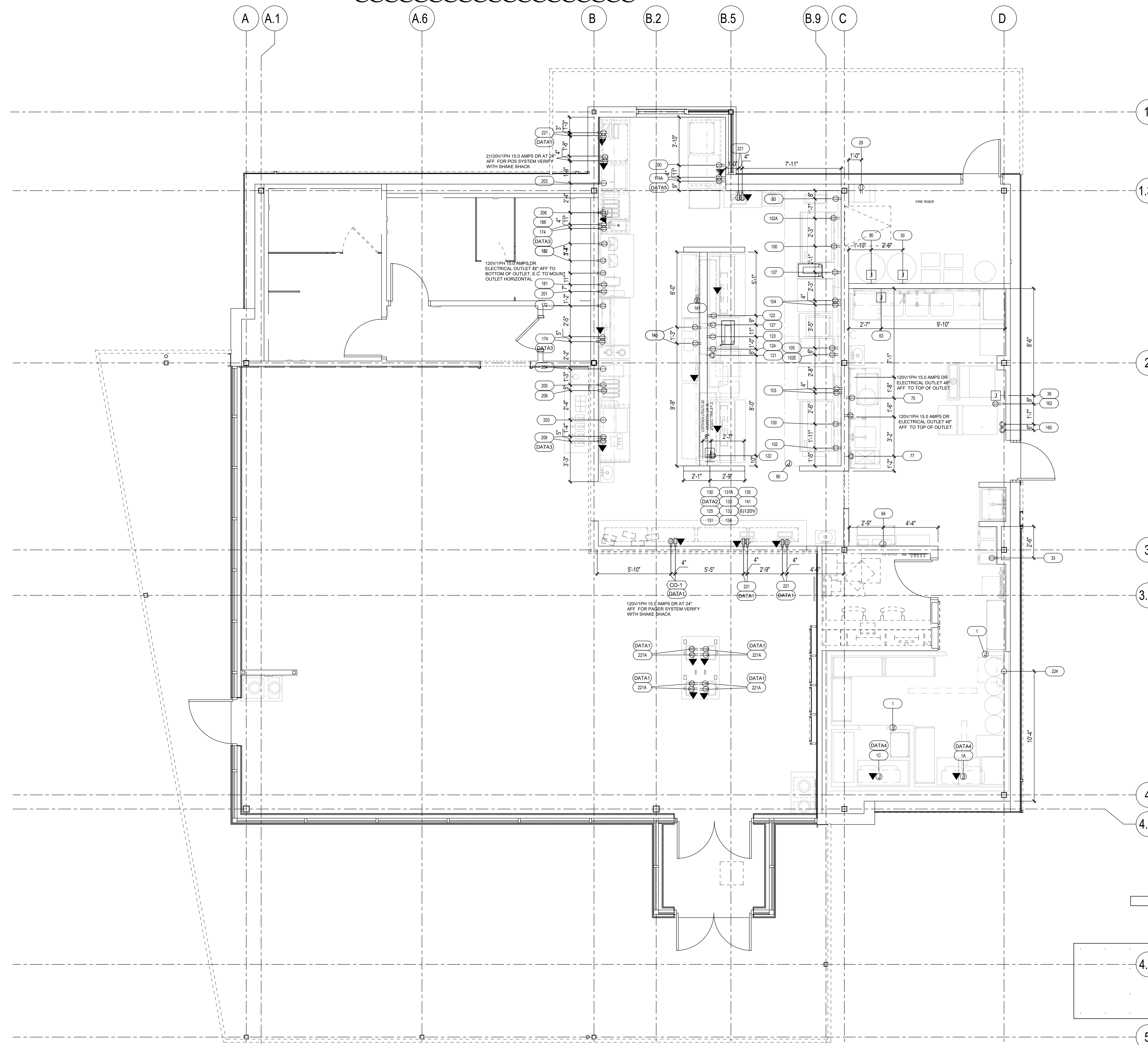
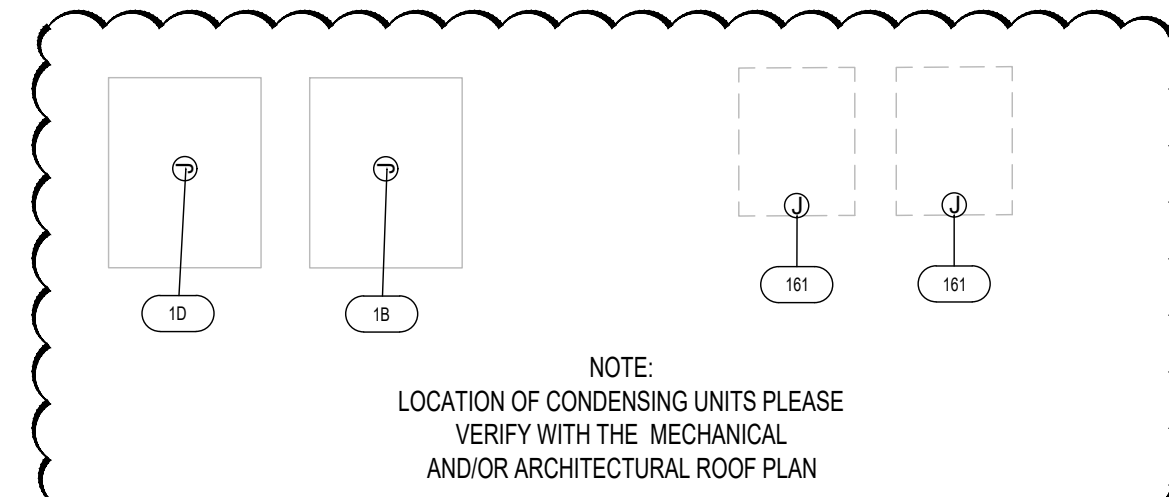
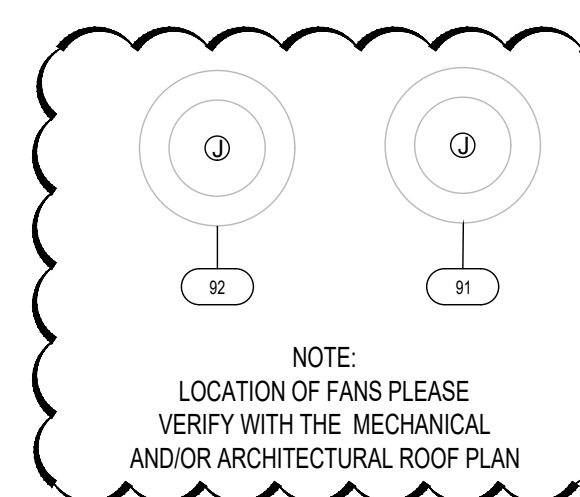
Drawn  
MSH

Date  
06/14/2021

K603

ENG. REV	ITEM NO.	QTY	ITEM DESCRIPTION	VOLTS	PH	AMPS	HP	KW	CONN.	NEMA	CONN. HGT	ELEC REMARKS	ITEM NO.
	1	1	WALKIN COOLER/FREEZER COMBO	2120	1	(2) 15.0			JBH	D.F.A.		E.C. TO MOUNT AND INTERWIRE FROM SWITCH TO FLOURSCENT LIGHT FIXTURES.	1
	1A	1	COOLER EVAPORATOR	115	1	15.0			JBH	D.F.A.		INFORMATION SHOWN IS FOR COORDINATION AND IS TO BE VERIFIED WITH THE SHOP DRAWINGS. E.C. TO PROVIDE A DATA PORT WIRED BACK TO OFFICE.	1A
	1B	1	AIR-COOLED COOLER CONDENSING UNIT	208	3	20.0			JBH	DRFY		INFORMATION SHOWN IS FOR COORDINATION AND IS TO BE VERIFIED WITH THE SHOP DRAWINGS.	1B
	1C	1	FREEZER EVAPORATOR	208	1	15.0			JBH	D.F.A.		INFORMATION SHOWN IS FOR COORDINATION AND IS TO BE VERIFIED WITH THE SHOP DRAWINGS.	1C
	1D	1	AIR-COOLED FREEZER CONDENSING UNIT	208	1	20.0			JBH	DRFY		INFORMATION SHOWN IS FOR COORDINATION AND IS TO BE VERIFIED WITH THE SHOP DRAWINGS.	1D
	29	1	NITROGEN TANK	115	1	20.0			DR	5-20P	84"	OUTLET TO BE 84" AFF TO TOP OF OUTLET.	29
	30	2	RTI OIL TANK	110	1	20.0			JBW		60"	OUTLET TO BE 60" AFF TO TOP OF OUTLET.	30
	33	1	BAG N BOX	120	1	20.0			DR	5-20P	60"	E.C. TO VERIFY ALL UTILITY REQUIREMENTS WITH THE SODA VENDOR PRIOR TO ROUGHING IN. OUTLET TO BE 60" AFF TO TOP OF OUTLET.	33
	36	1	ICE CUBER	208-230	1	14.2			JBW		84"	TO TOP OF JUNCTION BOX.	36
	63	1	DISHWASHER, UNDERCOUNTER	208	3	21.3	1	9.0	JBW		16"	E.C. SHALL VERIFY DISHWASHER PHASE WITH G.C. PRIOR TO ROUGH-IN, AS REQUIRED. REQUIRES 4 WIRES AND GROUND CONNECTION. OUTLET TO BE 16" AFF TO TOP OF OUTLET.	63
	75	1	MIXER, HAND	120	1	5.5	1	0.66	DR	5-15P	48"	OUTLET TO BE 48" AFF TO TOP OF OUTLET.	75
	77	1	RE THERMALIZER, WATER TANK, ELECTRIC	208	1	29.8		6.0	SP	L6-30P		OUTLET TO BE 48" AFF TO TOP OF OUTLET.	77
	90	1	EXHAUST HOOD	X	X	X			JBH	D.F.A.		STUB FROM CEILING. TO BE VERIFIED WITH OWNER PRIOR TO ROUGH-IN.	90
	91	1	EXHAUST FAN	X	X	X			X			STUB FROM ROOF. TO BE VERIFIED WITH OWNER PRIOR TO ROUGH-IN.	91
	92	1	SUPPLY FAN	X	X	X			X			STUB FROM ROOF. TO BE VERIFIED WITH OWNER PRIOR TO ROUGH-IN.	92
	93	1	GREASE COLLECTOR	120	1	15.0			DR	5-20P	16"	OUTLET TO BE 16" AFF TO TOP OF OUTLET.	93
	94	1	ANSUL	120	1	20.0			JBH	D.F.A.		STUB FROM CEILING. TO BE VERIFIED WITH OWNER PRIOR TO ROUGH-IN. E.C. TO INTERWIRE TO BUILDING ALARM SYSTEM AND FOR EQUIPMENT SHUT DOWN.	94
	1	100	2	GAS COUNTERTOP GRIDDLE	120	1	2.0		DR	5-15P	16"	OUTLET TO BE 16" AFF TO TOP OF OUTLET.	100
	1	102	1	EQUIPMENT STAND, REFRIGERATED BASE	115	1	8.7	1/4	DR	5-15P	16"	OUTLET TO BE 16" AFF TO TOP OF OUTLET.	102
	1	102A	1	EQUIPMENT STAND, REFRIGERATED BASE	115	1	8.7	1/4	DR	5-15P	16"	OUTLET TO BE 16" AFF TO TOP OF OUTLET.	102A
	1	102E	1	EQUIPMENT STAND, REFRIGERATED BASE	115	1	8.7	1/4	DR	5-15P	16"	OUTLET TO BE 16" AFF TO TOP OF OUTLET.	102E
	1	103	1	FRYER BATTERY, GAS	115	1	1.7		DR	5-15P	16"	OUTLET TO BE 16" AFF TO TOP OF OUTLET.	103
	1	104	1	FRYER BATTERY, GAS	115	1	7.0	1/3	DR	5-15P	16"	FILTER VOLTAGE OUTLET TO BE 16" AFF TO TOP OF OUTLET.	104
	1	105	1	FRYER BATTERY, GAS	115	1	7.0	1/3	DR	5-15P	16"	FILTER VOLTAGE OUTLET TO BE 16" AFF TO TOP OF OUTLET.	105
	1	119	2	FRENCH FRY WARMER	120	1	9.1		DR	5-15P	16"	OUTLET TO BE 16" AFF TO TOP OF OUTLET.	119
	1	119A	1	TIMER, ELECTRONIC	90-240	1							119A
	1	119A	1	TIMER, ELECTRONIC	90-240	1							119A
	1	121	1	TOASTER, CONTACT GRILL, CONVEYOR TYPE	208	1	13.4		SP	6-20P	42"	ELECTRICAL OUTLET AT 42" AFF TO BOTTOM OF OUTLET. E.C. TO MOUNT OUTLET HORIZONTAL.	121
	1	122	2	MEGA TOP SANDWICH / SALAD PREPARATION REFRIGERATOR	115	1	9.0	1/3	DR	5-15P	16"	OUTLET TO BE 16" AFF TO TOP OF OUTLET.	122
	1	123	1	WORKTOP FREEZER	115	1	2.2	1/4	DR	5-15P	16"	OUTLET TO BE 16" AFF TO TOP OF OUTLET.	123
	1	124	1	FOOD TOPPING WARMER, COUNTERTOP	120	1	8.3		DR	5-15P	42"	ELECTRICAL OUTLET AT 42" AFF TO THE BOTTOM OF OUTLET. E.C. TO MOUNT OUTLET HORIZONTAL.	124
	1	125	2	KDS SCREEN	2120	1	15.0		DR	5-15P	VRFY	STUB OUT OF WALL WITH ITEM# 130, WIRE IN TOP CHASE. E.C. TO PROVIDE ISOLATED GROUND.	125
	1	127	2	FRENCH FRY WARMER	120	1	8.3		DR	5-15P			127
	1	130	1	OVERSHELF	120/208	1	20.0		JBW		76"	TO STUB OUT OF WALL WITH CIRCUITS FOR ITEM#S 125, 131, 133, 134, 135, 141, (6) 120V/1PH/20AMP CIRCUITS AND (6) DATA OUTLETS	130
	1	131	2	HEATED SHELF FOOD WARMER	120	1	7.9		JBH	VRFY		STUB OUT OF WALL WITH ITEM# 130, WIRE IN TOP CHASE.	131
	1	133	2	HEAT LAMP	120/208	1	16.0		JBH	VRFY		STUB OUT OF WALL WITH ITEM# 130, WIRE IN TOP CHASE.	133
	1	134	1	HEAT LAMP	120/208	1	8.2		JBH	VRFY		STUB OUT OF WALL WITH ITEM# 130, WIRE IN TOP CHASE.	134
	1	135	1	HEATED SHELF FOOD WARMER	120	1	3.5		JBH	VRFY		STUB OUT OF WALL WITH ITEM# 130, WIRE IN TOP CHASE.	135
	1	141	2	KDS SCREEN	2120	1	215.0		DR	5-15P	VRFY	STUB OUT OF WALL WITH ITEM# 130, WIRE IN TOP CHASE. E.C. TO PROVIDE ISOLATED GROUND.	141
	1	145	2	FOOD TOPPING WARMER, COUNTERTOP	120	1	4.3		DR	5-15P	42"	ELECTRICAL OUTLET AT 42" AFF TO BOTTOM OF OUTLET. E.C. TO MOUNT OUTLET HORIZONTAL.	145
	1	160	1	FROZEN CUSTARD MACHINE	208-230	3	15.0	3	SP		16"	(2) CIRCUITS WITH OVER CURRENT PROTECTION DEVICE. OUTLET TO BE 16" AFF TO TOP OF OUTLET. E.C. TO PROVIDE CORD AND PLUG PER LOCAL CODES. ALL TO BE VERIFIED WITH MANUFACTURERS SHOP DRAWINGS.	160
	1	161	2	REMOTE AIR-COOLED CONDENSER UNIT	208-230	3	15.0		JBH		6"		161
	1	162	1	FROZEN CUSTARD DIPPING CABINET	115	1	15.0		DR	5-15P	16"	OUTLET TO BE 16" AFF TO TOP OF OUTLET.	162
	1	172	1	DIPPING CABINET	115	1	6.5	1/3	DR	5-15P	16"	OUTLET TO BE 16" AFF TO TOP OF OUTLET.	172
	1	174	3	KDS SCREEN	2120	1	215.0		DR	5-15P	60"	OUTLET TO BE 60" AFF TO TOP OF OUTLET. E.C. TO PROVIDE ISOLATED GROUND.	174
	1	174A	1	KDS SCREEN	2120	1	215.0		DR	5-15P	42"	OUTLET TO BE 42" AFF TO BOTTOM OF OUTLET. E.C. TO PROVIDE ISOLATED GROUND.	174A
	1	181	1	BEVERAGE DISPENSER, ELECTRIC (COLD)	120	1	4.0		DR	5-15P	42"	ELECTRICAL OUTLET 42" AFF TO BOTTOM OF OUTLET. E.C. TO MOUNT OUTLET HORIZONTAL.	181
	1	182	3	MIXER, DRINK / BAR	120	1	(3) 1/3	0.9	DR	5-15P	42"	ELECTRICAL OUTLET 42" AFF TO BOTTOM OF OUTLET. E.C. TO MOUNT OUTLET HORIZONTAL.	182
	1	188	1	DISHWASHER, UNDERCOUNTER	208	3	21.3	1	JBW		16"	E.C. SHALL VERIFY DISHWASHER PHASE WITH G.C. PRIOR TO ROUGH-IN, AS REQUIRED. REQUIRES 4 WIRES AND GROUND CONNECTION. OUTLET TO BE 16" AFF TO TOP OF OUTLET.	188
	1	200	2	UNDERCOUNTER REFRIGERATOR	115	1	2.4	1/4	DR	5-15P	16"	OUTLET TO BE 16" AFF TO TOP OF OUTLET.	200
	1	201	1	WORKTOP FREEZER	115	1	5.25	1/2	DR	5-15P	16"	OUTLET TO BE 16" AFF TO TOP OF OUTLET.	201
	1	203	2	ICE CHEST & SODA TOWER	120	1	15.0		SR	5-20P	48"	E.C. TO VERIFY ALL UTILITY REQUIREMENTS WITH THE SODA VENDOR.	203
	1	204	1	TEA BREWER	120	1	14.4		SR	5-20P	42"	ELECTRICAL OUTLET 42" AFF TO BOTTOM OF OUTLET. E.C. TO MOUNT OUTLET HORIZONTAL.	204
	1	206	2	BEVERAGE DISPENSER, ELECTRIC (COLD)	115	1	6.0	1/6	DR	5-15P	42"	ELECTRICAL OUTLET AT 42" AFF TO THE BOTTOM OF OUTLET. E.C. TO MOUNT OUTLET HORIZONTAL.	206
	1	208	1	KDS SCREEN	2120	1	215.0		DR	5-15P	60"	OUTLET TO BE 60" AFF TO TOP OF OUTLET. E.C. TO PROVIDE ISOLATED GROUND.	208
	1	221	3	P.O.S. TERMINALS	2120	1	215.0		DR	5-20P	18"	E.C. TO VERIFY EXACT LOCATION WITH CASH DRAWERS LOCATION WITH OWNER PRIOR TO ROUGHING IN. E.C. TO PROVIDE ISOLATED GROUND.	221
	1	221A	4	KIOSK TERMINAL	2120	1	215.0		DR	5-15P	X	X - E.C. TO VERIFY EXACT LOCATION WITH ELECTRICAL, ARCHITECTURAL AND SHAKE SHACK PRIOR TO ROUGHING IN. E.C. TO PROVIDE ISOLATED GROUND.	221A
	1	224	1	DRAFT BEER SYSTEM POWER PACK	120	1	12.0	1/3	SR	5-20P	114"	E.C. TO VERIFY FINAL LOCATION WITH THE G.C. E.C. TO PROVIDE ISOLATED GROUND.	224

ENG. REV	ITEM NO.	QTY	ITEM DESCRIPTION	CW (IN)	CW CONN. HGT	HW (IN)	HW CONN. HGT	IW (IN)	DW (IN)	DW CONN. HGT	GAS SIZE	MBTUH	GAS CONN. HGT	PLUMBING REMARKS	ITEM NO.
	1A	1	COOLER EVAPORATOR					3/4"						P.C. TO RUN I.W. TO FLOOR SINK AS REQUIRED.	1A
	1C	1	FREEZER EVAPORATOR					3/4"						P.C. TO RUN I.W. TO FLOOR SINK AS REQUIRED.	1C
	33	1	BAG N BOX	1/2"	48"									P.C. TO RUN I.W. TO FLOOR SINK AS REQUIRED.	33
	34	1	WATER FILTRATION SYSTEM	3/4"	84"									P.C. TO INTERPIPE THIS COLD WATER CONNECTION FROM ITEM 34. VERIFY ALL UTILITY REQUIREMENTS WITH THE SODA VENDOR.	34
	36	1	ICE CUBER	3/8"	72"			1/2"						P.C. TO INTERPIPE COLD WATER CONNECTION FROM ITEM 34 WATER FILTER.	36
	36A	1	ICE BIN FOR ICE MACHINES					3/4"						E.C. TO RUN I.W. TO FLOOR SINK AS REQUIRED.	36A
	39	1	FLOOR TROUGH						4"					STUB AT 7-1/2" BELOW FINISHED FLOOR.	39
	40A	1	SERVICE FAUCET	1/2"	36"	1/2"	36"			1-1/2"	24"			P.C. TO RUN I.W. TO FLOOR SINK AS REQUIRED.	40A
	45	2	HAND SINK	1/2"	26"	1/2"	26"			1-1/2"	24"			P.C. TO RUN I.W. TO FLOOR SINK AS REQUIRED.	45
	45A	4	HAND SINK	1/2"	26"	1/2"	26"			1-1/2"	24"			P.C. TO RUN I.W. TO FLOOR SINK AS REQUIRED.	45A
	60	1	THREE (3) COMPARTMENT SINK					(3) 2"						P.C. TO MANIFOLD DRAINS AND BRANCH TO FLOOR SINK.	60
	60A	1	WALL / SPLASH MOUNT FAUCET	1/2"	16"	1/2"	16"							P.C. TO RUN I.W. TO FLOOR SINK AS REQUIRED.	60A
	63	1	DISHWASHER, UNDERCOUNTER			3/4"	18"	1"						P.C. TO INTERPIPE TO FLOOR SINK. 140 DEGREE HOT WATER REQUIRED FROM BUILDING WATER SUPPLY.	63
	70	1	PREP TABLE					2"						P.C. TO RUN I.W. TO FLOOR SINK AS REQUIRED.	70
	70A	1	DECK MOUNT FAUCET	1/2"	16"	1/2"	16"							P.C. TO RUN I.W. TO FLOOR SINK AS REQUIRED.	70A
	77	1	RE THERMALIZER, WATER TANK, ELECTRIC					3/8"						P.C. TO RUN I.W. TO FLOOR SINK AS REQUIRED.	77
	1	100	2	GAS COUNTERTOP GRIDDLE							3/4"	108.0	18"	P.C. TO CONNECT THRU QUICK DISCONNECT HOSE.	100
	1	103	1	FRYER BATTERY, GAS							1"	160.0	18"	P.C. TO CONNECT THRU QUICK DISCONNECT HOSE.	103
	1	104	1	FRYER BATTERY, GAS							1"	160.0	18"	P.C. TO CONNECT THRU QUICK DISCONNECT HOSE.	104
	1	160	1	FROZEN CUSTARD MACHINE	1/2"	12"			1-1/2"					P.C. TO SUPPLY REDUCER, SHUT-OFF VALVE AND INTERPIPE TO EQUIPMENT FITTINGS. P.C. TO RUN I.W. TO FLOOR SINK AS REQUIRED.	160
	1	162	1	FROZEN CUST											



- E-DATA1 DATA PORT AT 24" AFF TO TOP OF OUTLET FOR COMMUNICATING WITH RESTAURANT COMPUTER SYSTEM. E.C. TO PROVIDE AND INTERWIRE BACK TO OFFICE.
- E-DATA2 DATA PORT AT 74" AFF TO TOP OF OUTLET FOR COMMUNICATING WITH RESTAURANT COMPUTER SYSTEM. E.C. TO PROVIDE, INTERWIRE TO PORTS IN CHASE AND INTERWIRE BACK TO OFFICE.
- E-DATA3 DATA PORT AT 63" AFF TO TOP OF OUTLET FOR COMMUNICATING WITH RESTAURANT COMPUTER SYSTEM. E.C. TO PROVIDE AND INTERWIRE BACK TO OFFICE.
- E-DATA4 DATA PORT DFA AND CONNECT TO WALK IN REFRIGERATION FOR COMMUNICATING WITH RESTAURANT COMPUTER SYSTEM. E.C. TO PROVIDE AND INTERWIRE BACK TO OFFICE.
- E-DATA5 DATA PORT AT 42" AFF TO BOTTOM OF OUTLET FOR COMMUNICATING WITH RESTAURANT COMPUTER SYSTEM. E.C. TO PROVIDE AND INTERWIRE BACK TO OFFICE.

**FOODSERVICE ELECTRICAL ROUGH-IN PLAN**  
SCALE: 1/4" = 1' - 0"

FOODSERVICE DRAWINGS INDICATE ELECTRICAL ROUGH-IN/CONNECTION POINTS ONLY FOR EQUIPMENT SPECIFIED UNDER THE KITCHEN EQUIPMENT (SECTION 114000) CONTRACT. ANY ADDITIONAL ELECTRICAL REQUIREMENTS ARE NOT INDICATED ON FOODSERVICE DRAWINGS.

**ELECTRICAL LEGEND**

	DUPLEX RECEPTACLE
	SPECIAL PURPOSE RECEPTACLE
	JUNCTION BOX - WALL MOUNTED
	JUNCTION BOX - CEILING MOUNTED

SHAKE SHACK  
585 N BARKER ROAD, BROOKFIELD, WI 53005

SHACK #1387

**FIELD VERIFICATION**  
Contractor shall verify all figured dimensions and conditions at the job site and notify Aria Group Architects, Inc. of any dimensional errors, omissions or discrepancies before beginning or fabricating any work. Do not scale these drawings.

**COPYRIGHT**  
Aria Group Architects, Inc. shall retain all common law, statutory and other reserved rights. These drawings and related documents shall not be duplicated, disclosed or otherwise without written consent of Aria Group Architects, Inc.

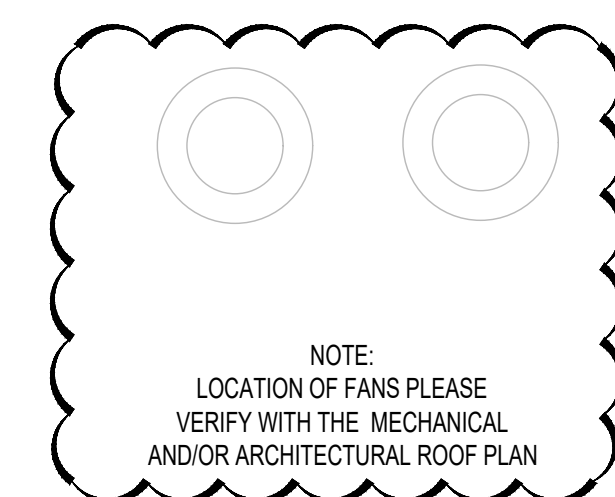
NO.	DATE	REMARKS
1	04/29/2022	ISSUE FOR CONSTRUCTION
	12/16/2021	ISSUE FOR PERMIT / BID
	08/02/2021	ISSUE FOR ILL REVIEW
REVISIONS		

Drawing Title  
**KITCHEN EQUIPMENT  
ELECTRICAL  
ROUGH-IN PLAN**

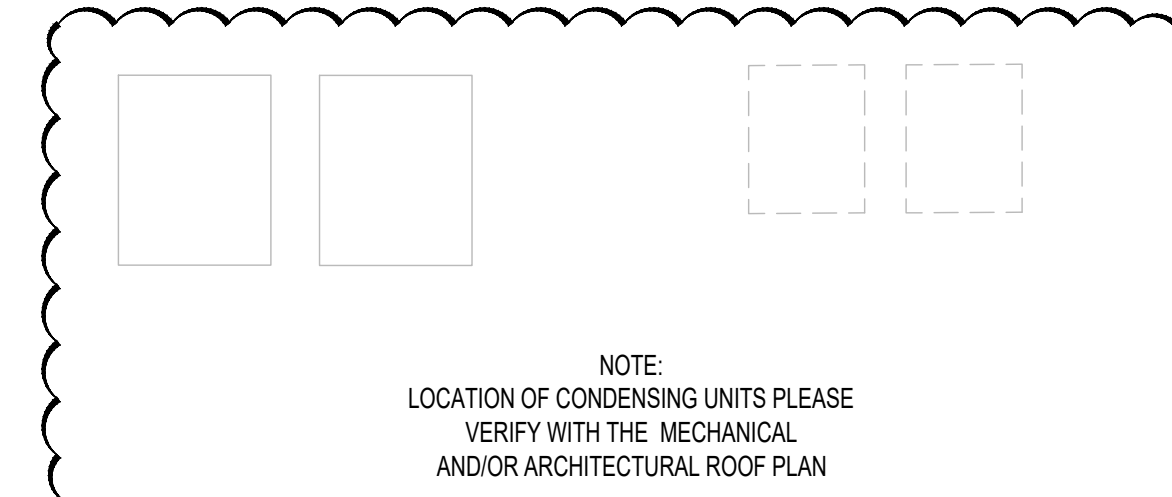
Job No. 214686 Drawn MSH

Scale As indicated Date 06/14/2021

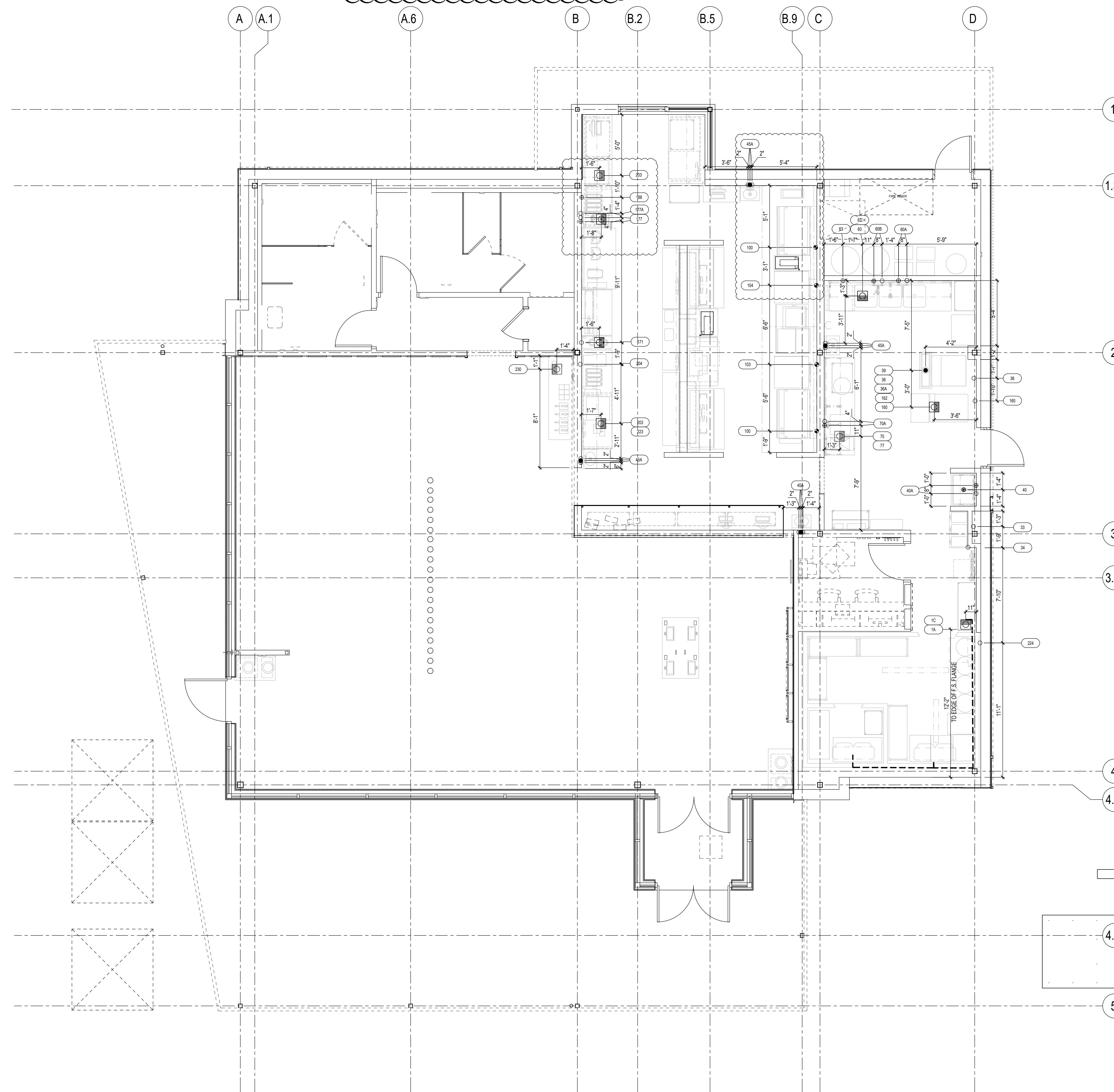
Sheet No.  
**KE101**



NOTE:  
LOCATION OF FANS PLEASE  
VERIFY WITH THE MECHANICAL  
AND/OR ARCHITECTURAL ROOF PLAN



NOTE:  
LOCATION OF CONDENSING UNITS PLEASE  
VERIFY WITH THE MECHANICAL  
AND/OR ARCHITECTURAL ROOF PLAN



**PLUMBING LEGEND**

- COLD WATER
- ⊕ HOT WATER
- DIRECT WASTE
- ⊞ FLOOR SINK - PARTIAL GRATE
- ◆ GAS DROP FROM MANIFOLD
- ⊕ FILTERED WATER

**FOODSERVICE PLUMBING SUPPLY ROUGH-IN PLAN**  
SCALE: 1/4" = 1' - 0"

FOODSERVICE DRAWINGS INDICATE PLUMBING ROUGH-IN/CONNECTION POINTS ONLY FOR EQUIPMENT SPECIFIED UNDER THE KITCHEN EQUIPMENT (SECTION 114000) CONTRACT. ANY ADDITIONAL PLUMBING REQUIREMENTS ARE NOT INDICATED ON FOODSERVICE DRAWINGS. THE PLUMBING CONTRACTOR (DIVISION 22) SHALL FURNISH AND INSTALL PRESSURE REDUCING VALVES, FLOW CONTROLS, BACK FLOW PREVENTION, RPZ (REDUCED PRESSURE ZONE) VALVES, WATER HAMMER ARRESTOR, GATE VALVES, FOR WATER CONNECTIONS AS REQUIRED PER LOCAL CODES.

SHAKE SHACK

585 N BARKER ROAD, BROOKFIELD, WI 53005

SHACK #1387

**FIELD VERIFICATION**  
Contractor shall verify all figured dimensions and conditions at the job site and notify Aria Group Architects, Inc. of any dimensional errors, omissions or discrepancies before beginning or fabricating any work. Do not scale these drawings.

**COPYRIGHT**  
Aria Group Architects, Inc. shall retain all common law, statutory and other reserved rights. These drawings and related documents shall not be duplicated, disclosed or otherwise used without written consent of Aria Group Architects, Inc.

NO.	DATE	REMARKS
1	04/29/2022	ISSUE FOR CONSTRUCTION
	12/16/2021	ISSUE FOR PERMIT / BID
	08/02/2021	ISSUE FOR LL REVIEW
REVISIONS		

Drawing Title  
**KITCHEN EQUIPMENT  
PLUMBING  
ROUGH-IN PLAN**

Job No. 214686 Drawn MSH

Scale As indicated Date 06/14/2021

Sheet No.  
**KP101**