

Report By:

National TAB
1329 E. KEMPER ROAD
SUITE 4210
CINCINNATI, OH 45246

NATIONAL

TAB

Comfort. Under control.

Report: Commissioning

Date: 3/16/2022

PROJECT

Shake Shack (Chesterfield) - Commissioning

17312 Chesterfield Airport Road

Chesterfield, MO 63005

Client

24 Union Square East, 5th Fl

New York, NY 10003



National TAB

Project: Shake Shack (Chesterfield) - Commissioning

Table Of Contents

Section	Page #
Summary of In-Wall FIV inspection	3
Issues	4
Checklist Data	7





Comfort. Under control.

Shake Shack – Chesterfield, MO (FIV) In-Wall Inspection Summary (March 16th, 2022)

Report includes: In wall field inspection report for domestic plumbing, drain and vent lines, electrical junctions.

Inspection comments: Electrical panel breakers are recessed into wall, but were not completed at time of inspection, the panels will be inspected during the above ceiling inspection.

Issues: A roof inspection was completed as a partial review since only the HVAC and ventilation systems had been set. No other rough-in had been started at the time of this inspection. The preliminary roof inspection yielded two observations: DOAS outdoor coil had incurred damage and was installed without a hail guard, The grease exhaust fans discharge height was measured at 36" above the finished roof. Code requires a minimum 40" minimum discharge height of grease exhaust fans.

Comments: Plumbing and electrical contractors satisfied all conditions of installation for accuracy to plan, professional installation, and adherence to specifications. There were no issues found within the wall inspections.



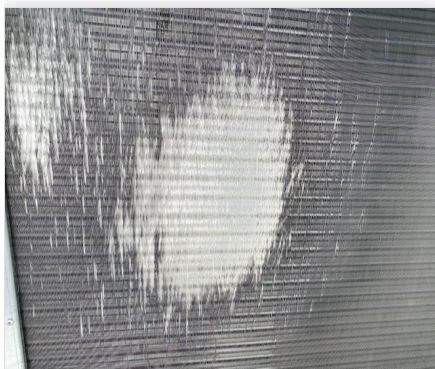


Shake Shack (Chesterfield) - Commissioning

Project Issue Information

Issue Name : MC: Kitchen DOAS - Condenser Coil Damage, missing hail guard
Description : Unit's condenser coil has damage to fins on face lower left end of coil. Unit was not provided with hail gaurd
Created By : National TAB **Assigned To :** Crystal Heating & Cooling - Billy Gray
Status : Open
Originated Date : 03/06/2022 - Dan Hertenstein - National TAB

Project Issue File Details



damaged_DOAS_outdoor_coil.jpg

Project Issue Response Details

- **03/10/2022** **Crystal Heating & Cooling - Billy Gray**
 - Kitchen DOAS is owner supplied and had coil damage on delivery. No hail gaurds were shipped with unit, also nothing in the notes calling for hail gaurd.



Shake Shack (Chesterfield) - Commissioning

CheckList Information

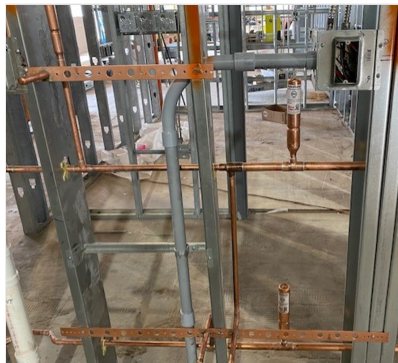
Name :	(FIV) - Domestic Plumbing In Wall	Status :	NotSubmitted
Assigned Organization :	National TAB	Asset :	
Requesting Organization :	National TAB		

CheckList Item Details

HW, CW, HWR lines are routed to designated areas	Yes
--------------------------------------------------	-----

Line sizes are as shown on plans	Yes
----------------------------------	-----

CW, FW, HW, HWR lines are type "L" hard temper copper tube with wrought copper fittings and soldered connections.	Yes
-------------------------------------------------------------------------------------------------------------------	-----



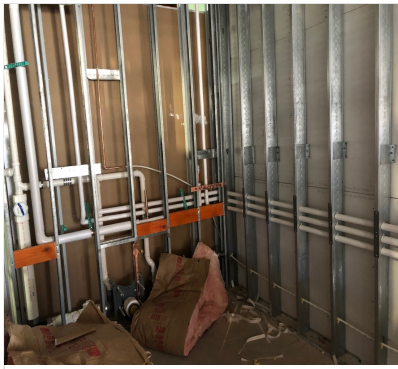
Hard_temper_copper_tubes_soldered.PNG

From circulated hot water branch or main to termination of hot water fixture supply: For 1/2" HW supply pipe to individual lavatories, provide a maximum length of 2ft (Restroom Hand sinks)	Yes
----------------------------------------------------------------------------------------------------------------------------------------------------------------------------------------------	-----

Provide free standing internal wall supports for all plumbing wall hung fixtures to prevent pull-out from the wall	Yes
--------------------------------------------------------------------------------------------------------------------	-----

Escutcheon bracing is installed to support all piping at through wall locations	Yes
---------------------------------------------------------------------------------	-----





in_wall_insulation_2.jpg

All copper lines within internal walls have been insulated per specification

Yes



in_wall_insulation_1.jpg

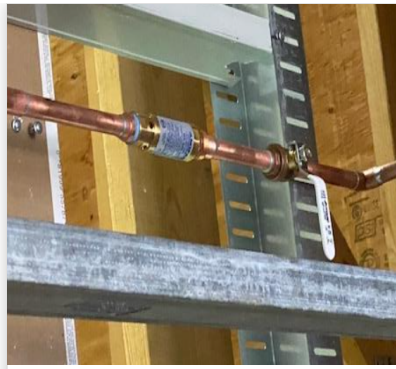
Gravity Trap Primer valve, shut-off valve, and water line has been installed and routed to each restroom floor drain. Access points will be available to ensure valves are accessible for future maintenance

Yes





**GRAVITY_LINE_TO_BELOW_S
LAB_TRAP.PNG**



**gravity_primer_valve_installe
d.PNG**

Prior to closing the walls, hydrostatic pressure test all domestic water lines to ensure no leakage, test shall be performed for 24 hours. The resultant pressure differential for this test period shall not exceed 10psig. Test Water piping to a 125 PSI hydrostatic pressure

All lines were tested for greater than 48 hours at a maximum gauge pressure of 100 PSI with no differential loss of pressure.



Shake Shack (Chesterfield) - Commissioning

CheckList Information

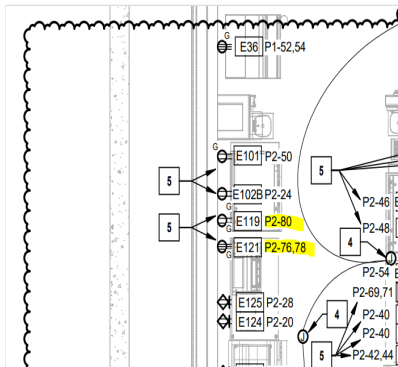
Name :	(FIV) - Electrical In-Wall Inspection	Status :	NotSubmitted
Assigned Organization :	National TAB	Asset :	
Requesting Organization :	National TAB		

CheckList Item Details

IN-WALL OUTLETS

All outlets and conduits have been installed in a professional manner, properly secured and supported within the wall	Yes
-----------------------------------------------------------------------------------------------------------------------	-----

In-Wall Junction boxes are installed per electrical and food equipment plan to serve appliances, office equipment, Indoor signs and other necessary functions (no missing outlets)	All in-Wall outlets (excluding dining) validated and approved. See attached photo for circuit label correction for planned labeled circuits P2-80 (Item E119) and P2-76,78 (Item E121). GC spoke with electrician and indicated labeling of CB's will change but power and phase loading will remain as designed
------------------------------------------------------------------------------------------------------------------------------------------------------------------------------------	------------------------------------------------------------------------------------------------------------------------------------------------------------------------------------------------------------------------------------------------------------------------------------------------------------------



planned_circuit_layout_addendum_E.PNG



p2_circuit_boxes_top_view.jpg



p2_circuit_boxes.jpg

conduit is supported & installed neatly and securely within the wall cavity	Yes
-----------------------------------------------------------------------------	-----

All J-boxes are firmly secured in wall to prevent outlet form being pushed or pulled out of place	Yes
---------------------------------------------------------------------------------------------------	-----



All J-boxes are at correct horizontal locations and vertical elevations

Yes

All J-boxes are correct size (duplex or Quad) as per plan

Yes

J-boxes are marked with proper circuit label

Most boxes labeled, a few not marked but identified by location



Shake Shack (Chesterfield) - Commissioning

CheckList Information

Name :	(FIV) - In Wall Drain and Vent Lines	Status :	NotSubmitted
Assigned Organization :	MULTIPLE	Asset :	
Requesting Organization :	National TAB		

CheckList Item Details

ROOF DRAINS

Each horizontal drain line is installed at least 6" below the ceiling	Yes
Each drain drain is routed and sized per plan	Yes
Each drain is installed as per the required details	Yes
Each roof section has a negative pitch along all horizontal runs from it's assigned roof drain	Yes

SANITARY VENT LINES

Interior waste dish machine and toilet lines above slab shall be hubless cast iron soil pipe and fittings	Yes
-----------------------------------------------------------------------------------------------------------	-----



in_wall_cast_vent_line.jpg



Toilet_waste_cast_line.jpg

Interior plug clean-outs are installed in vents	Yes
-------------------------------------------------	-----

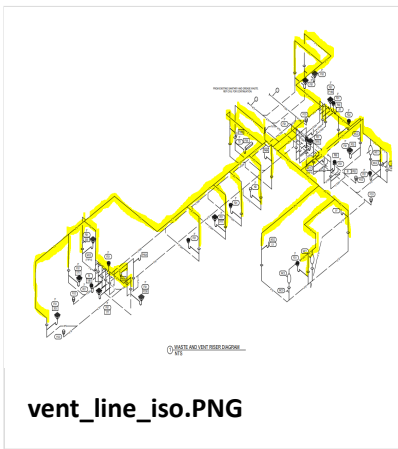




vent_line_plug_clean_outs.jpg

Vent lines are routed, sized per plan

Yes



vent_line_iso.PNG

Horizontal runs have a positive pitch toward the roof vent stack

Yes

