

**Report By:**

National TAB  
1329 E. KEMPER ROAD  
SUITE 4210  
CINCINNATI, OH 45246

**NATIONAL**

**TAB**

Comfort. Under control.

**Report: Commissioning**

**Date: 3/11/2022**

# PROJECT

## Shake Shack (Chesterfield) - Commissioning

17312 Chesterfield Airport Road

Chesterfield, MO 63005

### **Client**

24 Union Square East, 5th Fl

New York, NY 10003



# National TAB

Project: Shake Shack (Chesterfield) - Commissioning

## Table Of Contents

| Section        | Page # |
|----------------|--------|
| Checklist Data | 3      |
| Issues         | 7      |



## Shake Shack (Chesterfield) - Commissioning

### CheckList Information

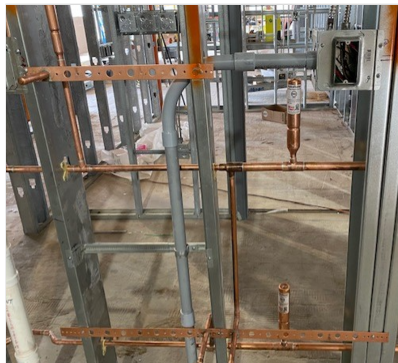
|                                  |                                   |                 |              |
|----------------------------------|-----------------------------------|-----------------|--------------|
| <b>Name :</b>                    | (FIV) - Domestic Plumbing In Wall | <b>Status :</b> | NotSubmitted |
| <b>Assigned Organization :</b>   | National TAB                      | <b>Asset :</b>  |              |
| <b>Requesting Organization :</b> | National TAB                      |                 |              |

### CheckList Item Details

|  |     |
|--|-----|
| HW, CW, HWR lines are routed to designated areas | Yes |
|--|-----|

|                                  |     |
|----------------------------------|-----|
| Line sizes are as shown on plans | Yes |
|----------------------------------|-----|

|   |     |
|---|-----|
| CW, FW, HW, HWR lines are type "L" hard temper copper tube with wrought copper fittings and soldered connections. | Yes |
|---|-----|



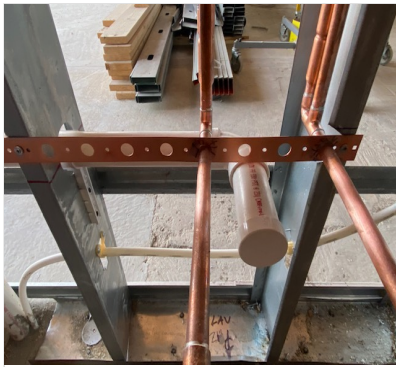
**Hard\_temper\_copper\_tubes\_soldered.PNG**

|  |     |
|--|-----|
| From circulated hot water branch or main to termination of hot water fixture supply: For 1/2" HW supply pipe to individual lavatories, provide a maximum length of 2ft (Restroom Hand sinks) | Yes |
|--|-----|

|  |     |
|--|-----|
| Provide free standing internal wall supports for all plumbing wall hung fixtures to prevent pull-out from the wall | Yes |
|--|-----|

|   |     |
|---|-----|
| Escutcheon bracing is installed to support all piping at through wall locations | Yes |
|---|-----|





**Escutcheon\_bracing\_at\_termination\_point.jpg**

Vertical bracing is adequately provided to support piping within the wall chase

Yes

Horizontal bracing is provided through studs by utilizing stud fastening supports

Yes



**HORIZONTAL\_PIPE\_BRACING\_TO\_STUD\_WALLS.PNG**

When horizontal in wall locations do not have the benefit of stud wall support proper devices are used to keep piping rigid

Yes

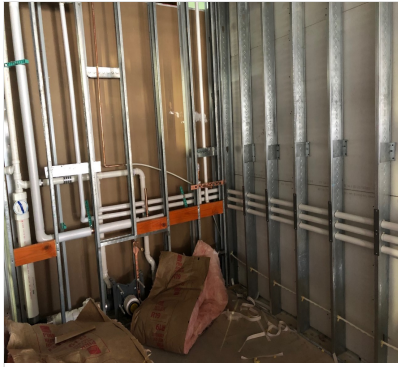
Water Hammers are installed before each hand shut-off valve

Yes

All lines in exterior walls are to be insulated with minimum 2" BATT insulation to prevent freezing

Yes





**in\_wall\_insulation\_2.jpg**

---

All copper lines within internal walls have been insulated per specification

Yes



**in\_wall\_insulation\_1.jpg**

---

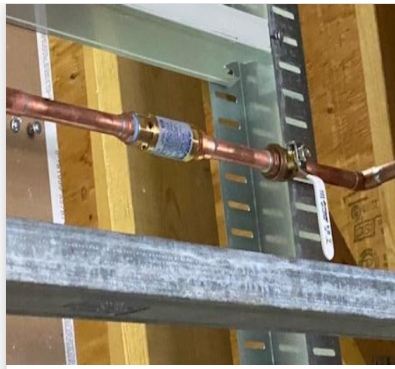
Gravity Trap Primer valve, shut-off valve, and water line has been installed and routed to each restroom floor drain. Access points will be available to ensure valves are accessible for future maintenance

Yes





**GRAVITY\_LINE\_TO\_BELOW\_S  
LAB\_TRAP.PNG**



**gravity\_primer\_valve\_installe  
d.PNG**

Prior to closing the walls, hydrostatic pressure test all domestic water lines to ensure no leakage, test shall be performed for 24 hours. The resultant pressure differential for this test period shall not exceed 10psig. Test Water piping to a 125 PSI hydrostatic pressure

All lines were tested for greater than 48 hours at a maximum gauge pressure of 100 PSI with no differential loss of pressure.



## Shake Shack (Chesterfield) - Commissioning

### Project Issue Information

**Issue Name :** EC: Mislabeled Electrical outlets - Item 80  
**Description :** Review to determine if this circuit has been correctly labeled or not  
**Created By :** National TAB **Assigned To :** Spiegelglass Construction - Rob Benwell  
**Status :** Open  
**Originated Date :** 03/06/2022 - Dan Hertenstein - National TAB

#### Project Issue Response Details

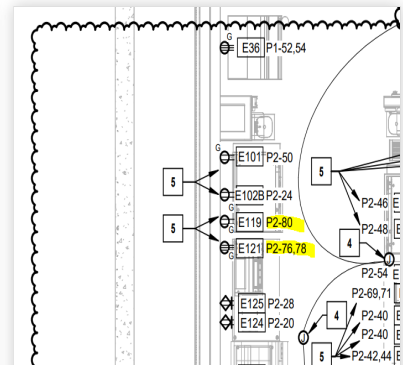
- **03/09/2022 National TAB - Dan Hertenstein**
  - P2-80 circuit missing or incorrectly labeled (P2-50), Validate it is assigned to item E119; P2-76,78 circuit is missing or incorrectly labeled (P2-54), validate it is assigned to Item E121



p2\_circuit\_boxes\_top\_view.jpg



p2\_circuit\_boxes.jpg



planned\_circuit\_layout\_addendum\_E.PNG



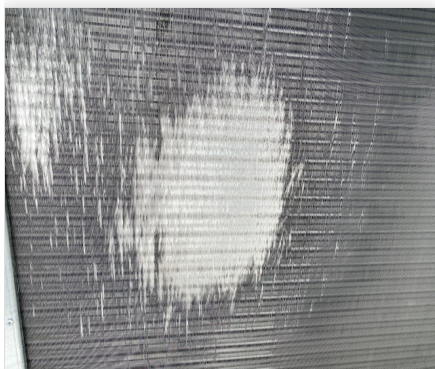


## Shake Shack (Chesterfield) - Commissioning

### Project Issue Information

**Issue Name :** MC: Kitchen DOAS - Condenser Coil Damage, missing hail guard  
**Description :** Unit's condenser coil has damage to fins on face lower left end of coil. Unit was not provided with hail guard  
**Created By :** National TAB **Assigned To :** Crystal Heating & Cooling - Billy Gray  
**Status :** Open  
**Originated Date :** 03/06/2022 - Dan Hertenstein - National TAB

#### Project Issue File Details



damaged\_DOAS\_outdoor\_coil.jpg

#### Project Issue Response Details

- **03/10/2022** **Crystal Heating & Cooling - Billy Gray**
  - Kitchen DOAS is owner supplied and had coil damage on delivery. No hail guards were shipped with unit, also nothing in the notes calling for hail guard.

