

DIFFUSER/REGISTER SCHEDULE									
MARK	SERVICE	TYPE	MODULE/FACE SIZE	BACKPAN	MFG. & MOD. NO.	BORDER TYPE	PATTERN	NOTES	COMMENTS
A	SUPPLY	SQUARE	24" X 24"	18" X 18"	SHOEMAKER FTD	3 - LAY-IN	4-WAY	1,2	
A2	SUPPLY	LINEAR	-	-	TITUS FL-20	TYPE 66			4' LENGTH, 2-SLOT @ 1"
B	RETURN	SQUARE	24" X 24"	SEE PLAN	SHOEMAKER 110	3 - LAY-IN			

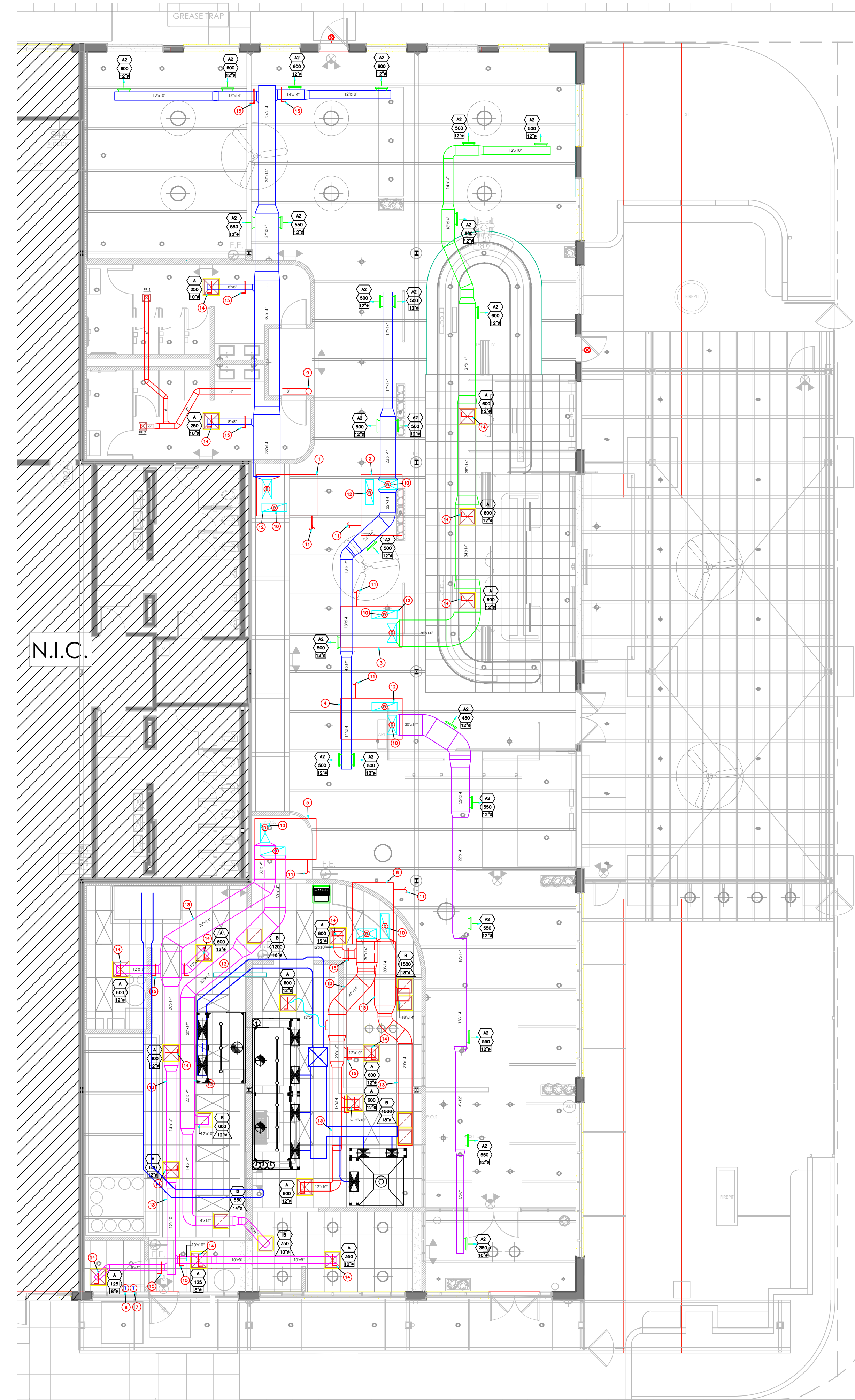
NOTES:
 1. PROVIDE WITH SHOEMAKER RADIAL DAMPER
 2. PROVIDE THE OPTIONAL BD ACTUATORS TO ALL SUPPLIES FOR OWNER TO BE ABLE TO ADJUST BOWTIE DAMPERS BY HAND BELOW CEILING.

DIFFUSER: 500 AIR QUANTITY (CFM), 12" DUCT CONNECTION (8"-0" MAX FOR FLEX DUCT)

REGISTER TYPE: 960 RETURN AIR QUANTITY (CFM), 22x22 CORE AREA

RESTROOM EXHAUST SCHEDULE										
UNIT NO.	MANUFACTURER	MODEL	CFM	PRESSURE DROP INCHES WC.	DRIVE	WATTS/HP	RPM	VOLTAGE	CONTROL	NOTES
EF-1	NUTONE OR EQUIVALENT	ILF-250	150 MAX	0.25	DIRECT	0.2 A.	-	120	②	①
EF-2	NUTONE OR EQUIVALENT	ILF-250	225 MAX	0.25	DIRECT	0.6 A.	-	120	②	①
HOOD	GREENHECK OR EQUIVALENT	GRSR-8	-	-	-	-	-	-	-	③

NOTES:
 ① COMPLETE FAN WITH INTEGRAL BACKRAFT DAMPER.
 ② CONTROLLED VIA WALL OCCUPANCY SWITCH IN RESTROOM.
 ③ COMPLETE WITH BUILT-IN FLANGE FOR CURBLESS INSTALL.



1 MECHANICAL PLAN
 SCALE: 1/8"=1'-0"
 0 5 10 20

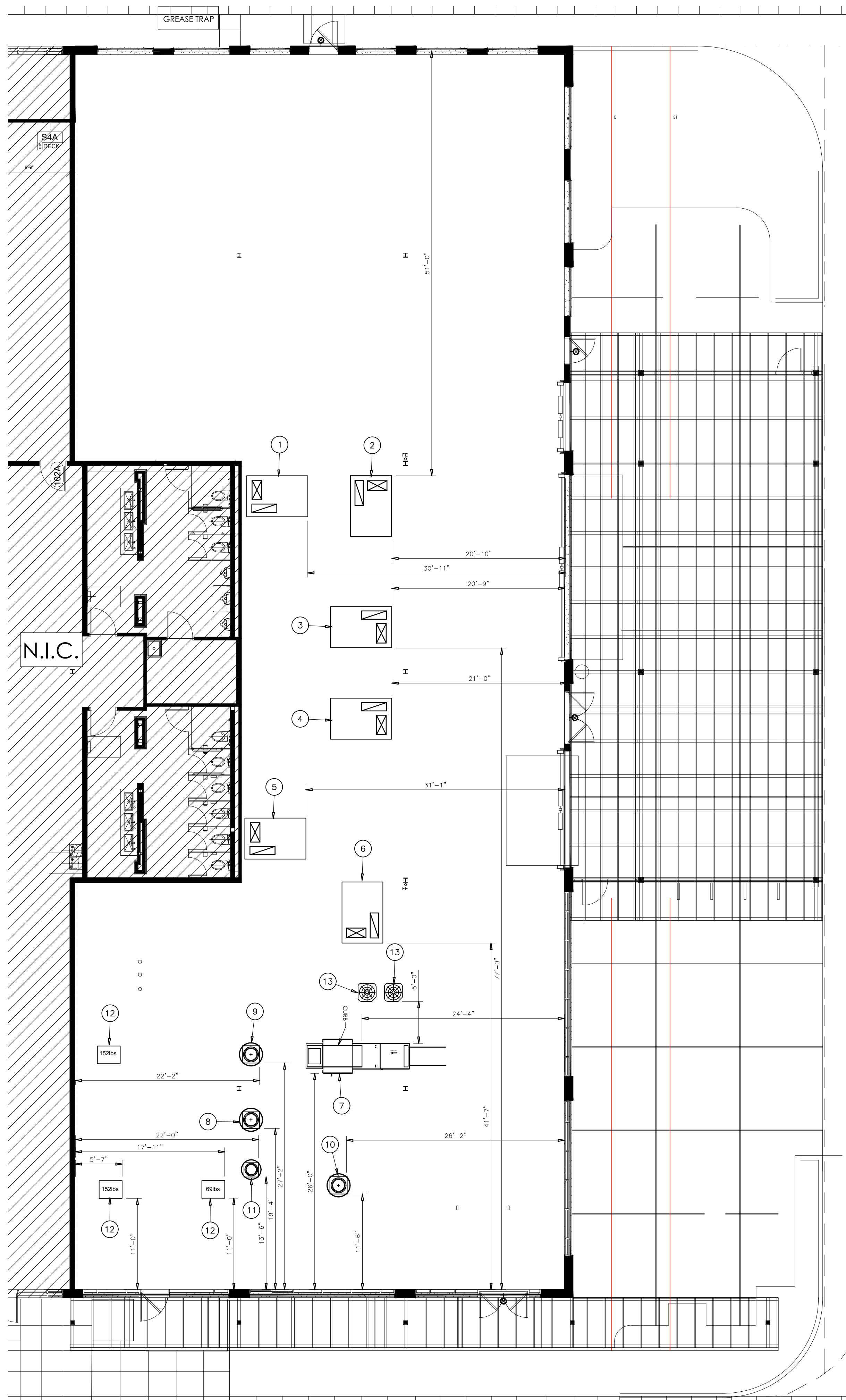
- GENERAL NOTES:**
- SEE SHEET M0.1 FOR HVAC SYMBOLS AND ABBREVIATIONS.
 - SEE SHEET M1.2 FOR HVAC SCHEDULES.
 - MECHANICAL CONTRACTOR SHALL PROVIDE ALL REQUIRED LABOR, MATERIAL, EQUIPMENT AND CONTRACTOR SERVICES NECESSARY FOR A COMPLETE INSTALLATION OF THE SYSTEMS REQUIRED IN FULL CONFORMITY WITH ALL APPLICABLE CODES AND ORDINANCES. FINISHED PROJECT SHALL BE FUNCTIONAL AND COMPLETE IN EVERY DETAIL INCLUDING ANY AND ALL SUB-CONTRACTED ITEMS.
 - MECHANICAL CONTRACTOR WILL BEAR ANY COST ARISING IN CORRECTING ANY NON-COMPLIANCE WITH REQUIREMENTS OF APPLICABLE CODES.
 - MECHANICAL CONTRACTOR SHALL COORDINATE SUPPLY REGISTERS, RETURN AIR GRILLS, ETC., TO AVOID CONFLICT OF ITEMS WITH OTHER TRADES. REFER TO ARCHITECTURAL REFLECTED CEILING PLANS.
 - REFER TO ARCHITECT'S REFLECTED CEILING PLAN FOR FINAL LOCATIONS OF AIR OUTLETS AND INLETS. ADJUST BRANCH DUCTWORK AS REQUIRED.
 - SEE SHEETS M1.3 AND M1.4 FOR HVAC DETAILS.
 - SEE SHEETS H1 THROUGH H2 AND CAPTIVE AIR DRAWINGS FOR KITCHEN HOOD DESIGN.
 - SEE KITCHEN EQUIPMENT DRAWINGS FOR ADDITIONAL WORK BY MECHANICAL CONTRACTOR.
 - VERIFY FINAL LOCATION OF ALL TYPE EH-1 HEATERS WITH OWNER PRIOR TO ROUGH-IN.
 - ALL SUPPLY AIR OUTLETS AND RETURN AIR INLETS SHALL HAVE A BALANCING DAMPER PROVIDED.

- PLAN NOTES:**
- NEW RTU #1 ON ROOF. BALANCE SUPPLY AIR TO 4000 CFM AND OUTSIDE AIR TO 800 CFM.
 - NEW RTU #2 ON ROOF. BALANCE SUPPLY AIR TO 4000 CFM AND OUTSIDE AIR TO 800 CFM.
 - NEW RTU #3 ON ROOF. BALANCE SUPPLY AIR TO 4000 CFM AND OUTSIDE AIR TO 800 CFM.
 - NEW RTU #4 ON ROOF. BALANCE SUPPLY AIR TO 3000 CFM AND OUTSIDE AIR TO 600 CFM.
 - NEW RTU #5 ON ROOF. BALANCE SUPPLY AIR TO 3000 CFM AND OUTSIDE AIR TO 600 CFM.
 - NEW RTU #6 ON ROOF. BALANCE SUPPLY AIR TO 3000 CFM AND OUTSIDE AIR TO 600 CFM.
 - KITCHEN A.C. UNIT CONTROLS BEHIND OFFICE DOOR. COORDINATE LOCATION WITH OWNER. VERIFY SENSOR LOCATION WITH OWNER. TYPICAL FOR 2.
 - DINING A.C. UNIT CONTROLS BEHIND OFFICE DOOR. COORDINATE LOCATION WITH OWNER. VERIFY SENSOR LOCATIONS WITH OWNER. TYPICAL FOR 4.
 - 8" TOILET EXHAUST DUCT, RUN UP THROUGH CHASE TO RELIEF HOOD ON ROOF. HOOD SHALL BE 10'-0" FROM ANY INTAKE.
 - FURNISH AND INSTALL SMOKE DETECTOR IN SUPPLY DUCT AS REQUIRED. THE UNIT SHALL SHUT DOWN UPON ACTIVATION.
 - TERMINATE CONDENSATE DRAIN TO SPLASH BLOCK ON ROOF. COORDINATE WITH PLUMBING CONTRACTOR.
 - RETURN AIR OPEN TO PLENUM.
 - DUCT SHALL BE KEPT TIGHT TO DECK.
 - MECHANICAL CONTRACTOR SHALL FURNISH AND INSTALL VOLUME DAMPER AT DIFFUSER AS REQUIRED.
 - MECHANICAL CONTRACTOR SHALL FURNISH AND INSTALL VOLUME DAMPER AT TRUNKLINE TAKE-OFF.

Scale: AS NOTED
 Date: XX/XX/XXXX
 Drawn By: [Signature]
 Checked By: [Signature]

SHIN-DIG
 1351 ROOSEVELT AVE, SUITE 103, INDIANAPOLIS, IN 46202

Revisions:
 Job Number:
 Drawing Name:
 MECHANICAL PLAN
 Drawing Number:
 M100



MECHANICAL ROOF PLAN
SCALE: 1/8"=1'-0"

PLAN NOTES:

- 1 NEW RTU #1 ON ROOF. CONTRACTOR SHALL SET NEW ROOF CURB PER CARRIER SELECTION. VERIFY EXACT LOCATION IN FIELD.
- 2 NEW RTU #2 ON ROOF. CONTRACTOR SHALL SET NEW ROOF CURB PER CARRIER SELECTION. VERIFY EXACT LOCATION IN FIELD.
- 3 NEW RTU #3 ON ROOF. CONTRACTOR SHALL SET NEW ROOF CURB PER CARRIER SELECTION. VERIFY EXACT LOCATION IN FIELD.
- 4 NEW RTU #4 ON ROOF. CONTRACTOR SHALL SET NEW ROOF CURB PER CARRIER SELECTION. VERIFY EXACT LOCATION IN FIELD.
- 5 NEW RTU #5 ON ROOF. CONTRACTOR SHALL SET NEW ROOF CURB PER CARRIER SELECTION. VERIFY EXACT LOCATION IN FIELD.
- 6 NEW RTU #6 ON ROOF. CONTRACTOR SHALL SET NEW ROOF CURB PER CARRIER SELECTION. VERIFY EXACT LOCATION IN FIELD.
- 7 NEW KMAA #1 ON ROOF. CONTRACTOR SHALL SET NEW ROOF CURB PER KITCHEN EQUIPMENT CONTRACTOR. VERIFY EXACT LOCATION IN FIELD. 1650 LBS TOTAL.
- 8 NEW KEF #1 ON ROOF. CONTRACTOR SHALL SET NEW EXHAUST FAN PER KITCHEN EQUIPMENT CONTRACTOR. VERIFY EXACT LOCATION IN FIELD. 150 LBS TOTAL.
- 9 NEW KEF #2 ON ROOF. CONTRACTOR SHALL SET NEW EXHAUST FAN PER KITCHEN EQUIPMENT CONTRACTOR. VERIFY EXACT LOCATION IN FIELD. 150 LBS TOTAL.
- 10 NEW KEF #3 ON ROOF. CONTRACTOR SHALL SET NEW EXHAUST FAN PER KITCHEN EQUIPMENT CONTRACTOR. VERIFY EXACT LOCATION IN FIELD. 150 LBS TOTAL.
- 11 NEW KEF #4 ON ROOF. CONTRACTOR SHALL SET NEW EXHAUST FAN PER KITCHEN EQUIPMENT CONTRACTOR. VERIFY EXACT LOCATION IN FIELD. 150 LBS TOTAL.
- 12 NEW COOLER/FREEZER CONDENSER UNIT ON ROOF. CONTRACTOR SHALL SET NEW CONDENSER PER KITCHEN EQUIPMENT CONTRACTOR. VERIFY EXACT LOCATION IN FIELD. 62 LBS TOTAL.
- 13 MAKE-UP AIR UNIT CONDENSER UNIT ON ROOF. CONDENSER SHALL BE SET 5'-0" MINIMUM FROM THE MAKE-UP AIR UNIT TO ALLOW FOR MAINTENANCE.

Notes:
AS NOTED
Date: XX/XX/XXX
Drawn By: KC
Checked By: MH

SHIN-DIG
1351 ROOSEVELT AVE, SUITE 103, INDIANAPOLIS, IN 46202

HVAC UNIT SCHEDULE

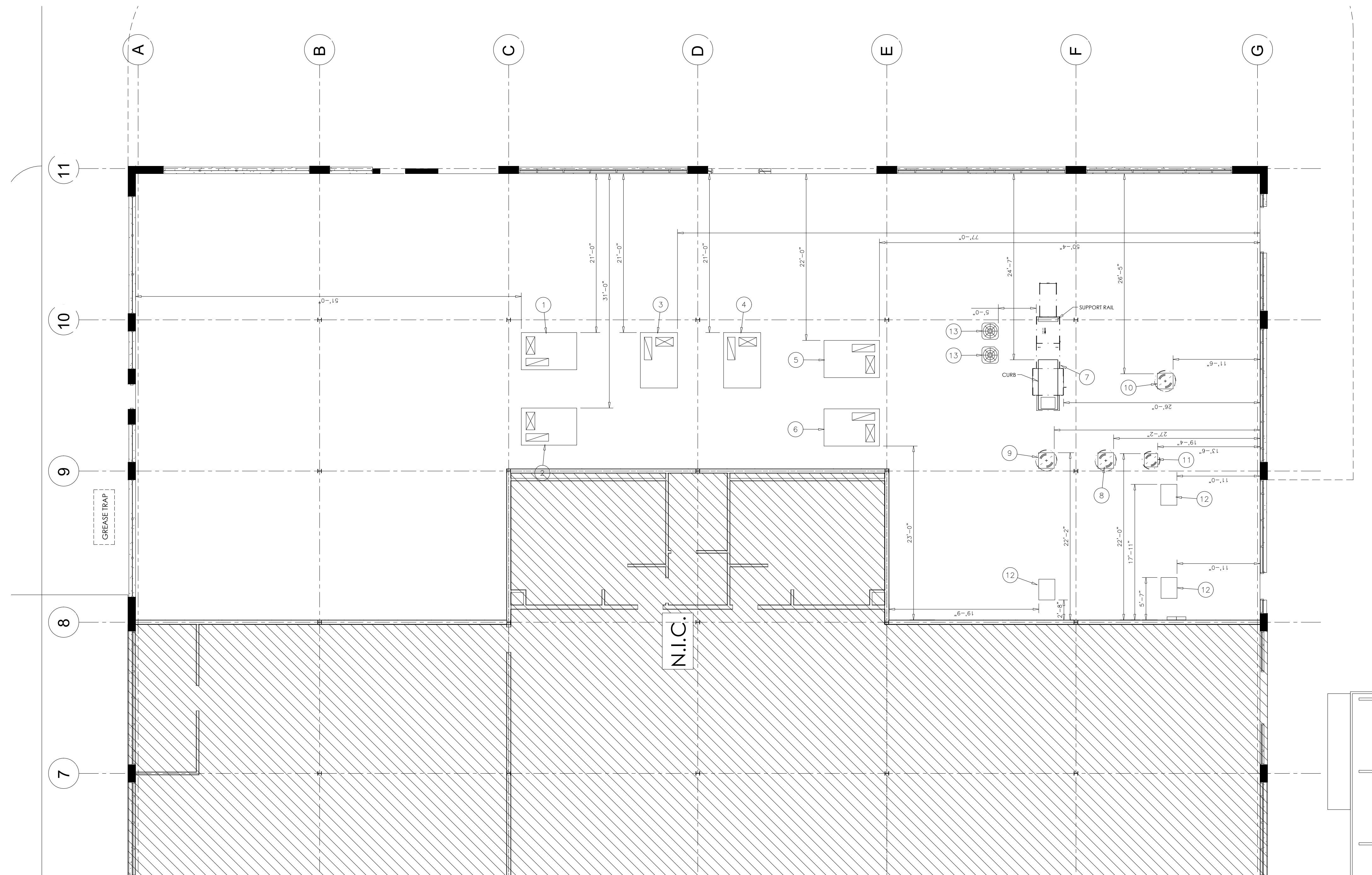
MARK	MFR. AND MODEL NO.	NOMINAL TONS	SA CFM	OSA CFM	COOLING CAPACITY			HEATING CAPACITY			ELECTRICAL						APPROX. OPER. WT. (LBS.)	REMARKS			
					SENSIBLE (BTUH)	TOTAL (BTUH)	EER/SEER	INPUT BTUH	OUTPUT BTUH	VOLT	PH.	EVAP. FAN FLA/HP	COMPRESSORS QTY.	CONDENSER FLA	FAN QTY.	MIN. CIRCUIT AMPS					
RTU #1	CARRIER 48FCM12K2M5-6W4FO	10.0	4000	600	81.98	119.9	-	250	205	208	3	-	2	15.6	110	2	-	1.5	45	1096	COMPLETE WITH TEMPERATURE ECONOMIZER WITH BAROMETRIC RELIEF AND LOUVERED HAIL GUARD
RTU #2	CARRIER 48FCM12K2M5-6W4FO	10.0	4000	600	81.98	119.9	-	250	205	208	3	-	2	15.6	110	2	-	1.5	45	1096	COMPLETE WITH TEMPERATURE ECONOMIZER WITH BAROMETRIC RELIEF AND LOUVERED HAIL GUARD
RTU #3	CARRIER 48FCM12K2M5-6W4FO	10.0	4000	600	81.98	119.9	-	250	205	208	3	-	2	15.6	110	2	-	1.5	45	1096	COMPLETE WITH TEMPERATURE ECONOMIZER WITH BAROMETRIC RELIEF AND LOUVERED HAIL GUARD
RTU #4	CARRIER 48FCM08K2M5-6W4FO	7.5	3000	450	66.02	90.47	-	224	181	208	3	-	2	13.1	123	2	-	1.5	39	1027	COMPLETE WITH TEMPERATURE ECONOMIZER WITH BAROMETRIC RELIEF AND LOUVERED HAIL GUARD
RTU #5	CARRIER 48FCM08K2M5-6W4FO	7.5	3000	450	66.02	90.47	-	125	103	208	3	-	2	13.1	123	2	-	1.5	39	997	COMPLETE WITH TEMPERATURE ECONOMIZER WITH BAROMETRIC RELIEF AND LOUVERED HAIL GUARD
RTU #6	CARRIER 48FCM08K2M5-6W4FO	7.5	3000	450	66.02	90.47	-	125	103	208	3	-	2	13.1	123	2	-	1.5	39	997	COMPLETE WITH TEMPERATURE ECONOMIZER WITH BAROMETRIC RELIEF AND LOUVERED HAIL GUARD

Revisions:

Job Number:

Drawing Name:
MECHANICAL ROOF PLAN

Drawing Number:
M200



PLAN NOTES:

- 1 NEW RTU #1 ON ROOF. CONTRACTOR SHALL SET NEW ROOF CURB PER CARRIER SELECTION. VERIFY EXACT LOCATION IN FIELD.
- 2 NEW RTU #2 ON ROOF. CONTRACTOR SHALL SET NEW ROOF CURB PER CARRIER SELECTION. VERIFY EXACT LOCATION IN FIELD.
- 3 NEW RTU #3 ON ROOF. CONTRACTOR SHALL SET NEW ROOF CURB PER CARRIER SELECTION. VERIFY EXACT LOCATION IN FIELD.
- 4 NEW RTU #4 ON ROOF. CONTRACTOR SHALL SET NEW ROOF CURB PER CARRIER SELECTION. VERIFY EXACT LOCATION IN FIELD.
- 5 NEW RTU #5 ON ROOF. CONTRACTOR SHALL SET NEW ROOF CURB PER CARRIER SELECTION. VERIFY EXACT LOCATION IN FIELD.
- 6 NEW RTU #6 ON ROOF. CONTRACTOR SHALL SET NEW ROOF CURB PER CARRIER SELECTION. VERIFY EXACT LOCATION IN FIELD.
- 7 NEW KUA #1 ON ROOF. CONTRACTOR SHALL SET NEW ROOF CURB PER KITCHEN EQUIPMENT CONTRACTOR. VERIFY EXACT LOCATION IN FIELD. 1650 LBS TOTAL.
- 8 NEW KEF #1 ON ROOF. CONTRACTOR SHALL SET NEW EXHAUST FAN PER KITCHEN EQUIPMENT CONTRACTOR. VERIFY EXACT LOCATION IN FIELD. 150 LBS TOTAL.
- 9 NEW KEF #2 ON ROOF. CONTRACTOR SHALL SET NEW EXHAUST FAN PER KITCHEN EQUIPMENT CONTRACTOR. VERIFY EXACT LOCATION IN FIELD. 150 LBS TOTAL.
- 10 NEW KEF #3 ON ROOF. CONTRACTOR SHALL SET NEW EXHAUST FAN PER KITCHEN EQUIPMENT CONTRACTOR. VERIFY EXACT LOCATION IN FIELD. 150 LBS TOTAL.
- 11 NEW KEF #4 ON ROOF. CONTRACTOR SHALL SET NEW EXHAUST FAN PER KITCHEN EQUIPMENT CONTRACTOR. VERIFY EXACT LOCATION IN FIELD. 150 LBS TOTAL.
- 12 NEW COOLER/FREEZER CONDENSER UNIT ON ROOF. CONTRACTOR SHALL SET NEW CONDENSER PER KITCHEN EQUIPMENT CONTRACTOR. VERIFY EXACT LOCATION IN FIELD. 62 LBS TOTAL.
- 13 MAKE-UP AIR UNIT CONDENSER UNIT ON ROOF. CONDENSER SHALL BE SET 5'-0" MINIMUM FROM THE MAKE-UP AIR UNIT TO ALLOW FOR MAINTENANCE.

MECHANICAL PLAN
SCALE: 1/8"=1'-0"

HVAC UNIT SCHEDULE

MARK	MFR. AND MODEL NO.	NOMINAL TONS	SA CFM	OSA CFM	COOLING CAPACITY		HEATING CAPACITY		ELECTRICAL						APPROX. OPER. WT. (LBS.)	REMARKS					
					SENSIBLE (BTUH)	TOTAL (BTUH)	EER/SEER	INPUT BTUH	OUTPUT BTUH	VOLT	PH.	EVAP. FAN FLA/HP	COMPRESSORS QTY.	CONDENSER FAN FLA/HP			MIN. CIRCUIT AMPS				
RTU #1	CARRIER 48FCM12K2M5-6W4F0	10.0	4000	600	81.98	119.9	-	250	205	208	3	-	2	15.6	110	2	-	1.5	45	1096	COMPLETE WITH TEMPERATURE ECONOMIZER WITH BAROMETRIC RELIEF AND LOUVERED HAIL GUARD
RTU #2	CARRIER 48FCM12K2M5-6W4F0	10.0	4000	600	81.98	119.9	-	250	205	208	3	-	2	15.6	110	2	-	1.5	45	1096	COMPLETE WITH TEMPERATURE ECONOMIZER WITH BAROMETRIC RELIEF AND LOUVERED HAIL GUARD
RTU #3	CARRIER 48FCM12K2M5-6W4F0	10.0	4000	600	81.98	119.9	-	250	205	208	3	-	2	15.6	110	2	-	1.5	45	1096	COMPLETE WITH TEMPERATURE ECONOMIZER WITH BAROMETRIC RELIEF AND LOUVERED HAIL GUARD
RTU #4	CARRIER 48FCM08K2M5-6W4F0	7.5	3000	450	66.02	90.47	-	224	181	208	3	-	2	13.1	123	2	-	1.5	39	1027	COMPLETE WITH TEMPERATURE ECONOMIZER WITH BAROMETRIC RELIEF AND LOUVERED HAIL GUARD
RTU #5	CARRIER 48FCM08K2M5-6W4F0	7.5	3000	450	66.02	90.47	-	125	103	208	3	-	2	13.1	123	2	-	1.5	39	997	COMPLETE WITH TEMPERATURE ECONOMIZER WITH BAROMETRIC RELIEF AND LOUVERED HAIL GUARD
RTU #6	CARRIER 48FCM08K2M5-6W4F0	7.5	3000	450	66.02	90.47	-	125	103	208	3	-	2	13.1	123	2	-	1.5	39	997	COMPLETE WITH TEMPERATURE ECONOMIZER WITH BAROMETRIC RELIEF AND LOUVERED HAIL GUARD

MATTHEW HOLBROOK, P.E.
6180 CARROLLTON AVENUE
INDIANAPOLIS IN 46220
E-MAIL KEVIN@KDCCONSULTINGINC.NET

Certified By:

Scale: A3 NOTED
Date: 04.06.2023
Drawn By: KC
Checked By: MH

THE SHINDIG

Revisions:

Job Number:

Drawing Name:

MECHANICAL PLAN-ROOF

Drawing Number: