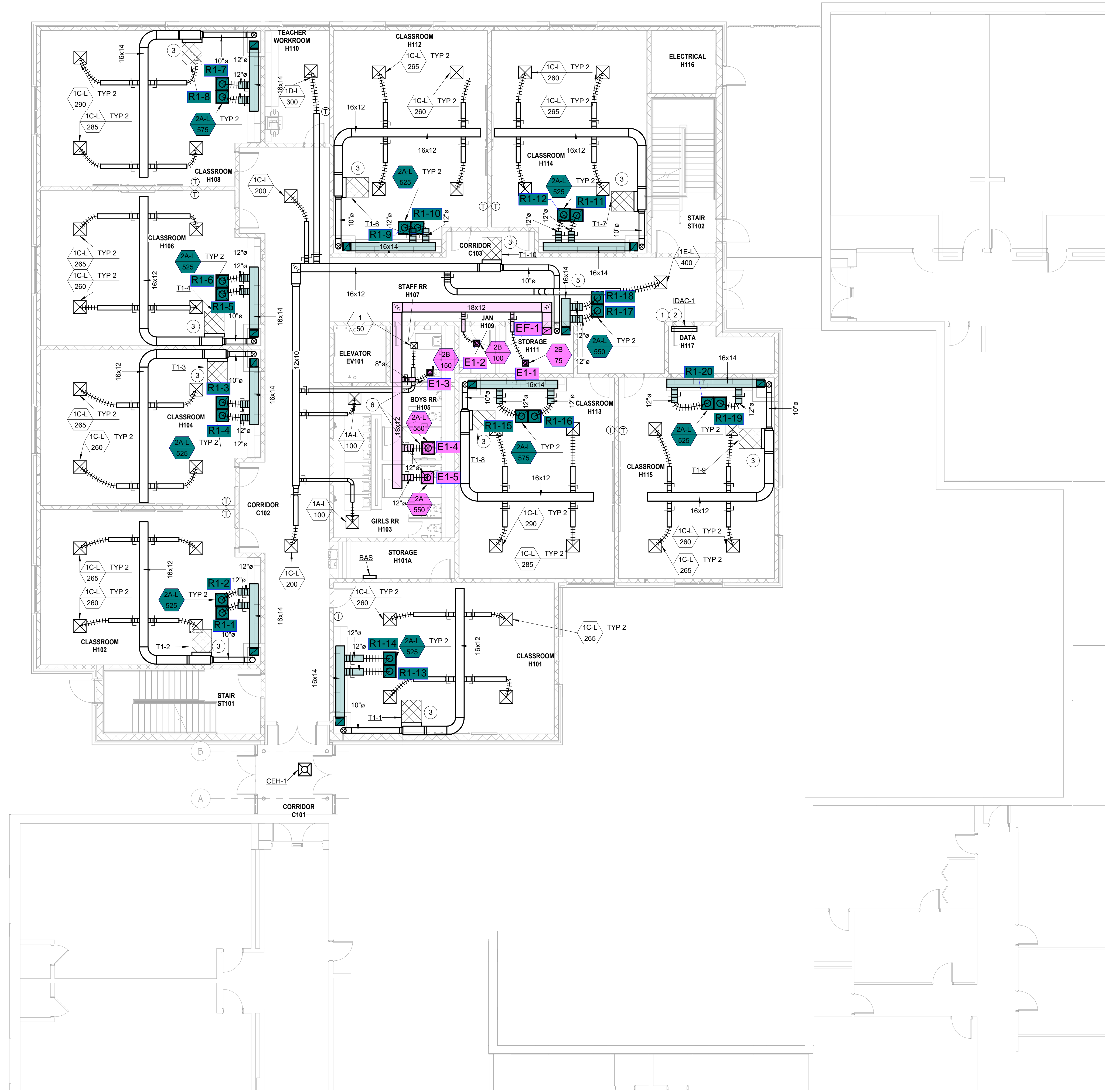


1 FIRST FLOOR PLAN - HVAC

SCALE: 1/8" = 1'-0"



GENERAL RENOVATION NOTES

- COORDINATE DUCT ROUTING WITH OTHER TRADES. ROUTE DUCTWORK TO MAINTAIN VAV BOX CLEARANCE.

HVAC KEYNOTES

- ROUTE CONDENSATE LINES TO FLOOR SINK IN JANITOR F110.
- ROUTE REFRIGERANT PIPING UP IN PIPE CURB TO CORRESPONDING UNIT ON ROOF.
- PROVIDE UNIT CLEARANCE. COORDINATE WITH OTHER TRADES.
- INSTALL BIPOLAR IONIZATION DEVICE AFTER VAV BOX. PROVIDE POWER FROM THE VAV BOX.
- OFFSET DUCTWORK AS REQUIRED. COORDINATE WITH STRUCTURE AND CEILING HEIGHT.
- PROVIDE CONCEALED REGULATORS IN HARD CEILING (TYPICAL).

LAKE MURRAY ELEMENTARY SCHOOL ADDITION

1531 THREE DOG ROAD
CHAPIN, SC 29036

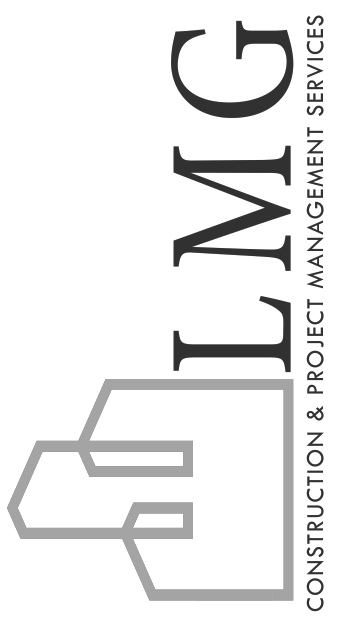
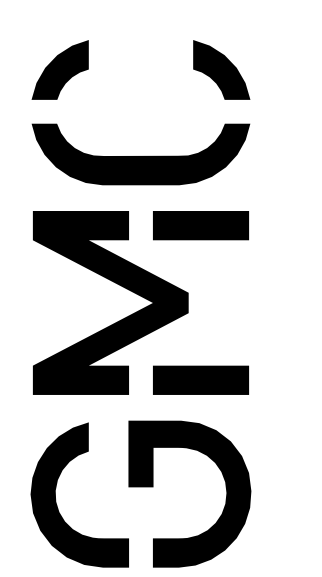
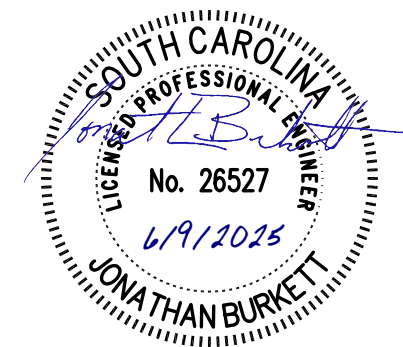
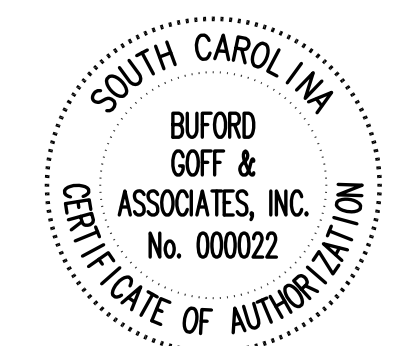
AGENCY 2 # [000000]
AGENCY 1 # [000000]
GMC # ACOL240007

ISSUE DATE
ISSUE FOR BID 06/09/2025

DRAWN BY: HJH
CHECKED BY: JEB

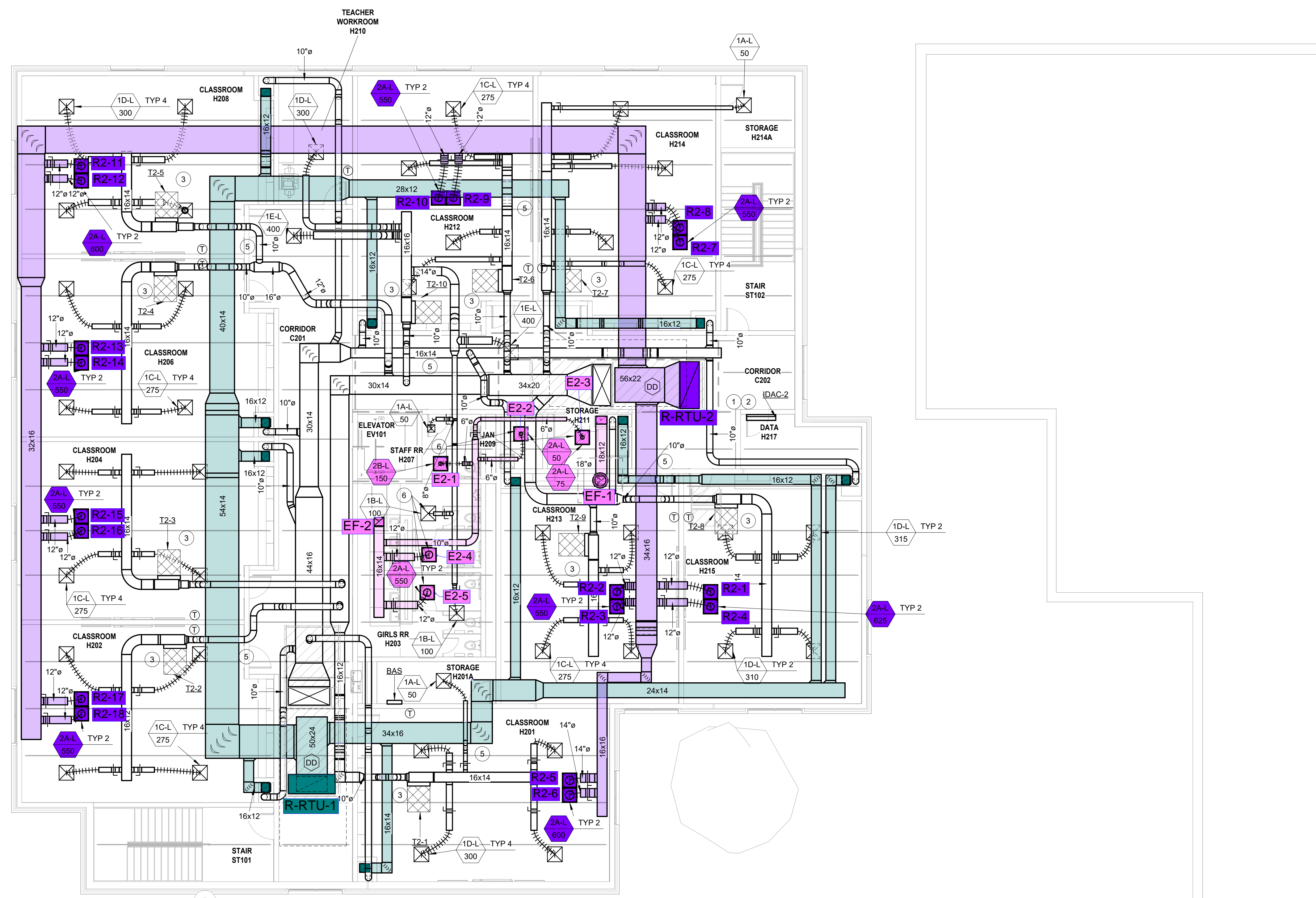
FIRST FLOOR PLAN -
HVAC

M1.01



1 SECOND FLOOR PLAN - HVAC

SCALE: 1/8" = 1'-0"



GENERAL RENOVATION NOTES

- COORDINATE DUCT ROUTING WITH OTHER TRADES. ROUTE DUCTWORK TO MAINTAIN VAV BOX CLEARANCE.

HVAC KEYNOTES

- ROUTE CONDENSATE LINES TO FLOOR SINK IN JANITOR F110.
- ROUTE REFRIGERANT PIPING UP IN PIPE CURB TO CORRESPONDING UNIT ON ROOF.
- PROVIDE UNIT CLEARANCE. COORDINATE WITH OTHER TRADES.
- INSTALL BI-POLAR IONIZATION DEVICE AFTER VAV BOX. PROVIDE POWER FROM THE VAV BOX.
- OFFSET DUCTWORK AS REQUIRED. COORDINATE WITH STRUCTURE AND CEILING HEIGHT.
- PROVIDE CONCEALED REGULATORS IN HARD CEILING (TYPICAL).

LAKE MURRAY ELEMENTARY SCHOOL ADDITION
1531 THREE DOG ROAD
CHAPIN, SC 29036

AGENCY 2 # [000000]
AGENCY 1 # [000000]
GMC # ACOL240007

SECOND FLOOR PLAN -
HVAC

M1.02

ISSUE DATE
ISSUE FOR BID 06/09/2025

DRAWN BY: HJH
CHECKED BY: JEB

AGENCY 2 # [000000]
AGENCY 1 # [000000]
GMC # ACOL240007

