



PLAN KEYNOTES

- DOOR SHALL BE UNDERCUT BY 3/4" FOR RETURN AIR PATH.
- DUCT SMOKE DETECTOR ON RETURN SIDE DUCT AND SHUTDOWN RELAY SHALL BE FURNISHED BY THE ELECTRICAL CONTRACTOR FOR INSTALLATION BY THE MECHANICAL CONTRACTOR. ALL WIRING SHALL BE BY THE ELECTRICAL CONTRACTOR. COORDINATE WITH ELECTRICAL DRAWING. GENERAL CONTRACTOR TO COORDINATE WORK BETWEEN THE ELECTRICAL AND MECHANICAL CONTRACTORS.
- MANUAL BALANCING DAMPER, TYPICAL.
- PROVIDE REMOTE TEMPERATURE SENSOR AT THIS LOCATION.
- PROVIDE ELECTRONIC 7-DAY PROGRAMMABLE THERMOSTAT FOR RTU-1 IN OFFICE. THERMOSTAT SHALL BE PROVIDED WITH A REMOTE SENSOR LOCATED AS INDICATED. COORDINATE THERMOSTAT LOCATION WITH OFFICE EQUIPMENT. SEE ARCHITECTURAL DRAWINGS.
- CONTRACTOR SHALL INSTALL OWNER FURNISHED ACCUREX EXHAUST HOODS AS SCHEDULED ON M-400 SERIES SHEETS.
- MECHANICAL CONTRACTOR SHALL PROVIDE 3" COMBUSTION AIR AND FLUE PIPES UP THRU ROOF TO CONCENTRIC TERMINATION PER MANUFACTURER REQUIREMENTS AND LOCAL CODE REQUIREMENTS. REUSE EXISTING ROOF PENETRATIONS WHERE PREVIOUS VENTS WERE LOCATED. ENSURE A MINIMUM OF 10'-0" AWAY FROM ANY OUTSIDE AIR INTAKE PER CODE.
- 14" ALUMINUM EXHAUST DUCT TO EF-1 ON ROOF. ROUTE 14" DOWN TO 16" HOOD EXHAUST CONNECTION. PROVIDE TRANSITION DUCTWORK AS REQUIRED. SEAMS AND JOINTS SHALL BE WELDED AND LIQUID TIGHT. DUCT BRACING AND SUPPORT SHALL COMPLY WITH OHIO MECHANICAL CODE 2017. COORDINATE ROOF PENETRATION WITH STRUCTURAL DRAWINGS.
- 10" ALUMINUM EXHAUST DUCT TO EF-2 ON ROOF. ROUTE 10" DOWN TO 12" HOOD EXHAUST CONNECTION. PROVIDE TRANSITION DUCTWORK AS REQUIRED. SEAMS AND JOINTS SHALL BE WELDED AND LIQUID TIGHT. DUCT BRACING AND SUPPORT SHALL COMPLY WITH OHIO MECHANICAL CODE 2017. COORDINATE ROOF PENETRATION WITH STRUCTURAL DRAWINGS.
- 12" ALUMINUM EXHAUST DUCT TO EF-3 ON ROOF. ROUTE 12" DOWN TO 12" HOOD EXHAUST CONNECTION. PROVIDE TRANSITION DUCTWORK AS REQUIRED. SEAMS AND JOINTS SHALL BE WELDED AND LIQUID TIGHT. DUCT BRACING AND SUPPORT SHALL COMPLY WITH OHIO MECHANICAL CODE 2017. COORDINATE ROOF PENETRATION WITH STRUCTURAL DRAWINGS.
- 10"X10" EXHAUST DUCT UP TO EF-4 ON ROOF. PROVIDE TRANSITION DUCTWORK AS REQUIRED.
- CONTRACTOR SHALL ROUTE 22"X20" SUPPLY AND 28"X20" RETURN DUCT UP THROUGH ROOF AND CONNECT TO RTU-1. PROVIDE DUCT TRANSITIONS AS REQUIRED FOR FULL SIZE DUCT CONNECTIONS AT THE UNIT.
- ROUTE DUCT BELOW EXISTING 3" FIRE SPRINKLER MAIN. PROTECT EXISTING FIRE SPRINKLER MAIN DURING ALL CONSTRUCTION, TYPICAL.
- ROUTE DUCT BELOW EXISTING STEEL BEAMS. REFER TO STRUCTURAL DRAWINGS FOR EXISTING BEAM LOCATIONS AND INFORMATION. FIELD VERIFY AND COORDINATE EXACT ROUTING WITH ALL EXISTING CONDITIONS, TYPICAL.
- ROUTE DUCT THROUGH EXISTING STEEL JOISTS. REFER TO STRUCTURAL DRAWINGS FOR EXISTING JOIST LOCATIONS AND INFORMATION. FIELD VERIFY AND COORDINATE EXACT ROUTING WITH ALL EXISTING CONDITIONS, TYPICAL.
- ROUTE DUCT BELOW EXISTING STEEL JOISTS. REFER TO STRUCTURAL DRAWINGS FOR EXISTING JOIST LOCATIONS AND INFORMATION. FIELD VERIFY AND COORDINATE EXACT ROUTING WITH ALL EXISTING CONDITIONS, TYPICAL.
- CONTRACTOR SHALL ROUTE 18"X24" SUPPLY DUCT UP THROUGH ROOF AND CONNECT TO MUA-1. PROVIDE DUCT TRANSITIONS AS REQUIRED FOR FULL SIZE DUCT CONNECTIONS AT THE UNIT.

REV.	DATE	DESCRIPTION

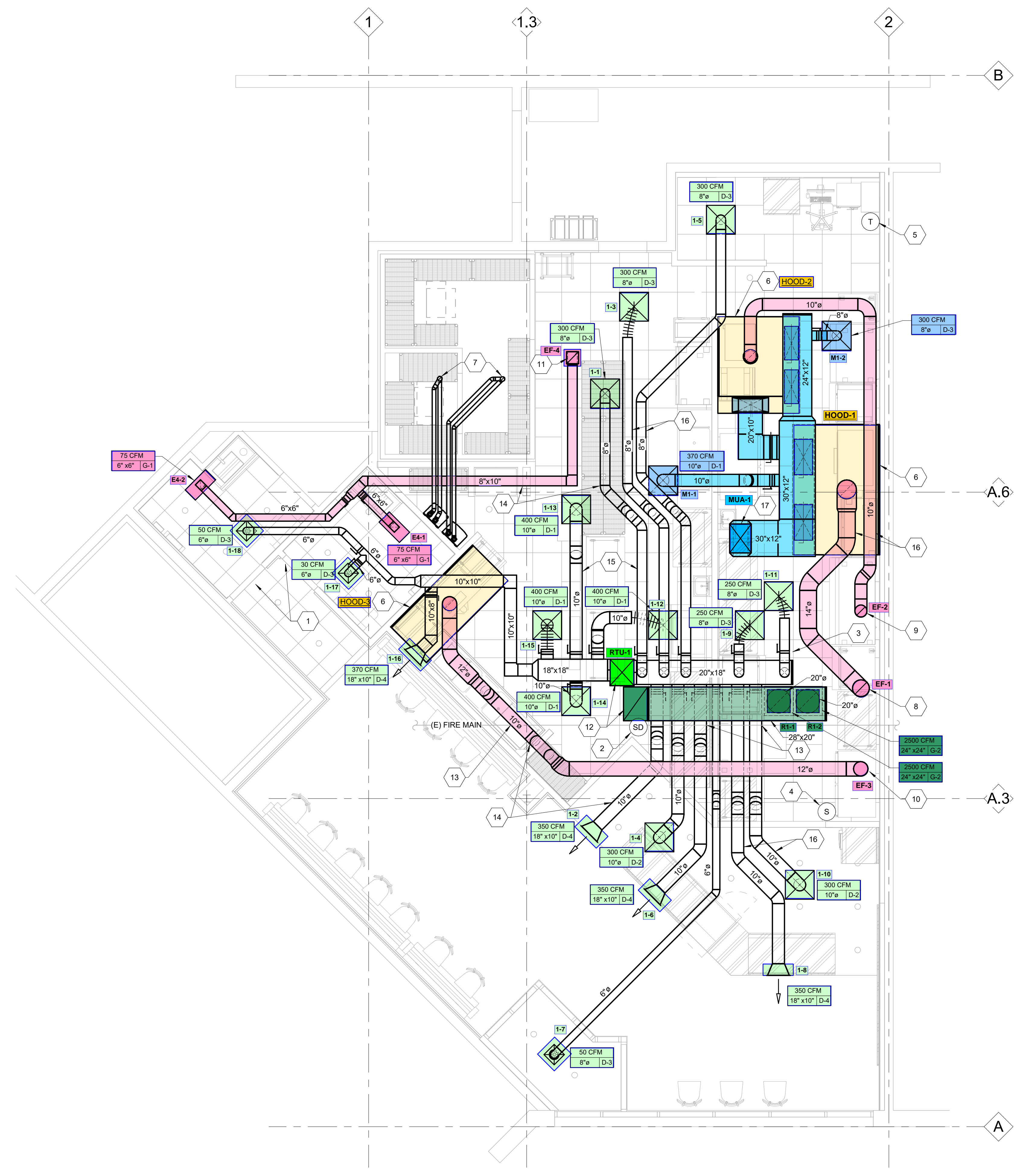
JASON'S DELI
 2727 MADISON RD, SUITE 2715
 CINCINNATI, OH 45209

MECHANICAL HVAC PLAN

DATE	05/01/23
PERMIT	05/01/23
BID	---
CONSTRUCTION	---
RECORD	---
PROJECT MANAGER	NRV
DESIGNER	DMJ

JOB NO.
 2023259.01

M-201



1 MECHANICAL FLOOR PLAN
 1/4" = 1'-0"



PLAN KEYNOTES

1. INSTALL EXHAUST FAN WITH CURB. SEE M-400 SHEETS FOR SCHEDULE INFORMATION. COORDINATE LOCATION OF UNIT WITH EXISTING CONDITIONS AND STRUCTURAL DRAWINGS. EXHAUST FAN AND CURB SHALL BE FURNISHED BY HOOD SUPPLIER.
2. INSTALL KITCHEN HOOD EXHAUST FAN AND PROVIDE CURB ADAPTER ON EXISTING ROOF CURB. SEE M-400 SHEETS FOR SCHEDULE INFORMATION. COORDINATE LOCATION OF UNIT WITH EXISTING CONDITIONS AND STRUCTURAL DRAWINGS. EXHAUST FAN SHALL BE FURNISHED BY HOOD SUPPLIER. CURB ADAPTER SHALL BE FURNISHED BY CONTRACTOR.
3. OUTSIDE AIR OPENING SHALL BE A MINIMUM OF 10'-0" AWAY FROM OTHER VENT AND EXHAUST OPENINGS. FIELD VERIFY EXISTING CONDITIONS AND OTHER TENANT EQUIPMENT BEFORE THE START OF ANY WORK.
4. PROVIDE ROFTOP UNIT WITH CURB IN LOCATION SHOWN. COORDINATE FINAL LOCATION OF UNIT WITH EXISTING CONDITIONS AND STRUCTURAL DRAWINGS.
5. PROVIDE MAKE UP AIR UNIT WITH CURB IN LOCATION SHOWN. COORDINATE FINAL LOCATION OF UNIT WITH EXISTING CONDITIONS AND STRUCTURAL DRAWINGS.
6. COOLER/FREEZER REMOTE CONDENSING UNIT. BASE SHALL BE FURNISHED BY GENERAL CONTRACTOR AND INSTALLED BY MECHANICAL CONTRACTOR.
7. REFRIGERANT PIPING DOWN THROUGH ROOF IN PATE PIPE CURB. INSTALL PER MANUFACTURER'S GUIDELINES.
8. 2" GAS LINE DOWN THRU ROOF. SEE GAS PIPING ROOF PENETRATION DETAIL AND SUPPORT DETAILS ON SHEET P-103.
9. PROVIDE DIRT LEG AND GAS COCK FOR ALL GAS CONNECTIONS. REFER TO GAS CONNECTION TO ROFTOP UNIT DETAIL ON P-103 FOR ADDITIONAL INFORMATION.
10. WATER HEATER CONCENTRIC FLUE THRU ROOF. SEE M-201 FOR CONTINUATION. SEE WATER HEATER CONCENTRIC FLUE DETAIL ON SHEET P-101 FOR MORE INFORMATION. LOCATE A MINIMUM OF 10'-0" AWAY FROM ANY OUTSIDE AIR INTAKES.
11. EXISTING 3" VENT THRU ROOF TO BE REUSED. FIELD VERIFY VENT IS A MINIMUM OF 10'-0" AWAY FROM OUTSIDE AIR OPENINGS.
12. PROVIDE INSULATED CAP OVER EXISTING ROOF CURB WHERE PREVIOUS HVAC EQUIPMENT/DUCT WAS REMOVED AND SEAL WEATHER TIGHT.
13. EXISTING CAPPED ROOF CURB TO REMAIN, SHOWN FOR REFERENCE ONLY.
14. EXISTING ROOF SCREEN TO REMAIN, SHOWN FOR REFERENCE ONLY. PROTECT DURING ALL CONSTRUCTION.
15. EXISTING ROOF DRAIN TO REMAIN, SHOWN FOR REFERENCE ONLY. PROTECT DURING ALL CONSTRUCTION.
16. EXISTING VENT THRU ROOF TO REMAIN, SHOWN FOR REFERENCE ONLY. PROTECT DURING ALL CONSTRUCTION.
17. CAP EXISTING VENT THRU ROOF NOT BEING REUSED. ENSURE EXISTING ROOF PENETRATION AND NEW CAP ARE SEALED WEATHER TIGHT.

REV.	DATE	DESCRIPTION

JASON'S DELI
 2727 MADISON RD, SUITE 2715
 CINCINNATI, OH 45209

MECHANICAL ROOF PLAN

	DATE
PERMIT	05/01/23
BID	05/01/23
CONSTRUCTION	-/-/-
RECORD	-/-/-

PROJECT MANAGER	DESIGNER
NRV	DMJ

JOB NO.
2023259.01

M-301

1 MECHANICAL ROOF PLAN
 1/4" = 1'-0"

