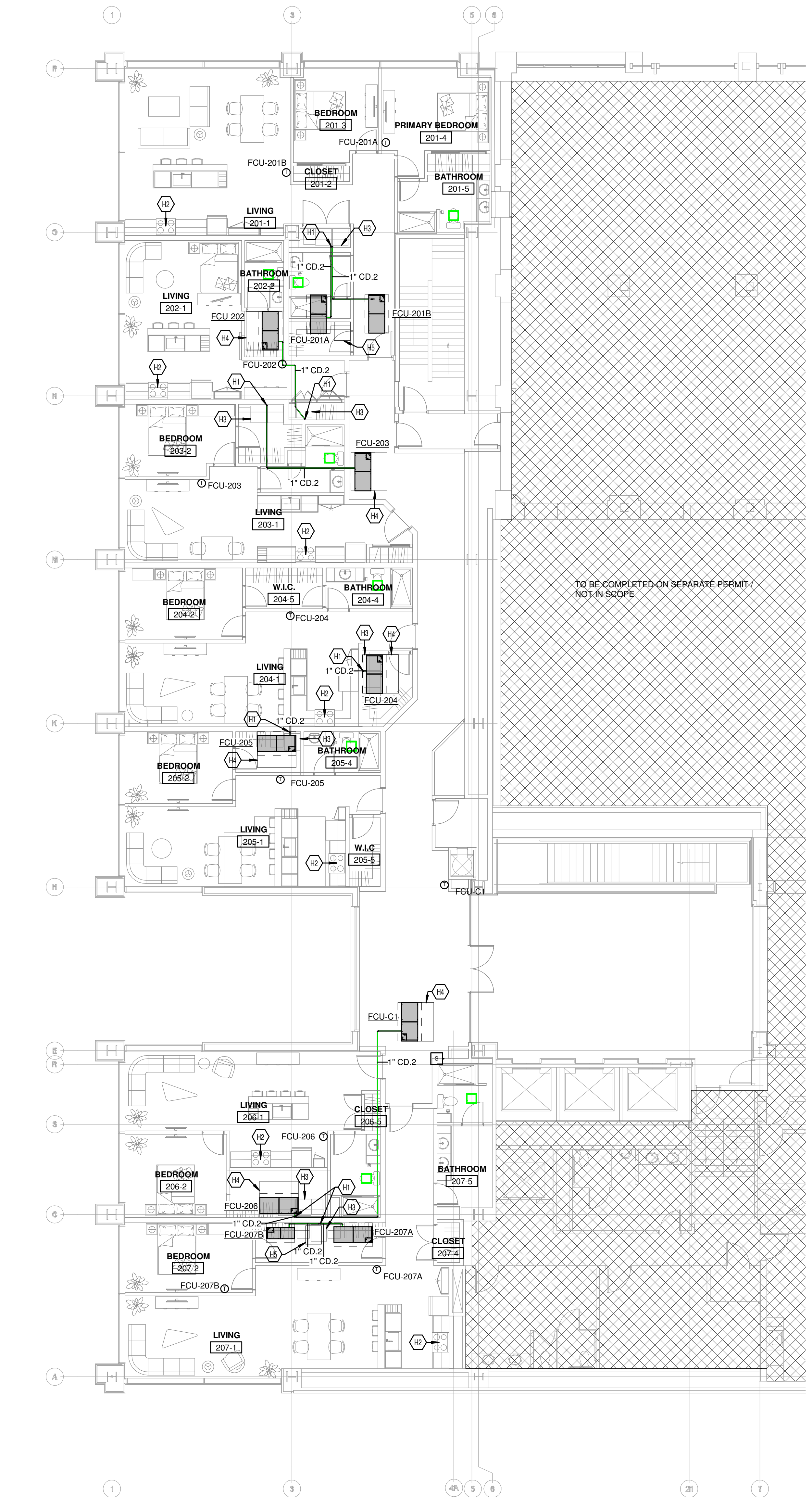
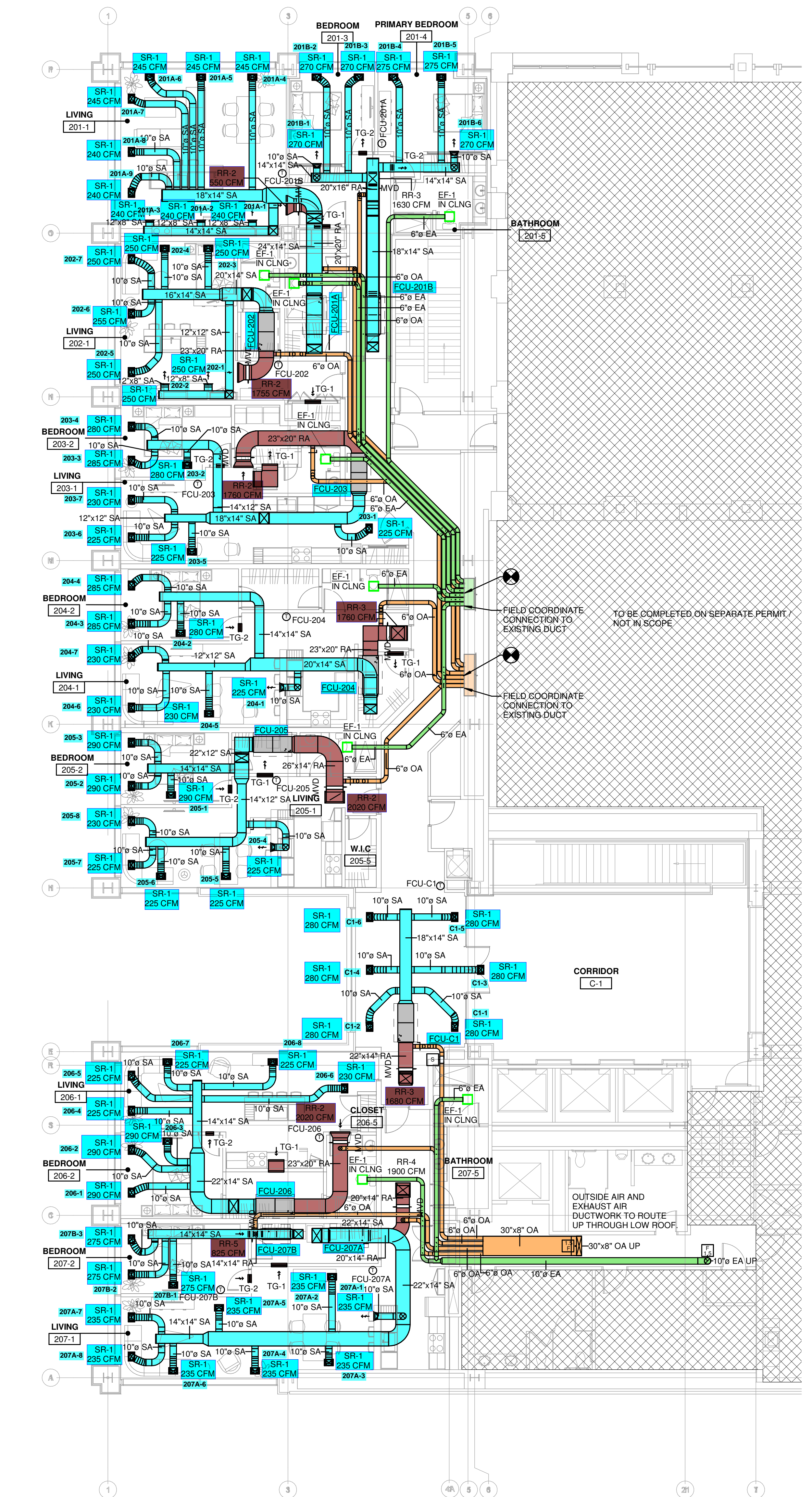


OWNERSHIP OF INSTRUMENTS OF SERVICE
 All data, notes and other documents and instruments prepared by the Consultant as instruments of service shall remain the property of the Consultant. The Consultant shall retain all common law, statutory and other reserved rights, including, without limitation, the copyright therein.

10/31/2023 5:56:56C:\Users\mthum\Documents\Revit\24166_04_23 - Mechanical-Formica 2nd Fl_Apt Fit_Out_mthum.rvt



2 MECHANICAL PIPING PLAN - LEVEL 2
 1/8" = 1'-0"

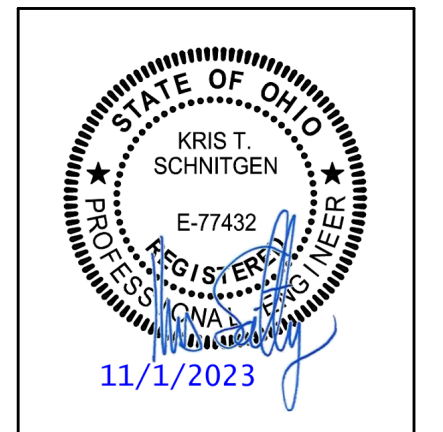


1 MECHANICAL PLAN - LEVEL 2
 1/8" = 1'-0"

KEYED NOTES	
H1	CONDENSATE PIPING TO BE INDIRECTLY CONNECTED TO WASHER BOX
H2	RECIRCULATING KITCHEN HOOD BY OTHERS
H3	DUCTLESS DRYER BY OTHERS
H4	PROVIDE ACCESS PANEL EQUAL TO THE SIZE OF THE UNIT
H5	PROVIDE ACCESS PANEL TO MAINTENANCE PLATFORM FOR SERVICING FAN COILS

MECHANICAL ELECTRICAL ENGINEERS
 WWW.KLHENGINEERS.COM
KLH ENGINEERS
 KOHRS LOHMEYER HELL ENGINEERS, INC.
 1538 ALEXANDRIA PIKE, SUITE 11
 FT. THOMAS, KENTUCKY 41075
 952-446-8558
 952-446-8558 FAX

Formica Building - Second Floor Apartments
 120 E 4th Street
 Cincinnati OH 45202



REVISIONS	

DWN: MAT CHK: RAL
 DATE: 10/31/2023
 PROJECT #: 24166-04
 MECHANICAL
 LEVEL 2 PLAN

M3-102
 1" REFERENCE
 KLH PROJECT #
 24166.04