

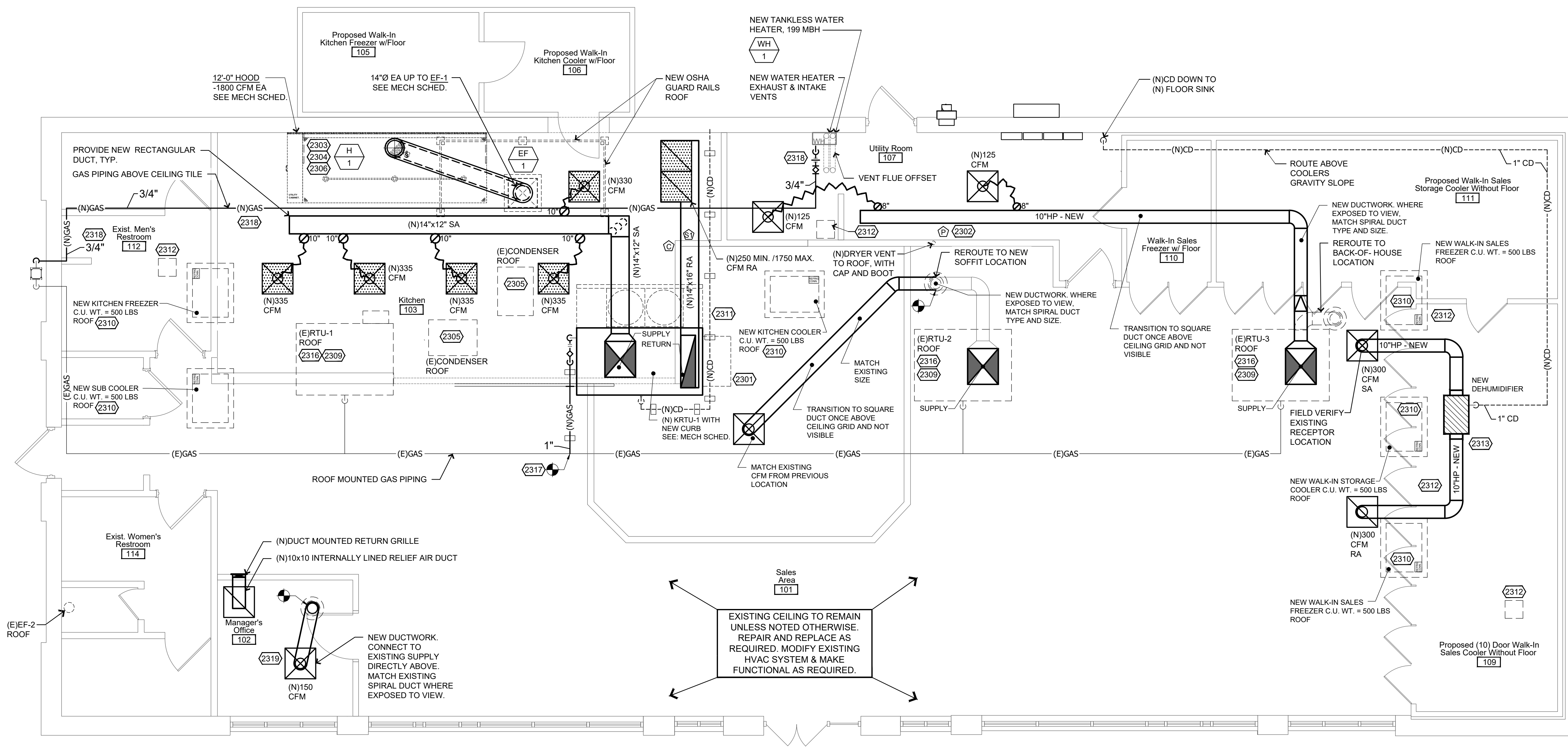
## General Construction Notes

- COORDINATE ALL SUPPLY AND RETURN AIR GRILLS W/ ELECTRICAL AND OTHER CEILING MOUNTED DEVICES. SEE REFLECTED CEILING PLAN
- ALL DIFFUSER RUNS TO BE INSULATED FLEX DUCT. SIZE AS NOTED. SEE NOTE 12 BELOW.
- ALL ELECTRICAL BY OTHERS
- HANG ALL DUCT WORK & EQUIPMENT PER IMC CODE.
- WALK-IN COOLER AND FREEZER WALK-IN TO BE ASSEMBLED AS PER MANUFACTURERS SPECS. (NOT INCLUDED IN THESE PLANS)
- CEILING DIFFUSERS TO BE LOCATED IN ONE TILE AREA. RE: REFLECTED CEILING PLAN A-111 FOR LOCATIONS.
- ALL DRAIN LINES TO BE 7/8" ACR COPPER
- ALL DUCT WORK TO MEET SMACNA STANDARDS AND NOT LIGHTER THAN 24 GA. METAL.
- REFERENCE SHEETS QR-602 FOR HVAC CONTROL WIRING.
- ALL DUCT WORK TO BE INSULATED ON EXTERIOR R-8 OR GREATER.
- NO FLEX OVER 6' IN LENGTH.
- HVAC TO COORDINATE & PROVIDE PENETRATIONS TO HOOD SYSTEM AS REQUIRED.
- ALL FRESH AIR INTAKES SHALL BE A MINIMUM OF 10' AWAY OR 3' BELOW ANY EXHAUST OUTLET OR PLUMBING VENT
- THIRD PARTY SHALL BALANCE AIR FLOW AS SHOWN ON CONSTRUCTION DOCUMENTS. FIELD REPORTS SHALL INDICATE DEFICIENCIES PREVENTING PROPER TESTING, ADJUSTING AND BALANCING OF SYSTEM AND EQUIPMENT TO ACHIEVE SPECIFIED PERFORMANCE. FURNISH REPORTS TO CASEY'S HVAC/R SUPERVISOR AND ENGINEERING IN APPROVED FORMAT.

## Keyed Construction Notes

### DIVISION 23 - HEATING, VENTILATING AND AIR CONDITIONING

- 2301 OUTDOOR AIR INTAKE LOCATED A MIN. OF 10FT FROM EXHAUSTS.
- 2302 DRYER EXHAUST TO BE AT 1'-7 1/2" TO CENTER FROM FLOOR PAD. DRYER EXHAUST TO BE 4"Ø VENT UP THROUGH ROOF WITH VENT CAP. INSTALLED BY GENERAL CONTRACTOR.
- 2303 HOOD LIGHTING TO BE CONNECTED INTO APPROPRIATE WALL SWITCH.
- 2304 EXHAUST HOOD: 12 FT HOOD SECTIONS S/S 16 GAUGE. HOOD PROVIDED UNDER NATIONAL ACCOUNT.
- 2305 EXISTING CONDENSING UNITS ON ROOF TO REMAIN.
- 2306 NEW HOOD EXHAUST FAN THRU ROOF - SEE MECH SCHED. AND CAPTIVE-AIRE DRAWINGS.
- 2307 ADD NEW SA/RA DIFFUSERS & ROUTE OR ADD DUCT AS REQ'D.
- 2308 NOT USED.
- 2309 EXIST. T-STAT CONTROL -Vfy LOC. MODIFY AS REQ.
- 2310 REFRIGERATION CONDENSING STAND PROVIDED BY CASEY'S AND INSTALLED BY GENERAL CONTRACTOR. SHIM & LEVEL ON NEW PAD OR SHIM & LEVEL ON 2X12 RIBBON WITH MIN. (2) JOIST UNDER.
- 2311 PROVIDE CONDENSATE LINE. TERMINATE SIMILAR TO EXISTING.
- 2312 COORDINATE REFRIGERATION LINES PENETRATION INTO PIPE CURB FROM ROOF DOWN INTO BUILDING.
- 2313 APRILARE 1870W DEHUMIDIFIER - PROVIDE SUPPORT/PLATFORM ABOVE CLR/FRZ BOX IF REQUIRED. ROUTE 1" CONDENSATE LINE TO NEW OR EXISTING DRAIN LOCATION. FIELD VERIFY RECEPTOR LOCATIONS.
- 2314 NOT USED.
- 2315 NOT USED.
- 2316 EXISTING RTU TO REMAIN IN SERVICE. SERVICE UNIT BACK TO GOOD OPERATING CONDITION. EXISTING THERMOSTAT CONTROL TO REMAIN IN SERVICE. REPLACE IF DAMAGED.
- 2317 PROVIDE NEW ROOF TOP GAS PIPING TO BE ROUTED TO KRTU-1 AND CONNECT NEW GAS LINE TO ADJACENT EXISTING MAIN OF LARGER SIZE. FIELD VERIFY EXISTING GAS LINE SIZE & LOCATION FOR CONNECTION OF NEW. INCLUDE GAS VALVE, REGULATOR (IF REQUIRED), UNION AND DRIP LEG. MOUNT GAS PIPING ON PREFABRICATED PIPE SUPPORTS
- 2318 PROVIDE NEW GAS PIPING TO WATER HEATER. ROUTE PIPING ABOVE LAY-IN CEILING.
- 2319 TIE NEW DUCT TO EXISTING DUCTWORK FROM THE CLOSEST RTU HAVING SUFFICIENT CAPACITY.



**1 Mechanical Plan**  
1/4" = 1' - 0"

HVAC PACKAGE UNIT SCHEDULE																					
Unit Name	Manufacturer and Model Number	Equipment Notes	Unit CFM	OSA CFM	ESP	Blower			EER/IEER	Cooling Capacity		Heating Capacity				Electrical			Operating Weight LBS (with curbs)		
						HP	BHP	RPM		Nominal Tons	MBH	Input		Output		Volts	Phase	FLA/RLA Amps		MCA Amps	MOP Amps
												Gas or Electric	MBH	KW	MBH						
RTU-1 RTU-2 KRTU-1 RTU-3	Trane Accurex-XRV-25-12.5-G (DOAS) Trane	Existing Existing NEW Existing	2000	1750	0.5	1.5	0.697	1271	14-Nov	12.5	155.3	GAS	150 150 200 80	121.5 121.5 160 64	208	3	51.1A	60A	2539		

AIR BALANCE SCHEDULE									
Unit Name	Unit Description	Manufacturer and Model Number	Supply Air	Return Air	Outside Air	Exhaust Air		Air Balance	
			CFM	CFM	CFM	CFM Morning	CFM Typical	CFM Morning	CFM Typical
RTU-1	Existing Sales Area HVAC Unit	Trane							
RTU-2	Existing Sales Area HVAC Unit	Trane							
KRTU-1	New DOAS Unit	Accurex-XRV-25-10I-G	2000	250	1750				
RTU-3	Existing Sales Area HVAC Unit	Trane							
EF-1	New Kitchen Exhaust Fan	Accurex-XRUD-140-VG					1800		
EF-2	Existing Restroom Exhaust Fan	Existing					160		
Totals			2000	250	1750	0	1960	1750	-210

EXHAUST HOOD OPERATION SUMMARY							
Equipment Name	Equipment Description	Cooking Equipment Status					
		Off		Warm-up and Cool-down Mode		Normal Operation	
		CFM	Percent	CFM	Percent	CFM	Percent
Exhaust Hood 1	12 foot Hood	0	0	360	20	1440 to 1800	80 to 100

The above values are approximate and meant to show the range of operation for the kitchen exhaust system. Refer to the Demand Control Ventilation System I, O, & M Manual for specific set-up and values - DOAS & Hood controls are interconnected to maintain balance.

## Kitchen Exhaust Hood Notes

MANUFACTURER: CAPTIVEAIRE 12' EXHAUST HOOD.

## Symbols Legend

- 2x2' DIFFUSER LOCATION TYP.
- 2x2' RETURN AIR DIFFUSER TYP.
- RESTROOM EXHAUST FAN / 10" HARD PIPE
- 2x2' DROP-IN PERFORATED SUPPLY DIFFUSER LOCATION TYP.
- DAMPER (ALL SUPPLY AND RETURN LINES TO HAVE DAMPERS)
- TURNING VANES
- HARD PIPE DUCT
- FLEX DUCT
- EXISTING DUCT
- HVAC THERMOSTAT 72" A.F.F.
- DRYER EXHAUST
- RESTROOM EXHAUST
- HVAC COMBO STAT - 60" A.F.F.
- HVAC HUMIDISTAT 72" A.F.F.
- SENSOR -60" A.F.F.
- \*ALL HEIGHTS LISTED ARE FROM BOTTOM OF UNITS U.N.O.
- HOOD
- DOAS - 60" A.F.F.
- (N) NEW
- (E) EXISTING
- \*ALL HEIGHTS LISTED ARE FROM BOTTOM OF UNITS U.N.O.

MPW ENGINEERING, LLC  
110 W. 7TH STREET • SUITE 600 • TULSA, OK 74119  
(918) 582-4088 • (918) 582-4087 FAX

---

STIPULATION FOR REUSE: THIS DRAWING WAS PREPARED FOR USE ON A SPECIFIC SITE AT A CONTINGENT FEE AND IT IS NOT SUITABLE FOR USE ON A DIFFERENT PROJECT SITE OR AT A LATER DATE. USE OF THIS DRAWING FOR REFERENCE OR AS AN EXAMPLE ON ANOTHER PROJECT REQUIRES THE SERVICES OF A PROFESSIONAL ARCHITECT AND ENGINEER. REPRODUCTION OF THIS DRAWING FOR REUSE ON ANOTHER PROJECT IS NOT AUTHORIZED AND IS CONTRARY TO THE LAW. © SCOTT WEBB GROUP, P.C.

CASEY'S CONSTRUCTION DIVISION  
One Convenience Blvd., P.O. Box 3001, Ankeny, Ia. 50021 515-965-6100

PROJECT: #4081 - Oklahoma City, OK.  
4000 North Pennsylvania Ave.  
(ACQUISITION - Circle K)

PUBLISHED: 10.20.21  
REVISED ON: \_\_\_\_\_  
DRAWING INFORMATION: MECHANICAL PLAN

---

DRAWING INFORMATION: CONSTRUCTION DIVISION  
DESIGNED BY: BHF/CAB  
CHECKED BY: DAD  
PROJECT NUMBER: 2100470

M-101

HOOD INFORMATION

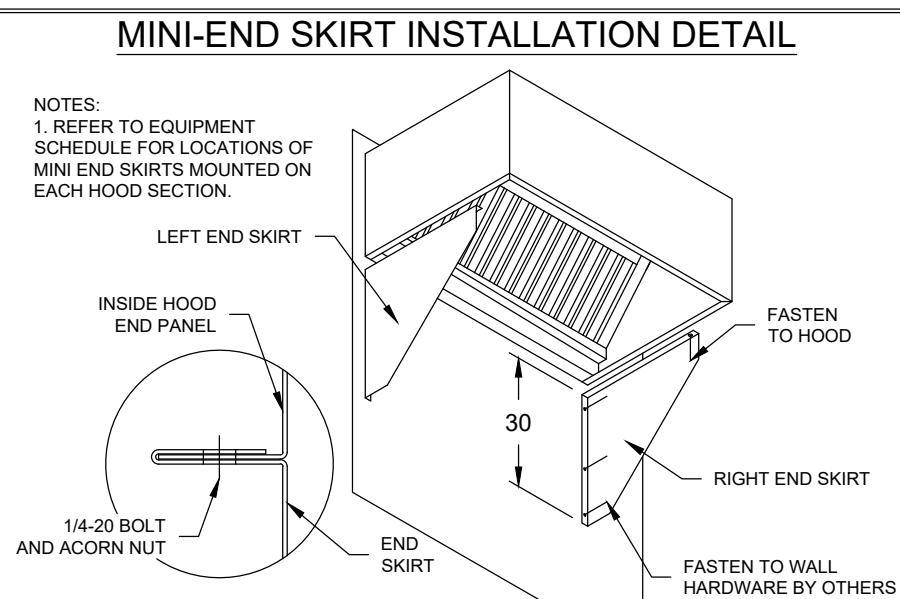
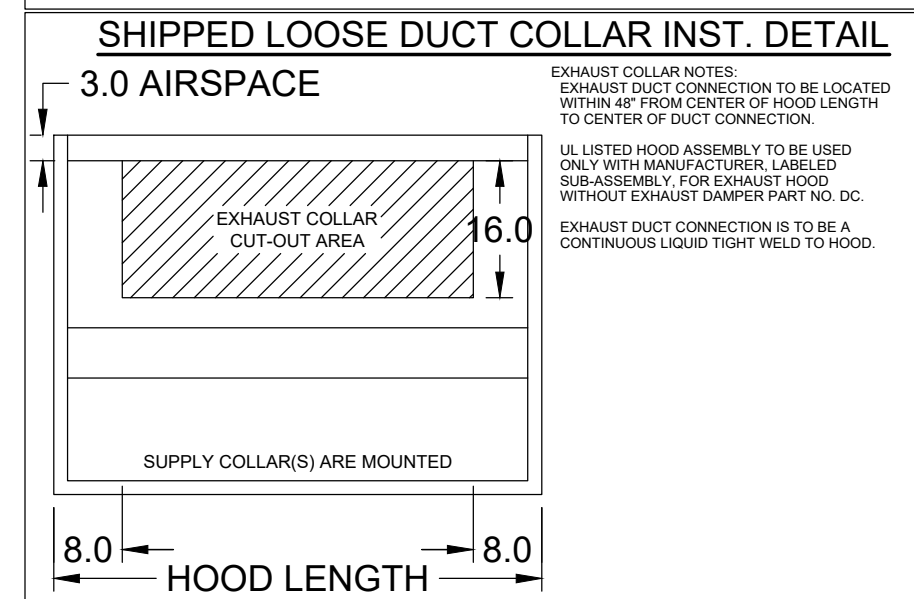
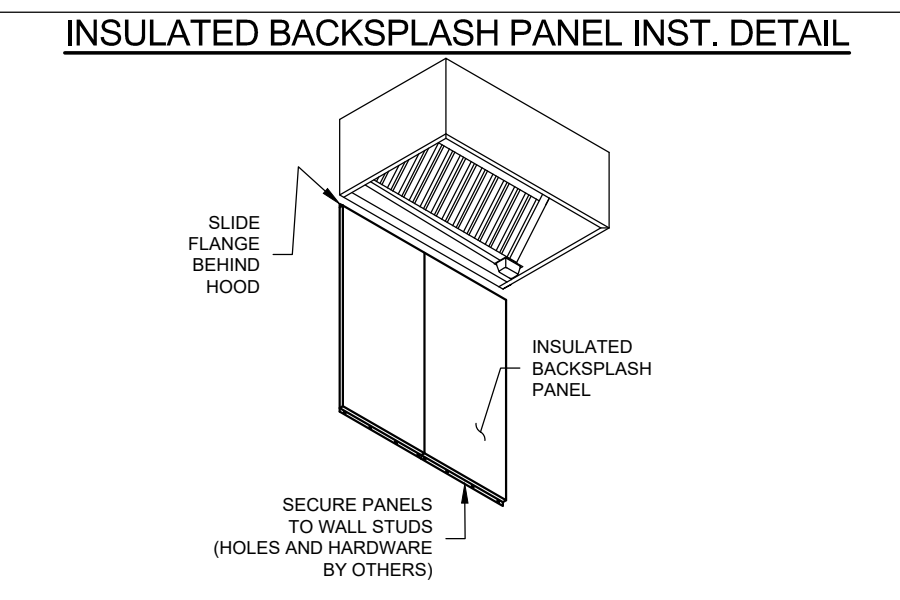
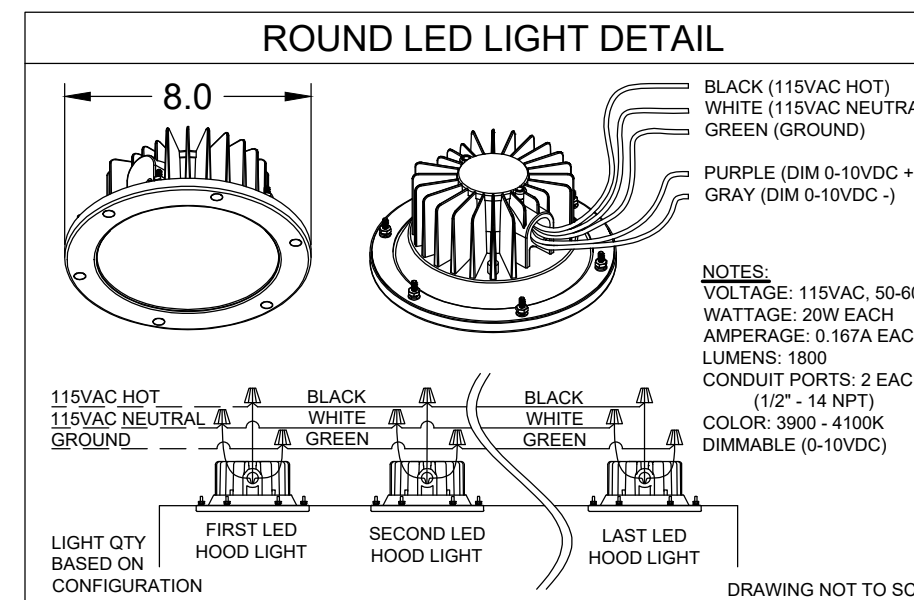
HOOD NO.	MARK	MODEL	HOOD DIMENSIONS (IN.)			HOOD CONSTR.	COOKING LOAD / DUTY RATING	TOTAL CFM	EXHAUST COLLAR(S)				SUPPLY		TOTAL WEIGHT LBS.	SECTION LOCATION	
			LENGTH	WIDTH	HEIGHT				WIDTH	LENGTH	DIA.	CFM	S.P.	MUA CFM			AC CFM
1	H-1	XBEW-144-S	144	54	24	430 SS WHERE EXPOSED	MEDIUM	1800			14	1800	0.398			361.228	SINGLE

HOOD INFORMATION

HOOD NO.	MARK	LIGHTING DETAILS			GREASE FILTRATION DETAILS			UTILITY CABINET(S)					
		FIXTURE TYPE BULB / LAMP INFO	QTY	FOOT CANDLES	TYPE / MODEL MATERIAL	QTY	SIZE (IN.) L H	LOCATION	FIRE SYSTEM TYPE	SIZE	MODEL	CONTROLS INTERFACE	
1	H-1	ROUND LED	3	69.77	BAFFLE STAINLESS STEEL	4	16	20	LEFT			XKC	TOUCHSCREEN

HOOD OPTIONS

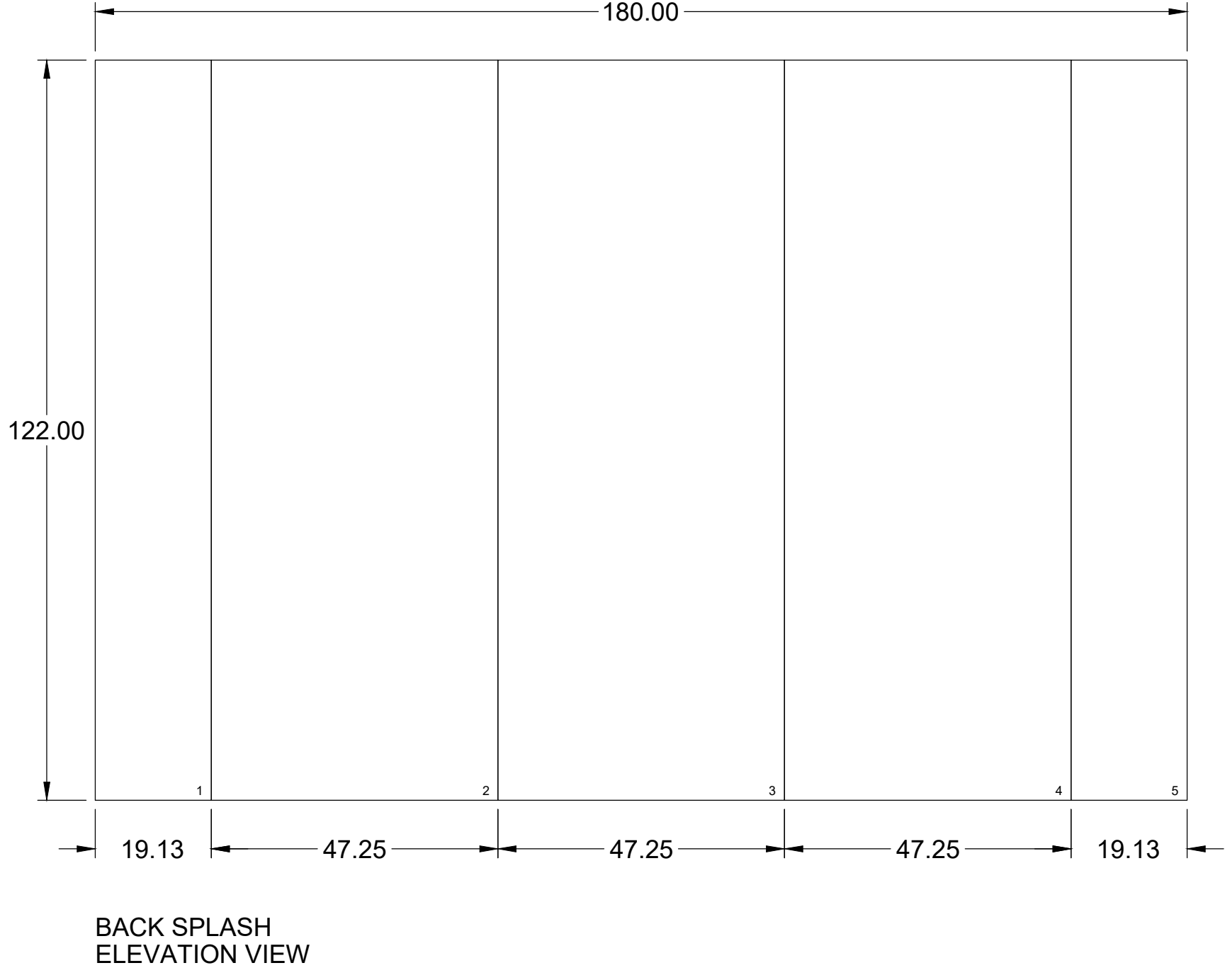
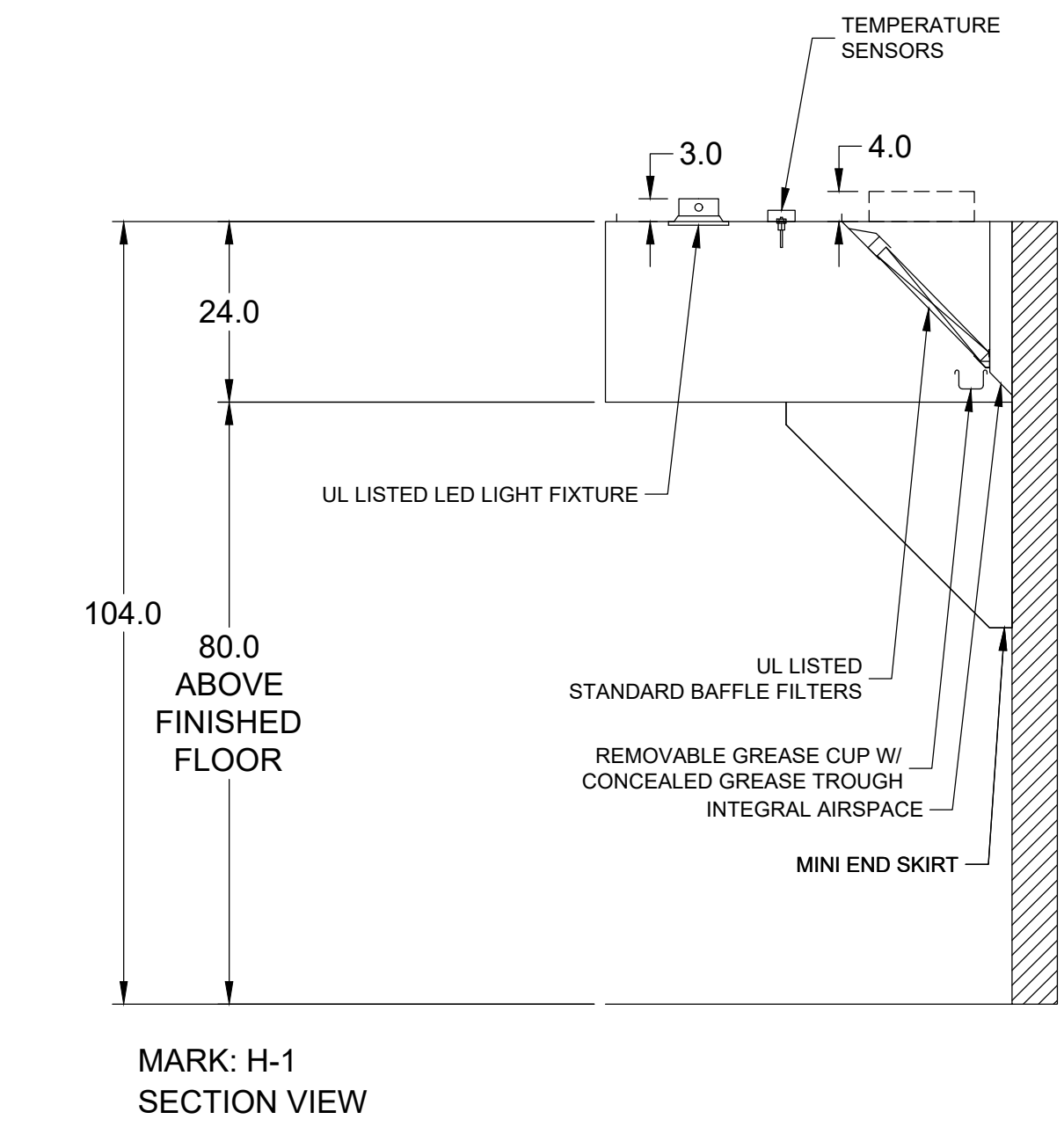
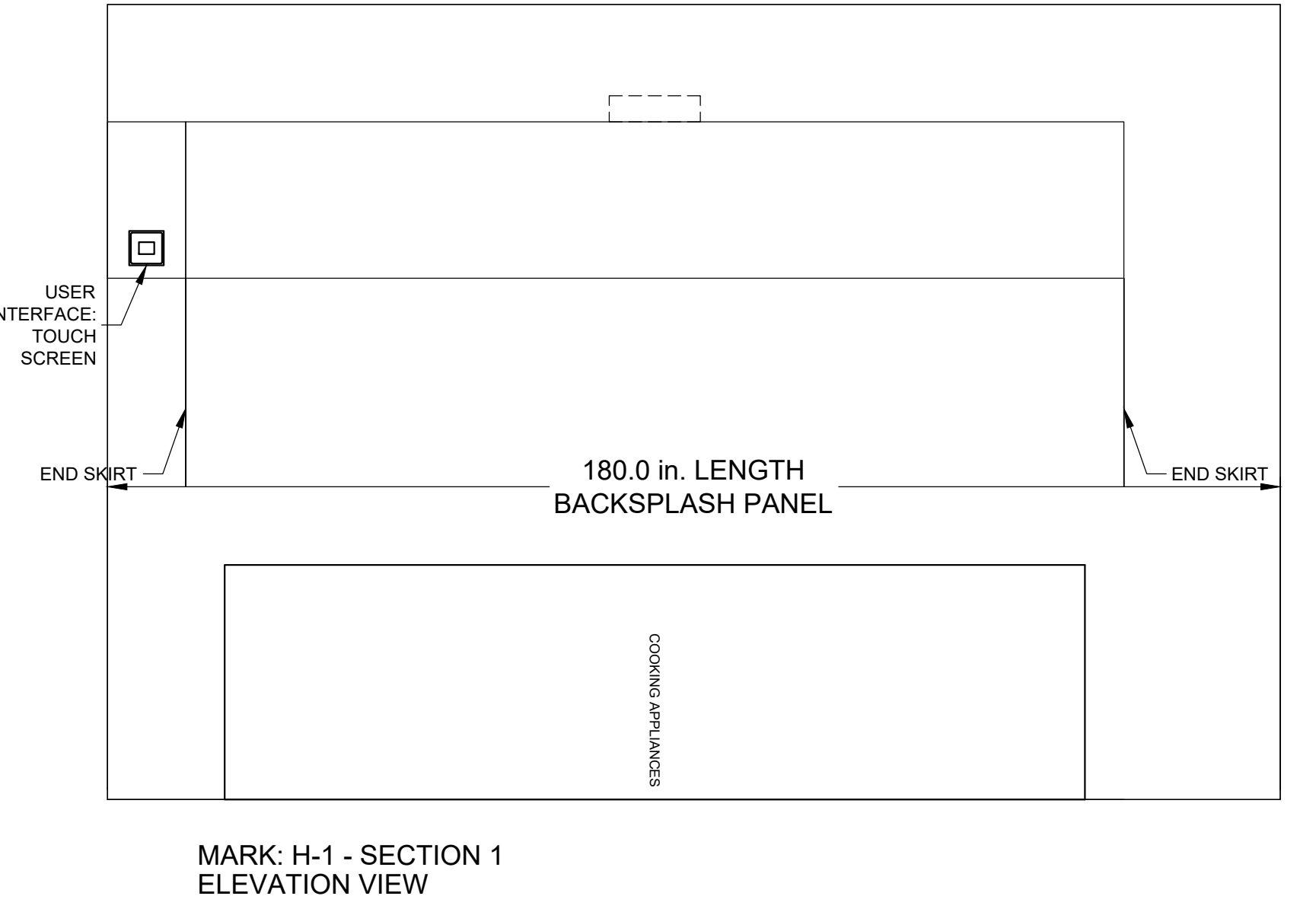
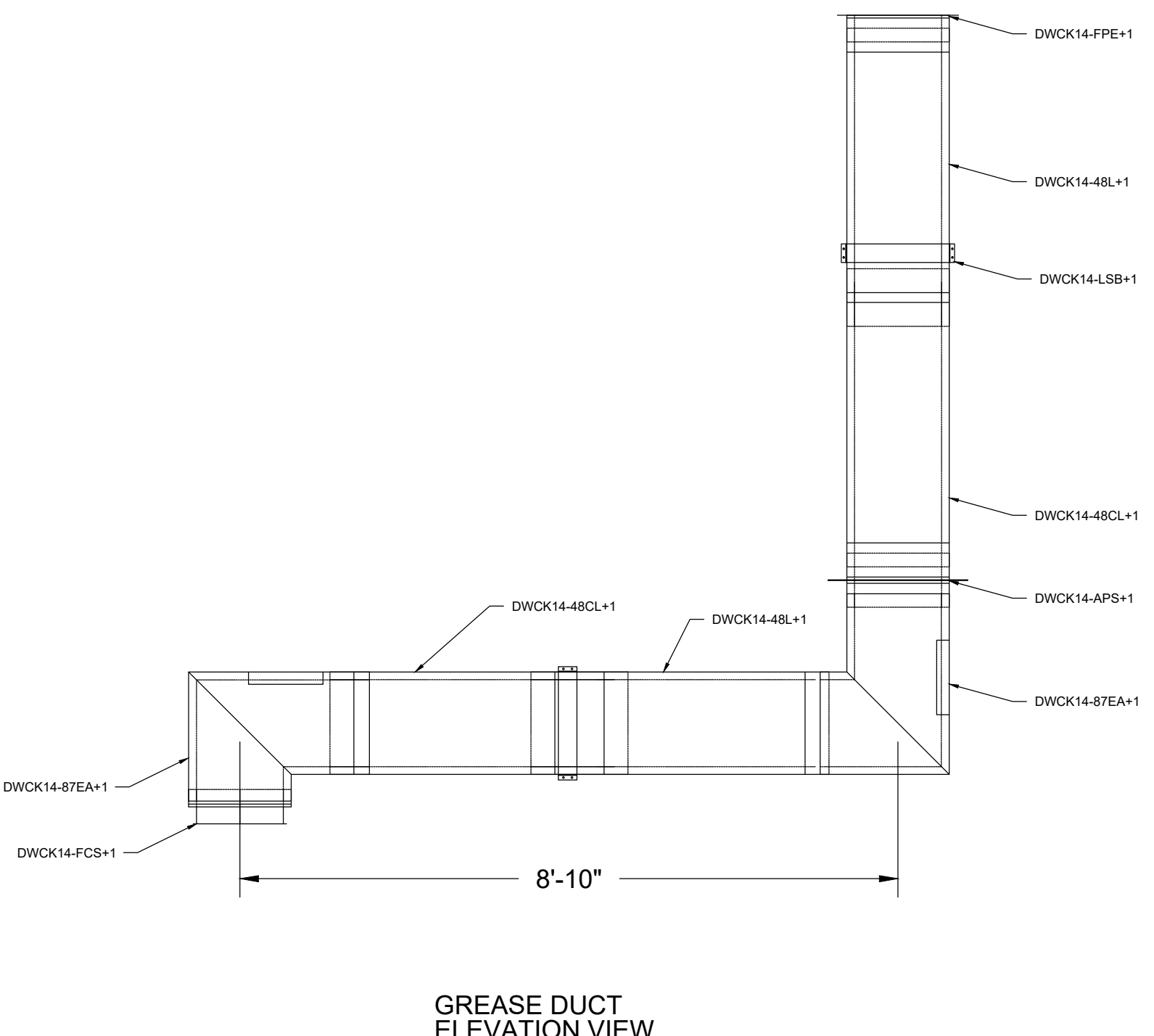
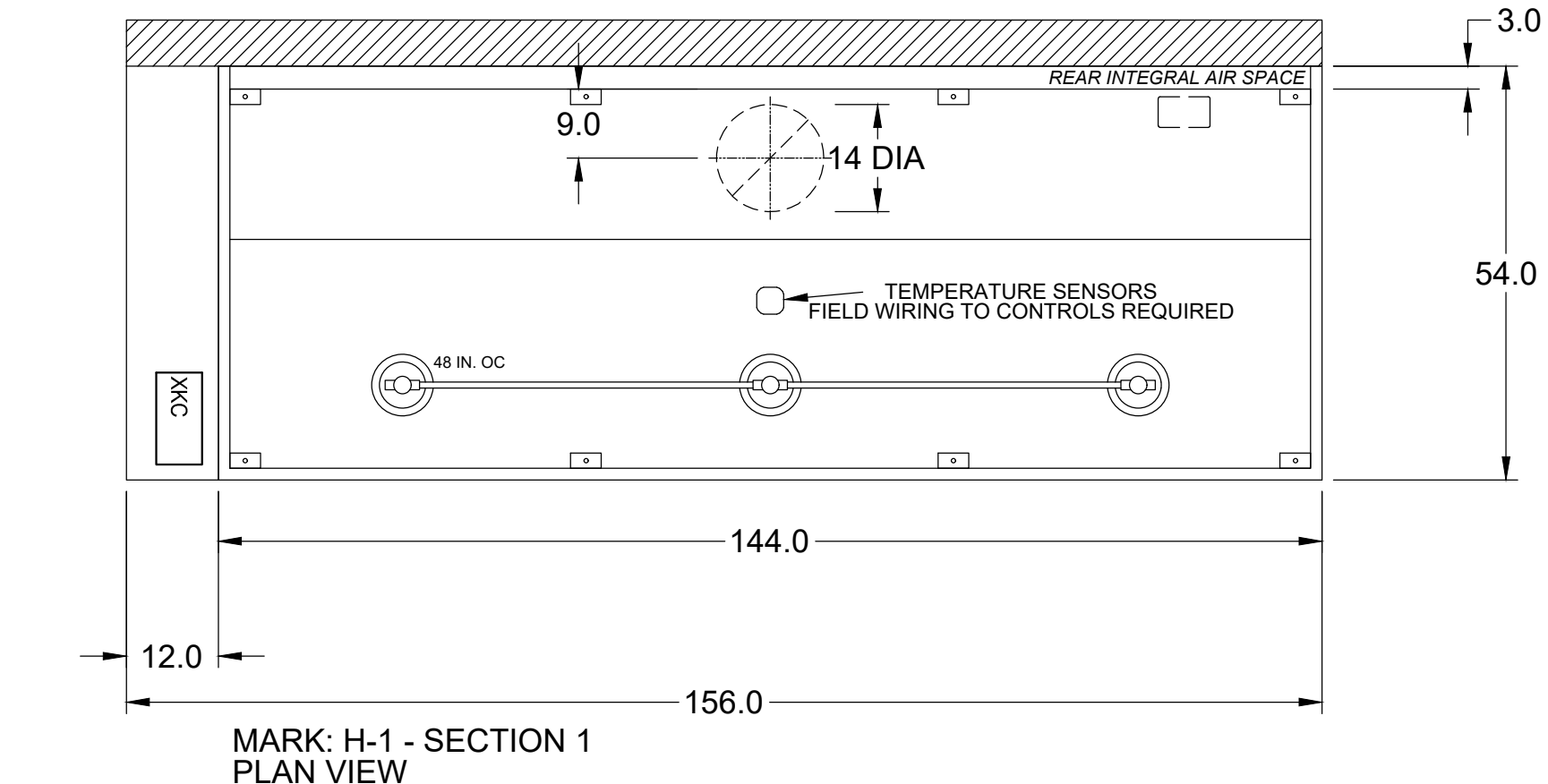
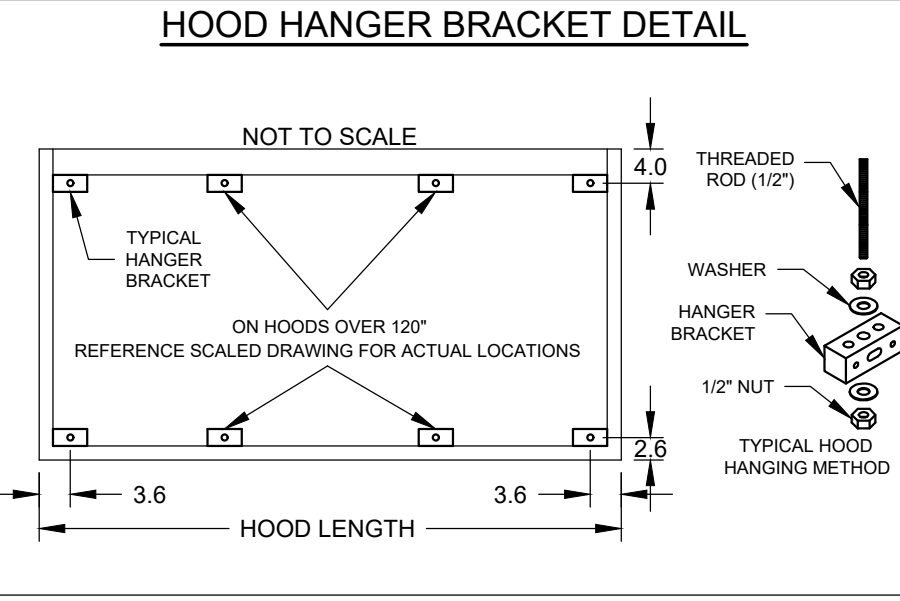
UL 710 LISTED W/ OUT EXHAUST FIRE DAMPER - UL #R25625  
 BACK INTEGRAL AIR SPACE - 3 IN WIDE  
 SHIPPED LOOSE EXHAUST COLLAR(S)  
 LEFT MINI END SKIRT - 30 IN HIGH 30.00 IN TOP WIDTH 4.0 IN BOTTOM WIDTH  
 RIGHT MINI END SKIRT - 30 IN HIGH 30.00 IN TOP WIDTH 4.0 IN BOTTOM WIDTH  
 BACKSPLASH INSULATED 122.00 IN HIGH 180.00 IN LONG 1 IN THICK  
 PERFORMANCE ENHANCING LIP (PEL) TECHNOLOGY  
 STANDING SEAM CONSTRUCTION FOR SUPERIOR STRENGTH



**HOOD HANGING HEIGHT FOR FIRE SYSTEMS**  
 VERIFICATION OF HOOD HANGING HEIGHT ABOVE FINISHED FLOOR (A.F.F.) IS REQUIRED FOR CORRECT PLACEMENT OF FIRE SYSTEM NOZZLES.

RECOMMENDED HANGING HEIGHT = 80" FROM FINISHED FLOOR TO LOWER FRONT EDGE OF HOOD.

OTHER HANGING HEIGHT = \_\_\_\_\_" FROM FINISHED FLOOR TO LOWER EDGE OF HOOD.



**GENERAL NOTES:**  
 1. WHEN INSTALLING FOLLOW ALL APPLIANCE MANUFACTURER AND JEREMIAS INC. INSTALLATION INSTRUCTIONS, AS WELL AS ANY LOCAL OR NATIONAL CODES.  
 2. INSTALLER IS TO FIELD VERIFY ALL DIMENSIONS AND PARTS BEFORE RELEASING THIS DRAWING FOR PRODUCTION.  
 3. ALL DRAIN LINES AND SUPPORTS BACK TO THE BUILDING ARE SUPPLIED BY THE INSTALLING CONTRACTOR.  
 4. JEREMIAS INC. DISCLAIMS ANY RESPONSIBILITY FOR ANY BUILDING INTERFERENCE NOT REFERENCED ON THIS DRAWING.

**WARRANTY STATEMENT:**  
 VENT/CHIMNEY/STACK HAS BEEN SIZED BY OTHERS. TO QUALIFY FOR OUR 25 YEAR EXTENDED WARRANTY, PROVIDE COMBUSTION INFORMATION TO JEREMIAS TO CONFIRM SIZING.

**APPLIANCE MANUFACTURER / MODEL NO.:**  
 OPERATING FLUE GAS TEMPERATURE:  
 UL INSTRUCTIONS USED FOR DESIGN:  
 Jeremias CK Installation Manual  
 UL LABEL USED FOR PRODUCT:  
 UL-1978 Grease Duct  
 J-600 Sealant FOR CONNECTIONS:

**MATERIAL:**  
 JEREMIAS INC. MODEL DWKL-VT  
 UL AND CUL LISTED  
 0.020" THICK TYPE 444 STAINLESS STEEL INNER  
 1.25" THICK FIBER INSULATION  
 0.025" THICK TYPE 304 STAINLESS STEEL OUTER JACKET  
 STAINLESS STEEL USED FOR ALL ACCESSORIES



SCAN FOR INSTALLATION VIDEO

**MPW ENGINEERING, LLC**  
 110 W. 7TH STREET • SUITE 600 • TULSA, OK 74119  
 (918) 582-4088 • (918) 582-4087 FAX

---

STIPULATION FOR REUSE: THIS DRAWING WAS PREPARED FOR USE ON A SPECIFIC SITE AT A CONTINGENT FEE AND IS NOT SUITABLE FOR USE ON A DIFFERENT PROJECT SITE OR AT A LATER TIME. USE OF THIS DRAWING FOR REFERENCE OR AS A BASIS FOR ANOTHER PROJECT REQUIRES THE SERVICES OF A PROFESSIONAL ENGINEER OR ARCHITECT. REPRODUCTION OF THIS DRAWING FOR REUSE ON ANOTHER PROJECT IS NOT AUTHORIZED AND IS CONTRARY TO THE LAW. © 2021 CASEY'S GROUP, P.C.

**CASEY'S CONSTRUCTION DIVISION**  
 One Convenience Blvd., P.O. Box 3001, Ankeny, Ia. 50021 515-965-6100

PROJECT: #4081 - Oklahoma City, OK.  
 4000 North Pennsylvania Ave.  
 (ACQUISITION - Circle K)

PUBLISHED: 10.20.21  
 REVISED ON:

DRAWING INFORMATION:  
 CONSTRUCTION DIVISION  
 EXHAUST HOOD DETAILS  
**M-401**

---

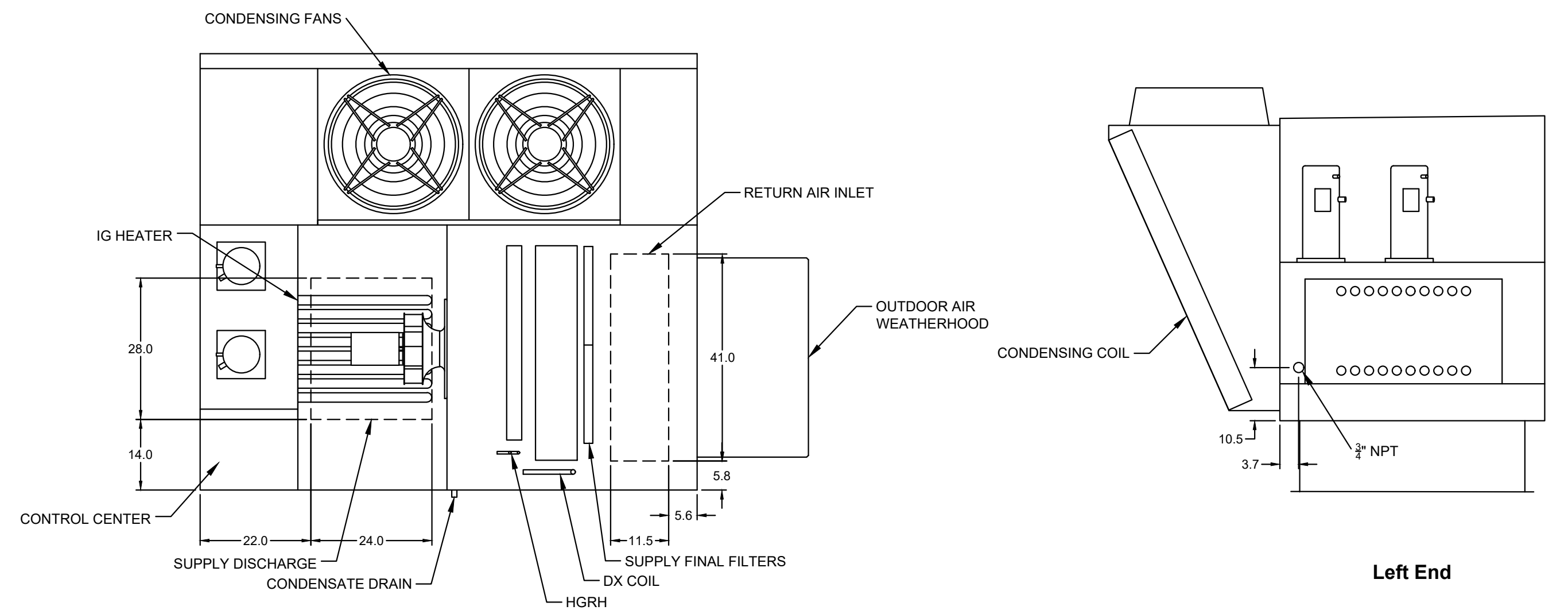
DESIGNED BY: BHF/CAB  
 CHECKED BY: DAD  
 PROJECT NUMBER: 2100470

DATE: 10.20.21

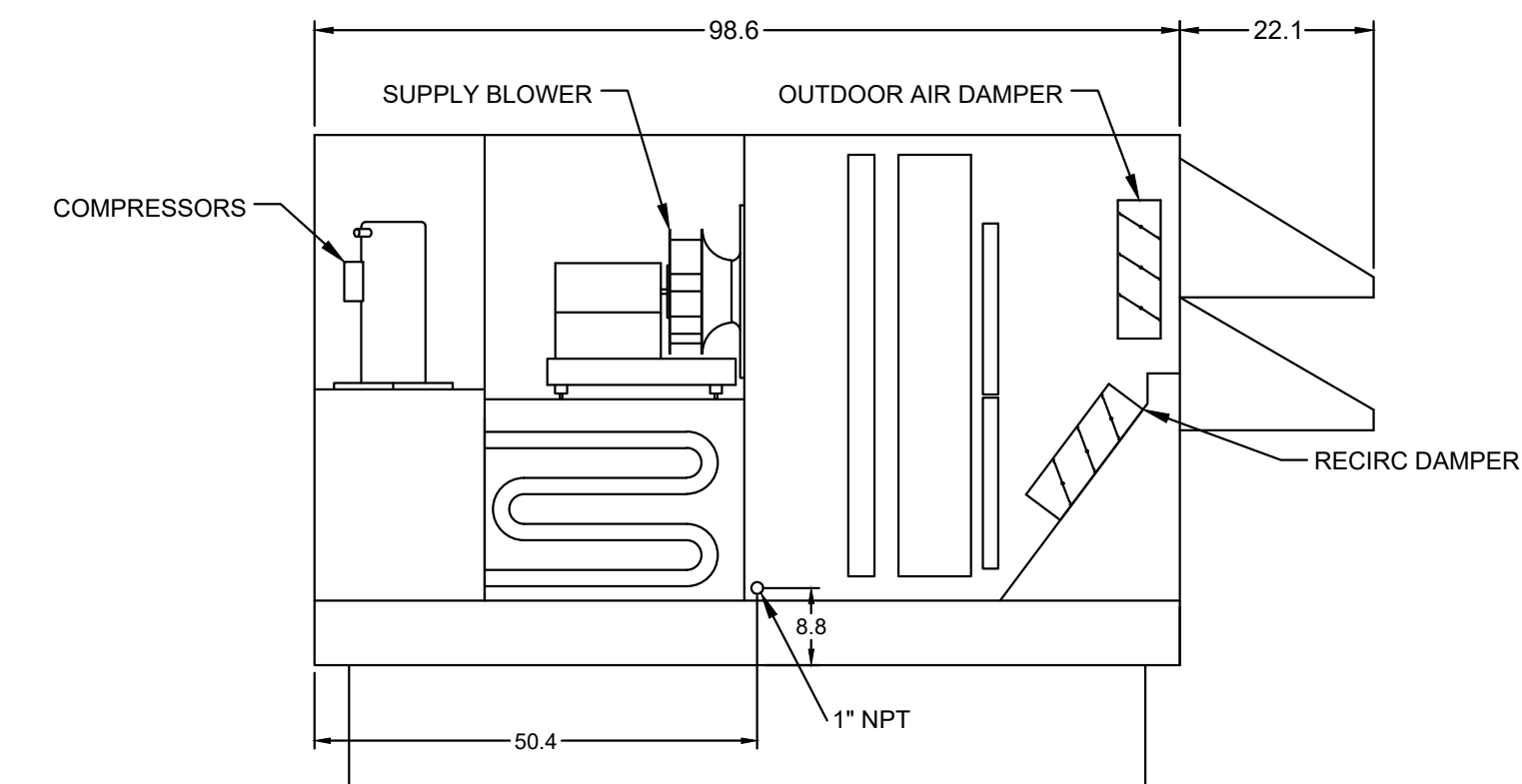
EQUIPMENT SCHEDULE

Packaged Ventilator														
Mark Name	Qty	Model	Mounting Location	Weight	Outdoor Air Volume	Recirc Air Volume	Economizer Outdoor Air Volume	Economizer Exhaust Air Volume						
KRTU-1	1	XRV-25-12.5I-G	Outdoor	2,539 lb	1,750 CFM	250 CFM	NA	NA						
Supply Fan				Electrical										
Supply Air Volume	Supply ESP	Supply TSP	FRPM	Supply BHP	Supply Motor	Voltage	Frequency	Phase	Unit MCA	Unit MOP				
2,000 CFM	0.5 in. wg	1.377 in. wg	1271	0.697	(1) 1-1/2 hp	208	60	3	51.1	60				
Cooling Section														
Coil Entering DB	Coil Entering WB	Coil Leaving DB	Coil Leaving WB	Nominal Tonnage	Total Capacity	Sensible Capacity	Coil Face Velocity	Coil Pressure Drop	Rows Deep	Fins per Inch	Compressor Type	Compressor Qty	AHRI 340/360 EER	AHRI 340/360 IEER
96.4 F	76.0 F	54.5 F	54.3 F	12.5	155.3 MBH	92.5 MBH	161 ft/min	0.142 in. wg	6	12	Inverter Scroll	2	11	14
Heating Section				Hot Gas Reheat										
Gas Type	Input	Output	EAT	LAT	Furnace Control	Temp Rise	Hot Gas Reheat Capacity	LAT						
Natural	200.0 MBH	160.0 MBH	19.0 F	93.0 F	16:1 Modulating	74.1 F	66.7 MBH	85.3 F						

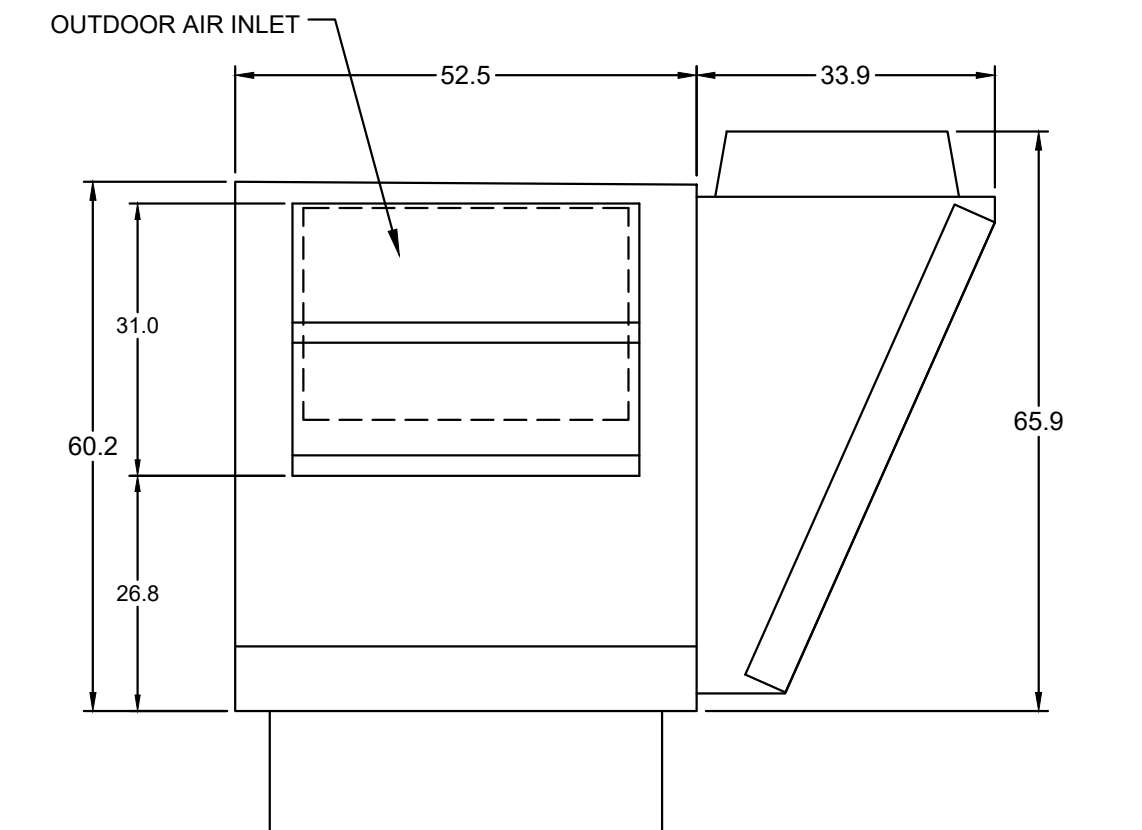
NOTES													
Painted exterior with 2,500 hr. salt spray rating. Double wall 2" R13 injected foam insulated cabinet. Single condenser fan shall not exceed a sound power level of 75 LWA. Compressors mounted on a shelf behind an insulated door for minimized radiated and transmitted sound. Direct-drive fans with factory mounted VFDs. Blowers shall be AMCA Certified for airflow. Controller must have simplified access via a laptop to view and change unit operation, set points, alarm history & 1 week of trending data. Inverter scroll lead compressor with a 5 year warranty. Modulating gas furnace with 16:1 Modulating turndown and a 25 year HX warranty.							<b>OPTIONS AND ACCESSORIES</b> Weatherhood: Downturned Hood Supply Filters - 2" Pleated MERV 8 and MERV 13, 8-20x20x2 Outdoor Air Dampers - Motorized Low Leakage Recirc Dampers - Motorized Low Leakage Painted Exterior - Concrete Gray (RAL 7023) Microprocessor Controls Supply Fan VFD Control - 0-10VDC By Others COBRA Danger Controls - Constant Position-Adj. Setpoint Space Thermostat - 1 Temp and RH Only Phase and Brown Out Protection 120v NEMA 3R Outlet (ships loose power by others) Unit Disconnect - Mounted By Factory Unit Warranty: 2 Yrs (1 Yr Ext) Extended Compressor Warranty: 5 Yrs						



Plan



Elevation



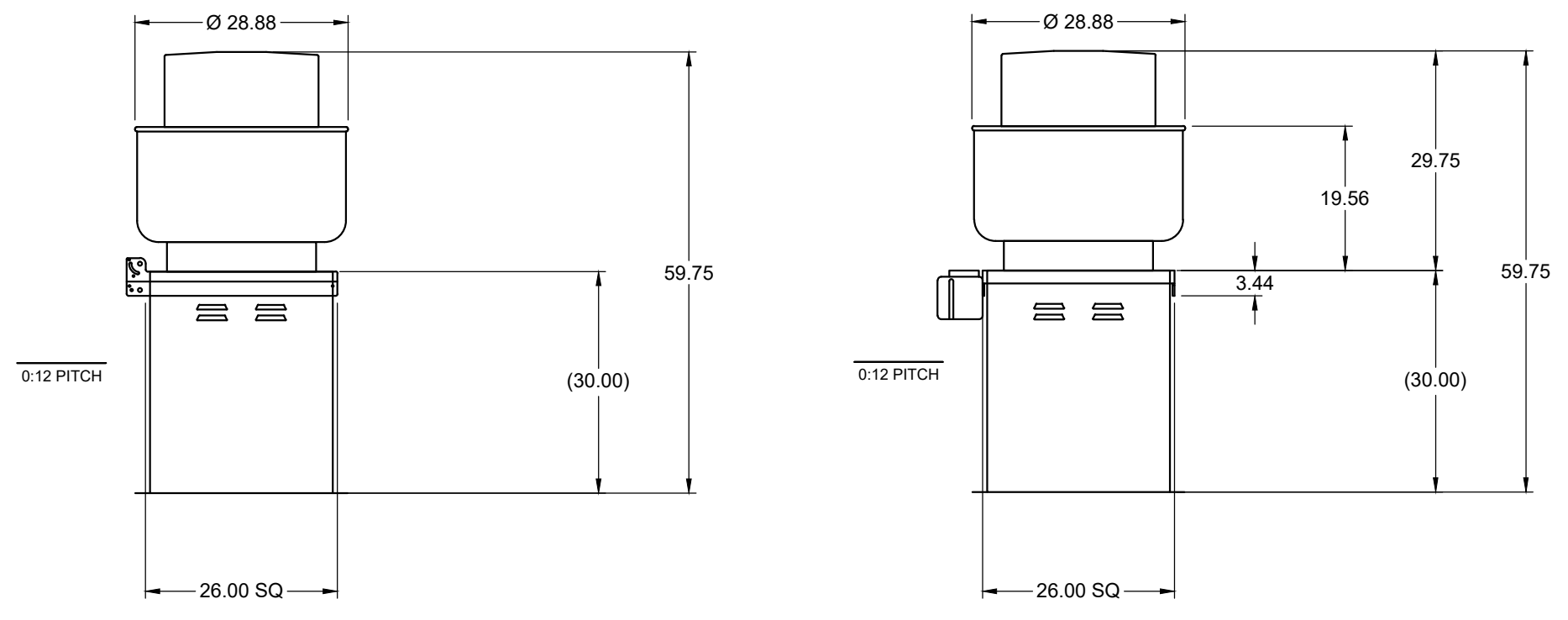
Right End

Direct Drive Upblast Centrifugal Roof Exhaust Fan

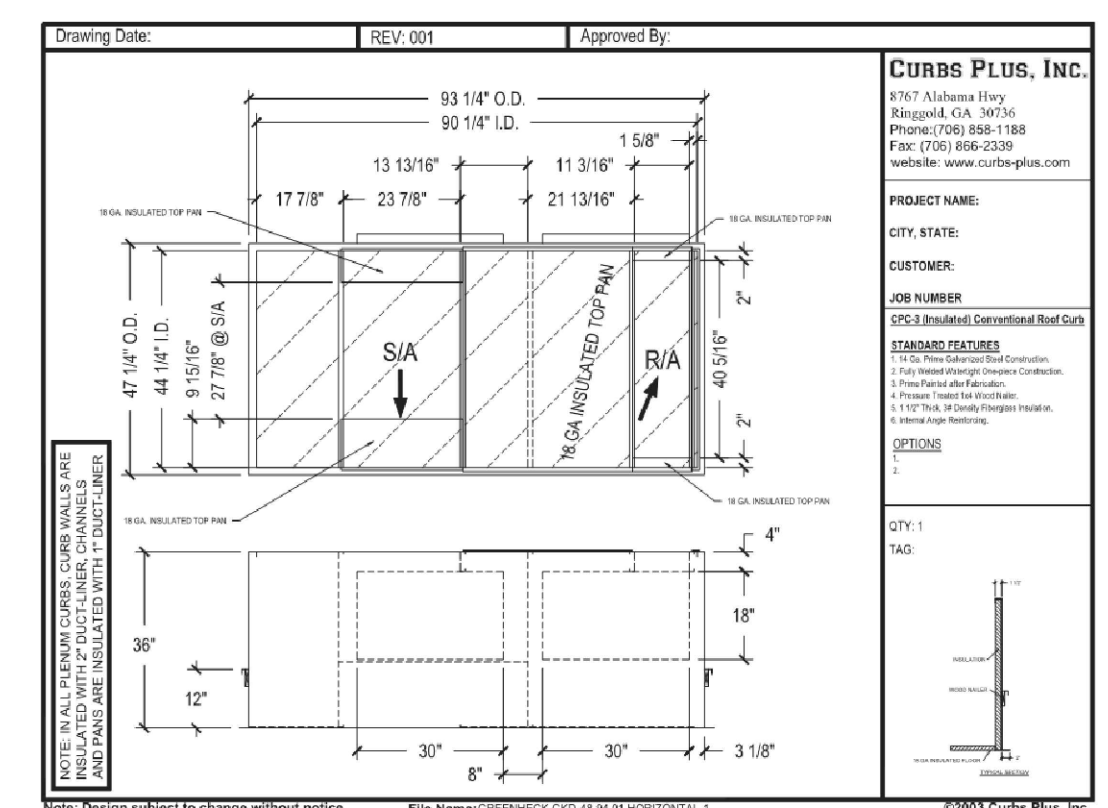
MARK INFORMATION			FAN INFORMATION						MOTOR INFORMATION					
QTY	MARK	MODEL	VOLUME (CFM)	TOTAL EXTERNAL SP (IN WG)	FAN RPM	OPERATING POWER (HP)	WEIGHT (LB.)	SIZE (HP)	V/C/P	ENCLOSURE	MOTOR RPM	WINDINGS	NEC FLA*	
1	EF-1	XRUD-140-VG	1,800	0.5	1,233	0.34	92	1	208/60/1	OP	1725	1	8.8	

\*NEC FLA - Based on table 430.250 or 430.248 of National Electrical Code 2020. Actual motor FLA may vary for sizing thermal overload, consult factory"

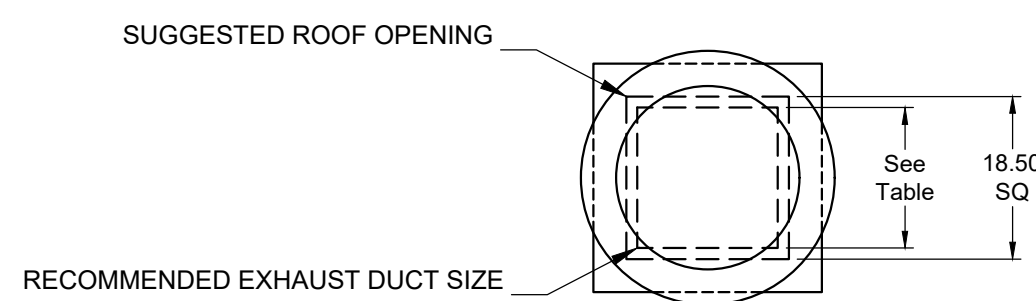
EF-1 : SELECTED OPTIONS AND ACCESSORIES	
One piece fully welded windband	
Tapered bushing wheel hub	
Breather tube outlet area min. 4.4 sq. in. (sizes 99-480), 2.0 sq. in. (sizes 60-95)	
Min. windband material thickness: 0.051" aluminum (060-240), 0.064" aluminum (240HP, 240XP), 0.080" aluminum (sizes 300-480)	
Larger Curb Cap Size - 26 Square	
UL/cUL 762 Listed - "Power Ventilators for Rest. Exh. Appliances"	
Switch, NEMA-3R, Toggle, Shipped with Unit	
Hinge, (PN 918398), (Shipped Loose)	
High Temp Curb Seal Rated for Continuous Duty at 1500 F (Factory Attached)	
Grease Trap (PN 475538)	
Clean-out Port - Factory Installed	



Curb Detail

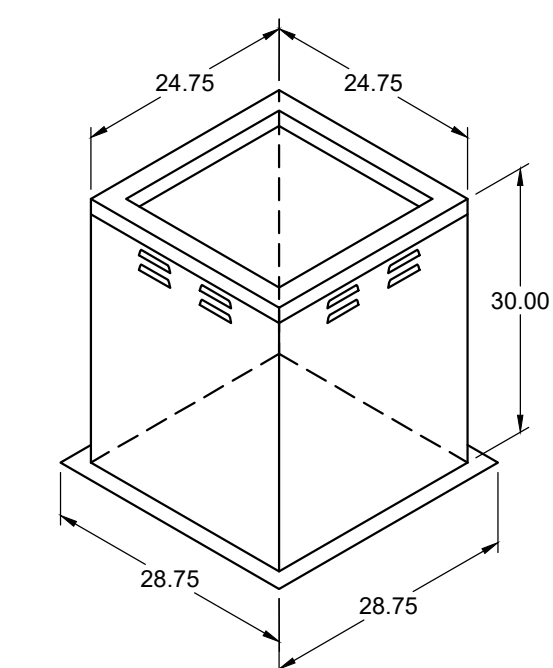


Curb Detail



DUCT TYPE	SIZE
STANDARD	16 SQ
FIRE-WRAPPED	8 SQ

DUCT DIMENSIONS ARE LARGEST POSSIBLE DUCT TO FIT THROUGH CURB. CONSULT SYSTEM DESIGN ENGINEER FOR RECOMMENDED DUCT SIZE.  
OVERALL HEIGHT MAY BE GREATER DEPENDING ON MOTOR, ADAPTER, AND/OR HINGE BASE.



**MPW ENGINEERING, LLC**  
110 W. 7TH STREET • SUITE 600 • TULSA, OK 74119  
(918) 582-4088 • (918) 582-4087 FAX

---

STIPULATION FOR REUSE: THIS DRAWING WAS PREPARED FOR USE ON A SPECIFIC SITE AT A PARTICULAR TIME. USE OF THIS DRAWING FOR REFERENCE OR AS A BASIS FOR ANOTHER PROJECT REQUIRES THE SERVICES OF A PROFESSIONAL ENGINEER OR ARCHITECT. REPRODUCTION OF THIS DRAWING FOR REUSE ON ANOTHER PROJECT IS NOT AUTHORIZED AND IS CONTRARY TO THE LAW. © 2020 DESIGN GROUP, P.C.

**CASEY'S CONSTRUCTION DIVISION**  
One Convenience Blvd., P.O. Box 3001, Ankeny, Ia. 50021 515-965-6100

PROJECT: #4081 - Oklahoma City, OK.  
4000 North Pennsylvania Ave.  
(ACQUISITION - Circle K)

PUBLISHED: 10.20.21  
REVISED ON: \_\_\_\_\_

DRAWING INFORMATION:  
**EXHAUST HOOD DETAILS**  
**M-402**

---

DESIGNED BY: BHF/CAB	CHECKED BY: DAD	PROJECT NUMBER: 2100470
----------------------	-----------------	-------------------------

CONTROL INFORMATION

MARK	ELECTRICAL CONTROL PACKAGE		USER INTERFACE		FANS CONTROLLED											
	MODEL	LOCATION	TYPE	LOCATION	FAN #	TYPE	FAN	FAN MARK	ZONE	CFM	MOTOR HP	MOTOR VOLT	CYCLE	MOTOR PHASE	MOTOR STARTER IN PANEL	VFD IN PANEL
DCV CONTROLS	XKC-DCV-SM-11-1-1-0	LEFT CABINET ON H-1	FULL COLOR TOUCHSCREEN	CABINET - LEFT CABINET ON H-1	1	EXHAUST	E1	EF-1	1	1800	1	208	60	1	NO	NO
					2	SUPPLY	S1	SUPPLY	1	2000	1.5	208	60	3	NO	NO

**CONTROL FEATURES**  
 HOOD LIGHT CONTROL  
 TEMP SENSORS (FACTORY INSTALLED) - QTY. 1  
 DRY FIRE CONTACTS - QTY. 2  
 LIGHTS OFF DURING FIRE  
 EXHAUST MAX DURING FIRE  
 SUPPLY OFF DURING FIRE  
 BMS INTEGRATION - MODBUS

**SPECIAL DESIGN REQUESTS**  
 SDR #K2100271 - APPLIANCE CONTACTORS, TERA CLOUD GATE WITH 2 YEAR SUBSCRIPTION



DOC NUMBER: #### REV: ####

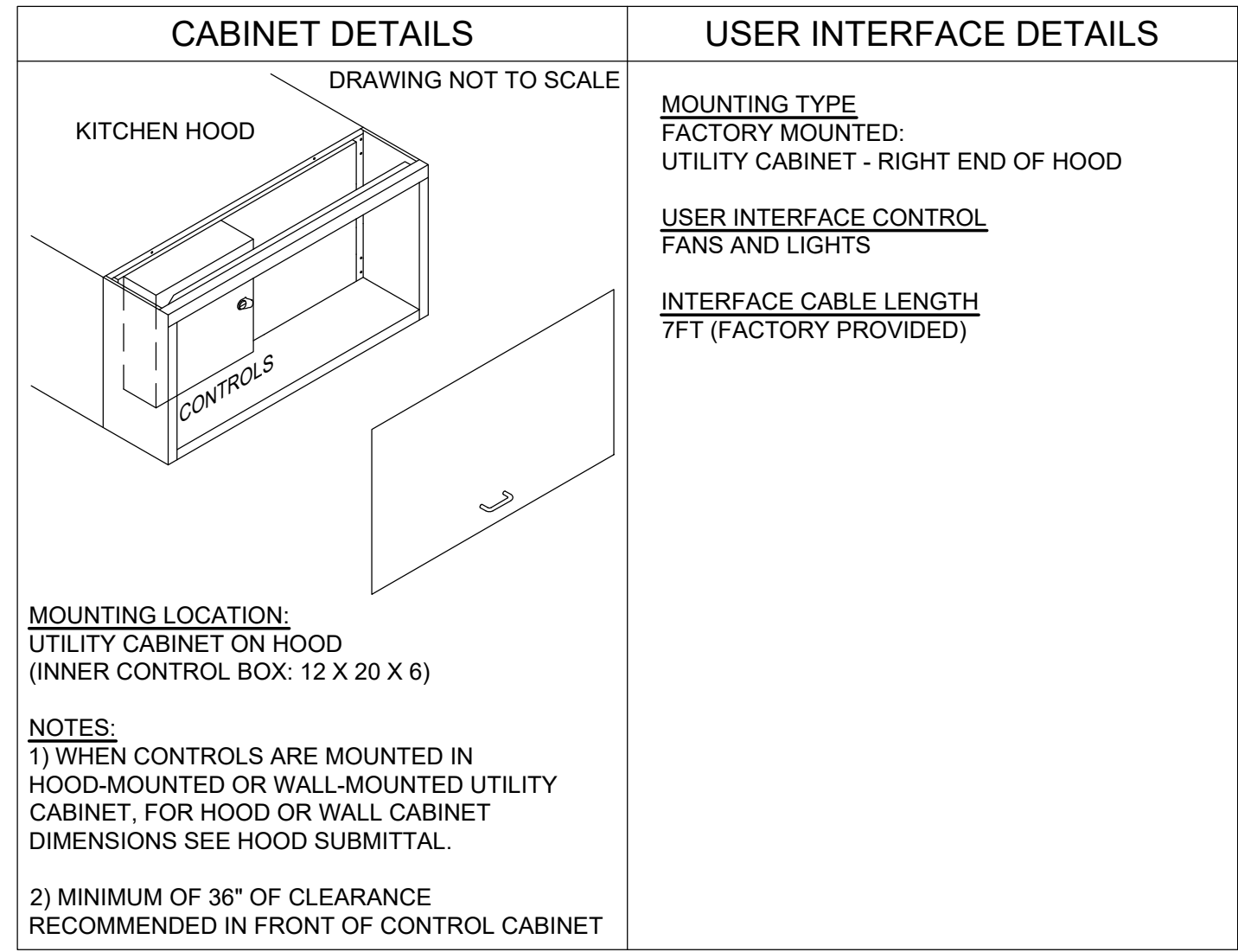
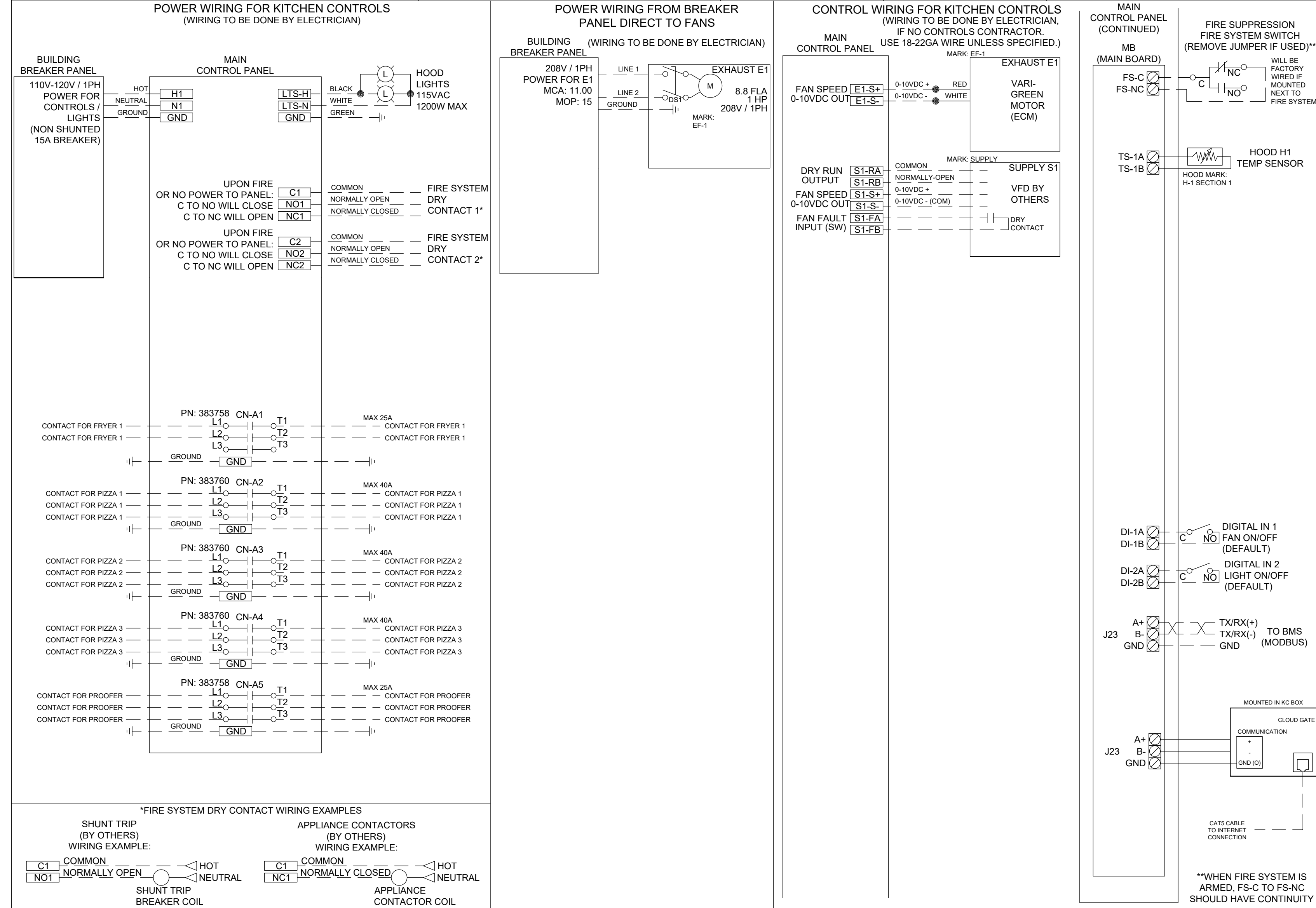
**CAUTION**  
 UNIT MUST BE GROUNDED IN ACCORDANCE WITH N.E.C. POWER MUST BE OFF WHILE SERVICING.

**ATTENTION**  
 L'APPAREIL DOIT ÊTRE MIS À LA TERRE CONFORMÉMENT AU CODE C.E. L'ALIMENTATION DOIT ÊTRE COUPÉE DURANT L'ENTRETIEN.

COMMERCIAL APPLIANCE OUTLET CENTER  
 ELECTRICAL RATINGS: 110-240V, 1PHASE, 50-60HZ, 15A  
 BASE FILE #E200616, M. FILE #E313951

NE PAS RETIRER CES DESSINS DE CET ÉQUIPEMENT. SAUF INDICATION CONTRAIRE, UTILISER DES CONDUCTEURS EN CUivre CLASSE 10/3. SERRER LES BORNES DE COMMANDE ET DE MISE À LA TERRE À 8 LBS-PO. SERRER LES COSSÉS/VIS D'ALIMENTATION AUX COUPLES INDÉQUÉS POUR LE COMPOSANT. SERRER LES BORNES À VIS DE LA CARTE DE COMMANDE À 3.5 LBS-PO. LA RÉSISTANCE DU CÂBLAGE DE COMMANDE LOCAL NE DOIT PAS DÉPASSER 0.75 OHM. POUR PLUS D'INFORMATION, CONSULTER LE MANUEL OU APPELER 1-800-371-6868.

WIRING DIAGRAM CODE: ####  
 JOB NAME: CASEYS-CIRCLEK OKLAHOMA CITY 4071  
 MODEL: XKC-DCV-SM-11-1-1-0  
 SERIAL NUMBER: WDSN#  
 MARK: DCV CONTROLS



WIRING DIAGRAM CODE: ####

JOB NAME: CASEYS-CIRCLEK OKLAHOMA CITY 4071

MODEL: XKC-DCV-SM-11-1-1-0

SERIAL NUMBER: WDSN#

MARK: DCV CONTROLS

DOC NUMBER: #### REV: ####

**DEFAULT SETTINGS / PARAMÈTRES PAR DÉFAUT**

**FACTORY SETTINGS**

TYPE VARI CONFIGURATION: STANDARD

ZONE # | ZONE | ROOM TEMP

1	Z1	PRESET
---	----	--------

**HOOD CONFIGURATION**

HOOD #	HOOD	HOOD MARK	ZONE	EXHAUST	SUPPLY	MB-TEMP SENSORS	HCB
1	H1	H-1 SECTION 1	Z1	E1	S1	TS1	NO

**ZONE SETTINGS**  
 SEE ZONE CONFIGURATION IN TABLE ON LEFT

**HOOD SETTINGS**  
 SEE HOOD CONFIGURATION IN TABLE ON LEFT

**EXHAUST FAN SETTINGS**  
 SEE FAN CONFIGURATION IN TABLE ON LEFT

**SUPPLY FAN SETTINGS**  
 SEE FAN CONFIGURATION IN TABLE ON LEFT

**SENSOR SETTINGS**  
 SEE HOOD CONFIGURATION IN TABLE ON LEFT

**USER INTERFACE SETTINGS (MB)**  
 FAN & LIGHT BUTTONS: SHOW BOTH (SEPERATE)

**USER INTERFACE SETTINGS (HCB)**  
 NA

**GENERAL SETTINGS**  
 TIME ZONE: CENTRAL DAYLIGHT (DEFAULT)

**FIRE FAULT SETTINGS**  
 EXHAUST DURING FIRE: MAX  
 SUPPLY DURING FIRE: OFF  
 LIGHTS DURING FIRE: OFF

**BMS SETTINGS**  
 MODBUS ADDRESS: 1  
 BAUD RATE: 9600

PRG VERSION: V3

**FAN CONFIGURATION**

FAN #	TYPE	FAN	FAN MARK	ZONE	MIN CFM	MAX CFM	MODBUS VFD	VFD ADDRESS	MIN FREQ	MAX FREQ	MIN VDC	MAX VDC
1	EXHAUST	E1	EF-1	Z1	900	1800	NO	-	-	-	5.0	10.0
2	SUPPLY	S1	SUPPLY	Z1	1000	2000	NO	-	-	-	5.0	10.0

**\*\*WHEN FIRE SYSTEM IS ARMED, FS-C TO FS-NC SHOULD HAVE CONTINUITY**

## EXHAUST FAN SCHEDULES

### EXHAUST FAN INFORMATION

FAN UNIT NO.	TAG	FAN UNIT MODEL #	CFM	ESP	RPM	H.P.	B.H.P.	Ø	VOLT	FLA	WEIGHT (LBS.)	SONES
1	EF-1	XRUD-140-VG	1,800	0.5	1,233	1.0	0.34	1	208	8.8	92	---

MPW ENGINEERING, LLC  
 110 W. 7TH STREET • SUITE 600 • TULSA, OK 74119  
 (918) 582-4088 • (918) 582-4087 FAX

---

**Casey's**

CASEY'S CONSTRUCTION DIVISION  
 One Convenience Blvd., P.O. Box 3001, Ankeny, Ia. 50021 515-965-6100

PROJECT: #4081 - Oklahoma City, OK. 4000 North Pennsylvania Ave. (ACQUISITION - Circle K)	PUBLISHED: 10.20.21 REVISED ON:	DRAWING INFORMATION: COMFORT COOLING WIRING
DRAWING INFORMATION: CONSTRUCTION DIVISION	DESIGNED BY: BHF/CAB	CHECKED BY: DAD

M-403

PROJECT NUMBER: 2100470