

HOOD INFORMATION - JOB#4707156

HOOD NO	TAG	MODEL	MANUFACTURER	LENGTH	MAX COOKING TEMP	TYPE	APPLIANCE DUTY	DESIGN CFM/FT	TOTAL EXH CFM	EXHAUST PLENUM RISER(S)				TOTAL SUPPLY CFM	HOOD CONSTRUCTION	HOOD CONFIG				
										WIDTH	LENG	HEIGHT	DIA			CFM	VEL	SP	END TO END	ROW
1	HD1-A	6024 ND-2-PSP-F	CAPTIVEAIRE	12' 0"	600 DEG	I	HEAVY	225	2700			4'	18"	2700	1528	-1.028'	2295	430 SS WHERE EXPOSED	LEFT	ALONE
2	HD1-B	6024 ND-2-PSP-F	CAPTIVEAIRE	10' 0"	600 DEG	I	HEAVY	175	1750			4'	14"	1750	1637	-0.816'	1488	430 SS WHERE EXPOSED	MIDDLE	ALONE
3	HD1-C	6024 ND-2-PSP-F	CAPTIVEAIRE	9' 6"	600 DEG	I	HEAVY	180	1710			4'	14"	1710	1600	-0.802'	1368	430 SS WHERE EXPOSED	RIGHT	ALONE
4	HD2-DISH	5424 VHB-G-REM-PSP-F	CAPTIVEAIRE	7' 0"	700 DEG	II	N/A	150	1050			4'	12"	1050	1337	-0.129'	840	430 SS 100%	ALONE	ALONE

PATENT NUMBERS

AC-PSP (UNITED STATES) - US PATENT 7963830 B2.
 AC-PSP WALL (CANADA) - CA PATENT 2820509.
 AC-PSP ISLAND (CANADA) - CA PATENT 2520330.

HOOD INFORMATION

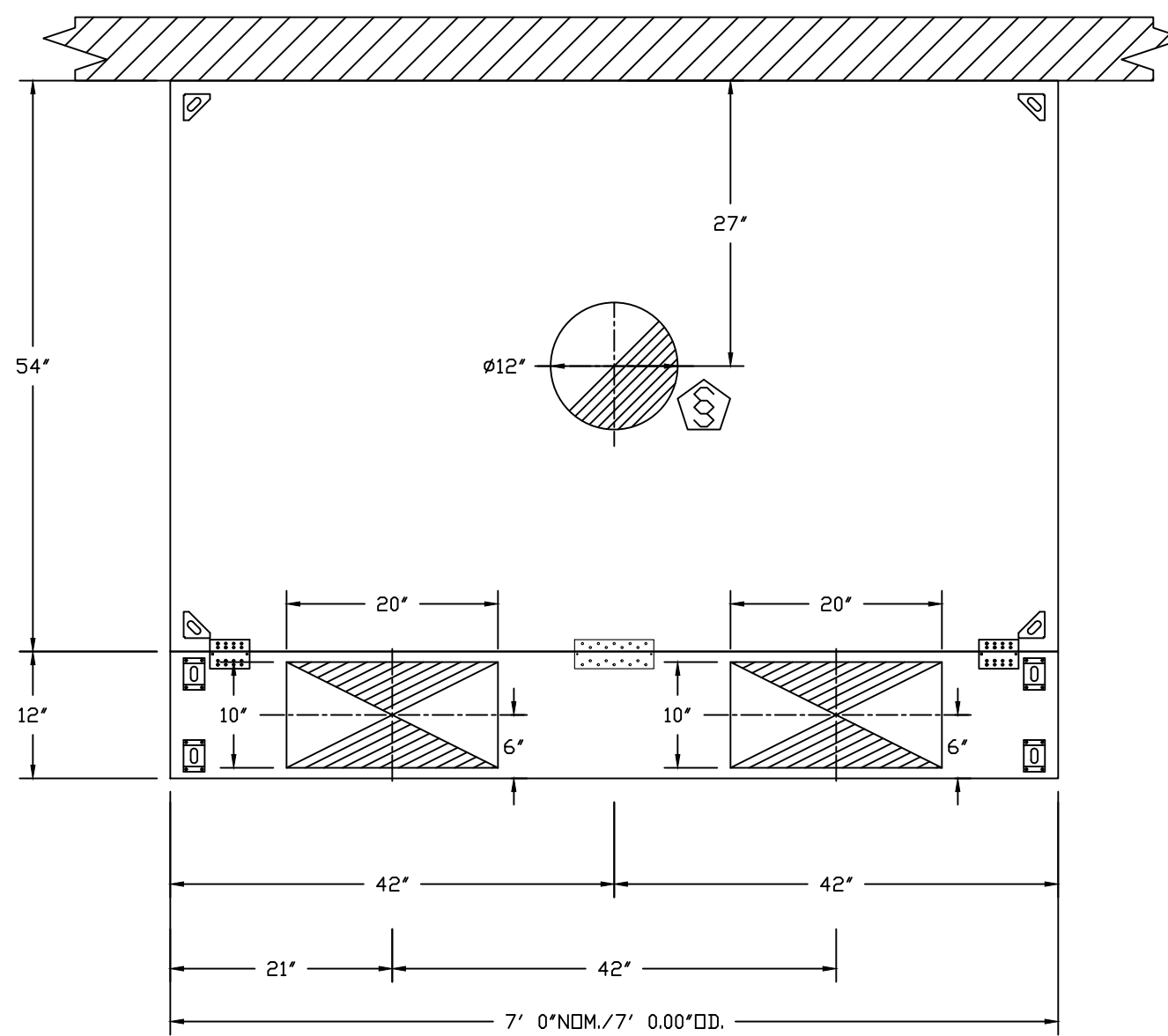
HOOD NO	TAG	FILTER(S)				LIGHT(S)				UTILITY CABINET(S)				FIRE SYSTEM PIPING	HOOD HANGING WEIGHT		
		TYPE	QTY	HEIGHT	LENGTH	EFFICIENCY @ 7 MICRONS	QTY	TYPE	WIRE GUARD	LOCATION	SIZE	TYPE	SIZE			MODEL #	QUANTITY
1	HD1-A	CAPTRATE SOLD FILTER	9	16"	16"	85% SEE FILTER SPEC	5	L55 SERIES E26	NO	LEFT	20"x60"x24"	ANSUL R102	3.0/3.0/3.0/3.0	DCV-2122	2 LIGHT 2 FAN	YES	861 LBS
2	HD1-B	CAPTRATE SOLD FILTER	7	16"	16"	85% SEE FILTER SPEC	4	L55 SERIES E26	NO							YES	530 LBS
3	HD1-C	CAPTRATE SOLD FILTER	7	16"	16"	85% SEE FILTER SPEC	4	L55 SERIES E26	NO							YES	524 LBS
4	HD2-DISH						0									NO	352 LBS

HOOD OPTIONS

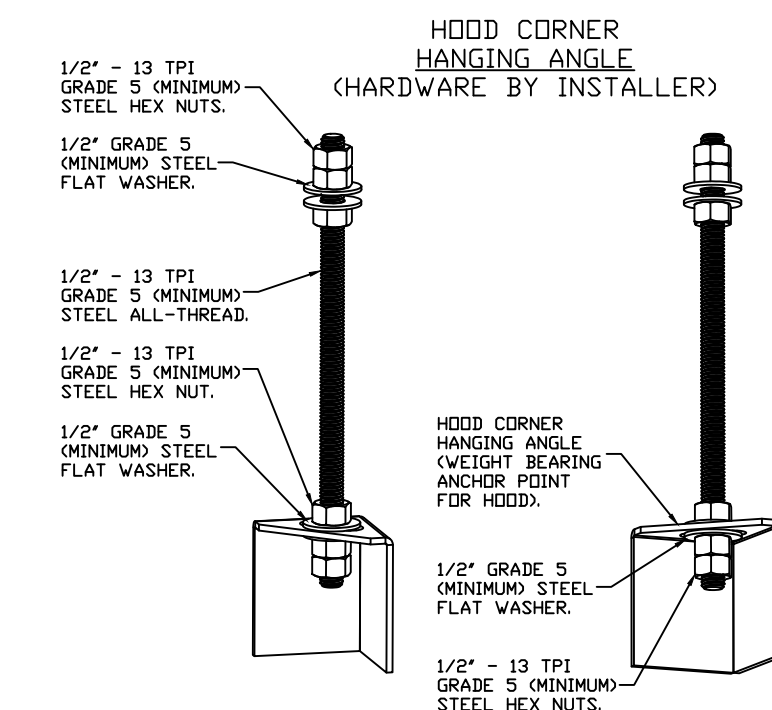
HOOD NO	TAG	OPTION
1	HD1-A	FIELD WRAPPER 7.00' HIGH FRONT, LEFT. BACKSPLASH 78.00' HIGH X 398.00' LONG 430 SS VERTICAL. LEFT QUARTER END PANEL 23' TOP WIDTH, 0' BOTTOM WIDTH, 23' HIGH 430 SS. BALANCE DAMPERS. SENSOR-CV.
2	HD1-B	FIELD WRAPPER 7.00' HIGH FRONT. SENSOR-CV.
3	HD1-C	FIELD WRAPPER 7.00' HIGH FRONT, RIGHT. RIGHT SIDESPLASH 120.00' HIGH X 78.00' LONG 430 SS VERTICAL. RIGHT QUARTER END PANEL 23' TOP WIDTH, 0' BOTTOM WIDTH, 23' HIGH 430 SS. SENSOR-CV.
4	HD2-DISH	FIELD WRAPPER 7.00' HIGH FRONT, LEFT, RIGHT.

PERFORATED SUPPLY PLENUM(S)

HOOD NO	TAG	POS	LENGTH	WIDTH	HEIGHT	TYPE	RISER(S)				
							WIDTH	LENG	DIA	CFM	SP
1	HD1-A	Front	164'	16'	6'	MUA	10"	28"		765	0.227'
							10"	28"		765	0.227'
							10"	28"		744	0.215'
2	HD1-B	Front	120'	14'	6'	MUA	10"	28"		744	0.215'
							10"	28"		744	0.215'
							10"	28"		684	0.183'
3	HD1-C	Front	114'	14'	6'	MUA	10"	28"		684	0.183'
							10"	28"		684	0.183'
							10"	20"		420	0.119'
4	HD2-DISH	Front	84'	12'	6'	MUA	10"	20"		420	0.119'
							10"	20"		420	0.119'

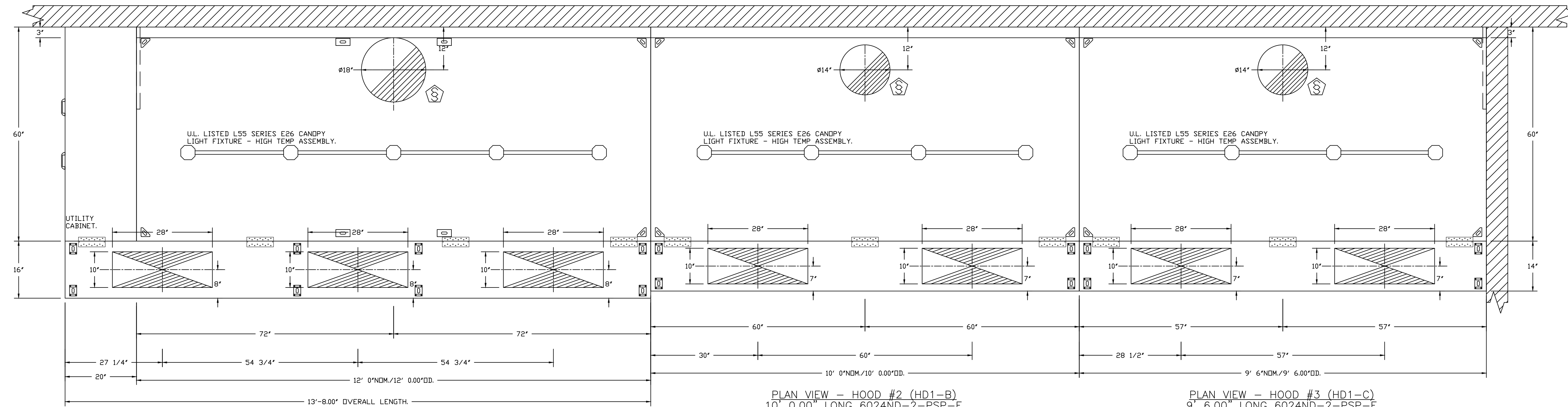


PLAN VIEW - HOOD #4 (HD2-DISH)
 7' 0.00" LONG 5424VHB-G-REM-PSP-F



ASSEMBLY INSTRUCTIONS

HANGING ANGLE MUST BE SUPPORTED WITH 1/2" - 13 TPI GRADE 5 (MINIMUM) ALL-THREAD. SANDWICH HANGING ANGLES AND CEILING ANCHOR POINTS WITH 1/2" GRADE 5 (MINIMUM) STEEL FLAT WASHERS AND 1/2" - 13 TPI GRADE 5 (MINIMUM) HEX NUTS AS SHOWN. MUST USE DOUBLED HEX NUT CONFIGURATION BENEATH HOOD HANGING ANGLES AND ABOVE CEILING ANCHORS. MAINTAIN 1/4" OF EXPOSED THREADS BENEATH BOTTOM HEX NUT. TORQUE ALL HEX NUTS TO 57 FT-LBS.



PLAN VIEW - HOOD #1 (HD1-A)
 12' 0.00" LONG 6024ND-2-PSP-F

PLAN VIEW - HOOD #2 (HD1-B)
 10' 0.00" LONG 6024ND-2-PSP-F

PLAN VIEW - HOOD #3 (HD1-C)
 9' 6.00" LONG 6024ND-2-PSP-F

NOTE: ADDITIONAL HANGING ANGLES PROVIDED FOR HOODS 12' AND LONGER.

CAPTIVE-AIRE HOODS ARE BUILT IN COMPLIANCE WITH UL 710 AND NFPA 96 AND ARE RECOGNIZED BY ONE OR MORE OF THE FOLLOWING:

ETL SANITATION LISTED
 ETL LISTED FILE# 3054804-001

HOOD SYSTEM IS FABRICATED & DESIGNED PER UL-710 STANDARDS

REVISIONS

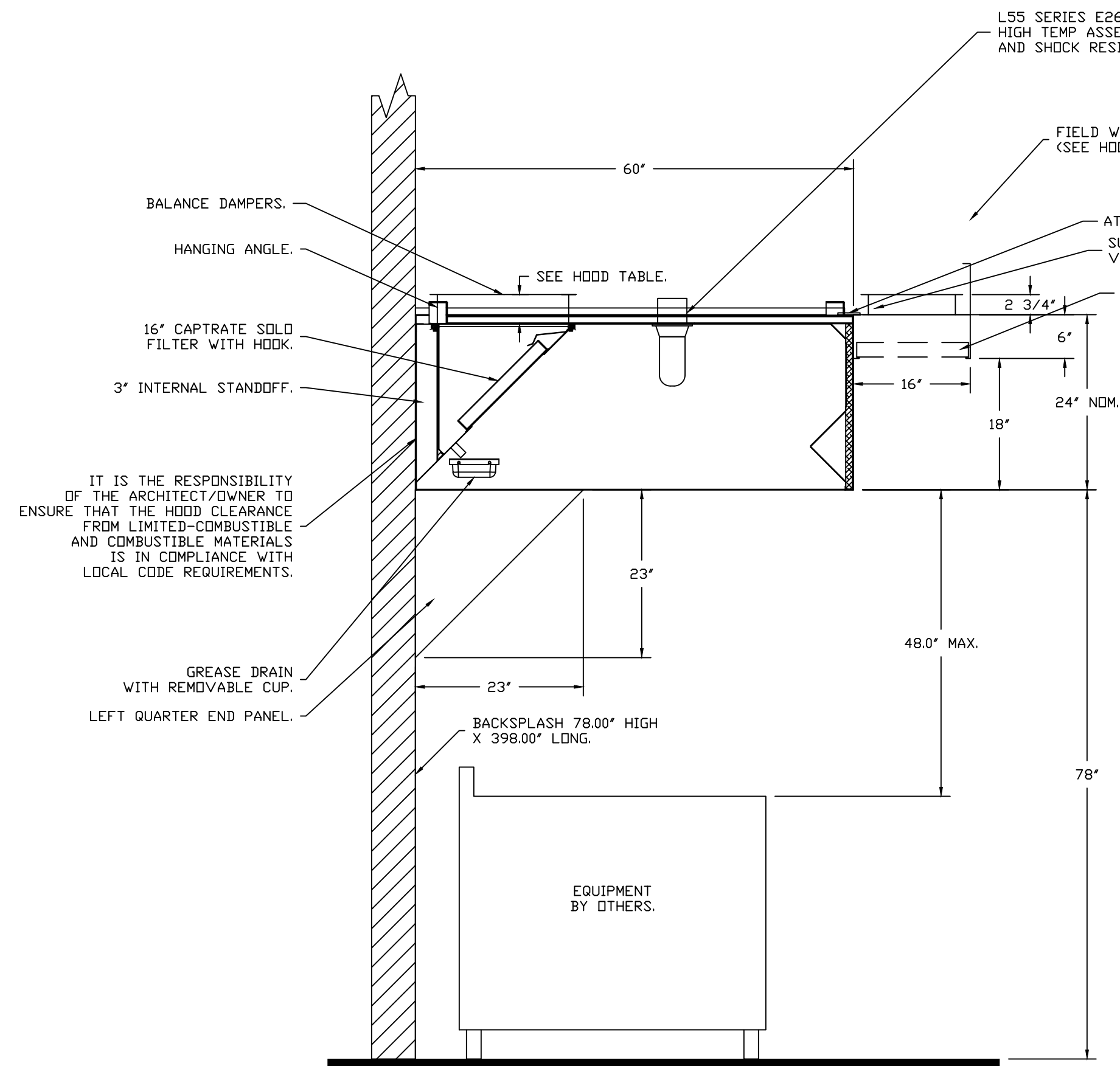
DESCRIPTION	DATE



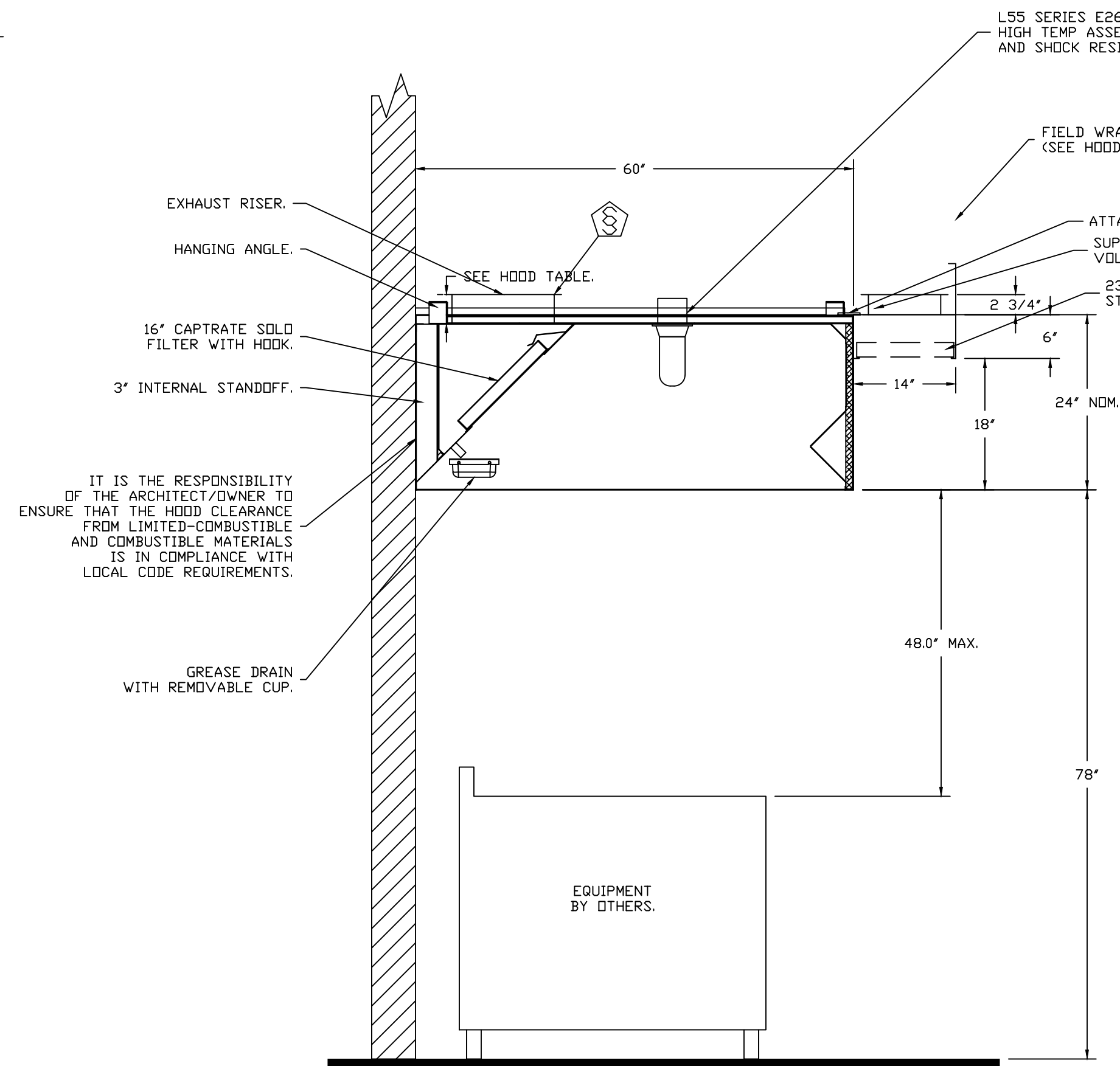
Marquee REV 3 (Ft Wayne, IN)
 FORT WAYNE, IN, 46825

DATE: 3/23/2021
 DWG.#: 4707156
 DRAWN BY: jcirilli
 SCALE: 3/4" = 1'-0"
 MASTER DRAWING

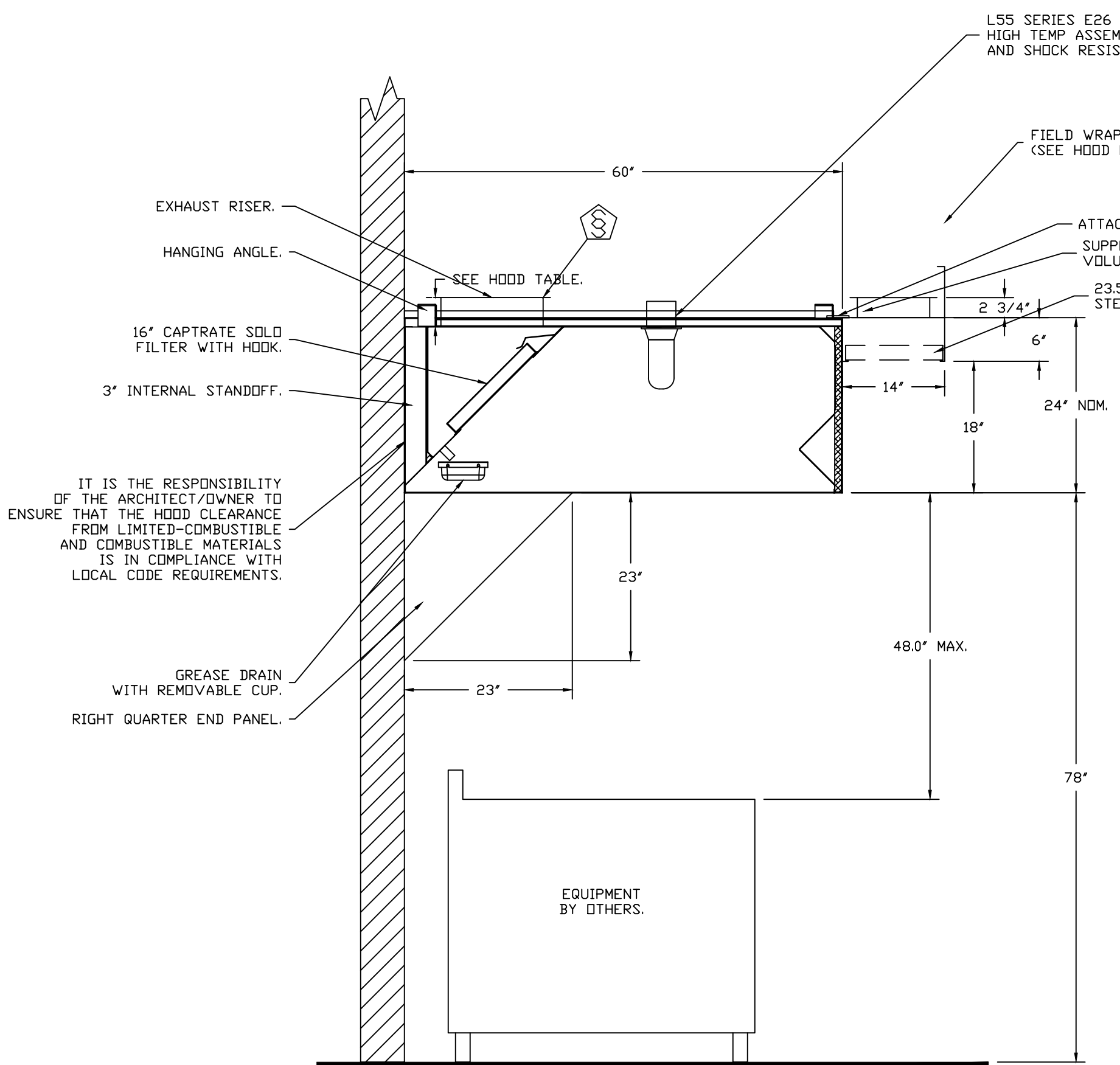
SHEET NO. 1



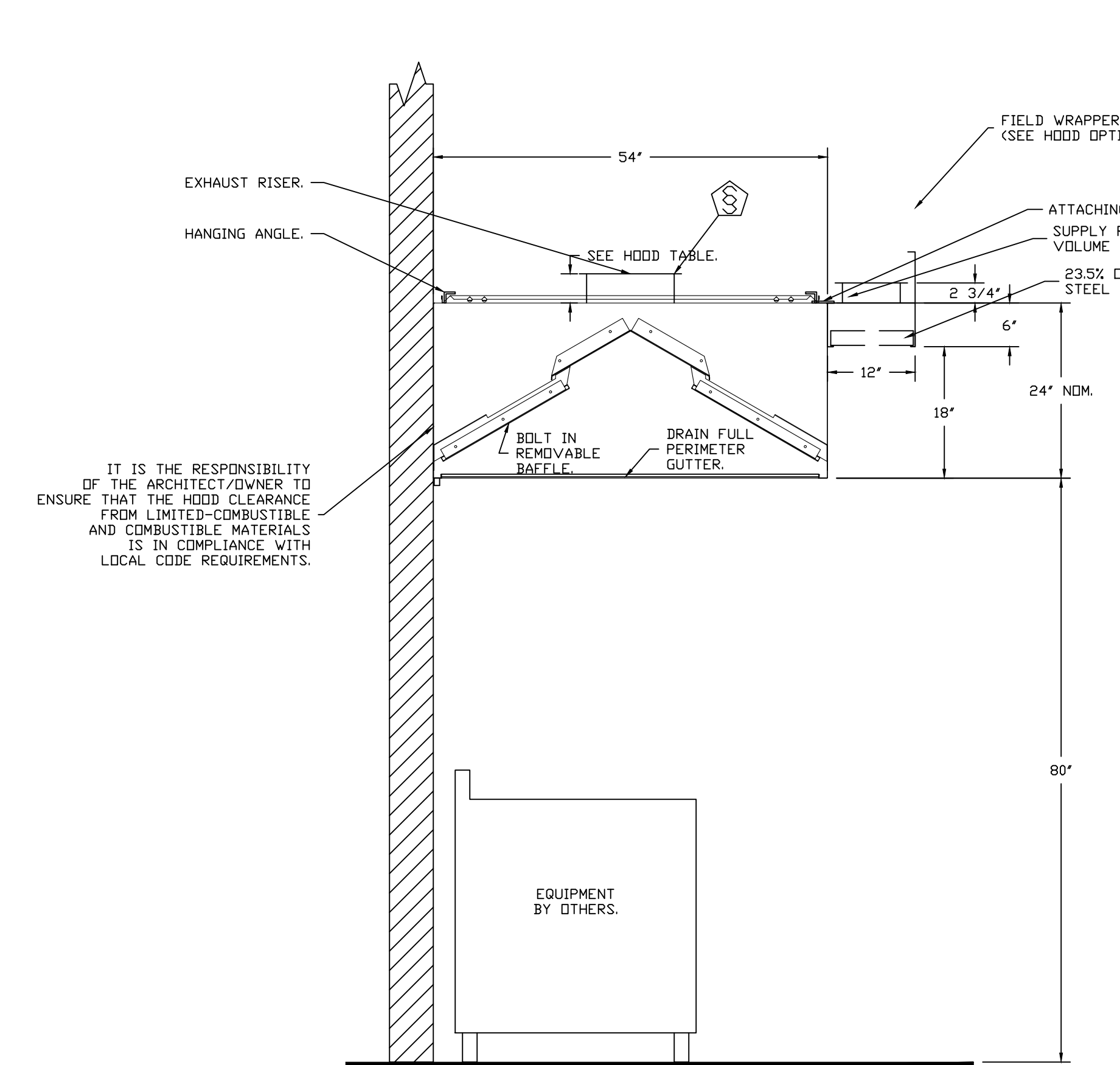
SECTION VIEW - MODEL 6024ND-2-PSP-F
HOOD - #1 (HD1-A)



SECTION VIEW - MODEL 6024ND-2-PSP-F
HOOD - #2 (HD1-B)



SECTION VIEW - MODEL 6024ND-2-PSP-F
HOOD - #3 (HD1-C)



SECTION VIEW - MODEL 5424VHB-C-REM-PSP-F
HOOD - #4 (HD2-DISH)

FOOD SERVICE CONTRACTOR IS RESPONSIBLE TO SUPPLY & INSTALL ALL HOODS, FANS, HOOD CONTROL PANEL, ANSUL SYSTEM, CAPTIVE-AIRE LISTED GREASE DUCT, SUPPLY DUCT, AND INSTALL WALL STAINLESS AROUND HOOD. CONTACT Scott Ellerhorst FOR ANY QUESTIONS AT 513-649-0422 OR sellerhorst@c-tdesign.com

CAPTIVE-AIRE HOODS ARE BUILT IN COMPLIANCE WITH UL 710 AND NFPA 96 AND ARE RECOGNIZED BY ONE OR MORE OF THE FOLLOWING:

ETL SANITATION LISTED
ETL LISTED FILE# 3054804-001

HOOD SYSTEM IS FABRICATED & DESIGNED PER UL-710 STANDARDS

REVISIONS	
DESCRIPTION	DATE

1329 East Kemper Rd., Ste. 4210, Cincinnati, OH, 45246 PHONE: (513) 860-5555 EMAIL: reg12@captivaire.com

CAPTIVE-AIRE
Air Solutions

Marquee REV 3 (Ft Wayne, IN)
FORT WAYNE, IN, 46825

DATE: 3/23/2021
DWG.#: 4707156
DRAWN BY: jcirilli
SCALE: 3/4" = 1'-0"
MASTER DRAWING

SHEET NO. 2

EXHAUST FAN INFORMATION - JOB#4707156

FAN UNIT NO	TAG	QTY	FAN UNIT MODEL #	MANUFACTURER	CFM	ESP	RPM	MOTOR ENCL	HP	BHP	PHASE	VOLT	FLA	DISCHARGE VELOCITY	WEIGHT (LBS)	SONES
1	KEF1	1	USBI30DD-RM	CAPTIVEAIRE	6160	2.200	959	DDP,PREMIUM	7.500	3.9450	3	208	22.3	1440 FPM	1025	30
2	KEF2-DISH	1	SIF13DD-SS	CAPTIVEAIRE	1050	0.400	1074	TEAD-ECM	1.000	0.2260	1	115	11.6		157	7

FAN OPTIONS

FAN UNIT NO	TAG	QTY	DESCRIPTION
1	KEF1	1	BI30 - INLET SERVICE DUCT CONNECTION. USED TO CONNECT TO STANDARD 24" GREASE DUCT OR FIELD WELDED DUCT. INCLUDES (2) 7" RISERS BOLTED TO STANDARD INLET RISER.
		1	UTILITY SET GREASE CUP.
		1	BI30 - 24" DISCHARGE EXTENSION.
		1	BI - DISCHARGE ORIENTATION VERTICAL UPPER LEFT - CW INLET SIDE.
		1	BI30 - INLET CONNECTION STANDARD 24" FLANGED GREASE DUCT.
		1	BI24-36-S HIGH TEMPERATURE HEAT & SMOKE OPTION.
		1	UTILITY SET - SPRING VIBRATION ISOLATORS - BI24 THRU BI30 / EQUIVALENT SIZED UTILITY SET - INDOOR/OUTDOOR USE.
2	KEF2-DISH	1	2 YEAR PARTS WARRANTY.
		1	SIF - HORIZONTAL OVERHEAD MOUNT - PRE-INSTALLED MOUNTS (11-36).
		1	HANGING SPRING VIBRATION ISOLATORS (SET OF 4), FOR INDOOR OR OUTDOOR USE WITH SQUARE INLINE FANS. (HSA125).
		1	SIF13 - INLET - STANDARD 14" DUCT CONNECTION.
		1	SIF13-SS - STRAIGHT DISCHARGE. STANDARD 14" DUCT CONNECTION.
3	MPUI-ALT	1	ECM WIRING PACKAGE - PWM SIGNAL FROM ECPM03 PREWIRE (TELCO MOTOR), CCW ROTATION.
		1	2 YEAR PARTS WARRANTY.
		1	MOTORIZED BACKDRAFT DAMPER FOR A3-D HOUSING. MEETS AMCA CLASS 1A RATING.
		1	LOW FIRE START.
		1	INLET PRESSURE GAUGE, 0-35".
		1	MANIFOLD PRESSURE GAUGE, -5 TO 15" WC.
		1	10 TON 2 CIRCUIT (5/5) MODULAR PACKAGED COOLING OPTION FOR SIZE 3 DF/EH MUA (3,600 TO 6,000 CFM), 208V/230V, 3 PHASE. COOLING THERMOSTAT OR PROGRAMMABLE STAT REQUIRED FOR PROPER OPERATION.
		1	COOLING THERMOSTAT AND RELAY (NOT REQ FOR EVAP).
		1	OPPOSITE SIDE HEATER CONTROLS.
		1	UPTURN PLENUM FOR SIZE 3 DX COIL MODULE.
		1	SEPARATE 120V WIRING PACKAGE (REQUIRED AND USED ONLY FOR DCV OR PREWIRE WITH VFD) - THREE PHASE ONLY.
1	2 YEAR PARTS WARRANTY.		

FAN ACCESSORIES

FAN UNIT NO	TAG	EXHAUST				SUPPLY			
		GREASE CUP	GRAVITY DAMPER	WALL MOUNT	SIDE DISCHARGE	GRAVITY DAMPER	MOTORIZED DAMPER	WALL MOUNT	
1	KEF1	YES							
2	KEF2-DISH								
3	MPUI-ALT						YES		

CURB ASSEMBLIES

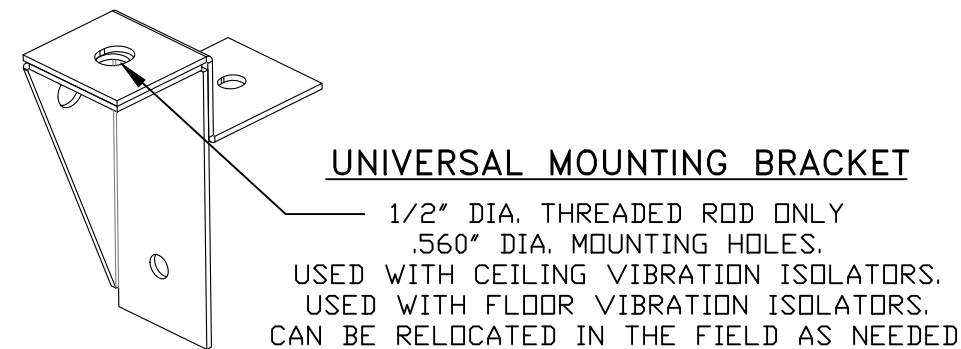
NO	DN FAN	TAG	WEIGHT	ITEM	SIZE
3	# 3	MPUI-ALT	112 LBS	CURB	35.000"W X 84.000"L X 14.000"H INSULATED.
	# 3			RAIL	6.000"W X 35.000"L X 14.000"H.

FOOD SERVICE CONTRACTOR IS RESPONSIBLE TO SUPPLY & INSTALL ALL HOODS, FANS, HOOD CONTROL PANEL, ANSUL SYSTEM, CAPTIVE-AIRE LISTED GREASE DUCT, SUPPLY DUCT, AND INSTALL WALL STAINLESS AROUND HOOD. CONTACT Scott Ellerhorst FOR ANY QUESTIONS AT 513-649-0422 OR sellerhorst@c-t-design.com

- FEATURES:**
- DIRECT DRIVE CONSTRUCTION (NO BELTS/PULLEYS).
 - TWO ACCESS DOORS FOR EASY ACCESS.
 - BACKWARD INCLINED NON-OVERLOADING WHEELS.
 - UL705 LISTING.
 - AMCA AIR & SOUND CERTIFIED.
 - THERMAL OVERLOAD PROTECTION (SINGLE PHASE).
 - 2" NPT THREADED DRAIN CENTERED IN BASE (SS MODELS).

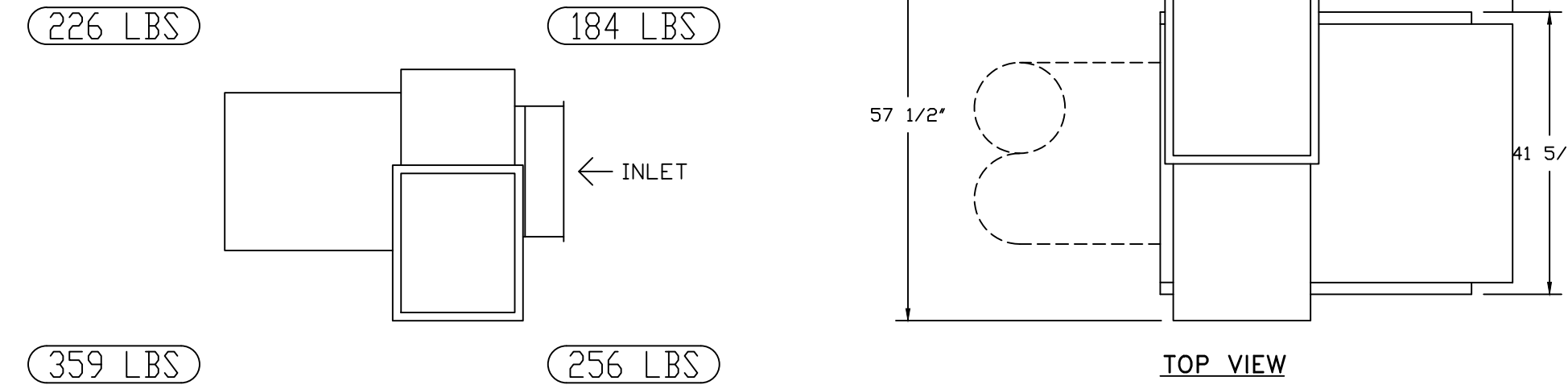
- OPTIONS**
- SIF - HORIZONTAL OVERHEAD MOUNT - PRE-INSTALLED MOUNTS (11-36).
 - HANGING SPRING VIBRATION ISOLATORS (SET OF 4), FOR INDOOR OR OUTDOOR USE WITH SQUARE INLINE FANS. (HSA125).
 - SIF13 - INLET - STANDARD 14" DUCT CONNECTION.
 - SIF13-SS - STRAIGHT DISCHARGE. STANDARD 14" DUCT CONNECTION.
 - ECM WIRING PACKAGE - PWM SIGNAL FROM ECPM03 PREWIRE (TELCO MOTOR), CCW ROTATION.
 - 2 YEAR PARTS WARRANTY.

FAN #3 SIF13DD-SS - EXHAUST FAN (KEF2-DISH)

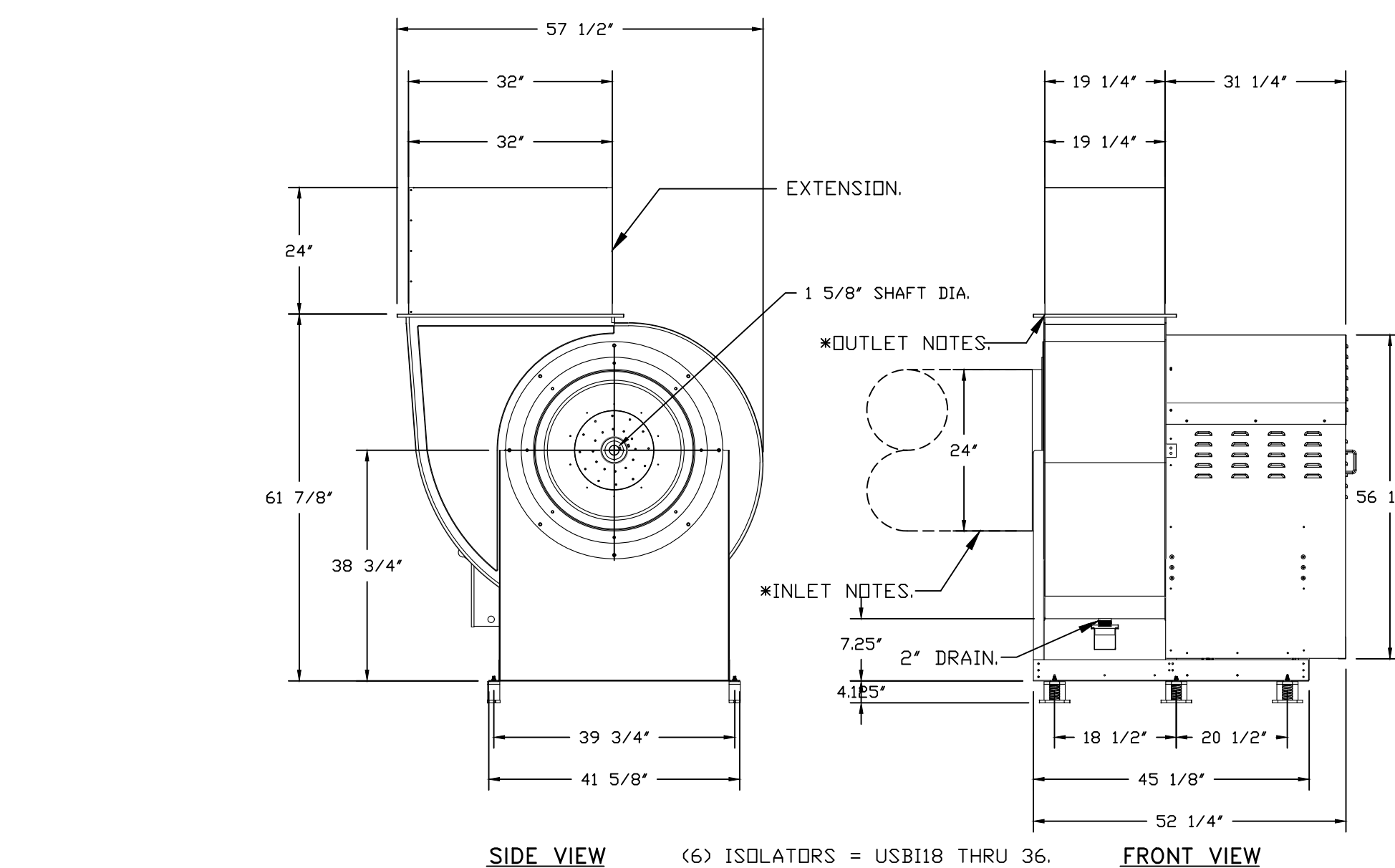


* INLET/OUTLET NOTES:
LENGTH OF THE STRAIGHT DUCT ON THE INLET AND OUTLET TO BE 3 TIMES THE EQUIVALENT DUCT DIAMETER BEFORE CONNECTING TO ANY FITTINGS SUCH AS ELBOWS TO AVOID SYSTEM EFFECT.

UNIT PLAN VIEW CORNER WEIGHTS:



FAN #1 USBI30DD-RM-S - EXHAUST FAN (KEF1)



NORMAL TEMPERATURE TEST DIRECT DRIVE EXHAUST FAN MUST OPERATE CONTINUOUSLY WHILE EXHAUSTING AIR AT 350°F (176°C) UNTIL ALL FAN PARTS HAVE REACHED THERMAL EQUILIBRIUM, AND WITHOUT ANY DETERIORATING EFFECTS TO THE FAN WHICH WOULD CAUSE UNSAFE OPERATION.

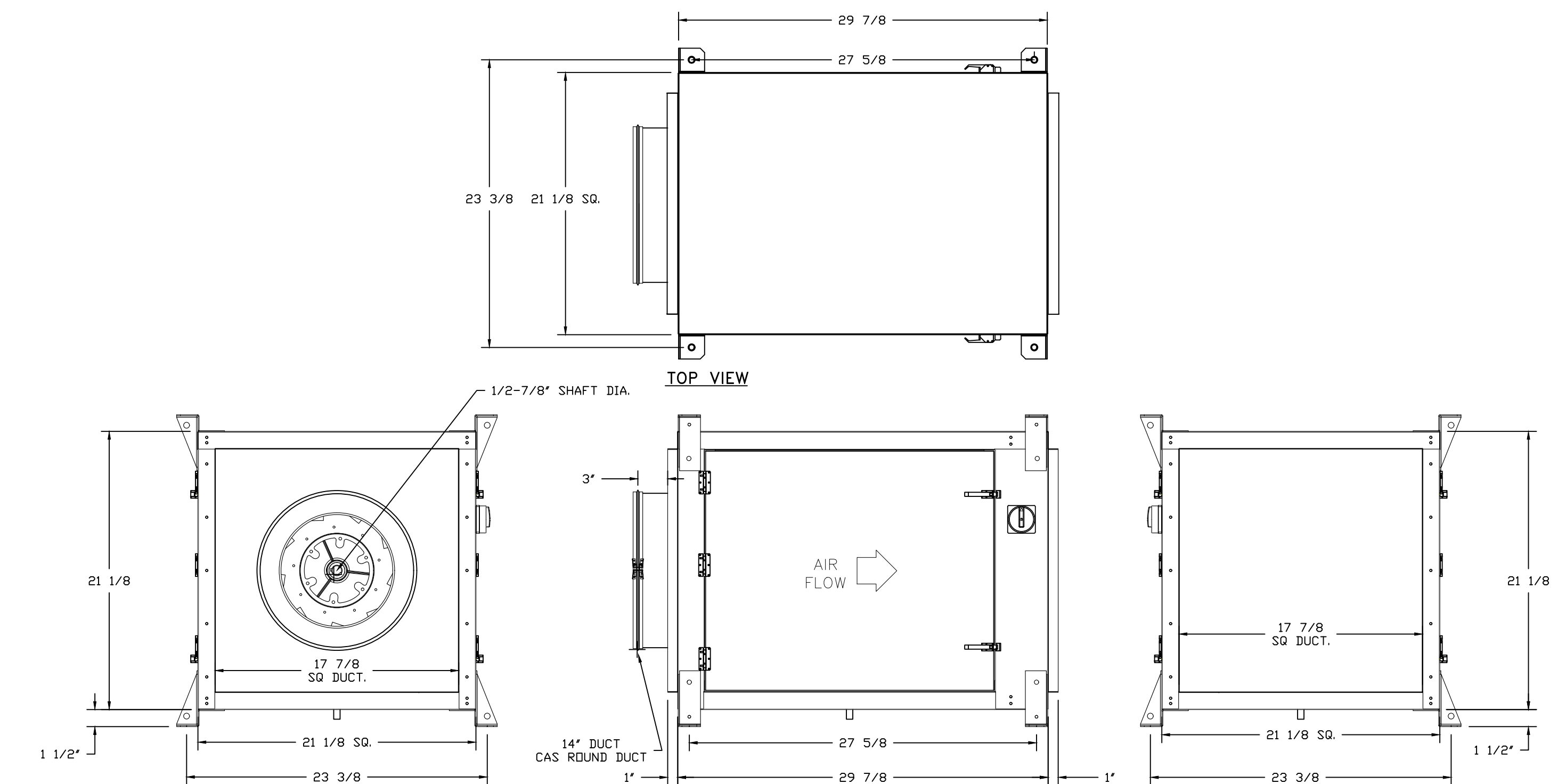
CORNER WEIGHTS ARE CALCULATED BASED ON VERTICAL DISCHARGE. SUPPORT DUCT PROPERLY BEFORE FAN TO ENSURE CORNER WEIGHTS ARE NOT AFFECTED.

FEATURES:

- ROOF MOUNTED FANS.
- UL705.
- UL762 AND ULC-S645 (RESTAURANT MODEL).
- HIGH HEAT OPERATION DIRECT DRIVE 350°F (176°C).
- HEAT SLINGER.
- NEMA 3R SAFETY DISCONNECT SWITCH.
- GREASE CLASSIFICATION TESTING.
- 2" DRAIN.
- MOTOR WEATHER COVER.
- FULLY SEALED SCROLL HOUSING.
- SCROLL ACCESS DOOR.
- FLANGE 2".

OPTIONS

- BI30 - INLET SERVICE DUCT CONNECTION. USED TO CONNECT TO STANDARD 24" GREASE DUCT OR FIELD WELDED DUCT. INCLUDES (2) 7" RISERS BOLTED TO STANDARD INLET RISER.
- UTILITY SET GREASE CUP.
- BI30 - 24" DISCHARGE EXTENSION.
- BI - DISCHARGE ORIENTATION VERTICAL UPPER LEFT - CW INLET SIDE.
- BI30 - INLET CONNECTION STANDARD 24" FLANGED GREASE DUCT.
- BI24-36-S HIGH TEMPERATURE HEAT & SMOKE OPTION. - 572°F CONTINUOUS.
- UTILITY SET - SPRING VIBRATION ISOLATORS - BI24 THRU BI30 / EQUIVALENT SIZED UTILITY SET - INDOOR/OUTDOOR USE.
- 2 YEAR PARTS WARRANTY.



NOTES:
- DWXXFRISER USED WHEN CONNECTING TO STANDARD DUCT.
- DWXXFRISERS ARE INSTALLED ON THE INTAKE AND/OR DISCHARGE SIDES.

REVISIONS

DESCRIPTION	DATE

CAPTIVE Air Solutions
1329 East Kemper Rd., Ste. 4210, Cincinnati, OH, 45246 PHONE: (513) 860-5555 EMAIL: reg12@captivaire.com

Marquee REV 3 (Ft Wayne, IN)
FORT WAYNE, IN, 46825

DATE: 3/23/2021
DWG.#: 4707156
DRAWN BY: jcirilli
SCALE: 3/4" = 1'-0"
MASTER DRAWING

SHEET NO. 3

CONDENSER DETAILS

FAN UNIT NO	TAG	FAN UNIT MODEL #	CONDENSER NO	TONNAGE	VOLTAGE	PHASE	FREQUENCY	MCA	RLA	MAX FUSE SIZE	MIN WIRE SIZE	SEER
3	MPUI-ALT	A3-D.500-24D-MPU	1	5	208-230	3 PHASE	60 HZ	21.4 AMPS	17.4 AMPS	30 AMPS	10 AWG	14
			2	5	208-230	3 PHASE	60 HZ	21.4 AMPS	17.4 AMPS	30 AMPS	10 AWG	14

MUA FAN INFORMATION - JOB#4707156

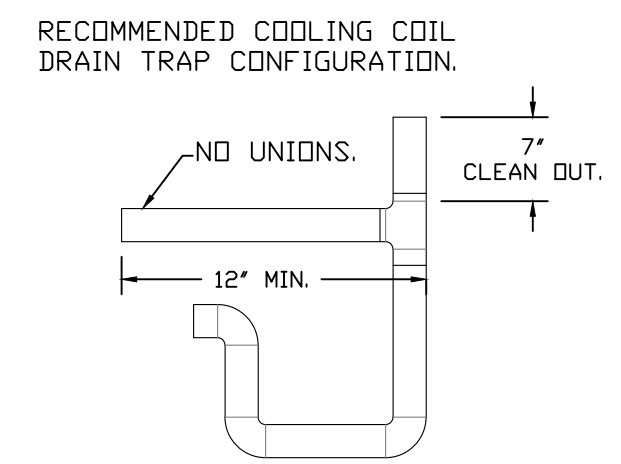
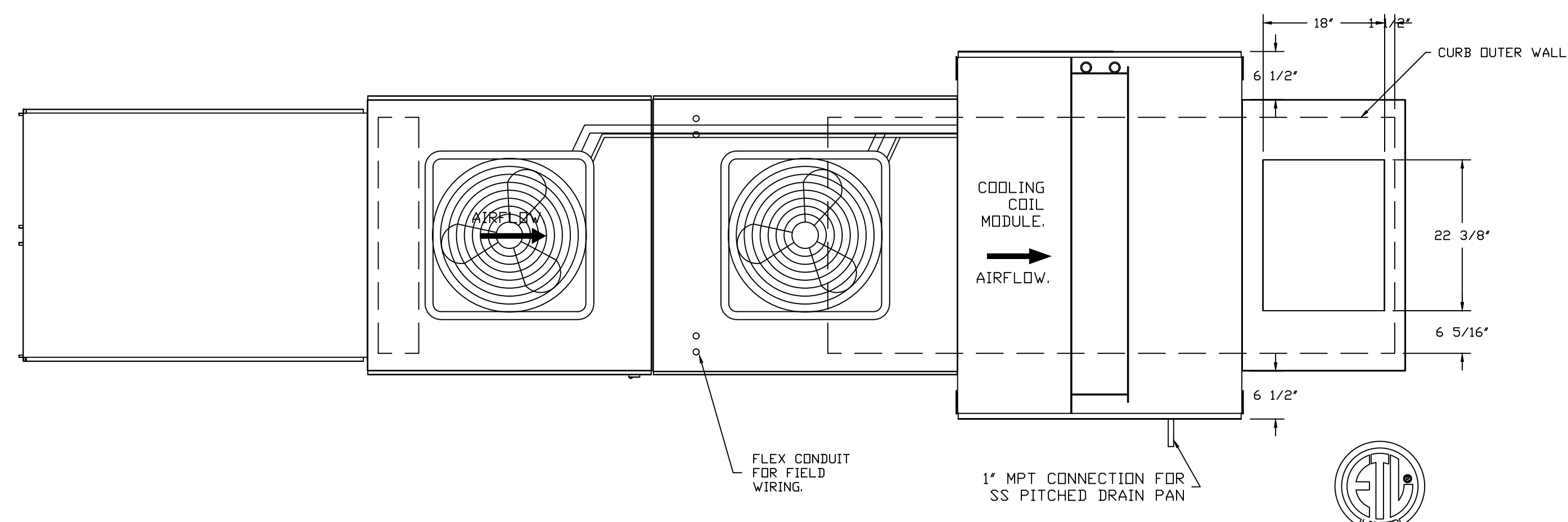
FAN UNIT NO	TAG	QTY	FAN UNIT MODEL #	BLOWER	HOUSING	MIN CFM	DESIGN CFM	ESP	RPM	MOTOR ENCL	HP	BHP	PHASE	VOLT	FLA	MCA	MDCP	WEIGHT (LBS)	SDNES
3	MPUI-ALT	1	A3-D.500-24D-MPU	24MF-3-MOD	A3-D.500	3500	5991	0.500	1561	ODP, PREMIUM	10.000	7.1040	3	208	27.0	33.8A	60A	1950	16.4

COILS - JOB#4707156

FAN UNIT NO	TAG	COIL TYPE	DESIGN CFM	COOLING										HEATING											
				ENTERING DB TEMP	ENTERING WB TEMP	LEAVING DB TEMP	LEAVING WB TEMP	ENTERING FLUID TEMP	LEAVING FLUID TEMP	FLUID FLOW RATE	PERCENT GLYCOL	TOTAL CAPACITY	SENSIBLE CAPACITY	LATENT CAPACITY	ENTERING DB TEMP	LEAVING DB TEMP	ENTERING FLUID TEMP	LEAVING FLUID TEMP	FLUID FLOW RATE	PERCENT GLYCOL	STEAM PRESSURE	TOTAL CAPACITY	SENSIBLE CAPACITY		
3	MPUI-ALT	DX	5991	88.0°F	73.0°F	77.0°F	68.0°F	---	---	---	---	107.4 MBH	67.9 MBH	39.5 MBH	---	---	---	---	---	---	---	---	---	---	---

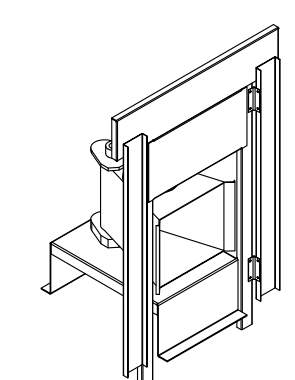
GAS FIRED MAKE-UP AIR UNIT(S)

FAN UNIT NO	TAG	INPUT BTUs	OUTPUT BTUs	TEMP RISE	REQUIRED INPUT GAS PRESSURE	GAS TYPE	BURNER EFFICIENCY(%)
3	MPUI-ALT	479954	441558	71°F	7 IN. W.C. - 14 IN. W.C.	NATURAL	92

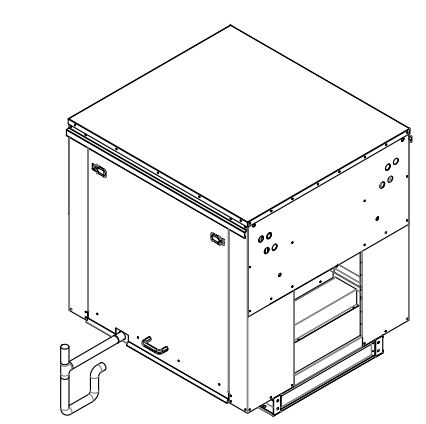


- NOTES:
 1) 1" DIAMETER PVC PIPE ONLY.
 2) USE ONLY LOW PROFILE COUPLINGS.
 3) ADD CLEAN OUT AS SHOWN.

TYPICAL DRAIN TRAP INSTALL

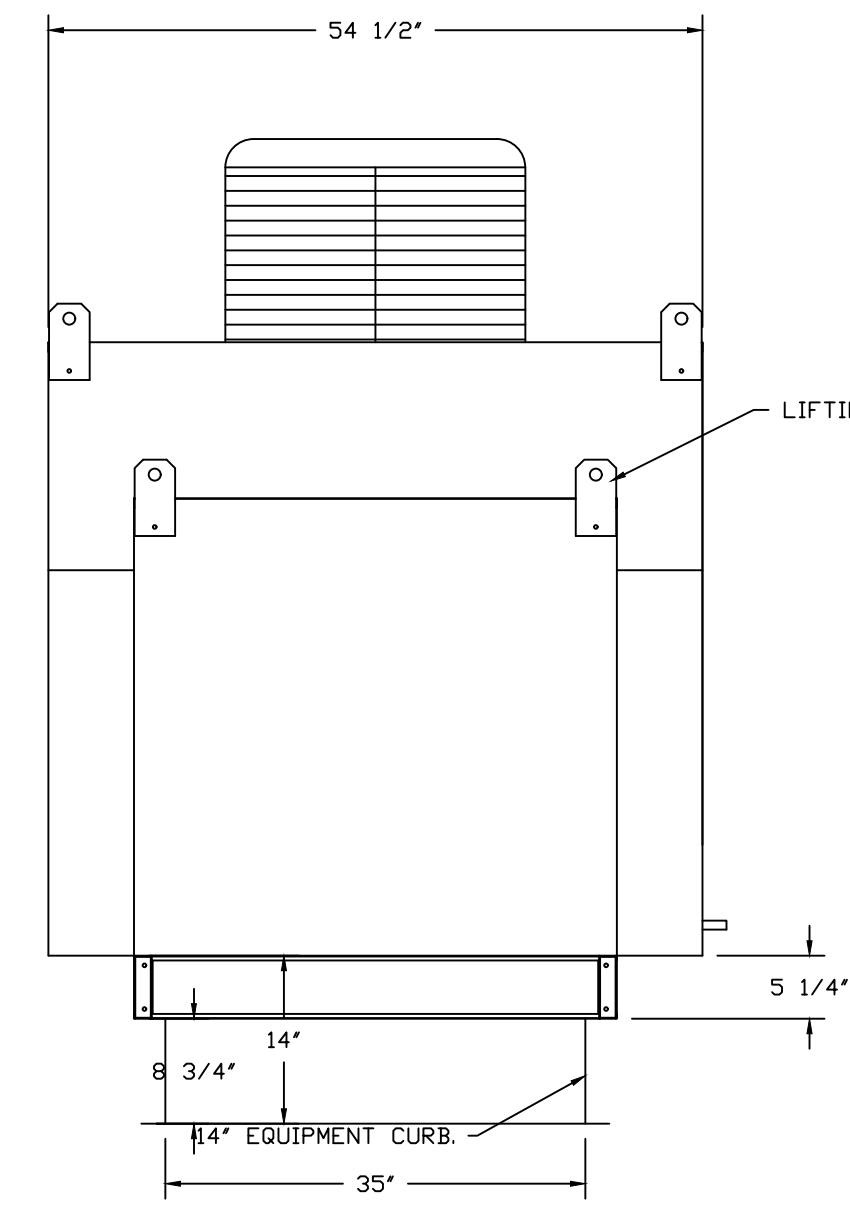
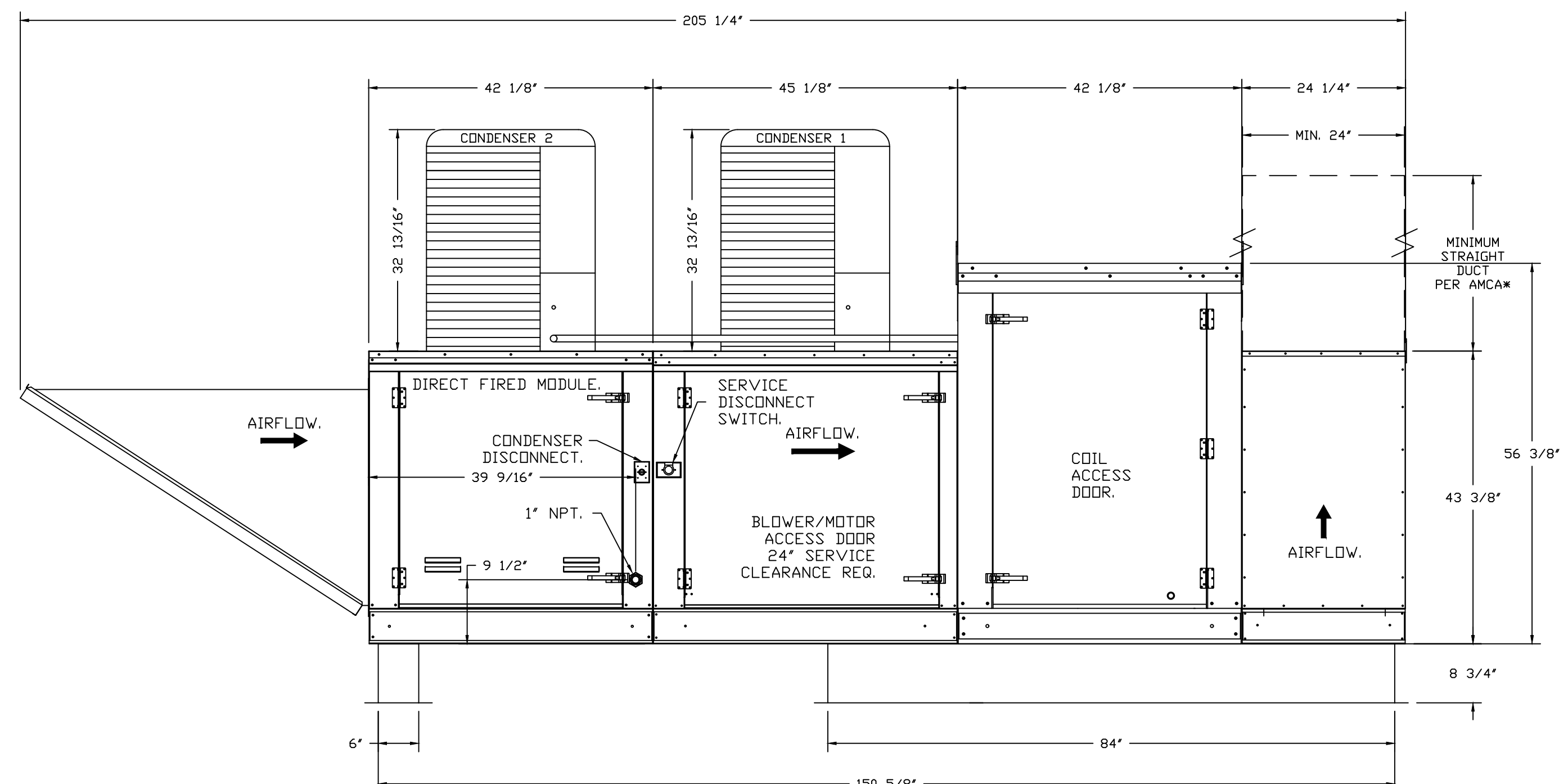


DIRECT FIRED (DF) PROFILE PLATE ASSEMBLY



SUPPLY SIDE HEATER INFORMATION:
 WINTER TEMPERATURE = 4°F. TEMP. RISE = 71°F.
 BTUS CALCULATED OFF ACTUAL AIR DENSITY.
 OUTPUT BTUS AT ALTITUDE OF 0.0 FT. = 454430.
 INPUT BTUS AT ALTITUDE OF 0.0 FT. = 493946.
 OUTPUT BTUS AT ALTITUDE OF 793 FT. = 441558.
 INPUT BTUS AT ALTITUDE OF 793 FT. = 479955.

FOOD SERVICE CONTRACTOR IS RESPONSIBLE TO SUPPLY & INSTALL ALL HOODS, FANS, HOOD CONTROL PANEL, ANSUL SYSTEM, CAPTIVE-AIRE LISTED GREASE DUCT, SUPPLY DUCT, AND INSTALL WALL STAINLESS AROUND HOOD. CONTACT Scott Ellerhorst FOR ANY QUESTIONS AT 513-649-0422 OR sellerhorst@c-tdesign.com



- FAN #3 A3-D.500-24D-MPU - HEATER (MPUI-ALT)
 1. DIRECT GAS FIRED HEATED MAKE UP AIR UNIT WITH 24" MIXED FLOW DIRECT DRIVE FAN AND 12" BURNER.
 2. INTAKE HOOD WITH EZ FILTERS.
 3. UP DISCHARGE - AIR FLOW LEFT -> RIGHT.
 4. MOTORIZED BACK DRAFT DAMPER 30" X 30" FOR SIZE 3 STANDARD & MODULAR HEATER UNITS W/EXTENDED SHAFT, STANDARD GALVANIZED CONSTRUCTION, 3/4" REAR FLANGE, LOW LEAKAGE, NF-BUP-3 ACTUATOR INCLUDED.
 5. LOW FIRE START. ALLOWS THE BURNER CIRCUIT TO ENERGIZE WHEN THE MODULATION CONTROL IS IN A LOW FIRE POSITION.
 6. GAS PRESSURE GAUGE, 0-35", 2.5" DIAMETER, 1/4" THREAD SIZE.
 7. GAS PRESSURE GAUGE, -5 TO +15 INCHES WC., 2.5" DIAMETER, 1/4" THREAD SIZE.
 8. 10 TON, DUAL CIRCUIT (S/S) MODULAR PACKAGED COOLING OPTION FOR SIZE 3 DF/EH MODULAR PACKAGED UNIT. INCLUDES CONDENSER, DX COIL, FILTER/DRYER KIT, THERMAL EXPANSION VALVE, R410A REFRIGERANT, AND REFRIGERANT PIPING. (3,600 TO 6,000 CFM) WHEN ORDERED WITH OPPOSITE AIRFLOW CONDENSERS ACCESS AND COIL PIPING WILL REMAIN IN STANDARD POSITION. DRAIN AND SLEDS WILL MOVE TO THE OPPOSITE SIDE. ANY OTHER CHANGE WILL REQUIRE CLI. CONDENSERS REQUIRE SEPARATE 208V, 3 PHASE POWER SUPPLY UNLESS ORDERED WITH SINGLE POINT CONNECTION. COIL = 3E20602M.
 9. DX COOLING INTAKE AIR THERMOSTAT AND RELAYS MOUNTED IN UNIT - SET POINT FOR THERMOSTAT SHOULD BE 85°F.
 10. MOUNT MOTOR AND CONTROLS ON OPPOSITE SIDE OF HEATER.
 11. UP TURN PLENUM FOR SIZE 3 COOLING COIL MODULE - REQUIRED FOR UP DISCHARGE COOLING COIL APPLICATIONS.
 12. SEPARATE 120VAC WIRING PACKAGE FOR MAKE-UP AIR UNITS. OPTION MUST BE SELECTED WHEN MOUNTING VFD IN PREWIRE PANEL OR WITH DCV PACKAGE. PROVIDES SEPARATE 120VAC INPUT TO SUPPLY FAN. THIS 120V SIGNAL MUST BE RUN BY ELECTRICIAN FROM DCV TO MUA SWITCH.
 13. HINGED DOUBLE WALL INSULATED DDOOR ASSEMBLY (BURNER/BLOWER/MPU SECTION).
 14. 2 YEAR PARTS WARRANTY.
- NOTE: SUPPLY DUCT MUST BE INSTALLED TO MEET SMACNA STANDARDS. A MINIMUM STRAIGHT DUCT LENGTH MUST BE MAINTAINED DOWNSTREAM OF UNIT DISCHARGE AS OUTLINED IN AMCA PUBLICATION 201. WHEN USING RECTANGULAR DUCTWORK, ELBOWS MUST BE RADIUS THROAT, RADIUS BACK WITH TURNING VANES. FLEXIBLE DUCTWORK AND SQUARE THROAT/SQUARE BACK ELBOWS SHOULD NOT BE USED. ANY TRANSITION AND/OR TURNS IN THE DUCTWORK WILL CAUSE SYSTEM EFFECT. SYSTEM EFFECT WILL DRASTICALLY INCREASE STATIC PRESSURE AND REDUCE AIRFLOW. DO NOT RELY ON UNIT TO SUPPORT DUCT IN ANY WAY. FAILURE TO PROPERLY SIZE DUCTWORK MAY CAUSE SYSTEM EFFECTS AND REDUCE PERFORMANCE OF THE EQUIPMENT.
 SUGGESTED STRAIGHT DUCT SIZE IS 24" X 24".

REVISIONS

DESCRIPTION	DATE:

CAPTIVE-AIRE
 Air Solutions
 1329 East Kemper Rd., Ste. 4210, Cincinnati, OH, 45246 PHONE: (513) 860-5555 EMAIL: reg12@captivaire.com

Marquee REV 3 (Ft Wayne, IN)
 FORT WAYNE, IN, 46825

DATE: 3/23/2021
 DWG.#: 4707156
 DRAWN BY: jcirilli
 SCALE: 3/4" = 1'-0"
 MASTER DRAWING

SHEET NO. 4

