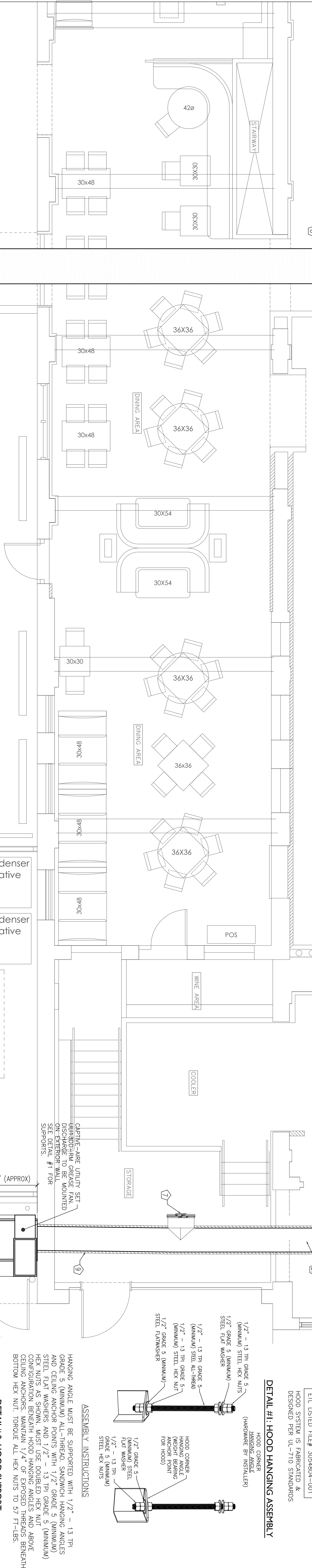
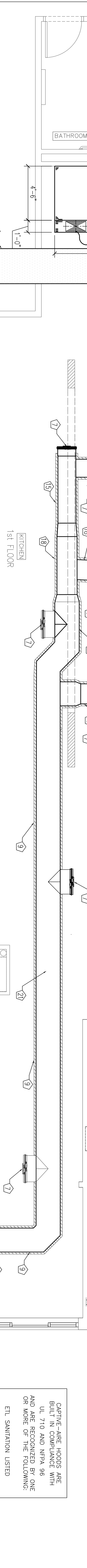
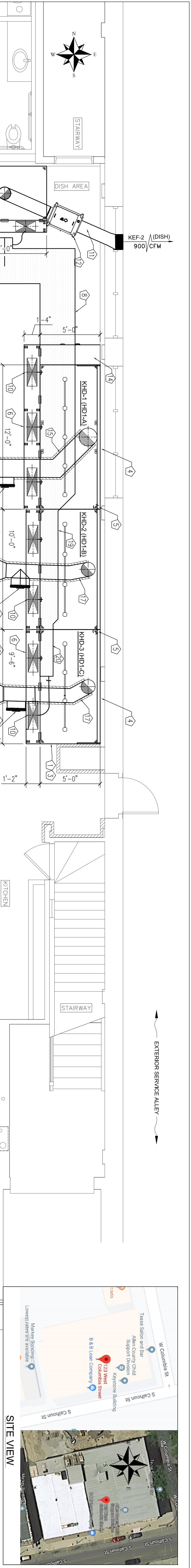


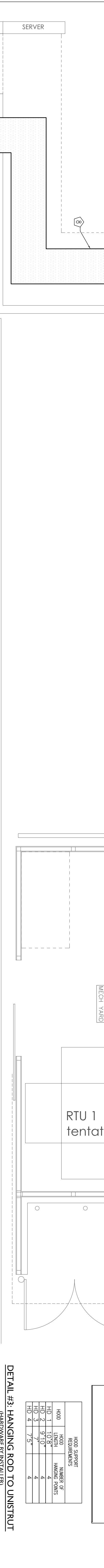
DATE: 03/26/21

DRAWN BY: JAH

SCALE: NONE
REVISION: NONE
DATE:



PLAN VIEW - HOOD #1, 2 & 3 & DISHWASHER HOOD
SCALE: 1/4" = 1'-0"



KEY NOTES

- 1 CAPTIVE-AIRE ETL LISTED HOOD IN 54" COORDINATES TO UL710 SEE CAPTIVE-AIRE
- 2 STAINLESS STL WALL PANEL BELOW & LEFT RIGHT OF HOOD FROM FLOOR TO CEILING. ALSO 18" PASS THE HOOD TO LEFT & RIGHT (MINIMUM)
- 3 CANOPY TYPE HOOD. EXPOSED SIDE & FRONT FROM COOKING SERVICE (SEE CAPTIVE-AIRE LISTING SHEET)
- 4 METAL STUD W/ CEMENT WALL
- 5 HANGING ROD (SEE DETAILS #1, #2 & #3)
- 6 FACTORY BUILT SS DEDICATED SUPPLY PLENUM FOR WVA
- 7 GREASE CLEANOUT DOOR (REMOVABLE BY HAND)
- 8 35" X 18" (OR EQUIV) DUCT TO MVA-1 UNIT.
- 9 24" DIA CAPTIVE-AIRE STAINLESS STEEL FACTORY BUILT GREASE DUCTWORK (SEE SPECIFICATIONS THIS SHEET H-1) WITH QTY (SEE DETAIL #1)
- 10 12" DIA (OR EQUIV) SUPPLY DUCT TO HOOD PLENUMS TO X 28" SUPPLY COLLARS. (SEE DETAIL #1)
- 11 12" DIA (OR EQUIV) SUPPLY DUCT TO HOOD FROM DSH HOOD TO FAN-(CROSS-VE) DUCT FROM DSH HOOD TO FAN.
- 12 IN-LINE EXHAUST FAN (120V, 1PH, 20AMP) TAGKER-2
- 13 GAS FIRED WVA GAS. CONNECTED BY FLOORER. ACCESS SYSTEM ON THIS SIDE.
- 14 HOOD CONTROLS & ANSUL (UL300) HOOD IN LISTED CABINET & ANSUL (UL300) HOOD IN 18" DIA CAPTIVE-AIRE STAINLESS STEEL SPECIFICATIONS THIS SHEET H-1) WITH QTY (2) LAYERS OF FIRE-RATED WRAP.
- 15 WALL CURB/PACKET 6" MIN WITH HINGE ASSEMBLY TO ACCESS FOR CLEANING. FANS TO DISCHARGE A MIN OF 40' FROM EXTERIOR BRICK WALL. SEE WALL MOUNT WITH CURB DETAIL ON DWG SHEET H-2
- 16 14" DIA CAPTIVE-AIRE STAINLESS STEEL FACTORY BUILT GREASE DUCTWORK (SEE SPECIFICATIONS THIS SHEET H-1) WITH QTY (2) LAYERS OF FIRE-RATED WRAP.
- 17 20" DIA CAPTIVE-AIRE STAINLESS STEEL FACTORY BUILT GREASE DUCTWORK (SEE SPECIFICATIONS THIS SHEET H-1) WITH QTY (2) LAYERS OF FIRE-RATED WRAP.
- 18 18" X 20" SUPPLY DUCT TO HOODS HO1B & HO1C.
- 19 13" X 14" SUPPLY DUCT TO HOOD HO1C.
- 20 ALL LISTED TO SLOPE 1/4"=12" BACK TO THE HOOD OR EXHAUST FAN.

HOOD ETL LISTING

Model	Max. Temp.	Min. Eff. (CFM)	Max. Min. (CFM)	Length Range	Max. Len. for 1 Hood	Width Range	Width Max.	Side Overhang	Front Overhang	Vertical Clearance (min)	Vertical Clearance (max)
VHS-BMW	300°F	100	-	4'-4"	4'	36"-78"	1'	6"	6"	-	-
VH1	200°F	100	-	3'-6"	18"	36"-78"	1'	6"	6"	-	-
VH-D	200°F	100	-	3'-6"	18"	36"-78"	1'	6"	6"	-	-
VH-B	200°F	100	-	2'-6"	18"	24"-60"	1'	6"	6"	-	-

FOR KNO3 & KNO2

Model	Max. Temp.	Min. Eff. (CFM)	Max. Min. (CFM)	Length Range	Max. Len. for 1 Hood	Width Range	Width Max.	Side Overhang	Front Overhang	Vertical Clearance (min)	Vertical Clearance (max)
KNO-2 (HSR)	450°F	150	-	2'-6"	18"	36"-78"	1'	6"	6"	33"-48"	11'-5'-48"
KNO-3 (HSR)	600°F	200	-	3'-6"	18"	36"-78"	1'	6"	6"	33"-48"	11'-5'-48"

FOR KNO3 (DISH)

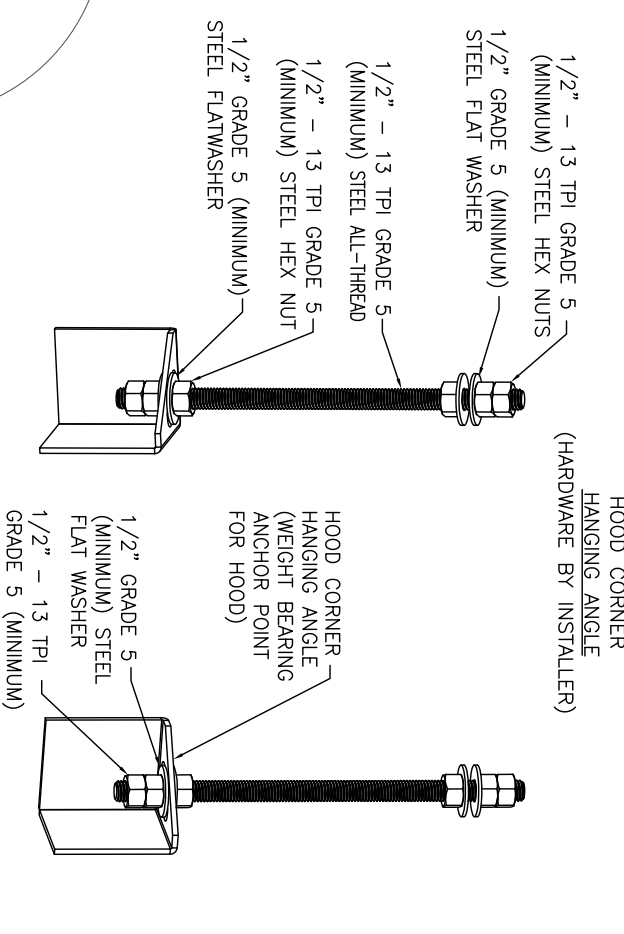
Model	Max. Temp.	Min. Eff. (CFM)	Max. Min. (CFM)	Length Range	Max. Len. for 1 Hood	Width Range	Width Max.	Side Overhang	Front Overhang	Vertical Clearance (min)	Vertical Clearance (max)
VH-SB-WV	300°F	100	-	4'-4"	4'	36"-78"	1'	6"	6"	-	-
VH1	200°F	100	-	3'-6"	18"	36"-78"	1'	6"	6"	-	-
VH-D	200°F	100	-	3'-6"	18"	36"-78"	1'	6"	6"	-	-
VH-B	200°F	100	-	2'-6"	18"	24"-60"	1'	6"	6"	-	-

AIR BALANCE SCHEDULE

TAG	ROOMS SERVED	OA CFM	EXHAUST CFM
KE1 (Grease HDS)	KHO1, HO1B, HO1C	-	6160
KE2 (DISH HO)	KITCHEN	+ 5981	-
KE2 (DISH HO)	HO-2	-	900
HVAC	ENTIRE BUILDING	+ 1091 (MIN)	-
NET		0 CFM	-

KITCHEN TO MAINTAIN A SLIGHTLY NEGATIVE PRESSURE OVERALL BUILDING PRESSURE TO MAINTAIN A SLIGHTLY POSITIVE PRESSURE TO THE MECH YARD PER IBC COMMENTARY RECOMMENDATIONS

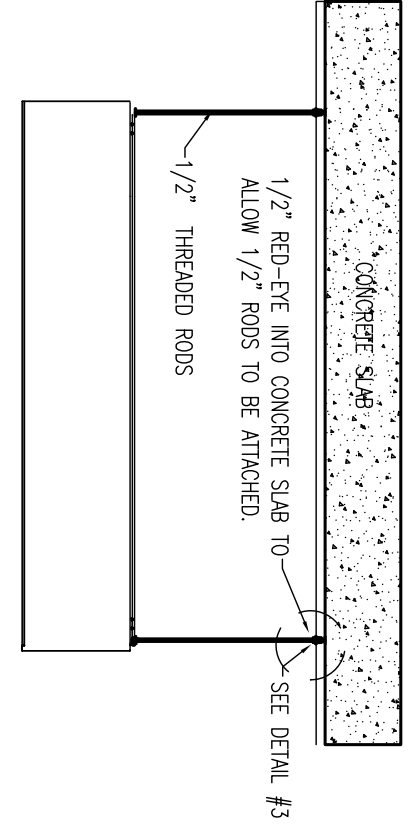
DETAIL #1: HOOD HANGING ASSEMBLY



ASSEMBLY INSTRUCTIONS

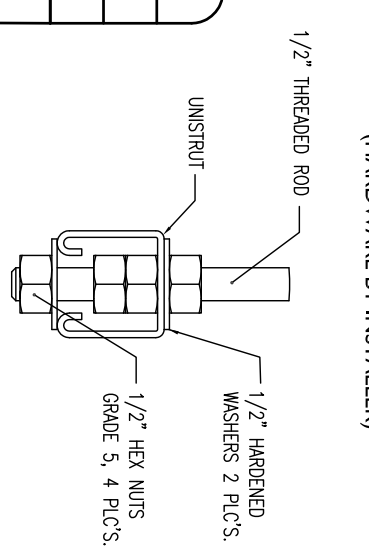
HANGING ANGLE MUST BE SUPPORTED WITH 1/2" - 13 TP GRADE 5 (MINIMUM) ALL-THREAD SANDWICH HANGING ANGLES AND CEILING ANCHOR POINTS WITH 1/2" GRADE 5 (MINIMUM) ALL-THREAD WASHERS AND 1/2" GRADE 5 (MINIMUM) ALL-THREAD HEX NUTS. LAST DOUBLE END NUT CONTOURATION BENEATH HOOD HANGING ANGLES AND ABOVE CEILING ANCHORS. MAINTAIN 1/4" OF EXPOSED THREADS BENEATH BOTTOM HEX NUT. TORQUE ALL HEX NUTS TO 57 FT.-LBS.

DETAIL #2: HOOD SUPPORT



HOOD	ROD LENGTH	NUMBER OF HANGING RODS
HO-1	11'-0"	4
HO-2	11'-0"	4
HO-3	11'-0"	4
HO-4	7'-5"	4

DETAIL #3: HANGING ROD TO UNISTRUT



MANAGED BY:
AIR SOLUTIONS, INC.
1329 E. KEMPER RD
CINCINNATI, OH 45246
PH: (513) 860-5555

MARQUEE
123-131 WEST COLUMBIA STREET
FORT WAYNE, INDIANA 46802
NEW COMMERCIAL HOOD IN KITCHEN

FISCHER ENGINEERING SERVICES, LLC
MECHANICAL DESIGN & CONSULTING SERVICES
3872 Nurgan Ct.
Columbus, Ohio 43002
Ph: 614-575-1559

SHEET NO: H-1

