

1 HVAC FLOOR PLAN  
M1.0  
1/4" = 1'-0"

**KEY NOTES**

- 1 REMOTE TEST STATION FOR SMOKE DETECTORS FOR RTU-1, 2 & 3. TEST STATION TO BE MOUNTED ON THE MANAGER'S OFFICE WALL. SECURITY CONTRACTOR SHALL WIRE RTU FACTORY MOUNTED SMOKE DETECTORS TO SECURITY/FIRE ALARM PANEL. MECHANICAL CONTRACTOR SHALL PROVIDE TEST STATION AND WIRING BETWEEN COMPONENTS AS WELL AS WIRING TO SHUT DOWN THE A/C FAN UPON ACTIVATION OF THE SMOKE DETECTOR. G.C. TO TEST THE SMOKE DETECTOR FUNCTIONS WITH THE WAWA PROJECT MANAGER.
- 2 TRANSFER AIR DUCT ASSEMBLY.
- 3 PROVIDE SEALED 20" X 20" PLENUM BOX ASSEMBLY ABOVE TRANSFER GRILLE TO ALLOW FLEX TRANSFER DUCT CONNECTIONS.
- 4 WALL MOUNTED SENSOR(S) FOR EACH MECHANICAL UNIT PER ROOFTOP UNIT SCHEDULE ON SHEET M3.0. G.C. SHALL INSTALL AND WIRE TO UNIT. BAS CONTRACTOR SHALL CONNECT TO MECHANICAL UNIT ONLY.
- 5 WALL MOUNTED CO2 SENSOR TO RTU-1. SENSOR TO MONITOR CO2 LEVELS THROUGH REMOTE BAS INTERFACE.
- 6 ROUTE DUCT THROUGH ANGLED WEB MEMBER AND SUPPORT AT PANEL POINT.
- 7 DUCTWORK TO RUN WITHIN JOIST SPACING. MECHANICAL CONTRACTOR TO COORDINATE MECHANICAL WORK WITH ALL TRADES PRIOR TO INSTALLATION.
- 8 ROUTE DUCT THRU OPEN WEBBING OF JOIST GIRDER.
- 9 CONNECT TO BOTTOM OF MAIN DUCT.
- 10 ROUTE DUCT UNDER STRUCTURAL MEMBER AT THIS LOCATION.
- 11 ROUTE SUPPLY DUCT DOWN THROUGH GYPSUM BOARD CEILING AND INTO CAVITY ABOVE FREEZER WITHIN 12" OF BACK WALL. SEAL AROUND DUCT AT PENETRATION AIR TIGHT AND TERMINATE DUCT WITH OPEN END.
- 12 HEATER SHALL BE A MINIMUM OF 12" AWAY FROM ANY WALL.
- 13 MOUNT CENTER OF EXHAUST GRILLE AT 12" ABOVE FINISHED FLOOR. ROUTE DUCT SIZED AS SHOWN FROM GRILLE, UP IN WALL CAVITY TO ABOVE CEILING, THEN TO EXHAUST FAN AND OUT TO EXTERIOR WALL LOUVER. COORDINATE DUCT ROUTING WITH ALL OTHER TRADES.
- 14 12"X8" EXTERIOR WALL, WIND DRIVEN RAIN LOUVER MODEL EHH-601 AS MANUFACTURED BY GREENHECK. INSTALL PER MANUFACTURER'S RECOMMENDED INSTALLATION INSTRUCTIONS. PROVIDE WITH BIRD SCREEN, 1-1/2" FLANGE, AND ALUMINUM MILL FINISH.
- 15 EMERGENCY SHUTOFF SWITCH AND WALL PLACARD INDICATING VENTILATION SYSTEM EMERGENCY SHUTOFF PROVIDED BY OTHERS. REFERENCE ELECTRICAL AND ARCHITECTURAL DRAWINGS.
- 16 INSTALL EXHAUST FAN PER DETAIL SHEET M3. FAN SHALL BE WIRED TO EMERGENCY SHUTOFF SWITCH PROVIDED BY OTHERS. REFERENCE ARCHITECTURAL AND ELECTRICAL DRAWINGS.
- 17 EXHAUST DUCT UP TO ROOF MOUNTED EXHAUST FAN. SEE ROOF PLAN FOR CONTINUATION.
- 18 RETURN DUCT PLENUM UP TO RTU SEE PLAN FOR SIZE.
- 19 SUPPLY DUCT PLENUM DOWN FROM RTU SEE PLAN FOR SIZE.
- 20 COORDINATE INSTALLATION OF MECHANICAL SENSORS IN URESTONE WALL WITH DETAIL ON ARCHITECTURAL PLANS.

**PERMITTING NOTE:**

ALL REFRIGERATION EQUIPMENT INCLUDING WALK-IN COOLERS AND REFRIGERATORS WILL BE SUBMITTED UNDER A SEPARATE PERMIT.

**SHEET GENERAL NOTE:**

1. MECHANICAL CONTRACTOR SHALL ADJUST ALL LINEAR SLOT DIFFUSERS TO A GENERALLY VERTICAL FLOW. ADJUSTMENT SHALL BE MADE SO AS TO AVOID AIRFLOWS ON SENSORS, REFRIGERATION CASES, OR OPEN FOOD REFRIGERATION EQUIPMENT.

2600 Midland Center Parkway  
Suite #200  
Wahaw, FL 32751  
P (407) 661-9100  
F (407) 661-9101  
c-p.com

**JOSE J. DIAZ-VELAZQUEZ**  
PROFESSIONAL ENGINEER



COPYRIGHT © All reports, plans, specifications, computer files, field data, notes and other documents are instruments of service prepared by Cubes & Pileon, C.A.P. as instruments of service remain the property of C.A.P. C.A.P. shall retain all common law, statutory and other reserved rights, including the copyright therein. Any use or reproduction of this document without written permission from C & P is a violation of Federal copyright laws.

CLIENT NAME  
**WAWA**  
260 W. BALTIMORE PIKE  
WAWA, PA 19063

PROJECT NAME  
W50FB V2021.1-MA  
STORE #8443  
SWC OF WAWA RT. 35 & BETHANY RD.,  
HAZZLET TWP., NJ

SHEET TITLE  
**HVAC FLOOR PLAN**

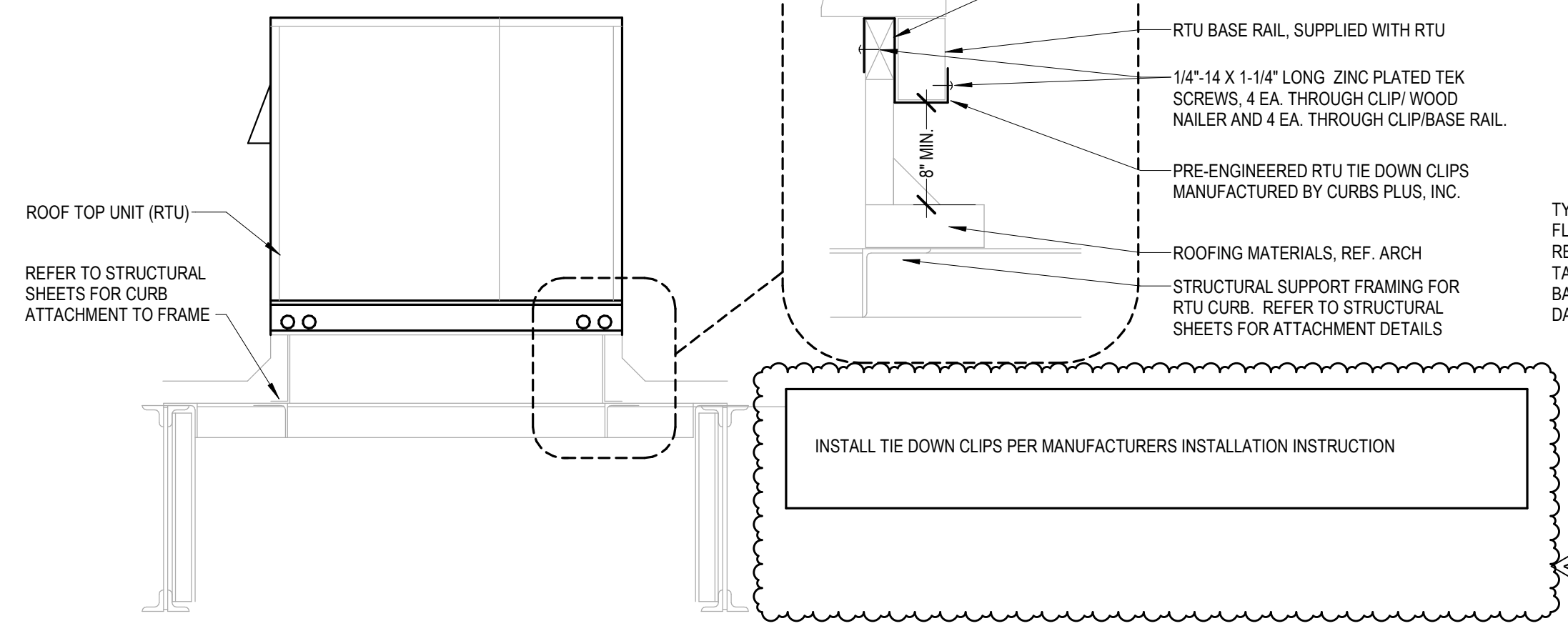
DATE  
04/06/2023

Revision Schedule	No.	Description	Date
PERMIT SET			11/10/2022
PRE-BID SET			11/14/2022
MECH. PLUMB & STR	A		03/02/2023
CONSTRUCTION SET			03/02/2023
CODE UPDATE	B		04/06/2023

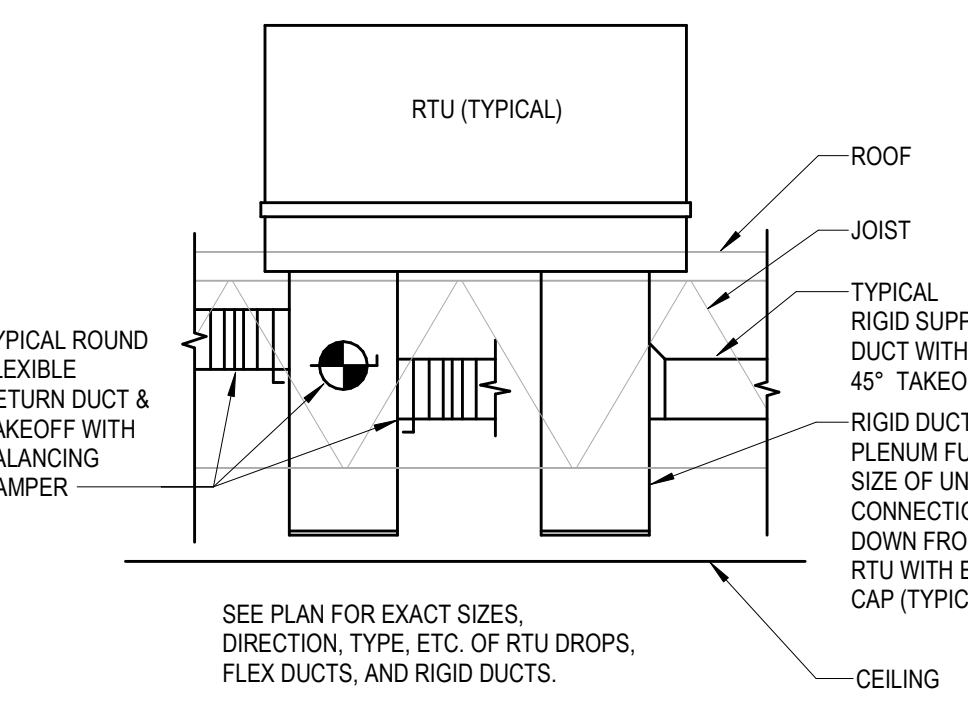
PROJECT NO. 2170816	DATE 11-10-2022	DRAWN JOF	CHECKED ESD
------------------------	--------------------	--------------	----------------

**M1.0**

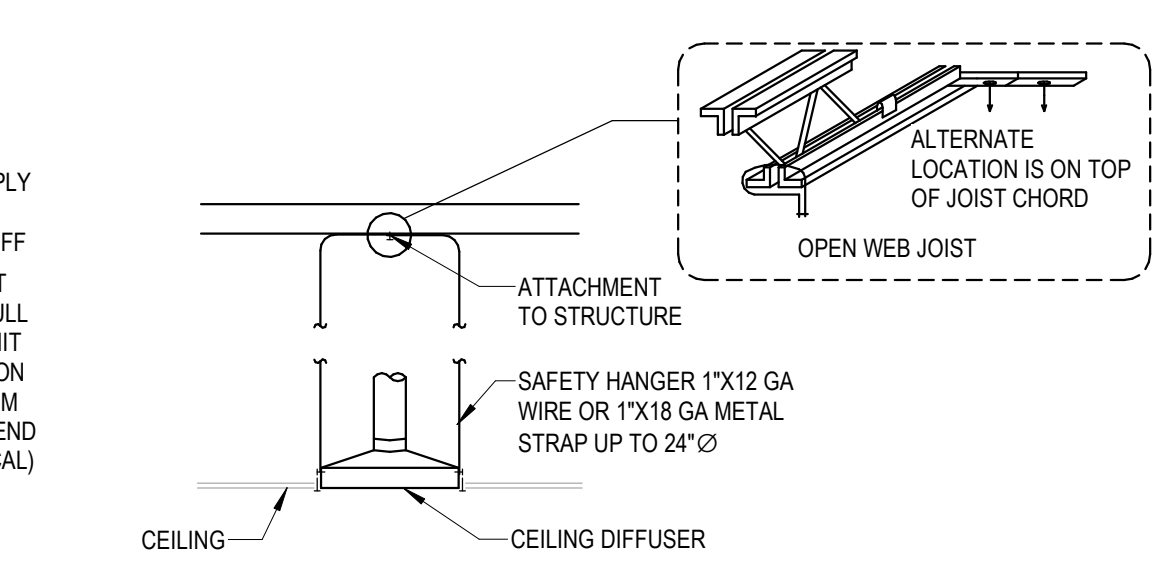
BUILDING LOCATION	WIND SPEED ZONE
HAZLET TWP. NJ.	(IBC FIGURE 1609A)
	115 MPH / IBC



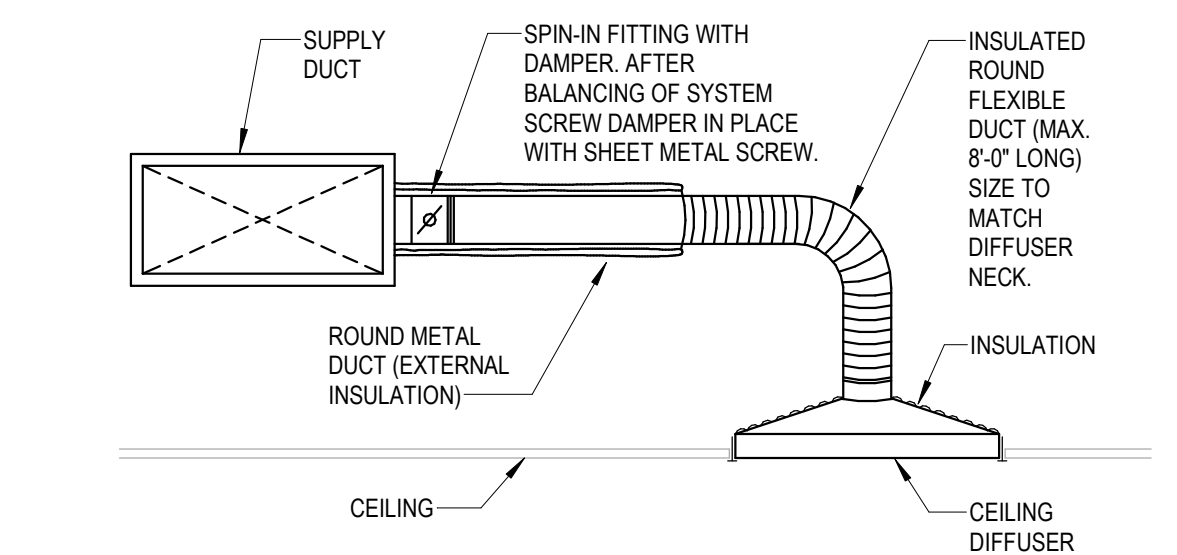
12 HVAC RTU TIE-DOWN DETAIL  
M2.0 NOT TO SCALE



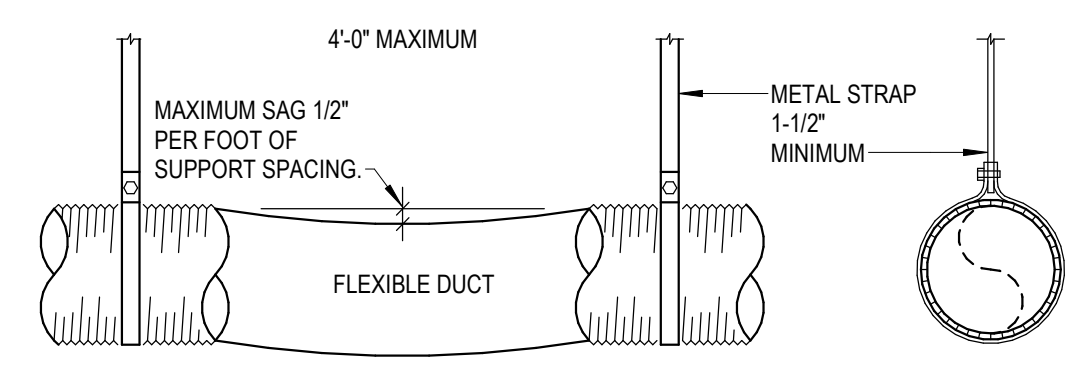
11 TYPICAL DUCT PLENUM DETAIL  
M2.0 NOT TO SCALE



10 HVAC CEILING MOUNTED AIR DIFFUSER SUPPORT DETAIL  
M2.0 NOT TO SCALE

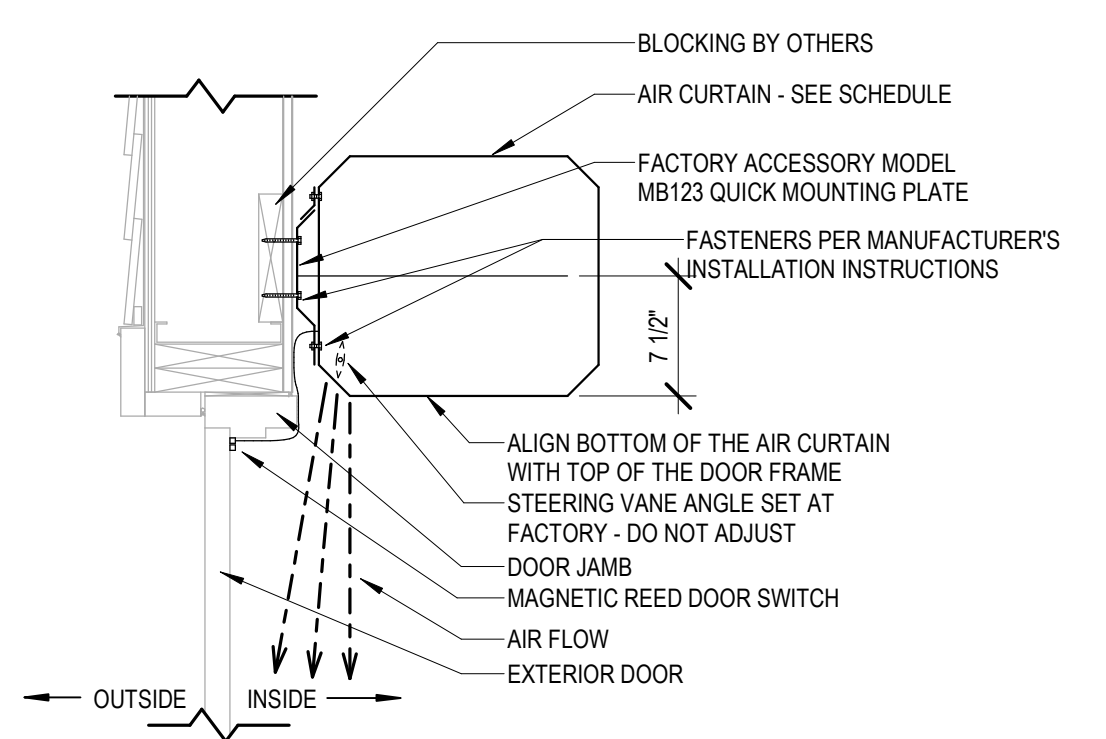


9 HVAC CEILING DIFFUSER RUNOUT DETAIL  
M2.0 NOT TO SCALE

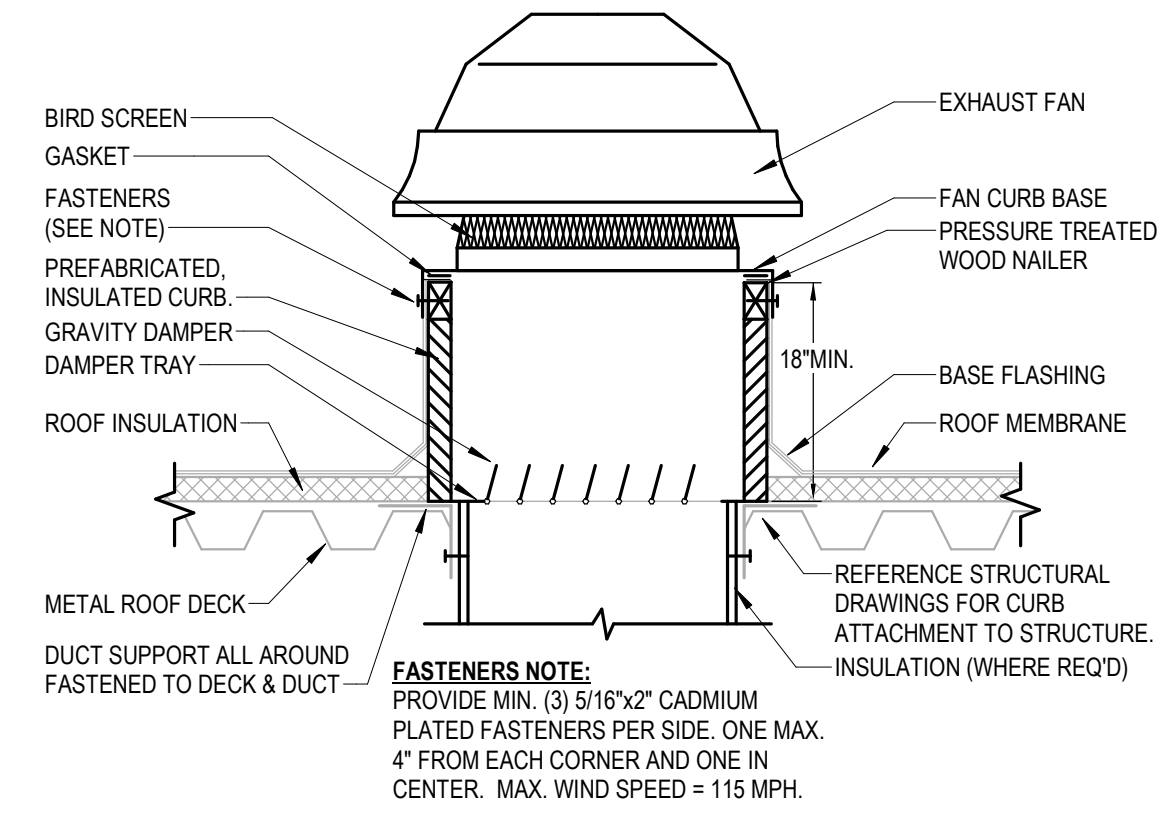


- NOTES:
- DUCT SHOULD EXTEND STRAIGHT FOR SEVERAL INCHES FROM A CONNECTION BEFORE BENDING.
  - SUPPORT SYSTEM MUST NOT DAMAGE DUCT OR CAUSE OVAL OF ROUND SHAPE.

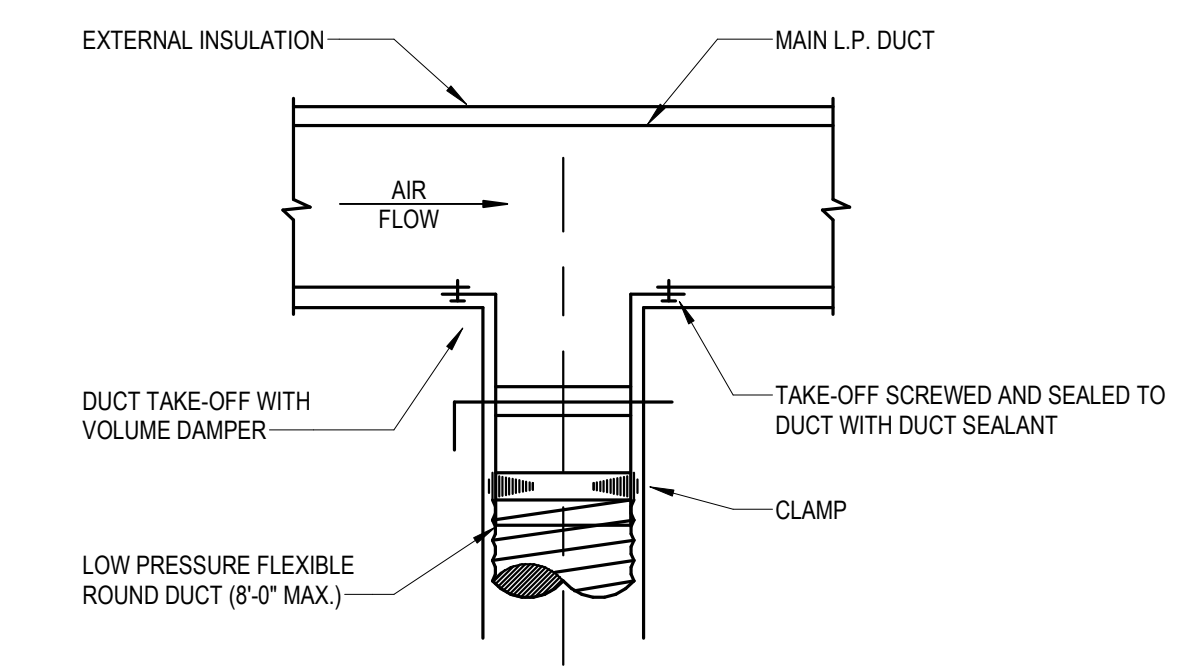
8 HVAC FLEX DUCT SUPPORT DETAIL  
M2.0 NOT TO SCALE



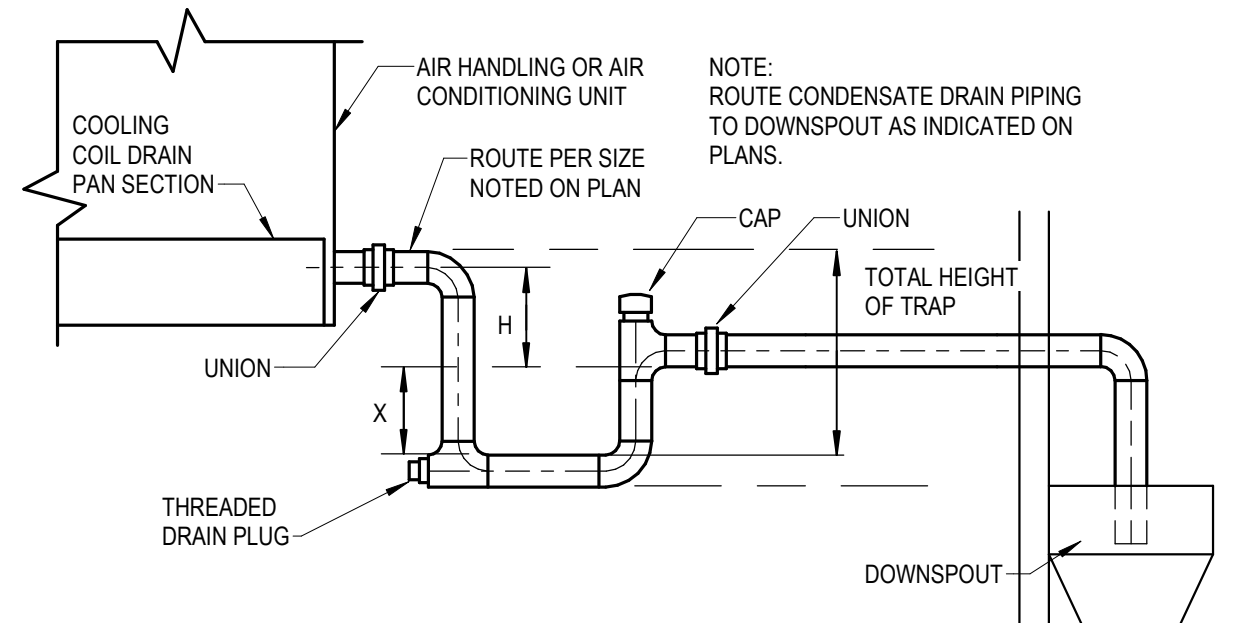
7 AIR CURTAIN INSTALLATION DETAIL  
M2.0 NOT TO SCALE



6 ROOF FAN MOUNTING DETAIL  
M2.0 NOT TO SCALE



5 HVAC SUPPLY DIFFUSER TAKE OFF DETAIL  
M2.0 NOT TO SCALE

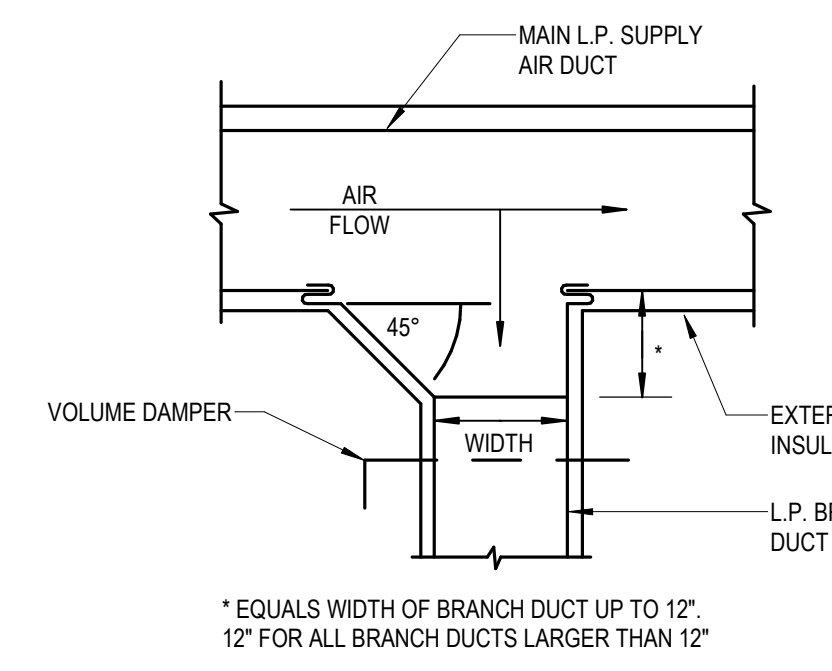


DRAIN TRAPPING HEIGHT		
FAN ARRANGEMENT	H	X
BLOW-THRU (POSITIVE STATIC PRESSURE)	A	B
DRAW-THRU (NEGATIVE STATIC PRESSURE)	D	C

A = MINIMUM 1"  
B = AT LEAST 1" PLUS CASING STATIC PRESSURE  
C = 1/2 "D"  
D = AT LEAST 1" PLUS CASING STATIC PRESSURE

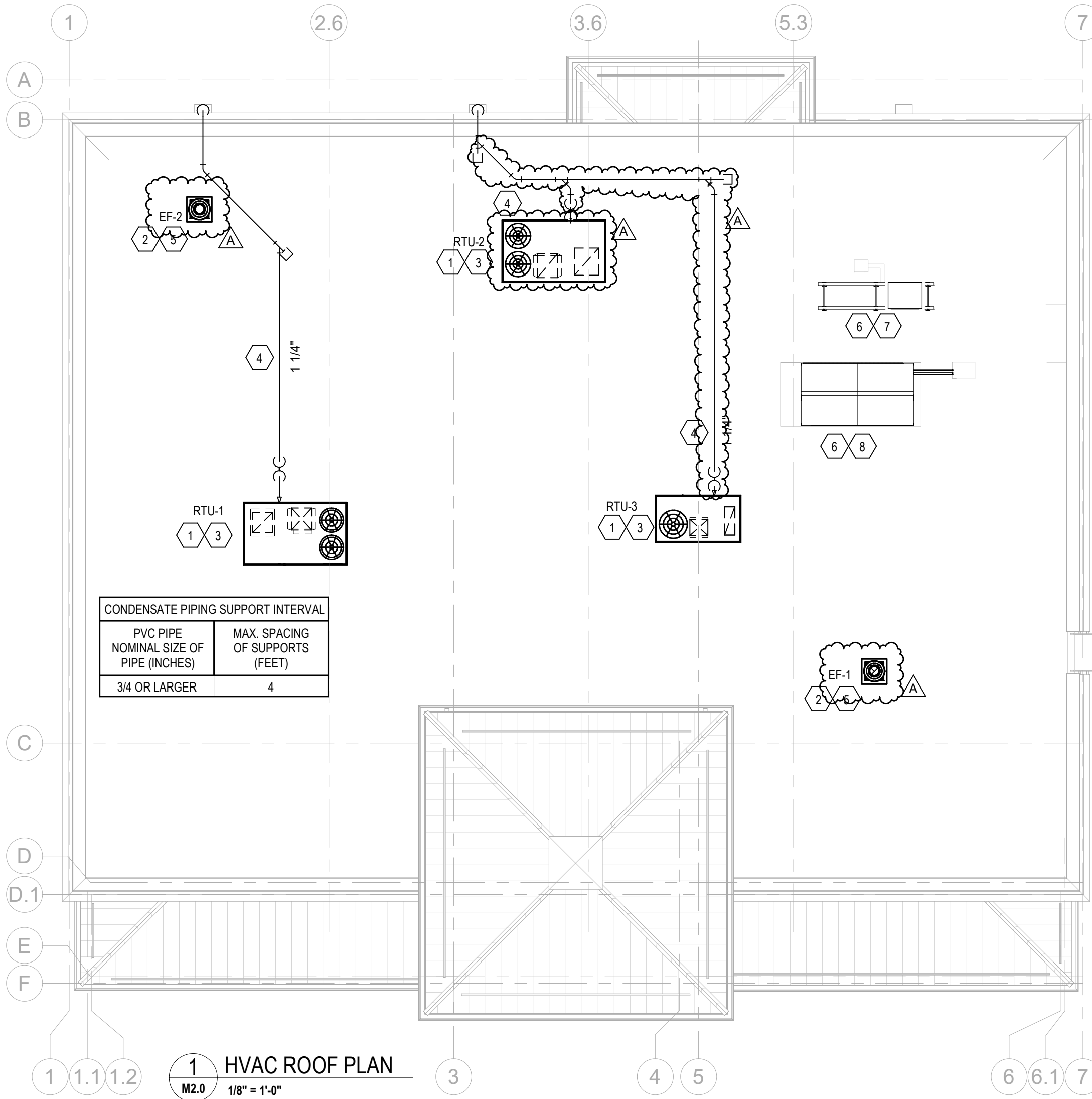
TOTAL HEIGHT OF TRAP = X + H + (1.5 x PIPE DIAMETER) (WITHOUT INSULATION)

4 HVAC CONDENSATE DRAIN DETAIL  
M2.0 NOT TO SCALE



3 HVAC LOW PRESSURE SUPPLY BRANCH DUCT DETAIL  
M2.0 NOT TO SCALE

- NOTES:
- GENERAL ARRANGEMENT SHOWN. INSTALL ALL FIRE DAMPERS IN STRICT ACCORDANCE WITH ALL INSTALLATION PROCEDURES REQUIRED BY THE UNDERWRITERS LABORATORY INC. AS FURNISHED BY DAMPER MFR.
  - WHERE FIRE DAMPER IS TO BE MOUNTED WITHIN EXISTING CEILING, WALL OR FLOOR, CUT OPENINGS AS REQUIRED TO MAINTAIN CLEARANCES STIPULATED BY THE MFR. BETWEEN WALL OR FLOOR AND SLEEVE.
  - GAUGE OF SHEETMETAL SLEEVE, MOUNTING ANGLES, METHODS OF ATTACHMENT, ETC. AS DIRECTED BY FIRE DAMPER MFR.



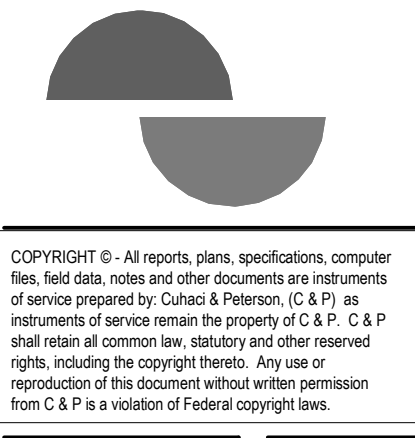
1 HVAC ROOF PLAN  
M2.0 1/8" = 1'-0"

SHEET NOTES

- FACTORY INSTALLED SMOKE DETECTOR IN MAIN SUPPLY AND RETURN OF EACH ROOF TOP UNIT.
- INSTALL ROOF MOUNTED EXHAUST FAN PER DETAIL ON SHEET M2.0. COORDINATE EXACT LOCATION OF FAN PENETRATION WITH ARCHITECTURAL ROOF PLAN. TRANSITION GALVANIZED DUCT WORK AS NECESSARY FROM FAN INTO CEILING/JOIST SPACE. SEE SHEET M1.0 FOR CONTINUATION.
- PROVIDE FLEXIBLE CONNECTIONS BETWEEN ALL DUCT WORK AND MECHANICAL UNITS.
- ROUTE SCH. 40 PVC CONDENSATE DRAIN PIPING ALONG ROOF. SUPPORT PIPING PER DETAIL ON SHEET M2.0.
- MAINTAIN A MINIMUM 10" CLEARANCE BETWEEN OUTSIDE AIR INTAKES AND EXHAUST TERMINATIONS ON ROOF.
- FOOD SERVICE REFRIGERATION EQUIPMENT PROVIDED BY OTHERS.
- FOOD SERVICE REFRIGERATION EQUIPMENT MOUNTED ON PRE-ENGINEERED RACK. SEE DETAIL ON SHEET A3.0.
- FOR SPECIFIC WIND LOADING REQUIREMENTS NOT TO EXCEED 115 MPH, SEE STRUCTURAL DRAWINGS.

2600 Waitland Center Parkway  
Suite #200  
Waitland, FL 32751  
P (407) 661-9100  
F (407) 661-9101  
c-p.com

JOSE J. DIAZ-VELAZQUEZ  
PROFESSIONAL ENGINEER



CLIENT NAME  
**WAWA**  
260 W. BALTIMORE PIKE  
WAWA, PA 19063

PROJECT NAME  
W50FB V2021.1-MA  
STORE #8443  
SWC OF WAWA RT. 35 & BETHANY RD.,  
HAZLET TWP., NJ

DATE  
04/06/2023

Revision Schedule	
No.	Description
1	PERMIT SET
2	MECH. PLUMB & STR
3	CONSTRUCTION SET
4	CODE UPDATE

PROJECT NO.	
DATE	CHECKED
2170816	ESD
11-10-2022	
DRAWN	JOF

M2.0

**MECHANICAL GENERAL NOTES**

- REFER TO WRITTEN BOOK SPECIFICATIONS FOR ADDITIONAL INFORMATION.
- THE WORK TO BE DONE UNDER THESE SPECIFICATIONS AND THE DRAWINGS CONSISTS OF FURNISHING ALL EQUIPMENT, MATERIALS, LABOR AND SERVICES, AND PERFORMING ALL OPERATIONS TO COMPLETE THE MECHANICAL CONSTRUCTION WORK FOR THIS PROJECT. ANY WORK NOT SPECIFICALLY COVERED BY THESE SPECIFICATIONS OR INDICATED ON THE MECHANICAL/ELECTRICAL/PLUMBING PLANS, BUT NECESSARY TO COMPLETE OR PERFECT ANY PART OF THIS INSTALLATION IN A SUBSTANTIAL MANNER, SHALL BE PROVIDED WITHOUT EXTRA COST TO OWNER.
- THE TERM "FURNISH" SHALL MEAN TO OBTAIN AND SUPPLY TO THE JOB SITE. THE TERM "INSTALL" SHALL MEAN TO FIX IN POSITION AND CONNECT FOR USE. THE TERM "PROVIDE" SHALL MEAN TO FURNISH AND INSTALL. THE TERM "MECHANICAL WORK" OR "WORK" SHALL MEAN ALL LABOR, MATERIAL, EQUIPMENT, SCAFFOLDING, RIGGING, TOOLS, SUPERVISION, SERVICES AND OTHER INCIDENTALS NECESSARY FOR COMPLETE AND OPERABLE INSTALLATION.
- THE CONTRACTOR SHALL FURNISH AND INSTALL ALL EQUIPMENT, MATERIALS AND LABOR TO PROVIDE A COMPLETE AND OPERATIONAL SYSTEM AS INDICATED ON THE DESIGN DOCUMENTS.
- CONTRACTOR SHALL OBTAIN ALL PERMITS, INSPECTIONS AND APPROVALS PRIOR TO AND DURING CONSTRUCTION.
- ALL MATERIALS, EQUIPMENT AND INSTALLATIONS SHALL BE IN STRICT ACCORDANCE WITH 2021 IBC - MECHANICAL, SMACNA, UL, STATE CODES, LOCAL CODES, MANUFACTURER'S RECOMMENDATIONS, AND ALL AUTHORITIES HAVING JURISDICTION.
- CONTRACTOR SHALL PROVIDE ALL ROOFING OPENINGS, FLASHINGS, AUXILIARY STEEL, THREADED RODS, VIBRATION ISOLATORS, TURNBUCKLES, ETC. TO SUPPORT HIS EQUIPMENT ON OR FROM THE STRUCTURE.
- CONTRACTOR SHALL COORDINATE ALL WORK WITH OTHER TRADES AND IN FIELD PRIOR TO INSTALLATION OF ANY WORK. REPORT ALL CONFLICTS IMMEDIATELY TO ARCHITECT AND ENGINEER.
- THE DRAWINGS INDICATE DIAGRAMMATICALLY THE EXTENT, GENERAL CHARACTER AND LOCATION OF THE WORK INCLUDED. OFFSETS OR CHANGES IN DUCT SHAPE TO AVOID STRUCTURAL OR OTHER INTERFERENCES, AND WORK INDICATED BUT HAVING MINOR DETAILS OBVIOUSLY OMITTED SHALL BE PROVIDED WITHOUT EXTRA COST.
- ANY CHANGES AND/OR MODIFICATIONS MUST BE REVIEWED AND APPROVED BY THE ENGINEER OR OWNER'S REPRESENTATIVE PRIOR TO CONSTRUCTION.
- REMOVE ALL TRASH, DEBRIS AND DEMOLITION MATERIAL FROM PREMISES AT THE END OF EACH WORK DAY.
- SCHEDULE ALL WORK, CUTTING AND BUILDING SERVICE INTERRUPTIONS WITH BUILDING OWNER AND CONSTRUCTION MANAGER, PRIOR TO COMPLETING WORK.
- ALL DUCT DIMENSIONS ARE INSIDE CLEAR DIMENSIONS.
- THE MAXIMUM FLEXIBLE DUCT LENGTH PERMITTED IS 8'-0". THIS DUCTWORK SHALL BE INSTALLED WITHOUT KINKS OR 90° BENDS.
- ALL FLEXIBLE DUCTWORK SHALL BE FLEX-VENT TYPE KM INSULATED WITH POLYMER INNER FILM AND METALIZED OUTER JACKET, OR APPROVED EQUAL. SIZE SHALL BE SAME AS DIFFUSER NECK SIZE, UNLESS INDICATED OTHERWISE.
- FIELD ADJUST THE DIRECTION OF BLOW FOR ALL SUPPLY AIR DEVICES SO THAT THE DEVICES DO NOT BLOW DIRECTLY INTO SOFFITS, CURTAIN WALLS, REFRIGERATED CASES OR EXHAUST HOODS.
- ALL NEW AND EXISTING PIPES AND DUCTS SHALL HAVE UL FIRE RATED SLEEVES AND/OR FIRE RATED SPRINKLERS, WHEN PASSING THROUGH FIRE RATED CONSTRUCTION.
- COORDINATE LOCATION OF NEW DUCTWORK, AIR DEVICES AND EQUIPMENT WITH LIGHT FIXTURES, DRINKER PIPING AND HYDRONIC PIPING.
- CONTRACTOR SHALL VERIFY FIELD CONDITIONS AT THE SITE AND NOTIFY THE OWNER/ENGINEER OF ANY DISCREPANCIES PRIOR TO COMMENCING WITH WORK.
- ALL WALL MOUNTED TEMPERATURE, HUMIDITY, AND CO2 SENSORS SHALL BE INSTALLED AT AN ELEVATION 5' ABOVE FINISHED FLOOR TO THE TOP UNLESS OTHERWISE NOTED ON DRAWINGS. COORDINATE FINAL LOCATIONS WITH EQUIPMENT, FURNITURE, TENANT AND ARCHITECT PRIOR TO INSTALLATION.
- ALL DUCTWORK SHALL BE GALVANIZED STEEL CONSTRUCTED AT 2" PRESSURE CLASS. ALL CONCEALED DUCTWORK BELOW TRUSSES SHALL BE INSULATED WITH 1-1/2" FIBERGLASS DUCT WRAP WITH WIRE SUPPORT BANDS ON 24" CENTERS. ALL CONCEALED DUCTWORK ABOVE THE TRUSSES SHALL BE INSULATED WITH 1-1/2" OF FIBERGLASS DUCT WRAP WITH WIRE SUPPORT BANDS ON 24" CENTERS. ALL INTERIOR EXPOSED DUCTWORK BELOW TRUSSES SHALL BE INSULATED WITH 1" RIGID FIBERGLASS DUCT BOARD WITH FOIL AND SCRIM FACING. ALL EXTERIOR EXPOSED DUCTWORK SHALL BE INSULATED WITH 4" RIGID FIBERGLASS BOARD WITH WEATHERPROOF MEMBRANE.
- VERIFY ALL EQUIPMENT VOLTAGES, WIRING REQUIREMENTS, AND REQUIRED BREAKER SIZES WITH THE ELECTRICAL CONTRACTOR PRIOR TO ORDERING EQUIPMENT.
- ALL ACCESS DOORS REQUIRED IN GENERAL CONSTRUCTION ARE TO BE PROVIDED AND INSTALLED BY THE GENERAL CONTRACTOR. IT IS THE RESPONSIBILITY OF THE MECHANICAL CONTRACTOR TO IDENTIFY SIZE, TYPE AND LOCATION OF SUCH DOORS FOR PROPER ACCESS TO ALL CONCEALED MECHANICAL EQUIPMENT, VALVES AND OTHER RELATED DEVICES. THE MECHANICAL CONTRACTOR SHALL IDENTIFY THESE REQUIREMENTS ON A COORDINATED SHOP DRAWING PRIOR TO SYSTEM FABRICATION AND INSTALLATION.
- AFTER THE HEATING AND AIR CONDITIONING SYSTEM INSTALLATIONS ARE COMPLETE, THE CONTRACTOR SHALL BALANCE THE SYSTEM AND PRESENT OWNER & ARCHITECT WITH A WRITTEN BALANCING REPORT BY A CERTIFIED INDEPENDENT TESTING LAB. DAMPER HANDLES SHALL BE FASTENED INTO DUCTWORK WITH SHEETMETAL SCREWS AFTER BALANCING TO ASSURE CORRECT BALANCED AIRFLOW.
- PROVIDE ELBOWS OR TEES WITH TURNING VANES FOR ALL CHANGES IN SUPPLY DUCT DIRECTION. PROVIDE BRANCH DUCT DAMPERS WITH LOCKING QUADRANTS FOR ALL BRANCHES AND TAKE-OFFS. PROVIDE RAISED QUADRANTS FOR INSULATED DUCTWORK. ALL VOLUME DAMPER HANDLES ARE TO PROTRUDE NEATLY THROUGH DUCT INSULATION AND BE TAGGED SO THAT THEY ARE CLEARLY VISIBLE.
- PROVIDE FLEXIBLE CONNECTIONS AT ALL DUCT CONNECTIONS TO VIBRATING EQUIPMENT. THESE CONNECTIONS SHALL BE INSTALLED IN CLOSE PROXIMITY TO SUCH EQUIPMENT.
- THE MECHANICAL CONTRACTOR SHALL HAVE A QUALIFIED HVAC TECHNICIAN FROM THE UNIT MANUFACTURER PROVIDE AN EQUIPMENT OPERATION CHECK AFTER UNIT START-UP AND PRIOR TO CERTIFIED AIR BALANCING. THE CERTIFICATION, SIGNED BY THE TECHNICIAN, MUST BE INCLUDED IN THE GENERAL CONTRACTOR CLOSING DOCUMENTS FOR THE STORE.
- PROVIDE CONDENSATE DRAIN PIPING SIZED PER PLAN. PROVIDE TRAP FOR EACH ROOFTOP UNIT PER DETAIL ON PLANS. PIPE DRAIN TO GUTTER OR DOWNSPOUT PER PLAN.

HVAC LEGEND	
SYMBOL	DESCRIPTION
	NEW RECTANGULAR OR ROUND DUCT
	FLEXIBLE DUCT
	SUPPLY AIR DUCTWORK UP THROUGH PLAN
	RETURN AIR DUCTWORK UP THROUGH PLAN
	EXHAUST AIR DUCTWORK UP THROUGH PLAN
	90° ELBOW WITH TURNING VANES
	MANUAL AIR VOLUME CONTROL DAMPER
	4 WAY SUPPLY DIFFUSER
	3 WAY SUPPLY DIFFUSER
	2 WAY OPPOSED SUPPLY DIFFUSER
	2 WAY CORNER SUPPLY DIFFUSER
	RETURN AIR DEVICE
	EXHAUST AIR DEVICE
	VAV PLAQUE FACE DIFFUSER
	AIR CURTAIN
	LINEAR SLOT DIFFUSER WITH PLENUM
	TEMPERATURE SENSOR
	COMBINATION TEMPERATURE/HUMIDITY SENSOR
	CO2 SENSOR
	TYPE MARK CFM
	MECHANICAL EQUIPMENT TAG
	CONDENSATE PIPING
	ROOF MOUNTED EXHAUST FAN
	INLINE EXHAUST FAN
	PACKAGED ROOFTOP AIR CONDITIONER

ABBREVIATIONS			
DB°F	DRY BULB DEGREES FAHRENHEIT	LD	LINEAR DIFFUSER
AC	AIR CURTAINING	L.P.	LOW PRESSURE
AC	AIR CURTAIN	MAX	MAXIMUM
A.F.F.	ABOVE FINISHED FLOOR	MBH	1000 BTU PER HOUR
BAS	BUILDING AUTOMATION SYSTEM	MCA	MINIMUM CIRCUIT AMPACITY
BTU	BRITISH THERMAL UNIT	MEN	MINIMUM
CD	CEILING DIFFUSER	MOCOP	MAXIMUM OVER CURRENT PROTECTION
CFM	CUBIC FEET PER MINUTE	MPH	MILES PER HOUR
CO2	CARBON DIOXIDE	O.A.	OUTSIDE AIR
D	DIAMETER	O.C.	ON CENTER
EER	ENERGY EFFICIENCY RATIO	PVC	POLYVINYL CHLORIDE
EF	EXHAUST FAN	REQD	REQUIRED
FFH	FAN FORCED HEATER	RTU	PACKAGED ROOF TOP HVAC UNIT
G	GRILLE	SCH	SCHEDULE
G.C.	GENERAL CONTRACTOR	SEER	SEASONAL ENERGY EFFICIENCY RATIO
GFCI	GROUND FAULT CIRCUIT INTERRUPTER	SF	SQUARE FOOT
HP	HORSEPOWER	TYP.	TYPICAL
IEER	INTEGRATED ENERGY EFFICIENCY RATIO	V	VOLTS
IN	INCHES WATER COLUMN	W	WITH
LBS.	POUNDS	WB°F	WET BULB DEGREES FAHRENHEIT

OUTSIDE AIR CALCULATION									
AREA SERVED	AREA (SQFT)	PEOPLE / 1000 SQFT	# PEOPLE	CFM / PERSON	PEOPLE O.A. REQD (CFM)	CFM / SQFT	SQFT OUTSIDE AIR (CFM)	TOTAL CFM CALCULATED	CFM SUPPLIED
OFFICE	63	5	2	5	10	0.06	4	14	
RETAIL	1396	15	21	7.5	158	0.12	168	326	
ASSOCIATES	77	5	2	5	10	0.06	5	15	
COFFEE	144	20	3	7.5	23	0.12	18	41	
RTU-1								396	525
STAGING	43	2	1	10	10	0.12	6	16	
WASHROOM	73	20	2	7.5	15	0.12	9	24	
BACKROOM	268	20	6	7.5	45	0.12	33	78	
FOOD SVC.	478	20	10	7.5	75	0.12	58	133	
RTU-2								251	675
RETAIL	1088	15	17	7.5	128	0.12	131	259	
DELIVERY	118	2	1	10	10	0.12	15	25	
HALLWAY	89	-	-	-	-	0.06	6	6	
RTU-3								290	300

NOTES:  
 1. OCCUPANCY LOAD CALCULATION RATES ARE BASED ON NET OCCUPIABLE SPACE IN ACCORDANCE WITH THE 2021 INTERNATIONAL MECHANICAL CODE TABLE 403.1.1.3  
 2. ANTICIPATED NUMBER OF PEOPLE BASED ON OCCUPANCY LOAD FACTOR (# PEOPLE/SF) VALUE (BASED ON THE 2021 INTERNATIONAL MECHANICAL CODE TABLE 403.1.1.1A)

AIR BALANCE SCHEDULE	
SYSTEM	CFM
RTU-1	-525
RTU-2	+675
RTU-3	-300
EF-1	-300
EF-2	-900
BUILDING POSITIVE PRESSURE	+300

HVAC AIR DEVICE SCHEDULE									
TYPE MARK	MANUFACTURER	MODEL	SERVICE	DESCRIPTION	MOUNTING TYPE	MATERIAL	NECK SIZE	FACE SIZE	NOTES
CD-1	PRICE	AMD	SUPPLY	LOUVERED FACE DIRECTIONAL DIFFUSER	LAY-IN	ALUMINUM	18"X18"	24"X24"	1.6
CD-2	PRICE	AMD	SUPPLY	LOUVERED FACE DIRECTIONAL DIFFUSER	SURFACE	ALUMINUM	12"X12"	NECK-5"	5.6
CD-3	PRICE	AMD	SUPPLY	LOUVERED FACE DIRECTIONAL DIFFUSER	SURFACE	ALUMINUM	6"X6"	NECK-5"	5.6
G-1	PRICE	630FF	RET/EXH/TRAN	LOUVERED FACE FILTER RETURN GRILLE	LAY-IN	ALUMINUM	20"X20"	NECK-3/3/4"	4
G-2	PRICE	630FF	RETURN/TRANSFER	LOUVERED FACE FILTER RETURN GRILLE	SURFACE	ALUMINUM	12"X12"	NECK-3/3/4"	4
G-3	PRICE	630FF	EXHAUST	LOUVERED FACE FILTER RETURN GRILLE	SURFACE	ALUMINUM	8"X8"	NECK-3/3/4"	4
G-4	PRICE	630 D	EXHAUST	LOUVERED FACE RETURN GRILLE	SURFACE/WALL	ALUMINUM	10"X10"	NECK-1/3/4"	-
LD-1	PRICE	TBD04	SUPPLY	48" INSULATED PLENUM W/ (4) 1" SLOTS	LAY-IN	ALUMINUM	SEE PLAN	NA	2.3

NOTES:  
 -NO SUBSTITUTIONS PERMITTED--  
 1. FOR LAY-IN CEILINGS PROVIDE WITH 18"X18" FULL FACE APPEARANCE DIFFUSER NECK. PROVIDE WITH FACTORY SQUARE TO ROUND NECK ADAPTER MODEL "SR". ROUND NECK SIZE SHALL BE EQUAL TO FLEX SIZE SERVING DIFFUSER.  
 2. PROVIDE WITH PLENUM INTERNALLY LINED WITH COATED FIBERBOARD. EXTERNALLY INSULATE PLENUM UPON INSTALLATION WITH DUCT WRAP INSULATION.  
 3. PROVIDE WITH CENTER NOTCH OPTION (CN) AS REQUIRED WHEN USED IN 24" T-BAR CEILING.  
 4. "GR" STYLE (1/4" TURN FASTENERS ONLY) - OMIT HINGE. FILTER TYPE RETURN GRILLES PROVIDED SOLELY FOR MAINTENANCE PURPOSES. OMIT FILTER UPON INSTALLATION.  
 5. PROVIDE WITH TYPE 6 BEVELED SURFACE MOUNT FRAME AND FACTORY SQUARE TO ROUND NECK ADAPTER MODEL "SR".  
 6. PROVIDE WITH BACKPAN INSULATION.

HVAC AIR CURTAIN SCHEDULE									
MARK	AREA SERVED	BASIS OF DESIGN			UNIT POWER		MOUNTING HEIGHT	NOTES	
		MANUFACTURER	MODEL	NOZZLE CFM	HP	VOLTAGE			PHASE
AC-1	WASHROOM	POWERED AIRE	BCE-142	2163	0.5	120 V	1	7'-2"	1-4
AC-2	DELIVERY ROOM	POWERED AIRE	BCE-148	2155	0.5	120 V	1	7'-2"	1-4

NOTES:  
 -NO SUBSTITUTIONS PERMITTED--  
 1. MOUNT INSIDE BUILDING ABOVE DOOR AT 7'-2" A.F.F. MOUNTING HEIGHT IS FROM BOTTOM OF AIR CURTAIN.  
 2. PROVIDE ALL NECESSARY MOUNTING BRACKETS AND ACCESSORIES.  
 3. PROVIDE WITH MODEL SM-300 COMMERCIAL MAGNETIC REED DOOR SWITCH.  
 4. AIR CURTAIN CONTROLLED BY MAGNETIC REED DOOR SWITCH. FAN ON WHEN DOOR IS OPEN.

HVAC EXHAUST FAN SCHEDULE											
MARK	CFM	EXTERNAL STATIC PRESSURE	FAN TYPE	DRIVE TYPE	BASIS OF DESIGN			NOTES			
					SONES	HP	FAN RPM				
EF-1	300	0.00 in-wg	DOWNBLAST	DIRECT	6.5	1/12	1550	120 V	1	PENNBARRY DX10R	1-2
EF-2	900	0.00 in-wg	DOWNBLAST	DIRECT	14	1/4	1725	120 V	1	PENNBARRY DX13Q	1-2
EF-3	60	0.13 in-wg	INLINE	DIRECT	4.1	39 WATTS	1550	120 V	1	PENNBARRY 23H	1-2

NOTES:  
 -NO SUBSTITUTIONS PERMITTED--  
 1. PROVIDE WITH FACTORY DISCONNECT, FACTORY WIRED SOLID STATE SPEED CONTROLLER. 18" HIGH ROOF CURB WITH DAMPER TRAY, BACKDRAFT DAMPER, AND BIRD SCREEN.  
 2. WIRE FOR CONTINUOUS OPERATION.  
 3. PROVIDE WITH FACTORY DISCONNECT & FACTORY WIRED SOLID STATE SPEED CONTROLLER. FAN SHALL BE WIRED TO EMERGENCY SHUTOFF SWITCH PROVIDED BY OTHERS. REFERENCE ARCHITECTURAL AND ELECTRICAL DRAWINGS.

HVAC ROOF TOP UNIT SCHEDULE																							
MARK	AREA SERVED	NOMINAL TONS	SUPPLY AIR FAN DATA				GAS HEAT			UNIT POWER		WEIGHT (LBS. RTU ONLY)	COOLING CAPACITY			EER (IEER) (SEER)	BASIS OF DESIGN		NOTES				
			HEATING/COOLING CFM	OUTSIDE AIR (CFM)	E.S.P. (IN.)	HP	INPUT MBH	OUTPUT MBH	CONTROL STAGES	VOLTAGE	PHASE		MCA	MOCOP	TOTAL COOLING MBH		SENSIBLE COOLING MBH	EDB (°F)		EWB (°F)	AMBIENT (DB°/WB°/M°)	MANUFACTURER & PRODUCT LINE	MODEL
RTU-1	RETAIL	8.5	3400	525	0.5	3.75	130	104	2	208 V	3	47	50	1409	98.3	75.4	75.4	64.2	92/75	12.1 [15.7]	LENNOX ENLIGHT	LGT102H4E	1-20
RTU-2	FOOD SERVICE	10.0	4000	675	0.5	3.75	N/A	N/A	N/A	208 V	3	54	60	1396	117	91.1	75.2	62.5	92/75	12.2 [15.9]	LENNOX ENLIGHT	LCT120H4E	2-20
RTU-3	RETAIL	5.0	2000	300	0.5	1	65	53	2	208 V	3	31	40	903	58.1	46.8	76.5	63.8	92/75	12.8 [17.1]	LENNOX ENLIGHT	LGT060H4E	2-20

NOTES:  
 1. PROVIDE CO2 SENSOR FOR INTERLINK WITH BUILDING AUTOMATION SYSTEM.  
 2. PROVIDE LENNOX HUMIDITROL HOT GAS REHEAT OPTION.  
 3. PROVIDE REMOTE WALL MOUNTED COMBINATION TEMPERATURE/HUMIDITY SENSOR MODEL 21W06  
 4. REFER TO CONTROL SYSTEM NOTES FOR CONTROL COMPONENTS REQUIREMENTS.  
 5. PROVIDE 5-MINUTE ANTI-SHORT CYCLE TIMER.  
 6. PROVIDE THRU THE BASE ELECTRICAL AND SINGLE POINT CONNECTION.  
 7. PROVIDE WITH FACTORY 2" THROW AWARD PLEATED MERV 8 FILTERS.  
 8. PROVIDE WITH 18" ROOF CURB.  
 9. PROVIDE FACTORY 15 AMP GFCI SERVICE OUTLET WITH WEATHERPROOF COVER. COORDINATE WITH ELECTRICAL CONTRACTOR TO PROVIDE FIELD WIRING TO RECEPTACLE.  
 10. PROVIDE WITH FACTORY INSTALLED DISCONNECT.  
 11. PROVIDE WITH HIGH PERFORMANCE SINGLE ENTHALPY ECONOMIZER AND UNIT MOUNTED POWERED EXHAUST FAN.  
 12. PROVIDE MANUFACTURER'S MOTOR AND DRIVE PACKAGE AS REQUIRED TO MEET SCHEDULED AIR CAPACITIES AND PRESSURE DROP.  
 13. PROVIDE FACTORY APPLIED PHENOLIC COATING FOR CORROSION PROTECTION ON CONDENSER COILS WITHIN 5 MILES OF SALT WATER.  
 14. PROVIDE BUILDING AUTOMATION SYSTEM (BAS) EQUIPMENT - REFER TO BAS SYSTEM MASTER SPEC FOR SYSTEM DETAILS AND EQUIPMENT PART NUMBERS.  
 15. PROVIDE FACTORY INSTALLED BACKPAN BAS INTERFACE.  
 16. PROVIDE LENNOX DIRTY FILTER SWITCH.  
 17. PROVIDE LENNOX IMC CONTROL BOARD (STANDARD ON L-SERIES UNITS)  
 18. TEMPERATURE SETPOINT: 74°F COOLING, 68°F HEATING HUMIDITY SETPOINT: 50% RELATIVE HUMIDITY  
 19. PROVIDE WITH FACTORY CONDENSATE PAN WATER LEVEL MONITORING DEVICE FOR COMPLIANCE WITH 2021 IMC SECTION 307.2.3.  
 20. PROVIDE WITH FACTORY INSTALLED SUPPLY AND RETURN SMOKE DETECTORS.

- RTU-1, 2, & 3 SEQUENCE OF OPERATION**
- SUPPLY AIR BLOWER SPEED  
 UNIT HAS FOLLOWING SUPPLY AIR BLOWER SPEED SETTINGS THAT PERTAIN TO THIS INSTALLATION:
- COOLING AIR BLOWER SPEED
  - HEATING AIR BLOWER SPEED
- COOLING MODE
- Y1 DEMAND: COMPRESSOR 1 OPERATES AND SUPPLY AIR BLOWER OPERATES AT COOLING SPEED.
  - Y2 DEMAND: ALL COMPRESSORS OPERATE AND SUPPLY AIR BLOWER OPERATES AT COOLING SPEED.
- DEHUMIDIFICATION MODE
- IF THE UNIT RECEIVES A CALL FOR DEHUMIDIFICATION, ECONOMIZER FREE COOLING IS LOCKED OUT (ON UNITS EQUIPPED WITH ECONOMIZER), CALL FOR DEHUMIDIFICATION, NO Y1, Y2 DEMAND: 1ST STAGE COMPRESSOR OPERATES, SUPPLY AIR BLOWER OPERATES AT COOLING SPEED, AND THE REHEAT VALVE IS ENERGIZED.
  - Y1 DEMAND WITH A CALL FOR DEHUMIDIFICATION: ALL COMPRESSORS OPERATE, SUPPLY AIR BLOWER OPERATES AT COOLING SPEED AND THE REHEAT VALVE IS ENERGIZED.
  - Y2 DEMAND WITH A CALL FOR DEHUMIDIFICATION: ALL COMPRESSORS OPERATE, SUPPLY AIR BLOWER OPERATES AT COOLING SPEED, AND THE REHEAT VALVE IS DE-ENERGIZED.
- HEATING MODE (GAS HEAT)
- W1 DEMAND: 1ST STAGE GAS HEAT IS ENERGIZED AND THE SUPPLY AIR BLOWER OPERATES AT HEATING SPEED.
  - W2 DEMAND: 2ND STAGE GAS HEAT IS ENERGIZED AND THE SUPPLY AIR BLOWER OPERATES AT HEATING SPEED.
- MODULATING OUTDOOR AIR DAMPER
- THE MINIMUM DAMPER POSITION FOR "OCCUPIED HIGH BLOWER" IS ADJUSTED DURING UNIT SETUP TO PROVIDE MINIMUM FRESH AIR REQUIREMENTS PER RTU SCHEDULE
  - WHEN SUPPLY AIR BLOWER IS OFF, THE OUTDOOR AIR DAMPER IS CLOSED.
  - WHEN UNIT IS IN OCCUPIED MODE AND SUPPLY AIR BLOWER IS OPERATING, THE OUTDOOR AIR DAMPER IS AT MINIMUM "HIGHER BLOWER" POSITION.

- RTU-1, 2, & 3 TEST AND BALANCE NOTES**
- TEST AND BALANCE CONTRACTOR TO OBTAIN INITIAL BALANCE OF COOLING CFM FOR RTU USING FAN SHEAVE ADJUSTMENT TO WITHIN +/- 5% SCHEDULED COOLING CFM. PRODIGY CONTROLLER MAY BE USED FOR FINAL 5% TO OBTAIN COOLING CFM.
  - SET MINIMUM OUTSIDE AIR DAMPER POSITION FOR COOLING AND VERIFY OUTSIDE AIR CFM PER RTU SCHEDULE.
  - NOT USED
  - NOT USED
  - USING PRODIGY CONTROLLER, VERIFY HEATING CFM EQUALS COOLING CFM.
  - ALL PRODIGY CONTROLLER SETTINGS OTHER THAN THOSE MENTIONED ABOVE SHALL REMAIN AS THEIR DEFAULT VALUE AS SET FROM THE FACTORY.
  - VERIFY POSITIVE BUILDING PRESSURE.

2600 Waltham Center Parkway  
 Suite #200  
 Waltham, FL 32751  
**JOSE J. DIAZ-VELAZQUEZ**  
 PROFESSIONAL ENGINEER  
 P (407) 661-9100  
 F (407) 661-9101  
 c-p.com  
 Photo Courtesy: Carlissa #46 C0008

PROJECT NAME: W50FB V2021-1-MA STORE #8443  
 CLIENT NAME: WAWA  
 260 W. BALTIMORE PIKE  
 WAWA, PA 19063  
 PROJECT NO: 2170816  
 DATE: 11-10-2022  
 DRAWN: JOF  
 CHECKED: ESD  
 04/06/2023

REVISION SCHEDULE

No.	Description	Date
1	PERMIT SET	11/10/2022
2	PRE-BID SET	11/14/2022
3	MECH. PLUMB & STR	03/02/2023
4	CONSTRUCTION SET	03/02/2023
5	CODE UPDATE	04/06/2023

**HVAC SCHEDULES & NOTES**  
 JOSE J. DIAZ-VELAZQUEZ  
 NLP 24658262

**M3.0**