



**PICK 'N SAVE #6432**  
501 W. MILWAUKEE STREET  
SHEBOYGAN, WI

*Pick 'n Save*

DEVELOPED BY:  
**ROUNDY'S SUPERMARKETS, INC.**  
570 E. MILWAUKEE AVENUE  
MILWAUKEE, WI 53202

**ROUNDY'S**

**DRAWING NOTES**

- ALL CONCEALED DRAWING AND OUTWORK IN CONCEALED SPACES SHALL BE INSULATED IN ACCORDANCE WITH SPECIFICATIONS.
- KITCHEN HOOD EXHAUST DUCTWORK SHALL BE INSULATED IN ACCORDANCE WITH SPECIFICATIONS.
- DUCTWORK LOCATED IN UNOCCUPIED SPACES SHALL BE INSULATED IN ACCORDANCE WITH SPECIFICATIONS AND APPLICABLE CODES.

**KEY NOTES**

- CEILING FAN TO BE INSTALLED BETWEEN ROOF JOISTS. BOTTOM OF FAN SHALL BE ABOVE BOTTOM CHORD OF ROOF JOIST PER MANUFACTURER'S RECOMMENDATIONS.
- SUSPEND CEILING FAN AS HIGH AS POSSIBLE PER MANUFACTURER'S RECOMMENDATIONS.
- MC TO PROVIDE GALVANIZED "HANT GRIP" CHASE FROM ROOF STRUCTURE TO COOLER TOP FOR REFRIGERATION PIPING. COORDINATE SIZE AND LOCATION WITH EC.
- EXHAUST FURNISHED BY EGS CONTRACTOR AND INSTALLED BY EC. SENSOR TO BE INSTALLED 7'-0" AFF OR ABOVE SLEEVING. COORDINATE LOCATION WITH OWNER AND EGS CONTRACTOR. PROVIDE WITH LOCKABLE COVER. SEE CONTRACTING WIRING SPECIFICATIONS IN COORDINATION WITH OPERATIONS SECTION 10340.
- PROVIDE QUICK DISCONNECTS AND INDIVIDUAL SHUTOFF VALVES FOR EACH GAS APPLIANCE.
- 1-1/4" G UP THROUGH ROOF.
- 1-1/2" G UP THROUGH ROOF.
- PROVIDE WITH DRIFT LEG.
- KITCHEN HOOD INSUL SYSTEM (ABOVE CEILING) MOUNT INSUL PANEL IN SPACE ADJACENT TO HOOD.
- 100 SF HOOD EXHAUST, 6" STEAM EXHAUST, 6" CLASS B VENTING, & 6" FRESH AIR DUCT CONNECTIONS TO MAIN DRAIN. REFER TO 104010.
- HANGERS/TEMPERATURE SENSOR FURNISHED BY EGS CONTRACTOR AND INSTALLED BY EC.
- TEMPERATURE SENSOR FURNISHED BY EGS CONTRACTOR AND INSTALLED BY EC.
- GAS METER PROVIDED BY UTILITY. COORDINATE FOR UTILITY TO FURNISH "PULSE SIGNAL" METER FOR CONSTRUCTION AND BUILDING GAS SYSTEM. 120W POWER REQUIRED BY EC. BUILDING LOAD: 4442 MBH.
- (1) 1013 EXHAUST DUCTS, 1818 UP TO EP-1.
- (2) 1014 EXHAUST DUCTS, 1818 UP TO EP-2.
- BOTTOM OF LOUVER FLUSH WITH FINISHED FLOOR. LOUVER AND DAMPERS SHALL BE REMOVABLE FOR REFRIGERATION EQUIPMENT SERVICE/REPAIR/REPLACE.
- TOWER BRACKET BY OWNER. SIZE DUCTWORK INTO SPACE.
- MAINTAIN ALL CLEARANCES RECOMMENDED BY MANUFACTURER.
- HANGERS/TEMPERATURE SENSOR FURNISHED BY RESSET A/E AND INSTALLED AND WIRED BY EC. COMMUNICATION WIRING FOR RESSET ARE UNIT FURNISHED AND INSTALLED BY EC. SENSOR TO BE INSTALLED 7'-0" AFF OR ABOVE SLEEVING. COORDINATE LOCATION WITH OWNER AND EGS CONTRACTOR. PROVIDE WITH LOCKABLE COVER.
- EMERGENCY 100% SPEED CONTROLLER FOR BRANCHED. PROVIDED BY MC, INSTALLED BY EC. PROVIDE WITH LOCKABLE COVER. VERIFY LOCATION WITH OWNER.

**THE MATRIX GROUP**  
ENGINEERING CONSULTANTS

311 EAST CHICAGO STREET, SUITE 310, MILWAUKEE, WI 53202  
PHONE: 414.328.2827 FAX: 414.328.2820

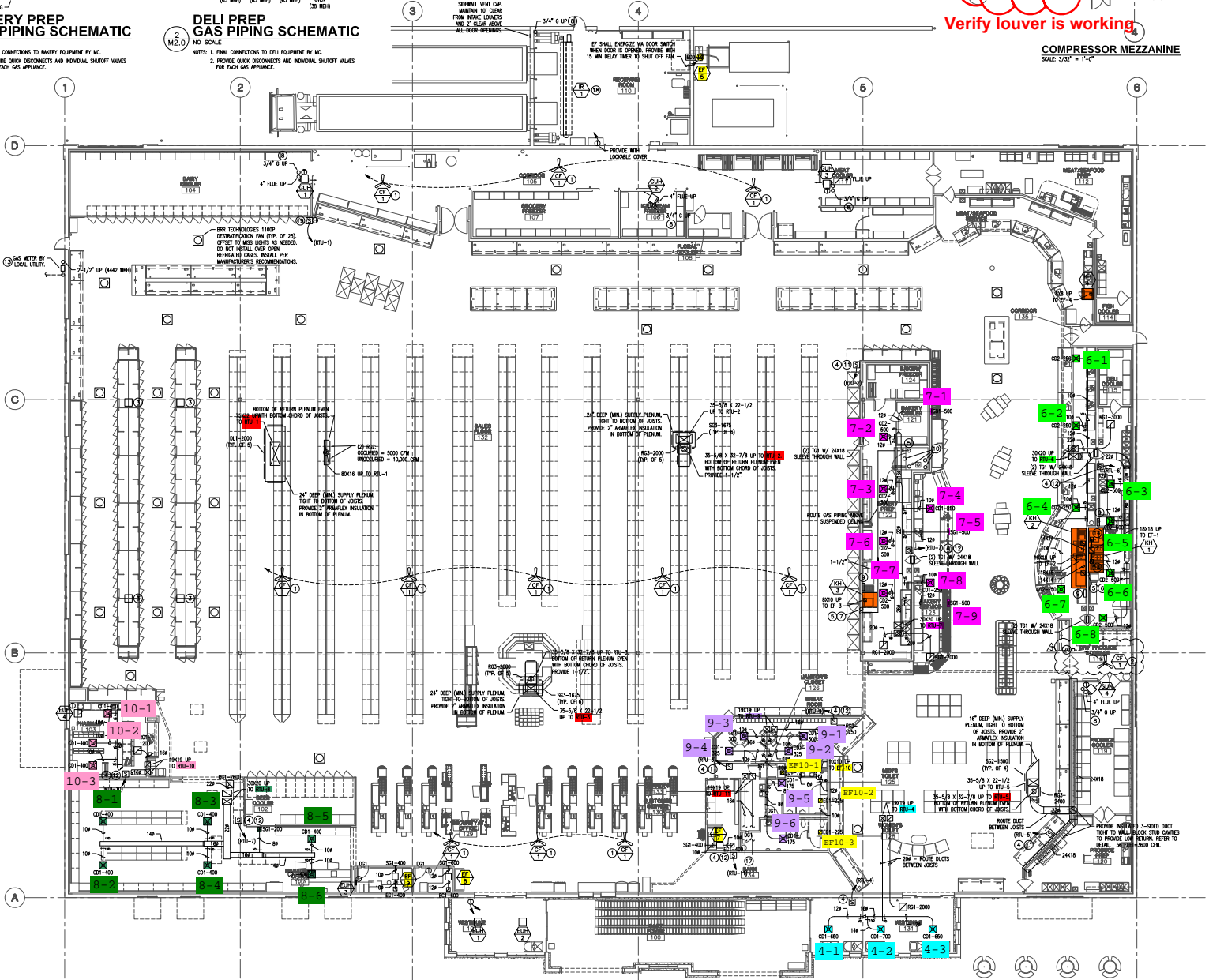
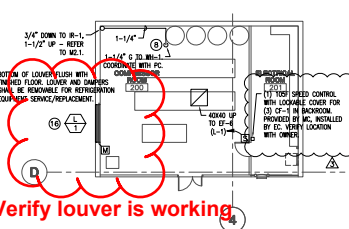
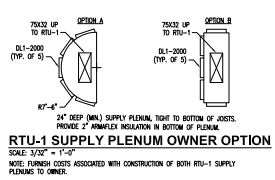
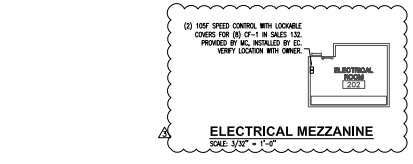
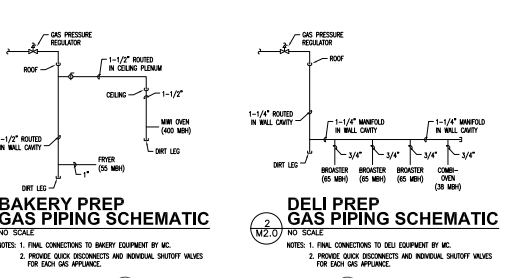
INFORMATION ON THIS DRAWING TAKES PRECEDENCE OVER THE SPECIFICATIONS MANUAL, IF THE DOCUMENTS HAVE CONFLICTING INFORMATION. WHERE SEVERAL MATERIALS ARE SPECIFIED UNDER THE SAME HEADING, SELECTION SHALL BE AT THE CONTRACTOR'S DISCRETION. CONFLICTING REQUIREMENTS SHALL BE BROUGHT TO ARCHITECT'S ATTENTION PRIOR TO BID.

NO.	DATE	BY	DESCRIPTION
1	4/14/10		CONSTRUCTION SET/CONSTRUCTION BULLETIN 3
2			
3			
4			
5			
6			
7			
8			
9			
10			

**MECHANICAL PLAN**

SCALE: 3/32"=1'-0" SHEET:  
PROJECT #: 3419-1757  
DRWN BY: JAP CHKD BY: ROZ  
BLDG. SUBMITTAL: \_\_\_\_\_

**M2.0**



**MECHANICAL PLAN**  
SCALE: 3/32" = 1'-0"

2010-04-14 CONSTRUCTION SET

**PICK 'N SAVE #6432**  
5871 N 26TH STREET  
SHEBOYGAN, WI

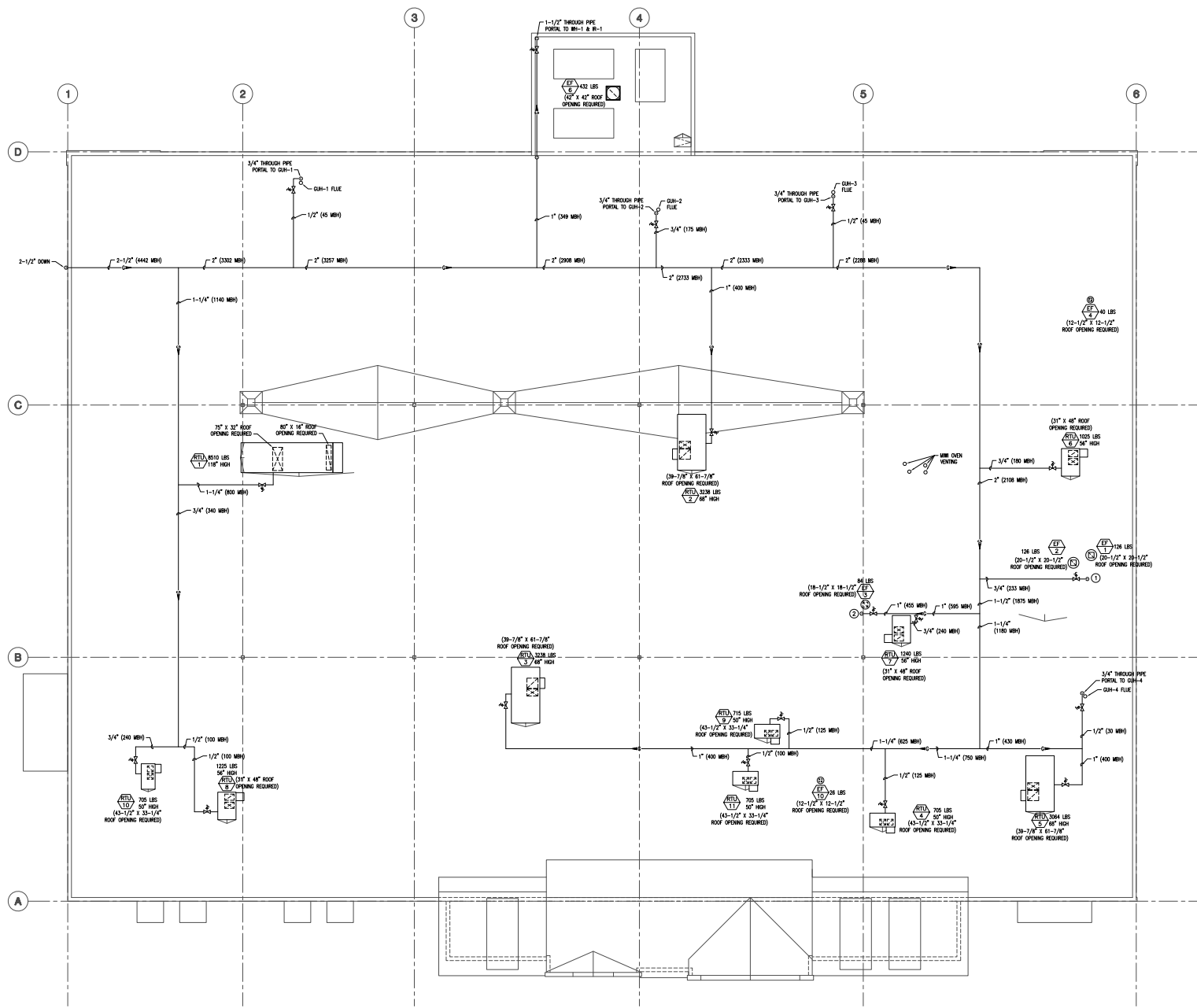
*Pick 'n Save*

DEVELOPED BY:  
**ROUNDY'S SUPERMARKETS, INC.**  
570 E. Wisconsin Avenue  
Milwaukee, WI 53202

**ROUNDY'S**

**KEY NOTES**

① 1-1/4" G THROUGH PIPE PORTAL TO CELL PREP 105.  
② 1-1/2" G THROUGH PIPE PORTAL TO BAKERY PREP 107.



**MECHANICAL ROOF PLAN**  
SCALE: 3/32" = 1'-0"

**THE MATRIX GROUP**  
ENGINEERING CONSULTANTS

311 EAST CHICAGO STREET, SUITE 310, MILWAUKEE, WI 53202  
PHONE: (414) 328-2827 FAX: (414) 328-2820

INFORMATION ON THIS DRAWING TAKES PRECEDENCE OVER THE SPECIFICATIONS MANUAL, IF THE DOCUMENTS HAVE CONFLICTING INFORMATION. WHERE SEVERAL MATERIALS ARE SPECIFIED UNDER THE SAME HEADING, SELECTION SHALL BE AT THE OPTION OF THE BIDDOR. CONFLICTING REQUIREMENTS SHALL BE BROUGHT TO ARCHITECT'S ATTENTION PRIOR TO BID.

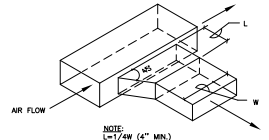
NO.	DATE	BY	DESCRIPTION
1	4/14/10		CONSTRUCTION SET
2			
3			
4			
5			
6			
7			
8			
9			
10			

**MECHANICAL ROOF PLAN**

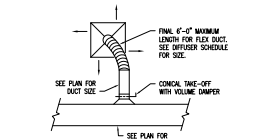
SCALE: 3/32" = 1'-0" SHEET:  
PROJECT #: 3419-1757  
DRWN BY: JSP CHKD BY: RGE  
BLDG. SUBMITTAL: -

**M2.1**

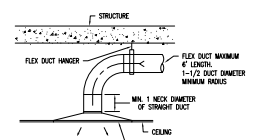
2010-04-14 CONSTRUCTION SET



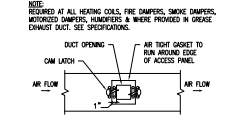
**1. BRANCH DUCT TAKE-OFF**  
M3.0 NO SCALE



**2. ROUND DUCT TAKE-OFF**  
M3.0 NO SCALE



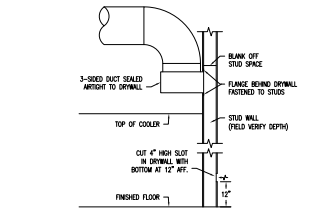
**3. SUPPLY DIFFUSER DETAIL**  
M3.0 NO SCALE



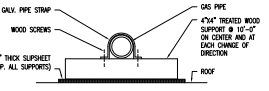
**4. ACCESS PANEL DETAIL**  
M3.0 NO SCALE

DUCT SIZE	ACCESS PANEL SIZE
4" TO 10"	10" X 10" (DUCT DEPTH=2") 0
10" TO 24"	12" X 12" (DUCT DEPTH=2") 0
24" AND ABOVE	18" X 18" (DUCT DEPTH=2") 0

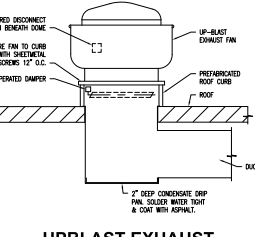
ALL OTHER ACCESS PANELS TO BE A MINIMUM OF 12" X 12" WHERE DUCT SIZE ALONG USE FOUR CAM LATCHES ON PANELS LARGER THAN 18" X 18" SIZE.



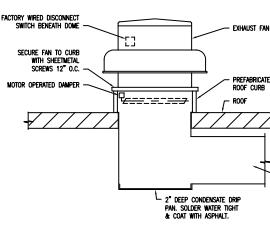
**5. PRODUCE LOW RETURN INLET**  
M3.0 NO SCALE



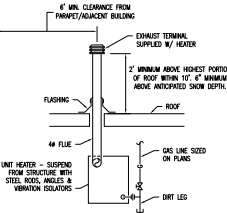
**6. GAS PIPING SUPPORT**  
M3.0 NO SCALE



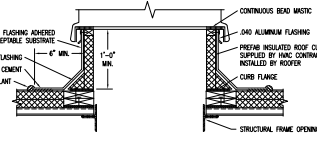
**7. UPBLAST EXHAUST FAN WITH DUCTWORK**  
M3.0 NO SCALE



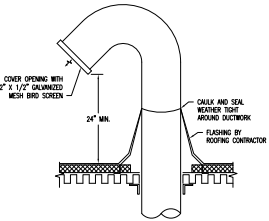
**8. EXHAUST FAN WITH DUCTWORK**  
M3.0 NO SCALE



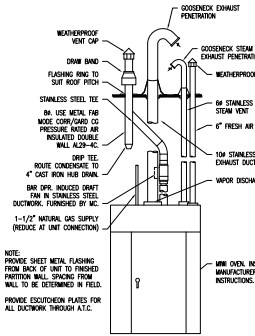
**9. GAS UNIT HEATER**  
M3.0 NO SCALE



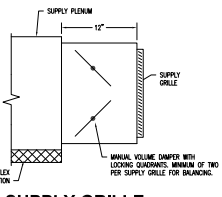
**10. ROOF CURB DETAIL**  
M3.0 NO SCALE



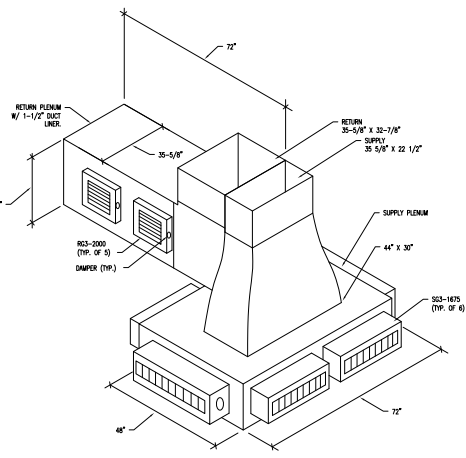
**11. MIWI OVEN GOOSENECK**  
M3.0 NO SCALE



**12. MIWI OVEN VENTING**  
M3.0 NO SCALE

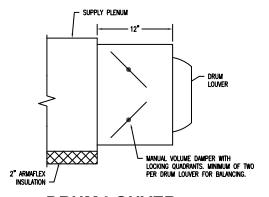


**13. SUPPLY GRILLE AT SUPPLY PLENUM**  
M3.0 NO SCALE

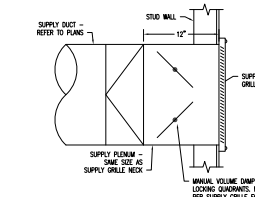


**17. SUPPLY PLENUM (RTU-2, 3)**  
M3.0 NO SCALE

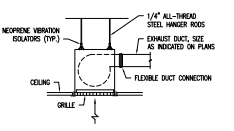
NOTE: PROVIDE 1-1/2" DUCT LINER IN RETURN DUCT/PLENUM AND 2" FIBERGLASS INSULATION ON INSIDE BOTTOM OF SUPPLY PLENUM.



**14. DRUM LOUVER AT SUPPLY PLENUM**  
M3.0 NO SCALE



**15. SUPPLY GRILLE AT WALL**  
M3.0 NO SCALE



**16. CEILING FAN DETAIL**  
M3.0 NO SCALE

311 East Chicago Street  
Suite 410  
Milwaukee, WI 53202

**SHA**  
Schmidt & Hall Architects

414-226-1100  
414-226-1264  
www.ssha.com

**PICK 'N SAVE #6432**  
3811 W. 26TH STREET  
SHEBOYGAN, WI

*Pick 'n Save*

DEVELOPED BY:  
**ROUNDY'S SUPERMARKETS, INC.**  
570 E. Wisconsin Avenue  
Milwaukee, WI 53202

**ROUNDY'S**

**THE MATRIX GROUP**  
ENGINEERING CONSULTANTS

311 EAST CHICAGO STREET, SUITE 310, MILWAUKEE, WI 53202  
PHONE: (414) 328-3027 FAX: (414) 328-3020

INFORMATION ON THIS DRAWING TAKES PRECEDENCE OVER THE SPECIFICATIONS MANUAL, IF THE DOCUMENTS HAVE CONFLICTING INFORMATION. WHERE SEVERAL MATERIALS ARE SPECIFIED UNDER THE SAME HEADING, SELECTION SHALL BE AT THE OPTION OF THE BIDDER. CONFLICTING REQUIREMENTS SHALL BE BROUGHT TO ARCHITECT'S ATTENTION PRIOR TO BID.

NO.	DATE	BY	DESCRIPTION
▲	3/18/10		CONSTRUCTION BULLETIN 1
▲	4/14/10		CONSTRUCTION SET
▲			
▲			
▲			
▲			
▲			
▲			
▲			

**MECHANICAL DETAILS**

SCALE: NONE SHEET:  
PROJECT #: 3419-1757  
DRAWN BY: THT CHKD BY: RGE  
BLDG. SUBMITTAL: -

**M3.0**

2010-04-14 CONSTRUCTION SET