

- PLAN NOTES:**
- COORDINATE LOCATION OF FURNACE WITH GC.
 - BALANCE OUTSIDE AIR DAMPERS TO VALUES LISTED IN MECHANICAL SCHEDULES. ROUTE OUTSIDE AIR DUCT OUT THROUGH ROOF AND TERMINATE IN A GOOSENECK FITTING.
 - ROUTE 3/4" CONDENSATE DRAIN FROM FURNACE TO JANITORS SINK. FIELD VERIFY EXACT ROUTING AND REQUIREMENTS. SLOPE 1/8" PER 1' DOWN AWAY FROM THE FURNACE.
 - ROUTE FLUE AND COMBUSTION AIR VENT TO ROOF AND TERMINATE IN A CONCENTRIC VENT KIT.
 - PROVIDE 7 DAY FULLY PROGRAMMABLE THERMOSTATS WITH SENSORS AS SHOWN ON PLAN. THERMOSTATS AND SENSORS MUST BE CAPABLE OF CONTROLLING ALL FUNCTIONALITY OF EQUIPMENT BEING CONTROLLED. MOUNT THERMOSTATS AT 48" AFF. PROVIDE LOW VOLTAGE CONTROL WIRING AND MAKE SYSTEM FULLY FUNCTIONAL.
 - DUCT UP TO ROOFTOP UNIT. COORDINATE DUCT PENETRATIONS WITH EXISTING OPENINGS. COORDINATE WITH STRUCTURAL REINFORCEMENTS.

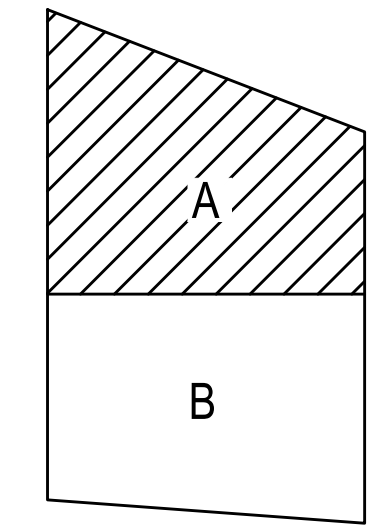


**WATER LILY
LEARNING CENTER**
1808 CENTRAL PARKWAY
CINCINNATI, OH, 45214



REVISIONS

△	PLAN REVIEW RESPONSE	05/31/23
△	PLAN REVIEW RESPONSE	07/11/23



CONTRACTOR NOTE

IT IS THE RESPONSIBILITY OF THE CONTRACTOR TO NOTIFY THE ARCHITECT, LANDLORD AND TENANT OF ANY DISCREPANCIES ENCOUNTERED ON THE PLANS OR IN EXISTING SITE CONDITIONS PRIOR TO SUBMISSION OF BID.

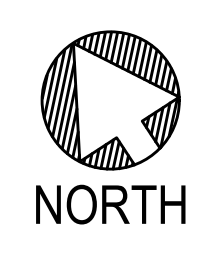
BIDDERS ARE TO VISIT THE SITE AND FAMILIARIZE THEMSELVES WITH EXISTING CONDITIONS AND SATISFY THEMSELVES AS TO THE NATURE AND SCOPE OF THE WORK. THE BASE BID SHALL REFLECT MODIFICATIONS TO SYSTEMS AND DEVICES AS REQUIRED BY STATE, LOCAL AND FEDERAL CODES WHETHER INDICATED OR NOT ON CONTRACT DOCUMENTS. THE SUBMISSIONS OF A BID WILL BE EVIDENCE THAT SUCH AN EXAMINATION AND COMPLIANCE WITH GOVERNING CODES/REQUIREMENTS HAS BEEN MADE. LATER CLAIMS FOR LABOR, EQUIPMENT, OR MATERIALS REQUIRED, OR FOR DIFFICULTIES ENCOUNTERED WHICH COULD HAVE BEEN FORESEEN HAD AN EXAMINATION AND CODE/REQUIREMENTS REVIEW BEEN MADE, WILL NOT BE ALLOWED.

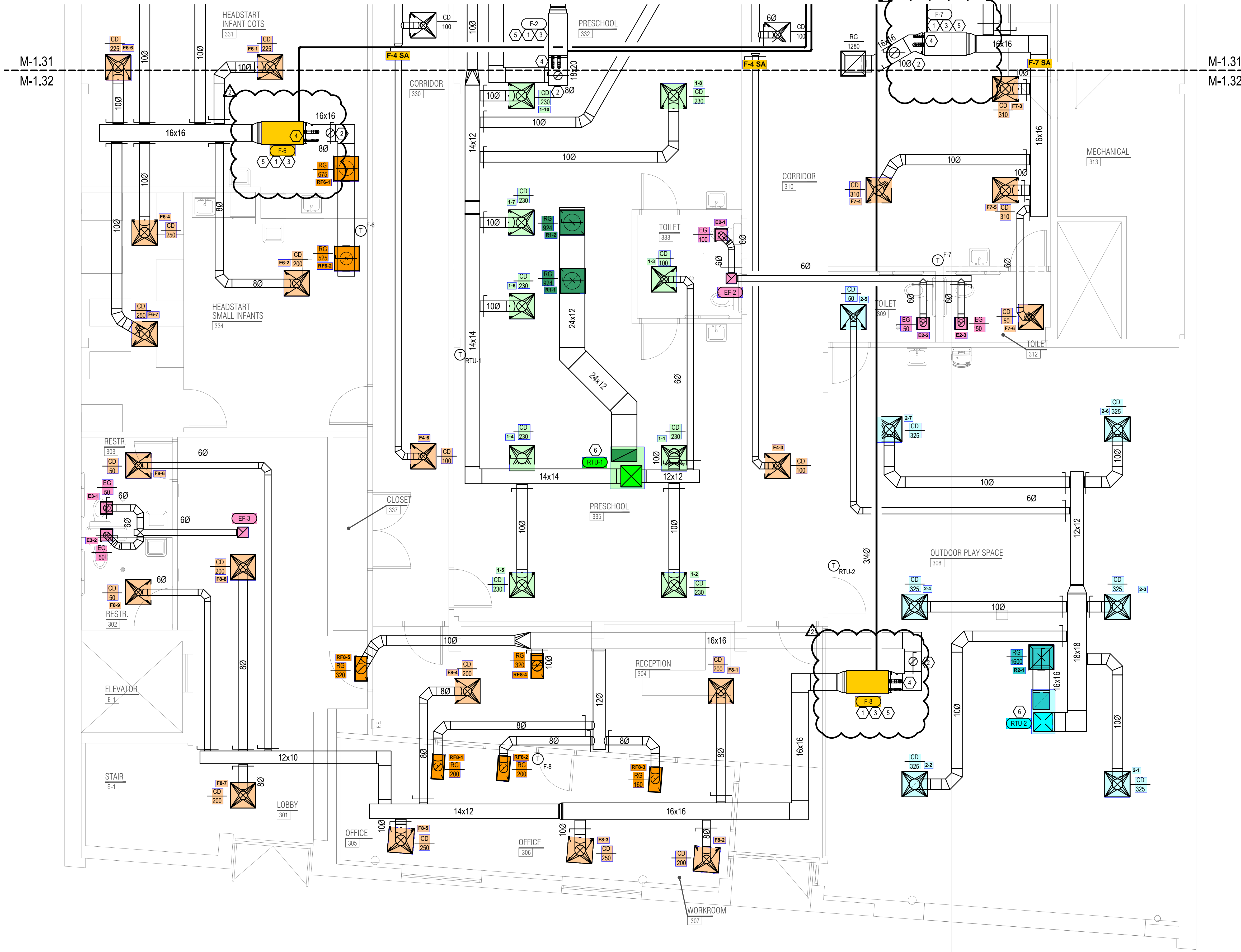
DATE:	04.18.23
DRAWN BY:	STAFF
SCALE:	AS NOTED
JOB NO.:	23012

TITLE:
3RD FLOOR MECHANICAL
PLAN - A

SHEET NO:
M-1.31

3RD FLOOR MECHANICAL PLAN - A | 1
1/4"=1'-0" M-1.31



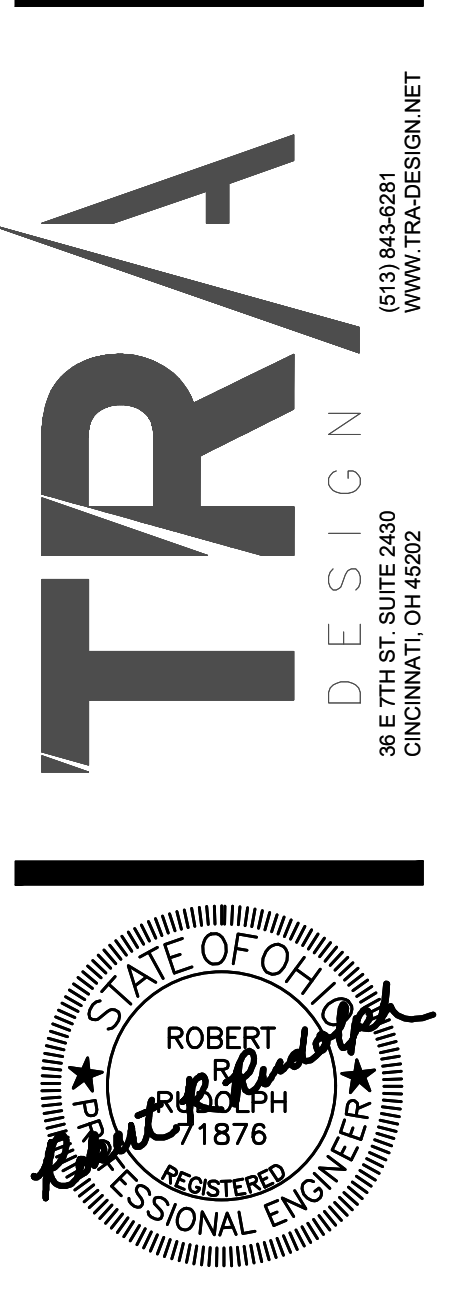


3RD FLOOR MECHANICAL PLAN - B | 1
1/4"=1'-0" M-1.32



- PLAN NOTES:**
- COORDINATE LOCATION OF FURNACE WITH GC.
 - BALANCE OUTSIDE AIR DAMPERS TO VALUES LISTED IN MECHANICAL SCHEDULES. ROUTE OUTSIDE AIR DUCT OUT THROUGH ROOF AND TERMINATE IN A GOOSENECK FITTING.
 - ROUTE 3/4" CONDENSATE DRAIN FROM FURNACE TO JANITORS SINK. FIELD VERIFY EXACT ROUTING AND REQUIREMENTS. SLOPE 1/8" PER 1' DOWN AWAY FROM THE FURNACE.
 - ROUTE FLUE AND COMBUSTION AIR VENT TO ROOF AND TERMINATE IN A CONCENTRIC VENT KIT.
 - PROVIDE 7 DAY FULLY PROGRAMMABLE THERMOSTATS WITH SENSORS AS SHOWN ON PLAN. THERMOSTATS AND SENSORS MUST BE CAPABLE OF CONTROLLING ALL FUNCTIONALITY OF EQUIPMENT BEING CONTROLLED. MOUNT THERMOSTATS AT 48" AFF. PROVIDE LOW VOLTAGE CONTROL WIRING AND MAKE SYSTEM FULLY FUNCTIONAL.
 - DUCT UP TO ROOFTOP UNIT. COORDINATE DUCT PENETRATIONS WITH EXISTING OPENINGS. COORDINATE WITH STRUCTURAL REINFORCEMENTS.

**WATER LILY
LEARNING CENTER**
1808 CENTRAL PARKWAY
CINCINNATI, OH, 45214



REVISIONS

△	PLAN REVIEW RESPONSE	05/31/23
△	PLAN REVIEW RESPONSE	07/11/23

DATE:	04.18.23
DRAWN BY:	STAFF
SCALE:	AS NOTED
JOB NO.:	23012

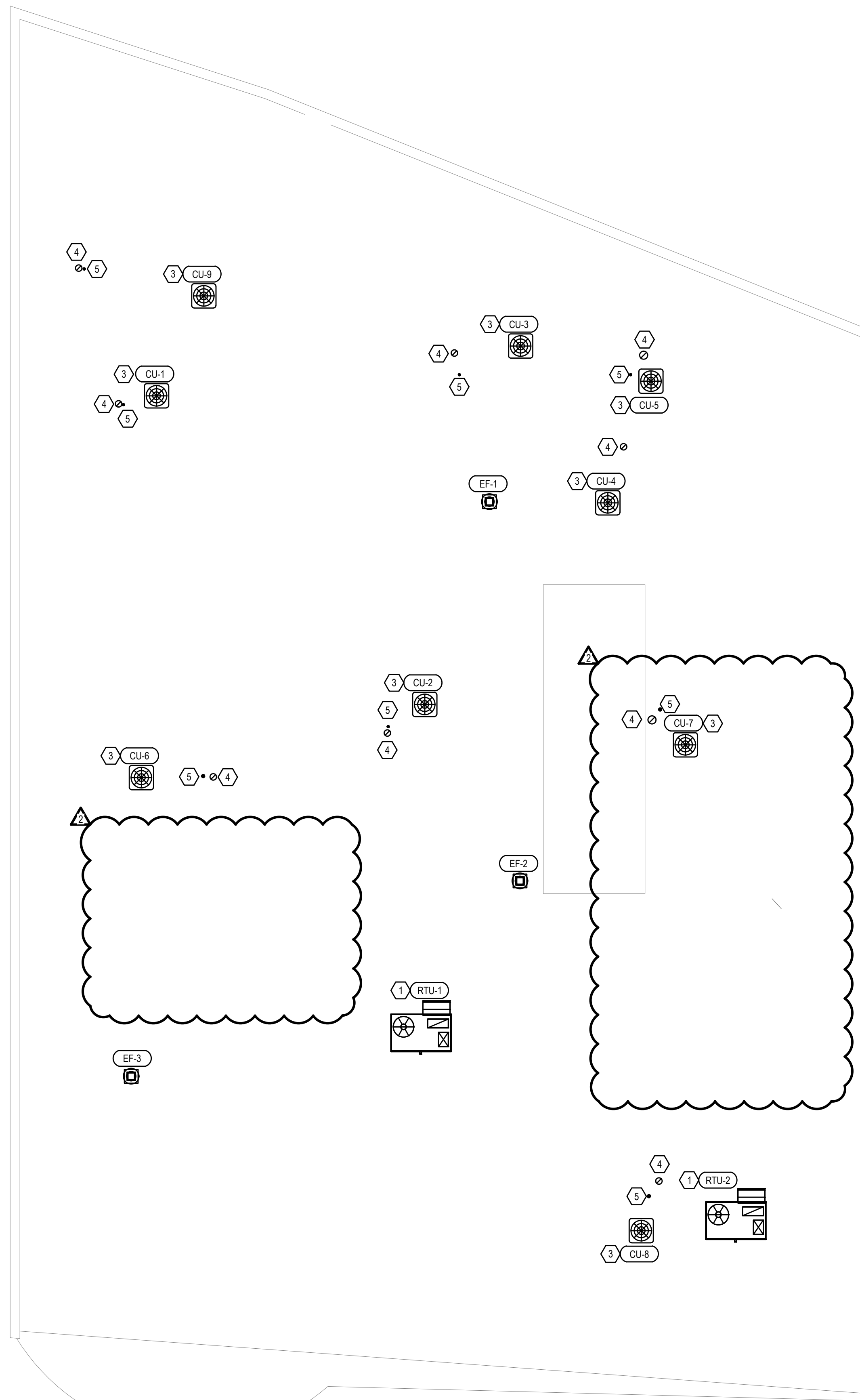
TITLE:
3RD FLOOR MECHANICAL
PLAN - B

SHEET NO:
M-1.32

CONTRACTOR NOTE

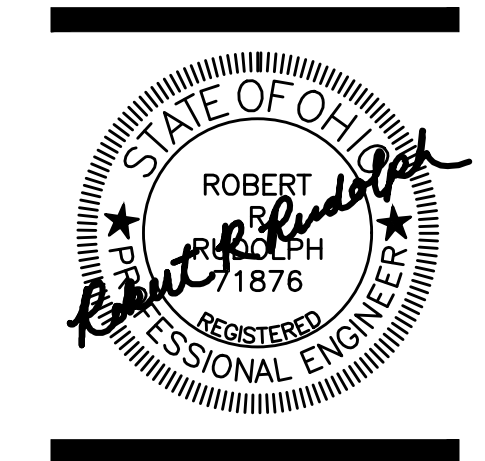
IT IS THE RESPONSIBILITY OF THE CONTRACTOR TO NOTIFY THE ARCHITECT, LANDLORD AND TENANT OF ANY DISCREPANCIES ENCOUNTERED ON THE PLANS OR IN EXISTING SITE CONDITIONS PRIOR TO SUBMISSION OF BID.

BIDDERS ARE TO VISIT THE SITE AND FAMILIARIZE THEMSELVES AS TO THE NATURE AND SCOPE OF THE WORK. THE BASE BID SHALL REFLECT MODIFICATIONS TO SYSTEMS AND DEVICES AS REQUIRED BY STATE, LOCAL AND FEDERAL CODES WHETHER INDICATED OR NOT ON CONTRACT DOCUMENTS. THE SUBMISSIONS OF A BID WILL BE EVIDENCE THAT SUCH AN EXAMINATION AND COMPLIANCE WITH GOVERNING CODES/REQUIREMENTS HAS BEEN MADE. LATER CLAIMS FOR LABOR, EQUIPMENT, OR MATERIALS REQUIRED, OR FOR DIFFICULTIES ENCOUNTERED WHICH COULD HAVE BEEN FORESEEN HAD AN EXAMINATION AND CODE/REQUIREMENTS REVIEW BEEN MADE, WILL NOT BE ALLOWED.



- PLAN NOTES:**
1. NEW ROOFTOP UNIT. COORDINATE INSTALLATION WITH GC.
 2. ROUTE FURNACE FLUE AND COMBUSTION AIR INTAKE, SIZED PER MANUFACTURER'S REQUIREMENTS, UP THROUGH ROOF WITH CONCENTRIC VENT KIT.
 3. COORDINATE LOCATION OF CONDENSING UNIT WITH GC.
 4. TERMINATE OA DUCT IN A GOOSENECK FITTING.
 5. TERMINATE IN A CONCENTRIC VENT KIT. MAINTAIN A 3 FEET VERTICAL ABOVE OR 10 FEET HORIZONTAL DISTANCE BETWEEN OA INTAKES.

MECHANICAL ROOF PLAN | 1
1/8"=1'-0" | M-2.1



**WATER LILY
LEARNING CENTER**
1808 CENTRAL PARKWAY
CINCINNATI, OH, 45214



REVISIONS	
1	PLAN REVIEW RESPONSE 05/31/23

CONTRACTOR NOTE

IT IS THE RESPONSIBILITY OF THE CONTRACTOR TO NOTIFY THE ARCHITECT, LANDLORD AND TENANT OF ANY DISCREPANCIES ENCOUNTERED ON THE PLANS OR IN EXISTING SITE CONDITIONS PRIOR TO SUBMISSION OF BID.

BIDDERS ARE TO VISIT THE SITE AND FAMILIARIZE THEMSELVES WITH EXISTING CONDITIONS AND SATISFY THEMSELVES AS TO THE NATURE AND SCOPE OF THE WORK. THE BASE BID SHALL REFLECT MODIFICATIONS TO SYSTEMS AND DEVICES AS REQUIRED BY STATE, LOCAL AND FEDERAL CODES WHETHER INDICATED OR NOT ON CONTRACT DOCUMENTS. THE SUBMISSIONS OF A BID WILL BE EVIDENCE THAT SUCH AN EXAMINATION AND COMPLIANCE WITH GOVERNING CODES/REQUIREMENTS HAS BEEN MADE. LATER CLAIMS FOR LABOR, EQUIPMENT, OR MATERIALS REQUIRED, OR FOR DIFFICULTIES ENCOUNTERED WHICH COULD HAVE BEEN FORESEEN HAD AN EXAMINATION AND CODE/REQUIREMENTS REVIEW BEEN MADE, WILL NOT BE ALLOWED.

DATE:	04.18.23
DRAWN BY:	STAFF
SCALE:	AS NOTED
JOB NO.:	23012

TITLE:
MECHANICAL ROOF PLAN

SHEET NO.:
M-2.1