

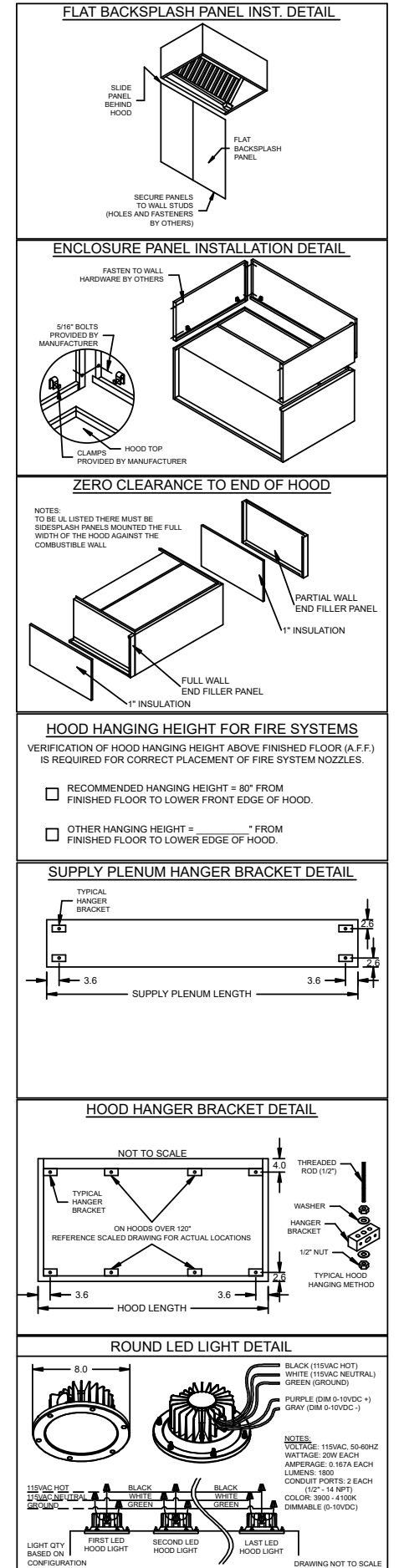
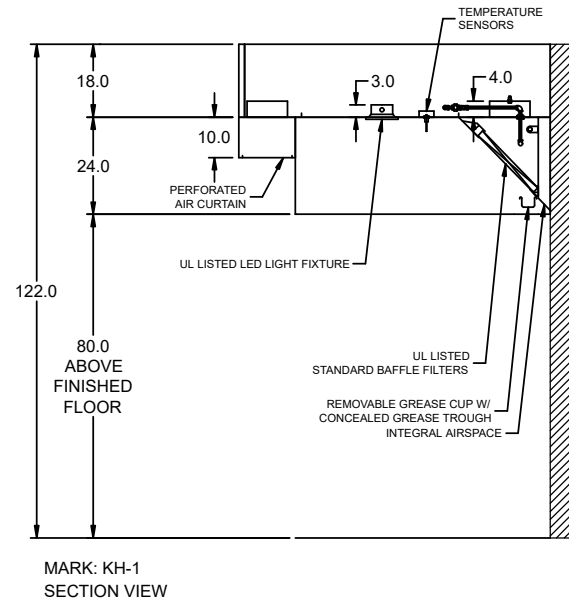
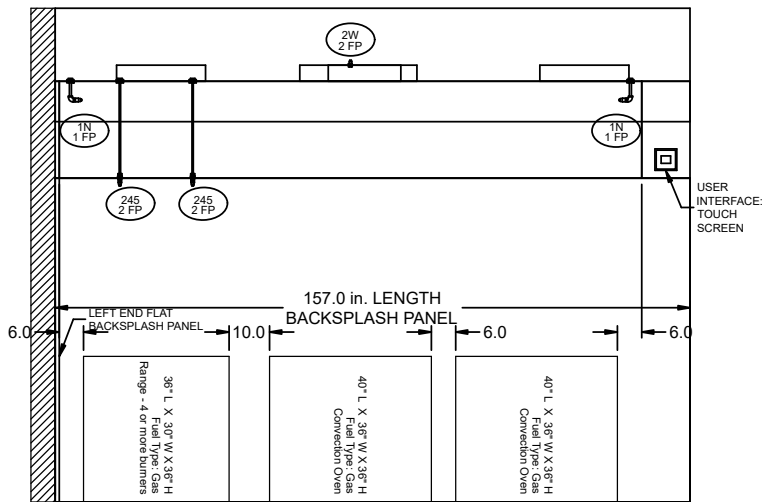
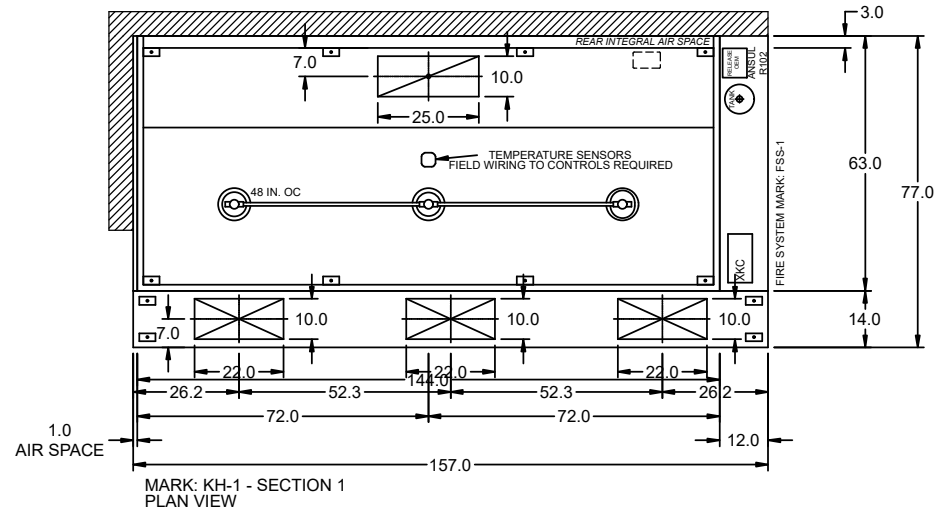
| HOOD INFORMATION | | | | | | | | | | | | | | | | | |
|------------------|------|------------|-----------------------|-------|--------|----------------------|----------------------------|-----------|-----------|------|-----|---------|--------|------|-------------------|------------------|--------|
| HOOD NO. | MARK | MODEL | HOOD DIMENSIONS (IN.) | | | HOOD CONSTR. | COOKING LOAD / DUTY RATING | EXHAUST | | | | | SUPPLY | | TOTAL WEIGHT LBS. | SECTION LOCATION | |
| | | | LENGTH | WIDTH | HEIGHT | | | TOTAL CFM | COLLAR(S) | | | MUA CFM | AC CFM | | | | |
| | | | | | | | | WIDTH | LENGTH | DIA. | CFM | S.P. | | | | | |
| 1 | KH-1 | XBEW-144-S | 144 | 63 | 24 | 430 SS WHERE EXPOSED | HEAVY | 2640 | 10 | 25 | | 2640 | 0.402 | 2376 | | 492 | SINGLE |

| HOOD INFORMATION | | | | | | | | | | | | | | | | |
|------------------|------|------------------|------------------|-----|--------------|---------------------------|-----------------|-----|------------|--------------------|-------------|-------|------------|---|-----|-------------|
| HOOD NO. | MARK | LIGHTING DETAILS | | | | GREASE FILTRATION DETAILS | | | | UTILITY CABINET(S) | | | | | | |
| | | FIXTURE TYPE | BULB / LAMP INFO | QTY | FOOT CANDLES | TYPE / MODEL | MATERIAL | QTY | SIZE (IN.) | LOCATION | FIRE SYSTEM | | CONTROLS | | | |
| | | | | | | | | | | | | | | | | |
| 1 | KH-1 | ROUND LED | | 3 | 69.77 | BAFFLE | STAINLESS STEEL | 4 | 16 | 20 | 20 | RIGHT | ANSUL R102 | 3 | XKC | TOUCHSCREEN |

| SUPPLY PLENUM INFORMATION | | | | | | | | | | | | | | | | | | | | |
|---------------------------|------|-------|------|------------|----|----|-----------|-----------|--------------|-----|-----------|---------|----------|-----|----|----|------|-----|------|------|
| HOOD NO. | MARK | POS. | TYPE | SIZE (IN.) | | | INSULATED | DAMPER(S) | LED LIGHT(S) | | TOTAL CFM | COLLARS | | | | | | | | |
| | | | | L | W | H | | | SUPPLIED | QTY | | TYPE | MOUNTING | QTY | W | L | DIA. | CFM | S.P. | VEL. |
| 1 | KH-1 | FRONT | ASP | 157 | 14 | 10 | NO | NO | NO | | 2376 | MUA | FACTORY | 3 | 10 | 22 | | 792 | 0.15 | 518 |

HOOD OPTIONS

- UL 710 LISTED W/ OUT EXHAUST FIRE DAMPER - UL #R25625
- BACK INTEGRAL AIR SPACE - 3 IN WIDE
- LEFT NON-INTEGRAL AIR SPACE - 1 IN THICK - ZERO CLEARANCE
- 18 IN HIGH CEILING ENCLOSURES - FRONT LEFT RIGHT - FIELD INSTALLED
- FACTORY MOUNTED EXHAUST COLLAR(S)
- FILTER REMOVAL TOOL INCLUDED - QTY 1
- BACKSPLASH 80.00 IN HIGH 157.00 IN LONG
- LEFT SIDESPLASH 80.00 IN HIGH 48.00 IN LONG
- PERFORMANCE ENHANCING LIP (PEL) TECHNOLOGY
- STANDING SEAM CONSTRUCTION FOR SUPERIOR STRENGTH



FIRE SYSTEM INFORMATION

| MARK | MODEL | LOCATION | FLOW POINTS | | SUPPLY LINE | DETECTION | MARK(S) PROTECTED BY FIRE SYSTEM |
|-------|-----------------------------|-----------------------------|----------------------------|-----|-------------|--------------|----------------------------------|
| | | | HOODS | PCU | | | |
| FSS-1 | ANSUL R-102 WET CHEMICAL | CABINET – RIGHT END OF KH-1 | 8 UTILIZED 11 AVAILABLE | | CONTINUOUS | FUSIBLE LINK | KH-1 SECTION 1 |

FIRE SYSTEM OPTIONS AND ACCESSORIES

- FULL INSTALLATION (INCLUDES PRE-PIPED HOOD(S) WITH DETECTION AND FACTORY COORDINATED INSTALL)
- CHROME SLEEVES FOR FACTORY PROVIDED APPLIANCES DROPS - INCLUDED
- METAL BLOW-OFF CAPS - INCLUDED
- GAS VALVE - INCLUDED - MECHANICAL SHUTOFF VALVE, 2", (ANSUL) - PART# ANSULMECHSHUTOFFVALVE200
- HOOD SUPPRESSION AGENT - INCLUDED - 3 GAL. - ((1) 3.0 TANK(S))
- REMOTE PULL STATION - STANDARD - INSTALLATION AT SINGLE POINT OF EGRESS

ANSUL R102 (WET CHEMICAL) FIRE PROTECTION SYSTEM - MODEL FSSC

CONTROL PANEL

NOT TO SCALE

NOTES:

WET CHEMICAL FIRE PROTECTION SYSTEM TO BE ANSUL R-102, DESIGNED IN COMPLIANCE WITH UL 300 REQUIREMENTS.

- VERIFICATION OF ALL COOKING EQUIPMENT MAKE, MODEL AND LOCATION REQUIRED FOR ALL FIRE PROTECTION SYSTEMS.
- ALL FIRE SYSTEM PIPING IS STANDARDLY TO THE RIGHT END OF THE HOOD UNLESS A WALL IS LOCATED ON THE RIGHT END.
- ANSUL AUTOMAN RELEASE TO BE LOCATED WITHIN 60" OF HOOD.

THE BASIC FIRE SYSTEM WILL INCLUDE THE FOLLOWING:

- GAS SHUT-OFF VALVE, IF REQUIRED, TO BE SUPPLIED BY MANUFACTURER (UP TO 2" DIAMETER AS STANDARD), AND INSTALLED BY A LICENSED PLUMBER.
- MICRO SWITCH TO BE SUPPLIED BY MANUFACTURER FOR CONNECTION TO, BUT NOT LIMITED TO, BUILDING ALARM SYSTEM(S), EXHAUST AND SUPPLY FANS AND ELECTRICAL POWER SHUT DOWN. FIELD WIRING AND CONNECTIONS TO BE PERFORMED BY A LICENSED ELECTRICIAN.

THE BASIC FIRE SYSTEM DOES NOT INCLUDE THE FOLLOWING:

- FULL DUMP TEST OTHER THAN WHAT IS SPECIFIED PER THE INSTALLATION MANUAL, OR TO SATISFY A STATE OR LOCAL CODE. PERMIT AND TESTING FEES ARE NOT INCLUDED UNLESS NOTED UNDER THE EQUIPMENT SCHEDULE FOR THE FIRE SYSTEM.
- MORE THAN TWO TRIPS TO THE JOBSITE OR SPECIAL TRANSPORTATION, OR OVERNIGHT LODGING REQUIREMENTS IN REMOTE AREAS. NORMAL TRAVEL DISTANCE IS FIRST 50 MI. (80.5 KM) FROM OFFICE.
- SPECIAL CLASSES OR ADDITIONAL LABOR FOR ACCESS TO SECURITY SENSITIVE AREAS
- INSTALLATION OF GAS SHUT-OFF VALVE.
- SPECIAL DRAWINGS REQUIRED TO SATISFY STATE OR LOCAL CODE. PLAN EXAMINATION FEES, PE OR PS APPROVAL STAMP.
- UNION LABOR, GOVERNMENT LABOR, OR PREVAILING WAGES REQUIRED FOR FINAL FIELD HOOK-UP.
- ANY AND ALL ELECTRICAL COMPONENTS/CONNECTIONS REQUIRED TO SHUT DOWN FANS, SHUT OFF DEVICE FOR ELECTRIC COOKING EQUIPMENT (SHUNT TRIP BREAKER), OR ACTIVATE AN ALARM SYSTEM, ETC.
- ANY DISMANTLING OR REASSEMBLY REQUIRED TO GAIN ACCESS TO THE FIRE SUPPRESSION PIPING LOCATED ON THE TOP OF THE HOOD.
- ROUGH-IN HIDDEN CONDUIT FOR REMOTE PULL STATION OR GAS VALVE (FLUSH MOUNTED PULL STATION).
- INSTALLATION OF MORE THAN (1) REMOTE PULL STATIONS OR DISTANCES GREATER THAN 20 FT (6.1M).
- PARTS OR LABOR REQUIRED TO CORRECT PIPING DUE TO COOKING EQUIPMENT CHANGES OR DEVIATION FROM PLANS, OR ANY CHARGES FOR MISSING OR ADDITIONAL PARTS OTHER THEN THOSE INDICATED ON THE FIRE SUPPRESSION DETAIL.

WIRING DIAGRAMS W/DPDT MICRO SWITCH

DPDT SWITCHES PROVIDED BY MANUFACTURER MAY BE WIRED PER TYPICAL EXAMPLES SHOWN, VERIFY WITH LOCAL CODES AND EQUIPMENT SUPPLIED AS THE CONNECTION NEEDED FOR YOUR INSTALLATION.

CONNECTION TO BUILDINGS ALARM

CONNECTION TO COOKING EQUIPMENT SHUT DOWN

CONNECTION TO FAN SHUT DOWN

NOTES:

1. _____ DENOTES FIELD INSTALLATION.
2. _____ DENOTES FACTORY INSTALLATION.
3. DO NOT USE BLACK WIRE OR SNAP-ACTION SWITCH IN NORMAL INSTALLATION. BLACK WIRE TO BE USED ONLY FOR EXTRANEOUS ALARM, LIGHT CIRCUITS, ETC.

ACCUREX

ACCUREX W/IA
PHILLIP KRAFT
PHILLIP.KRAFT@ACCUREX.COM
(262)227-7865

PROJECT
5/21/2021

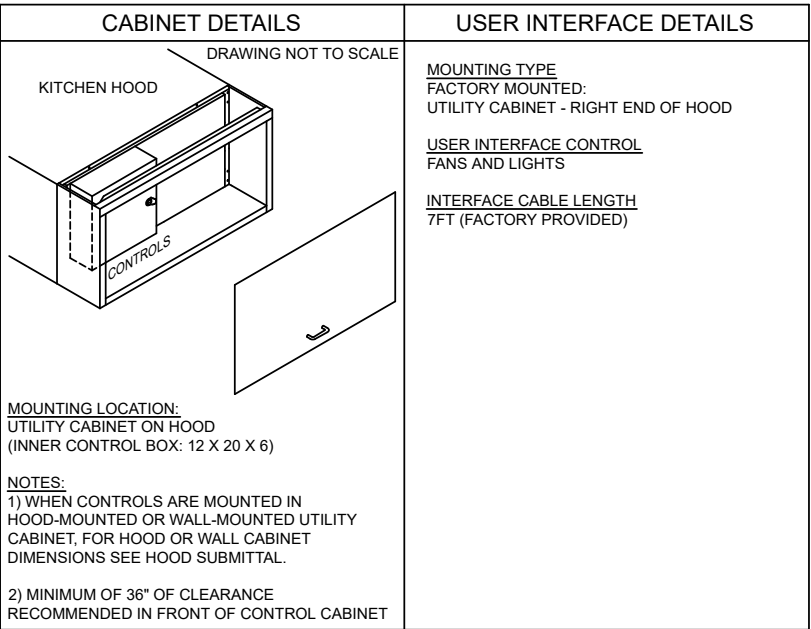
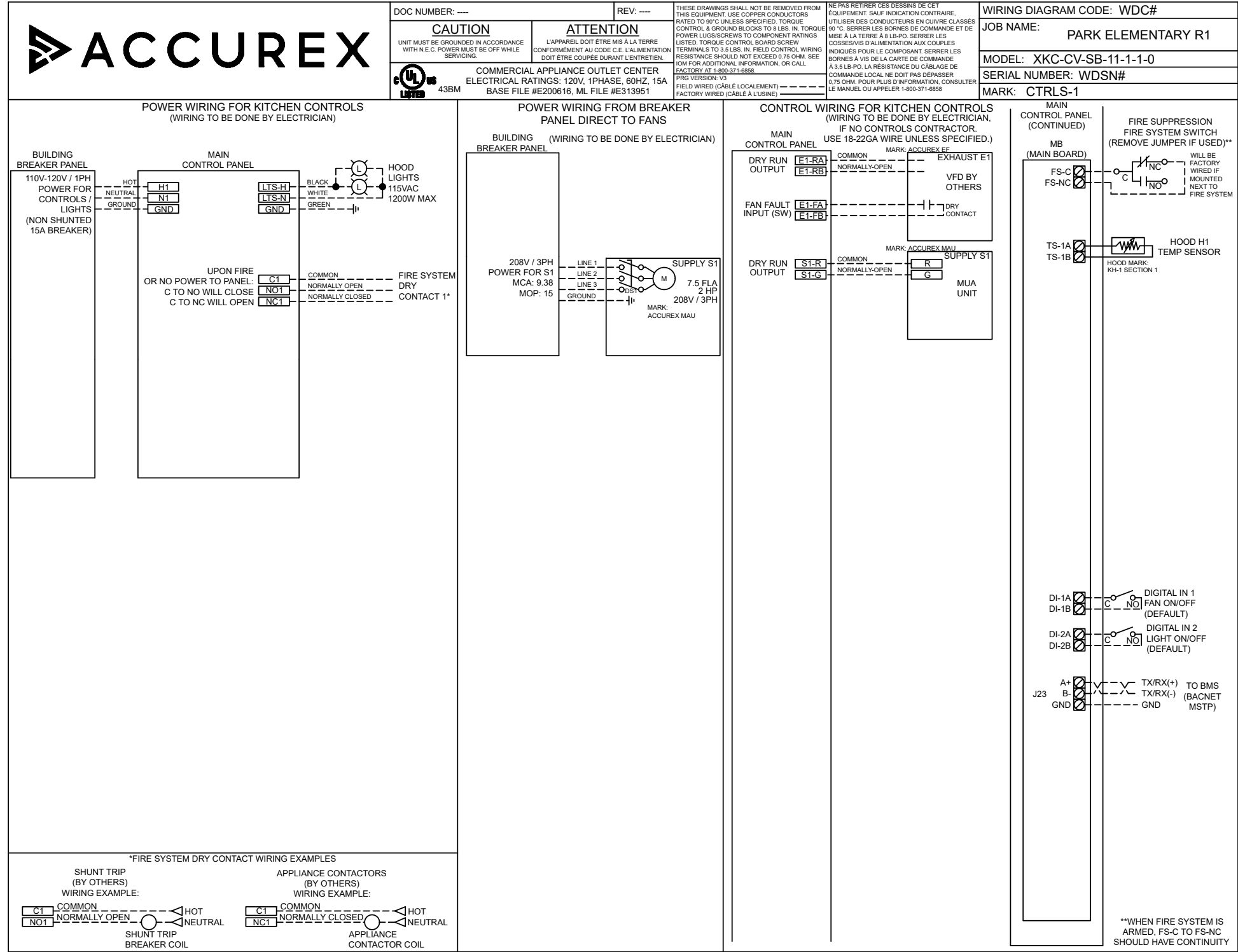
MARK
FSS-1

PARK ELEMENTARY R1

CONTROL INFORMATION

| MARK | ELECTRICAL CONTROL PACKAGE | | USER INTERFACE | | FANS CONTROLLED | | | | | | | | | | | |
|---------|----------------------------|-----------------------|------------------------|---------------------------------|-----------------|---------|-----|-------------|------|------|----------|------------|-------|-------------|------------------------|--------------|
| | MODEL | LOCATION | TYPE | LOCATION | FAN # | TYPE | FAN | FAN MARK | ZONE | CFM | MOTOR HP | MOTOR VOLT | CYCLE | MOTOR PHASE | MOTOR STARTER IN PANEL | VFD IN PANEL |
| CTRLS-1 | XKC-CV-SB-11-1-1-0 | RIGHT CABINET ON KH-1 | FULL COLOR TOUCHSCREEN | CABINET - RIGHT CABINET ON KH-1 | 1 | EXHAUST | E1 | ACCUREX EF | 1 | 2640 | 2 | 208 | 60 | 3 | NO | NO |
| | | | | | 2 | SUPPLY | S1 | ACCUREX MAU | 1 | 2376 | 2 | 208 | 60 | 3 | NO | NO |

CONTROL FEATURES
 HOOD LIGHT CONTROL
 TEMP SENSORS (FACTORY PROVIDED) - QTY. 1
 DRY FIRE CONTACTS - QTY. 1
 LIGHTS OFF DURING FIRE
 EXHAUST MAX DURING FIRE
 SUPPLY OFF DURING FIRE
 BMS INTEGRATION - BACNET MSTP

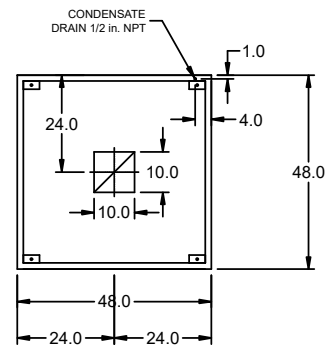


| ZONE CONFIGURATION | | | | | | | WIRING DIAGRAM CODE: WDC# | | | | | |
|---|---------|----------------|-------------|---------|---------|-----------------|--|-------------------------------------|----------|----------|---------|---------|
| ZONE # | ZONE | ROOM TEMP | | | | | JOB NAME: | PARK ELEMENTARY R1 | | | | |
| 1 | Z1 | PRESET | | | | | MODEL: | XKC-CV-SB-11-1-1-0 | | | | |
| | | | | | | | SERIAL NUMBER: | WDSN# | | | | |
| | | | | | | | MARK: | CTRLS-1 | | | | |
| | | | | | | | DOC NUMBER: | --- | | | | |
| | | | | | | | REV: | --- | | | | |
| HOOD CONFIGURATION | | | | | | | DEFAULT SETTINGS / PARAMÈTRES PAR DÉFAUT | | | | | |
| HOOD # | HOOD | HOOD MARK | ZONE | EXHAUST | SUPPLY | MB-TEMP SENSORS | HC | FACTORY SETTINGS | | | | |
| 1 | H1 | KH-1 SECTION 1 | Z1 | E1 | S1 | TS1 | NO | TYPE: CV CONFIGURATION: STANDARD | | | | |
| ZONES: 1 | | | | | | | | | | | | |
| HOODS: 1 | | | | | | | | | | | | |
| SUMPS: 0 | | | | | | | | | | | | |
| EXHAUST FANS: 1 | | | | | | | | | | | | |
| SUPPLY FANS: 1 | | | | | | | | | | | | |
| MB ROOM SENSOR: NO | | | | | | | | | | | | |
| MB TEMP SENSORS: 1 | | | | | | | | | | | | |
| HIGH TEMP FAULT: NO | | | | | | | | | | | | |
| FREEZE PROTECTION: YES | | | | | | | | | | | | |
| GAS RESET: NO | | | | | | | | | | | | |
| FAN PROVING: NO | | | | | | | | | | | | |
| BMS: BACNET MSTP | | | | | | | | | | | | |
| ZONE SETTINGS | | | | | | | | | | | | |
| SEE ZONE CONFIGURATION IN TABLE ON LEFT | | | | | | | | | | | | |
| HOOD SETTINGS | | | | | | | | | | | | |
| SEE HOOD CONFIGURATION IN TABLE ON LEFT | | | | | | | | | | | | |
| EXHAUST FAN SETTINGS | | | | | | | | | | | | |
| SEE FAN CONFIGURATION IN TABLE ON LEFT | | | | | | | | | | | | |
| SUPPLY FAN SETTINGS | | | | | | | | | | | | |
| SEE FAN CONFIGURATION IN TABLE ON LEFT | | | | | | | | | | | | |
| SENSOR SETTINGS | | | | | | | | | | | | |
| SEE HOOD CONFIGURATION IN TABLE ON LEFT | | | | | | | | | | | | |
| USER INTERFACE SETTINGS (MB) | | | | | | | | | | | | |
| FAN & LIGHT BUTTONS: SHOW BOTH (SEPERATE) | | | | | | | | | | | | |
| USER INTERFACE SETTINGS (HCB) | | | | | | | | | | | | |
| NA | | | | | | | | | | | | |
| GENERAL SETTINGS | | | | | | | | | | | | |
| TIME ZONE: CENTRAL DAYLIGHT (DEFAULT) | | | | | | | | | | | | |
| FIRE FAULT SETTINGS | | | | | | | | | | | | |
| EXHAUST DURING FIRE: MAX | | | | | | | | | | | | |
| SUPPLY DURING FIRE: OFF | | | | | | | | | | | | |
| LIGHTS DURING FIRE: OFF | | | | | | | | | | | | |
| BMS SETTINGS | | | | | | | | | | | | |
| BAUD RATE: 9600 | | | | | | | | | | | | |
| MAC ADDRESS: 0 | | | | | | | | | | | | |
| MAX MASTER: 127 | | | | | | | | | | | | |
| MAX INFO FRAMES: 20 | | | | | | | | | | | | |
| PRG VERSION: V3 | | | | | | | | | | | | |
| FAN CONFIGURATION | | | | | | | | | | | | |
| FAN # | TYPE | FAN | FAN MARK | ZONE | MIN CFM | MAX CFM | MODBUS VFD | VFD ADDRESS | MIN FREQ | MAX FREQ | MIN VDC | MAX VDC |
| 1 | EXHAUST | E1 | ACCUREX EF | Z1 | - | 2640 | NO | - | - | - | - | 10.0 |
| 2 | SUPPLY | S1 | ACCUREX MAU | Z1 | - | 2376 | NO | - | - | - | - | 10.0 |

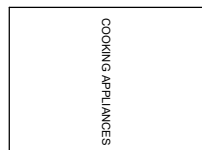
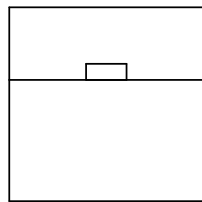
| HOOD INFORMATION | | | | | | | | | | | | | | | | | |
|------------------|------|----------|-----------------------|-------|--------|--------------|----------------------------|-----------|-------------------|--------|------|-----|------|---------|--------|-------------------|------------------|
| HOOD NO. | MARK | MODEL | HOOD DIMENSIONS (IN.) | | | HOOD CONSTR. | COOKING LOAD / DUTY RATING | TOTAL CFM | EXHAUST COLLAR(S) | | | | | SUPPLY | | TOTAL WEIGHT LBS. | SECTION LOCATION |
| | | | LENGTH | WIDTH | HEIGHT | | | | WIDTH | LENGTH | DIA. | CFM | S.P. | MUA CFM | AC CFM | | |
| 1 | CH-1 | XD1-48-S | 48.00 | 48 | 30 | 430 SS 100% | 0 | 600.0 | 10 | 10 | | 600 | 0.09 | | | 144 | SINGLE |

| HOOD INFORMATION | | | | | | | | | | | | | | | | | |
|------------------|------|-------------------------------|-----|--------------|---------------------------|-----|----------------|--------------------|-------------|------|----------|-----------|--|--|--|--|--|
| HOOD NO. | MARK | LIGHTING DETAILS | | | BAFFLE FILTRATION DETAILS | | | UTILITY CABINET(S) | | | | | | | | | |
| | | FIXTURE TYPE BULB / LAMP INFO | QTY | FOOT CANDLES | TYPE / MODEL MATERIAL | QTY | SIZE (IN.) L H | LOCATION | FIRE SYSTEM | | CONTROLS | | | | | | |
| | | | | | | | | | TYPE | SIZE | MODEL | INTERFACE | | | | | |
| 1 | CH-1 | | | | | | | | | | | | | | | | |

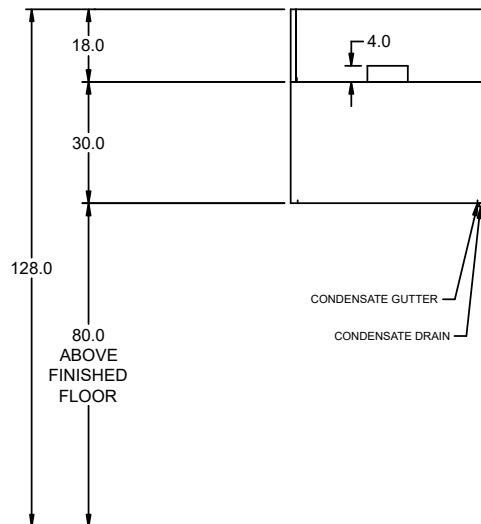
HOOD OPTIONS
 18 IN HIGH CEILING ENCLOSURES - FRONT LEFT RIGHT - FIELD INSTALLED
 FACTORY MOUNTED EXHAUST COLLAR(S)
 MESH FILTER(S) INCLUDED TO COVER DUCT OPENING(S)



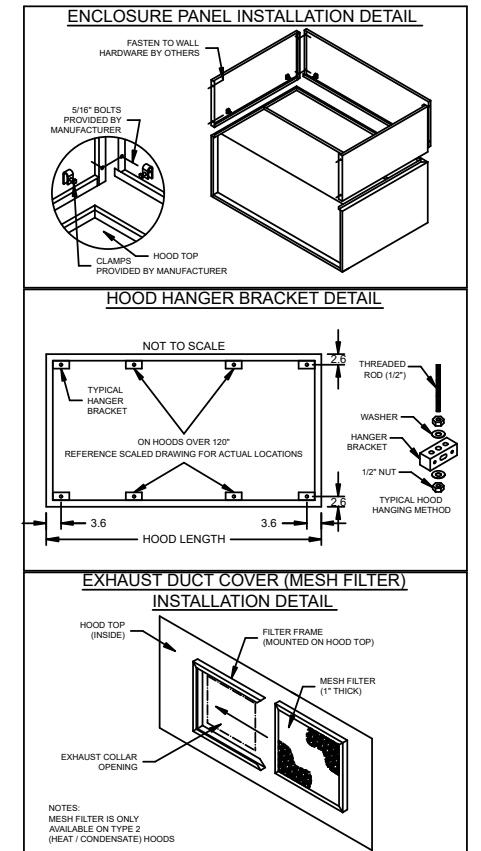
MARK: CH-1 - SECTION 1
 PLAN VIEW



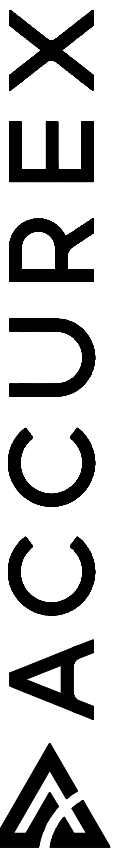
MARK: CH-1 - SECTION 1
 ELEVATION VIEW



MARK: CH-1
 SECTION VIEW



ACCUREX W/IA
 PHILLIP KRAFT
 PHILLIP.KRAFT@ACCUREX.COM
 (262)227-7865



PROJECT 5/21/2021
 MARK
 PARK ELEMENTARY R1

CH-1

