



6225 Emerald Parkway • Dublin, Ohio 43016 • Office 614.408.3862 • VMPEngineering.com

Shop Drawing Submittal Comments

Project Name: Kirkmont Church
Project Number: 23059
Submittal Name: Fans

Date: Review #1: 2024-03-11
Review #2:
Review #3: - (Additional Service Fee Required)

THIS REVIEW IS FOR GENERAL COMPLIANCE WITH CONTRACT DOCUMENTS. VMP ENGINEERING DOES NOT ASSUME RESPONSIBILITY FOR THE CORRECTNESS OF SUBMITTED INFORMATION RELATED TO CONTRACT DOCUMENTS.

CONTRACTOR IS STILL RESPONSIBLE FOR ALL DETAILS, DIMENSIONS, FIELD CONDITIONS, COORDINATION WITH OTHER TRADES, ETC FOR THE COMPLETE INSTALLATION PER INTENT OF THE CONTRACT DOCUMENTS.

NO EXCEPTIONS TAKEN

MAKE CORRECTIONS NOTED **X**

AMEND & RESUBMIT

REJECTED

REVIEWED BY: **DS**

COMMENTS:

- 1. EF-1 to operate during "Occupied Hours", color by Architect. **White**
- 2. EF-2 to operate 24/7.

Review of this submittal is for conformance with information contained in the contract documents. Submitter shall verify and be responsible for all dimensions related to field conditions, coordination of same with this submission, quantities, fabrication, and installation. Review does not authorize changes in contract unless stated by letter from Architect.

Reviewed Resubmit Reviewed as noted

By: chrisk 03/11/2024
M+A Architects



SUBMITTAL TITLE SHEET

PROJECT TITLE:

KIRKMONT CHURCH ADDITION

SUBMITTAL TYPE:

PRODUCT DATA

SECTION SUBMITTAL NUMBER:

23.34.20

SECTION TITLE:

Fans

DATE PREPARED:

2/27/2024

CONTRACTOR OF RECORD:

**Ridge Stone General Contractors, LTD
7015 Lighthouse Way #500
Perrysburg, OH 43551
Office: 419-874-8847
Project Manager: Rod Nofziger
PM email: rod@ridgestonebuilders.com**

SECTION SUBCONTRACTOR:

**Mechanical Optimizers, Inc.
2145 Patterson Street
Cincinnati, OH 45214
Office: (513)-467-1444 – Cell: (859) 380-0212
Project Manager: Brian Wayson
PM email: bwayson@mechopt.com**



COOK

SUBMITTAL

PROJECT: KIRKMONT CHURCH

CONTRACTOR: Mechanical Optimizers

SUBMITTED BY: Steve Forbeck
Controlled Air Inc
12009 Tramway Drive
Cincinnati, OH 4241

PHONE: 513-981-2734
E-MAIL: steve@controlled-air.com

DATE: 3/1/2024

LOREN COOK COMPANY



Corporate Offices: 2015 E. Dale Street, Springfield, MO 65803 • P.O. Box 4047, Springfield, MO 65808
417.869.6474 • fax 417.869.2520
lorencook.com



COOK



MARK: EF-1

PROJECT: KIRKMONT CHURCH

DATE: 3/1/2024

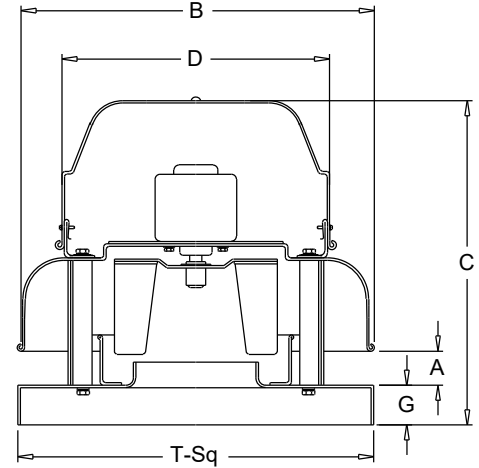
ACED-EC

**Downblast Centrifugal Exhaust Ventilator
Roof Mounted/Direct Drive**

Electronically Commutated Vari-Flow® Motor

STANDARD CONSTRUCTION FEATURES:

All aluminum housing - Backward inclined all aluminum wheel - Two piece top cap with stainless steel quick release latches (sizes 101 - 135) - Welded curb cap corners - Birdscreen - Permanently lubricated ball bearing electronically commutated motor - Power rated in Input Watts - Corrosion resistant fasteners - Transit tested packaging.



Performance

Qty	Catalog Number	Flow (CFM)	SP (inwc)	Fan RPM	Input Watts	FEG	Speed Control
1	100C17DEC	450	.500	1498	91	n/a(<1HP)	EC

Altitude (ft): 1004 Temperature (F): 70

Motor Information

HP	RPM	Volts/Ph/Hz	Enclosure
1/4	1725	115/1/60	OPEN -EC



Motor is electronically/thermally protected.

Sound Data Inlet Sound Power by Octave Band

1	2	3	4	5	6	7	8	LwA	dBA	Sones
64	75	73	62	57	51	46	41	67	56	7.7

- Distance from Sound source 5 ft

Accessories:

- FAN MOUNTED SPEED CONTROL
- DISCONNECT NEMA 1
- BD-12 DAMPER
- ROOF CURB RCG 16 13.5H -C+T+N
- LORENIZED-SPEC.COLOR-(? (TO BE DETERMINED))

Dimensions (inches)

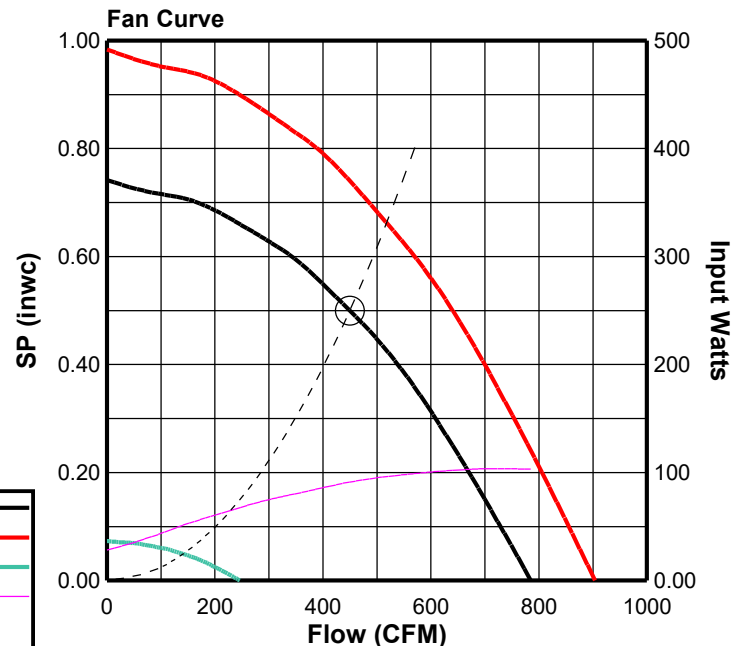
A	2-1/2
B O.D.	18-3/4
C	16-13/16
D O.D.	16-3/4
G	2
T Sq.	18
Roof Open. Sq.*	13-1/2

NOTE: Accessories may affect dimensions shown.

Weight(lbs)***	Shipping	60	Unit	52
----------------	----------	----	------	----

* Roof opening size for curbs supplied by Cook only.

***Includes fan, motor & accessories.





COOK



MARK: EF-1

PROJECT: KIRKMONT CHURCH

DATE: 3/1/2024

ACED-EC

Performance

Catalog Number	Flow (CFM)	SP (inwc)	Fan RPM	Input Watts	FEG	OVEL (fpm)	TSPD (fpm)	SE	Temp (°F)	ALT (ft)
100C17DEC	450	.500	1498	91	n/a(<1HP)	525	3921	36%	70	1004

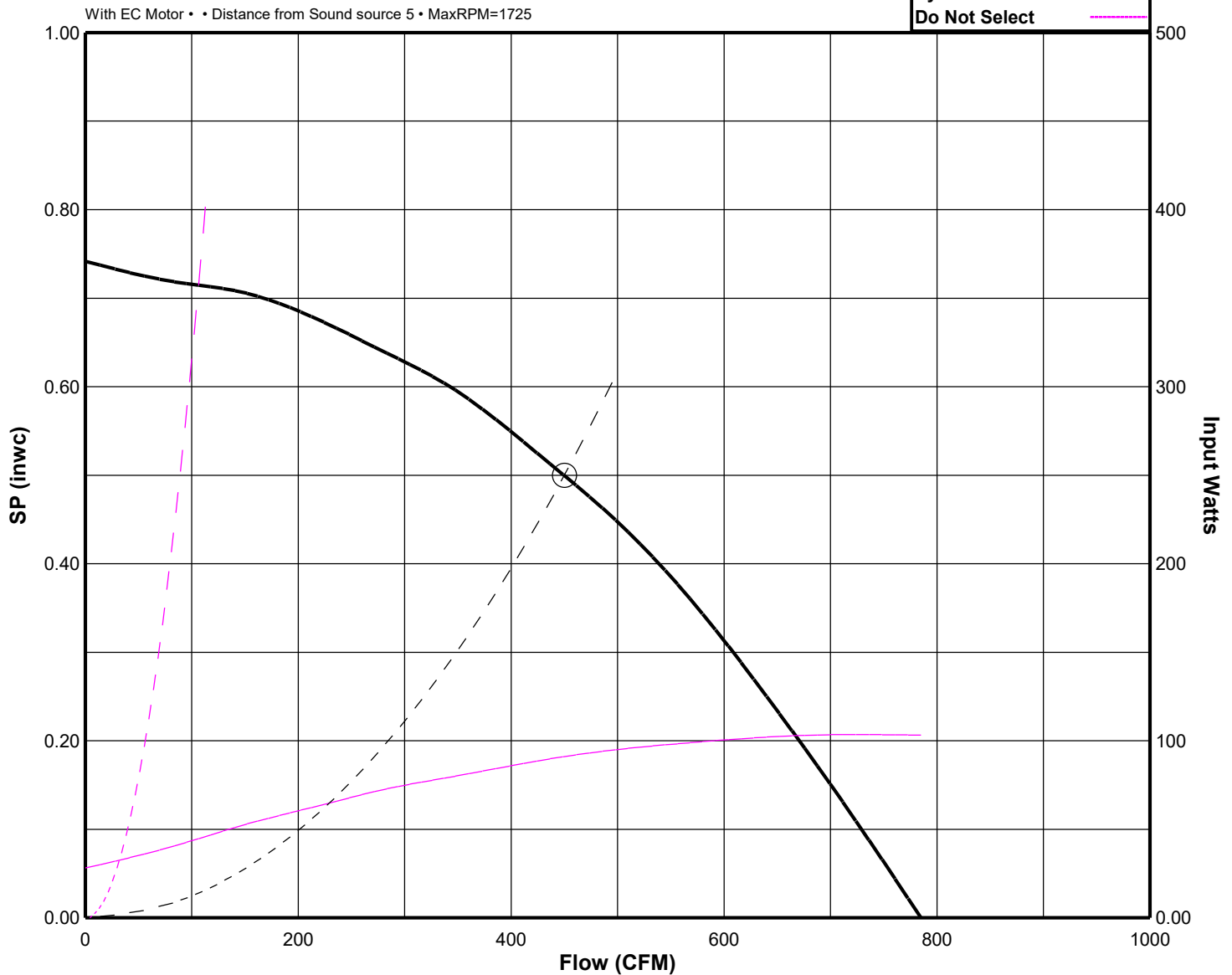
Motor Information

HP	RPM	Volts/Ph/Hz	Enclosure
1/4	1725	115/1/60	OPEN -EC

Motor is electronically/thermally protected.

Fan Curve Legend

CFM vs SP	—
CFM vs Watts	—
Point of Operation	○
System Curve	- - -
Do Not Select	—





COOK



MARK: EF-2
PROJECT: KIRK MONT CHURCH
DATE: 3/1/2024

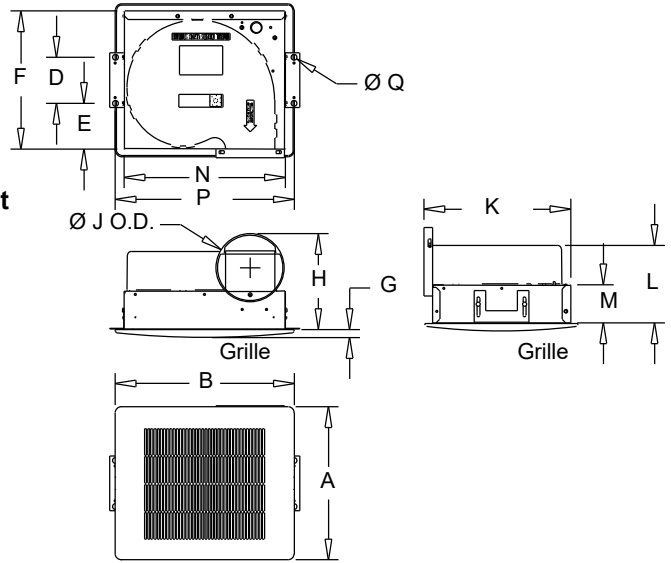
GEMINI

Ceiling Fans

100 Series

STANDARD CONSTRUCTION FEATURES:

Forward curved injection molded polypropylene fan wheel - Injection molded flame resistant fan housing with round outlet duct - 22 ga. galvanized steel inlet box - Isolation mounted motor, mounted to one piece galvanized stamped steel integral motor mount/inlet - Permanently lubricated 2-speed motor with built-in thermal overload protection and disconnect plug - Field wiring compartment with receptacle - Adjustable prepunched mounting bracket - White, high impact styrene injection molded grille - Shipped in ISTA certified transit tested packaging.



Performance

Qty	Catalog Number	Flow (CFM)	SP (inwc)	Nominal RPM	Input Watts	Speed Control
1	GC-148	50	.500	847	31	FSC

Altitude (ft): 1004 Temperature (F): 70

Motor Information

Volts/Ph/Hz	Nameplate Amps
115/1/60	.417

Sound Data Inlet Sound Power by Octave Band

1	2	3	4	5	6	7	8	LwA	dBA	Sones
51	53	55	48	45	40	36	32	51	40	1.5

- Distance from Sound source 5 ft

Accessories:

- WHITE ALUM GRILLE
- FAN SPEED CONTROLLER 5 AMP 120 VOLT
- INTEGRAL BD DAMPER
- GEMINI ISOLATOR KIT - ISOLATORS

Dimensions (inches)

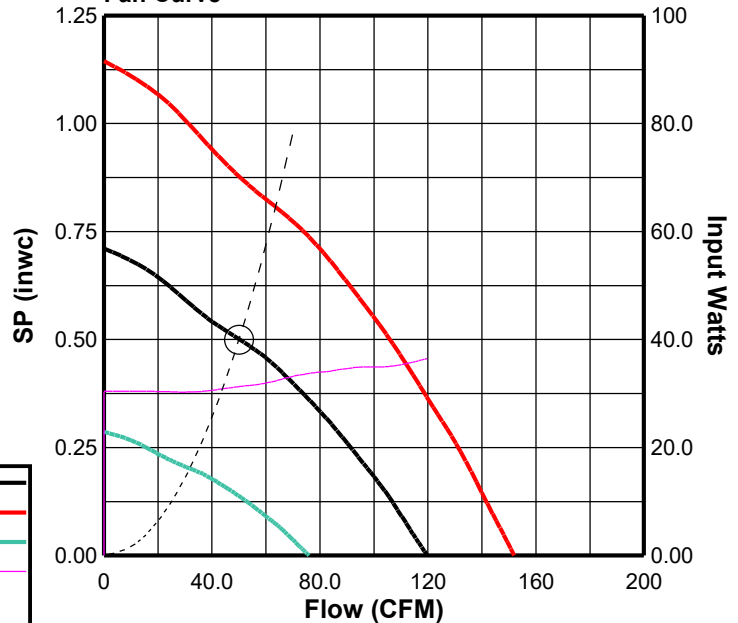
A Aluminum	13-3/4
B Aluminum	15-1/2
D	4
E	4
F	12
G	5/8
H	8-3/8
J O.D.	5-15/16
K	12-3/4
L	6-11/16
M	3-1/4
N	14
P	15-1/2
Q	1/2

NOTE: Accessories may affect dimensions shown.

Weight(lbs)***	Shipping	19	Unit	16
-----------------------	-----------------	-----------	-------------	-----------

***Includes fan, motor & accessories.

Fan Curve



Fan Curve Legend

CFM vs SP (847)	—
100% FSC (1075)	—
Min FSC (537.5)	—
CFM vs Watts	—
Point of Operation	○
System Curve	- - -



COOK



MARK: EF-2

PROJECT: KIRKMONT CHURCH

DATE: 3/1/2024

GEMINI

Performance

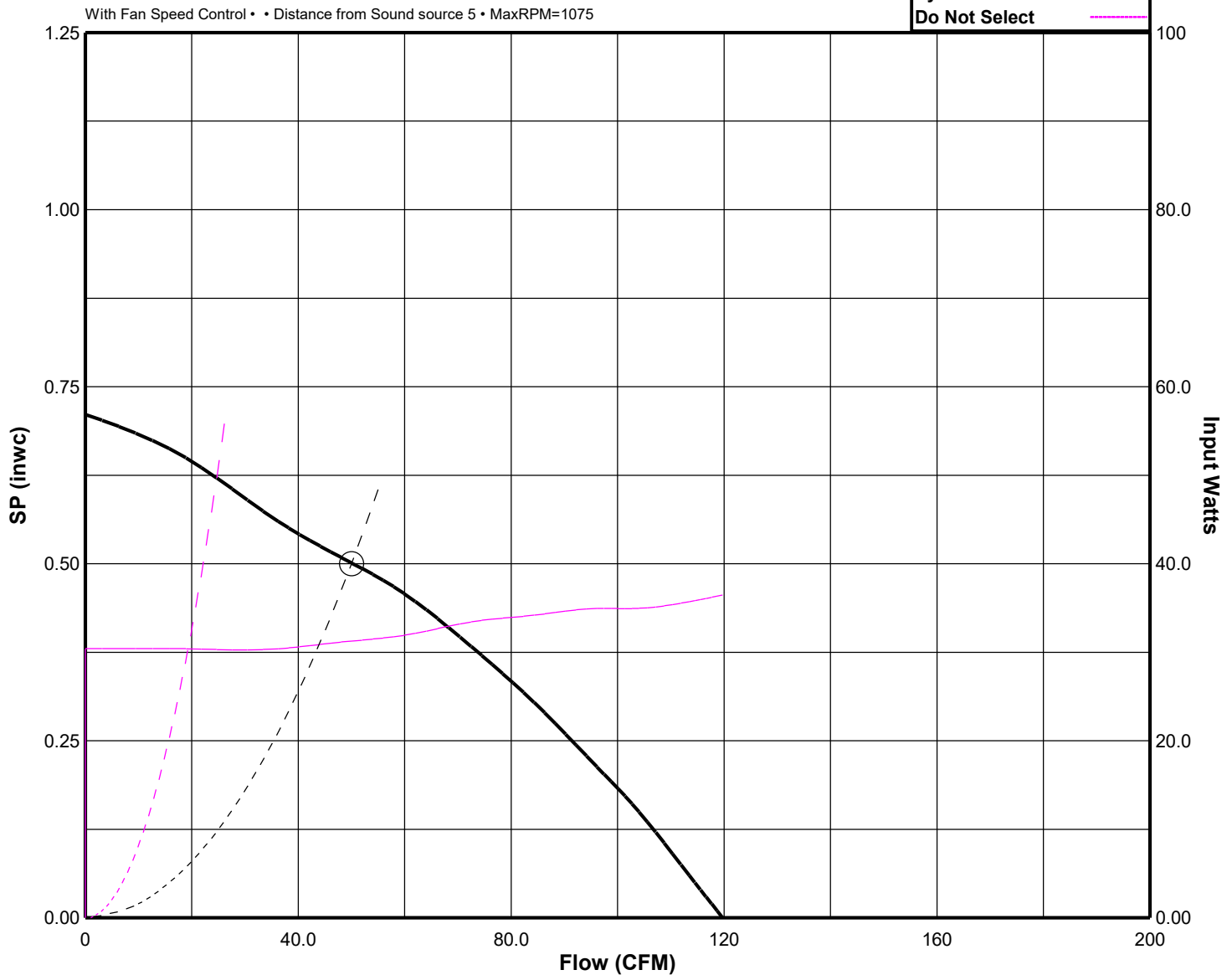
Catalog Number	Flow (CFM)	SP (inwc)	Nominal RPM	Input Watts	OVEL (fpm)	TSPD (fpm)	SE	Temp (°F)	ALT (ft)
GC-148	50	.500	847	31	255	1691	31%	70	1004

Motor Information

Volts/Ph/Hz	Nameplate Amps
115/1/60	.417

Fan Curve Legend

CFM vs SP	—
CFM vs Watts	—
Point of Operation	○
System Curve	- - -
Do Not Select	---





COOK

PROJECT: KIRKMONT CHURCH

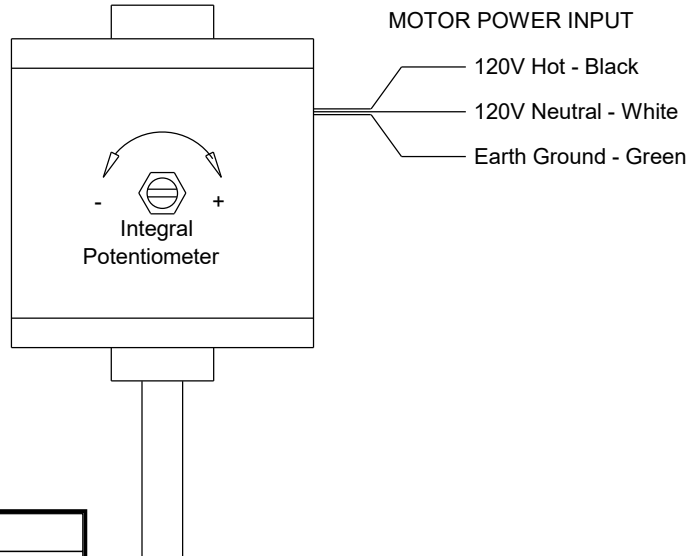
DATE: 3/1/2024

Speed Control

Internal Speed Control
Electronically Commutated (EC) Motor
Type M

STANDARD CONSTRUCTION FEATURES:

Integral potentiometer with slotted screw for speed adjustment.



Dimensions (inches)

Mark	Qty	Description
EF-1	1	OPEN -1/4HP - 115V/1 PH/ 60 1725/0000 -EC



COOK

PROJECT: KIRKMONT CHURCH

DATE: 3/1/2024

BD

Gravity Backdraft Damper

STANDARD CONSTRUCTION FEATURES:

.020 Aluminum blades - .060 aluminum frame -
Aluminum hinge pins - Nylon bushings.

Notes:

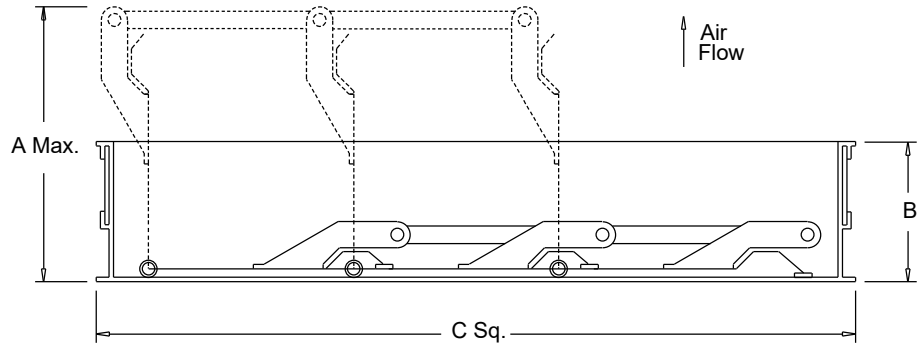
Max. operating temperature 200 Deg F (95 Deg C).

Max. discharge velocity 2000 fpm.

Sizes 36 thru 60 are shipped as 2 panels.

Sizes 66 and 78 are shipped as 6 panels.

These may require assembly.



Dimensions (inches)

Mark	Qty	Description	A Max.	B	C Sq.	# Panels
EF-1	1	BD-12 DAMPER	5-3/16	1-7/8	11-3/4	1



RCG

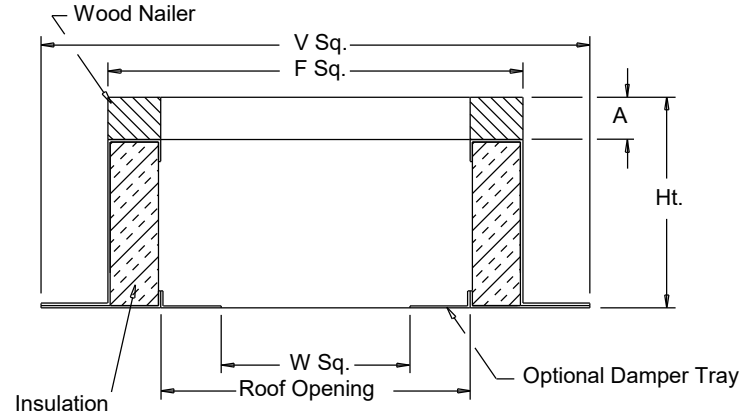
Galvanized Steel Roof Curb

STANDARD CONSTRUCTION FEATURES:

18 gauge galvanized steel - 1-1/2",
3 lbs. density thermal and acoustical
insulation - Continuously welded corners -
Wood nailer.

Options:(As noted below*)

- 1) No wood nailer (deduct 1-1/2" for actual height).
- 2) Damper tray.
- 3) Liner.
- 4) Gasket on wood nailer.
- 5) Lorenized coating.
- 6) Enamel coating.
- 7) Burglar bars.



Dimensions (inches)

Mark	Qty	Description	Ht	Options*	A	F Sq.	V Sq.	W Sq.	Roof Opening
EF-1	1	RCG 16	13.5	2;	1-1/2	16-1/2	20-1/2	9-3/4	13-1/2



COOK

PROJECT: KIRK MONT CHURCH

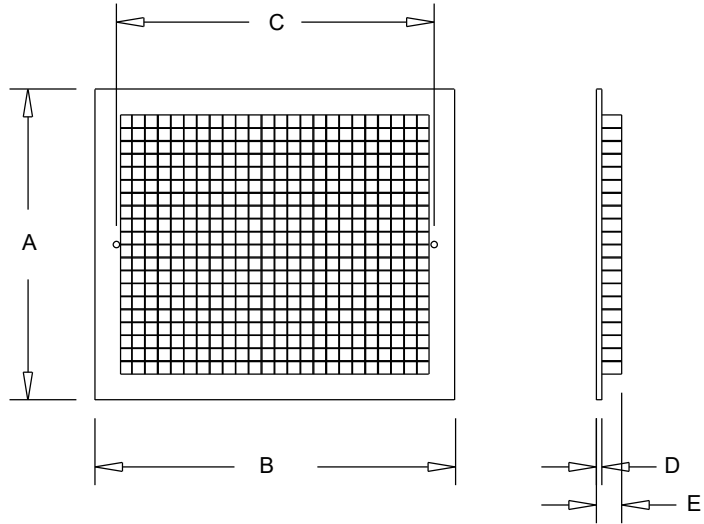
DATE: 3/1/2024

GEMINI

ALUMINUM GRILLE

NOTE:

Aluminum Grill requires special unit mounting considerations to ensure clearance between motor and grill on 160 and 180 series only. Consult IOM prior to installation for additional details.



Dimensions (inches)

Mark	Qty	Description	A	B	C	D	E
EF-2	1	WHITE ALUM GRILLE	12-3/4	14-3/4	13	1/4	1-1/16



FSC

Fan Speed Controls

STANDARD CONSTRUCTION FEATURES:

PRODUCT DESCRIPTION - Through the "Quadrac" integrated semi-conductor device it is now possible to offer this system with many advantages. Fewer semi-conductor parts mean greater reliability and the passivation process used in the manufacture of the semi-conductor insures long life.

Printed circuit construction eliminates wiring difficulties and guarantees workmanship.

All of these factors serve to offer the most important of all features - quality.

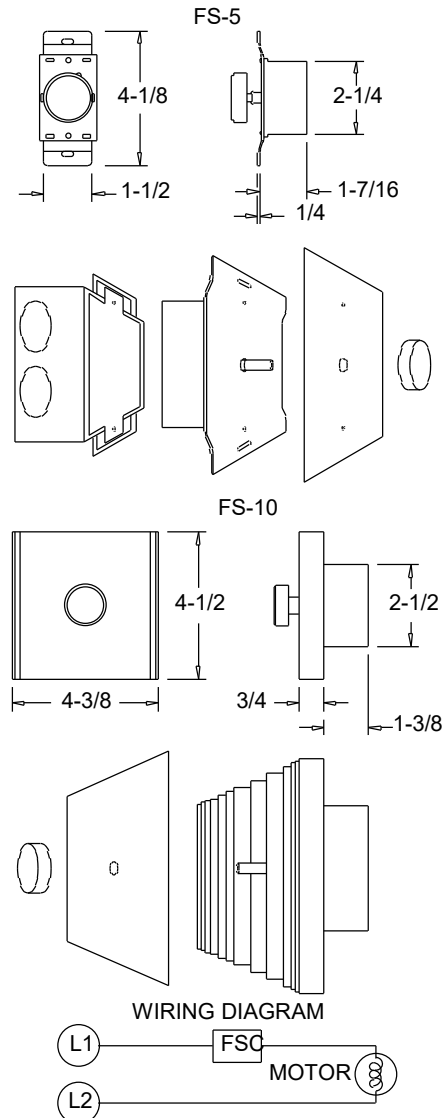
SPEED CONTROL - Positive Off/On action in the control dial. Speed range set to the customer's requirements. **CONTROL RATING** - 120 volts, 60 cycles, 1 phase. Maximum ambient temperature - 120 degree F (5 AMP, 10 AMP, 15 AMP). 220/240 volt, 50/60 cycles, 1 phase. Maximum ambient temperature - 120 degree F (5 AMP, 10 AMP). 220/240 volt model not UL listed. Fan cannot have UL listing if furnished with prewired 220/240 volt FSC. 277 volt, 60 cycles, 1 phase.

Maximum ambient temperature - 120 degree F (5 AMP). **WARNING** - Power must be turned off before installing this unit. **STANDARD INSTALLATION** - Fits any standard single gang box.

Turn off power and connect the two wires on the control to the two switch wires in the usual manner. The connection box is not supplied. **SPECIAL FEATURES** - Complete range control, solid state "Quadrac" integrated circuitry, solid state construction for long reliable operating life, saves on electric bills.

Dimensions (inches)

Mark	Qty	Description
EF-2	1	FSC 5 AMP 120 VOLT





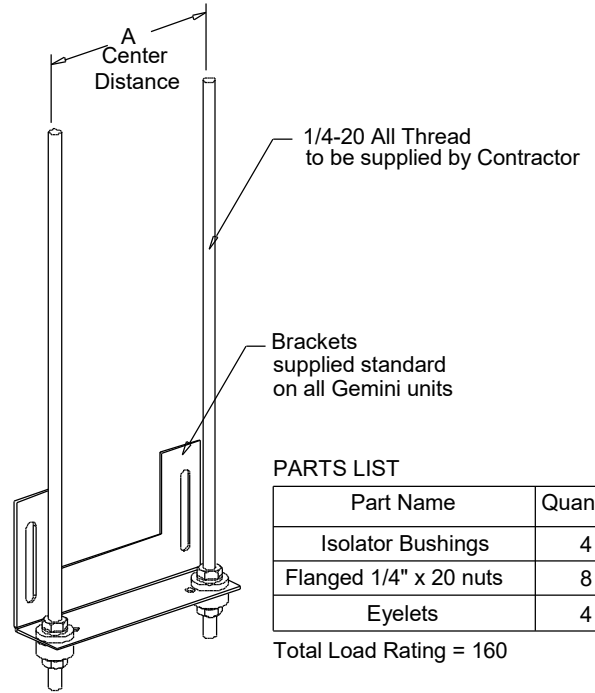
COOK

PROJECT: KIRK MONT CHURCH

DATE: 3/1/2024

GEMINI

**Gemini Isolator Kit
GIK
Rubber In Shear**



PARTS LIST

Part Name	Quantity
Isolator Bushings	4
Flanged 1/4" x 20 nuts	8
Eyelets	4

Total Load Rating = 160

Dimensions (inches)

Mark	Qty	Description	Part #	A
EF-2	1	GEMINI ISOLATO	GIK	4



COOK

MARK: EF-2

PROJECT: KIRKMONT CHURCH

DATE: 3/1/2024

Limited Warranty

Loren Cook Company warrants that your Loren Cook fan was manufactured free of defects in materials and workmanship, to the extent stated herein. For a period of one (1) year after date of shipment, we will replace any parts found to be defective without charge, except for shipping costs which will be paid by you.

This warranty is granted only to the original purchaser placing the fan in service.

This warranty is void if the fan or any part thereof has been altered or modified from its original design or has been abused, misused, damaged or is in worn condition or if the fan has been used other than for the uses described in the company manual. This warranty does not cover defects resulting from normal wear and tear.

To make a warranty claim, notify Loren Cook Company, General Offices, 2015 East Dale Street, Springfield, Missouri 65803-4637, explaining in writing, in detail, your complaint and referring to the specific model and serial numbers of your fan. Upon receipt by Loren Cook Company of your written complaint, you will be notified, within thirty (30) days of our receipt of your complaint, in writing, as to the manner in which your claim will be handled. If you are entitled to warranty relief, a warranty adjustment will be completed within sixty (60) business days of the receipt of your written complaint by Loren Cook Company.

This warranty gives only the original purchaser placing the fan in service specifically the right. You may have other legal rights which vary from state to state.

For fans provided with motors, the motor manufacturer warrants motors for a designated period stated in the manufacturer's warranty. Warranty periods vary from manufacturer to manufacturer. Should motors furnished by Loren Cook Company prove defective during the designated period, they should be returned to the nearest authorized motor service station. Loren Cook Company will not be responsible for any removal or installation costs.