

Report By:

National TAB  
1329 E. KEMPER ROAD  
SUITE 4210  
CINCINNATI, OH 45246



**Report: TAB REPORT**  
**Function: Test, Adjust, & Balance**  
**Date: 06/27/2024**

**PROJECT**  
**06-24-24 DOMINICKS SCOTTSDALE, AZ**

15169 N Scottsdale Rd

Scottsdale, AZ 85254

Client

Prime Steak Concepts

# National TAB

Project: 06-24-24 DOMINICKS SCOTTSDALE, AZ

## Table Of Contents

<b>Section</b>	<b>Page #</b>
Summary	3
Issue Data	6
Checklist Data	19
AHU/RTU	42
FAN - Exhaust	55
FAN - Supply	58
Kitchen Hood Type I	59
Kitchen Hood Type II	61
GRD Layout	62



## Summary – Phase I

The Purpose of the visit to Dominick’s Steakhouse in Scottsdale, AZ was to take preliminary airflow measurements of the HVAC, exhaust, and kitchen ventilation systems. Mechanical Drawings were provided, but significant deviations exist between the plans and actual system installation. After the summary, contents of the report include pictures, asset pages with test data, and then the marked up floor plan. Specific notes are in the tables below for each unit regarding the condition of the equipment. The general notes below pertain to overall condition or status of the HVAC System. The issue section describes areas of specific concern in more detail. Contact Will Turnbough w/ National TAB for any further questions: will@nationaltab.com 314-954-6244

### General Notes

1. All WSHP/RTUs are operating in Fan Auto and managed by controls company (AZ Control Specialists). Typically, supply fans run continuously during occupied hours (when hood exhaust is operational) to maintain building pressurization.
2. Kitchen Exhaust Hoods (HD-1 and HD-2) are not controlled by Hood Switch. Respective fans (KEF-1 and MAU) appear to run 24/7, only controlled by roof disconnect.
3. Dishwasher exhaust (HD-3) and its respective fan is not operating. The fan is functional but has no controls in the space below and can only be operated by roof disconnect.
4. Return Grills Serving WSHPs and RTUS were found dirty, recommend they are cleaned.
5. Access to interior WSHPs is very limited. On those ducted for Outside air, the manual OA damper is not, or not easily, accessible.
6. Several multispeed WSHPs are low on airflow; ductwork and units themselves not easily accessible. We were unable to verify filter condition or speed setpoint on several of these units.
7. WSHP-1 and WSHP-2 returns are all centrally located creating a significant draft to their location (beverage preparation area-Liquor Storage) when they are operational.
8. The Wine room is served by several units. Due to limited access, unable to determine exact routing of installed WSHP / Chillers. Per controls company / facilities tech, there is a red wine chiller, white wine chiller, and a large and a small WSHP. It only appeared one WSHP (WSHP-5) was ducted to the supply diffusers in dining space. Other units appeared ducted into wine chiller racks.
9. Un-ducted WSHP installed above walk-in cooler in liquor storage. Unit has power, but was not observed to be operating and was not listed as visible by controls company.

### Unit Specific Notes:

\*\*\*WSHPs and RTUS should typically perform at 350-400 cfm/ton for performance and efficiency.

### RTUs /WSHPs

Unit	Area Served	Tons	CFM/Ton	Notes
WSHP-1	UPPER DINING	20	268	Located on Roof, coil / blower wheel in need of cleaning. Manual OA inlet fully closed.

				Dining room diffusers feed wall plenum-see issue.
WSHP-2	BAR	20	334	Located on Roof, coil / blower wheel in need of cleaning. Manual OA inlet fully closed.
WSHP-3	2 <sup>nd</sup> Floor Private Dining	3	458	Located in neighboring tenant space. Return pulls from ceiling plenum in that space.
WSHP-4	Front kitchen	5	365	Return Filter found clogged initially. Not Listed on original plans.
WSHP-5	Wine Room	3	480	Very limited access, unclear on exact duct routing as wine chillers are also mounted above this space. Possibly Served by second WSHP. Controls company listed Small and Large Wine units, only one appeared ducted to diffusers in space.
WSHP-6	South Dining	3	407	Not listed on original plans.
WSHP-7	Private Dining	3	266	
WSHP-8	Lobby / RR	5	320	
WSHP-9	Rear Kitchen	5	339	Missing Electrical Panel Cover / Unit Label
WSHP-10	South Dining Host Wall	?	831 total cfm	Unable to access unit to determine model / tonnage. Not listed on original Plans.
RTU-1	Stairwell	3	385	Return Filters found dirty, removed for testing. Recommend replacement.
RTU-2	Pool South	5	462	Cooling not operational at time of Visit. Service company called. Discharges through 3 grilles, air not distributed.
RTU-3	Pool North	5	454	Discharges through 3 grilles, air not distributed.

#### Exhaust Fans / MAU

Unit	Area Served	CFM	Notes
KEF-1	HD-1 and HD-2	7,214	No control in space. Fan appears to operate 24/7. Only Roof disconnect controls operation.
KEF-2	HD-3	1026	Not operating. No controls in space. Only Roof Disconnect controls. Powered on to measure, left off at disconnect.
Common Building Exhaust	Restrooms / Beverage Area	0	Fan does not appear operational. Recommend



			consulting Building management.
MAU	HD-1 and HD-2	4617	No Control in space. Fan appears to operate 24/7. Roof Disconnect controls operation.

**Specific Areas of Concern:**

**1. Office Space:**

The managers office is located at the top of a stairwell located in the rear of the kitchen. The space is fully enclosed in hard ceiling and walls. There are no pass-throughs or ventilation save two small supply grilles ducted from WSHP-4, which serves the kitchen space diagonally below. These grilles supply 401 cfm to the office space. A portable AC unit is also installed in the office and is exhausting its heat into the ceiling plenum of the kitchen below. The stereo system and other computers / electronics systems located in the office generate a significant amount of heat. Adding a transfer fan, or ducting returns to this office (if possible), could help alleviate some of the comfort issues it experiences. As is, the heat in the office has nowhere to go. The portable AC unit is only moving heat from the office, into the kitchen space, which is then being supplied back into the office through WSHP-4.

**2. Pool Room:**

The pool dining room / bar was not listed on the original plans. This space struggles to achieve a comfortable temperature during hot days and is sometimes closed for dining on particularly hot days. The space has a shallow reflecting pool positioned in the center of the room as well as a removable roof. It does not appear insulated or sealed sufficiently from the exterior environment. Two 5-ton Carrier RTUs serve the space through 3 grilles each, discharging from a supply drop box at one end of the pool. There are also numerous split systems mounted on the walls. A rear dining room on the pool level is served by WSHP-3, which is located in and pulls air from the neighboring tenant's space. This unit appears to be operating sufficiently. The two carrier RTUS were found to be high on airflow, operating at or above 450 cfm/ton. We recommend these units are slowed to sufficiently cool the air. The South Pool RTU (RTU-2) was not operating cooling during our visit and a service call was made.

## Issue List

- General Exhaust: Not Operational
- KEF-1: Controls - Always Operational
- KEF-2 Dish Exhaust: Controls - Not Operational
- Office Comfort: Portable AC Unit
- RTU-1: Power Conduit Damaged
- RTU-2 & 3: Economizer Not Functional
- RTU-2: Cooling Not Operational
- RTU-3: Pool RTU Fan Pulley Cracked
- Wine Chiller: Condensate on Glass Chiller room Wall.
- WSHP-1: Dining Diffusers Supply Wall Plenum
- WSHP-4: Kitchen- Return Filter found Clogged
- WSHP-9: Electrical Compartment Cover Missing



**06-24-24 DOMINICKS SCOTTSDALE, AZ**

**Project Issue Information**

**Issue Name :** General Exhaust: Not Operational  
**Description :** Restroom exhaust and common building exhaust is not operational. Per facility tech, the general exhaust is served by a common building fan. No airflow was measured at any exhaust grilles during our visit. Recommend contacting appropriate building management to verify fan is operational.

**Created By :** National TAB                      **Assigned To :** National TAB - Michael McDonnell

**Status :** Open

**Priority :** Medium                                      **Asset Tag :**

**Originated Date :** 07/26/2024 - Michael McDonnell - National TAB



**06-24-24 DOMINICKS SCOTTSDALE, AZ**

**Project Issue Information**

**Issue Name :** KEF-1: Controls - Always Operational  
**Description :** Hood controls in kitchen space do not control KEF-1. Kitchen exhaust hoods appear to run 24/7. This is unnecessarily exhausting treated air from space when cooling is not occurring. Only roof disconnect powers off fan. Recommend controls are inspected/corrected.  
**Created By :** National TAB                      **Assigned To :** National TAB - Michael McDonnell  
**Status :** Open  
**Priority :** Medium                                      **Asset Tag :**  
**Originated Date :** 07/25/2024 - Michael McDonnell - National TAB

Project Issue File Details



07/25/2024



07/25/2024



07/25/2024



**06-24-24 DOMINICKS SCOTTSDALE, AZ**

**Project Issue Information**

**Issue Name :** KEF-2 Dish Exhaust: Controls - Not Operational  
**Description :** HD-3, Dishwasher hood, is served by KEF-2. Fan is functional but is not operating. Hood Switch does not control fan. Left off at roof, recommend controls installed.

**Created By :** National TAB                      **Assigned To :** National TAB - Michael McDonnell

**Status :** Open  
**Priority :** Medium                                      **Asset Tag :**

**Originated Date :** 07/25/2024 - Michael McDonnell - National TAB

Project Issue File Details



07/25/2024



07/25/2024



**06-24-24 DOMINICKS SCOTTSDALE, AZ**

**Project Issue Information**

**Issue Name :** Office Comfort: Portable AC Unit  
**Description :** Managers office running portable AC unit due to hot conditions in the office. Portable AC unit is exhausting hot air into kitchen space below.  
**Created By :** National TAB                      **Assigned To :** National TAB - Michael McDonnell  
**Status :** Open  
**Priority :** InfoOnly                              **Asset Tag :**  
**Originated Date :** 07/26/2024 - Michael McDonnell - National TAB

Project Issue File Details



07/26/2024



**06-24-24 DOMINICKS SCOTTSDALE, AZ**

**Project Issue Information**

**Issue Name :** RTU-1: Power Conduit Damaged  
**Description :** Power conduit running from the roof to RTU-1 is damaged and wiring is exposed to the elements. Recommend conduit is repaired.  
**Created By :** National TAB                      **Assigned To :** National TAB - Michael McDonnell  
**Status :** Open  
**Priority :** Medium                                      **Asset Tag :**  
**Originated Date :** 07/25/2024 - Michael McDonnell - National TAB

Project Issue File Details



07/25/2024



07/25/2024



**06-24-24 DOMINICKS SCOTTSDALE, AZ**

**Project Issue Information**

**Issue Name :** RTU-2 & 3: Economizer Not Functional  
**Description :** Economizers do not appear functional on RTUs serving pool dining (2&3).  
**Created By :** National TAB                      **Assigned To :** National TAB - Brianna Biggs  
**Status :** Open  
**Priority :** Medium                                      **Asset Tag :**  
**Originated Date :** 07/26/2024 - Michael McDonnell - National TAB

Project Issue File Details



07/26/2024



07/26/2024



**06-24-24 DOMINICKS SCOTTSDALE, AZ**

**Project Issue Information**

**Issue Name :** RTU-2: Cooling Not Operational  
**Description :** Cooling not Operational at time of visit. Service call was made and technician on site at conclusion of visit.  
**Created By :** National TAB                      **Assigned To :** National TAB - Michael McDonnell  
**Status :** Open  
**Priority :** High                                      **Asset Tag :**  
**Originated Date :** 07/26/2024 - Michael McDonnell - National TAB

Project Issue File Details



07/26/2024



07/26/2024



**06-24-24 DOMINICKS SCOTTSDALE, AZ**

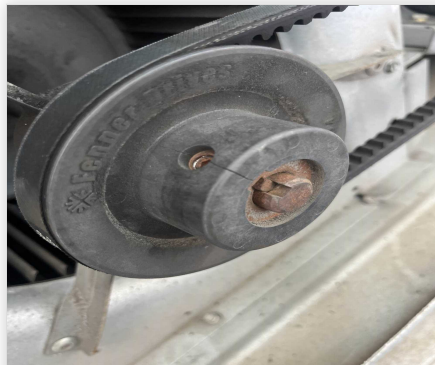
**Project Issue Information**

**Issue Name :** RTU-3: Pool RTU Fan Pulley Cracked  
**Description :** Plastic fan pulleys installed on Pool RTUs appear damaged. RTU-3 pulley has significant crack developing. Recommend replacement.  
**Created By :** National TAB                      **Assigned To :** National TAB - Michael McDonnell  
**Status :** Open  
**Priority :** High                                      **Asset Tag :**  
**Originated Date :** 07/26/2024 - Michael McDonnell - National TAB

Project Issue File Details



07/26/2024



07/26/2024

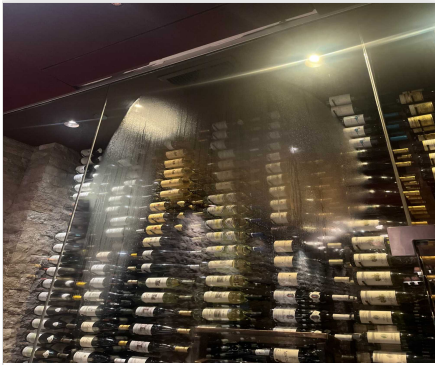


**06-24-24 DOMINICKS SCOTTSDALE, AZ**

**Project Issue Information**

**Issue Name :** Wine Chiller: Condensate on Glass Chiller room Wall.  
**Description :** Condensate forming on wine chiller wall. Recommend unit setpoint is verified and unit is serviced. Not accessible by NTAB tech.  
**Created By :** National TAB                      **Assigned To :** National TAB - Michael McDonnell  
**Status :** Open  
**Priority :** Medium                                      **Asset Tag :**  
**Originated Date :** 07/26/2024 - Michael McDonnell - National TAB

Project Issue File Details



07/26/2024

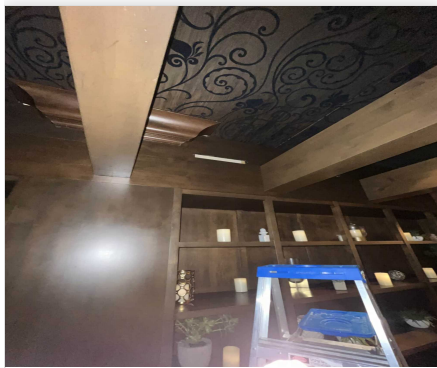


**06-24-24 DOMINICKS SCOTTSDALE, AZ**

**Project Issue Information**

**Issue Name :** WSHP-1: Dining Diffusers Supply Wall Plenum  
**Description :** Dining room supply grilles mounted on wall in upper dining room supply the wall plenum, which then has grille sized cutouts to allow airflow. Inefficient delivery of supply airflow.  
**Created By :** National TAB                      **Assigned To :** National TAB - Michael McDonnell  
**Status :** Open  
**Priority :** Medium                                      **Asset Tag :**  
**Originated Date :** 07/26/2024 - Michael McDonnell - National TAB

Project Issue File Details



07/26/2024



07/26/2024



07/26/2024



**06-24-24 DOMINICKS SCOTTSDALE, AZ**

**Project Issue Information**

**Issue Name :** WSHP-4: Kitchen- Return Filter found Clogged  
**Description :** Return filter installed in WSHP-4 was found extremely dirty and clogged. When filter was replaced, airflow increased from 1100cfm to 1823. Recommend filter on this system is changed more frequently due to location (kitchen) to maintain consistent cfm from WSHP.  
**Created By :** National TAB                      **Assigned To :** National TAB - Michael McDonnell  
**Status :** Open  
**Priority :** InfoOnly                              **Asset Tag :**  
**Originated Date :** 07/26/2024 - Michael McDonnell - National TAB

Project Issue File Details



07/26/2024



**06-24-24 DOMINICKS SCOTTSDALE, AZ**

**Project Issue Information**

**Issue Name :** WSHP-9: Electrical Compartment Cover Missing  
**Description :** Unit cover for the electrical/control compartment is missing. Could not be located, recommend it's installed.  
**Created By :** National TAB                      **Assigned To :** National TAB - Michael McDonnell  
**Status :** Open  
**Priority :** Low                                      **Asset Tag :**  
**Originated Date :** 07/26/2024 - Michael McDonnell - National TAB

Project Issue File Details



07/26/2024

## CheckList List

- TECH - SITE PICTURES
- TECH - STEP 1: INITIAL SITE WALKTHROUGH
- TECH - STEP 2: UNIT DATA AND EVAL
- TECH - STEP 3: TEST, ADJUST AND BALANCE
- TECH - STEP 4: FINAL TESTS
- TECH - STEP 5: FINAL DOCUMENTATION



## 06-24-24 DOMINICKS SCOTTSDALE, AZ

### CheckList Information

**Name :** TECH - SITE PICTURES **Status :** Completed  
**Assigned Organization :** National TAB **Asset :**  
**Requesting Organization :** National TAB  
**Created Date :** 06/19/2024 - Brian Turnbough - National TAB  
**Completed Date :** 07/26/2024 - Michael McDonnell - National TAB

### CheckList Item Details

STORE FRONT

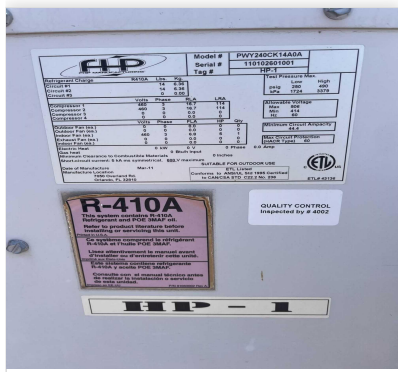
**Comment:**



**07/25/2024**

WSHP-1

**Comment:**



07/25/2024



07/25/2024

WSHP-2

Comment:



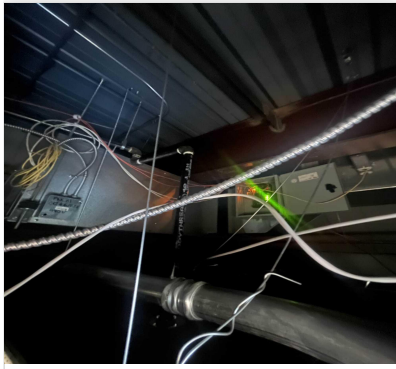
07/25/2024



07/25/2024

WSHP-3

Comment:



07/26/2024



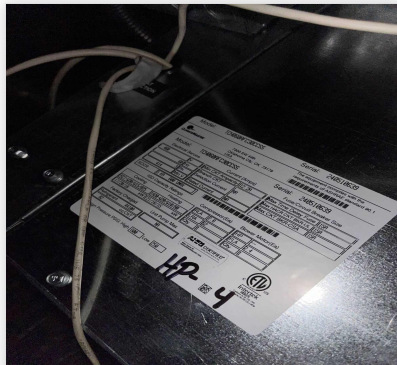
07/26/2024

WSHP-4

Comment:



07/26/2024



07/26/2024

WSHP-5

Comment:



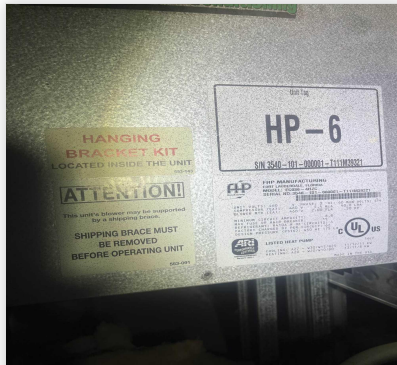
07/26/2024

WSHP-6

Comment:



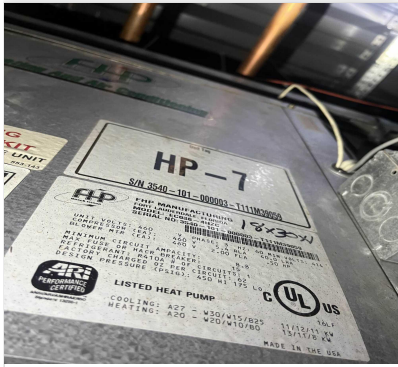
07/26/2024



07/26/2024

WSHP-7

Comment:



07/26/2024



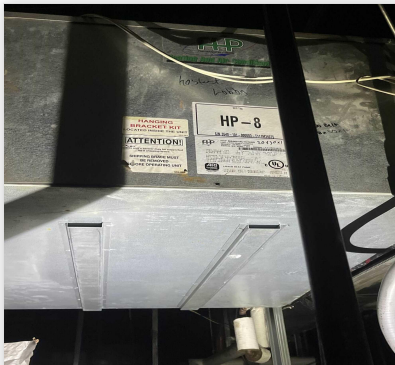
07/26/2024

WSHP-8

Comment:



07/26/2024



07/26/2024

WSHP-9

Comment:



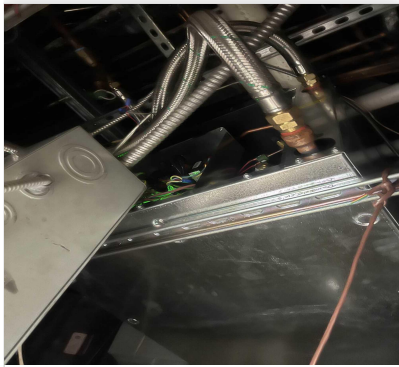
07/26/2024

---

WSHP-10

**Comment:**

---



07/26/2024

---

RTU-1

**Comment:**

---



07/25/2024

RTU-2

Comment:



07/25/2024



07/25/2024



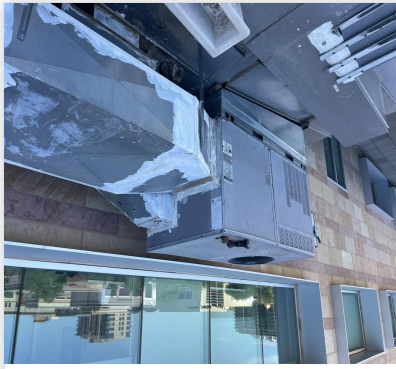
07/26/2024

RTU-3

Comment:



07/26/2024



07/26/2024

---

KEF-1 / PCU

Comment:



07/26/2024

---

HOOD-1

Comment:



07/26/2024



07/26/2024

HOOD-2

Comment:



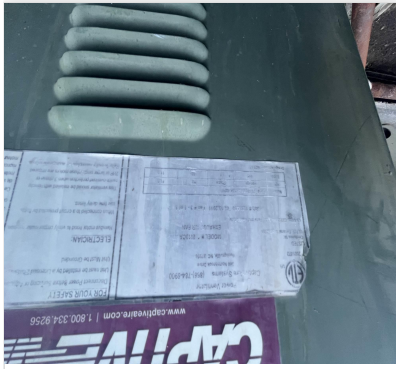
07/26/2024



07/26/2024

KEF-2

Comment:



07/26/2024



07/26/2024

HOOD-3

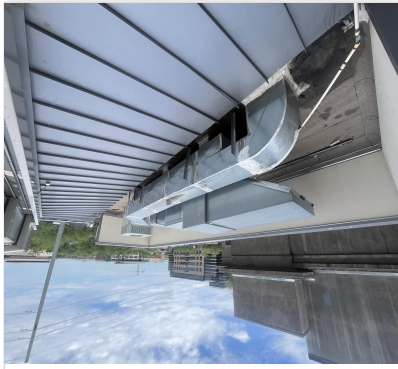
Comment:



07/26/2024

MAU

Comment:



07/26/2024



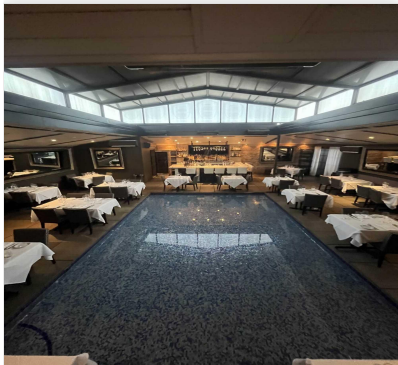
07/26/2024



07/26/2024

POOL ROOM

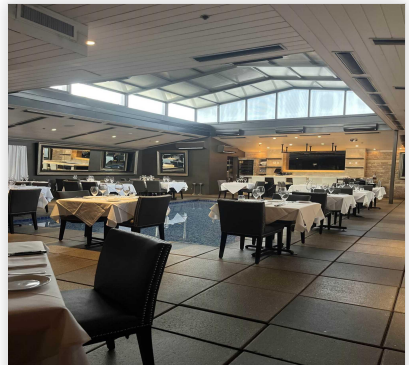
Comment:



07/26/2024



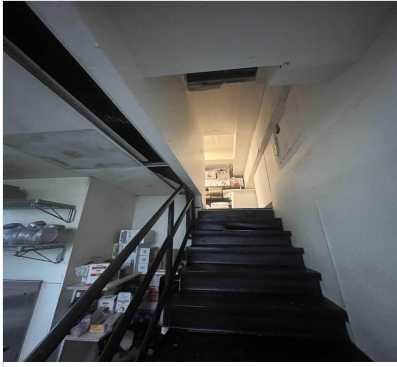
07/26/2024



07/26/2024

OFFICE

Comment:



07/26/2024



07/26/2024



07/26/2024



## 06-24-24 DOMINICKS SCOTTSDALE, AZ

### CheckList Information

**Name :** TECH - STEP 1: INITIAL SITE WALKTHROUGH      **Status :** Completed

**Assigned Organization :** National TAB      **Asset :**

**Requesting Organization :** National TAB

**Created Date :** 06/19/2024 - Brian Turnbough - National TAB

**Completed Date :** 07/26/2024 - Michael McDonnell - National TAB

### CheckList Item Details

#### INITIAL SITE WALKTHROUGH

All diffusers and grilles are installed and match design?      N/A

**Comment:**

MSET provides basic layout of store and general diffuser locations. Does not include 2nd floor and major changes have been made to HVAC system design.

All hood filters installed and accounted for?      Yes

**Comment:**

20x20 Captrate Filters. Filters appear relatively clean with relatively uniform velocities.

Hoods are wired and have power?      Yes

**Comment:**

Yes, however hoods are not controlled by hood switch and do not turn off other than at roof disconnect.

Hood is free of alarms?      Yes

**Comment:**

Thermostats have power?      Yes

**Comment:**

Controls Company (AZ Control Specialists), control WSHP operation. They DO NOT control hood systems or 3 RTUS serving stairwell and 2nd floor pool room. Those RTUs are controlled by installed thermostats.

Have trades/general contractor been notified about any issues and are they created on FaciliBuild?

**Comment:**

NA



## 06-24-24 DOMINICKS SCOTTSDALE, AZ

### CheckList Information

**Name :** TECH - STEP 2: UNIT DATA AND EVAL **Status :** Completed

**Assigned Organization :** National TAB **Asset :**

**Requesting Organization :** National TAB

**Created Date :** 06/19/2024 - Brian Turnbough - National TAB

**Completed Date :** 07/26/2024 - Michael McDonnell - National TAB

### CheckList Item Details

#### UNIT DATA AND EVALUATION WHILE GATHERING UNIT DATA CHECK THE FOLLOWING:

##### RTU's/AHU's

Economizers are assembled and functional? N/A

##### Comment:

Economizers installed on carrier units, do not appear operational. WSHP1 and WSHP2 on roof have manual damper OA inlet cut into horizontal rooftop return duct. WSHP 4 and 9 are not ducted for outside air. All other WSHPs are ducted for OA from common duct with manual dampers installed. Most of these dampers are not easily accessible.

DCV Max damper opening position is set to minimum? N/A

##### Comment:

Manual Dampers

Free cooling enthalpy set point set for lowest setting (Typically "D") N/A

##### Comment:

Manual Damper

Motors are all operating below the FLA rating? N/A

##### Comment:

Unable to verify on all units. Accessible units were all found to be below FLA.

Are belts tight?

**Comment:**

On belt driven units, yes.

If direct drive unit is the speed controller working.

**Comment:**

NA

Is gas piping installed and valves turned on?

N/A

**Comment:**

NA.

Unit free of noticeable noise and vibration

Yes

**Comment:**

**EF's**

Rotation is correct?

Yes

**Comment:**

Belts are tight?

**Comment:**

Yes

Grease cup installed on hood fan?

N/A

**Comment:**

PCU installed.

Hinge kit installed installed on hood fan?

N/A

**Comment:**

PCU installed.

Lean fan back. Is grease duct installation adequate and is duct ran all the way to the base of the fan?

N/A

**Comment:**

PCU installed.

Flex conduit is long enough so that fan can be completely tilted back?

**Comment:**

PCU installed.

There is no major leakage around base of fan?

No

**Comment:**

Is the motor operating below the motor FLA rating?

Yes

**Comment:**

For restroom fan(s) is the back draft damper installed and can it fully open?

N/A

**Comment:**

Restroom exhaust is served from common building exhaust fan. does not appear operational.

Unit free of noticeable noise and vibration?

Yes

**Comment:**

**MUA**

Rotation is correct?

Yes

**Comment:**

Gas piping is installed and valves are in on position?

N/A

**Comment:**

Heater tested and is functional?

N/A

**Comment:**

Internal motorized damper is fully opening?

N/A

**Comment:**

Motor is operating below the FLA rating?

Yes

**Comment:**

Unit free of noticeable noise and vibration?

Yes

**Comment:**

---

**HOODS**

---

Kitchen equipment installed in proper places?

Yes

---

**Comment:**

---

Can kitchen equipment be turned on for final smoke test?

Yes

---

**Comment:**

---

**DOCUMENTATION**

---

Have trades/general contractor been notified about any issues and are they created on FaciliBuild?

N/A

---

**Comment:**

---



## 06-24-24 DOMINICKS SCOTTSDALE, AZ

### CheckList Information

**Name :** TECH - STEP 3: TEST, ADJUST AND BALANCE      **Status :** Completed

**Assigned Organization :** National TAB      **Asset :**

**Requesting Organization :** National TAB

**Created Date :** 06/19/2024 - Brian Turnbough - National TAB

**Completed Date :** 07/26/2024 - Michael McDonnell - National TAB

### CheckList Item Details

#### TEST, ADJUST, AND BALANCE ALL EQUIPMENT:

#### DURING TESTING MAKE NOTE OF THE FOLLOWING:

Is space free of drafting? No

#### Comment:

Significant Drafting Occurs when either or both WSHP-1 and WSHP-2 are operating. Both units returns are all located in the beverage prep area. This causes significant drafting pulling from the dining and kitchen space.

Is space comfortable in all areas? No

#### Comment:

Pool room and office are very uncomfortable, especially during operating hours when filled with people.

Is the space free of ventilation noise? Yes

#### Comment:

Noise is heard when WSHPs power on, but nothing out of ordinary.

If deviations from design were necessary to resolve 1-3 what were they? Otherwise put "NA".

#### Comment:

NA



06-24-24 DOMINICKS SCOTTSDALE, AZ

CheckList Information

**Name :** TECH - STEP 4: FINAL TESTS **Status :** Completed

**Assigned Organization :** National TAB **Asset :**

**Requesting Organization :** National TAB

**Created Date :** 06/19/2024 - Brian Turnbough - National TAB

**Completed Date :** 07/26/2024 - Michael McDonnell - National TAB

CheckList Item Details

**FINAL TESTS**

**HOOD CAPTURE TEST**

List equipment turned on for testing

**Comment:**

Stove, Oven

List smoke candle type used

**Comment:**

45 Second Smoke emitter

Smoke test capture - Perimeter of hood

**Comment:**

100%

Smoke test capture - Top of cooking surface

**Comment:**

100%

**WITNESS**

Date test was completed

06/26/2024

**Comment:**

TAB tech name / Firm

**Comment:**

Michael McDonnell / National TAB

Site super name / Firm

**Comment:**

NA

Owner representative name / Firm (if Applicable)

**Comment:**

NA

Building pressure at front & back doors (All Systems On)

**Comment:**

0.006" When all WSHPs are operating, but without dishood or general exhaust operating. Building remained relatively neutral during testing, but was measured negative at the back door (located in rear of kitchen); unable to obtain accurate reading due to air curtain. There is no Outside Air ducted to the Kitchen WSHPs.

**ADDITIONAL**

Do actual net building airflow, design net building airflow, and pressure coincide? If not why? (All three should either be positive or negative)

**Comment:**

Unknown

Thermostats are programmed?

Yes

**Comment:**

Units run in Fan Auto, controlled by AZ control specialists.



**06-24-24 DOMINICKS SCOTTSDALE, AZ**

**CheckList Information**

**Name :** TECH - STEP 5: FINAL DOCUMENTATION      **Status :** Not Completed  
**Assigned Organization :** National TAB      **Asset :**  
**Requesting Organization :** National TAB  
**Created Date :** 06/19/2024 - Brian Turnbough - National TAB

**CheckList Item Details**

**FINAL DOCUMENTATION**

---

Marked Data capture complete for all assets?

**Comment:**

---

Picture file sent to processing team or uploaded?

**Comment:**

---

Balance schedule complete and uploaded?

**Comment:**

---

Prelim report generated and reviewed?

**Comment:**

---



# National TAB

Project: 06-24-24 DOMINICKS SCOTTSDALE, AZ

## System/Unit: AHU/RTU

Asset: RTU1

AREA:STAIRWELL

Unit Data		
	Design	Actual
MFG	NA	TRANE
Serial Num	-	113410300L
Model Num	NA	4WCC3036A
Type	-	RTU
Configuration	-	VERTICAL
Num OA Filters 1	-	NONE INSTALLED
Num Final Filter 1	-	NONE INSTALLED

Motor Data		
	Design	Actual
Horsepower	-	0.5
Motor Rpm	-	NL
Phase	-	1
Rated Voltage	-	208/230
Rated Amperage	-	2.7

Test Data		
	Design	Actual
SF CFM	-	1155
SF RPM	-	DD
RA CFM	-	1155
OA CFM	-	0-NOT IONSTALLED
RA Damper Position	-	100%
Min OA Damper Type	-	NONE INSTALLED

Performance Data		
	Design	Actual
MA Plenum SP	-	-0.54"
Fan Suction SP	-	-0.86"
Fan Discharge SP	-	0.19"
Total ESP	-	0.73"
Fan Total SP	-	1.05"

General	
	Actual
Fan Rotation Correct	YES
Unit Filters Clean	NONE INSTALLED
Condensate Drain Installed	YES

Completed By: Michael McDonnell on 07/25/2024

Notes:

[1] SERVES DIFFUSERS IN STAIRWELL. FILTER INSTALLED AT RETURN, FOUND DIRTY. REMOVED FOR TESTING. UNIT OPERATES IN FAN AUTO.

[2] POWER CONDUIT TO UNIT DAMAGED-SEE ISSUE

Written By: Michael McDonnell on 07/25/2024



# National TAB

Project: 06-24-24 DOMINICKS SCOTTSDALE, AZ

## System/Unit: AHU/RTU

Asset: RTU2

AREA: POOL SOUTH

Unit Data		
	Design	Actual
MFG	NA	CARRIER
Serial Num	-	1008G30518
Model Num	NA	50HJQ006
Type	-	RTU
Configuration	-	HORIZONTAL
Num OA Filters 1	-	1
OA Filter Size 1	-	36X16

Motor Data		
	Design	Actual
Motor MFG	-	GE
Frame	-	56Y
Horsepower	-	NL
Motor Rpm	-	1725
Phase	-	3
Rated Voltage	-	208-230/460
Rated Amperage	-	5.2/2.6

Test Data		
	Design	Actual
SF CFM	-	2309
SF RPM	-	1240
RA CFM	-	2309
OA CFM	-	0
RL Voltage	-	482/482/482
RL Amperage	-	1.5/1.5/1.5
SF Rotation	-	CORRECT
RA Damper Position	-	100%
Min OA Damper Position	-	0%
Min OA Damper Type	-	ECONOMIZER

Performance Data		
	Design	Actual
MA Plenum SP	-	-0.25"
Fan Suction SP	-	-0.73"
Fan Discharge SP	-	0.55"
Total ESP	-	0.80"
Fan Total SP	-	1.28"

General	
	Actual
Fan Rotation Correct	YES
Unit Filters Clean	YES
Condensate Drain Installed	YES

Completed By: Michael McDonnell on 07/25/2024

Notes:  
[1] UNIT NOT OPERATING COOLING AT TIME OF VISIT. REPAIR WAS IN PROGRESS.

Written By: Michael McDonnell on 07/25/2024



# National TAB

Project: 06-24-24 DOMINICKS SCOTTSDALE, AZ

## System/Unit: AHU/RTU

Asset: RTU3

AREA: POOL NORTH

Unit Data		
	Design	Actual
MFG	NA	CARRIER
Serial Num	-	2808G10432
Model Num	NA	50HJQ006
Type	-	RTU
Configuration	-	HORIZONTAL
Num OA Filters 1	-	1
OA Filter Size 1	-	36X16

Motor Data		
	Design	Actual
Motor MFG	-	GE
Frame	-	56Y
Horsepower	-	NL
Motor Rpm	-	1725
Phase	-	3
Rated Voltage	-	208-230/ 460
Rated Amperage	-	5.6/ 2.8

Test Data		
	Design	Actual
SF CFM	-	2269
SF RPM	-	1256
RA CFM	-	2269
OA CFM	-	0
RL Voltage	-	482/482/482
RL Amperage	-	1.8/1.8/1.8
SF Rotation	-	CORRECT
RA Damper Position	-	100%
Min OA Damper Position	-	0%
Min OA Damper Type	-	ECONOMIZER

Performance Data		
	Design	Actual
MA Plenum SP	-	-0.29"
Fan Suction SP	-	-0.81"
Fan Discharge SP	-	0.43"
Total ESP	-	0.72"
Fan Total SP	-	1.24"

General	
	Actual
Fan Rotation Correct	YES
Unit Filters Clean	YES
Condensate Drain Installed	YES

Completed By: Michael McDonnell on 07/25/2024



# National TAB

Project: 06-24-24 DOMINICKS SCOTTSDALE, AZ

## System/Unit: AHU/RTU

Asset: WSHP1

AREA: UPPER DINING / STAIRWELL AND WAITING LINEARS

Unit Data		
	Design	Actual
MFG	MCQUAY	FHP
Serial Num	-	1101026
Model Num	WRWH1-240-EKYHE	PWY240CK14A0A
Type	WSHP	WSHP
Configuration	VERTICAL	HORIZONTAL
Num OA Filters 1	-	1
OA Filter Size 1	-	20X14
Num Final Filter 1	-	1 / 1
Final Filter Size 1	-	20X20X2 / 20X24X2
Num Final Filter 2	-	1 / 1
Final Filter Size 2	-	16X20X2 / 16X24X2

Motor Data		
	Design	Actual
Motor MFG	-	TECO WESTINGHOUSE
Frame	-	184T
Horsepower	-	5.0
Motor Rpm	-	1750
Phase	3	3
Rated Voltage	480	460
Rated Amperage	-	6.80

Drive Data	
	Actual
Motor Sheave Size	5"
Motor Bore Size	1-1/8"
Motor Sheave SetPt	0-1 TURN OPEN
Fan Sheave Size	8.75"
Fan Sheave Bore	1-3/16"
Belt CL Distance	11" CL
Num of Belts	2
Belt Size	BX44
Belt Alignment	VERIFIED

Test Data		
	Design	Actual
SF CFM	-	5360
SF RPM	-	861
RA CFM	-	5360
OA CFM	-	0
RL Voltage	-	481/481/482
RL Amperage	-	4.4/4.4/4.6
SF Rotation	-	CORRECT
SF System SetPt	-	CAV
RA Damper Position	-	100%
Min OA Damper Position	-	0%
Min OA Damper Type	-	MANUAL DAMPER

Performance Data		
	Design	Actual
MA Plenum SP	-	-0.51"
Fan Suction SP	-	-0.78"
Fan Discharge SP	-	0.62"
Total ESP	0.5"	1.13"
Fan Total SP	-	1.40"

General	
	Actual
Fan Rotation Correct	YES
Unit Filters Clean	YES
Condensate Drain Installed	YES

Completed By: Michael McDonnell on 07/25/2024

Notes:  
 [1]OA INTAKE CUT INTO HORIZONTAL ROOFTOP RETURN. MANUAL DAMPER FULLY CLOSED.

Written By: Michael McDonnell on 07/25/2024



# National TAB

Project: 06-24-24 DOMINICKS SCOTTSDALE, AZ

## System/Unit: AHU/RTU

Asset: WSHP2

AREA:BAR

Unit Data		
	Design	Actual
MFG	MCQUAY	FHP
Serial Num	-	110102601002
Model Num	WRWH1-180-EKYHE	PWY240CK14A0A
Type	RTU	WSHP
Configuration	VERTICAL	HORIZONTAL
Num OA Filters 1	-	1
OA Filter Size 1	-	20X14
Num Final Filter 1	-	1 / 1
Final Filter Size 1	-	20X20X2 / 20X24X2
Num Final Filter 2	-	1 / 1
Final Filter Size 2	-	16X20X2 / 16X24X2

Motor Data		
	Design	Actual
Motor MFG	-	TECO WESTINGHOUSE
Frame	-	184T
Horsepower	-	5.0 HP
Motor Rpm	-	1750
Phase	3	3
Rated Voltage	480	460
Rated Amperage	-	6.30

Test Data		
	Design	Actual
SF CFM	-	6697
SF RPM	-	917
RA CFM	-	6697
OA CFM	-	0
RL Voltage	-	481/482/482
RL Amperage	-	4.1/4.1/4.3
SF Rotation	-	CORRECT
SF System SetPt	-	CAV
RA Damper Position	-	100%
Min OA Damper Position	-	0%
Min OA Damper Type	-	MANUAL DAMPER

General	
	Actual
Fan Rotation Correct	YES
Unit Filters Clean	YES
Condensate Drain Installed	YES

Completed By: Michael McDonnell on 07/25/2024

Notes:  
 [1]OA INTAKE CUT INTO HORIZONTAL ROOFTOP RETURN. MANUAL DAMPER FULLY CLOSED.

Written By: Michael McDonnell on 07/25/2024



# National TAB

Project: 06-24-24 DOMINICKS SCOTTSDALE, AZ

## System/Unit: AHU/RTU

Asset: WSHP3

AREA: POOL PRIVATE DINING

Unit Data		
	Design	Actual
MFG	MCQUAY	FHP
Serial Num	-	3540-203-000001
Model Num	WRWH1-180-EKYHE	EC036-4HZC
Type	-	WHP
Configuration	-	HORIZONTAL
Num OA Filters 1	-	NONE
Num Final Filter 1	-	1
Num Final Filter 2	-	18X30X1

Test Data		
	Design	Actual
SF CFM	-	1374
RA CFM	-	0
OA CFM	-	1374

General	
	Actual
Fan Rotation Correct	YES
Unit Filters Clean	YES
Condensate Drain Installed	YES

Motor Data		
	Design	Actual
Horsepower	-	0.5
Phase	3	3
Rated Voltage	480	460
Rated Amperage	-	2.0

Completed By: Michael McDonnell on 07/25/2024

Notes:

- [1] SERVES GRILLES IN 2ND FLOOR PRIVATE DINING ROOM AND 2ND FLOOR BACK HALL / RESTROOMS.
- [2] UNIT IS IN NEIGHBORING TENANT SPACE, RETURN PULLING FROM CELING PLEMNUM IN THAT SPACE.
- [2] NOT DUCTED FOR OA. ALL SUPPLY AIR, TECHNICALLY OA.

Written By: Michael McDonnell on 07/25/2024



# National TAB

Project: 06-24-24 DOMINICKS SCOTTSDALE, AZ

## System/Unit: AHU/RTU

Asset: WSHP4

AREA:

Unit Data		
	Design	Actual
MFG	MCQUAY	CLIMATE MASTER
Serial Num	-	240510639
Model Num	WRWH1-120-EHYHE	TCH060AFC30
Type	HP	HP
Configuration	HORIZONTAL	HORIZONTAL
Num OA Filters 1	-	NONE
Num Final Filter 1	-	1
Final Filter Size 1	-	24X24

Test Data		
	Design	Actual
SF CFM	-	1823
SF RPM	-	DD
RA CFM	-	1823
OA CFM	-	0

General	
	Actual
Fan Rotation Correct	YES
Unit Filters Clean	NO-REMOVED FOR TESTING
Condensate Drain Installed	YES

Motor Data		
	Design	Actual
Horsepower	-	NL
Motor Rpm	-	NL
Phase	3	3
Rated Voltage	480	460
Rated Amperage	-	2.4

Completed By: Michael McDonnell on 07/25/2024

Notes:

- [1] SERVES FRONT KITCHEN AREA-4 DIFFUSERS IN COOKING AREA AND HAS 2 GRILLES DUCTED FROM UNIT TO 2ND FLOOR OFFICE. OFFICE GRILLES TOTAL 401 CFM. THERE IS NO RETURN IN OFFICE.
- [2] FILTER INSTALLED ON RETURN INITIALLY FOUND CLOGGED, REPLACED FILTER. AIRFLOW INCREASED FROM 1100 CFM TO 1823 CFM.

Written By: Michael McDonnell on 07/26/2024



# National TAB

Project: 06-24-24 DOMINICKS SCOTTSDALE, AZ

## System/Unit: AHU/RTU

Asset: WSHP5

AREA:WINE ROOM

Unit Data		
	Design	Actual
MFG	NA	NA
Serial Num	-	NA
Model Num	NA	NA
Type	-	WSHP
Configuration	-	HORIZONTAL

Test Data		
	Design	Actual
SF CFM	-	1441
OA CFM	-	[2]

Completed By: Michael McDonnell on 07/25/2024

Notes:

- [1] UNIT SERVES LINEARS IN WINE ROOM. 2 ARE SUPPLY, 2 ARE RETURN. UNABLE TO ACCESS UNIT SAFELY.
- [2] UNIT DUCTED FOR OUTSIDE AIR, UNACCESSIBLE.

Written By: Michael McDonnell on 07/25/2024



# National TAB

Project: 06-24-24 DOMINICKS SCOTTSDALE, AZ

## System/Unit: AHU/RTU

Asset: WSHP6

AREA:SOUTH DINING

Unit Data		
	Design	Actual
MFG	NA	FHP
Serial Num	-	3540-101-000001
Model Num	NA	EC036-4HZC
Type	-	WSHP
Configuration	-	HORIZONTAL

Test Data		
	Design	Actual
SF CFM	-	1223
OA CFM	-	[1]

Motor Data		
	Design	Actual
Motor MFG	-	NA
Horsepower	-	0.5
Motor Rpm	-	NL
Phase	-	3
Rated Voltage	-	460
Rated Amperage	-	2.0

Completed By: Michael McDonnell on 07/25/2024



# National TAB

Project: 06-24-24 DOMINICKS SCOTTSDALE, AZ

## System/Unit: AHU/RTU

Asset: WSHP7

AREA:PRIVATE DINING

Unit Data		
	Design	Actual
MFG	NA	FHP
Serial Num	-	3540-101-000003-T111M39059
Model Num	NA	ECO36-HHZA
Type	-	WSHP
Configuration	-	HORIZONTAL

Test Data		
	Design	Actual
SF CFM	-	798
OA CFM	-	[1]

Motor Data		
	Design	Actual
Motor MFG	-	NL
Horsepower	-	0.5
Motor Rpm	-	NL
Phase	-	3
Rated Voltage	-	460
Rated Amperage	-	2.00

Completed By: Michael McDonnell on 07/25/2024

Notes:

[1] UNIT DUCTED FOR OA, UNACCESSIBLE.

[2] SERVES PRIVATE DINING ROOM. 2 LINEAR SUPPLY DIFFUSERS AND 1 LINEAR RETURN.

Written By: Michael McDonnell on 07/25/2024



# National TAB

Project: 06-24-24 DOMINICKS SCOTTSDALE, AZ

## System/Unit: AHU/RTU

Asset: WSHP8

AREA: LOBBY / RR

Unit Data		
	Design	Actual
MFG	NA	FHP
Serial Num	-	3540-101-000003-T111M34075
Model Num	NA	EC060-4HZC
Type	-	WSHP
Configuration	-	HORIZONTAL

Test Data		
	Design	Actual
SF CFM	-	1598
OA CFM	-	[1]

Motor Data		
	Design	Actual
Motor MFG	-	NL
Horsepower	-	0.75
Motor Rpm	-	NL
Phase	-	3
Rated Voltage	-	460
Rated Amperage	-	2.75

Completed By: Michael McDonnell on 07/25/2024

Notes:

- [1] DUCTED FOR OA, NOT ACCESSIBLE.
- [2] UNIT SERVES LOBBY AND RESTROOMS.

Written By: Michael McDonnell on 07/25/2024



# National TAB

Project: 06-24-24 DOMINICKS SCOTTSDALE, AZ

## System/Unit: AHU/RTU

Asset: WSHP9

AREA: REAR KITCHEN

Unit Data		
	Design	Actual
MFG	NA	CLIMATE MASTER
Serial Num	-	NA
Model Num	NA	TCH060AFC30
Type	-	WSHP
Configuration	-	HORIZONTAL

Test Data		
	Design	Actual
SF CFM	-	1697

Motor Data		
	Design	Actual
Motor MFG	-	NL
Horsepower	-	NL
Motor Rpm	-	NL
Phase	-	3
Rated Voltage	-	460
Rated Amperage	-	2.4

Completed By: Michael McDonnell on 07/25/2024

- Notes:
- [1] ELECTRICAL COMPARTMENT COVER MISSING. COULD NOT FIND IN THE CEILING.
  - [2] NOT DUCTED FOR OA.

Written By: Michael McDonnell on 07/25/2024



# National TAB

Project: 06-24-24 DOMINICKS SCOTTSDALE, AZ

## System/Unit: AHU/RTU

Asset: WSHP10

AREA:SOUTH DINING HOST WALL

Unit Data		
	Design	Actual
MFG	NA	NA
Serial Num	-	NA
Model Num	NA	NA
Type	-	WSHP
Configuration	-	HORIZONTAL

Test Data		
	Design	Actual
SF CFM	-	831

Motor Data		
	Design	Actual
Motor MFG	-	NA
Horsepower	-	NA

Completed By: Michael McDonnell on 07/25/2024

Notes:

- [1] DUCTED FOR OA, NOT ACCESSIBLE.
- [2] SERVES 3 LINEAR DIFFUSERS IN SOUTH DINING.

Written By: Michael McDonnell on 07/25/2024



# National TAB

Project: 06-24-24 DOMINICKS SCOTTSDALE, AZ

## System/Unit: FAN - Exhaust

Asset: EF1

AREA:GENERAL EXHAUST/TOILET

Unit Data		
	Design	Actual
MFG	NA	NA
Model Num	NA	NA
Serial Num	-	
Type	-	
Configuration	-	

Test Data		
	Design	Actual
CFM	3800	
Fan RPM	-	
Fan Rotation	-	
Motor RPM	-	
System SetPt	-	
RL Voltage	-	
RL Amperage	-	
Total ESP	-	
Fan Inlet SP	-	
Fan Discharge SP	-	

Motor Data		
	Design	Actual
Motor MFG	-	
Frame	-	
Horsepower	-	
Motor Rpm	-	
Phase	-	
Voltage (rated)	-	
Amperage (rated)	-	
Service Factor	-	

Notes:

RESTROOMS CONTROLLED BY COMMON BUILDING EXHAUST. I READ 0 AIRFLOW. MAINTENANCE STAFF SAID THEY WERE TOLD IT IS RUNNING FINE. ALSO TOLD NOT TO TOUCH COMMON BUILDING EXHAUST.

Written By: Michael McDonnell on 07/25/2024



# National TAB

Project: 06-24-24 DOMINICKS SCOTTSDALE, AZ

## System/Unit: FAN - Exhaust

Asset: KEF1

AREA:HD1 / HD2

Unit Data		
	Design	Actual
MFG	CAPTIVEAIRE	CAPTIVEAIRE
Model Num	NCA16FA	KB25
Serial Num	-	1289650
Type	UPBLAST ROOF	PCU
Configuration	VERTICAL	HORIZONTAL

Motor Data		
	Design	Actual
Motor MFG	-	MARATHON
Horsepower	-	7.5
Motor Rpm	-	3470
Phase	1	3
Voltage (rated)	208	208-230 / 460
Amperage (rated)	-	21.0-19.2 / 9.6
Service Factor	-	1.15

Test Data		
	Design	Actual
CFM	-	7214
Fan RPM	-	1101
Fan Rotation	-	CCW, CORRECT
Motor RPM	-	3452
System SetPt	-	SINGLE SPEED
RL Voltage	-	210/210/211
RL Amperage	-	14.8/14.6/14.4

Completed By: Michael McDonnell on 07/25/2024

Notes:

[1] NO CONTROLS IN SPACE, OPERATES 24/7.

Written By: Michael McDonnell on 07/26/2024



# National TAB

Project: 06-24-24 DOMINICKS SCOTTSDALE, AZ

## System/Unit: FAN - Exhaust

Asset: KEF2

AREA:

Unit Data		
	Design	Actual
MFG	CAPTIVEAIRE	CAPTIVEAIRE
Model Num	NCA18FA	BI13CA
Serial Num	-	1233530
Type	-	UTILITY
Configuration	-	HORIZONTAL

Motor Data		
	Design	Actual
Motor MFG	-	WEG
Frame	-	D56
Horsepower	-	0.75
Motor Rpm	-	1730
Phase	1	1
Voltage (rated)	208	208
Amperage (rated)	-	6.10
Service Factor	-	1.25

Test Data		
	Design	Actual
CFM	-	1026
Fan RPM	-	1038
Fan Rotation	-	CORRECT
Motor RPM	-	1784
System SetPt	-	SINGLE SPEED
RL Voltage	-	NR
RL Amperage	-	NR

Completed By: Michael McDonnell on 07/25/2024

Notes:

[1] NOT OPERATING, BUT FUNCTIONAL.

[2] NO CONTROLS IN SPACE. LEFT OFF AT ROOF DISCONNECT.

Written By: Michael McDonnell on 07/26/2024



# National TAB

Project: 06-24-24 DOMINICKS SCOTTSDALE, AZ

## System/Unit: FAN - Supply

Asset: MUA1

AREA:HD 1 / HD 2

Unit Data		
	Design	Actual
MFG	CAPTIVEAIRE	CAPTIVEAIRE
Model Num	A1-G10	A3-G18
Serial Num	-	1289560
Type	MUA	MUA
Configuration	VERTICAL	HORIZONTAL

Motor Data		
	Design	Actual
Motor MFG	-	WESTINGHOUSE
Horsepower	-	3.0
Phase	3	3
Voltage (rated)	208	208
Amperage (rated)	-	9.5

Test Data		
	Design	Actual
CFM	-	4617
SF RPM	-	442
Motor RPM	-	1788
SF System SetPt	-	SINGLE SPEED
RL Voltage	-	204/205/204
RL Amperage	-	4.4/4.4/4.3

General	
	Actual
Fan Rotation Correct	YES

Completed By: Michael McDonnell on 07/25/2024

Notes:

- [1] SWAMP COOLER
- [2] NO CONTROLS IN SPACE, APPEARS TO OPERATE 24/7.

Written By: Michael McDonnell on 07/26/2024



# National TAB

Project: 06-24-24 DOMINICKS SCOTTSDALE, AZ

## System/Unit: Kitchen Hood Type I

Asset: HD1

AREA: KITCHEN LEFT

Unit Data		
	Design	Actual
MFG	CAPTIVEAIRE	CAPTIVEAIRE
Model Num	NA	NL
Job / Serial Num	-	NL
Type	TYPE 1 CANOPY	TYPE I CANOPY
Hood length	-	180"
Hood Width	-	60"
Supply Plenum Type	-	PSP
Supply Plenum Width	-	12"
Supply Plenum Length	-	192"

Test Data Exhaust		
	Design	Actual
Filter Type	-	BAFFLE
Filter Size 1	-	20X20
Filter Qty 1	-	9
Filter AK factor size 1	-	2.68
Filter Total AK Area	-	24.12
Filter1 FPM	-	121
Filter2 FPM	-	107
Filter3 FPM	-	118
Filter4 FPM	-	125
Filter5 FPM	-	121
Filter6 FPM	-	132
Filter7 FPM	-	149
Filter8 FPM	-	135
Filter9 FPM	-	129
Filter Ave FPM(corr)	-	126.33
CFM	-	3047

Cooking Equipment	
	Actual
Item 1	FRYER
Item 2	FRYER
Item 3	FRYER
Item 4	STOVE
Item 5	BROILER

Test Data Supply		
	Design	Actual
Total AK Area	-	16.00
Kv factor (Vel)	-	0.87
Num of Readings	-	12
Reading1 FPM	-	264
Reading2 FPM	-	184
Reading3 FPM	-	183
Reading4 FPM	-	246
Reading5 FPM	-	227
Reading6 FPM	-	153
Reading7 FPM	-	134
Reading8 FPM	-	190
Reading9 FPM	-	238
Reading10 FPM	-	194
Reading11 FPM	-	117
Reading12 FPM	-	177
Ave FPM(corr)	-	167.25
CFM	2625	2676

Completed By: Michael McDonnell on 07/25/2024



# National TAB

Project: 06-24-24 DOMINICKS SCOTTSDALE, AZ

## System/Unit: Kitchen Hood Type I

Asset: HD2

AREA:

Unit Data		
	Design	Actual
MFG	CAPTIVEAIRE	CAPTIVEAIRE
Model Num	NA	NL
Job / Serial Num	-	NL
Type	-	TYPE I CANOPY
Hood length	-	180"
Hood Width	-	60"
Supply Plenum Type	-	psp
Supply Plenum Width	-	12"
Supply Plenum Length	-	180"

Test Data Exhaust		
	Design	Actual
Filter Type	-	BAFFLE
Filter Size 1	-	20X20
Filter Qty 1	-	9
Filter AK factor size 1	-	2.68
Filter Total AK Area	-	24.12
Filter1 FPM	-	191
Filter2 FPM	-	158
Filter3 FPM	-	177
Filter4 FPM	-	183
Filter5 FPM	-	162
Filter6 FPM	-	187
Filter7 FPM	-	177
Filter8 FPM	-	156
Filter9 FPM	-	164
Filter10 FPM	-	191
Filter11 FPM	-	158
Filter12 FPM	-	177
Filter Ave FPM(corr)	-	172.78
CFM	-	4167

Cooking Equipment	
	Actual
Item 1	BROILER
Item 2	BROILER
Item 3	OVEN
Item 4	OVEN
Item 5	WARMING RACK

Test Data Supply		
	Design	Actual
Total AK Area	-	15
Kv factor (Vel)	-	0.87
Num of Readings	-	12
Reading1 FPM	-	179
Reading2 FPM	-	170
Reading3 FPM	-	164
Reading4 FPM	-	171
Reading5 FPM	-	138
Reading6 FPM	-	131
Reading7 FPM	-	170
Reading8 FPM	-	171
Reading9 FPM	-	154
Reading10 FPM	-	110
Reading11 FPM	-	107
Reading12 FPM	-	120
Ave FPM(corr)	-	129.4
CFM	4102	1941

Completed By: Michael McDonnell on 07/25/2024



# National TAB

Project: 06-24-24 DOMINICKS SCOTTSDALE, AZ

## System/Unit: Kitchen Hood Type II

Asset: HD3

AREA:DISH HOOD

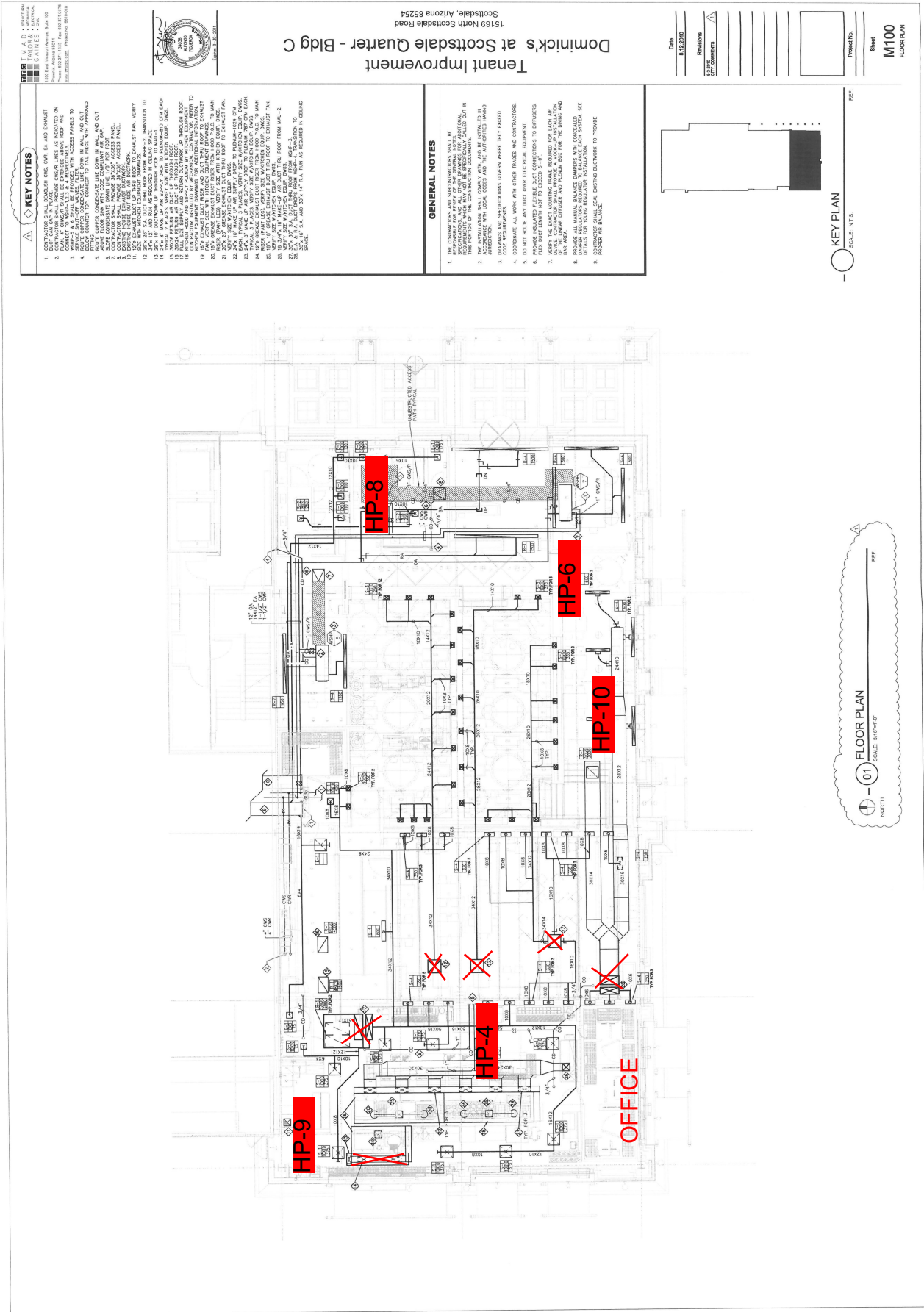
### Unit Data

	Design	Actual
<b>MFG</b>	CAPTIVEAIRE	CAPTIVEAIRE
<b>Model Num</b>	NA	NL
<b>Serial Num</b>	-	NL
<b>Type</b>	TYPE 2	TYPE II
<b>Hood length</b>	-	48"
<b>Hood Width</b>	-	96"

### Test Data

	Design	Actual
<b>Exhaust CFM</b>	-	0

Completed By: Michael McDonnell on 07/25/2024



**KEY NOTES**

1. CONTRACTOR SHALL PROVIDE CHW, CHW, SA AND EXHAUST
2. CONTRACTOR SHALL PROVIDE CHW, CHW, SA AND EXHAUST ON
3. CONTRACTOR SHALL PROVIDE CHW, CHW, SA AND EXHAUST ON
4. CONTRACTOR SHALL PROVIDE CHW, CHW, SA AND EXHAUST ON
5. CONTRACTOR SHALL PROVIDE CHW, CHW, SA AND EXHAUST ON
6. CONTRACTOR SHALL PROVIDE CHW, CHW, SA AND EXHAUST ON
7. CONTRACTOR SHALL PROVIDE CHW, CHW, SA AND EXHAUST ON
8. CONTRACTOR SHALL PROVIDE CHW, CHW, SA AND EXHAUST ON
9. CONTRACTOR SHALL PROVIDE CHW, CHW, SA AND EXHAUST ON
10. CONTRACTOR SHALL PROVIDE CHW, CHW, SA AND EXHAUST ON
11. CONTRACTOR SHALL PROVIDE CHW, CHW, SA AND EXHAUST ON
12. CONTRACTOR SHALL PROVIDE CHW, CHW, SA AND EXHAUST ON
13. CONTRACTOR SHALL PROVIDE CHW, CHW, SA AND EXHAUST ON
14. CONTRACTOR SHALL PROVIDE CHW, CHW, SA AND EXHAUST ON
15. CONTRACTOR SHALL PROVIDE CHW, CHW, SA AND EXHAUST ON
16. CONTRACTOR SHALL PROVIDE CHW, CHW, SA AND EXHAUST ON
17. CONTRACTOR SHALL PROVIDE CHW, CHW, SA AND EXHAUST ON
18. CONTRACTOR SHALL PROVIDE CHW, CHW, SA AND EXHAUST ON
19. CONTRACTOR SHALL PROVIDE CHW, CHW, SA AND EXHAUST ON
20. CONTRACTOR SHALL PROVIDE CHW, CHW, SA AND EXHAUST ON
21. CONTRACTOR SHALL PROVIDE CHW, CHW, SA AND EXHAUST ON
22. CONTRACTOR SHALL PROVIDE CHW, CHW, SA AND EXHAUST ON
23. CONTRACTOR SHALL PROVIDE CHW, CHW, SA AND EXHAUST ON
24. CONTRACTOR SHALL PROVIDE CHW, CHW, SA AND EXHAUST ON
25. CONTRACTOR SHALL PROVIDE CHW, CHW, SA AND EXHAUST ON
26. CONTRACTOR SHALL PROVIDE CHW, CHW, SA AND EXHAUST ON
27. CONTRACTOR SHALL PROVIDE CHW, CHW, SA AND EXHAUST ON
28. CONTRACTOR SHALL PROVIDE CHW, CHW, SA AND EXHAUST ON
29. CONTRACTOR SHALL PROVIDE CHW, CHW, SA AND EXHAUST ON
30. CONTRACTOR SHALL PROVIDE CHW, CHW, SA AND EXHAUST ON

**GENERAL NOTES**

1. THE CONTRACTOR AND SUBCONTRACTORS SHALL BE RESPONSIBLE FOR OBTAINING ALL NECESSARY PERMITS AND APPROVALS FROM THE LOCAL, STATE AND FEDERAL AGENCIES. THE CONTRACTOR SHALL BE RESPONSIBLE FOR OBTAINING ALL NECESSARY PERMITS AND APPROVALS FROM THE LOCAL, STATE AND FEDERAL AGENCIES.
2. THE INSTALLATION SHALL COMPLY WITH ALL APPLICABLE CODES AND REGULATIONS. THE CONTRACTOR SHALL BE RESPONSIBLE FOR OBTAINING ALL NECESSARY PERMITS AND APPROVALS FROM THE LOCAL, STATE AND FEDERAL AGENCIES.
3. COORDINATE ALL WORK WITH OTHER TRADES AND CONTRACTORS.
4. DO NOT ROUTE ANY DUCT OVER ELECTRICAL EQUIPMENT.
5. ALL DUCTWORK SHALL BE INSTALLED IN ACCORDANCE WITH THE MANUFACTURER'S INSTALLATION INSTRUCTIONS TO SPECIFICATIONS.
6. ALL DUCTWORK SHALL BE INSTALLED IN ACCORDANCE WITH THE MANUFACTURER'S INSTALLATION INSTRUCTIONS TO SPECIFICATIONS.
7. VERIFY THE EXISTING MECHANICAL SYSTEMS ARE INSTALLED IN ACCORDANCE WITH THE MANUFACTURER'S INSTALLATION INSTRUCTIONS TO SPECIFICATIONS.
8. PROVIDE ALL MAINTENANCE, SERVICE AND REPAIR ACCESS TO ALL MECHANICAL EQUIPMENT AND SYSTEMS. SEE DETAILS FOR MAINTENANCE, SERVICE AND REPAIR ACCESS.
9. PROVIDE ALL MAINTENANCE, SERVICE AND REPAIR ACCESS TO ALL MECHANICAL EQUIPMENT AND SYSTEMS. SEE DETAILS FOR MAINTENANCE, SERVICE AND REPAIR ACCESS.

KEY PLAN  
SCALE: NTS

01 FLOOR PLAN  
SCALE: 3/8"=1'-0"  
NORTH

Date	8.12.2010
Revisions	
Sheet	M100
Project No.	

Tenant Improvement  
Dominick's at Scottsdale Quarter - Bldg C  
1169 North Scottsdale Road  
Scottsdale, Arizona 85254



TRAVIS A. D. - ARCHITECT  
1169 North Scottsdale Road  
Scottsdale, Arizona 85254  
Phone: 480.341.1100  
Fax: 480.341.1100  
Email: travis@tad.com