

**Report By:**

National TAB  
1329 E. KEMPER ROAD  
SUITE 4210  
CINCINNATI, OH 45246



**Report: Phase II**  
**Function: Test, Adjust, & Balance**  
**Date: 12/16/2025**  
**Completed By: National TAB**

**PROJECT**  
**12-01-25 DOMINICKS SCOTTSDALE, AZ**  
**(PHASE II)**

15169 N Scottsdale Rd

Scottsdale, AZ 85254

**Client**

Prime Steak Concepts  
7345 E Acoma Dr Ste 101

SCOTTSDALE, AZ

# National TAB

Project: 12-01-25 DOMINICKS SCOTTSDALE, AZ (PHASE II)

## Table Of Contents

<b>Section</b>	<b>Page #</b>
AHU/RTU	3
FAN - Exhaust	24
FAN - Supply	28
Kitchen Hood Type I	30
Kitchen Hood Type II	34

# National TAB

Project: 12-01-25 DOMINICKS SCOTTSDALE, AZ (PHASE II)

System/Unit: AHU/RTU



Asset: RTU1

AREA:STAIRWELL

Unit Data		
	Design	Actual
MFG	NA	TRANE
Serial Num	-	113410300L
Model Num	NA	4WCC3036A
Type	-	RTU
Configuration	-	VERTICAL
Num OA Filters 1	-	NONE INSTALLED
Num Final Filter 1	-	INSTALLED IN RETURN GRILLE

Motor Data		
	Design	Actual
Horsepower	-	0.5
Motor Rpm	-	NL
Phase	-	1
Rated Voltage	-	208/230
Rated Amperage	-	2.7

Test Data		
	Design	Actual
SF CFM	-	1106
SF RPM	-	DD
RA CFM	-	1106
OA CFM	-	0-NOT IONSTALLED
RA Damper Position	-	100%
Min OA Damper Type	-	NONE INSTALLED

Performance Data		
	Design	Actual
MA Plenum SP	-	-0.54"
Fan Suction SP	-	-0.86"
Fan Discharge SP	-	0.19"
Total ESP	-	0.73"
Fan Total SP	-	1.05"

General	
	Actual
Fan Rotation Correct	YES
Unit Filters Clean	YES
Condensate Drain Installed	YES

Completed By: David Nicolas Sanchez on 12/04/2025

Notes:

- [1] SERVES DIFFUSERS IN STAIRWELL. FILTER INSTALLED AT RETURN, FOUND DIRTY. REMOVED FOR TESTING. UNIT OPERATES IN FAN AUTO.
- [2] POWER CONDUIT TO UNIT DAMAGED-SEE ISSUE
- [3] NO FILTER INSTALLED AT COIL.

Written By: Michael McDonnell on 07/26/2024

## Unit Data - PHOTO LOG



12/02/2025

# National TAB

Project: 12-01-25 DOMINICKS SCOTTSDALE, AZ (PHASE II)

System/Unit: AHU/RTU



Asset: RTU2

AREA: POOL SOUTH

Unit Data		
	Design	Actual
MFG	NA	CARRIER
Serial Num	-	1008G30518
Model Num	NA	50HJQ006
Type	-	RTU
Configuration	-	HORIZONTAL
Num OA Filters 1	-	1
OA Filter Size 1	-	36X16

Motor Data		
	Design	Actual
Motor MFG	-	GE
Frame	-	56Y
Horsepower	-	NL
Motor Rpm	-	1725
Phase	-	3
Rated Voltage	-	208-230/460
Rated Amperage	-	5.2/2.6

Test Data		
	Design	Actual
SF CFM	-	2280
SF RPM	-	1240
RA CFM	-	2309
OA CFM	-	0
RL Voltage	-	482/482/482
RL Amperage	-	1.5/1.5/1.5
SF Rotation	-	CORRECT
RA Damper Position	-	100%
Min OA Damper Position	-	0%
Min OA Damper Type	-	ECONOMIZER

Performance Data		
	Design	Actual
MA Plenum SP	-	-0.23"
Fan Suction SP	-	-0.77"
Fan Discharge SP	-	0.59"
Total ESP	-	0.82"
Fan Total SP	-	1.36"

General	
	Actual
Fan Rotation Correct	YES
Unit Filters Clean	YES
Condensate Drain Installed	YES

Completed By: David Nicolas Sanchez on 12/04/2025

Notes:

- [1] UNIT NOT OPERATING COOLING AT TIME OF VISIT. REPAIR WAS IN PROGRESS.
- [2] FAN PULLEY APPEARS DAMAGED.

Written By: Michael McDonnell on 07/26/2024

## Unit Data - PHOTO LOG



12/02/2025

# National TAB

Project: 12-01-25 DOMINICKS SCOTTSDALE, AZ (PHASE II)

System/Unit: AHU/RTU



Asset: RTU3

AREA: POOL NORTH

Unit Data		
	Design	Actual
MFG	NA	CARRIER
Serial Num	-	2808G10432
Model Num	NA	50HJQ006
Type	-	RTU
Configuration	-	HORIZONTAL
Num OA Filters 1	-	1
OA Filter Size 1	-	36X16

Motor Data		
	Design	Actual
Motor MFG	-	GE
Frame	-	56Y
Horsepower	-	NL
Motor Rpm	-	1725
Phase	-	3
Rated Voltage	-	208-230/ 460
Rated Amperage	-	5.6/ 2.8

Test Data		
	Design	Actual
SF CFM	-	2172
SF RPM	-	1256
RA CFM	-	2269
OA CFM	-	0
RL Voltage	-	482/482/482
RL Amperage	-	1.8/1.8/1.8
SF Rotation	-	CORRECT
RA Damper Position	-	100%
Min OA Damper Position	-	0%
Min OA Damper Type	-	ECONOMIZER

Performance Data		
	Design	Actual
MA Plenum SP	-	-0.28"
Fan Suction SP	-	-0.83"
Fan Discharge SP	-	0.43"
Total ESP	-	0.71"
Fan Total SP	-	1.26"

General	
	Actual
Fan Rotation Correct	YES
Unit Filters Clean	YES
Condensate Drain Installed	YES

Completed By: David Nicolas Sanchez on 12/04/2025

Notes:  
[1] FAN PULEY DAMAGED / CRACKED

Written By: Michael McDonnell on 07/26/2024

## Unit Data - PHOTO LOG



12/02/2025

# National TAB

Project: 12-01-25 DOMINICKS SCOTTSDALE, AZ (PHASE II)

## System/Unit: AHU/RTU



Asset: WSHP1

AREA: UPPER DINING / STAIRWELL AND WAITING LINEARS

Unit Data		
	Design	Actual
MFG	MCQUAY	FHP
Serial Num	-	1101026
Model Num	WRWH1-240-EKYHE	PWY240CK14A0A
Type	WSHP	WSHP
Configuration	VERTICAL	HORIZONTAL
Num OA Filters 1	-	1
OA Filter Size 1	-	20X14
Num Final Filter 1	-	1 / 1
Final Filter Size 1	-	20X20X2 / 20X24X2
Num Final Filter 2	-	1 / 1
Final Filter Size 2	-	16X20X2 / 16X24X2

Motor Data		
	Design	Actual
Motor MFG	-	TECO WESTINGHOUSE
Frame	-	184T
Horsepower	-	5.0
Motor Rpm	-	1750
Phase	3	3
Rated Voltage	480	460
Rated Amperage	-	6.80

Drive Data	
	Actual
Motor Sheave Size	5"
Motor Bore Size	1-1/8"
Motor Sheave SetPt	0-1 TURN OPEN
Fan Sheave Size	8.75"
Fan Sheave Bore	1-3/16"
Belt CL Distance	11" CL
Num of Belts	2
Belt Size	BX44
Belt Alignment	VERIFIED

Test Data		
	Design	Actual
SF CFM	-	5987
SF RPM	-	861
RA CFM	-	5360
OA CFM	-	0
RL Voltage	-	481/481/482
RL Amperage	-	4.4/4.4/4.6
SF Rotation	-	CORRECT
SF System SetPt	-	CAV
RA Damper Position	-	100%
Min OA Damper Position	-	0%
Min OA Damper Type	-	MANUAL DAMPER

Performance Data		
	Design	Actual
MA Plenum SP	-	-0.51"
Fan Suction SP	-	-0.78"
Fan Discharge SP	-	0.62"
Total ESP	0.5"	1.13"
Fan Total SP	-	1.40"

General	
	Actual
Fan Rotation Correct	YES
Unit Filters Clean	YES
Condensate Drain Installed	YES

Completed By: David Nicolas Sanchez on 12/03/2025

- Notes:
- [1] OA INTAKE CUT INTO HORIZONTAL ROOFTOP RETURN. MANUAL DAMPER FULLY CLOSED.
  - [2] GRILLES IN SPACE SUPPLY WALL PLENUM. SEE ISSUE.
  - [3] UNIT LOCATED ON THE ROOF

Written By: David Nicolas Sanchez on 12/04/2025

**Unit Data - PHOTO LOG**



**12/02/2025**

# National TAB

Project: 12-01-25 DOMINICKS SCOTTSDALE, AZ (PHASE II)

## System/Unit: AHU/RTU



Asset: WSHP2

AREA:BAR

Unit Data		
	Design	Actual
MFG	MCQUAY	FHP
Serial Num	-	110102601002
Model Num	WRWH1-180-EKYHE	PWY240CK14A0A
Type	RTU	WSHP
Configuration	VERTICAL	HORIZONTAL
Num OA Filters 1	-	1
OA Filter Size 1	-	20X14
Num Final Filter 1	-	1 / 1
Final Filter Size 1	-	20X20X2 / 20X24X2
Num Final Filter 2	-	1 / 1
Final Filter Size 2	-	16X20X2 / 16X24X2

Motor Data		
	Design	Actual
Motor MFG	-	TECO WESTINGHOUSE
Frame	-	184T
Horsepower	-	5.0 HP
Motor Rpm	-	1750
Phase	3	3
Rated Voltage	480	460
Rated Amperage	-	6.30

Test Data		
	Design	Actual
SF CFM	-	6673
SF RPM	-	917
RA CFM	-	6697
OA CFM	-	0
RL Voltage	-	481/482/482
RL Amperage	-	4.1/4.1/4.3
SF Rotation	-	CORRECT
SF System SetPt	-	CAV
RA Damper Position	-	100%
Min OA Damper Position	-	0%
Min OA Damper Type	-	MANUAL DAMPER

General	
	Actual
Fan Rotation Correct	YES
Unit Filters Clean	YES
Condensate Drain Installed	YES

Completed By: David Nicolas Sanchez on 12/03/2025

Notes:  
[1]OA INTAKE CUT INTO HORIZONTAL ROOFTOP RETURN. MANUAL DAMPER FULLY CLOSED.

Unit located on roof.

Written By: David Nicolas Sanchez on 12/03/2025

## Unit Data - PHOTO LOG



12/02/2025

# National TAB

Project: 12-01-25 DOMINICKS SCOTTSDALE, AZ (PHASE II)

## System/Unit: AHU/RTU



Asset: WSHP3

AREA: POOL PRIVATE DINING

Unit Data		
	Design	Actual
MFG	MCQUAY	COOL MASTER
Serial Num	-	251910471
Model Num	WRWH1-180-EKYHE	SCL036AFC30C0PS
Type	-	WHP
Configuration	-	HORIZONTAL
Num OA Filters 1	-	NONE

Motor Data		
	Design	Actual
Horsepower	-	0.5
Phase	3	3
Rated Voltage	480	460
Rated Amperage	-	1.2

Test Data		
	Design	Actual
SF CFM	-	1156
RA CFM	-	0
OA CFM	-	1156
SF Rotation	-	CCW
SF System SetPt	-	MEDIUM SPEED

General	
	Actual
Fan Rotation Correct	YES
Unit Filters Clean	YES
Condensate Drain Installed	YES

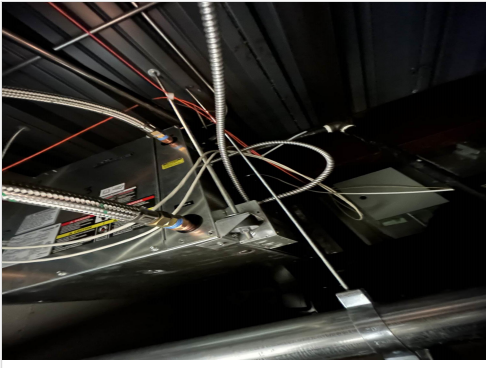
Completed By: David Nicolas Sanchez on 12/03/2025

Notes:

- [1] SERVES GRILLES IN 2ND FLOOR PRIVATE DINING ROOM AND 2ND FLOOR BACK HALL / RESTROOMS.
- [2] UNIT IS IN NEIGHBORING TENANT SPACE, RETURN PULLING FROM CELING PLEMNUM IN THAT SPACE.
- [2] NOT DUCTED FOR OA. ALL SUPPLY AIR, TECHNICALLY OA.

Written By: David Nicolas Sanchez on 12/03/2025

## Unit Data - PHOTO LOG



12/04/2025

# National TAB

Project: 12-01-25 DOMINICKS SCOTTSDALE, AZ (PHASE II)

System/Unit: AHU/RTU



Asset: WSHP4

AREA:KITCHEN

Unit Data		
	Design	Actual
MFG	MCQUAY	CLIMATE MASTER
Serial Num	-	240510639
Model Num	WRWH1-120-EHYHE	TCH060AFC30
Type	HP	HP
Configuration	HORIZONTAL	HORIZONTAL
Num OA Filters 1	-	NONE
Num Final Filter 1	-	1
Final Filter Size 1	-	24X24

Test Data		
	Design	Actual
SF CFM	-	2256
SF RPM	-	DD
RA CFM	-	2256
OA CFM	-	0

General	
	Actual
Fan Rotation Correct	YES
Unit Filters Clean	YES
Condensate Drain Installed	YES

Motor Data		
	Design	Actual
Horsepower	-	NL
Motor Rpm	-	NL
Phase	3	3
Rated Voltage	480	460
Rated Amperage	-	2.4

Completed By: David Nicolas Sanchez on 12/04/2025

Notes:

- [1] SERVES FRONT KITCHEN AREA-4 DIFFUSERS IN COOKING AREA AND HAS 2 GRILLES DUCTED FROM UNIT TO 2ND FLOOR OFFICE. OFFICE GRILLES TOTAL 401 CFM. THERE IS NO RETURN IN OFFICE.
  - [2] FILTER INSTALLED ON RETURN INITIALLY FOUND CLOGGED, REPLACED FILTER. AIRFLOW INCREASED FROM 1100 CFM TO 1823 CFM.
  - [3] NOT DUCTED FOR OA.
- Unit located in Front Kitchen.

Written By: David Nicolas Sanchez on 12/03/2025

# National TAB

Project: 12-01-25 DOMINICKS SCOTTSDALE, AZ (PHASE II)

System/Unit: AHU/RTU



Asset: WSHP5

AREA:WINE ROOM

Unit Data		
	Design	Actual
MFG	NA	CLIMATE MASTER
Serial Num	-	251910787
Model Num	NA	SCR036AFC30C0PS
Type	-	WSHP
Configuration	-	HORIZONTAL

Test Data		
	Design	Actual
SF CFM	-	1239
OA CFM	-	[2]

General	
	Actual
Fan Rotation Correct	YES
Unit Filters Clean	YES
Condensate Drain Installed	YES

Notes:

- [1] UNIT SERVES LINEARS IN WINE ROOM. 2 ARE SUPPLY, 2 ARE RETURN. UNABLE TO ACCESS UNIT SAFELY.
- [2] UNIT DUCTED FOR OUTSIDE AIR, DAMPER NOT ACCESSIBLE.
- [3] UNIT LOCATED ABOVE WINE ROOM.

Written By: David Nicolas Sanchez on 12/04/2025

# National TAB

Project: 12-01-25 DOMINICKS SCOTTSDALE, AZ (PHASE II)

System/Unit: AHU/RTU



Asset: WSHP6

AREA:SOUTH DINING

Unit Data		
	Design	Actual
MFG	NA	CLIMATE MASTER
Serial Num	-	252910471
Model Num	NA	SCL036AFC30C0PS
Type	-	WSHP
Configuration	-	HORIZONTAL

Test Data		
	Design	Actual
SF CFM	-	1132
OA CFM	-	[1]

General	
	Actual
Condensate Drain Installed	YES

Motor Data		
	Design	Actual
Motor MFG	-	NL
Horsepower	-	0.5
Motor Rpm	-	NL
Phase	-	3
Rated Voltage	-	460
Rated Amperage	-	1.2

Completed By: David Nicolas Sanchez on 12/04/2025

Notes:  
 [1] DUCTED FOR OA, NOT ACCESSIBLE.  
 Located above hallway.

Written By: David Nicolas Sanchez on 12/03/2025

## Unit Data - PHOTO LOG



12/04/2025

# National TAB

Project: 12-01-25 DOMINICKS SCOTTSDALE, AZ (PHASE II)

System/Unit: AHU/RTU



Asset: WSHP7

AREA:PRIVATE DINING

Unit Data		
	Design	Actual
MFG	NA	CLIMATE MASTER
Serial Num	-	251910755
Model Num	NA	SCR036AFC30C0PS
Type	-	WSHP
Configuration	-	HORIZONTAL

Test Data		
	Design	Actual
SF CFM	-	1256
OA CFM	-	[1]
SF Rotation	-	CCW
SF System SetPt	-	MEDIUM SPEED

Motor Data		
	Design	Actual
Motor MFG	-	NL
Horsepower	-	0.5
Motor Rpm	-	NL
Phase	-	3
Rated Voltage	-	460
Rated Amperage	-	1.20

General	
	Actual
Fan Rotation Correct	YES
Unit Filters Clean	YES
Condensate Drain Installed	YES

Completed By: David Nicolas Sanchez on 12/03/2025

Notes:  
 [1] UNIT DUCTED FOR OA, DAMPER NOT ACCESSIBLE.  
 [2] SERVES PRIVATE DINING ROOM. 2 LINEAR SUPPLY DIFFUSERS AND 1 LINEAR RETURN.  
 Located above executive private dining.

Written By: David Nicolas Sanchez on 12/03/2025

# National TAB

Project: 12-01-25 DOMINICKS SCOTTSDALE, AZ (PHASE II)

## System/Unit: AHU/RTU



Asset: WSHP8

AREA: LOBBY / RR

Unit Data		
	Design	Actual
MFG	NA	CLIMATE MASTER
Serial Num	-	252010362
Model Num	NA	SCR060ALC30C0PS
Type	-	WSHP
Configuration	-	HORIZONTAL

Motor Data		
	Design	Actual
Motor MFG	-	NL
Horsepower	-	0.50
Motor Rpm	-	NL
Phase	-	3
Rated Voltage	-	460
Rated Amperage	-	2.40

Test Data		
	Design	Actual
SF CFM	-	2226
OA CFM	-	[1]
SF Rotation	-	CCW
SF System SetPt	-	MEDIUM SPEED
Min OA Damper Type	-	MANUAL

General	
	Actual
Fan Rotation Correct	YES
Unit Filters Clean	YES
Condensate Drain Installed	YES

Completed By: David Nicolas Sanchez on 12/03/2025

Notes:

[1] DUCTED FOR OA, NOT ACCESSIBLE.

[2] UNIT SERVES LOBBY AND RESTROOMS.

Written By: Michael McDonnell on 07/25/2024

# National TAB

Project: 12-01-25 DOMINICKS SCOTTSDALE, AZ (PHASE II)

System/Unit: AHU/RTU



Asset: WSHP9

AREA: REAR KITCHEN

Unit Data		
	Design	Actual
MFG	NA	CLIMATE MASTER
Serial Num	-	NA
Model Num	NA	TCH060AFC30
Type	-	WSHP
Configuration	-	HORIZONTAL

Test Data		
	Design	Actual
SF CFM	-	1204

Motor Data		
	Design	Actual
Motor MFG	-	NL
Horsepower	-	NL
Motor Rpm	-	NL
Phase	-	3
Rated Voltage	-	460
Rated Amperage	-	2.4

Completed By: David Nicolas Sanchez on 12/04/2025

Notes:

- [1] ELECTRICAL COMPARTMENT COVER MISSING. COULD NOT FIND IN THE CEILING.
- [2] NOT DUCTED FOR OA.
- [3] UNABLE TO FULLY ACCESS UNIT DUE TO LIMITED SURROUNDING SPACE.

Written By: David Nicolas Sanchez on 12/04/2025

# National TAB

Project: 12-01-25 DOMINICKS SCOTTSDALE, AZ (PHASE II)

System/Unit: AHU/RTU



Asset: WSHP10

AREA: SOUTH DINING HOST WALL

Unit Data		
	Design	Actual
MFG	NA	CLIMATE MASTER
Serial Num	-	252910468
Model Num	NA	SCL036AFC30C0PS
Type	-	WSHP
Configuration	-	HORIZONTAL

Test Data		
	Design	Actual
SF CFM	-	1323

Motor Data		
	Design	Actual
Motor MFG	-	NL
Frame	-	NL
Horsepower	-	0.50
Motor Rpm	-	NL
Phase	-	3
Rated Voltage	-	460
Rated Amperage	-	1.2

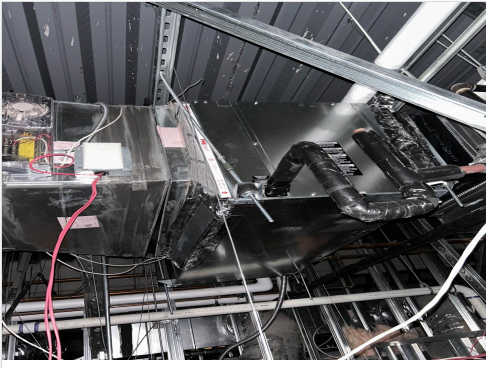
Completed By: David Nicolas Sanchez on 12/04/2025

Notes:

- [1] DUCTED FOR OA, NOT ACCESSIBLE.
- [2] SERVES 3 LINEAR DIFFUSERS IN SOUTH DINING.

Written By: Michael McDonnell on 07/25/2024

## Unit Data - PHOTO LOG



12/04/2025

# National TAB

Project: 12-01-25 DOMINICKS SCOTTSDALE, AZ (PHASE II)

## System/Unit: FAN - Exhaust



Asset: KEF1

AREA:HD1 / HD2

Unit Data		
	Design	Actual
MFG	CAPTIVEAIRE	CAPTIVEAIRE
Model Num	NCA16FA	KB25
Serial Num	-	1289650
Type	UPBLAST ROOF	PCU
Configuration	VERTICAL	HORIZONTAL

Motor Data		
	Design	Actual
Motor MFG	-	MARATHON
Horsepower	-	7.5
Motor Rpm	-	3470
Phase	1	3
Voltage (rated)	208	208-230 / 460
Amperage (rated)	-	21.0-19.2 / 9.6
Service Factor	-	1.15

Test Data		
	Design	Actual
CFM	-	7163
Fan RPM	-	1101
Fan Rotation	-	CCW, CORRECT
Motor RPM	-	3452
System SetPt	-	SINGLE SPEED
RL Voltage	-	210/210/211
RL Amperage	-	14.8/14.6/14.4

Completed By: David Nicolas Sanchez on 12/02/2025

Notes:

[1] NO CONTROLS IN SPACE, OPERATES 24/7.

Written By: Michael McDonnell on 07/26/2024

## Unit Data - PHOTO LOG



12/02/2025

# National TAB

Project: 12-01-25 DOMINICKS SCOTTSDALE, AZ (PHASE II)

## System/Unit: FAN - Exhaust



Asset: KEF2

AREA:HD-3

Unit Data		
	Design	Actual
MFG	CAPTIVEAIRE	CAPTIVEAIRE
Model Num	NCA18FA	BI13CA
Serial Num	-	1233530
Type	-	UTILITY
Configuration	-	HORIZONTAL

Test Data		
	Design	Actual
CFM	-	1008
Fan RPM	-	1038
Fan Rotation	-	CORRECT
Motor RPM	-	1784
System SetPt	-	SINGLE SPEED
RL Voltage	-	NR
RL Amperage	-	NR

Motor Data		
	Design	Actual
Motor MFG	-	WEG
Frame	-	D56
Horsepower	-	0.75
Motor Rpm	-	1730
Phase	1	1
Voltage (rated)	208	208
Amperage (rated)	-	6.10
Service Factor	-	1.25

Completed By: David Nicolas Sanchez on 12/03/2025

Notes:

- [1] NOT OPERATING, BUT FUNCTIONAL.
- [2] NO CONTROLS IN SPACE. LEFT OFF AT ROOF DISCONNECT.

Written By: Michael McDonnell on 07/26/2024

## Unit Data - PHOTO LOG



12/02/2025

# National TAB

Project: 12-01-25 DOMINICKS SCOTTSDALE, AZ (PHASE II)

## System/Unit: FAN - Supply



Asset: MUA1

AREA:HD 1 / HD 2

Unit Data		
	Design	Actual
MFG	CAPTIVEAIRE	CAPTIVEAIRE
Model Num	A1-G10	A3-G18
Serial Num	-	1289560
Type	MUA	MUA
Configuration	VERTICAL	HORIZONTAL

Motor Data		
	Design	Actual
Motor MFG	-	WESTINGHOUSE
Horsepower	-	3.0
Phase	3	3
Voltage (rated)	208	208
Amperage (rated)	-	9.5

Test Data		
	Design	Actual
CFM	-	9469
SF RPM	-	442
Motor RPM	-	1788
SF System SetPt	-	SINGLE SPEED
RL Voltage	-	204/205/204
RL Amperage	-	4.4/4.4/4.3

General	
	Actual
Fan Rotation Correct	YES

Completed By: David Nicolas Sanchez on 12/03/2025

Notes:

- [1] SWAMP COOLER
- [2] NO CONTROLS IN SPACE, APPEARS TO OPERATE 24/7.

Written By: Michael McDonnell on 07/26/2024

## Unit Data - PHOTO LOG



12/02/2025

# National TAB

Project: 12-01-25 DOMINICKS SCOTTSDALE, AZ (PHASE II)

## System/Unit: Kitchen Hood Type I



Asset: HD1

AREA: KITCHEN LEFT

Unit Data		
	Design	Actual
MFG	CAPTIVEAIRE	CAPTIVEAIRE
Model Num	NA	NL
Job / Serial Num	-	NL
Type	TYPE 1 CANOPY	TYPE I CANOPY
Hood length	-	180"
Hood Width	-	60"
Supply Plenum Type	-	PSP
Supply Plenum Width	-	12"
Supply Plenum Length	-	192"

Test Data Supply		
	Design	Actual
Total Area	-	16.00
Kv factor (Vel)	-	0.87
Num of Readings	-	12
Reading1 FPM	-	484
Reading2 FPM	-	541
Reading3 FPM	-	596
Reading4 FPM	-	240
Reading5 FPM	-	336
Reading6 FPM	-	298
Ave FPM(corr)	-	415
CFM	2625	5776

Test Data Exhaust		
	Design	Actual
Filter Type	-	BAFFLE
Filter Size 1	-	20X20
Filter Qty 1	-	9
Filter AK factor size 1	-	2.68
Filter Total AK Area	-	24.12
Filter1 FPM	-	103
Filter2 FPM	-	121
Filter3 FPM	-	122
Filter4 FPM	-	114
Filter5 FPM	-	144
Filter6 FPM	-	140
Filter7 FPM	-	156
Filter8 FPM	-	120
Filter9 FPM	-	136
Filter Ave FPM(corr)	-	128
CFM	-	3087

Cooking Equipment	
	Actual
Item 1	FRYER
Item 2	FRYER
Item 3	FRYER
Item 4	STOVE
Item 5	BROILER

Completed By: David Nicolas Sanchez on 12/03/2025

Notes:

- [1] Some Hood lightbulbs need replacement.
  - [2] Hood Control only operates lights, not fans.
- Hood PSP has been removed. Supply readings are higher compared to readings with PSP on.

Written By: David Nicolas Sanchez on 12/03/2025

## Unit Data - PHOTO LOG



12/02/2025

# National TAB

Project: 12-01-25 DOMINICKS SCOTTSDALE, AZ (PHASE II)

## System/Unit: Kitchen Hood Type I



Asset: HD2

AREA:

Unit Data		
	Design	Actual
MFG	CAPTIVEAIRE	CAPTIVEAIRE
Model Num	NA	NL
Job / Serial Num	-	NL
Type	-	TYPE I CANOPY
Hood length	-	180"
Hood Width	-	60"
Supply Plenum Type	-	psp
Supply Plenum Width	-	12"
Supply Plenum Length	-	180"

Test Data Supply		
	Design	Actual
Total Area	-	15
Kv factor (Vel)	-	0.87
Num of Readings	-	6
Reading1 FPM	-	171
Reading2 FPM	-	121
Reading3 FPM	-	335
Reading4 FPM	-	273
Reading5 FPM	-	518
Reading6 FPM	-	282
Ave FPM(corr)	-	283
CFM	4102	3693

Test Data Exhaust		
	Design	Actual
Filter Type	-	BAFFLE
Filter Size 1	-	20X20
Filter Qty 1	-	9
Filter AK factor size 1	-	2.68
Filter Total AK Area	-	24.12
Filter1 FPM	-	152
Filter2 FPM	-	168
Filter3 FPM	-	168
Filter4 FPM	-	157
Filter5 FPM	-	163
Filter6 FPM	-	170
Filter7 FPM	-	181
Filter8 FPM	-	178
Filter Ave FPM(corr)	-	169
CFM	-	4076

Cooking Equipment	
	Actual
Item 1	BROILER
Item 2	BROILER
Item 3	OVEN
Item 4	OVEN
Item 5	WARMING RACK

Completed By: David Nicolas Sanchez on 12/03/2025

Notes:

- [1] LIGHTBULBS IN NEED OF REPLACEMENT.
  - [2] HOOD CONTROL ONLY OPERATES LIGHTS, NOT FANS.
- Hood PSP has been removed. Supply readings are higher compared to readings with PSP on.

Written By: David Nicolas Sanchez on 12/03/2025

## Unit Data - PHOTO LOG



12/02/2025

# National TAB

Project: 12-01-25 DOMINICKS SCOTTSDALE, AZ (PHASE II)

## System/Unit: Kitchen Hood Type II



Asset: HD3

AREA:DISH HOOD

Unit Data		
	Design	Actual
MFG	CAPTIVEAIRE	CAPTIVEAIRE
Model Num	NA	NL
Serial Num	-	NL
Type	TYPE 2	TYPE II
Hood length	-	48"
Hood Width	-	96"

Test Data		
	Design	Actual
Exhaust CFM	-	1008

Completed By: David Nicolas Sanchez on 12/03/2025

Notes:

[1] FUNCTIONAL, BUT NOT OPERATIONAL. NO CONTROL OF EXHAUST FAN IN SPACE.

Written By: Michael McDonnell on 07/26/2024

## Unit Data - PHOTO LOG



12/02/2025