

**APPROVED**

By Scott Larsen at 5:40 pm, Jun 20, 2023



8355 W. Bradley Rd.  
Milwaukee, WI 53223  
(414) 973-7436 (Tel)  
(414) 351-1933 (Fax)  
ljacob@airflowreps.com

# Submittal Cover Sheet

Project: **Outlets at the Dells Ulta Beauty**  
Location: Baraboo, WI  
Mechanical: Air Temperature Services, Inc.  
Architect: Chipman Design Architecture, Inc.  
Engineer: WCW Engineers, Inc.  
Date: Wednesday, June 14, 2023

I am pleased to provide submittal drawings on the following equipment for your approval.

<i>Manufacturer</i>	<i>Equipment</i>
- Loren Cook	- Inline Fan

If there are any questions, or you require any additional information, please contact me at your convenience.

Sincerely,  
Air Flow, Inc.

*Mark Nemeth*  
Mark Nemeth

*Ryan Post*  
Ryan Post

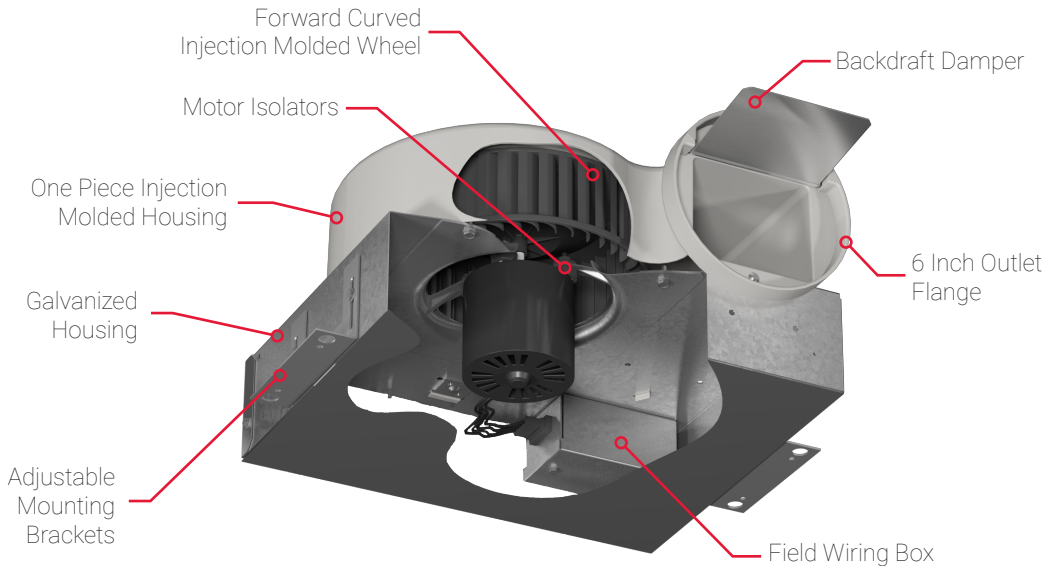
*Logan Jacob*  
Logan Jacob

# INLINE FEATURES



The Gemini inline standard construction features are shown below.

## GN 126 - 188 & GNVF 100 - 180





# COOK



MARK: EF-1

PROJECT: OUTLETS AT THE DELLS ULTA BEAUTY

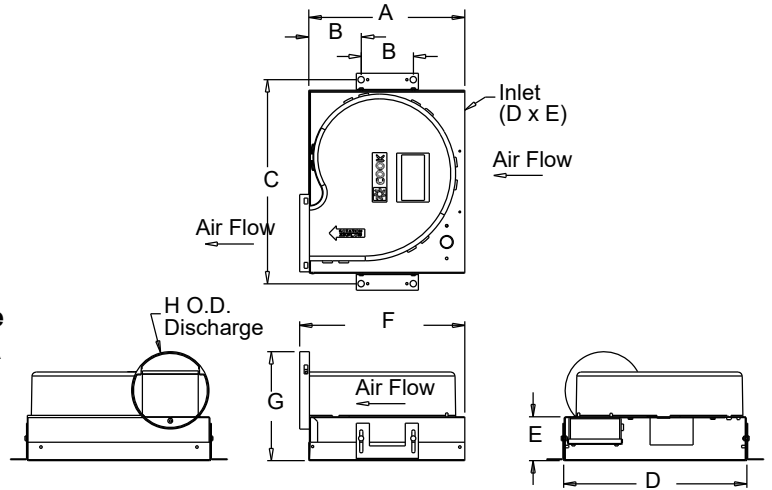
DATE: 6/14/2023

## GEMINI

### Inline Fans 100 Series

#### STANDARD CONSTRUCTION FEATURES:

Forward curved injection molded polypropylene fan wheel - Injection molded flame resistant fan housing with round outlet duct - 22 ga. galvanized steel inlet box - Permanently lubricated 2-speed motor with built-in thermal overload protection and disconnect plug - Isolation mounted motor, mounted to one piece galvanized stamped steel integral motor mount/inlet - Field wiring compartment with receptacle - Adjustable prepunched mounting bracket - Shipped in ISTA certified transit tested packaging.



#### Performance

Qty	Catalog Number	Flow (CFM)	SP (inwc)	Nominal RPM	Input Watts	Speed Control
1	GN-188	200	.500	1357	96	FSC

Altitude (ft): 692 Temperature (F): 70

#### Motor Information

Volts/Ph/Hz	Nameplate Amps
115/1/60	1

#### Sound Data Inlet Sound Power by Octave Band

1	2	3	4	5	6	7	8	LwA	dBA	Sones
58	62	67	63	59	54	51	47	65	53	5.0

- Distance from Sound source 5 ft

#### Accessories:

FAN SPEED CONTROLLER 5A 120V PREWIRED  
INTEGRAL BD DAMPER  
GEMINI ISOLATOR KIT - ISOLATORS

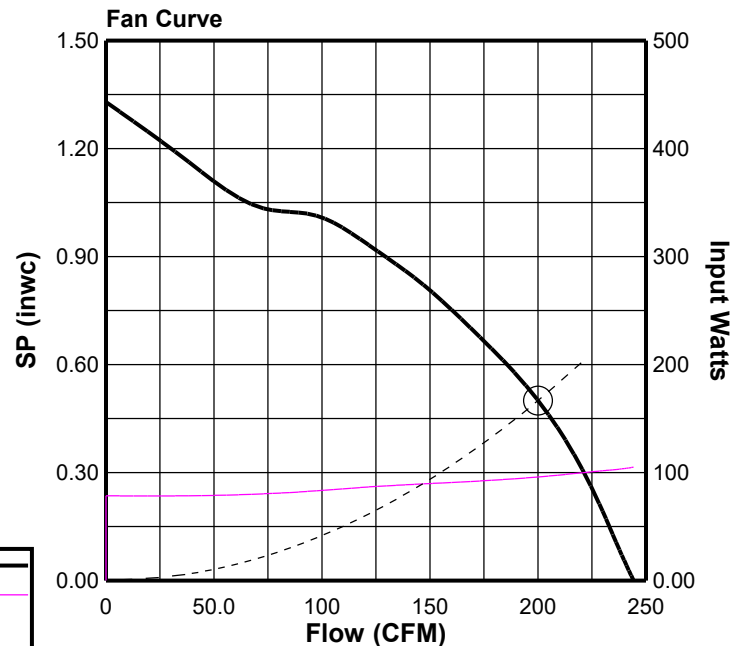
#### Dimensions (inches)

A	12
B	4
C	15-5/8
D	14
E	3-3/8
F	12-3/4
G	8-3/8
H O.D.	5-15/16

NOTE: Accessories may affect dimensions shown.

Weight(lbs)***	Shipping	18	Unit	15

\*\*\*Includes fan, motor & accessories.



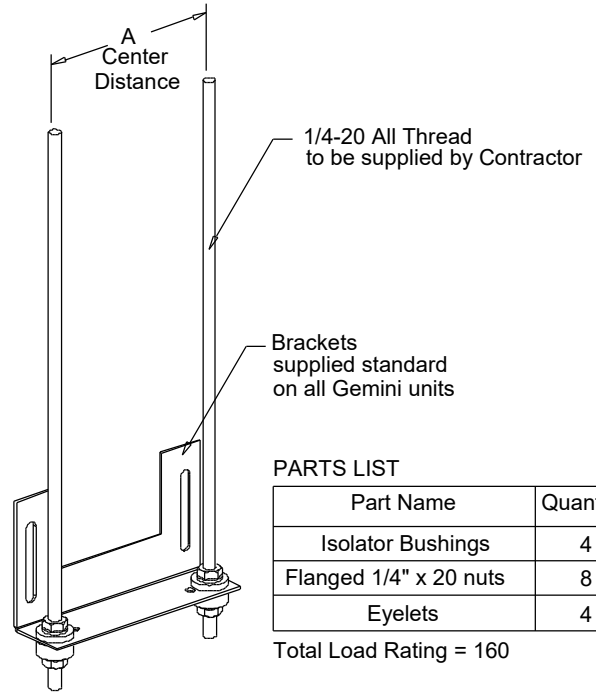


# COOK

<b>PROJECT: OUTLETS AT THE DELLS ULTA BEAUTY</b>
<b>DATE: 6/14/2023</b>

## GEMINI

**Gemini Isolator Kit  
GIK  
Rubber In Shear**



### PARTS LIST

Part Name	Quantity
Isolator Bushings	4
Flanged 1/4" x 20 nuts	8
Eyelets	4

Total Load Rating = 160

### Dimensions (inches)

Mark	Qty	Description	Part #	A
EF-1	1	GEMINI ISOLATO	GIK	4