

EXISTING CONDITIONS SHOWN ARE FROM PREVIOUS DRAWINGS. MECHANICAL CONTRACTOR SHALL FIELD VERIFY EXACT LOCATIONS OF ALL DUCT AND DIFFUSERS. IF MAJOR DIFFERENCES OCCUR IN FIELD, CONTACT CHICK-FIL-A CONSTRUCTION MANAGER.

**DEMOLITION NOTES**

- ① CONTRACTOR IS RESPONSIBLE FOR OBTAINING ALL NECESSARY PERMITS AND PAYING ALL APPLICABLE FEES.
- ② DISPOSAL OF EQUIPMENT AND MATERIALS REQUIRED TO BE REMOVED SHALL BE THE RESPONSIBILITY OF THE CONTRACTOR PERFORMING THE WORK.
- ③ DE-ENERGIZE ALL ELECTRICAL CIRCUITS RELATED TO EQUIPMENT THAT WILL BE MOVED OR REMOVED PRIOR TO STARTING WORK. DE-ENERGIZED CIRCUITS SHALL BE PROTECTED WITH LOCKING DEVICES USING APPROPRIATE WARNING LABELS.
- ④ MECHANICAL CONTRACTOR SHALL BE RESPONSIBLE FOR PATCHING ROOF AFTER REMOVAL OF EXISTING MECHANICAL EQUIPMENT. SEE ARCHITECTURAL DRAWINGS FOR ROOF PATCHING REQUIREMENTS.
- ⑤ EXCEPT WHERE NOTED, EXISTING REMOTE TEMPERATURE &/OR HUMIDITY SENSORS TO REMAIN. IF DURING RENOVATION PURPOSES CONTROLS SHALL BE TAKEN DOWN, MECHANICAL CONTRACTOR SHALL BE RESPONSIBLE FOR REINSTALLING AND TO PROVIDE ANY ADDITIONAL WIRING NEEDED. VERIFY EXISTING UNIT CONTROLS ARE IN GOOD WORKING ORDER. IF NOT, CONTACT CHICK-FIL-A CONSTRUCTION MANAGER.
- ⑥ MECHANICAL CONTRACTOR SHALL REPLACE FILTERS FOR ALL RTUS AT END OF PROJECT AND PRIOR TO REOPENING. MC TO PROVIDE PROPOSAL TO FACILITIES MANAGER, CONSTRUCTION MANAGER, AND OPERATOR TO CORRECT EXISTING RTU PUNCH ITEMS IDENTIFIED BY HALTON.
- ⑦ CONTRACTOR SHALL INDICATE SALVAGE VALUE IN BID FOR ROOFTOP UNITS BEING REPLACED.

**I MECHANICAL DEMOLITION FLOOR PLAN**  
SCALE: 1/4"=1'-0"

DEMOLITION LEGEND	
	EXISTING EQUIPMENT, DUCT, AIR DEVICE ETC. TO REMAIN INTACT
	EQUIPMENT, DUCT, AIR DEVICE ETC. TO BE DEMOLISHED

**DEMOLITION KEY NOTES**

- ① DETACH AND DEMOLISH EXISTING AIR DEVICE. SECURE DUCT ABOVE CEILING GRID FOR RE-CONNECTION. SEE SHEET M.I.I FOR NEW CONNECTION.
- ② DEMOLISH EXISTING HOOD, ALL ASSOCIATED GREASE DUCT, CAPTURE JET FAN AND DIFFUSER (IF EXISTING), EXHAUST FAN, AND ITS ASSOCIATED ROOF CURB. PATCH AND REPAIR ROOF TO MATCH SURROUNDING CONSTRUCTION.
- ③ DEMOLISH EXISTING KITCHEN A/C UNIT, UNIT CONTROLS (REMOTE TEMP SENSOR, REMOTE HUMIDITY SENSOR, T'STAT, REMOTE SMOKE DETECTOR TEST/RESET STATION, ETC.), SUPPLY/RETURN AIR DROPS, ALL ASSOCIATED SUPPLY/RETURN DUCT & AIR DEVICES (UNLESS NOTED OTHERWISE). COVER ROOF CURB WEATHER-TIGHT FOR RE-USE. SEE SHEET M.I.I.
- ④ EXISTING REMOTE TEMPERATURE AND/OR REMOTE HUMIDITY SENSORS TO BE REPLACED WITH NEW. DEMOLISH ALL ASSOCIATED CONTROL WIRING. SEE SHEET M.I.I FOR FURTHER INFORMATION.
- ⑤ EXISTING RTU TO BE REPLACED WITH NEW AS SCHEDULED ON SHEET M3.I. DEMOLISH EXISTING RTU UNLESS NOTED OTHERWISE. DEMOLISH ALL EXISTING UNIT CONTROLS (REMOTE TEMP SENSOR, REMOTE HUMIDITY SENSOR, T'STAT, REMOTE SMOKE DETECTOR ANNUNCIATOR, ETC.). EXISTING ROOF CURB AND SUPPLY & RETURN DUCT TO REMAIN (UNLESS NOTED OTHERWISE). COVER EXISTING ROOF CURB WEATHER-TIGHT FOR RE-USE. GC BID ALTERNATE MATERIALS AND LABOR TO BE BILLED UNDER SEPARATE CONTRACT AND COORDINATED VIA WORK ORDER WITH FEQ SPECIALIST.
- ⑥ DEMOLISH EXISTING AIR DEVICE AND ASSOCIATED BRANCH DUCT AS SHOWN. SEAL DUCT AIR-TIGHT.

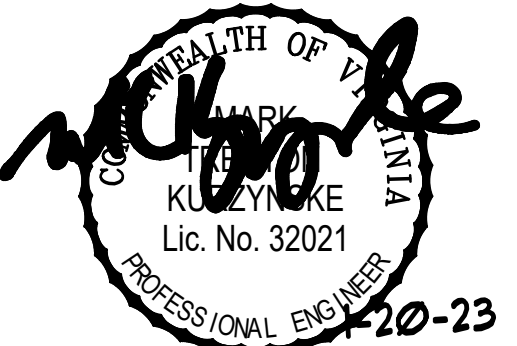


*Chick-fil-A*

**Chick-fil-A**  
5200 Buffington Road  
Atlanta, Georgia 30349



**Kurzynske & Associates**  
CONSULTING ENGINEERS  
2705 Lebanon Pike - Suite One  
Nashville, Tennessee 37214  
Telephone: (615) 255-8203



**CHICK-FIL-A**  
**WAYNESBORO FSU**  
710 SHENANDOAH VILLAGE DR  
WAYNESBORO, VA 22980

**FSR#02577**

BUILDING TYPE / SIZE: S08C  
RELEASE: v12.20

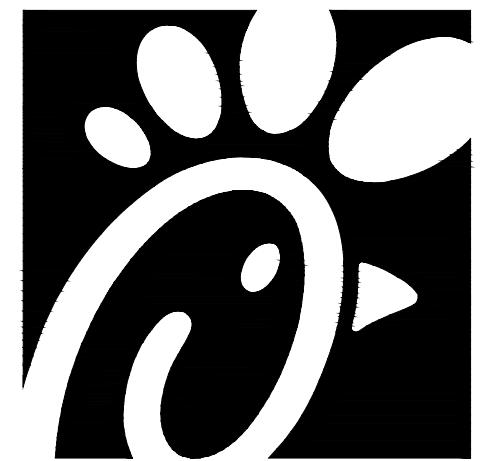
REVISION SCHEDULE		
NO.	DATE	DESCRIPTION
2	08/10/22	Playground Removal

CONSULTANT PROJECT # 22087.HF.R  
PRINTED FOR CONSTRUCTION  
DATE 06/17/2022  
DRAWN BY DSF

Information contained on this drawing and in all digital files produced for above named project may not be reproduced in any manner without express written or verbal consent from authorized project representatives.  
SHEET  
MECHANICAL  
DEMO PLAN  
SHEET NUMBER

**CONSTRUCTION**

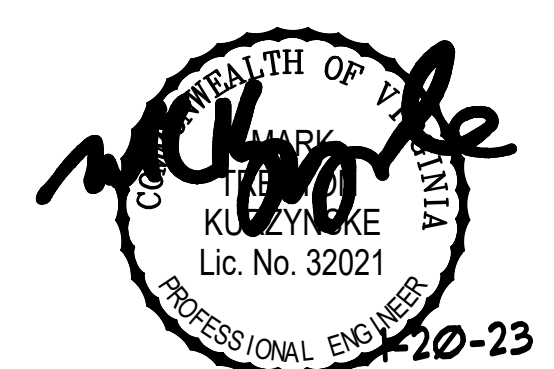
**M0.1**



Chick-fil-A

Chick-fil-A  
5200 Buffington Road  
Atlanta, Georgia 30349

Kurzynske & Associates  
CONSULTING ENGINEERS  
2705 Lebanon Pike - Suite One  
Nashville, Tennessee 37214  
Telephone: (615) 255-5203



**CHICK-FIL-A**  
WAYNESBORO FSU  
710 SHENANDOAH VILLAGE DR  
WAYNESBORO, VA 22980

**FSR#02577**

BUILDING TYPE / SIZE: S08C  
RELEASE: v12.20

REVISION SCHEDULE

NO.	DATE	DESCRIPTION
2	08/10/22	Playground Removal
5	11/01/22	Elevation Revision

CONSULTANT PROJECT # 22087.HF.R  
PRINTED FOR CONSTRUCTION  
DATE 06/17/2022  
DRAWN BY DSF

MECHANICAL FLOOR PLAN  
SHEET NUMBER

**M1.1**

**H.E.S. SYSTEM**  
MECHANICAL CONTRACTOR TO PROVIDE AND INSTALL SUNCOAST H.E.S. SYSTEM FOR ALL NEW HOODS. SEE HOOD FAN/EQUIPMENT INTERLOCK WIRING DIAGRAM ON SHEET M4.1 FOR MORE INFORMATION.

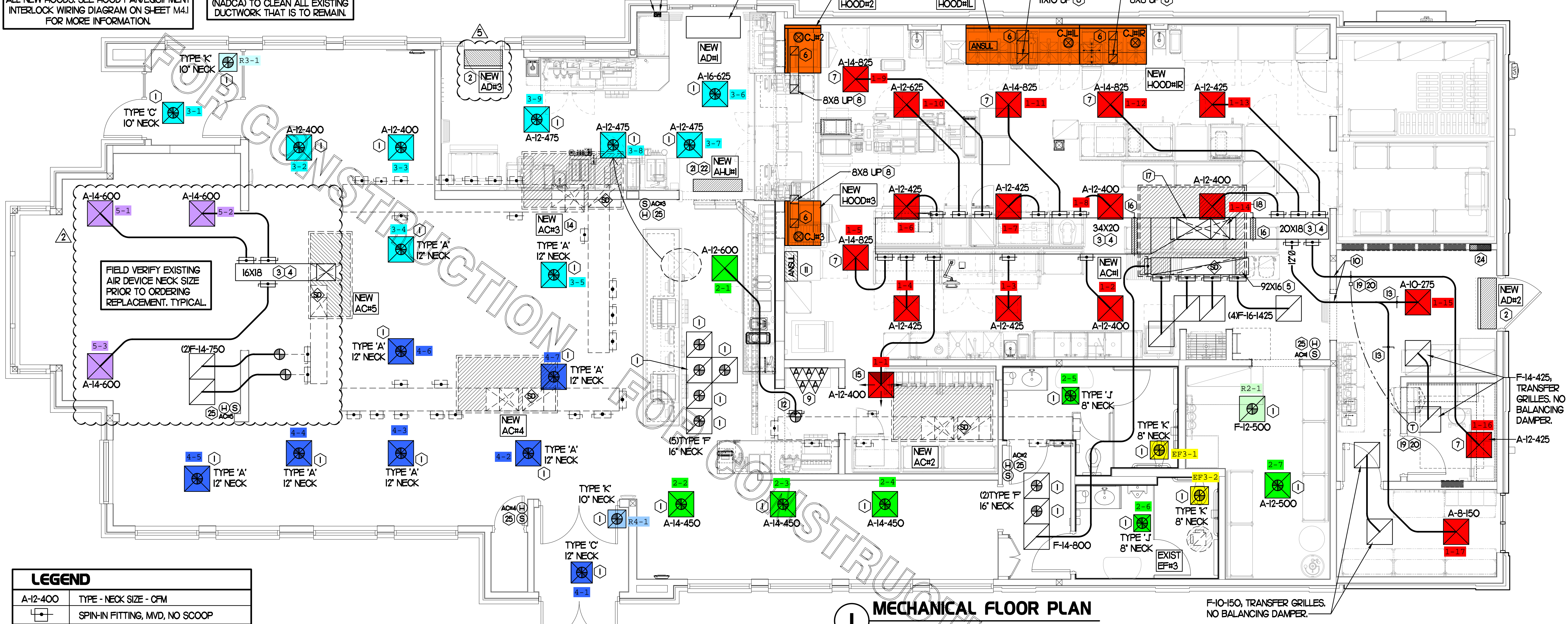
G.C. TO HIRE VENTILATION CLEANING CONTRACTOR CERTIFIED BY NATIONAL AIR DUCT CLEANERS ASSOCIATION (NADCA) TO CLEAN ALL EXISTING DUCTWORK THAT IS TO REMAIN.

AIR CURTAIN REMOTE WALL SWITCHES BY MECHANICAL. REFER TO AIR DOOR SCHEDULE AND AIR CURTAIN WIRING DIAGRAM FOR FURTHER INFORMATION. COORDINATE EXACT LOCATION FOR SWITCHES WITH KITCHEN EQUIPMENT AND PLANS.

NEW AIR CURTAIN, AD#1 MOUNTED IN CEILING GRID, CENTERED ON THE DOOR, AT 4" OFF THE EXTERIOR WALL. MECHANICAL CONTRACTOR SHALL ADJUST AIR DEFLECTORS TOWARD AIR DIVERTER BOX.

HOLD DUCT AT ACH# AS HIGH AS POSSIBLE DUE TO LIMITED CLEARANCE ABOVE CEILING.

EXISTING CONDITIONS SHOWN ARE FROM PREVIOUS DRAWINGS. MECHANICAL CONTRACTOR SHALL FIELD VERIFY EXACT LOCATIONS OF ALL DUCT AND DIFFUSERS. IF MAJOR DIFFERENCES OCCUR IN FIELD, CONTACT CHICK-FIL-A CONSTRUCTION MANAGER.



**LEGEND**

A-12-400	TYPE - NECK SIZE - CFM
+	SPIN-IN FITTING, MVD, NO SCOOP
⊙	REMOTE TEMPERATURE SENSOR
⊕	REMOTE HUMIDITY SENSOR
⊗	SMOKE DETECTOR
Ⓐ	GREASE ACCESS DOOR TYPE
→	DIRECTION OF THROW
①	KEY NOTE REFERENCE
+	EXISTING START COLLAR
+	EXISTING RUNNOUT TO REMAIN
+	EXISTING RETURN/EXHAUST (TYP.)
+	EXISTING SUPPLY DIFFUSER (TYP.)
+	NEW RETURN/EXHAUST, UNO. (TYP.)
+	NEW SUPPLY DIFFUSER, UNO. (TYP.)
+	NEW DUCT (TYP.)
+	SMOKE DETECTOR TEST/RESET STATION

**SHEET NOTES**

- DUCT SIZES SERVING DIFFUSERS AND GRILLES ARE SAME SIZE AS DIFFUSER OR GRILLE NECK UNLESS NOTED OTHERWISE.
- REFER TO ELEVATIONS ON M2.1 AND HOOD DETAILS ON M4.1 FOR CAPTURE-JET FANS DUCTING REQUIREMENTS.
- HARDPIPE SHALL BE USED FOR ALL TAKE-OFFS EXCEPT WHERE ALLOWED BY DETAIL 1/M3.1. USE OF FLEXIBLE DUCT SHALL BE LIMITED TO THOSE SITUATIONS WHERE NO OTHER MEANS TO ACCOMPLISH ROUTING IS POSSIBLE.
- COORDINATE NEW WORK WITH EXISTING CONDUITS, STRUCTURE AND PIPING. FIELD VERIFY EXISTING CONDITIONS PRIOR TO COMMENCING WORK. CONTRACTOR TO NOTIFY DESIGN TEAM WITHOUT DELAY IF ACTUAL LOCATION OF EXISTING MECHANICAL EQUIPMENT DOES NOT MATCH FLOOR PLAN.
- MECHANICAL CONTRACTOR SHALL BALANCE HVAC SYSTEM AS SHOWN ON THIS PLAN & IN SCHEDULES ON SHEET M3.1. IF AIRFLOWS DIFFER BY MORE THAN 5%, CONTACT CFA CONSTRUCTION MANAGER. TEST AND BALANCE REPORT SHALL BE DONE PRIOR TO STORE TURNOVER AND SUBMITTED TO CFA'S CONSTRUCTION MANAGER.

**KEY NOTES (THIS SHEET ONLY)**

- CONNECT NEW AIR DEVICE TO EXISTING TAKE-OFF. IF NECESSARY, MECHANICAL CONTRACTOR SHALL PROVIDE AND INSTALL NEW DUCT IN ORDER TO MAKE CONNECTION TO AIR DEVICE IN NEW LOCATION. ANY FLEX DUCT USED SHALL NOT BE LONGER THAN 4'-0". SEE DETAIL 1/M3.1. COORDINATE AIR DEVICE LOCATIONS WITH ARCHITECTURAL REFLECTED CEILING PLAN.
- AIR CURTAIN MOUNTED OVER DOOR HEADER AT 7'-2" AFF TO BOTTOM OF UNIT. PROVIDE BLOCKING IN WALL BEHIND AIR CURTAIN. USE FACTORY PRE-PUNCHED MOUNTING HOLES ON BACK SIDE OF AIR CURTAIN ONLY. ATTACH AIR CURTAIN TO WALL USING 3/8" LAG BOLTS, LENGTH AS REQUIRED TO FULLY PENETRATE BLOCKING. LOCATE MAGNETIC CONTACT TYPE MICROSWITCH IN DOOR FRAME ON STRIKE SIDE.
- BRANCH TAKE-OFFS SHALL NOT BE LOCATED CLOSER THAN 3'-0" FROM ANY ELBOW INCLUDING THE SUPPLY AIR DROP FROM CURB.
- TRANSITION IN VERTICAL DROP FROM FULL SIZE OF CURB OPENING TO SIZE SHOWN. TRANSITION WITHIN CURB WHERE REQUIRED TO AVOID STRUCTURE. PROVIDE TURNING VANES IN ELBOWS, INCLUDING THE SUPPLY AIR DROP FROM UNIT.
- TRANSITION IN VERTICAL DROP FROM FULL SIZE OF CURB OPENING TO SIZE SHOWN. TRANSITION WITHIN CURB WHERE REQUIRED TO AVOID STRUCTURE. NO TURNING VANES IN ELBOW.
- HALTON MBD DAMPER AT HOOD COLLAR BY MECHANICAL CONTRACTOR. REFER TO SHEET M2.1 AND M4.1 FOR FURTHER INFORMATION.
- MECHANICAL CONTRACTOR TO ADJUST PATTERN DEFLECTORS TO THROW STRAIGHT DOWN.
- GREASE DUCT UP THRU ROOF FROM FULL SIZE OF MBD COLLAR. OFFSETS THRU ROOF NOT TO BE GREATER THAN 45 DEGREES. SEE SHEET M1.2 FOR CONTINUATION.
- MOUNT NEW SMOKE DETECTOR TEST/RESET STATIONS FOR ALL A/C UNITS ON WALL. COORDINATE EXACT LOCATION WITH KITCHEN ELEVATIONS AND ELECTRICAL. CONTACT SUNCOAST ENVIRONMENTAL CONTROLS AT 1-877-544-6679 TO PURCHASE A NEW SMOKE DETECTOR TEST/RESET STATION FOR EACH RTU.
- ROUTE DUCT BETWEEN WALL STUDS ABOVE CEILING. COORDINATE WITH ARCH AND STRUCTURAL FOR EXACT LOCATION. USE 1" WRAP AT WALL PENETRATION.
- ANSUL UTILITY CABINET. LOCATE TOP OF CABINET 0'-2" BELOW CEILING. COORDINATE FINAL MOUNTING LOCATION WITH KITCHEN EQUIPMENT.
- PROVIDE & INSTALL NEW SPIN-IN COLLAR AND ROUTE NEW DUCT TO NEW GRILLE AS SHOWN.
- RUSKIN MODEL MDRS25 OR EQUIVALENT MANUAL VOLUME DAMPER WITH LOCKING QUADRANT HANDLE.
- GC TO CONFIRM EXACT LOCATION OF ACH#3 MAIN DUCT RUNS RELATIVE TO PROPOSED NEW WALL PRIOR TO START OF CONSTRUCTION. CONTACT JLL PM OR AOR IF DETERMINED THERE IS A CONFLICT.
- MECHANICAL CONTRACTOR TO CLOSE THE AIR PATTERN DEFLECTORS ON THE SHADED SIDE.
- PROVIDE RUSKIN CD35 MANUAL BALANCING DAMPER WITH 6" MAXIMUM BLADE WIDTH, OPPOSED BLADE ACTION, LOCKING QUADRANT HANDLE WITH 2" STANDOFF AND 16 GA GALVANIZED BLADE AND FRAME CONSTRUCTION.

**TOTAL AIR BALANCE SCHEDULE**

EQUIPMENT MARK	ACH# (NEW)	ACH#2 (NEW)	ACH#3 (NEW)	ACH#4 (NEW)	ACH#5 (NEW)	EF#1 (NEW)	EF#2 (NEW)	EF#3 (EXIST)	TOTAL
SERVES	KITCHEN	SIDE DINING	MAIN DINING	MAIN DINING	PLAY AREA	HOOD#1L	HOOD#2	REST-ROOMS	
SUPPLY AIR CFM	8,500	2,830	4,000	2,765	1,800				19,895
RETURN AIR CFM	6,500	2,050	2,970	2,135	1,500				15,155
OUTSIDE AIR CFM	2,000	780	1,030	630	300				+4,740
EXHAUST CFM						1,913	1,402	400	-3,715
PRESSURIZATION									+1,025
REMARKS	ADJUST AND VERIFY BALANCE OF ALL HVAC EQUIPMENT IS AS SHOWN IN ORDER TO MAINTAIN BUILDING AIR BALANCE.								

- 20X34 VERTICAL DROP. PROVIDE TURNING VANES IN ELBOW. ELBOW TO BE PARTIALLY LOCATED WITHIN STRUCTURE BOTTOM OF ELBOW TO BE AT SAME ELEVATION AS BOTTOM OF 34X20 SUPPLY MAIN. 34X20 SUPPLY MAIN TO BE LOCATED ENTIRELY BELOW JOISTS. HOLD 34X20 SUPPLY MAIN AS HIGH AS POSSIBLE DUE TO LIMITED CLEARANCE.
- 20X18 VERTICAL DROP. PROVIDE TURNING VANES IN ELBOW. 20X18 SUPPLY MAIN TO BE LOCATED ENTIRELY BELOW JOISTS. HOLD 20X18 SUPPLY MAIN AS HIGH AS POSSIBLE DUE TO LIMITED CLEARANCE.
- YOUNG REGULATOR 1/2" MODEL 2010 ROUND ZONE DAMPER WITH MODEL T-312CE AUTOMATIC CHANGEOVER THERMOSTAT. MOUNT TSTAT AT 4'-0" AFF. POWER OPEN/SPRING CLOSE. ADJUST MECHANICAL LIMIT FOR 50 CFM MINIMUM AIRFLOW. CHICK-FIL-A HAS A NATIONAL ACCOUNT WITH TOM BARRROW COMPANY FOR THE ZONE DAMPER. THE MECHANICAL CONTRACTOR SHALL PURCHASE THE ZONE DAMPER DIRECTLY FROM TOM BARRROW COMPANY. CONTACT MR. SCOTT GEORGE AT 404-351-1010, FOR PRICING AND AVAILABILITY. ZONE DAMPERS NOT PURCHASED THRU TOM BARRROW COMPANY WILL NOT BE ACCEPTED.
- PROVIDE 120V/24V 50 VA TRANSFORMER TO SERVE YOUNG REGULATOR ZONE DAMPER ACTUATOR AND THERMOSTAT. POWER TRANSFORMER FROM 120V POWER CIRCUIT THAT REMAINS LIVE 24/7. PROVIDE ALL NECESSARY WIRING AND COMPONENTS TO MAKE CONTROL AND POWER CONNECTIONS TO TRANSFORMER, ZONE DAMPER, AND THERMOSTAT PER MANUFACTURER'S IOM. SEE DETAIL ON SHEET M4.1 FOR MORE INFORMATION.
- MOUNT AIR HANDLER ON OVER-HEAD WALL ABOVE CASED OPENING. MOUNT UNIT AT 12" ABOVE CASED OPENING. ROUTE REFRIGERANT PIPING ABOVE CEILING AND UP THRU ROOF TO CONDENSING UNIT. CUH. SEE SHEET M1.2 FOR CONDENSING UNIT LOCATION. REFRIGERANT PIPING BELOW ROOF SHALL BE HIDDEN WITHIN WALLS AND CEILING.
- ROUTE CONDENSATE ABOVE CEILING FROM AHU#1 AND DOWN IN WALL CAVITY TO EXIT POINT 12" ABOVE FLOOR DRAIN TO TERMINATE INTO FLOOR DRAIN LOCATED BEHIND ICE MAKER IN DRIVE THRU WITH CODE APPROVED AIR GAP. COORDINATE EXACT LOCATION OF DRAIN WITH PLUMBING PLANS. CONDENSATE PIPING SHALL BE TYPE K COPPER WITH 1/2" ARMAFLEX INSULATION. CONDENSATE MUST SLOPE MIN 1/8" PER FOOT TO TERMINATION POINT. CONTRACTOR SHALL INSTALL A CONDENSATE LIFT PUMP IN ORDER TO ROUTE CONDENSATE ABOVE CEILING.
- MOUNT AHU#1 THERMOSTAT ON WALL NEXT TO AD#1 REMOTE WALL SWITCHES. SEE SCHEDULE ON SHEET M3.1 FOR INTERLOCK WITH T500 PANEL.
- ELECTRICAL CONTRACTOR TO PURCHASE AND INSTALL NEW CFA T500 TEMP CONTROL PANEL WITH AUTOMATIC TIMER FOR LIGHTING CONTROLS AND 6-THERMOSTAT TEMP CONTROL CABINET. COORDINATE WITH ELECTRICAL CONTRACTOR FOR NEW LOCATION OF TEMP CONTROL CABINET. CONTROL WIRING TERMINATIONS BETWEEN NEW THERMOSTATS, NEW SENSORS, AND NEW/EXISTING RTUS BY MECHANICAL CONTRACTOR. REFER TO WIRING DIAGRAM ON SHEET M4.1.
- MOUNT NEW REMOTE TEMP SENSOR AND NEW LENNOX HUMIDITY SENSOR FOR ROOFTOP UNIT AS NOTED BELOW (OR ABOVE WAINSCOTING IF APPLICABLE). ROUTE NEW WIRING FOR NEW REMOTE TEMP SENSOR TO NEW TSTAT IN CFA T500 PANEL. ROUTE NEW WIRING FOR NEW LENNOX HUMIDITY SENSOR TO UNIT ON ROOF. REFER TO WIRING DIAGRAM ON SHEET M4.1.
  - ACH#1 MOUNT NEW REMOTE TEMP SENSOR ON WALL AT 5'-8" AFF. COORDINATE FINAL MOUNTING LOCATION IN FIELD WITH KITCHEN EQUIPMENT, SHELVING, AND ELECTRICAL. MOUNT NEW LENNOX HUMIDITY SENSOR DIRECTLY ABOVE REMOTE TEMP SENSOR.
  - ACH#2 & ACH#4 MOUNT NEW SENSORS IN THE SAME LOCATION AS DEMOLISHED SENSORS.
  - ACH#3 & ACH#5 MOUNT NEW REMOTE TEMP SENSOR ON WALL AT 5'-0" AFF. MOUNT NEW LENNOX HUMIDITY SENSOR DIRECTLY ABOVE REMOTE TEMP SENSOR.

CONSTRUCTION

FABRICATE 1/2" GA STAINLESS NOZZLE. NOZZLE INLET FULL SIZE OF FAN DISCHARGE. 1'-0" MINIMUM NOZZLE HEIGHT. TERMINATE 0'-2" ABOVE HIGHEST PARAPET WITHIN 10'-0".

**KEYED NOTES**

- ① EQUIPMENT CURB WITH REINFORCED BASE AND STEEL CURB CAP PROVIDED BY TOM BARRON COMPANY. WIDTH OF CURB SHALL BE 4" WIDER THAN FAN FOOTPRINT IN BOTH DIRECTIONS. HEIGHT OF CURB SHALL BE SUCH THAT NO PART OF ANY DUCT TO BE WITHIN 18" OF ROOF SURFACE. PROVIDE FACTORY EQUIPMENT RAILS WELDED TO CAP.
- ② ALL DUCT ON ROOF TO BE SUPPORTED WITH MIRO 6-DS DUCT SUPPORT SYSTEM AT 6'-0" INTERVALS MAXIMUM. PROVIDE MIRO SUPPORT PADS AT EACH SUPPORT. ATTACH SUPPORT TO DUCT. PROVIDE A DUCT SUPPORT STAND AT EACH ROOF PENETRATION.
- ③ 12" HIGH INSULATED CURB PROVIDED BY TOM BARRON COMPANY. MECHANICAL CONTRACTOR TO PROVIDE 1/2" GA MINIMUM CURB CAP.

6"x3" HAT CHANNEL EQUIPMENT RAILS FACTORY PROVIDED AND WELDED ON TOP OF CURB CAP. BOLT FAN TO HAT CHANNELS USING 3 FASTENERS ON EACH SIDE OF MOTOR SECTION AND ONE ON EACH SIDE OF THE SCROLL HOUSING USING SELF DRILLING 1/4"-14 1/2" HEX HEAD SCREW EQUAL TO ELCO EAF841 DRILL-FLEX.

1/4"-20-3" HEX WASHER HEAD SHEET METAL SCREW EQUAL TO ELCO EDT442 DRILL. MINIMUM 1/2" EMBEDMENT IN BLOCKING BENEATH CURB. PROVIDE TWO FASTENERS ON EACH SIDE OF CURB.

BOLTED AND GASKETED TO FAN. 1500F RATED.

BOLTED AND GASKETED TO FAN. 1500F RATED.

SEE M-250 FOR GREASE EXHAUST DUCT SIZE.

SEE ROOF PLAN FOR GREASE ACCESS DOOR QUANTITY AND TYPE, TYP.

SEE ROOF PLAN FOR GREASE ACCESS DOOR QUANTITY AND TYPE, TYP.

FULL PERIMETER LIQUID TIGHT WELD BETWEEN CURB CAP AND DUCT.

INSTALL ROOFTOP SOLUTIONS G2 DRIP GUARD AS CLOSE AS POSSIBLE TO FAN SCROLL DRAIN. EXTEND DRAIN TO CENTER OF DRIP GUARD.

PROVIDE 1.5" PCF BATT INSULATION. MINIMUM 4" THICK.

WHERE GREATER THAN 90 MPH GENERAL WIND SPEED, TIE-DOWN STRAP 2" WIDE 1/2" GA. GALV STEEL STRAP WITH #10-16 SS SHEET METAL SCREW AT 4" FROM CORNER AND 16" OC INTO UNIT RAIL AND INTO CURB BLOCKING. SEAL ALL EXPOSED FASTENERS WATER TIGHT.

BLOCKING BY GENERAL CONTRACTOR.

SUPPORT DUCT FROM STRUCTURE WITH 1/2"x1/2" STEEL ANGLE OR B-LINE #24 STRUT AND 3/8" ATR ON 6'-0" CENTERS, TYP.

CURBS FOR DUCTS: 22.5' SQ. INSIDE CLEAR MINIMUM

**2 KITCHEN HOOD EXHAUST FAN - UTILITY SET FAN**  
NO SCALE

SET CONDENSING UNIT ON ROOF USING TWO CURBS PLUS CPES-1 EQUIPMENT CURBS. SECURE CONDENSING UNIT TO CURBS ARRANGED IN PARALLEL. SET LONG SIDE OF CURB PARALLEL TO ROOF SLOPE. FLASH INTO ROOF BY GC. COORDINATE EXACT LOCATION WITH STRUCTURAL DRAWINGS. ALL MAINTENANCE CLEARANCES OF NEW AND EXISTING EQUIPMENT SHALL BE MAINTAINED.

**SHEET NOTES**

- ① ALL DUCTWORK AND UNFINISHED METAL ON ROOF EXCEPT STAINLESS SHALL BE PREPARED WITH TWO COATS OF SHERWIN WILLIAMS B66-200 SERIES DTM WHITE ACRYLIC SEMI-GLOSS INDUSTRIAL MAINTENANCE COATING, DEGREASE AND PRIME BARE METAL SURFACE WITH ONE COAT OF SHERWIN WILLIAMS DTM PRIMER PRIOR TO PAINTING.
- ② AT EACH PIECE OF ROOF EQUIPMENT, PROVIDE A PLASTIC ENGRAVED LABEL WITH 1" HIGH WHITE LETTERS ON A BLACK BACKGROUND. THE LABEL IS TO HAVE A SELF-ADHESIVE BACKING.
- ③ MAINTAIN 18" CLEARANCE FROM GREASE EXHAUST DUCTWORK ABOVE ROOF TO ANY COMBUSTIBLE CONSTRUCTION INCLUDING PARAPET WALLS.

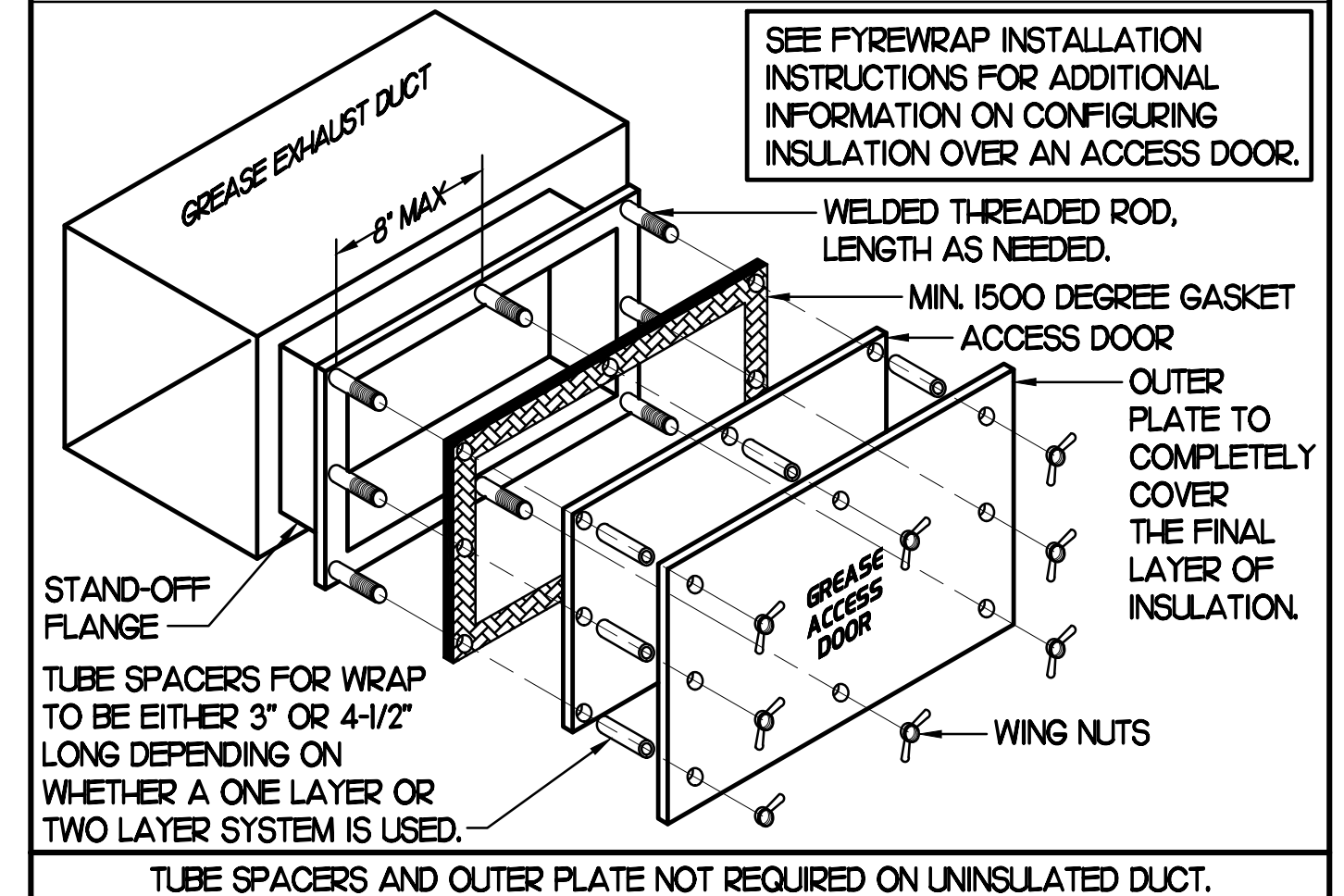
**KEY NOTES**

- ① FABRICATE DISCHARGE AIR NOZZLE. LOCATE EXHAUST TERMINATION A MINIMUM 10'-0" FROM OUTSIDE AIR INTAKES. SEE DETAIL 2 THIS SHEET.
- ② GREASE EXHAUST DUCT LOCATED ON ROOF SHALL SLOPE 1/4" PER FOOT TOWARDS THE HOOD, THE FAN, OR A COMBINATION OF THE TWO SUCH THAT NO PORTION OF THE RADIUS ELBOW AT THE CURB IS BELOW THE CURB CAP AND SUCH THAT THE FAN BASE SETS DIRECTLY ON THE CURB RAILS. THE BOTTOM OF THE RADIUS ELBOW MAY BE EVEN FLUSH WITH THE CURB CAP, BUT NOT BELOW THE CAP. THE DUCT AT THE FAN MUST BE CENTERED ON THE FAN INLET. THE MC MAY ADD A VERTICAL RISER AT THE RADIUS ELBOW LOCATED AT THE DUCT CURB AS NEEDED IN ORDER TO CENTER THE DUCT ON THE FAN INLET.

**GREASE ACCESS DOOR SCHEDULE**

MARK	OPENING SIZE	DOOR SIZE	REMARKS
A	7.5H X 14W	9.5H X 16W	1
B	5.5H X 14W	7.5H X 16W	1
C	9.5H X 14W	11.5H X 16W	1
D	8.5H X 14W	10.5H X 16W	1

1. ACCESS DOORS SHALL BE UL-1978 LISTED OR FIELD FABRICATED, REQUIRE NO TOOLS FOR REMOVAL AND MEET THE REQUIREMENTS OF THE CURRENT EDITION OF THE IMC. ACCESS DOOR ASSEMBLY SHALL BE WELDED IN PLACE TO THE GREASE EXHAUST DUCT AND THE ACCESS DOOR SHALL BE SECURED WITH THUMB SCREWS. ACCESS DOORS SHALL BE SEALED WITH A MINIMUM 1500 DEGREE GASKET MATERIAL EQUIVALENT TO THAT MANUFACTURED BY BRETON INDUSTRIES, INC (800) 382-2491.

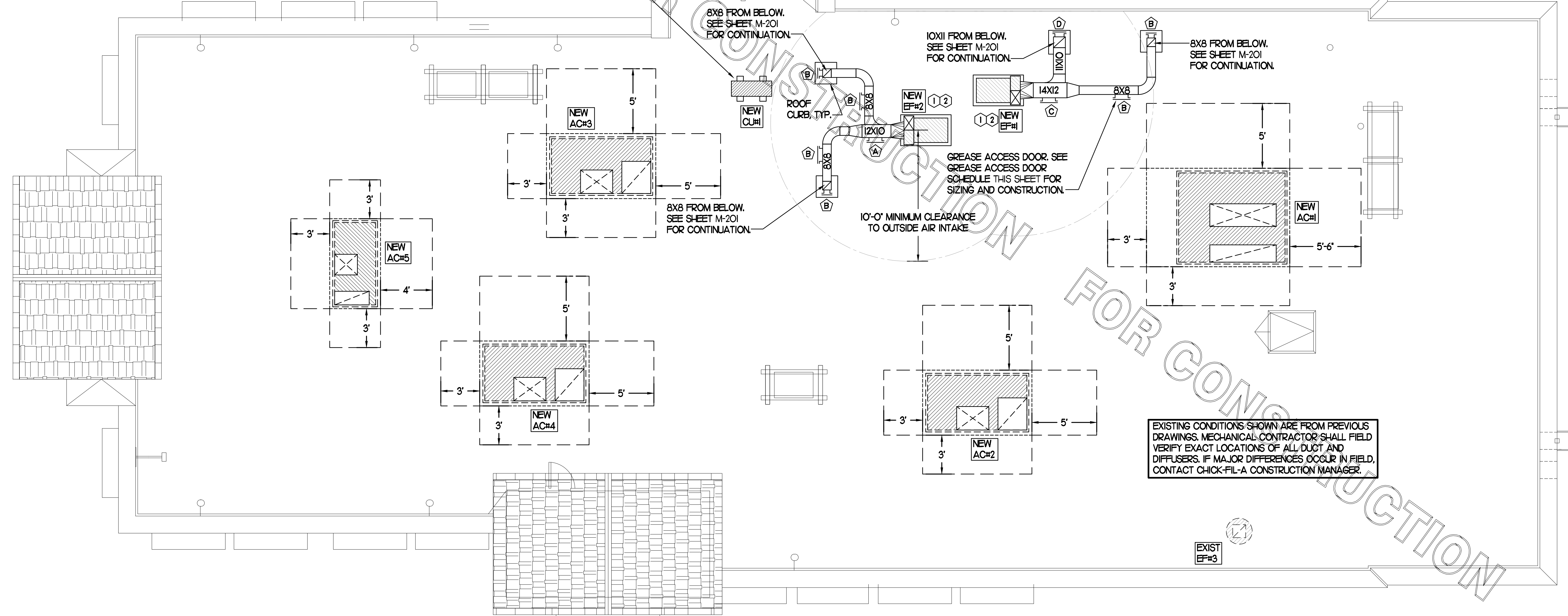


*Chick-fil-A*

**Chick-fil-A**  
5200 Buffington Road  
Atlanta, Georgia 30349



**Kurzynske & Associates**  
CONSULTING ENGINEERS  
2705 Lebanon Pike - Suite One  
Nashville, Tennessee 37214  
Telephone: (615) 255-5203



**1 MECHANICAL ROOF PLAN**  
SCALE: 1/4"=1'-0"

**CHICK-FIL-A**  
**WAYNESBORO FSU**  
710 SHENANDOAH VILLAGE DR  
WAYNESBORO, VA 22980

**FSR#02577**

BUILDING TYPE / SIZE: S08C  
RELEASE: v12.20

REVISION SCHEDULE

NO.	DATE	DESCRIPTION

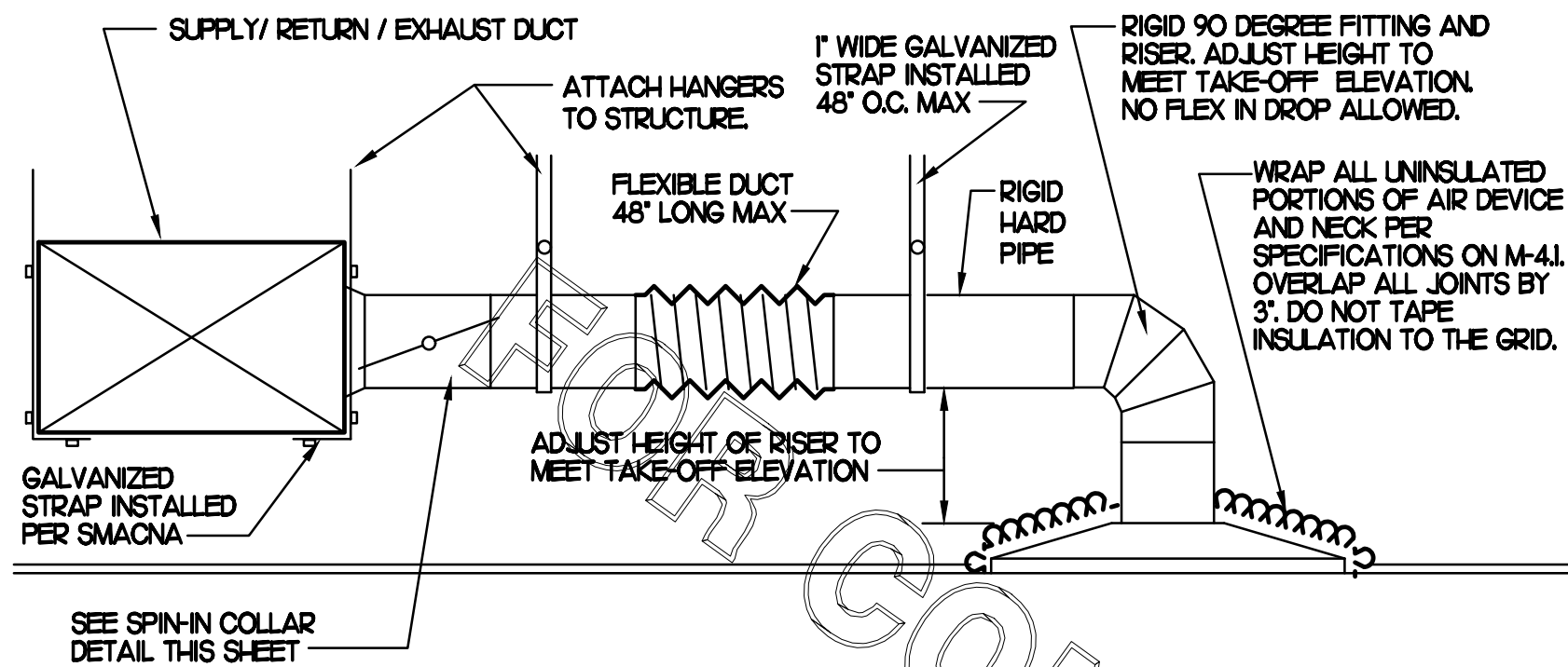
CONSULTANT PROJECT # 22087.HF.R  
PRINTED FOR CONSTRUCTION  
DATE 06/17/2022  
DRAWN BY DSF

Information contained on this drawing and in all digital files produced for above named project may not be reproduced in any manner without express written or verbal consent from authorized project representatives.  
SHEET  
MECHANICAL  
ROOF PLAN  
SHEET NUMBER

**M1.2**

**CONSTRUCTION**

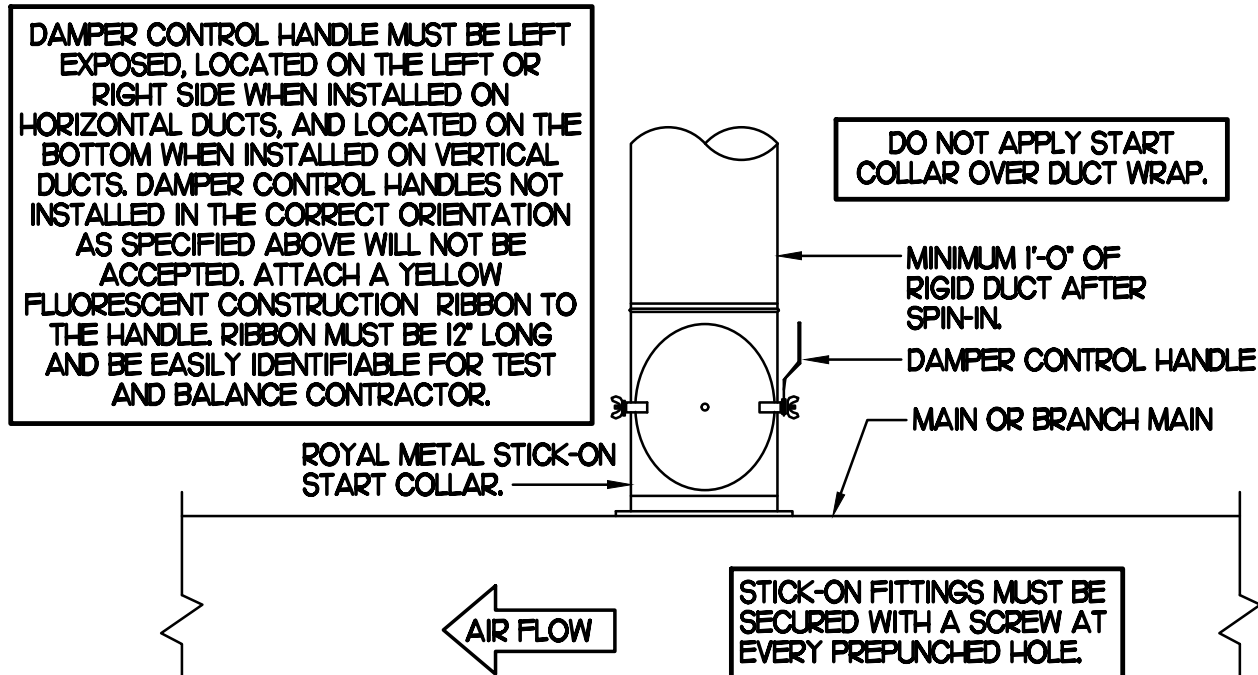




**1 SAG/RAG/GRILLE TAKE-OFF**

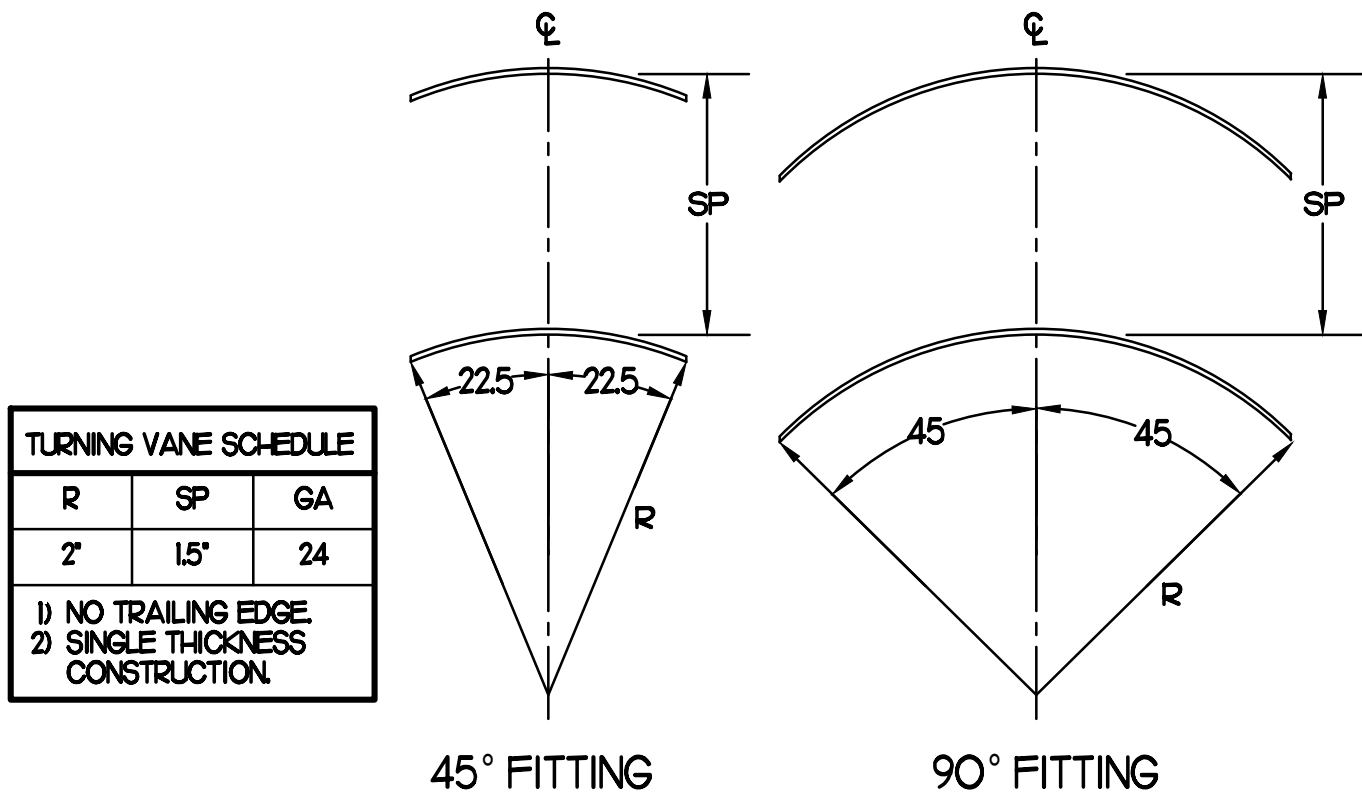
NO SCALE

CHICK-FIL-A HAS A NATIONAL ACCOUNT WITH TOM BARRROW COMPANY FOR THE ROYAL METAL START COLLARS. THE MECHANICAL CONTRACTOR IS REQUIRED TO PURCHASE THE ROYAL METAL START COLLARS DIRECTLY FROM TOM BARRROW COMPANY. CONTACT MR. SCOTT GEORGE AT 404-351-0101 FOR PRICING AND AVAILABILITY. ROYAL METAL START COLLARS NOT PURCHASED THRU TOM BARRROW COMPANY WILL NOT BE ACCEPTED.



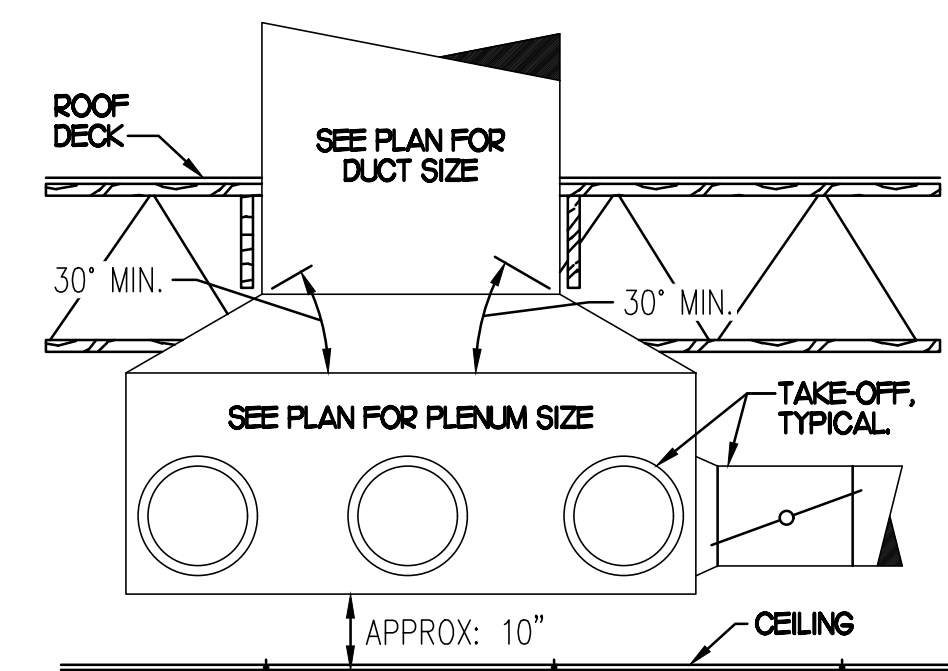
**2 START COLLAR**

NO SCALE



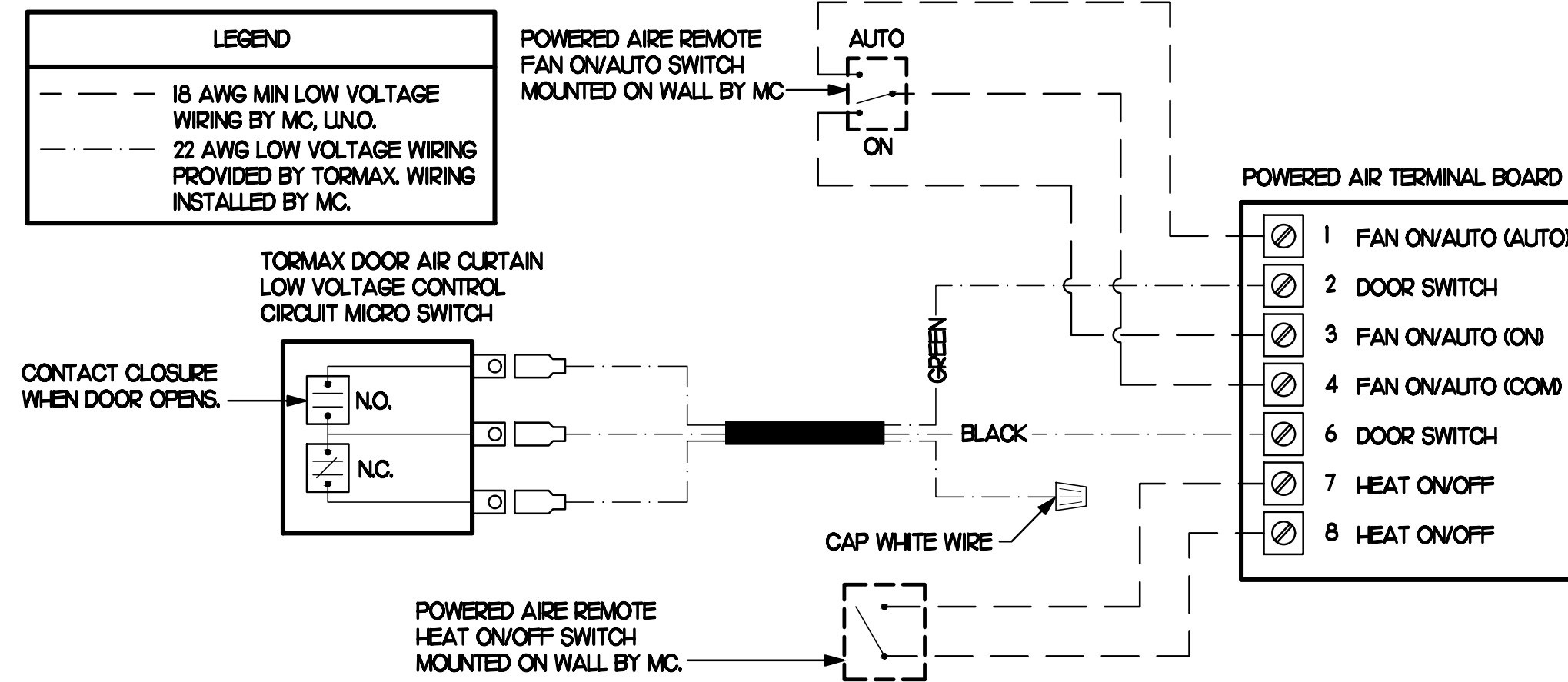
**3 TURNING VANES**

NO SCALE



**5 RETURN DROP GEOMETRY**

NO SCALE



**4 AIR CURTAIN WIRING DIAGRAM**

NO SCALE

**LENNOX FRESH AIR TEMPERING SETUP**

- INSTALL FRESH AIR TEMPERING KIT WIRING HARNESS AS RECOMMENDED BY LENNOX.
- LOCATE SUPPLY AIR TEMPERATURE SENSOR IN SUPPLY DUCT DOWNSTREAM OF FIRST ELBOW. SECURE WIRING TO DUCT OR STRUCTURE WITH RUBBER COATED CLAMPS. DO NOT RUN WIRING INSIDE DUCT WORK. PROTECT ALL WIRING PENETRATIONS WITH RUBBER GROMMETS.
- CHANGE PRODIGY-M3 BOARD CONTROL PARAMETER #156 TO A VALUE OF 66 (OLDER MI-8 IMC BOARD ECTO PARAMETER 6.20 SET TO A VALUE OF 145). THIS WILL PREVENT THE SUPPLY AIR TEMPERATURE FROM DROPPING BELOW 66F DURING HEATING MODE WHEN THERMOSTAT IS NOT ACTIVELY CALLING FOR HEAT. NOTICE - THIS PARAMETER #156 (6.20) MUST BE CHANGED TO ACTIVATE THE FRESH AIR TEMPERING FEATURE.
- CHANGE PRODIGY-M3 BOARD CONTROL PARAMETER #157 TO A VALUE OF 14 (OLDER MI-8 IMC BOARD ECTO PARAMETER 6.21 SET TO A VALUE OF 2). THIS WILL MAKE THE DEADBAND VALUE EQUAL 14F.
- CHANGE PRODIGY-M3 BOARD CONTROL PARAMETER #158 TO A VALUE OF 300 (OLDER MI-8 IMC BOARD ECTO PARAMETER 6.22 SET TO A VALUE OF 37). THIS WILL MAKE THE CYCLE TIME VALUE EQUAL 5 MINUTES.

**AIR DOOR SCHEDULE**

MARK	CFM	VELOCITY	HEATING CAP	HP	AREA SERVED	MODEL	MANUFACTURER	REMARKS
AD#1 (NEW)	1543	2,338	10 KW	3/4	DRIVE THRU	CHA-148B	POWERED-AIRE	2-5
AD#2 (NEW)	3,267	4,220	NA	3/4	REAR DOOR	RBT-148	POWERED-AIRE	1
AD#3 (NEW)	2,899	4,220	NA	3/4	DRIVE THRU DOOR	RBT-136	POWERED-AIRE	1

**NOTES**

- CHICK-FIL-A HAS A NATIONAL ACCOUNT WITH TOM BARRROW COMPANY FOR THE AIR DOORS. THE MECHANICAL CONTRACTOR SHALL PURCHASE THE AIR DOORS DIRECTLY FROM TOM BARRROW COMPANY. CONTACT MR. SCOTT GEORGE AT 404-351-0101 FOR PRICING AND AVAILABILITY. AIR DOORS NOT PURCHASED THRU TOM BARRROW COMPANY WILL NOT BE ACCEPTED.

**REMARKS**

- FACTORY PROVIDED MAGNETIC DOOR CONTACT WITH FACTORY INSTALLED LOW VOLTAGE CONTROLS LOCATED IN AIR DOOR CABINET.
- FACTORY PROVIDED, WIRED, AND UNIT MOUNTED SPEED CONTROLLER LOCATED ABOVE CEILING.
- FACTORY WIRED DISCONNECT.
- FACTORY PROVIDED, FIELD INSTALLED REMOTE WALL SWITCHES FOR HEATING ON/OFF AND FAN ON/OFF SWITCH. SEE AIR CURTAIN WIRING DIAGRAM DETAIL THIS SHEET.
- PROVIDE WITH DIVERTER BOX FROM TOM BARRROW COMPANY. PROVIDE WITH MOUNTING BRACKETS PER MANUFACTURER'S RECOMMENDATIONS. INSTALL PER MANUFACTURER'S MOUNTING INSTRUCTIONS.

**EXHAUST FAN SCHEDULE**

MARK	CFM	ESP	RPM	TP SPEED (CFM)	HP (WATTS)	AREA SERVED	MODEL	MANUFACTURER	REMARKS
EF#1 (NEW)	1,913	0.75	1,331	5,226	3/4	HOOD#1 & HOOD#R	150 OPS	LOREN COOK	H2
EF#2 (NEW)	1,402	0.95	1,199	4,708	3/4	HOOD#2 & HOOD#3	150 OPS	LOREN COOK	H2
EF#3 (EXIST)	400	-	-	-	-	RESTROOMS	-	EXISTING	-

**NOTES**

- GREASE EXHAUST FAN RPM BASED ON 90 DEGREE F AIR AT 1000 FEET ABOVE SEA LEVEL.
- GREASE EXHAUST FANS TO BE UL 762 LISTED.
- CHICK-FIL-A HAS A NATIONAL ACCOUNT WITH TOM BARRROW COMPANY FOR FANCLRB PACKAGE. MECHANICAL CONTRACTOR IS REQUIRED TO PURCHASE THE FANCLRB PACKAGE DIRECTLY FROM TOM BARRROW COMPANY. CONTACT MR. SCOTT GEORGE AT 404-351-0101 FOR PRICING AND AVAILABILITY. FANS AND CLRB'S NOT PURCHASED THRU TOM BARRROW COMPANY WILL NOT BE ACCEPTED.

**REMARKS**

- PROVIDE AND INSTALL ROOFTOP SOLUTIONS G2 DRIP GUARD. MC TO CONTACT ROOFTOP SOLUTIONS AT 800-913-7034
- PROVIDE FACTORY INSTALLED, PRE-WIRED, NEMA 3 NON-FUSED DISCONNECT. COORDINATE WITH E.C.
- INTEGRAL THERMAL OVERLOAD WITH AUTOMATIC RESET.
- UPBLAST, ARRANGEMENT 10, CCW ROTATION. SEE PLANS TO CONFIRM CONFIGURATION.
- PROVIDE FACTORY STEEL FAN WHEEL.
- PROVIDE FACTORY STEEL INLET FLANGE AND INLET COMPANION FLANGE.
- PROVIDE FACTORY WEATHER HOUSING W/ HINGED ACCESS DOOR.
- PROVIDE FACTORY DRAIN CONNECTION.
- PROVIDE FACTORY BOLTED ACCESS DOOR ON SCROLL.
- PROVIDE FACTORY STEEL OUTLET COMPANION FLANGE.
- UTILITY SET FAN CLRB AND ASSOCIATED EXHAUST DUCT CLRB PROVIDED BY TOM BARRROW COMPANY.
- PROVIDE FACTORY BELT DRIVE WITH ADJUSTABLE MOTOR SHEAVE AND SPARE BELT.

**NOTES**

- MECHANICAL CONTRACTOR SHALL PURCHASE THE AIR DEVICES DIRECTLY FROM TOM BARRROW COMPANY. CONTACT MR. SCOTT GEORGE AT 404-351-0101 FOR PRICING AND AVAILABILITY. AIR DEVICES NOT PURCHASED THRU TOM BARRROW COMPANY WILL NOT BE ACCEPTED.

**REMARKS**

- STANDARD OFF WHITE FINISH.
- PROVIDE MODEL VCS3 NECK DAMPER.
- SEE DRAWING M11 FOR THROW.
- PROVIDE MODEL VC07 NECK DAMPER ON GRILLES IN RESTROOMS.
- PROVIDE BACKPAN MC TO SEAL JOINTS WITH MASTIC AND INSULATE EXTERNALLY.
- FIELD INSULATE BACKPAN AS SHOWN ON DETAIL 1/M3.1.
- FACTORY INSULATED R-6 BACKPAN.

**AIR DEVICE SCHEDULE**

MARK	DESCRIPTION	LOCATION	NECK SIZE	FACE SIZE	FRAME TYPE	REMARKS
A	PRICE MODEL APDC ALUMINUM SUPPLY AIR DIFFUSER WITH INDIVIDUALLY ADJUSTABLE CURVED AIR PATTERN CONTROLLERS.	DINING AREA KITCHEN	SEE PLAN	24X24	LAY-IN	I7
C	PRICE MODEL SWCD STEEL SUPPLY AIR DIFFUSER FIELD ADJUSTABLE AIR PATTERN CONTROLLERS.	ENTRYS	14X14	20X20	BEVELLED	I3,5,6
F	PRICE MODEL 80 EGGRATE RETURN AIR GRILLE WITH REMOVABLE WHITE CORE. FACTORY FLAT BLACK BACKPAN AND ROUND NECK.	DINING KITCHEN	SEE PLAN	24X24	LAY-IN	I7
J	PRICE MODEL SWCD STEEL SUPPLY AIR DIFFUSER FIELD ADJUSTABLE AIR PATTERN CONTROLLERS.	RESTROOMS	10X10	16X16	BEVELLED	I2,3,5,6
K	PRICE MODEL APDOR ALUMINUM PERFORATED FACE RETURN AIR GRILLE.	RESTROOMS ENTRYS	14X14	17X17	SURFACE	I4,5,6

**GAS FIRED ROOFTOP UNIT SCHEDULE**

MARK	COOLING CAPACITY (MBH)		HEATING CAPACITY (MBH)		FAN SECTION (CFM)		MODEL	MANUFACTURER	REMARKS			
	TOTAL	SENS	INPUT	OUTPUT	STAGES	SUPPLY				O.A.	HP	ESP
ACH (NEW)	2825	205.3	480.0	384.0	2	8,500	2,000	7.5	1.0	LGH300S4M	LENNOX	H2,6-9
ACH2 (NEW)	100.3	7.02	240.0	192.0	2	2,830	780	2.0	0.75	LGH402H4M	LENNOX	I2,4-14,6-9
ACH3 (NEW)	1244	89.6	240.0	192.0	2	4,000	1,030	3.0	0.75	LGH420H4M	LENNOX	I2,4-14,6-9
ACH4 (NEW)	914	64.9	240.0	192.0	2	2,765	630	2.0	0.75	LGH409H4M	LENNOX	I2,4-14,6-9
ACH5 (NEW)	617	43.8	150.0	120.0	2	1,800	300	1.0	0.75	LGH406H4E	LENNOX	I2,4-14,6-9

**NOTES**

- COOLING CAPACITIES ARE GROSS, BASED ON INDOOR EDB: 80F, INDOOR EWB: 67F, OUTDOOR EDB: 95F.
- FOR PROPER BUILDING AIR BALANCE, VERIFY AMOUNT OF OUTSIDE AIR PROVIDED BY ALL EXISTING UNITS. ADJUST AS PER SCHEDULE IF NECESSARY.
- VERIFY MIN. 10' DISTANCE OF O.A. INTAKE OPENINGS OF A/C UNITS FROM ANY EXISTING SOURCE OF AIR POLLUTION (EXHAUST FAN, COMBUSTION FLUE, VENT ETC). IF SUCH CONDITIONS EXIST, CONTRACTOR IS REQUIRED TO DUCT OUTSIDE AIR INTAKE ON ROOF AWAY FROM ANY SUCH SOURCE.

**REMARKS**

- PROVIDE DIFFERENTIAL ENTHALPY ECONOMIZER WITH POWER EXHAUST. ECONOMIZER TO BE LOW LEAKAGE/HIGH PERFORMANCE.
- SEE DETAIL 2/M41 FOR SETTING OF PRODIGY M3 BOARD CONTROL PARAMETERS BY MC.
- PROVIDE FACTORY INSTALLED AND UNIT POWERED 115V GFI SERVICE OUTLET.
- PROVIDE FACTORY INSTALLED RETURN SIDE SMOKE DETECTOR.
- PROVIDE FACTORY INSTALLED NON-FUSED DISCONNECT.
- PROVIDE 2" MERV 8 THROW AWAY FILTERS.
- PROVIDE HINGED PANELS FOR FILTER ACCESS, FAN MOTOR ACCESS, COMPRESSOR ACCESS AND CONTROL COMPARTMENT ACCESS.
- ADJUST GAS MANIFOLD PRESSURE AT LOCATIONS WHERE ELEVATION EXCEEDS 2000' ABOVE SEA LEVEL AS RECOMMENDED BY MANUFACTURER.
- PROVIDE FACTORY COIL HALL GUARD, FIELD INSTALLED.
- PROVIDE HUMIDIDOL OPTION WITH FACTORY WALL MOUNTED HUMIDITY SENSOR.
- PROVIDE WITH FACTORY CONDENSATE DRAIN PAN OVERFLOW SWITCH.
- PROVIDE FACTORY INSTALLED BELT TENSIONER.
- PROVIDE WITH FACTORY RETURN AIR ADAPTER PLATE.
- PROVIDE FACTORY INSTALLED 115V GFI SERVICE OUTLET.
- PROVIDE WITH ADAPTER CLRB, UNIT BEING REPLACED IS LENNOX MODEL LGH406CH. ADAPTER CLRB IS PROVIDED BY LENNOX AS PART OF THE TOTAL EQUIPMENT PACKAGE.
- PROVIDE WITH MSAV BLOWER.
- PROVIDE FACTORY CONFIGURED PHASE LOSS PROTECTION.
- PROVIDE HIGH FALLT SCOR (100K).
- PROVIDE FACTORY FRESH AIR TEMPERING KIT.

**DUCTLESS SPLIT SYSTEM HEAT PUMP UNIT SCHEDULE**

MARK	COOLING CAPACITY (MBH)		HEATING CAPACITY (MBH)		EFFICIENCIES	FAN SECTION (CFM)	ELECTRICAL DATA		R-410A MODEL	MFR			
	MIN	MAX	MIN	MAX			SEER	HSPF			AHU	CU	
AHUM10H (NEW)	18.0	33.5	18.0	40.0	16.2	10.0	635-730-830	28	140	208/110	PKA-A36KA7	PLZ-HA36HA5	MTSLBISH

**NOTES**

- MECHANICAL CONTRACTOR SHALL PURCHASE THE SPLIT SYSTEM HEAT PUMP DIRECTLY FROM TRANE/MTSLBISH. CONTACT MS. LALRI FRANKOWSKI AT 630-400-4285, FOR PRICING AND AVAILABILITY.

**REMARKS**

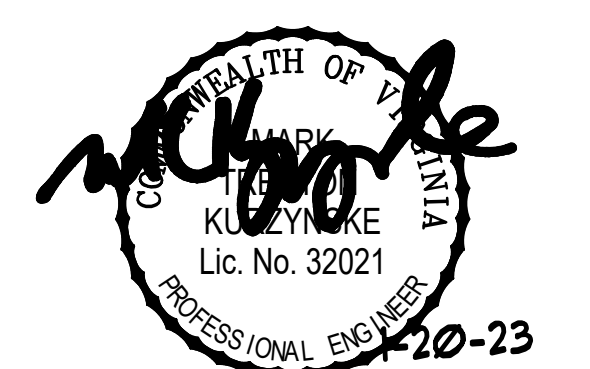
- ELECTRICIAN TO PROVIDE NON-FUSED DISCONNECT.
- MECHANICAL TO PROVIDE AND INSTALL REFRIGERANT PIPING AS PER MFR RECOMMENDATIONS.
- PROVIDE ENGRAVED PLASTIC LABEL AT AHU AND CU WITH 1" HIGH WHITE LETTERS ON A BLACK BACKGROUND RIVETED TO UNIT CABINET.
- PROVIDE WITH ADEQUATE REFRIGERANT LINE SET. FIELD VERIFY DISTANCE FROM WHERE CONDENSER IS TO BE SET TO AIR HANDLER LOCATION PRIOR TO ORDERING.
- PROVIDE WITH WALL MOUNTED THERMOSTAT (TAR-CT01MAU-SB). USE TWO-WIRE, STANDARD, NON-POLAR CONTROL WIRE TO CONNECTOR TB5 ON INDOOR UNIT CONTROLLER. PROGRAM THERMOSTAT CONTROLS TO MATCH DRIVE-THRU RTU SETPOINTS.
- PROVIDE PAC-SE56A-E CONNECTOR AT INDOOR UNIT (CONNECTOR CN3), WIRE ORANGE AND RED WIRES TO SPARE POLE ON RELAY R-1 IN SLMCOAST T-500 PANEL. (TERMINALS 11 AND 7 RESPECTIVELY) AND CAP THE BROWN WIRE.
- PROVIDE WITH CONDENSATE PUMP (BLUE DIAMOND MAX) BLUE MODEL# X67-721).



**Chick-fil-A**

5200 Buffington Road  
Atlanta, Georgia 30349

**Kurzynske & Associates**  
CONSULTING ENGINEERS  
2705 Lebanon Pike - Suite One  
Nashville, Tennessee 37214  
Telephone: (615) 255-5203



**CHICK-FIL-A**  
WAYNESBORO FSU  
710 SHENANDOAH VILLAGE DR  
WAYNESBORO, VA 22980

**FSR#02577**

BUILDING TYPE / SIZE: S08C  
RELEASE: v12.20

NO.	DATE	DESCRIPTION
2	08/10/22	Playground Removal

CONSULTANT PROJECT # 22087.HF.R  
PRINTED FOR CONSTRUCTION  
DATE 06/17/2022  
DRAWN BY DSF

Information contained on this drawing and in all digital files produced for above named project may not be reproduced in any manner without express written or verbal consent from authorized project representatives.

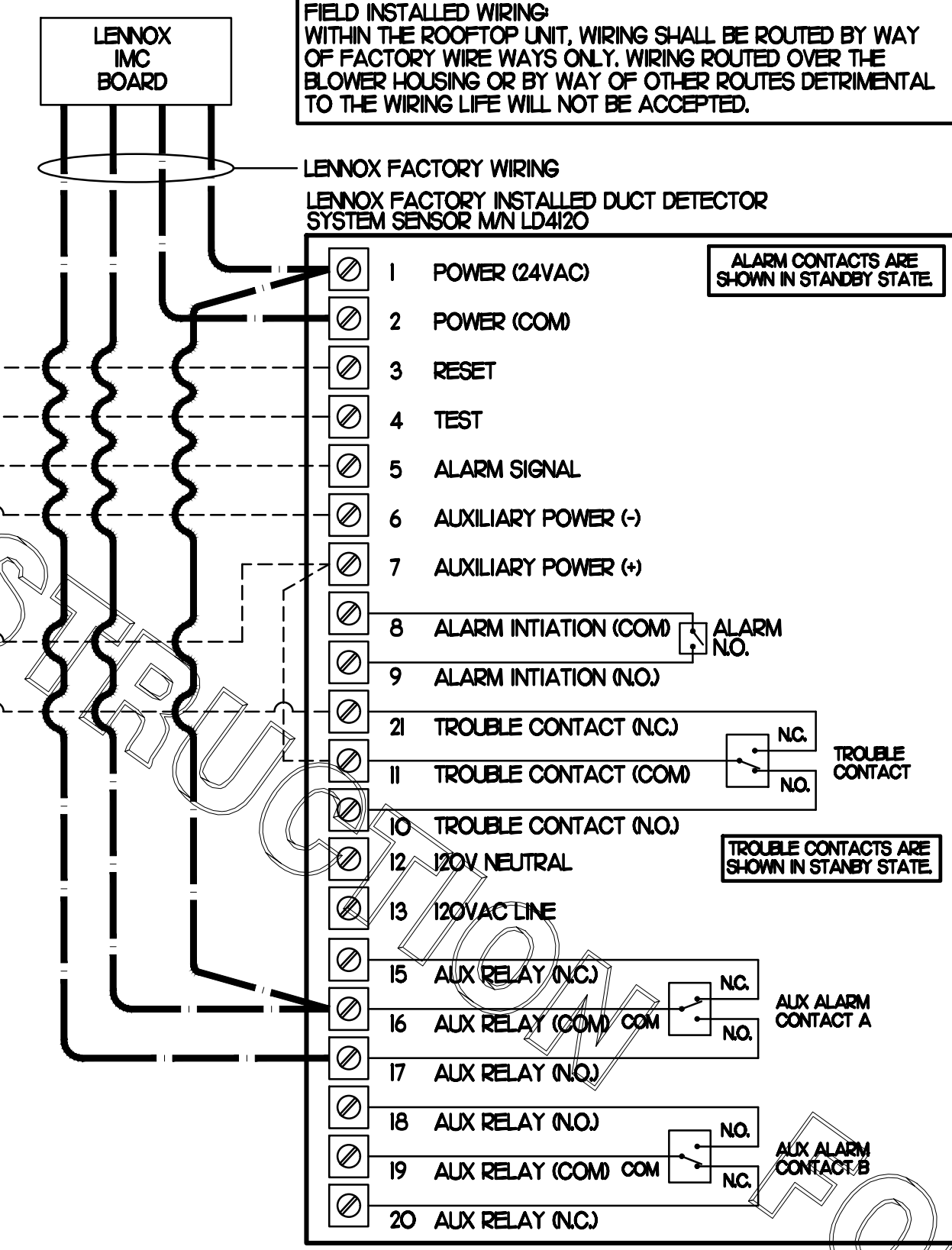
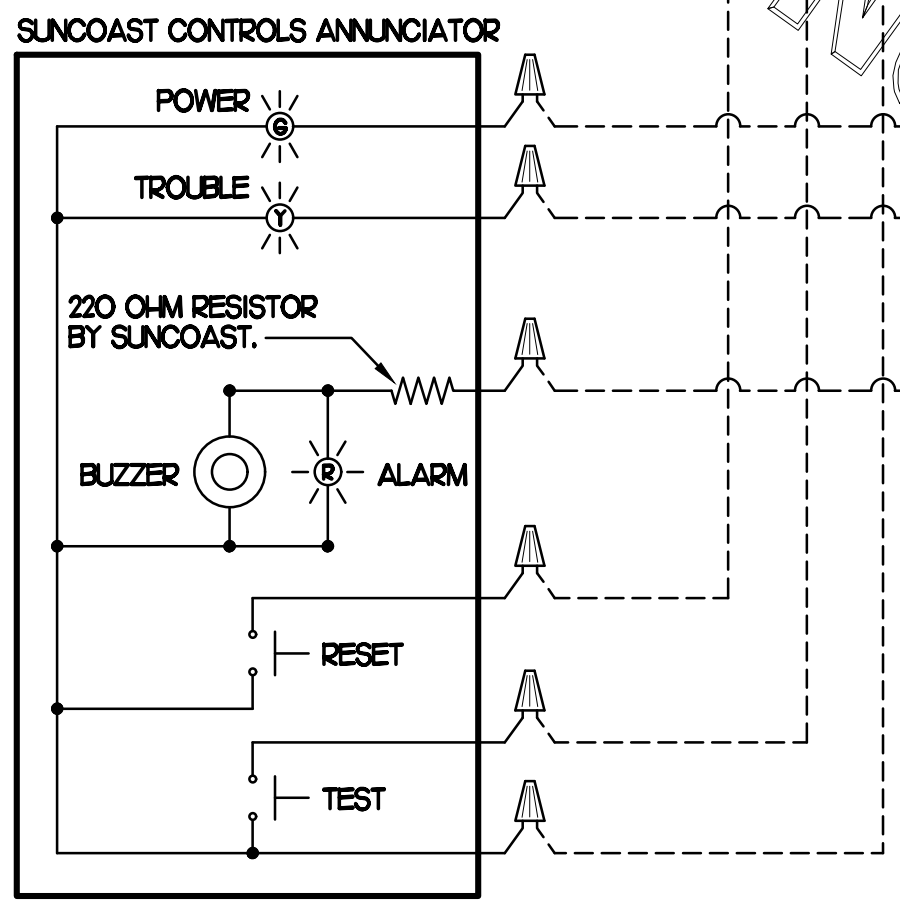
SHEET  
MECH DETAILS  
& SCHEDULES  
SHEET NUMBER

**M3.1**

**SUPPLY SIDE DUCT DETECTORS:**  
WHERE SUPPLY SIDE DUCT DETECTORS ARE SHOWN ON DWG M11 AND/OR CALLED FOR ON THE RTU SCHEDULE, THE CONTRACTOR IS TO RELOCATE THE FACTORY INSTALLED SUPPLY SIDE DUCT DETECTOR FROM THE BLOWER SECTION TO THE DUCTWORK. SEE NOTES ON DWG M11.

**LEGEND**  
 - - - 18 AWG MIN WIRING BY MECH CONTRACTOR  
 \_\_\_\_\_ FACTORY ANNUNCIATOR DETECTOR WIRING  
 - - - FACTORY LENNOX WIRING

**LABELING:**  
PROVIDE ENGRAVED LABEL WITH 1" HIGH WHITE LETTERS ON BLACK BACKGROUND IDENTIFYING UNIT SERVED.



**FIELD INSTALLED WIRING:**  
WITHIN THE ROOFTOP UNIT, WIRING SHALL BE ROUTED BY WAY OF FACTORY WIRE WAYS ONLY. WIRING ROUTED OVER THE BLOWER HOUSING OR BY WAY OF OTHER ROUTES DETRIMENTAL TO THE WIRING LIFE WILL NOT BE ACCEPTED.

**LENOX FACTORY WIRING:**  
LENOX FACTORY INSTALLED DUCT DETECTOR SYSTEM SENSOR MAN LD4120

ALARM CONTACTS ARE SHOWN IN STANDBY STATE

TROUBLE CONTACTS ARE SHOWN IN STANDBY STATE

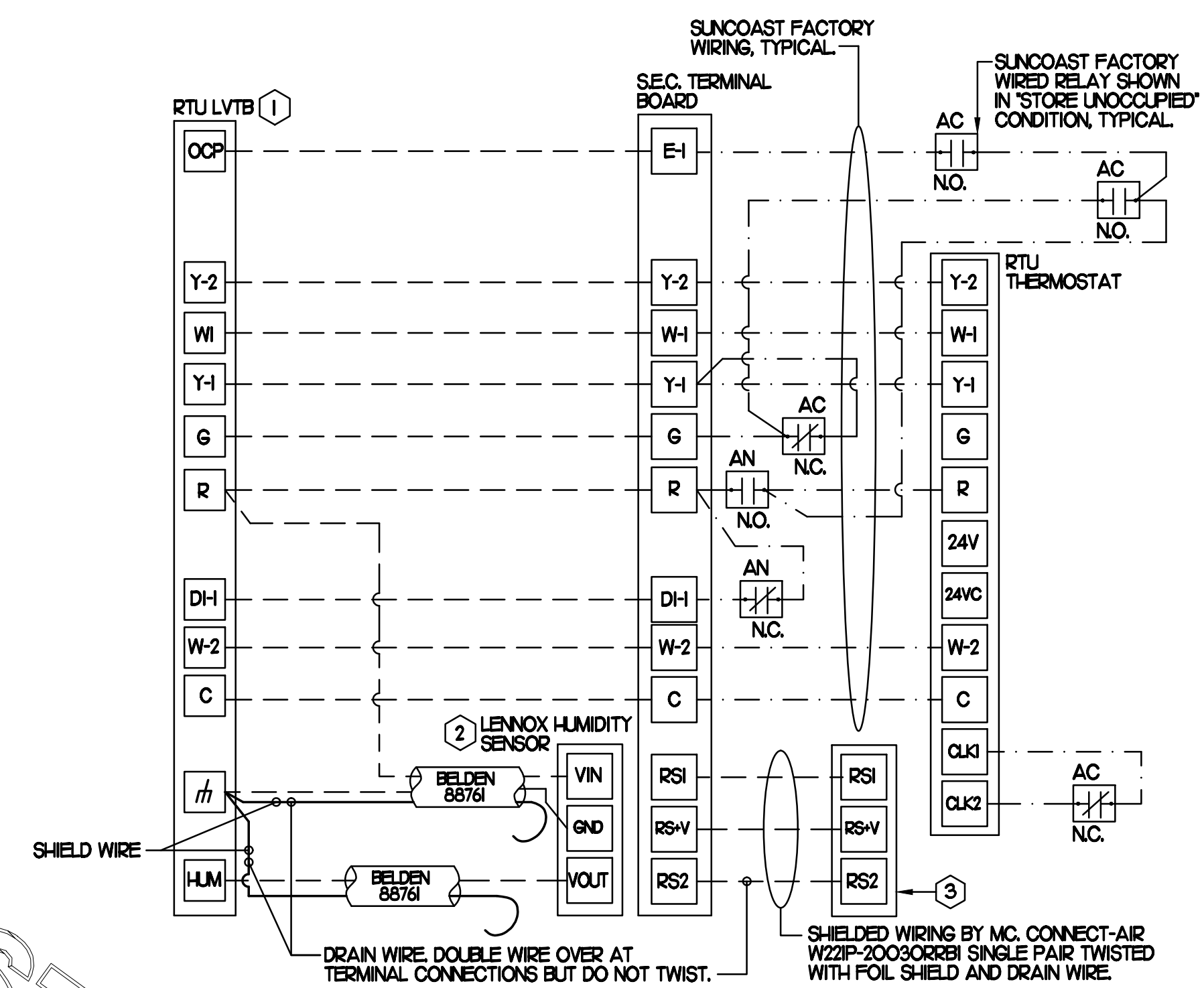
ALX ALARM CONTACT A

ALX ALARM CONTACT B

**1 SMOKE DETECTOR AND ANNUNCIATOR WIRING DIAGRAM - LENNOX**

NO SCALE

**LEGEND**  
 S.E.C. SUNCOAST ENVIRONMENTAL CONTROLS (SUPPLIER OF TEMP/FAN CONTROL PANEL) LOCATED IN KITCHEN  
 (I) KEY NOTE REFERENCE  
 (MC) MECHANICAL CONTRACTOR  
 (AN) SUNCOAST RELAY FACTORY INSTALLED AND WIRED IN CFA-500 PANEL, ENERGIZED BY PUTTING STORE SWITCH IN 'STORE OCCUPIED' POSITION.  
 SUNCOAST RELAY FACTORY INSTALLED AND WIRED IN CFA-500 PANEL, DE-ENERGIZED WHEN ANSUL FIRE SUPPRESSION SYSTEM IS ACTIVATED, AS NOTED.  
 - - - 22 AWG MIN LOW VOLTAGE WIRING BY MC, U.N.O. USE CONNECT-AIR SINGLE PAIR TWISTED WITH FOIL SHIELD AND DRAIN WIRE FOR TEMPERATURE SENSORS. (NOT FOR HUMIDITY SENSORS)  
 \_\_\_\_\_ LOW VOLTAGE WIRING BY S.E.C.  
 \_\_\_\_\_ LINE VOLTAGE BY ELECTRICIAN OR S.E.C.



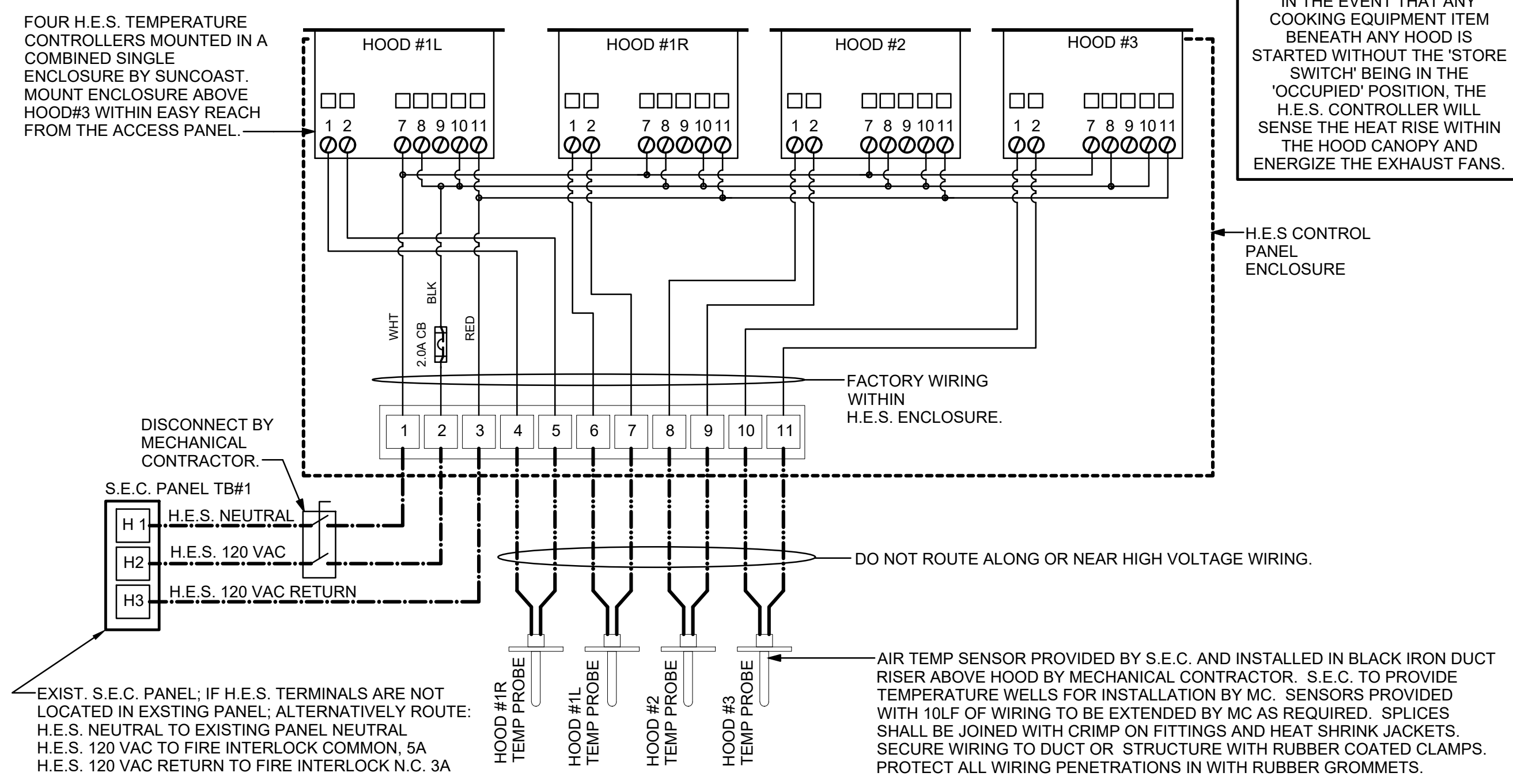
**2 ROOFTOP UNIT CONTROL WIRING - LENNOX**

NONE

**LEGEND**  
 S.E.C. SUNCOAST ENVIRONMENTAL CONTROLS CFA-500 ENERGY MGT PANEL  
 H.E.S. SUNCOAST ENVIRONMENTAL CONTROLS HOOD EXHAUST SAFETY CONTROLLER  
 M.C. MECHANICAL CONTRACTOR  
 - - - 18 AWG MIN UNSHIELDED LOW VOLTAGE WIRING BY MC, U.N.O.  
 \_\_\_\_\_ 120 VAC WIRING BY MECHANICAL CONTRACTOR

**GENERAL NOTES**  
 1. MECHANICAL CONTRACTOR TO PURCHASE THE H.E.S. CONTROL PANEL AND COMPONENTS FROM SUNCOAST ENVIRONMENTAL CONTROLS. TELEPHONE 877-544-6679.  
 2. CONTROLS COMPONENTS TO BE FACTORY MOUNTED IN LABELED NEMA-1 ENCLOSURES.  
 3. MECHANICAL CONTRACTOR TO PROVIDE A PROFESSIONALLY LAMINATED COPY OF THIS DETAIL ATTACHED TO THE ENCLOSURE CONTACT ENGINEER OF RECORD FOR A REPRODUCIBLE COPY OF THE DETAIL.

**S.E.C. H.E.S. OPERATION**  
 IN THE EVENT THAT ANY COOKING EQUIPMENT ITEM BENEATH ANY HOOD IS STARTED WITHOUT THE 'STORE SWITCH' BEING IN THE 'OCCUPIED' POSITION, THE H.E.S. CONTROLLER WILL SENSE THE HEAT RISE WITHIN THE HOOD CANOPY AND ENERGIZE THE EXHAUST FANS.



**3 HOOD EXHAUST SAFETY SWITCH (H.E.S.S.) WIRING DIAGRAM**

NONE

**LEGEND**  
 (MC) MECHANICAL CONTRACTOR  
 (E.C.) ELECTRICAL CONTRACTOR  
 - - - 18 AWG MIN WIRING BY MECHANICAL CONTRACTOR  
 - - - 18 AWG MIN LOW VOLTAGE FACTORY WIRING  
 \_\_\_\_\_ HIGH VOLTAGE BY ELECTRICAL CONTRACTOR

**4 OFFICE VAV DAMPER AND TSTAT**

NONE

PROVIDE A PROFESSIONALLY LAMINATED COPY OF THESE DETAILS TO BE INSTALLED INSIDE THE ROOFTOP UNIT CONTROL CABINET. USE A SETON CHART FRAME STYLE #68624, TELEPHONE NUMBER 800-243-6624, FOR MOUNTING THE DETAIL. ATTACH THE FRAME TO THE INTERIOR OF THE UNIT IN PLAIN AND EASY VIEW OF THE CONTROLS SECTION. CONTACT ENGINEER OF RECORD FOR A REPRODUCIBLE COPY OF THE DETAIL.

**NOTES**  
 1. FOR ALL RTUS EXCEPT AT KITCHEN RTUS, CHANGE PRODIGY-M3 BOARD CONTROL PARAMETER #65 TO ZERO (#58 ON LCH UNITS). ON OLDER BOARDS THIS IS ECTO PARAMETER 3.01 FOR LCH UNITS OR ECTO 2.01 FOR LCH UNITS. THIS WILL CAUSE THE O.A. DAMPER TO OPEN ON 'OCCUPIED' START. AT KITCHEN RTUS (LGH TYPE) LEAVE THE SETTING AT THE DEFAULT VALUE SO THE O.A. DAMPER WILL REMAIN CLOSED FOR THE FIRST 60 MINUTES AFTER 'OCCUPIED' START. AT KITCHEN RTUS (LCH TYPE) CHANGE THE VALUE TO 5400 SO THE O.A. DAMPER WILL REMAIN CLOSED FOR THE FIRST 90 MINUTES AFTER 'OCCUPIED' START.  
 2. MECHANICAL CONTRACTOR SHALL MAKE PLASTIC LAMINATE OF THIS DETAIL AND INSTALL PERMANENTLY ON INSIDE DOOR OF ROOFTOP UNIT CONTROL COMPARTMENT.  
 3. SEE DETAILS THIS SHEET FOR SMOKE DETECTOR AND ANNUNCIATOR WIRING.  
 4. AT HUMIDITROL RTUS SET PRODIGY-M3 BOARD CONTROL PARAMETER #105 FOR DE-HUMIDIFICATION OPERATION TO A VALUE OF 7. OLDER M-8 IMC BOARD ECTO PARAMETER 4.24 VALUE TO BE SET TO A VALUE OF 7.  
 5. AT HUMIDITROL RTUS, SET PRODIGY-M3 BOARD CONTROL PARAMETER #106 FOR DE-HUMIDIFICATION SET POINT TO A VALUE OF 60 (60% RH).  
 6. AT HUMIDITROL RTUS, SET PRODIGY-M3 BOARD CONTROL PARAMETER #107 FOR DE-HUMIDIFICATION MODE DEAD BAND TO A VALUE OF 2 (2% RH).  
 7. SET ALL THERMOSTATS FOR AUTO CHANGEOVER.  
 8. FOR MSAV UNITS, SET THE MSAV LOW SPEED SETTING TO THE SAME VALUE AS THE HIGH SPEED SETTING AFTER TAB IS COMPLETE.  
 9. PROVIDE PLASTIC ENGRAVED LABEL AT ALL NEW SENSORS WITH 1/2" HIGH WHITE LETTERING ON BLACK BACKGROUND, IE: 'ACH2 HUMIDITY SENSOR' OR 'ACH2 TEMP SENSOR'. PLACE LABELS ON WALL ADJACENT TO DEVICE. DO NOT APPLY DIRECTLY TO DEVICE.

**KEYED NOTES**  
 ① LOW VOLTAGE WIRING TO RTU TO BE ROUTED TO UNIT THRU FACTORY WIREWAY.  
 ② HUMIDITROL UNITS ONLY: WIRING TO HUMIDITY SENSOR TO BE MADE WITH TWO SEPARATE RUNS OF SHIELDED TWISTED PAIR. TERMINATE SHIELD WIRES AT TB1, LEAVE OPEN AT SENSOR.  
 ③ NETWORK TSTAT REMOTE TEMP SENSOR PROVIDED BY SUNCOAST AND INSTALLED BY MC. FIELD CALIBRATE EACH SENSOR.

**NOTES**  
 1. SEE DWG M11 FOR COMPONENT MODEL NUMBERS AND ORDERING INFORMATION.  
 2. 120V POWER FOR TRANSFORMER TO BE NON-SWITCHED AND HOT 24/7.  
 3. PROVIDE ALL NECESSARY WIRING AND COMPONENTS TO MAKE CONTROL AND POWER CONNECTIONS TO TRANSFORMER, ZONE DAMPER, AND THERMOSTAT PER MANUFACTURER'S IOM

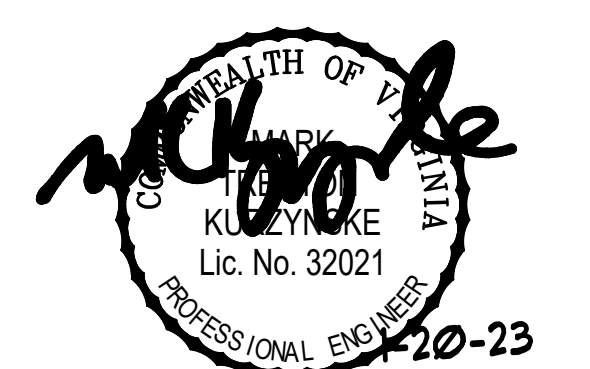
**SEQUENCE OF OPERATION**  
 1. WHEN THE SUPPLY AIR TEMPERATURE IS LESS THAN 72°F THE DAMPER WILL OPEN FULLY ON A RISE IN SPACE TEMPERATURE ABOVE THE SETPOINT.  
 2. WHEN THE SUPPLY AIR TEMPERATURE IS GREATER THAN 71°F THE DAMPER WILL OPEN FULLY ON A FALL IN SPACE TEMPERATURE BELOW THE SETPOINT.



**Chick-fil-A**

Chick-fil-A  
 5200 Buffington Road  
 Atlanta, Georgia 30349

**Kurzynske & Associates**  
 CONSULTING ENGINEERS  
 2705 Lebanon Pike - Suite One  
 Nashville, Tennessee 37214  
 Telephone: (615) 255-5203



**CHICK-FIL-A**  
**WAYNESBORO FSU**  
 710 SHENANDOAH VILLAGE DR  
 WAYNESBORO, VA 22980

**FSR#02577**

BUILDING TYPE / SIZE: S08C  
 RELEASE: v12.20

**REVISION SCHEDULE**

NO.	DATE	DESCRIPTION

CONSULTANT PROJECT # 22087.HF.R  
 PRINTED FOR CONSTRUCTION  
 DATE 06/17/2022  
 DRAWN BY DSF

Information contained on this drawing and in all digital files produced for above named project may not be reproduced in any manner without express written or verbal consent from authorized project representatives.

SHEET HVAC CONTROLS

SHEET NUMBER

**M4.1**

CONSTRUCTION



**Chick-fil-A**  
5200 Buffington Road  
Atlanta, Georgia 30349



**Kurzynske & Associates**  
CONSULTING ENGINEERS  
2705 Lebanon Pike - Suite One  
Nashville, Tennessee 37214  
Telephone: (615) 255-5203



**CHICK-FIL-A**  
**WAYNESBORO FSU**  
710 SHENANDOAH VILLAGE DR  
WAYNESBORO, VA 22980

**FSR#02577**

BUILDING TYPE / SIZE: S08C  
RELEASE: v12.20

REVISION SCHEDULE  
NO. DATE DESCRIPTION

CONSULTANT PROJECT # 22087.HF.R  
PRINTED FOR CONSTRUCTION  
DATE 06/17/2022  
DRAWN BY DSF

Information contained on this drawing and in all digital files produced for above named project may not be reproduced in any manner without express written or verbal consent from authorized project representatives.  
SHEET  
CANOPY HVAC  
PLANS  
SHEET NUMBER

**M5.1**

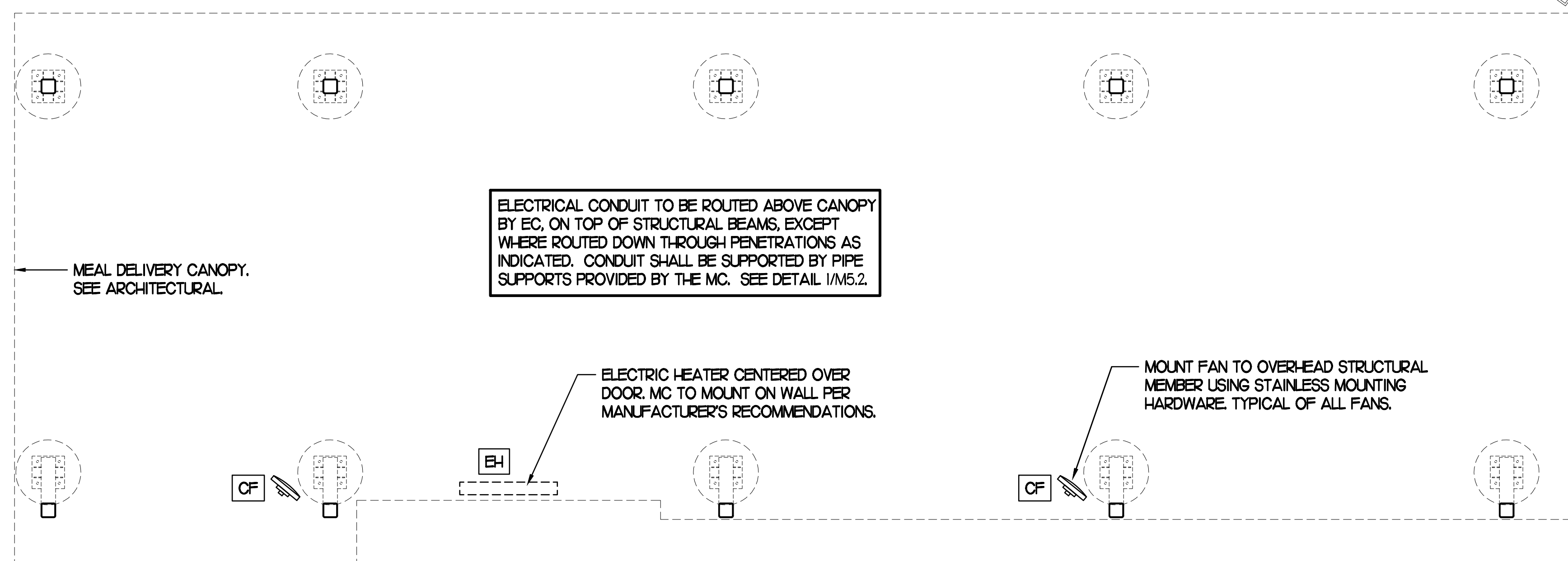
LEGEND			
CF#	CIRCULATING FAN # (TYP)	B/G	BELOW GRADE
GH#	GAS INFRARED HEATER # (TYP)	EC	ELECTRICAL CONTRACTOR
---	NEW GAS PIPING ABOVE GRADE	MC	MECHANICAL CONTRACTOR
----	NEW GAS PIPING BELOW GRADE	---	CONDUIT ABOVE CANOPY DECK

**GENERAL NOTES**

- COORDINATE NEW WORK WITH EXISTING CONDUIT, STRUCTURE, AND PIPING. FIELD VERIFY EXISTING CONDITIONS PRIOR TO START OF WORK.
- COORDINATE LOCATION AND RESPONSIBILITIES FOR UNDERGROUND PIPING AND ASSOCIATED TRENCHING WITH GENERAL CONTRACTOR PRIOR TO START OF WORK.
- EXPOSED GAS PIPING SHALL BE PAINTED BY GENERAL CONTRACTOR.
- ACTUAL NUMBER OF GAS INFRARED HEATERS & COOLING FANS WILL BE DETERMINED BY SITE-SPECIFIC CANOPY LAYOUT AND EQUIPMENT LOCATIONS, AS INDICATED ON ARCHITECTURAL PLANS.
- CONTROL WIRING FOR HEATERS BY EC. COORDINATE WIRE GAUGE WITH EC. SEE ELECTRICAL AND CONTROLS DRAWINGS, TYP.

BROMIC ELECTRIC HEATER SCHEDULE							
MARK	INPUT (KW)	FRAME SIZE			MOUNTING TYPE	MODEL	MANUFACTURER
		LENGTH	WIDTH	DEPTH			
ALL EH	6.0	56"	8.5"	3.5"	BRACKET	BH0420005	BROMIC
NOTES	<ul style="list-style-type: none"> <li>CHICK-FIL-A HAS A NATIONAL ACCOUNT WITH BROMIC COMPANY FOR THE ELECTRIC HEATER PACKAGE. THE MECHANICAL CONTRACTOR SHALL PURCHASE THE ELECTRIC HEATERS DIRECTLY FROM BROMIC COMPANY. CONTACT BLAKE RUSSIE AT 858-381-4850, FOR PRICING AND AVAILABILITY. BROMIC HEATERS NOT PURCHASED THRU BROMIC COMPANY WILL NOT BE ACCEPTED.</li> </ul>						
REMARKS	<ol style="list-style-type: none"> <li>STAINLESS STEEL LENS WITH BLACK EMISSIVE COATING.</li> <li>PROVIDE ENGRAVED PLASTIC LABEL AT EACH UNIT WITH UNIT DESIGNATION IN 1" HIGH WHITE LETTERS ON A BLACK BACKGROUND.</li> <li>PROVIDE WITH MOUNTING BRACKETS PER MANUFACTURER'S RECOMMENDATIONS.</li> </ol>						

CIRCULATING FAN SCHEDULE					
MARK	CFM	RPM	HP	MODEL	MANUFACTURER
REMARKS	<ol style="list-style-type: none"> <li>ALUMINUM PADDLE WITH STEEL HUB/SPIDER/PROPELLER.</li> <li>360 DEG. ROTATING HEAD HORIZONTALLY AND VERTICALLY.</li> <li>OSHA COMPLIANT DOUBLE LOCKING, COATED STEEL WIRE GUARD.</li> <li>3-SPEED, TOTALLY ENCLOSED, PERMANENTLY LUBRICATED BALL BEARING MOTOR.</li> <li>FACTORY PRE-WIRED POWER CORD.</li> <li>PROVIDE FACTORY WALL MOUNTING BRACKET.</li> <li>PROVIDE ENGRAVED PLASTIC LABEL AT EACH UNIT WITH UNIT DESIGNATION IN 1" HIGH WHITE LETTERS ON A BLACK BACKGROUND. MOUNT TO UNDERSIDE OF CANOPY OR EXISTING OVERHANG, FACING DOWNWARD, 12" Laterally FROM THE FAN LOCATION.</li> <li>REMOVE PULL CHAIN EXTENSION AT ON/OFF SWITCH IN FIELD.</li> <li>FACTORY CERTIFIED FOR OUTDOOR INSTALLATION.</li> </ol>				



**2 HVAC PLAN - MEAL DELIVERY CANOPY**

NTS

FOR CONSTRUCTION

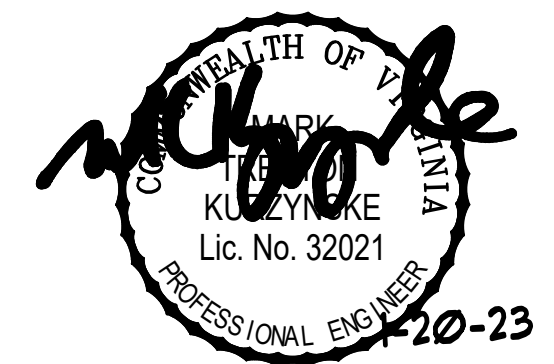
FOR CONSTRUCTION



**Chick-fil-A**  
 5200 Buffington Road  
 Atlanta, Georgia 30349



**Kurzynske & Associates**  
 CONSULTING ENGINEERS  
 2705 Lebanon Pike - Suite One  
 Nashville, Tennessee 37214  
 Telephone: (615) 255-5203



**CHICK-FIL-A**  
**WAYNESBORO FSU**  
 710 SHENANDOAH VILLAGE DR  
 WAYNESBORO, VA 22980

**FSR#02577**

BUILDING TYPE / SIZE: S08C  
 RELEASE: v12.20

REVISION SCHEDULE		
NO.	DATE	DESCRIPTION

CONSULTANT PROJECT #	22087.HF.R
PRINTED FOR	CONSTRUCTION
DATE	06/17/2022
DRAWN BY	DSF

Information contained on this drawing and in all digital files produced for above named project may not be reproduced in any manner without express written or verbal consent from authorized project representatives.  
 SHEET  
 MECH & ENVELOPE  
 COMCHECK  
 SHEET NUMBER

**M6.1**

**COMcheck Software Version 4.1.5.1**  
**Envelope Compliance Certificate**

**Project Information**

Energy Code: 2015 IECC  
 Project Title: Chick-fil-A #2577  
 Location: Waynesboro, Virginia  
 Climate Zone: 4a  
 Project Type: Addition

Construction Site: 710 Shenandoah Village Dr. Waynesboro, VA 22980  
 Owner/Agent: Chick-fil-A 5200 Buffington Road Atlanta, GA 30349  
 Designer/Contractor: Kurzynske & Associates 2705 Lebanon Pike - Suite One Nashville, TN 37214 615-255-5203

Building Area	Floor Area
1-Storage/Office (Dining, Cafeteria/Fast Food) : Nonresidential	570

**Envelope Assemblies**

Assembly	Gross Area or Perimeter	Cavity R-Value	Cont. R-Value	Proposed U-Factor	Budget U-Factor <sub>req</sub>
Roof 1: Insulation (Single) Above Deck: High Albedo Roof Required, (Bldg Use 1 - Storage/Office)	570	---	30.0	0.032	0.032
Floor 1: Slab-On-Grade (Proposed) Vertical 2 ft., (Bldg Use 1 - Storage/Office)	113	---	10.0	0.540	0.540
<b>EAST</b>					
Exterior Wall 1: Wood-Framed, 16" o.c., (Bldg Use 1 - Storage/Office)	221	20.0	0.0	0.064	0.064
<b>SOUTH</b>					
Exterior Wall 2: Wood-Framed, 16" o.c., (Bldg Use 1 - Storage/Office)	740	20.0	0.0	0.064	0.064
Door 1: Insulated Metal, Swinging, (Bldg Use 1 - Storage/Office)	28	---	---	0.330	0.610
<b>WEST</b>					
Exterior Wall 3: Wood-Framed, 16" o.c., (Bldg Use 1 - Storage/Office)	221	20.0	0.0	0.064	0.064

(a) Budget U-factors are used for software baseline calculations ONLY and are not code requirements.  
 (b) Slab-On-Grade proposed and budget U-factors shown in table are F-factors.

**Envelope PASSES: Design 5% better than code**

**Envelope Compliance Statement**

*Compliance Statement:* The proposed envelope design represented in this document is consistent with the building plans, specifications, and other calculations submitted with this permit application. The proposed envelope systems have been designed to meet the 2015 IECC requirements in COMcheck Version 4.1.5.1 and to comply with any applicable mandatory requirements listed in the Inspection Checklist.

Name - Title \_\_\_\_\_ Signature \_\_\_\_\_ Date \_\_\_\_\_

**COMcheck Software Version 4.1.5.1**  
**Mechanical Compliance Certificate**

**Project Information**

Energy Code: 2015 IECC  
 Project Title: Chick-fil-A #2577  
 Location: Waynesboro, Virginia  
 Climate Zone: 4a  
 Project Type: Addition

Construction Site: 710 Shenandoah Village Dr. Waynesboro, VA 22980  
 Owner/Agent: Chick-fil-A 5200 Buffington Road Atlanta, GA 30349  
 Designer/Contractor: Kurzynske & Associates 2705 Lebanon Pike - Suite One Nashville, TN 37214 615-255-5203

**Mechanical Systems List**

**Quantity System Type & Description**

- 1 AC#1 (25 ton) (Single Zone):  
 Heating: 1 each - Central Furnace, Gas, Capacity = 384 kBtu/h  
 Proposed Efficiency = 80.00% EL, Required Efficiency: 80.00% EL  
 Cooling: 1 each - Single Package DX Unit, Capacity = 283 kBtu/h, Air-Cooled Condenser, Air Economizer  
 Proposed Efficiency = 10.50 EER, Required Efficiency: 9.80 EER + 11.4 IEER  
 Fan System: AC#1 | Kitchen - Compliance (Motor nameplate HP method) : Passes  
 Fans:  
 Supply Supply, Constant Volume, 8500 CFM, 7.5 motor nameplate hp, 0.0 fan efficiency grade  
 Exhaust Exhaust, Constant Volume, 2000 CFM, 0.7 motor nameplate hp, 0.0 fan efficiency grade
- 1 AC#2 (8.5 ton) (Single Zone):  
 Heating: 1 each - Central Furnace, Gas, Capacity = 192 kBtu/h  
 Proposed Efficiency = 80.00% EL, Required Efficiency: 80.00% EL or 78% AFUE  
 Cooling: 1 each - Single Package DX Unit, Capacity = 100 kBtu/h, Air-Cooled Condenser, Air Economizer  
 Proposed Efficiency = 12.20 EER, Required Efficiency: 11.00 EER + 12.6 IEER  
 Fan System: AC#2 | Dining - Compliance (Motor nameplate HP method) : Passes  
 Fans:  
 Supply Supply, Constant Volume, 2830 CFM, 2.0 motor nameplate hp, 0.0 fan efficiency grade  
 Exhaust Exhaust, Constant Volume, 780 CFM, 0.3 motor nameplate hp, 0.0 fan efficiency grade
- 1 AC#3 (10 ton) (Single Zone):  
 Heating: 1 each - Central Furnace, Gas, Capacity = 192 kBtu/h  
 Proposed Efficiency = 80.00% EL, Required Efficiency: 80.00% EL or 78% AFUE  
 Cooling: 1 each - Single Package DX Unit, Capacity = 124 kBtu/h, Air-Cooled Condenser, Air Economizer  
 Proposed Efficiency = 12.00 EER, Required Efficiency: 11.00 EER + 12.6 IEER  
 Fan System: AC#3 | Dining - Compliance (Motor nameplate HP method) : Passes  
 Fans:  
 Supply Supply, Constant Volume, 4000 CFM, 3.0 motor nameplate hp, 0.0 fan efficiency grade  
 Exhaust Exhaust, Constant Volume, 1030 CFM, 0.3 motor nameplate hp, 0.0 fan efficiency grade
- 1 AC#4 (7.5 ton) (Single Zone):  
 Heating: 1 each - Central Furnace, Gas, Capacity = 192 kBtu/h  
 Proposed Efficiency = 80.00% EL, Required Efficiency: 80.00% EL or 78% AFUE  
 Cooling: 1 each - Single Package DX Unit, Capacity = 91 kBtu/h, Air-Cooled Condenser, Air Economizer  
 Proposed Efficiency = 12.50 EER, Required Efficiency: 11.00 EER + 12.6 IEER  
 Fan System: AC#4 | Dining - Compliance (Motor nameplate HP method) : Passes

**Quantity System Type & Description**

- Fans:  
 Supply Supply, Constant Volume, 2765 CFM, 2.0 motor nameplate hp, 0.0 fan efficiency grade  
 Exhaust Exhaust, Constant Volume, 630 CFM, 0.3 motor nameplate hp, 0.0 fan efficiency grade
- 1 AC#5 (5 ton) (Single Zone):  
 Heating: 1 each - Central Furnace, Gas, Capacity = 120 kBtu/h  
 Proposed Efficiency = 80.00% EL, Required Efficiency: 80.00% EL or 78% AFUE  
 Cooling: 1 each - Single Package DX Unit, Capacity = 62 kBtu/h, Air-Cooled Condenser, Air Economizer  
 Proposed Efficiency = 17.10 SEER, Required Efficiency: 14.00 SEER  
 Fan System: AC#5 | Play Area - Compliance (Motor nameplate HP method) : Passes
- Fans:  
 Supply Supply, Constant Volume, 1800 CFM, 1.0 motor nameplate hp, 0.0 fan efficiency grade  
 Exhaust Exhaust, Constant Volume, 300 CFM, 0.4 motor nameplate hp, 0.0 fan efficiency grade
- 1 AHU#1/CU#1 (Single Zone):  
 Split System Heat Pump  
 Heating Mode: Capacity = 40 kBtu/h,  
 Proposed Efficiency = 10.00 HSPF, Required Efficiency = 8.20 HSPF  
 Cooling Mode: Capacity = 34 kBtu/h,  
 Proposed Efficiency = 16.20 SEER, Required Efficiency: 14.00 SEER  
 Fan System: None
- 1 EH (Infrared Heater) (Single Zone):  
 Heating: 1 each - Radiant Heater, Electric, Capacity = 20 kBtu/h  
 No minimum efficiency requirement applies  
 Fan System: None

**Mechanical Compliance Statement**

*Compliance Statement:* The proposed mechanical design represented in this document is consistent with the building plans, specifications, and other calculations submitted with this permit application. The proposed mechanical systems have been designed to meet the 2015 IECC requirements in COMcheck Version 4.1.5.1 and to comply with any applicable mandatory requirements listed in the Inspection Checklist.

Name - Title \_\_\_\_\_ Signature \_\_\_\_\_ Date \_\_\_\_\_

FOR CONSTRUCTION

**I. SECTION C15000 - MECHANICAL SPECIFICATIONS**

PART I - GENERAL

- 1.01 SCOPE
- A. IT IS THE RESPONSIBILITY OF CONTRACTOR TO READ ALL SPECIFICATIONS AND CONSULT ALL DRAWINGS WHICH MAY AFFECT THE INSTALLATION AND COORDINATION OF HIS WORK WITH OTHER TRADES. CONTRACTOR SHALL COORDINATE AND MAKE MINOR ADJUSTMENTS IN LOCATION OF EQUIPMENT AND MATERIALS AS NECESSARY TO SECURE COORDINATION.
- B. COMPLETED INSTALLATION SHALL CONFORM TO ALL APPLICABLE FEDERAL, STATE AND LOCAL CODES AND ORDINANCES, INCLUDING BUT NOT LIMITED TO THE LATEST APPROVED EDITIONS OF NFPA-96, NFPA-90A, NFPA-54, SMACNA, ASHRAE 90.1 AND ASHRAE 62.
- C. SYSTEM LAYOUT IS SCHEMATIC AND EXACT LOCATIONS SHALL BE DETERMINED BY STRUCTURAL CONDITIONS. COORDINATION WITH OTHER TRADES, COORDINATION WITH FINISHES AND OTHER CONDITIONS. STRUCTURAL SUPPORTS SHALL NOT BE CUT OR ALTERED TO ASSURE FIT OF HVAC SYSTEM. TEN FOOT CLEARANCE SHALL BE MAINTAINED BETWEEN OUTSIDE AIR INTAKES AND EXHAUST FANS AND PLUMBING VENT TERMINALS.
- D. CONTRACTOR SHALL BE RESPONSIBLE FOR ALL DEFECTS, REPAIRS AND REPLACEMENTS IN MATERIALS AND WORKMANSHIP FOR A PERIOD OF ONE (1) YEAR AFTER FINAL PAYMENT IS APPROVED. CONTRACTOR SHALL HONOR FACTORY WARRANTIES ON ALL EQUIPMENT PROVIDED AS PART OF THIS SYSTEM.
- E. UPON COMPLETION OF PROJECT, ALL SYSTEM EQUIPMENT AND MATERIALS SHALL BE IN NEW, CLEAN CONDITION WITH ALL DAMAGE RESTORED TO CONDITION ACCEPTABLE TO THE OWNERS REPRESENTATIVE. ALL EQUIPMENT, COMPONENTS AND DUCTWORK SHALL BE INSPECTED AND THOROUGHLY CLEANED, READY FOR USE, AT COMPLETION OF JOB. ALL MISCELLANEOUS TOOLS, SCAFFOLDING, SURPLUS MATERIALS, RUBBISH AND DEBRIS SHALL BE REMOVED BY CONTRACTOR.
- F. CONTRACTOR SHALL PROVIDE TWO SETS OF 2" MERV 8 OR HIGHER THROW AWAY TYPE FILTERS. A CLEAN SET SHALL BE PROVIDED PRIOR TO TEST AND BALANCE AND AGAIN PRIOR TO OPENING.

PART II - PRODUCTS

- 2.01 HEATING AND COOLING EQUIPMENT (C15730)
- A. FURNISH AND INSTALL R-410A ROOFTOP SINGLE PACKAGE COMBINATION ELECTRIC COOLING AND ELECTRIC HEATING UNITS BY LENNOX AS SHOWN ON DRAWINGS. EQUIPMENT SHALL BE ARI CERTIFIED AND U.L. LISTED.
- B. ACCESSORIES SHALL INCLUDE LOW AND HIGH PRESSURE SAFETIES, CRANK CASE HEATER, OVERCURRENT AND OVERTEMPERATURE SAFETY, COMPRESSOR VIBRATION ISOLATORS, FILTER DRIERS, REFRIGERANT SERVICE VALVES, COIL HAIL GUARDS WHERE SCHEDULED, CONVENIENCE OUTLETS FACTORY INSTALLED ON SCHEDULED UNITS, UNIT MOUNTED NON-FUSED DISCONNECTS, LOW AMBIENT OPERATION DOWN TO 30 DEGREES F AND EVAPORATOR FREEZE STAT.
- C. COMPRESSORS SHALL BE FULLY HERMETIC SCROLL TYPE WITH INTERNAL VIBRATION ISOLATORS. COMPRESSORS SHALL BE PROVIDED WITH A MINIMUM FIVE (5) YEAR FULL WARRANTY.
- D. THE UNIT HEATING ELEMENTS SHALL BE BARE NICHROME WIRE EXPOSED TO THE AIR STREAM. HEATING CONTROLS SHALL INCLUDE TIME DELAY THAT SHALL BRING ELEMENTS ON AND OFF IN SEQUENCE WITH TIME DELAY BETWEEN EACH ELEMENT. HEATING SHALL BE PROVIDED IN TWO STAGES. LIMIT CONTROL SHALL PROVIDE OVERLOAD AND SHORT CIRCUIT PROTECTION. HEATER SHALL HAVE A ONE (1) YEAR WARRANTY.
- E. CHICK-FIL-A MAINTAINS A NATIONAL ACCOUNT FOR EQUIPMENT WITH LENNOX CORPORATION. PRICING FOR THE EQUIPMENT HAS BEEN ESTABLISHED IN ADVANCE. CONTACT LENNOX NATIONAL ACCOUNTS AT 972-497-6260 (OR BY FAX AT 972-497-5112) FOR PRICING, ORDERING AND AVAILABILITY.

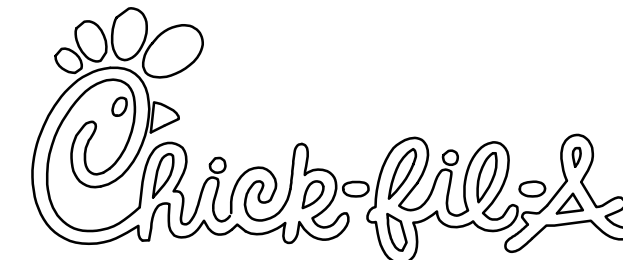
- 2.02 DUCTWORK (C15735) (SEE DWG M2.1 FOR ADDITIONAL GREASE DUCT SYSTEM REQ.)
- A. ACCEPTABLE MANUFACTURERS OF INSULATION ARE MANVILLE, OWENS CORNING OR KNAUF.
- B. ALL DUCTWORK SHALL BE SHEET METAL, UNLESS NOTED OTHERWISE (U.N.O.).
- C. DUCT DIMENSIONS SHOWN ARE INSIDE CLEAR DIMENSIONS, U.N.O.
- D. CONSTRUCTION OF DUCTWORK SHALL MEET SMACNA 1" W.C. PRESSURE CLASS STANDARD AND RECOMMENDATIONS. SMACNA SHALL BE FOLLOWED WITH RESPECT TO GAGE THICKNESS, JOINTS, REINFORCING, CONSTRUCTION, INSTALLATION AND SUPPORT FOR PRESSURE CLASS STATED. ALL TRANSVERSE JOINTS IN RECTANGULAR AND ROUND DUCT SHALL BE SEALED PER SMACNA SEAL CLASS C WITH U.L. DUCT MASTIC SEALANT APPROVED FOR INTENDED USE. DUCT TAPE IS NOT AN ACCEPTABLE SUBSTITUTE FOR MASTIC UNLESS EQUAL TO HARDCAST FOIL-GRIP 1402 BUTYL RUBBER ADHESIVE TAPE.
- E. ALL DUCT INSULATION SHALL MEET MINIMUM R-VALUE REQUIRED BY ASHRAE 90.1 LATEST EDITION. ALL DUCT WRAP SHALL BE MINIMUM 2" THICK, 3/4 PCF AND 5.6 R-VALUE INSTALLED WITH EITHER A VAPOR BARRIER WITH MAXIMUM PERMEANCE 0.05 OR A MINIMUM 2 MIL ALUMINUM REINFORCED FOIL/KRAFT FACING.
- F. ALL DUCT DROPS FROM THE ROOFTOP UNITS SHALL BE EXTERNALLY INSULATED.
- G. SUPPLY AND RETURN AIR DUCTWORK SERVING ALL AREAS SHALL BE EXTERNALLY INSULATED.
- H. ALL AIR CONVEYANCE COMPONENTS SUCH AS, BUT NOT LIMITED TO DUCT, DUCT PLENUMS, GRILLES/DIFFUSERS, BACK PANS, AND BOOTS SHALL BE INSULATED. INSULATION TYPE IS COVERED ELSEWHERE IN THIS SPECIFICATION.
- I. RESTROOM RECTANGULAR EXHAUST AIR DUCTWORK SHALL BE LINED WITH 1" THICK, 1-1/2 PCF INSULATION.
- J. TRUNK DUCTS SHALL BE ISOLATED FROM UNIT VIBRATION WITH THE USE OF NFPA AND U.L. APPROVED FLEXIBLE CONNECTORS INSTALLED AT THE TOP OF BOTH SUPPLY AND RETURN DROPS.
- K. INSULATED FLEXIBLE DUCT MAY BE UTILIZED FOR RUNOUTS TO GRILLES AND DIFFUSERS ONLY IN THE HORIZONTAL POSITION AND IN MAXIMUM LENGTHS OF 4'-0", NO EXCEPTIONS. SEE TAKE-OFF DETAIL ON DRAWING M3.1.
- L. CONSTRUCTION OF FLEXIBLE DUCTWORK SHALL INCLUDE SPIRAL METAL HELIX BONDED TO A POLYESTER CORE, FIBERGLASS INSULATION WITH POLYETHYLENE OR MYLAR VAPOR BARRIER. ALL COMPONENTS SHALL HAVE APPROPRIATE U.L. APPROVAL AND SHALL BE EQUIVALENT TO THERMAFLEX MKE.
- M. FLEXIBLE DUCT SHALL BE INSTALLED PER THE "ADC FLEXIBLE DUCT PERFORMANCE AND INSTALLATION STANDARDS, 4TH ED" USING FOIL TAPE AND DRAWBAND ON THE INNER CORE AND TAPE OR DRAWBAND ON THE OUTER JACKET.
- N. DUCT TAPE SHALL BE EQUAL TO FASSON 181-B FX, 2-1/2" WIDE.
- O. SINGLE THICKNESS TURNING VANES SHALL BE INSTALLED AT 90 DEGREE TURNS IN SUPPLY DUCTWORK WHERE ANY ONE DIMENSION IS GREATER THAN 12".
- P. RADIUSSED ELBOWS MAY BE SUBSTITUTED FOR 90 DEGREE ELBOWS AT THE DISCRETION OF THE CONTRACTOR. CENTERLINE RADIUS EQUAL TO; R=W PER FIGURE NO. 2-2 IN SMACNA HVAC DUCT CONSTRUCTION STANDARDS.
- Q. EXTERNAL INSULATION ON BOTTOM OF DUCTS 24" OR WIDER SHALL BE SUPPORTED WITH STICK PINS ON 18" CENTERS. STICK PIN WASHERS SHALL BE COVERED WITH DUCT TAPE OR MASTIC.

- 2.03 CONTROLS (C15735)
- A. SYSTEMS SHALL BE COMPLETE WITH CONNECTIONS TO EXISTING CFA-500 TEMPERATURE CONTROL PANEL AS MANUFACTURED BY SUNCOAST ENVIRONMENTAL CONTROLS (S.E.C.) (PH: 877-544-6679). CONTROL WIRING TERMINATIONS ARE BY THE MECHANICAL CONTRACTOR.
- B. THE SMOKE DETECTORS SHALL BE FACTORY INSTALLED AND WIRED BY THE ROOFTOP UNIT MANUFACTURER.
- C. A FACTORY INSTALLED SMOKE DETECTOR IN THE RETURN AIR SECTION OF EACH AIR CONDITIONING UNIT SHALL STOP THE INDOOR FAN AND CLOSE THE OUTSIDE AIR DAMPER IN THE EVENT OF EXCESSIVE TEMPERATURE OR SMOKE. SMOKE DETECTOR SHALL BE LOCATED PRIOR TO ANY EXHAUST FROM THE BUILDING OR MIXING WITH FRESH AIR MAKE-UP. UPON DETECTION, THE SYSTEM SHALL NOT RESTART UNTIL THE DEVICE IS MANUALLY RESET. DEVICES SHALL BE LOCATED WHERE THEY CAN BE EASILY ACCESSED AND WHERE CLEAR OF FILTERS.
- D. CHICK-FIL-A HAS A NATIONAL ACCOUNT WITH SUNCOAST ENVIRONMENTAL CONTROLS FOR THE SMOKE DETECTOR TEST/RESET ANNUNCIATOR STATIONS. THE TEST/RESET STATIONS WILL BE PURCHASED AND INSTALLED BY THE MECHANICAL CONTRACTOR AS A PART OF A NATIONAL ACCOUNT PACKAGE.
- E. THE REMOTE TEST/RESET ANNUNCIATORS SHALL BE PROVIDED AND INSTALLED BY THE MECHANICAL CONTRACTOR. INSTALLATION BY MECHANICAL SHALL INCLUDE MOUNTING OF THE ANNUNCIATORS AND ALL WIRING FROM EACH DEVICE TO THE RTU OR AHU. PROVIDE A JUNCTION BOX IN THE WALL WITH 1/2" CONDUIT STUBBED UP ABOVE THE CEILING FOR EACH REMOTE TEST STATION. ANNUNCIATOR SHALL BE SUNCOAST CONTROLS REMOTE TEST/RESET STATION WITH POWER LED, TROUBLE LED, ALARM LED, 90DB HORN AND TEST/RESET BUTTON.
- F. THE RESTROOM FAN SHALL BE INTERLOCKED TO THE LIGHTS SERVING THE MEN AND WOMEN'S RESTROOMS. THE HOOD FANS SHALL BE CONTROLLED VIA THE SUNCOAST CFA-500 CONTROL PANEL. WIRING, RELAYS AND SWITCHES FOR CONTROL OF ALL FANS ARE BY ELECTRICAL CONTRACTOR.
- G. LENNOX UNITS - THERMOSTATS ARE PROVIDED AND INTEGRATED INTO THE TEMPERATURE CONTROL PANEL BY SUNCOAST ENVIRONMENTAL CONTROLS. SUNCOAST WILL PROVIDE A NETWORK THERMOSTAT US32-CFA TSTAT PRE-WIRED IN THE TEMPERATURE CONTROL PANEL. A REMOTE TEMPERATURE SENSOR FOR EACH THERMOSTAT IS ALSO PROVIDED. SOME UNITS MAY HAVE MORE THAN ONE SENSOR. MECHANICAL CONTRACTOR SHALL INSTALL ALL WIRING BETWEEN THE THERMOSTAT, THE REMOTE SENSOR AND THE ROOFTOP UNIT OR AHU.
- H. MECHANICAL CONTRACTOR SHALL INSTALL CONTROL WIRING IN 1/2" CONDUIT WHERE REQUIRED BY CODE. WHERE NOT REQUIRED TO BE IN CONDUIT, ALL WIRING SHALL BE RUN PARALLEL TO STRUCTURAL MEMBERS OR PERPENDICULAR WITH NO DIAGONAL ROUTING. ALL WIRING SHALL BE SECURED TO THE FRAMING TO PREVENT SAGGING IN RUNS. WIRING TO ROOFTOP UNITS SHALL BE ROUTED THROUGH THE FACTORY THRU-BASE FITTING IN THE UNIT BASE. NO SPLICING OF WIRING WILL BE ACCEPTED. ALL WIRING ABOVE THE ROOF SHALL BE INSTALLED IN EXTERIOR GRADE FLEXIBLE CONDUIT. ALL CONTROL WIRING AND CONTROL WIRING CONDUIT SHALL BE FURNISHED AND INSTALLED BY THE MECHANICAL CONTRACTOR. WIRING SHALL BE INSTALLED IN ACCORDANCE WITH LATEST EDITION OF NEC. ALL LOW VOLTAGE CONTROL WIRING SHALL BE NO LESS THAN 18 AWG MIN. CONTROL WIRING CONDUCTORS SHALL BE SIZED TO ACCOUNT FOR LOAD AND LENGTH OF RUN TO ALLOW SUFFICIENT VOLTAGE AVAILABLE AT CONTROLLED DEVICE TO OPERATE THE SYSTEM RELIABLY.

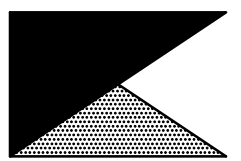
PART III - EXECUTION

- 3.01 SCOPE
- A. FURNISH AND INSTALL SYSTEM IN ACCORDANCE WITH REFERENCED STANDARDS, APPLICABLE CODES, MANUFACTURER'S RECOMMENDATIONS AND AS INDICATED ON DRAWINGS.
- B. OWNER SHALL TEST AND BALANCE MECHANICAL SYSTEM IN ACCORDANCE WITH NCI OR AABC STANDARDS TO ASSURE CONFORMANCE WITH DESIGN. G.C. WILL MAKE MECHANICAL CONTRACTOR AVAILABLE DURING TEST AND BALANCE TO ASSIST TESTING AGENCY AND TO MAKE CORRECTIONS IMMEDIATELY NECESSARY. CONTRACTOR SHALL CORRECT ITEMS ON WRITTEN TEST AND BALANCE REPORT.
- C. CONTRACTOR SHALL INSTRUCT THE OWNER'S REPRESENTATIVE IN ALL MATTERS PERTAINING TO THE PROPER MAINTENANCE OF EQUIPMENT FURNISHED UNDER THIS CONTRACT THROUGH DEMONSTRATION AND EXPLANATION OF OPERATING & MAINTENANCE MANUALS.
- D. CONTRACTOR SHALL PROVIDE A "SAMPLE MAINTENANCE PROPOSAL" TO THE OWNER'S REPRESENTATIVE IN ALL MATTERS PERTAINING TO THE PROPER MAINTENANCE OF EQUIPMENT FURNISHED UNDER THIS CONTRACT.
- E. CONTRACTOR SHALL COMPLETE A/C EQUIPMENT STARTUP DOCUMENTATION PROVIDED BY OWNER.

NATIONAL ACCOUNTS	
1.	LENNOX EQUIPMENT - CONTACT LENNOX NATIONAL ACCOUNTS AT 800-367-6285 (OR BY FAX AT 972-497-5112) FOR PRICING, ORDERING AND AVAILABILITY. LENNOX EQUIPMENT NOT PURCHASED THRU LENNOX NATIONAL ACCOUNTS WILL NOT BE ACCEPTED.
2.	LOREN COOK FAN AND CURB PACKAGE - THE MECHANICAL CONTRACTOR IS REQUIRED TO PURCHASE THE FAN/CURB PACKAGE DIRECTLY FROM TOM BARROW COMPANY. CONTACT MR. SCOTT GEORGE AT 404-351-1010 FOR PRICING AND AVAILABILITY. FANS AND CURBS NOT PURCHASED THRU TOM BARROW COMPANY WILL NOT BE ACCEPTED.
3.	PRICE AIR DEVICES - THE MECHANICAL CONTRACTOR IS REQUIRED TO PURCHASE THE AIR DEVICES DIRECTLY FROM TOM BARROW COMPANY. CONTACT MR. SCOTT GEORGE AT 404-351-1010 FOR PRICING AND AVAILABILITY. AIR DEVICES NOT PURCHASED THRU TOM BARROW COMPANY WILL NOT BE ACCEPTED.
4.	AIR DOORS - THE MECHANICAL CONTRACTOR IS REQUIRED TO PURCHASE THE AIR DOORS DIRECTLY FROM TOM BARROW COMPANY. CONTACT MR. SCOTT GEORGE AT 404-351-1010 FOR PRICING AND AVAILABILITY. AIR DOORS NOT PURCHASED THRU TOM BARROW COMPANY WILL NOT BE ACCEPTED.
5.	HALTON HOODS - CHICK-FIL-A WILL PURCHASE AND PROVIDE THE HOODS FOR INSTALLATION BY THE MECHANICAL CONTRACTOR. THE MECHANICAL CONTRACTOR SHALL BE RESPONSIBLE FOR RECEIVING THE HOODS. CONTACT HALTON CO. AT 270-237-5600 FOR MORE INFO.
6.	ROYAL METAL PRODUCTS START COLLARS - THE MECHANICAL CONTRACTOR IS REQUIRED TO PURCHASE THE START COLLARS DIRECTLY FROM TOM BARROW COMPANY. CONTACT MR. SCOTT GEORGE AT 404-351-1010 FOR PRICING AND AVAILABILITY. START COLLARS NOT PURCHASED THRU TOM BARROW COMPANY WILL NOT BE ACCEPTED.
7.	SCHWANK INFRARED HEATER PACKAGE - THE MECHANICAL CONTRACTOR IS REQUIRED TO PURCHASE THE HEATER PACKAGE DIRECTLY FROM TOM BARROW COMPANY. CONTACT MR. SCOTT GEORGE AT 404-351-1010 FOR PRICING AND AVAILABILITY. HEATERS NOT PURCHASED THRU TOM BARROW COMPANY WILL NOT BE ACCEPTED.
8.	CIRCULATING FAN PACKAGE - THE MECHANICAL CONTRACTOR IS REQUIRED TO PURCHASE THE FAN PACKAGE DIRECTLY FROM TOM BARROW COMPANY. CONTACT MR. SCOTT GEORGE AT 404-351-1010 FOR PRICING AND AVAILABILITY. FANS NOT PURCHASED THRU TOM BARROW COMPANY WILL NOT BE ACCEPTED.
9.	BROMIC ELECTRIC HEATER PACKAGE - THE MECHANICAL CONTRACTOR IS REQUIRED TO PURCHASE THE HEATER DIRECTLY FROM BROMIC COMPANY. CONTACT BLAKE RUSSIE AT 858-381-4850 FOR PRICING AND AVAILABILITY. HEATERS NOT PURCHASED THRU BROMIC COMPANY WILL NOT BE ACCEPTED.



**Chick-fil-A**  
5200 Buffington Road  
Atlanta, Georgia 30349



**Kurzynske & Associates**  
CONSULTING ENGINEERS  
2705 Lebanon Pike - Suite One  
Nashville, Tennessee 37214  
Telephone: (615) 255-5203



**CHICK-FIL-A**  
**WAYNESBORO FSU**  
710 SHENANDOAH VILLAGE DR  
WAYNESBORO, VA 22980

**FSR#02577**

BUILDING TYPE / SIZE: S08C  
RELEASE: v12.20

REVISION SCHEDULE  
NO. DATE DESCRIPTION

CONSULTANT PROJECT # 22087.HF.R  
PRINTED FOR CONSTRUCTION  
DATE 06/17/2022  
DRAWN BY DSF

Information contained on this drawing and in all digital files produced for above named project may not be reproduced in any manner without express written or verbal consent from authorized project representatives.

SHEET  
MECHANICAL  
SPECIFICATIONS  
SHEET NUMBER

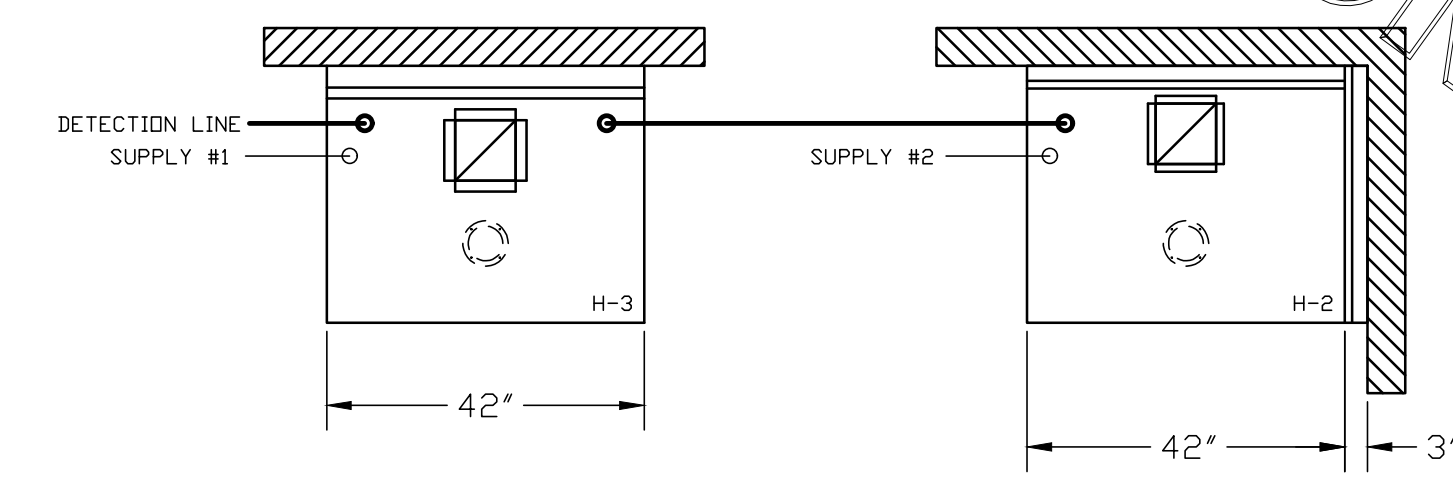
CONSTRUCTION

**M7.1**



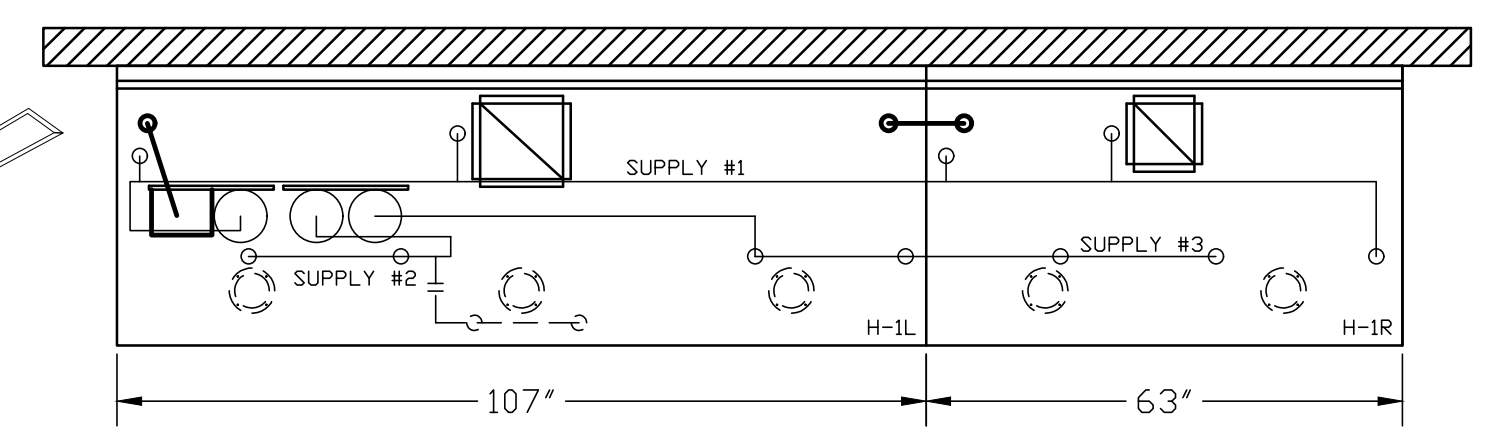
FOR REFERENCE ONLY

**\*\*PROTECTS HOODS H-2 & H-3\*\***  
 REMOTE MOUNTED:  
 (1) REGULATED RELEASE (WITH ONE TANK)  
 (1) SINGLE TANK ENCLOSURE (WITH ONE TANK)



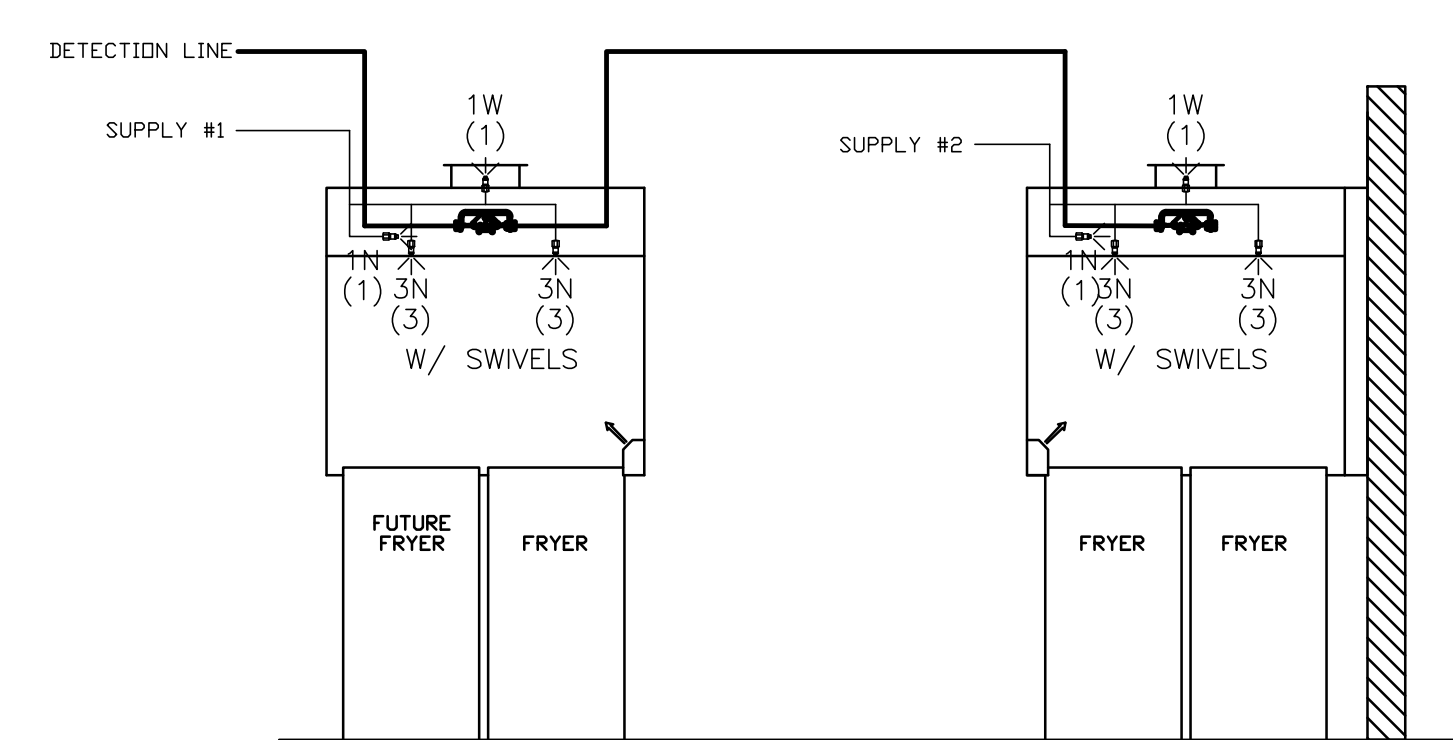
**ANSUL R-102 FIRE SYSTEM**  
 A) 6 GALLON SYSTEM (2 TANKS)  
 (REMOTE MOUNTED)  
 (FOR HOOD H-2 & H-3)  
 B) 3/8" BLACK IRON PIPING  
 W/ 3/8" S.S. APPLIANCE DROPS

(1) REGULATED RELEASE  
 (2) EXTRA MICRO SWITCH ASSEMBLIES  
 (MOUNTED IN REG. REL.)  
 (3) 3 GALLON TANKS

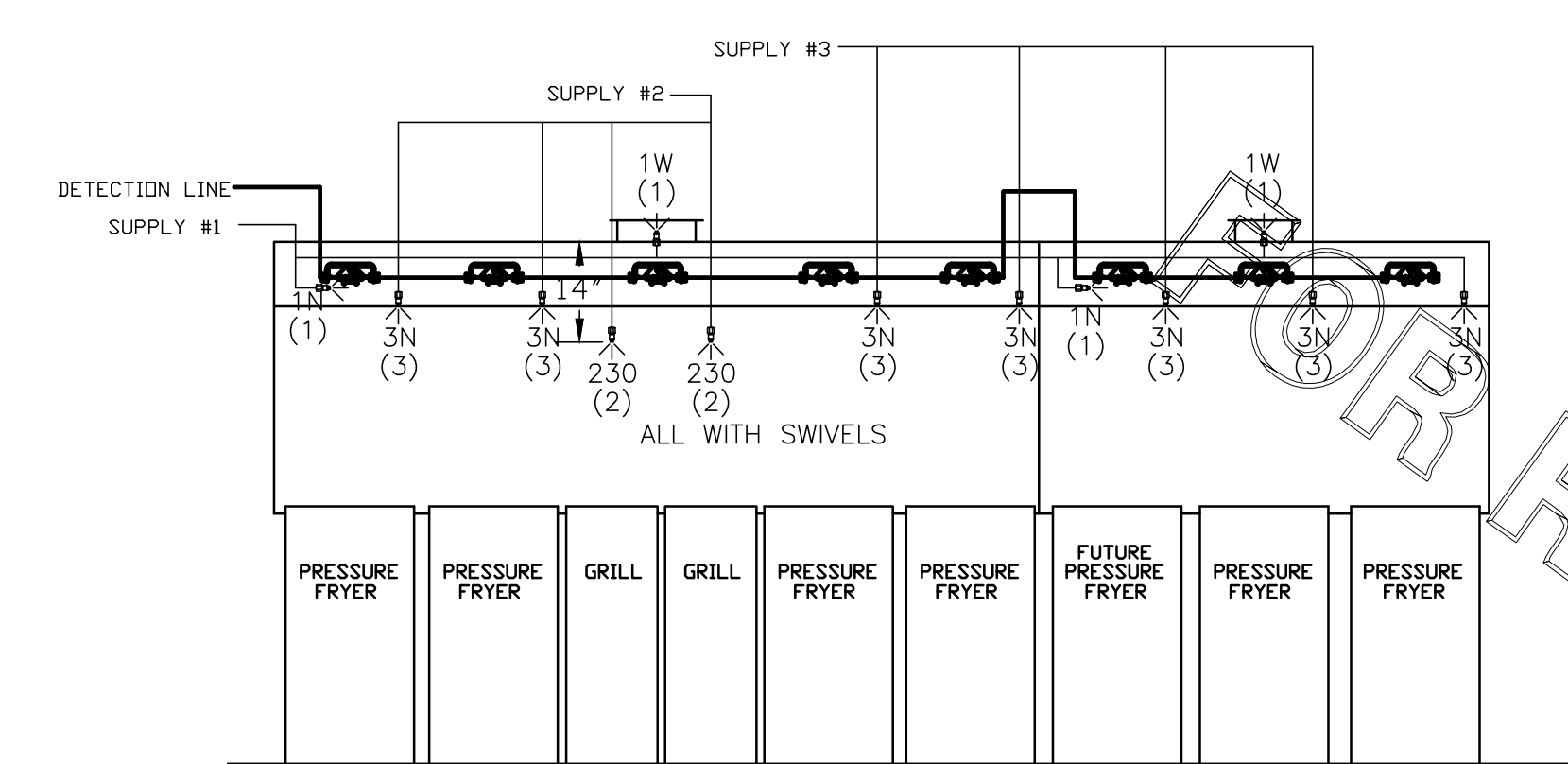


**ANSUL R-102 FIRE SYSTEM**  
 A) 9 GALLON SYSTEM (3 TANKS)  
 (MOUNTED ON HOOD H-1L)  
 (FOR HOODS H-1L & H-1R)  
 B) 3/8" BLACK IRON PIPING  
 W/ 3/8" S.S. APPLIANCE DROPS

(1) DEM REGULATED RELEASE  
 (2) EXTRA MICRO SWITCH ASSEMBLIES  
 (MOUNTED IN DEM REG. REL.)  
 (3) 3 GALLON TANKS



ANSUL R-102 FIRE SYSTEM LAYOUT



ANSUL R-102 FIRE SYSTEM LAYOUT

**FUSIBLE LINK RATINGS**

ITEM	TEMP
OPEN FRYERS	450°
2 BURNER / FLAT TOP	450°
PRESSURE FRYERS	450°
GRILL	450°
EXHAUST COLLARS	450°

ANSUL R-102 FIRE SYSTEM NOTES  
 THREE TANK SYSTEM MOUNTED ON TOP OF (H-1L)  
 MAXIMUM FLOW POINTS = 33

ANSUL R-102 FIRE SYSTEM NOTES  
 TWO TANK SYSTEM REMOTE MOUNTED  
 MAXIMUM FLOW POINTS = 22

ITEM #	QTY	DESCRIPTION	FLOW PTS (TOTAL)
1W	4	DUCT NOZZLES	4
1N	4	PLENUM NOZZLES	4
230	2	APPLIANCE NOZZLES	4
3N	11	APPLIANCE NOZZLES	33
<b>TOTAL FLOW POINTS - 45</b>			

ITEM #	QTY	DESCRIPTION
#200	8	SERIES DETECTORS W/ FUSIBLE LINKS
#201	2	TERMINAL DETECTOR W/ FUSIBLE LINKS
#202	1	DEM REGULATED RELEASE W/ DOUBLE POLE MICRO SWITCH
#202	1	REGULATED RELEASE W/ DOUBLE POLE MICRO SWITCH
#203	5	3 GALLON TANKS
#204	1	SINGLE TANK ENCLOSURE
#205	2	REMOTE PULL STATION

**ANSUL R-102 FIRE SYSTEM**  
 UL LISTED PER STD LATEST STD 300

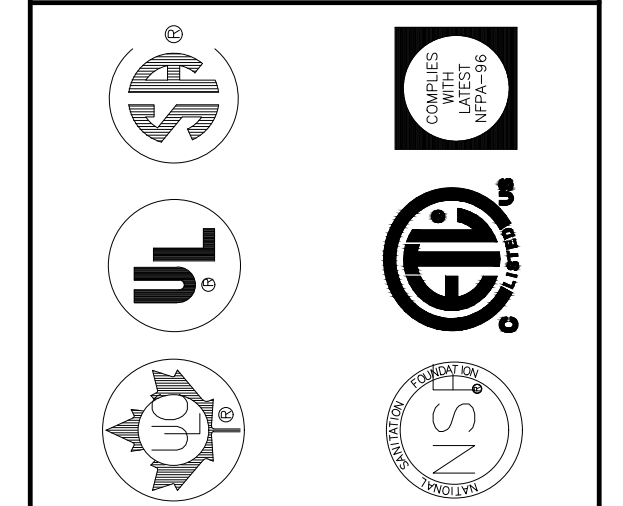
- FINAL INSTALLATION IS TO BE MADE IN ACCORDANCE WITH ALL APPLICABLE CODES
- ALL ELECTRICAL COMPONENTS FOR EQUIPMENT SHUT DOWN TO BE PROVIDED BY THE ELECTRICIAN. MICRO-SWITCH INSTALLED IN REGULATED RELEASE BY ANSUL INSTALLER
- REMOTE PULL STATION LOCATED PER MECHANICAL DRAWINGS

THIS DRAWING MUST BE CHECKED, SIGNED AND RETURNED TO THE APPROPRIATE FACTORY. PLEASE VERIFYING THE FOLLOWING:  
 1. ALL DIMENSIONAL INFORMATION, MOUNTING POSITIONS AND CLEARANCES.  
 2. THE LOCATION AND TYPE OF COOKING EQUIPMENT.

**NOTE TO APPROVER**  
 ANY CHANGES IN COOKING EQUIPMENT SUCH AS INCREASED ENERGY INPUTS OR EQUIPMENT CHANGES OCCURRING AT THE TIME OF FABRICATION WILL REQUIRE A RE-CALCULATION EXHAUST AIRFLOW MAY BE REQUIRED.

REVISE AND RESUBMIT  
 APPROVED FOR FABRICATION  
 WITH NO CHANGES  
 WITH CHANGES AS NOTED

APPROVED BY: \_\_\_\_\_ DATE: \_\_\_\_\_



MAIL APPROVED DRAWINGS TO APPROPRIATE FACTORY BELOW:		WEBSITE: WWW.HALTONCOMPANY.COM	
HALTON CO. (CANADA) 1021 BREVIK PLACE MISSISSAUGA, ON L4W 3R7 1-905-624-0301	HALTON CO. (USA) 101 INDUSTRIAL DRIVE SCOTTSDALE, KY 42164 1-270-237-5800	REVISION DESCRIPTION	DATE
REVISED COLLAR FOR H-1L & PROJECT LOCATION		BY	AF
1			06.30.22
2			
3			
4			
5			
6			
7			

PROJECT: CHICK-FIL-A #2577  
 WAYNESBORO  
 LOCATION: WAYNESBORO, VA  
 DRAWN BY: AF DATE: 06.29.22  
 SCALE: NTS  
 Halton Dwg: U22-522-02

