

HOOD INFORMATION

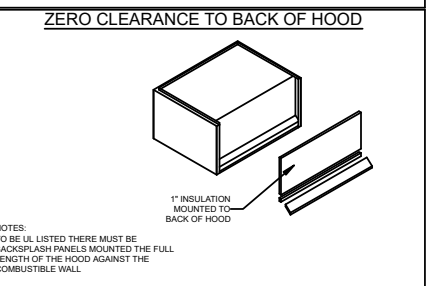
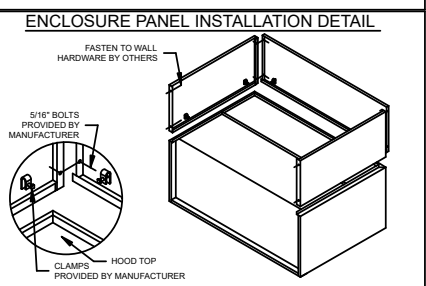
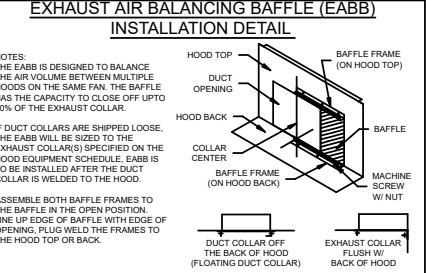
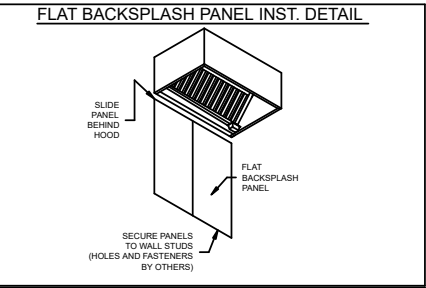
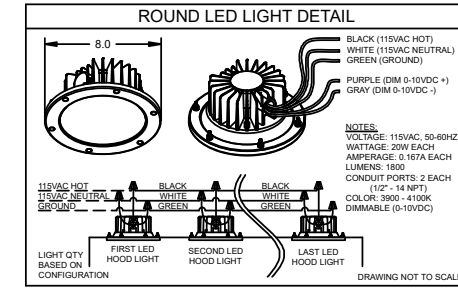
HOOD NO.	MARK	MODEL	HOOD DIMENSIONS (IN.)			HOOD CONSTR.	COOKING LOAD / DUTY RATING	EXHAUST COLLAR(S)					SUPPLY		TOTAL WEIGHT LBS.	SECTION LOCATION	
			LENGTH	WIDTH	HEIGHT			TOTAL CFM	WIDTH	LENGTH	DIA.	CFM	S.P.	MUA CFM			AC CFM
1	EXHAUST HOOD	XXEW-105-S	105	60	24	300 SS 100%	HEAVY	2000	10	19		2000	0.553			323.245	LEFT
2	EXHAUST HOOD	XXEW-105-S	105	60	24	300 SS 100%	HEAVY	2000	10	19		2000	0.553			323.245	RIGHT

HOOD INFORMATION

HOOD NO.	MARK	LIGHTING DETAILS			GREASE FILTRATION DETAILS			UTILITY CABINET(S)				
		FIXTURE TYPE BULB / LAMP INFO	QTY	FOOT CANDLES	TYPE / MODEL MATERIAL	QTY	SIZE (IN.) L H	LOCATION	FIRE SYSTEM		CONTROLS	
1	EXHAUST HOOD	ROUND LED	2	63.44	X-TRACTOR STAINLESS STEEL	4	16 20				TOUCHSCREEN	
2	EXHAUST HOOD	ROUND LED	2	63.44	X-TRACTOR STAINLESS STEEL	4	16 20	RIGHT	ANSUL R102	6	XKC	

HOOD OPTIONS

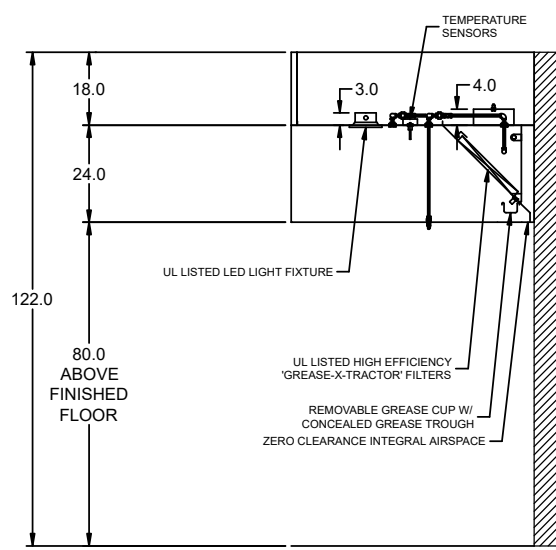
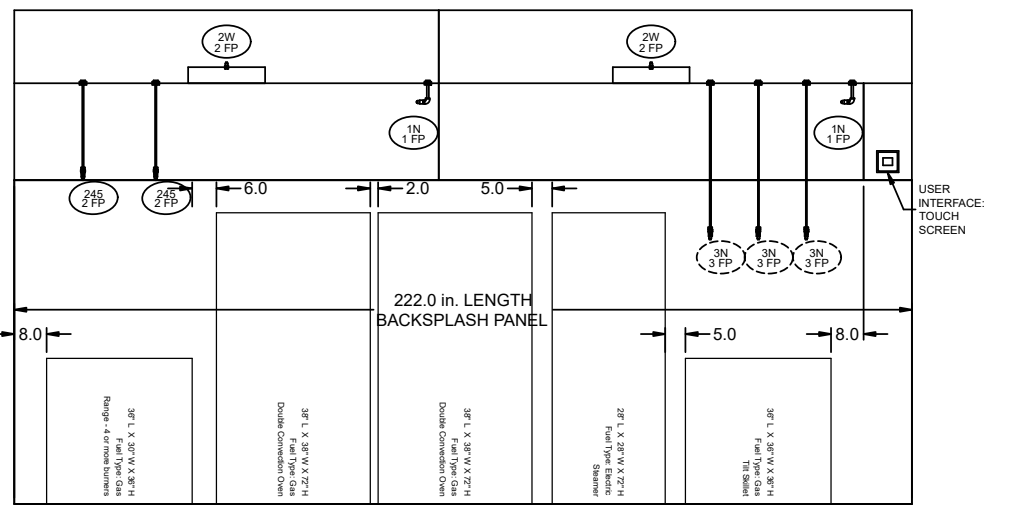
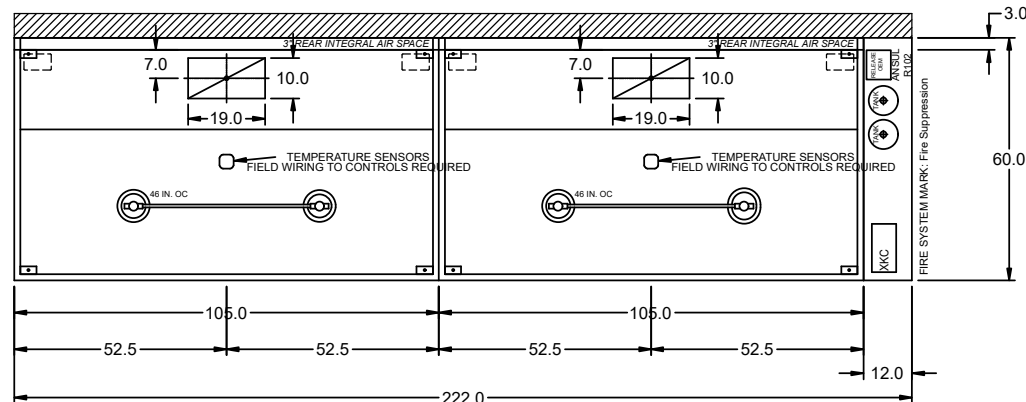
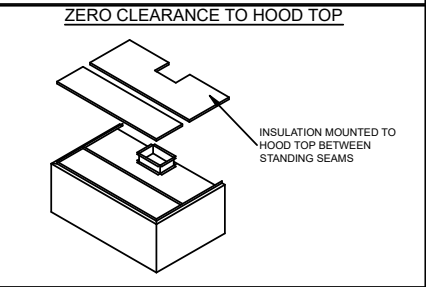
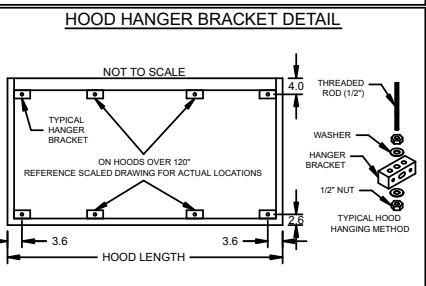
UL 710 LISTED W/ OUT EXHAUST FIRE DAMPER - UL #R25625
 HOOD TOP INSULATED FOR ZERO CLEARANCE TO COMBUSTIBLES
 BACK INTEGRAL AIR SPACE - 3 IN WIDE
 18 IN HIGH CEILING ENCLOSURES - FRONT LEFT RIGHT - FIELD INSTALLED
 FACTORY MOUNTED EXHAUST COLLAR(S)
 EXHAUST AIR BALANCING BAFFLE(S) - (EABB)
 FILTER REMOVAL TOOL INCLUDED - QTY 1
 BACKSPLASH 80.00 IN HIGH 222.00 IN LONG
 PERFORMANCE ENHANCING LIP (PEL) TECHNOLOGY
 STANDING SEAM CONSTRUCTION FOR SUPERIOR STRENGTH

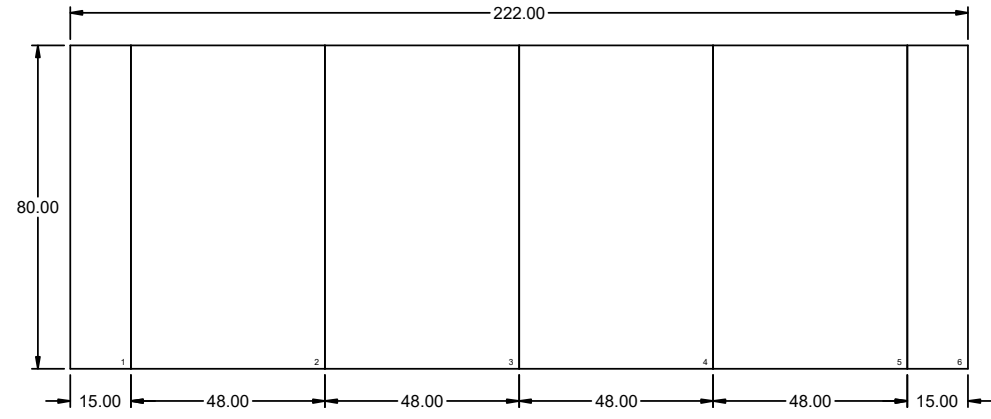


HOOD HANGING HEIGHT FOR FIRE SYSTEMS
 VERIFICATION OF HOOD HANGING HEIGHT ABOVE FINISHED FLOOR (A.F.F.) IS REQUIRED FOR CORRECT PLACEMENT OF FIRE SYSTEM NOZZLES.

RECOMMENDED HANGING HEIGHT = 80" FROM FINISHED FLOOR TO LOWER FRONT EDGE OF HOOD.

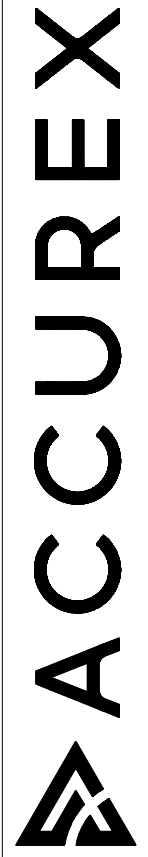
OTHER HANGING HEIGHT = _____" FROM FINISHED FLOOR TO LOWER EDGE OF HOOD.





BACK SPLASH

ACCUREX W/IA
Brad Borcharndt
brad.borcharndt@accurex.com
(262)227-7865



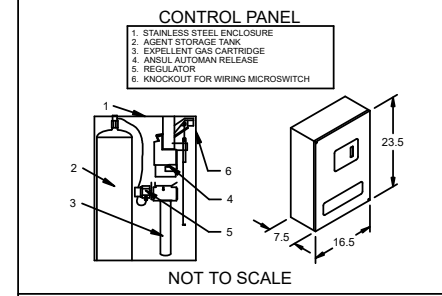
FIRE SYSTEM INFORMATION

MARK	MODEL	LOCATION	FLOW POINTS		SUPPLY LINE	DETECTION	MARK(S) PROTECTED BY FIRE SYSTEM
			HOODS	PCU			
FIRE SUPPRESSION	ANSUL R-102 WET CHEMICAL	CABINET – RIGHT END OF EXHAUST HOOD	19 UTILIZED 22 AVAILABLE		CONTINUOUS	FUSIBLE LINK	EXHAUST HOOD SECTION 1 EXHAUST HOOD SECTION 2

FIRE SYSTEM OPTIONS AND ACCESSORIES

- FULL INSTALLATION (INCLUDES PRE-PIPED HOOD(S) WITH DETECTION AND FACTORY COORDINATED INSTALL)
- CHROME SLEEVES FOR FACTORY PROVIDED APPLIANCES DROPS - INCLUDED
- METAL BLOW-OFF CAPS - INCLUDED
- GAS VALVE - INCLUDED - MECHANICAL SHUTOFF VALVE, 2", (ANSUL) - PART# ANSULMECHSHUTOFFVALVE200
- HOOD SUPPRESSION TANK - INCLUDED - 6 GAL. - [(2) 3.0 TANK(S)]
- REMOTE PULL STATION - STANDARD - FIELD INSTALLATION AT SINGLE POINT OF EGRESS

ANSUL R102 (WET CHEMICAL) FIRE PROTECTION SYSTEM - MODEL FSSC



NOT TO SCALE

NOTES:

WET CHEMICAL FIRE PROTECTION SYSTEM TO BE ANSUL R-102, DESIGNED IN COMPLIANCE WITH UL 300 REQUIREMENTS.

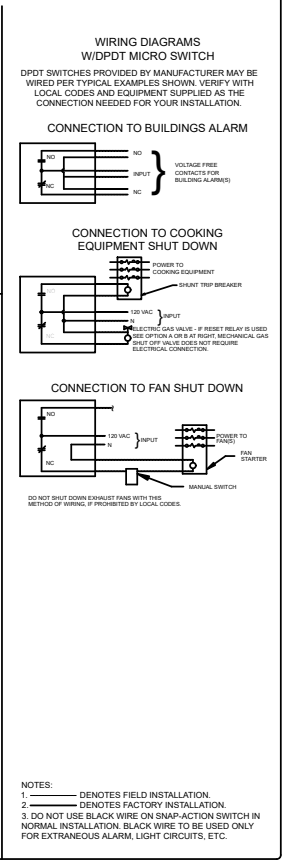
- VERIFICATION OF ALL COOKING EQUIPMENT MAKE, MODEL AND LOCATION REQUIRED FOR ALL FIRE PROTECTION SYSTEMS.
- ALL FIRE SYSTEM PIPING IS STANDARDLY TO THE RIGHT END OF THE HOOD UNLESS A WALL IS LOCATED ON THE RIGHT END.
- ANSUL AUTOMAN RELEASE TO BE LOCATED WITHIN 60" OF HOOD.

THE BASIC FIRE SYSTEM WILL INCLUDE THE FOLLOWING:

- GAS SHUT-OFF VALVE, IF REQUIRED, TO BE SUPPLIED BY MANUFACTURER (UP TO 2" DIAMETER AS STANDARD), AND INSTALLED BY A LICENSED PLUMBER.
- MICRO SWITCH TO BE SUPPLIED BY MANUFACTURER FOR CONNECTION TO, BUT NOT LIMITED TO, BUILDING ALARM SYSTEM(S), EXHAUST AND SUPPLY FANS AND ELECTRICAL POWER SHUT DOWN. FIELD WIRING AND CONNECTIONS TO BE PERFORMED BY A LICENSED ELECTRICIAN.

THE BASIC FIRE SYSTEM DOES NOT INCLUDE THE FOLLOWING:

- FULL DUMP TEST OTHER THAN WHAT IS SPECIFIED PER THE INSTALLATION MANUAL, OR TO SATISFY A STATE OR LOCAL CODE. PERMIT AND TESTING FEES ARE NOT INCLUDED UNLESS NOTED UNDER THE EQUIPMENT SCHEDULE FOR THE FIRE SYSTEM.
- MORE THAN TWO TRIPS TO THE JOBSITE OR SPECIAL TRANSPORTATION, OR OVERNIGHT LODGING REQUIREMENTS IN REMOTE AREAS. NORMAL TRAVEL DISTANCE IS FIRST 50 MI. (80.5 KM) FROM OFFICE.
- SPECIAL CLASSES OR ADDITIONAL LABOR FOR ACCESS TO SECURITY SENSITIVE AREAS
- INSTALLATION OF GAS SHUT-OFF VALVE.
- SPECIAL DRAWINGS REQUIRED TO SATISFY STATE OR LOCAL CODE. PLAN EXAMINATION FEES, PE OR PS APPROVAL STAMP.
- UNION LABOR, GOVERNMENT LABOR, OR PREVAILING WAGES REQUIRED FOR FINAL FIELD HOOK-UP.
- ANY AND ALL ELECTRICAL COMPONENTS/CONNECTIONS REQUIRED TO SHUT DOWN FANS, SHUT OFF DEVICE FOR ELECTRIC COOKING EQUIPMENT (SHUNT TRIP BREAKER), OR ACTIVATE AN ALARM SYSTEM, ETC.
- ANY DISMANTLING OR REASSEMBLY REQUIRED TO GAIN ACCESS TO THE FIRE SUPPRESSION PIPING LOCATED ON THE TOP OF THE HOOD.
- ROUGH-IN HIDDEN CONDUIT FOR REMOTE PULL STATION OR GAS VALVE (FLUSH MOUNTED PULL STATION).
- INSTALLATION OF MORE THAN (1) REMOTE PULL STATIONS OR DISTANCES GREATER THAN 20 FT (6.1M).
- PARTS OR LABOR REQUIRED TO CORRECT PIPING DUE TO COOKING EQUIPMENT CHANGES OR DEVIATION FROM PLANS, OR ANY CHARGES FOR MISSING OR ADDITIONAL PARTS OTHER THAN THOSE INDICATED ON THE FIRE SUPPRESSION DETAIL.



ACCUREX

ACCUREX W/IA
BRAD BORCHARDT
BRAD.BORCHARDT@ACCUREX.COM
(262)227-7865

PROJECT
9/8/2022

MARK

BAYSIDE MIDDLE SCHOOL

FIRE SUPPRESSION

CONTROL INFORMATION

MARK	ELECTRICAL CONTROL PACKAGE		USER INTERFACE		FANS CONTROLLED											
	MODEL	LOCATION	TYPE	LOCATION	FAN #	TYPE	FAN	FAN MARK	ZONE	CFM	MOTOR HP	MOTOR VOLT	CYCLE	MOTOR PHASE	MOTOR STARTER IN PANEL	VFD IN PANEL
CONTROLS	XKC-CV-S-21-2-1-0	RIGHT CABINET ON EXHAUST HOOD	FULL COLOR TOUCHSCREEN	CABINET - RIGHT CABINET ON EXHAUST HOOD	1	EXHAUST	E1	EXHAUST FAN 1	1	2000	1	208	60	3	YES	NO
					2	EXHAUST	E2	EXHAUST FAN 2	1	2000	1	208	60	3	YES	NO
					3	SUPPLY	S1	MAU	1	4000	3	208	60	3	NO	NO

CONTROL FEATURES

- HOOD LIGHT CONTROL
- TEMP SENSORS (FACTORY INSTALLED) - QTY. 2
- DRY FIRE CONTACTS - QTY. 1
- LIGHTS OFF DURING FIRE
- EXHAUST MAX DURING FIRE
- SUPPLY OFF DURING FIRE

CABINET DETAILS

DRAWING NOT TO SCALE

KITCHEN HOOD

CONTROLS

USER INTERFACE DETAILS

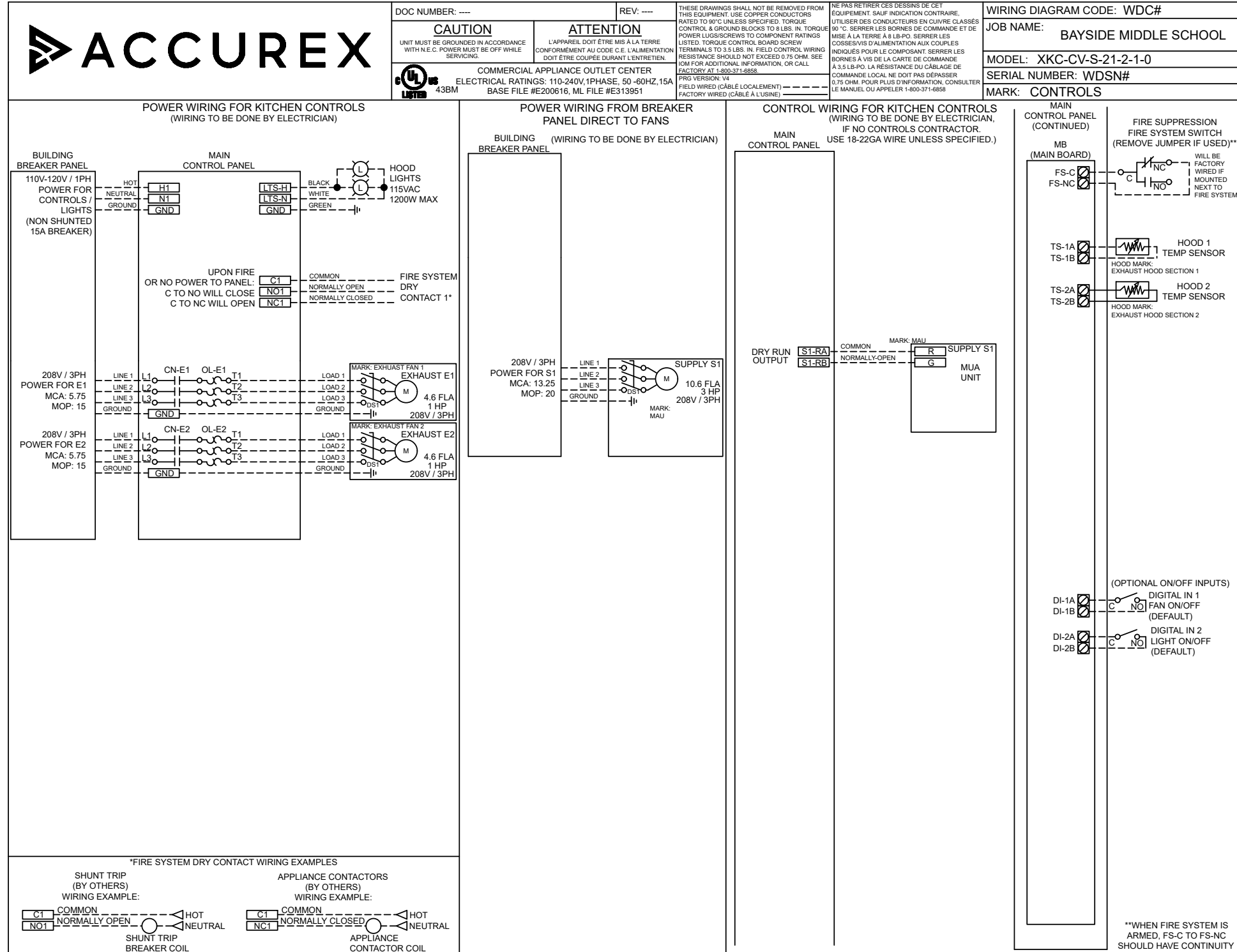
MOUNTING TYPE
FACTORY MOUNTED:
UTILITY CABINET - RIGHT END OF HOOD

USER INTERFACE CONTROL
FANS AND LIGHTS

INTERFACE CABLE LENGTH
7FT (FACTORY PROVIDED)

MOUNTING LOCATION:
UTILITY CABINET ON HOOD
(INNER CONTROL BOX: 12 X 20 X 6)

NOTES:
1) WHEN CONTROLS ARE MOUNTED IN HOOD-MOUNTED OR WALL-MOUNTED UTILITY CABINET, FOR HOOD OR WALL CABINET DIMENSIONS SEE HOOD SUBMITTAL.
2) MINIMUM OF 36" OF CLEARANCE RECOMMENDED IN FRONT OF CONTROL CABINET



WIRING DIAGRAM CODE: WDC#

JOB NAME: BAYSIDE MIDDLE SCHOOL

MODEL: XKC-CV-S-21-2-1-0

SERIAL NUMBER: WDSN#

MARK: CONTROLS

DOC NUMBER: ---

REV: ---

DEFAULT SETTINGS / PARAMÈTRES PAR DÉFAUT

TYPE: CV

CONFIGURATION: STANDARD

ZONES: 1

HOODS: 2

SUMPS: 0

EXHAUST FANS: 2

SUPPLY FANS: 1

MB ROOM SENSOR: NO

MB TEMP SENSORS: 2

HIGH TEMP FAULT: NO

FREEZE PROTECTION: YES

GAS RESET: NO

FAN PROVING: NO

BMS: NONE

ZONE SETTINGS

SEE ZONE CONFIGURATION IN TABLE ON LEFT

HOOD SETTINGS

SEE HOOD CONFIGURATION IN TABLE ON LEFT

EXHAUST FAN SETTINGS

SEE FAN CONFIGURATION IN TABLE ON LEFT

SUPPLY FAN SETTINGS

SEE FAN CONFIGURATION IN TABLE ON LEFT

SENSOR SETTINGS

SEE HOOD CONFIGURATION IN TABLE ON LEFT

USER INTERFACE SETTINGS (MB)

FAN & LIGHT BUTTONS: SHOW BOTH (SEPERATE)

USER INTERFACE SETTINGS (HCB)

NA

GENERAL SETTINGS

TIME ZONE: CENTRAL DAYLIGHT (DEFAULT)

FIRE FAULT SETTINGS

EXHAUST DURING FIRE: MAX

SUPPLY DURING FIRE: OFF

LIGHTS DURING FIRE: OFF

BMS SETTINGS

NA

PRG VERSION: V4

ZONE CONFIGURATION											
ZONE #	ZONE	ROOM TEMP									
1	Z1	PRESET									

HOOD CONFIGURATION											
HOOD #	HOOD	HOOD MARK	ZONE	EXHAUST	SUPPLY	MB-TEMP SENSORS	HCB				
1	H1	EXHAUST HOOD SECTION 1	Z1	E1	S1	TS1	NO				
2	H2	EXHAUST HOOD SECTION 2	Z1	E2	S1	TS2	NO				

FAN CONFIGURATION												
FAN #	TYPE	FAN	FAN MARK	ZONE	MIN CFM	MAX CFM	MODBUS VFD	VFD ADDRESS	MIN FREQ	MAX FREQ	MIN VDC	MAX VDC
1	EXHAUST	E1	EXHAUST FAN 1	Z1	-	2000	NO	-	-	-	-	10.0
2	EXHAUST	E2	EXHAUST FAN 2	Z1	-	2000	NO	-	-	-	-	10.0
3	SUPPLY	S1	MAU	Z1	-	4000	NO	-	-	-	-	10.0