

**Report By:**

National TAB  
1329 E. KEMPER ROAD  
SUITE 4210  
CINCINNATI, OH 45246



**Report: TAB REPORT**  
**Function: Test, Adjust, & Balance**  
**Date: 12/15/2025**  
**Completed By: National TAB**

# PROJECT

## Creek Technologies PH 4 (Beavercreek, OH)

2373 Lakeview Drive

Beavercreek, OH 45431

### Client

Detmer Mechanical

9181 Dixie Drive

Dayton, OH 45414

# National TAB

Project: Creek Technologies PH 4 (Beavercreek, OH)

## Table Of Contents

Section	Page #
AHU/RTU	3
GRD	6

# National TAB

Project: Creek Technologies PH 4 (Beavercreek, OH)

System/Unit: AHU/RTU



Asset: RTU-1

AREA:

Unit Data	
	Actual
MFG	ICP
Serial Num	C191175289
Model Num	RGV036HEFA0AAA
Configuration	VERTICAL
Num OA Filters 1	1
OA Filter Size 1	24x8"
Num Final Filter 1	2
Final Filter Size 1	24x16x2"

Test Data		
	Design	Actual
SF CFM	1200	1218
SF RPM	-	1478
RA CFM	-	1218
OA CFM	180	0
RL Voltage	208-230	213/215/216V
RL Amperage	-	1.8/1.8/1.8A
SF Motor Freq(HZ)	-	60Hz
SF System SetPt	-	6.53Vdc

Motor Data		
	Design	Actual
Motor MFG	-	ICP
Phase	3	3
Rated Voltage	208-230	208-230
Rated Amperage	-	4.5

Performance Data		
	Design	Actual
Fan Suction SP	-	-0.37"
Fan Discharge SP	-	0.34"
Total ESP	0.50	0.47"
Fan Total SP	-	0.71"
Pre-Filter P.D.	-	-0.10"

Completed By: Noah Stafford on 12/15/2025

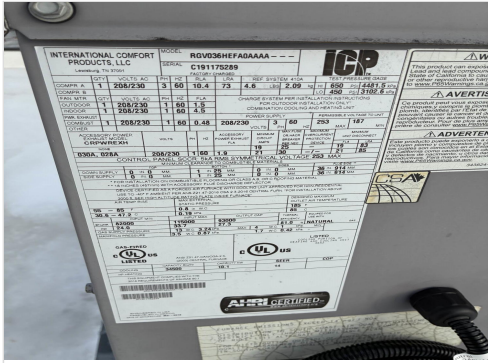
Notes:

No economizer installed.

OA filter present.

Written By: Noah Stafford on 12/15/2025

# Unit Data - PHOTO LOG



12/15/2025



12/15/2025

# National TAB

Project: Creek Technologies PH 4 (Beavercreek, OH)

## AHU/RTU



**Diffuser Supply (GRD)**

**RTU-1/**

<b>Asset</b>							
<b>Asset Name</b>	<b>Location</b>	<b>Type</b>	<b>Size</b>	<b>DESIGN CFM</b>	<b>CFM(1)</b>	<b>FINAL CFM</b>	<b>% to design</b>
2-1	B146	8	8	130	109	136	104.6
2-2	B146	8	8	130	122	134	103.1
2-3	B146	8	8	130	119	136	104.6
2-4	B146	8	8	130	144	128	98.5
2-5	B146	8	8	130	134	131	100.8
2-6	B146	8	8	130	150	131	100.8
2-7	B146	8	8	130	146	139	106.9
2-8	B147	8	8	160	136	145	90.6
2-9	B146	8	8	130	113	139	106.9
<b>Total</b>				1200	1173	1219	101.58%

Completed By: Noah Stafford on 12/15/2025

**MECHANICAL EQUIPMENT SCHEDULE:**

**RTU2 (EXISTING RTU)**  
 R.P. RG038HEFA0AAA (14.9 SEER, R-410A) 3-TON PACKAGED GAS-ELECTRIC ROOFTOP UNIT  
 1200 CFM (NOMINAL) @ .50 ESP, 25,400 NET COOLING - DOWNFLOW UNIT CONF. - APPROX. 507 LBS.  
 UNIT DIMENSIONS: 46-5/8" WIDTH X 74-3/8" LENGTH X 33-3/8" HGT.  
 GAS INPUT: 82,110 MBH INPUT / 65,993 MBH OUTPUT - 80% AFUE - TWO STAGE - 3/2" GAS LINE CONNECTION  
 ELECTRICAL: 208-230V / 3PH / 60HZ MCA 20 - MCKP 10  
 ACCESS: AS NOTED BELOW - RTU S/N: C191175289  
 (NEW) #CRMANDPRO01A03 25% MANUAL OUTSIDE AIR DAMPER  
 (NEW) #EB-STATE6P-01 (ECOBEE) SMART THERMOSTAT PRO (WIFI) PROGRAMMABLE T-STAT  
 (NEW) #E-WAVE-C #4906-10 AIR CLEANER  
 RECOMMEND FB, TBKS QTY: SIZES: (2) 16" X 25" X 2"

NOTE: PROVIDE CHECK, TEST & START-UP PER MANUFACTURES INSTALLATION INSTRUCTIONS

**MECHANICAL PLAN DRAWING NOTES:**

ALL RECTANGULAR DUCTWORK "SUPPLY/RETURN" PLENUMS TO BE GALV. METAL W/1" DUCT LINER "R-6"  
 ALL RECT. DUCTWORK "SUPPLY/RETURN" DISTRIBUTION TO BE OWENS CORNING #800-1-1/2" THK FIBERGLASS BRD  
 ALL INSULATION REQUIREMENTS TO MEET DUCTWORK INSULATION CONSTRUCTION STANDARDS  
 ALL INSULATION MATERIALS TO BE (CLASS 1 25/50 SMOKE / FLAME DEV. RATINGS)  
 ALL ROUND / FLEXIBLE DUCTWORK "SUPPLY/RETURN" TO BE "R-6.0" (CLASS 1 AIR DUCT) (25/50)  
 ALL ROUND / FLEXIBLE DUCTWORK "SUPPLY/RETURN & EXHAUST" TO BE INSTALLED/SUPPORTED ON 60" CENTERS  
 ALL ROUND / FLEXIBLE DUCTWORK "SUPPLY/RETURN & EXHAUST" TO BE UNLIMITED LENGTH.  
 ALL DUCTWORK TO BE INSTALLED / SUPPORTED PER SMACNA STANDARDS / PER OMC 603  
 ALL RECTANGULAR / ROUND DUCTWORK TO BE SEALED / PER OMC 603.9  
 ALL OUTSIDE AIR TO MEET CHAP 4 PER OMC SEC. 403 & PARA 403.2 "EXCEPT" & TABLE 403.3/ASHRAE 62.1  
 ALL T-STATS TO BE MOUNTED @ 54" AFF/USE OF 188 LOW-VOLTAGE CONTROL WIRING  
 ALL LAY-IN MOUNTED "SUPPLY'S" - TO BE TITUS OR EQUAL TO "TMS" 24" X 24" LAY-IN W/COLLAR & DAMPER.  
 ALL SURF. MOUNTED "SUPPLY'S" - TO BE EQUAL TO #661 SUPPLY AIR GRILLES W/REGI. STRAIGHT BOOTS  
 ALL LAY-IN MOUNTED "RETURN'S" - TO BE TITUS OR EQUAL TO #508 24" X 24" X 12" LAY-IN PLUS TRANSITIONS  
 ALL LAY-IN / SURFACE MOUNTED AIR DEVICES TO BE INSTALLED & SIZED AS NOTED ON PLAN  
 ALL ROOF MOUNTED EQUIPMENT TO BE LABELED AS NOTED ON MECHANICAL PLAN  
 ALL AIR DEVICES TO BE BALANCED TO VOLUME AS INDICATED ON THE PLAN +/- 10%  
 MECH. PLAN TO COMPLY W/OBC 106.106.1.1(3)-HVAC CONSTRUCTION DOCUMENT TO MATCH OHIO ARCH.PLAN

**LEGEND**

- SA— SUPPLY AIR DUCTWORK
- RA— RETURN AIR DUCTWORK
- EA— EXHAUST AIR DUCTWORK
- OA— OUTSIDE AIR DUCTWORK
- ☒ SUPPLY AIR DEVICE
- ☒ RETURN AIR DEVICE
- ☒ EXHAUST AIR DEVICE
- AD ACCESS DOOR (AD) OR PANEL (AP)
- MBD MANUAL BALANCE DAMPER W/LOCKING QUAD
- DWV DOUBLE WALL TURNING VANES
- RE RADIUS ELBOW
- RTU RECTANGULAR TO ROUND TRANSITION
- SUPPLY AIRFLOW SYMBOL
- RETURN/EXHAUST AIRFLOW SYMBOL
- T RTU1 THERMOSTAT (PROGRAMMABLE)
- RTU2 REMOTE AVERAGING SENSOR

**ABBREVIATIONS**

- A AMP
- AC AIR CONDITIONER
- ACH AIR CHANGES PER HOUR
- AD ACCESS DOOR
- AFF ABOVE FINISH FLOOR
- AFUE ANNUAL FUEL UTILIZATION EFFICIENCY
- AH AIR HANDLER
- AP ACCESS PANEL
- ARI AIR CONDITIONING & REFRIGERATION INSTITUTE
- ASHRAE AMERICAN SOCIETY OF HEATING, REFRIGERATING AND AIR-CONDITIONING ENGINEERS, INC.
- AS AVERAGING SENSOR
- BTUH BRITISH THERMAL UNIT PER HOUR
- CFH CUBIC FOOT PER HOUR
- CFM CUBIC FEET PER MINUTE
- CLG CEILING
- DA, Ø DIAMETER
- E.C. ELECTRICAL CONTRACTOR
- E.S.P. EXTERNAL STATIC PRESSURE
- EER ENERGY EFFICIENCY RATIO
- EF, EF EXHAUST FAN, IN-LINE EXHAUST FAN
- EXIST., ETR EXISTING, EXISTING TO REMAIN
- FLA FULL LOAD AMPS
- FLTR FILTER GRILLE
- G.C. GENERAL CONTRACTOR
- GI GROUND FAULT INTERRUPTER
- HP HORSEPOWER
- HVAC HEATING, VENTILATING & AIR CONDITIONING
- I.D. INSIDE DIAMETER
- M.C. MECHANICAL CONTRACTOR
- M.C.A. MINIMUM CIRCUIT AMPS
- MOPP MAXIMUM OVERCURRENT PROTECTION
- NEC NATIONAL ELECTRIC CODE
- O.C. ON CENTER
- O.D. OUTSIDE DIAMETER
- OBC OHIO BUILDING CODE
- OMC OHIO MECHANICAL CODE
- P.C. PLUMBING CONTRACTOR
- S.P. STATIC PRESSURE
- SCH SCHEDULE
- SF SQUARE FEET
- SMACNA SHEET METAL AND AIR CONDITIONING CONTRACTORS' NATIONAL ASSOCIATION
- TYP TYPICAL
- UL UNDERWRITER'S LABORATORY
- UNO UNLESS NOTED OTHERWISE

ROOM DESIGNATION		ROOM AREA (SQ. FT.)	NO. OF PEOPLE	ASHRAE 62.1-2019 / 2013 HEALTH CARE GUIDELINE REQ.			AIR DISTRIBUTION			
NUMBER	NAME			EST. MAX. OCCUPANCY (7/1000 SQ. FT.)	OA CFM / PERSON	OA CFM / SQ. FT.	OA CFM - CODE MINIMUM	OA CFM - DESIGN	SUPPLY AIRFLOW (CFM)	RETURN AIRFLOW (CFM)
Ex. RTU2										
B146	OPEN OFFICE	1,120	4	5	5.12	154	158	1,050	1,050	
B147	OFFICE	110	1	5	5.06	12	22	150	150	
SYSTEM TOTALS =						166	180	1,200	1,200	
<b>SYSTEM SUMMARY:</b> CONDITIONED AREA: 1,230 SF DESIGN AIRFLOW: 1,200 CFM DESIGN CFM/SF: 0.98 CFM/SF EST. OCCUPANCY: 5 PEOPLE MIN. O/A REQ'D: 180 CFM DESIGN O/A: 36.0 CFM/PERSON, 0.15 CFM/SF MINIMUM COMBINED OUTDOOR AIR RATE PER ASHRAE 62.1-2019, TABLE 6-1 IS 17.0 CFM PER PERSON FOR OFFICES										

**REVISION**

**DEPT. OF BUILDING REGULATION**  
 Gr. Co. Application/Permit No.: CHRA-25-3397  
 Project/Case No.: REV1-CHVAC-25-030130

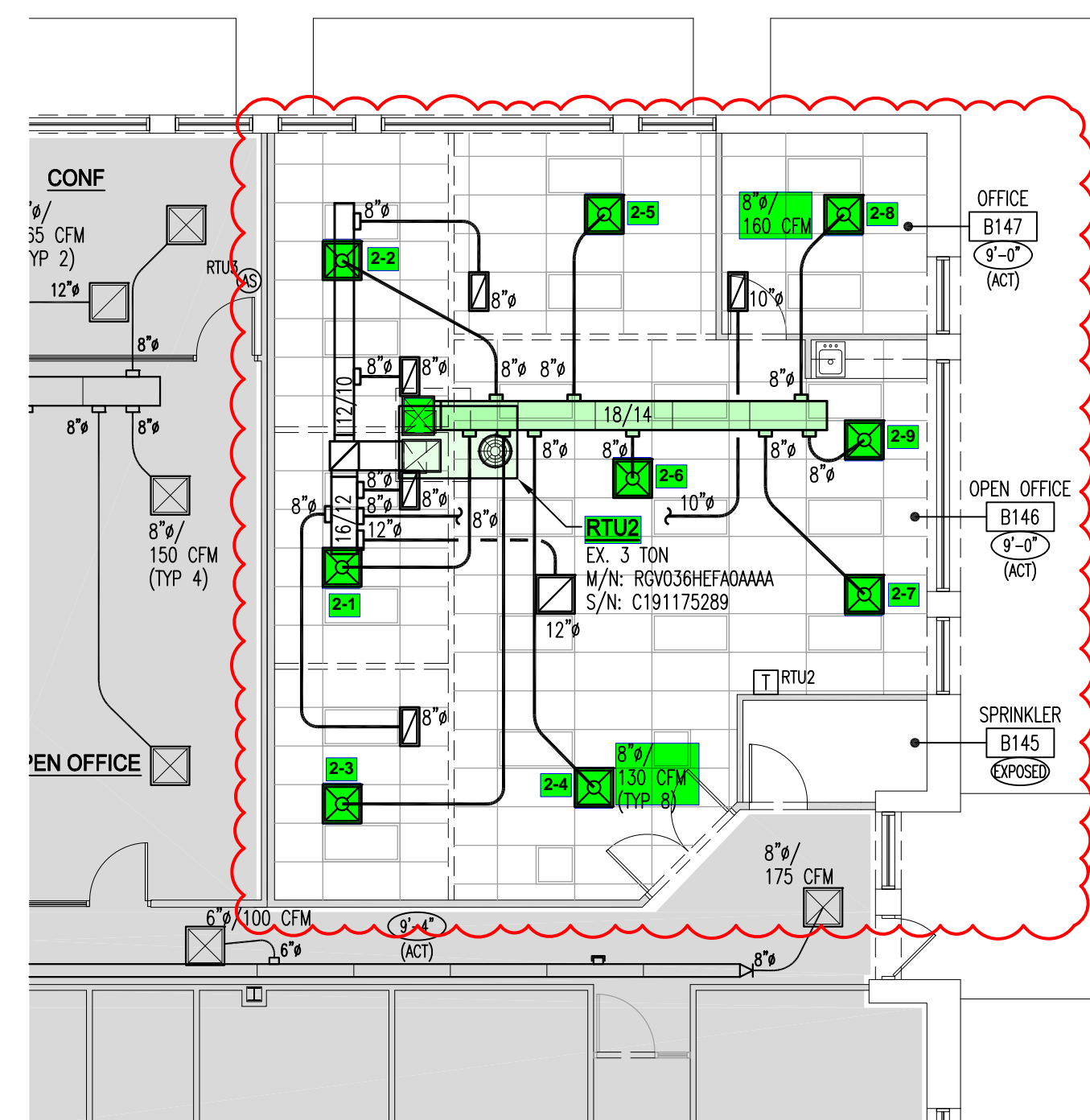
Approval (IBC 105.1)  
 Non-Conformance Approval (CBC 108.1.1)  
 Conditional Approval (CBC 105.1.2)  
 Prepaid Approval (CBC 105.1.4)

Group: Taylor Date: 09/30/2025  
 Issued By: Scott Young Date: 09/30/2025

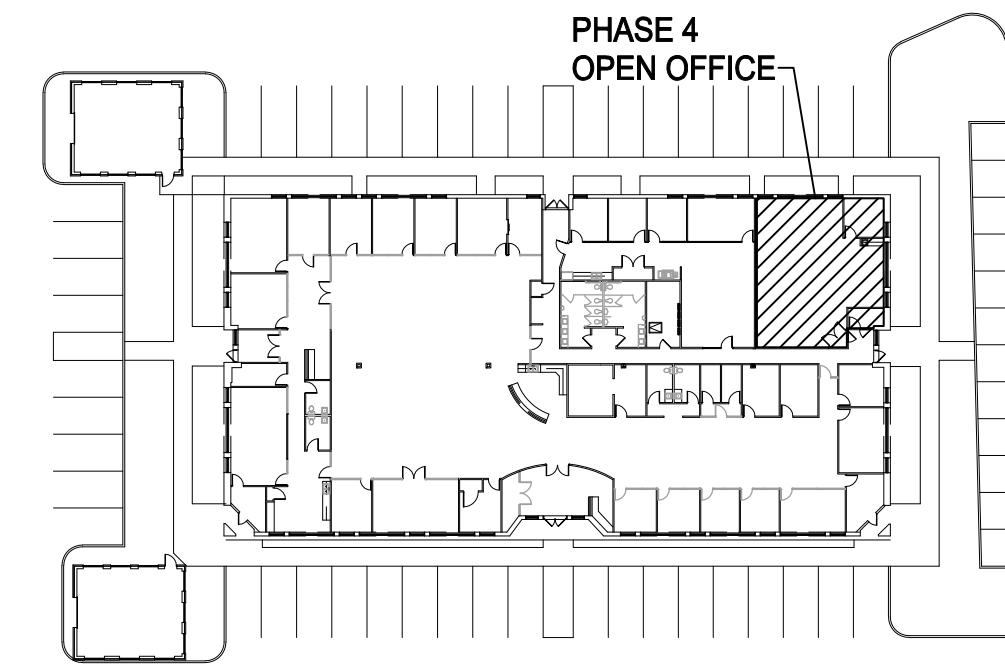
These documents have been prepared to the extent necessary to comply with the rules and regulations of the Department of Building Regulation. Approval of these documents does not constitute the Department of Building Regulation's endorsement of any product or service mentioned herein.

NOTE: SEPARATE PERMITS, WITH PLANS, ARE REQUIRED FOR HEATING VENTILATION, AIR CONDITIONING, GAS LINES, PLUMBING, ELECTRICAL, FIRE SUPPRESSION, FIRE ALARM SYSTEMS, FIRE MAIN, RANGE HOOD AND HOOD SUPPRESSION, SIGNS, AWNINGS, RETAINING WALLS, SATELLITE DISHES, TOWERS AND SWIMMING POOLS. IF ANY OF THESE ITEMS ARE PART OF THIS CONSTRUCTION PROJECT, UNLESS NOTED, THIS PLAN REVIEW MAY NOT INCLUDE THE ABOVE REFERENCED PERMITS.

**Greene County**  
 HVAC Approval Only  
 09/30/2025 7:47:17 AM



**OFFICE RENOVATION**  
 SCALE: 1/8"=1'-0"



**KEYPLAN - Phase 4**  
 SCALE: NONE

**DEIMER**  
 MECHANICAL SERVICES  
 9181 N. Dixie Dr., Dayton, Ohio 45414  
 (937) 709-3877

SEAL:

STATE OF OHIO  
 THERESA A. ROOT  
 E68169  
 REGISTERED PROFESSIONAL ENGINEER  
 License No. E68169, Exp. Date 12-31-25

DATE	NO.	REVISIONS
8-26-25	1	ISSUED FOR PERMIT
9-2-25	1	PLAN REVISIONS
9-28-25	2	PLAN REVISIONS

**WENCO**  
 CONSTRUCTION COMPANY

7621 Progress Court  
 Huber Heights, OH 45424  
 Phone: (937) 849-6002  
 www.wencoconstruction.com

Proposed HVAC Modifications for:

**creek technologies**  
**Phase 4 - Office Renovation**  
 2372 Lakeview Drive  
 Beavercreek, Ohio 45431

Project No.: 178321594  
 Date: 8-26-25 (Ph 4 Permit)  
 Scale: AS NOTED

Sheet Title:  
 PHASE 4  
 MECHANICAL PLAN  
 SCHEDS & SPECS

Sheet No.:  
**M1**